



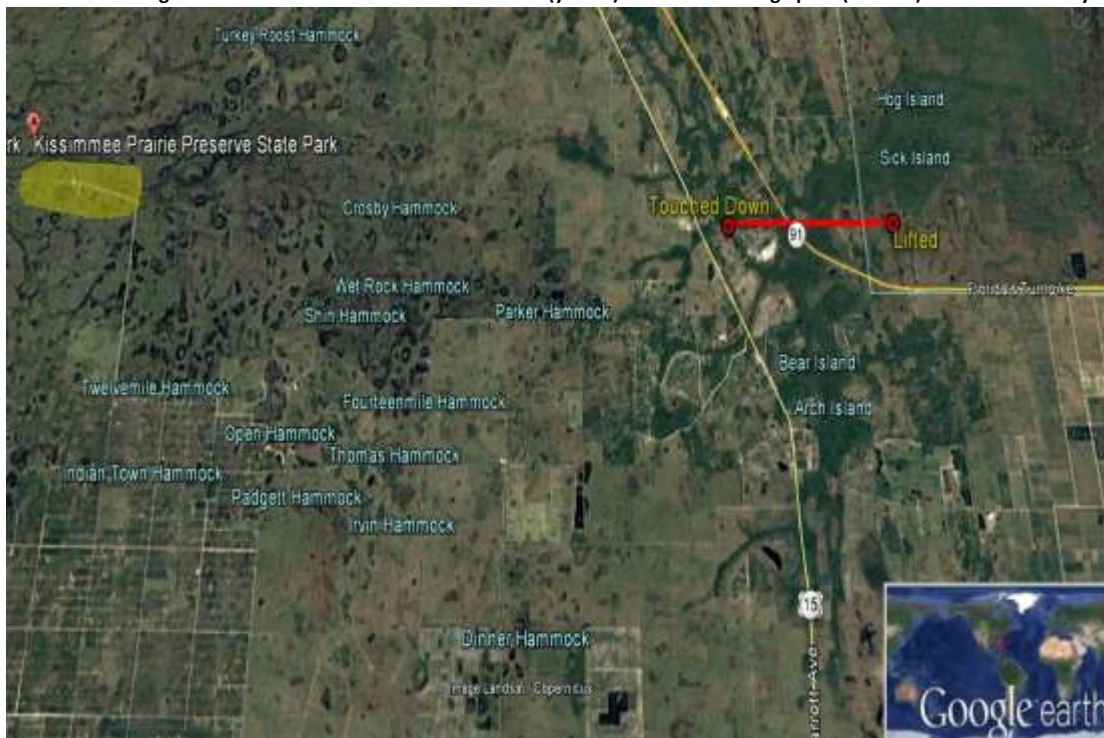
National Weather Service Melbourne, Florida

<http://www.srh.noaa.gov/mlb/>

NWS Melbourne Damage Survey Okeechobee County - April 6, 2017

A pre-frontal squall line pushed across the Florida peninsula on the morning of April 6th, 2017. As the squall line swept across Okeechobee County, damage occurred across the northern parts of the county. A storm survey conducted on April 7th determined thunderstorm downburst wind damage occurred in the Kissimmee Prairie State Park before the storm intensified to the east, producing an EF-2 tornado in the Fort Drum area of northeast Okeechobee County. The storm then pushed into far southwestern Indian River County before lifting.

Location of damage in Kissimmee Prairie Preserve State Park (yellow) & tornado damage path (red line) from storm survey.



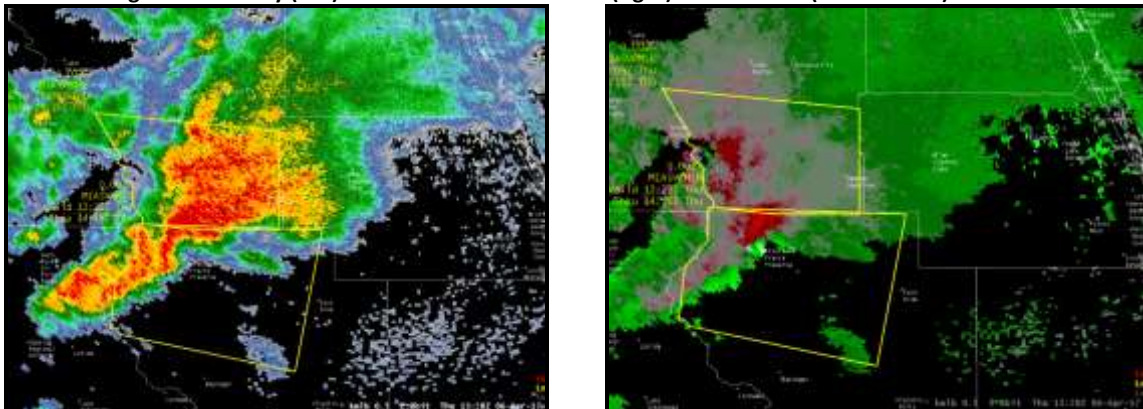
Kissimmee Prairie State Park:

Damage occurred in Kissimmee Prairie State park from the Equestrian Campground area to the Family Campground area. A few campers were flipped, big trees uprooted, and sheet metal was lodged into a tree. Minor injuries to 3 people inside the flipped campers, with one person transported to the hospital. Park biologist reported the damage occurred from 930-940 am EDT.

Damage path location in Kissimmee Prairie State Park:



KMLB 0.5 degree reflectivity (left) and storm relative motion (right) at 13:28 UTC (9:28 am EDT):



Damage Photos from Kissimmee Prairie State Park:



Fort Drum Area Tornado Damage:

Public Information Statement:

Public Information Statement
National Weather Service Melbourne FL
230 PM EDT MON APR 10 2017

...NWS DAMAGE SURVEY FOR 04/06/17 TORNADO EVENT...

...EF2 TORNADO CONFIRMED...

.OVERVIEW...A short lived EF-2 tornado is confirmed in Okeechobee County.

The damage track was mainly to the east of US-441 and south along 358 Blvd located in the northeast portion of Okeechobee County.

.FORT DRUM TORNADO...

RATING:	EF-2
ESTIMATED PEAK WIND:	115 mph
PATH LENGTH (STATUTE):	0.4 miles
PATH WIDTH (MAXIMUM):	150 yards
FATALITIES:	0
INJURIES:	1
START DATE:	APR 6 2017
START TIME:	09:51 AM EDT
START LOCATION:	.1 Miles West US441/358 Blvd
START LAT/LON:	27.5739 / -80.8215
END DATE:	APR 6 2017
END TIME:	10:02 AM EDT
END LOCATION:	.3 Miles East US441/358 Blvd
END LAT/LON:	27.5739 / -80.7680

SURVEY SUMMARY: A NWS storm survey crew found a short and narrow path of damage mainly east of US441 and south of 358 Blvd. Damage included many trees snapped and twisted above the base and uprooted, three manafacured homes destroyed and 17 homes were damaged.

EF SCALE: The enhanced Fujita scale classifies tornadoes into the following categories.

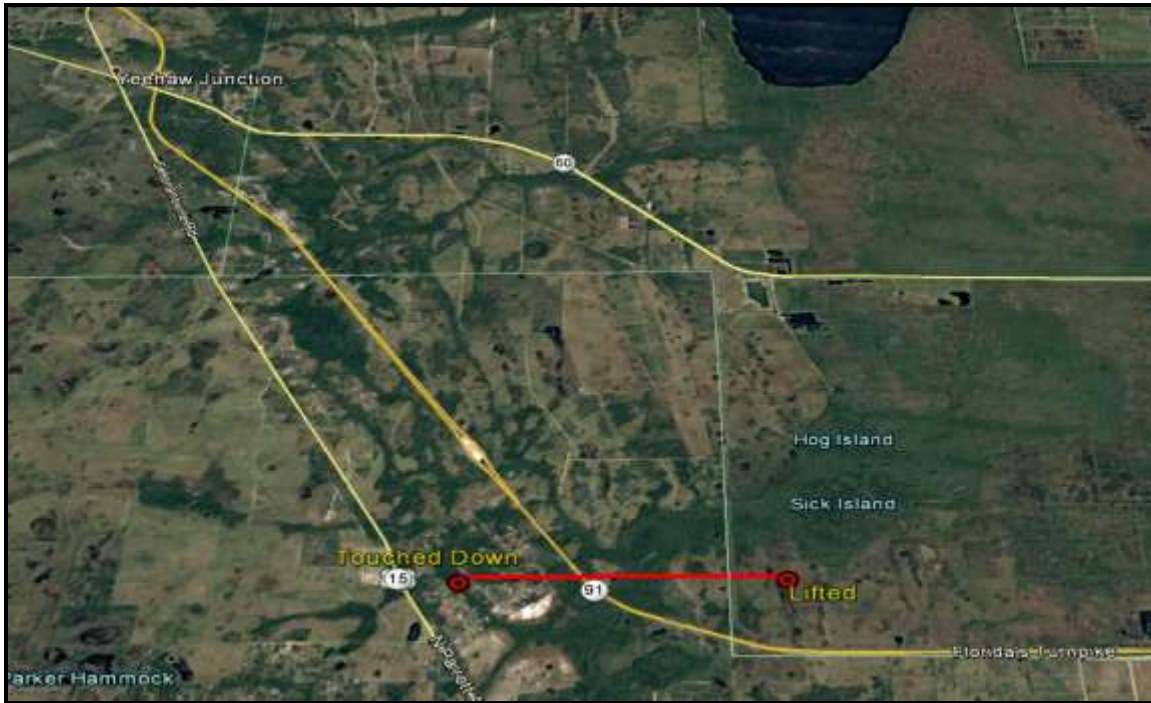
EF0...Weak.....	65 to 85 mph
EF1...Weak.....	86 to 110 mph
EF2...Strong....	111 to 135 mph
EF3...Strong....	136 to 165 mph
EF4...Violent...	166 to 200 mph
EF5...Violent...	>200 mph

NOTE:

The information in this statement is preliminary and subject to change pending final review of the events and publication in NWS storm data.

\$\$
Johnson

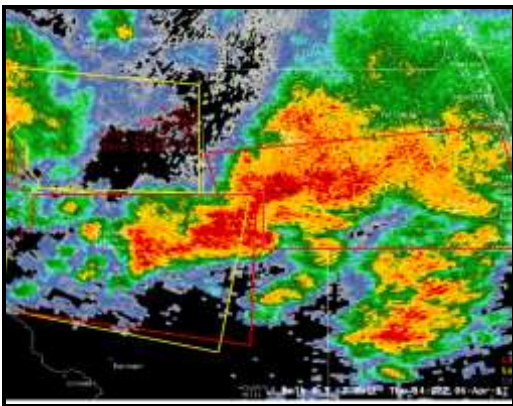
Tornado path determined from survey:



KMLB 0.5 degree reflectivity (left) and storm relative motion (right) at 13:51 UTC (9:51 am EDT):



KMLB 0.5 degree reflectivity (left) and storm relative motion (right) at 14:02 UTC (10:02 am EDT):



Damage Photos from Fort Drum Tornado:

