

## Volusia County Flooding


May 18-23, 2009

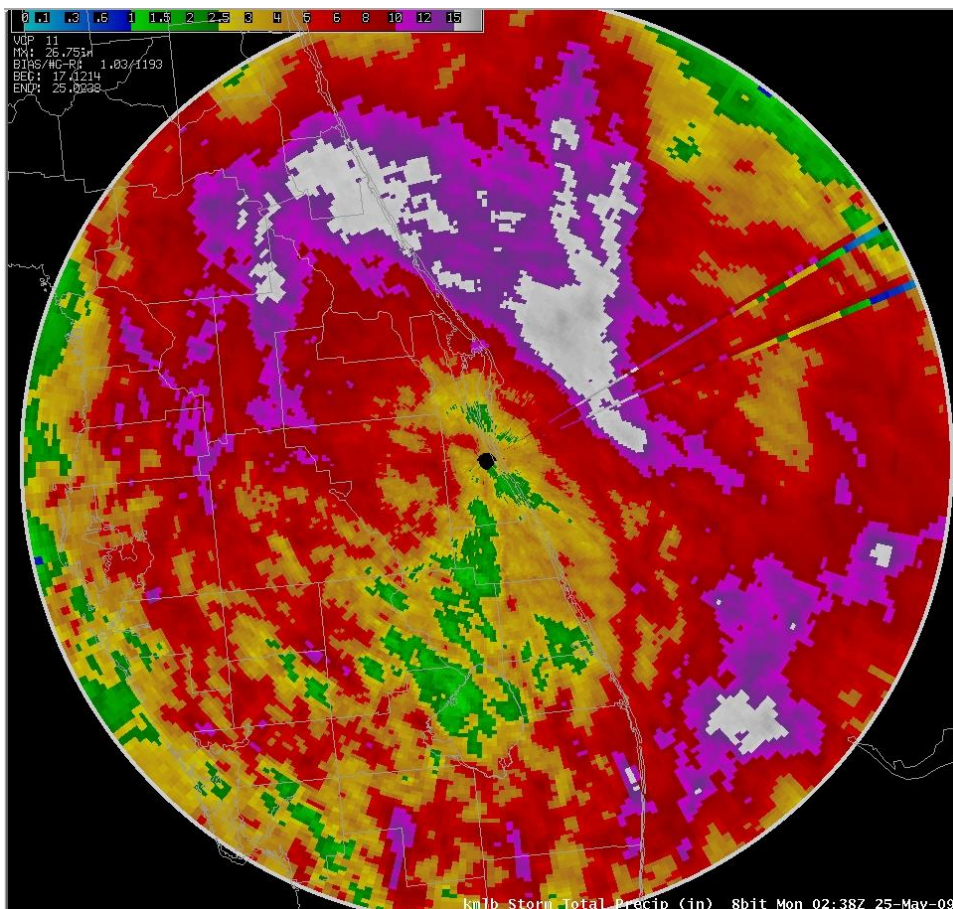
May 24, 2009 (Lake George Boating Tragedy)

A [cold front](#) brought deep moisture to the northern peninsula on Monday, May 18th, and a swath of locally heavy rain accompanied the front with rainfall amounts of 4 to 8 inches recorded across Volusia county by Tuesday morning. Persistent onshore flow behind the front strengthened [Tuesday \(19th\) as low pressure](#) began to form over the Florida Straits, keeping periods of heavy rainfall across much of East Central Florida. Gale conditions (see [marine summary](#) (below) occurred over the coastal waters Tuesday night. The [low pressure center on Wednesday morning \(20th\)](#) moved to offshore the Florida southwest coast and the wind flow decreased, but strong small craft advisory conditions continued over the coastal waters. Deep moisture and onshore flow allowed showers and thunderstorms to develop and drop more heavy rainfall across coastal areas and northern portions of East Central Florida. This moist pattern with locally heavy rain persisted through Friday (22nd) as the [low pressure center](#) moved slowly west to northwest in the Gulf of Mexico.

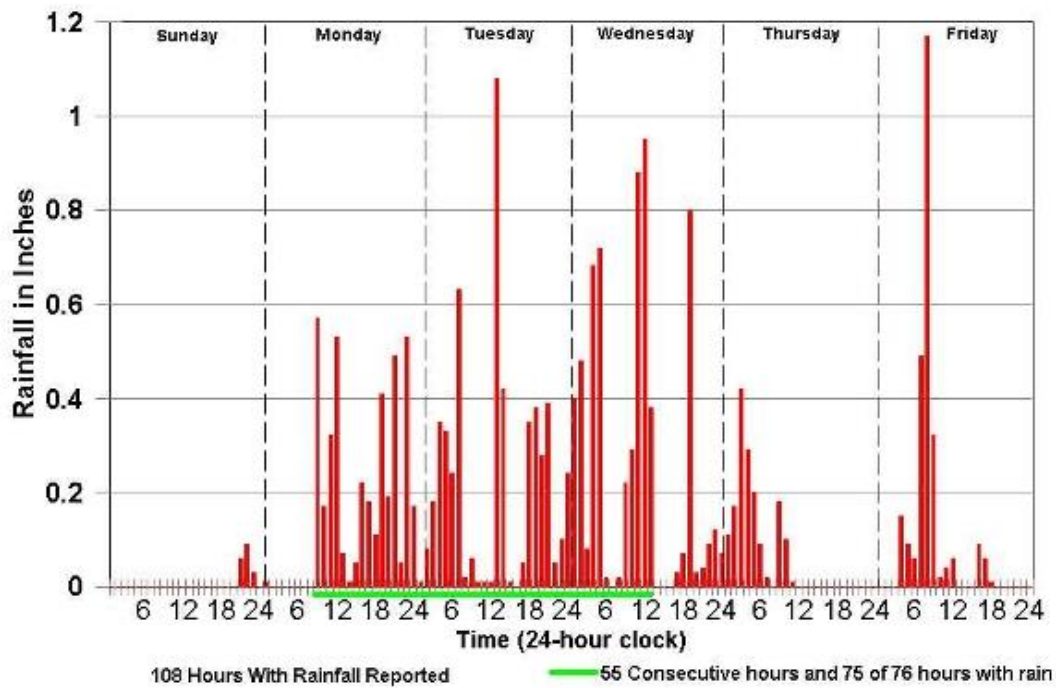
Scattered showers and storms continued over the weekend. Sunday (24th) dawned with sunshine for the first time in about a week. Boaters were anxious to get out on the water. Sadly, the day ended in tragedy as an afternoon thunderstorm dropped southward down Lake George and caught an unexpecting group of boaters by surprise. Three children drowned as their boat was capsized (they were wearing life jackets but got trapped under water in the boat's cabin).

For the week of May 17th through 23rd, Daytona Beach International Airport reported 20.63 inches of rainfall. A CoCoRaHS rainfall observer in Ormond Beach measured even more rainfall -- 27.06 inches during this same week. The Daytona Beach rainfall of 22.33 inches set a May rainfall record by a wide margin (12.66 inches in May 1976 was the previous monthly record for May). The persistent rainfall across Volusia county caused extensive flooding of some neighborhoods across Northeast Volusia county including Ormond Beach and Daytona Beach.

[Daily Weather Review with incremental rainfall estimates](#)   
[May Rainfall Summary for Florida](#)



## Daytona Beach Airport Hourly Rainfall May 17-22, 2009 (20.06" Total)



### Daily Rainfall May 2009

	Date	Rainfall	Old record
<b>Daytona Beach</b>	5/18	4.08	4.20 in 1932
	5/19	5.28*	1.81 in 1969
	5/20	6.37*	1.10 in 1931
	5/22	2.56*	1.59 in 1976
<b>Orlando</b>	5/18	.60*	.53 in 1972
	5/19	3.85*	.92 in 1969
	5/20	2.11*	1.33 in 1959
<b>Melbourne</b>	5/22	3.21*	1.89 in 2003
	5/18	2.75*	.65 in 1959
<b>Vero Beach</b>	5/19	3.36*	.74 in 2002
	5/19	2.82*	1.24 in 2002
	5/22	2.08*	.98 in 1982

\* new record rainfall for the date

### Other 24 hour heavy rain reports

Ormond Beach 3.5 SE	5/19	8.39	24 hr total ending at 7am 5/19
Ormond Beach 3.5 SE	5/21	9.88	24 hr total ending at 7 am 5/21
Daytona Beach 9.1 WSW	5/19	8.47	24 hr total ending at 7 am 5/19

PNSMLB FLZ041-044>047-053-054-058-059-064-141-144-147-2300-  
PUBLIC INFORMATION STATEMENT  
NATIONAL WEATHER SERVICE MELBOURNE FL  
1030 AM EDT SUN MAY 24 2009

RECORD RAINFALL AND FLOODING OCCURRED ACROSS THE CENTRAL FLORIDA PENINSULA OVER THE PAST WEEK. MOST INTENSE RAINFALL FELL OVER NORTHERN SECTIONS OF EAST CENTRAL FLORIDA, MAINLY OVER VOLUSIA, SEMINOLE AND PARTS OF ORANGE COUNTIES. OVER THE PAST WEEK, A COCORAHS REPORT FROM ORMOND BEACH SHOWED AN ACCUMULATED RAINFALL TOTAL OF 27.92 INCHES. AT DAYTONA BEACH, THE MONTH OF MAY 2009 IS BY FAR THE WETTEST MAY ON RECORD SINCE 1923. AS OF TODAY THE ASOS REPORTING SITE AT DAYTONA INTERNATIONAL AIRPORT SHOWS 21.67 INCHES, WITH 20.63 INCHES RECEIVED OVER THE PAST 7 DAYS. THE PREVIOUS RECORD WAS 12.33 INCHES SET IN MAY OF 1976. MAY 2009 IS ALSO SECOND WETTEST MONTH ON RECORD AT DAYTONA BEACH. THE WETTEST ALL TIME WAS 24.82 INCHES WHICH WAS SET IN THE MONTH OF OCTOBER IN 1924.

AIRPORT LOCATIONS	TOTAL 5/17 - 5/23
DAYTONA BEACH ASOS	20.63
LEESBURG ASOS	12.06
SANFORD ASOS	14.59
MELBOURNE ASOS	7.85
ORLANDO INTERNATIONAL	10.58
ORLANDO EXECUTIVE	8.83
VERO BEACH ASOS	6.58
FORT PIERCE ASOS	5.33

COOP REPORTS	TOTAL 5/17 - 5/24
CLERMONT	10.75
DELAND	13.72
FOREVER FLORIDA	8.15
FT PIERCE ARC	5.11
FT PIERCE WP	5.35
KENANSVILLE	6.45
KISSIMMEE	9.71
LISBON	8.41
MELBOURNE WFO	10.39
NETTLES ISLAND	4.80
ORLANDO EAST	13.75
WINDERMERE	12.69
OKEECHOBEE	1.64
PALM BAY	6.67
PLYMOUTH	12.42
PONCE INLET	15.77
PORT SALERNO	5.12
SANFORD	14.36
SCOTTSMOOR	13.28
STUART	3.75
TITUSVILLE	8.97
VERO BEACH	6.74

COCORAHS REPORTS	TOTAL 5/17 - 5/24
VOLUSIA	
NEW SMYRNA BEACH 1.5 E FLVL1	19.43
EDGEWATER 3.3 SE FLVL2	8.32
DELAND 4.5 NW FLVL3	12.44
DELEON SPRINGS 0.4 SE FLVL4	15.97
ORMOND BEACH 3.5 SE FLVL5	27.92
EDGEWATER 2.4 N FLVL6	19.30
DELTONA 2.9 SE FLVL7	13.43
DELAND 5.7 NW FLVL9	12.29
DAYTONA BEACH 9.1WSW FLVL12	12.11
LAKE EUSTIS 1.2 SE FLLK2	13.44

GROVELAND 1.7 E FLLK3	5.67
BASSVILLE PARK 1.0 NE FLLK4	10.96
MOUNT PLYMOUTH 0.2 WSW FLLK5	13.64
LADY LAKE 1.2 W FLLK6	12.19

SEMINOLE

SANFORD 0.4 ENEFLSM4	13.11
LONGWOOD 2.3 WNW FLSM5	13.32
CHULUOTA 0.9 N FLSM8	10.33

ORANGE

WINDERMERE 1.3 NW FLOR2	9.79
WINTER PARK 2.3 ESE FLOR4	8.22
OCOEE 0.5 SSW FLOR6	12.95
WINTER PARK 2.1 ESE FLOR9	3.12

BREVARD

PALM BAY 2.6 SSE FLBV1	5.80
PALM SHORES 1.4 W FLBV2	12.07
MIMS 7.5 NNW FLBV3	13.28
MELBOURNE 1.1 N FLBV6	9.24
MICCO 4.5 NW FLBV7	5.06
MALABAR 2.9 NNW FLBV9	4.28
MELBOURNE BEACH 3.9 SSEFLBV11	1.51
CAPE CANAVERAL 0.6 ESE FLBV12	9.17
PALM SHORES 2.9 NW FLBV16	10.12
PALM SHORES 4.3 NNW FLBV20	7.68
MELBOURNE 7.0 NW FLBV22	12.16
COCOA 2.6 WNW FLBV23	5.95
INDIALANTIC 0.8 N FLBV24	7.66
MELBOURNE 8.2 NW FLBV25	12.19
COCOA 0.6 WSW FLBV26	6.05
MICCO 1.3 NW FLBV28	1.30
MERRITT ISLAND 4.1 NE FLBV32	5.92

OSCEOLA

POINCIANA PLACE 2.6 NNWFLOS1	10.97
ST. CLOUD 1.7 SSW FLOS15	8.59
ST. CLOUD 0.1 WNW FL016	8.89

INDIAN RIVER

VERO BEACH S 10.0 W FLIR2	4.65
SEBASTIAN 1.1 NE FLIR4	5.47
VERO BEACH 2.4 W FLIR6	6.18
VERO BEACH 3.1 ESE FLIR7	4.91
VERO BEACH 11.4 NW FLIR8	5.69
VERO BEACH 4.3 SE FLIR9	5.37
VERO BEACH 3.5 SW FLIR11	2.95
VERO BEACH 2.1 ENE FLIR13	6.81
VERO BEACH 1.5 WSW FLIR15	7.09
SEBASTIAN 1.0 NW FLIR18	5.20
SEBASTIAN 2.0 SSW FLIR19	6.67
SEBASTIAN 1.7 SSE FLIR22	7.27

SAINT LUCIE

PORT ST. LUCIE 1.7 WSW FLSL3	3.41
LAKWOOD PARK 0.5 SW FLSL4	3.75
FORT PIERCE 2.8 SSE FLSL5	3.71
PORT ST. LUCIE 2.5 SW FLSL9	1.64
PORT ST. LUCIE 1.6 WSW FLSL10	1.53
FORT PIERCE 2.8 SSE FLSL11	4.35
PORT ST. LUCIE 5.6 W FLSL17	0.02
PORT ST. LUCIE 4.0 NE FLSL19	3.69

PORT ST. LUCIE 5.0 ESE FLSL20 2.65

MARTIN

PALM CITY 4.0 SW FLMT1 3.73

STUART 3.7 SW FLMT7 3.46

STUART 5.0 SE FLMT11 5.55

OKEECHOBEE 16.4 ESE FLMT13 5.18

NOTE: COCORAHS PRECIPITATION REPORTS ARE CONSIDERED SUPPLEMENTAL AND UNOFFICIAL AND SOME DAYS MAY BE MISSING IN EVENT TOTALS. COCORAHS AND COOP REPORTS ARE THROUGH 7 AM.

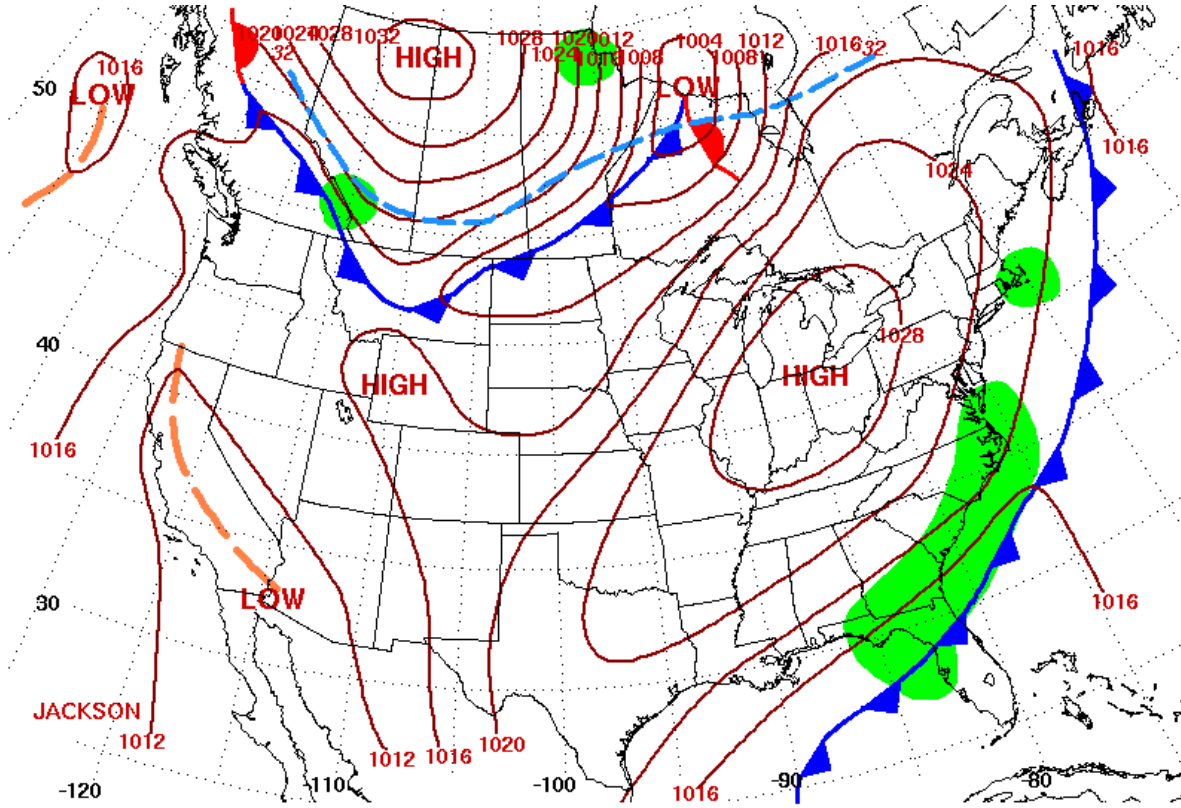
\$\$

---

<b>Summary of Marine Conditions at Buoy 41009 (20nm offshore Cape Canaveral)</b>	
<b>0450Z on 5/19</b>	<b>Seas 7 feet</b>
<b>1320Z on 5/19</b>	<b>Small Craft Advisory (20 knots)</b>
<b>2350Z on 5/19</b>	<b>Gale (frequent gusts to 34 knots or greater)</b>
<b>0020Z on 5/20</b>	<b>Seas 10 feet</b>
<b>0320Z on 5/20</b>	<b>Peak sustained wind 35 knots</b>
<b>0320Z on 5/20</b>	<b>Peak gust 41 knots</b>
<b>0420Z on 5/20</b>	<b>Seas 15 feet</b>
<b>0650Z on 5/20</b>	<b>Winds subsided below Gale force (34 knots)</b>
<b>0650Z on 5/20</b>	<b>Peak wave height 18.2 feet</b>
<b>0920Z on 5/20</b>	<b>Seas fell below 15 feet</b>
<b>1420Z on 5/21</b>	<b>Winds fell below Small Craft Advisory (20 knots)</b>
<b>1650Z on 5/21</b>	<b>Seas fell below 10 feet</b>
<b>1650z on 5/23</b>	<b>Seas fell below 7 feet</b>

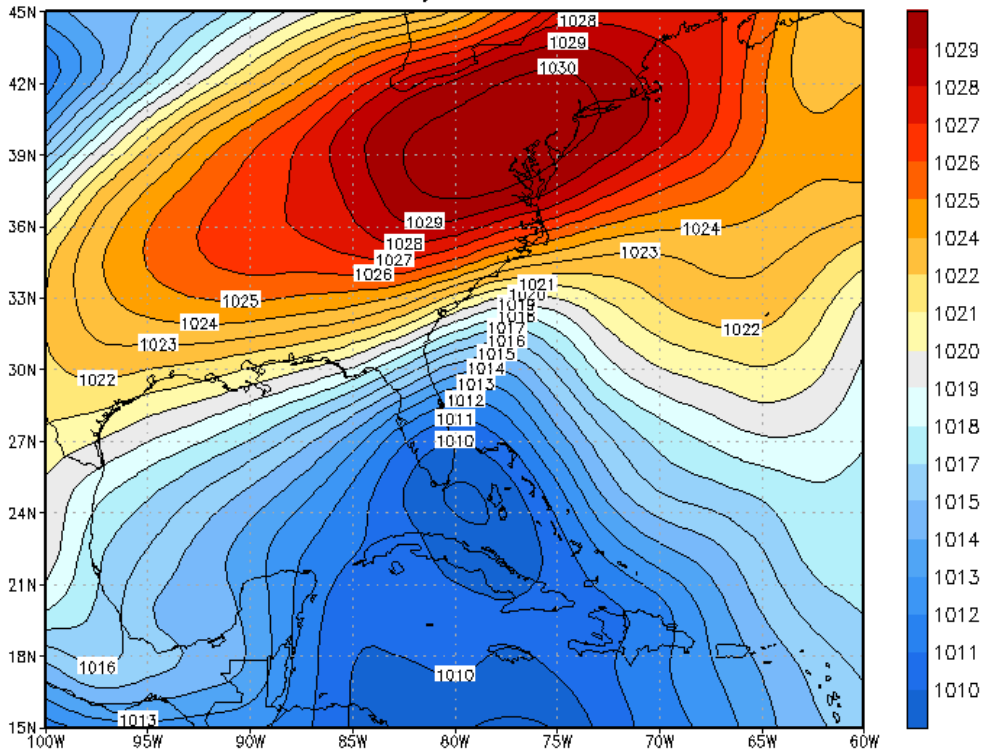
---

**Surface Maps Depicting Evolution of Front and Surface Low Pressure Center:**

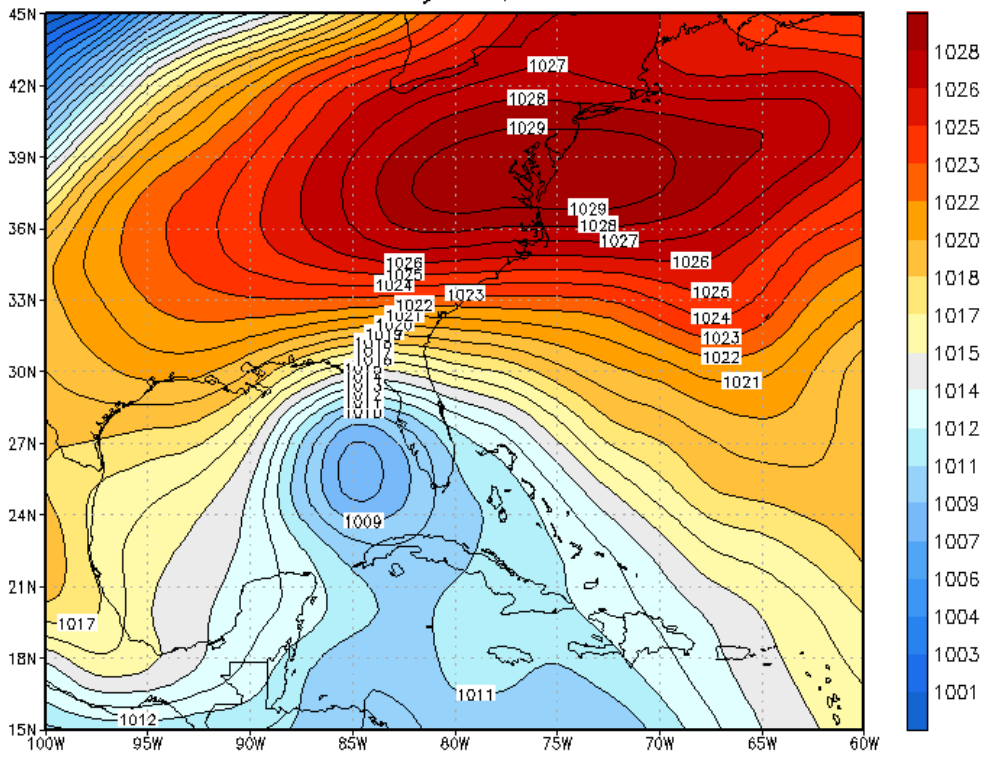


Surface Weather Map at 7:00 A.M. E.S.T.  
12Z May 18, 2009

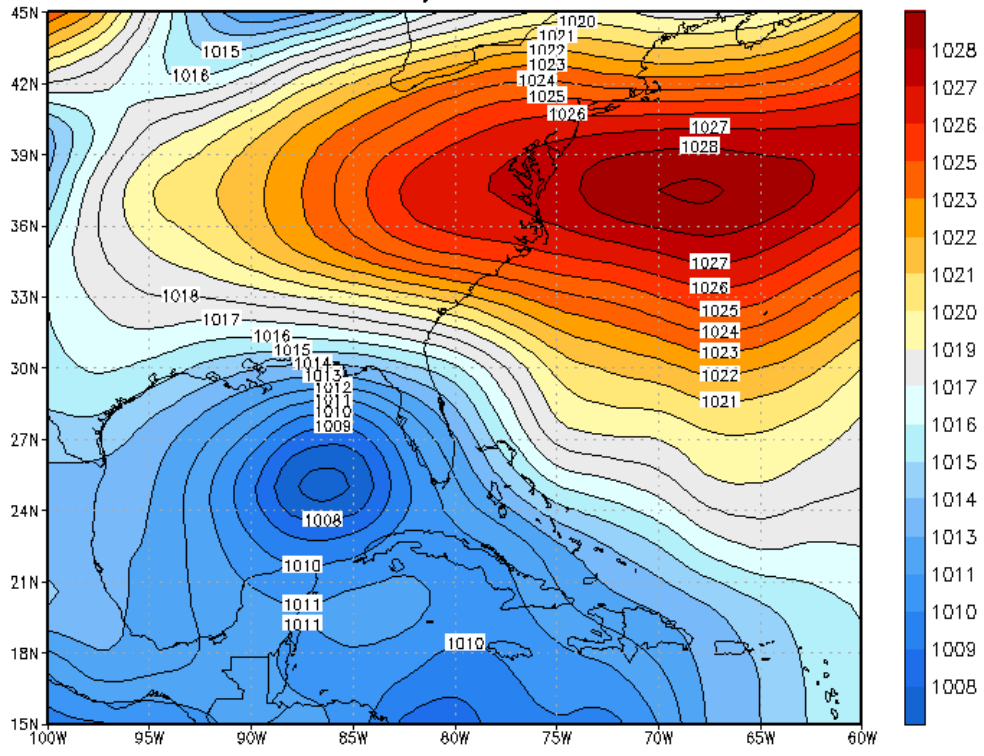
12Z May 19, 2009



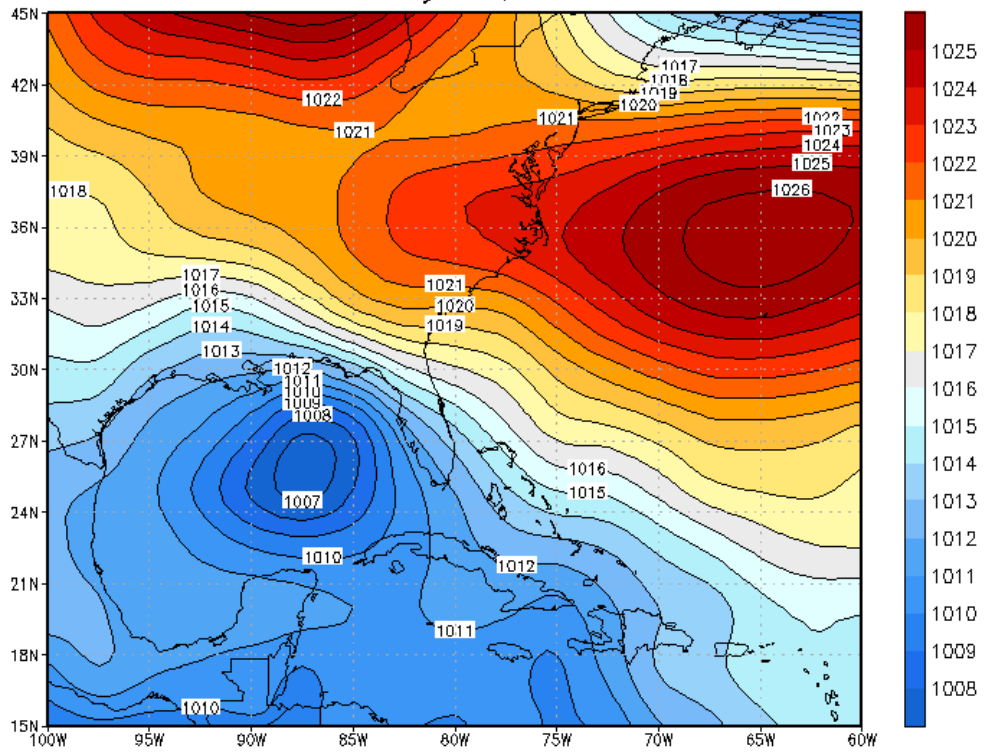
12Z May 20, 2009



12Z May 21, 2009

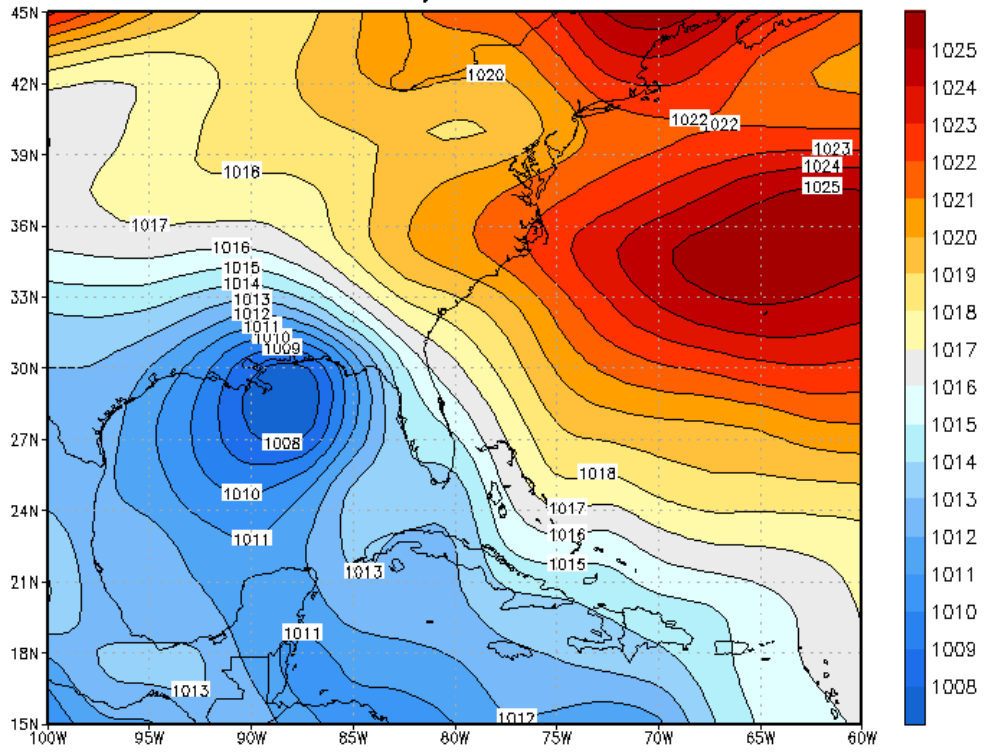


12Z May 22, 2009





12Z May 23, 2009



12Z May 24, 2009

