

# Melbourne Tropical Storm Gordon Page

November 15, 1994

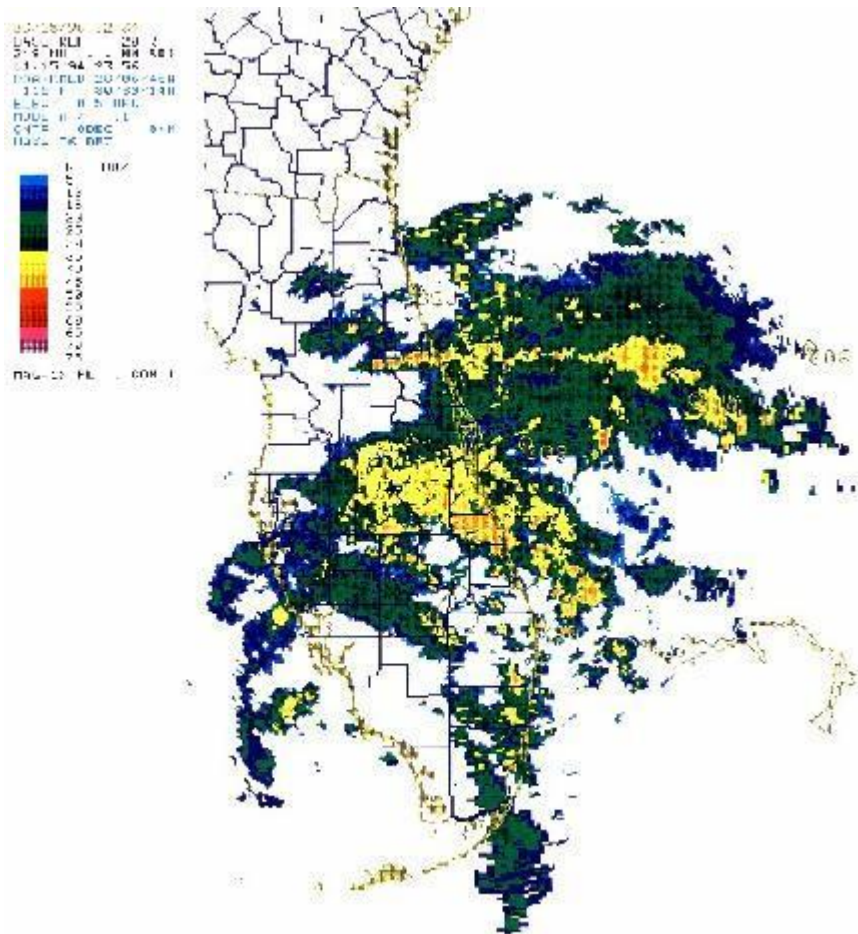
---

Tropical Storm Gordon affected east central Florida from November 13 through 18th 1994 causing a killer tornado and flooding rainfall that lead to several deaths.

---

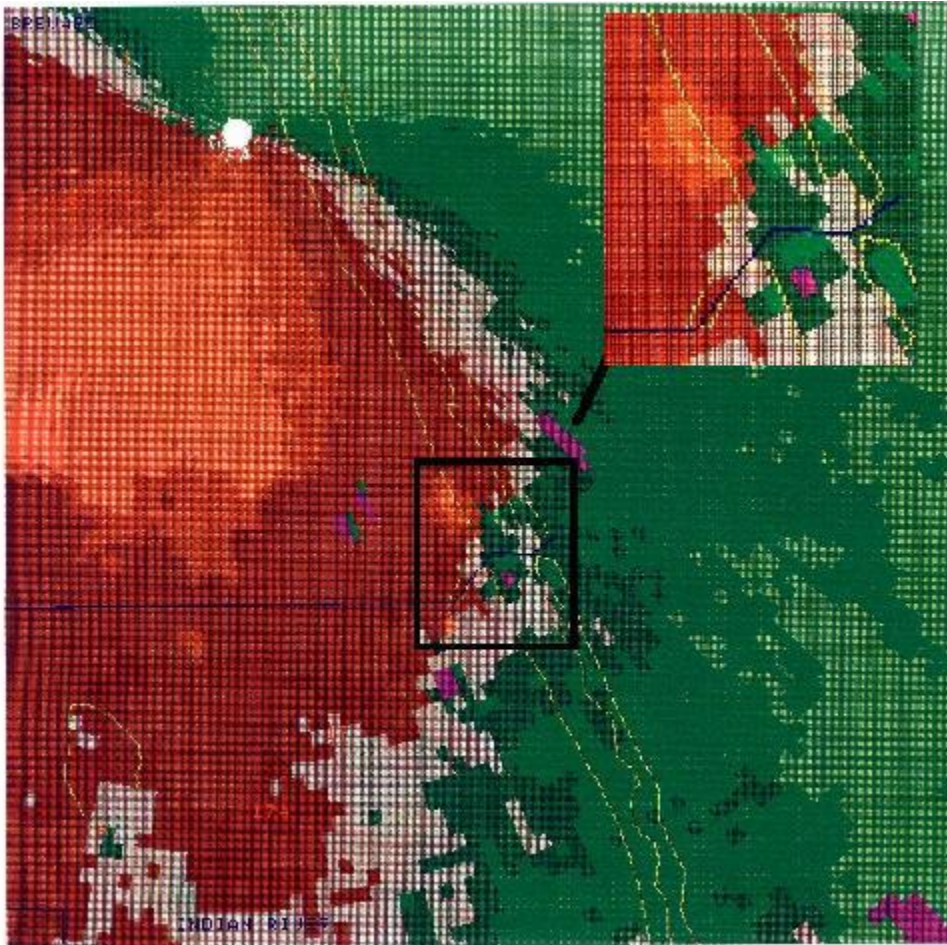
[National Hurricane Center Summary of Tropical Storm Gordon](#)

---

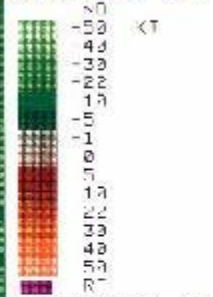


The center of Gordon is north of Key West, but rainbands well removed from the center spawned a killer tornado in Brevard County at Barefoot Bay.

---



03/05/96 12-30  
 RFI UNI MAP 50.0  
 124 NH 54  
 11/15/94 23-09  
 RDA: KMI D 20/00/4  
 116 F 90/39/1  
 ELEV= 9.5 DEG  
 MODE A 11  
 CNTR: 1490LL 17  
 K007 -13 ET 54  
 SRH: 1450FC 22 K



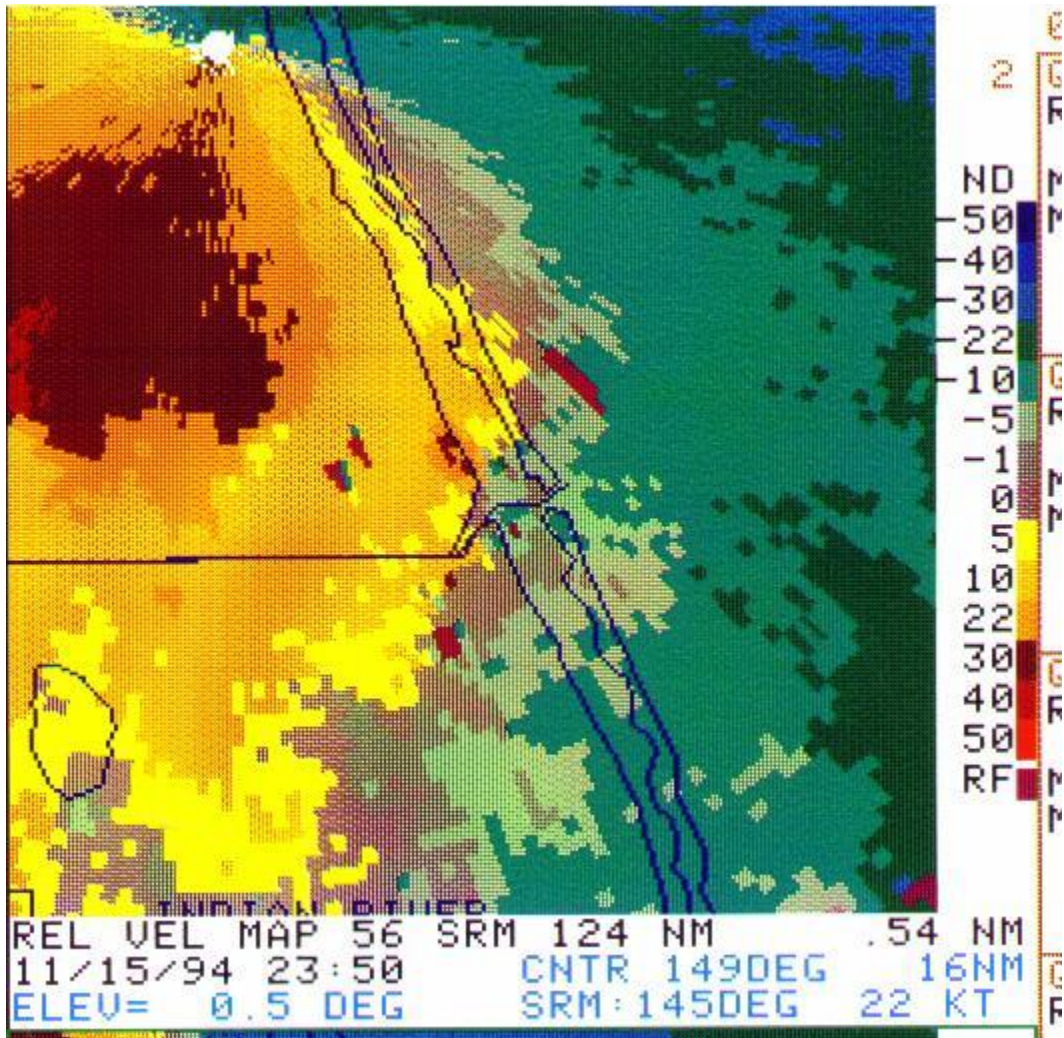
MAG=8X FL= 1 COP

4/4 (RDA) 152 I  
 3751PT 34 F  
 DIF 1 1228  
 PRCD FCVD R F  
 K4 R 1937 1 1 F  
 15/12/4 ARCHTUP  
 UNII 1 READ DONE  
 H7-ULUHY

HARD COPY REQUEST  
 ACCEPTED

INDIAN RIVER

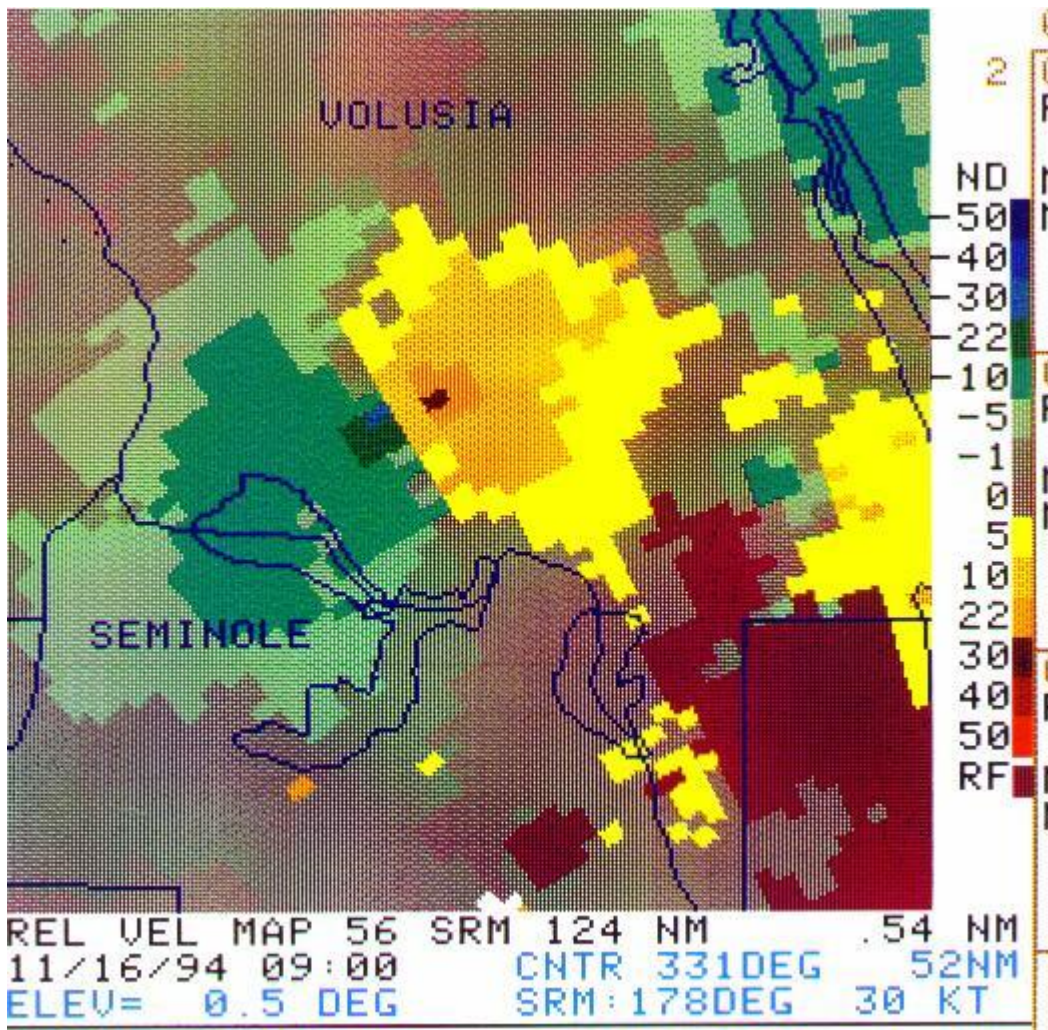




**The Barefoot Bay Mesocyclone:**

This storm produced a short-lived F2 tornado as it moved onshore. The tornado devastated the town of Barefoot Bay; killing one man.

---

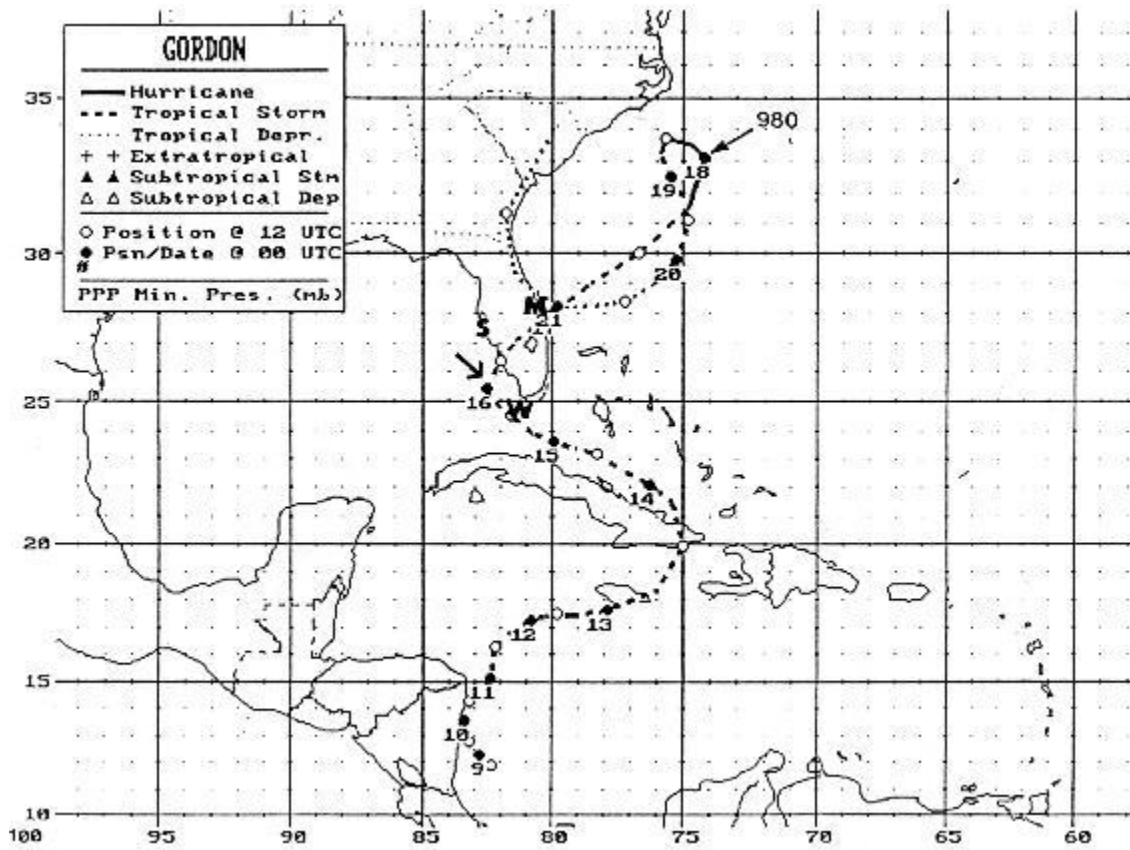


**The Iron Bend Mesocyclone:**

This storm produced a short-lived F0 tornado over South Volusia County. This storm is a text-book example of a mesocyclonic couplet.

---





Best track positions of Tropical Cyclone Gordon. The arrow indicates the approximate position of Gordon during the time of the tornadoes across east-central Florida. The letters "M", "S", and "W" signify the cities of Melbourne, Sarasota, and Key West.