

The Weather Watcher

of the Inland Northwest

www.weather.gov/Spokane



INSIDE THIS ISSUE:

	2
	2
	2
	3
	4

Windstorms—A Look Back



A familiar sight in Spokane, 11/17/15—downed trees and power lines on city streets

January 9, 1972

- Communities of Beverly, Shawana and Mattawa (along the Columbia River south of Wenatchee) sustained extensive damage. Six trailer houses were overturned and destroyed. Other low-income homes were leveled. All three towns were without power and phones.
- Rattlesnake Mountain near Richland measured a wind gust of 150 mph, the top speed of the instrument.
- Gusts of 60-65 mph and higher were prevalent.
- The wind blew away the upper mechanical room of the University of Idaho Physical Science Building in Moscow.
- Wind toppled chimneys in Colfax.

November 19, 2003

- In the north Idaho, a dozen large pine trees fell on summer homes along Lake Pend Oreille.
- In the Coeur d'Alene area, numerous trees fell on houses and power lines.
- 65 mph gust measured in Pomeroy, WA.

- Over the Palouse, a wind gust blew the roof off of a barn near Colfax
- Near Newport, a tree was blown onto a house.
- The heaviest damage occurred in the Spokane area where numerous trees were toppled onto houses and power lines. Up to 16,000 people were without power in Spokane's South Hill neighborhoods.

November 17, 2015

- 3 Deaths across the region
- 396,000 Avista customers in North Idaho and eastern Washington lost power with 30,000 without power after a week.
- 817 trees downed by the storm & counted in the city of Spokane street right-of-way, according to the Spokesman Review
- North Idaho peak gusts of 60+ mph in Huetter, Worley, Viola, and Cocolalla
- Eastern Washington peak gusts of 60+ mph in Lind, Moses Lake, Pullman with Mission Ridge Ski area clocking in at 137 mph.

Ron Miller & Robin Fox

Editor's Notes

As they say...Winter is coming. It has been wet, warm and windy—but the snow?! Most would like to see more—especially in the mountains.

Make sure you are prepared for winter weather—when it does strike. Have your vehicle winterized and packed with an ice scraper, chains, & a charged phone.

The Winter Solstice or the first day of Winter is December 21st at 8:48 pm. This marks the longest night of the year for the northern Hemisphere.

We are always looking for new ideas, pictures and stories for our publication. If you would like to share, please call (509) 244-0110 or email nws.spokane@noaa.gov.

This newsletter and past issues are available online on our NWS Spokane web page.

The main purpose of this publication is to keep our readers informed about NWS services and programs, and recognize those who help us with our mission, including weather spotters, observers, media, emergency managers, and government agencies.

All articles are written by the NWS staff. A special thanks goes to Ron Miller, Jon Fox, Bob Tobin and Andy Brown for their help.

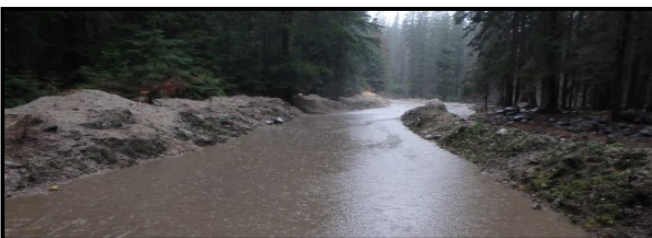
2015 Fire Season Stats

Winter Outlook



Stickpin Fire on 8/13/15—courtesy Peter Holter Mehren

Bob Tobin



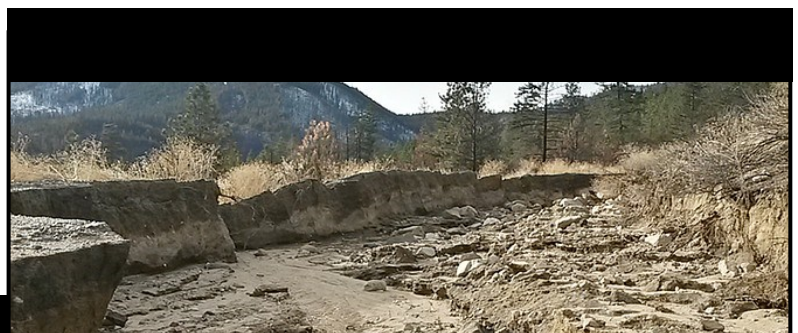
Flooding on Pope Creek on 10/31/15—courtesy USFS

Spotters & Observers Corner

Andy Brown

WET START TO DECEMBER 2015				
SITE	Dec 1-10 th precipitation	Dec 1-10 th Normal	Departure from Normal	Percent of normal
Stehekin	8.47"	2.24"	+6.23"	378%
Mazama	4.80"	1.31"	+3.49"	366%
Saint Maries	3.92"	1.45"	+2.47"	270%
Bonnors Ferry	3.34"	1.06"	+2.28"	315%
Pullman	2.80"	0.59"	+2.21"	475%
Republic	2.40"	0.71"	+1.69"	338%
Spokane Airport	2.25"	0.82"	+1.43"	274%
Wenatchee Airport	1.65"	0.46"	+1.19"	358%
Lewiston	0.97"	0.32"	+0.65"	303%

Ron Miller & Robin Fox



Autumn in Review

September

Jon Fox & Ron Miller

ANSWER: 77mph on June 21, 2005 due to a
thunderstorm gust front

Autumn Weather Statistics

October.

November

Wenatchee Water Plant	Sep	Oct	Nov	Total
Avg High Temp	75.6	68.2	48.2	64.0
Departure from Norm	-2.7	+4.7	+1.7	+1.2
Avg Low Temp	50.8	45.5	31.4	42.6
Departure from Norm	-0.9	+4.3	-0.8	+0.9
Total Precip	0.51	0.48	1.33	2.32
Departure from Norm	+0.21	-0.04	-0.05	+0.12
Total Snowfall	0.0	0.0	1.0	1.0
Departure from Norm	0.0	0.0	-0.9	-0.9
Lewiston Airport	Sep	Oct	Nov	Total
Avg High Temp	77.2	70.4	46.8	64.8
Departure from Norm	-1.0	+7.8	-1.4	+1.7
Avg Low Temp	50.6	48.3	33.1	44.0
Departure from Norm	-0.4	+7.2	-1.0	+1.9
Total Precip	0.65	0.75	0.95	2.35
Departure from Norm	-0.02	-0.21	-0.23	-0.46
Total Snowfall	0.0	0.0	T	T
Departure from Norm	0.0	0.0	-1.8	-1.8
Spokane Airport	Sep	Oct	Nov	Total
Avg High Temp	70.7	64.5	42.1	59.1
Departure from Norm	-2.2	+6.5	+0.5	+1.6
Avg Low Temp	47.1	44.2	27.7	39.7
Departure from Norm	-0.3	+7.0	-2.1	+1.5
Total Precip	0.52	1.14	0.77	2.43
Departure from Norm	-0.15	-0.04	-1.53	-1.72
Total snowfall	0.0	0.0	1.5	1.5
Departure from Norm	0.0	-0.1	-5.9	-6.0



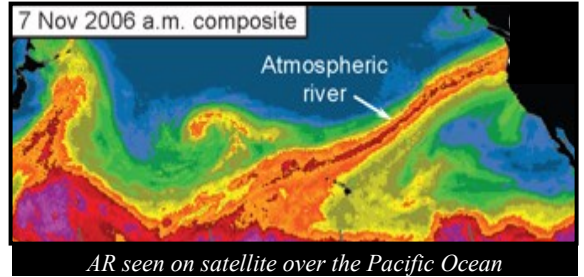
Remember your Winter Spotter Checklist

Snow: 2"+ valleys & 4"+ mountains
Strong Winds: 30mph+ or damage
Hail: pea size or larger
Reduced Visibility: under a mile due to smoke, dust...
Heavy Rain: Showery: 1/2" + in 1hr Steady: 1"+ in 12hr/1.5"+ in 24hr
Any Flooding
Any Mixed Precipitation
Travel Problems or Damage: due to severe/hazardous weather

Atmospheric Rivers

"Atmospheric River"

□



<http://www.esrl.noaa.gov/psd/atmrivers/>
Robin Fox

Watch : Conditions are favorable for severe or hazardous weather around the watch area.
CAUTION—Watch the Sky!

Warning : Severe or hazardous weather is likely or is occurring in the warned area.
DANGER—ACT NOW!

The Weather Watcher Of the Inland Northwest



□



Trivia: What is the all time high wind gust in Spokane?