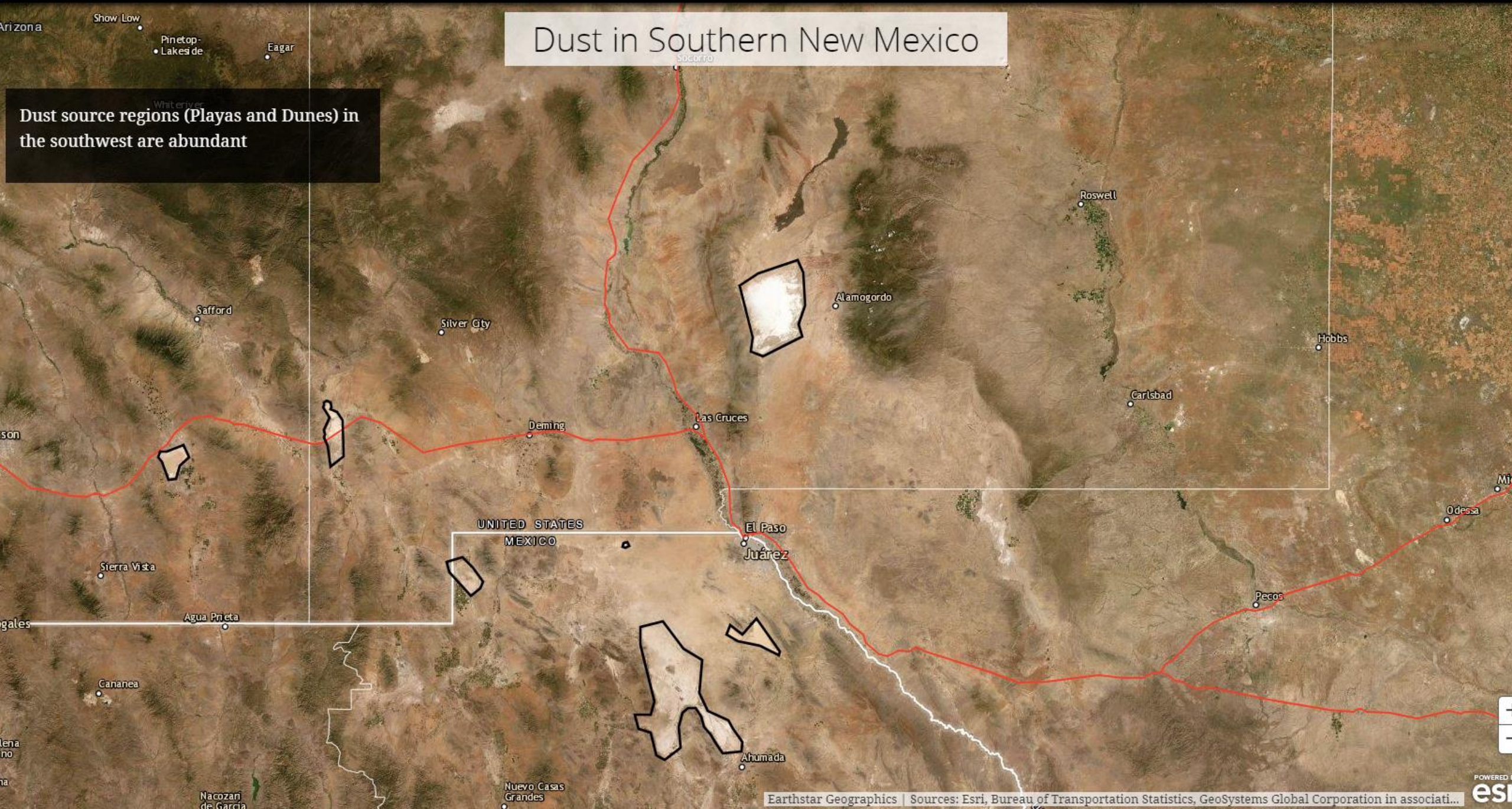


# ArcGIS Online Dashboard for Dust

Eleanor Dhuyvetter | National Weather Service Office | El Paso Texas

# Dust in Southern New Mexico

Dust source regions (Playas and Dunes) in the southwest are abundant



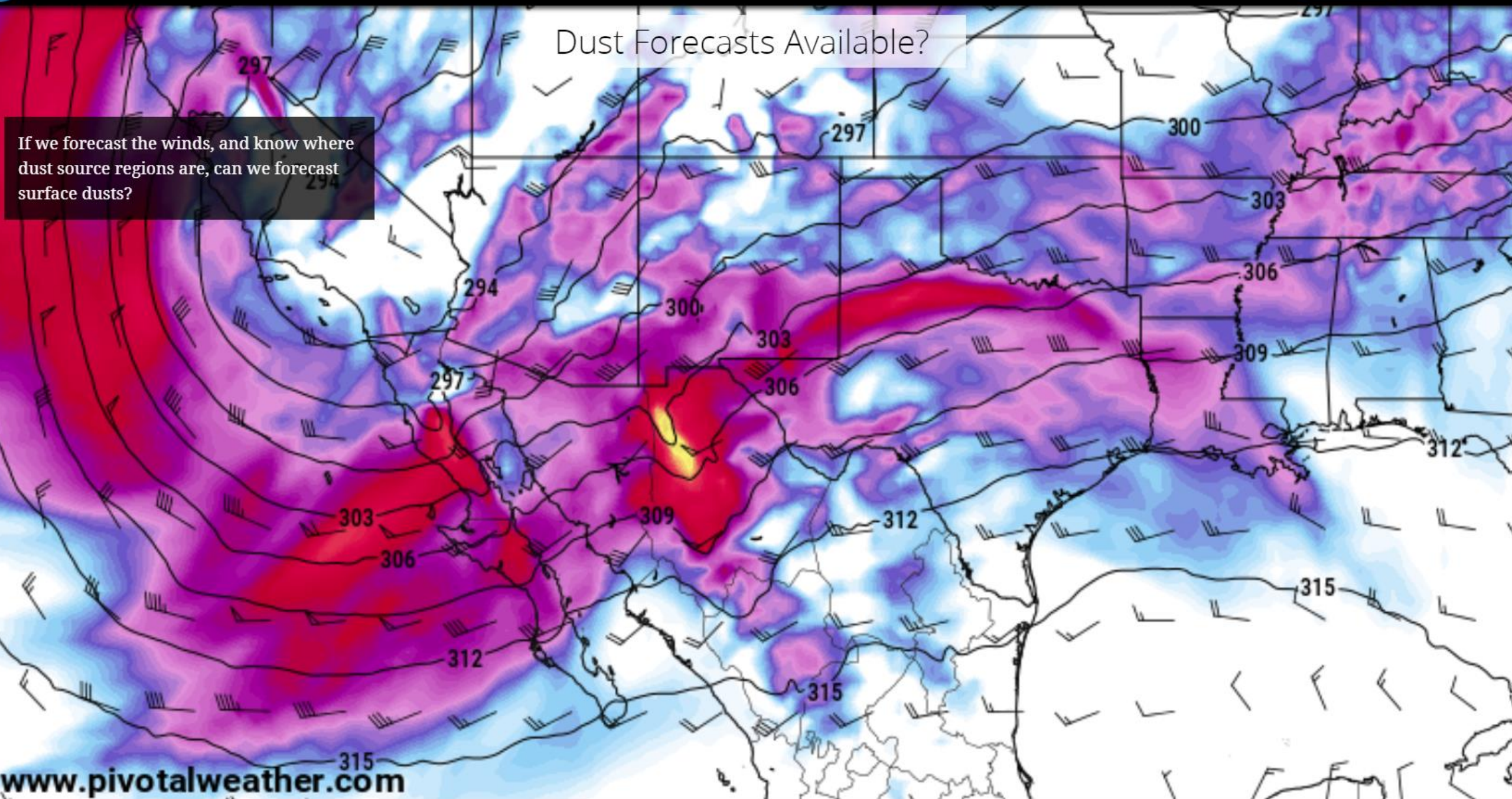
# Dust in Southern New Mexico

The Lordsburg Playa is a major contribution of dust along I-10 in New Mexico



# Dust Forecasts Available?

If we forecast the winds, and know where dust source regions are, can we forecast surface dusts?

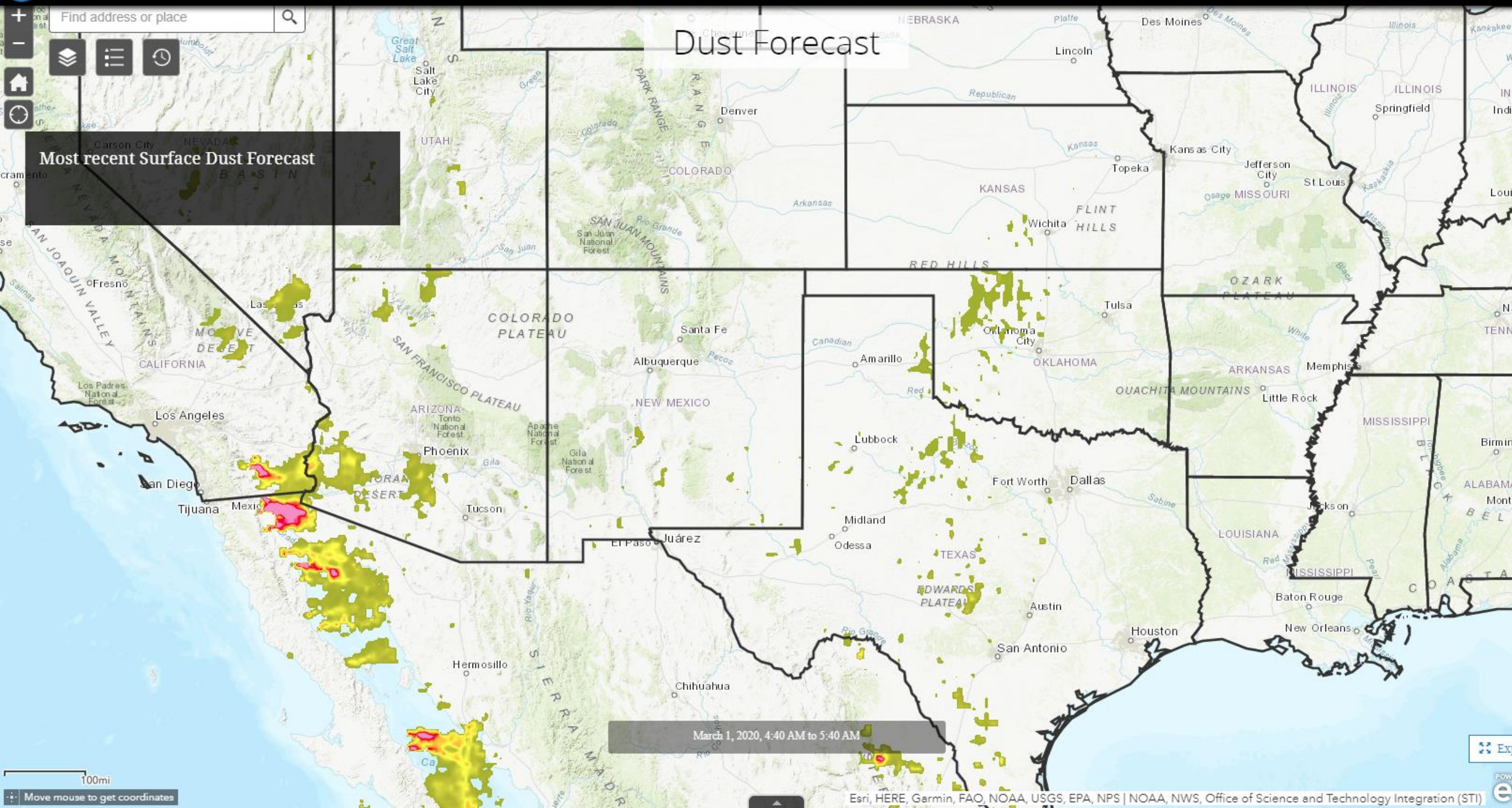


Find address or place

Map navigation controls: Home, Layers, Full Screen, Refresh, etc.

# Dust Forecast

Most recent Surface Dust Forecast



March 1, 2020, 4:40 AM to 5:40 AM

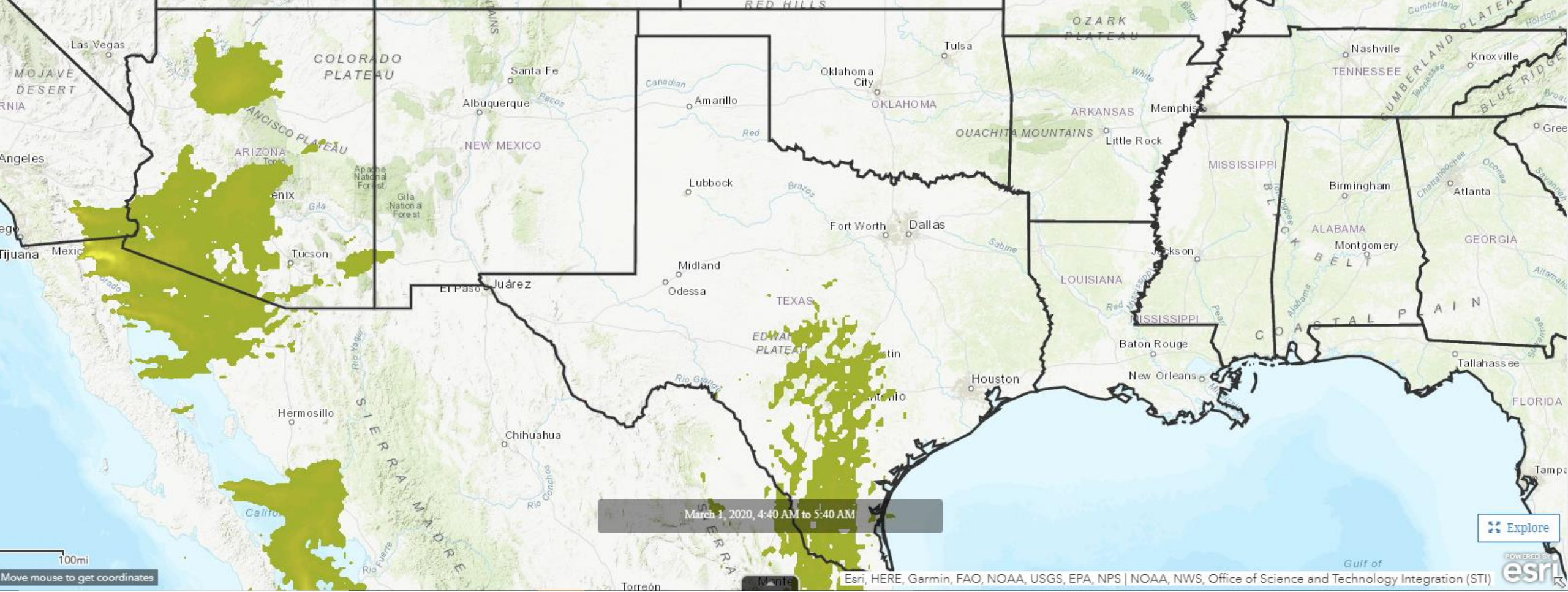
100mi  
Move mouse to get coordinates

Find address or place



# Dust Forecast

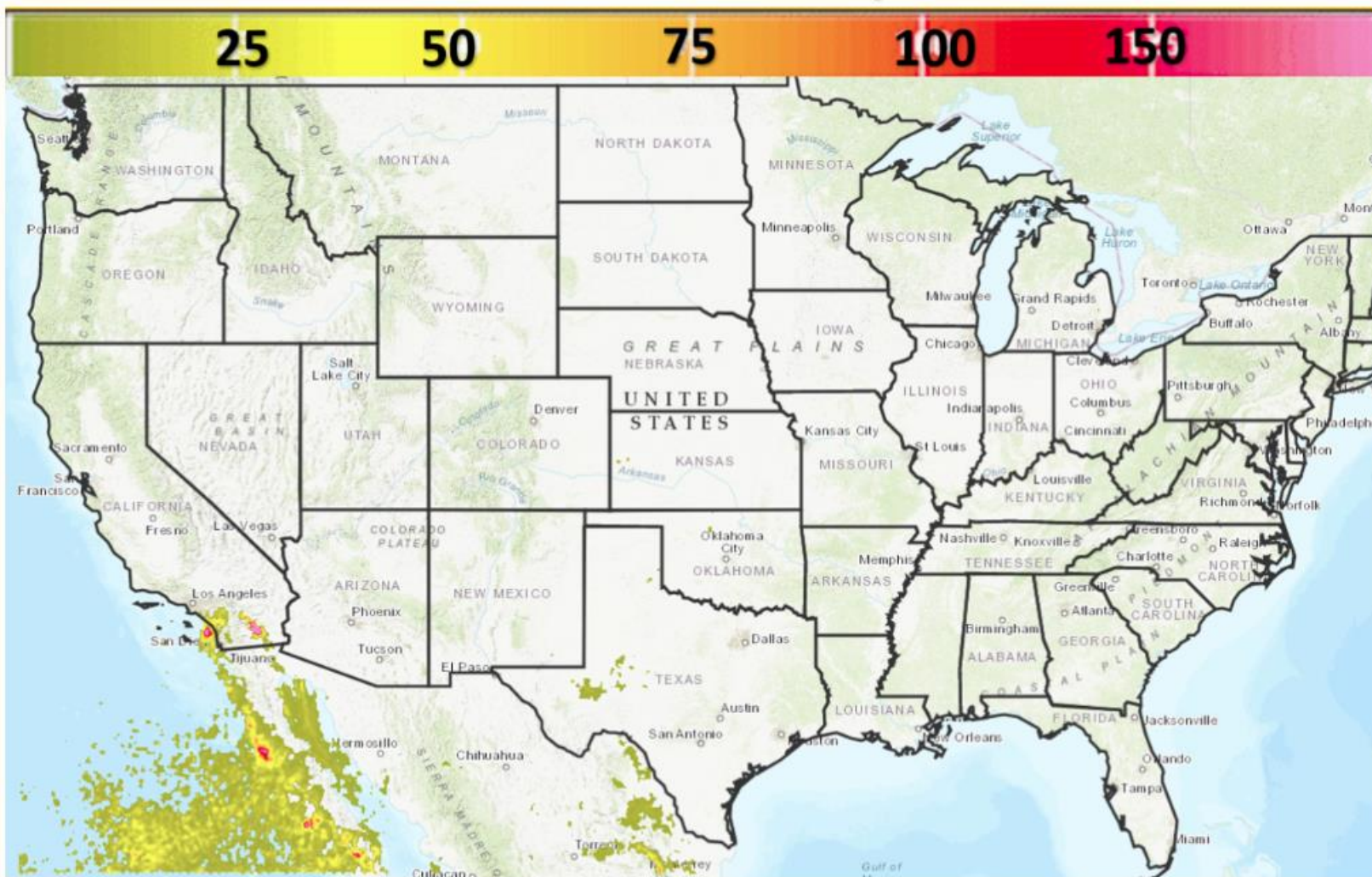
Most Recent Vertical Column Dust Forecast



March 1, 2020, 4:40 AM to 5:40 AM

Explore

# National Weather Service Air Quality – Dust Forecast



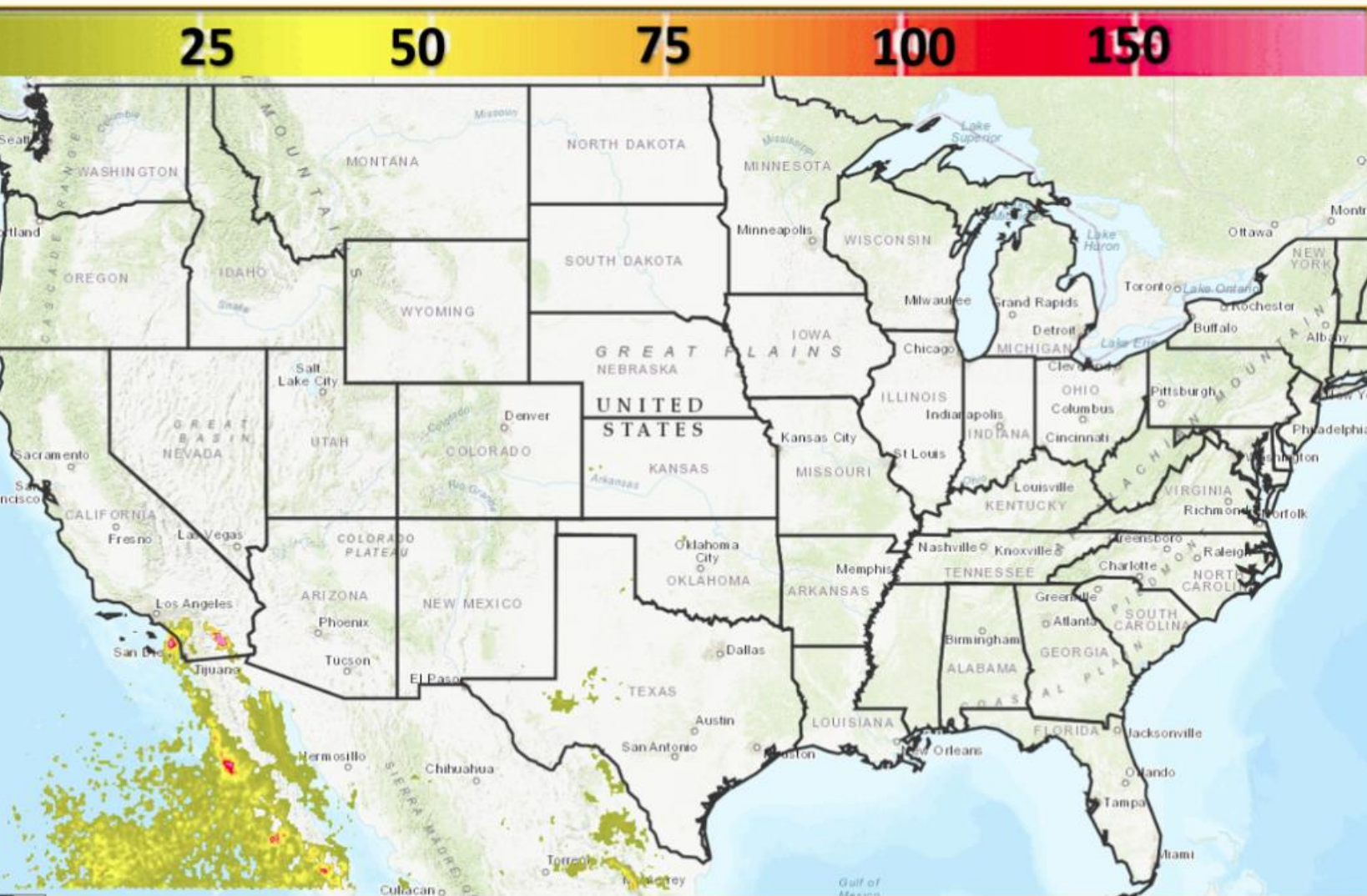
Predictions of wind driven dust emitted where surface winds exceed thresholds over source regions

MODIS + soil moisture used for source region detection and monitoring

HYSPLIT model used for transport, deposition, and dispersion

# Air Quality – Dust Forecast

## Limitations

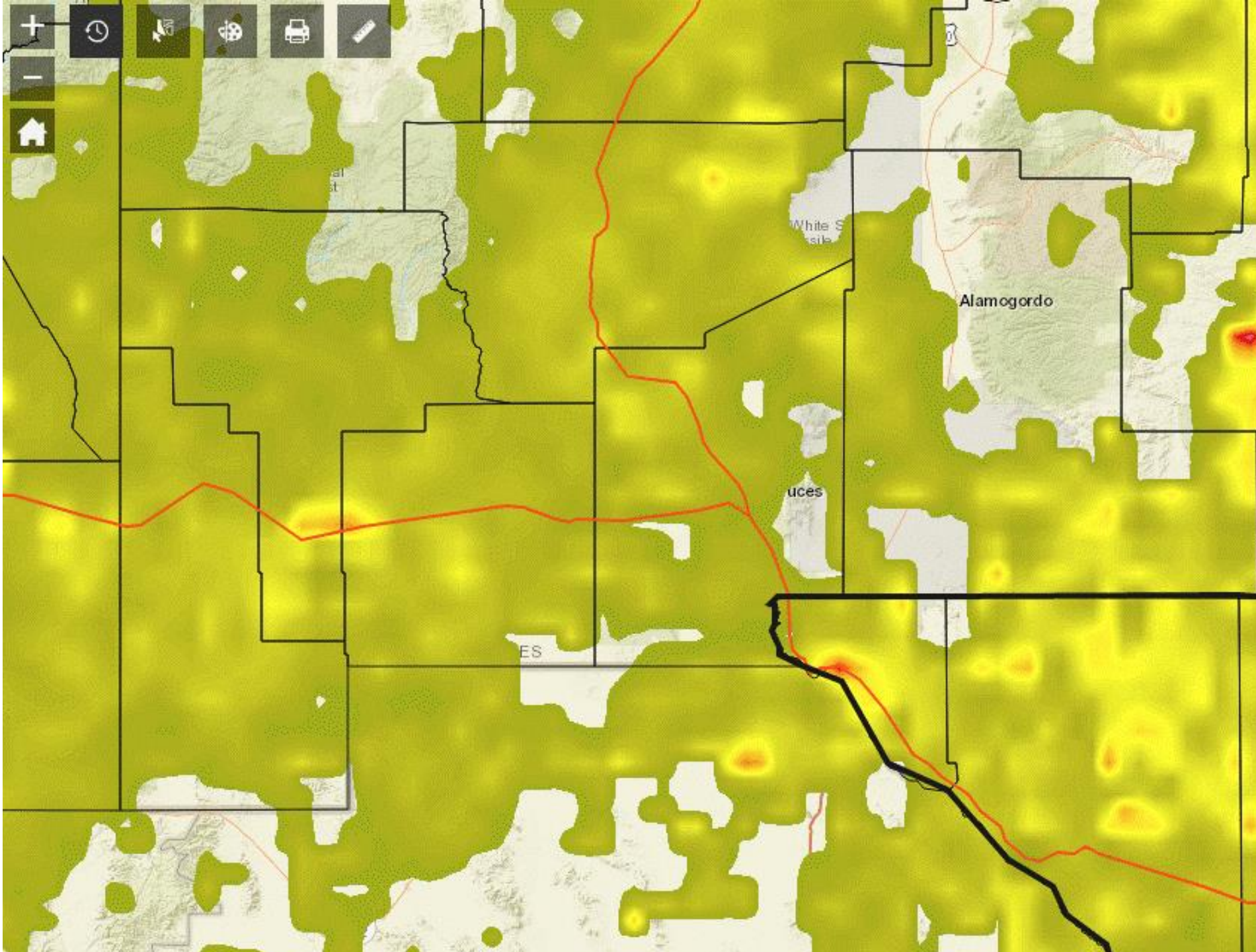


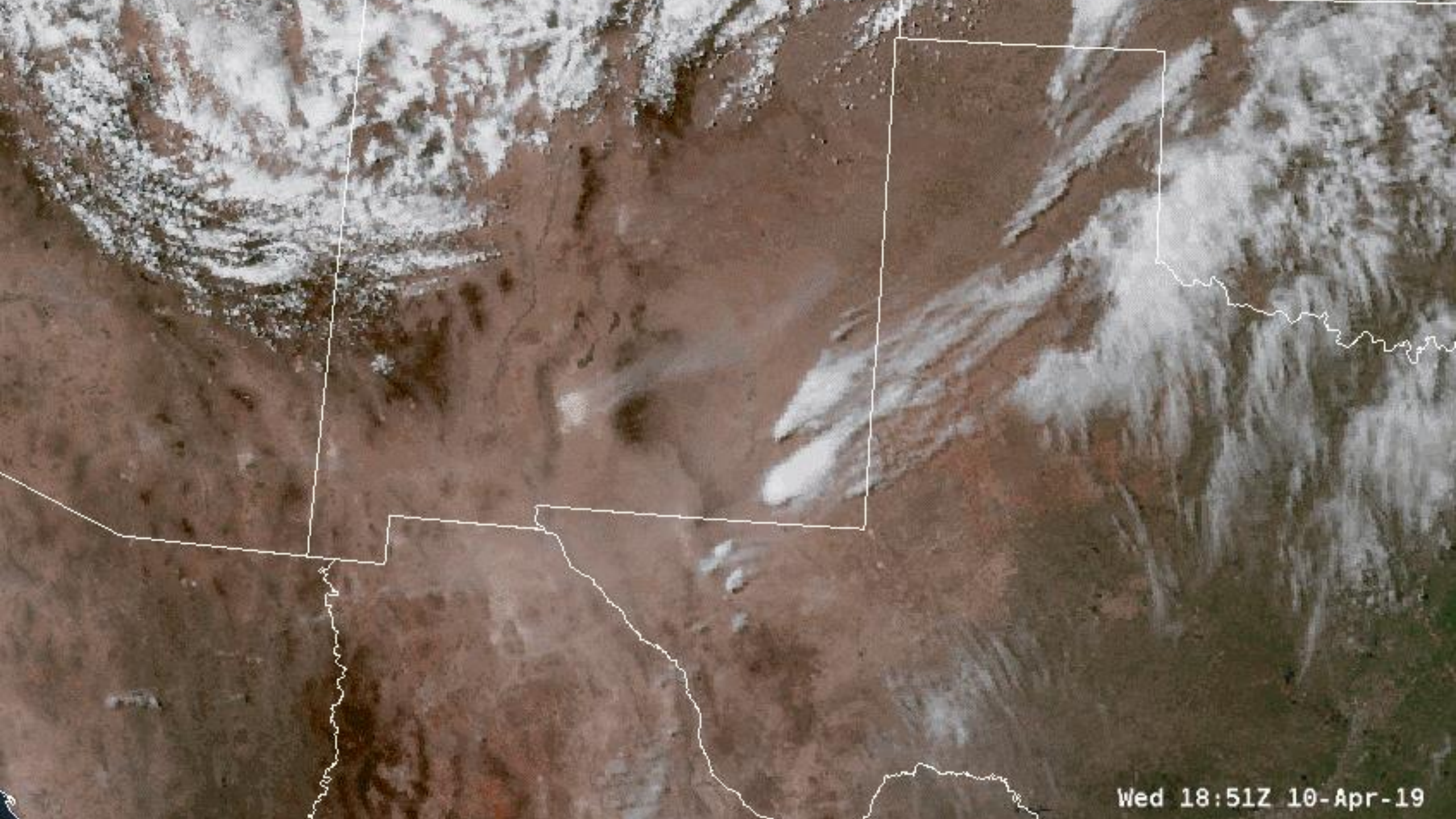
Updated only 2 times a day

Does not forecast dust storms originated from convective thunderstorms

Local effects such as activity on playas and other source regions are missed







Wed 18:51Z 10-Apr-19

**Can I get these NWS forecasts  
and monitoring tools all in one  
place?**

---

### List of Current Warnings

No Warnings At This Time

Last update: a few seconds ago

### Dust Storm Warnings

No Warnings At This Time

Last update: a few seconds ago

### Map Legend

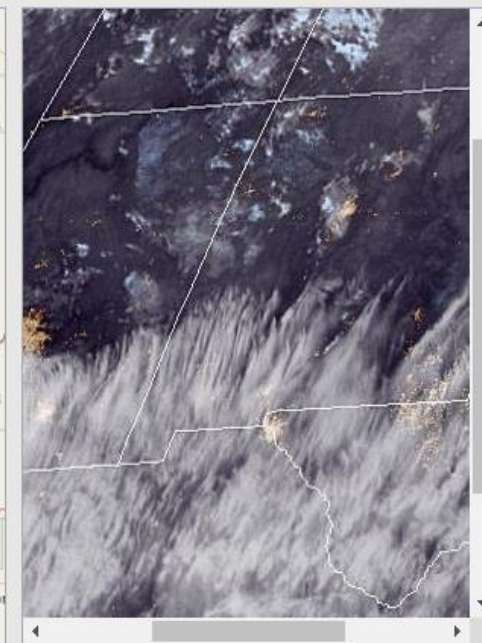
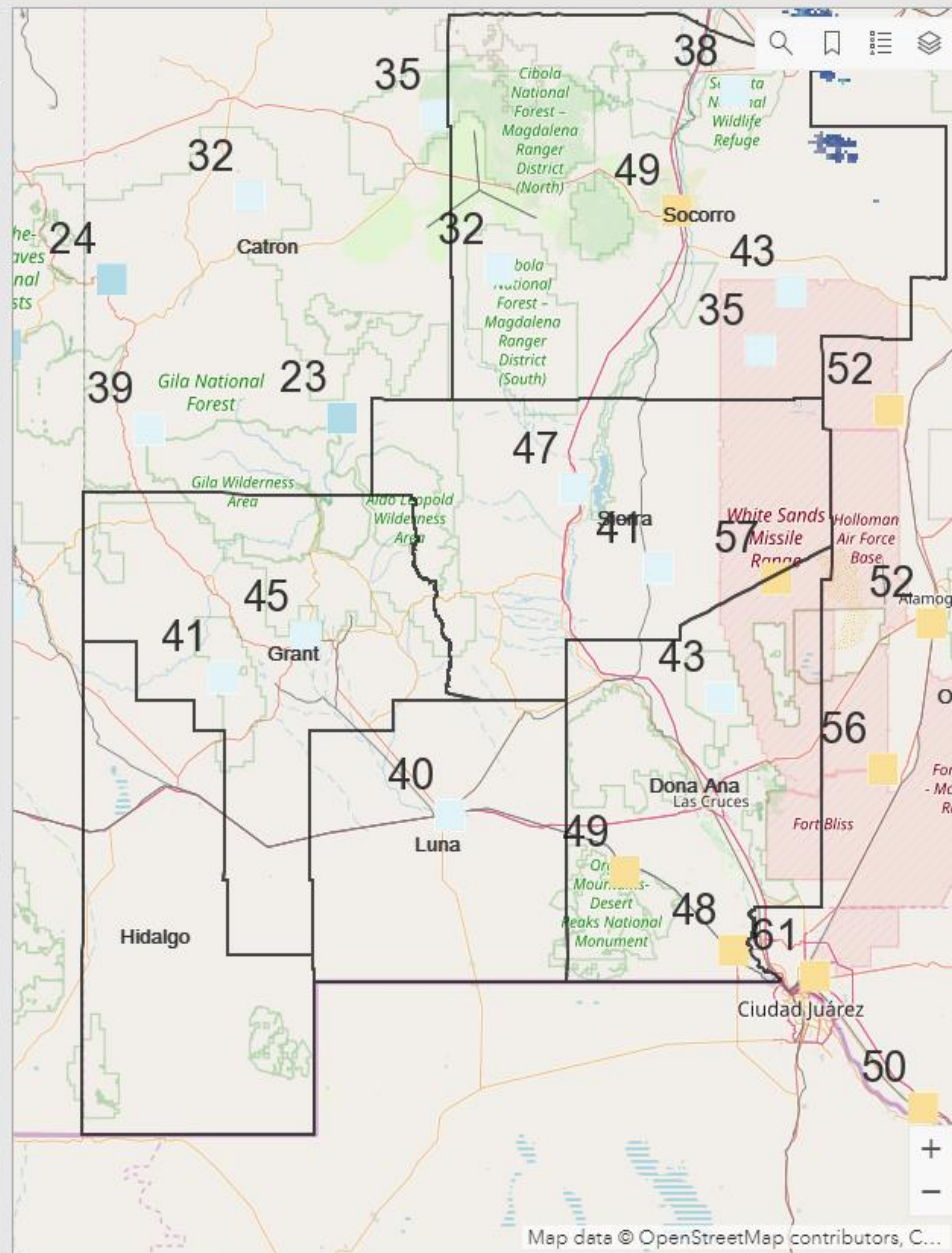
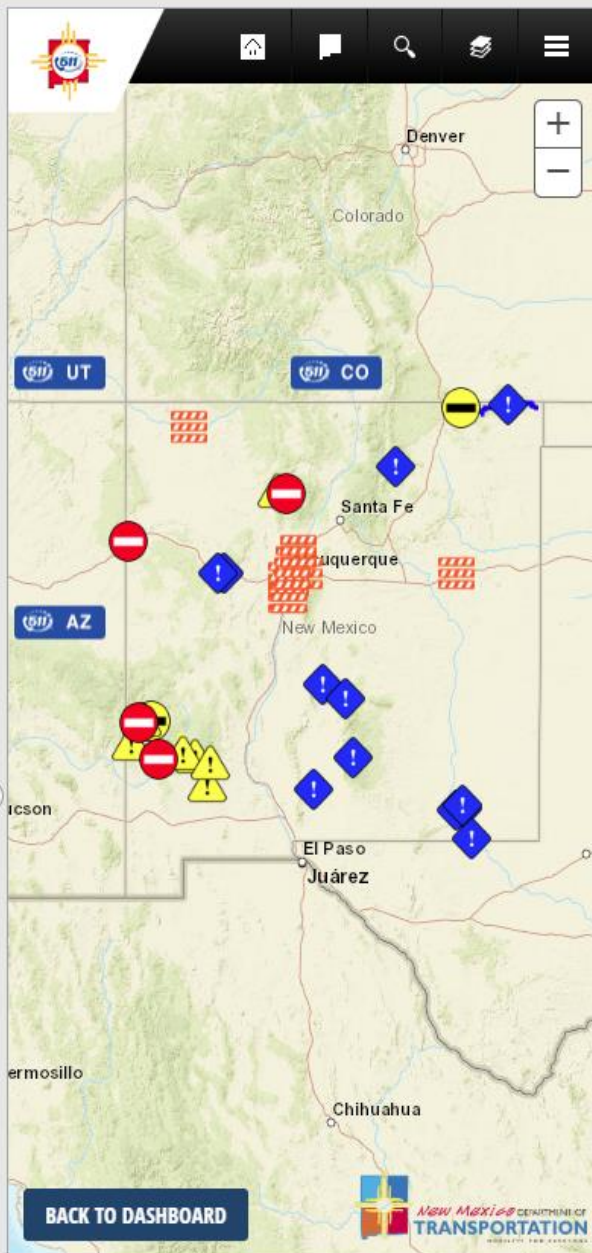
Storm Reports



NOAA's National Weather Service County Warning Areas

USA Counties

Dona Ana

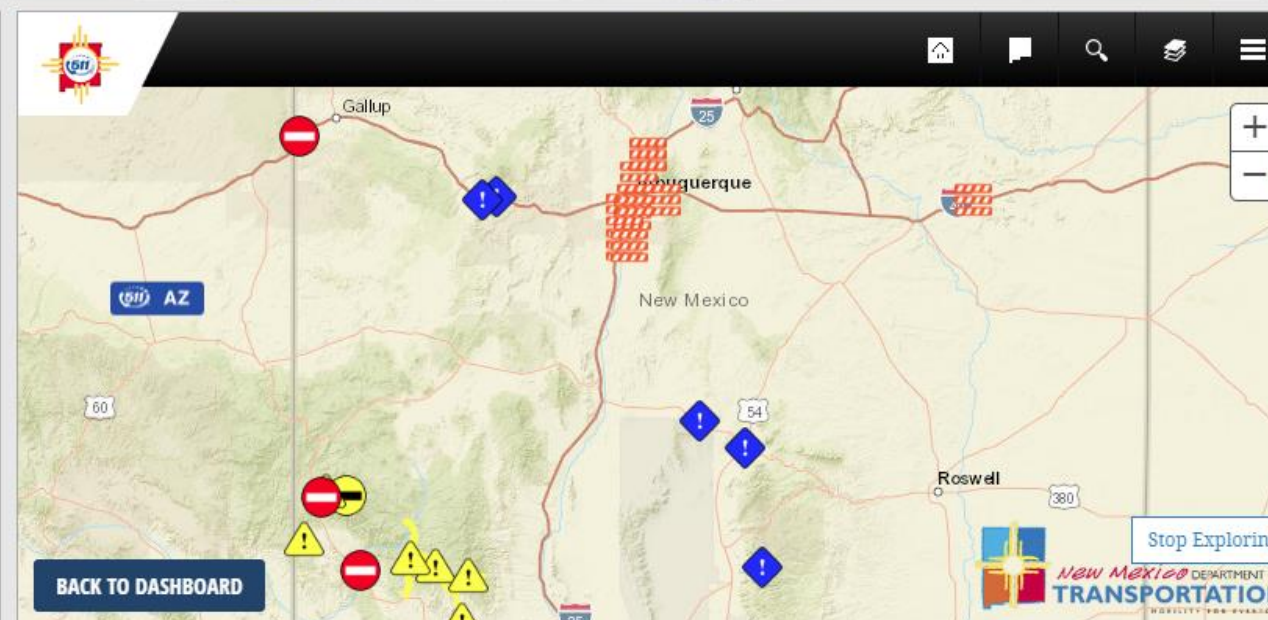
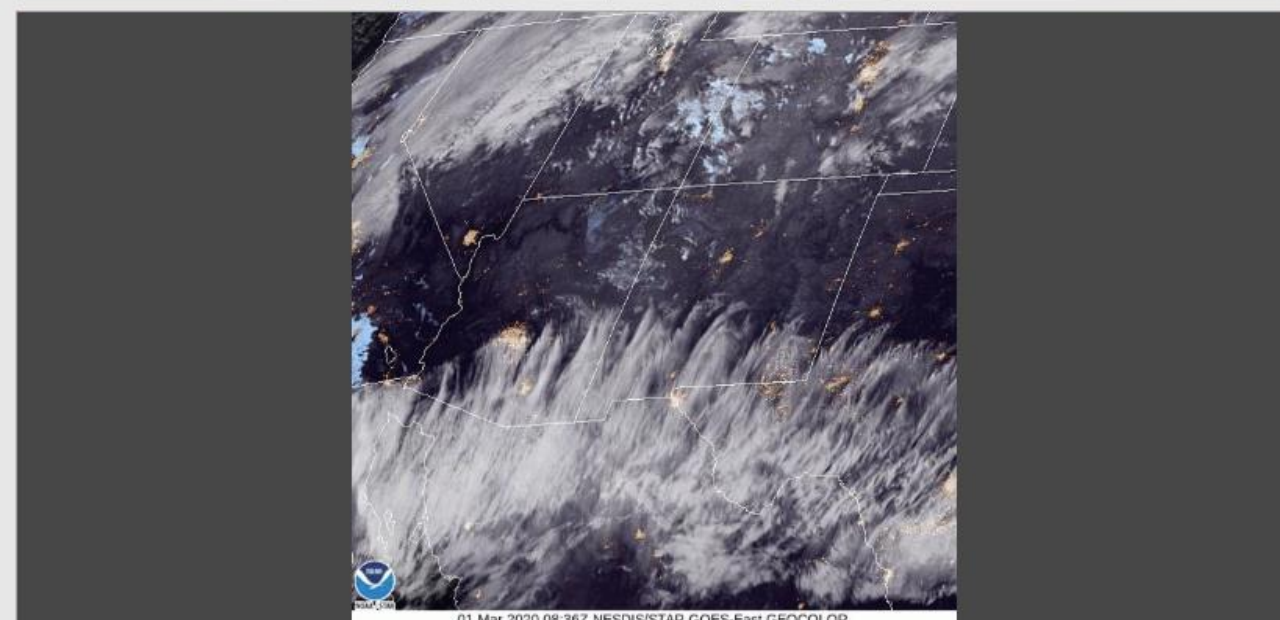
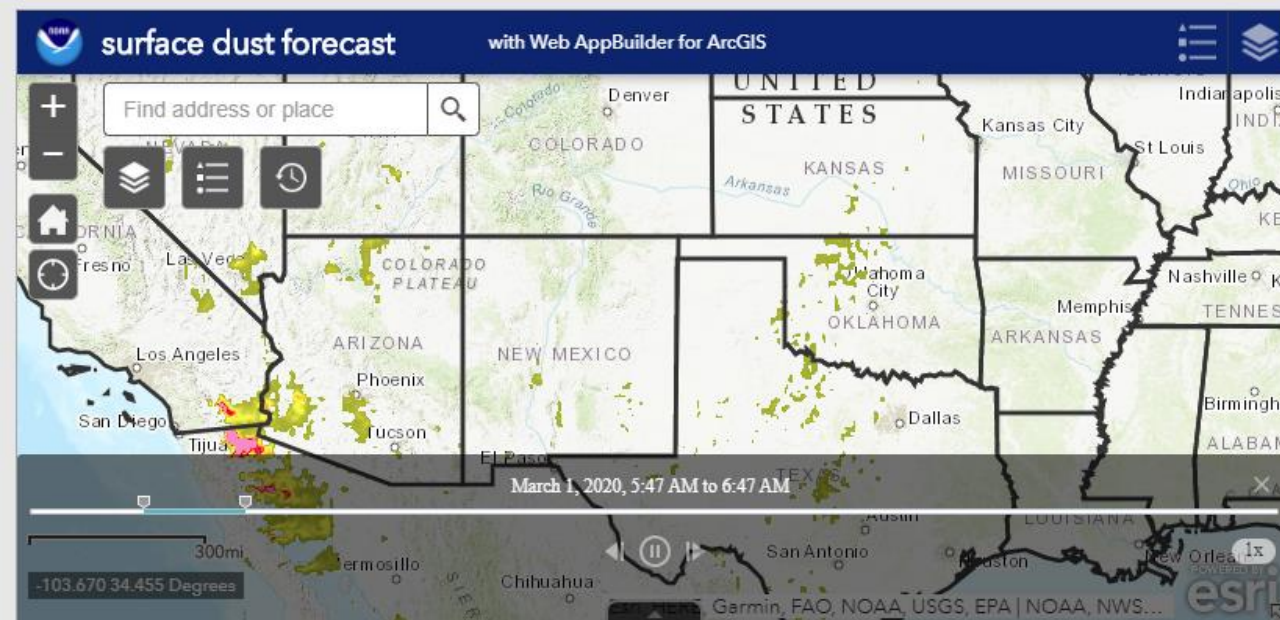


### Storm Reports

No Data

Stop Exploring

Last update: a few seconds ago





Thank you!  
Questions? Please email [eleanor.dhuyvetter@noaa.gov](mailto:eleanor.dhuyvetter@noaa.gov)

