



disaster preparedness report

8060 13th Street
Silver Spring, MD 20910
ATTN: W/OM11x1 - Dick Wood
(301) 427-8090

National Weather Service

September 1984

What's Happening in Disaster Preparedness

The new 24-minute Tornado Film "Terrible Tuesday" is currently being duplicated and should be arriving at all Eastern, Central, and Southern Region stations in October. We will initially send one copy of the film and videotape to each WSFO and one copy of the film to each WSO in these three regions. Twelve copies of the film and five copies of the videotape will be sent to the Western Region Headquarters for distribution in that region. One copy of the film and videotape will be sent to the Pacific and Alaska Regions. More copies of the film will be made available at a later date.

The new 28-minute film "Hurricane" is in its final stage and should also be available for distribution during October or November.

A new "Heat" foldout brochure (similar in size to NOAA Weather Radio NOAA/PA 76015) is in preparation and is scheduled for a spring 1985 release.

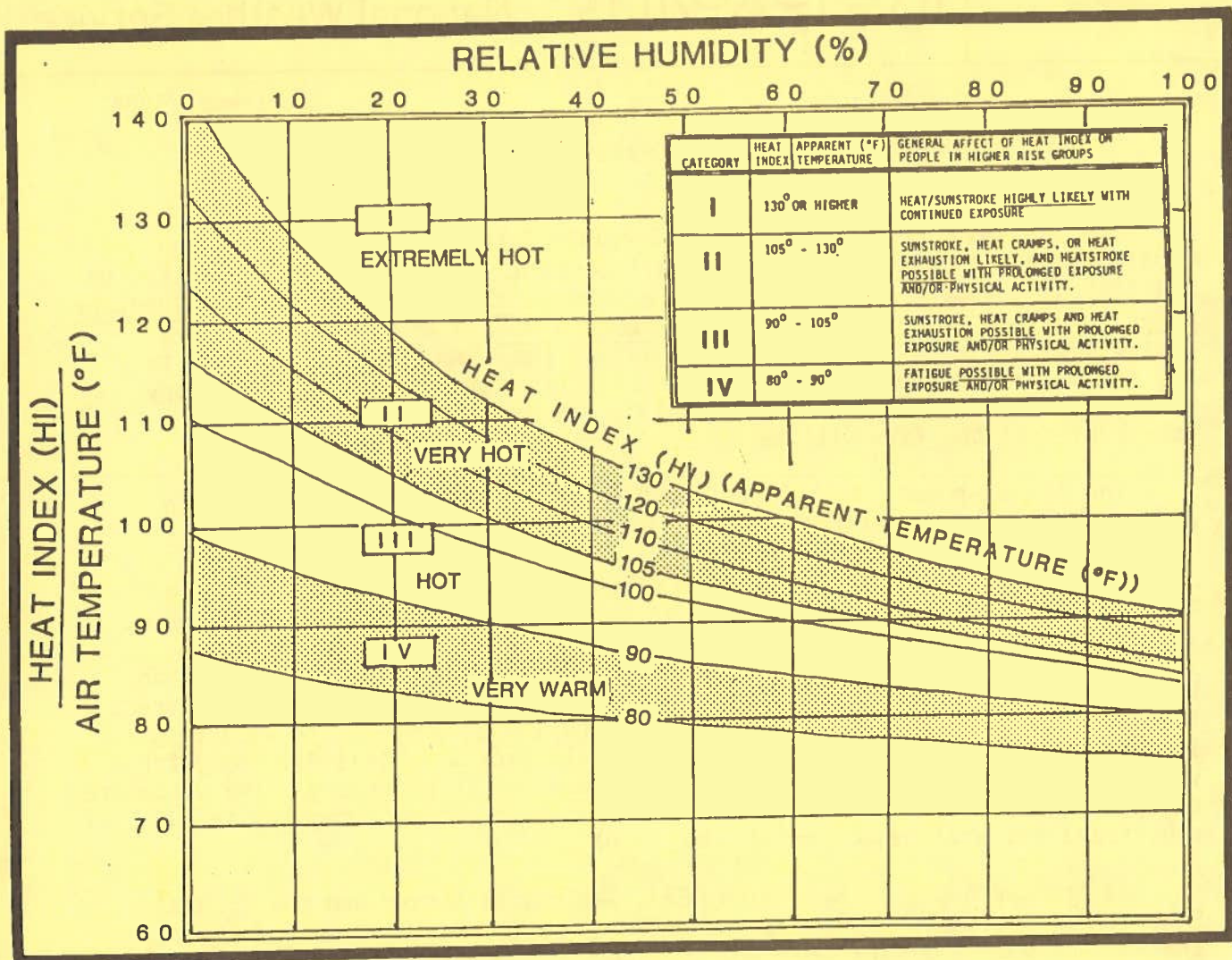
To cut down on paperwork for ordering publications and brochures, each Weather Service field office can order DP materials from NOAA/PA 82003 direct from NLSC, Kansas City. Please use NOAA Form 24-12, Request for Publication. If you need more than 500 copies, you may call Dick Wood (FTS 427-8090) for a verbal authorization, and no formal correspondence is necessary. The procedure outlined in Item 3.3.1 of WSOM C-49, Disaster Preparedness Program, is superseded and will be corrected with an OML.

We are currently working with FEMA, Geological Survey and the Corps of Engineers to possibly produce a Flash Flood/Flood Film which will focus on the Flash Flood/Floods in the Rocky Mountains in general and Utah in particular the past 2 years.

Heat Index Initiated On the first day of summer, June 21, the DOC/NOAA/NWS announced that a new Heat Index (HI) for alerting local officials and the public to the health hazards of excessive heat and humidity during heat waves would be initiated. The HI is a measure of the contribution humidity makes with high temperatures to reduce the human body's ability to cool itself. The HI is the temperature (in degrees) the body senses, based on normal humidity levels. For example, if the actual temperature is 100 degrees with a 40% RH, the effect of these conditions on the body would be the same as 110 degrees.

Threshold Heat Index values are now being determined by each WSFO MIC/AM. It is suggested that for most areas of the country increased emphasis should begin when a maximum HI of 105 or greater and/or a nighttime minimum of 80 or greater is expected to persist for at least 48 hours. Excessive heat/humidity conditions will be highlighted in local/zone forecasts, Special Weather Statements, the release of appropriate safety rules, and if necessary, in Civil Emergency Messages (CEM) coordinated with state health authorities.

Please remember, our terminology is HEAT INDEX. DO NOT use the terms "Apparent Temperature" or "Heat Stress" in our public releases on how heat and humidity affects people.



The following results of a survey appeared in the June 1984 issue of the magazine "Hazard Monthly:"

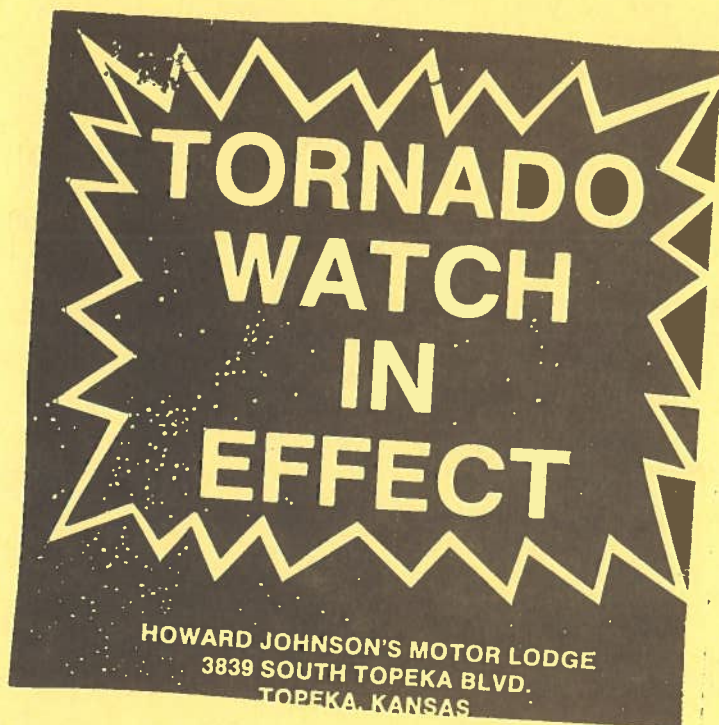
- . Few communities actually seem to be properly prepared for a crisis or disaster.
- . Local governments report over \$16 billion in property losses, 2,490 deaths, and 9,161 injuries from disasters since 1970.
- . Most local governments (83% of cities and 90% of counties) have a formal emergency management plan.
- . Only 58% of cities and 72% of counties actually test their plans annually.
- . Communications and coordination problems were reported as the major difficulty during the last disaster.
- . Only 81% of cities and 73% of counties consider their technology to be sufficient when responding to emergencies.

- City and county managers have, in recent years, become more aware of the need to prepare adequately for emergencies.
- The threat of a major disaster striking an American city today is greater than ever before in our history.
- Cities and counties with professional administrators had a noticeably higher rate of response than did those with other forms of government.

Warning Response The importance of early warning and advance preparedness was well illustrated in a Georgia newspaper article which described a community's response to the May 3rd storms. A hospital administrator stated, "Once the hospital received notice of tornado warnings from the National Weather Service, beds of those patients who could be moved were immediately taken into the halls." Examples of school children taking cover in hallways and bus passengers fleeing to ditches were documented in the article.

Phil Snideler, AM/MIC WSFO, Topeka, reports that the local Howard Johnson's Motor Lodge coordinated with their office a year or so ago to set up a preparedness plan. While the plan is not totally adequate, Howard Johnson's should be commended for an effort which most motels and hotels ignore. According to local officials, the plan has been well received by travelers and is to be adopted nationwide by Howard Johnson's Motor Lodge. When a tornado watch is in effect, one of the 5" by 5" notices is provided to guests as they check in or is handcarried to their rooms. The management indicated that they have frequent requests from guests for these cards to be kept as souvenirs.

Certainly, more could be done, but this at least calls the attention of guests to the potential for severe weather and directs them to broadcasts where current information is available, and suggests a plan of action. The plan of action leaves a lot to be desired, but here again, better than nothing. Phil had suggested they get guests off of the second floor, but they elected to suggest bathrooms where they were because nothing better was available.



This Lodge is located in the Southern part of Topeka. Topeka is located in the center of Shawnee County.

Phase 1: Tornado Watch

Tornados are possible in and close to the watch area; atmospheric conditions are right for formation of a tornado. Persons in affected counties for threatening weather conditions should listen for later statements and possible warnings.

Phase 2: Tornado Warning (Take Cover Alert)

Tornado has been sighted. We suggest bathroom area of your room with door closed.

For weather information—local television with cable channels 7 & 12, which are channels 27 & 13.

**HOWARD JOHNSON'S MOTOR LODGE
3839 SOUTH TOPEKA BLVD.
TOPEKA, KANSAS**

- o Davis County (Utah) Emergency Services for Community Emergency Videotape Project focusing on earthquakes, floods, and other hazards facing the region.
- o Valley Women's Club of San Lorenzo Valley, California, for Neighborhood Self-Sufficiency Emergency Information Project in an area where earthquakes, fires, and floods are a constant threat. The proposed project grew out of experiences with disastrous storms and flooding in the area in 1982.
- o Government of Guam for Multi-Hazard Public Information Campaign for Youths 10-18 addressing a range of hazards, including typhoons, tsunamis, flooding, storm surge, landslides, lightning, tornadoes, and windstorms.
- o City of Portland, Oregon, for Portland Regional Emergency Consortium Information Packet -- for Non-English Speaking Audiences to develop a vivid and graphic system of universal symbols, signs, and drawings that clearly convey and depict emergency education and information with a minimum of text for weather-related and man-made hazards.
- o Research Alternatives, Center for Application of Science and Technology to Emergency Management, Rockville, Maryland, for Saving Lives: The Emergency Management Computer Game.

One component of the game will be designed to increase awareness of a number of hazards: tornado, hurricane, flood, winter storm, lightning, earthquake, flash flood, and slow-building flood.

FEMA invites NWS offices support and active involvement in Challenge Grant Projects through participation in coalitions or by offering expertise in an advisory role. For further information contact Stacy Gerard and Chris Rossomando, Office of Public Affairs, FEMA, 500 C Street S.W., Washington, D. C., 20472, phone (202) 287-0300. They will be happy to put you in contact with the project managers.

DISASTER PREPAREDNESS ROSTER		SEPTEMBER 1984	
<u>NWS HEADQUARTERS STAFF</u>		<u>FTS - 427-8090</u>	<u>CENTRAL REGION</u>
Richard I. Coleman, W/OM11	Chief, Severe Weather Branch	Paul Dailey	Regional (WPM) 758-3239
Richard A. Wood, W/OM11x1	Program Leader, Disaster Preparedness	Glenn Audsley	Regional Hydrologist 758-3229
Lorraine V. Brown, W/OM11x1	Clerk, Disaster Preparedness	Robert Somrek	Chicago (Focal) 353-4680
<u>EASTERN REGION</u>			Vacant 378-2220
Eugene Kilgore	Regional (WPM) 649-5455	Brian Dowd	Des Moines (Focal) 862-4492
Albert Kachic	Reg. Hydrologist 649-5464	William Gery	Indianapolis (Focal) 331-4035
Vacant	Cleveland (WPM) 942-4949	Glenn Austin	Louisville (Focal) 352-5210
Mary Jo Parker	Columbia, SC (WPM) 677-5501	Guy Tucker	St. Louis (Focal) 279-7018
Vacant	Philadelphia (WPM) 590-2256	Kay Meehan	Sioux Falls (Focal) 782-4244
Vacant	Parkersburg (WPM) 923-1344	Steven Schurr	Topeka (Focal) 752-2630
Rich Schwerdt	Washington, D.C. 763-8275	Vacant	Denver (Focal) 327-3611
Ralph Izzo	New York (Focal) 662-5340	Richard Hickey	Cheyenne (Focal) 328-2376
Tim Scrom	Albany (Focal) 562-6586	Tom Zajdel	Milwaukee (Focal) 362-3243
Tom McGuire	Boston (Focal) 223-1354	John Miller	Minneapolis (Focal) 725-3400
Tom Dunham	Buffalo (Focal) 437-4800	Richard May	Bismarck (Focal) 783-4224
Tom Bietel	Philadelphia (Focal) 597-0845	Gary Wiese	Omaha (Focal) 864-4207
Theresa Rossi	Pittsburgh (Focal) 722-2882	<u>WESTERN REGION</u>	
Dave Sisk	Pittsburgh (Focal) 722-2882	Mark Fair	Regional (WPM) 588-4000
Joe Ronco	Portland (Focal) 833-3552	Tony Haffer	Deputy Reg. Hydrologist 588-5137
Laurence Lee	Raleigh (Focal) 672-4436	Al Dreumont	Boise (Focal) 554-9860
<u>SOUTHERN REGION</u>		Chuck Conway	Los Angeles (Focal) 793-7215
Larry Mooney	Regional (WPM) 334-2812	Steve Sipple	Phoenix (Focal) 261-3500
Vacant	Atlanta (WPM) 246-7586	Don Northrop	Portland (Focal) 423-4340
Jay Shelley	Birmingham (WPM) 229-0837	Thomas Cylke	Reno (Focal) 470-5719
David Martin	Fort Worth (WPM) 334-3401	Bill Alder	Salt Lake City (Focal) 588-5133
Ron Stagno	Houston (WPM) 526-5834	Norm Hoffman	San Francisco (Focal) 463-7767
Dennis Decker	Jackson (WPM) 490-4639	Charles Ruscha	Seattle (Focal) 446-6087
Nelson DeVilliers	Little Rock (WPM) 740-5331	Dave Olsen	Great Falls (Focal) 585-1311
Alfonso Castaneda	Lubbock (WPM) 738-7362	<u>ALASKA REGION</u>	
Brian Peters	Memphis (WPM) 222-3833	Burt Goldenberg	Regional (WPM) 8-907-271-5127
Don DeVore	Oklahoma City (WPM) 749-4155	<u>PACIFIC REGION</u>	
Bill Hare	San Antonio (WPM) 730-5025	Takase (Dick) Hiyane	Regional (WPM) 8-808-546-2853
Francisco Torres-Cordero	San Juan (WPM) 8-809-753-4893		
Ralph Pike	Albuquerque (Focal) 474-2170		
Jim Belville	New Orleans (Focal) 682-6891		
Larry Lahiff	Miami (Focal) 350-5547		

Weather Spotters Fill the Gap

If a tornado were bearing down on your town, would you be able to mobilize a disciplined Weather Alert Net? In the St. Louis area, WARN lives up to its name.

By Michael G. Redman*

“WBØHSI from WCØAAF ... report from spotter 18016 of a tornado on the ground north of his location ...” That’s a typical message heard on the amateur bands during severe weather in the St. Louis area. Trained weather spotters, many of them hams, are assisting the National Weather Service (NWS) and the St. Louis County Office of Civil Preparedness in providing and relaying vital weather information.

The St. Louis County plan is called *WARN*, for Weather Alert Radio Net. *WARN* is operated by the St. Louis County ARES/RACES organization under the leadership of KBØEA (ARRL District Emergency Coordinator), AGØG (ARRL Emergency Coordinator for St. Louis County) and NØBKH (ARRL Emergency Coordinator for the City of St. Louis), with the assistance of WBØPDK and KØDCQ.

Each prospective weather spotter attends one of several three-hour training sessions held each March. Spotters are required to be retrained every two years. Taught by a meteorologist from the NWS office in St. Peters, Missouri, the sessions cover what to report, where to report and how to report. The meteorologist also teaches spotters how to identify tornadoes and tornado-producing storms through movies and slides of actual storms. There is no charge for any of the training.

An operating committee of five Amateur Radio operators was selected to oversee their portion of the *WARN* system. They form a pool from which hams are picked for duty at WCØAAF, the Emergency Operations Center (EOC). The primary liaison between the County and the Amateur Radio club carries a pager on the

A Message from the SEC

The accompanying article describes an example of high-quality ARES service and good interaction between Amateur Radio operators and governmental agencies and personnel. The *WARN* program covers the Greater St. Louis ARRL District, which is comprised of three counties and the City of St. Louis.

The Missouri Section is in a growth period, now having 10 Districts, each with a District Emergency Coordinator, and ECs as locally appropriate. There is a potential of 35 Districts in Missouri. Some areas now have emergency-communication programs, but in most cases they could easily benefit from access to the statewide program, better contact with local and state emergency management people, and ARRL guidance, not to mention the needs suddenly presented by a widespread disaster.

Local Amateur Radio clubs of Missouri, or individuals where there are no clubs, are invited to contact the ARRL Section Manager (Ben Smith, KØPCK, RFD #1, Prairie Home, MO 65068) or the Section Emergency Coordinator (Don Blenden, WBØKUW, 1506 North Circle, Columbia, MO 65201) for information and advice on how to establish (or improve) an effective ARRL-sponsored ARES program.

— WBØKUW

County’s paging network so that he can be reached at a moment’s notice. Members of this committee must reside in St. Louis County and successfully pass a background investigation. The program is coordinated by the Communications Specialist, St. Louis County Police/Civil Preparedness.

Activation of *WARN* occurs when a tornado watch is issued or upon NWS request if potentially dangerous thunderstorms are expected. The Communications Specialist and Civil Preparedness Duty Officer report to the EOC (if not already on duty there). The Amateur Radio liaison is contacted to direct at least two amateurs to the EOC. Upon arrival, one operator is assigned to

the St. Louis County Net (WØKUJ/R, 34/94), while the other ham relays information to amateurs at the NWS office via WBØHSI/R (07/67), manned by the St. Charles County Amateur Radio Club. At times, a third unit is utilized on 3963 kHz to contact amateurs elsewhere in Missouri (the Missouri Weather Net). A Missouri Weather Wire teleprinter is also available at the EOC.

If a tornado warning is issued, St. Louis County activates its 206 outdoor warning sirens (the largest such system in the country). The radio-controlled sirens can be activated from either the EOC or the County Police Hq. Most of the sirens are electronic and are capable of public address if desired. Specially designed lighted maps at both activation points show each siren location, and give visual indication of siren use and function.

NWS personnel have praised spotters for their activity reports in areas where weather radar is unable to accurately indicate what a storm is doing. Often, *WARN* members in a particular area assist NWS personnel in evaluating thunderstorm data — a key element in the decision to issue weather warnings. In many instances, spotters identify and track tornadoes *never seen* on radar. And, of course, all spotting is done by trained, concerned citizens — free of charge.

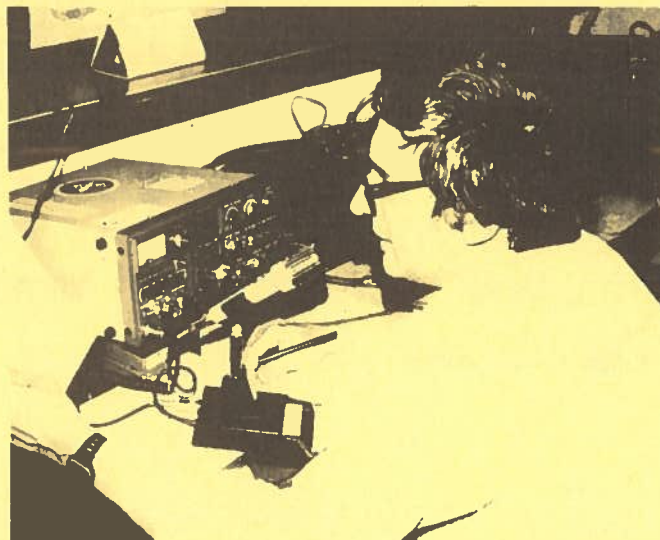
An added tool used by NWS and other agencies is the *NAWAS* (National Warning System). This is an open-line, “party type” telephone network designed for immediate notification in the event of nuclear attack. The *NAWAS* circuits receive heavy use during severe weather and provide an added means of notification. Monitoring the system provides a barometer of conditions to the west of St. Louis in addition to information received via *WARN*.

Each trained spotter is assigned a number, identifying the spotter’s home in

*Communications Specialist, St. Louis County Police Department, 7900 Forsyth, Clayton, MO 63105



WARN volunteer WBØPDK transmits late-breaking weather information over WØKUJ/R.



NØBKH transmits a severe-weather advisory over the Missouri Weather Net on 3963 kHz.

distance and direction from the NWS office. For example, spotter number 18016 would be 180° (south) at 16 miles. This data enables the radar operator to plot this location quickly and check it on the radar screen. No time is lost translating other forms of coded numbers or street locations into something the radar operator can quickly use.

Early each morning, the NWS radio station is monitored. The Severe Weather Outlook is broadcast if there is a chance of bad weather. If bad weather is indicated, other indicators are monitored, information from the Missouri Weather Wire is studied, and hourly condition updates are monitored. When a severe-thunderstorm watch is issued, events might unfold as follows.

Severe-Weather Scenario

The Communications Specialist makes contact with the Amateur Radio liaison to advise him of the situation and check on his availability. NWS is also contacted to check on the weather picture. The NAWAS line is monitored for severe weather to the west.

Each afternoon brings a flurry of activity on the NAWAS circuit. A high level of severe thunderstorms is reported in southwest and southern Missouri. Several funnel cloud observations are intercepted. Activity is still some distance from St. Louis. Conditions outside are hot and sticky, with mostly sunny skies.

Late in the afternoon, a tornado watch is issued for the entire St. Louis area. The Amateur Radio liaison is notified to report to the EOC with two additional operators. The Duty Officer for the Office of Civil Preparedness is contacted and will remain at the EOC. NWS advises that storms will enter St. Louis County in one or two hours.

The Communications Specialist then

reports to the EOC. He arrives simultaneously with the amateur operators. The Communications Specialist and the Civil Preparedness Duty Officer check radio equipment that will be used, and begin to plot the path of the storms on a large state map. The Amateur Radio liaison and his staff activate WARN and take check-ins. Available data from the Weather Wire teleprinter is selected for transmission. Amateur Radio contact is made with NWS in St. Peters. The approaching line of storms is about 45 minutes away.

Dark, ominous clouds approach the EOC from the west. The emergency generator is fired up in the event of power failure. Amateurs begin receiving high-wind and hail reports from WARN spotters in counties to the southwest. This information is relayed to NWS via WBØHSI/R. Severe thunderstorm warnings are issued for counties to the southwest. The police communications office is advised of the approaching storms as extra telephone and radio positions are manned. The Civil Preparedness Director is advised of the conditions and continues to monitor the situation closely.

Reports are received of golf-ball-sized hail in the county just west of St. Louis. Severe-thunderstorm warnings are issued for St. Louis County. The amateurs continue to relay information from the network of WARN spotters. An amateur at the western edge of St. Louis County reports an ominous green sky and a rotating wall cloud.

NWS activates (via the NAWAS circuit) the Siren Warning System. Tornado warning in effect! The Radio Warning System is also activated, and key personnel are notified. Amateurs transmit the warnings as sirens sound all over the County. Radios are humming with reports of funnel clouds and severe weather.

Phones at the EOC and Police Hq. are ringing with severe-weather information. All the information is relayed to the NWS via Amateur Radio as quickly as possible.

Spotters continue to follow the funnel sightings across St. Louis County. Tornado warnings are issued for counties east of St. Louis. No damage reports or touchdown occurred, yet trained WARN spotters were able to track the storms accurately while weather radar never detected a tornado! Once the threat of further severe weather has passed, the EOC is secured and all volunteers are released. County staff personnel return to normal assignments.

WARN: There When It's Needed

It is indeed fortunate that most tornado watches do not result in tornadoes. Nevertheless, St. Louis County's Amateur Radio operators assist in many other ways in addition to weather spotting. For example, they provided communications backup and information on vehicular traffic movement during the heavy snowstorm of February 1982. They will work long hours voluntarily since public service is their primary motivation and concern. No one can prevent the onslaught of severe weather and tornadoes, but with a program like WARN, advance warnings will always be given and countless lives will be saved.

Michael G. Redman has served as the Communications Specialist for the St. Louis County Police Department and Office of Civil Preparedness for the past three years. He has attended state seminars on civil preparedness, and designed the Communications Van and County Emergency Operations Center communications facility — one of the best equipped in the Midwest. Redman also developed the current county Weather Spotter Program utilizing Amateur Radio volunteers, and has designed a new radio system for the County Highway Department. He is a member of APCO (the Associated Public Safety Communications Officers, Inc.) and is a past president of the 2500-member Radio Communications Monitoring Association.



U.S. DEPARTMENT OF COMMERCE
National Oceanic and Atmospheric Administration
NATIONAL WEATHER SERVICE
Silver Spring, Md. 20910

September 25, 1984

W/OM11x1:RAW

TO: Addressees Listed Below

FROM: W/OM11x1 - Richard A. Wood *D.W.*

SUBJECT: Ordering Copies of the New Tornado and Hurricane Films and Videotapes

Requests for the 24-minute "Terrible Tuesday" and the 28-minute "Hurricane" films and videotapes from FEMA-related agencies, such as Emergency Services, state, county, local Civil Defense groups, etc., should be referred to Ms. Stacey Gerard, FEMA Public Affairs, 500 C Street, S.W., Washington, D.C., 20472 (202-287-0318). Copies will be made available from FEMA at no cost to FEMA-related agencies.

Requests for the films and videotapes of "Terrible Tuesday" and "Hurricane" from the general public, universities, etc., should be referred to the National Audiovisual Center, General Services Administration, Washington, D.C., 20409 (301-763-1896). Cost for the "Terrible Tuesday" film will be \$245 and \$90 for the videotape. Cost for the "Hurricane" film has not been established but probably will be about the same.

The "Terrible Tuesday" film and videotape have been printed and should arrive at NWS field stations by the first week in October. We will initially send one copy of the film and videotape to each WSFO and one copy of the film to each WSO in the Eastern, Central, and Southern Regions. These three regional offices (W/ERx2, W/CR1x1, W/SR1x4) will receive six copies of the film and videotape. Twelve copies of the film and five copies of the videotape will be sent to the Western Region Headquarters for distribution in that region. One copy of the film and videotape will be sent to the Pacific and Alaska Regions. More copies of the film will be made available at a later date. Copies for FEMA-related agencies and the National Audiovisual Center will not be produced until late October or November.

ADDRESSEES:

W/ERx2
W/ER1x1
W/SR1x4
W/CR1x1
W/WR1x1
W/AR1
W/PRx2



10

[Faint, illegible text covering the majority of the page]

10

10

10

.....
Program Director
1024 N. Rampart St.
New Orleans, LA 70116

.....
Program Director 17:
2820 E. Saginaw
Lansing, MI 48904

Program Director
Box 659
Jefferson City, MO 65102

KSLA-TV
Program Director
Box 4812
Shreveport, LA 71104

KBJR-TV
Program Director
KBJR Bldg.
Duluth, MN 55802

KODE-TV
Program Director
Box 46
1928 W. 13th St.
Joplin, MO 64801

KTAL-TV
Program Director
3150 N. Market St.
Shreveport, LA 71007

KDLH-TV
Program Director
425 W. Superior St.
Duluth, MN 55802

KSNF
Program Director
Box 1393
Joplin, MO 64802

KTBS-TV
Program Director
312 E. Kings Highway
Box 44227
Shreveport, LA 71104

WDIO-TV
Program Director
10 Observation Rd.
Duluth, MN 55811

KMBC-TV
Program Director
11th & Central Sts.
Kansas City, MO 64105

WDIV
Program Director
550 W. Lafayette Blvd.
Detroit, MI 48231

KSTP-TV
Program Director
3415 University Ave.
St. Paul, MN 55114

WDAF-TV
Program Director
Signal Hill
Kansas City, MO 64108

WEYI-TV
Program Director
2225 W. Willard Rd.
Clio, MI 48420

WCCO-TV
Program Director
90 S. 11th St.
Minneapolis, MN 55403

KMOX-TV
Program Director
1 Memorial Dr.
St. Louis, MO 63102

WJRT-TV
Program Director
2302 Lapeer Rd.
Flint, MI 48503

WTCN-TV
Program Director
441 Boone Ave. N.
Minneapolis, MN 55427

KSDK
Program Director
Television Plaza
1000 Market St.
St. Louis, MO 63101

WNEM-TV
Program Director
Box 531
107 N. Franklin St.
Saginaw, MI 48606

WAPT
Program Director
Box 10297
Jackson, MS 39209

KTVI
Program Director
5915 Berthold Ave.
St. Louis, MO 63110

WOTV
Program Director
Box B
Grand Rapids, MI 49501

WJTV
Program Director
Box 8887
Jackson, MS 39204

KOLR-TV
Program Director
Box 1716 SSS
Springfield, MO 65805

WZZM-TV
Program Director
Box Z
Grand Rapids, MI 49501

WLBT
Program Director
715 S. Jefferson St.
Jackson, MS 39205

KYTV
Program Director
999 W. Sunshine
Springfield, MO 65804

WKZO-TV
Program Director
590 W. Maple St.
Kalamazoo, MI 49008

KCBJ-TV
Program Director
501 Business Loop 70 East
Columbia, MO 65201

KOLN-TV
Program Director
Box 30350
Lincoln, NE 68503

KETV
Program-Director
27th & Douglas Sts.
Omaha, NE 68131

WRAL-TV
Program Director 18
Box 1511
Raleigh, NC 27602

Program Director
3091 Euclid Ave.
Cleveland, OH 44115

KMTV
Program Director
10714 Mockingbird Dr.
Omaha, NE 68127

WRAL-TV
Program Director
Box 12000
Raleigh, NC 27605

WJKW-TV
Program Director
5500 S. Marginal Rd.
Cleveland, OH 44103

KRNE-WOWT
Program Director
3501 Farnam Street
Omaha, NE 68131

WECT
Program Director
322 Shipyard Blvd.
Wilmington, NC 28403

WKYC-TV
Program Director
1403 E. 6th St.
Cleveland, OH 44114

WBTW
Program Director
One Julian Price Pl.
Charlotte, NC 28208

WWAY
Program Director
Box 2088
Wilmington, NC 28402

WBNS-TV
Program Director
770 Twin Rivers Dr.
Columbus, OH 43216

WPCQ-TV
Program Director
Box 18665, Hood Rd
Charlotte, NC 28218

WXII
Program Director
Box 11847
Winston-Salem, NC 27116

WCMH-TV
Program Director
Box 4
Columbus, OH 43216

WSOC-TV
Program Director
Box 34665
Charlotte, NC 28234

KTHI-TV
Program Director
Box 1878
Fargo, ND 58107

WTVN-TV
Program Director
Box 718
1261 Dublin Rd.
Columbus, OH 43215

WFMY-TV
Program Director
Box TV2
Greensboro, NC 27420

KXJB-TV
Program Director
4302 13th Ave. S.
Fargo, ND 58103

WDTN
Program Director
4595 S. Dixie Ave.
Dayton, OH 45401

WCTI
Program Director
Box 2325
New Bern, NC 28580

WDAY-TV
Program Director
301 S. 8th St.
Box 2466
Fargo, ND 58107

WHIO-TV
Program Director
1414 Wilmington Ave.
Dayton, OH 45401

WTTN-TV
Program Director
Box 468
Washington, NC 27889

WCPO-TV
Program Director
500 Central Ave.
Cincinnati, OH 45202

WKEF
Program Director
1731 Soldiers Home Rd.
Dayton, OH 45418

WNCT-TV
Program Director
Box 898
Greenville, NC 27835-0898

WKRC-TV
Program Director
1906 Highland Ave.
Cincinnati, OH 45219

WTOV-TV
Program Director
320 Market St.
Steubenville, OH 43952

WGHP-TV
Program Director
Box 2688
High Point, NC 27261

WLWT
Program Director
140 W. Ninth St.
Cincinnati, OH 45202

WDHO-TV
Program Director
300 S. Byrne Rd.
Toledo, OH 43615

Program Director
730 N. Summit St.
Box 715
Toledo, OH 43695

Program Director 19-
Box 186
Charleston, SC 29482

Program Director
Box WKPT
Kinsport, TN 37862

WTVG
Program Director
4247 Dorr St.
Toledo, OH 43607

WIS-TV
Program Director
1111 Bull St.
Columbia, SC 29202

WATE-TV
Program Director
Box 2349
1306 N.E. Broadway
Knoxville, TN 37901

WFMJ-TV
Program Director
101 W. Boardman St.
Youngstown, OH 44503

WLOS-TV
Program Director
Box 2150
288 Macon Aven.
Asheville, NC 28802

WBIR-TV
Program Director
1513 Hutchison Ave.
Knoxville, TN 37917

WKBN-TV
Program Director
3930 Sunset Blvd.
Youngstown, OH 44501

WYFF-TV
Program Director
505 Rutherford St.
Greenville, SC 29609

WTVK
Program Director
Box 1388
Knoxville, TN 37901

WYTV
Program Director
3800 Shady Run Rd.
Youngstown, OH 44502

KDLT
Program Director
Box 1200
Mitchell, SD 57301

WMBQ-TV
Program Director
485 S. Highland Ave.
Memphis, TN 38111

KOCO-TV
Program Director
Box 14555
Oklahoma City, OK 73113

KELO-TV
Program Director
Phillips at 13th
Sioux Falls, SD 57102

WMC-TV
Program Director
1950 Union Ave.
Memphis, TN 38104

KWTV
Program Director
Box 14159
Oklahoma City, OK 73113

KSPY-TV
Program Director
300 N. Dakota
Suite 13
Sioux Falls, SD 57102

WREG-TV
Program Director
Chanel 3 Dr.
Memphis, TN 38103

KJRH
Program Director
3701 S. Peoria
Tulsa, OK 75105

WDEF-TV
Program Director
3300 Broad St.
Chattanooga, TN 37408

WSMV
Program Director
Box 4
Nashville, TN 37202

KOTV
Program Director
302 S. Frankfort
Tulsa, OK 74120

WRCB-TV
Program Director
900 Whitehall Rd.
Chattanooga, TN 37405

WTVF
Program Director
474 James Robertson Pkwy.
Nashville, TN 37219

KTUL-TV
Program Director
Box 8
Tulsa, OK 74101

WTVC
Program Director
Box 1150
Chattanooga, TN 37401

WZTV
Program Director
Box 90764
Nashville, TN 37209

WCBD-TV
Program Director
Box 879
Charleston, SC 29402

WJHL-TV
Program Director
Box 1130
Johnson City, TN 37801

KAMR-TV
Program Director
Box 751
Amarillo, TX 79189

ARCA-TV
Program Director
Box 1400
Amarillo, TX 79189

ARND-TV
Program Director 20
Box 2222
Houston, TX 77001

.....
Program Director
1181 E. Mason St.
Box 1128
Green Bay, WI 54305

KVII-TV
Program Director
Box 13000
Amarillo, TX 79101

KRIV-TV
Program Director
Box 22810
3935 Westheimer Rd.
Houston, TX 77227

WLUK-TV
Program Director
Box 7711
Green Bay, WI 54303

KTBC-TV
Program Director
Box 2223
Austin, TX 78767

KTRK-TV
Program Director
Box 13
Houston, TX 77001

WKBT
Program Director
141 S. 6th St.
La Crosse, WI 54601

KTVV
Program Director
Box 490
Austin, TX 78767

KAMC
Program Director
Box 2805
Lubbock, TX 79408

WISC-TV
Program Director
7025 Raymond Rd.
Madison, WI 53711

KVUE-TV
Program Director
Box 9927
Austin, TX 78766

KCBD-TV
Program Director
Box 2190
Lubbock, TX 79408

WKOW-TV
Program Director
Box 100
Madison, WI 53701

KDFW-TV
Program Director
400 N. Griffin
Dallas, TX 75202

KENS-TV
Program Director
Box TV5
San Antonio, TX 78299

WMTV
Program Director
615 Forward Dr.
Madison, WI 53711

WFAA-TV
Program Director
Communications Ctr.
Dallas, TX 75202

KMOL-TV
Program Director
Box 2641
San Antonio, TX 78299

WISN-TV
Program Director
Box 402
Milwaukee, WI 53201

KDBC-TV
Program Director
Box 1799
El Paso, TX 79999

KSAT-TV
Program Director
Box 2478
San Antonio, TX 78298

WITI-TV
Program Director
Box 17800
8001 N. Green Bay Rd.
Milwaukee, WI 53217

KVIA-TV
Program Director
4140 Rio Bravo
El Paso, TX 79902

KAUZ-TV
Program Director
Box 2130
Wichita Falls, TX 76307

WTMJ-TV
Program Director
720 E. Capitol Dr.
Milwaukee, WI 53201

KXAS-TV
Program Director
Box 1780
Fort Worth, TX 76101

KFDX-TV
Program Director
Box 4000
Wichita Falls, TX 76308

WAOW-TV
Program Director
1908 Grand Ave.
Wausau, WI 54401

KHOU-TV
Program Director
1945 Allen Parkway
Houston, TX 77019

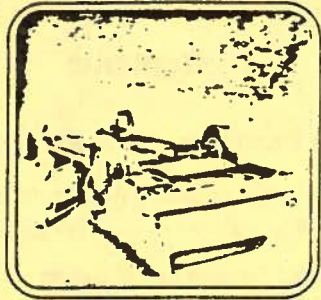
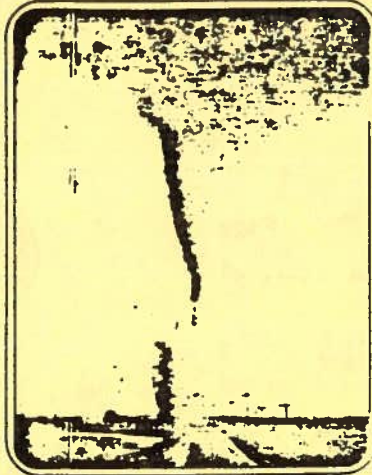
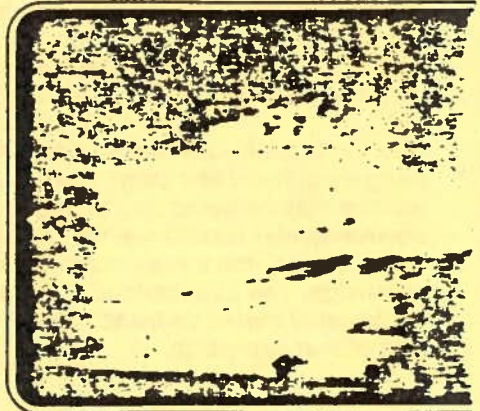
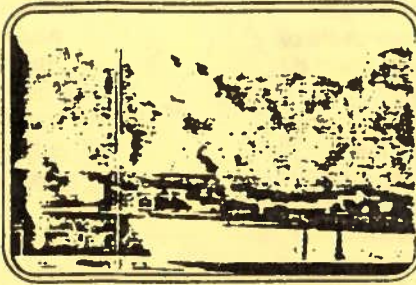
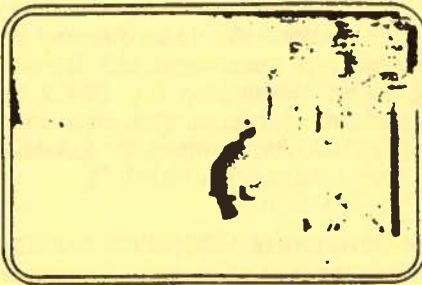
WBAY-TV
Program Director
115 S. Jefferson
Green Bay, WI 54301

WSAW-TV
Program Director
1114 Grand Ave.
Wausau, WI 54401

NATIONAL WEATHER SERVICE

Catalog of **Weather** and **Flood Hazard** Awareness Material

*correct
p. 4-11*



NOAA/PA 85007

National Oceanic and Atmospheric Administration
U.S. DEPARTMENT OF COMMERCE



Hazard awareness to promote disaster preparedness is a major concern of the Commerce Department's National Oceanic and Atmospheric Administration and its largest component, the National Weather Service.

The National Weather Service is well known for its reports of the Nation's weather, its forecasts, and its warnings against tornadoes, hurricanes, floods, and other atmospheric and hydrologic hazards. But forecasts and warnings are useless if they go unheeded or if those who hear them do not know how to respond to them.

In order to help Americans understand the dangers of flood and storm and what lifesaving actions may be necessary during these hazardous environmental conditions, the National Weather Service conducts a year-round hazard awareness campaign. The publications, films, and other audiovisual materials listed in this catalog are part of that campaign.

Contents

	Page
Obtaining Brochures, Films and Slides	1
Thunderstorm/Lightning Publications and Slides	3
Tornado and Severe Local Storm Publications, Films and Slides/Spotter and Skywarn Publications	4
Flash Flood/Flood Publications, Films and Slides	7
Hurricane Publications, Films and Slides	9
Winter Storm Publications, Films and Slides ..	11
Miscellaneous Publications (Tsunami, Dust Storm, Heat Stress)	13

A2



HAZARD AWARENESS PUBLICATIONS

WHERE TO GET THEM ...

The publications listed here are available at a nominal cost from the U.S. Government Printing Office (GPO). Inquiries as to the availability and price of publications should be directed to Superintendent of Documents, U.S. Government Printing Office, Washington, D.C. 20402. (When inquiring about a particular title, also include the adjacent "NOAA/PA" number, for example, "Winter Storm (NOAA/PA 79018).")

Prices of Government publications are subject to change. Increases in costs make it necessary for the Superintendent of Documents to increase the selling prices of many publications offered. As it is not feasible for the Superintendent of Documents to correct the prices manually in all of the publications stocked, the prices charged on your order may differ from the prices printed in the publications.

FILMS

The films are available on loan without charge (except for return postage) from Modern Talking Pictures, Film Scheduling Center, 5000 Park Street North, St. Petersburg, Florida, 33709 (telephone: (813) 541-5763). Information regarding long term loan, television use, and cooperation with industry in producing motion pictures may be obtained from the same address. Loan requests should be made from 3 to 6 months before showing date. Loans are limited to 1 week—exclusive of mailing time. No films will be booked in December due to the heavy volume of holiday mail.

A3 REVERSE



100% Reverse

Films may be purchased from the Order Section, National Audiovisual Center, General Services Administration, Washington, D.C., 20409 (telephone: (301) 763-1896). Contact the Center for current information on the availability and price of a particular motion picture.

TORNADO, A SPOTTERS GUIDE, and **TORNADO AT PLEASANT HILL** are available from NOAA Office of Public Affairs, Room H6013, U.S. Department of Commerce, Washington, D.C. 20230 (telephones: (202) 377-8090). **A LADY NAMED CAMILE, WINTER STORMS**, and **DAY OF THE KILLER TORNADOES** are available from the Army Training and Audio Visual Support Centers located in each of the United States. **SURVIVAL IN THE COLD** is available from the American Red Cross Headquarters, Washington, DC, 20016.

SLIDE LECTURES

WHERE TO GET THEM ...

The slide lectures (except where noted) are for sale by the Order Section, National Audiovisual Center, General Services Administration, Washington, D.C., 20409 (telephone: (301) 763-1896). Contact the Center for current information on the availability and price of a particular slide lecture.

All slides are 2 by 2 color with written narrative or cassette tape.

Information regarding NOAA/NWS hazard awareness publications and audiovisuals can be obtained from the National Weather Service's Disaster Preparedness Staff (W/OM11x1), Attn: Dick Wood, 8060 13th Street, Silver Spring, Maryland, 20910 (telephone: (301) 427-8090).

THUNDERSTORM/LIGHTNING PUBLICATIONS

OWLIE'S TIPS ON LIGHTNING SAFETY (NOAA/PA 76017)

A 10½ by 16-inch poster highlighting safety with cartoons, primarily for children, but can be used anywhere.

LIGHTNING TIPS (NOAA/PA 76018)

A two-color, wallet size card on lightning safety including dangers to avoid and first aid for those struck by lightning.

OWLIE SKYWARN'S LIGHTNING BOOK (NOAA/PA 77023)

A two-color, 16-page booklet for boys and girls, detailing what happens during the storm and what precautions to take.

THUNDERSTORMS AND LIGHTNING (NOAA/PA 83001)

A two-color, 6-page pamphlet explains the causes, life cycles, destructive offspring, and incidence of thunderstorms. Lightning formation and effects are described and safety rules are included along with information on tornadoes, hail, flash floods, and downbursts. Statistics, including lightning deaths by states from 1959 through 1984, are given.

THUNDERSTORM (LIGHTNING) SLIDE LECTURES

WHEN LIGHTNING STRIKES: 65 slides.

Commentary

Effective presentation of lightning formation and possible lethal result of lightning strike. Safety measures and victim techniques are suggested.

A4 REVERSE

100% Reverse



A5 REVERSE

TORNADO PUBLICATIONS

TORNADO SAFETY—SURVIVING NATURE'S MOST VIOLENT STORMS (WITH STATISTICS FOR 1955-84) (NOAA/PA 82001)

A two-color, 8-page brochure describing the phenomenon of tornadoes, their destructive effects, NOAA's work of warning, and safety rules for the individual and community.

TIPS FOR TORNADO SAFETY (NOAA/PA 76016)

A two-color, four panel wallet card containing safety rules and describing the watch and warning terms used by the National Weather Service. (Spanish language—NOAA/PA 85005)

TORNADO SAFETY IN RESIDENCES (NOAA/PA 79016)

A unique 4-page brochure depicting, with pictures and captions, proper safety measures which should be taken during threat of tornado. Appropriate for children or adults.

IN YOUR KEEPING (NOAA/PA 70015)

A two-color, 6-panel brochure designed for the administrators of schools, hospitals and other institutions outlining severe storm safety precautions.

TORNADO SAFETY RULES IN SCHOOLS (NOAA/PA 74025)

A two-color, 4-panel folder/poster designed to alert and assist schools develop tornado preparedness plans. The poster provides instructions, signals, and responses during tornado drills.

TORNADO, DO YOU KNOW WHAT TO DO? (NOAA/PA 75015)

A black and white poster designed for posting on school bulletin boards with space for instructions on actions to be taken during a tornado drill. Although designed as a school poster, it can be used by other institutions, factories, office buildings, etc.

OWLIE SKYWARN'S TORNADO WARNING (NOAA/PA 75012)

A two-color, 16-page booklet for boys and girls. This booklet is designed for use at about the fifth grade level. The cartoon character, "Owlie Skywarn," describes the tornado, its destructive effects, and what safety rules children and others should follow.

SKYWARN, SECONDS SAVE LIVES (NOAA/PA 70010)

A two-color, 3-page promotional leaflet describing the SKYWARN Spotter Program and asking for volunteers.

SPOTTER'S GUIDE FOR IDENTIFYING AND REPORTING SEVERE LOCAL STORMS (NOAA/PA 81011)

A two-color, 16-page booklet describing sky conditions in various severe storm and tornado situations and how to report severe local storms to the National Weather Service. (For official use only.)

SEVERE LOCAL STORM SPOTTER REPORTING PROCEDURES POSTER (NOAA/PA 70012)

Detailed instructions for storm spotter reporting during severe weather.

SKYWARN POSTER (NOAA/PA 76019)

This two-color poster stresses the importance of immediate, positive action when a tornado threatens.

TORNADO EMERGENCY, EFFECTIVE PROCEDURES FOR ALL BROADCAST STATIONS (NOAA/PA 78021)

A 3-page brochure specifically designating broadcast language for the public during tornado threats.

SKYWARN SPOTTER (NOAA/PA 84001)

A two-color wallet card with space for official spotter's name, code number, emergency telephone numbers, etc. Information on what to report and diagrams on severe weather situations are included. (For official use only.)

TORNADO SAFETY RULES POSTER (Poster 923)

A poster co-produced by NOAA, the Federal Emergency Management Agency, and the American Red Cross, this publication provides short, easily understood safety rules to follow when a tornado threatens.

4
A6 REVERSE

5
A7 REVERSE

2 Reverse



TORNADO FILMS

DAY OF THE KILLER TORNADOES: 15 minutes
Dramatic footage of tornadoes that hit 11 states, killed 307 persons, April 3 and 4, 1974. Illustrates how warnings, preparedness planning, and coordination of Emergency Operating Centers helped save lives.

TORNADO AT PLEASANT HILL: 5 minutes
A documentary of the May 4, 1977, tornado that struck the high school in Pleasant Hill, Missouri, while classes were in session. Includes actions taken that resulted from previous tornado drills and student comments.

TORNADO: A SPOTTER'S GUIDE: 15½ minutes
Developed for use in training tornado spotters. Details the many visual facets of tornadoes and their look-alikes.

TERRIBLE TUESDAY: 23 minutes
The scene is Wichita Falls, Texas, where survivors of one of history's worst tornado outbreaks tell their stories. The theme: proper safety precautions can minimize the danger from nature's most violent storms.

TORNADO SLIDE LECTURES

TORNADO PREPAREDNESS: 67 slides.
Commentary.
Shows the occurrence and effects of tornadoes, the warning and communications systems used, National Weather Service watch and warning terminology, tornado shelters, and safety rules.

TORNADO SAFETY IN RESIDENCE: 130 slides.
33-minute cassette tape. Commentary.
Depicts effects of tornadoes on residences from winds, missile damage, and building displacement. Locates safest areas in permanent residences.

THE SAFEST PLACE IN SCHOOLS: 140 slides.
Shows the destructive effects of tornadoes and the most dangerous and safest areas in schools. Material applies to other buildings of similar design to schools.

A LOOK AT THE TORNADO AND OTHER LOCAL STORMS: 63 slides. Commentary.
A non-technical look at the tornado and thunderstorms, designed primarily for schools, service clubs, and general public.

FLASH FLOOD/FLOOD PUBLICATIONS

FLASH FLOODS (NOAA/PA 77014)
A two-color, 4-panel wallet card containing safety rules and describing the watch and warning terms used by the National Weather Service.

A8
REVERSE

A9
REVERSE



100% Reverse

AVENIDAS REPENTINAS (NOAA/PA 77015)
Spanish version of 77014

FLASH FLOOD (NOAA/PA 73018)
A two-color, 6-panel leaflet describes flash floods, lists safety rules for flash flood watches and warnings.

AVENIDAS REPENTINAS (NOAA/PA 74022)
Spanish version of 73018

FLOODS, FLASH FLOODS AND WARNINGS (NOAA/PA 81010)
A 6-panel pamphlet describing the hydrologic services of the National Weather Service, warning procedures for floods and flash floods, needed community response, and flood safety rules.

KILLER FROM THE HILLS POSTER (NOAA/PA 73019)
A two-color, 9 by 12-inch poster which gives flash flood safety rules for campers in hilly country.

UN ASESINO QUE BAJA DE LOS CERROS (NOAA/PA 74021)
Spanish version of 73019

OWLIE SKYWARN ON FLASH FLOODS POSTER (NOAA/PA 77016)
A 9 by 14-inch poster highlighting flash flood safety with cartoons. Primarily for children and display in flash flood prone areas.

NWS/AMERICAN RED CROSS/FEMA FLASH FLOOD/FLOODS POSTER 921
A 11 by 14-inch poster of flash flood safety rules on one side and flood safety rules on other side. What to do before, during, and after flash flood and floods. Can be displayed side-by-side for areas with both flash flood and flood problems.

FLASH FLOOD/FLOOD FILMS

FLASH FLOOD: 14 minutes
Stresses safety measures for campers in recreation areas. Shows volunteer spotters reporting procedures.

FLOOD: 15 minutes
Describes the manner in which flood precautions are taken, portrays the basic precautions against the dangers and hardships imposed by floods; shows the development and impact of floods caused by seasonal snowmelt, hurricanes, heavy rainstorms, and concludes with a description of the deadly flash flood.

FLASH FLOOD/FLOOD SLIDE LECTURES

FLASH FLOODS: MYTHS OR REALITIES: 79 slides. Taped commentary. Shows reactions to specific flooding situations. Explains why certain actions should not be taken. Uses multiple choice questions and answers.

FLASH FLOOD PREPAREDNESS: 80 slides. Not for sale. Set is accompanied by printed commentary and cassette tape describing the available warning systems and the needs for local preparedness planning.

HURRICANE PUBLICATIONS

SOME DEVASTATING NORTH ATLANTIC HURRICANES OF THE 20TH CENTURY (NOAA/PA 77019)
A 14-page booklet listing major North Atlantic hurricanes including information regarding casualties and damage areas affected.

8

AIO
REVERSEAII
REVERSE

9

100% Reverse



STORM SURGE AND HURRICANE SAFETY WITH TRACKING CHART (NOAA/PA 78019)

Describes all components of hurricane development, defines NWS terms, stresses safety precautions, and has instructions and chart for hurricane tracking in Atlantic, Caribbean, and Gulf of Mexico.

HAWAIIAN HURRICANES AND SAFETY MEASURES WITH CENTRAL PACIFIC TRACKING CHART (NOAA/PA 85002)

Same as publication above, but tailored for use on the Hawaiian islands and surrounding areas.

HURRICANE TRACKING CHART (ATLANTIC) (NOAA/PA 77020)

A single page hurricane tracking chart with safety tips to follow during hurricane watches and warnings.

HURRICANE TRACKING CHART (PACIFIC) (NOAA/PA 77021)

A single page foldout hurricane tracking chart with safety tips to follow during hurricane watches and warnings.

OWLIE SKYWARN'S HURRICANE WARNINGS (NOAA/PA 77001)

A two-color, 16-page booklet for boys and girls. The booklet is designed for use at about the fifth grade. The cartoon character, "Owlie Skywarn," describes the hurricane, its destructive effects, and the safety rules children and others should follow.

SURVIVAL IN A HURRICANE (NOAA/PA 70027)

A two-color, 4-panel wallet card describing safety rules for hurricane survival. (Spanish language—NOAA/PA 85006)

HURRICANE/STORM SURGE POSTER (Publication #922)

A poster co-produced by NOAA, the Federal Emergency Management Agency, and the American Red Cross, this publication provides short, easily understood safety rules to follow when a hurricane threatens. Hurricane safety is featured on one side of the poster, storm surge safety on the other.

HURRICANE FILMS

A LADY NAMED CAMILLE: 14 minutes
Depicts how ignoring hurricane warnings can cost lives. Shows impact devastation. Details civil defense warning procedures. DCPA film.

HURRICANE DECISION: 14 minutes
Lifesaving information for persons in hurricane-prone areas. Explains dangers of storm surge, wind, and inland flooding from hurricanes.

HURRICANE: 28½ minutes
Tracks an actual hurricane from its tame beginnings in the Gulf of Mexico to its violent and deadly landfall. Survivors' stories provide lessons in safety.

HURRICANE SLIDE LECTURES

HURRICANE ELOISE: 43 slides. Commentary.
Explains ramifications of hurricane awareness/preparedness or lack of it. Details lessons learned from previous hurricanes.

HURRICANE PREPAREDNESS: 49 slides.
Commentary.
Shows how hurricanes are tracked. Details importance of community communication during weather threat and aftermath of impact.

HURRICANE ALICIA: 84 slides. Commentary.
Discusses the meteorological ramifications and structural damage from 1983's Hurricane Alicia.

WINTER STORMS PUBLICATIONS

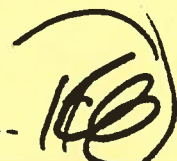
WINTER STORMS (NOAA/PA 79018)
A two-color, 8-page pamphlet describing the causes and dangers of winter storms, the terms used in the National Weather Service watches and warnings, and winter storm safety rules.

ALL REVERSE

AAB REVERSE



100% Reverse





RIDING OUT WINTER STORMS (NOAA/PA 80003)

A two-color, 4-panel wallet card listing winter storm safety rules and defining winter weather warning terms used by the Weather Service. Card includes a wind chill chart.

OWLIE SKYWARN ON WINTER STORMS POSTER (NOAA/PA 77017)

A 10½ by 16-inch poster highlighting winter storm safety with cartoons. Designed primarily for children but can be used by anyone.

WINTER STORMS POSTER (NOAA/PA 78022)

A two-color poster defining winter storm terms and suggesting safety measures.

WINTER STORM FILMS

SURVIVAL IN THE COLD: 16 minutes
Describes do's and don't's for severe winter weather conditions.

WINTER STORMS: 28 minutes
A documentary film report on the disastrous winter of 1978, ranging from the great New England and Midwestern blizzards to the floods and mudslides of California, plus the unexpected wave of icestorms and floods that swept the South and other sections of the country.

WINTER STORM SLIDE LECTURE

WINTER STORMS, THE DECEPTIVE KILLERS:
80 slides. Cassette tape and commentary.
Gives definitions and impacts of all types of winter storms. Also describes watches and warnings and gives safety tips for a wide variety of circumstances.

12

A14
REVERSE

TSUNAMI PUBLICATION

TSUNAMI WATCH AND WARNING (NOAA/PA 74301)

A two-color, six-panel folder containing a description of tsunami watches, warnings, and safety rules to follow. (Updating of the publication is now in progress.)

DUST STORM PUBLICATION

DUST STORM (NOAA/PA 82002)

A two-color, 4-panel wallet card listing dust safety rules and defining dust storm warning terms.

HEAT STRESS PUBLICATION

HEAT WAVE A MAJOR SUMMER KILLER (NOAA/PA 85001)

A two-color brochure describing how too much heat affects the body. Hot weather safety tips are included as well as first aid for those stricken by heat. A temperature-humidity "Heat Index" chart is given.

WEATHER SAFETY PUBLICATION

WATCH OUT STORMS AHEAD: OWLIE SKYWARN'S WEATHER BOOK (NOAA/PA 82004)

This 28-page brochure, designed for elementary school use, features a cartoon owl who presents simple safety rules for children to follow during hurricanes, tornadoes, lightning, flash floods, and winter storms. (Restricted distribution. School officials only contact Richard A. Wood, W/OM11x1, National Weather Service, Silver Spring, MD, 20910.)

A15
REVERSE



Program Director
201 West Third St
Little Rock, AR 72203

Program Director 15
1611 W. Peachtree St., NE
Atlanta, GA 30309

Program Director
180 N. State Street
Chicago, IL 60601

KATV
Program Director
401 Main
Box 77
Little Rock, AR 72203

WAGT
Program Director
Box 1526
Augusta, GA 30903

WMAQ-TV
Program Director
Merchandise Mart
Chicago, IL 60654

KTHV
Program Director
Box 269
Little Rock, AR 72203

WJBF
Program Director
10th & Reynolds St.
Box 1404
Augusta, GA 30901

WAND
Program Director
804 Southside Dr.
Decatur, IL 62521

KBTU
Program Director
1089 Bannock St.
Denver, CO 80204

WRDW-TV
Program Director
Drawer 1212
Augusta, GA 30903

WQAD-TV
Program Director
3003 Park 16th St.
Moline, IL 61265

KCNC-TV
Program Director
1044 Lincoln St.
Denver, CO 80203

WRBL
Program Director
Box 270
Columbus, GA 31994-5999

WEEK-TV
Program Director
2907 Springfield Rd.
Peori, IL 61611

KMGH-TV
Program Director
123 Spear Blvd.
Denver, CO 80217

WMAZ-TV
Program Director
Box 5008
Macon, GA 31213

WRAU-TV
Program Director
500 N. Stewart St.
Creve Coeur, IL 61611

WJKS-TV
Program Director
Box 17000
Jacksonville, FL 32216

WJCL
Program Director
Box 13646
Savannah, GA 31406

WIFR-TV
Program Director
2523 N. Meridian Rd.
Rockford, IL 61103

WCTV
Program Director
Box 3048
Tallahassee, FL 32315

WCIA
Program Director
509 S. Neil
Champaign, IL 61820

WTVO
Program Director
1917 N. Meridian Rd.
Rockford, IL 61105

WECA
Program Director
Box 13899
Tallahassee, FL 32317

WICD
Program Director
250 County Fair Dr.
Champaign, IL 61821

WICS
Program Director
2680 E. Cook St.
Springfield, IL 62703

WAGA-TV
Program Director
Box 4207
Atlanta, GA 30302

WBBM-TV
Program Director
630 N. McClung Court
Chicago, IL 60611

WEHT
Program Director
Box 25
Evansville, IN 47701

WSB-TV
Program Director
1601 W. Peachtree St., NE
Atlanta, GA 30309

WFLD-TV
Program Director
300 N. State Street
Chicago, IL 60610

WFIE-TV
Program Director
1115 Mt. Auburn Rd.
Evansville, IN 47712

WTVW
Program Director
477 Carpenter St.
Box 7
Evansville, IN 47701

WTVW
Program Director 16
Box 299
Terre Haute, IN 47808

Program Director
Box 1457
Lexington, KY 40591

WKJG-TV
Program Director
2633 W. State Blvd.
Fort Wayne, IN 46808

KCRG-TV
Program Director
Box 818
Second Ave. at 5th St. S.E.
Cedar Rapids, IA 52401

WTVQ-TV
Program Director
Box 5590
2940 Bryant Rd.
Lexington, KY 40555

WPTA
Program Director
3401 Butler Rd.
Fort Wayne, IN 46801

KGAN-TV
Program Director
Box 3131
Cedar Rapids, IA 52406

WAVE-TV
Program Director
725 S. Floyd St.
Louisville, KY 40230

WISH-TV
Program Director
1950 N. Meridian St.
Indianapolis, IN 46207

KWWL
Program Director
500 E. 4th
Waterloo, IA 50703

WHAS-TV
Program Director
Box 1084
Louisville, KY 40201

WRTV
Program Director
1330 N. Meridian St.
Indianapolis, IN 46206

WOC-TV
Program Director
805 Brady St.
Davenport, IA 52808

WAFB-TV
Program Director
Box 2671
Baton Rouge, LA 70821

WTHR
Program Director
1000 N. Meridian St.
Indianapolis, IN 46204

KCCI-TV
Program Director
Box 10305 9th & Pleasant
Des Moines, IA 50306

WBRZ
Program Director
Box 2906
Baton Rouge, LA 70821

WNDU-TV
Program Director
Box 1616
South Bend, IN 46634

WHO-TV
Program Director
1801 Grand Ave.
Des Moines, IA 50308

WRST
Program Director
Essen Lane
Box 14685
Baton Rouge, LA 70808

WSBT-TV
Program Director
300 W. Jefferson Blvd.
South Bend, IN 46601

KAKE-TV
Program Director
Box 10
Wichita, KS 67201

KATC
Program Director
Box 3347
Lafayette, LA 70502

WSJV
Program Director
Box 1846
Elkhart, IN 46515

KSNW
Program Director
Box 333
833 N. Main
Wichita, KS 67201

KLFY-TV
Program Director
Box 90665
Lafayette, LA 70509

WBAK-TV
Program Director
Box 719
Terre Haute, IN 47808

KWCH-TV
Program Director
Box 12
Wichita, KS 67201

KNOE-TV
Program Director
Box 4067
Monroe, LA 71201

WTHI-TV
Program Director
918 Ohio St.
Terre Haute, IN 47808

WKYT-TV
Program Director
Box 5037
Lexington, KY 40505

WDSU-TV
Program Director
520 Royal St.
New Orleans, LA 70130