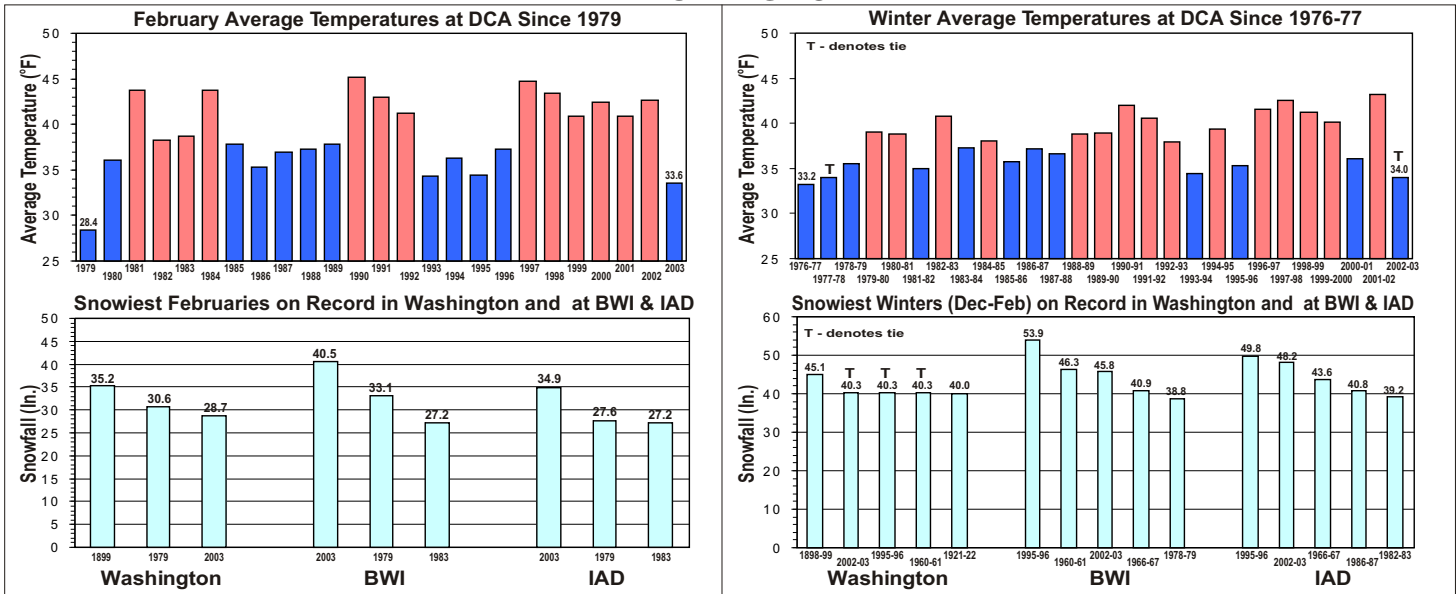




**PRECIPITATION SUMMARY AND TEMPERATURE OBSERVATIONS
FOR THE WASHINGTON, DC & BALTIMORE, MD AREA**

FEBRUARY 2003 & WINTER REVIEW

**FEBRUARY: COLDEST, WETTEST AND SNOWIEST SINCE 1979 AT DCA
WINTER: SECOND SNOWIEST ON RECORD AND COLDEST SINCE 1976-77 IN
WASHINGTON**



HIGHLIGHTS

MONTHLY

- Subnormal temperatures and above-normal precipitation and snowfall across the Washington/Baltimore area;
- Coldest February since 1979 at all three major airports;
- 23 days with at or below-normal temperatures at DCA;
- 21 days with at or below freezing lows and 4 days with at or below freezing highs at DCA;
- Second wettest February on record at BWI, fourth at IAD, and 7th at DCA;
- Snowiest February on record at both BWI (40.5") and IAD (34.9");
- Third snowiest February (28.7") ever recorded and snowiest since 1979 in Washington;
- Largest snowstorm to hit Baltimore (28.2") and fifth largest in Washington (16.7") from the 15-18th;
- Daily record snowfall at DCA (13.3"), BWI (21.8") and IAD (15.9") on the 16th;
- 10 days with measurable snowfall, the most such days in any month since 1934 at DCA;
- Second largest daily February snowfall on record (on the 16th) at both BWI and IAD, fourth at DCA;
- Daily record rainfall at DCA (2.27"), BWI (2.30") and IAD 1.69") on the 22nd caused some localized flooding.

SEASONAL

- Colder, wetter and snowier than normal across the Washington/Baltimore area;
- 65 days (72%) with at or below-normal temperatures at DCA;
- Coldest winter (tied w/ 1977-78) since 1976-77 at DCA, since 1977-78 at both BWI (4th overall) and IAD (4th overall);
- 65 days with at or below freezing lows at DCA, the most since 1976-77;
- 12 days with at or below freezing highs at DCA;
- Second snowiest winter in Washington (40.3"; tied w/ 1995-96 and 1960-61) and at IAD (48.2"), third at BWI (45.8");
- First colder than normal January since 1996 at the three major airports and coldest since 1994 at all three locations;
- 24 January days with at or below-normal temperatures at DCA, including the last 21 days;
- Largest December snowfall (between 4 and 7 inches at most locations) in 20 years on the 5th.