

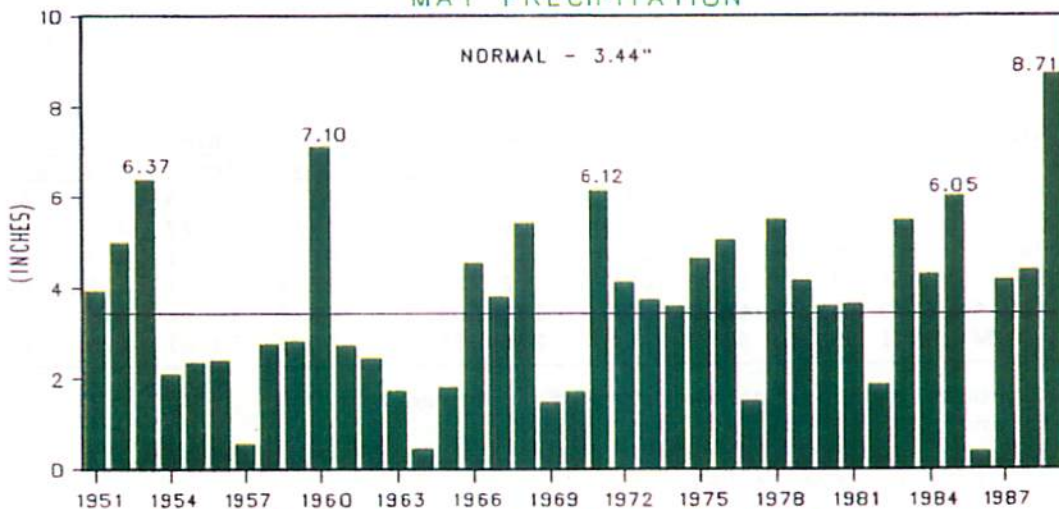
# PRESTO

**PRECIPITATION SUMMARY AND TEMPERATURE OBSERVATIONS  
FOR THE WASHINGTON, DC & BALTIMORE, MD AREA**

## MAY 1989 & SPRING REVIEW

**WETTEST MAY EVER AT BWI (8.71") & FT. BELVOIR (10.02") ...**

BALTIMORE WASHINGTON AIRPORT (BWI)  
MAY PRECIPITATION

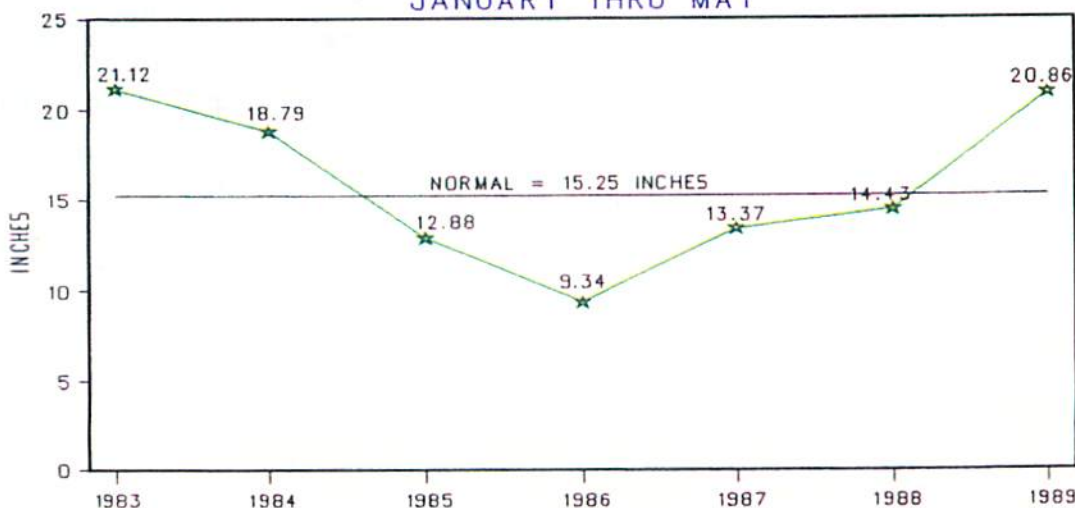


... WHILE ANDREWS, DULLES, AND NATIONAL RECORDED THEIR SECOND, THIRD, AND FIFTH WETTEST MAY, RESPECTIVELY.

13 CONSECUTIVE DAYS (MAY 5 - 17) OF RAINFALL (RANGING FROM A TRACE UP TO 2.10") AT DCA WAS THE LONGEST SUCH STREAK SINCE 1968 (MAY 21 - JUNE 3) WHEN 14 STRAIGHT DAYS HAD RAIN.

## WETTEST START TO A YEAR AT DCA SINCE 1983

WASHINGTON NATIONAL AIRPORT (DCA)  
JANUARY THRU MAY



Andrew H. Horvitz, 763-8111  
Satellite Data Services Division, NCDC/NESDIS/NOAA

David Miskus, 763-8071  
Climate Analysis Center, NMC/NWS/NOAA

