



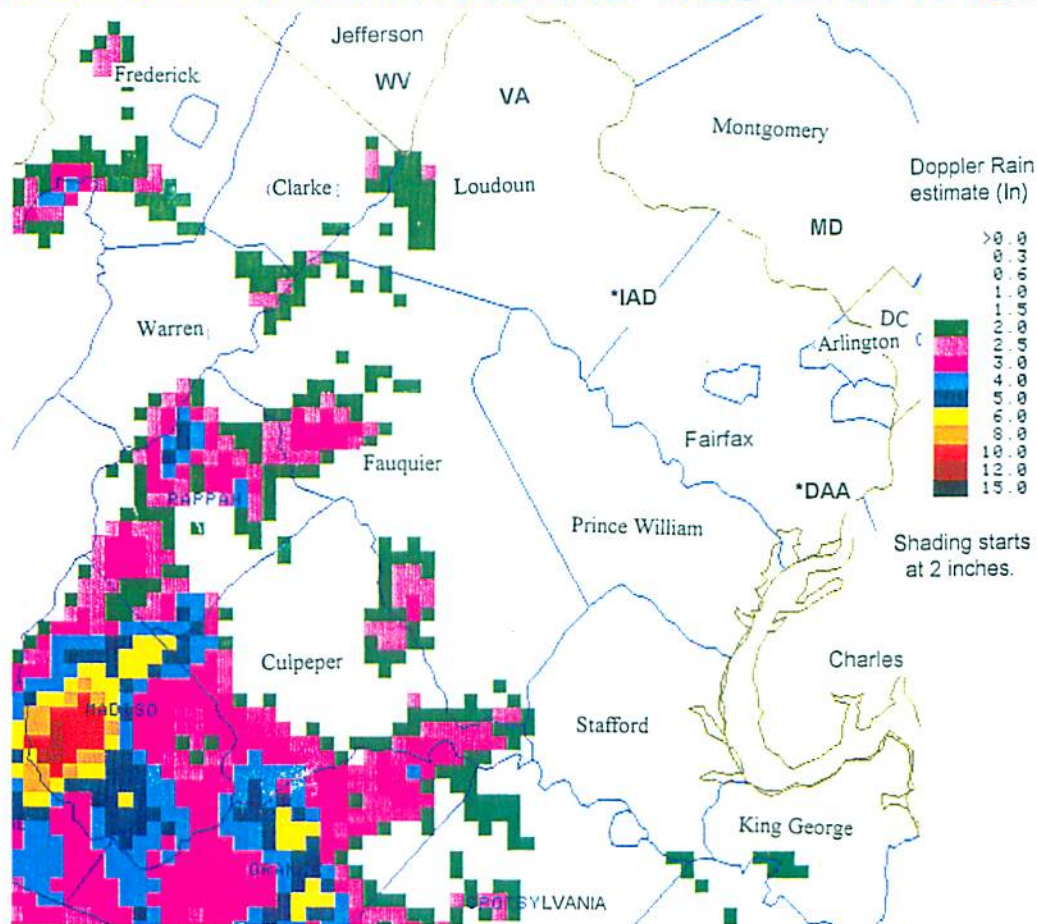
# PRESTO



PRECIPITATION SUMMARY AND TEMPERATURE OBSERVATIONS  
FOR THE WASHINGTON, DC & BALTIMORE, MD AREA

## JUNE 1995

### LOCAL REGION DRIER THAN NORMAL, BUT SEVERE FLOODING HITS CENTRAL AND WESTERN VIRGINIA



Cover Photo: NWS doppler weather surveillance radar (WSR-88D) storm total precipitation from June 21st-30th depicts heaviest rainfall in Madison County, VA, where as much as two feet was recorded.

### HIGHLIGHTS

- Worst flooding in decades in Shenandoah and central Virginia. Eight killed, \$125M in property damage, with eight counties declared federal disaster areas. Up to two feet of rain occurring over portions of Madison County as torrential rains fall during a ten day period (21st – 30th);
- In sharp contrast to western Virginia, below normal rainfall at all Metro airports;
- Ninth consecutive month with subnormal precipitation at BWI;
- Sixth consecutive drier than normal June at both DCA and BWI;
- Dramatic June temperature difference between 1994 (DCA avg., temp.: 79.4°F, dep. nml.: +3.8°F) and 1995 (DCA avg. temp.: 74.6°F; dep. nml.: -1.0°F) across the area;
- Only 5 days with highs at or above 90°F (17 in 1994 – tied June record) at DCA;
- More than six inches of rain recorded in portions of Prince George's County from heavy showers and thunderstorms on the 25th, resulting in some localized flooding.

Andrew H. Horvitz, Office of Meteorology/NWS, 713-1867

Joseph A. Harrison and Gail M. Andrews, Climate Analysis Center/NMC/NWS, 763-4670

(for more details turn over)