

# Late June and Early July Tornadoes

---

## Thonotosassa and Dade City Feel the Effects



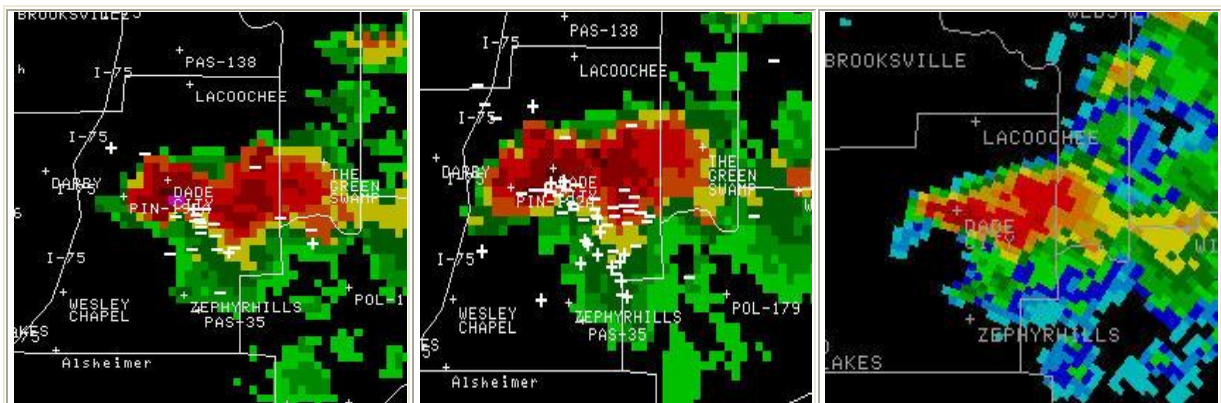
F-1 tornado near Lake Thonotosassa (Hillsborough County) during the evening of July 8th.

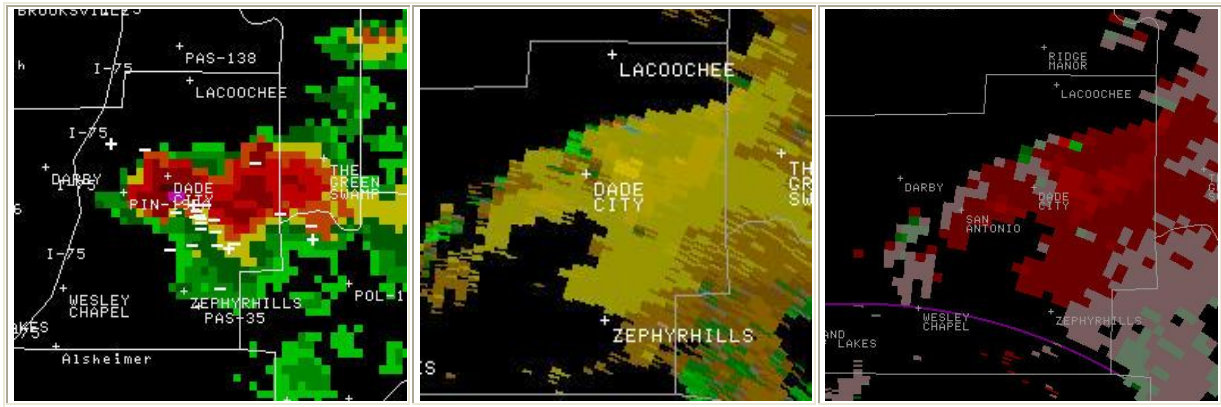
---

### June 29th: Quick-hitting tornado strikes Dade City at Supper Time

A fast developing rotating thunderstorm moved northward across eastern Pasco County, spawning a short-lived but damaging tornado in Dade City. Significant damage was confined to the south part of town, between Church Street and Palm Avenue, and included 14 fallen trees or large limbs, including several onto homes and at least one vehicle. Seven homes were structurally damaged, and several roads were briefly blocked by the debris. Power was knocked out to 2700 customers as the storm passed. Preliminary data suggest the touchdown was between 650 and 653 PM.

The table below shows several doppler radar images prior to and during the storm's passage.





Top Row (Left to Right): Doppler radar reflectivity images. Far left: Composite reflectivity, 640 PM EDT.

Middle:

Composite Reflectivity, 645 PM EDT. Right: Base reflectivity, 650 PM EDT. Tornado position likely just below the crosshair (+) denoting Dade City.

Bottom Row (Left to Right): Doppler radar velocity images. Far left: High resolution 0.5 degree base velocity, 645 PM EDT. Middle: High resolution 0.5 degree base velocity, 650 PM EDT.

Right: 0.5 degree storm relative velocity, 650 PM EDT.

### July 8th: Strong Summer Tornado Causes Damage near Lake Thonotosassa

Outflow boundaries from prior storms in eastern Manatee and southwestern Pasco counties collided over eastern Hillsborough County, and soon after a rotating thunderstorm formed near Thonotosassa just before 630 PM EDT. Minutes later, a slow moving tornado developed just east of Thonotosassa. The tornado, first spotted at 635 PM, was more than 100 yards wide at it's peak, and traveled 2.2 miles before dissipating at 647 PM.

The tornado started near the end of Collins Ranch road and traveled north across Thonotosassa road at the county park and boat ramp. the tornado then continued north into the southeast corner of Lake Thonotosassa, where it became stationary and "sucked up boat loads of water" according to one eyewitness. The tornado then came back onshore and headed north, just west of Hendry Ranch Road before dissipating a short time later.

Most of the damage from the tornado occurred at the end of Collins Ranch Road where several light structures were destroyed and trees were snapped off at the base and thrown. A nearby house only lost a few shingles. Boaters on Lake Thonotosassa were able to view the tornado near the eastern shore. Finally, a large piece of sod was stripped off the shore and was found floating in the lake.

The map below shows the path of the storm (south to north), in red.

