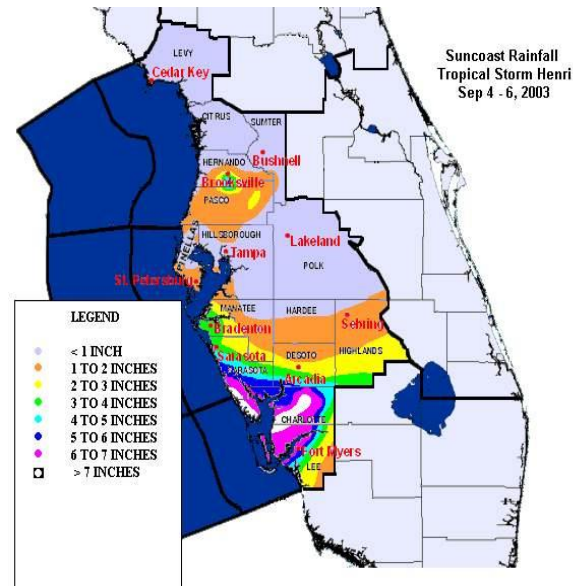
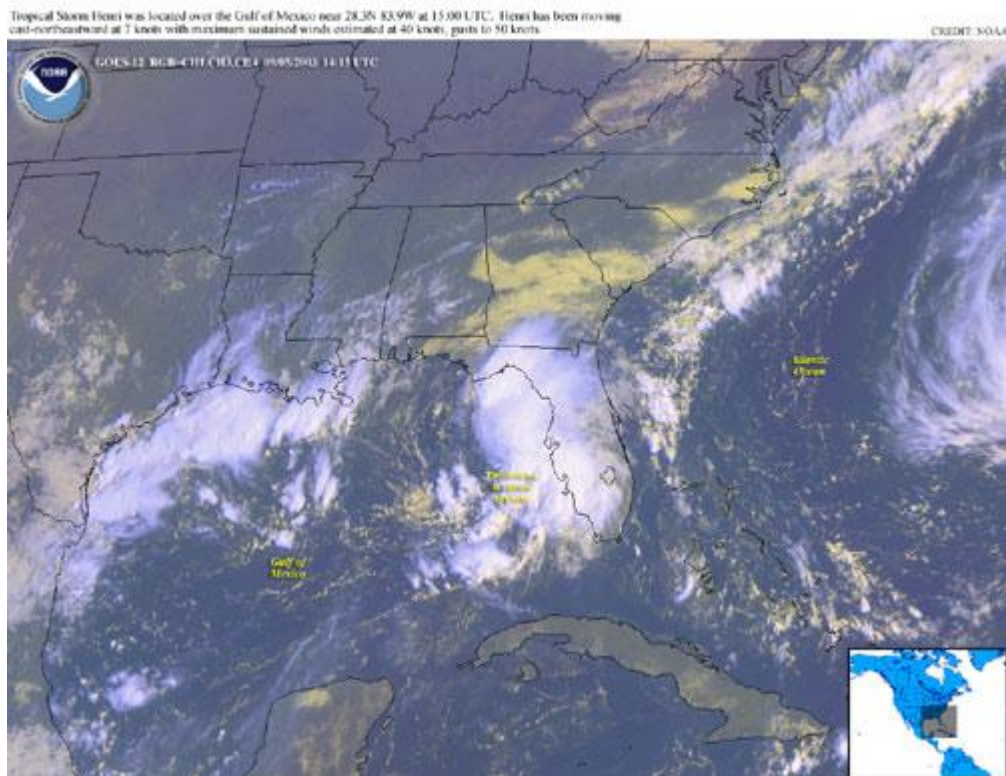


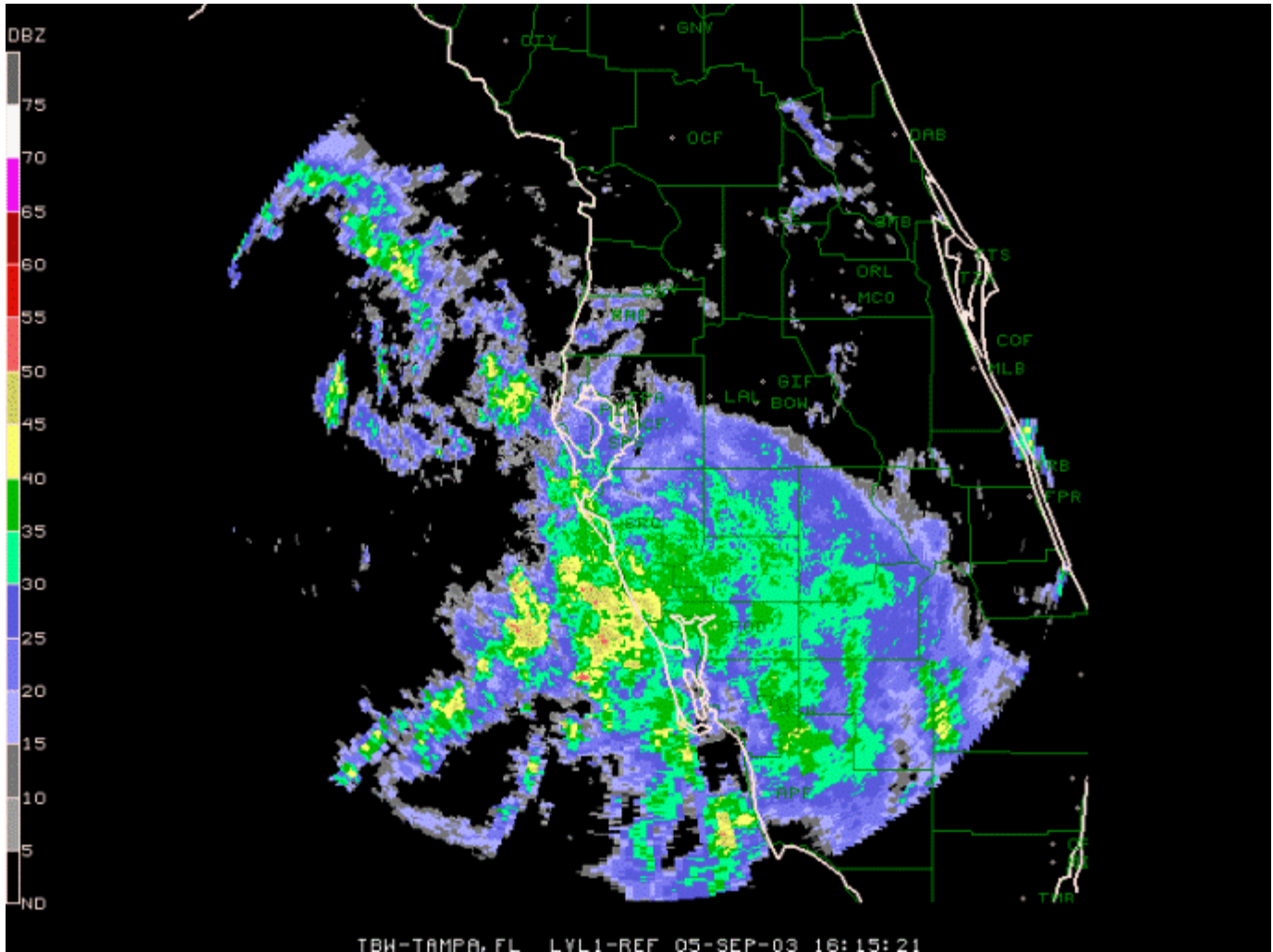
Tropical Storm Henri, September 5-6, 2003

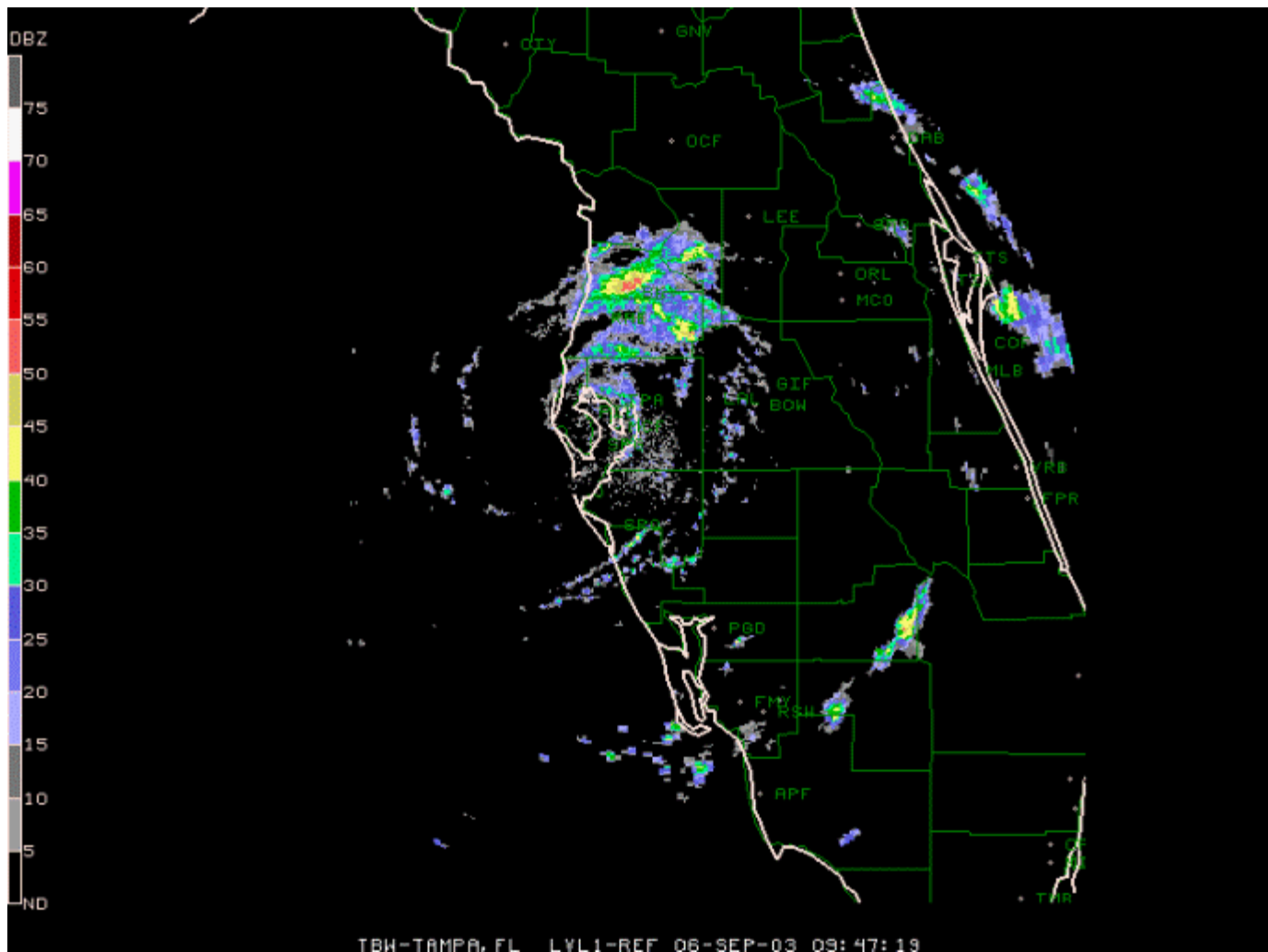
Dodging A Bullet



Suncoast rainfall for the period starting at 8 PM EDT September 4th and ending at 12 Noon EDT on September 6th.







At top: Infrared satellite photograph near Henri's peak intensity, 1415 UTC September 5. *Center:* Base reflectivity, 1615 UTC September 5. Note the solid area of moderate rains from Sarasota County southward. *At bottom:* Base reflectivity, 0947 UTC September 6. Note the circulation center in the Tampa Bay metropolitan area, with strong thunderstorm (yellow) near the Hernando/Pasco County line.

Short-lived Tropical Storm Henri lurked about 100 miles west of the Tampa Bay metropolitan area between 5 AM September 5th and 5 AM September 6th, then weakened before accelerating across central Florida during the late morning on the 6th. A poorly organized system, Henri produced generally minor freshwater flooding in two areas: From Sarasota through Lee Counties on the 5th and a very small portion of southern Hernando and extreme northern Pasco County before daybreak on the 6th.

Breezy conditions were experienced near the coast, but there were no recorded winds reaching tropical storm force (39 mph). A very brief period of tropical storm force winds was recorded in the eastern Gulf, 100 nautical miles west of Bayport (Hernando County). Sustained winds of 41 knots, with gusts to 52 knots, were measured near the center during the afternoon of the 5th. Surf and sea heights increased, but tides were generally only a foot or so above normal prior to landfall.

VISIT <http://www.srh.noaa.gov/tbw> FOR RAINFALL MAPS AND RADAR IMAGES OF TROPICAL STORM HENRI. THE DATA WILL BE POSTED THIS AFTERNOON.

A. WIND DATA...

...ASOS/AWOS (TWO MINUTE WIND OBSERVATIONS)...

COUNTY	CITY	DIR/SPEED (KTS)	DATE/TIME (UTC)
SUMTER	THE VILLAGES (VVG)	350/12	06/1805
HERNANDO	BROOKSVILLE (BKV)	060/15*	06/0843
PINELLAS	CLEARWATER (PIE)	110/16	06/0538
	ST PETERSBURG (SPG)	230/19	06/0856
HILLSBOROUGH	TAMPA (TPA)	280/19	06/0929
POLK	WINTER HAVEN (GIF)	200/19	06/1108
SARASOTA	SARASOTA (SRQ)	230/21	06/0809
CHARLOTTE	PUNTA GORDA (PGD)	280/20	06/1302
LEE	FORT MYERS PAGE (FMY)	270/20	06/1528
	SW FL INTL APT (RSW)	280/18	06/1817

...ASOS/AWOS (MAXIMUM GUST)...

SUMTER	THE VILLAGES (VVG)	N/A	
HERNANDO	BROOKSVILLE (BKV)	050/17*	06/0843
PINELLAS	CLEARWATER (PIE)	110/19	06/0538
	ST PETERSBURG (SPG)	230/25	06/0855
HILLSBOROUGH	TAMPA (TPA)	280/25	06/0929
POLK	WINTER HAVEN (GIF)	210/23	06/1107
SARASOTA	SARASOTA (SRQ)	250/25	06/0852
CHARLOTTE	PUNTA GORDA (PGD)	270/23	06/1653
LEE	FORT MYERS PAGE (FMY)	250/24	06/0622
	SW FL INTL APT (RSW)	290/25	06/1816

...BUOYS (ONE MINUTE OBSERVATIONS)...

42036	100 NM WNW OF BAYPORT	330/41	05/1700
42003	210 NM W OF CAPTIVA ISL	260/19	04/2300

...BUOYS (MAXIMUM GUSTS)...

42036	100 NM WNW OF BAYPORT	330/52	05/1700
42003	210 NM W OF CAPTIVA ISL	260/25	04/2300

...C-MAN (TWO MINUTE OBSERVATIONS)...

LEVY	CEDAR KEY (CDRF1)	070/14	06/0400
SARASOTA	VENICE (VENF1)	230/24	06/0900

...OTHER (ONE MINUTE OBSERVATIONS)...

HILLSBOROUGH	MACDILL AFB (MCF)	210/19	06/0959**
POLK	LAKELAND (LAL)	230/15	06/1153

...OTHER (MAXIMUM WIND GUSTS)...

LEVY	CEDAR KEY (CDRF1)	070/15	06/0400
HILLSBOROUGH	MACDILL AFB (MCF)	210/26	06/0959**
POLK	LAKELAND (LAL)	230/20	06/1153
SARASOTA	VENICE (VENF1)	230/26	06/0900

B. LOWEST SEA LEVEL PRESSURE...

COUNTY	CITY	PRES/MILLIBARS	DATE/TIME (UTC)
LEVY	CEDAR KEY (CDRF1)	1008.1	05/2200
SUMTER	THE VILLAGES (VVG)	1008.5	06/0845
HERNANDO	BROOKSVILLE (BKV)	1007.1	06/0858
PINELLAS	CLEARWATER (PIE)	1004.4#	06/0849

	ST PETERSBURG (SPG)	1005.4	06/0858
HILLSBOROUGH	TAMPA (TPA)	1005.1	06/0924
	MACDILL AFB (MCF)	1005.4	06/0959
POLK	WINTER HAVEN (GIF)	1007.8	06/1045
	LAKELAND (LAL)	1006.4	06/1050
SARASOTA	SARASOTA (SRQ)	1006.4	06/0656
	VENICE (VENF1)	1008.1	06/0800
CHARLOTTE	PUNTA GORDA (PGD)	1009.5	06/0746
LEE	FORT MYERS (FMY)	1009.5	06/0828
	SW FL INTL APT (RSW)	1009.1	06/0720
42036 (BUOY)	100NM WNW OF BAYPORT	1001.7	05/1800
42003 (BUOY)	210NM W OF CAPTIVA	1009.1	05/2300

C. RAINFALL TOTALS...

THE FOLLOWING ARE PRELIMINARY RAINFALL AVERAGES FROM HIGHEST TO LOWEST BY COUNTY. FOR SELECTED UNOFFICIAL VALUES...CHECK OUR WEBSITE AT [HTTP://WWW.SRH.NOAA.GOV/TBW](http://www.srh.noaa.gov/tbw) AND CLICK ON PUBLIC INFORMATION STATEMENT IN THE TABLE AT RIGHT.

COUNTY	RAINFALL RANGE
CHARLOTTE	5 TO 10 INCHES
SARASOTA	3 TO 9 INCHES
LEE	2 TO 7 INCHES
DESOTO	2 TO 6 INCHES
MANATEE	1 TO 3 INCHES
HIGHLANDS	1 TO 3 INCHES
HERNANDO	3 TO 6 INCHES IN EAST SPRING HILL AND SOUTH BROOKSVILLE...1 INCH ELSEWHERE
PASCO	1 TO 2 INCHES
HARDEE	1 TO 2 INCHES
PINELLAS	1 INCH
HILLSBOROUGH	1/2 TO 1 INCH
SUMTER	1/2 TO 1 INCH
LEVY	LESS THAN 1 INCH
CITRUS	LESS THAN 1 INCH
POLK	LESS THAN 1 INCH

D. MAXIMUM STORM SURGE (STORM TIDE) AND ESTIMATED TIME...

TIDES WERE ONE HALF TO ONE FOOT ABOVE NORMAL.

E. BEACH EROSION...

NONE REPORTED.

F. FLOODING...

HERNANDO COUNTY...SIX INCHES OF RAIN IN ONE HOUR AROUND 6 AM SEPTEMBER 6TH NEAR THE BROOKSVILLE AIRPORT CLOSED NUMEROUS ROADS DUE TO HIGH WATER. MANY OF THE ROADS WERE OPENED IN AN HOUR OR TWO AS THE WATER DRAINED.

SARASOTA COUNTY...5 TO 9 INCHES OF RAIN FELL BETWEEN SOUTH VENICE AND ENGLEWOOD DURING THE EVENT. THERE WERE LOCAL ROAD CLOSURES IN THE AREA UNTIL THE STORM DRAINS COULD CATCH UP. NO SIGNIFICANT DAMAGE WAS REPORTED.

CHARLOTTE COUNTY...SEVEN INCHES OF RAIN FROM 3-6 PM ON FRIDAY THE 5TH CAUSING STREET FLOODING IN THE TEE-N-GREEN AREA OF PUNTA GORDA. A TOTAL OF 10 INCHES OF RAIN FELL IN THE CITY OF CHARLOTTE

HARBOR (WHICH IS JUST SOUTH OF PORT CHARLOTTE) ON SEPTEMBER 5TH. BOTH OF THESE EVENTS LEAD TO FLOODED STREETS. SOME WATER ENTERED HOMES DUE TO WAKES FROM VEHICLES DRIVING IN THE WATER.

LEE COUNTY...RAINFALL OF 2 TO 7 INCHES SLOWED WORK ON PRIVATE ROADS DAMAGED DURING THE JUNE FLOOD. NO SIGNIFICANT DAMAGE TO HOMES OR INFRASTRUCTURE WAS REPORTED WITH THIS EVENT.

G. TORNADES...

NONE REPORTED.

H. PRELIMINARY STORM EFFECTS...

- 1) DEATHS.....NONE.
- 2) INJURIES...ONE. A MALE IN LEE COUNTY WAS STRUCK BY LIGHTNING FROM A STORM IN A FEEDER BAND. AN INDIRECT INJURY OCCURRED AS A 55 YEAR OLD PINELLAS PARK MAN HYDRO-PLANED INTO A CONCRETE WALL ON INTERSTATE 275 IN TAMPA.
- 3) DAMAGE BY COUNTY...(FROM COUNTIES AND MEDIA):

NO WIND DAMAGE REPORTED.
- 4) NUMBER OF PEOPLE EVACUATED...NONE

* WIND MEASURED IN THUNDERSTORM.

** WIND DATA ESTIMATED.

LOWEST PRESSURE OBSERVED ON LAND.

PUBLIC INFORMATION STATEMENT

NATIONAL WEATHER SERVICE TAMPA BAY AREA - RUSKIN FL
930 PM EDT SAT SEP 6 2003

...A WIDE VARIATION IN RAINFALL FROM TROPICAL STORM HENRI ACROSS FLORIDA'S SUNCOAST...

TROPICAL STORM HENRI...WHICH WEAKENED BEFORE MAKING LANDFALL EARLY SATURDAY IN PINELLAS COUNTY...PRODUCED WEATHER RANGING FROM FLOODING RAINS FROM SARASOTA COUNTY SOUTHWARD TO NOTHING MORE THAN CLOUDS AND SPRINKLES IN PORTIONS OF INTERIOR WEST CENTRAL FLORIDA.

TWO DISTINCT HEAVY RAIN AREAS WERE OBSERVED. IN SOUTHWEST FLORIDA... STORM TOTALS FROM EXTREME SOUTHERN SARASOTA COUNTY THROUGH WESTERN CHARLOTTE AND LEE COUNTIES RANGED FROM 5 TO 8 INCHES. THE BULK OF THIS RAIN OCCURRED ON FRIDAY...FED BY CHANNELED SOUTHWESTERLY FLOW OF DEEP TROPICAL MOISTURE WHICH CAUSED REPEATING DOWNPOURS.

IN A SMALL AREA OF SOUTHERN HERNANDO COUNTY...INCLUDING EASTERN SPRING HILL AND MASARYKTOWN...OVER 4 INCHES FELL IN ABOUT 3 HOURS EARLY SATURDAY. THIS BULLSEYE OF PRECIPITATION WAS DIRECTLY RELATED TO CONVERGENCE AROUND THE CENTER OF HENRI'S REMAINS...WHICH PRODUCED A POTENT THUNDERSTORM.

OTHER AREAS RECEIVED SIGNIFICANTLY LESS RAINFALL. IN THE TAMPA BAY METROPOLITAN AREA...STORM TOTALS WERE GENERALLY ONE HALF TO ONE AND

ONE HALF INCHES. POLK COUNTY HAD LESS THAN ONE INCH.

FOLLOWING ARE PRELIMINARY AND UNOFFICIAL RAINFALL TOTALS FOR THE
THE 40 HOURS FROM 8 PM SEPTEMBER 4TH UNTIL NOON SEPTEMBER 6TH:

OBSERVING SITE	COUNTY	40 HOUR RAINFALL TOTAL ENDING NOON (INCHES)
...AIRPORTS...		
FORT MYERS/PAGE FIELD	LEE	6.05
PUNTA GORDA/CHARLOTTE CO	CHARLOTTE	5.89
BROOKSVILLE/HERNANDO CO	HERNANDO	4.67
SARASOTA-BRADENTON INTL	MANATEE	3.44
FORT MYERS/SW FL INTL	LEE	2.23
ST PETE/ALBERT WHITTED	PINELLAS	1.57
TAMPA/MACDILL AFB	HILLSBOROUGH	1.34
CLEARWATER/ST PETE CLWTR INTL	PINELLAS	0.76
TAMPA/INTL ARPT	HILLSBOROUGH	0.62
LAKELAND/LINDER FLD	POLK	0.20
WINTER HAVEN/GILBERT FIELD	POLK	0.16

...OTHERS...

SOUTH VENICE	SARASOTA	8.00
POINT LONESOME	CHARLOTTE	7.58
NOKOMIS	SARASOTA	7.39
VENICE	SARASOTA	7.27
PUNTA GORDA 8 NE	CHARLOTTE	7.18
ENGLEWOOD 4 NNW	SARASOTA	7.11
ENGLEWOOD 3 SE	CHARLOTTE	7.02
VENICE 2 S	SARASOTA	6.25
VENICE 5 NE	SARASOTA	5.98
NORTH PORT	SARASOTA	5.53
ENGLEWOOD	SARASOTA	5.43
FORT OGDEN 14 E	DESOTO	5.10
BROOKSVILLE	HERNANDO	4.50
SARASOTA	SARASOTA	4.29
FORT OGDEN	DESOTO	4.22
MASARYKTOWN 2E	HERNANDO	3.75
VAMO 2 N	SARASOTA	3.56
PALMA SOLA	MANATEE	3.35
WARES CREEK	MANATEE	2.69
SARASOTA 5 ESE	SARASOTA	2.35
BRADENTON 5 ESE	MANATEE	2.24
ST. LEO	PASCO	2.18
GARDNER	HARDEE	1.86
GULFPORT	PINELLAS	1.70
ARCADIA 8 WNW	DESOTO	1.82
MYAKKA CITY	MANATEE	1.45

FOR MORE CLIMATE INFORMATION VISIT OUR WEB SITE AT THE FOLLOWING
LINK: [HTTP://WWW.SRH.NOAA.GOV/TBW/](http://www.srh.noaa.gov/tbw/) AND THEN CLICK ON THE CLIMATE
PAGE LINK.

FOR MORE ON HENRI'S AFTERMATH...LOOK FOR THE PRELIMINARY STORM
REPORT (WMO CODE ACUS72) BY MONDAY AFTERNOON SEPTEMBER 8.

\$\$