

Tornadoes Hit Port Charlotte Area



Photograph of funnel cloud over Port Charlotte

About 40 Homes Damaged by the Tornadoes

A small tornado rapidly developed near the merger of the east and west coast sea breezes at around 7:17 PM EDT June 21, 2006. This collision occurred about 20 miles inland (Figure 1) over Port Charlotte.

The tornado which effected the Port Charlotte area causing an estimated \$500,000 in damage and three injuries, first touched down a short distance northeast of the Charlotte County Cultural Center. It then moved southwest for about three miles ending around the 4200 block of Rock Creek Drive (Figure 2). It caused damage in several locations along its path, most of which was rated as F0/F1 on the Fujita Scale. However, damage rated as F2 occurred on the 300 block of East Tarpon Boulevard NW. One home was destroyed and debris from the roof was found impaled in the ground one half mile away. A man was in a motor home when it flipped over five times leaving only the floor board and wheels intact. He miraculously was ok and only needed a few staples and some stitches.

Another weaker tornado effected the Harbor View mobile home park along the Peace River causing an estimated \$30,000 in damage. It appears that this tornado likely formed as a waterspout then moved onshore into the mobile home park and rapidly dissipated. Damage was mostly to aluminum car ports and small sheds.

For more detailed information check the Public Information Statement below.

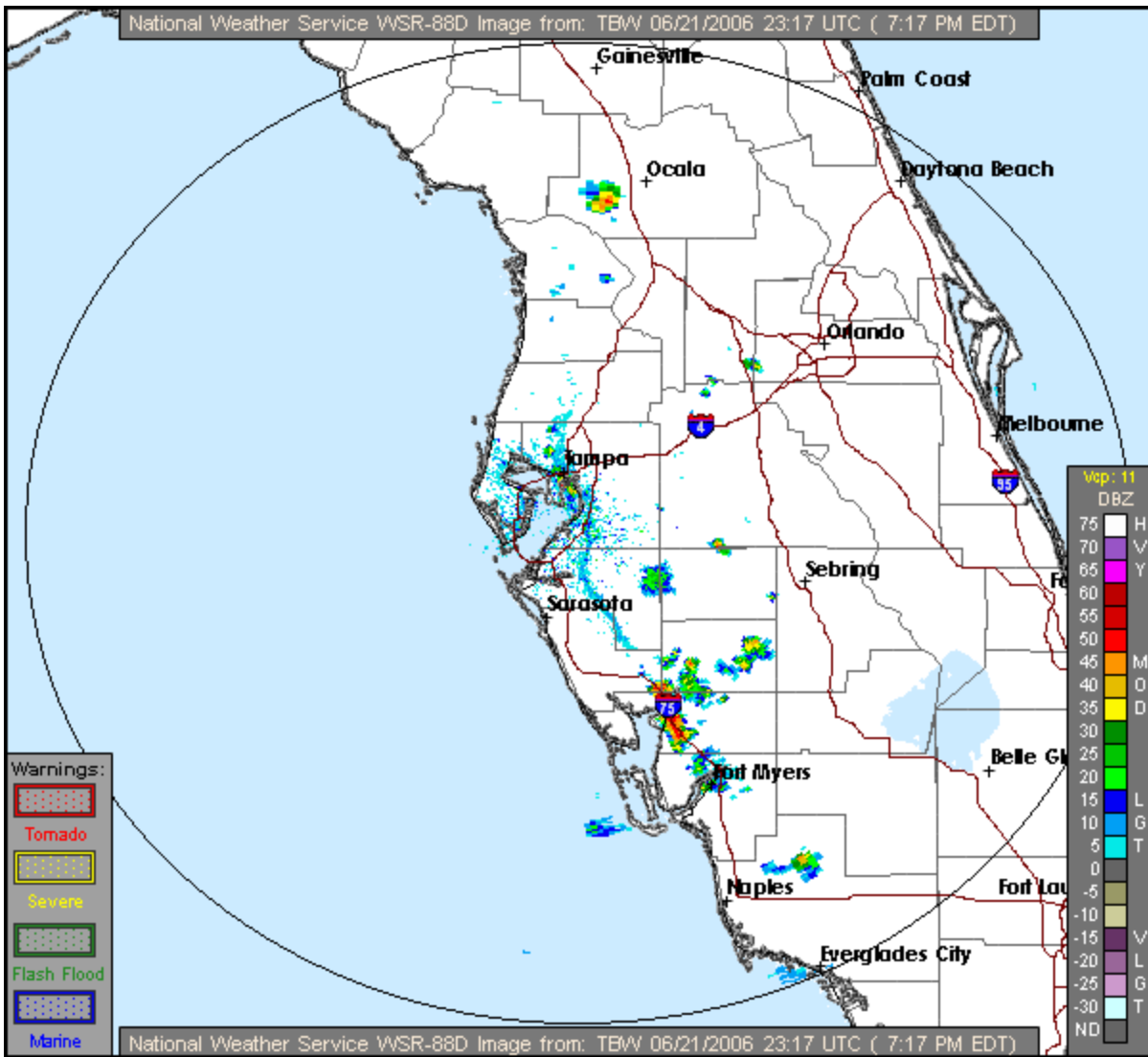


Figure 1. Base reflectivity, 7:17 PM EDT June 21st.
 Note the gulf coast sea breeze boundary, indicated by the light blue line, from Tampa Bay south-southeast to Fort Myers.

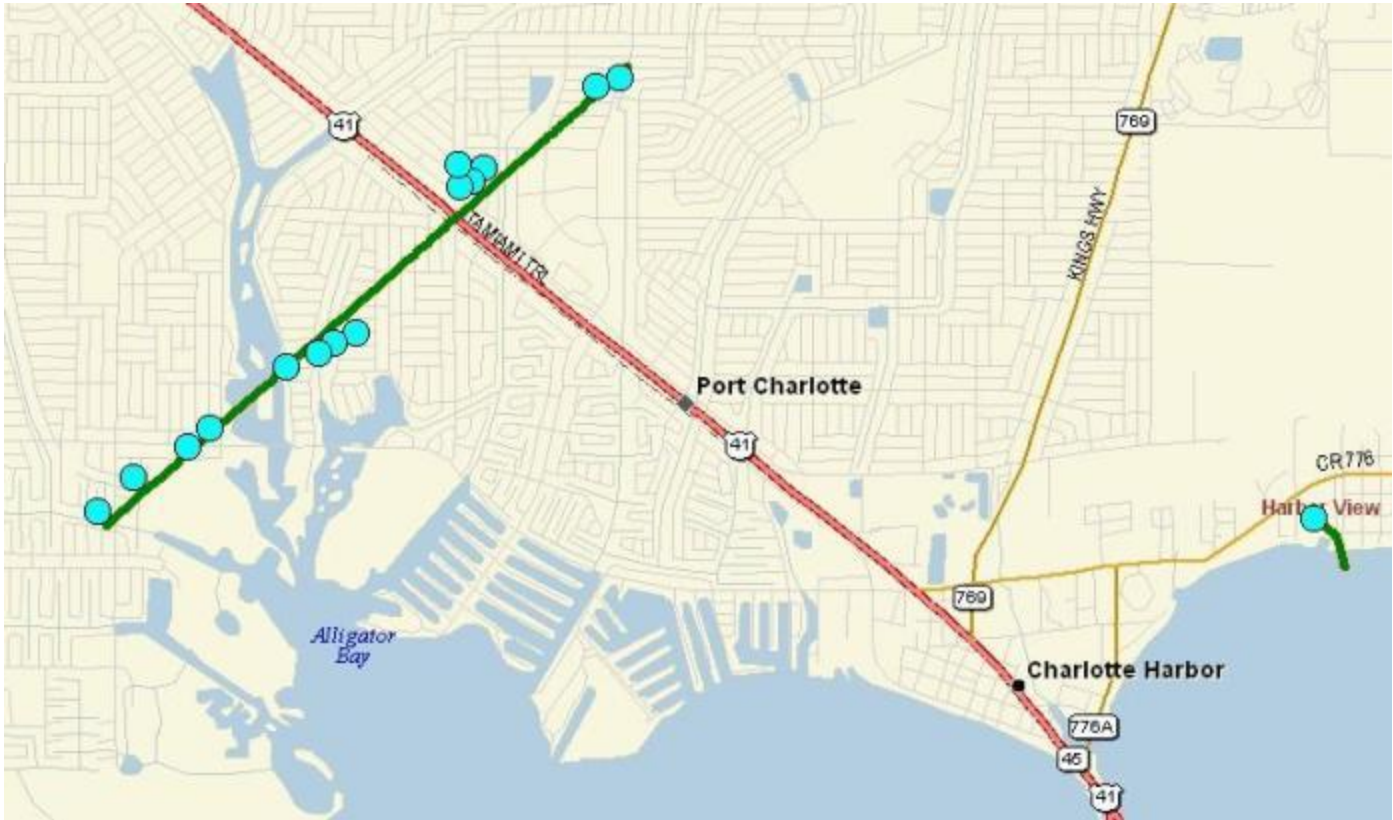


Figure 2. Track of Port Charlotte tornadoes (green lines) as overlay on map of northwest Charlotte County. Blue circles indicate locations with damage. Click on image for larger view.









**PUBLIC INFORMATION STATEMENT
NATIONAL WEATHER SERVICE TAMPA BAY AREA - RUSKIN FL
640 PM EDT THU JUN 22 2006**

...TORNADO SURVEY FOR JUNE 21 PORT CHARLOTTE AREA TORNADOES...

SCATTERED THUNDERSTORMS DEVELOPED IN THE PORT CHARLOTTE AREA WEDNESDAY EVENING AS THE EAST COAST SEA BREEZE COLLIDED WITH THE WEST COAST SEA BREEZE. RAPID DEVELOPMENT OF THE STORMS LED TO AT LEAST TWO TORNADOES.

TARPON BLVD TORNADO

- **STRENGTH: F2 (125 MPH)**
- **PATH: 1.5 MILES NORTH NORTHWEST TO 2.7 MILES WEST SOUTHWEST OF DOWNTOWN PORT CHARLOTTE.**
- **PATH LENGTH: 3 MILES**
- **PATH WIDTH: 200 FEET, VERY NARROW DAMAGE PATH**
- **DATE/TIME: WEDNESDAY, JUNE 21, 2006, 717 PM EDT TO 737 PM EDT**
- **INJURIES: 3, NO FATALITIES**
- **DAMAGE: ABOUT 25 HOMES DAMAGED**
- **DAMAGE AMOUNT: ESTIMATED \$500,000**
- **NOTES: MOST OF THE DAMAGE WAS F0/F1. THE F2 DAMAGE OCCURRED AT HOMES ON THE 300 BLOCK OF EAST TARPON BLVD NW. ONE HOME WAS DESTROYED AND DEBRIS FROM THE ROOF WAS FOUND**

IMPALED INTO THE GROUND ONE HALF MILE AWAY. A MAN WAS IN A MOTOR HOME WHEN IT FLIPPED OVER FIVE TIMES AND REQUIRED NUMEROUS STITCHES. ONLY THE FLOOR BOARD AND WHEELS OF THE RV REMAINED.

HARBOR VIEW TORNADO

- STRENGTH: F0 (60 MPH)
- PATH: 1.5 MILES NORTHEAST OF THE CITY OF CHARLOTTE HARBOR
- PATH LENGTH: 1/2 MILE
- PATH WIDTH: 300 FEET
- DATE/TIME: WEDNESDAY, JUNE 21, 2006, 727 PM EDT TO 732 PM EDT
- INJURIES: 0, NO FATALITIES
- DAMAGE: ABOUT 15 MANUFACTURED HOMES DAMAGED
- DAMAGE AMOUNT: ESTIMATED \$30,000 IN DAMAGE
- NOTES: LIKELY FORMED AS A WATERSPOUT THEN MOVED ONSHORE IN THE MOBILE HOME PARK AND RAPIDLY DISSIPATED. DAMAGE WAS MOSTLY TO ALUMINUM CAR PORTS AND SMALL SHEDS.

A MAP OF THE TORNADO PATHS AND PICTURES OF THE DAMAGE WILL BE AVAILABLE ON OUR WEB SITE AT [HTTP://WWW.SRH.NOAA.GOV/TBW](http://www.srh.noaa.gov/tbw) FRIDAY EVENING.

\$\$
NOAH