

Sumter County Tornado

Text Products

000
WWUS62 KTBW 020556
WCNTBW

WATCH COUNTY NOTIFICATION FOR WATCHES 14/15
NATIONAL WEATHER SERVICE TAMPA BAY AREA - RUSKIN FL
1256 AM EST FRI FEB 2 2007

FLC075-021100-
/O.CAN.KTBW.TO.A.0014.000000T0000Z-070202T0600Z/
/O.NEW.KTBW.TO.A.0015.070202T0556Z-070202T1100Z/

THE NATIONAL WEATHER SERVICE HAS ISSUED TORNADO WATCH 15 UNTIL
6 AM EST EARLY THIS MORNING WHICH REPLACES A PORTION OF TORNADO
WATCH 14. THE NEW WATCH IS VALID FOR THE FOLLOWING AREAS

IN FLORIDA THE NEW WATCH INCLUDES 1 COUNTY

IN WEST CENTRAL FLORIDA

LEVY

THIS INCLUDES THE CITIES OF...CEDAR KEY AND CHIEFLAND.

\$\$

GMZ850-021100-
/O.CAN.KTBW.TO.A.0014.000000T0000Z-070202T0600Z/
/O.NEW.KTBW.TO.A.0015.070202T0556Z-070202T1100Z/

THE NATIONAL WEATHER SERVICE HAS ISSUED TORNADO WATCH 15 UNTIL
6 AM EST EARLY THIS MORNING WHICH REPLACES A PORTION OF TORNADO
WATCH 14. THE NEW WATCH IS VALID FOR THE FOLLOWING AREAS

THE NEW WATCH INCLUDES THE FOLLOWING ADJACENT COASTAL WATERS

TARPON SPRINGS TO SUWANNEE RIVER OUT 20 NM

\$\$

FLC017-053-101-119-021100-
/O.NEW.KTBW.TO.A.0015.070202T0556Z-070202T1100Z/

THE NATIONAL WEATHER SERVICE HAS ISSUED TORNADO WATCH 15 IN
EFFECT UNTIL 6 AM EST EARLY THIS MORNING FOR THE FOLLOWING AREAS

IN FLORIDA THIS WATCH INCLUDES 4 COUNTIES

IN WEST CENTRAL FLORIDA

CITRUS
SUMTER

HERNANDO

PASCO

THIS INCLUDES THE CITIES OF...BROOKSVILLE...BUSHNELL...
CRYSTAL RIVER...INVERNESS...NEW PORT RICHEY...SPRING HILL...
THE VILLAGES AND ZEPHYRHILLS.

\$\$

000

WFUS52 KTBW 020803

TORTBW

FLC119-020820-

/O.NEW.KTBW.TO.W.0003.070202T0802Z-070202T0820Z/

BULLETIN - EAS ACTIVATION REQUESTED

TORNADO WARNING

NATIONAL WEATHER SERVICE TAMPA BAY AREA - RUSKIN FL
302 AM EST FRI FEB 2 2007

THE NATIONAL WEATHER SERVICE IN RUSKIN HAS ISSUED A

* TORNADO WARNING FOR...

NORTHERN SUMTER COUNTY IN FLORIDA.

* UNTIL 320 AM EST

* AT 302 AM EST...NATIONAL WEATHER SERVICE DOPPLER RADAR INDICATED A
TORNADO OVER NORTHWESTERN SUMTER COUNTY...MOVING EAST AT 35 MPH.

* THE TORNADO WILL BE NEAR...

RURAL NORTHERN SUMTER COUNTY BY 305 AM EST.

THIS IS A DANGEROUS STORM! MOVE INTO THE INTERIOR ROOM ON THE LOWEST
FLOOR OF A STURDY BUILDING...AWAY FROM WINDOWS. COVER YOUR HEAD AND
BODY WITH PILLOWS OR BLANKETS.

TORNADOES ARE ESPECIALLY DANGEROUS AT NIGHT. TAKE COVER NOW! MOVE TO
A SMALL INTERIOR ROOM ON THE LOWEST FLOOR OF A STURDY BUILDING.
ABANDON MOBILE HOMES. LEAVE VEHICLES AND GET INTO A DITCH OR LOW
SPOT.

PLEASE REPORT TORNADOES OR FUNNEL CLOUDS...WINDS OF 58 MPH OR
HIGHER...HAIL THE SIZE OF PENNIES OF LARGER...AND ANY WIND DAMAGE TO
YOUR NATIONAL WEATHER SERVICE IN RUSKIN BY CALLING 813-645-2323.

&&

LAT...LON 2896 8227 2883 8219 2888 8195 2895 8195

\$\$

24

000

NOUS42 KTBW 022209 CCA

PNSTBW

FLZ039-042-043-048>052-055>057-060>062-065-031200-

PUBLIC INFORMATION STATEMENT

NATIONAL WEATHER SERVICE TAMPA BAY RUSKIN FL

505 PM EST FRI FEB 2 2007

...TORNADO WITH 140 TO 150 MPH WINDS CONFIRMED IN NORTHEASTERN
SUMTER COUNTY...

A PRELIMINARY STORM SURVEY CONDUCTED BY STAFF FROM THE NWS OFFICE IN RUSKIN HAS DETERMINED THAT A TORNADO...CONTAINING WINDS UP TO 150 MPH...CAUSED SIGNIFICANT DAMAGE TO STRUCTURES FROM NEAR WILDWOOD TO THE VILLAGES IN NORTHEAST SUMTER COUNTY. THE TRACK BEGAN IN THE NORTHEAST PORTION OF WILDWOOD AT THE INTERSECTION OF HIGHWAY 301 AND COUNTY ROAD 462...THEN RACED NORTHEAST FOR 5 MILES BEFORE CONTINUING INTO THE LAKE COUNTY PORTION OF THE VILLAGES...ONE AND ONE HALF MILES SOUTH OF COUNTY ROAD 466. THOUGH THE FINAL COUNT OF DAMAGED OR DESTROYED HOMES...AS WELL AS INSURED DAMAGE...WILL NOT BE KNOWN FOR SEVERAL DAYS...THE FOLLOWING DETAILS HAVE BEEN OBTAINED FROM THE TEAM THUS FAR:

INTENSITY...LOW END EF-3 (SCALE 139-167 MPH). TRADITIONAL F-SCALE:
STRONG F-2 (F-2 SCALE RANGES FROM 113 TO 157 MPH). ACTUAL TORNADO
WINDS ESTIMATED AROUND 140-150 MPH. THIS IS ALSO

EVENT TIME...PRELIMINARY ESTIMATION 315 AM EST FRIDAY FEBRUARY 2 AT
THE VILLAGES. FINAL EVENT TIME WILL BE PROVIDED AS MORE DATA BECOME
AVAILABLE.

PATH LENGTH...5 MILES THROUGH SUMTER COUNTY. HOWEVER...THE TORNADO
CONTINUED INTO NORTHERN LAKE COUNTY AND SURVEYS ON THAT AREA WILL BE
CONDUCTED OVER THE WEEKEND.

FATALITIES...NO FATALITIES REPORTED.

INJURIES...NO INJURIES REPORTED THUS FAR.

DAMAGES...HUNDREDS OF HOUSES EITHER SEVERELY DAMAGED OR DESTROYED. FINAL COUNT LIKELY TO BE OVER 500 AFTER COUNTY EMERGENCY MANAGEMENT PERSONNEL COMPLETE THEIR DAMAGE SURVEYS. DOLLAR DAMAGE ESTIMATES WILL BE PROVIDED AFTER LOCAL...STATE...AND FEDERAL EMERGENCY MANAGEMENT STAFF COMPLETE THEIR ASSESSMENTS.

THIS STATEMENT WILL BE UPDATED AS SOON AS ADDITIONAL INFORMATION IS AVAILABLE.

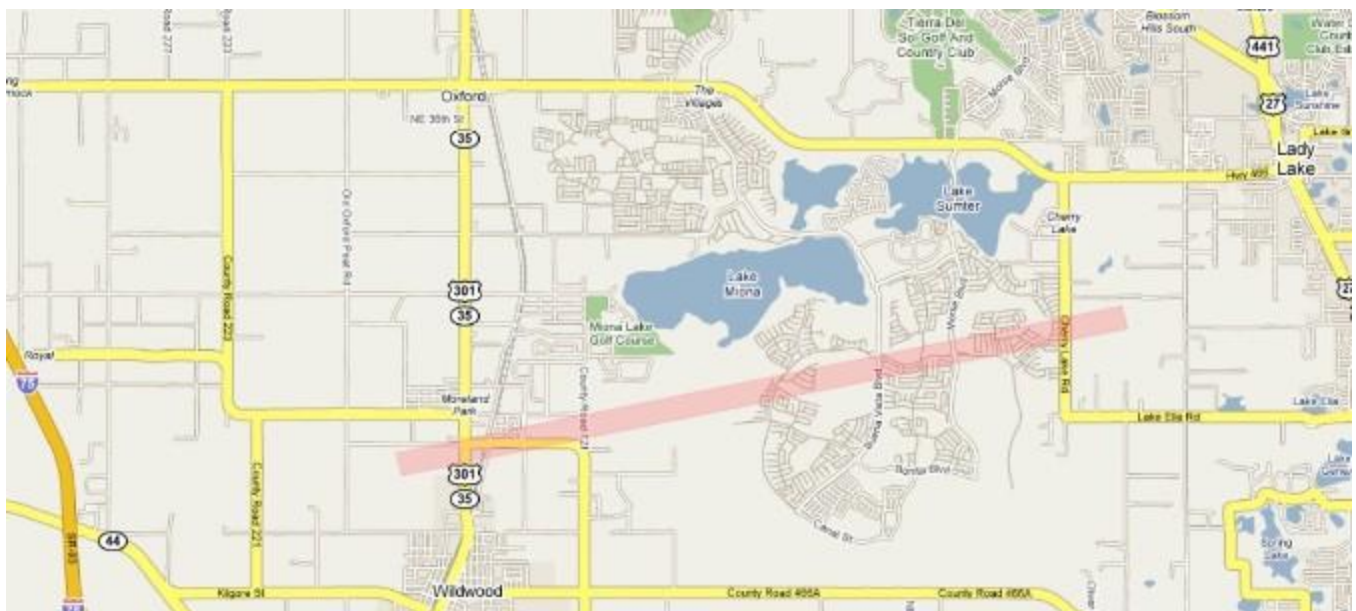
THE NEW EF-SCALE WAS DEVELOPED TO BETTER ASSESS WIND SPEEDS ASSOCIATED WITH A WIDE VARIETY OF STRUCTURAL DAMAGE...FROM SINGLE-WIDE MOBILE HOMES TO INDUSTRIAL BUILDINGS TO FRAMED ONE OR TWO FAMILY HOMES...AND MANY MORE. THIS SCALE IS CONSIDERED A DAMAGE SCALE...WHEREAS THE TRADITIONAL FUJITA SCALE (F-SCALE) WAS MORE OF A WIND SPEED SCALE.

FOR MORE INFORMATION ON THE NEW EF SCALE...PLEASE SEE THE FOLLOWING WEBSITE:

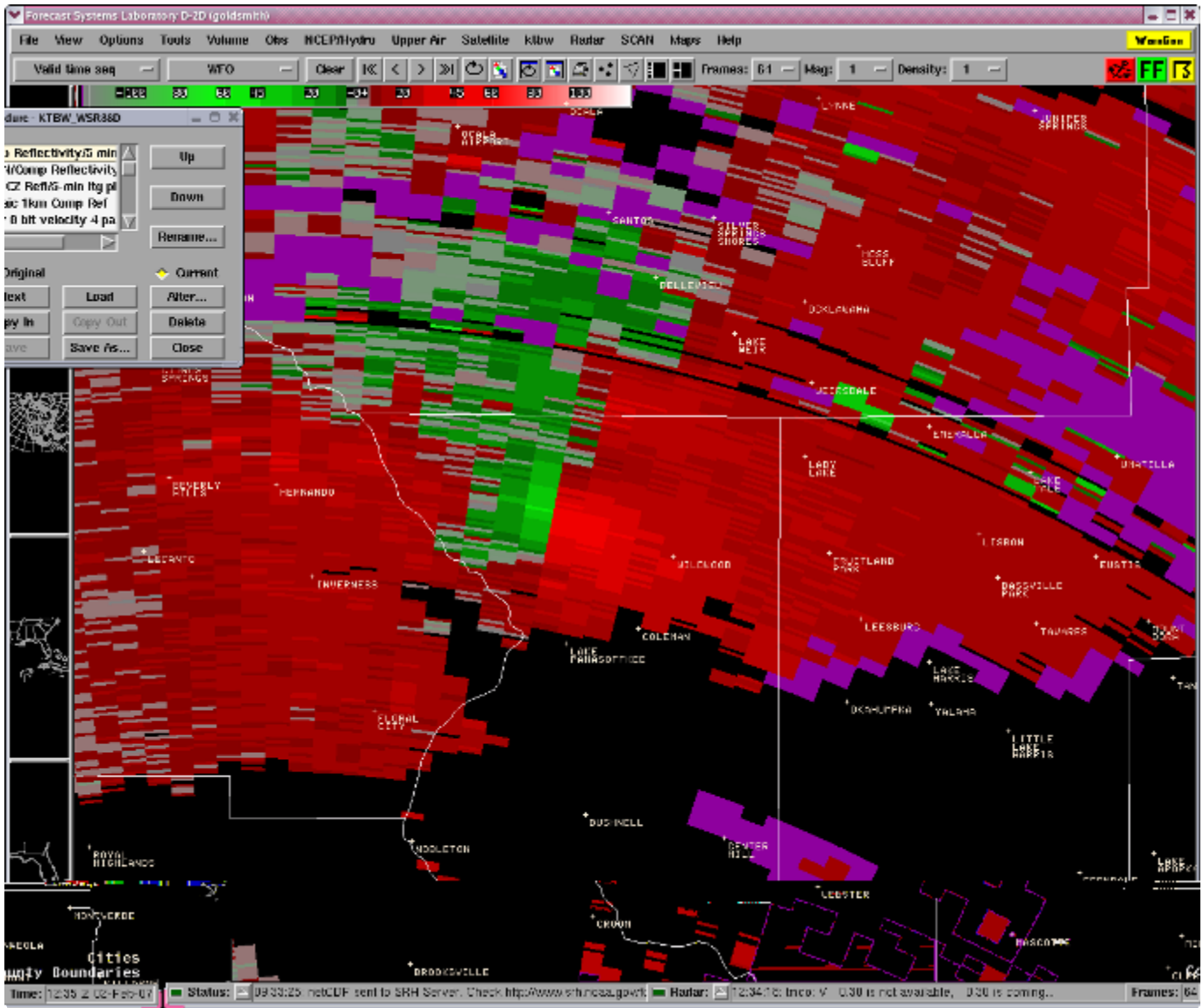
[HTTP://WWW.SPC.NOAA.GOV/EFSCALE](http://www.spc.noaa.gov/efscale)

\$\$

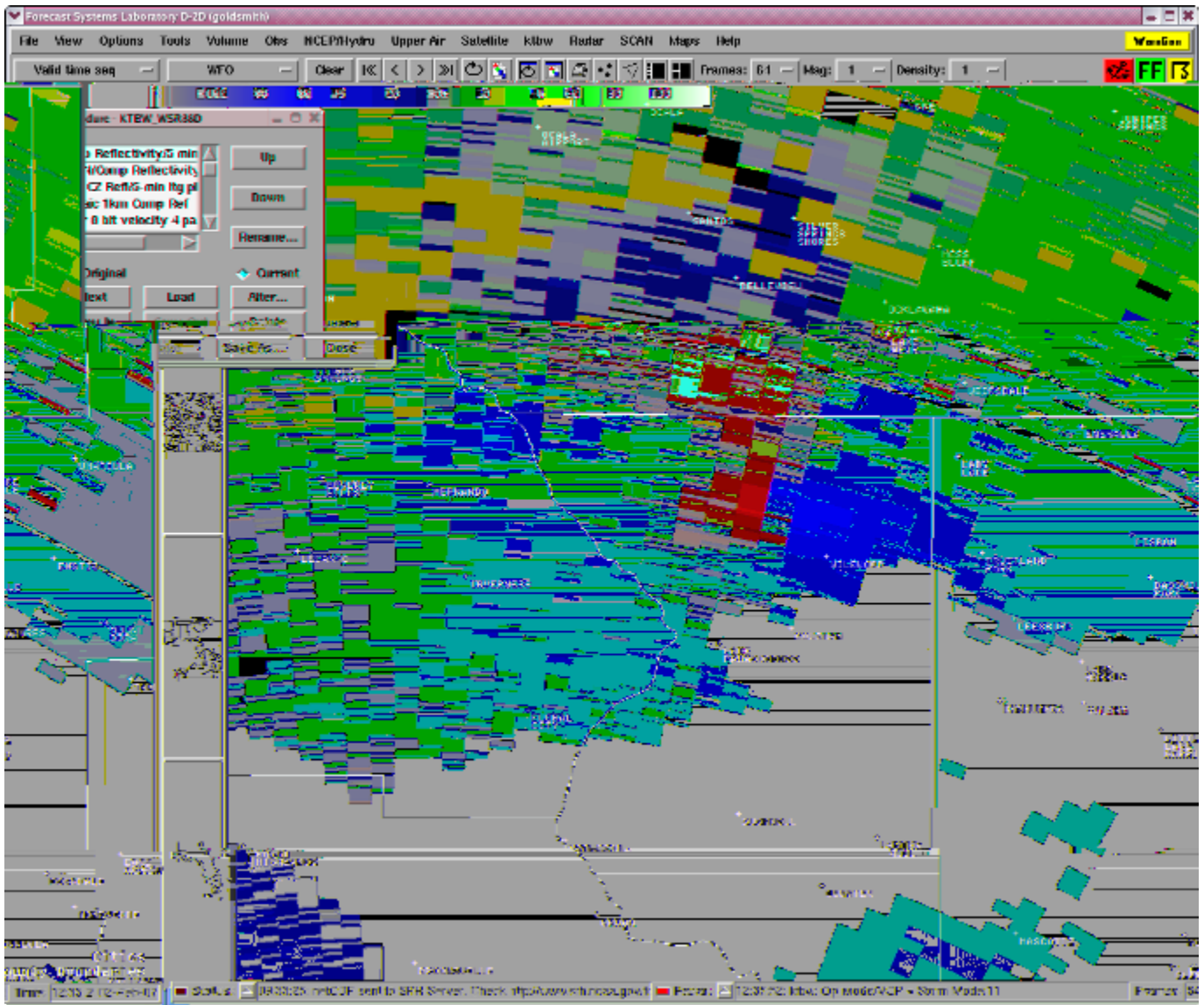
REYNES/GOLDSMITH
NWS TAMPA BAY AREA - RUSKIN FL



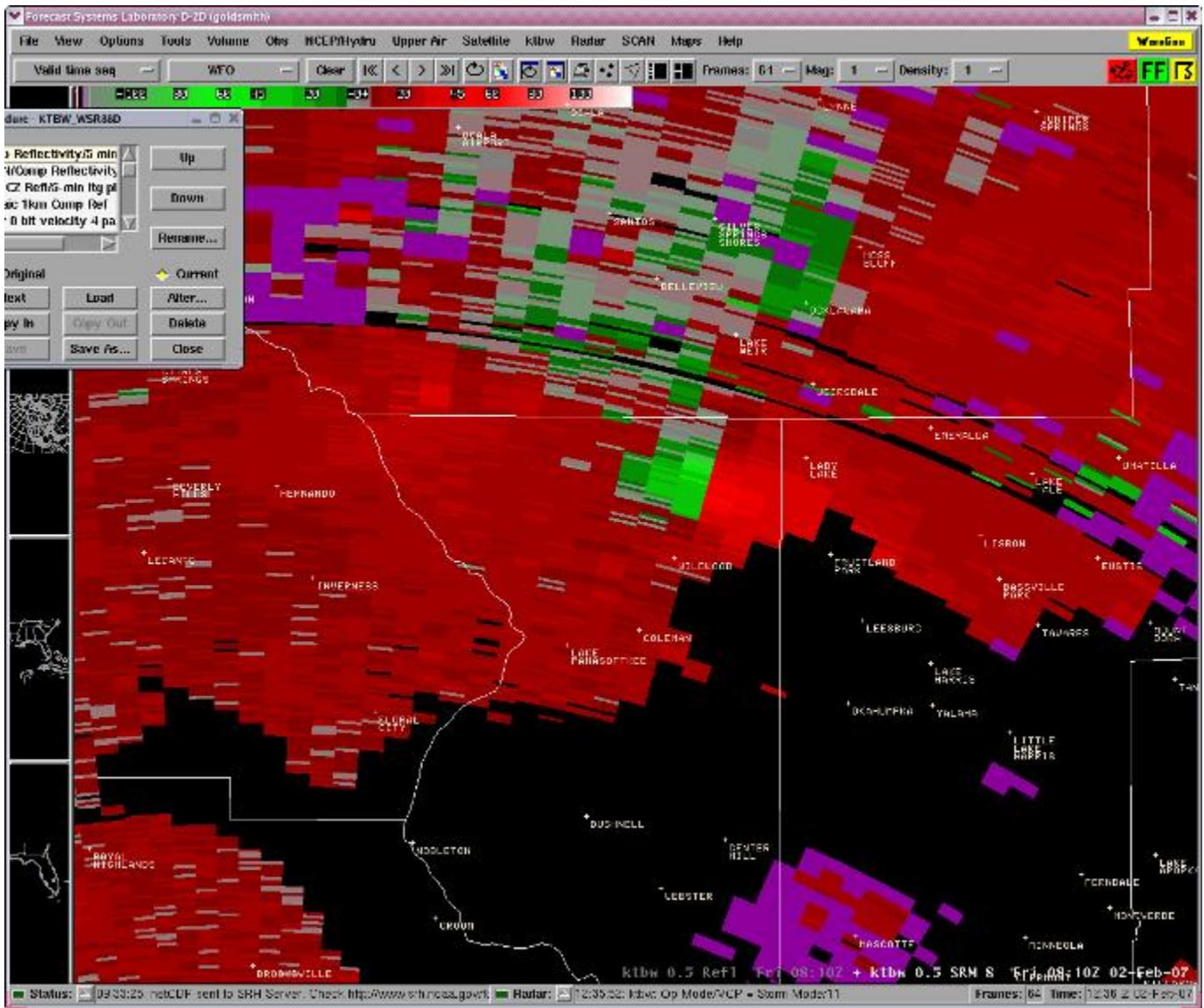
Tornado Path



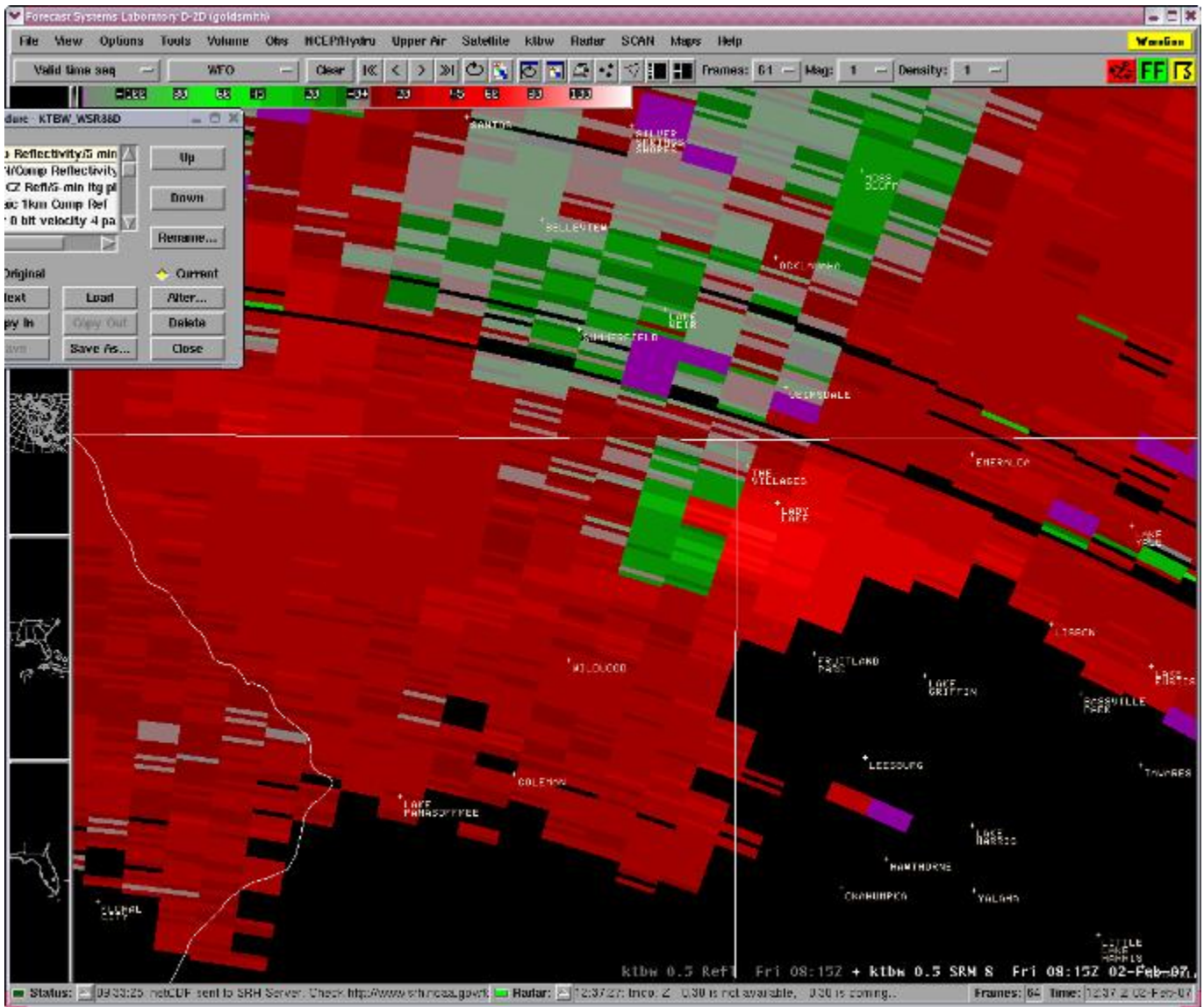
Tornado warning was issued at 3:02 AM EST based on the Doppler radar Storm-Relative Velocity couplet (depicted by the bright red/green velocity couplet) observed west northwest of Wildwood.



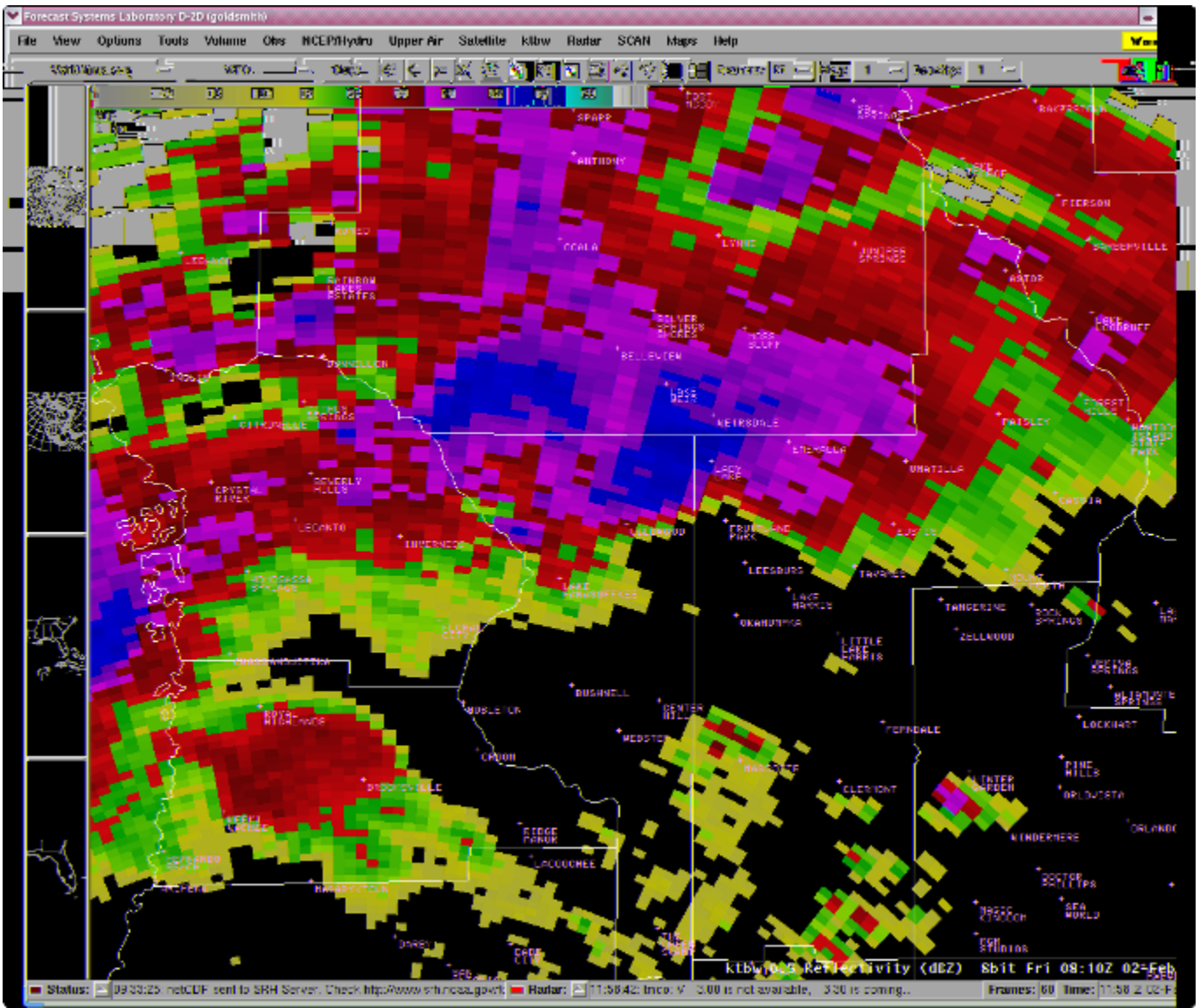
The Tornado (indicated by the strong storm-relative velocity bright red/green couplet) continued to move rapidly to the east-northeast just northwest of the Wildwood area at 3:06 AM EST.



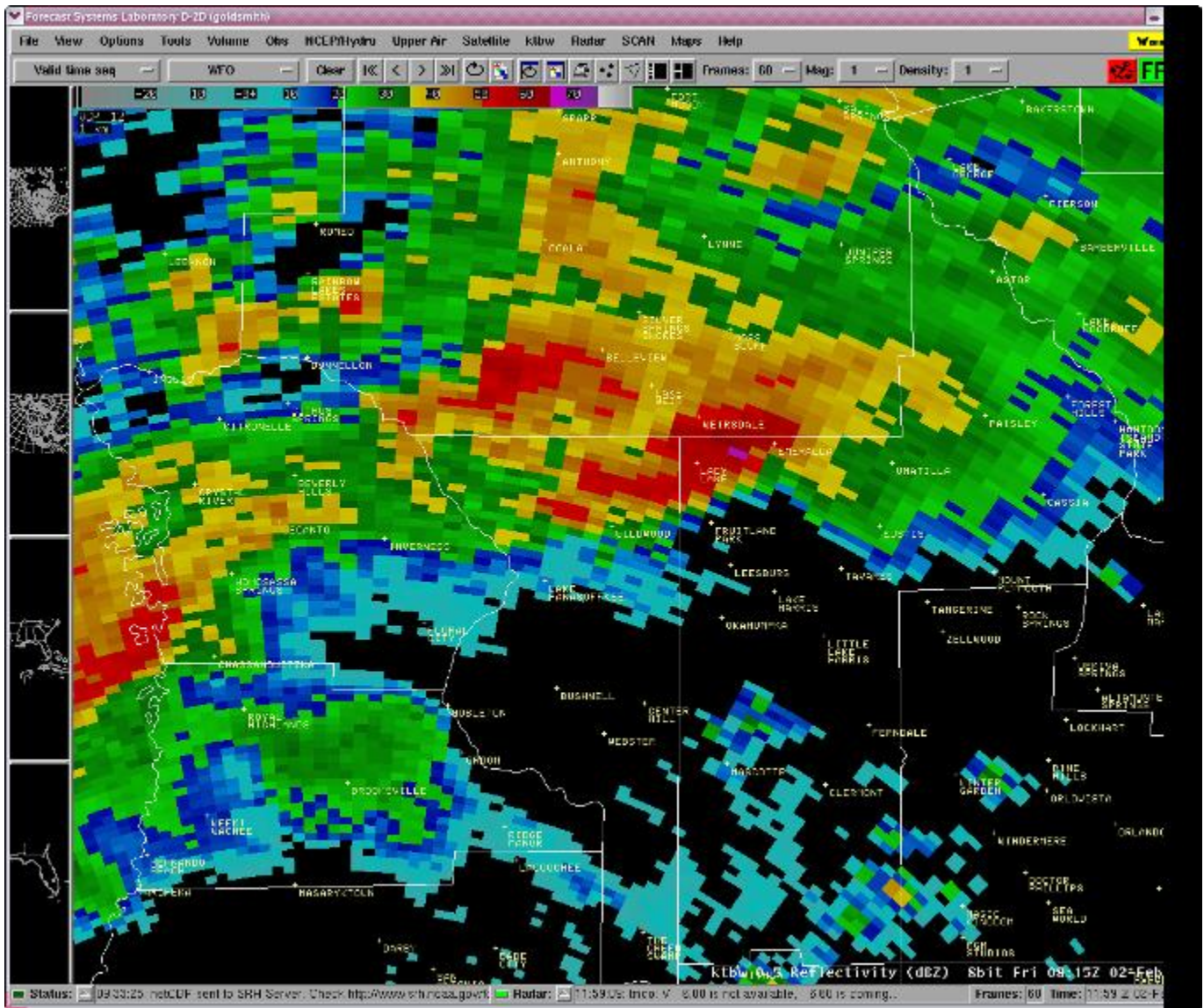
Four minutes later at 3:10 AM EST the Tornado (depicted by the bright red/green Storm-Relative velocity couplet) became even more intense as it moved rapidly east-northeast toward The Villages and Lady Lake areas. Based on the Velocity return at this time, at least 100 knot gate to gate shear is being indicated by the radar.



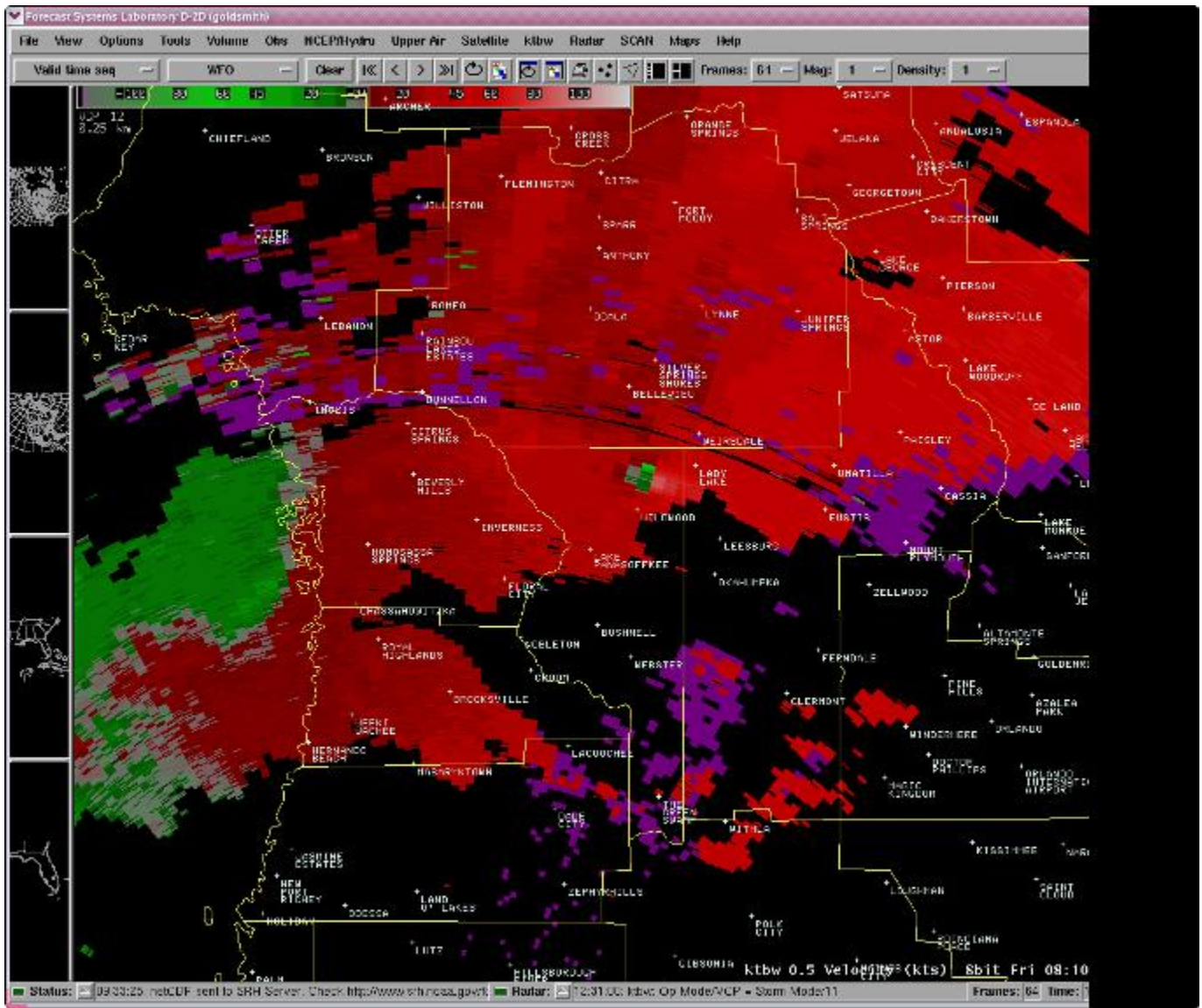
Five minutes later at 3:15 AM EST the Tornado (depicted by the bright red/green Storm-Relative velocity couplet) continued to intensify as it began to impact The Villages and Lady Lake areas.



At 3:10 AM EST, the 88D Doppler Radar Base Reflectivity shows the tornado affecting The Village, however the typical Hook Echo signature is being masked by the Heavy Precipitation field.



At 3:15 AM EST the 88D Base Reflectivity shows the tornado now affecting the Lady Lake area. Again the typical Hook Echo signature is being masked by the Heavy precipitation field.



At 3:10 AM EST the 88D Base Velocity return showed the tornado (depicted by the red/green velocity couplet) right over the Villages.

Sumter County Tornado Damage































