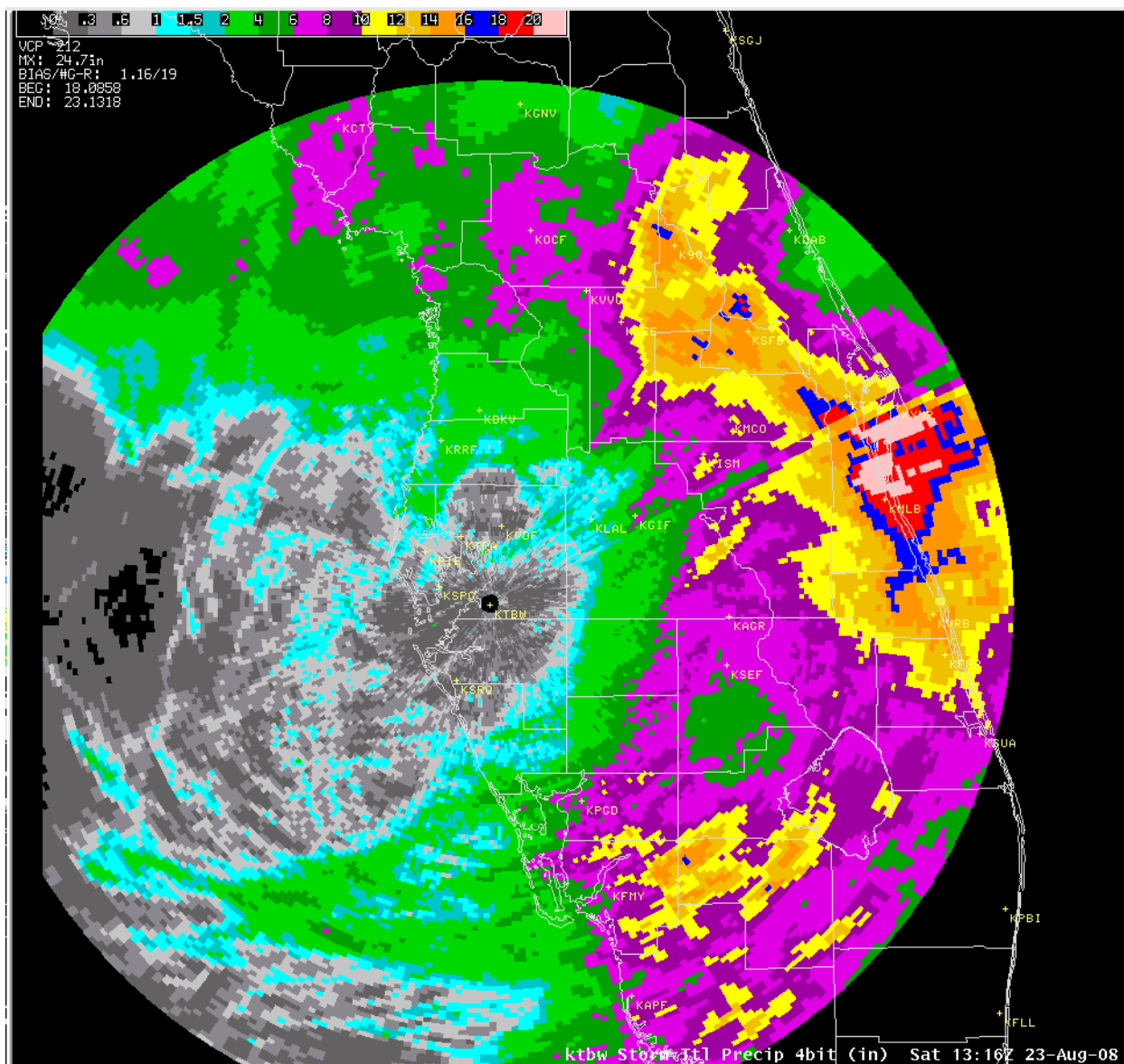


PUBLIC INFORMATION STATEMENT
NATIONAL WEATHER SERVICE TAMPA BAY AREA - RUSKIN FL
120 AM EDT MON AUG 25 2008

...THE WEEK OF FAY FINALLY COMES TO AN END...

FOR MOST OF LAST WEEK, TROPICAL STORM FAY WAS AFFECTING WEST CENTRAL AND SOUTHWEST FLORIDA IN SOME WAY. NOW THAT THE WEEK OF FAY HAS COME TO AN END...LETS TAKE A LOOK AT HOW MUCH RAIN FELL AND JUST HOW STRONG THE WINDS WERE AT SOME SITES ACROSS THE REGION.

AS FAR AS RAIN GOES THE TAMPA BAY REGION RECEIVED THE LEAST AMOUNT WITH GENERALLY LESS THAN 2 INCHES ACROSS THE AREA. IN OUR AREA THE MOST RAIN FELL ACROSS PORTIONS OF LEE, HIGHLANDS AND EASTERN POLK COUNTIES EARLY IN THE WEEK, AND LEVY, CITRUS, AND NORTHERN SUMTER COUNTIES LATE IN THE WEEK. IN THESE AREAS AMOUNTS GENERALLY RANGED FROM 6 TO ALMOST 12 INCHES WHICH CAN BE SEEN IN THE STORM TOTAL RAINFALL IMAGE BELOW.



FOLLOWING ARE PRELIMINARY AND UNOFFICIAL RAINFALL TOTALS FOR MONDAY
AUGUST 18TH THROUGH SATURDAY AUGUST 23RD AT SOME LOCATIONS ACROSS WEST
CENTRAL AND SOUTHWEST FLORIDA:

OBSERVING SITE	COUNTY	RAINFALL (INCHES)
..AIRPORTS:		
FORT MYERS/SOUTHWEST INTL	LEE	6.90
FORT MYERS/PAGE FIELD	LEE	6.88
PUNTA GORDA/CHARLOTTE CO	CHARLOTTE	5.27
BROOKSVILLE/HERNANDO CO	HERNANDO	3.59
WINTER HAVEN/GILBERT FIELD	POLK	3.11
LAKELAND LINDER	POLK	2.00
ST PETE/CLEARWATER INTL	PINELLAS	1.03
RUSKIN - NWS OFFICE	HILLSBOROUGH	0.84
TAMPA INTL	HILLSBOROUGH	0.72
ST PETE/ALBERT WHITTED	PINELLAS	0.58
SARASOTA-BRADENTON INTL	MANATEE	0.56
..OTHERS (SORTED BY COUNTY):		
LOWER SUWANNEE (RAWS)	LEVY	11.72
DUNNELON 10.1 NW (COCORAHS)	LEVY	11.48
GOETHE STATE FOREST (SRWMD)	LEVY	10.59
BRONSON 3 SE (COCORAHS)	LEVY	8.88
YANKEETOWN 4 SW	LEVY	8.34
INGLIS DAM (SWFWMD)	LEVY	7.75
FANNING SPRINGS (SRWMD)	LEVY	6.67
WILLISTON (SWFWMD)	LEVY	5.93
ROSEWOOD (SRWMD)	LEVY	5.75
CRYSTAL RIVER 4.7 ESE (COCORAHS)	CITRUS	8.53
INVERNESS 1.6 WSW (COCORAHS)	CITRUS	8.43
HERNANDO (SWFWMD)	CITRUS	8.18
HOLDER (WITHLACOOCHEE RVR-SWFWMD)	CITRUS	8.14
INVERNESS 3 SE (COOP)	CITRUS	7.97
INVERNESS (SWFWMD)	CITRUS	7.78
CRYSTAL RIVER 5.2 NNE (COCORAHS)	CITRUS	6.63
CRYSTAL RIVER 4 S (SWFWMD)	CITRUS	5.52
FLORAL CITY (SWFWMD)	CITRUS	4.59
CHASSAHOWITZKA (SWFWMD)	CITRUS	4.06
BROOKSVILLE 8 NW (SWFWMD)	HERNANDO	5.03
SPRING HILL 1.5 NNE (COCORAHS)	HERNANDO	4.58
BROOKRIDGE 2.2 WSW (COCORAHS)	HERNANDO	4.45
RIDGE MANOR 0.2E (COCORAHS)	HERNANDO	4.32
BROOKRIDGE 1.4 NNW (COCORAHS)	HERNANDO	4.04
SPRING HILL 3.3 SE (COCORAHS)	HERNANDO	3.83
TRILBY (WITHLACOOCHEE RVR-SWFWMD)	HERNANDO	3.59
MASARYKTOWN 5 W (SWFWMD)	HERNANDO	3.07
THE VILLAGES (COCORAHS)	SUMTER	7.88
THE VILLAGES 2.7 NNW (COCORAHS)	SUMTER	7.53

COLEMAN 2 W (SWFWMD)	SUMTER	5.71
DADE CITY 10 E (GREEN SWAMP-SWFWMD)	SUMTER	2.48
DADE CITY 4.3 N (COCORAHNS)	PASCO	3.57
DADE CITY 4.6 SSE (COCORAHNS)	PASCO	2.90
GOWERS CORNER 2 N (SWFWMD)	PASCO	2.89
ELFERS 4.4 ESE (COCORAHNS)	PASCO	2.76
ZEPHYRHILLS 3.8 WSW (COCORAHNS)	PASCO	2.70
ST LEO (COOP)	PASCO	2.52
ZEPHYRHILLS 2.7 NNW (COCORAHNS)	PASCO	2.39
LAND O` LAKES (SWFWMD)	PASCO	2.00
HUDSON 1.1 ESE (COCORAHNS)	PASCO	1.29
PORT RICHEY 2 NNE (COCORAHNS)	PASCO	1.18
LUTZ 3.4 NE (COCORAHNS)	PASCO	1.05
PALM HARBOR 3.4 SE (COCORAHNS)	PINELLAS	2.36
SOUTH PASADENA 1 NE (COCORAHNS)	PINELLAS	2.30
LAKE TARPON (SWFWMD)	PINELLAS	2.13
PINELLAS PARK (USGS)	PINELLAS	1.95
SEMINOLE 2.3 NNW (COCORAHNS)	PINELLAS	1.84
CLEARWATER 2.2 S (COCORAHNS)	PINELLAS	1.78
SAFETY HARBOR (SWFWMD)	PINELLAS	1.68
SAWGRASS LAKE (SWFWMD)	PINELLAS	1.60
REDINGTON SHORES 0.3 SE (COCORAHNS)	PINELLAS	1.57
CLEARWATER (USGS)	PINELLAS	1.22
GULFPORT 2.8 NNE (COCORAHNS)	PINELLAS	1.18
LAKE FERN (SWFWMD)	HILLSBOROUGH	2.66
PLANT CITY (COOP)	HILLSBOROUGH	2.21
BLOOMINGDALE 7.6 ESE (COCORAHNS)	HILLSBOROUGH	1.93
LUTZ 1.3 SSE (COCORAHNS)	HILLSBOROUGH	1.66
APOLLO BEACH (SWFWMD)	HILLSBOROUGH	1.51
BRANDON 2.6 SW (COCORAHNS)	HILLSBOROUGH	1.44
TAMPA 5.1 S (COCORAHNS)	HILLSBOROUGH	1.14
WIMAUMA (USGS)	HILLSBOROUGH	1.06
BLOOMINGDALE 3.2 NE (COCORAHNS)	HILLSBOROUGH	1.03
RIVERVIEW 3.4 SE (COCORAHNS)	HILLSBOROUGH	0.94
WEST PARK 0.4 S (COCORAHNS)	HILLSBOROUGH	0.90
THONOTOSASSA (USGS)	HILLSBOROUGH	0.72
CARROLLWOOD 1.7 SE (COCORAHNS)	HILLSBOROUGH	0.67
SUN CITY CENTER 0.9 W (COCORAHNS)	HILLSBOROUGH	0.63
FROSTPROOF (SWFWMD)	POLK	8.62
TICK ISLAND (SFWM)	POLK	7.86
DAVENPORT 2.2 NNW (COCORAHNS)	POLK	4.42
HAINES CITY 1 NW (COCORAHNS)	POLK	3.85
DUNDEE 0.3 NW (COCORAHNS)	POLK	3.04
EAGLE LAKE 2 WNW (COCORAHNS)	POLK	2.81
AUBURNDALE 1.7 NW (COCORAHNS)	POLK	2.59
BARTOW (PEACE RIVER - USGS)	POLK	2.55
FORT MEADE (PEACE RIVER - USGS)	POLK	2.37
LAKELAND HIGHLANDS 0.3 SE (COCORAHNS)	POLK	1.89
LAKE GIBSON (SWFWMD)	POLK	1.50
POLK CITY (SWFWMD)	POLK	1.29

MULBERRY (SWFWMD)	POLK	0.94
FOUR CORNERS (SWFWMD)	POLK	0.58
PALMETTO 1.2 W (COCORAHs)	MANATEE	2.59
PALMA SOLA (SWFWMD)	MANATEE	2.21
RUBONIA (SWFWMD)	MANATEE	1.46
ELLENTON 6.6 E (COCORAHs)	MANATEE	1.18
WARES CREEK (SWFWMD)	MANATEE	1.16
MYAKKA CITY (SWFWMD)	MANATEE	0.77
DUETTE (SWFWMD)	MANATEE	0.56
ENGLEWOOD 2 NNW (COCORAHs)	SARASOTA	3.10
VENICE 2.4 SSE (COCORAHs)	SARASOTA	2.64
VENICE 7 NE (SWFWMD)	SARASOTA	2.05
NORTH PORT (USGS)	SARASOTA	2.03
NORTH PORT 1.2 NNW (COCORAHs)	SARASOTA	1.50
LAUREL (SWFWMD)	SARASOTA	1.00
SARASOTA 2.2 WSW (COCORAHs)	SARASOTA	0.93
SOUTH GATE RIDGE 0.5 E (COCORAHs)	SARASOTA	0.92
VENICE (COOP)	SARASOTA	0.88
VENICE 3 SSE (SWFWMD)	SARASOTA	0.84
WAUCHULA 9 SW (SWFWMD)	HARDEE	3.86
ONA 2.5 E (SWFWMD)	HARDEE	3.14
ONA 10 SW (SWFWMD)	HARDEE	2.80
BOWLING GREEN (SWFWMD)	HARDEE	2.19
ARCADIA 18 SE (SWFWMD)	DESOTO	7.10
FORT OGDEN 14 E (SWFWMD)	DESOTO	6.95
ARCADIA 5 ESE (SWFWMD)	DESOTO	5.64
ARCADIA 8 WNW (SWFWMD)	DESOTO	3.60
AVON PARK 0.8 E (COCORAHs)	HIGHLANDS	9.49
LAKE PLACID 3.9 WNW (COCORAHs)	HIGHLANDS	9.33
SYLVAN SHORES 8.5 NE (COCORAHs)	HIGHLANDS	9.23
SEBRING 3.1 W (COCORAHs)	HIGHLANDS	8.88
AVON PARK BOMB RANGE (SFWMd)	HIGHLANDS	8.66
LORIDA - MCARTHUR PROP (SFWMd)	HIGHLANDS	8.59
LAKE JOSEPHINE (SWFWMD)	HIGHLANDS	8.50
LAKE JUNE IN WINTER (SWFWMD)	HIGHLANDS	7.75
SEBRING (SFWMd)	HIGHLANDS	7.63
VENUS (SFWMd)	HIGHLANDS	6.62
ARCHBOLD BIO STN (COOP)	HIGHLANDS	6.45
AVON PARK 2 W (COOP)	HIGHLANDS	6.03
LAKE PLACID 11 ESE (SFWMd)	HIGHLANDS	5.76
PUNTA GORDA 11 E (SWFWMD)	CHARLOTTE	7.27
PUNTA GORDA 8 NE (SWFWMD)	CHARLOTTE	5.80
PORT CHARLOTTE 2.9 NE (COCORAHs)	CHARLOTTE	4.71
PORT CHARLOTTE 6.4 W (COCORAHs)	CHARLOTTE	4.36
GROVE CITY (SWFWMD)	CHARLOTTE	2.77
GULF COVE (SWFWMD)	CHARLOTTE	2.12
LEHIGH ACRES 4.2 WSW (COCORAHs)	LEE	12.74
ESTERO 6 ESE (SFWMd)	LEE	10.82
NORTH FORT MYERS 3.8 NE (COCORAHs)	LEE	10.27
CORKSCREW SWAMP (SFWMd)	LEE	9.80

BONITA SPRINGS 4.7 NW (COCORAHS)	LEE	8.23
BUCKINGHAM 1.7 SE (COCORAHS)	LEE	8.14
OLGA (SFWMD)	LEE	7.12
NORTH FORT MYERS 1.4 SW (COCORAHS)	LEE	7.00
FORT MYERS 3.7 NE (COCORAHS)	LEE	6.48

WINDS VARIED ACROSS THE REGION WITH THE STRONGEST OCCURRING IN THE RAIN BANDS WHICH THEREFORE WERE IN THE SAME AREAS THAT RECEIVED THE MOST RAIN. LISTED BELOW ARE SOME OF THE SUSTAINED WINDS AND WIND GUSTS REPORTED ACROSS THE AREA AS WELL AS THE DAY THEY OCCURRED ON.

OBSERVING SITE	COUNTY	WINDS	
		SUSTAINED	GUST
		(MPH/DATE)	
..AIRPORTS:			
FORT MYERS/PAGE FIELD	LEE	39/19TH	48/19TH
FORT MYERS/SOUTHWEST INTL	LEE	38/19TH	47/19TH
PUNTA GORDA/CHARLOTTE CO	CHARLOTTE	37/19TH	47/19TH
THE VILLAGES	SUMTER	28/21ST	46/21ST
BROOKSVILLE/HERNANDO CO	HERNANDO	30/22ND	43/22ND
WINTER HAVEN/GILBERT FIELD	POLK	30/19TH	39/19TH
SARASOTA-BRADENTON INTL	MANATEE	28/22ND	37/22ND
ST PETE/ALBERT WHITTED	PINELLAS	30/19TH	36/19TH
ST PETE/CLEARWATER INTL	PINELLAS	29/21ST	36/21ST
BARTOW	POLK	26/19TH	35/19TH
MACDILL AIR FORCE BASE	HILLSBOROUGH	20/22ND	35/19TH
TAMPA INTL	HILLSBOROUGH	24/19TH	31/19TH
		& 22ND	& 22ND
TAMPA - PETER O. KNIGHT	HILLSBOROUGH	23/19TH	30/19TH
LAKELAND LINDER	POLK	21/19TH	28/19TH
			& 21ST
TAMPA - VANDENBURG	HILLSBOROUGH	20/19TH	28/19TH
..OTHER OBSERVING SITES:			
BIG CARLOS PASS (COMPS)	LEE	43/19TH	54/19TH
SEBRING (HIGHLANDS EOC)	HIGHLANDS		54/19TH
CEDAR KEY (CMAN)	LEVY	34/22ND	49/22ND
FROSTPROOF FAWN	POLK	31/19TH	49/19TH
HOMOSASSA (COMPS)	CITRUS	38/22ND	47/22ND
ARIPEKA (COMPS)	PASCO	36/22ND	45/22ND
FORT MYERS (COOPS)	LEE	30/19TH	45/19TH
C-CUT (PORTS)	TAMPA BAY	35/19TH	43/19TH
ARCADIA FAWN	DESOTO	28/19TH	42/19TH
PORT RICHEY (COMPS)	PASCO	34/22ND	41/22ND
FRED HOWARD PARK (COMPS)	PINELLAS	32/22ND	41/19TH
BROOKSVILLE FAWN	HERNANDO	26/22ND	40/22ND

WAUCHULA (HARDEE EOC)	HARDEE		40/19TH
ANNA MARIA (COMPS)	MANATEE	30/19TH	39/19TH
VENICE (CMAN)	SARASOTA	31/19TH	38/19TH
PORT MANATEE (PORTS)	MANATEE	29/19TH	37/21ST
		& 21ST	
BALM FAWN	HILLSBOROUGH	23/21ST	37/21ST
SEBRING FAWN	HIGHLANDS	23/19TH	37/19TH
CLEARWATER BEACH (COOPS)	PINELLAS	30/21ST	36/21ST
PORT OF TAMPA (PORTS)	HILLSBOROUGH	25/19TH	36/19TH
EGMONT KEY (PORTS)	TAMPA BAY	28/19TH	35/19TH
OLD PORT TAMPA (PORTS)	HILLSBOROUGH	28/21ST	35/21ST
PASCO (C14 - COMPS)	GULF - 37W OF	32/22ND	34/22ND
	HUDSON, PASCO		
NORTH PORT FAWN	SARASOTA	19/19TH	34/19TH
NAVY 2 (C10 - COMPS)	GULF - 20W OF	28/19TH	33/19TH
	NEW PASS, SARASOTA		
BERTH 223 (PORTS)	HILLSBOROUGH	24/19TH	32/19TH
ST PETERSBURG (PORTS)	PINELLAS	24/22ND	32/22ND
TAMPA CRUISE TERMINAL (PORTS)	HILLSBOROUGH	22/19TH	31/19TH
BRONSON FAWN	LEVY	18/22ND	31/22ND
SEABULK (PORTS)	HILLSBOROUGH	21/19TH	30/21ST
		& 21ST	
LAKE ALFRED FAWN	POLK	18/19TH	30/19TH
ONA FAWN	HARDEE	17/21ST	28/21ST
DOVER FAWN	HILLSBOROUGH	13/21ST	24/21ST

FOR MORE CLIMATE INFORMATION VISIT OUR WEB SITE AT THE FOLLOWING
LINK: [HTTP://WEATHER.GOV/TAMPABAY](http://WEATHER.GOV/TAMPABAY) AND THEN CLICK ON THE LOCAL
LINK IN THE CLIMATE SECTION ON THE LEFT SIDE OF THE PAGE.

\$\$

PRC/JC