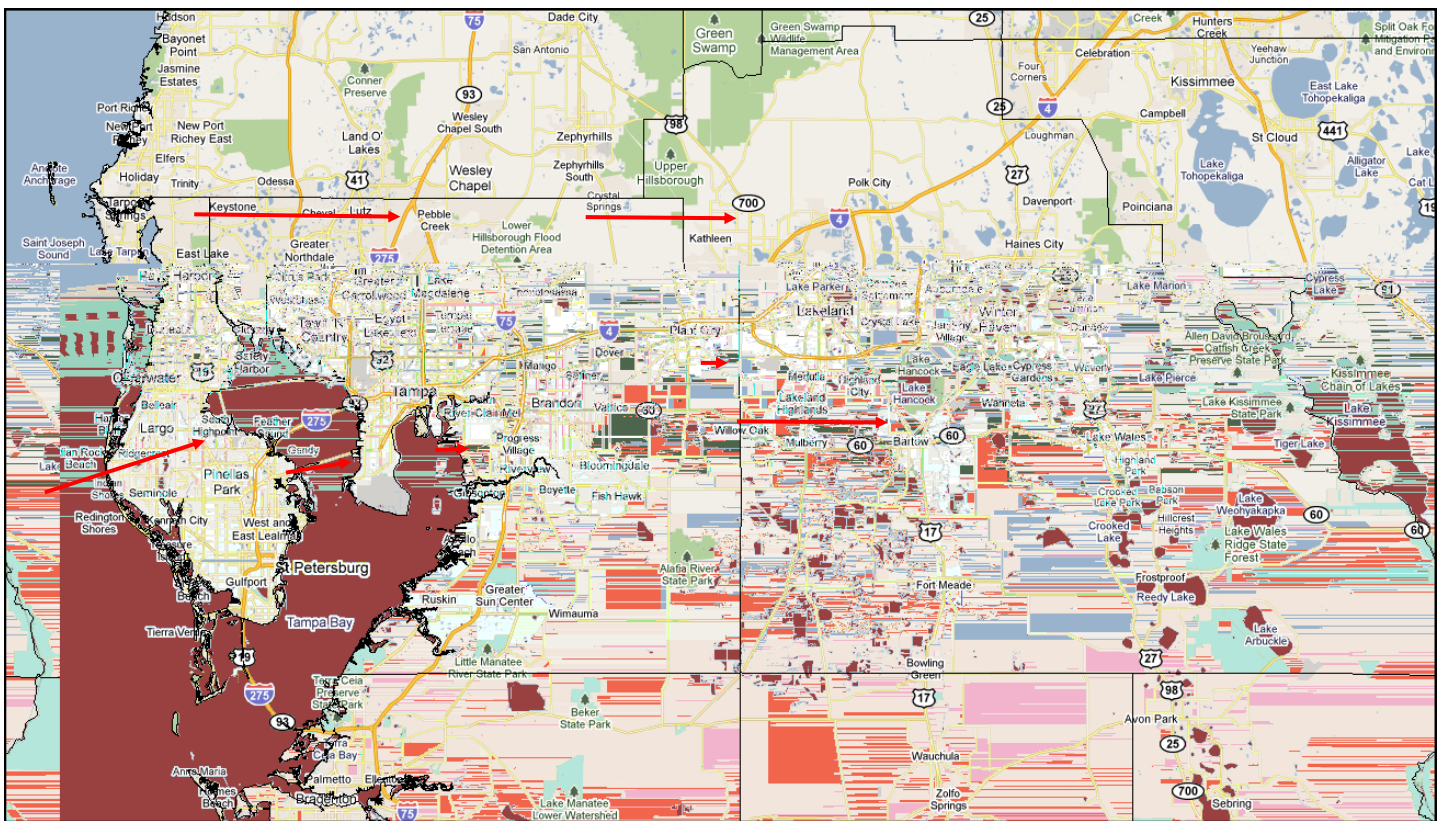


Storms Rip Through Tampa Bay Region

March went out like a lion in the Tampa Bay Region with numerous tornadoes, downburst wind events, large hail and flooding. The map below shows the general locations of reported tornadoes and their paths. The tornadoes were not on the ground the entire time. More detailed reports can be found on the following pages.



9 Tornado Reports

1. 8:50 AM, Lutz area
2. 9:14 AM, 5 miles north of Kathleen
3. 11:05 AM, Indian Rocks Beach
4. 11:10 AM, Largo (unconfirmed but probable)
5. 11:19 AM, near the Saint Petersburg/Clearwater International Airport
6. 11:30 AM, Interbay Boulevard in Tampa just north of MacDill Air Force Base
7. 11:40 AM, Riverview
8. 12:00 PM, Lakeland Airport
9. 12:10 PM, 1 mile north of Bartow



PRELIMINARY Survey for Pinellas County Tornado and Downburst Wind Event

Date: March 31, 2011

Tornado at Position 1

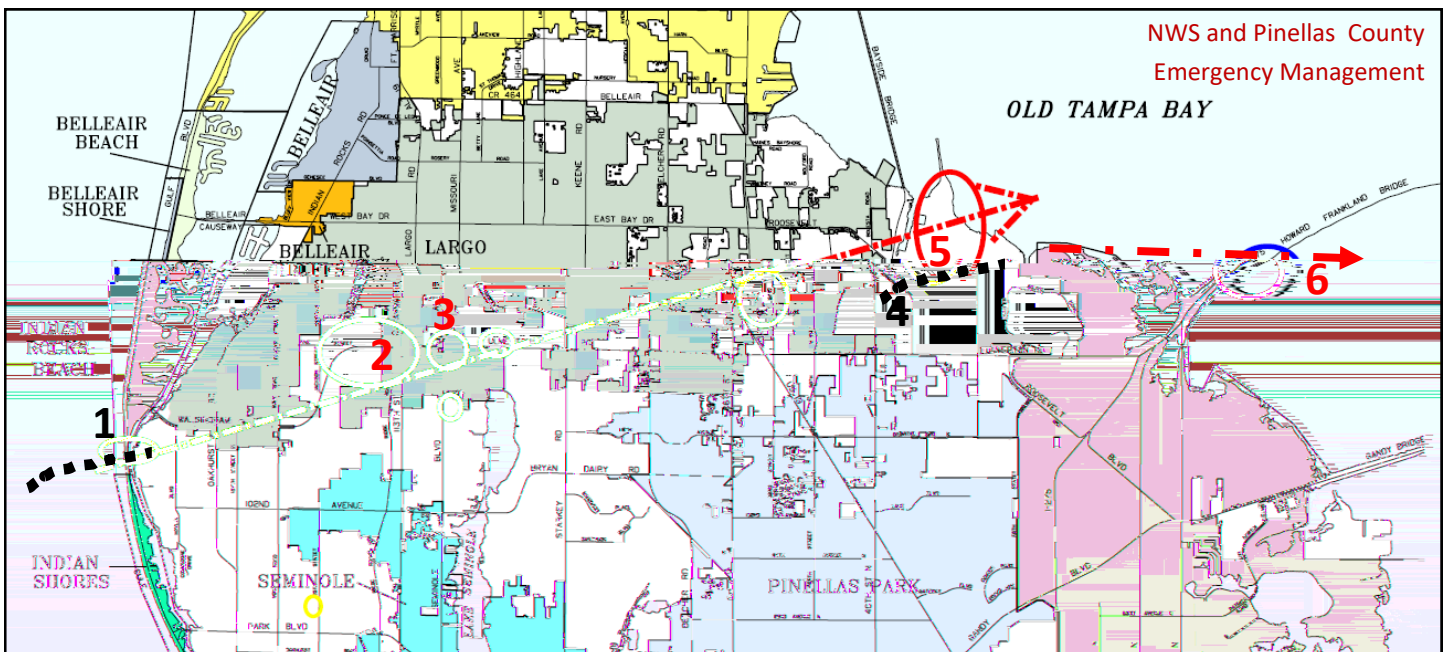
- Tornado Rating: EF-1 (around 90 MPH)
- Begin: 11:04 AM, 27.872° latitude, -82.851° longitude
- End: 11:05 AM, 27.870° latitude, -82.839° longitude
- Path Length Over Land: 0.5 miles, lifted over intercostal
- Path Width: 30 yards

Tornado at Position 4

- Tornado Rating: EF-1 (around 105 MPH)
- Begin: 11:19 AM, 27.897° latitude, -82.698° longitude
- End: 11:21 AM, 27.905° latitude, -82.677° longitude
- Path Length Over Land: 1.1 mile
- Path Width: 60 yards

Downburst Path:

- Begin: 11:05 AM, 27.872° latitude, -82.851 longitude
- End: 11:25 AM, 27.905° latitude, -82.636 longitude
- Length: 10.43 miles
- Max Wind Gust Recorded: 70 MPH at home weather station in Indian Rocks Reach
- Max Downburst Width: 1 mile

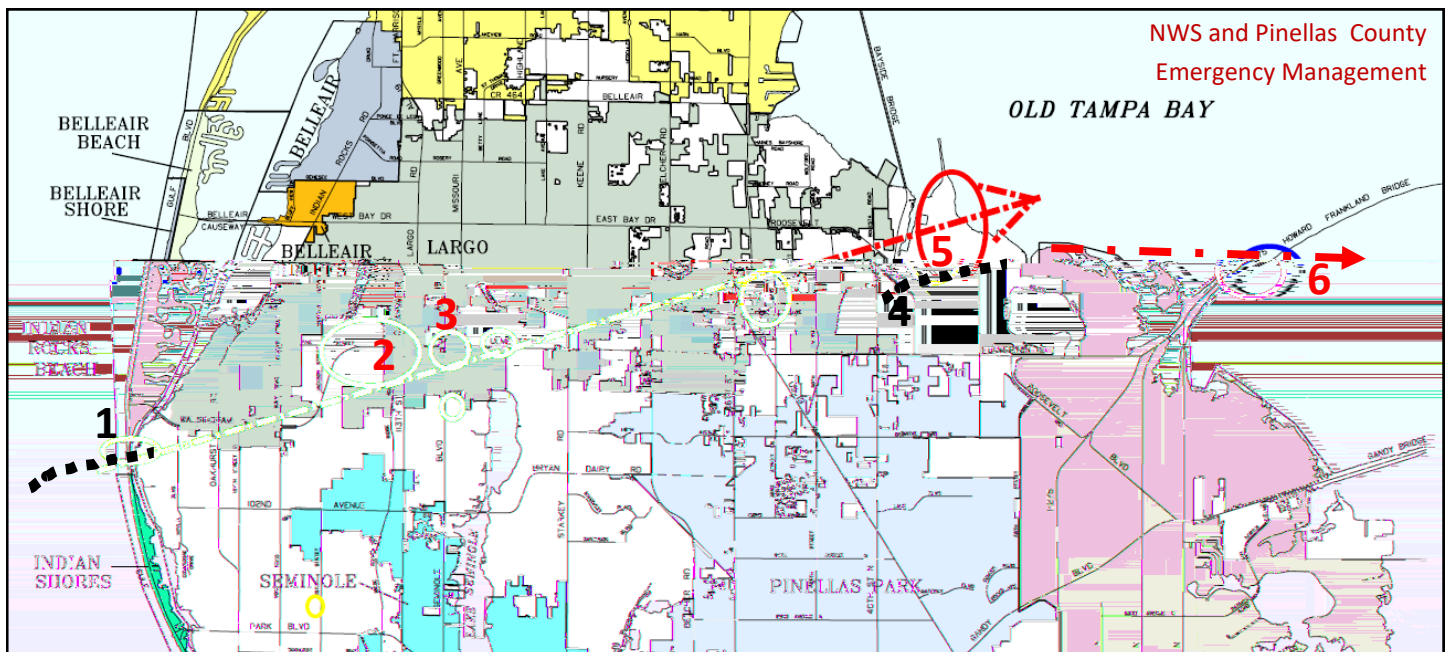


PRELIMINARY Survey for Pinellas County Tornado and Downburst Wind Event

Tornado damage at Position 1



Home not hit directly by tornado (notice right side of photo, tree still standing). Tornado snapped nearby trees, power poles and electrical lines. Tornado lifted over the intercostal as the mangroves showed no damage on other side of water.

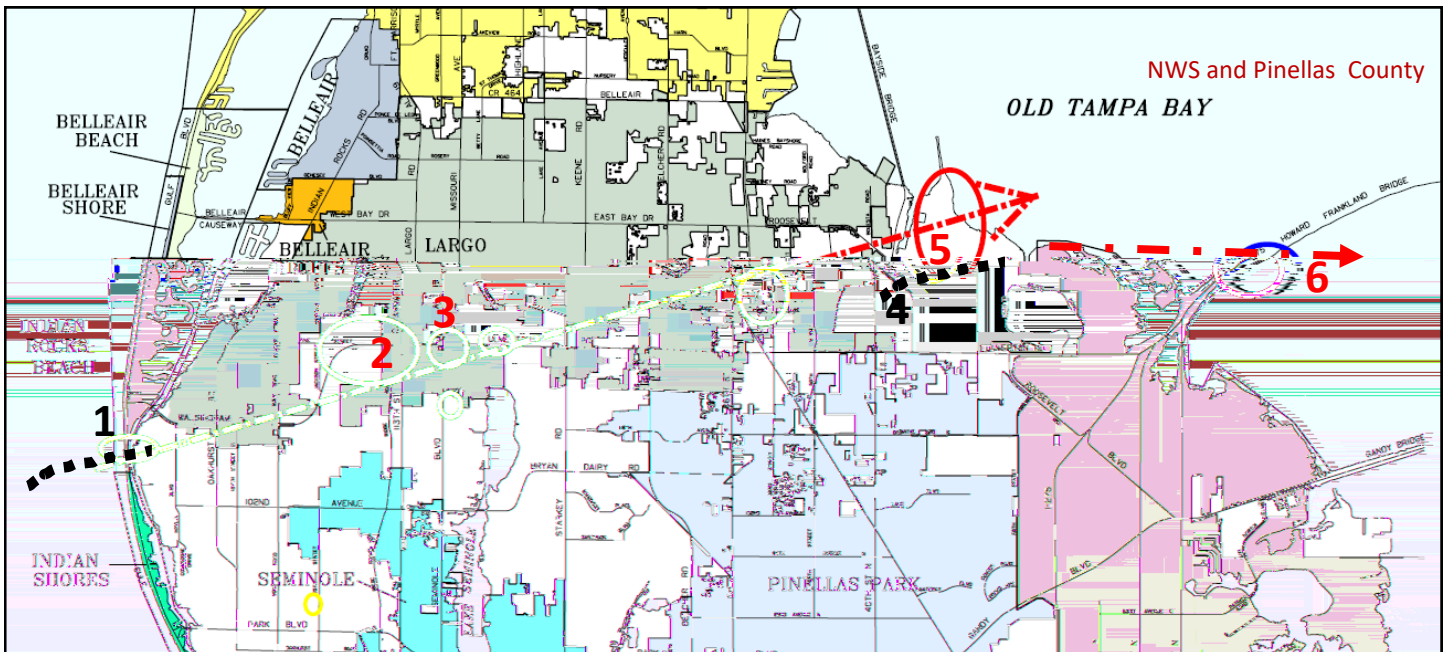


PRELIMINARY Survey for Pinellas County Tornado and Downburst Wind Event



Trees snapped and numerous mobile homes damaged in Largo at Position 2. This was straight line wind damage with speeds estimated at 65 MPH. Damage to a metal frame building suggests some winds approached 90 MPH.

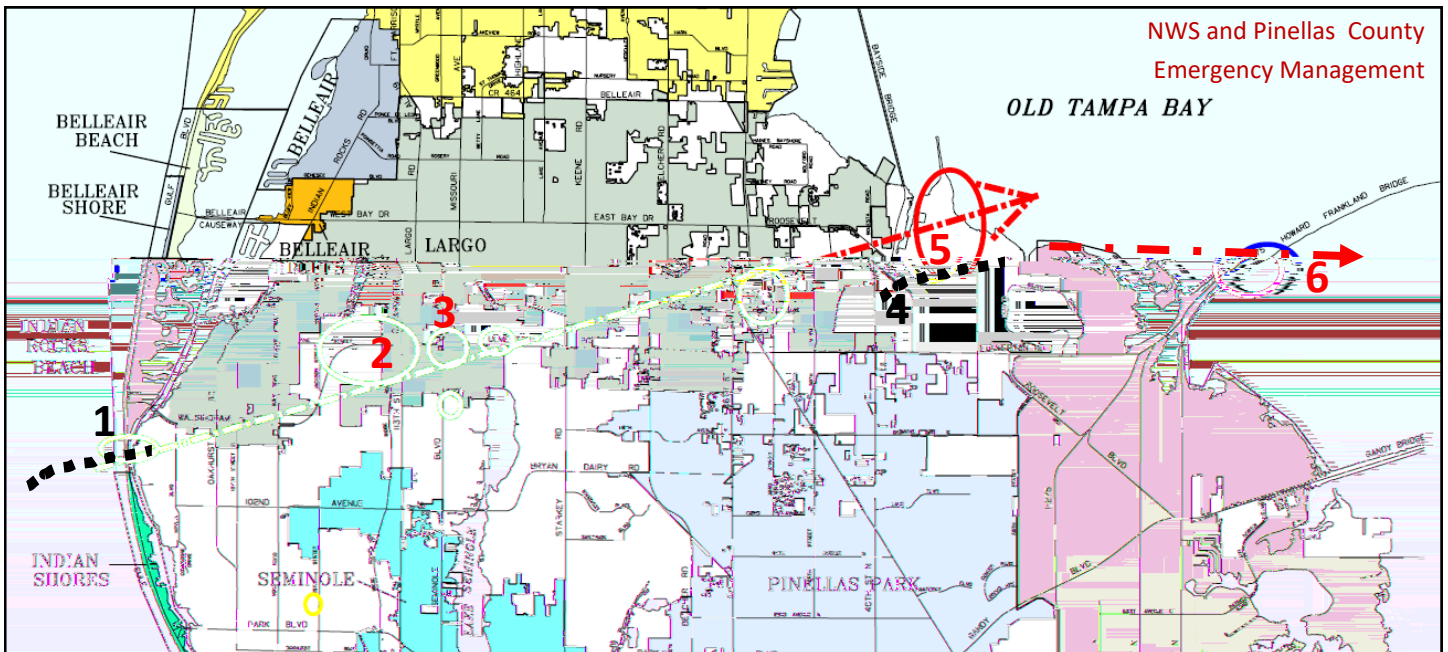
Tower collapse at Position 3. Winds near the ground estimated at 60 MPH while winds at top of tower estimated at over 110 MPH.



PRELIMINARY Survey for Pinellas County Tornado and Downburst Wind Event



Tornado at **Position 4**: Power poles and lines snapped with numerous trees down in area. Downburst wind at **Position 5**: Damage to a small metal hanger at the St Pete/Clearwater International Airport with wind estimated at 60 MPH. The weather instrument on other side of airport recorded 55 MPH winds at 11:21 AM. A tractor trailer overturned on the Interstate 275 at **Position 6**.





NOAA - National Weather Service

Tampa Bay Area

2525 14th Avenue SE, Ruskin, Florida 33570

813-645-2323

<http://weather.gov/tampa>

Preliminary Survey for Central Hillsborough Tornado

Date: 31 March 2011

Start time: 11:24 AM

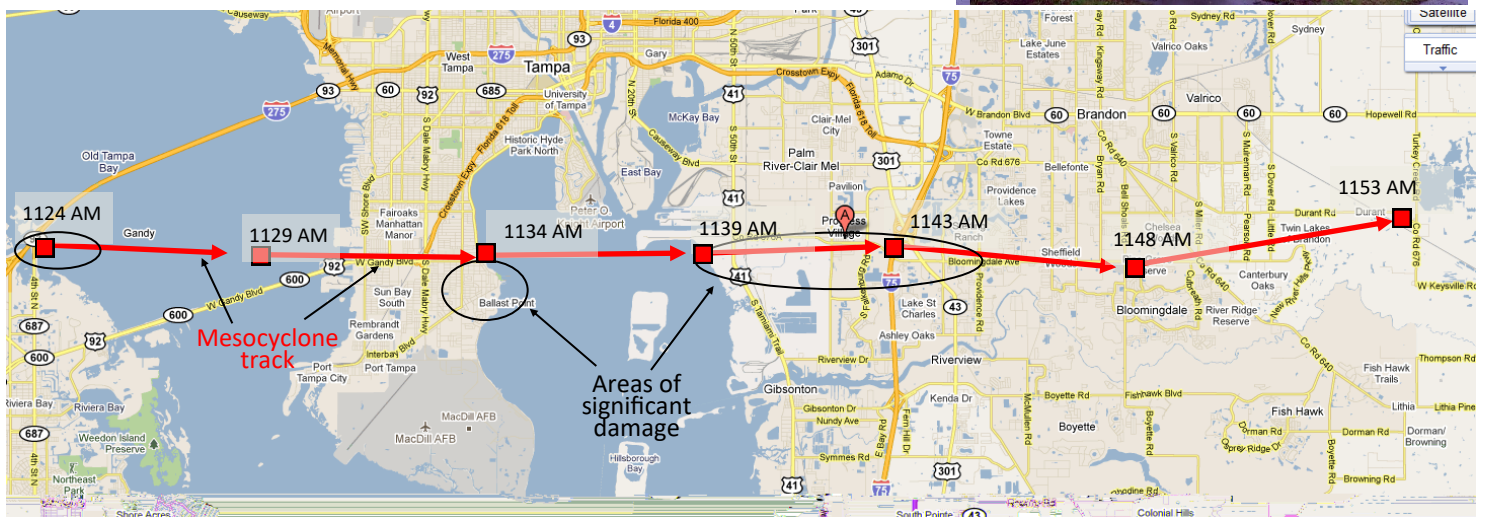
End time: 11:53 AM

Strength: EF-1 maximum

Width: 250 yards maximum

Locations:

- 11:25 AM, 27.904, -82.625, Near west end of Howard Franklin Causeway.
- 11:29 AM, 27.900 -82.562, Over Old Tampa Bay circulation less distinct.
- 11:34 AM, 27.894 -82.486, Broad circulation over Interbay peninsula near Gandy Blvd and Bayshore Blvd.
- 11:34 AM, 27.891 -82.469, small more distinct circulation over Hillsborough Bay.
- 11:39 AM, 27.901 -82.396, Over Madison Avenue east of HWY 41 circulation distinct.
 - Along Madison Ave - EF1 damage at Circle K store, flatbed 18 wheel trailer moved into ditch, side of warehouse blown out, tree and billboard damage, Major powerline support damaged, shopping center strip with minor damage.
 - Progress Village housing area north - Damage to sheds and porches along Madison Ave.
 - Progress Village housing area south - Widespread EF1 roof damage and exterior damage. Damage to oak tree tops and weaker trees.
 - Near intersections of I-75, HWY 301 and Progress Blvd -trees, powerlines, signs, lightpoles down, fruit stand destroyed.
- 11:43 AM, 27.900 -82.342, Broad circulation over I-75 and HWY 301 interchange.
 - Bloomingdale Ave to Providence Road – Tree damage.
- 11:48 AM, 27.890 -82.274, Moderate circulation just south of Bloomingdale Ave.
- 11:53 AM, 27.901 -82.183, Weak circulation near intersection of Durant Rd and Turkey Creek Rd.





NOAA - National Weather Service

Tampa Bay Area

2525 14th Avenue SE, Ruskin, Florida 33570

813-645-2323

<http://weather.gov/tampa>

PRELIMINARY Survey for Lakeland EF-1 Tornado

Date: March 31, 2011

Time: 12:00 PM to 12:05 PM EST

Strength: EF-1 (estimate 95 mph)

Location: Lakeland Linder Regional Airport, Lakeland FL

Began: 27.986 Lat, -82.022 Lon

End: 27.988 Lat, -82.011 Lon

Path Length: 0.6 miles

Path Width: 30 - 40 yards



- 7 people injured during the Sun N Fun Festival activities.
- 50 planes reported as damaged or destroyed.
- 5 campsites destroyed. Many other camp sites had tents blown away or collapsed.
- Light towers and other ground equipment was damaged or destroyed.
- No damage to hangars or main airport structures was reported or observed.
- The survey confirmed the impact of 70 to 75 mph downburst thunderstorm severe straight-line winds with a brief tornado impact at the west end of the runway around 12:05 pm EST.



Path of the tornado across Lakeland Linder Regional Airport.



NOAA - National Weather Service

Tampa Bay Area

2525 14th Avenue SE, Ruskin, Florida 33570

813-645-2323

<http://weather.gov/tampa>



Planes tossed around the Tarmac of Lakeland Linder Regional Airport.



NOAA - National Weather Service

Tampa Bay Area

2525 14th Avenue SE, Ruskin, Florida 33570

813-645-2323

<http://weather.gov/tampa>



Several planes and campsites were badly mangled by the severe thunderstorm straight-line winds and EF-1 tornado that moved across the Sun N Fun fields at Lakeland Linder Regional Airport.