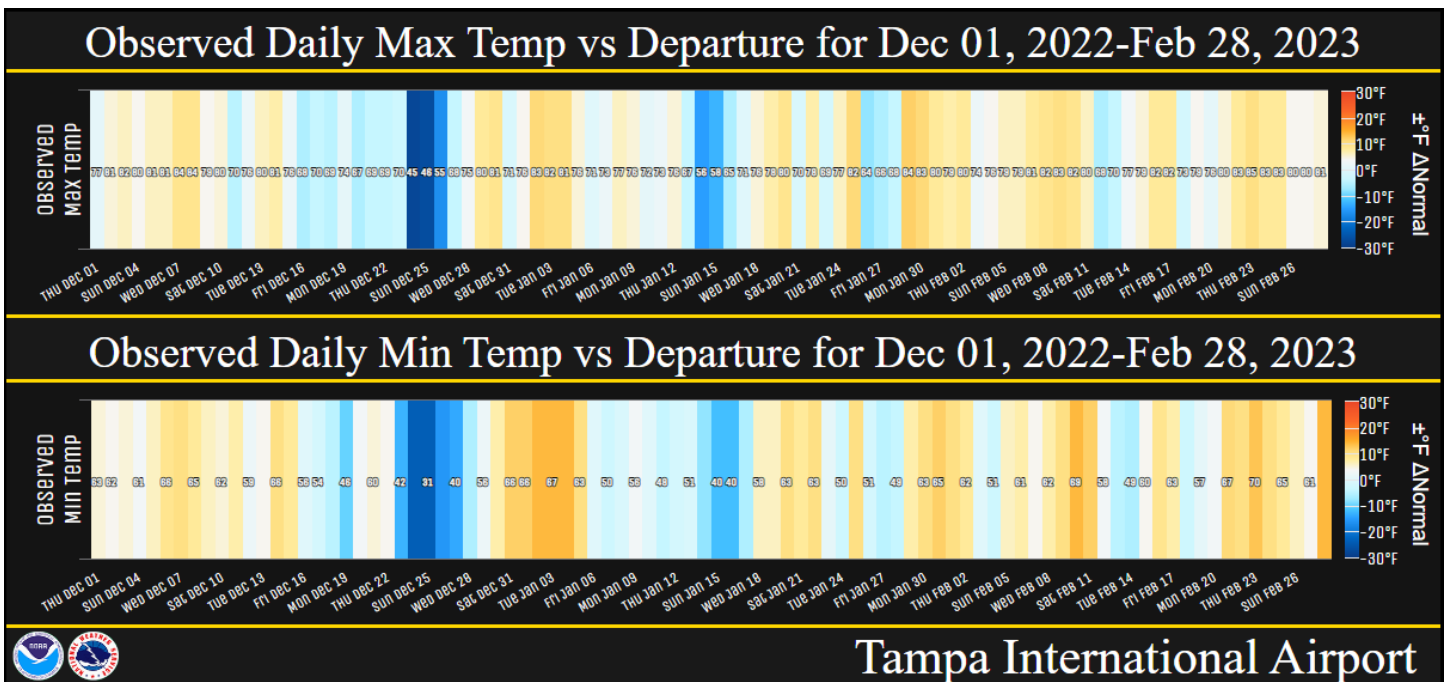


February 2023 and Winter 2022-23 Climate Summary

For the third winter in a row the ENSO (El Niño Southern Oscillation) was in a La Niña phase which usually means that we'll see overall temperatures slightly above normal for the season while rainfall will be below normal. This overall pattern was accurate for West Central and Southwest Florida. We saw some large swings in the temperatures during the winter with the coldest days on December 24th and December 25th where temperatures were 20 to 30 degrees below normal. February ended up about 4 to 6 degrees above normal while winter (Dec/Jan/Feb) was 1 to nearly 4 degrees above normal

The various ups and downs in the temperatures this past winter can be seen in the observed daily maximum and minimum temperatures for Tampa in the graphic below. The orange areas are the days with well above normal temperatures while the blue are days with well below normal temperatures.



Below are temperature tables for February and the Winter (Dec/Jan/Feb) at sites available at this time.

FEBRUARY TEMPERATURE RANKINGS (°F)

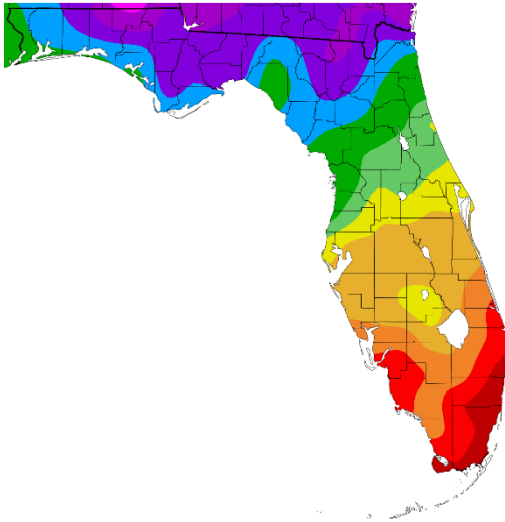
Location	February 2023 Rank	Avg Temp	Normal Feb Temp	Dep fm Normal	Records Began
Fort Myers Area	2nd Warmest	73.6°	67.3°	+6.3°	Jan 1902
Plant City	3rd Warmest	71.4°	65.3°	+6.1°	Sep 1892
Punta Gorda Area	5th Warmest (tie)	70.8°	65.5°	+5.3°	Jul 1914
Lakeland Area	4th Warmest	70.7°	65.0°	+5.7°	Jan 1915
Venice	3rd Warmest	70.5°	64.6°	+5.9°	May 1955
St Petersburg Area	4th Warmest	70.4°	64.9°	+5.5°	Aug 1914
Tampa Area	4th Warmest	70.3°	64.7°	+5.6°	Apr 1890
Bartow	4th Warmest (tie)	69.7°	64.0°	+5.7°	Jun 1892
Winter Haven Area	6th Warmest	69.7°	65.1°	+4.6°	Mar 1941
Sarasota-Bradenton Area	5th Warmest (tie)	69.4°	64.8°	+4.6°	Jan 1911
Wauchula 2 N	10th Warmest	69.0°	62.9°	+6.1°	Jan 1933
Archbold Bio Stn	7th Warmest	68.5°	64.2°	+4.3°	Jan 1969
Myakka River State Pk	11th Warmest	68.4°	65.0°	+3.4°	Mar 1956
Tarpon Springs	11th Warmest (tie)	67.3°	62.9°	+4.4°	Jan 1892
St. Leo	17th Warmest (tie)	66.8°	62.6°	+4.2°	Apr 1895
Brooksville Area	15th Warmest (tie)	66.5°	60.6°	+5.9°	Jan 1892
Inverness 3 SE	7th Warmest (tie)	65.8°	58.9°	+6.9°	Jul 1948
Chiefland 5 ESE	3rd Warmest	64.7°	58.5°	+6.2°	Jul 1956

WINTER (DEC/JAN/FEB) TEMPERATURE RANKINGS (°F) :

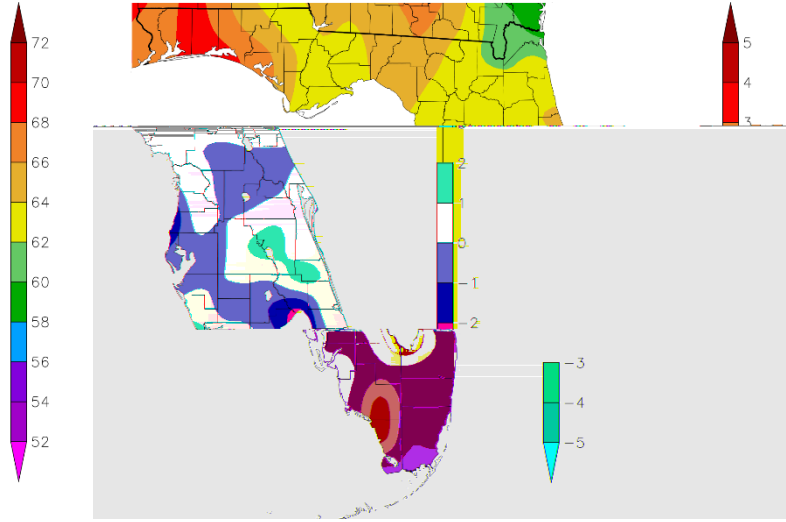
Location	Winter 2022-23 Rank	Avg Temp	Normal Temp	Dep fm Normal	Records Began
Fort Myers - Page Field	3rd Warmest	70.3°	66.4°	+3.9°	Jan 1902
Punta Gorda Area	9th Warmest	67.5°	64.8°	+2.7°	Jul 1914
Venice	6th Warmest	67.1°	63.8°	+3.3°	May 1955
Plant City	4th Warmest	67.0°	64.2°	+2.8°	Sep 1892
Winter Haven Area	7th Warmest (tie)	66.7°	64.0°	+2.7°	Mar 1941
Lakeland Area	7th Warmest	66.6°	64.0°	+2.6°	Jan 1915
Tampa Area	9th Warmest	66.4°	63.9°	+2.5°	Apr 1890
St Petersburg Area	18th Warmest	66.3°	64.1°	+2.2°	Aug 1914
Sarasota-Bradenton Area	9th Warmest	66.2°	64.1°	+2.1°	Jan 1911
Bartow	11th Warmest (tie)	65.6°	63.0°	+2.6°	Jun 1892
Archbold Bio Stn	5th Warmest (tie)	65.4°	63.4°	+2.0°	Jan 1969
Myakka River State Pk	17th Warmest (tie)	65.0°	64.0°	+1.0°	Mar 1956
Wauchula 2 N	16th Warmest	64.8°	62.0°	+2.8°	Jan 1933
St. Leo	29th Warmest (tie)	63.3°	61.5°	+1.8°	Apr 1895
Tarpon Springs	42nd Warmest (tie)	62.9°	61.8°	+1.1°	Jan 1892
Brooksville Area	31st Warmest (tie)	62.3°	59.5°	+2.8°	Jan 1892
Inverness 3 SE	11th Warmest	61.6°	58.9°	+2.7°	Jul 1948
Chiefland 5 ESE	7th Warmest	60.5°	57.1°	+3.4°	Jul 1956

On the following pages are graphics that depict the monthly/season average temperature and departure from normal temperature (based on the 1991-2020 Normals) across the area.

Temperature (F)
12/1/2022 - 12/31/2022

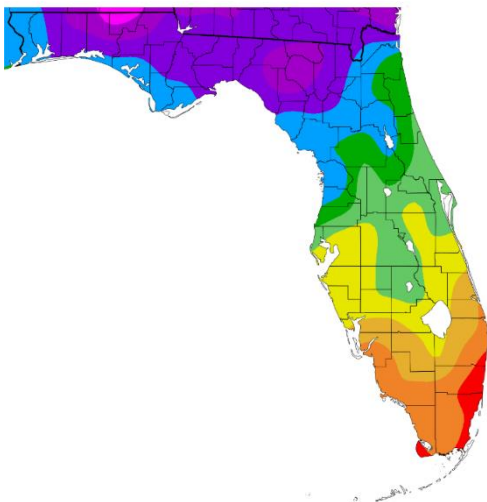


Departure from Normal Temperature (F)
12/1/2022 - 12/31/2022

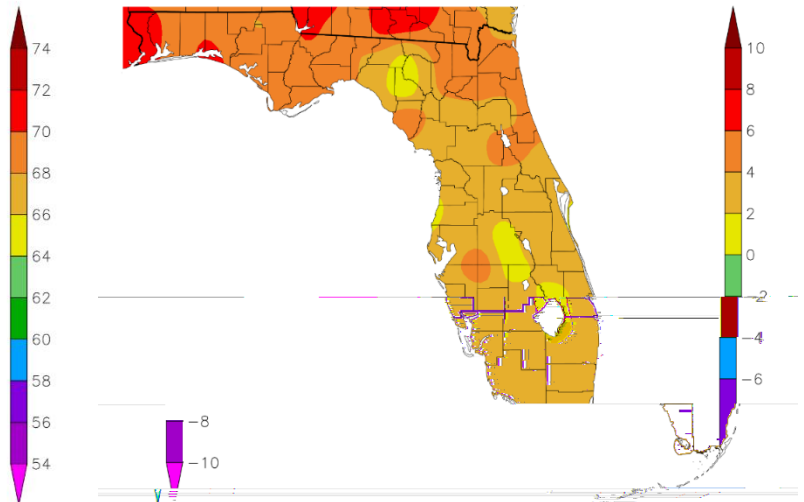


December 2022

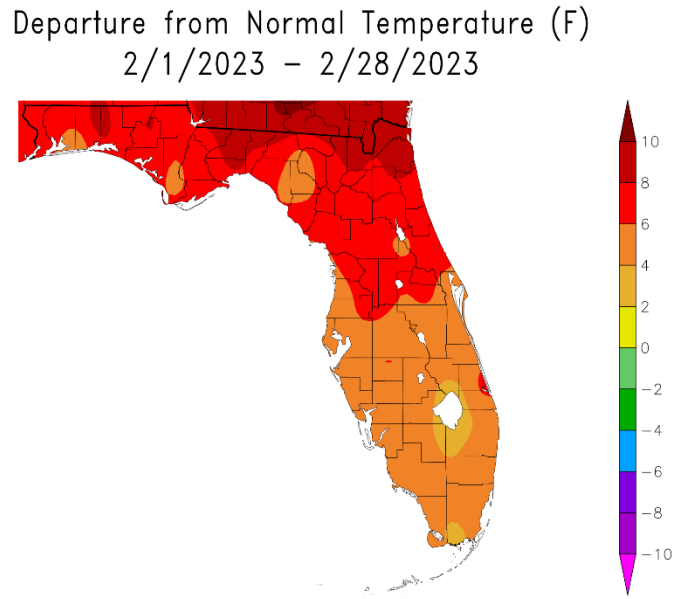
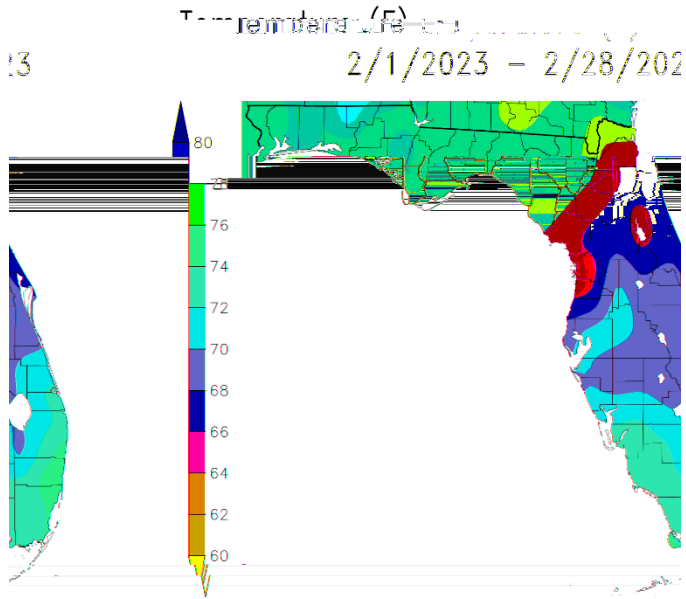
Temperature (F)
1/1/2023 - 1/31/2023



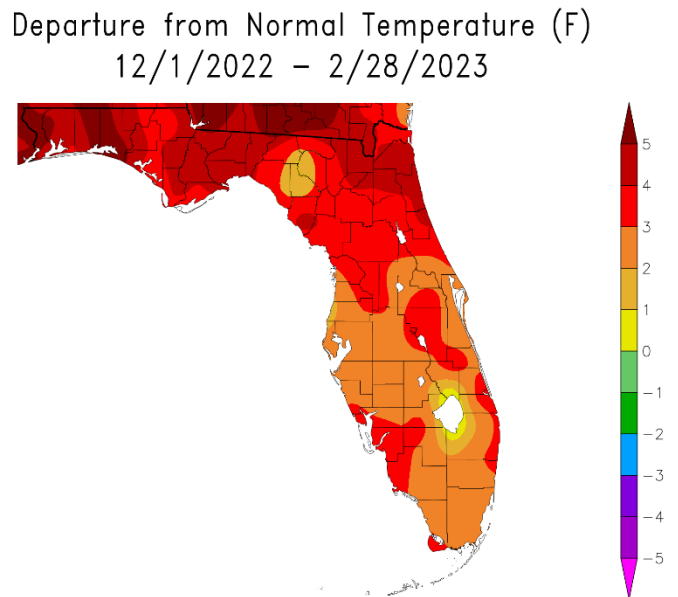
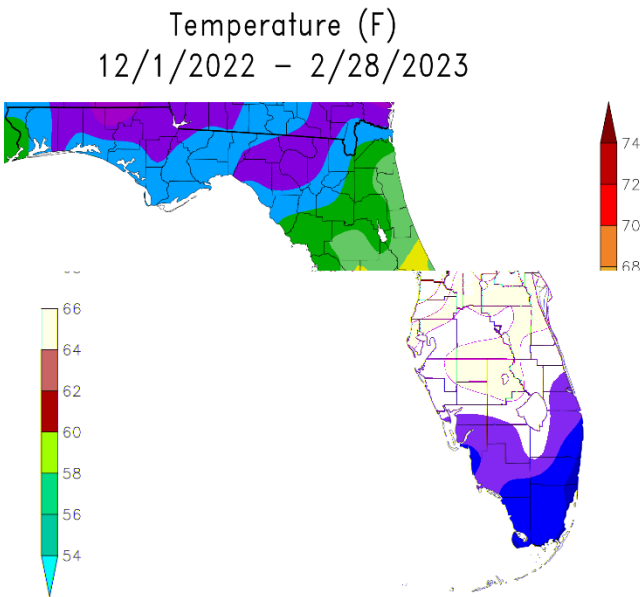
Departure from Normal Temperature (F)
1/1/2023 - 1/31/2023



January 2023



February 2023



Winter (Dec/Jan/Feb) 2022-23

Graphics Source: NOAA Regional Climate Centers

As for rainfall it was a rather dry February with well below normal amounts across most of the region, and for the Winter 2022-2023 the entire region is below normal.

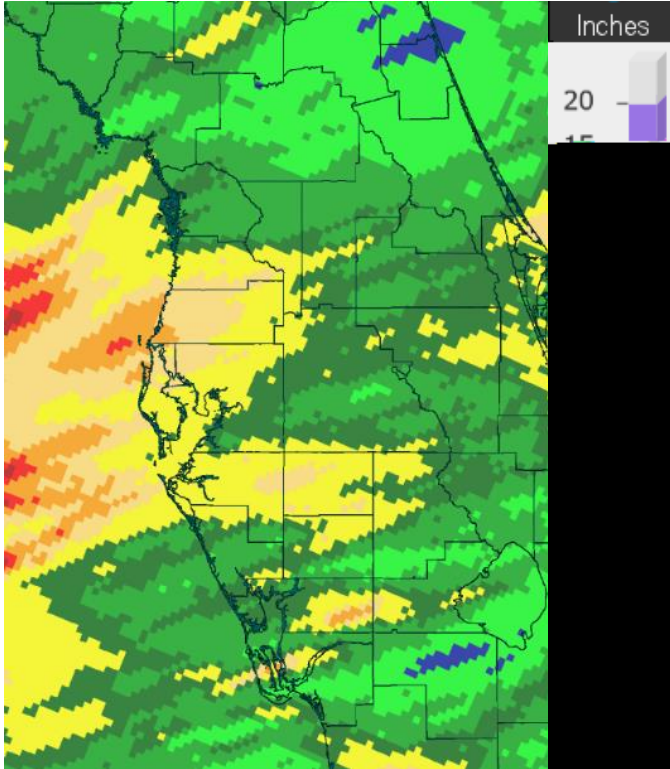
FEBRUARY RAINFALL (inches):

Location	February 2023 Rank	Rain Total	Normal Feb Rain	Dep fm Normal	Records Began
Chiefland 5 ESE	33rd Driest	2.96	3.25	-0.29	Jul 1956
Inverness 3 SE	27th Driest	2.31	2.69	-0.38	Jul 1948
Plant City	20th Driest	0.70	2.33	-1.63	Sep 1892
Tarpon Springs	11th Driest	0.65	2.51	-1.86	Jan 1892
Winter Haven Area	8th Driest	0.57	2.44	-1.87	Mar 1941
Archbold Bio Stn	9th Driest (tie)	0.54	2.25	-1.71	Jan 1969
Brooksville Area	4th Driest	0.48	2.57	-2.09	Jan 1892
Lakeland Area	9th Driest	0.46	2.33	-1.87	Jan 1915
Wauchula 2 N	9th Driest	0.46	2.18	-1.72	Jan 1933
Tampa Area	11th Driest	0.46	2.62	-2.16	Apr 1890
Bartow	8th Driest	0.32	2.10	-1.78	Jun 1892
Myakka River State Pk	6th Driest	0.30	2.44	-2.14	Sep 1943
St. Leo	3rd Driest	0.24	2.38	-2.14	Apr 1895
St. Petersburg Area	3rd Driest	0.19	2.02	-1.83	Aug 1914
Venice	4th Driest	0.16	2.00	-1.84	May 1955
Punta Gorda Area	7th Driest	0.16	2.47	-2.31	May 1914
Sarasota-Bradenton Area	5th Driest (tie)	0.15	1.92	-1.77	Jan 1911
Fort Myers Area	5th Driest (tie)	0.07	1.78	-1.71	Jan 1902

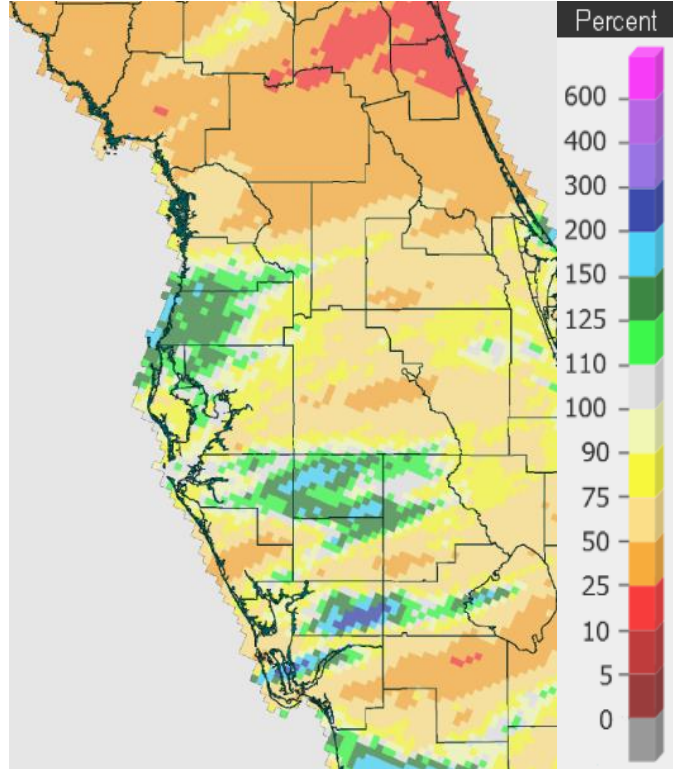
WINTER (DEC/JAN/FEB) RAINFALL (inches):

Location	Winter 2022-23 Rank	Rain Total	Normal Rain	Dep fm Normal	Records Began
Chiefland 5 ESE	10th Driest	5.75	10.11	-4.36	Jul 1956
Tarpon Springs	39th Driest	5.68	8.28	-2.60	Jan 1892
St. Leo	38th Driest	5.17	7.97	-2.80	Apr 1895
Wauchula 2 N	28th Driest	4.84	6.60	-1.76	Jan 1933
Inverness 3 SE	13th Driest	4.58	8.14	-3.56	Jul 1948
Tampa Area	35th Driest	4.36	7.83	-3.47	Apr 1890
Sarasota-Bradenton Area	28th Driest	4.21	7.04	-2.83	Jan 1911
Plant City	21st Driest	3.77	7.87	-4.10	Sep 1892
Winter Haven Area	12th Driest	3.60	7.61	-4.01	Mar 1941
Lakeland Area	16th Driest	3.49	7.93	-4.44	Jan 1915
St. Petersburg Area	17th Driest	3.48	6.93	-3.45	Aug 1914
Bartow	18th Driest	3.17	6.92	-3.75	Jun 1892
Myakka River State Pk	9th Driest	2.50	7.80	-5.30	Sep 1943
Fort Myers Area	23rd Driest	2.50	6.11	-3.61	Jan 1902
Venice	6th Driest	2.48	6.99	-4.51	May 1955
Archbold Bio Stn	5th Driest	2.22	6.46	-4.24	Jan 1969

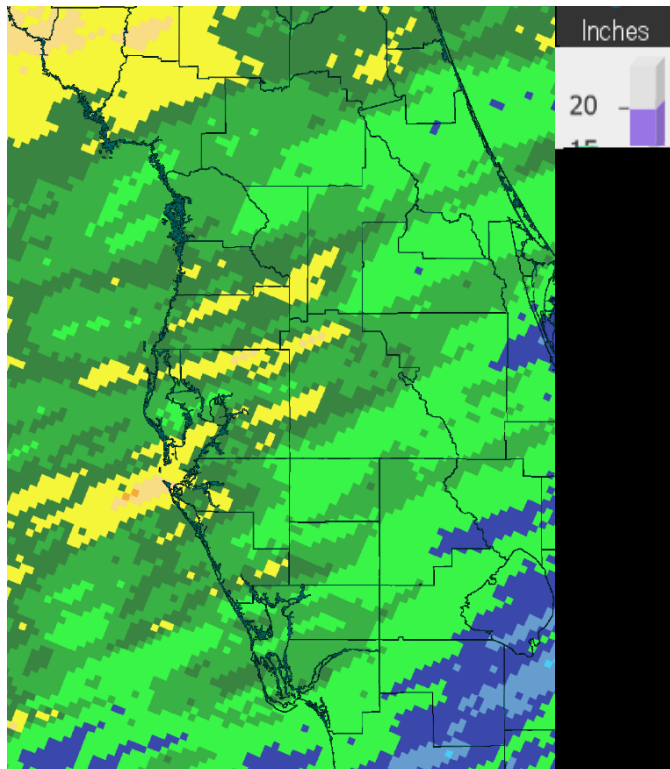
On the following pages are graphics that depict the monthly/season total rainfall and percent of normal rainfall (based on the 1991-2020 Normals).



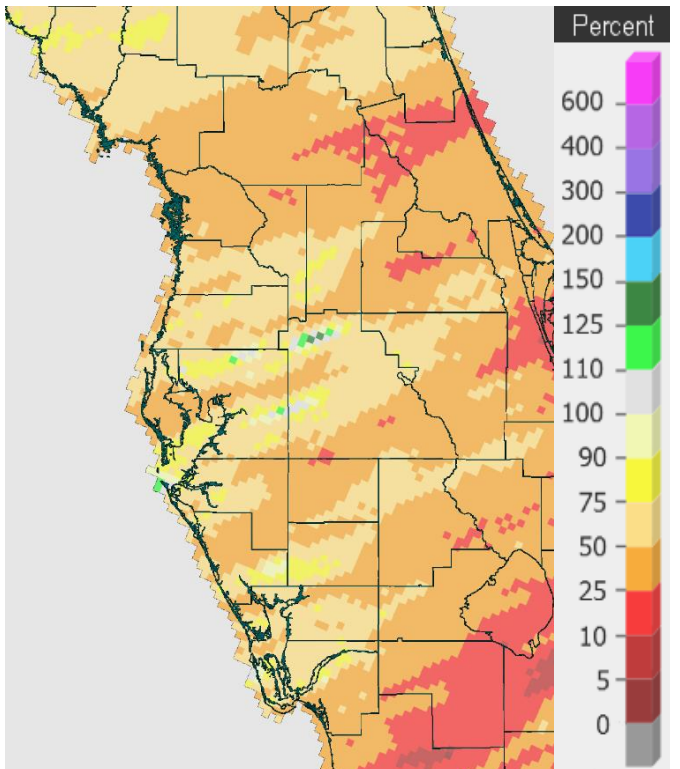
Rainfall December 2022



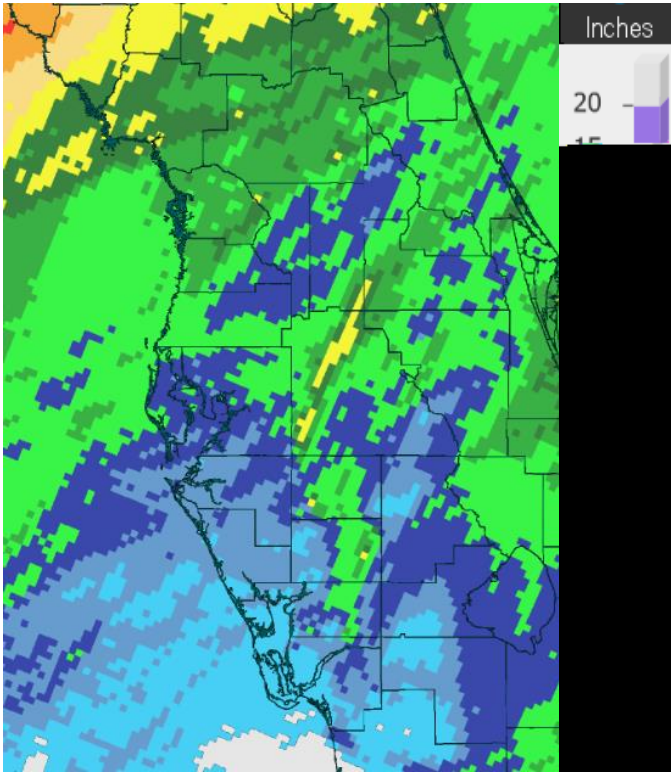
Percent of Normal



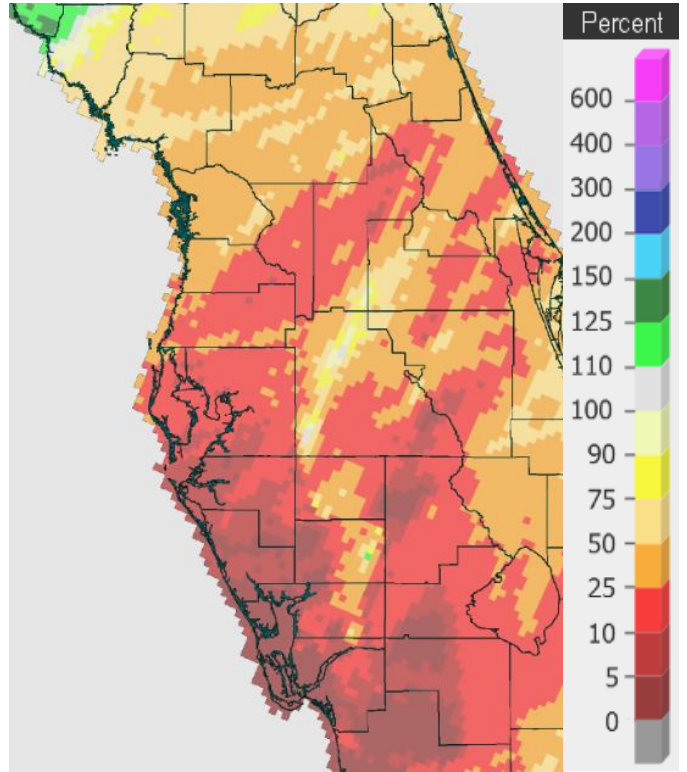
Rainfall January 2023



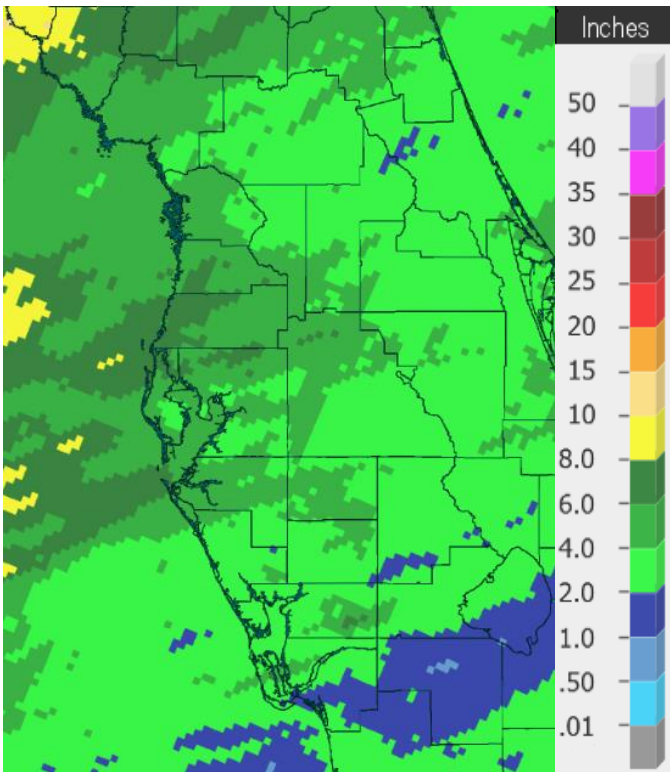
Percent of Normal



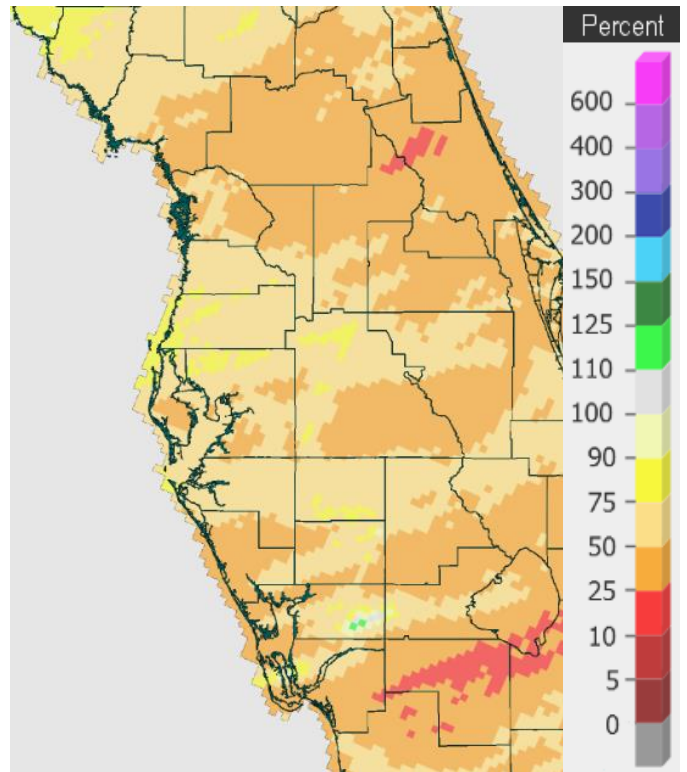
Rainfall February 2023



Percent of Normal



Rainfall Dec 1 - Feb 28



Percent of Normal

Below are tables of the Top Ten Warmest, Coolest, Wettest, and Driest Februarys and Winters (December/January/February) at some official NWS locations, which include the average/total for this month/season where available, and the 1991-2020 Normal (average) temperature and rainfall.

CHIEFLAND 5 ESE (records began in July 1956):

Warmest Februarys		Coolest Februarys		Wettest Februarys		Driest Februarys	
1	68.8 in 2018	1	48.4 in 1958	1	15.20 in 1998	1	0.12 in 1962
2	65.3 in 2019	2	49.3 in 2010	2	9.06 in 2004	2	0.72 in 1994
3	64.7 in 2023		49.3 in 1968	3	8.73 in 1970	3	0.77 in 1980
4	64.2 in 1990	4	50.0 in 1978	4	7.75 in 1964	4	0.78 in 1989
5	64.1 in 1959	5	52.3 in 1963	5	7.42 in 1966	5	0.82 in 1997
6	64.0 in 2017	6	52.4 in 1964	6	7.05 in 1965	6	0.98 in 2022
	64.0 in 1982	7	53.0 in 1969	7	6.55 in 1993		0.98 in 1996
8	63.3 in 1975	8	53.1 in 1980	8	6.26 in 1967	8	1.01 in 1991
	63.3 in 1957	9	53.3 in 1977	9	6.10 in 1963	9	1.06 in 2000
10	63.1 in 2001	10	53.5 in 2009	10	6.01 in 1978	10	1.21 in 2017
				
				33	2.96 in 2023	33	2.96 in 2023

Normal Temperature for February at CHIF1 = 58.5°

Normal Rainfall for February at CHIF1 = 3.25 in.

Warmest Winters		Coolest Winters		Wettest Winters		Driest Winters	
1	62.0 in 1956-57	1	50.8 in 1957-58	1	30.55 in 1997-98	1	2.18 in 1956-57
2	61.7 in 1971-72	2	51.7 in 1977-78	2	26.40 in 1963-64	2	3.82 in 2021-22
3	61.5 in 1998-99		51.7 in 1963-64	3	20.46 in 1969-70	3	3.86 in 2000-01
4	61.1 in 1990-91	4	52.0 in 1976-77	4	19.65 in 1964-65	4	4.21 in 1961-62
5	60.9 in 2019-20	5	52.1 in 2009-10	5	17.59 in 1977-78	5	5.19 in 2016-17
6	60.8 in 1973-74	6	52.7 in 2010-11	6	17.58 in 1978-79		5.19 in 1980-81
7	60.5 in 2022-23		52.7 in 1980-81	7	16.42 in 1965-66	7	5.26 in 2011-12
8	60.2 in 2017-18	8	52.9 in 1969-70	8	16.37 in 2018-19	8	5.42 in 2004-05
	60.2 in 1974-75	9	53.2 in 1968-69	9	16.27 in 2005-06	9	5.49 in 1984-85
10	59.6 in 1988-89	10	53.7 in 2002-03	10	15.89 in 2013-14	10	5.75 in 2022-23
	59.6 in 1964-65		53.7 in 1962-63				

Normal Temperature for Winter (Dec/Jan/Feb) at CHIF1 = 57.1°

Normal Rainfall for Winter (Dec/Jan/Feb) at CHIF1 = 10.11 in.

INVERNESS 3 SE (records began in July 1948):

Warmest Februarys	Coolest Februarys	Wettest Februarys	Driest Februarys
1 69.4 in 1949	1 49.7 in 2010	1 10.21 in 1952	1 0.46 in 1999
2 68.9 in 2018	2 50.6 in 1978	2 6.62 in 1998	2 0.52 in 1985
3 68.1 in 1959	3 51.1 in 1958	3 6.45 in 1960	3 0.58 in 1976
4 66.9 in 1957	4 54.0 in 1977	4 6.25 in 1983	4 0.73 in 1950
5 66.1 in 2019	5 54.3 in 1980	5 6.16 in 1978	5 0.75 in 1989
6 65.9 in 1956	6 54.7 in 1968	6 5.64 in 2006	6 0.82 in 2009
7 65.8 in 2023	7 54.8 in 1988	7 5.56 in 1971	7 0.95 in 1949
65.8 in 1982	8 54.9 in 2015	8 5.43 in 1964	8 0.99 in 2022
9 65.7 in 1975	9 55.1 in 2009	9 5.35 in 2003	0.99 in 2005
10 64.9 in 1990	10 55.3 in 2006	10 5.34 in 1970	0.99 in 1995
	55.3 in 1979	...	0.99 in 1956
	55.3 in 1973	48 2.31 in 2023	27 2.31 in 2023

Normal Temperature for February at INVf1 = 58.9°
 Normal Rainfall for February at INVf1 = 2.69 in.

Warmest Winters	Coolest Winters	Wettest Winters	Driest Winters
1 67.0 in 1948-49	1 52.5 in 2002-03	1 22.52 in 1997-98	1 1.98 in 1949-50
2 66.0 in 1949-50	2 53.1 in 1977-78	2 17.06 in 1977-78	2 2.49 in 2004-05
3 65.3 in 1956-57	53.1 in 1976-77	3 16.66 in 2018-19	3 2.59 in 1984-85
4 64.1 in 2016-17	4 53.2 in 2009-10	4 14.69 in 1969-70	4 2.98 in 2012-13
5 63.0 in 1971-72	5 53.5 in 1957-58	5 14.46 in 1963-64	5 3.20 in 1956-57
6 62.5 in 1951-52	6 54.1 in 2010-11	6 14.06 in 2002-03	6 3.52 in 1948-49
7 62.3 in 1974-75	7 55.6 in 1987-88	7 13.93 in 1951-52	7 3.56 in 2021-22
62.3 in 1964-65	8 55.9 in 1995-96	8 12.79 in 1978-79	8 3.81 in 1975-76
9 62.2 in 1973-74	9 56.1 in 1963-64	9 12.70 in 1993-94	9 3.90 in 2011-12
62.2 in 1953-54	10 56.3 in 2005-06	10 12.25 in 1983-84	10 4.02 in 1955-56
11 61.6 in 2022-23			11 4.26 in 1998-99
			12 4.42 in 1988-89
			13 4.58 in 2022-23

Normal Temperature for Winter (Dec/Jan/Feb) at INVf1 = 58.0°
 Normal Rainfall for Winter (Dec/Jan/Feb) at INVf1 = 8.14 in.

BROOKSVILLE AREA (records began in January 1892):

Warmest Februarys	Coolest Februarys	Wettest Februarys	Driest Februarys
1 70.6 in 2018	1 50.4 in 2010	1 10.15 in 1998	1 0.10 in 1911
2 69.9 in 1927	2 52.1 in 1895	2 9.59 in 1952	2 0.11 in 2017
3 69.1 in 1932	3 52.8 in 1902	3 8.84 in 1899	3 0.14 in 2000
4 69.0 in 1949	4 52.9 in 1978	4 8.72 in 2004	4 0.48 in 2023
5 68.8 in 1944	5 54.8 in 1947	5 7.37 in 1936	5 0.50 in 1948
6 68.6 in 2019	54.8 in 1920	6 7.19 in 1983	6 0.52 in 1938
68.6 in 1939	7 55.2 in 1901	7 7.04 in 1903	7 0.53 in 2009
8 68.4 in 1918	8 55.9 in 2009	8 6.83 in 1971	0.53 in 1939
9 68.1 in 1959	9 56.0 in 1963	9 6.78 in 1981	9 0.54 in 1999
10 66.9 in 1975	56.0 in 1942	10 6.52 in 1946	10 0.57 in 2001
66.9 in 1945			0.57 in 1943
...			
15 66.5 in 2023			
66.5 in 1956			

Normal Temperature for February at BKV = 60.6°
 Normal Rainfall for February at BKV = 2.57 in.

Warmest Winters	Coolest Winters	Wettest Winters	Driest Winters
1 68.2 in 1931-32	1 53.8 in 1901-02	1 22.83 in 1997-98	1 1.09 in 1910-11
2 67.5 in 1948-49	2 54.0 in 2009-10	2 17.83 in 1898-99	2 1.57 in 1906-07
3 66.9 in 1949-50	3 54.5 in 2010-11	3 17.22 in 1935-36	3 1.89 in 2011-12
4 66.1 in 1926-27	4 55.0 in 2002-03	4 16.98 in 1911-12	4 2.44 in 1949-50
5 65.8 in 1912-13	5 55.7 in 1976-77	5 16.44 in 1969-70	5 2.63 in 1938-39
6 65.4 in 1936-37	6 56.2 in 1969-70	6 16.21 in 1902-03	6 2.81 in 1999-00
65.4 in 1932-33	7 56.4 in 2003-04	7 15.51 in 1963-64	7 2.87 in 2008-09
8 65.2 in 1971-72	8 56.7 in 1963-64	8 14.93 in 1913-14	8 3.02 in 1908-09
9 64.3 in 1973-74	9 56.8 in 1939-40	9 14.80 in 2003-04	9 3.26 in 1942-43
10 64.1 in 1974-75	56.8 in 1894-95	10 14.79 in 1977-78	10 3.43 in 1984-85
...			
31 62.3 in 2022-23	72 62.3 in 2022-23		
62.3 in 1921-22	62.3 in 1921-22		

Normal Temperature for Winter (Dec/Jan/Feb) at BKV = 59.5°

Total Rainfall for Winter 2022-23 (Dec/Jan/Feb) = Few days missing in Dec & Jan
 Normal Rainfall for Winter (Dec/Jan/Feb) at BKV = 8.14 in.

ST LEO (records began in April 1895):

Warmest Februarys	Coolest Februarys	Wettest Februarys	Driest Februarys
1 71.2 in 2018	1 52.7 in 1958	1 11.04 in 1998	1 0.01 in 1911
2 70.2 in 1932	2 53.3 in 2010	2 9.71 in 1899	2 0.14 in 1999
3 69.5 in 1949	3 53.9 in 1978	3 9.48 in 1983	3 0.24 in 2023
4 69.4 in 2019	4 54.4 in 1947	4 8.69 in 1937	4 0.25 in 1950
5 69.1 in 1982	5 54.9 in 1968	5 8.09 in 1936	5 0.32 in 1945
6 69.0 in 1990	6 55.9 in 1912	6 7.22 in 1915	6 0.40 in 1989
7 68.9 in 1959	7 56.0 in 1942	7 6.92 in 1897	7 0.42 in 1948
8 68.7 in 1939	8 56.5 in 1902	8 6.35 in 1971	8 0.44 in 1916
9 68.2 in 1944	9 56.7 in 1964	6.35 in 1952	9 0.48 in 1938
10 68.1 in 1962	10 57.1 in 1970	10 6.31 in 1963	10 0.51 in 1922
	57.1 in 1941		
	57.1 in 1920		
...			
17 66.8 in 2023			
66.8 in 1927			

Normal Temperature for February at STLf1 = 62.6°
 Normal Rainfall for February at STLf1 = 2.38 in.

Warmest Winters	Coolest Winters	Wettest Winters	Driest Winters
1 68.7 in 1931-32	1 54.7 in 1930-31	1 28.97 in 1997-98	1 1.56 in 1906-07
2 68.0 in 1948-49	2 55.5 in 1957-58	2 23.03 in 1898-99	2 1.72 in 1910-11
3 66.6 in 1949-50	3 56.3 in 1977-78	3 18.02 in 1981-82	3 2.07 in 1949-50
4 66.4 in 1936-37	4 56.4 in 1939-40	4 17.89 in 2002-03	4 2.23 in 1938-39
5 66.1 in 1956-57	5 56.5 in 2009-10	5 16.87 in 1969-70	5 2.62 in 2011-12
6 65.8 in 1971-72	56.5 in 1976-77	6 16.34 in 1935-36	6 2.71 in 1975-76
7 65.7 in 1912-13	7 56.9 in 1969-70	7 15.61 in 1913-14	7 2.81 in 1937-38
8 65.5 in 1998-99	8 57.1 in 2010-11	8 14.90 in 1940-41	8 2.93 in 2021-22
9 65.2 in 2007-08	9 57.3 in 1927-28	9 14.55 in 1902-03	9 3.48 in 1915-16
10 65.1 in 2016-17	10 57.5 in 1935-36	10 14.40 in 1977-78	10 3.54 in 2016-17
65.1 in 1990-91	
...		90 5.17 in 2022-23	38 5.17 in 2022-23
29 63.3 in 2022-23	91 63.3 in 2022-23		
63.3 in 1947-48	63.3 in 1947-48		
63.3 in 1946-47	63.3 in 1946-47		

Normal Temperature for Winter (Dec/Jan/Feb) at STLf1 = 61.5°
 Normal Rainfall for Winter (Dec/Jan/Feb) at STLf1 = 7.97 in.

TARPON SPRINGS (records began in January 1892):

Warmest Februarys	Coolest Februarys	Wettest Februarys	Driest Februarys
1 71.2 in 2018	1 51.8 in 1958	1 10.91 in 1998	1 0.06 in 1911
2 70.7 in 1932	2 52.0 in 1895	2 9.79 in 1899	2 0.17 in 2009
3 69.6 in 2019	3 53.0 in 1978	3 8.90 in 1936	3 0.26 in 1918
69.6 in 1949	4 54.6 in 2010	4 8.56 in 1937	4 0.32 in 1999
5 69.3 in 1990	5 55.0 in 1968	5 8.45 in 1983	5 0.38 in 1997
6 68.9 in 1944	6 55.2 in 1902	6 7.36 in 1971	6 0.40 in 1950
68.9 in 1939	7 55.4 in 1964	7 6.52 in 1903	7 0.41 in 1989
8 68.7 in 1927	55.4 in 1947	8 6.49 in 1963	8 0.44 in 1945
9 68.6 in 1997	9 55.5 in 1980	9 6.31 in 2004	9 0.52 in 1938
10 68.1 in 1982	10 55.7 in 1963	10 6.24 in 1970	10 0.59 in 1944
11 67.3 in 2023			11 0.65 in 2023
67.3 in 1918			

Normal Temperature for February at TRPF1 = 62.9°

Normal Rainfall for February at TRPF1 = 2.51 in.

Warmest Winters	Coolest Winters	Wettest Winters	Driest Winters
1 70.5 in 1931-32	1 54.2 in 1957-58	1 29.65 in 1997-98	1 0.97 in 1949-50
2 67.3 in 1949-50	2 55.1 in 1963-64	2 20.41 in 1935-36	2 2.06 in 1910-11
3 66.0 in 1932-33	3 55.8 in 1977-78	3 19.40 in 1898-99	3 2.08 in 1938-39
4 65.9 in 2016-17	4 56.3 in 1980-81	4 18.08 in 1969-70	4 2.14 in 1906-07
5 65.6 in 1990-91	5 56.5 in 1962-63	5 17.47 in 1983-84	5 2.37 in 2000-01
6 65.5 in 1936-37	56.5 in 1939-40	6 17.41 in 2002-03	6 2.67 in 2008-09
7 65.3 in 2019-20	7 56.6 in 2010-11	7 16.44 in 2018-19	7 3.02 in 1975-76
65.3 in 1996-97	56.6 in 1901-02	8 15.17 in 1902-03	8 3.11 in 1934-35
65.3 in 1926-27	9 56.8 in 2009-10	9 14.89 in 1963-64	9 3.41 in 2021-22
65.3 in 1912-13	56.8 in 1976-77	10 14.33 in 1985-86	10 3.54 in 1968-69
...	56.8 in 1969-70
42 62.9 in 2022-23	74 62.9 in 2022-23	90 5.68 in 2022-23	39 5.68 in 2022-23
62.9 in 1964-65	62.9 in 1964-65		
62.9 in 1893-94	62.9 in 1893-94		

Normal Temperature for Winter (Dec/Jan/Feb) at TRPF1 = 61.8°

Total Rainfall for Winter 2022-23 (Dec/Jan/Feb) = 5.68 in.

Normal Rainfall for Winter (Dec/Jan/Feb) at TRPF1 = 8.28 in.

TAMPA AREA (records began in April 1890):

Warmest Februarys	Coolest Februarys	Wettest Februarys	Driest Februarys
1 74.2 in 2018	1 52.9 in 1958	1 10.92 in 1937	1 0.05 in 1911
2 70.9 in 2019	2 53.2 in 1978	2 10.82 in 1998	2 0.08 in 1918
3 70.8 in 1932	3 54.3 in 1968	3 9.09 in 2006	3 0.21 in 1950
4 70.3 in 2023	4 54.8 in 1947	4 7.95 in 1963	4 0.25 in 1932
5 70.1 in 1949	5 54.8 in 1895	5 7.43 in 1936	5 0.29 in 1999
6 69.1 in 1990	6 55.0 in 2010	6 7.35 in 1983	6 0.30 in 2000
6 69.1 in 1891	7 55.8 in 1969	7 6.55 in 2015	7 0.34 in 1949
8 68.9 in 1959	8 56.2 in 1912	8 6.27 in 1899	8 0.41 in 1991
8 68.9 in 1927	8 56.2 in 1902	9 6.06 in 1903	8 0.41 in 1989
10 68.8 in 2017	10 56.6 in 1980	10 5.98 in 1919	10 0.43 in 1994
			11 0.46 in 2023

Normal Temperature for February at TPA = 64.7°

Normal Rainfall for February at TPA = 2.62 in.

Warmest Winters	Coolest Winters	Wettest Winters	Driest Winters
1 70.3 in 1931-32	1 55.2 in 1957-58	1 31.03 in 1997-98	1 0.51 in 1949-50
2 68.4 in 2016-17	2 55.7 in 1977-78	2 17.11 in 2002-03	2 1.41 in 1906-07
68.4 in 1948-49	3 56.0 in 1976-77	3 15.81 in 2018-19	3 1.71 in 1931-32
4 67.6 in 2021-22	4 56.2 in 1980-81	4 15.59 in 1898-99	4 1.76 in 1975-76
5 67.0 in 1949-50	5 56.5 in 1969-70	5 14.86 in 1936-37	5 1.86 in 1910-11
6 66.8 in 2017-18	6 56.8 in 1963-64	6 14.53 in 1914-15	6 2.15 in 1948-49
7 66.7 in 1936-37	7 57.2 in 1939-40	7 13.78 in 1902-03	7 2.54 in 1938-39
8 66.5 in 2019-20	8 57.3 in 1968-69	8 13.77 in 1941-42	8 2.67 in 2021-22
9 66.4 in 2022-23	9 57.4 in 1901-02	9 13.74 in 1935-36	9 2.76 in 1943-44
10 66.1 in 2011-12	10 57.7 in 2009-10	10 12.76 in 1963-64	10 2.85 in 1934-35
66.1 in 1912-13	
		99 4.36 in 2022-23	35 4.36 in 2022-23

Normal Temperature for Winter (Dec/Jan/Feb) at TPA = 63.9°

Normal Rainfall for Winter (Dec/Jan/Feb) at TPA = 7.83 in.

ST PETERSBURG – ALBERT WHITTED (records began in August 1914):

Warmest Februarys		Coolest Februarys		Wettest Februarys		Driest Februarys	
1	72.6 in 2018	1	55.7 in 1978	1	12.71 in 1998	1	0.12 in 1918
2	72.3 in 1932	2	55.9 in 2010	2	10.93 in 1937	2	0.18 in 2001
3	71.1 in 1949	3	57.3 in 1964	3	9.06 in 1983	3	0.19 in 2023
4	70.4 in 2023		57.3 in 1947	4	8.26 in 1963	4	0.24 in 1976
5	70.1 in 2019	5	58.3 in 1940	5	7.96 in 1936	5	0.25 in 1999
6	70.0 in 1959	6	58.8 in 1963	6	6.69 in 1946	6	0.29 in 2012
7	69.9 in 1927	7	58.9 in 1980	7	6.37 in 1972	7	0.34 in 1949
8	69.6 in 1957	8	59.0 in 1968	8	5.97 in 1964	8	0.43 in 1989
9	69.4 in 1944	9	59.3 in 1941	9	5.67 in 1958	9	0.44 in 1944
10	69.3 in 1982	10	59.5 in 1977	10	5.57 in 1919	10	0.45 in 1950
	69.3 in 1939		59.5 in 1942				

Normal Temperature for February at SPG = 64.9°

Normal Rainfall for February at SPG = 2.02 in.

Warmest Winters		Coolest Winters		Wettest Winters		Driest Winters	
1	72.1 in 1931-32	1	58.1 in 1939-40	1	32.36 in 1997-98	1	0.59 in 1949-50
2	69.4 in 1948-49	2	58.2 in 1963-64	2	20.23 in 2002-03	2	1.49 in 2016-17
3	68.3 in 1971-72	3	58.5 in 2009-10	3	17.14 in 1963-64	3	1.51 in 2000-01
4	68.1 in 1936-37		58.5 in 1976-77	4	16.95 in 1914-15	4	1.54 in 1975-76
5	67.8 in 1949-50	5	58.7 in 1977-78	5	15.15 in 1935-36	5	1.92 in 2011-12
6	67.7 in 2016-17	6	59.2 in 1980-81	6	13.63 in 1947-48	6	2.06 in 1938-39
	67.7 in 2012-13	7	59.3 in 1962-63	7	13.50 in 1969-70	7	2.11 in 1955-56
8	67.6 in 1956-57	8	59.8 in 1969-70	8	13.37 in 1936-37	8	2.21 in 1934-35
9	67.5 in 1932-33	9	60.1 in 1930-31	9	13.14 in 1957-58	9	2.23 in 2021-22
10	67.1 in 2021-22	10	60.5 in 2002-03	10	12.64 in 1945-46	10	2.35 in 1948-49
	67.1 in 1926-27						...
...							17 3.48 in 2022-23
18	66.3 in 2022-23						

Normal Temperature for Winter (Dec/Jan/Feb) at SPG = 64.1°

Normal Rainfall for Winter (Dec/Jan/Feb) at SPG = 6.93 in.

PLANT CITY (records began in September 1892):

Warmest Februarys		Coolest Februarys		Wettest Februarys		Driest Februarys	
1	73.2 in 2018	1	54.6 in 1958	1	9.04 in 1936	1	0.00 in 1911
2	71.9 in 2019	2	54.9 in 2010	2	8.87 in 1899	2	Trace in 1918
3	71.4 in 2023	3	55.9 in 1978	3	8.57 in 1983	3	0.05 in 1989
4	70.6 in 1949	4	56.0 in 1902	4	8.49 in 1998	4	0.09 in 1976
5	70.1 in 1959	5	56.2 in 1947	5	7.97 in 1937	5	0.25 in 1950
6	69.6 in 1918	6	56.7 in 1968	6	7.56 in 1963	6	0.28 in 1932
7	69.0 in 2017		56.7 in 1942	7	6.77 in 1919	7	0.31 in 2000
8	68.9 in 1982		56.7 in 1941	8	6.13 in 1972	8	0.36 in 1945
9	68.8 in 2021	9	56.9 in 1931	9	5.98 in 2015	9	0.37 in 1949
	68.8 in 1939	10	57.1 in 1912	10	5.73 in 1992		0.37 in 1944
						...	
						20	0.70 in 2023

Normal Temperature for February at PLCF1 = 65.3°

Normal Rainfall for February at PLCF1 = 2.33 in.

Warmest Winters		Coolest Winters		Wettest Winters		Driest Winters	
1	68.7 in 1948-49	1	55.2 in 1930-31	1	26.68 in 1997-98	1	1.03 in 1906-07
2	67.3 in 2019-20	2	56.5 in 1935-36	2	17.28 in 1898-99	2	1.06 in 1975-76
3	67.2 in 1971-72	3	56.6 in 1939-40	3	17.16 in 1935-36	3	2.04 in 1910-11
4	67.0 in 2022-23		56.6 in 1901-02	4	16.72 in 2002-03	4	2.15 in 1938-39
5	66.8 in 1956-57	5	56.7 in 1957-58	5	14.99 in 2018-19	5	2.19 in 1908-09
6	66.2 in 1949-50	6	57.2 in 1980-81	6	14.70 in 1914-15	6	2.39 in 2011-12
7	66.1 in 2012-13	7	57.5 in 1976-77	7	14.27 in 1905-06	7	2.68 in 1917-18
8	66.0 in 2018-19	8	57.9 in 2009-10	8	14.09 in 1978-79	8	2.75 in 1942-43
9	65.8 in 2015-16	9	58.2 in 1963-64	9	13.94 in 1963-64	9	2.89 in 1904-05
10	65.7 in 2021-22	10	58.3 in 1969-70	10	13.57 in 1925-26	10	3.19 in 1948-49
			58.3 in 1895-96			...	
						21	3.77 in 2022-23

Normal Temperature for Winter (Dec/Jan/Feb) at PLCF1 = 64.2°

Normal Rainfall for Winter (Dec/Jan/Feb) at PLCF1 = 7.87 in.

LAKELAND AREA (records began in January 1915):

Warmest Februarys	Coolest Februarys	Wettest Februarys	Driest Februarys
1 72.8 in 2018	1 52.8 in 1958	1 9.60 in 1983	1 Trace in 1918
2 71.6 in 1932	2 54.7 in 1947	2 8.40 in 1936	2 0.14 in 1989
3 71.1 in 2019	3 55.0 in 1978	3 8.25 in 1998	3 0.17 in 1945
4 70.7 in 2023	4 55.8 in 1968	4 7.21 in 1937	4 0.20 in 1916
5 70.4 in 1918	5 55.9 in 2010	5 6.59 in 1963	5 0.25 in 1932
6 70.1 in 1990	6 56.7 in 1941	6 5.89 in 1915	6 0.26 in 1949
70.1 in 1949	7 56.8 in 1942	7 5.65 in 2015	0.26 in 1935
8 69.8 in 1982	8 57.3 in 1964	8 5.55 in 1919	8 0.27 in 1976
9 69.6 in 1927	57.3 in 1963	9 5.36 in 1972	9 0.46 in 2023
10 69.3 in 1939	10 57.9 in 1973	10 5.11 in 1992	10 0.48 in 1999
	57.9 in 1970		0.48 in 1944

Normal Temperature for February at LLDF1 = 65.0°

Normal Rainfall for February at LLDF1 = 2.33 in.

Warmest Winters	Coolest Winters	Wettest Winters	Driest Winters
1 70.9 in 1931-32	1 55.2 in 1957-58	1 23.72 in 1997-98	1 1.49 in 1934-35
2 68.1 in 1948-49	2 56.6 in 1976-77	2 19.49 in 2002-03	2 1.64 in 1975-76
3 68.0 in 2016-17	3 56.8 in 1977-78	3 16.60 in 1935-36	3 1.82 in 1938-39
4 66.9 in 1949-50	4 57.1 in 1969-70	4 15.22 in 2018-19	4 2.04 in 1927-28
5 66.7 in 1936-37	5 57.4 in 1963-64	5 12.94 in 1978-79	5 2.10 in 1943-44
66.7 in 1932-33	57.4 in 1939-40	6 12.66 in 1982-83	6 2.21 in 1931-32
7 66.6 in 2022-23	7 58.2 in 1982-83	7 11.97 in 1925-26	7 2.44 in 2021-22
66.6 in 2019-20	58.2 in 1980-81	8 11.96 in 1963-64	8 2.47 in 1948-49
9 66.4 in 1956-57	9 58.6 in 1962-63	9 11.81 in 1965-66	9 2.56 in 2011-12
10 66.3 in 1971-72	10 58.8 in 2009-10	10 11.58 in 1992-93	10 2.71 in 2000-01
			...
			16 3.49 in 2022-23

Normal Temperature for Winter (Dec/Jan/Feb) at LLDF1 = 64.0°

Normal Rainfall for Winter (Dec/Jan/Feb) at LLDF1 = 7.93 in.

BARTOW (records began in June 1892):

Warmest Februarys	Coolest Februarys	Wettest Februarys	Driest Februarys
1 71.6 in 2018	1 54.1 in 1895	1 9.15 in 1998	1 0.00 in 1911
2 71.0 in 1949	2 54.8 in 1958	2 9.12 in 1936	2 0.03 in 1932
3 70.1 in 1959	3 54.9 in 1912	3 8.33 in 1983	3 0.07 in 2001
4 69.7 in 2023	4 56.2 in 1968	4 8.11 in 1963	4 0.14 in 1916
69.7 in 2014	5 56.3 in 2010	5 7.30 in 1899	5 0.21 in 2000
6 69.6 in 2019	6 56.4 in 1947	6 6.41 in 1937	6 0.24 in 1989
69.6 in 1990	7 57.8 in 1901	7 6.33 in 1913	7 0.26 in 1945
69.6 in 1982	8 57.9 in 1980	8 6.23 in 1960	8 0.32 in 2023
9 69.5 in 2001	9 58.0 in 1977	9 6.16 in 1972	9 0.33 in 1950
69.5 in 1903	10 58.1 in 1964	10 5.76 in 1924	10 0.37 in 2009

Normal Temperature for February at BARF1 = 64.0°

Normal Rainfall for February at BARF1 = 2.10 in.

Warmest Winters	Coolest Winters	Wettest Winters	Driest Winters
1 68.9 in 1948-49	1 56.7 in 1957-58	1 24.41 in 1997-98	1 1.57 in 1938-39
2 67.5 in 2013-14	2 57.8 in 1909-10	2 19.39 in 2002-03	2 1.65 in 1943-44
3 66.8 in 1949-50	3 58.0 in 1980-81	3 18.87 in 1935-36	3 1.72 in 1934-35
4 66.7 in 2016-17	4 58.5 in 1969-70	4 16.42 in 1983-84	4 1.77 in 2011-12
5 66.3 in 1998-99	5 58.7 in 1963-64	5 16.18 in 1914-15	5 1.83 in 1984-85
66.3 in 1956-57	6 59.4 in 2010-11	6 16.06 in 1905-06	6 1.89 in 1910-11
7 66.2 in 1971-72	7 59.5 in 1962-63	7 15.37 in 1898-99	7 2.03 in 2000-01
8 65.8 in 1988-89	8 59.7 in 1903-04	8 15.02 in 1925-26	8 2.15 in 1915-16
65.8 in 1974-75	9 59.8 in 1911-12	9 13.59 in 1957-58	9 2.16 in 1949-50
65.8 in 1912-13	10 59.9 in 1968-69	10 13.23 in 1965-66	10 2.22 in 1904-05
	59.9 in 1954-55		...
11 65.6 in 2022-23			18 3.17 in 2022-23
65.6 in 2001-02			

Normal Temperature for Winter (Dec/Jan/Feb) at BARF1 = 63.0°

Normal Rainfall for Winter (Dec/Jan/Feb) at BARF1 = 6.92 in.

WINTER HAVEN AREA (records began in March 1941):

Warmest Februarys		Coolest Februarys		Wettest Februarys		Driest Februarys	
1	72.8 in 2019	1	54.0 in 1958	1	10.61 in 1998	1	0.20 in 1945
2	72.7 in 2018	2	55.0 in 2010	2	7.82 in 1983	2	0.32 in 1989
3	71.5 in 1949	3	55.5 in 1978	3	6.57 in 1960	3	0.33 in 1944
4	70.1 in 1990	4	56.4 in 1968	4	6.03 in 1963	4	0.41 in 2011
5	70.0 in 1975	5	56.8 in 1969	5	5.86 in 2021	5	0.44 in 1950
6	69.7 in 2023	6	57.0 in 1947		5.86 in 2015	6	0.54 in 2009
7	69.4 in 1982	7	57.9 in 1964	7	5.49 in 1957	7	0.56 in 2000
	69.4 in 1959	8	58.5 in 1980	8	5.08 in 2002	8	0.57 in 2023
9	69.0 in 1997	9	58.9 in 1977	9	5.05 in 1972	9	0.58 in 1949
10	68.9 in 1962	10	59.0 in 1963	10	4.73 in 1971	10	0.60 in 1954

Normal Temperature for February at GIF = 65.1°

Normal Rainfall for February at GIF = 2.44 in.

Warmest Winters		Coolest Winters		Wettest Winters		Driest Winters	
1	69.4 in 1948-49	1	56.6 in 1957-58	1	24.22 in 1997-98	1	1.75 in 1984-85
2	67.8 in 1949-50	2	56.9 in 1976-77	2	16.55 in 2002-03	2	1.83 in 1943-44
3	67.5 in 1971-72	3	57.7 in 1963-64	3	12.78 in 1965-66	3	2.00 in 2011-12
4	67.4 in 2016-17	4	58.0 in 2009-10	4	12.35 in 1963-64	4	2.28 in 1975-76
	67.4 in 1990-91	5	58.1 in 1977-78	5	12.17 in 1957-58	5	2.79 in 1948-49
	67.4 in 1988-89	6	58.6 in 1968-69	6	12.10 in 1947-48	6	3.00 in 2012-13
7	66.7 in 2022-23	7	58.7 in 2010-11	7	11.84 in 2018-19	7	3.09 in 2000-01
	66.7 in 2019-20	8	59.1 in 1969-70	8	11.75 in 1983-84	8	3.25 in 2021-22
9	66.4 in 1956-57	9	59.6 in 1962-63	9	11.72 in 1978-79	9	3.53 in 2017-18
10	66.3 in 2021-22	10	60.6 in 1975-76	10	10.68 in 1977-78	10	3.54 in 1949-50
						11	3.57 in 2008-09
						12	3.60 in 2022-23

Normal Temperature for Winter (Dec/Jan/Feb) at GIF = 64.0°

Normal Rainfall for Winter (Dec/Jan/Feb) at GIF = 7.61 in.

SARASOTA-BRADENTON AREA (records began in January 1911):

Warmest Februarys	Coolest Februarys	Wettest Februarys	Driest Februarys
1 71.9 in 2018	1 54.4 in 1958	1 10.16 in 1983	1 Trace in 1911
2 71.1 in 2019	2 54.8 in 1978	2 9.29 in 1963	2 0.05 in 2001
3 70.5 in 1959	3 55.7 in 2010	3 7.34 in 1915	3 0.11 in 1950
4 69.7 in 1949	4 56.3 in 1977	4 7.13 in 1992	4 0.13 in 1989
5 69.4 in 2023	5 57.3 in 1980	5 6.65 in 1936	5 0.15 in 2023
69.4 in 1990	57.3 in 1912	6 6.04 in 1937	0.15 in 1932
7 69.1 in 1932	7 57.7 in 1968	7 5.92 in 1942	7 0.20 in 1918
8 68.4 in 1982	8 58.2 in 1942	8 5.91 in 1998	8 0.21 in 1949
9 68.3 in 1939	9 58.4 in 1969	9 5.80 in 1964	9 0.25 in 1945
10 68.2 in 2012	10 58.5 in 1941	10 5.73 in 1947	10 0.27 in 1944
68.2 in 2001			

Normal Temperature for February at SRQ = 64.8°

Normal Rainfall for February at SRQ = 1.92 in.

Warmest Winters	Coolest Winters	Wettest Winters	Driest Winters
1 69.1 in 1931-32	1 55.8 in 1976-77	1 28.11 in 1997-98	1 0.14 in 1949-50
2 67.9 in 1949-50	2 56.9 in 1977-78	2 19.08 in 1914-15	2 1.26 in 2000-01
67.9 in 1948-49	3 57.1 in 1980-81	3 14.94 in 1935-36	3 1.35 in 1975-76
4 67.3 in 2019-20	4 57.3 in 1957-58	4 14.44 in 2002-03	4 1.69 in 1948-49
5 67.0 in 2016-17	5 57.6 in 1939-40	5 14.38 in 1977-78	5 1.88 in 1931-32
6 66.9 in 1936-37	6 58.0 in 1930-31	6 13.92 in 1913-14	6 1.90 in 2011-12
7 66.4 in 1956-57	7 58.2 in 2010-11	7 13.71 in 1992-93	7 2.00 in 1934-35
8 66.3 in 2018-19	8 58.6 in 2009-10	8 13.61 in 1963-64	8 2.07 in 2021-22
9 66.2 in 2022-23	9 59.0 in 1963-64	9 13.36 in 1982-83	9 2.14 in 1938-39
10 66.1 in 2007-08	10 59.5 in 1969-70	10 12.99 in 1957-58	10 2.86 in 1961-62
	59.5 in 1935-36
		86 4.21 in 2022-23	28 4.21 in 2022-23

Normal Temperature for Winter (Dec/Jan/Feb) at SRQ = 64.1°

Normal Rainfall for Winter (Dec/Jan/Feb) at SRQ = 7.04 in.

VENICE (records began in May 1955):

Warmest Februarys		Coolest Februarys		Wettest Februarys		Driest Februarys	
1	72.5 in 2018	1	54.2 in 1958	1	6.36 in 1957	1	0.00 in 2001
2	70.7 in 2019	2	55.0 in 1978	2	5.63 in 1998	2	0.10 in 1999
3	70.5 in 2023	3	57.2 in 1980	3	5.62 in 1978	3	0.15 in 1989
4	70.1 in 1959	4	58.1 in 1977	4	5.51 in 1963	4	0.16 in 2023
5	69.8 in 2012	5	58.3 in 1973	5	5.47 in 1972	5	0.29 in 1988
	69.8 in 2001	6	58.8 in 1968	6	4.92 in 2002	6	0.30 in 1997
7	68.5 in 1997	7	58.9 in 2010		4.92 in 1964	7	0.36 in 1962
8	68.2 in 2021	8	59.0 in 1964	8	4.57 in 2015	8	0.39 in 2011
	68.2 in 1994	9	59.7 in 1969	9	4.37 in 1992	9	0.41 in 1994
10	68.0 in 1989	10	60.3 in 2015	10	4.26 in 1960	10	0.60 in 2000
			60.3 in 1963				

Normal Temperature for February at VNCF1 = 64.6°

Normal Rainfall for February at VNCF1 = 2.00 in.

Warmest Winters		Coolest Winters		Wettest Winters		Driest Winters	
1	68.3 in 1988-89	1	57.0 in 1976-77	1	19.42 in 1997-98	1	1.94 in 2011-12
2	68.1 in 1971-72	2	57.2 in 1957-58	2	14.71 in 1957-58	2	1.99 in 2021-22
3	67.9 in 2016-17	3	57.5 in 1977-78	3	12.68 in 2015-16		1.99 in 2000-01
	67.9 in 2012-13	4	59.2 in 1975-76	4	12.65 in 1977-78	4	2.18 in 2016-17
5	67.5 in 2011-12	5	59.6 in 1963-64	5	12.35 in 2018-19	5	2.21 in 1975-76
6	67.1 in 2022-23	6	59.7 in 1969-70	6	12.01 in 1972-73	6	2.48 in 2022-23
7	67.0 in 1998-99	7	60.5 in 1962-63	7	11.45 in 1963-64	7	2.61 in 1961-62
8	66.6 in 2019-20	8	60.6 in 2010-11	8	11.34 in 1965-66	8	2.70 in 1984-85
9	66.2 in 1996-97	9	60.7 in 1979-80	9	11.20 in 2009-10	9	3.19 in 2012-13
10	65.9 in 2017-18	10	60.9 in 2002-03	10	10.94 in 1983-84	10	3.25 in 1996-97
			60.9 in 1968-69				3.25 in 1973-74

Normal Temperature for Winter (Dec/Jan/Feb) at VNCF1 = 63.8°

Normal Rainfall for Winter (Dec/Jan/Feb) at VNCF1 = 6.99 in.

MYAKKA RIVER STATE PARK (Temperature records began in March 1956
and Rainfall records began in September 1943):

Warmest Februarys	Coolest Februarys	Wettest Februarys	Driest Februarys
1 72.3 in 2018	1 52.7 in 1958	1 11.28 in 1998	1 Trace in 2001
2 71.7 in 2019	2 54.9 in 1968	2 9.55 in 1983	2 0.01 in 1950
3 70.3 in 1982	3 56.7 in 1963	3 6.01 in 1963	3 0.02 in 1999
4 70.0 in 1997	4 56.9 in 2010	4 5.88 in 1981	4 0.23 in 1989
5 69.7 in 1992	5 57.0 in 1978	5 5.49 in 1978	5 0.28 in 1944
6 69.4 in 1959	6 57.9 in 1973	6 5.41 in 1957	6 0.30 in 2023
7 69.1 in 2001	7 58.6 in 1980	7 5.33 in 2015	7 0.32 in 2011
8 68.9 in 2012	8 58.9 in 1977	8 5.21 in 2002	8 0.34 in 1949
68.9 in 1994	9 60.5 in 2009	9 4.97 in 1961	9 0.41 in 1945
10 68.7 in 1990	10 60.9 in 2015	10 4.62 in 1972	10 0.44 in 1948
11 68.5 in 1975			
12 68.4 in 2023			

Normal Temperature for February at MKCF1 = 65.0°
Normal Rainfall for February at MKCF1 = 2.44 in.

Warmest Winters	Coolest Winters	Wettest Winters	Driest Winters
1 68.4 in 2016-17	1 57.2 in 1962-63	1 27.20 in 1997-98	1 0.04 in 1949-50
2 66.7 in 1971-72	2 58.2 in 1976-77	2 16.36 in 1977-78	2 1.64 in 1943-44
3 66.6 in 1998-99	3 58.5 in 1980-81	3 14.36 in 2015-16	3 1.68 in 2000-01
4 66.5 in 1992-93	4 58.9 in 1977-78	4 14.27 in 1978-79	4 1.77 in 1948-49
5 66.4 in 1991-92	5 59.4 in 2002-03	5 13.83 in 1992-93	5 2.08 in 2011-12
6 66.3 in 2012-13	6 59.6 in 2009-10	6 13.60 in 1972-73	6 2.14 in 1984-85
7 66.1 in 2018-19	7 59.7 in 2010-11	7 13.28 in 1982-83	7 2.26 in 1944-45
66.1 in 2013-14	59.7 in 1960-61	8 12.66 in 1957-58	8 2.49 in 2021-22
66.1 in 1990-91	9 61.3 in 1975-76	9 12.60 in 2018-19	9 2.50 in 2022-23
10 66.0 in 2011-12	10 61.6 in 2000-01	10 12.09 in 2003-04	10 2.51 in 1975-76
66.0 in 1974-75			
12 65.9 in 1996-97			
13 65.7 in 2017-18			
65.7 in 2015-16			
15 65.9 in 1996-97			
16 65.9 in 1996-97			
17 65.0 in 2022-23			
65.0 in 2001-02			

Normal Temperature for Winter (Dec/Jan/Feb) at MKCF1 = 64.0°
Normal Rainfall for Winter (Dec/Jan/Feb) at MKCF1 = 7.80 in.

WAUCHULA 2 N (records began in January 1933):

Warmest Februarys		Coolest Februarys		Wettest Februarys		Driest Februarys	
1	71.1 in 1949	1	46.7 in 2010	1	8.92 in 1936	1	0.00 in 2001
2	70.8 in 2018	2	54.4 in 1958	2	8.82 in 1998		0.00 in 2000
3	70.7 in 1939	3	56.3 in 1978	3	7.99 in 1983	3	0.19 in 1945
4	70.1 in 1959	4	57.1 in 1947	4	7.37 in 1963	4	0.22 in 1989
5	69.8 in 1933	5	57.3 in 1968	5	6.29 in 1992	5	0.30 in 1997
6	69.5 in 1982	6	58.3 in 2015	6	6.03 in 2002	6	0.33 in 1950
7	69.4 in 1990	7	58.5 in 2007	7	5.46 in 1960	7	0.45 in 2009
8	69.3 in 1975		58.5 in 1942	8	5.34 in 1942		0.45 in 1949
9	69.1 in 2019	9	58.7 in 1980	9	5.26 in 1937	9	0.46 in 2023
10	69.0 in 2023	10	58.9 in 1964	10	5.24 in 1952	10	0.52 in 2018

Normal Temperature for February at WAUF1 = 62.9°

Normal Rainfall for February at WAUF1 = 2.18 in.

Warmest Winters		Coolest Winters		Wettest Winters		Driest Winters	
1	68.8 in 1948-49	1	49.6 in 2009-10	1	21.20 in 1997-98	1	0.72 in 1949-50
2	68.5 in 1936-37	2	56.5 in 2010-11	2	16.61 in 1935-36	2	1.45 in 2000-01
3	67.4 in 1971-72	3	58.0 in 1977-78	3	14.21 in 1965-66	3	1.90 in 2011-12
4	67.3 in 2007-08	4	58.1 in 1980-81	4	14.16 in 1957-58	4	2.00 in 1948-49
5	66.4 in 1974-75	5	58.4 in 2002-03	5	13.26 in 1982-83	5	2.11 in 1938-39
6	66.2 in 1990-91	6	58.6 in 1969-70	6	12.58 in 1972-73	6	2.13 in 1934-35
7	66.0 in 2016-17	7	58.7 in 1976-77	7	12.15 in 1978-79	7	2.33 in 1975-76
8	65.9 in 1988-89		58.7 in 1939-40	8	11.65 in 2009-10	8	2.34 in 1984-85
9	65.8 in 1956-57	9	58.8 in 2003-04	9	11.53 in 2018-19	9	2.40 in 1999-00
10	65.7 in 1961-62	10	59.0 in 1963-64	10	11.48 in 2015-16	10	2.42 in 1943-44
...				
16	64.8 in 2022-23			59	4.84 in 2022-23	28	4.84 in 2022-23

Normal Temperature for Winter (Dec/Jan/Feb) at WAUF1 = 62.0°

Normal Rainfall for Winter (Dec/Jan/Feb) at WAUF1 = 6.60 in.

ARCHBOLD BIO STATION (records began in January 1969):

Warmest Februarys		Coolest Februarys		Wettest Februarys		Driest Februarys	
1	71.3 in 2018	1	55.2 in 1978	1	10.85 in 1983	1	0.00 in 2001
2	69.8 in 2019	2	55.4 in 2010	2	8.28 in 1998	2	0.22 in 2011
3	69.3 in 2001	3	56.8 in 1980	3	5.00 in 2004	3	0.27 in 1999
4	68.9 in 1990	4	57.8 in 1969	4	4.73 in 1992	4	0.33 in 1989
	68.9 in 1982	5	58.1 in 1973	5	4.32 in 2020	5	0.37 in 2000
6	68.6 in 1975	6	58.2 in 1970	6	3.86 in 2002	6	0.38 in 2009
7	68.5 in 2023	7	59.2 in 1988	7	3.57 in 1970	7	0.49 in 1975
8	68.2 in 2021	8	59.3 in 2009	8	3.51 in 2016	8	0.53 in 1977
9	68.1 in 1997	9	59.8 in 2006	9	3.46 in 1981	9	0.54 in 2023
10	67.3 in 2012		59.8 in 1977	10	3.31 in 2006		0.54 in 2018

Normal Temperature for February at ACHF1 = 64.2°

Normal Rainfall for February at ACHF1 = 2.25 in.

Warmest Winters		Coolest Winters		Wettest Winters		Driest Winters	
1	67.4 in 2016-17	1	57.0 in 1980-81	1	21.53 in 1997-98	1	0.64 in 2000-01
2	66.2 in 1971-72	2	57.4 in 1969-70	2	16.19 in 2015-16	2	1.44 in 1975-76
3	65.9 in 2019-20	3	58.1 in 1976-77	3	15.77 in 1982-83	3	1.77 in 1984-85
4	65.7 in 1974-75	4	58.2 in 1977-78	4	13.16 in 1978-79	4	2.04 in 2016-17
5	65.4 in 2022-23	5	58.5 in 2010-11	5	11.18 in 1969-70	5	2.22 in 2022-23
	65.4 in 1990-91	6	58.6 in 2009-10	6	10.16 in 2003-04	6	2.43 in 2011-12
7	65.1 in 2015-16	7	60.0 in 2002-03	7	9.94 in 1972-73	7	2.64 in 2008-09
8	65.0 in 2017-18		60.0 in 1995-96	8	9.71 in 1994-95	8	2.68 in 1970-71
	65.0 in 2007-08	9	60.2 in 1979-80	9	9.12 in 2018-19	9	3.44 in 1981-82
10	64.8 in 2018-19	10	60.4 in 2003-04	10	9.09 in 1977-78	10	3.48 in 2017-18
	64.8 in 2012-13		60.4 in 1987-88				

Normal Temperature for Winter (Dec/Jan/Feb) at ACHF1 = 63.4°

Normal Rainfall for Winter (Dec/Jan/Feb) at ACHF1 = 6.46 in.

PUNTA GORDA AREA (Temperature records began in July 1914
and Rainfall records began in May 1914):

Warmest Februarys	Coolest Februarys	Wettest Februarys	Driest Februarys
1 74.4 in 1949	1 57.3 in 1958	1 12.11 in 1936	1 0.00 in 1950
2 73.2 in 2018	2 57.5 in 2010	2 11.05 in 1983	2 0.01 in 2001
3 71.2 in 1959	57.5 in 1978	3 5.68 in 1963	3 0.04 in 1938
71.2 in 1932	4 58.6 in 1968	4 5.61 in 1982	0.04 in 1932
5 70.8 in 2023	5 58.9 in 1980	5 5.59 in 1937	5 0.09 in 1929
70.8 in 2019	6 59.3 in 1942	6 5.26 in 1998	6 0.13 in 1999
7 70.7 in 1918	7 59.5 in 1969	7 4.88 in 1924	7 0.16 in 2023
8 70.6 in 1982	8 59.8 in 1973	8 4.62 in 1964	8 0.18 in 1974
70.6 in 1962	9 60.1 in 1920	9 4.50 in 1952	9 0.25 in 1918
10 70.3 in 1957	10 60.2 in 1970	10 4.41 in 1940	10 0.26 in 1945
	60.2 in 1947		

Normal Temperature for February at PGD = 65.5°

Normal Rainfall for February at PGD = 2.47 in.

Warmest Winters	Coolest Winters	Wettest Winters	Driest Winters
1 72.0 in 1948-49	1 59.1 in 1977-78	1 16.32 in 1935-36	1 0.58 in 1949-50
2 70.7 in 1931-32	2 59.3 in 1976-77	2 15.66 in 2015-16	2 0.62 in 2000-01
3 70.2 in 1949-50	59.3 in 1969-70	3 15.45 in 1997-98	3 1.24 in 1938-39
4 69.2 in 1932-33	4 59.7 in 2010-11	4 15.16 in 1982-83	4 1.55 in 1948-49
5 68.5 in 1956-57	5 59.9 in 1957-58	5 12.66 in 1925-26	5 1.67 in 2011-12
6 68.3 in 1961-62	6 60.0 in 1980-81	6 12.65 in 1940-41	6 1.87 in 1927-28
7 68.0 in 1971-72	60.0 in 1963-64	7 11.76 in 1977-78	7 2.08 in 1973-74
8 67.9 in 1936-37	8 60.5 in 1939-40	8 11.71 in 1930-31	8 2.13 in 1932-33
9 67.5 in 2022-23	9 60.6 in 1975-76	9 11.51 in 1978-79	9 2.20 in 1961-62
10 67.4 in 2016-17	60.6 in 1968-69	10 11.42 in 1958-59	10 2.26 in 2016-17
67.4 in 1946-47			

Normal Temperature for Winter (Dec/Jan/Feb) at PGD = 64.8°

Total Rainfall for Winter 2022-23 (Dec/Jan/Feb) = Few days missing in Dec & Jan

Normal Rainfall for Winter (Dec/Jan/Feb) at PGD = 6.78 in.

FORT MYERS AREA (records began in January 1902):

Warmest Februarys	Coolest Februarys	Wettest Februarys	Driest Februarys
1 74.9 in 2018	1 55.5 in 1958	1 10.82 in 1983	1 Trace in 2001
2 73.6 in 2023	2 57.2 in 1978	2 7.12 in 1998	Trace in 1944
3 72.9 in 2019	3 58.8 in 1947	3 6.79 in 1902	Trace in 1911
4 72.3 in 1997	4 59.2 in 1902	4 5.93 in 1934	4 0.06 in 1948
5 72.2 in 1982	5 59.4 in 2010	5 5.50 in 1936	5 0.07 in 2023
6 71.8 in 1949	59.4 in 1942	6 5.13 in 1913	0.07 in 1949
7 71.4 in 2017	7 59.9 in 1968	7 4.65 in 1963	7 0.08 in 1950
71.4 in 2001	8 60.0 in 1912	8 4.34 in 1952	0.08 in 1929
9 71.3 in 1990	9 60.1 in 1970	9 4.00 in 1940	9 0.10 in 1908
10 71.2 in 2012	10 60.4 in 1941	10 3.89 in 1992	10 0.11 in 2000
			0.11 in 1943

Normal Temperature for February at FMY = 67.3°

Normal Rainfall for February at FMY = 1.78 in.

Warmest Winters	Coolest Winters	Wettest Winters	Driest Winters
1 70.9 in 2016-17	1 58.2 in 1957-58	1 18.71 in 2015-16	1 0.45 in 2000-01
2 70.7 in 1931-32	2 59.7 in 1969-70	2 15.59 in 1982-83	2 0.71 in 1948-49
3 70.3 in 2022-23	3 59.8 in 1976-77	3 15.19 in 1997-98	3 0.80 in 1910-11
4 70.1 in 1948-49	4 60.0 in 1977-78	4 13.74 in 1978-79	4 1.14 in 1984-85
5 69.8 in 1971-72	5 61.3 in 1980-81	5 12.26 in 1940-41	5 1.21 in 1926-27
6 69.7 in 2021-22	61.3 in 1939-40	6 12.02 in 1925-26	6 1.42 in 1974-75
7 69.6 in 2019-20	7 61.5 in 1963-64	7 11.51 in 2003-04	7 1.43 in 1904-05
8 69.4 in 1990-91	61.5 in 1950-51	8 11.06 in 1902-03	8 1.47 in 1928-29
9 69.1 in 1936-37	61.5 in 1903-04	9 10.85 in 1957-58	9 1.50 in 1961-62
10 69.0 in 2007-08	10 61.6 in 1930-31	10 10.51 in 1969-70	10 1.53 in 1938-39
	
		99 2.50 in 2022-23	23 2.50 in 2022-23

Normal Temperature for Winter (Dec/Jan/Feb) at FMY = 66.4°

Normal Rainfall for Winter (Dec/Jan/Feb) at FMY = 6.11 in.

For more local climate information, please visit our web page at <https://www.weather.gov/tampabay> and look within the "Climate and Past Weather" drop down menu above the map of the area.