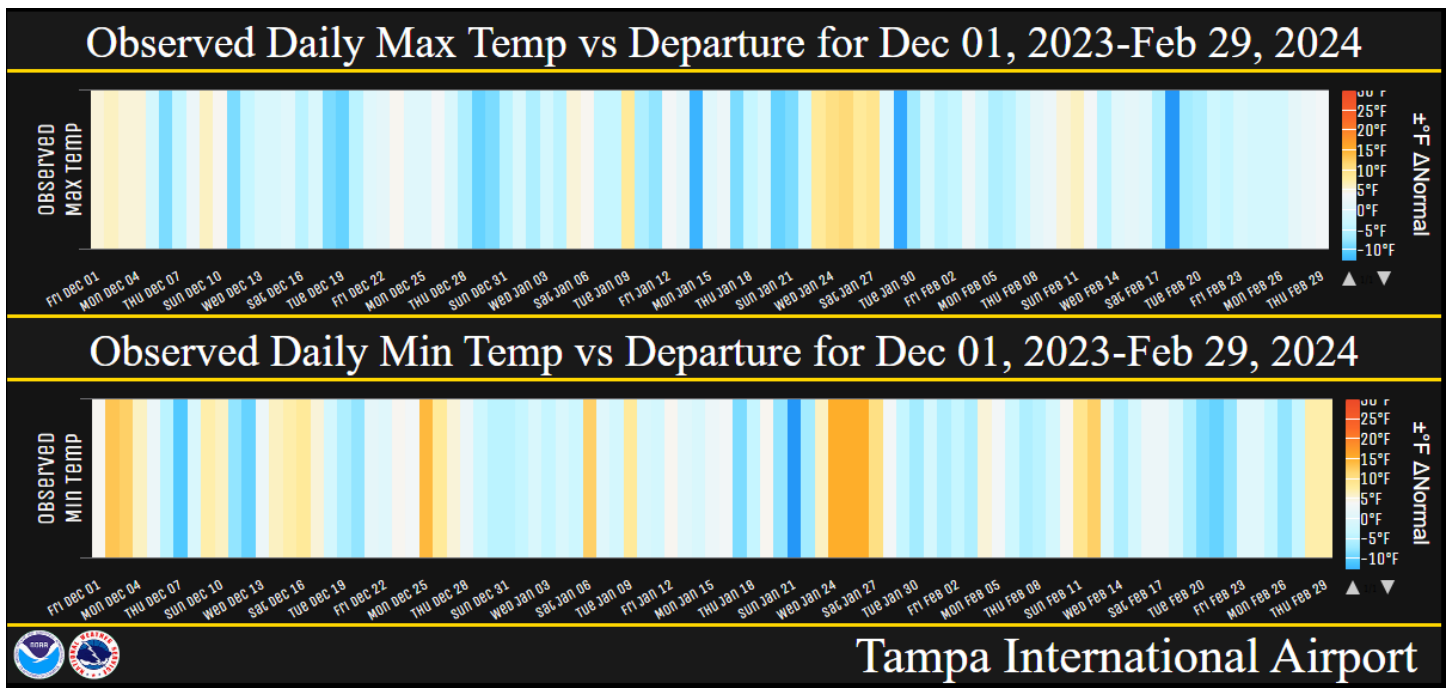


February 2024 and Winter 2023-24 Climate Summary

The ENSO (El Niño Southern Oscillation) switched from the La Niña of the last 3 winter to El Niño this winter, and potential could end up being one of the top five strongest since 1950. El Niño usually means that we'll see overall temperatures near to slightly below normal for the season while rainfall will be above normal. This overall pattern was accurate for most of West Central and Southwest Florida. We saw some large swings in the temperatures during the winter with some rather chilly days where temperatures were 10 to 15 degrees below normal while others were 10 to 15 degrees above normal. This February the temperatures ended up near normal to over 2 degrees below normal while the winter (Dec/Jan/Feb) was from about 2 degrees below normal to about 1 degree above normal.

The various ups and downs in the temperatures this past winter can be seen in the observed daily maximum and minimum temperatures for Tampa in the graphic below. The orange areas are the days with well above normal temperatures while the blue are days with well below normal temperatures.



Below are temperature tables for February and the Winter (Dec/Jan/Feb) at sites available at this time.

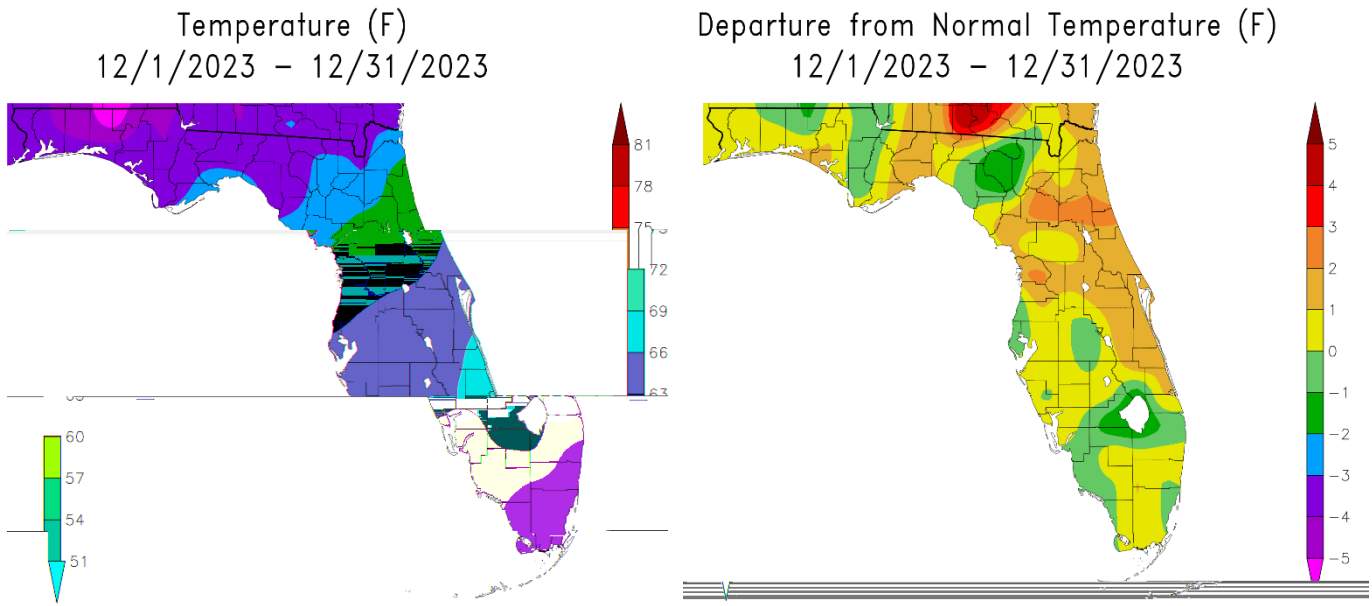
FEBRUARY TEMPERATURE RANKINGS (°F)

| Location | February 2024 | | Normal Feb Temp | Dep fm Normal | Records Began |
|-------------------------|--------------------|----------|-----------------|---------------|---------------|
| | Rank | Avg Temp | | | |
| Fort Myers Area | 58th Coolest (tie) | 65.6° | 67.3° | -1.7° | Jan 1902 |
| Punta Gorda Area | 55th Coolest | 65.3° | 65.5° | -0.2° | Jul 1914 |
| St Petersburg Area | 46th Coolest | 63.8° | 64.9° | -1.1° | Aug 1914 |
| Lakeland Area | 51st Coolest | 63.4° | 65.0° | -1.6° | Jan 1915 |
| Sarasota-Bradenton Area | 55th Coolest (tie) | 63.4° | 64.8° | -1.4° | Jan 1911 |
| Tampa Area | 73rd Coolest (tie) | 63.3° | 64.7° | -1.4° | Apr 1890 |
| Venice | 28th Coolest | 63.2° | 64.6° | -1.4° | May 1955 |
| Winter Haven Area | 34th Coolest (tie) | 63.2° | 65.1° | -1.9° | Mar 1941 |
| Plant City | 63rd Coolest (tie) | 63.0° | 65.3° | -2.3° | Sep 1892 |
| Bartow | 37th Coolest (tie) | 62.6° | 64.0° | -1.4° | Jun 1892 |
| St. Leo | 55th Coolest (tie) | 61.7° | 62.6° | -0.9° | Apr 1895 |
| Archbold Bio Stn | 23rd Coolest | 61.6° | 64.2° | -2.6° | Jan 1969 |
| Wauchula 2 N | 29th Coolest | 61.3° | 62.9° | -1.6° | Jan 1933 |
| Myakka River State Pk | 11th Coolest | 61.1° | 65.0° | -3.9° | Mar 1956 |
| Brooksville Area | 38th Coolest (tie) | 59.8° | 60.6° | -0.8° | Jan 1892 |
| Inverness 3 SE | 26th Coolest | 58.7° | 58.9° | -0.2° | Jul 1948 |
| Chiefland 5 ESE | 24th Coolest | 57.5° | 58.5° | -1.0° | Jul 1956 |

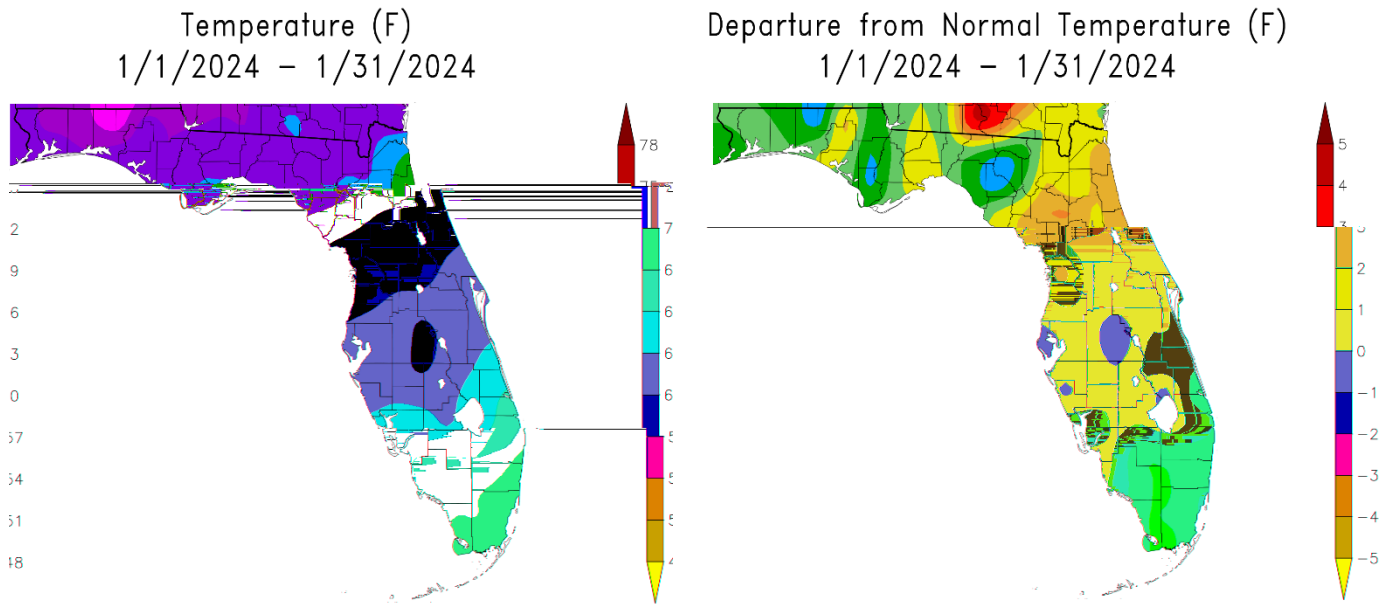
WINTER (DEC/JAN/FEB) TEMPERATURE RANKINGS (°F) :

| Location | Winter 2023-24 | | Normal Temp | Dep fm Normal | Records Began |
|-------------------------|--------------------|----------|-------------|---------------|---------------|
| | Rank | Avg Temp | | | |
| Fort Myers Area | 76th Coolest | 66.2° | 66.4° | -0.2° | Jan 1902 |
| Punta Gorda Area | 41st Warmest (tie) | 65.7° | 64.8° | +0.9° | Jul 1914 |
| Sarasota-Bradenton Area | 33rd Warmest (tie) | 64.3° | 64.1° | +0.2° | Jan 1911 |
| Venice | 24th Warmest (tie) | 64.0° | 63.8° | +0.2° | May 1955 |
| Lakeland Area | 63rd Coolest | 63.7° | 64.0° | -0.3° | Jan 1915 |
| Plant City | 74th Coolest (tie) | 63.4° | 64.2° | -0.8° | Sep 1892 |
| Tampa Area | 90th Coolest (tie) | 63.3° | 63.9° | -0.6° | Apr 1890 |
| St Petersburg Area | 35th Coolest (tie) | 63.2° | 64.1° | -0.9° | Aug 1914 |
| Winter Haven Area | 27th Coolest | 62.9° | 64.0° | -1.1° | Mar 1941 |
| Archbold Bio Stn | 28th Coolest (tie) | 62.7° | 63.4° | -0.7° | Jan 1969 |
| Bartow | 35th Coolest | 62.5° | 63.0° | -0.5° | Jun 1892 |
| Myakka River State Pk | 13th Coolest (tie) | 61.9° | 64.0° | -2.1° | Mar 1956 |
| Wauchula 2 N | 23rd Coolest (tie) | 61.9° | 62.0° | -0.1° | Jan 1933 |
| St. Leo | 53rd Coolest (tie) | 61.4° | 61.5° | -0.1° | Apr 1895 |
| Brooksville Area | 58th Warmest (tie) | 60.3° | 59.5° | +0.8° | Jan 1892 |
| Inverness 3 SE | 27th Warmest | 59.3° | 58.0° | +1.3° | Jul 1948 |
| Chiefland 5 ESE | 26th Coolest | 56.8° | 57.1° | -0.3° | Jul 1956 |

Below are graphics that depict the monthly/season average temperature and departure from normal temperature (based on the 1991-2020 Normals) across the area.



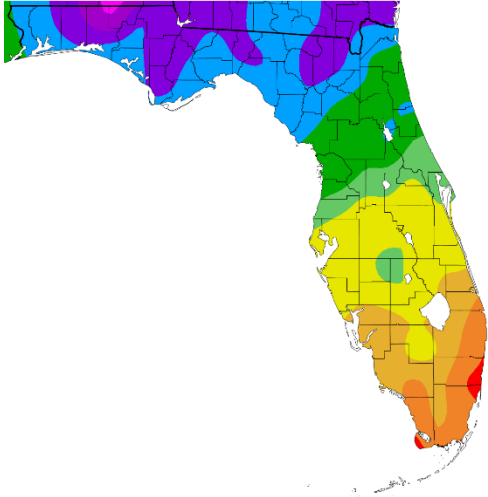
December 2023



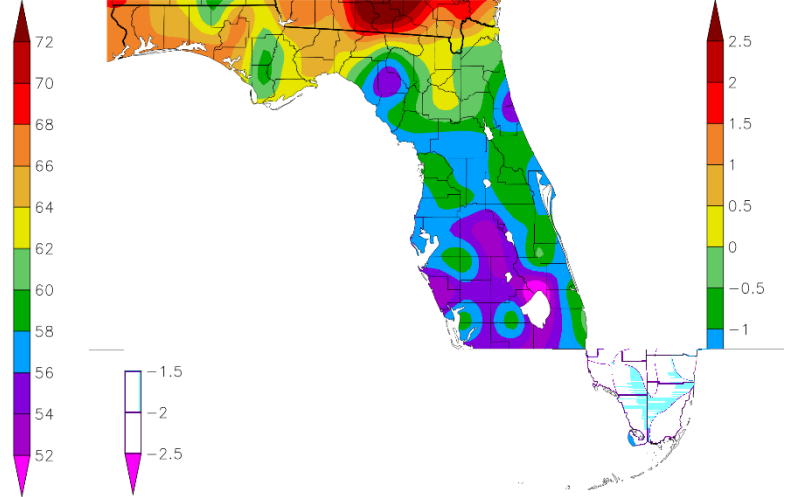
January 2024

Graphics Source: High Plains Regional Climate Center (HPRCC)

Temperature (F)
2/1/2024 - 2/29/2024

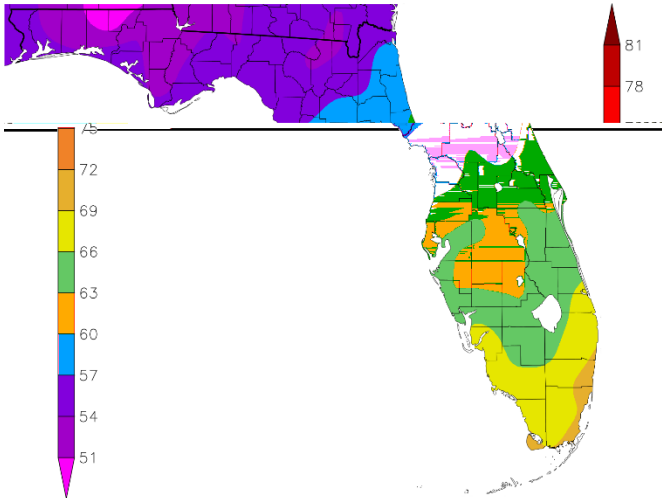


Departure from Normal Temperature (F)
2/1/2024 - 2/29/2024

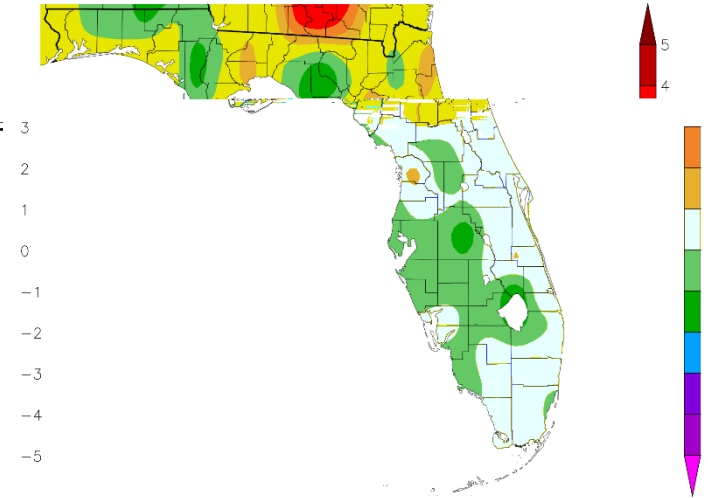


February 2024

Temperature (F)
12/1/2023 - 2/29/2024



Departure from Normal Temperature (F)
12/1/2023 - 2/29/2024



Winter (Dec/Jan/Feb) 2023-24

Graphics Source: High Plains Regional Climate Center (HPRCC)

As for rainfall during February, many areas near the coast were above normal while the interior was below normal. Meanwhile, for the Winter 2023-2024 we saw near normal to well above normal rainfall.

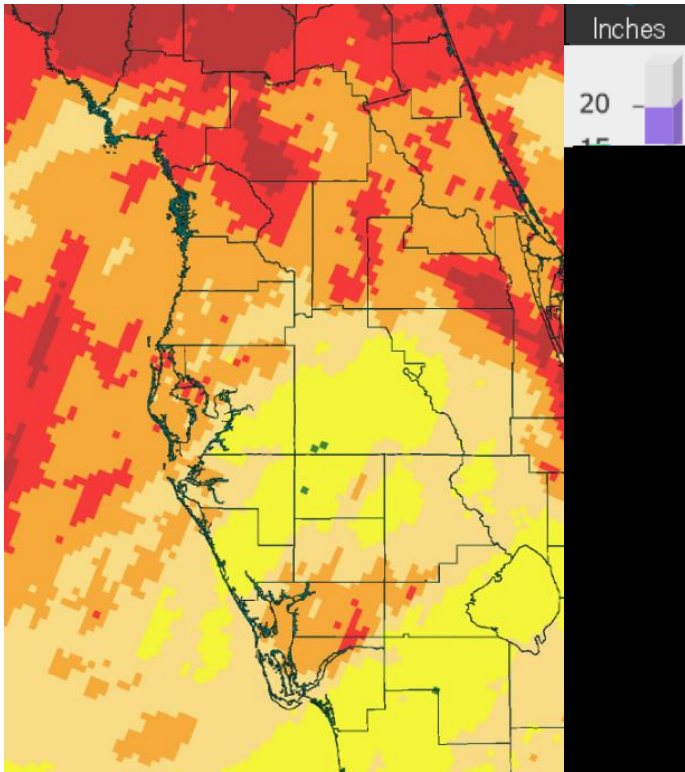
FEBRUARY RAINFALL (inches):

| Location | February 2024 Rank | Rain Total | Normal Feb Rain | Dep fm Normal | Records Began |
|-------------------------|--------------------|------------|-----------------|---------------|---------------|
| Brooksville Area | 40th Wettest | 3.69 | 2.57 | +1.12 | Jan 1892 |
| Inverness 3 SE | 22nd Wettest | 3.61 | 2.69 | +0.92 | Jul 1948 |
| St. Leo | 44th Wettest | 3.45 | 2.38 | +1.07 | Apr 1895 |
| Tampa Area | 46th Wettest (tie) | 3.32 | 2.62 | +0.70 | Apr 1890 |
| Sarasota-Bradenton Area | 37th Wettest | 3.26 | 1.92 | +1.34 | Jan 1911 |
| Myakka River State Pk | 26th Wettest | 3.10 | 2.44 | +0.66 | Sep 1943 |
| St. Petersburg Area | 37th Wettest | 2.99 | 2.02 | +0.97 | Aug 1914 |
| Venice | 23rd Wettest | 2.91 | 2.00 | +0.91 | May 1955 |
| Lakeland Area | 42nd Wettest | 2.78 | 2.33 | +0.45 | Jan 1915 |
| Chiefland 5 ESE | 30th Driest | 2.76 | 3.25 | -0.49 | Jul 1956 |
| Fort Myers Area | 38th Wettest | 2.61 | 1.78 | +0.83 | Jan 1902 |
| Plant City | 61st Wettest | 2.58 | 2.33 | +0.25 | Sep 1892 |
| Archbold Bio Stn | 19th Wettest (tie) | 2.38 | 2.25 | +0.13 | Jan 1969 |
| Punta Gorda Area | 67th Driest | 2.37 | 2.47 | -0.10 | May 1914 |
| Bartow | 64th Driest | 2.09 | 2.10 | -0.01 | Jun 1892 |
| Wauchula 2 N | 41st Driest | 2.00 | 2.18 | -0.18 | Jan 1933 |
| Winter Haven Area | 41st Driest | 1.97 | 2.44 | -0.47 | Mar 1941 |

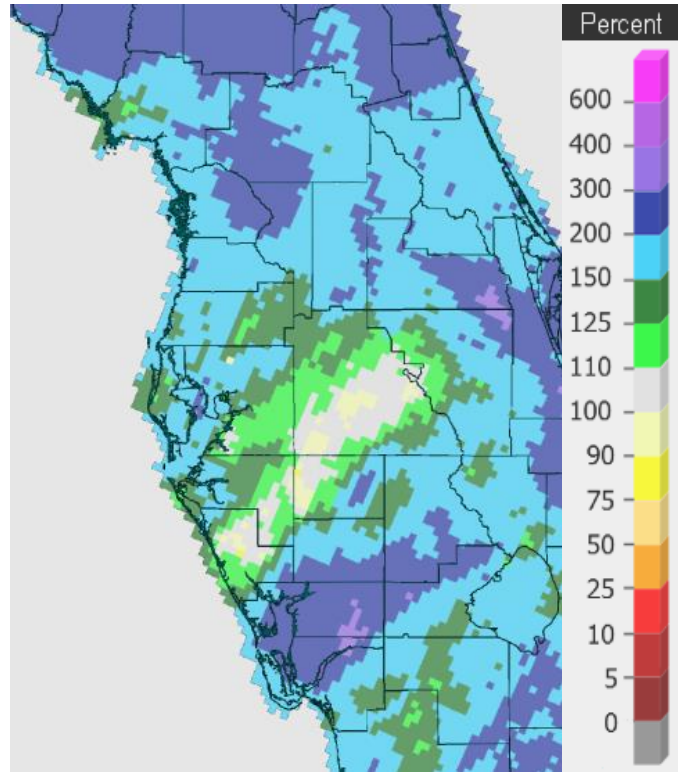
WINTER (DEC/JAN/FEB) RAINFALL (inches):

| Location | Winter 2023-24 Rank | Rain Total | Normal Rain | Dep fm Normal | Records Began |
|-------------------------|---------------------|------------|-------------|---------------|---------------|
| Chiefland 5 ESE | 12th Wettest | 14.72 | 10.11 | +4.61 | Jul 1956 |
| Inverness 3 SE | 10th Wettest | 12.35 | 8.14 | +4.21 | Jul 1948 |
| Fort Myers Area | 7th Wettest | 11.65 | 6.11 | +5.54 | Jan 1902 |
| Sarasota-Bradenton Area | 15th Wettest | 11.19 | 7.04 | +4.15 | Jan 1911 |
| Venice | 10th Wettest | 11.18 | 6.99 | +4.19 | May 1955 |
| Tampa Area | 20th Wettest | 11.03 | 7.83 | +3.20 | Apr 1890 |
| Punta Gorda Area | 12th Wettest | 10.81 | 6.78 | +4.03 | May 1914 |
| St. Petersburg Area | 22nd Wettest | 10.58 | 6.93 | +3.65 | Aug 1914 |
| Myakka River State Pk | 16th Wettest | 10.40 | 7.80 | +2.60 | Sep 1943 |
| Brooksville Area | 37th Wettest (tie) | 10.22 | 8.14 | +2.08 | Jan 1892 |
| St. Leo | 42nd Wettest (tie) | 9.66 | 7.97 | +1.69 | Apr 1895 |
| Archbold Bio Stn | 11th Wettest | 8.93 | 6.46 | +2.47 | Jan 1969 |
| Lakeland Area | 32nd Wettest | 8.71 | 7.93 | +0.78 | Jan 1915 |
| Bartow | 40th Wettest (tie) | 8.60 | 6.92 | +1.68 | Jun 1892 |
| Plant City | 43rd Wettest | 8.60 | 7.87 | +0.73 | Sep 1892 |
| Winter Haven Area | 48th Driest | 7.57 | 7.61 | -0.04 | Mar 1941 |
| Wauchula 2 N | 30th Wettest | 7.22 | 6.60 | +0.62 | Jan 1933 |

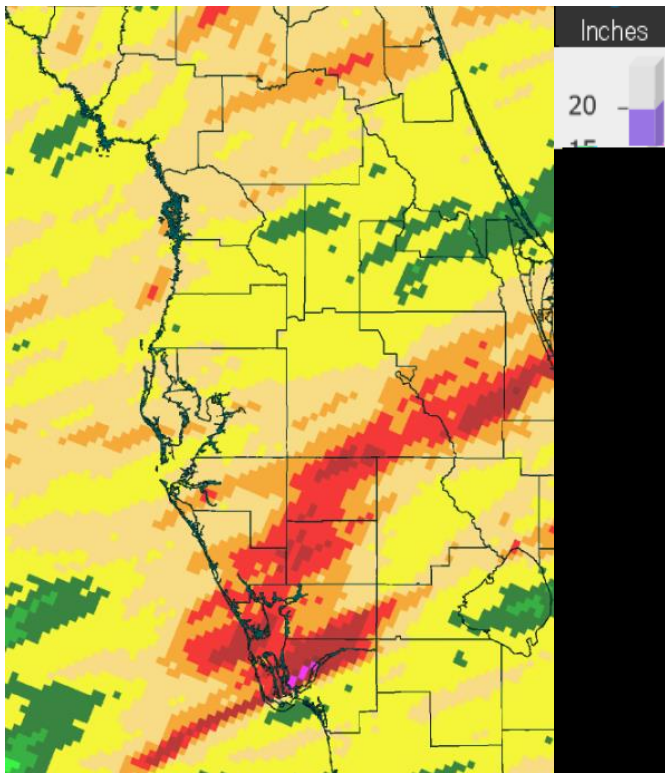
On the following pages are graphics that depict the monthly/season total rainfall and percent of normal rainfall (based on the 1991-2020 Normals).



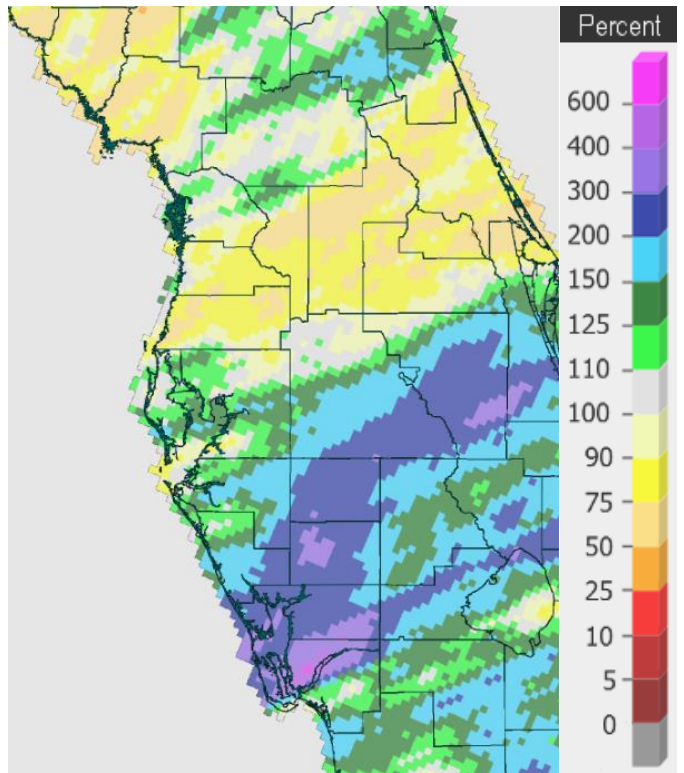
Rainfall December 2023



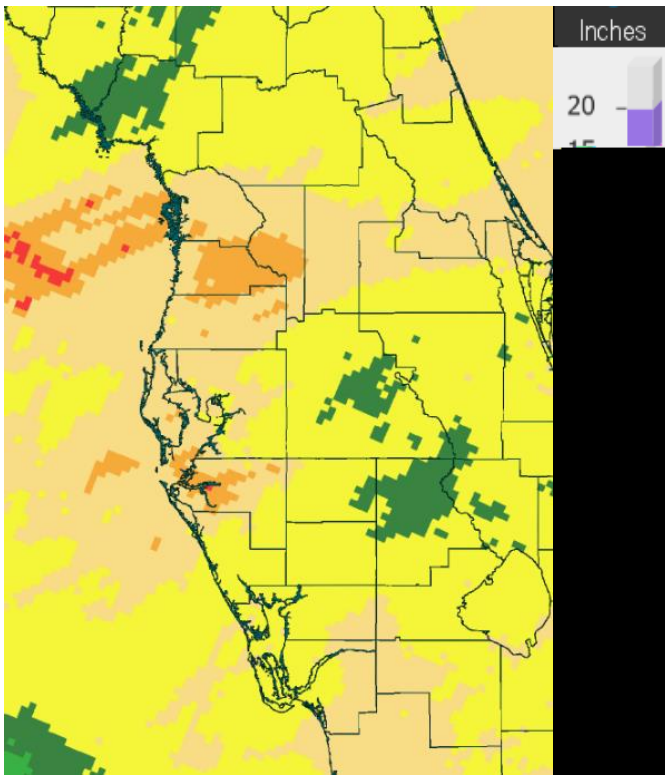
Percent of Normal



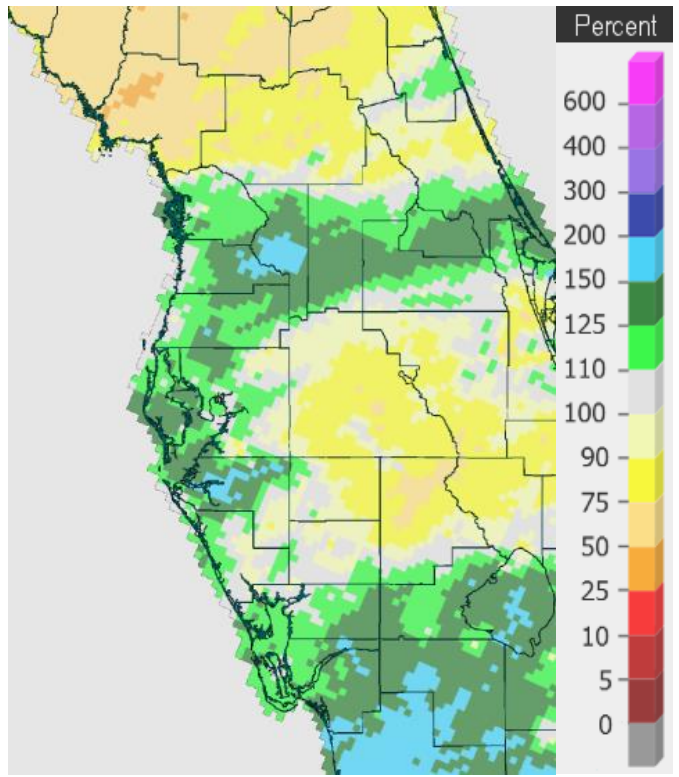
Rainfall January 2024



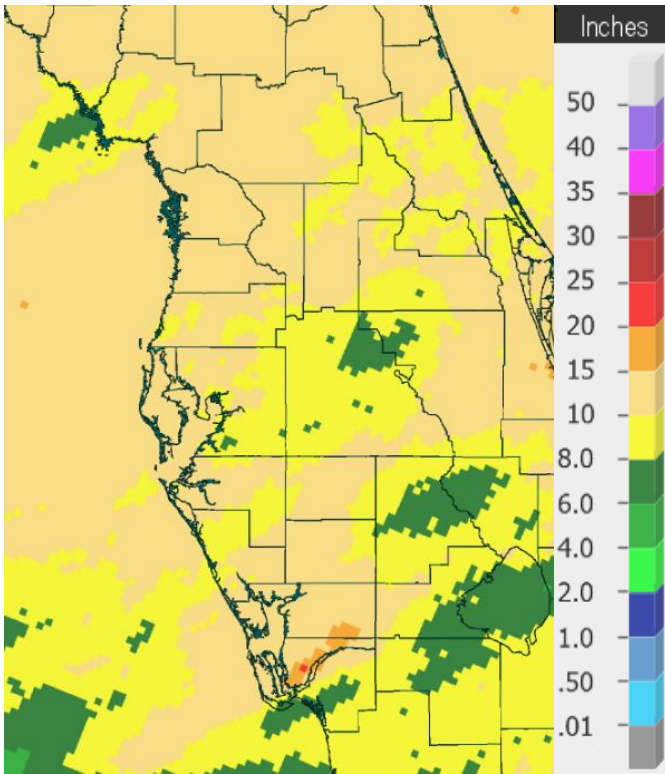
Percent of Normal



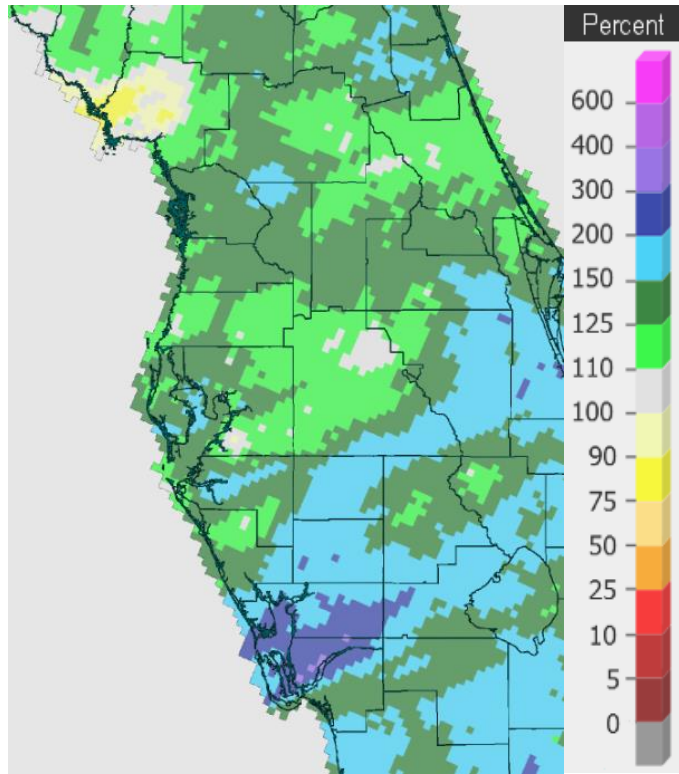
Rainfall February 2024



Percent of Normal



Rainfall Winter 2023-24



Percent of Normal

Below are tables of the Top Ten Warmest, Coolest, Wettest, and Driest Februarys and Winters (December/January/February) at some official NWS locations, which include the average/total for this month/season where available, and the 1991-2020 Normal (average) temperature and rainfall.

CHIEFLAND 5 ESE (records began in July 1956):

| Warmest Februarys | | Coolest Februarys | | Wettest Februarys | | Driest Februarys | |
|-------------------|---------------------|-------------------|---------------------|-------------------|---------------------|------------------|---------------------|
| 1 | 68.8 in 2018 | 1 | 48.4 in 1958 | 1 | 15.20 in 1998 | 1 | 0.12 in 1962 |
| 2 | 65.3 in 2019 | 2 | 49.3 in 2010 | 2 | 9.06 in 2004 | 2 | 0.72 in 1994 |
| 3 | 64.7 in 2023 | | 49.3 in 1968 | 3 | 8.73 in 1970 | 3 | 0.77 in 1980 |
| 4 | 64.2 in 1990 | 4 | 50.0 in 1978 | 4 | 7.75 in 1964 | 4 | 0.78 in 1989 |
| 5 | 64.1 in 1959 | 5 | 52.3 in 1963 | 5 | 7.42 in 1966 | 5 | 0.82 in 1997 |
| 6 | 64.0 in 2017 | 6 | 52.4 in 1964 | 6 | 7.05 in 1965 | 6 | 0.98 in 2022 |
| | 64.0 in 1982 | 7 | 53.0 in 1969 | 7 | 6.55 in 1993 | | 0.98 in 1996 |
| 8 | 63.3 in 1975 | 8 | 53.1 in 1980 | 8 | 6.26 in 1967 | 8 | 1.01 in 1991 |
| | 63.3 in 1957 | 9 | 53.3 in 1977 | 9 | 6.10 in 1963 | 9 | 1.06 in 2000 |
| 10 | 63.1 in 2001 | 10 | 53.5 in 2009 | 10 | 6.01 in 1978 | 10 | 1.21 in 2017 |
| ... | | ... | | ... | | ... | |
| 38 | 57.5 in 2024 | 24 | 57.5 in 2024 | 35 | 2.76 in 2024 | 30 | 2.76 in 2024 |

Normal Temperature for February at CHIF1 = 58.5°

Normal Rainfall for February at CHIF1 = 3.25 in.

| Warmest Winters | | Coolest Winters | | Wettest Winters | | Driest Winters | |
|-----------------|------------------------|-----------------|------------------------|-----------------|-------------------------|----------------|-----------------|
| 1 | 62.0 in 1956-57 | 1 | 50.8 in 1957-58 | 1 | 30.55 in 1997-98 | 1 | 2.18 in 1956-57 |
| 2 | 61.7 in 1971-72 | 2 | 51.7 in 1977-78 | 2 | 26.40 in 1963-64 | 2 | 3.82 in 2021-22 |
| 3 | 61.5 in 1998-99 | | 51.7 in 1963-64 | 3 | 20.46 in 1969-70 | 3 | 3.86 in 2000-01 |
| 4 | 61.1 in 1990-91 | 4 | 52.0 in 1976-77 | 4 | 19.65 in 1964-65 | 4 | 4.21 in 1961-62 |
| 5 | 60.9 in 2019-20 | 5 | 52.1 in 2009-10 | 5 | 17.59 in 1977-78 | 5 | 5.19 in 2016-17 |
| 6 | 60.8 in 1973-74 | 6 | 52.7 in 2010-11 | 6 | 17.58 in 1978-79 | | 5.19 in 1980-81 |
| 7 | 60.5 in 2022-23 | | 52.7 in 1980-81 | 7 | 16.42 in 1965-66 | 7 | 5.26 in 2011-12 |
| 8 | 60.2 in 2017-18 | 8 | 52.9 in 1969-70 | 8 | 16.37 in 2018-19 | 8 | 5.42 in 2004-05 |
| | 60.2 in 1974-75 | 9 | 53.2 in 1968-69 | 9 | 16.27 in 2005-06 | 9 | 5.49 in 1984-85 |
| 10 | 59.6 in 1988-89 | 10 | 53.7 in 2002-03 | 10 | 15.89 in 2013-14 | 10 | 5.75 in 2022-23 |
| | 59.6 in 1964-65 | | 53.7 in 1962-63 | 11 | 15.15 in 1983-84 | | |
| ... | | ... | | 12 | 14.72 in 2023-24 | | |
| 33 | 56.8 in 2023-24 | 26 | 56.8 in 2023-24 | | | | |

Normal Temperature for Winter (Dec/Jan/Feb) at CHIF1 = 57.1°

Normal Rainfall for Winter (Dec/Jan/Feb) at CHIF1 = 10.11 in.

INVERNESS 3 SE (records began in July 1948):

| Warmest Februarys | | Coolest Februarys | | Wettest Februarys | | Driest Februarys | |
|-------------------|---------------------|-------------------|---------------------|-------------------|---------------------|------------------|--------------|
| 1 | 69.4 in 1949 | 1 | 49.7 in 2010 | 1 | 10.21 in 1952 | 1 | 0.46 in 1999 |
| 2 | 68.9 in 2018 | 2 | 50.6 in 1978 | 2 | 6.62 in 1998 | 2 | 0.52 in 1985 |
| 3 | 68.1 in 1959 | 3 | 51.1 in 1958 | 3 | 6.45 in 1960 | 3 | 0.58 in 1976 |
| 4 | 66.9 in 1957 | 4 | 54.0 in 1977 | 4 | 6.25 in 1983 | 4 | 0.73 in 1950 |
| 5 | 66.1 in 2019 | 5 | 54.3 in 1980 | 5 | 6.16 in 1978 | 5 | 0.75 in 1989 |
| 6 | 65.9 in 1956 | 6 | 54.7 in 1968 | 6 | 5.64 in 2006 | 6 | 0.82 in 2009 |
| 7 | 65.8 in 2023 | 7 | 54.8 in 1988 | 7 | 5.56 in 1971 | 7 | 0.95 in 1949 |
| | 65.8 in 1982 | 8 | 54.9 in 2015 | 8 | 5.43 in 1964 | 8 | 0.99 in 2022 |
| 9 | 65.7 in 1975 | 9 | 55.1 in 2009 | 9 | 5.35 in 2003 | | 0.99 in 2005 |
| 10 | 64.9 in 1990 | 10 | 55.3 in 2006 | 10 | 5.34 in 1970 | | 0.99 in 1995 |
| | | | 55.3 in 1979 | ... | | | 0.99 in 1956 |
| | | | 55.3 in 1973 | 22 | 3.61 in 2024 | | |
| ... | | ... | | | | | |
| 43 | 58.7 in 2024 | 26 | 58.7 in 2024 | | | | |

Normal Temperature for February at INVF1 = 58.9°

Normal Rainfall for February at INVF1 = 2.69 in.

| Warmest Winters | | Coolest Winters | | Wettest Winters | | Driest Winters | |
|-----------------|------------------------|-----------------|------------------------|-----------------|-------------------------|----------------|-----------------|
| 1 | 67.0 in 1948-49 | 1 | 52.5 in 2002-03 | 1 | 22.52 in 1997-98 | 1 | 1.98 in 1949-50 |
| 2 | 66.0 in 1949-50 | 2 | 53.1 in 1977-78 | 2 | 17.06 in 1977-78 | 2 | 2.49 in 2004-05 |
| 3 | 65.3 in 1956-57 | | 53.1 in 1976-77 | 3 | 16.66 in 2018-19 | 3 | 2.59 in 1984-85 |
| 4 | 64.1 in 2016-17 | 4 | 53.2 in 2009-10 | 4 | 14.69 in 1969-70 | 4 | 2.98 in 2012-13 |
| 5 | 63.0 in 1971-72 | 5 | 53.5 in 1957-58 | 5 | 14.46 in 1963-64 | 5 | 3.20 in 1956-57 |
| 6 | 62.5 in 1951-52 | 6 | 54.1 in 2010-11 | 6 | 14.06 in 2002-03 | 6 | 3.52 in 1948-49 |
| 7 | 62.3 in 1974-75 | 7 | 55.6 in 1987-88 | 7 | 13.93 in 1951-52 | 7 | 3.56 in 2021-22 |
| | 62.3 in 1964-65 | 8 | 55.9 in 1995-96 | 8 | 12.79 in 1978-79 | 8 | 3.81 in 1975-76 |
| 9 | 62.2 in 1973-74 | 9 | 56.1 in 1963-64 | 9 | 12.70 in 1993-94 | 9 | 3.90 in 2011-12 |
| | 62.2 in 1953-54 | 10 | 56.3 in 2005-06 | 10 | 12.35 in 2023-24 | 10 | 4.02 in 1955-56 |
| ... | | ... | | | | | |
| 27 | 59.3 in 2023-24 | 31 | 59.3 in 2023-24 | | | | |

Normal Temperature for Winter (Dec/Jan/Feb) at INVF1 = 58.0°

Normal Rainfall for Winter (Dec/Jan/Feb) at INVF1 = 8.14 in.

BROOKSVILLE AREA (records began in January 1892):

| Warmest Februarys | Coolest Februarys | Wettest Februarys | Driest Februarys |
|------------------------|------------------------|------------------------|------------------------|
| 1 70.6 in 2018 | 1 50.4 in 2010 | 1 10.15 in 1998 | 1 0.10 in 1911 |
| 2 69.9 in 1927 | 2 52.1 in 1895 | 2 9.59 in 1952 | 2 0.11 in 2017 |
| 3 69.1 in 1932 | 3 52.8 in 1902 | 3 8.84 in 1899 | 3 0.14 in 2000 |
| 4 69.0 in 1949 | 4 52.9 in 1978 | 4 8.72 in 2004 | 4 0.48 in 2023 |
| 5 68.8 in 1944 | 5 54.8 in 1947 | 5 7.37 in 1936 | 5 0.50 in 1948 |
| 6 68.6 in 2019 | 54.8 in 1920 | 6 7.19 in 1983 | 6 0.52 in 1938 |
| 68.6 in 1939 | 7 55.2 in 1901 | 7 7.04 in 1903 | 7 0.53 in 2009 |
| 8 68.4 in 1918 | 8 55.9 in 2009 | 8 6.83 in 1971 | 0.53 in 1939 |
| 9 68.1 in 1959 | 9 56.0 in 1963 | 9 6.78 in 1981 | 9 0.54 in 1999 |
| 10 66.9 in 1975 | 56.0 in 1942 | 10 6.52 in 1946 | 10 0.57 in 2001 |
| 66.9 in 1945 | | | 0.57 in 1943 |
| ... | ... | ... | ... |
| 78 59.8 in 2024 | 38 59.8 in 2024 | 40 3.69 in 2024 | 90 3.69 in 2024 |
| 59.8 in 2005 | 59.8 in 2005 | | |
| 59.8 in 1931 | 59.8 in 1931 | | |

Normal Temperature for February at BKV = 60.6°

Normal Rainfall for February at BKV = 2.57 in.

| Warmest Winters | Coolest Winters | Wettest Winters | Driest Winters |
|---------------------------|---------------------------|----------------------------|--------------------|
| 1 68.2 in 1931-32 | 1 53.8 in 1901-02 | 1 22.83 in 1997-98 | 1 1.09 in 1910-11 |
| 2 67.5 in 1948-49 | 2 54.0 in 2009-10 | 2 17.83 in 1898-99 | 2 1.57 in 1906-07 |
| 3 66.9 in 1949-50 | 3 54.5 in 2010-11 | 3 17.22 in 1935-36 | 3 1.89 in 2011-12 |
| 4 66.1 in 1926-27 | 4 55.0 in 2002-03 | 4 16.98 in 1911-12 | 4 2.44 in 1949-50 |
| 5 65.8 in 1912-13 | 5 55.7 in 1976-77 | 5 16.44 in 1969-70 | 5 2.63 in 1938-39 |
| 6 65.4 in 1936-37 | 6 56.2 in 1969-70 | 6 16.21 in 1902-03 | 6 2.81 in 1999-00 |
| 65.4 in 1932-33 | 7 56.4 in 2003-04 | 7 15.51 in 1963-64 | 7 2.87 in 2008-09 |
| 8 65.2 in 1971-72 | 8 56.7 in 1963-64 | 8 14.93 in 1913-14 | 8 3.02 in 1908-09 |
| 9 64.3 in 1973-74 | 9 56.8 in 1939-40 | 9 14.80 in 2003-04 | 9 3.26 in 1942-43 |
| 10 64.1 in 1974-75 | 56.8 in 1894-95 | 10 14.79 in 1977-78 | 10 3.43 in 1984-85 |
| ... | ... | ... | ... |
| 58 60.3 in 2023-24 | 46 60.3 in 2023-24 | 37 10.22 in 2023-24 | |
| 60.3 in 1923-24 | 60.3 in 1923-24 | 10.22 in 1995-96 | |

Normal Temperature for Winter (Dec/Jan/Feb) at BKV = 59.5°

Normal Rainfall for Winter (Dec/Jan/Feb) at BKV = 8.14 in.

ST LEO (records began in April 1895):

| Warmest Februarys | Coolest Februarys | Wettest Februarys | Driest Februarys |
|------------------------|------------------------|------------------------|------------------------|
| 1 71.2 in 2018 | 1 52.7 in 1958 | 1 11.04 in 1998 | 1 0.01 in 1911 |
| 2 70.2 in 1932 | 2 53.3 in 2010 | 2 9.71 in 1899 | 2 0.14 in 1999 |
| 3 69.5 in 1949 | 3 53.9 in 1978 | 3 9.48 in 1983 | 3 0.24 in 2023 |
| 4 69.4 in 2019 | 4 54.4 in 1947 | 4 8.69 in 1937 | 4 0.25 in 1950 |
| 5 69.1 in 1982 | 5 54.9 in 1968 | 5 8.09 in 1936 | 5 0.32 in 1945 |
| 6 69.0 in 1990 | 6 55.9 in 1912 | 6 7.22 in 1915 | 6 0.40 in 1989 |
| 7 68.9 in 1959 | 7 56.0 in 1942 | 7 6.92 in 1897 | 7 0.42 in 1948 |
| 8 68.7 in 1939 | 8 56.5 in 1902 | 8 6.35 in 1971 | 8 0.44 in 1916 |
| 9 68.2 in 1944 | 9 56.7 in 1964 | 6.35 in 1952 | 9 0.48 in 1938 |
| 10 68.1 in 1962 | 10 57.1 in 1970 | 10 6.31 in 1963 | 10 0.51 in 1922 |
| ... | 57.1 in 1941 | ... | ... |
| ... | 57.1 in 1920 | 44 3.45 in 2024 | 86 3.45 in 2024 |
| 71 61.7 in 2024 | ... | | |
| 61.7 in 1907 | 55 61.7 in 2024 | | |
| | 61.7 in 1907 | | |

Normal Temperature for February at STLF1 = 62.6°
 Normal Rainfall for February at STLF1 = 2.38 in.

| Warmest Winters | Coolest Winters | Wettest Winters | Driest Winters |
|---------------------------|---------------------------|---------------------------|---------------------------|
| 1 68.7 in 1931-32 | 1 54.7 in 1930-31 | 1 28.97 in 1997-98 | 1 1.56 in 1906-07 |
| 2 68.0 in 1948-49 | 2 55.5 in 1957-58 | 2 23.03 in 1898-99 | 2 1.72 in 1910-11 |
| 3 66.6 in 1949-50 | 3 56.3 in 1977-78 | 3 18.02 in 1981-82 | 3 2.07 in 1949-50 |
| 4 66.4 in 1936-37 | 4 56.4 in 1939-40 | 4 17.89 in 2002-03 | 4 2.23 in 1938-39 |
| 5 66.1 in 1956-57 | 5 56.5 in 2009-10 | 5 16.87 in 1969-70 | 5 2.62 in 2011-12 |
| 6 65.8 in 1971-72 | 56.5 in 1976-77 | 6 16.34 in 1935-36 | 6 2.71 in 1975-76 |
| 7 65.7 in 1912-13 | 7 56.9 in 1969-70 | 7 15.61 in 1913-14 | 7 2.81 in 1937-38 |
| 8 65.5 in 1998-99 | 8 57.1 in 2010-11 | 8 14.90 in 1940-41 | 8 2.93 in 2021-22 |
| 9 65.2 in 2007-08 | 9 57.3 in 1927-28 | 9 14.55 in 1902-03 | 9 3.48 in 1915-16 |
| 10 65.1 in 2016-17 | 10 57.5 in 1935-36 | 10 14.40 in 1977-78 | 10 3.54 in 2016-17 |
| 65.1 in 1990-91... | | | |
| ... | ... | 42 9.66 in 2023-24 | 86 9.66 in 2023-24 |
| 67 61.4 in 2023-24 | 53 61.4 in 2023-24 | 9.66 in 1907-08 | 9.66 in 1907-08 |
| 61.4 in 2005-06 | 61.4 in 2005-06 | | |
| 61.4 in 2000-01 | 61.4 in 2000-01 | | |
| 61.4 in 1929-30 | 61.4 in 1929-30 | | |

Normal Temperature for Winter (Dec/Jan/Feb) at STLF1 = 61.5°
 Normal Rainfall for Winter (Dec/Jan/Feb) at STLF1 = 7.97 in.

TARPON SPRINGS (records began in January 1892):

| Warmest Februarys | Coolest Februarys | Wettest Februarys | Driest Februarys |
|-------------------|-------------------|-------------------|------------------|
| 1 71.2 in 2018 | 1 51.8 in 1958 | 1 10.91 in 1998 | 1 0.06 in 1911 |
| 2 70.7 in 1932 | 2 52.0 in 1895 | 2 9.79 in 1899 | 2 0.17 in 2009 |
| 3 69.6 in 2019 | 3 53.0 in 1978 | 3 8.90 in 1936 | 3 0.26 in 1918 |
| 69.6 in 1949 | 4 54.6 in 2010 | 4 8.56 in 1937 | 4 0.32 in 1999 |
| 5 69.3 in 1990 | 5 55.0 in 1968 | 5 8.45 in 1983 | 5 0.38 in 1997 |
| 6 68.9 in 1944 | 6 55.2 in 1902 | 6 7.36 in 1971 | 6 0.40 in 1950 |
| 68.9 in 1939 | 7 55.4 in 1964 | 7 6.52 in 1903 | 7 0.41 in 1989 |
| 8 68.7 in 1927 | 55.4 in 1947 | 8 6.49 in 1963 | 8 0.44 in 1945 |
| 9 68.6 in 1997 | 9 55.5 in 1980 | 9 6.31 in 2004 | 9 0.52 in 1938 |
| 10 68.1 in 1982 | 10 55.7 in 1963 | 10 6.24 in 1970 | 10 0.59 in 1944 |

Average Temperature for February 2024 = A Few Days Unrepresentative
 Normal Temperature for February at TRPF1 = 62.9°

Total Rainfall for February 2024 = A Couple Days Missing
 Normal Rainfall for February at TRPF1 = 2.51 in.

| Warmest Winters | Coolest Winters | Wettest Winters | Driest Winters |
|-------------------|-------------------|---------------------|--------------------|
| 1 70.5 in 1931-32 | 1 54.2 in 1957-58 | 1 29.65 in 1997-98 | 1 0.97 in 1949-50 |
| 2 67.3 in 1949-50 | 2 55.1 in 1963-64 | 2 20.41 in 1935-36 | 2 2.06 in 1910-11 |
| 3 66.0 in 1932-33 | 3 55.8 in 1977-78 | 3 19.40 in 1898-99 | 3 2.08 in 1938-39 |
| 4 65.9 in 2016-17 | 4 56.3 in 1980-81 | 4 18.08 in 1969-70 | 4 2.14 in 1906-07 |
| 5 65.6 in 1990-91 | 5 56.5 in 1962-63 | 5 17.47 in 1983-84 | 5 2.37 in 2000-01 |
| 6 65.5 in 1936-37 | 56.5 in 1939-40 | 6 17.41 in 2002-03 | 6 2.67 in 2008-09 |
| 7 65.3 in 2019-20 | 7 56.6 in 2010-11 | 7 16.44 in 2018-19 | 7 3.02 in 1975-76 |
| 65.3 in 1996-97 | 56.6 in 1901-02 | 8 15.17 in 1902-03 | 8 3.11 in 1934-35 |
| 65.3 in 1926-27 | 9 56.8 in 2009-10 | 9 14.89 in 1963-64 | 9 3.41 in 2021-22 |
| 65.3 in 1912-13 | 56.8 in 1976-77 | 10 14.33 in 1985-86 | 10 3.54 in 1968-69 |
| | 56.8 in 1969-70 | | |

Average Temp for Winter 2023-24 (Dec/Jan/Feb) = Several Days Unrepresentative
 Normal Temperature for Winter (Dec/Jan/Feb) at TRPF1 = 61.8°

Total Rainfall for Winter 2023-24 (Dec/Jan/Feb) = A Couple Days Missing
 Normal Rainfall for Winter (Dec/Jan/Feb) at TRPF1 = 8.28 in.

TAMPA AREA (records began in April 1890):

| Warmest Februarys | Coolest Februarys | Wettest Februarys | Driest Februarys |
|------------------------|------------------------|------------------------|------------------------|
| 1 74.2 in 2018 | 1 52.9 in 1958 | 1 10.92 in 1937 | 1 0.05 in 1911 |
| 2 70.9 in 2019 | 2 53.2 in 1978 | 2 10.82 in 1998 | 2 0.08 in 1918 |
| 3 70.8 in 1932 | 3 54.3 in 1968 | 3 9.09 in 2006 | 3 0.21 in 1950 |
| 4 70.3 in 2023 | 4 54.8 in 1947 | 4 7.95 in 1963 | 4 0.25 in 1932 |
| 5 70.1 in 1949 | 54.8 in 1895 | 5 7.43 in 1936 | 5 0.29 in 1999 |
| 6 69.1 in 1990 | 6 55.0 in 2010 | 6 7.35 in 1983 | 6 0.30 in 2000 |
| 69.1 in 1891 | 7 55.8 in 1969 | 7 6.55 in 2015 | 7 0.34 in 1949 |
| 8 68.9 in 1959 | 8 56.2 in 1912 | 8 6.27 in 1899 | 8 0.41 in 1991 |
| 68.9 in 1927 | 56.2 in 1902 | 9 6.06 in 1903 | 0.41 in 1989 |
| 10 68.8 in 2017 | 10 56.6 in 1980 | 10 5.98 in 1919 | 10 0.43 in 1994 |
| ... | ... | ... | ... |
| 61 63.3 in 2024 | 73 63.3 in 2024 | 46 3.32 in 2024 | 86 3.32 in 2024 |
| 63.3 in 2003 | 63.3 in 2003 | 3.32 in 1984 | 3.32 in 1984 |

Normal Temperature for February at TPA = 64.7°
 Normal Rainfall for February at TPA = 2.62 in.

| Warmest Winters | Coolest Winters | Wettest Winters | Driest Winters |
|---------------------------|---------------------------|----------------------------|--------------------|
| 1 70.3 in 1931-32 | 1 55.2 in 1957-58 | 1 31.03 in 1997-98 | 1 0.51 in 1949-50 |
| 2 68.4 in 2016-17 | 2 55.7 in 1977-78 | 2 17.11 in 2002-03 | 2 1.41 in 1906-07 |
| 68.4 in 1948-49 | 3 56.0 in 1976-77 | 3 15.81 in 2018-19 | 3 1.71 in 1931-32 |
| 4 67.6 in 2021-22 | 4 56.2 in 1980-81 | 4 15.59 in 1898-99 | 4 1.76 in 1975-76 |
| 5 67.0 in 1949-50 | 5 56.5 in 1969-70 | 5 14.86 in 1936-37 | 5 1.86 in 1910-11 |
| 6 66.8 in 2017-18 | 6 56.8 in 1963-64 | 6 14.53 in 1914-15 | 6 2.15 in 1948-49 |
| 7 66.7 in 1936-37 | 7 57.2 in 1939-40 | 7 13.78 in 1902-03 | 7 2.54 in 1938-39 |
| 8 66.5 in 2019-20 | 8 57.3 in 1968-69 | 8 13.77 in 1941-42 | 8 2.67 in 2021-22 |
| 9 66.4 in 2022-23 | 9 57.4 in 1901-02 | 9 13.74 in 1935-36 | 9 2.76 in 1943-44 |
| 10 66.1 in 2011-12 | 10 57.7 in 2009-10 | 10 12.76 in 1963-64 | 10 2.85 in 1934-35 |
| 66.1 in 1912-13 | | ... | |
| ... | ... | 20 11.03 in 2023-24 | |
| 44 63.3 in 2023-24 | 90 63.3 in 2023-24 | | |
| 63.3 in 2020-21 | 63.3 in 2020-21 | | |

Normal Temperature for Winter (Dec/Jan/Feb) at TPA = 63.9°
 Normal Rainfall for Winter (Dec/Jan/Feb) at TPA = 7.83 in.

ST PETERSBURG – ALBERT WHITTED (records began in August 1914):

| Warmest Februarys | Coolest Februarys | Wettest Februarys | Driest Februarys |
|------------------------|------------------------|------------------------|------------------------|
| 1 72.6 in 2018 | 1 55.7 in 1978 | 1 12.71 in 1998 | 1 0.12 in 1918 |
| 2 72.3 in 1932 | 2 55.9 in 2010 | 2 10.93 in 1937 | 2 0.18 in 2001 |
| 3 71.1 in 1949 | 3 57.3 in 1964 | 3 9.06 in 1983 | 3 0.19 in 2023 |
| 4 70.4 in 2023 | 57.3 in 1947 | 4 8.26 in 1963 | 4 0.24 in 1976 |
| 5 70.1 in 2019 | 5 58.3 in 1940 | 5 7.96 in 1936 | 5 0.25 in 1999 |
| 6 70.0 in 1959 | 6 58.8 in 1963 | 6 6.69 in 1946 | 6 0.29 in 2012 |
| 7 69.9 in 1927 | 7 58.9 in 1980 | 7 6.37 in 1972 | 7 0.34 in 1949 |
| 8 69.6 in 1957 | 8 59.0 in 1968 | 8 5.97 in 1964 | 8 0.43 in 1989 |
| 9 69.4 in 1944 | 9 59.3 in 1941 | 9 5.67 in 1958 | 9 0.44 in 1944 |
| 10 69.3 in 1982 | 10 59.5 in 1977 | 10 5.57 in 1919 | 10 0.45 in 1950 |
| 69.3 in 1939 | 59.5 in 1942 | ... | ... |
| ... | ... | 37 2.99 in 2024 | 72 2.99 in 2024 |
| 62 63.8 in 2024 | 46 63.8 in 2024 | | |

Normal Temperature for February at SPG = 64.9°

Normal Rainfall for February at SPG = 2.02 in.

| Warmest Winters | Coolest Winters | Wettest Winters | Driest Winters |
|---------------------------|---------------------------|----------------------------|--------------------|
| 1 72.1 in 1931-32 | 1 58.1 in 1939-40 | 1 32.36 in 1997-98 | 1 0.59 in 1949-50 |
| 2 69.4 in 1948-49 | 2 58.2 in 1963-64 | 2 20.23 in 2002-03 | 2 1.49 in 2016-17 |
| 3 68.3 in 1971-72 | 3 58.5 in 2009-10 | 3 17.14 in 1963-64 | 3 1.51 in 2000-01 |
| 4 68.1 in 1936-37 | 58.5 in 1976-77 | 4 16.95 in 1914-15 | 4 1.54 in 1975-76 |
| 5 67.8 in 1949-50 | 5 58.7 in 1977-78 | 5 15.15 in 1935-36 | 5 1.92 in 2011-12 |
| 6 67.7 in 2016-17 | 6 59.2 in 1980-81 | 6 13.63 in 1947-48 | 6 2.06 in 1938-39 |
| 67.7 in 2012-13 | 7 59.3 in 1962-63 | 7 13.50 in 1969-70 | 7 2.11 in 1955-56 |
| 8 67.6 in 1956-57 | 8 59.8 in 1969-70 | 8 13.37 in 1936-37 | 8 2.21 in 1934-35 |
| 9 67.5 in 1932-33 | 9 60.1 in 1930-31 | 9 13.14 in 1957-58 | 9 2.23 in 2021-22 |
| 10 67.1 in 2021-22 | 10 60.5 in 2002-03 | 10 12.64 in 1945-46 | 10 2.35 in 1948-49 |
| 67.1 in 1926-27 | | ... | |
| ... | ... | 22 10.58 in 2023-24 | |
| 61 63.2 in 2023-24 | 35 63.2 in 2023-24 | | |
| 63.2 in 2014-15 | 63.2 in 2014-15 | | |
| 63.2 in 1940-41 | 63.2 in 1940-41 | | |
| 63.2 in 1919-20 | 63.2 in 1919-20 | | |

Normal Temperature for Winter (Dec/Jan/Feb) at SPG = 64.1°

Normal Rainfall for Winter (Dec/Jan/Feb) at SPG = 6.93 in.

PLANT CITY (records began in September 1892):

| Warmest Februarys | | Coolest Februarys | | Wettest Februarys | | Driest Februarys | |
|-------------------|---------------------|-------------------|---------------------|-------------------|---------------------|------------------|---------------------|
| 1 | 73.2 in 2018 | 1 | 54.6 in 1958 | 1 | 9.04 in 1936 | 1 | 0.00 in 1911 |
| 2 | 71.9 in 2019 | 2 | 54.9 in 2010 | 2 | 8.87 in 1899 | 2 | Trace in 1918 |
| 3 | 71.4 in 2023 | 3 | 55.9 in 1978 | 3 | 8.57 in 1983 | 3 | 0.05 in 1989 |
| 4 | 70.6 in 1949 | 4 | 56.0 in 1902 | 4 | 8.49 in 1998 | 4 | 0.09 in 1976 |
| 5 | 70.1 in 1959 | 5 | 56.2 in 1947 | 5 | 7.97 in 1937 | 5 | 0.25 in 1950 |
| 6 | 69.6 in 1918 | 6 | 56.7 in 1968 | 6 | 7.56 in 1963 | 6 | 0.28 in 1932 |
| 7 | 69.0 in 2017 | | 56.7 in 1942 | 7 | 6.77 in 1919 | 7 | 0.31 in 2000 |
| 8 | 68.9 in 1982 | | 56.7 in 1941 | 8 | 6.13 in 1972 | 8 | 0.36 in 1945 |
| 9 | 68.8 in 2021 | 9 | 56.9 in 1931 | 9 | 5.98 in 2015 | 9 | 0.37 in 1949 |
| | 68.8 in 1939 | 10 | 57.1 in 1912 | 10 | 5.73 in 1992 | | 0.37 in 1944 |
| ... | | ... | | ... | | ... | |
| 54 | 63.0 in 2024 | 63 | 63.0 in 2024 | 61 | 2.58 in 2024 | 67 | 2.58 in 2024 |
| | 63.0 in 2004 | | 63.0 in 2004 | | | | |
| | 63.0 in 1999 | | 63.0 in 1999 | | | | |
| | 63.0 in 1946 | | 63.0 in 1946 | | | | |

Normal Temperature for February at PLCF1 = 65.3°
 Normal Rainfall for February at PLCF1 = 2.33 in.

| Warmest Winters | | Coolest Winters | | Wettest Winters | | Driest Winters | |
|-----------------|------------------------|-----------------|------------------------|-----------------|------------------------|----------------|------------------------|
| 1 | 68.7 in 1948-49 | 1 | 55.2 in 1930-31 | 1 | 26.68 in 1997-98 | 1 | 1.03 in 1906-07 |
| 2 | 67.3 in 2019-20 | 2 | 56.5 in 1935-36 | 2 | 17.28 in 1898-99 | 2 | 1.06 in 1975-76 |
| 3 | 67.2 in 1971-72 | 3 | 56.6 in 1939-40 | 3 | 17.16 in 1935-36 | 3 | 2.04 in 1910-11 |
| 4 | 67.0 in 2022-23 | | 56.6 in 1901-02 | 4 | 16.72 in 2002-03 | 4 | 2.15 in 1938-39 |
| 5 | 66.8 in 1956-57 | 5 | 56.7 in 1957-58 | 5 | 14.99 in 2018-19 | 5 | 2.19 in 1908-09 |
| 6 | 66.2 in 1949-50 | 6 | 57.2 in 1980-81 | 6 | 14.70 in 1914-15 | 6 | 2.39 in 2011-12 |
| 7 | 66.1 in 2012-13 | 7 | 57.5 in 1976-77 | 7 | 14.27 in 1905-06 | 7 | 2.68 in 1917-18 |
| 8 | 66.0 in 2018-19 | 8 | 57.9 in 2009-10 | 8 | 14.09 in 1978-79 | 8 | 2.75 in 1942-43 |
| 9 | 65.8 in 2015-16 | 9 | 58.2 in 1963-64 | 9 | 13.94 in 1963-64 | 9 | 2.89 in 1904-05 |
| 10 | 65.7 in 2021-22 | 10 | 58.3 in 1969-70 | 10 | 13.57 in 1925-26 | 10 | 3.19 in 1948-49 |
| | | | 58.3 in 1895-96 | ... | | ... | |
| ... | | ... | | 43 | 8.60 in 2023-24 | 83 | 8.60 in 2023-24 |
| 34 | 63.4 in 2023-24 | 74 | 63.4 in 2023-24 | | | | |
| | 63.4 in 1991-92 | | 63.4 in 1991-92 | | | | |
| | 63.4 in 1989-90 | | 63.4 in 1989-90 | | | | |
| | 63.4 in 1893-94 | | 63.4 in 1893-94 | | | | |

Normal Temperature for Winter (Dec/Jan/Feb) at PLCF1 = 64.2°
 Normal Rainfall for Winter (Dec/Jan/Feb) at PLCF1 = 7.87 in.

LAKELAND AREA (records began in January 1915):

| Warmest Februarys | Coolest Februarys | Wettest Februarys | Driest Februarys |
|------------------------|------------------------|------------------------|------------------------|
| 1 72.8 in 2018 | 1 52.8 in 1958 | 1 9.60 in 1983 | 1 Trace in 1918 |
| 2 71.6 in 1932 | 2 54.7 in 1947 | 2 8.40 in 1936 | 2 0.14 in 1989 |
| 3 71.1 in 2019 | 3 55.0 in 1978 | 3 8.25 in 1998 | 3 0.17 in 1945 |
| 4 70.7 in 2023 | 4 55.8 in 1968 | 4 7.21 in 1937 | 4 0.20 in 1916 |
| 5 70.4 in 1918 | 5 55.9 in 2010 | 5 6.59 in 1963 | 5 0.25 in 1932 |
| 6 70.1 in 1990 | 6 56.7 in 1941 | 6 5.89 in 1915 | 6 0.26 in 1949 |
| 70.1 in 1949 | 7 56.8 in 1942 | 7 5.65 in 2015 | 0.26 in 1935 |
| 8 69.8 in 1982 | 8 57.3 in 1964 | 8 5.55 in 1919 | 8 0.27 in 1976 |
| 9 69.6 in 1927 | 57.3 in 1963 | 9 5.36 in 1972 | 9 0.46 in 2023 |
| 10 69.3 in 1939 | 10 57.9 in 1973 | 10 5.11 in 1992 | 10 0.48 in 1999 |
| ... | 57.9 in 1970 | ... | 0.48 in 1944 |
| ... | ... | ... | ... |
| 59 63.4 in 2024 | 51 63.4 in 2024 | 42 2.78 in 2024 | 69 2.78 in 2024 |

Normal Temperature for February at LLDF1 = 65.0°
 Normal Rainfall for February at LLDF1 = 2.33 in.

| Warmest Winters | Coolest Winters | Wettest Winters | Driest Winters |
|---------------------------|---------------------------|---------------------------|---------------------------|
| 1 70.9 in 1931-32 | 1 55.2 in 1957-58 | 1 23.72 in 1997-98 | 1 1.49 in 1934-35 |
| 2 68.1 in 1948-49 | 2 56.6 in 1976-77 | 2 19.49 in 2002-03 | 2 1.64 in 1975-76 |
| 3 68.0 in 2016-17 | 3 56.8 in 1977-78 | 3 16.60 in 1935-36 | 3 1.82 in 1938-39 |
| 4 66.9 in 1949-50 | 4 57.1 in 1969-70 | 4 15.22 in 2018-19 | 4 2.04 in 1927-28 |
| 5 66.7 in 1936-37 | 5 57.4 in 1963-64 | 5 12.94 in 1978-79 | 5 2.10 in 1943-44 |
| 66.7 in 1932-33 | 57.4 in 1939-40 | 6 12.66 in 1982-83 | 6 2.21 in 1931-32 |
| 7 66.6 in 2022-23 | 7 58.2 in 1982-83 | 7 11.97 in 1925-26 | 7 2.44 in 2021-22 |
| 66.6 in 2019-20 | 58.2 in 1980-81 | 8 11.96 in 1963-64 | 8 2.47 in 1948-49 |
| 9 66.4 in 1956-57 | 9 58.6 in 1962-63 | 9 11.81 in 1965-66 | 9 2.56 in 2011-12 |
| 10 66.3 in 1971-72 | 10 58.8 in 2009-10 | 10 11.58 in 1992-93 | 10 2.71 in 2000-01 |
| ... | ... | ... | ... |
| 41 63.7 in 2023-24 | 63 63.7 in 2023-24 | 32 8.71 in 2023-24 | 78 8.71 in 2023-24 |

Normal Temperature for Winter (Dec/Jan/Feb) at LLDF1 = 64.0°
 Normal Rainfall for Winter (Dec/Jan/Feb) at LLDF1 = 7.93 in.

BARTOW (records began in June 1892):

| Warmest Februarys | | Coolest Februarys | | Wettest Februarys | | Driest Februarys | |
|-------------------|---------------------|-------------------|---------------------|-------------------|---------------------|------------------|---------------------|
| 1 | 71.6 in 2018 | 1 | 54.1 in 1895 | 1 | 9.15 in 1998 | 1 | 0.00 in 1911 |
| 2 | 71.0 in 1949 | 2 | 54.8 in 1958 | 2 | 9.12 in 1936 | 2 | 0.03 in 1932 |
| 3 | 70.1 in 1959 | 3 | 54.9 in 1912 | 3 | 8.33 in 1983 | 3 | 0.07 in 2001 |
| 4 | 69.7 in 2023 | 4 | 56.2 in 1968 | 4 | 8.11 in 1963 | 4 | 0.14 in 1916 |
| | 69.7 in 2014 | 5 | 56.3 in 2010 | 5 | 7.30 in 1899 | 5 | 0.21 in 2000 |
| 6 | 69.6 in 2019 | 6 | 56.4 in 1947 | 6 | 6.41 in 1937 | 6 | 0.24 in 1989 |
| | 69.6 in 1990 | 7 | 57.8 in 1901 | 7 | 6.33 in 1913 | 7 | 0.26 in 1945 |
| | 69.6 in 1982 | 8 | 57.9 in 1980 | 8 | 6.23 in 1960 | 8 | 0.32 in 2023 |
| 9 | 69.5 in 2001 | 9 | 58.0 in 1977 | 9 | 6.16 in 1972 | 9 | 0.33 in 1950 |
| | 69.5 in 1903 | 10 | 58.1 in 1964 | 10 | 5.76 in 1924 | 10 | 0.37 in 2009 |
| ... | | ... | | ... | | ... | |
| 55 | 62.6 in 2024 | 37 | 62.6 in 2024 | 69 | 2.09 in 2024 | 64 | 2.09 in 2024 |
| | 62.6 in 1981 | | 62.6 in 1981 | | | | |
| | 62.6 in 1974 | | 62.6 in 1974 | | | | |

Normal Temperature for February at BARF1 = 64.0°

Normal Rainfall for February at BARF1 = 2.10 in.

| Warmest Winters | | Coolest Winters | | Wettest Winters | | Driest Winters | |
|-----------------|------------------------|-----------------|------------------------|-----------------|------------------------|----------------|------------------------|
| 1 | 68.9 in 1948-49 | 1 | 56.7 in 1957-58 | 1 | 24.41 in 1997-98 | 1 | 1.57 in 1938-39 |
| 2 | 67.5 in 2013-14 | 2 | 57.8 in 1909-10 | 2 | 19.39 in 2002-03 | 2 | 1.65 in 1943-44 |
| 3 | 66.8 in 1949-50 | 3 | 58.0 in 1980-81 | 3 | 18.87 in 1935-36 | 3 | 1.72 in 1934-35 |
| 4 | 66.7 in 2016-17 | 4 | 58.5 in 1969-70 | 4 | 16.42 in 1983-84 | 4 | 1.77 in 2011-12 |
| 5 | 66.3 in 1998-99 | 5 | 58.7 in 1963-64 | 5 | 16.18 in 1914-15 | 5 | 1.83 in 1984-85 |
| | 66.3 in 1956-57 | 6 | 59.4 in 2010-11 | 6 | 16.06 in 1905-06 | 6 | 1.89 in 1910-11 |
| 7 | 66.2 in 1971-72 | 7 | 59.5 in 1962-63 | 7 | 15.37 in 1898-99 | 7 | 2.03 in 2000-01 |
| 8 | 65.8 in 1988-89 | 8 | 59.7 in 1903-04 | 8 | 15.02 in 1925-26 | 8 | 2.15 in 1915-16 |
| | 65.8 in 1974-75 | 9 | 59.8 in 1911-12 | 9 | 13.59 in 1957-58 | 9 | 2.16 in 1949-50 |
| | 65.8 in 1912-13 | 10 | 59.9 in 1968-69 | 10 | 13.23 in 1965-66 | 10 | 2.22 in 1904-05 |
| | | | 59.9 in 1954-55 | ... | | ... | |
| ... | | ... | | 40 | 8.60 in 2023-24 | 88 | 8.60 in 2023-24 |
| 39 | 62.5 in 2023-24 | 35 | 62.5 in 2023-24 | | 8.60 in 1964-65 | | 8.60 in 1964-65 |

Normal Temperature for Winter (Dec/Jan/Feb) at BARF1 = 63.0°

Normal Rainfall for Winter (Dec/Jan/Feb) at BARF1 = 6.92 in.

WINTER HAVEN AREA (records began in March 1941):

| Warmest Februarys | Coolest Februarys | Wettest Februarys | Driest Februarys |
|------------------------|------------------------|------------------------|------------------------|
| 1 72.8 in 2019 | 1 54.0 in 1958 | 1 10.61 in 1998 | 1 0.20 in 1945 |
| 2 72.7 in 2018 | 2 55.0 in 2010 | 2 7.82 in 1983 | 2 0.32 in 1989 |
| 3 71.5 in 1949 | 3 55.5 in 1978 | 3 6.57 in 1960 | 3 0.33 in 1944 |
| 4 70.1 in 1990 | 4 56.4 in 1968 | 4 6.03 in 1963 | 4 0.41 in 2011 |
| 5 70.0 in 1975 | 5 56.8 in 1969 | 5 5.86 in 2021 | 5 0.44 in 1950 |
| 6 69.7 in 2023 | 6 57.0 in 1947 | 5.86 in 2015 | 6 0.54 in 2009 |
| 7 69.4 in 1982 | 7 57.9 in 1964 | 7 5.49 in 1957 | 7 0.56 in 2000 |
| 69.4 in 1959 | 8 58.5 in 1980 | 8 5.08 in 2002 | 8 0.57 in 2023 |
| 9 69.0 in 1997 | 9 58.9 in 1977 | 9 5.05 in 1972 | 9 0.58 in 1949 |
| 10 68.9 in 1962 | 10 59.0 in 1963 | 10 4.73 in 1971 | 10 0.60 in 1954 |
| ... | ... | ... | ... |
| 38 63.2 in 2024 | 34 63.2 in 2024 | 41 1.97 in 2024 | 41 1.97 in 2024 |
| 63.2 in 1995 | 63.2 in 1995 | | |
| 63.2 in 1987 | 63.2 in 1987 | | |

Normal Temperature for February at GIF = 65.1°
 Normal Rainfall for February at GIF = 2.44 in.

| Warmest Winters | Coolest Winters | Wettest Winters | Driest Winters |
|---------------------------|---------------------------|---------------------------|---------------------------|
| 1 69.4 in 1948-49 | 1 56.6 in 1957-58 | 1 24.22 in 1997-98 | 1 1.75 in 1984-85 |
| 2 67.8 in 1949-50 | 2 56.9 in 1976-77 | 2 16.55 in 2002-03 | 2 1.83 in 1943-44 |
| 3 67.5 in 1971-72 | 3 57.7 in 1963-64 | 3 12.78 in 1965-66 | 3 2.00 in 2011-12 |
| 4 67.4 in 2016-17 | 4 58.0 in 2009-10 | 4 12.35 in 1963-64 | 4 2.28 in 1975-76 |
| 67.4 in 1990-91 | 5 58.1 in 1977-78 | 5 12.17 in 1957-58 | 5 2.79 in 1948-49 |
| 67.4 in 1988-89 | 6 58.6 in 1968-69 | 6 12.10 in 1947-48 | 6 3.00 in 2012-13 |
| 7 66.7 in 2022-23 | 7 58.7 in 2010-11 | 7 11.84 in 2018-19 | 7 3.09 in 2000-01 |
| 66.7 in 2019-20 | 8 59.1 in 1969-70 | 8 11.75 in 1983-84 | 8 3.25 in 2021-22 |
| 9 66.4 in 1956-57 | 9 59.6 in 1962-63 | 9 11.72 in 1978-79 | 9 3.53 in 2017-18 |
| 10 66.3 in 2021-22 | 10 60.6 in 1975-76 | 10 10.68 in 1977-78 | 10 3.54 in 1949-50 |
| ... | ... | ... | ... |
| 33 62.9 in 2023-24 | 27 62.9 in 2023-24 | 32 7.57 in 2023-24 | 48 7.57 in 2023-24 |

Normal Temperature for Winter (Dec/Jan/Feb) at GIF = 64.0°
 Normal Rainfall for Winter (Dec/Jan/Feb) at GIF = 7.61 in.

SARASOTA-BRADENTON AREA (records began in January 1911):

| Warmest Februarys | Coolest Februarys | Wettest Februarys | Driest Februarys |
|------------------------|------------------------|------------------------|------------------------|
| 1 71.9 in 2018 | 1 54.4 in 1958 | 1 10.16 in 1983 | 1 Trace in 1911 |
| 2 71.1 in 2019 | 2 54.8 in 1978 | 2 9.29 in 1963 | 2 0.05 in 2001 |
| 3 70.5 in 1959 | 3 55.7 in 2010 | 3 7.34 in 1915 | 3 0.11 in 1950 |
| 4 69.7 in 1949 | 4 56.3 in 1977 | 4 7.13 in 1992 | 4 0.13 in 1989 |
| 5 69.4 in 2023 | 5 57.3 in 1980 | 5 6.65 in 1936 | 5 0.15 in 2023 |
| 6 69.4 in 1990 | 6 57.3 in 1912 | 6 6.04 in 1937 | 6 0.15 in 1932 |
| 7 69.1 in 1932 | 7 57.7 in 1968 | 7 5.92 in 1942 | 7 0.20 in 1918 |
| 8 68.4 in 1982 | 8 58.2 in 1942 | 8 5.91 in 1998 | 8 0.21 in 1949 |
| 9 68.3 in 1939 | 9 58.4 in 1969 | 9 5.80 in 1964 | 9 0.25 in 1945 |
| 10 68.2 in 2012 | 10 58.5 in 1941 | 10 5.73 in 1947 | 10 0.27 in 1944 |
| 11 68.2 in 2001 | 11 58.5 in 1941 | 11 5.73 in 1947 | 11 0.27 in 1944 |
| ... | ... | ... | ... |
| 55 63.4 in 2024 | 55 63.4 in 2024 | 37 3.26 in 2024 | 78 3.26 in 2024 |
| 63.4 in 2004 | 63.4 in 2004 | | |
| 63.4 in 1985 | 63.4 in 1985 | | |

Normal Temperature for February at SRQ = 64.8°

Normal Rainfall for February at SRQ = 1.92 in.

| Warmest Winters | Coolest Winters | Wettest Winters | Driest Winters |
|---------------------------|---------------------------|----------------------------|--------------------|
| 1 69.1 in 1931-32 | 1 55.8 in 1976-77 | 1 28.11 in 1997-98 | 1 0.14 in 1949-50 |
| 2 67.9 in 1949-50 | 2 56.9 in 1977-78 | 2 19.08 in 1914-15 | 2 1.26 in 2000-01 |
| 3 67.9 in 1948-49 | 3 57.1 in 1980-81 | 3 14.94 in 1935-36 | 3 1.35 in 1975-76 |
| 4 67.3 in 2019-20 | 4 57.3 in 1957-58 | 4 14.44 in 2002-03 | 4 1.69 in 1948-49 |
| 5 67.0 in 2016-17 | 5 57.6 in 1939-40 | 5 14.38 in 1977-78 | 5 1.88 in 1931-32 |
| 6 66.9 in 1936-37 | 6 58.0 in 1930-31 | 6 13.92 in 1913-14 | 6 1.90 in 2011-12 |
| 7 66.4 in 1956-57 | 7 58.2 in 2010-11 | 7 13.71 in 1992-93 | 7 2.00 in 1934-35 |
| 8 66.3 in 2018-19 | 8 58.6 in 2009-10 | 8 13.61 in 1963-64 | 8 2.07 in 2021-22 |
| 9 66.2 in 2022-23 | 9 59.0 in 1963-64 | 9 13.36 in 1982-83 | 9 2.14 in 1938-39 |
| 10 66.1 in 2007-08 | 10 59.5 in 1969-70 | 10 12.99 in 1957-58 | 10 2.86 in 1961-62 |
| 11 66.1 in 2007-08 | 11 59.5 in 1935-36 | 11 12.39 in 2018-19 | |
| 12 66.1 in 2007-08 | 12 59.5 in 1935-36 | 12 12.06 in 1930-31 | |
| ... | ... | 13 11.94 in 1958-59 | |
| 33 64.3 in 2023-24 | 69 64.3 in 2023-24 | 14 11.53 in 1962-63 | |
| 64.3 in 2020-21 | 64.3 in 2020-21 | 15 11.19 in 2023-24 | |
| 64.3 in 1970-71 | 64.3 in 1970-71 | | |
| 64.3 in 1926-27 | 64.3 in 1926-27 | | |

Normal Temperature for Winter (Dec/Jan/Feb) at SRQ = 64.1°

Normal Rainfall for Winter (Dec/Jan/Feb) at SRQ = 7.04 in.

VENICE (records began in May 1955):

| Warmest Februarys | Coolest Februarys | Wettest Februarys | Driest Februarys |
|------------------------|------------------------|------------------------|------------------|
| 1 72.5 in 2018 | 1 54.2 in 1958 | 1 6.36 in 1957 | 1 0.00 in 2001 |
| 2 70.7 in 2019 | 2 55.0 in 1978 | 2 5.63 in 1998 | 2 0.10 in 1999 |
| 3 70.5 in 2023 | 3 57.2 in 1980 | 3 5.62 in 1978 | 3 0.15 in 1989 |
| 4 70.1 in 1959 | 4 58.1 in 1977 | 4 5.51 in 1963 | 4 0.16 in 2023 |
| 5 69.8 in 2012 | 5 58.3 in 1973 | 5 5.47 in 1972 | 5 0.29 in 1988 |
| 6 69.8 in 2001 | 6 58.8 in 1968 | 6 4.92 in 2002 | 6 0.30 in 1997 |
| 7 68.5 in 1997 | 7 58.9 in 2010 | 7 4.92 in 1964 | 7 0.36 in 1962 |
| 8 68.2 in 2021 | 8 59.0 in 1964 | 8 4.57 in 2015 | 8 0.39 in 2011 |
| 9 68.2 in 1994 | 9 59.7 in 1969 | 9 4.37 in 1992 | 9 0.41 in 1994 |
| 10 68.0 in 1989 | 10 60.3 in 2015 | 10 4.26 in 1960 | 10 0.60 in 2000 |
| ... | 60.3 in 1963 | ... | |
| ... | ... | 23 2.91 in 2024 | |
| 34 63.2 in 2024 | 28 63.2 in 2024 | | |

Normal Temperature for February at VNCF1 = 64.6°

Normal Rainfall for February at VNCF1 = 2.00 in.

| Warmest Winters | Coolest Winters | Wettest Winters | Driest Winters |
|---------------------------|---------------------------|----------------------------|--------------------|
| 1 68.3 in 1988-89 | 1 57.0 in 1976-77 | 1 19.42 in 1997-98 | 1 1.94 in 2011-12 |
| 2 68.1 in 1971-72 | 2 57.2 in 1957-58 | 2 14.71 in 1957-58 | 2 1.99 in 2021-22 |
| 3 67.9 in 2016-17 | 3 57.5 in 1977-78 | 3 12.68 in 2015-16 | 1.99 in 2000-01 |
| 4 67.9 in 2012-13 | 4 59.2 in 1975-76 | 4 12.65 in 1977-78 | 4 2.18 in 2016-17 |
| 5 67.5 in 2011-12 | 5 59.6 in 1963-64 | 5 12.35 in 2018-19 | 5 2.21 in 1975-76 |
| 6 67.1 in 2022-23 | 6 59.7 in 1969-70 | 6 12.01 in 1972-73 | 6 2.48 in 2022-23 |
| 7 67.0 in 1998-99 | 7 60.5 in 1962-63 | 7 11.45 in 1963-64 | 7 2.61 in 1961-62 |
| 8 66.6 in 2019-20 | 8 60.6 in 2010-11 | 8 11.34 in 1965-66 | 8 2.70 in 1984-85 |
| 9 66.2 in 1996-97 | 9 60.7 in 1979-80 | 9 11.20 in 2009-10 | 9 3.19 in 2012-13 |
| 10 65.9 in 2017-18 | 10 60.9 in 2002-03 | 10 11.18 in 2023-24 | 10 3.25 in 1996-97 |
| ... | 60.9 in 1968-69 | | 3.25 in 1973-74 |
| ... | ... | | |
| 24 64.0 in 2023-24 | 34 64.0 in 2023-24 | | |
| 64.0 in 1986-87 | 64.0 in 1986-87 | | |

Normal Temperature for Winter (Dec/Jan/Feb) at VNCF1 = 63.8°

Normal Rainfall for Winter (Dec/Jan/Feb) at VNCF1 = 6.99 in.

MYAKKA RIVER STATE PARK (Temperature records began in March 1956 and
 Rainfall records began in September 1943):

| Warmest Februarys | Coolest Februarys | Wettest Februarys | Driest Februarys |
|-------------------|------------------------|------------------------|------------------------|
| 1 72.3 in 2018 | 1 52.7 in 1958 | 1 11.28 in 1998 | 1 Trace in 2001 |
| 2 71.7 in 2019 | 2 54.9 in 1968 | 2 9.55 in 1983 | 2 0.01 in 1950 |
| 3 70.3 in 1982 | 3 56.7 in 1963 | 3 6.01 in 1963 | 3 0.02 in 1999 |
| 4 70.0 in 1997 | 4 56.9 in 2010 | 4 5.88 in 1981 | 4 0.23 in 1989 |
| 5 69.7 in 1992 | 5 57.0 in 1978 | 5 5.49 in 1978 | 5 0.28 in 1944 |
| 6 69.4 in 1959 | 6 57.9 in 1973 | 6 5.41 in 1957 | 6 0.30 in 2023 |
| 7 69.1 in 2001 | 7 58.6 in 1980 | 7 5.33 in 2015 | 7 0.32 in 2011 |
| 8 68.9 in 2012 | 8 58.9 in 1977 | 8 5.21 in 2002 | 8 0.34 in 1949 |
| 68.9 in 1994 | 9 60.5 in 2009 | 9 4.97 in 1961 | 9 0.41 in 1945 |
| 10 68.7 in 1990 | 10 60.9 in 2015 | 10 4.62 in 1972 | 10 0.44 in 1948 |
| | 11 61.1 in 2024 | ... | ... |
| | | 26 3.10 in 2024 | 55 3.10 in 2024 |

Normal Temperature for February at MKCF1 = 65.0°
 Normal Rainfall for February at MKCF1 = 2.44 in.

| Warmest Winters | Coolest Winters | Wettest Winters | Driest Winters |
|--------------------|---------------------------|----------------------------|--------------------|
| 1 68.4 in 2016-17 | 1 57.2 in 1962-63 | 1 27.20 in 1997-98 | 1 0.04 in 1949-50 |
| 2 66.7 in 1971-72 | 2 58.2 in 1976-77 | 2 16.36 in 1977-78 | 2 1.64 in 1943-44 |
| 3 66.6 in 1998-99 | 3 58.5 in 1980-81 | 3 14.36 in 2015-16 | 3 1.68 in 2000-01 |
| 4 66.5 in 1992-93 | 4 58.9 in 1977-78 | 4 14.27 in 1978-79 | 4 1.77 in 1948-49 |
| 5 66.4 in 1991-92 | 5 59.4 in 2002-03 | 5 13.83 in 1992-93 | 5 2.08 in 2011-12 |
| 6 66.3 in 2012-13 | 6 59.6 in 2009-10 | 6 13.60 in 1972-73 | 6 2.14 in 1984-85 |
| 7 66.1 in 2018-19 | 7 59.7 in 2010-11 | 7 13.28 in 1982-83 | 7 2.26 in 1944-45 |
| 66.1 in 2013-14 | 59.7 in 1960-61 | 8 12.66 in 1957-58 | 8 2.49 in 2021-22 |
| 66.1 in 1990-91 | 9 61.3 in 1975-76 | 9 12.60 in 2018-19 | 9 2.50 in 2022-23 |
| 10 66.0 in 2011-12 | 10 61.6 in 2000-01 | 10 12.09 in 2003-04 | 10 2.51 in 1975-76 |
| 66.0 in 1974-75 | 11 61.8 in 1979-80 | 11 11.64 in 1983-84 | |
| | 61.8 in 1972-73 | 12 11.60 in 1986-87 | |
| | 13 61.9 in 2023-24 | 13 11.49 in 1958-59 | |
| | 61.9 in 2008-09 | 14 10.95 in 2002-03 | |
| | 61.9 in 1987-88 | 15 10.87 in 2009-10 | |
| | | 16 10.40 in 2023-24 | |

Normal Temperature for Winter (Dec/Jan/Feb) at MKCF1 = 64.0°
 Normal Rainfall for Winter (Dec/Jan/Feb) at MKCF1 = 7.80 in.

WAUCHULA 2 N (records began in January 1933):

| Warmest Februarys | | Coolest Februarys | | Wettest Februarys | | Driest Februarys | |
|-------------------|---------------------|-------------------|---------------------|-------------------|---------------------|------------------|---------------------|
| 1 | 71.1 in 1949 | 1 | 46.7 in 2010 | 1 | 8.92 in 1936 | 1 | 0.00 in 2001 |
| 2 | 70.8 in 2018 | 2 | 54.4 in 1958 | 2 | 8.82 in 1998 | | 0.00 in 2000 |
| 3 | 70.7 in 1939 | 3 | 56.3 in 1978 | 3 | 7.99 in 1983 | 3 | 0.19 in 1945 |
| 4 | 70.1 in 1959 | 4 | 57.1 in 1947 | 4 | 7.37 in 1963 | 4 | 0.22 in 1989 |
| 5 | 69.8 in 1933 | 5 | 57.3 in 1968 | 5 | 6.29 in 1992 | 5 | 0.30 in 1997 |
| 6 | 69.5 in 1982 | 6 | 58.3 in 2015 | 6 | 6.03 in 2002 | 6 | 0.33 in 1950 |
| 7 | 69.4 in 1990 | 7 | 58.5 in 2007 | 7 | 5.46 in 1960 | 7 | 0.45 in 2009 |
| 8 | 69.3 in 1975 | | 58.5 in 1942 | 8 | 5.34 in 1942 | | 0.45 in 1949 |
| 9 | 69.1 in 2019 | 9 | 58.7 in 1980 | 9 | 5.26 in 1937 | 9 | 0.46 in 2023 |
| 10 | 69.0 in 2023 | 10 | 58.9 in 1964 | 10 | 5.24 in 1952 | 10 | 0.52 in 2018 |
| ... | | ... | | ... | | ... | |
| 60 | 61.3 in 2024 | 29 | 61.3 in 2024 | 50 | 2.00 in 2024 | 41 | 2.00 in 2024 |

Normal Temperature for February at WAUF1 = 62.9°
 Normal Rainfall for February at WAUF1 = 2.18 in.

| Warmest Winters | | Coolest Winters | | Wettest Winters | | Driest Winters | |
|-----------------|------------------------|-----------------|------------------------|-----------------|------------------------|----------------|------------------------|
| 1 | 68.8 in 1948-49 | 1 | 49.6 in 2009-10 | 1 | 21.20 in 1997-98 | 1 | 0.72 in 1949-50 |
| 2 | 68.5 in 1936-37 | 2 | 56.5 in 2010-11 | 2 | 16.61 in 1935-36 | 2 | 1.45 in 2000-01 |
| 3 | 67.4 in 1971-72 | 3 | 58.0 in 1977-78 | 3 | 14.21 in 1965-66 | 3 | 1.90 in 2011-12 |
| 4 | 67.3 in 2007-08 | 4 | 58.1 in 1980-81 | 4 | 14.16 in 1957-58 | 4 | 2.00 in 1948-49 |
| 5 | 66.4 in 1974-75 | 5 | 58.4 in 2002-03 | 5 | 13.26 in 1982-83 | 5 | 2.11 in 1938-39 |
| 6 | 66.2 in 1990-91 | 6 | 58.6 in 1969-70 | 6 | 12.58 in 1972-73 | 6 | 2.13 in 1934-35 |
| 7 | 66.0 in 2016-17 | 7 | 58.7 in 1976-77 | 7 | 12.15 in 1978-79 | 7 | 2.33 in 1975-76 |
| 8 | 65.9 in 1988-89 | | 58.7 in 1939-40 | 8 | 11.65 in 2009-10 | 8 | 2.34 in 1984-85 |
| 9 | 65.8 in 1956-57 | 9 | 58.8 in 2003-04 | 9 | 11.53 in 2018-19 | 9 | 2.40 in 1999-00 |
| 10 | 65.7 in 1961-62 | 10 | 59.0 in 1963-64 | 10 | 11.48 in 2015-16 | 10 | 2.42 in 1943-44 |
| ... | | ... | | ... | | ... | |
| 53 | 61.9 in 2023-24 | 23 | 61.9 in 2023-24 | 30 | 7.22 in 2023-24 | 58 | 7.22 in 2023-24 |
| | 61.9 in 1997-98 | | 61.9 in 1997-98 | | | | |
| | 61.9 in 1965-66 | | 61.9 in 1965-66 | | | | |

Normal Temperature for Winter (Dec/Jan/Feb) at WAUF1 = 62.0°
 Normal Rainfall for Winter (Dec/Jan/Feb) at WAUF1 = 6.60 in.

ARCHBOLD BIO STATION (records began in January 1969):

| Warmest Februarys | Coolest Februarys | Wettest Februarys | Driest Februarys |
|------------------------|------------------------|------------------------|------------------------|
| 1 71.3 in 2018 | 1 55.2 in 1978 | 1 10.85 in 1983 | 1 0.00 in 2001 |
| 2 69.8 in 2019 | 2 55.4 in 2010 | 2 8.28 in 1998 | 2 0.22 in 2011 |
| 3 69.3 in 2001 | 3 56.8 in 1980 | 3 5.00 in 2004 | 3 0.27 in 1999 |
| 4 68.9 in 1990 | 4 57.8 in 1969 | 4 4.73 in 1992 | 4 0.33 in 1989 |
| 68.9 in 1982 | 5 58.1 in 1973 | 5 4.32 in 2020 | 5 0.37 in 2000 |
| 6 68.6 in 1975 | 6 58.2 in 1970 | 6 3.86 in 2002 | 6 0.38 in 2009 |
| 7 68.5 in 2023 | 7 59.2 in 1988 | 7 3.57 in 1970 | 7 0.49 in 1975 |
| 8 68.2 in 2021 | 8 59.3 in 2009 | 8 3.51 in 2016 | 8 0.53 in 1977 |
| 9 68.1 in 1997 | 9 59.8 in 2006 | 9 3.46 in 1981 | 9 0.54 in 2023 |
| 10 67.3 in 2012 | 59.8 in 1977 | 10 3.31 in 2006 | 0.54 in 2018 |
| ... | ... | ... | ... |
| 34 61.6 in 2024 | 23 61.6 in 2024 | 19 2.38 in 2024 | 37 2.38 in 2024 |
| | | 2.38 in 1978 | 2.38 in 1978 |

Normal Temperature for February at ACHF1 = 64.2°

Normal Rainfall for February at ACHF1 = 2.25 in.

| Warmest Winters | Coolest Winters | Wettest Winters | Driest Winters |
|---------------------------|---------------------------|---------------------------|--------------------|
| 1 67.4 in 2016-17 | 1 57.0 in 1980-81 | 1 21.53 in 1997-98 | 1 0.64 in 2000-01 |
| 2 66.2 in 1971-72 | 2 57.4 in 1969-70 | 2 16.19 in 2015-16 | 2 1.44 in 1975-76 |
| 3 65.9 in 2019-20 | 3 58.1 in 1976-77 | 3 15.77 in 1982-83 | 3 1.77 in 1984-85 |
| 4 65.7 in 1974-75 | 4 58.2 in 1977-78 | 4 13.16 in 1978-79 | 4 2.04 in 2016-17 |
| 5 65.4 in 2022-23 | 5 58.5 in 2010-11 | 5 11.18 in 1969-70 | 5 2.22 in 2022-23 |
| 65.4 in 1990-91 | 6 58.6 in 2009-10 | 6 10.16 in 2003-04 | 6 2.43 in 2011-12 |
| 7 65.1 in 2015-16 | 7 60.0 in 2002-03 | 7 9.94 in 1972-73 | 7 2.64 in 2008-09 |
| 8 65.0 in 2017-18 | 60.0 in 1995-96 | 8 9.71 in 1994-95 | 8 2.68 in 1970-71 |
| 65.0 in 2007-08 | 9 60.2 in 1979-80 | 9 9.12 in 2018-19 | 9 3.44 in 1981-82 |
| 10 64.8 in 2018-19 | 10 60.4 in 2003-04 | 10 9.09 in 1977-78 | 10 3.48 in 2017-18 |
| 64.8 in 2012-13 | 60.4 in 1987-88 | 11 8.93 in 2023-24 | |
| ... | ... | | |
| 28 62.7 in 2023-24 | 28 62.7 in 2023-24 | | |

Normal Temperature for Winter (Dec/Jan/Feb) at ACHF1 = 63.4°

Normal Rainfall for Winter (Dec/Jan/Feb) at ACHF1 = 6.46 in.

PUNTA GORDA AREA (Temperature records began in July 1914
and Rainfall records began in May 1914):

| Warmest Februarys | Coolest Februarys | Wettest Februarys | Driest Februarys |
|------------------------|------------------------|------------------------|------------------------|
| 1 74.4 in 1949 | 1 57.3 in 1958 | 1 12.11 in 1936 | 1 0.00 in 1950 |
| 2 73.2 in 2018 | 2 57.5 in 2010 | 2 11.05 in 1983 | 2 0.01 in 2001 |
| 3 71.2 in 1959 | 57.5 in 1978 | 3 5.68 in 1963 | 3 0.04 in 1938 |
| 71.2 in 1932 | 4 58.6 in 1968 | 4 5.61 in 1982 | 0.04 in 1932 |
| 5 70.8 in 2023 | 5 58.9 in 1980 | 5 5.59 in 1937 | 5 0.09 in 1929 |
| 70.8 in 2019 | 6 59.3 in 1942 | 6 5.26 in 1998 | 6 0.13 in 1999 |
| 7 70.7 in 1918 | 7 59.5 in 1969 | 7 4.88 in 1924 | 7 0.16 in 2023 |
| 8 70.6 in 1982 | 8 59.8 in 1973 | 8 4.62 in 1964 | 8 0.18 in 1974 |
| 70.6 in 1962 | 9 60.1 in 1920 | 9 4.50 in 1952 | 9 0.25 in 1918 |
| 10 70.3 in 1957 | 10 60.2 in 1970 | 10 4.41 in 1940 | 10 0.26 in 1945 |
| ... | 60.2 in 1947 | ... | ... |
| 50 65.3 in 2024 | 55 65.3 in 2024 | 40 2.37 in 2024 | 67 2.37 in 2024 |

Normal Temperature for February at PGD = 65.5°
Normal Rainfall for February at PGD = 2.47 in.

| Warmest Winters | Coolest Winters | Wettest Winters | Driest Winters |
|---------------------------|---------------------------|----------------------------|--------------------|
| 1 72.0 in 1948-49 | 1 59.1 in 1977-78 | 1 16.32 in 1935-36 | 1 0.58 in 1949-50 |
| 2 70.7 in 1931-32 | 2 59.3 in 1976-77 | 2 15.66 in 2015-16 | 2 0.62 in 2000-01 |
| 3 70.2 in 1949-50 | 59.3 in 1969-70 | 3 15.45 in 1997-98 | 3 1.24 in 1938-39 |
| 4 69.2 in 1932-33 | 4 59.7 in 2010-11 | 4 15.16 in 1982-83 | 4 1.55 in 1948-49 |
| 5 68.5 in 1956-57 | 5 59.9 in 1957-58 | 5 12.66 in 1925-26 | 5 1.67 in 2011-12 |
| 6 68.3 in 1961-62 | 6 60.0 in 1980-81 | 6 12.65 in 1940-41 | 6 1.87 in 1927-28 |
| 7 68.0 in 1971-72 | 60.0 in 1963-64 | 7 11.76 in 1977-78 | 7 2.08 in 1973-74 |
| 8 67.9 in 1936-37 | 8 60.5 in 1939-40 | 8 11.71 in 1930-31 | 8 2.13 in 1932-33 |
| 9 67.5 in 2022-23 | 9 60.6 in 1975-76 | 9 11.51 in 1978-79 | 9 2.20 in 1961-62 |
| 10 67.4 in 2016-17 | 60.6 in 1968-69 | 10 11.42 in 1958-59 | 10 2.26 in 2016-17 |
| 67.4 in 1946-47 | ... | 11 10.89 in 1972-73 | |
| ... | | 12 10.81 in 2023-24 | |
| 41 65.7 in 2023-24 | 55 65.7 in 2023-24 | | |
| 65.7 in 1929-30 | 65.7 in 1929-30 | | |

Normal Temperature for Winter (Dec/Jan/Feb) at PGD = 64.8°
Normal Rainfall for Winter (Dec/Jan/Feb) at PGD = 6.78 in.

FORT MYERS AREA (records began in January 1902):

| Warmest Februarys | Coolest Februarys | Wettest Februarys | Driest Februarys |
|------------------------|------------------------|------------------------|------------------------|
| 1 74.9 in 2018 | 1 55.5 in 1958 | 1 10.82 in 1983 | 1 Trace in 2001 |
| 2 73.6 in 2023 | 2 57.2 in 1978 | 2 7.12 in 1998 | Trace in 1944 |
| 3 72.9 in 2019 | 3 58.8 in 1947 | 3 6.79 in 1902 | Trace in 1911 |
| 4 72.3 in 1997 | 4 59.2 in 1902 | 4 5.93 in 1934 | 4 0.06 in 1948 |
| 5 72.2 in 1982 | 5 59.4 in 2010 | 5 5.50 in 1936 | 5 0.07 in 2023 |
| 6 71.8 in 1949 | 59.4 in 1942 | 6 5.13 in 1913 | 0.07 in 1949 |
| 7 71.4 in 2017 | 7 59.9 in 1968 | 7 4.65 in 1963 | 7 0.08 in 1950 |
| 71.4 in 2001 | 8 60.0 in 1912 | 8 4.34 in 1952 | 0.08 in 1929 |
| 9 71.3 in 1990 | 9 60.1 in 1970 | 9 4.00 in 1940 | 9 0.10 in 1908 |
| 10 71.2 in 2012 | 10 60.4 in 1941 | 10 3.89 in 1992 | 10 0.11 in 2000 |
| ... | ... | ... | 0.11 in 1943 |
| 64 65.6 in 2024 | 58 65.6 in 2024 | 38 2.61 in 2024 | 86 2.61 in 2024 |
| 65.6 in 1999 | 65.6 in 1999 | | |
| 65.6 in 1974 | 65.6 in 1974 | | |

Normal Temperature for February at FMY = 67.3°

Normal Rainfall for February at FMY = 1.78 in.

| Warmest Winters | Coolest Winters | Wettest Winters | Driest Winters |
|---------------------------|---------------------------|---------------------------|--------------------|
| 1 70.9 in 2016-17 | 1 58.2 in 1957-58 | 1 18.71 in 2015-16 | 1 0.45 in 2000-01 |
| 2 70.7 in 1931-32 | 2 59.7 in 1969-70 | 2 15.59 in 1982-83 | 2 0.71 in 1948-49 |
| 3 70.3 in 2022-23 | 3 59.8 in 1976-77 | 3 15.19 in 1997-98 | 3 0.80 in 1910-11 |
| 4 70.1 in 1948-49 | 4 60.0 in 1977-78 | 4 13.74 in 1978-79 | 4 1.14 in 1984-85 |
| 5 69.8 in 1971-72 | 5 61.3 in 1980-81 | 5 12.26 in 1940-41 | 5 1.21 in 1926-27 |
| 6 69.7 in 2021-22 | 61.3 in 1939-40 | 6 12.02 in 1925-26 | 6 1.42 in 1974-75 |
| 7 69.6 in 2019-20 | 7 61.5 in 1963-64 | 7 11.65 in 2023-24 | 7 1.43 in 1904-05 |
| 8 69.4 in 1990-91 | 61.5 in 1950-51 | 8 11.51 in 2003-04 | 8 1.47 in 1928-29 |
| 9 69.1 in 1936-37 | 61.5 in 1903-04 | 9 11.06 in 1902-03 | 9 1.50 in 1961-62 |
| 10 69.0 in 2007-08 | 10 61.6 in 1930-31 | 10 10.85 in 1957-58 | 10 1.53 in 1938-39 |
| ... | ... | | |
| 47 66.2 in 2023-24 | 76 66.2 in 2023-24 | | |

Normal Temperature for Winter (Dec/Jan/Feb) at FMY = 66.4°

Normal Rainfall for Winter (Dec/Jan/Feb) at FMY = 6.11 in.

For more local climate information, please visit our web page at <https://www.weather.gov/tampabay> and look within the "Climate and Past Weather" drop down menu above the map of the area.