



January 2023 Climate Summary for West Central and Southwest Florida

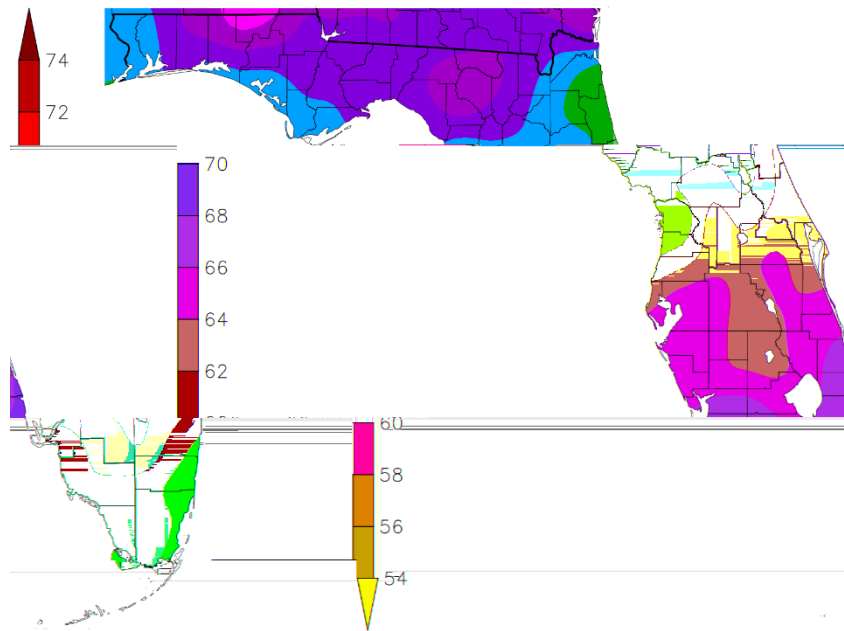
This January saw a wide range of temperatures with several days over 10 degrees above normal while a few others around mid-month were over 10 degrees below normal. On three of the coldest days freezing temperatures occurred across parts of the Nature Coast. Overall, the average temperatures for the month were about 1.5° to 3.5°F above normal with one of the official climate sites making it into the Top Ten Warmest.

JANUARY TEMPERATURE RANKINGS (°F)

Location	Rank	January 2023 Avg Temp	Normal Jan Temp	Dep fm Normal	Records Began
Fort Myers Area	14th Warmest (tie)	68.9°	64.7°	+4.2°	Jan 1902
Punta Gorda Area	24th Warmest	66.0°	62.9°	+3.1°	May 1914
Lakeland Area	15th Warmest (tie)	65.6°	62.2°	+3.4°	Jan 1915
Plant City	19th Warmest	65.4°	62.4°	+3.0°	Sep 1892
Venice	10th Warmest (tie)	64.9°	62.0°	+2.9°	May 1955
Winter Haven Area	14th Warmest (tie)	64.9°	62.2°	+2.7°	Mar 1941
St Petersburg Area	31st Warmest	64.8°	62.2°	+2.6°	Aug 1914
Tampa Area	25th Warmest	64.6°	62.0°	+2.6°	Apr 1890
Sarasota-Bradenton Area	21st Warmest (tie)	64.3°	62.4°	+1.9°	Jan 1911
Bartow	23rd Warmest	63.6°	61.2°	+2.4°	Jun 1892
Archbold Bio Stn	12th Warmest	63.5°	61.4°	+2.1°	Jan 1969
Myakka River State Park	18th Warmest	63.3°	62.2°	+1.1°	Mar 1956
Wauchula 2 N	27th Warmest (tie)	62.8°	60.2°	+2.6°	Jan 1933
St. Leo	37th Warmest (tie)	62.3°	59.7°	+2.6°	Apr 1895
Tarpon Springs	49th Warmest (tie)	61.3°	60.0°	+1.3°	Jan 1892
Brooksville Area	41st Warmest (tie)	60.1°	57.5°	+2.6°	Jan 1892
Inverness 3 SE	22nd Warmest	59.3°	56.0°	+3.3°	Jul 1948
Chiefland 5 ESE	14th Warmest	58.9°	55.3°	+3.6°	Jul 1956

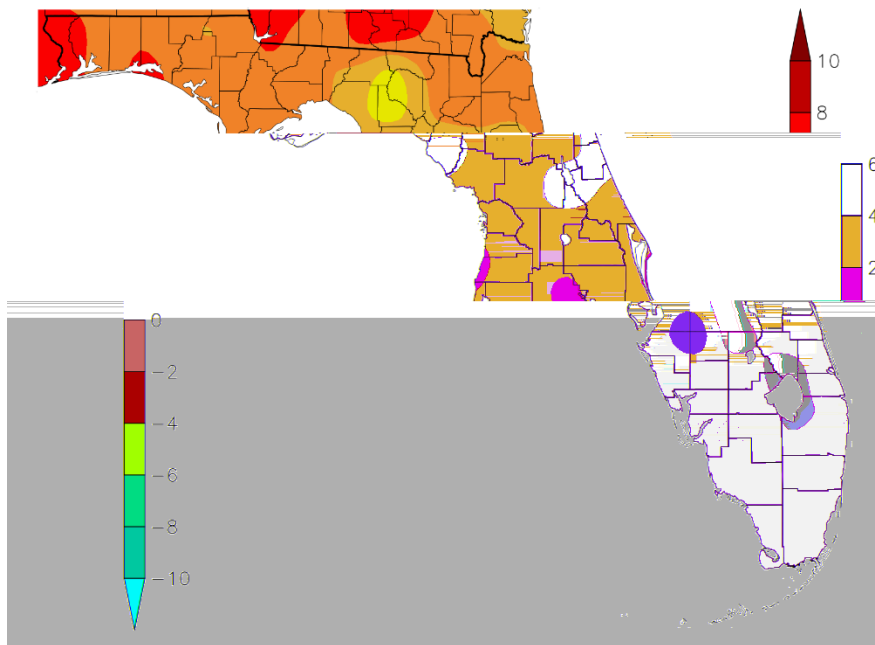
Temperature (F)

1/1/2023 – 1/31/2023



Departure from Normal Temperature (F)

1/1/2023 – 1/31/2023

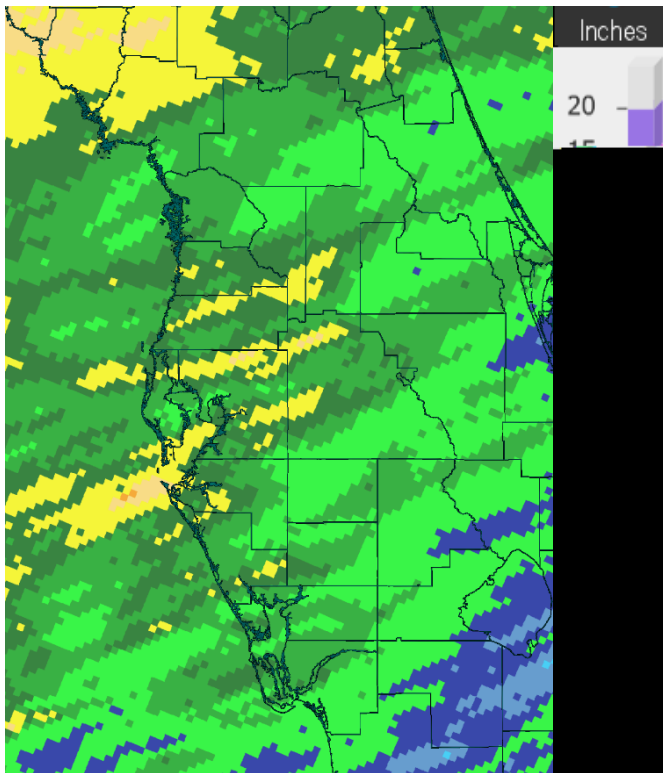


Graphics Source: NOAA Regional Climate Centers

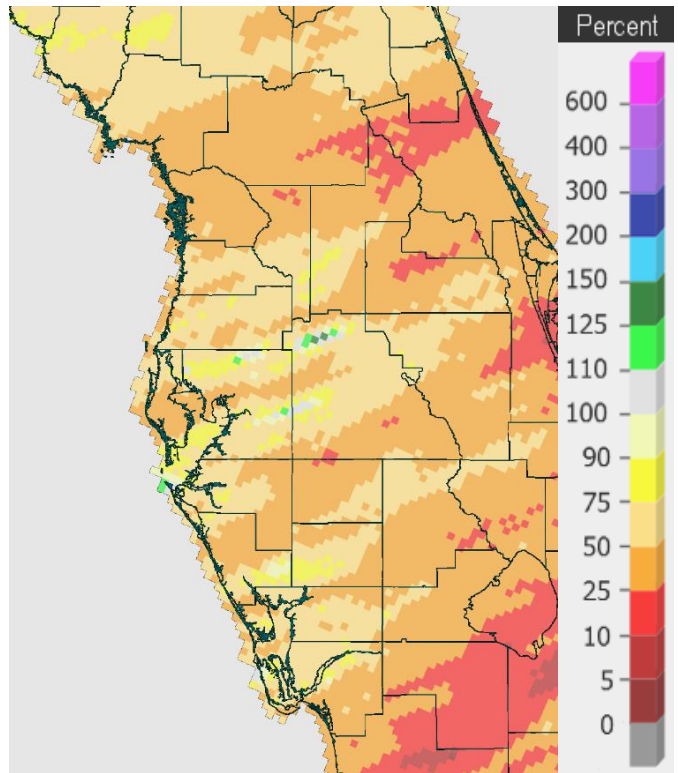
Rainfall was below normal for almost the entire region, with only a few small areas here and there that saw slightly above normal amounts.

JANUARY RAINFALL (inches):

Location	Rank	January 2023 Rain Total	Normal Jan Rain	Dep fm Normal	Records Began
St. Leo	53rd Driest	1.90	3.06	-1.16	Apr 1895
Bartow	68th Driest	1.80	2.66	-0.86	Jun 1892
Tampa Area	59th Driest	1.55	2.65	-1.10	Apr 1890
Sarasota-Bradenton Area	44th Driest	1.43	2.79	-1.36	Jan 1911
Chiefland 5 ESE	9th Driest	1.38	3.61	-2.23	Jul 1956
Fort Myers Area	65th Driest	1.33	2.43	-1.10	Jan 1902
Tarpon Springs	33rd Driest (tie)	1.27	3.03	-1.76	Jan 1892
Venice	24th Driest	1.25	2.68	-1.43	May 1955
Winter Haven Area	27th Driest	1.24	2.49	-1.25	Mar 1941
St Petersburg Area	34th Driest (tie)	1.15	2.52	-1.37	Aug 1914
Plant City	35th Driest	1.13	3.00	-1.87	Sep 1892
Inverness 3 SE	15th Driest	1.05	2.97	-1.92	Jul 1948
Lakeland Area	26th Driest	0.92	2.99	-2.07	Jan 1915
Myakka River State Park	17th Driest (tie)	0.81	2.85	-2.04	Sep 1943
Wauchula 2 N	24th Driest	0.81	2.29	-1.48	Jan 1933
Archbold Bio Stn	16th Driest	0.54	2.18	-1.64	Jan 1969



Rainfall January 2023



Percent of Normal

Following are tables of the Top Ten Warmest, Coolest, Wettest, and Driest Januarys at some official NWS locations, which include the average/total for this January, and the 1991-2020 Normal (average) temperature and rainfall for the month of January.

CHIEFLAND 5 SE (Records began in July 1956):

Warmest Januarys	Coolest Januarys	Wettest Januarys	Driest Januarys
1 67.8 in 1974	1 47.3 in 1981	1 14.50 in 1964	1 0.25 in 1974
2 62.9 in 1993	2 47.4 in 1977	2 10.59 in 1979	2 0.36 in 2013
3 62.8 in 1972	3 48.7 in 1958	3 9.53 in 1994	3 0.47 in 1957
4 62.3 in 2013	4 49.0 in 2003	4 9.39 in 1991	4 0.61 in 1968
5 61.5 in 1957	5 49.5 in 2010	5 7.65 in 1987	5 0.70 in 2020
6 61.4 in 1990	6 49.6 in 2001	6 6.97 in 1988	6 1.10 in 2001
7 61.3 in 2017	7 50.0 in 1978	7 6.54 in 2014	7 1.11 in 1981
61.3 in 1989	8 50.5 in 1970	8 6.22 in 1986	8 1.15 in 1960
9 61.0 in 1975	9 51.0 in 1988	9 6.20 in 1978	9 1.38 in 2023
10 60.6 in 1991	10 51.2 in 1961	10 5.84 in 1980	10 1.51 in 1989
11 60.2 in 2020			
12 59.9 in 1998			
13 59.7 in 1999			
14 58.9 in 2023			

Normal Temperature for January at CHIF1 = 55.3°
 Normal Rainfall for January at CHIF1 = 3.61 inches

INVERNESS 3 SE (Records began in July 1948):

Warmest Januarys	Coolest Januarys	Wettest Januarys	Driest Januarys
1 70.3 in 1974	1 48.4 in 2003	1 9.56 in 1994	1 0.00 in 1950
2 68.1 in 1950	2 48.5 in 1981	2 6.47 in 1963	2 0.10 in 2005
3 64.8 in 1949	3 49.6 in 1977	3 6.38 in 1958	3 0.26 in 1974
4 64.6 in 1957	4 50.0 in 2010	4 6.26 in 1988	4 0.29 in 2020
5 63.4 in 1993	5 50.7 in 2001	5 6.06 in 1979	5 0.30 in 2013
6 63.3 in 1967	6 51.6 in 1958	6 5.96 in 1964	6 0.35 in 1951
7 63.1 in 1989	7 51.9 in 1978	7 5.78 in 1980	7 0.64 in 1952
8 62.6 in 1975	8 52.4 in 2014	8 5.60 in 1978	8 0.67 in 1957
9 62.4 in 1952	9 52.8 in 2018	9 5.53 in 1986	9 0.72 in 1949
10 62.0 in 2017	10 53.1 in 1988	10 5.44 in 1998	10 0.75 in 2012
...	...		11 0.82 in 2006
22 59.3 in 2023	42 59.3 in 2023		12 0.85 in 2007
			13 0.91 in 1981
			14 0.99 in 2021
			15 1.05 in 2023

Normal Temperature for January at INV1 = 56.0°
 Normal Rainfall for January at INV1 = 2.97 inches

BROOKSVILLE AREA (Records began in January 1892):

Warmest Januarys		Coolest Januarys		Wettest Januarys		Driest Januarys	
1	71.2 in 1974	1	49.8 in 2003	1	9.15 in 1912	1	Trace in 1950
2	71.0 in 1937	2	50.0 in 2010	2	7.85 in 1994	2	0.13 in 1927
3	69.4 in 1950	3	51.4 in 1940	3	7.68 in 1964	3	0.16 in 2003
4	68.9 in 1947	4	51.5 in 2001	4	7.14 in 1959	4	0.31 in 1907
5	68.0 in 1913	5	51.7 in 1981	5	7.04 in 1906	5	0.35 in 1902
6	66.7 in 1972	6	51.9 in 1977	6	6.66 in 1988	6	0.39 in 1943
7	66.6 in 1989	7	52.0 in 1893	7	6.19 in 1914	7	0.44 in 2013
8	66.5 in 1949	8	52.5 in 1958	8	6.03 in 1899	8	0.48 in 1951
9	66.0 in 1917	9	52.9 in 1902	9	5.74 in 1936	9	0.53 in 1928
10	65.6 in 1932	10	53.7 in 2014	10	5.67 in 1958	10	0.59 in 1937
	65.6 in 1907						
...							
41	60.1 in 2023	74	60.1 in 2023				
	60.1 in 1965		60.1 in 1965				
	60.1 in 1960		60.1 in 1960				
	60.1 in 1920		60.1 in 1920				

Normal Temperature for January at BKV = 57.5°

Total Rainfall for Jan 2023 = Few days missing

Normal Rainfall for January at BKV = 3.01 inches

ST LEO (Records began in April 1895):

Warmest Januarys		Coolest Januarys		Wettest Januarys		Driest Januarys	
1	71.9 in 1937	1	51.1 in 1940	1	8.71 in 1899	1	0.00 in 1950
2	69.2 in 1947	2	51.7 in 1977	2	7.61 in 1914	2	0.18 in 1937
3	68.7 in 1950	3	52.7 in 1981	3	7.55 in 1912	3	0.19 in 2021
4	67.8 in 1913	4	53.4 in 1958	4	7.37 in 1903	4	0.25 in 1927
5	67.5 in 1972	5	53.6 in 1928	5	7.15 in 1941	5	0.34 in 1907
6	66.9 in 1949	6	54.0 in 2010	6	6.32 in 1948	6	0.48 in 1898
7	66.6 in 1989		54.0 in 1931	7	6.15 in 1904	7	0.51 in 1943
8	66.5 in 1990	8	54.6 in 1970	8	6.13 in 1982		0.51 in 1905
	66.5 in 1916		54.6 in 1905	9	6.10 in 1906	9	0.52 in 2006
10	66.4 in 1932	10	54.9 in 1918	10	6.07 in 2016		0.52 in 1951
...		
37	62.3 in 2023	88	62.3 in 2023	74	1.90 in 2023	53	1.90 in 2023
	62.3 in 1930		62.3 in 1930				

Normal Temperature for January at STLF1 = 59.7°

Normal Rainfall for January at STLF1 = 3.06 inches

TARPON SPRINGS (Records began in January 1892):

Warmest Januarys		Coolest Januarys		Wettest Januarys		Driest Januarys	
1	71.4 in 1937	1	49.9 in 1981	1	8.23 in 2011	1	0.00 in 1950
2	70.0 in 1950	2	51.2 in 1940	2	8.16 in 1948	2	0.07 in 1974
3	69.5 in 1947	3	52.5 in 1893	3	7.96 in 1986	3	0.18 in 1898
4	67.9 in 1932	4	52.8 in 1977	4	6.43 in 1936	4	0.22 in 1927
5	67.6 in 1993	5	53.0 in 2010	5	6.17 in 1958	5	0.30 in 1907
6	67.5 in 1913		53.0 in 1958	6	6.15 in 1964	6	0.32 in 1943
7	66.7 in 1989	7	53.3 in 1956	7	5.91 in 1912	7	0.34 in 1905
8	66.6 in 1991	8	53.6 in 1905	8	5.88 in 1994	8	0.36 in 1917
9	66.4 in 1972	9	54.6 in 1896	9	5.87 in 1979	9	0.48 in 1932
	66.4 in 1916	10	54.8 in 2001	10	5.82 in 1941	10	0.51 in 1916
...		
49	61.3 in 2023	74	61.3 in 2023	98	1.27 in 2023	33	1.27 in 2023
	61.3 in 2002		61.3 in 2002		1.27 in 2023		1.27 in 1935

Normal Temperature for January at TRPF1 = 60.0°
Normal Rainfall for January at TRPF1 = 3.03 inches

TAMPA AREA (Records began in April 1890):

Warmest Januarys		Coolest Januarys		Wettest Januarys		Driest Januarys	
1	72.4 in 1937	1	50.3 in 1981	1	8.02 in 1948	1	Trace in 1950
2	71.1 in 1974	2	51.2 in 1977	2	6.73 in 1904	2	0.08 in 1927
3	69.5 in 1950	3	51.9 in 1940	3	6.45 in 1899	3	0.11 in 2003
4	69.1 in 1947	4	53.3 in 1958	4	6.33 in 1903	4	0.17 in 1974
5	68.1 in 1913	5	54.0 in 1970	5	6.28 in 2011	5	0.18 in 1949
6	67.6 in 1932	6	54.7 in 2010	6	6.18 in 2016	6	0.26 in 1932
7	67.2 in 1949	7	54.8 in 2003	7	6.17 in 1912	7	0.28 in 1902
8	67.1 in 2013	8	55.0 in 1978	8	5.72 in 1979	8	0.29 in 1916
	67.1 in 1989	9	55.1 in 1893	9	5.42 in 1996	9	0.35 in 1943
	67.1 in 1916	10	55.2 in 2001	10	5.41 in 1958	10	0.39 in 1935
...		
25	64.6 in 2023			75	1.55 in 2023	59	1.55 in 2023

Normal Temperature for January at TPA = 62.0°
Normal Rainfall for January at TPA = 2.65 inches

ST PETERSBURG AREA (Records began in August 1914):

Warmest Januarys		Coolest Januarys		Wettest Januarys		Driest Januarys	
1	73.3 in 1937	1	53.3 in 1940	1	10.39 in 1948	1	Trace in 1950
2	71.8 in 1974	2	53.9 in 1981	2	7.45 in 1964	2	0.08 in 1956
3	70.8 in 1947	3	54.7 in 1977	3	7.13 in 2016	3	0.12 in 2003
4	70.4 in 1950	4	55.3 in 2010	4	6.71 in 1915	4	0.13 in 1927
5	69.8 in 1932	5	56.2 in 2003	5	6.37 in 1996	5	0.16 in 1976
6	69.5 in 1972	6	56.9 in 2001	6	6.30 in 1925	6	0.27 in 1916
7	68.4 in 2013	7	57.2 in 1970	7	6.20 in 1991	7	0.42 in 2021
	68.4 in 1916		57.2 in 1918	8	5.91 in 1973		0.42 in 1952
9	68.2 in 1989	9	57.6 in 1956	9	5.45 in 1979	9	0.43 in 1968
10	67.7 in 1993	10	58.0 in 1978	10	5.26 in 1958	10	0.44 in 1974
...		
31	64.8 in 2023	72	64.8 in 2023	75	1.15 in 2023	34	1.15 in 2023
					1.15 in 1939		1.15 in 1939

Normal Temperature for January at SPG = 62.2°

Normal Rainfall for January at SPG = 2.52 inches

PLANT CITY (Records began in September 1892):

Warmest Januarys		Coolest Januarys		Wettest Januarys		Driest Januarys	
1	71.2 in 1974	1	50.8 in 1981	1	9.03 in 1948	1	0.00 in 1950
	71.2 in 1937	2	52.1 in 1940	2	6.88 in 2016	2	Trace in 1905
3	69.9 in 1947	3	53.1 in 1977	3	6.70 in 1912	3	0.07 in 1927
4	68.8 in 1972	4	54.5 in 1905	4	6.39 in 1964	4	0.21 in 1949
5	68.4 in 1950		54.5 in 1893	5	6.33 in 1973	5	0.25 in 1937
6	68.2 in 1913	6	54.7 in 1958	6	6.12 in 1993	6	0.27 in 1923
7	66.9 in 2013	7	54.9 in 2003	7	5.98 in 1959	7	0.28 in 1907
	66.9 in 1993		54.9 in 1931	8	5.97 in 1979	8	0.29 in 1902
	66.9 in 1975	9	55.2 in 2010	9	5.94 in 1996	9	0.32 in 1976
10	66.7 in 1991	10	55.7 in 2001	10	5.86 in 1926	10	0.36 in 1968
	66.7 in 1989			
	66.7 in 1949			91	1.13 in 2023	35	1.13 in 2023
...							
19	65.4 in 2023						

Normal Temperature for January at PLCF1 = 62.4°

Normal Rainfall for January at PLCF1 = 3.00 inches

LAKELAND AREA (Records began in January 1915):

Warmest Januarys	Coollest Januarys	Wettest Januarys	Driest Januarys
1 71.6 in 1937	1 51.9 in 1977	1 8.74 in 1948	1 0.04 in 1927
2 71.0 in 1974	2 52.8 in 1940	2 8.66 in 1993	2 0.12 in 1950
3 69.2 in 1947	3 53.1 in 1981	3 7.21 in 1979	3 0.20 in 1949
4 68.9 in 1950	4 53.4 in 1958	4 6.77 in 2016	4 0.26 in 1971
5 68.4 in 1932	5 54.3 in 1970	5 5.98 in 1915	5 0.27 in 1951
6 67.7 in 1989	6 55.3 in 1978	6 5.91 in 1925	6 0.29 in 1968
7 67.6 in 1916	7 55.6 in 2010	7 5.78 in 2011	7 0.40 in 1990
8 67.5 in 1993	8 56.3 in 2003	8 5.71 in 1964	8 0.41 in 2013
67.5 in 1917	9 56.4 in 1956	9 5.60 in 1966	9 0.44 in 2021
10 67.3 in 2013	10 56.6 in 2001	10 5.56 in 1996	10 0.46 in 1922
67.3 in 1972	
12 67.2 in 1991		83 0.92 in 2023	26 0.92 in 2023
13 67.1 in 1990			
14 66.8 in 1949			
15 65.6 in 2023			
65.6 in 1975			

Normal Temperature for January at LLDF1 = 62.2°
Total Rainfall for Jan 2023 = 0.92 inches
Normal Rainfall for January at LLDF1 = 2.99 inches

WINTER HAVEN AREA (Records began in March 1941):

Warmest Januarys	Coollest Januarys	Wettest Januarys	Driest Januarys
1 71.7 in 1974	1 51.9 in 1981	1 7.46 in 1948	1 0.02 in 1950
2 71.4 in 1989	2 53.2 in 1977	2 6.57 in 1979	2 0.14 in 1949
3 71.3 in 1947	3 54.9 in 1958	3 5.91 in 1966	3 0.19 in 2013
4 69.6 in 1950	4 55.0 in 2003	4 5.88 in 2016	4 0.20 in 1951
5 68.9 in 1991	5 55.6 in 2010	5 5.78 in 1996	5 0.24 in 1971
6 68.3 in 1972	6 56.9 in 2001	6 5.62 in 1993	6 0.29 in 2021
7 67.6 in 1993	7 57.1 in 1970	5.62 in 1964	7 0.40 in 1968
8 67.5 in 1949	8 57.2 in 1976	8 5.39 in 1973	8 0.42 in 1981
9 67.2 in 1990	9 57.5 in 1985	9 5.30 in 1958	9 0.48 in 1952
10 66.7 in 2013	10 57.7 in 1978	10 5.22 in 2004	10 0.58 in 2020
66.7 in 1975	
12 65.9 in 1957		56 1.24 in 2023	27 1.24 in 2023
13 65.3 in 2020			
14 64.9 in 2023			
64.9 in 2017			

Normal Temperature for January at GIF = 62.2°
Normal Rainfall for January at GIF = 2.49 inches

BARTOW (Records began in June 1892):

Warmest Januarys	Coollest Januarys	Wettest Januarys	Driest Januarys
1 71.2 in 1974	1 52.6 in 1981	1 7.79 in 1948	1 0.03 in 1950
2 70.7 in 1937	2 54.0 in 1977	2 7.18 in 1926	2 0.10 in 1927
3 68.3 in 1950	3 54.9 in 1958	3 6.99 in 2016	3 0.16 in 1949
4 68.0 in 1991	54.9 in 1956	4 6.98 in 1915	4 0.19 in 1990
5 67.9 in 1989	5 55.5 in 2010	5 6.65 in 1958	5 0.23 in 1902
6 67.7 in 1972	6 55.8 in 2003	6 6.64 in 1903	6 0.25 in 1974
7 67.6 in 1947	7 56.0 in 1905	7 6.60 in 1936	7 0.31 in 1968
8 67.2 in 1913	56.0 in 1896	8 6.17 in 1912	8 0.33 in 1951
9 67.0 in 1993	9 56.4 in 1910	9 6.13 in 1973	9 0.34 in 1971
67.0 in 1975	10 56.6 in 1970	10 6.02 in 1966	10 0.35 in 2021
...	
23 63.6 in 2023		63 1.80 in 2023	68 1.80 in 2023
63.6 in 2002			

Normal Temperature for January at BARF1 = 61.2°

Normal Rainfall for January at BARF1 = 2.66 inches

SARASOTA-BRADENTON AREA (Records began in January 1911):

Warmest Januarys	Coollest Januarys	Wettest Januarys	Driest Januarys
1 72.0 in 1937	1 50.7 in 1981	1 10.26 in 1998	1 0.00 in 1950
2 71.1 in 1974	2 52.3 in 1977	2 9.03 in 1993	2 0.02 in 1927
3 70.5 in 1950	3 53.5 in 1940	3 7.84 in 1948	3 0.03 in 1974
4 67.9 in 1993	4 54.8 in 2003	4 7.52 in 1958	4 0.15 in 1947
5 67.7 in 1990	5 55.2 in 1978	5 6.24 in 2006	5 0.20 in 2013
6 67.6 in 1989	6 55.4 in 2010	6 5.92 in 1979	0.20 in 1937
7 67.5 in 1916	7 55.8 in 1958	7 5.38 in 1912	7 0.22 in 1956
8 67.1 in 1991	8 56.4 in 2001	8 5.24 in 1936	8 0.28 in 2003
67.1 in 1932	9 56.6 in 1928	9 5.15 in 1966	9 0.29 in 1990
10 67.0 in 2013	10 56.7 in 1985	10 4.88 in 1915	10 0.34 in 2001
...			0.34 in 1933
21 64.3 in 2023	
64.3 in 2006		69 1.43 in 2023	44 1.43 in 2023

Normal Temperature for January at SRQ = 62.4°

Normal Rainfall for January at SRQ = 2.79 inches

VENICE (Records began in April 1955):

Warmest Januarys		Coolest Januarys		Wettest Januarys		Driest Januarys	
1	69.9 in 1989	1	50.8 in 1981	1	9.32 in 1958	1	0.10 in 1968
2	69.8 in 1974	2	53.5 in 1977	2	7.34 in 2016	2	0.15 in 2003
3	69.2 in 1972	3	56.0 in 1958	3	7.00 in 1973	3	0.24 in 1974
4	69.1 in 2013	4	56.3 in 2003	4	6.62 in 1966	4	0.27 in 1990
5	65.7 in 1999	5	56.4 in 1985	5	6.39 in 1993	5	0.36 in 2012
6	65.3 in 2017	6	56.6 in 1978	6	6.28 in 1979	6	0.37 in 2001
7	65.2 in 2020		56.6 in 1976	7	5.89 in 1999	7	0.41 in 2021
8	65.1 in 1975	8	57.1 in 2001	8	4.78 in 1991	8	0.43 in 1975
	65.1 in 1967	9	57.7 in 1970	9	4.54 in 1994	9	0.46 in 1971
10	64.9 in 2023		57.7 in 1956	10	4.41 in 1996	10	0.49 in 2013
	64.9 in 1998					...	
						24	1.25 in 2023

Normal Temperature for January at VNCF1 = 62.0°
 Normal Rainfall for January at VNCF1 = 2.68 inches

MYAKKA RIVER STATE PARK (Temperature records began in March 1956
 and Rainfall records began in Sep 1943):

Warmest Januarys		Coolest Januarys		Wettest Januarys		Driest Januarys	
1	69.5 in 1974	1	52.1 in 1981	1	9.30 in 1993	1	0.00 in 1974
2	69.2 in 1993	2	53.5 in 1970	2	8.25 in 1973		0.00 in 1950
3	67.7 in 1972	3	54.5 in 1977	3	7.38 in 1979	3	0.08 in 2003
4	67.4 in 2013	4	54.9 in 2003	4	6.84 in 2016	4	0.09 in 1968
	67.4 in 1991	5	55.0 in 1958	5	6.82 in 1958	5	0.17 in 1990
6	67.3 in 1989	6	56.1 in 2001	6	5.64 in 1999	6	0.21 in 2001
	67.3 in 1975	7	57.3 in 1961	7	5.53 in 1987	7	0.27 in 2021
8	67.0 in 1990	8	57.4 in 1963	8	5.42 in 1991	8	0.31 in 2006
9	66.6 in 2017	9	57.8 in 1985	9	5.13 in 1966	9	0.32 in 1951
10	66.3 in 2007		57.8 in 1978	10	5.03 in 1998	10	0.54 in 1975
...		
18	63.3 in 2023	40	63.3 in 2023			17	0.81 in 2023
							0.81 in 1985
							0.81 in 1947

Normal Temperature for January at MKCF1 = 62.2°
 Normal Rainfall for January at MKCF1 = 2.85 inches

WAUCHULA 2 N (Records began in January 1933):

Warmest Januarys		Coolest Januarys		Wettest Januarys		Driest Januarys	
1	73.1 in 1937	1	47.4 in 2010	1	7.84 in 1979	1	0.00 in 2001
2	71.4 in 1974	2	52.5 in 1981	2	7.26 in 1973		0.00 in 2000
3	69.9 in 1947	3	53.1 in 2001	3	7.20 in 1958	3	0.03 in 1974
4	69.0 in 1972	4	54.3 in 1940	4	6.89 in 2016	4	0.08 in 1950
5	68.1 in 1991	5	54.7 in 1977	5	6.49 in 1966	5	0.14 in 1990
6	67.9 in 1989	6	56.1 in 1956	6	6.09 in 1998	6	0.26 in 1949
7	67.8 in 1990	7	56.7 in 2014	7	5.93 in 1993	7	0.27 in 1935
8	67.7 in 1950	8	57.0 in 1970	8	4.53 in 1936	8	0.29 in 2013
9	67.5 in 1975	9	57.1 in 2011	9	4.29 in 1983	9	0.30 in 1992
10	67.0 in 1993		57.1 in 1978	10	4.19 in 1948	10	0.33 in 2006
...		
27	62.8 in 2023	88	62.8 in 2023	66	0.81 in 2023	24	0.81 in 2023
	62.8 in 1954		62.8 in 1954				
	62.8 in 1952		62.8 in 1952				

Normal Temperature for January at WAUF1 = 60.2°
 Normal Rainfall for January at WAUF1 = 2.29 inches

ARCHBOLD BIO STN (Records began in January 1969):

Warmest Januarys		Coolest Januarys		Wettest Januarys		Driest Januarys	
1	69.7 in 1974	1	50.8 in 1981	1	9.64 in 2016	1	0.08 in 1976
2	67.5 in 1993	2	53.7 in 1977	2	7.91 in 1979	2	0.13 in 1975
3	67.4 in 1975	3	53.8 in 2001	3	5.65 in 1998	3	0.14 in 2021
	67.4 in 1972	4	54.5 in 2010	4	5.17 in 1991	4	0.22 in 2007
5	66.9 in 1991	5	54.8 in 2003	5	5.12 in 1993	5	0.25 in 1972
6	66.6 in 1990	6	56.3 in 1970	6	5.11 in 1973	6	0.26 in 2001
7	65.9 in 2013	7	57.1 in 1978	7	4.78 in 1970	7	0.29 in 2012
8	65.7 in 1989	8	58.0 in 1995	8	4.41 in 1983	8	0.31 in 2006
9	64.5 in 2017		58.0 in 1987	9	3.90 in 2019	9	0.33 in 1974
10	64.4 in 2007	10	58.5 in 2009	10	3.82 in 1994	10	0.36 in 1992
11	63.7 in 2020		58.5 in 1983				0.36 in 1981
12	63.5 in 2023		58.5 in 1979			12	0.40 in 1985
						13	0.41 in 2013
						14	0.45 in 1984
						15	0.51 in 2009
						16	0.54 in 2023

Normal Temperature for January at ACHF1 = 61.4°
 Normal Rainfall for January at ACHF1 = 2.18 inches

PUNTA GORDA AREA (Records began in May 1914):

Warmest Januarys	Coollest Januarys	Wettest Januarys	Driest Januarys
1 71.7 in 1950	1 54.4 in 1981	1 9.93 in 2016	1 0.00 in 1950
2 71.3 in 1937	2 55.3 in 1977	2 7.07 in 1979	0.00 in 1949
3 71.1 in 1974	3 55.8 in 2003	3 6.95 in 1958	3 0.08 in 1990
4 70.8 in 1947	4 56.4 in 2001	4 6.29 in 1973	4 0.10 in 1974
5 70.4 in 1949	56.4 in 1940	5 5.89 in 1926	0.10 in 1951
6 69.8 in 1993	6 56.6 in 2010	6 5.84 in 1991	6 0.11 in 1968
7 69.1 in 1972	7 57.3 in 1978	7 5.51 in 1948	7 0.21 in 1927
8 68.6 in 1991	8 57.5 in 1976	8 5.18 in 1966	8 0.27 in 2001
9 68.5 in 1989	9 57.6 in 1970	9 4.95 in 1931	0.27 in 1928
68.5 in 1932	10 58.4 in 1958	10 4.86 in 1970	10 0.29 in 2021
68.5 in 1916			
...			
24 66.0 in 2023			

Normal Temperature for January at PGD = 62.9°

Total Rainfall for Jan 2023 = Couple of days missing

Normal Rainfall for January at PGD = 2.32 inches

FORT MYERS AREA (Records began in January 1902):

Warmest Januarys	Coollest Januarys	Wettest Januarys	Driest Januarys
1 73.5 in 1937	1 55.7 in 1981	1 12.98 in 2016	1 0.00 in 1950
2 73.0 in 1974	2 55.9 in 1977	2 7.95 in 1991	2 Trace in 2001
3 70.9 in 1972	3 57.1 in 1958	3 7.45 in 1979	3 0.01 in 1949
4 70.8 in 1947	4 57.3 in 1940	4 6.04 in 1958	0.01 in 1917
5 70.3 in 1991	5 57.6 in 2003	5 5.36 in 1993	5 0.05 in 1916
6 70.0 in 1993	6 57.8 in 1902	6 5.10 in 2019	6 0.15 in 2012
70.0 in 1950	7 58.0 in 1970	7 4.76 in 1903	0.15 in 1984
70.0 in 1913	8 58.4 in 1905	8 4.50 in 1983	8 0.21 in 1976
9 69.9 in 2013	9 58.7 in 2001	9 4.36 in 1970	9 0.22 in 1920
69.9 in 1989	58.7 in 1956	10 4.25 in 1924	10 0.23 in 1928
11 69.6 in 1990	
12 69.5 in 1975		58 1.33 in 2023	65 1.33 in 2023
13 69.0 in 1916			
14 68.9 in 2023			
68.9 in 1932			

Normal Temperature for January at FMY = 64.7°

Normal Rainfall for January at FMY = 2.43 inches

For more Climate information visit our web site at the following link:
<https://www.weather.gov/tampabay> and then go to the Climate and Past Weather drop down menu above the graphical forecast images.