

March 2024 Climate Summary for West Central and Southwest Florida

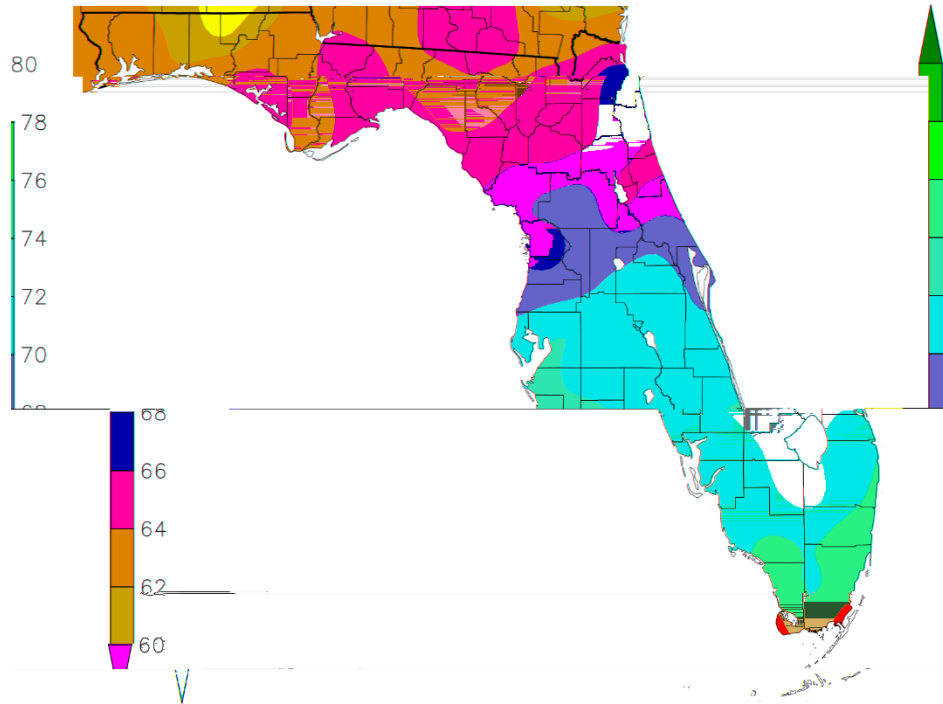
March 2024 ended up warmer than normal, with only a few days following cold fronts where temperatures were below normal. For the month, temperatures averaged from about 2°F to 5°F above normal across the area with some locations ending up in the Top Ten Warmest for March.

MARCH TEMPERATURE RANKINGS (°F):

Location	Rank	March 2024 Avg Temp	Normal Mar Temp	Dep fm Normal	Records Began
Fort Myers Area	9th Warmest	73.6°	70.3°	+3.3°	Jan 1902
Punta Gorda Area	4th Warmest	73.5°	68.5°	+5.0°	May 1914
Plant City	8th Warmest (tie)	72.2°	68.7°	+3.5°	Jan 1893
Lakeland Area	9th Warmest	72.2°	68.3°	+3.9°	Jan 1915
Venice	7th Warmest	72.0°	67.7°	+4.3°	May 1955
Sarasota-Bradenton Area	4th Warmest (tie)	71.9°	68.1°	+3.8°	Jan 1911
St Petersburg Area	17th Warmest (tie)	71.8°	69.0°	+2.8°	Aug 1914
Tampa Area	14th Warmest (tie)	71.7°	68.6°	+3.1°	Apr 1890
Winter Haven Area	13th Warmest (tie)	71.4°	69.1°	+2.3°	Mar 1941
Archbold Bio Stn	4th Warmest	71.0°	67.1°	+3.9°	Jan 1969
Bartow	18th Warmest (tie)	70.8°	67.7°	+3.1°	Jun 1892
St. Leo	29th Warmest (tie)	69.7°	66.4°	+3.3°	Apr 1895
Wauchula 2 N	11th Warmest (tie)	70.6°	66.2°	+4.4°	Jan 1933
Tarpon Springs	21st Warmest (tie)	69.7°	66.8°	+2.9°	Jan 1892
Brooksville Area	30th Warmest (tie)	68.3°	64.2°	+3.9°	Jan 1892
Inverness 3 SE	14th Warmest	68.1°	63.1°	+5.0°	Jul 1948
Chiefland 5 ESE	12th Warmest (tie)	65.8°	63.0°	+2.8°	Jul 1956

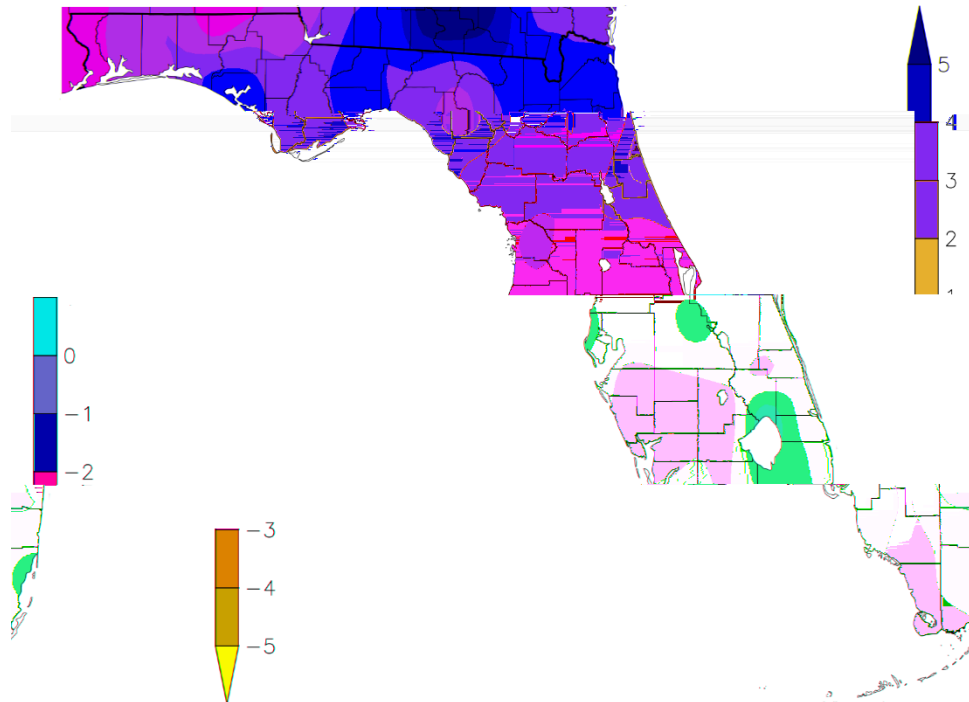
Temperature (F)

3/1/2024 – 3/31/2024



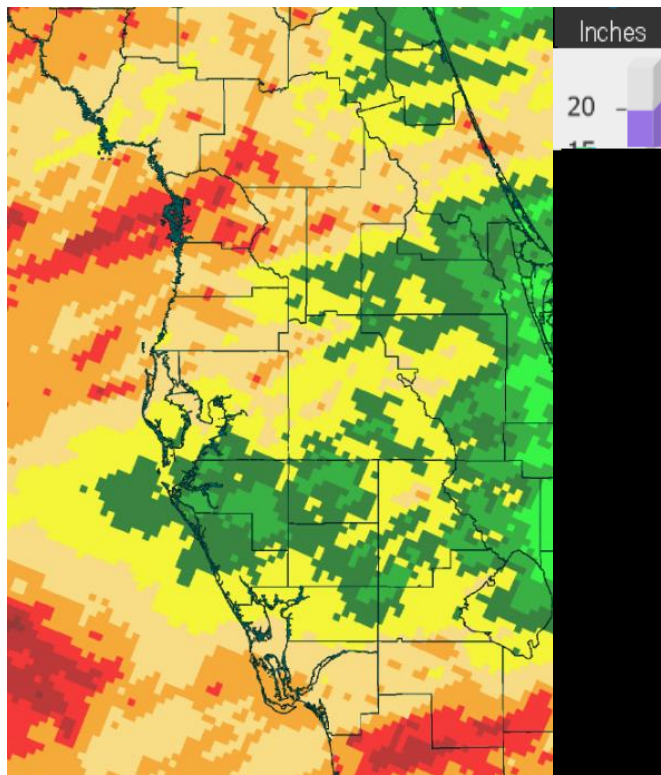
Departure from Normal Temperature (F)

3/1/2024 – 3/31/2024

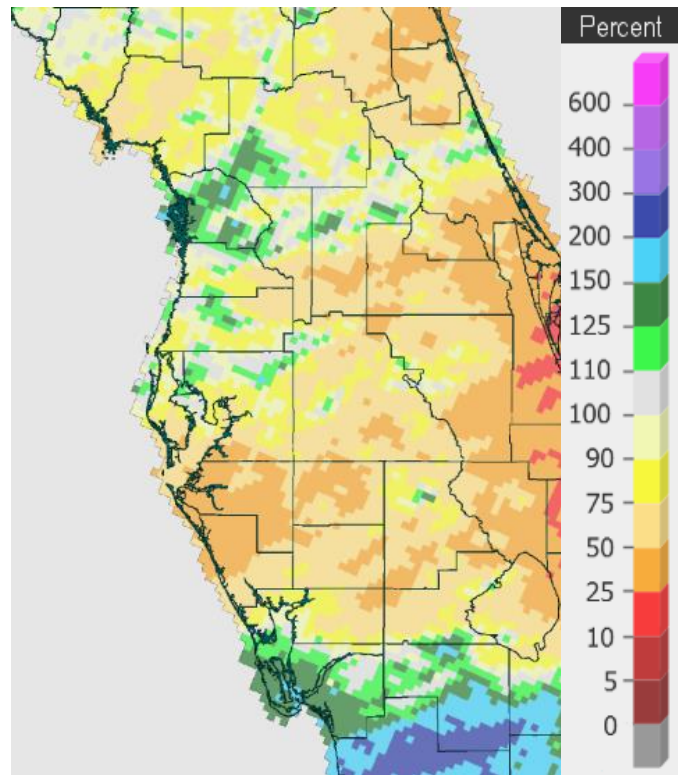


Graphics Source: High Plains Regional Climate Center (HPRCC)

As for rainfall we saw a few cold fronts move across the region, and they did bring decent rain in some locations, but many areas ended up running below normal for the month as can be seen by all the yellow and orange areas on the "Percent of Normal" image below right.



Rainfall March 2024



Percent of Normal

MARCH RAINFALL (inches) :

Location	Rank	March 2024 Rain Total	Normal Apr Rain	Dep fm Normal	Records Began
Brooksville Area	51st Wettest	3.63	2.66	+0.97	Jun 1892
Chiefland 5 ESE	31st Driest	3.48	3.81	-0.33	Jul 1956
Inverness 3SE	33rd Wettest	3.39	3.29	+0.10	Jul 1948
St. Leo	53rd Wettest	3.26	3.18	+0.08	Apr 1895
Tarpon Springs	76th Driest	2.97	3.08	-0.11	Jan 1892
Bartow	57th Wettest	2.86	2.84	+0.02	Jun 1892
Fort Myers Area	40th Wettest	2.80	2.07	+0.73	Jan 1902
Punta Gorda Area	41st Wettest	2.60	2.28	+0.32	May 1914
Tampa Area	56th Wettest (tie)	2.57	2.52	+0.05	Apr 1890
Plant City	61st Driest	2.36	2.78	-0.42	Jan 1893
Venice	33rd Driest (tie)	2.29	2.97	-0.68	Apr 1955
Lakeland Area	47th Driest	2.28	3.06	-0.78	Jan 1915
Winter Haven Area	35th Driest	2.16	3.04	-0.88	Mar 1941
St. Petersburg Area	41st Driest	1.60	2.58	-0.98	Aug 1914
Wauchula 2 N	31st Driest	1.32	2.99	-1.67	Jan 1933
Archbold Bio Stn	20th Driest	1.17	2.87	-1.70	Jan 1969
Sarasota-Bradenton Area	28th Driest	1.04	2.85	-1.81	Jan 1911

CHIEFLAND 5 SE (Records began in July 1956):

Warmest Marches		Coolest Marches		Wettest Marches		Driest Marches	
1	69.6 in 1997	1	55.5 in 1969	1	14.88 in 1959	1	0.06 in 2006
2	69.5 in 2020	2	56.1 in 2010	2	12.96 in 1996	2	0.15 in 2020
3	69.2 in 2015	3	57.3 in 2013	3	9.20 in 2022	3	0.63 in 2017
4	68.7 in 2012	4	57.8 in 1996	4	9.06 in 2014	4	0.69 in 2013
5	67.6 in 1973	5	59.7 in 1971	5	8.90 in 1960	5	0.71 in 1976
6	67.5 in 2003	6	59.8 in 2005	6	8.86 in 1978	6	0.74 in 2019
7	67.2 in 1977	7	60.0 in 1962	7	8.80 in 1973	7	0.95 in 2007
8	66.3 in 1976	8	60.7 in 1981	8	8.53 in 1991	8	0.99 in 1967
9	66.0 in 1982	9	60.8 in 1966	9	8.33 in 1983	9	1.26 in 2004
	66.0 in 1974	10	60.9 in 2014	10	8.07 in 1992	10	1.27 in 1979
11	65.9 in 1961			
12	65.8 in 2024			35	3.48 in 2024	31	3.48 in 2024
	65.8 in 1990						

Normal Temperature for March at CHIF1 = 63.0°
 Normal Rainfall for March at CHIF1 = 3.81 inches

INVERNESS 3 SE (Records began in July 1948):

Warmest Marches		Coolest Marches		Wettest Marches		Driest Marches	
1	70.9 in 1997	1	57.9 in 1996	1	16.00 in 1960	1	0.00 in 1956
2	70.7 in 2020	2	58.8 in 1969	2	11.13 in 1987	2	Trace in 2020
3	70.0 in 1953	3	59.5 in 2005	3	9.21 in 1959	3	0.01 in 2006
4	69.7 in 2012	4	60.1 in 1999	4	9.00 in 2010	4	0.17 in 2019
	69.7 in 1976	5	60.4 in 1960	5	8.83 in 1982	5	0.56 in 2012
6	69.2 in 1974	6	60.6 in 2018	6	8.63 in 2001	6	0.57 in 2023
	69.2 in 1961	7	61.2 in 1993	7	8.18 in 1964	7	0.65 in 2013
8	69.0 in 2015	8	61.8 in 1981	8	8.05 in 1958	8	0.66 in 1967
9	68.8 in 2023	9	61.9 in 1988	9	8.00 in 1996	9	0.77 in 1964
	68.8 in 1963		61.9 in 1978	10	7.96 in 1983	10	0.80 in 1949
11	68.4 in 1973			
12	68.3 in 1977			33	3.39 in 2024	43	3.39 in 2024
	68.3 in 1967						
14	68.1 in 2024						

Normal Temperature for March at INVF1 = 63.1
 Normal Rainfall for March at INVF1 = 3.29 inches

BROOKSVILLE AREA (Records began in January 1892):

Warmest Marches		Coolest Marches		Wettest Marches		Driest Marches	
1	73.0 in 1945	1	56.9 in 2010	1	17.70 in 1960	1	Trace in 1956
2	71.7 in 1935	2	57.4 in 1915	2	13.40 in 1987	2	0.02 in 2020
3	71.6 in 1938	3	57.7 in 2013	3	10.69 in 1959	3	0.04 in 2006
4	71.5 in 2020	4	59.3 in 1969	4	10.58 in 1924	4	0.07 in 2017
5	71.3 in 1974	5	59.6 in 1931	5	9.10 in 1930	5	0.10 in 1908
6	71.0 in 1929	6	60.1 in 1901	6	9.00 in 1983	6	0.12 in 2023
7	70.9 in 1948	7	60.2 in 1999	7	8.29 in 2011	7	0.15 in 1898
	70.9 in 1908	8	60.3 in 1924	8	8.00 in 1991	8	0.16 in 1916
	70.9 in 1897	9	60.7 in 2018	9	7.97 in 1958	9	0.17 in 2019
10	70.6 in 1939		60.7 in 1926	10	7.77 in 1982		0.17 in 1945
...		
30	68.3 in 2024	88	68.3 in 2024	51	3.63 in 2024	81	3.63 in 2024
	68.3 in 1980		68.3 in 1980				
	68.3 in 1904		68.3 in 1904				

Normal Temperature for March at BKV = 64.2°
 Normal Rainfall for March at BKV = 2.66 inches

ST LEO (Records began in April 1895):

Warmest Marches		Coolest Marches		Wettest Marches		Driest Marches	
1	72.9 in 1907	1	57.5 in 1931	1	17.91 in 1960	1	0.00 in 2020
2	72.8 in 1945		57.5 in 1915	2	16.50 in 1987	2	Trace in 1907
	72.8 in 1897	3	59.2 in 1969	3	12.47 in 2011	3	0.01 in 1895
4	72.7 in 1997	4	60.0 in 2013	4	12.05 in 1959	4	0.02 in 2006
5	72.4 in 1948	5	60.2 in 2010	5	10.91 in 1924	5	0.09 in 2023
6	72.3 in 2020	6	60.6 in 1930	6	10.05 in 1900	6	0.10 in 1908
7	71.8 in 2003	7	61.1 in 1960	7	9.53 in 1930	7	0.19 in 1904
8	71.6 in 1938	8	61.5 in 1914	8	9.31 in 1958	8	0.30 in 1949
9	71.0 in 1974	9	61.6 in 1924	9	8.74 in 1983	9	0.33 in 1956
10	70.9 in 2012	10	61.9 in 1941	10	8.70 in 1988	10	0.38 in 1917
...		
29	69.7 in 2024	98	69.7 in 2024	53	3.26 in 2024	78	3.26 in 2024
	69.7 in 1938		69.7 in 1935				
	69.7 in 1918		69.7 in 1918				

Normal Temperature for March at STLF1 = 66.4°
 Normal Rainfall for March at STLF1 = 3.18 inches

TARPON SPRINGS (Records began in January 1892):

Warmest Marches	Coollest Marches	Wettest Marches	Driest Marches
1 74.6 in 1997	1 57.5 in 1915	1 14.21 in 1987	1 0.00 in 2020
2 73.2 in 1948	2 58.3 in 1969	2 13.72 in 1960	0.00 in 1907
3 73.0 in 2020	3 59.1 in 1960	3 12.56 in 1959	3 0.02 in 2006
73.0 in 1945	4 59.4 in 2013	4 11.29 in 2011	4 0.04 in 1908
5 71.8 in 2012	5 59.7 in 1931	5 9.68 in 1983	5 0.11 in 1949
71.8 in 1903	6 60.0 in 2010	6 8.41 in 1930	6 0.12 in 2023
71.8 in 1897	7 61.3 in 1941	7 8.18 in 1900	7 0.26 in 1898
8 71.6 in 1921	8 61.5 in 1968	8 8.12 in 1996	8 0.34 in 1956
9 71.3 in 1938	9 61.6 in 1914	9 7.31 in 1947	9 0.47 in 1945
71.3 in 1929	10 61.7 in 1892	10 7.22 in 2014	10 0.53 in 1935
...	
21 69.7 in 2024		57 2.97 in 2024	76 2.97 in 2024
69.7 in 1995			
69.7 in 1935			

Normal Temperature for March at TRPF1 = 66.8°

Normal Rainfall for March at TRPF1 = 3.08 inches

TAMPA AREA (Records began in April 1890):

Warmest Marches	Coollest Marches	Wettest Marches	Driest Marches
1 74.4 in 2012	1 57.7 in 1915	1 12.64 in 1959	1 Trace in 2020
2 74.3 in 2020	2 58.1 in 1969	2 12.01 in 1987	Trace in 2006
3 73.9 in 2022	3 60.7 in 1931	3 11.00 in 1960	Trace in 1907
73.9 in 1997	4 60.9 in 1968	4 9.87 in 1930	4 0.06 in 1956
5 73.2 in 1945	5 61.6 in 2013	5 9.79 in 2011	5 0.08 in 1908
6 73.0 in 2015	61.6 in 2010	6 7.59 in 1983	0.08 in 1898
7 72.6 in 1921	7 61.7 in 1941	7 7.36 in 1900	7 0.20 in 1945
8 72.3 in 2023	8 61.9 in 1947	8 7.24 in 1924	8 0.22 in 1949
9 72.2 in 1907	9 62.0 in 1960	9 7.07 in 1931	9 0.35 in 2023
10 71.9 in 1897	62.0 in 1924	10 6.98 in 1957	0.35 in 2018
11 71.8 in 1948	62.0 in 1892	6.98 in 1947	
71.8 in 1938	
71.8 in 1918		56 2.57 in 2024	78 2.57 in 2024
14 71.7 in 2024		2.57 in 1911	2.57 in 1911
71.7 in 2003			

Normal Temperature for March at TPA = 68.6°

Normal Rainfall for March at TPA = 2.52 inches

ST PETERSBURG AREA (Records began in August 1914):

Warmest Marches	Coollest Marches	Wettest Marches	Driest Marches
1 74.6 in 2012	1 59.0 in 1915	1 11.79 in 1987	1 0.00 in 2020
2 74.5 in 2020	2 61.7 in 2010	2 11.33 in 1959	2 0.03 in 1956
74.5 in 1945	3 61.9 in 1969	3 8.38 in 1931	3 0.09 in 2006
4 73.9 in 1948	4 62.4 in 1996	4 8.20 in 1983	0.09 in 1939
5 73.3 in 1997	5 62.5 in 1931	5 8.14 in 2010	5 0.11 in 2023
6 73.2 in 1921	6 63.1 in 1960	6 7.86 in 1970	6 0.19 in 1917
7 73.0 in 2015	7 63.3 in 2013	7 7.75 in 1960	7 0.24 in 1916
8 72.8 in 1976	8 63.4 in 1947	8 7.65 in 1952	8 0.31 in 2002
9 72.7 in 1918	63.4 in 1924	9 7.30 in 2011	0.31 in 1949
10 72.6 in 2003	10 63.5 in 1941	10 7.21 in 2001	10 0.37 in 1945
...	
17 71.8 in 2024		70 1.60 in 2024	41 1.60 in 2024
71.8 in 2000			

Normal Temperature for March at SPG = 69.0°
 Normal Rainfall for March at SPG = 2.58 inches

PLANT CITY (Records began in September 1892):

Warmest Marches	Coollest Marches	Wettest Marches	Driest Marches
1 74.3 in 2020	1 56.9 in 1931	1 15.68 in 1960	1 0.00 in 1908
2 73.2 in 1907	2 59.1 in 1915	2 13.70 in 1959	0.00 in 1907
3 73.1 in 2023	3 60.3 in 1932	3 12.78 in 1987	3 0.01 in 2006
73.1 in 1997	4 60.5 in 1969	4 10.59 in 1983	4 0.02 in 2020
5 72.6 in 2015	5 60.6 in 2010	5 8.81 in 1930	5 0.08 in 1999
6 72.4 in 2022	6 61.0 in 1930	6 7.93 in 2010	6 0.19 in 2023
72.4 in 2016	61.0 in 1901	7 7.81 in 1924	7 0.21 in 1945
8 72.2 in 2024	8 61.3 in 2013	8 7.51 in 1998	8 0.32 in 1916
72.2 in 1948	9 61.4 in 1924	9 7.49 in 2011	9 0.39 in 1975
72.2 in 1945	10 61.5 in 1941	7.49 in 2001	10 0.40 in 2017
	
		67 2.36 in 2024	61 2.36 in 2024

Normal Temperature for March at PLCF1 = 68.7°
 Normal Rainfall for March at PLCF1 = 2.78 inches

LAKELAND AREA (Records began in January 1915):

Warmest Marches	Coollest Marches	Wettest Marches	Driest Marches
1 73.5 in 2020	1 60.0 in 1969	1 12.94 in 1960	1 0.00 in 2020
73.5 in 1921	2 60.1 in 1915	2 12.16 in 1959	2 0.22 in 2006
3 73.4 in 1918	3 61.5 in 2010	3 10.75 in 1987	0.22 in 1916
4 72.8 in 1997	61.5 in 1960	4 9.22 in 1983	4 0.26 in 2021
72.8 in 1945	61.5 in 1931	5 8.57 in 1930	5 0.53 in 1925
6 72.7 in 2023	6 61.6 in 2013	6 8.53 in 2010	6 0.57 in 2009
72.7 in 1935	61.6 in 1941	7 8.15 in 1942	7 0.63 in 2000
8 72.6 in 1938	8 61.9 in 1924	8 7.44 in 2001	8 0.67 in 2007
9 72.2 in 2024	9 62.2 in 1947	9 7.20 in 1998	9 0.68 in 2002
10 72.1 in 2012	10 62.5 in 1968	10 6.90 in 1982	10 0.69 in 2017
72.1 in 2003	
		64 2.28 in 2024	47 2.28 in 2024

Normal Temperature for March at LLDF1 = 68.3°

Normal Rainfall for March at LLDF1 = 3.06 inches

WINTER HAVEN AREA (Records began in January 1941):

Warmest Marches	Coollest Marches	Wettest Marches	Driest Marches
1 74.6 in 2020	1 58.4 in 1969	1 12.18 in 1960	1 0.14 in 2020
2 73.5 in 2015	2 61.5 in 2013	2 10.97 in 1959	2 0.19 in 2023
73.5 in 1945	3 61.6 in 2010	3 9.61 in 1987	3 0.30 in 1956
4 73.4 in 1997	4 62.2 in 1960	4 8.31 in 2011	4 0.38 in 2006
73.4 in 1948	5 62.5 in 1968	5 7.56 in 2010	5 0.41 in 2021
6 72.8 in 2012	6 62.9 in 1981	6 7.19 in 1998	6 0.48 in 2002
7 72.5 in 2022	62.9 in 1941	7 7.16 in 1970	7 0.57 in 1945
72.5 in 2003	8 63.5 in 1996	8 6.93 in 1983	8 0.58 in 2018
9 72.0 in 2023	9 63.6 in 1983	9 6.60 in 1942	0.58 in 2017
72.0 in 1977	10 64.0 in 1947	10 6.55 in 1969	10 0.60 in 2000
11 71.9 in 1989	
12 71.5 in 1974		48 2.16 in 2024	35 2.16 in 2024
13 71.4 in 2024			
71.4 in 1990			
71.4 in 1976			

Normal Temperature for March at GIF = 69.1°

Normal Rainfall for March at GIF = 3.04 inches

BARTOW (Records began in June 1892):

Warmest Marches	Coollest Marches	Wettest Marches	Driest Marches
1 76.1 in 2015	1 60.8 in 1914	1 11.53 in 1959	1 0.00 in 2020
2 74.6 in 1903	2 61.5 in 1969	2 10.25 in 1987	2 0.02 in 1908
3 74.0 in 1997	3 62.3 in 2010	3 8.99 in 1960	3 0.05 in 1945
4 73.3 in 2003	4 62.5 in 1901	4 8.57 in 1944	4 0.07 in 2023
5 73.2 in 1948	5 62.7 in 1947	5 8.12 in 2001	5 0.10 in 2006
6 72.6 in 2012	6 62.9 in 1960	6 8.10 in 1947	6 0.27 in 2021
7 72.5 in 1945	7 63.5 in 1996	7 7.72 in 1930	7 0.36 in 2002
72.5 in 1907	63.5 in 1968	8 7.28 in 2010	8 0.41 in 1999
72.5 in 1897	9 63.9 in 2018	9 7.11 in 1970	9 0.45 in 2007
10 72.3 in 2020	10 64.0 in 1983	10 7.00 in 1983	10 0.46 in 1897
...	
18 70.8 in 2024		57 2.86 in 2024	77 2.86 in 2024
70.8 in 2022			
70.8 in 2016			
70.8 in 2002			

Normal Temperature for March at BARF1 = 67.7°
Normal Rainfall for March at BARF1 = 2.84 inches

SARASOTA-BRADENTON AREA (Records began in January 1911):

Warmest Marches	Coollest Marches	Wettest Marches	Driest Marches
1 73.1 in 2020	1 57.0 in 1915	1 11.10 in 1987	1 Trace in 1939
2 73.0 in 2012	2 59.3 in 1931	2 10.77 in 2001	2 0.10 in 1945
3 72.6 in 1997	3 60.4 in 2010	3 10.60 in 1958	3 0.18 in 2023
4 71.9 in 2024	4 60.7 in 1969	4 8.81 in 1959	4 0.21 in 1949
71.9 in 2003	5 60.8 in 2013	5 8.63 in 1983	5 0.26 in 1956
71.9 in 1948	6 61.7 in 1924	6 8.49 in 2011	6 0.28 in 2007
7 71.7 in 2022	61.7 in 1914	7 8.16 in 1998	7 0.34 in 1935
8 71.6 in 2023	8 62.0 in 1941	8 7.42 in 1982	8 0.37 in 1976
9 71.5 in 2015	62.0 in 1916	9 7.37 in 1969	9 0.44 in 1917
10 71.1 in 1921	10 62.6 in 1968	10 7.10 in 1970	10 0.47 in 2004
	
		86 1.04 in 2024	28 1.04 in 2024

Normal Temperature for March at SRQ = 68.1°
Normal Rainfall for March at SRQ = 2.85 inches

VENICE (Records began in April 1955):

Warmest Marches	Coollest Marches	Wettest Marches	Driest Marches
1 74.4 in 1997	1 61.6 in 1969	1 11.21 in 1987	1 0.00 in 2020
2 74.0 in 2012	2 62.8 in 2013	2 9.57 in 1983	2 0.05 in 2023
3 73.8 in 2003	3 62.9 in 1960	3 9.38 in 1998	3 0.10 in 1956
4 72.5 in 2023	4 63.2 in 1968	4 8.83 in 2010	4 0.14 in 2009
5 72.2 in 2015	5 63.3 in 1962	5 8.05 in 1970	5 0.19 in 1971
6 72.1 in 2022	6 63.4 in 2010	6 7.74 in 1959	6 0.33 in 1977
7 72.0 in 2024	63.4 in 1981	7 7.45 in 2011	7 0.36 in 2006
8 71.7 in 2020	8 63.9 in 1978	8 7.41 in 2001	8 0.39 in 1967
9 70.8 in 2016	9 64.3 in 1996	9 7.10 in 1969	9 0.40 in 1974
70.8 in 2000	64.3 in 1988	10 6.60 in 1958	10 0.53 in 2004
	64.3 in 1958
		36 2.29 in 2024	33 2.29 in 2024
		2.29 in 2017	2.29 in 2017

Normal Temperature for March at VNCF1 = 67.7°

Normal Rainfall for March at VNCF1 = 2.97 inches

MYAKKA RIVER STATE PARK (Temperature records began in March 1956
and Rainfall records began in Sep 1943):

Warmest Marches	Coollest Marches	Wettest Marches	Driest Marches
1 74.5 in 2003	1 60.5 in 2013	1 12.88 in 1987	1 0.08 in 1956
2 74.2 in 1997	2 61.4 in 2010	2 12.24 in 1998	2 0.13 in 2006
3 72.6 in 2015	3 62.4 in 1960	3 9.74 in 1969	3 0.16 in 1945
4 71.9 in 2012	4 63.7 in 1971	4 8.80 in 1959	4 0.18 in 2023
5 71.6 in 1977	5 64.4 in 1996	5 8.21 in 1958	5 0.23 in 2020
6 71.3 in 2016	64.4 in 1959	6 7.81 in 1983	0.23 in 1966
71.3 in 1976	7 64.8 in 1958	7 7.54 in 2010	7 0.29 in 2002
8 71.2 in 1992	8 65.2 in 1981	8 7.51 in 2011	0.29 in 1977
9 71.0 in 1982	9 65.4 in 2018	9 7.35 in 2001	9 0.41 in 1953
10 70.5 in 1995	10 65.7 in 1962	10 7.04 in 1947	10 0.42 in 1949
	65.7 in 1957		

Average Temperature for March 2024 = Not Available Yet

Normal Temperature for March at MKCF1 = 67.9°

Total Rainfall for March 2024 = Not Available Yet

Normal Rainfall for March at MKCF1 = 3.00 inches

WAUCHULA 2 N (Records began in January 1933):

Warmest Marches		Coolest Marches		Wettest Marches		Driest Marches	
1	72.9 in 1948	1	57.7 in 2013	1	12.14 in 1998	1	0.00 in 2020
2	72.6 in 2003	2	61.3 in 1969	2	9.22 in 1959		0.00 in 2002
3	72.0 in 1974	3	62.3 in 2018	3	7.72 in 1958	3	0.08 in 1967
	72.0 in 1945	4	62.5 in 1996	4	7.03 in 1987	4	0.12 in 2023
5	71.7 in 1938	5	62.7 in 1960	5	6.98 in 2001	5	0.18 in 1945
6	71.6 in 1939	6	63.4 in 1947	6	6.85 in 1965	6	0.20 in 1935
7	71.5 in 1935	7	63.5 in 1999	7	6.76 in 1947	7	0.22 in 2012
8	71.2 in 1977		63.5 in 1968	8	6.55 in 1983	8	0.30 in 2006
9	70.9 in 1997	9	63.6 in 1941	9	6.53 in 1969		0.30 in 1974
	70.9 in 1973	10	63.7 in 1983	10	5.80 in 1970	10	0.35 in 1976
11	70.6 in 2024			
	70.6 in 2015			59	1.32 in 2024	31	1.32 in 2024
	70.6 in 1976						

Normal Temperature for March at WAUF1 = 66.2°
 Normal Rainfall for March at WAUF1 = 2.99 inches

ARCHBOLD BIO STN (Records began in January 1969):

Warmest Marches		Coolest Marches		Wettest Marches		Driest Marches	
1	73.1 in 2003	1	58.6 in 2010	1	10.20 in 2010	1	0.05 in 2020
2	72.6 in 1997	2	58.8 in 2013	2	8.85 in 1970		0.05 in 1974
3	72.3 in 2015	3	61.1 in 1969	3	7.52 in 2003	3	0.06 in 2002
4	71.0 in 2024	4	62.2 in 1996	4	7.43 in 1969	4	0.22 in 2004
5	70.8 in 2022		62.2 in 1983	5	6.61 in 1987	5	0.50 in 2023
6	70.6 in 2016	6	62.9 in 2018	6	6.52 in 1982	6	0.66 in 2007
	70.6 in 1977	7	63.2 in 1999	7	6.42 in 1984	7	0.76 in 1999
	70.6 in 1974	8	63.3 in 1981	8	6.21 in 1988	8	0.78 in 1972
9	70.2 in 2012	9	63.8 in 1998	9	6.03 in 1986	9	0.83 in 2021
10	70.0 in 2023	10	63.9 in 1971	10	5.74 in 1993	10	0.87 in 2006
	70.0 in 2020					...	
	70.0 in 1976					20	1.17 in 2024

Normal Temperature for March at ACHF1 = 67.1°
 Normal Rainfall for March at ACHF1 = 2.87 inches

PUNTA GORDA AREA (Records began in May 1914):

Warmest Marches	Coollest Marches	Wettest Marches	Driest Marches
1 74.9 in 1948	1 57.9 in 1915	1 9.91 in 1947	1 0.00 in 1956
2 74.8 in 1945	2 62.0 in 2010	2 9.26 in 1970	2 Trace in 2020
3 73.7 in 1997	3 62.1 in 1916	3 8.71 in 2010	Trace in 1920
4 73.5 in 2024	4 62.3 in 1969	4 8.18 in 1987	4 0.09 in 2007
5 73.0 in 1953	62.3 in 1931	5 7.64 in 1930	5 0.10 in 1945
6 72.9 in 2003	6 62.4 in 2013	6 7.23 in 1960	0.10 in 1935
7 72.5 in 2023	7 63.5 in 1941	7 6.43 in 1958	7 0.15 in 1967
8 72.4 in 2015	8 64.2 in 1968	8 6.34 in 1969	8 0.16 in 1938
9 72.3 in 1944	9 64.3 in 1924	9 6.14 in 1983	9 0.21 in 1923
72.3 in 1968	10 64.7 in 1971	10 5.84 in 1959	10 0.28 in 2006
	
		41 2.60 in 2024	65 2.60 in 2024

Normal Temperature for March at PGD = 68.5°

Normal Rainfall for March at PGD = 2.28 inches

FORT MYERS AREA (Records began in January 1902):

Warmest Marches	Coollest Marches	Wettest Marches	Driest Marches
1 75.9 in 1997	1 61.1 in 1915	1 18.58 in 1970	1 0.00 in 1935
2 75.8 in 2022	2 62.4 in 1931	2 10.31 in 1958	2 0.02 in 2020
3 75.4 in 2020	3 63.0 in 2010	3 8.94 in 1947	3 0.03 in 1974
4 75.3 in 2023	4 63.4 in 1969	4 7.78 in 1903	4 0.04 in 1939
5 74.8 in 2003	5 63.7 in 1941	5 7.41 in 1983	5 0.05 in 1956
6 74.6 in 2015	6 64.3 in 2013	6 7.21 in 2010	6 0.08 in 1907
7 74.4 in 1948	7 64.4 in 1914	7 6.88 in 1941	7 0.09 in 1977
8 74.3 in 2012	8 64.5 in 1960	8 6.64 in 1931	8 0.10 in 2023
9 73.6 in 2024	9 64.6 in 1968	9 6.59 in 2005	0.10 in 1945
10 73.2 in 1921	10 65.0 in 1926	10 6.38 in 1984	10 0.13 in 2007
	
		40 2.80 in 2024	84 2.80 in 2024

Normal Temperature for March at FMY = 70.3°

Normal Rainfall for March at FMY = 2.07 inches

For more Climate information visit our web site at the following link:
<https://www.weather.gov/tampabay> and then go to the Climate and Past
Weather drop down menu above the graphical forecast images.