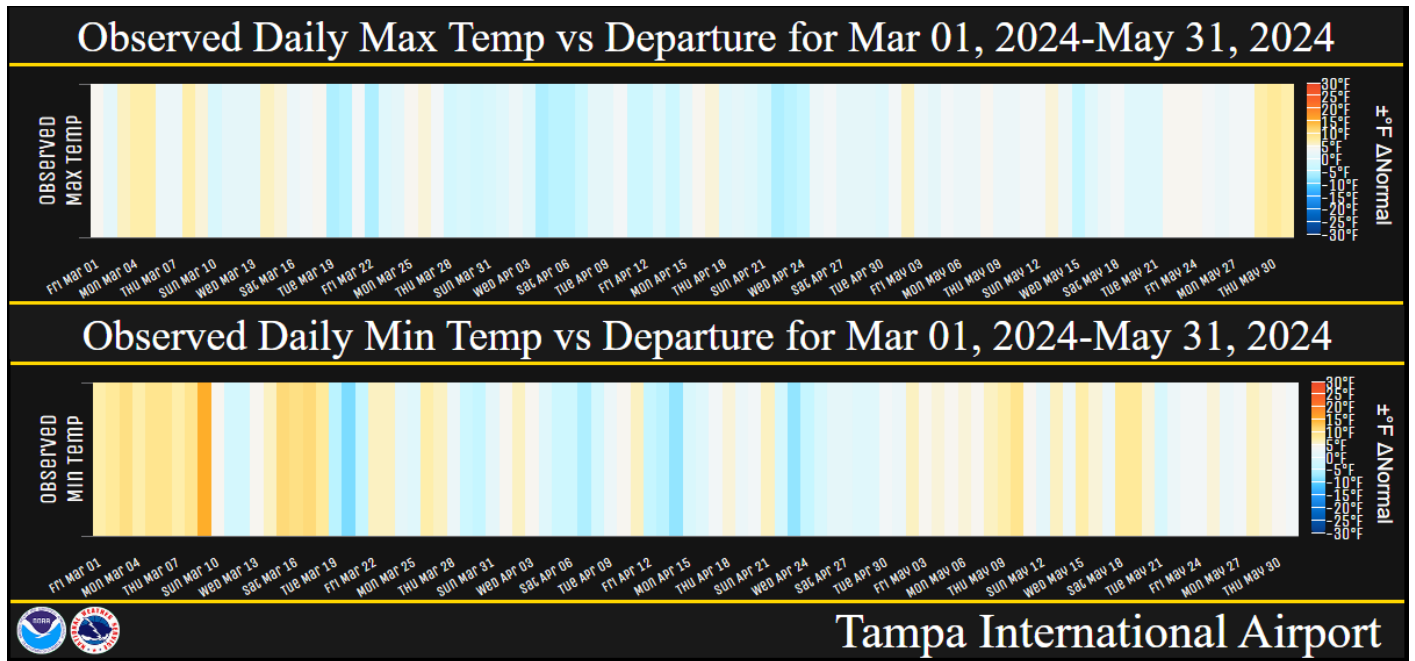


## May and Spring 2024 Climate Summary for West Central and Southwest Florida

This May we saw temperatures well above normal with averages about 3 to 5 degrees above the 1991-2020 normals. This placed many locations as the Warmest May since records began. As for meteorological Spring 2024 (March/April/May), temperatures averaged about 1.5 to 3 degrees above normal with several sites ending up in the Top Ten Warmest for Spring.

The graphic below depicts the high and low temperature departure from normal for each day during Spring (March/April/May) 2024 at Tampa International Airport. You'll notice that there are more days with lows that were well above normal (orange bars) compared to the high temperatures which had numerous days that were near to slightly below normal (blue bars). This helped push average temperatures well above normal during May and slightly above normal for the Spring.

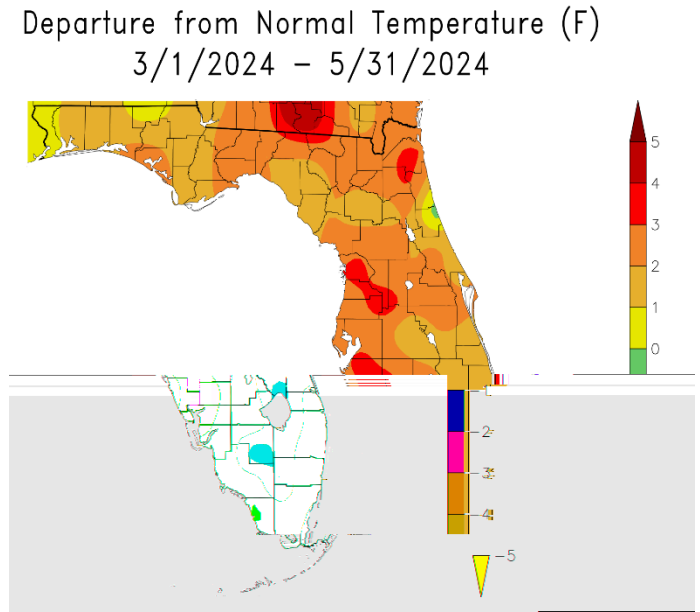
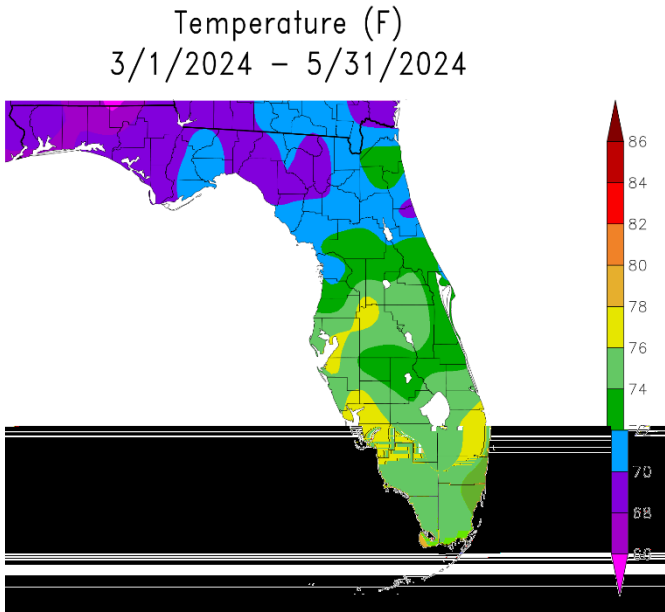
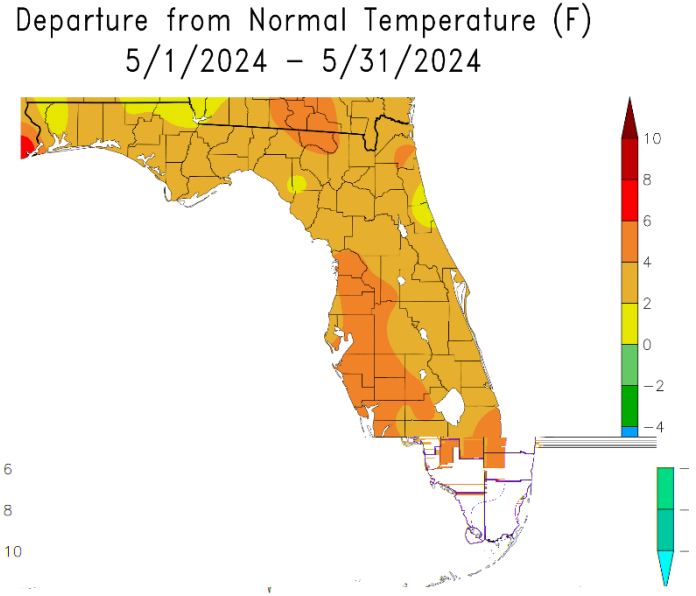
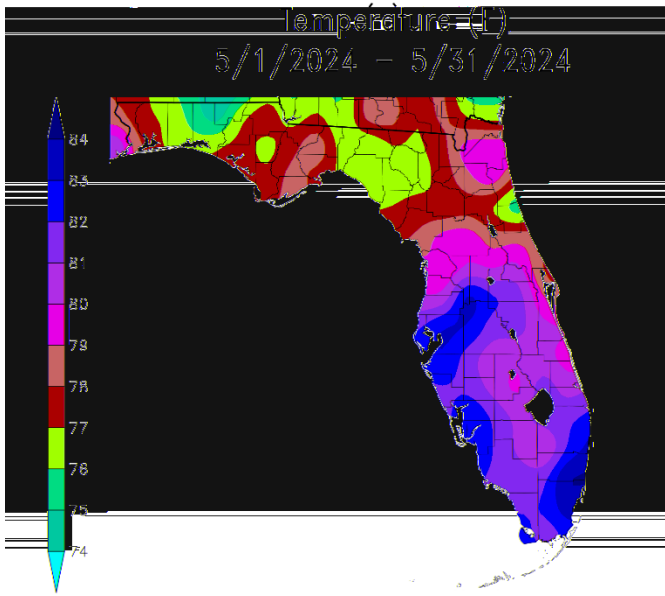


**MAY TEMPERATURE RANKINGS (°F) :**

Location	Rank	May 2024 Avg Temp	Normal May Temp	Dep fm Normal	Records Began
St Petersburg Area	1st Warmest	83.9°	79.4°	+4.5°	Jul 1914
Plant City	1st Warmest	83.8°	78.7°	+5.1°	Sep 1892
Fort Myers Area	1st Warmest	83.2°	79.3°	+3.9°	Jan 1902
Punta Gorda Area	1st Warmest	83.0°	77.9°	+5.1°	May 1914
Tampa Area	1st Warmest	83.0°	79.5°	+3.5°	Apr 1890
Winter Haven Area	1st Warmest	82.9°	79.3°	+3.6°	Mar 1941
Lakeland Area	2nd Warmest	82.7°	78.2°	+4.5°	Jan 1915
Venice	2nd Warmest	82.2°	77.5°	+4.7°	May 1955
Bartow	2nd Warmest	81.6°	77.6°	+4.0°	Jun 1892
Sarasota-Bradenton Area	1st Warmest	81.4°	77.8°	+3.6°	Jan 1911
Tarpon Springs	2nd Warmest	81.2°	77.6	+3.6°	Jan 1892
Wauchula 2 N	1st Warmest	80.9°	76.3°	+4.6°	Jan 1933
St. Leo	2nd Warmest	80.7°	76.7°	+4.0°	Apr 1895
Archbold Bio Stn	1st Warmest	79.9°	76.3°	+3.6°	Jan 1969
Brooksville Area	4th Warmest	79.9°	75.3°	+4.6°	Jan 1892
Inverness 3 SE	3rd Warmest	79.2°	74.8°	+4.4°	Jul 1948
Chiefland 5 ESE	5th Warmest	77.1°	74.5°	+2.6°	Jul 1956

**SPRING TEMPERATURE RANKINGS (°F) :**

Location	Rank	Spring 2024 Avg Temp	Normal Spr Temp	Dep fm Normal	Records Began
Fort Myers Area	5th Warmest	77.2°	74.8°	+2.4°	Jan 1902
St Petersburg Area	2nd Warmest	77.0°	74.2°	+2.8°	Jul 1914
Punta Gorda Area	2nd Warmest	76.8°	73.2°	+3.6°	May 1914
Plant City	3rd Warmest	76.3°	73.6°	+2.7°	Sep 1892
Tampa Area	6th Warmest	76.1°	74.0°	+2.1°	Apr 1890
Winter Haven Area	5th Warmest (tie)	75.9°	74.1°	+1.8°	Mar 1941
Lakeland Area	5th Warmest (tie)	75.8°	73.3°	+2.5°	Jan 1915
Venice	5th Warmest	75.6°	72.6°	+3.0°	May 1955
Sarasota-Bradenton Area	4th Warmest (tie)	75.1°	72.9°	+2.2°	Jan 1911
Bartow	13th Warmest (tie)	74.5°	72.6°	+1.9°	Jun 1892
Tarpon Springs	8th Warmest (tie)	74.4°	72.2	+2.2°	Jan 1892
Wauchula 2 N	11th Warmest	73.9°	71.2°	+2.7°	Jan 1933
St. Leo	14th Warmest (tie)	73.8°	71.5°	+2.3°	Apr 1895
Archbold Bio Stn	5th Warmest	73.6°	71.7°	+1.9°	Jan 1969
Brooksville Area	26th Warmest (tie)	72.5°	69.6°	+2.9°	Jan 1892
Inverness 3 SE	16th Warmest	71.9°	68.8°	+3.1°	Jul 1948
Chiefland 5 ESE	16th Warmest (tie)	70.1°	68.6°	+1.5°	Jul 1956



Graphics Source: NOAA Regional Climate Centers

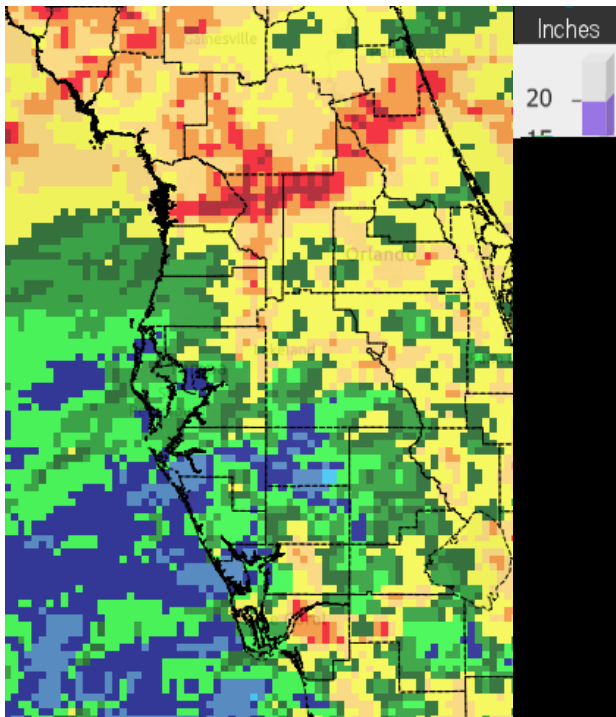
As for rainfall, March was rather dry with less than 50 percent of normal rainfall across much of the central Florida peninsula, but parts of the Nature Coast and southwest Florida were above normal. April was not any better with most of the region below normal, and some areas south of Interstate 4 less than 25 percent of normal rainfall. As for May, parts of the Nature Coast around Citrus and Sumter Counties were above normal, while elsewhere it continued to be very dry with some areas south of Interstate 4 less than 10 percent of normal.

#### **MAY RAINFALL RANKINGS (inches)**

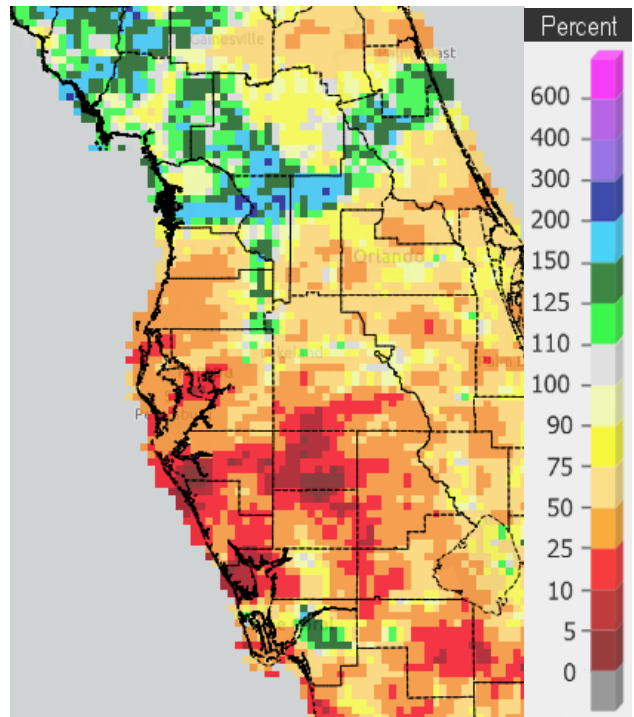
Location	Rank	May 2024 Rain Total	Normal May Rain	Dep fm Normal	Records Began
Inverness 3 SE	12th Wettest	6.40	3.09	+3.31	Jul 1948
Fort Myers Area	56th Wettest	3.83	3.46	+0.37	Jan 1902
Lakeland Area	45th Driest	2.81	3.80	-0.99	Jan 1915
Winter Haven Area	37th Driest	2.63	2.67	-0.04	Mar 1941
St. Leo	51st Driest	2.55	2.98	-0.43	Apr 1895
Plant City	43rd Driest (tie)	2.32	4.04	-1.72	Feb 1893
Chiefland 5 ESE	24th Driest	2.16	2.78	-0.62	Jul 1956
Bartow	20th Driest	1.18	2.95	-1.77	Jun 1892
Tampa Area	29th Driest (tie)	1.07	2.60	-1.53	Apr 1890
Archbold Bio Stn	1st Driest	0.74	4.36	-3.62	Jan 1969
Brooksville Area	10th Driest	0.65	3.35	-2.70	Jan 1892
Punta Gorda Area	7th Driest (tie)	0.54	3.26	-2.72	May 1914
Tarpon Springs	18th Driest	0.53	2.35	-1.82	Jan 1892
Venice	4th Driest	0.35	3.25	-2.90	May 1955
St. Petersburg Area	12th Driest	0.34	2.26	-1.92	Jul 1914
Wauchula 2 N	3rd Driest	0.23	3.51	-3.28	Jan 1933
Sarasota-Bradenton Area	3rd Driest (tie)	0.02	2.58	-2.56	Jan 1911

#### **SPRING RAINFALL RANKINGS (inches)**

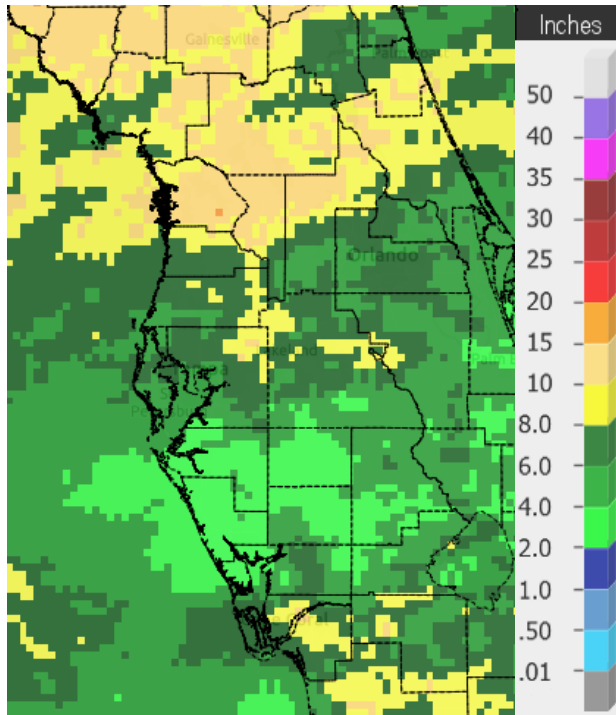
Location	Rank	Spring 2024 Rain Total	Normal Spr Rain	Dep fm Normal	Records Began
Inverness 3 SE	24th Wettest	11.84	9.07	+2.77	Jul 1948
Fort Myers Area	68th Driest	7.50	7.97	-0.47	Jan 1902
Lakeland Area	30th Driest	7.23	9.68	-2.45	Jan 1915
St. Leo	37th Driest	7.13	9.22	-2.09	Apr 1895
Chiefland 5 ESE	22nd Driest	6.72	9.56	-2.84	Jul 1956
Winter Haven Area	29th Driest	6.63	8.21	-1.58	Mar 1941
Brooksville Area	30th Driest	6.26	8.19	-1.93	Jan 1892
Plant City	31st Driest	6.19	9.70	-3.51	Feb 1893
Bartow	25th Driest	5.59	8.51	-2.92	Jun 1892
Tampa Area	37th Driest	4.98	7.67	-2.69	Apr 1890
Tarpon Springs	30th Driest	4.97	8.12	-3.15	Jan 1892
Venice	14th Driest	4.16	8.69	-4.53	May 1955
Punta Gorda Area	12th Driest	3.89	7.77	-3.88	May 1914
St. Petersburg Area	13th Driest	3.57	6.77	-3.20	Jul 1914
Wauchula 2 N	7th Driest	2.77	9.42	-6.65	Jan 1933
Archbold Bio Stn	2nd Driest	2.53	9.77	-7.24	Jan 1969
Sarasota-Bradenton Area	4th Driest	2.12	7.89	-5.77	Jan 1911



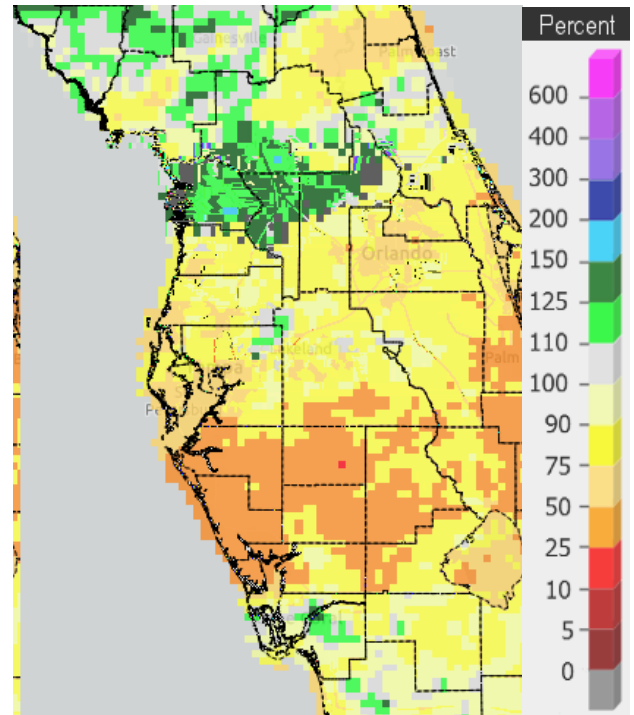
**May 2024 Rainfall**



**Percent of Normal**



**Spring (March/April/May) 2024 Rainfall**



**Percent of Normal**

On the following pages are tables of the Top Ten Warmest, Coolest, Wettest, and Driest Mays and Springs at some official NWS locations, which includes the average/total for this May and Spring 2024 (March/April/May) where available, and the 1991-2020 Normal (average) temperature and rainfall.

**Chiefland 5 ESE (Records began July 1956):**

Warmest Mays	Coollest Mays	Wettest Mays	Driest Mays
1 78.5 in 1991	1 72.3 in 1992	1 13.14 in 1976	1 0.00 in 2021
2 78.1 in 2019	2 72.5 in 2013	2 7.50 in 2010	0.00 in 2001
3 77.2 in 2017	72.5 in 2005	3 6.99 in 1959	3 0.05 in 2000
77.2 in 1959	72.5 in 1988	4 6.93 in 1966	4 0.23 in 2008
<b>5 77.1 in 2024</b>	5 72.6 in 1967	5 6.87 in 2014	5 0.26 in 1965
6 77.0 in 1995	72.6 in 1960	6 6.82 in 1969	6 0.62 in 1985
7 76.9 in 2015	7 72.8 in 2007	7 6.72 in 2018	7 0.68 in 1994
76.9 in 1975	72.8 in 2006	8 6.65 in 2005	8 0.76 in 2007
9 76.7 in 2012	9 72.9 in 1971	9 5.99 in 1991	9 0.82 in 1998
10 76.6 in 2018	10 73.0 in 2001	10 5.72 in 1980	0.82 in 1988
76.6 in 1990			...
			<b>24 2.16 in 2024</b>

Normal Temperature for May at CHIF1 = 74.5°  
 Normal Rainfall for May at CHIF1 = 2.78 in.

---

Warmest Springs	Coollest Springs	Wettest Springs	Driest Springs
1 73.4 in 2015	1 65.8 in 2005	1 24.94 in 1959	1 2.69 in 2007
2 72.1 in 2020	2 66.0 in 1969	2 23.30 in 1982	2 2.92 in 2000
3 72.0 in 1991	3 66.4 in 1960	3 21.65 in 1991	3 3.71 in 2006
4 71.7 in 2012	4 66.5 in 2013	4 19.46 in 2014	4 4.66 in 2002
5 71.3 in 2017	5 66.8 in 1993	5 19.45 in 1957	5 4.71 in 1989
6 70.8 in 2022	66.8 in 1971	6 19.41 in 2005	6 4.77 in 2004
70.8 in 2019	7 66.9 in 1966	7 18.33 in 1996	7 5.29 in 2017
70.8 in 2002	8 67.0 in 1996	8 16.64 in 2018	8 5.46 in 1994
9 70.5 in 2003	9 67.2 in 2001	9 16.28 in 1983	9 5.72 in 2019
10 70.4 in 1995	67.2 in 1962	10 16.23 in 1976	10 5.75 in 1998
11 70.3 in 1997			5.75 in 1967
12 70.2 in 1989			...
70.2 in 1982			<b>22 6.72 in 2024</b>
14 70.1 in 1990			
70.1 in 1965			
<b>16 70.1 in 2024</b>			
70.1 in 2023			
70.1 in 2011			

Normal Temperature for Spring at CHIF1 = 68.6°  
 Normal Rainfall for Spring at CHIF1 = 9.56 in

**Inverness 3 SE (Records began July 1948):**

Warmest Mays	Coollest Mays	Wettest Mays	Driest Mays
1 80.0 in 1953	1 71.6 in 1992	1 11.97 in 1976	1 0.04 in 2008
2 79.7 in 2010	2 72.3 in 1988	2 11.48 in 2009	2 0.20 in 2000
<b>3 79.2 in 2024</b>	3 72.6 in 1993	3 10.61 in 2018	3 0.29 in 2021
4 79.1 in 1975	4 73.4 in 2005	4 10.59 in 1959	4 0.40 in 1965
5 78.7 in 1962	5 73.6 in 2006	5 8.79 in 1979	5 0.42 in 1994
6 78.4 in 2019	6 73.7 in 1997	6 8.11 in 2012	6 0.49 in 1998
7 78.2 in 1991	7 73.9 in 2001	7 7.71 in 2014	7 0.54 in 2007
8 78.1 in 2022	8 74.0 in 2007	8 7.33 in 1984	8 0.74 in 1997
78.1 in 2015	74.0 in 1999	9 7.27 in 1952	0.74 in 1977
78.1 in 1959	10 74.2 in 1982	10 6.92 in 1982	10 0.78 in 2001
	74.2 in 1976	11 6.66 in 1975	
		<b>12 6.40 in 2024</b>	

Normal Temperature for May at INVf1 = 74.8°  
 Normal Rainfall for May at INVf1 = 3.09 in.

-----

Warmest Springs	Coollest Springs	Wettest Springs	Driest Springs
1 74.0 in 2015	1 66.3 in 1993	1 24.95 in 1959	1 1.96 in 1967
2 73.7 in 1953	2 66.9 in 1992	2 21.14 in 1960	2 2.76 in 1977
3 73.5 in 1967	3 67.1 in 1996	3 20.75 in 1982	3 3.22 in 2000
4 73.1 in 1963	4 67.2 in 1988	4 18.07 in 2022	4 3.60 in 1994
5 73.0 in 2023	5 67.8 in 2018	5 17.63 in 2018	5 4.03 in 2013
73.0 in 2020	6 68.1 in 2001	6 17.36 in 2014	6 4.05 in 2007
7 72.9 in 2012	7 68.3 in 2007	7 17.22 in 1991	7 4.24 in 2019
8 72.5 in 2022	8 68.7 in 2004	8 15.78 in 1987	8 4.47 in 2004
72.5 in 1965	68.7 in 1999	15.74 in 1976	9 4.63 in 1955
10 72.2 in 1974	10 69.1 in 2006	10 15.34 in 1958	10 4.67 in 1999
11 72.1 in 2002		...	
72.1 in 1991		<b>24 11.84 in 2024</b>	
72.1 in 1954			
14 72.0 in 1975			
72.0 in 1970			
<b>16 71.9 in 2024</b>			

Normal Temperature for Spring at INVf1 = 68.8°  
 Normal Rainfall for Spring at INVf1 = 9.07 in.

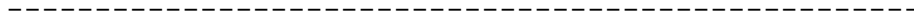
-----

**Brooksville Area (Records began January 1892):**

Warmest Mays	Coollest Mays	Wettest Mays	Driest Mays
1 80.7 in 1905	1 72.5 in 2005	1 16.27 in 1976	1 Trace in 1977
2 80.6 in 1927	2 72.8 in 1917	2 15.57 in 2009	2 0.19 in 1926
3 80.3 in 1933	3 73.1 in 2001	3 12.25 in 2018	3 0.23 in 1949
<b>4 79.9 in 2024</b>	4 73.2 in 1924	4 12.20 in 1923	4 0.29 in 2000
5 79.6 in 1995	73.2 in 1920	5 9.54 in 2014	5 0.45 in 1951
6 79.4 in 1899	6 73.4 in 1923	6 9.25 in 1906	6 0.47 in 1948
7 79.2 in 1929	7 73.6 in 1999	7 9.15 in 1912	7 0.56 in 2021
8 79.1 in 1962	8 73.7 in 1925	8 8.71 in 1921	8 0.57 in 1908
9 79.0 in 1975	9 73.8 in 2006	9 8.18 in 1957	9 0.60 in 1899
79.0 in 1902	73.8 in 1954	10 7.92 in 1919	<b>10 0.65 in 2024</b>

Normal Temperature for May at BKV = 75.3°

Normal Rainfall for May at BKV = 3.35 in.



Warmest Springs	Coollest Springs	Wettest Springs	Driest Springs
1 75.2 in 1929	1 66.1 in 2005	1 22.97 in 1959	1 1.20 in 1898
2 75.0 in 1945	2 67.6 in 2004	2 21.84 in 1960	2 1.57 in 2000
3 74.4 in 1927	67.6 in 1926	3 21.28 in 1991	3 2.20 in 1977
4 74.3 in 2015	67.6 in 1892	4 20.07 in 1928	2.20 in 1945
74.3 in 1935	5 67.8 in 1924	5 19.69 in 1976	5 2.35 in 2006
6 74.2 in 2020	6 68.0 in 2010	6 19.67 in 1900	6 2.58 in 1910
7 74.0 in 1948	7 68.1 in 1998	7 18.83 in 2018	7 3.25 in 1908
8 73.6 in 1938	8 68.2 in 2013	8 18.78 in 1982	8 3.56 in 1967
9 73.3 in 1994	9 68.3 in 2001	9 18.54 in 1987	9 3.65 in 2017
10 73.2 in 1905	68.3 in 1999	10 18.26 in 1957	10 3.67 in 1897
...			...
<b>26 72.5 in 2024</b>			<b>30 6.26 in 2024</b>
72.5 in 2012			
72.5 in 1964			
72.5 in 1897			

Normal Temperature for Spring at BKV = 69.6°

Normal Rainfall for Spring at BKV = 8.19 in.





**St. Leo (Records began April 1895):**

Warmest Mays	Coollest Mays	Wettest Mays	Driest Mays
1 81.3 in 1995	1 71.7 in 1928	1 16.81 in 1979	1 0.03 in 2000
<b>2 80.7 in 2024</b>	2 72.3 in 1921	2 14.37 in 1923	2 0.08 in 2021
3 80.6 in 1899	3 73.0 in 1923	3 11.64 in 2009	3 0.15 in 2008
4 80.2 in 1953	4 73.1 in 1931	4 10.33 in 1976	4 0.17 in 1953
5 80.1 in 2003	5 73.6 in 1917	5 10.06 in 2018	5 0.28 in 1965
6 79.7 in 2000	6 73.7 in 1940	6 9.43 in 1919	6 0.40 in 1985
7 79.6 in 1896	7 73.8 in 1920	7 9.23 in 1963	7 0.51 in 1914
8 79.4 in 1962	8 73.9 in 1992	8 8.64 in 1905	8 0.78 in 2001
9 79.3 in 1985	9 74.1 in 1918	9 8.63 in 1957	9 0.84 in 1998
79.3 in 1902	10 74.2 in 1903	10 8.28 in 1921	10 0.86 in 1927
		...	...
		<b>80 2.55 in 2024</b>	<b>51 2.55 in 2024</b>

Normal Temperature for May at STLf1 = 76.7°

Normal Rainfall for May at STLf1 = 2.98 in.

-----

Warmest Springs	Coollest Springs	Wettest Springs	Driest Springs
1 75.2 in 1948	1 65.6 in 1931	1 24.63 in 1987	1 1.12 in 2000
2 74.9 in 2002	2 67.9 in 1915	2 21.67 in 1979	2 1.83 in 1967
3 74.8 in 1945	3 68.0 in 1928	3 21.01 in 1960	3 2.87 in 1898
4 74.7 in 2003	4 68.5 in 1930	4 20.57 in 1900	4 3.20 in 1904
5 74.6 in 2015	5 69.0 in 1940	5 20.48 in 1959	5 3.32 in 1977
6 74.5 in 1908	6 69.2 in 1916	6 20.01 in 1953	6 3.96 in 1999
7 74.4 in 1995	7 69.3 in 2013	7 19.13 in 1991	7 4.03 in 1908
8 74.2 in 2020	69.3 in 1971	8 18.77 in 1928	8 4.10 in 1914
74.2 in 1953	69.3 in 1969	9 18.34 in 1957	9 4.19 in 1910
10 74.1 in 1994	10 69.4 in 1992	10 17.99 in 2018	10 4.46 in 2006
11 73.9 in 2000	69.4 in 1926	...	...
73.9 in 1991	69.4 in 1920	<b>93 7.13 in 2024</b>	<b>37 7.13 in 2024</b>
73.9 in 1975			
<b>14 73.8 in 2024</b>			
73.8 in 2023			
73.8 in 1985			

Normal Temperature for Spring at STLf1 = 71.5°

Normal Rainfall for Spring at STLf1 = 9.22 in.

-----

**Tarpon Springs (Records began January 1892):**

Warmest Mays	Coollest Mays	Wettest Mays	Driest Mays
1 82.1 in 1995	1 71.7 in 1939	1 15.17 in 1979	1 0.00 in 2001
<b>2 81.2 in 2024</b>	2 72.6 in 1897	2 10.14 in 1991	0.00 in 2000
3 80.6 in 2019	3 72.8 in 1917	3 10.13 in 1976	3 Trace in 1927
80.6 in 1991	4 73.6 in 1894	4 9.38 in 1946	4 0.01 in 2007
5 80.3 in 1933	5 74.0 in 1928	5 8.18 in 1921	5 0.03 in 1965
6 80.0 in 1996	6 74.1 in 1992	6 7.70 in 1969	6 0.08 in 2021
7 79.8 in 2010	74.1 in 1941	7 7.17 in 1957	7 0.11 in 1949
8 79.6 in 2003	74.1 in 1921	8 6.84 in 1915	8 0.13 in 1899
8 79.3 in 1953	74.1 in 1903	9 6.79 in 2018	9 0.14 in 1994
79.3 in 1943	74.1 in 1892	10 6.53 in 2012	10 0.15 in 1953
			...
			<b>18 0.53 in 2024</b>

Normal Temperature for May at TRPF1 = 77.6°  
 Normal Rainfall for May at TRPF1 = 2.35 in.

---

Warmest Springs	Coollest Springs	Wettest Springs	Driest Springs
1 75.5 in 1948	1 66.9 in 1940	1 22.38 in 1959	1 0.97 in 1898
2 75.4 in 2020	2 67.5 in 1915	2 20.20 in 1979	2 1.40 in 2000
75.4 in 2015	3 68.0 in 1960	3 19.83 in 1991	3 1.43 in 2006
4 75.0 in 1995	68.0 in 1931	4 18.91 in 1987	4 1.47 in 1967
75.0 in 1991	5 68.3 in 1971	5 18.30 in 1957	5 1.65 in 2023
6 74.9 in 1929	6 68.7 in 1916	6 18.26 in 1942	6 1.86 in 1908
7 74.8 in 1997	7 68.8 in 1969	7 17.99 in 1960	7 2.81 in 1990
<b>8 74.4 in 2024</b>	68.8 in 1941	8 16.73 in 1900	8 2.82 in 1977
74.4 in 1994	9 68.9 in 1900	9 15.71 in 1983	9 2.83 in 1945
74.4 in 1945	10 69.0 in 1906	10 15.58 in 1931	10 3.21 in 1927
			...
			<b>30 4.97 in 2024</b>

Normal Temperature for Spring at TRPF1 = 72.2°  
 Normal Rainfall for Spring at TRPF1 = 8.12 in.

**Tampa Area (Records began April 1890):**

Warmest Mays	Coollest Mays	Wettest Mays	Driest Mays
<b>1 83.0 in 2024</b>	1 73.8 in 1891	1 17.64 in 1979	1 Trace in 2001
2 81.7 in 1995	2 74.2 in 1992	2 9.41 in 1921	2 0.02 in 2000
3 81.6 in 2022	3 74.3 in 1928	3 9.11 in 2009	3 0.07 in 1994
81.6 in 2019	4 74.4 in 1982	4 8.54 in 2014	4 0.10 in 1992
5 81.5 in 1945	5 74.5 in 1897	5 8.13 in 1976	5 0.16 in 2021
6 81.2 in 1991	6 74.7 in 1940	6 7.73 in 2018	0.16 in 1941
7 81.1 in 2021	74.7 in 1917	7 7.55 in 1959	7 0.17 in 1973
8 81.0 in 2017	8 74.8 in 1921	8 7.21 in 1957	8 0.22 in 1985
9 80.9 in 2010	74.8 in 1903	9 6.92 in 1894	9 0.24 in 1989
10 80.7 in 2012	10 74.9 in 1923	10 6.88 in 1991	10 0.31 in 1940
			...
			<b>29 1.07 in 2024</b>
			1.07 in 2002
			1.07 in 1960

Normal Temperature for May at TPA = 79.5°

Normal Rainfall for May at TPA = 2.60 in.

---

Warmest Springs	Coollest Springs	Wettest Springs	Driest Springs
1 77.5 in 2022	1 68.3 in 1915	1 25.67 in 1959	1 0.61 in 1898
2 77.1 in 2015	2 68.5 in 1931	2 20.78 in 1957	2 0.86 in 2000
3 76.6 in 2012	68.5 in 1901	3 20.62 in 1979	3 1.29 in 1967
4 76.3 in 2023	4 68.8 in 1969	4 19.91 in 1930	4 2.17 in 1945
5 76.2 in 2020	5 69.1 in 1971	5 17.54 in 1931	5 2.32 in 1977
<b>6 76.1 in 2024</b>	6 69.2 in 1993	6 15.26 in 1987	6 2.46 in 2006
7 76.0 in 2017	7 69.4 in 1992	7 14.45 in 1983	7 2.64 in 1999
8 75.4 in 1991	69.4 in 1926	8 14.38 in 2014	8 2.74 in 1989
75.4 in 1945	9 69.6 in 1983	9 14.31 in 1924	9 2.98 in 1985
10 75.3 in 2021	69.6 in 1940	10 13.73 in 1960	10 3.06 in 2017
75.3 in 2002	69.6 in 1916		...
	69.6 in 1891		<b>37 4.98 in 2024</b>

Normal Temperature for Spring at TPA = 74.0°

Normal Rainfall for Spring at TPA = 7.67 in.

**St Petersburg Area (Records began July 1914) :**

Warmest Mays	Coollest Mays	Wettest Mays	Driest Mays
<b>1 83.9 in 2024</b>	1 75.3 in 1928	1 10.64 in 1959	1 0.00 in 1953
2 82.0 in 2010	75.3 in 1921	2 9.68 in 2018	2 Trace in 2007
3 81.5 in 2015	3 75.4 in 1992	3 9.21 in 1979	3 0.02 in 2000
4 81.3 in 1995	75.4 in 1917	4 8.17 in 1976	4 0.04 in 2001
5 81.2 in 1933	5 75.7 in 1940	5 7.85 in 1925	5 0.05 in 1941
6 80.9 in 2003	6 75.8 in 1954	6 7.16 in 1991	6 0.12 in 2021
80.9 in 1991	7 76.2 in 1920	7 7.11 in 1915	7 0.18 in 1945
8 80.8 in 1975	8 76.4 in 1993	8 7.05 in 1921	8 0.19 in 1973
80.8 in 1935	9 76.5 in 1988	9 6.99 in 2009	9 0.22 in 1992
10 80.4 in 2012	10 76.6 in 1960	10 6.08 in 1957	10 0.24 in 1994
	76.6 in 1951		11 0.26 in 1965
			<b>12 0.34 in 2024</b>

Normal Temperature for May at SPG = 79.4°

Normal Rainfall for May at SPG = 2.26 in.

-----

Warmest Springs	Coollest Springs	Wettest Springs	Driest Springs
1 77.7 in 2015	1 69.5 in 1915	1 26.45 in 1959	1 0.88 in 1945
<b>2 77.0 in 2024</b>	2 70.1 in 1931	2 17.88 in 1957	2 1.42 in 2000
3 76.7 in 2020	3 70.2 in 1993	3 17.20 in 1930	3 1.53 in 2006
76.7 in 2012	70.2 in 1983	4 17.18 in 1931	4 1.73 in 1977
5 76.5 in 2023	5 70.7 in 1996	5 16.31 in 1987	5 2.48 in 1967
6 75.9 in 1948	70.7 in 1940	6 15.65 in 1982	6 2.73 in 2007
75.9 in 1935	70.7 in 1926	7 15.17 in 1960	7 2.84 in 1938
75.9 in 1929	8 70.8 in 1916	8 14.50 in 2003	8 2.85 in 1949
9 75.8 in 2022	9 71.0 in 1992	9 14.03 in 1991	9 2.88 in 1999
75.8 in 2002	10 71.1 in 1924	10 13.98 in 1958	10 2.96 in 2002
			11 2.98 in 2021
			12 3.51 in 1965
			<b>13 3.57 in 2024</b>

Normal Temperature for Spring at SPG = 74.2°

Normal Rainfall for Spring at SPG = 6.77 in.

-----

**Plant City (Temperature Records began September 1892/Rainfall Records began February 1893):**

Warmest Mays	Coollest Mays	Wettest Mays	Driest Mays
1 83.8 in 2024	1 71.3 in 1928	1 16.44 in 2009	1 0.01 in 2001
2 82.0 in 2019	2 71.9 in 1931	2 14.27 in 2018	2 0.14 in 2000
3 80.8 in 2017	3 72.0 in 1940	3 11.77 in 1991	3 0.29 in 1953
4 80.4 in 2022	4 72.4 in 1941	4 11.68 in 1979	4 0.50 in 1992
5 80.1 in 1915	5 73.0 in 1925	5 10.64 in 1923	5 0.58 in 1981
6 80.0 in 1995	6 73.6 in 1992	6 10.14 in 1957	6 0.62 in 2007
7 79.9 in 2021	7 73.9 in 1932	7 9.10 in 1905	7 0.67 in 1985
8 79.8 in 1975	8 74.0 in 1979	8 9.04 in 1976	0.67 in 1948
9 79.6 in 2010	74.0 in 1960	9 8.72 in 1907	9 0.72 in 1898
10 79.5 in 1991	10 74.1 in 1901	10 8.41 in 2022	10 0.75 in 1945
79.5 in 1953		...	...
		84 2.32 in 2024	43 2.32 in 2024
		2.32 in 2008	2.32 in 2008

Normal Temperature for May at PLCF1 = 78.7°  
 Normal Rainfall for May at PLCF1 = 4.04 in.

-----

Warmest Springs	Coollest Springs	Wettest Springs	Driest Springs
1 76.8 in 2023	1 64.9 in 1931	1 26.28 in 1959	1 1.56 in 1898
2 76.7 in 2020	2 66.8 in 1901	2 23.68 in 1957	2 1.91 in 1977
3 76.3 in 2024	3 67.0 in 1932	3 20.67 in 1991	3 2.30 in 1981
4 76.2 in 2015	4 67.9 in 1940	4 19.68 in 1960	4 2.40 in 1908
5 75.8 in 2022	5 68.0 in 1941	5 19.42 in 1987	5 2.61 in 1945
6 75.6 in 2019	6 68.1 in 1930	6 19.38 in 1900	6 2.62 in 2017
7 75.3 in 2021	7 68.9 in 1925	7 19.25 in 1933	7 3.13 in 1902
8 75.1 in 1912	8 69.0 in 1942	8 18.59 in 2009	8 3.29 in 1949
9 75.0 in 2017	69.0 in 1928	9 18.56 in 1930	9 3.47 in 1985
10 74.8 in 2016	10 69.1 in 1924	10 18.30 in 1931	10 3.61 in 1967
			...
			31 6.19 in 2024

Normal Temperature for Spring at PLCF1 = 73.6°  
 Normal Rainfall for Spring at PLCF1 = 9.70 in.

-----

**Lakeland (Records began January 1915):**

Warmest Mays	Coollest Mays	Wettest Mays	Driest Mays
1 82.9 in 1995	1 73.4 in 1928	1 19.19 in 2018	1 0.13 in 1953
<b>2 82.7 in 2024</b>	2 74.0 in 2007	2 16.03 in 1979	2 0.34 in 2021
3 81.0 in 1996	3 74.4 in 1941	3 14.95 in 2009	3 0.37 in 2008
4 80.8 in 2019	74.4 in 1921	4 10.83 in 1923	4 0.44 in 2001
5 80.7 in 1991	5 74.8 in 1923	5 10.65 in 1991	5 0.50 in 1985
6 80.6 in 2010	6 75.1 in 1982	6 9.68 in 1957	6 0.55 in 2000
7 80.5 in 1990	75.1 in 1970	7 9.10 in 1968	0.55 in 1965
8 80.4 in 1994	8 75.2 in 1940	8 8.75 in 2023	8 0.63 in 1986
9 80.1 in 1933	75.2 in 1917	9 8.45 in 1922	9 0.89 in 1960
10 80.0 in 2017	10 75.4 in 1972	10 8.21 in 1921	10 0.92 in 1945
	75.4 in 1960	...	...
	75.4 in 1931	<b>65 2.81 in 2024</b>	<b>45 2.81 in 2024</b>
	75.4 in 1920	2.81 in 2010	2.81 in 2010

Normal Temperature for May at LLDF1 = 78.2°

Normal Rainfall for May at LLDF1 = 3.80 in.

-----

Warmest Springs	Coollest Springs	Wettest Springs	Driest Springs
1 76.3 in 2015	1 69.1 in 1941	1 24.87 in 1959	1 2.28 in 1945
2 76.1 in 2020	2 69.3 in 1915	2 23.85 in 2018	2 3.02 in 1981
3 76.0 in 2023	3 69.5 in 1960	3 21.98 in 1981	3 3.16 in 2000
76.0 in 1995	4 69.6 in 1969	4 21.14 in 1957	4 3.32 in 1967
<b>5 75.8 in 2024</b>	5 69.8 in 1983	5 21.03 in 1979	5 3.40 in 2017
75.8 in 1994	69.8 in 1925	6 20.64 in 1934	6 3.75 in 1977
7 75.7 in 1991	7 69.9 in 1971	7 18.56 in 1982	7 3.89 in 2006
75.7 in 1935	8 70.0 in 2007	8 18.46 in 1987	8 4.03 in 1985
9 75.4 in 2022	9 70.2 in 1926	9 17.86 in 1931	9 4.45 in 1949
10 75.0 in 2012	70.2 in 1924	17.86 in 1930	10 4.47 in 2021
75.0 in 1989			...
			<b>30 7.23 in 2024</b>

Normal Temperature for Spring at LLDF1 = 73.3°

Normal Rainfall for Spring at LLDF1 = 9.68 in.

-----

**Winter Haven Area (Records began March 1941) :**

Warmest Mays	Coollest Mays	Wettest Mays	Driest Mays
<b>1 82.9 in 2024</b>	1 74.3 in 1972	1 12.72 in 1957	1 0.03 in 2000
2 81.8 in 2019	2 74.5 in 1960	2 10.36 in 1982	2 0.05 in 2021
3 81.6 in 1995	3 74.6 in 1982	3 8.54 in 1943	3 0.49 in 1945
4 80.9 in 2015	4 74.9 in 1954	4 8.26 in 2009	4 0.57 in 1941
80.9 in 2010	5 75.1 in 1941	5 8.11 in 1976	5 0.58 in 1965
80.9 in 2003	6 75.3 in 1983	6 7.63 in 1946	6 0.71 in 2004
7 80.4 in 2022	7 75.4 in 1971	7 7.58 in 2018	7 0.80 in 1951
8 80.2 in 1990	8 75.5 in 1988	8 6.81 in 1947	8 0.81 in 1985
80.2 in 1989	75.5 in 1968	9 6.75 in 1975	9 0.84 in 1949
80.2 in 1953	10 75.7 in 2007	10 6.54 in 2016	10 0.88 in 1969
	75.7 in 1977	...	...
	75.7 in 1973	<b>47 2.63 in 2024</b>	<b>37 2.63 in 2024</b>

Normal Temperature for May at GIF = 79.3°

Normal Rainfall for May at GIF = 2.67 in.

-----

Warmest Springs	Coollest Springs	Wettest Springs	Driest Springs
1 77.7 in 2015	1 69.1 in 1983	1 23.21 in 1957	1 1.61 in 2000
2 76.5 in 2020	2 69.5 in 1960	2 21.81 in 1959	2 2.25 in 1945
3 76.1 in 1948	3 69.8 in 1971	3 20.49 in 1982	3 2.61 in 2017
4 76.0 in 2022	69.8 in 1969	4 20.32 in 1960	4 2.94 in 1981
<b>5 75.9 in 2024</b>	5 70.1 in 1941	5 18.23 in 1947	5 3.77 in 2007
75.9 in 1991	6 70.4 in 1987	6 15.16 in 1991	6 3.78 in 1967
75.9 in 1945	70.4 in 1968	7 14.42 in 2010	7 4.01 in 2021
8 75.7 in 1949	8 70.6 in 1993	8 13.59 in 1970	8 4.08 in 2015
9 75.6 in 2023	70.6 in 1981	13.59 in 1973	9 4.17 in 2006
10 75.5 in 2012	10 70.8 in 2013	10 13.44 in 1958	10 4.39 in 1965
	70.8 in 2005		...
	70.8 in 1988		<b>29 6.63 in 2024</b>

Normal Temperature for Spring at GIF = 74.1°

Normal Rainfall for Spring at GIF = 8.21 in.

-----

**Bartow (Records began June 1892) :**

Warmest Mays	Coollest Mays	Wettest Mays	Driest Mays
1 82.9 in 2015	1 73.3 in 1928	1 17.74 in 1923	1 0.02 in 1965
<b>2 81.6 in 2024</b>	2 73.5 in 1913	2 13.05 in 1979	2 0.25 in 1941
3 81.4 in 1995	3 73.8 in 1941	3 12.96 in 1957	3 0.36 in 1908
4 81.1 in 2014	4 74.3 in 1894	4 11.42 in 2009	4 0.40 in 1992
81.1 in 2003	5 74.5 in 1917	5 11.16 in 1905	5 0.45 in 1951
6 81.0 in 2012	6 74.6 in 1921	6 11.15 in 1930	6 0.52 in 2021
7 80.5 in 1905	7 74.7 in 1940	7 11.04 in 1976	7 0.72 in 1955
8 80.0 in 1990	74.7 in 1897	8 10.35 in 1921	8 0.75 in 1949
80.0 in 1975	9 74.8 in 1992	9 9.46 in 2018	9 0.87 in 1953
80.0 in 1953	10 74.9 in 1982	10 9.42 in 1932	10 0.91 in 2004
			...
			<b>20 1.18 in 2024</b>

Normal Temperature for May at BARF1 = 77.6°  
 Normal Rainfall for May at BARF1 = 2.95 in.

---

Warmest Springs	Coollest Springs	Wettest Springs	Driest Springs
1 80.1 in 2015	1 67.8 in 1915	1 25.91 in 1959	1 2.34 in 1908
2 76.0 in 2003	2 68.2 in 1901	2 22.99 in 1930	2 2.48 in 1967
3 75.9 in 2012	3 69.3 in 1914	3 22.88 in 1957	3 2.55 in 2000
4 75.6 in 2014	4 69.6 in 1983	4 19.55 in 1934	4 3.27 in 1977
5 75.4 in 1908	5 70.1 in 1993	5 19.44 in 1923	5 3.53 in 1949
6 75.3 in 1945	6 70.5 in 1894	6 19.34 in 1905	3.53 in 1894
7 75.1 in 1991	70.5 in 1893	7 19.05 in 1947	7 3.55 in 2017
8 74.9 in 2023	8 70.6 in 1971	8 18.67 in 1991	8 3.57 in 1892
9 74.8 in 1995	70.6 in 1960	9 17.84 in 1979	9 3.70 in 2021
74.8 in 1948	70.6 in 1925	10 16.39 in 1937	10 3.77 in 1911
11 74.7 in 2020	70.6 in 1913		...
12 74.6 in 1975	70.6 in 1896		<b>25 5.59 in 2024</b>
<b>13 74.5 in 2024</b>			
74.5 in 1989			
74.5 in 1967			

Normal Temperature for Spring at BARF1 = 72.6°  
 Normal Rainfall for Spring at BARF1 = 8.51 in.

---



**Sarasota-Bradenton Area (Records began January 1911):**

Warmest Mays	Coollest Mays	Wettest Mays	Driest Mays
<b>1 81.4 in 2024</b>	1 71.8 in 1917	1 9.52 in 1996	1 0.00 in 1941
2 80.7 in 2019	2 72.9 in 1928	2 9.39 in 1991	2 Trace in 2007
80.7 in 1995	3 73.1 in 1940	3 9.34 in 1978	<b>3 0.02 in 2024</b>
4 79.6 in 2010	4 73.4 in 1911	4 9.26 in 1957	0.02 in 1953
5 79.5 in 1991	5 73.5 in 1931	5 9.05 in 1921	5 0.10 in 1951
79.5 in 1990	73.5 in 1921	6 8.56 in 1954	0.10 in 1945
7 79.4 in 2012	7 73.7 in 1960	7 8.18 in 1959	7 0.13 in 1973
8 78.9 in 2017	8 74.0 in 1924	8 7.52 in 1934	8 0.15 in 1993
9 78.8 in 2022	9 74.1 in 1926	9 7.05 in 2014	0.15 in 1952
10 78.7 in 2003	10 74.2 in 1992	10 6.97 in 2018	10 0.16 in 1967
	74.2 in 1923		

Normal Temperature for May at SRQ = 77.8°

Normal Rainfall for May at SRQ = 2.58 in.

-----

Warmest Springs	Coollest Springs	Wettest Springs	Driest Springs
1 75.4 in 2023	1 66.8 in 1931	1 25.80 in 1957	1 1.39 in 1967
75.4 in 2020	2 67.2 in 1915	2 17.97 in 1959	2 2.01 in 2006
3 75.2 in 2015	3 68.3 in 1916	3 17.92 in 1991	3 2.07 in 1977
<b>4 75.1 in 2024</b>	4 68.5 in 1940	4 16.60 in 1996	<b>4 2.12 in 2024</b>
75.1 in 2012	5 68.8 in 1941	5 16.55 in 1997	5 2.50 in 1945
75.0 in 2022	68.8 in 1926	6 15.97 in 1958	6 2.61 in 1981
7 74.5 in 2019	68.8 in 1924	7 15.17 in 1930	7 2.83 in 1974
8 74.4 in 2016	8 69.0 in 1983	8 14.97 in 1969	8 2.97 in 1956
9 74.3 in 1995	9 69.1 in 1971	9 14.76 in 2014	9 3.02 in 2007
10 74.0 in 1994	10 69.5 in 1914	10 14.20 in 1987	3.02 in 1949

Normal Temperature for Spring at SRQ = 72.9°

Normal Rainfall for Spring at SRQ = 7.89 in.

-----

**Myakka River State Park (Temperature Records began March 1956/  
Rainfall Records began September 1943):**

Warmest Mays	Coollest Mays	Wettest Mays	Driest Mays
1 81.3 in 1995	1 73.5 in 1960	1 15.06 in 2018	1 0.02 in 2007
2 80.1 in 2010	2 74.2 in 1992	2 12.81 in 1959	0.02 in 2000
3 79.9 in 2019	3 74.9 in 1988	3 9.17 in 2014	3 0.23 in 1985
4 79.8 in 2003	4 75.0 in 2001	4 8.85 in 1970	4 0.35 in 1953
5 79.4 in 1990	75.0 in 1993	5 7.95 in 1975	5 0.42 in 1945
6 79.3 in 1998	6 75.1 in 2013	6 7.92 in 2009	6 0.50 in 1955
7 79.2 in 1978	75.1 in 1963	7 7.73 in 2016	7 0.55 in 1994
8 79.0 in 1996	8 75.2 in 1972	8 7.55 in 1976	8 0.56 in 1973
9 78.9 in 2012	9 75.4 in 1970	9 6.02 in 1968	9 0.61 in 1951
78.9 in 1975	10 75.6 in 2020	10 5.59 in 1963	10 0.62 in 1949

Average Temperature for May 2024 = Not Available Yet  
Normal Temperature for May at MKCF1 = 77.4°

Total Rainfall for May 2024 = Not Available Yet  
Normal Rainfall for May at MKCF1 = 3.75 in.

-----

Warmest Springs	Coollest Springs	Wettest Springs	Driest Springs
1 75.5 in 2003	1 69.1 in 1960	1 23.31 in 1959	1 1.43 in 2006
2 75.4 in 1995	2 69.8 in 1971	2 18.47 in 1987	2 1.83 in 1945
3 74.9 in 1997	69.8 in 1962	3 18.06 in 1957	3 3.01 in 1989
4 74.1 in 2012	4 70.0 in 2013	4 18.02 in 2018	4 3.44 in 1981
74.1 in 1982	5 70.4 in 1986	5 17.63 in 1993	5 3.56 in 1955
74.1 in 1975	6 70.5 in 1983	6 16.55 in 1998	6 3.80 in 2004
7 74.0 in 2019	70.5 in 1958	7 16.43 in 2014	7 4.05 in 1978
74.0 in 1990	8 70.7 in 2005	8 15.59 in 1969	8 4.12 in 1950
9 73.8 in 1994	70.7 in 1988	9 15.18 in 1970	9 4.16 in 1971
10 73.6 in 2016	10 70.8 in 1959	10 14.48 in 1982	10 4.37 in 1953

Average Temperature for Spring 2024 = Not Available Yet  
Normal Temperature for Spring at MKCF1 = 72.6°

Total Rainfall for Spring 2024 = Not Available Yet  
Normal Rainfall for Spring at MKCF1 = 9.73 in.

-----

**Venice (Records began May 1955):**

Warmest Mays	Coollest Mays	Wettest Mays	Driest Mays
1 82.7 in 2010	1 72.9 in 1988	1 13.39 in 2018	1 0.06 in 1994
<b>2 82.2 in 2024</b>	2 74.3 in 1960	2 8.57 in 1969	0.06 in 1989
3 81.8 in 1995	3 74.5 in 1981	3 7.73 in 2009	3 0.12 in 1995
4 81.3 in 2003	4 74.6 in 1980	4 7.70 in 1959	<b>4 0.35 in 2024</b>
5 80.8 in 2012	5 74.7 in 1977	5 6.41 in 1996	5 0.40 in 1972
6 80.2 in 2019	6 75.2 in 1973	6 5.86 in 1976	0.40 in 1967
7 79.8 in 2011	7 75.3 in 1963	7 5.61 in 1975	7 0.41 in 2007
8 78.9 in 1996	8 75.4 in 1983	8 5.13 in 1991	0.41 in 2001
9 78.8 in 1998	9 75.5 in 1970	9 5.12 in 2003	9 0.46 in 2008
10 78.7 in 2023	10 75.6 in 2005	10 4.98 in 1962	10 0.54 in 1999
78.7 in 2002			

Normal Temperature for May at VNCF1 = 77.5°

Normal Rainfall for May at VNCF1 = 3.25 in.

-----

Warmest Springs	Coollest Springs	Wettest Springs	Driest Springs
1 76.4 in 2012	1 68.8 in 1988	1 21.37 in 1957	1 0.79 in 1967
2 75.9 in 2023	2 69.3 in 1962	2 16.90 in 1959	2 1.87 in 1981
75.9 in 2003	3 69.5 in 1993	3 16.33 in 1969	3 1.94 in 1974
4 75.8 in 2015	4 69.7 in 1960	4 16.16 in 2018	4 2.58 in 1963
<b>5 75.6 in 2024</b>	5 69.8 in 1987	5 16.05 in 1984	5 2.83 in 1971
6 75.4 in 2011	69.8 in 1983	6 15.10 in 1983	6 2.92 in 1977
7 75.1 in 1995	7 69.9 in 1986	7 14.79 in 1987	7 3.30 in 2006
8 74.9 in 1997	8 70.0 in 2005	8 13.99 in 1962	3.30 in 1989
9 74.7 in 2002	9 70.1 in 1981	9 13.92 in 1996	9 3.36 in 1979
10 74.6 in 2022	10 70.4 in 1971	10 13.86 in 1991	10 3.59 in 2023
	70.4 in 1958		11 3.62 in 1999
			12 3.63 in 1968
			13 4.02 in 2019
			<b>14 4.16 in 2024</b>

Normal Temperature for Spring at VNCF1 = 72.6°

Normal Rainfall for Spring at VNCF1 = 8.69 in.

-----

**Wauchula 2 N (Records began January 1933):**

Warmest Mays	Coollest Mays	Wettest Mays	Driest Mays
<b>1 80.9 in 2024</b>	1 73.0 in 1992	1 13.94 in 2018	1 0.00 in 2000
2 80.1 in 2009	2 73.1 in 2013	2 11.32 in 1954	2 0.01 in 1965
3 79.8 in 1975	3 74.1 in 2001	3 11.31 in 1957	<b>3 0.23 in 2024</b>
4 79.7 in 1995	4 74.3 in 1960	4 10.61 in 1963	4 0.29 in 1945
5 79.4 in 1990	74.3 in 1940	5 9.37 in 2009	5 0.30 in 2015
79.4 in 1933	6 74.4 in 2007	6 8.39 in 1976	6 0.43 in 1953
7 79.2 in 1935	74.4 in 1999	7 7.82 in 1968	7 0.48 in 2008
8 78.9 in 2008	8 74.5 in 1982	8 7.53 in 1934	8 0.55 in 1941
78.9 in 1991	9 74.6 in 1954	9 7.42 in 1972	9 0.56 in 1949
10 78.5 in 1946	10 74.7 in 2011	10 7.17 in 1939	10 0.65 in 1995
	74.7 in 1941		

Normal Temperature for May at WAUF1 = 76.3°  
 Normal Rainfall for May at WAUF1 = 3.51 in.

-----

Warmest Springs	Coollest Springs	Wettest Springs	Driest Springs
1 75.0 in 1945	1 67.6 in 2013	1 21.37 in 1947	1 0.69 in 1945
2 74.8 in 1935	2 68.8 in 2005	2 20.73 in 1957	2 0.85 in 1967
3 74.6 in 1975	3 69.0 in 2004	3 18.24 in 1998	3 1.90 in 2006
74.6 in 1948	69.0 in 1993	4 17.01 in 2018	4 2.25 in 2000
5 74.4 in 1991	5 69.1 in 1996	5 16.98 in 1962	5 2.40 in 2004
6 74.1 in 2009	69.1 in 1983	6 16.65 in 1954	6 2.42 in 2015
74.1 in 1938	7 69.4 in 1960	7 15.78 in 1958	<b>7 2.77 in 2024</b>
8 74.0 in 2023	8 69.8 in 2018	8 15.60 in 1934	8 4.05 in 2023
74.0 in 2015	69.8 in 2007	9 15.14 in 1959	9 4.34 in 1981
74.0 in 1939	10 69.9 in 2014	10 14.19 in 1982	10 4.60 in 1974
<b>11 73.9 in 2024</b>	69.9 in 1950		

Normal Temperature for Spring at WAUF1 = 71.2°  
 Normal Rainfall for Spring at WAUF1 = 9.42 in.

-----

**Archbold Bio Stn (Records began January 1969):**

Warmest Mays	Coollest Mays	Wettest Mays	Driest Mays
<b>1 79.9 in 2024</b>	1 71.2 in 1992	1 14.46 in 2018	<b>1 0.74 in 2024</b>
2 79.1 in 1991	2 73.3 in 2013	2 7.99 in 2020	2 0.83 in 2021
3 79.0 in 1995	3 73.6 in 1988	3 7.61 in 1996	3 1.01 in 1983
4 78.5 in 2017	4 73.7 in 1993	4 7.23 in 2016	4 1.07 in 1993
5 78.2 in 2010	5 73.8 in 1982	5 7.00 in 1978	1.07 in 1993
6 78.1 in 2019	6 73.9 in 1983	6 6.97 in 1975	6 1.09 in 2005
7 78.0 in 1990	7 74.1 in 2005	7 6.96 in 1982	7 1.17 in 2000
78.0 in 1975	8 74.2 in 2006	8 6.75 in 2014	8 1.24 in 2007
9 77.4 in 2022	9 74.4 in 1977	9 6.53 in 1977	9 1.46 in 2006
10 77.3 in 2003	10 74.5 in 2007	10 6.52 in 1999	10 1.56 in 1986
	74.5 in 2001		
	74.5 in 1999		

Normal Temperature for May at ACHF1 = 76.3°

Normal Rainfall for May at ACHF1 = 4.36 in.

-----

Warmest Springs	Coollest Springs	Wettest Springs	Driest Springs
1 75.3 in 2015	1 67.8 in 1983	1 18.74 in 2018	1 2.36 in 2006
2 74.0 in 1991	2 68.2 in 1993	2 17.63 in 1982	<b>2 2.53 in 2024</b>
3 73.7 in 2023	3 68.4 in 2013	3 16.84 in 2010	3 3.56 in 1971
73.7 in 2022	4 68.5 in 1987	4 15.34 in 2003	4 4.08 in 2007
<b>5 73.6 in 2024</b>	5 68.6 in 1992	5 14.26 in 1984	5 4.22 in 1981
6 73.5 in 2020	6 68.7 in 2005	6 14.01 in 1970	6 4.85 in 1990
73.5 in 2003	68.7 in 1986	7 13.53 in 1996	7 4.93 in 2002
73.5 in 1995	8 69.1 in 2010	8 13.41 in 1969	8 4.96 in 2017
9 73.3 in 1975	69.1 in 1988	9 12.51 in 1991	9 5.09 in 2000
10 73.1 in 2017	10 69.3 in 2004	10 12.24 in 1973	10 6.60 in 2009
73.1 in 2002			

Normal Temperature for Spring at ACHF1 = 71.7°

Normal Rainfall for Spring at ACHF1 = 9.77 in.

-----

**Punta Gorda Area (Records began May 1914) :**

Warmest Mays	Coollest Mays	Wettest Mays	Driest Mays
<b>1 83.0 in 2024</b>	1 74.0 in 1917	1 15.98 in 2018	1 0.01 in 1927
2 80.9 in 1953	2 74.1 in 1928	2 10.13 in 1946	2 0.07 in 1992
3 80.7 in 1946	3 74.9 in 1992	3 9.45 in 1991	3 0.40 in 1965
4 80.5 in 1995	4 75.0 in 1916	4 9.27 in 1959	4 0.41 in 2000
5 80.2 in 1991	5 75.1 in 1920	5 8.24 in 1968	5 0.42 in 2004
6 79.9 in 2012	6 75.2 in 2001	6 8.20 in 1963	6 0.45 in 1953
79.9 in 1933	75.2 in 1970	7 7.77 in 1972	<b>7 0.54 in 2024</b>
8 79.7 in 2010	75.2 in 1925	8 7.34 in 1979	0.54 in 2001
79.7 in 1962	9 75.6 in 1977	9 7.29 in 1923	0.54 in 1967
10 79.6 in 1956	75.6 in 1941	10 7.18 in 1932	10 0.66 in 1998
			0.66 in 1941

Normal Temperature for May at PGD = 77.9°  
 Normal Rainfall for May at PGD = 3.26 in.

-----

Warmest Springs	Coollest Springs	Wettest Springs	Driest Springs
1 77.5 in 1945	1 68.3 in 1915	1 19.21 in 1957	1 0.69 in 1967
<b>2 76.8 in 2024</b>	2 68.8 in 1916	2 18.61 in 1947	2 1.20 in 2006
3 76.5 in 1948	3 69.4 in 1931	3 17.66 in 2018	3 1.82 in 2000
4 76.1 in 1953	4 70.2 in 1971	4 17.41 in 1930	4 2.10 in 1971
5 76.0 in 1946	5 70.5 in 1941	5 15.87 in 1970	5 2.14 in 1981
6 75.9 in 2023	6 70.8 in 2005	6 15.85 in 2010	6 2.24 in 2007
7 75.7 in 1944	7 70.9 in 1993	7 15.70 in 1959	7 2.27 in 1945
8 75.6 in 2015	70.9 in 1969	8 14.94 in 2003	8 3.31 in 1935
75.6 in 1991	9 71.1 in 2010	9 14.42 in 1931	9 3.45 in 1975
10 75.2 in 2022	71.1 in 2004	10 14.14 in 1991	10 3.55 in 1974
	71.1 in 1983		11 3.64 in 2004
			<b>12 3.89 in 2024</b>

Normal Temperature for Spring at PGD = 73.2°  
 Normal Rainfall for Spring at PGD = 7.77 in.

-----

**Fort Myers Area (Records began January 1902) :**

Warmest Mays	Coollest Mays	Wettest Mays	Driest Mays
<b>1 83.2 in 2024</b>	1 74.3 in 1917	1 12.77 in 2018	1 0.04 in 2021
2 82.0 in 1995	2 74.5 in 1941	2 10.32 in 1968	2 0.20 in 2001
3 81.3 in 2023	3 74.8 in 1921	3 8.73 in 1980	3 0.34 in 1994
4 81.2 in 2010	4 74.9 in 1928	4 8.67 in 2022	0.34 in 1962
5 81.1 in 2012	5 75.0 in 1970	5 8.49 in 1925	5 0.41 in 1953
6 80.8 in 1991	6 75.1 in 1903	8.49 in 1911	6 0.47 in 2004
7 80.7 in 2021	7 75.3 in 1940	7 8.48 in 1991	7 0.50 in 1964
80.7 in 1975	75.3 in 1931	8 8.42 in 1922	8 0.54 in 2010
9 80.6 in 2017	75.3 in 1918	9 8.05 in 1989	9 0.62 in 1988
10 80.5 in 2019	10 75.5 in 1925	10 7.97 in 1957	0.62 in 1983
80.5 in 2008		...	...
80.5 in 2003		<b>56 3.83 in 2024</b>	<b>68 3.83 in 2024</b>

Normal Temperature for May at FMY = 79.3°

Normal Rainfall for May at FMY = 3.46 in.

-----

Warmest Springs	Coollest Springs	Wettest Springs	Driest Springs
1 78.5 in 2023	1 69.4 in 1931	1 24.94 in 1970	1 1.89 in 1945
2 77.9 in 2022	2 70.0 in 1915	2 18.71 in 1958	2 2.18 in 1967
77.9 in 2015	3 70.2 in 1941	3 18.23 in 1947	3 2.36 in 2006
4 77.8 in 2020	4 70.5 in 1983	4 17.77 in 1930	4 2.44 in 1902
<b>5 77.2 in 2024</b>	5 70.8 in 1960	5 16.85 in 1933	5 2.54 in 1974
6 77.0 in 2012	6 71.1 in 1971	6 15.70 in 1941	6 2.69 in 2001
7 76.9 in 1997	71.1 in 1916	7 15.39 in 1957	7 3.37 in 1953
8 76.6 in 1991	71.1 in 1910	8 14.93 in 2022	8 3.42 in 1964
9 76.4 in 2002	9 71.2 in 1940	9 14.62 in 1991	9 3.45 in 1927
10 76.3 in 2003	71.2 in 1926	10 14.26 in 2018	10 3.93 in 2017
		...	...
		<b>55 7.50 in 2024</b>	<b>68 7.50 in 2024</b>

Normal Temperature for Spring at FMY = 74.8°

Normal Rainfall for Spring at FMY = 7.97 in.

-----

For more Climate information visit our web site at the following link:  
<http://www.weather.gov/tampabay> and then go to the Climate and Past Weather  
 drop down menu above the graphical forecast images.