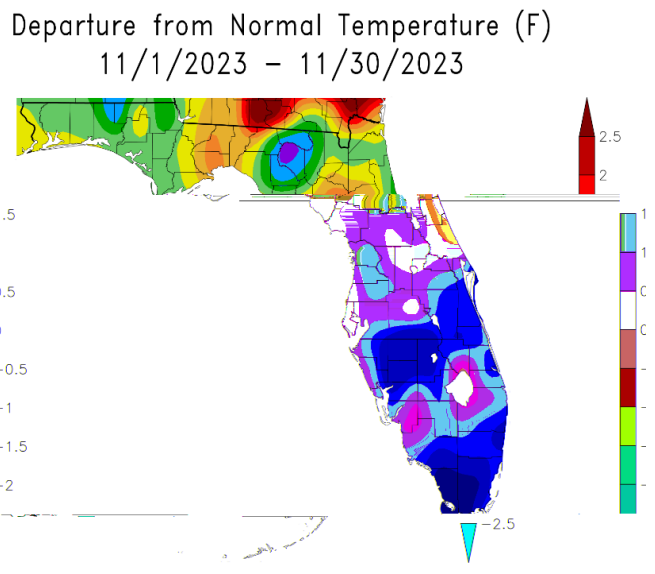
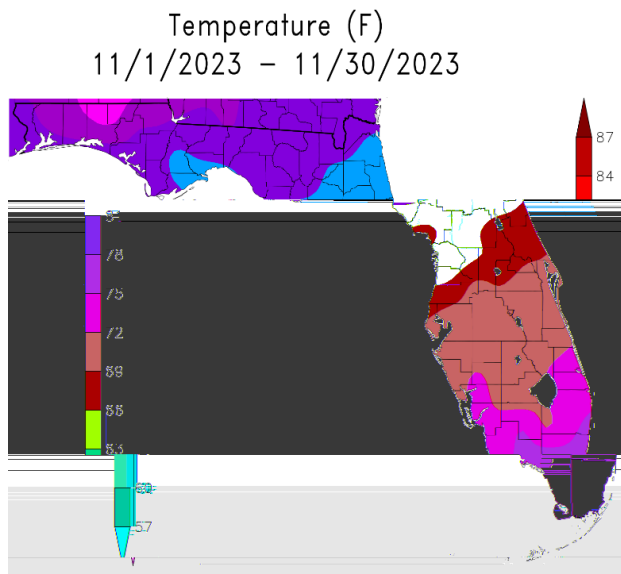


November and Autumn (Sep/Oct/Nov) 2023 Climate Summary

We saw a wide range in our temperatures this November with a couple of cold fronts moving through bringing some cooler weather, especially during the last few days which knocked several sites out of the Top Ten Warmest for November. For the month temperatures averaged from near normal to almost 2.5 degrees above normal.

NOVEMBER TEMPERATURE (°F) :

Location	November 2023 Rank	November 2023 Avg Temp	Normal Nov Temp	Dep fm Normal	Records Began
Fort Myers Area	20th Warmest (tie)	73.0°	71.5°	+1.5°	Jan 1902
Punta Gorda Area	16th Warmest	72.6°	70.2°	+2.4°	May 1914
Sarasota-Bradenton Area	21st Warmest (tie)	71.1°	70.1°	+1.0°	Jan 1911
Archbold Bio Stn	11th Warmest	70.8°	68.9°	+1.9°	Jan 1969
Tampa Area	24th Warmest (tie)	70.4°	69.8°	+0.6°	Apr 1890
Venice	24th Warmest (tie)	70.4°	69.9°	+0.5°	May 1955
St Petersburg Area	64th Coolest (tie)	70.4°	70.6°	-0.2°	Aug 1914
Plant City	20th Warmest (tie)	70.2°	69.4°	+0.8°	Sep 1892
Lakeland Area	22nd Warmest	70.1°	69.2°	+0.9°	Jan 1915
Wauchula 2 N	28th Warmest	69.8°	67.8°	+2.0°	Jan 1933
Bartow	32nd Warmest (tie)	69.5°	68.3°	+0.8°	Jun 1892
Winter Haven Area	41st Coolest (tie)	69.5°	69.8°	-0.3°	Mar 1941
Myakka River State Park	32nd Warmest (tie)	69.1°	69.1°	0.0°	Mar 1956
St. Leo	49th Warmest (tie)	67.4°	66.8°	+0.6°	Apr 1895
Brooksville Area	57th Warmest (tie)	66.3°	65.1°	+1.2°	Jan 1892
Chiefland 5 ESE	19th Warmest (tie)	65.1°	62.7°	+2.4°	Jul 1956

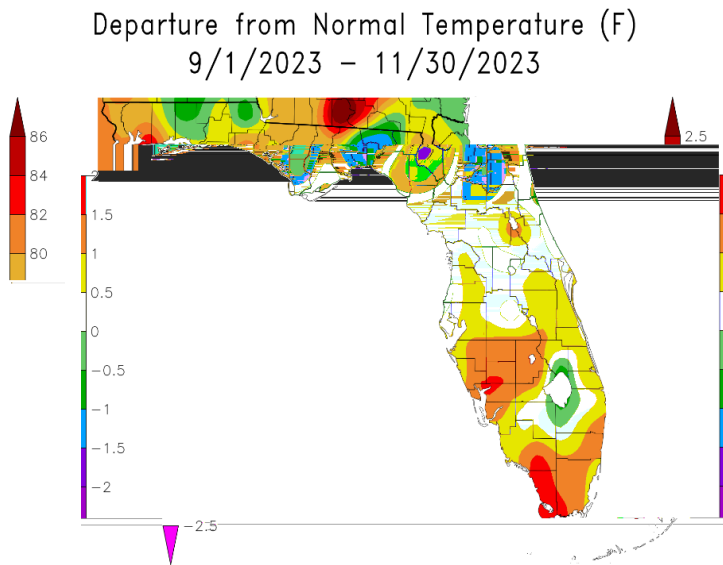
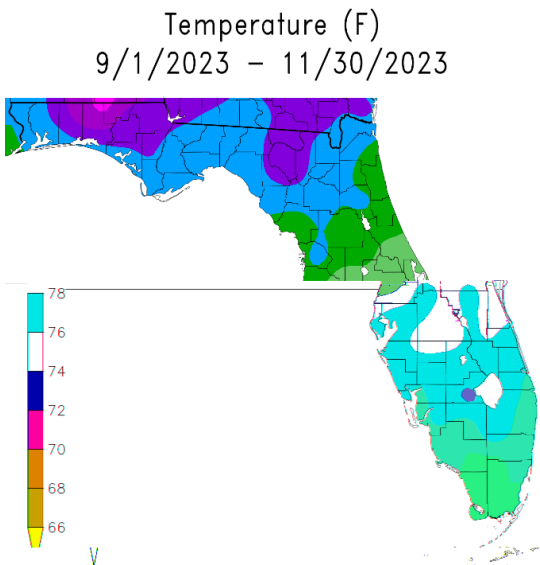


Graphics Source: NOAA Regional Climate Centers

As for Autumn, we had temperatures near to about 2 degrees above normal in September, 1 degree below to 1 degree above average in October, and near to about 2.5 degrees above normal this November. Overall, this Autumn temperatures averaged near to almost 2 degrees above normal which placed a few locations in the Top Ten Warmest for Autumn.

AUTUMN (SEPTEMBER/OCTOBER/NOVEMBER) TEMPERATURE (°F) :

Location	Autumn 2023 Rank	Avg Temp	Normal Aut Temp	Dep fm Normal	Records Began
Fort Myers Area	14th Warmest	78.4°	77.2°	+1.2°	Jan 1902
Punta Gorda Area	7th Warmest	78.2°	76.5°	+1.7°	May 1914
Sarasota-Bradenton Area	8th Warmest	77.2°	76.5°	+0.7°	Jan 1911
Tampa Area	11th Warmest (tie)	77.2°	76.6°	+0.6°	Apr 1890
St Petersburg Area	28th Warmest (tie)	77.2°	77.0°	+0.2°	Aug 1914
Venice	10th Warmest (tie)	77.0°	76.0°	+1.0°	May 1955
Plant City	8th Warmest	76.8°	76.1°	+0.7°	Sep 1892
Lakeland Area	14th Warmest (tie)	76.3°	75.7°	+0.6°	Jan 1915
Archbold Bio Stn	9th Warmest (tie)	75.8°	75.1°	+0.7°	Jan 1969
Winter Haven Area	40th Coolest (tie)	75.8°	76.4	-0.6°	Jan 1941
Wauchula 2 N	25th Warmest	75.4°	74.6°	+0.8°	Jan 1933
Myakka River State Park	22nd Coolest (tie)	75.2°	75.6°	-0.4°	Mar 1956
Bartow	31st Warmest	75.1°	74.8°	+0.3°	Jun 1892
St. Leo	52nd Warmest (tie)	73.9°	73.6°	+0.3°	Apr 1895
Brooksville Area	51st Warmest (tie)	73.3°	72.7°	+0.6°	Jan 1892
Chiefland 5 ESE	14th Warmest (tie)	72.2°	70.9°	+1.3°	Jul 1956

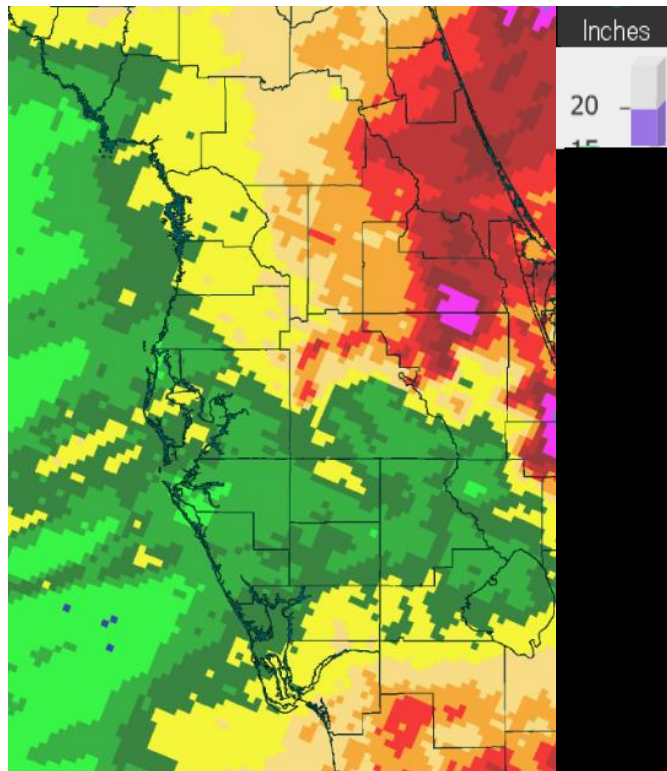


Graphics Source: NOAA Regional Climate Centers

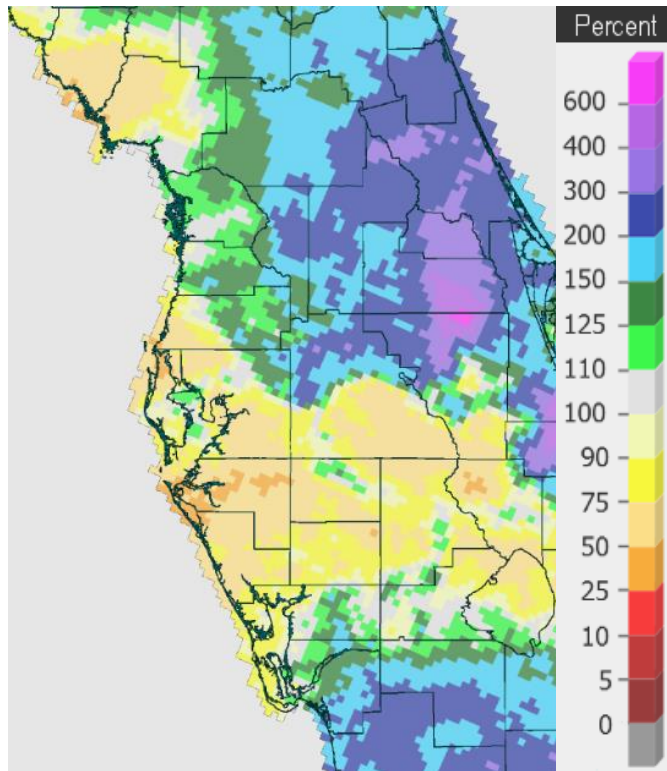
Looking at rainfall, many days in November 2023 were dry, which is pretty typical, but we did see a few fronts move through bringing some decent rainfall to parts of the Nature Coast and Southwest Florida.

NOVEMBER RAINFALL (inches):

Location	November 2023 Rank	Rain Total	Normal Nov Rain	Dep fm Normal	Records Began
Fort Myers Area	19th Wettest	2.97	1.78	+1.19	Jan 1902
Plant City	29th Wettest (tie)	2.88	1.76	+1.12	Sep 1892
Brooksville Area	25th Wettest	2.84	1.59	+1.25	Jan 1892
St. Leo	42nd Wettest	2.83	1.86	+0.97	Apr 1895
Lakeland Area	30th Wettest	2.69	1.93	+0.76	Jan 1915
Wauchula 2 N	21st Wettest (tie)	2.48	1.96	+0.52	Jan 1933
Winter Haven Area	31st Wettest	2.03	1.45	+0.58	Jan 1941
Tampa Area	50th Wettest	1.85	1.40	+0.45	Apr 1890
St. Petersburg Area	46th Wettest	1.66	1.46	+0.20	Aug 1914
Bartow	62nd Wettest	1.64	1.49	+0.15	Jun 1892
Venice	31st Driest	1.34	1.54	-0.20	May 1955
Punta Gorda Area	55th Driest	1.29	2.12	-0.83	May 1914
Myakka River State Pk	35th Driest	1.25	2.02	-0.77	Sep 1943
Archbold Bio Stn	25th Driest	1.19	1.74	-0.55	Jan 1969
Chiefland 5 ESE	16th Driest	1.06	2.22	-1.16	Jul 1956
Tarpon Springs	34th Driest	0.74	1.90	-1.16	Jan 1892
Sarasota-Bradenton Area	37th Driest	0.67	1.81	-1.14	Jan 1911



Rainfall November 2023

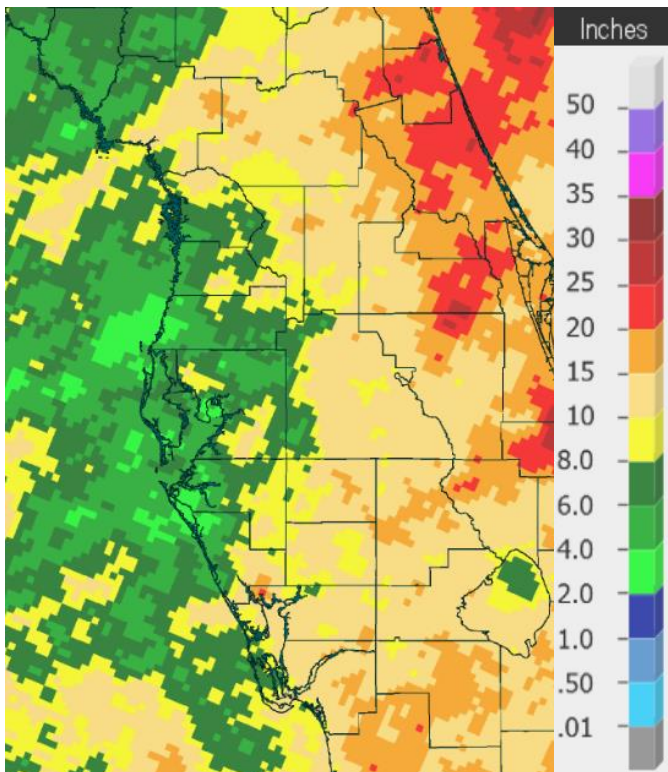


Percent of Normal

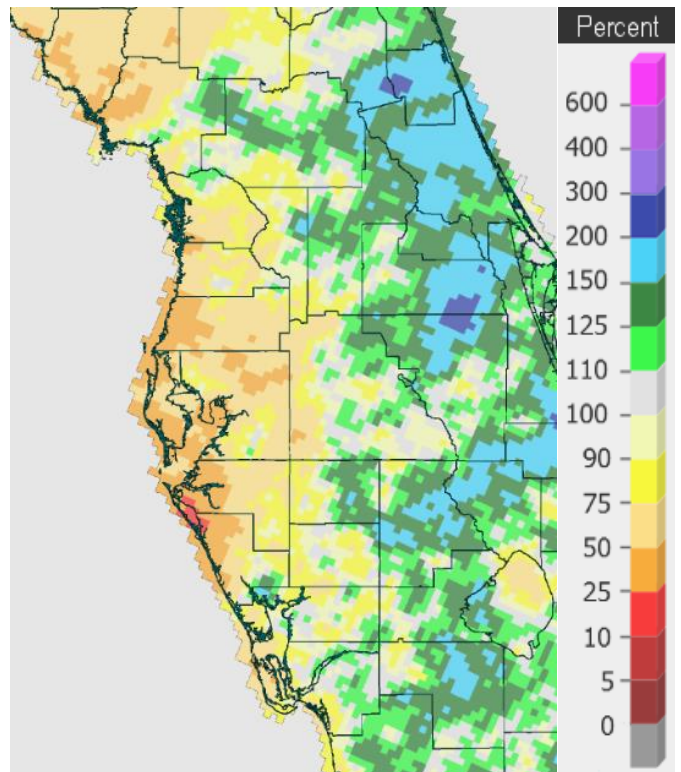
As for rainfall during Autumn it remained variable with totals ranging from as little as 4 inches to about 12 inches. Unfortunately, the lower totals continued to be in the drought-stricken areas near the coast from around Tampa Bay south through Sarasota and Venice.

AUTUMN (SEPTEMBER/OCTOBER/NOVEMBER) RAINFALL (inches):

Location	Autumn 2023 Rank	Autumn 2023 Rain Total	Normal Aut Rain	Dep fm Normal	Records Began
Wauchula 2 N	14th Wettest	15.64	11.37	+4.27	Jan 1933
Archbold Bio Stn	28th Driest	12.28	12.32	-0.04	Jan 1969
Fort Myers Area	56th Driest (tie)	12.02	13.86	-1.84	Jan 1902
Brooksville Area	51st Wettest	11.75	10.17	+1.58	Jan 1892
Bartow	64th Driest	11.56	11.83	-0.27	Jun 1892
Punta Gorda Area	48th Driest	11.46	12.01	-0.55	May 1914
Winter Haven Area	39th Wettest	10.23	8.98	+1.25	Jan 1941
St. Leo	29th Driest	8.42	11.55	-3.13	Apr 1895
Tampa Area	41st Driest	8.20	9.83	-1.63	Apr 1890
Lakeland Area	15th Driest	6.81	12.59	-5.78	Jan 1915
Myakka River State Pk	3rd Driest	6.07	13.66	-7.59	Sep 1943
St. Petersburg Area	10th Driest	5.82	10.28	-4.46	Aug 1914
Venice	4th Driest	5.68	12.05	-6.37	May 1955
Plant City	12th Driest	5.29	11.33	-6.04	Sep 1892
Tarpon Springs	4th Driest	4.03	12.12	-8.09	Jan 1892
Sarasota-Bradenton Area	1st Driest	3.25	10.57	-7.32	Jan 1911



Rainfall Sep 1-Nov 30, 2023



Percent of Normal

On the following pages are tables of the Top Ten Warmest, Coolest, Wettest, and Driest Novembers and Autumns at some official NWS locations, which include the average/total for this November and Autumn where available, and the 1991-2020 Normal (average) temperature and rainfall for November and Autumn.

CHIEFLAND 5 SE (records began in July 1956):

Warmest Novembers		Coolest Novembers		Wettest Novembers		Driest Novembers	
1	69.4 in 1985	1	56.6 in 1976	1	7.52 in 1972	1	Trace in 1978
2	69.2 in 1998	2	56.7 in 2008	2	6.47 in 1997	2	0.15 in 2012
3	68.9 in 1986	3	57.3 in 1970	3	6.02 in 1987	3	0.25 in 2016
4	68.6 in 1994	4	58.2 in 1962	4	5.94 in 2002	4	0.33 in 1956
5	67.5 in 1982	5	58.3 in 1968	5	5.25 in 1958	5	0.35 in 1970
6	67.0 in 2022	6	59.2 in 1969	6	4.95 in 1983	6	0.48 in 1998
7	66.9 in 2020	7	59.3 in 2021	7	4.80 in 1963	7	0.61 in 1990
	66.9 in 1973	8	59.4 in 2014	8	4.73 in 2013	8	0.62 in 1991
9	66.5 in 1958	9	59.7 in 1984	9	4.55 in 1981	9	0.66 in 2001
10	66.3 in 1978	10	59.8 in 1963	10	4.50 in 1986	10	0.82 in 1993
...						...	
19	65.1 in 2023					16	1.06 in 2023
	65.1 in 1964						

Normal Temperature for November at CHIF1 = 62.7°
 Normal Rainfall for November at CHIF1 = 2.22 inches

Warmest Autumns		Coolest Autumns		Wettest Autumns		Driest Autumns	
1	75.2 in 2018	1	67.1 in 1976	1	26.52 in 2004	1	2.05 in 1978
2	75.0 in 2020	2	67.9 in 2008	2	24.26 in 1983	2	3.83 in 2008
3	74.9 in 1998	3	68.7 in 2006	3	20.54 in 1964	3	4.20 in 1961
4	74.2 in 1986	4	68.8 in 1968	4	18.65 in 1959	4	5.13 in 2010
5	73.9 in 1985	5	68.9 in 2000	5	17.59 in 1985	5	5.37 in 1970
6	73.7 in 1959	6	69.1 in 1963	6	16.94 in 1998	6	5.38 in 2003
7	73.4 in 2019		69.1 in 1969	7	16.38 in 1997	7	6.11 in 2022
8	73.0 in 1973	8	69.3 in 1956	8	15.91 in 1960	8	6.24 in 1991
9	72.9 in 2016		69.3 in 1962	9	15.67 in 2002	9	6.61 in 1974
10	72.6 in 1994	10	69.6 in 2010	10	15.26 in 2017	10	6.65 in 2005
11	72.5 in 1978						
	72.5 in 1960						
13	72.4 in 1990						
14	72.2 in 2023						
	72.2 in 1971						

Normal Temperature for Autumn at CHIF1 = 70.9°
 Total Rainfall for Autumn 2023 = Few Days Missing in September
 Normal Rainfall for Autumn at CHIF1 = 11.21 inches

INVERNESS 3 SE (records began in July 1948):

Warmest Novembers	Coollest Novembers	Wettest Novembers	Driest Novembers
1 73.1 in 2015	1 59.0 in 1991	1 7.73 in 1980	1 0.00 in 2004
2 71.0 in 2020	2 59.5 in 1976	2 6.40 in 1997	0.00 in 1978
3 70.3 in 1958	3 60.3 in 2002	3 6.21 in 1972	3 0.01 in 2016
4 69.7 in 2022	4 60.5 in 2014	4 5.48 in 1951	4 0.02 in 1950
5 69.3 in 1964	5 60.6 in 1997	5 4.90 in 2015	5 0.07 in 2012
69.3 in 1978	6 61.0 in 1950	6 4.78 in 2014	6 0.23 in 1993
7 68.8 in 1957	7 61.3 in 2012	7 4.69 in 1988	7 0.25 in 1967
8 68.6 in 1998	8 61.4 in 1995	8 4.35 in 2022	8 0.28 in 1956
9 68.5 in 1973	9 61.6 in 2000	9 3.77 in 2005	9 0.36 in 2001
68.5 in 1960	10 61.7 in 1949	10 3.70 in 2017	10 0.38 in 1966

Average Temperature for November 2023 = Not Available Yet
Normal Temperature for November at INVF1 = 64.3°

Total Rainfall for November 2023 = Not Available Yet
Normal Rainfall for November at INVF1 = 1.83 inches

Warmest Autumns	Coollest Autumns	Wettest Autumns	Driest Autumns
1 76.8 in 2020	1 68.4 in 1976	1 21.53 in 2017	1 2.08 in 1967
2 76.1 in 2015	2 69.4 in 1997	2 21.34 in 1960	2 2.92 in 1978
3 75.1 in 1958	3 70.2 in 1991	3 21.07 in 1950	3 4.19 in 1961
4 75.0 in 2019	4 70.4 in 2006	4 19.73 in 2021	4 4.56 in 1974
5 74.9 in 1998	5 70.6 in 2000	5 19.55 in 1992	5 4.97 in 2010
74.9 in 1960	6 70.7 in 1987	6 19.27 in 1997	6 5.13 in 2003
74.9 in 1959	7 70.8 in 2014	7 18.83 in 2004	7 5.37 in 1954
8 74.2 in 1948	8 71.1 in 1956	8 17.75 in 2016	8 5.47 in 2012
9 74.1 in 2009	9 71.3 in 2002	9 17.32 in 2001	9 5.85 in 2000
74.1 in 2007	10 71.5 in 1996	10 16.51 in 1988	10 6.14 in 1996

Average Temperature for Autumn 2023 = Not Available Yet
Normal Temperature for Autumn at INVF1 = 71.9°

Total Rainfall for Autumn 2023 = Not Available Yet
Normal Rainfall for Autumn at INVF1 = 10.56 inches

BROOKSVILLE AREA (records began in January 1892):

Warmest Novembers		Coolest Novembers		Wettest Novembers		Driest Novembers	
1	73.2 in 2015	1	57.5 in 1901	1	9.31 in 1916	1	0.00 in 1967
2	72.7 in 1948	2	60.3 in 2008	2	9.17 in 1987	2	Trace in 2016
3	72.6 in 1946	3	60.5 in 1892	3	8.30 in 1951		Trace in 1931
4	71.0 in 2020	4	60.8 in 2014	4	7.08 in 2014	4	0.01 in 1978
	71.0 in 1958	5	61.1 in 1923	5	6.64 in 1937	5	0.05 in 1928
6	70.7 in 1994	6	61.3 in 2000	6	6.56 in 1980	6	0.12 in 2001
7	70.5 in 1973	7	61.4 in 2012	7	6.28 in 1999	7	0.15 in 1913
	70.5 in 1896		61.4 in 1917	8	6.14 in 1972	8	0.18 in 1940
9	70.1 in 1905	9	61.8 in 2002	9	5.49 in 1932	9	0.22 in 1956
10	69.8 in 2022	10	61.9 in 1962	10	5.14 in 1988		0.22 in 1924
	69.8 in 1988				5.14 in 1920		0.22 in 1900
	69.8 in 1929			
...		...		25	2.84 in 2023	105	2.84 in 2023
57	66.3 in 2023	60	66.3 in 2023				
	66.3 in 2007		66.3 in 2007				

Normal Temperature for November at BKV = 65.1°

Normal Rainfall for November at BKV = 1.59 inches

Warmest Autumns		Coolest Autumns		Wettest Autumns		Driest Autumns	
1	76.6 in 2020	1	69.3 in 1892	1	27.84 in 1950	1	2.30 in 1903
2	76.0 in 1911	2	69.5 in 1901	2	24.74 in 1912	2	3.58 in 2008
3	75.9 in 2015	3	70.2 in 1920	3	22.68 in 1894		3.58 in 1978
4	75.7 in 1905	4	70.3 in 2008	4	21.62 in 1947	4	3.87 in 1967
5	75.4 in 1941	5	70.4 in 1923	5	21.50 in 1922	5	3.97 in 1909
	75.4 in 1919	6	70.5 in 2000	6	21.46 in 1995	6	4.10 in 2010
	75.4 in 1915	7	70.8 in 2006	7	21.24 in 1921	7	4.58 in 1940
8	75.3 in 1946	8	70.9 in 2014	8	20.56 in 1938	8	4.61 in 1991
	75.3 in 1927		70.9 in 1894	9	20.36 in 1911	9	5.37 in 2015
10	75.2 in 2018	10	71.0 in 1953	10	19.88 in 1988	10	5.61 in 1961
	75.2 in 1973			
...		...		51	11.75 in 2023	79	11.75 in 2023
51	73.3 in 2023	50	73.3 in 2023				
	73.3 in 1981		73.3 in 1981				
	73.3 in 1945		73.3 in 1945				
	73.3 in 1921		73.3 in 1921				

Normal Temperature for Autumn at BKV = 72.7°

Normal Rainfall for Autumn at BKV = 10.17 inches

ST LEO (records began in April 1895):

Warmest Novembers		Coolest Novembers		Wettest Novembers		Driest Novembers	
1	75.1 in 1986	1	60.8 in 1917	1	12.48 in 1988	1	Trace in 1960
2	73.6 in 1985	2	61.3 in 1901	2	8.34 in 1951	2	0.02 in 1978
3	73.2 in 1946	3	61.7 in 1910	3	7.36 in 1987	3	0.03 in 1931
4	73.1 in 1948	4	62.2 in 1930	4	7.21 in 2014		0.03 in 1928
5	72.0 in 1998	5	62.3 in 2014	5	6.72 in 2022	5	0.06 in 2016
6	71.8 in 2015	6	62.5 in 1923	6	6.22 in 1916	6	0.08 in 2012
	71.8 in 1994	7	62.6 in 1970	7	6.12 in 1963	7	0.21 in 1993
8	71.5 in 1982	8	62.8 in 1933	8	6.06 in 1972	8	0.22 in 1940
9	71.4 in 1958		62.8 in 1932	9	5.84 in 1911	9	0.23 in 1913
10	71.3 in 2020		62.8 in 1904	10	5.61 in 1918	10	0.26 in 1945
	71.3 in 1978			
...		...		42	2.38 in 2023	88	2.38 in 2023
49	67.4 in 2023	79	67.4 in 2023				
	67.4 in 1971		67.4 in 1971				
	67.4 in 1906		67.4 in 1906				

Normal Temperature for November at STLf1 = 66.8°

Normal Rainfall for November at STLf1 = 1.86 inches

Warmest Autumns		Coolest Autumns		Wettest Autumns		Driest Autumns	
1	77.9 in 1985	1	69.8 in 1917	1	25.80 in 1988	1	1.52 in 1978
2	77.4 in 1986	2	70.1 in 1903	2	25.13 in 1912	2	3.19 in 1940
3	76.5 in 2020	3	70.2 in 1930	3	24.60 in 1922	3	3.56 in 2010
	76.5 in 1998	4	70.7 in 1920	4	22.73 in 1953	4	3.81 in 1909
5	76.4 in 2007	5	71.0 in 1976	5	21.77 in 1997	5	4.14 in 1967
6	76.2 in 1946		71.0 in 1923	6	21.48 in 1982	6	4.76 in 1991
7	76.1 in 2009	7	71.1 in 1910	7	21.40 in 1950	7	5.09 in 2008
	76.1 in 1941	8	71.4 in 1943	8	21.29 in 1921	8	5.11 in 2018
9	75.9 in 2004	9	71.5 in 2014	9	20.71 in 1949	9	5.33 in 1931
10	75.8 in 2018	10	71.8 in 1956	10	20.35 in 2004	10	5.63 in 1961
	75.8 in 2003		71.8 in 1922	
...		...		101	8.42 in 2023	29	8.42 in 2023
52	73.9 in 2023	73	73.9 in 2023				
	73.9 in 1996		73.9 in 1996				
	73.9 in 1951		73.9 in 1951				
	73.9 in 1949		73.9 in 1949				

Normal Temperature for Autumn at STLf1= 73.6°

Normal Rainfall for Autumn at STLf1 = 11.55 inches

TARPON SPRINGS (records began in January 1892):

Warmest Novembers		Coolest Novembers		Wettest Novembers		Driest Novembers	
1	75.9 in 1986	1	59.6 in 2004	1	9.13 in 1988	1	0.00 in 2016
2	74.4 in 1985	2	60.0 in 1901	2	8.18 in 1916	2	Trace in 1939
3	74.3 in 1946	3	61.5 in 1917	3	6.99 in 1997		Trace in 1931
4	73.5 in 2015	4	61.7 in 1962	4	6.63 in 1992	4	0.02 in 1978
5	72.6 in 1994		61.7 in 1892	5	6.09 in 2014	5	0.06 in 1933
6	72.3 in 1998	6	61.9 in 1910	6	5.80 in 1963	6	0.08 in 1942
7	71.8 in 2003	7	62.5 in 1904	7	5.57 in 1920	7	0.09 in 1940
8	71.6 in 1896	8	62.6 in 2014	8	5.49 in 2020		0.09 in 1928
9	71.4 in 1982		62.6 in 1970	9	5.19 in 1955	9	0.10 in 1930
10	71.3 in 1929	10	63.0 in 1976	10	5.18 in 1896	10	0.13 in 1924
	71.3 in 1919		63.0 in 1912	
				96	0.74 in 2023	34	0.74 in 2023
					0.74 in 1991		0.74 in 1991

Average Temperature for November 2023 = Few Days Missing/Unrepresentative
 Normal Temperature for November at TRPF1 = 67.5°
 Normal Rainfall for November at TRPF1 = 1.90 inches

Warmest Autumns		Coolest Autumns		Wettest Autumns		Driest Autumns	
1	78.1 in 1985	1	70.8 in 1917	1	28.87 in 1911	1	1.85 in 2005
2	78.0 in 1986		70.8 in 1892	2	28.34 in 1988	2	3.33 in 1978
3	77.9 in 1919	3	71.4 in 1903	3	24.31 in 2014	3	3.44 in 1967
4	77.6 in 2018	4	71.5 in 1976	4	22.25 in 1997	4	4.03 in 2023
5	76.8 in 2020	5	71.7 in 1967	5	21.71 in 1983	5	4.62 in 2008
	76.8 in 1946		71.7 in 1901	6	21.70 in 1912	6	4.85 in 2010
7	76.7 in 2015	7	71.9 in 1963	7	21.43 in 1975	7	4.86 in 1927
	76.7 in 1994		71.9 in 1962	8	20.78 in 1995	8	5.57 in 1909
9	76.6 in 2019		71.9 in 1940		20.78 in 1959	9	5.74 in 1930
	76.6 in 1998		71.9 in 1904	10	20.60 in 1971	10	5.99 in 1981
			71.9 in 1899				

Average Temperature for Autumn 2023 = Several Days Missing/Unrepresentative
 Normal Temperature for Autumn at TRPF1 = 74.8°
 Normal Rainfall for Autumn at TRPF1 = 12.12 inches

TAMPA AREA (records began in April 1890):

Warmest Novembers	Coollest Novembers	Wettest Novembers	Driest Novembers
1 76.3 in 1986	1 61.4 in 1901	1 6.12 in 1963	1 Trace in 1960
2 76.2 in 2015	2 61.9 in 1970	2 5.97 in 1988	2 0.01 in 2016
3 74.6 in 2020	3 62.3 in 1968	3 5.40 in 2020	0.01 in 1978
4 73.7 in 1946	4 62.5 in 1962	4 5.38 in 1944	4 0.04 in 1931
5 73.6 in 1948	5 62.8 in 1976	5 5.26 in 2014	5 0.05 in 1928
73.6 in 1985	6 62.9 in 1969	6 5.18 in 2022	6 0.08 in 1927
7 72.7 in 1958	62.9 in 1917	7 4.89 in 1953	7 0.10 in 2001
8 72.6 in 2022	8 63.3 in 1910	8 4.85 in 1925	0.10 in 1942
9 72.5 in 1998	9 63.4 in 1923	9 4.75 in 1941	9 0.11 in 2007
10 72.3 in 1994	10 63.7 in 1949	10 4.36 in 1987	10 0.12 in 2017
...			0.12 in 1974
24 70.4 in 2023	
70.4 in 2005		50 1.85 in 2023	85 1.85 in 2023

Normal Temperature for November at TPA = 69.8°

Normal Rainfall for November at TPA = 1.40 inches

Warmest Autumns	Coollest Autumns	Wettest Autumns	Driest Autumns
1 79.7 in 2020	1 71.0 in 1976	1 24.38 in 1894	1 3.19 in 2010
2 79.0 in 2015	2 71.6 in 1903	2 22.83 in 1912	2 3.30 in 1909
3 78.9 in 2018	71.6 in 1891	3 20.45 in 1997	3 3.62 in 1961
4 78.4 in 1986	4 71.7 in 1968	4 19.80 in 1922	4 4.06 in 1942
5 78.1 in 2019	5 71.8 in 1917	5 19.62 in 1988	5 4.21 in 1940
6 77.9 in 2017	71.8 in 1901	6 19.07 in 1947	6 4.25 in 1913
7 77.8 in 1985	7 71.9 in 1923	7 18.57 in 2022	7 4.35 in 1974
8 77.7 in 2016	8 72.2 in 1892	8 18.15 in 1953	8 5.07 in 1967
9 77.5 in 1919	9 72.3 in 1962	9 17.60 in 1890	9 5.22 in 1984
10 77.3 in 2021	10 72.4 in 1956	10 16.58 in 1911	10 5.33 in 2003
11 77.2 in 2023	72.4 in 1910
77.2 in 1998		94 8.20 in 2023	41 8.20 in 2023

Normal Temperature for Autumn at TPA = 76.6°

Normal Rainfall for Autumn at TPA = 9.83 inches

ST PETERSBURG (records began in August 1914):

Warmest Novembers	Coollest Novembers	Wettest Novembers	Driest Novembers
1 77.4 in 1986	1 63.9 in 1917	1 6.94 in 1988	1 0.00 in 1931
2 76.3 in 1985	2 64.3 in 1962	2 6.85 in 1953	2 0.02 in 1960
3 74.9 in 2015	3 64.7 in 1949	3 6.80 in 1987	3 0.03 in 2016
4 74.8 in 1946	4 65.1 in 1976	4 6.18 in 2020	0.03 in 1942
5 74.5 in 1948	5 65.2 in 1995	5 6.04 in 1963	5 0.04 in 2001
6 74.3 in 2020	65.2 in 1951	6 5.71 in 1916	6 0.10 in 1978
7 73.8 in 2005	7 65.3 in 1950	7 5.63 in 1925	7 0.12 in 1974
8 73.7 in 1978	8 65.4 in 1954	8 5.08 in 1954	8 0.14 in 1930
9 73.5 in 1958	9 65.7 in 1956	9 5.03 in 1968	9 0.15 in 1928
10 72.9 in 1994	65.7 in 1923	10 5.02 in 1915	10 0.18 in 1946
72.9 in 1929	
...	...	46 1.66 in 2023	65 1.66 in 2023
46 70.4 in 2023	64 70.4 in 2023		
70.4 in 1974	70.4 in 1974		

Normal Temperature for November at SPG = 70.6°

Normal Rainfall for November at SPG = 1.46 inches

Warmest Autumns	Coollest Autumns	Wettest Autumns	Driest Autumns
1 80.0 in 1985	1 72.6 in 1917	1 32.75 in 1988	1 2.13 in 2010
2 79.9 in 1986	2 73.2 in 1956	2 30.04 in 1953	2 4.00 in 1990
3 79.8 in 2005	3 73.4 in 1952	3 26.31 in 1986	3 4.49 in 1967
4 79.3 in 2020	4 73.5 in 1954	4 26.30 in 1952	4 4.69 in 2008
5 79.1 in 2015	73.5 in 1953	5 21.83 in 1997	5 4.84 in 1964
6 79.0 in 2018	6 73.6 in 1976	6 21.06 in 1922	6 5.01 in 1940
7 78.9 in 2019	73.6 in 1962	7 20.14 in 1954	7 5.52 in 1927
8 78.4 in 2013	73.6 in 1923	8 19.12 in 1918	8 5.61 in 1966
78.4 in 1941	9 73.7 in 1943	9 19.07 in 2001	9 5.73 in 1965
10 78.3 in 2010	10 73.9 in 1950	10 18.52 in 1959	10 5.82 in 2023
78.3 in 1919			
...	...		
28 77.2 in 2023	77.2 in 2023		
77.2 in 2003	77.2 in 2003		
77.2 in 1990	77.2 in 1990		
77.2 in 1915	77.2 in 1915		

Normal Temperature for Autumn at SPG = 77.0°

Normal Rainfall for Autumn at SPG = 10.28 inches

PLANT CITY (records began in September 1892):

Warmest Novembers	Coollest Novembers	Wettest Novembers	Driest Novembers
1 75.7 in 1986	1 61.8 in 1932	1 7.88 in 1953	1 0.00 in 1960
2 74.6 in 2015	2 62.0 in 1930	2 7.34 in 1988	0.00 in 1931
3 74.3 in 1948	3 62.1 in 1917	3 6.89 in 2020	0.00 in 1905
4 74.2 in 2020	4 62.4 in 1933	4 6.75 in 2014	4 0.01 in 2007
5 73.9 in 1946	5 62.6 in 1904	5 6.46 in 1963	5 0.05 in 2012
6 73.8 in 2022	6 62.9 in 1912	6 5.90 in 1918	6 0.10 in 1928
7 72.7 in 1985	7 63.1 in 2014	7 5.56 in 1971	0.10 in 1924
8 72.5 in 1896	8 63.3 in 1962	8 4.89 in 2022	8 0.13 in 1940
9 72.3 in 1994	63.3 in 1949	9 4.63 in 1980	9 0.15 in 2017
72.3 in 1958	10 63.4 in 1926	10 4.52 in 1987	0.15 in 1978
...	
20 70.2 in 2023		29 2.88 in 2023	96 2.88 in 2023
70.2 in 2013		2.88 in 1926	2.88 in 1926

Normal Temperature for November at PLCF1 = 69.4°
 Normal Rainfall for November at PLCF1 = 1.76 inches

Warmest Autumns	Coollest Autumns	Wettest Autumns	Driest Autumns
1 79.6 in 2020	1 70.4 in 1930	1 25.05 in 1947	1 1.89 in 1909
2 78.4 in 2018	2 70.8 in 1932	2 23.20 in 1894	2 1.99 in 1961
3 78.3 in 2019	3 71.2 in 1940	3 23.04 in 1988	3 3.56 in 1940
4 77.9 in 1986	4 71.5 in 2000	4 21.72 in 1953	4 4.08 in 1991
5 77.4 in 2015	5 71.6 in 1976	5 20.54 in 2020	5 4.29 in 1927
6 77.2 in 2022	6 71.7 in 1943	6 20.48 in 2022	6 4.41 in 1990
77.2 in 1985	7 72.0 in 1937	7 20.36 in 2014	7 4.55 in 2010
8 76.8 in 2023	72.0 in 1909	8 20.15 in 2004	8 4.57 in 1939
9 76.4 in 1946	9 72.2 in 1968	9 20.06 in 1998	9 4.63 in 1967
10 76.2 in 2021	10 72.4 in 1926	10 19.92 in 1959	10 4.67 in 2008
			11 4.98 in 1964
			12 5.29 in 2023

Normal Temperature for Autumn at PLCF1 = 76.1°
 Normal Rainfall for Autumn at PLCF1 = 11.33 inches

LAKELAND AREA (records began in January 1915):

Warmest Novembers	Coollest Novembers	Wettest Novembers	Driest Novembers
1 76.9 in 1986	1 62.6 in 1970	1 7.56 in 2014	1 0.00 in 1924
2 75.4 in 2015	2 62.9 in 1962	2 7.19 in 1988	2 Trace in 2016
3 73.4 in 1985	3 63.0 in 1969	3 6.08 in 1987	Trace in 1960
4 73.3 in 1994	4 63.4 in 1949	4 5.94 in 1941	Trace in 1917
73.3 in 1948	5 63.5 in 1976	5 5.80 in 2020	5 0.03 in 1931
6 73.1 in 1946	63.5 in 1951	6 5.71 in 1963	6 0.05 in 1928
7 73.0 in 2020	63.5 in 1950	7 5.54 in 1980	7 0.07 in 1950
8 72.6 in 2022	8 63.7 in 1968	8 5.37 in 1953	8 0.08 in 2012
9 71.6 in 2003	9 63.9 in 2008	9 4.59 in 2018	9 0.10 in 1991
71.6 in 1988	10 64.0 in 1923	10 4.48 in 1997	10 0.11 in 1940
...	
22 70.1 in 2023		30 2.69 in 2023	80 2.69 in 2023

Normal Temperature for November at LLDF1 = 69.2°
 Normal Rainfall for November at LLDF1 = 1.93 inches

Warmest Autumns	Coollest Autumns	Wettest Autumns	Driest Autumns
1 79.2 in 1986	1 71.5 in 1976	1 22.45 in 2014	1 2.99 in 1961
2 78.6 in 2020	2 72.1 in 1943	2 21.46 in 2004	2 3.21 in 1940
3 78.3 in 2015	3 72.2 in 1923	3 19.78 in 1947	3 4.16 in 1942
4 78.1 in 1985	4 72.3 in 2006	4 19.52 in 1918	4 4.25 in 1927
5 78.0 in 2018	72.3 in 1968	5 18.91 in 2022	5 4.28 in 1934
6 77.4 in 2019	72.3 in 1956	6 18.47 in 1998	6 4.58 in 2010
7 77.0 in 1994	7 72.4 in 1967	7 18.39 in 1929	7 4.69 in 2008
8 76.8 in 2009	8 72.5 in 1940	8 18.29 in 1953	8 5.01 in 1967
9 76.7 in 1990	9 72.6 in 1954	9 17.36 in 1997	9 5.12 in 1978
10 76.6 in 2017	10 72.7 in 1962	10 17.09 in 1989	10 5.35 in 1974
11 76.4 in 1998	72.7 in 1953		11 5.49 in 2003
76.4 in 1993	72.7 in 1924		12 5.56 in 1984
76.4 in 1941			13 6.39 in 1921
14 76.3 in 2023			14 6.41 in 1990
76.3 in 2022			15 6.81 in 2023

Normal Temperature for Autumn at LLDF1 = 75.7°
 Normal Rainfall for Autumn at LLDF1 = 12.59 inches

WINTER HAVEN AREA (records began in January 1941):

Warmest Novembers	Coollest Novembers	Wettest Novembers	Driest Novembers
1 76.8 in 1986	1 63.1 in 1962	1 7.81 in 1988	1 0.00 in 1960
2 75.6 in 1948	2 63.2 in 1970	2 7.13 in 1987	0.00 in 1950
3 75.1 in 2015	3 63.9 in 2008	3 6.76 in 1953	3 Trace in 2011
4 74.9 in 1985	63.9 in 1968	4 6.27 in 1963	4 0.01 in 2012
5 74.5 in 1946	5 64.1 in 1976	5 5.32 in 1994	5 0.07 in 2016
6 73.5 in 2020	6 64.5 in 1949	6 5.21 in 1980	6 0.13 in 1966
7 73.1 in 1994	7 64.6 in 1969	7 4.94 in 1951	7 0.16 in 1942
8 72.6 in 1988	8 64.7 in 1981	8 4.07 in 1995	8 0.19 in 1985
9 72.5 in 2022	9 64.9 in 1950	9 4.00 in 2020	9 0.20 in 2017
10 72.4 in 1958	10 65.0 in 2012	10 3.97 in 1968	0.20 in 1991
...	65.0 in 1951	...	0.20 in 1967
33 69.5 in 2023	41 69.5 in 2023	31 2.03 in 2023	51 2.03 in 2023
69.5 in 1993	69.5 in 1993		

Normal Temperature for November at GIF = 69.8°

Normal Rainfall for November at GIF = 1.45 inches

Warmest Autumns	Coollest Autumns	Wettest Autumns	Driest Autumns
1 79.2 in 2020	1 71.8 in 1976	1 21.86 in 1987	1 2.72 in 1961
2 79.1 in 2018	2 72.2 in 1968	2 20.61 in 1947	2 3.11 in 2009
3 79.0 in 1986	3 72.5 in 1962	3 20.57 in 1953	3 4.27 in 1967
4 78.7 in 2019	4 73.0 in 1963	4 20.35 in 1960	4 4.29 in 2008
5 78.4 in 1985	5 73.2 in 2006	5 18.82 in 1959	5 4.91 in 1985
6 78.0 in 2015	6 73.3 in 2008	6 18.11 in 1950	6 5.14 in 1942
7 77.2 in 1998	73.3 in 1981	7 17.84 in 2014	7 5.44 in 1978
77.2 in 1989	73.3 in 1953	8 17.59 in 2001	8 5.54 in 2006
77.2 in 1946	9 73.4 in 1943	9 17.16 in 1988	9 5.78 in 1990
77.2 in 1941	10 73.5 in 2000	10 16.36 in 2020	10 5.87 in 2015
...
27 75.8 in 2023	40 75.8 in 2023	39 10.23 in 2023	40 10.23 in 2023
75.8 in 1959	75.8 in 1959		

Normal Temperature for Autumn at GIF = 76.4°

Normal Rainfall for Autumn at GIF = 8.98 inches

BARTOW (records began in June 1892):

Warmest Novembers	Coollest Novembers	Wettest Novembers	Driest Novembers
1 76.4 in 1986	1 60.9 in 1917	1 7.40 in 1987	1 0.00 in 2016
2 75.3 in 2015	2 61.5 in 1970	2 7.36 in 2002	0.00 in 1960
3 74.5 in 1948	3 62.0 in 1910	3 6.52 in 1963	3 0.02 in 1931
4 73.6 in 2013	4 62.3 in 1901	4 6.33 in 1988	4 0.04 in 1966
73.6 in 1985	5 62.6 in 1904	5 5.97 in 1953	0.04 in 1928
6 73.5 in 1946	62.6 in 1892	6 5.80 in 1951	6 0.05 in 2012
7 73.0 in 1994	7 62.9 in 1962	7 5.18 in 2022	7 0.06 in 1950
8 72.9 in 1958	8 63.5 in 2008	8 4.75 in 1911	8 0.09 in 1923
9 72.5 in 2020	63.5 in 1912	9 4.71 in 1937	9 0.10 in 2007
72.5 in 1998	10 63.6 in 1939	10 4.68 in 2015	0.10 in 1974
...
32 69.5 in 2023	70 69.5 in 2023	62 1.64 in 2023	71 1.64 in 2023
69.5 in 1961	69.5 in 1961		

Normal Temperature for November at BARF1 = 68.3°

Normal Rainfall for November at BARF1 = 1.49 inches

Warmest Autumns	Coollest Autumns	Wettest Autumns	Driest Autumns
1 77.8 in 2020	1 71.0 in 1894	1 31.36 in 2022	1 3.71 in 1942
77.8 in 2015	2 71.1 in 1892	2 26.99 in 1894	2 4.88 in 2010
3 77.2 in 1998	3 71.4 in 1917	3 21.30 in 1947	3 5.00 in 1940
4 77.1 in 2018	4 71.8 in 1976	4 20.97 in 1917	4 5.02 in 1990
5 76.9 in 2009	5 72.1 in 1895	5 20.77 in 1922	5 5.25 in 1961
6 76.8 in 1946	6 72.3 in 1914	6 20.38 in 1959	6 5.26 in 1939
76.8 in 1919	7 72.4 in 1970	7 20.31 in 1982	7 5.29 in 1984
8 76.5 in 2019	8 72.5 in 1904	8 19.77 in 1953	8 5.47 in 1974
76.5 in 1958	9 72.8 in 1967	9 19.43 in 1902	9 5.57 in 1906
10 76.4 in 1994	72.8 in 1963	10 19.30 in 1960	10 5.90 in 1927
	72.8 in 1935
...	...	65 11.56 in 2023	64 11.56 in 2023
31 75.1 in 2023	64 75.1 in 2023		

Normal Temperature for Autumn at BARF1 = 74.8°

Normal Rainfall for Autumn at BARF1 = 11.83 inches

SARASOTA-BRADENTON AREA (records began in January 1911):

Warmest Novembers	Coollest Novembers	Wettest Novembers	Driest Novembers
1 76.1 in 1986	1 63.2 in 1917	1 9.40 in 1997	1 0.00 in 1931
2 75.4 in 2015	2 63.5 in 1949	2 7.62 in 2020	2 Trace in 1940
3 74.7 in 2020	63.5 in 1923	3 6.81 in 1920	Trace in 1928
4 73.2 in 1948	4 64.2 in 1976	4 6.24 in 1925	4 0.02 in 2016
5 73.1 in 2022	5 64.5 in 2008	5 5.68 in 1953	5 0.06 in 2001
73.1 in 1958	6 64.6 in 2014	6 5.18 in 1941	0.06 in 1991
7 72.7 in 1994	64.6 in 1981	7 5.15 in 1988	7 0.09 in 1930
8 72.4 in 1985	8 64.7 in 1968	8 4.94 in 1918	8 0.16 in 2007
9 72.2 in 2013	9 64.8 in 1933	9 4.69 in 2002	9 0.20 in 1945
10 72.1 in 1998	10 65.0 in 1962	10 4.55 in 1972	10 0.21 in 1978
72.1 in 1946			0.21 in 1950
...	
21 71.1 in 2023		75 0.67 in 2023	37 0.67 in 2023
71.1 in 1987		0.67 in 1965	0.67 in 1965

Normal Temperature for November at SRQ = 70.1°

Normal Rainfall for November at SRQ = 1.81 inches

Warmest Autumns	Coollest Autumns	Wettest Autumns	Driest Autumns
1 79.7 in 2020	1 71.3 in 1976	1 28.46 in 1953	1 3.25 in 2023
79.7 in 2019	2 72.2 in 1930	2 25.64 in 1962	2 3.64 in 2010
3 78.3 in 2016	3 72.3 in 1943	3 23.66 in 1922	3 4.01 in 1991
4 78.2 in 1986	4 72.5 in 1940	4 23.12 in 1997	4 5.08 in 1942
5 78.0 in 2015	5 72.7 in 1923	5 22.26 in 1912	5 5.44 in 1974
6 77.8 in 2018	6 73.0 in 1981	6 22.01 in 1952	6 5.61 in 2012
7 77.3 in 2007	73.0 in 1944	7 21.30 in 1988	7 5.90 in 2019
8 77.2 in 2023	73.0 in 1937	8 20.43 in 1928	8 5.95 in 1945
9 77.1 in 1998	9 73.1 in 1968	9 20.29 in 1957	9 6.05 in 1944
77.1 in 1990	73.1 in 1956	10 19.80 in 1960	10 6.27 in 1984

Normal Temperature for Autumn at SRQ = 76.5°

Normal Rainfall for Autumn at SRQ = 10.57 inches

VENICE (records began in May 1955):

Warmest Novembers	Coollest Novembers	Wettest Novembers	Driest Novembers
1 75.8 in 2015	1 64.2 in 2008	1 7.65 in 1997	1 0.00 in 1991
2 74.1 in 1985	2 64.7 in 1962	2 6.02 in 2020	2 0.02 in 2007
3 73.9 in 2022	3 64.9 in 1981	3 5.85 in 1972	3 0.04 in 2001
4 73.6 in 1998	64.9 in 1970	4 5.56 in 1983	4 0.06 in 2016
73.6 in 1994	5 65.1 in 1956	5 5.55 in 1963	5 0.15 in 1960
6 73.5 in 2020	6 65.2 in 1976	6 4.77 in 1957	6 0.20 in 1993
7 72.5 in 2013	7 65.4 in 1968	7 4.46 in 1980	7 0.30 in 1956
8 72.3 in 2003	8 65.8 in 2014	8 4.14 in 1998	8 0.31 in 1978
9 72.2 in 1978	9 66.0 in 1969	9 3.77 in 1968	9 0.32 in 2012
10 71.9 in 2011	10 66.8 in 2021	10 3.72 in 2014	0.32 in 2003
71.9 in 1982	66.8 in 1966
...		39 1.34 in 2023	31 1.34 in 2023
24 70.4 in 2023			
70.4 in 2004			

Normal Temperature for November at VNCF1 = 69.9°
 Normal Rainfall for November at VNCF1 = 1.54 inches

Warmest Autumns	Coollest Autumns	Wettest Autumns	Driest Autumns
1 78.9 in 2009	1 71.8 in 1976	1 26.44 in 1983	1 3.04 in 1961
2 78.5 in 1998	2 72.1 in 1968	2 25.83 in 1995	2 3.63 in 1981
3 78.4 in 2015	3 72.8 in 2008	3 25.14 in 2022	3 5.24 in 1978
4 78.0 in 2020	72.8 in 1956	4 21.38 in 1997	4 5.68 in 2023
5 77.8 in 2018	5 73.6 in 1974	5 20.89 in 1960	5 5.81 in 2010
77.8 in 2013	6 73.7 in 1987	6 20.27 in 1968	6 6.18 in 1964
77.8 in 1985	73.7 in 1981	7 19.23 in 1959	7 6.59 in 1984
8 77.6 in 2010	73.7 in 1962	8 18.86 in 1982	8 7.16 in 1990
9 77.3 in 1994	9 73.9 in 1977	9 18.67 in 2014	9 7.38 in 2011
10 77.0 in 2023	10 74.0 in 2006	10 18.33 in 1957	10 7.53 in 2019
77.0 in 2022			
77.0 in 2017			
77.0 in 2011			
77.0 in 2003			

Normal Temperature for Autumn at VNCF1 = 76.0°
 Normal Rainfall for Autumn at VNCF1 = 12.05 inches

MYAKKA RIVER STATE PARK (Temperature records began in March 1956
and Rainfall records began in Sep 1943):

Warmest Novembers		Coolest Novembers		Wettest Novembers		Driest Novembers	
1	75.8 in 2015	1	62.1 in 1962	1	10.19 in 1997	1	0.00 in 2001
2	75.6 in 1986	2	62.4 in 1969	2	5.55 in 2022	2	0.02 in 1950
3	73.4 in 1998	3	62.8 in 1970	3	5.13 in 1953	3	0.03 in 1991
4	73.2 in 1985	4	63.2 in 1968	4	5.04 in 1947	4	0.07 in 2016
5	72.8 in 2020	5	64.1 in 2008	5	5.01 in 1972	5	0.19 in 2012
6	72.7 in 1958	6	65.3 in 2000	6	4.87 in 1981	6	0.20 in 1944
7	72.3 in 2022	7	65.4 in 2012	7	4.76 in 2020	7	0.30 in 1996
	72.3 in 1982		65.4 in 1963	8	4.73 in 1958		0.30 in 1993
9	72.1 in 2013	9	65.6 in 2021	9	4.52 in 1963		0.30 in 1965
	72.1 in 1978	10	65.8 in 1976	10	4.45 in 2002	10	0.37 in 1945
...		
32	69.1 in 2023	28	69.1 in 2023	45	1.25 in 2023	35	1.25 in 2023
	69.1 in 1975		69.1 in 1975				

Normal Temperature for November at MKCF1 = 69.1°
Normal Rainfall for November at MKCF1 = 2.02 inches

Warmest Autumns		Coolest Autumns		Wettest Autumns		Driest Autumns	
1	78.5 in 2015	1	71.7 in 1962	1	37.20 in 2022*	1	4.57 in 1961
2	78.3 in 1998	2	72.6 in 1968	2	25.70 in 1962	2	5.85 in 1974
3	78.0 in 2019	3	72.7 in 1976	3	23.65 in 1997	3	6.07 in 2023
	78.0 in 2018	4	72.8 in 1963	4	23.43 in 1979	4	6.14 in 1991
5	77.9 in 1986	5	73.4 in 1970	5	21.95 in 2014	5	6.52 in 2008
6	77.8 in 1985		73.4 in 1969	6	21.67 in 1995	6	7.52 in 1970
7	77.7 in 1991	7	73.5 in 2008	7	21.13 in 1953	7	7.57 in 1955
8	77.5 in 2020	8	73.7 in 2000	8	20.63 in 1957	8	8.07 in 2012
9	76.8 in 2009	9	73.8 in 1992	9	20.18 in 2001	9	8.67 in 1950
	76.8 in 1990	10	73.9 in 1987	10	19.62 in 1952	10	8.75 in 1996
...		...					
28	75.2 in 2023	22	75.2 in 2023				
	75.2 in 2010		75.2 in 2010				
	75.2 in 2002		75.2 in 2002				
	75.2 in 1971		75.2 in 1971				

Normal Temperature for Autumn at MKCF1 = 75.6°
Normal Rainfall for Autumn at MKCF1 = 13.66 inches

WAUCHULA 2 N (records began in January 1933):

Warmest Novembers		Coolest Novembers		Wettest Novembers		Driest Novembers	
1	75.7 in 1986	1	61.9 in 2012	1	11.18 in 1987	1	0.02 in 1940
2	74.6 in 2015	2	62.5 in 2014	2	10.38 in 1997	2	0.03 in 1967
3	74.4 in 1948		62.5 in 1949	3	6.43 in 1953	3	0.08 in 1960
4	73.2 in 1946	4	63.2 in 1962	4	5.89 in 1963	4	0.12 in 1991
5	72.7 in 2020	5	63.4 in 1970	5	4.75 in 1972	5	0.16 in 1974
	72.7 in 1985	6	63.5 in 1956	6	4.41 in 2002	6	0.17 in 2016
7	72.7 in 1958	7	63.8 in 2000	7	4.37 in 2014	7	0.19 in 2012
8	71.9 in 2022	8	63.9 in 1969	8	3.93 in 2010	8	0.23 in 1944
9	71.7 in 1988	9	64.0 in 1950	9	3.91 in 1937	9	0.24 in 1966
10	71.4 in 1978	10	64.4 in 1954	10	3.44 in 1988		0.24 in 1956
	71.4 in 1973				...		
...		...		21	2.48 in 2023		
28	69.8 in 2023	60	69.8 in 2023		2.48 in 1951		

Normal Temperature for November at WAUF1 = 67.8°
 Normal Rainfall for November at WAUF1 = 1.96 inches

Warmest Autumns		Coolest Autumns		Wettest Autumns		Driest Autumns	
1	78.1 in 2009	1	71.6 in 2014	1	31.84 in 2022	1	2.12 in 1961
2	77.9 in 2007	2	71.7 in 2012	2	27.02 in 1953	2	3.84 in 1974
3	77.7 in 1985	3	72.0 in 1956	3	23.48 in 1947	3	4.75 in 1967
4	77.6 in 2020	4	72.1 in 1943	4	20.13 in 1975	4	4.92 in 2008
5	77.5 in 2015	5	72.2 in 1954	5	20.12 in 1952	5	5.10 in 1978
6	77.2 in 1941	6	72.5 in 2010	6	19.04 in 1987	6	5.80 in 1991
7	76.9 in 2018		72.5 in 2006	7	19.02 in 1960	7	6.09 in 1976
8	76.3 in 1946		72.5 in 1953	8	19.00 in 1997	8	6.10 in 1944
9	76.2 in 1989		72.5 in 1944	9	18.33 in 2017	9	6.32 in 1980
10	76.1 in 2019	10	72.6 in 1976	10	16.90 in 1938	10	6.58 in 2003
	76.1 in 1990			11	16.88 in 1969		
	76.1 in 1936			12	16.09 in 1936		
...				13	15.67 in 1995		
25	75.4 in 2023			14	15.64 in 2023		

Normal Temperature for Autumn at WAUF1 = 74.6°
 Normal Rainfall for Autumn at WAUF1 = 11.37 inches

ARCHBOLD BIO STN (records began in January 1969):

Warmest Novembers	Coollest Novembers	Wettest Novembers	Driest Novembers
1 76.0 in 2015	1 62.2 in 2008	1 5.94 in 1987	1 0.00 in 2016
2 75.6 in 1986	2 63.1 in 2012	2 5.16 in 1998	0.00 in 2008
3 73.7 in 2020	3 63.2 in 1970	3 4.53 in 2022	3 0.08 in 1986
4 73.3 in 2022	4 64.2 in 1969	4 4.52 in 2002	4 0.12 in 1970
5 72.4 in 1992	5 64.4 in 1981	5 4.46 in 1997	5 0.13 in 1975
6 71.7 in 1985	6 65.1 in 2014	6 4.37 in 1992	6 0.20 in 1996
7 71.6 in 1994	7 65.3 in 2006	7 4.17 in 1977	7 0.21 in 2012
8 71.3 in 1978	8 65.4 in 2000	8 4.16 in 1994	8 0.24 in 2000
71.3 in 1973	9 66.0 in 1991	9 3.80 in 1988	9 0.29 in 1973
10 71.2 in 2013	10 66.3 in 1997	10 3.78 in 2005	10 0.40 in 2006
11 70.8 in 2023			...
			25 1.19 in 2023
			1.19 in 1999

Normal Temperature for November at ACHF1 = 68.9°
 Normal Rainfall for November at ACHF1 = 1.74 inches

Warmest Autumns	Coollest Autumns	Wettest Autumns	Driest Autumns
1 78.2 in 2015	1 71.6 in 2008	1 22.87 in 2017	1 4.62 in 1996
2 78.0 in 2020	2 72.5 in 2012	2 22.49 in 1987	2 4.86 in 1990
3 77.4 in 1986	3 72.7 in 2006	3 21.60 in 2022	3 5.52 in 2006
4 76.6 in 2018	72.7 in 2000	4 20.74 in 1969	4 5.96 in 1974
5 76.3 in 2019	72.7 in 1976	5 18.09 in 2014	5 6.01 in 2018
76.3 in 1985	6 72.8 in 1997	6 17.33 in 1977	6 6.16 in 2010
7 76.2 in 2017	7 73.0 in 1981	7 17.04 in 2001	7 6.27 in 2008
8 76.0 in 2022	8 73.1 in 1970	8 16.98 in 2021	8 6.53 in 1980
9 75.8 in 2023	9 73.2 in 2014	9 16.79 in 1998	9 7.16 in 1984
75.8 in 2016	73.2 in 1984	10 16.55 in 2016	10 7.36 in 2007
75.8 in 1973	
		28 12.28 in 2023	28 12.28 in 2023

Normal Temperature for Autumn at ACHF1 = 75.1°
 Normal Rainfall for Autumn at ACHF1 = 12.32 inches

PUNTA GORDA AREA (records began in May 1914):

Warmest Novembers		Coolest Novembers		Wettest Novembers		Driest Novembers	
1	78.3 in 1948	1	63.9 in 1917	1	8.02 in 2022	1	0.00 in 1931
2	76.8 in 1986	2	64.2 in 1970	2	6.91 in 2020	2	0.02 in 2012
3	75.9 in 1946		64.2 in 1968	3	5.97 in 1916	3	0.05 in 2016
4	75.5 in 2015	4	65.1 in 2008	4	5.52 in 2002		0.05 in 1990
5	74.3 in 2022	5	65.7 in 1969	5	5.07 in 1987	5	0.07 in 2007
	74.3 in 2020	6	65.8 in 1966	6	4.60 in 2014	6	0.08 in 1940
7	74.2 in 1985	7	66.1 in 1976	7	4.54 in 1965	7	0.09 in 1993
8	74.1 in 1958		66.1 in 1923	8	4.40 in 1972	8	0.10 in 1929
9	73.8 in 1961	9	67.0 in 2012	9	4.31 in 1921	9	0.11 in 1973
10	73.6 in 1947		67.0 in 1939	10	4.16 in 1951	10	0.12 in 1924
...			67.0 in 1914	
16	72.6 in 2023			53	1.29 in 2023	55	1.29 in 2023
					1.29 in 1949		1.29 in 1949

Normal Temperature for November at PGD = 70.2°

Normal Rainfall for November at PGD = 2.12 inches

Warmest Autumns		Coolest Autumns		Wettest Autumns		Driest Autumns	
1	79.6 in 1948	1	72.4 in 1917	1	31.25 in 1959	1	5.37 in 2008
2	79.4 in 1986	2	73.0 in 1976	2	24.77 in 2022	2	5.75 in 1961
3	79.3 in 2020		73.0 in 1968	3	24.61 in 1922	3	5.87 in 1974
4	79.1 in 1946	4	73.5 in 1923	4	23.01 in 1962	4	5.91 in 1927
5	78.7 in 2018	5	73.7 in 1930	5	21.28 in 1953	5	5.95 in 1973
	78.7 in 1985	6	73.8 in 1914	6	20.82 in 1995	6	6.00 in 1931
7	78.2 in 2023	7	73.9 in 1943	7	20.64 in 1947	7	6.22 in 1991
8	78.1 in 2015		73.9 in 1940	8	20.39 in 1924	8	6.33 in 1970
	78.1 in 1947	9	74.0 in 1970	9	18.72 in 1929	9	6.62 in 1978
10	77.9 in 1960	10	74.1 in 2008	10	18.66 in 1951	10	6.82 in 1920
	77.9 in 1951		74.1 in 1969	
			74.1 in 1966	59	11.46 in 2023	48	11.46 in 2023

Normal Temperature for Autumn at PGD = 76.5°

Normal Rainfall for Autumn at PGD = 12.01 inches

FORT MYERS AREA (records began in January 1902):

Warmest Novembers	Coollest Novembers	Wettest Novembers	Driest Novembers
1 78.3 in 1986	1 64.1 in 1917	1 8.06 in 1987	1 Trace in 2016
2 76.7 in 2015	2 64.9 in 1910	2 7.58 in 1998	Trace in 2000
3 76.6 in 2022	3 65.4 in 1956	3 5.67 in 2002	Trace in 1944
4 75.6 in 1985	4 65.7 in 1949	4 4.60 in 1921	4 0.01 in 1990
75.6 in 1948	5 65.9 in 1923	5 4.47 in 2014	5 0.02 in 1950
6 75.4 in 1994	6 66.1 in 1962	6 4.21 in 2020	6 0.03 in 1945
7 75.0 in 1946	7 66.2 in 1969	7 4.11 in 1997	7 0.04 in 1978
8 74.9 in 2020	8 66.3 in 1903	8 3.85 in 1972	8 0.06 in 1905
9 74.2 in 1978	9 66.6 in 1950	9 3.75 in 2005	9 0.08 in 1942
10 74.0 in 2017	10 66.7 in 1976	10 3.71 in 1922	10 0.09 in 2008
74.0 in 1988	66.7 in 1970	...	0.09 in 2007
...		19 2.97 in 2023	0.09 in 1931
20 73.0 in 2023			
73.0 in 2019			

Normal Temperature for November at FMY = 71.5°

Total Rainfall for November 1-28, 2023 = 2.97 inches

Normal Rainfall for November at FMY = 1.78 inches

Warmest Autumns	Coollest Autumns	Wettest Autumns	Driest Autumns
1 80.4 in 1986	1 72.5 in 1903	1 32.14 in 1922	1 5.16 in 1988
2 80.2 in 1985	2 72.7 in 1910	2 27.85 in 1969	2 5.95 in 1942
3 79.8 in 2019	3 72.9 in 1976	3 26.80 in 1924	3 5.96 in 1974
4 79.3 in 2022	4 73.7 in 1908	4 23.34 in 1947	4 5.97 in 1907
5 79.1 in 2020	5 73.8 in 1913	5 23.33 in 1953	5 6.11 in 1992
79.1 in 2015	6 74.0 in 1923	6 22.99 in 1962	6 6.12 in 1906
7 78.8 in 1979	7 74.1 in 1953	7 22.36 in 2020	7 6.31 in 2004
8 78.7 in 1994	8 74.3 in 1909	8 21.74 in 1998	8 6.50 in 1966
9 78.6 in 2018	9 74.4 in 1943	9 21.44 in 1952	9 6.67 in 1978
10 78.5 in 2021	74.4 in 1914	10 20.90 in 2011	10 6.78 in 1904
78.5 in 2007	
78.5 in 1996		63 12.02 in 2023	56 12.02 in 2023
78.5 in 1990		12.02 in 1911	12.02 in 1911
14 78.4 in 2023			

Normal Temperature for Autumn at FMY = 77.2°

Normal Rainfall for Autumn at FMY = 13.86 inches

For more local climate information, please visit our web page at <https://www.weather.gov/tampabay> and look within the "Climate and Past Weather" drop down menu above the map of the area.