

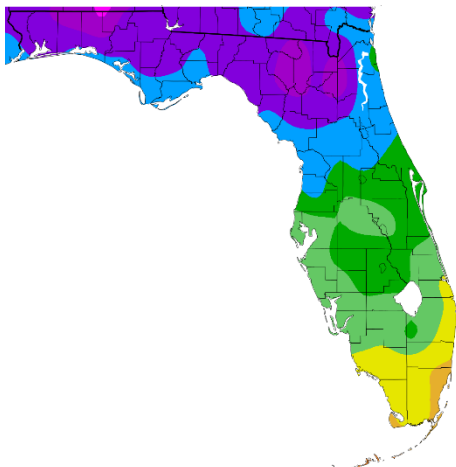
November and Autumn (Sep/Oct/Nov) 2024 Climate Summary

The first half of November was much warmer than normal, with temperatures more typical of late September. Then during the second half of the month we saw a few cold fronts move through bringing several days of much below normal temperatures. However, even with these cooler temperatures several sites ended up in the Top Ten Warmest for November with temperatures averaging 2 to 5 degrees above normal.

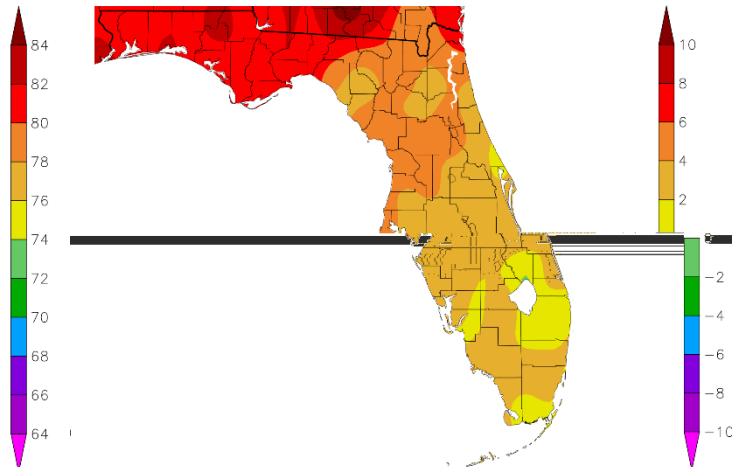
NOVEMBER TEMPERATURE (°F) :

| Location | November 2024 Rank | November 2024 Avg Temp | Normal Nov Temp | Dep fm Normal | Records Began |
|-------------------------|--------------------|------------------------|-----------------|---------------|---------------|
| Fort Myers Area | 10th Warmest (tie) | 74.0° | 71.5° | +2.5° | Jan 1902 |
| Winter Haven Area | 6th Warmest | 73.8° | 69.8° | +4.0° | Mar 1941 |
| Punta Gorda Area | 10th Warmest | 73.7° | 70.2° | +3.5° | May 1914 |
| St Petersburg Area | 9th Warmest | 73.6° | 70.6° | +3.0° | Aug 1914 |
| Tampa Area | 7th Warmest | 73.0° | 69.8° | +3.2° | Apr 1890 |
| Sarasota-Bradenton Area | 7th Warmest | 72.8° | 70.1° | +2.7° | Jan 1911 |
| Venice | 7th Warmest | 72.8° | 69.9° | +2.9° | May 1955 |
| Tarpon Springs | 6th Warmest (tie) | 72.3° | 67.5° | +4.8° | Jan 1892 |
| Plant City | 11th Warmest | 72.2° | 69.4° | +2.8° | Sep 1892 |
| Lakeland Area | 9th Warmest | 71.8° | 69.2° | +2.6° | Jan 1915 |
| Bartow | 15th Warmest (tie) | 71.3° | 68.3° | +3.0° | Jun 1892 |
| St. Leo | 13th Warmest | 71.1° | 66.8° | +4.3° | Apr 1895 |
| Wauchula | 15th Warmest (tie) | 70.6° | 67.8° | +2.8° | Jan 1933 |
| Inverness 3 SE | 4th Warmest (tie) | 69.7° | 62.7° | +5.0° | Jul 1948 |
| Brooksville Area | 21st Warmest (tie) | 68.4° | 65.1° | +3.3° | Jan 1892 |
| Chiefland 5 ESE | 5th Warmest | 67.6° | 62.7° | +4.9° | Jul 1956 |

Temperature (F)
11/1/2024 - 11/30/2024



Departure from Normal Temperature (F)
11/1/2024 - 11/30/2024



Graphics Source: NOAA Regional Climate Centers

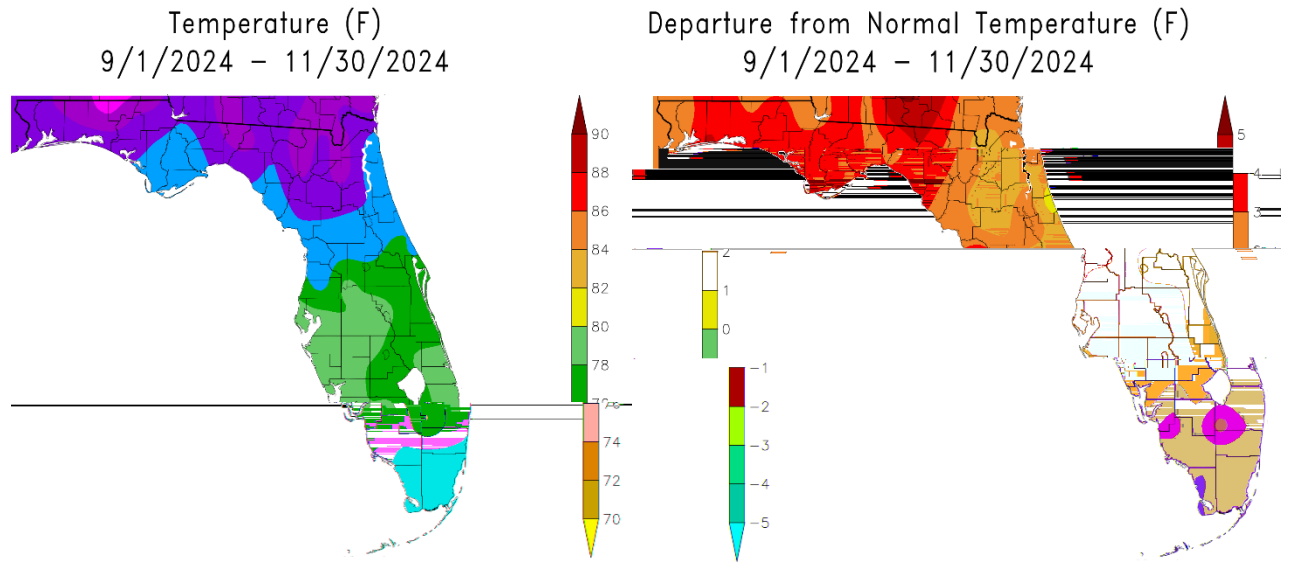
Contact: Paul Close, Paul.Close@noaa.gov

Date: 12/09/2024

As for Autumn, we had temperatures about 1 to 4 degrees above normal in September, near normal to about 2 degrees above normal in October, and 2 to 5 degrees above normal in November. Overall, this Autumn temperatures averaged about 1 to 4 degrees above normal which placed most locations in the Top Ten Warmest for Autumn.

AUTUMN (SEPTEMBER/OCTOBER/NOVEMBER) TEMPERATURE (°F) :

| Location | Autumn 2024 Rank | Avg Temp | Normal Aut Temp | Dep fm Normal | Records Began |
|-------------------------|--------------------|----------|-----------------|---------------|---------------|
| Punta Gorda Area | 2nd Warmest | 79.5° | 76.5° | +3.0° | May 1914 |
| St Petersburg Area | 4th Warmest (tie) | 79.3° | 77.0° | +2.3° | Aug 1914 |
| Fort Myers Area | 5th Warmest (tie) | 79.1° | 77.2° | +1.9° | Jan 1902 |
| Plant City | 2nd Warmest | 78.8° | 76.1° | +2.7° | Sep 1892 |
| Winter Haven Area | 5th Warmest | 78.6° | 76.4 | +2.2° | Jan 1941 |
| Venice | 4th Warmest | 78.3° | 76.0° | +2.3° | May 1955 |
| Tampa Area | 5th Warmest (tie) | 78.1° | 76.6° | +1.5° | Apr 1890 |
| Sarasota-Bradenton Area | 7th Warmest | 77.6° | 76.5° | +1.1° | Jan 1911 |
| Lakeland Area | 6th Warmest (tie) | 77.4° | 75.7° | +1.7° | Jan 1915 |
| Tarpon Springs | 5th Warmest | 77.1° | 74.8° | +2.3° | Jan 1892 |
| Wauchula | 15th Warmest (tie) | 76.9° | 74.6° | +2.3° | Jan 1933 |
| Bartow | 7th Warmest | 76.7° | 74.8° | +1.9° | Jun 1892 |
| St. Leo | 7th Warmest (tie) | 76.1° | 73.6° | +2.5° | Apr 1895 |
| Inverness 3 SE | 3rd Warmest | 75.5° | 71.9° | +3.6° | Jul 1948 |
| Brooksville Area | 16th Warmest (tie) | 74.8° | 72.7° | +2.1° | Jan 1892 |
| Chiefland 5 ESE | 7th Warmest (tie) | 73.4° | 70.9° | +2.5° | Jul 1956 |

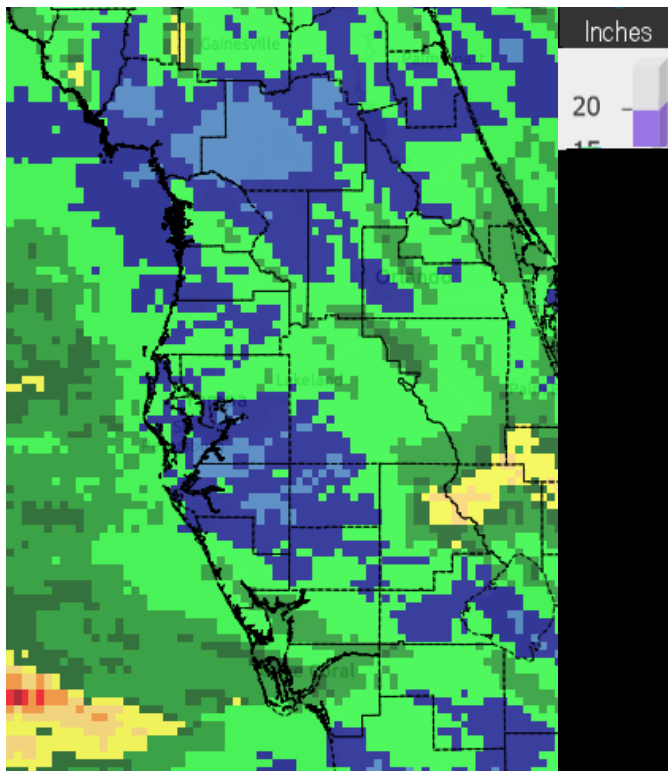


Graphics Source: NOAA Regional Climate Centers

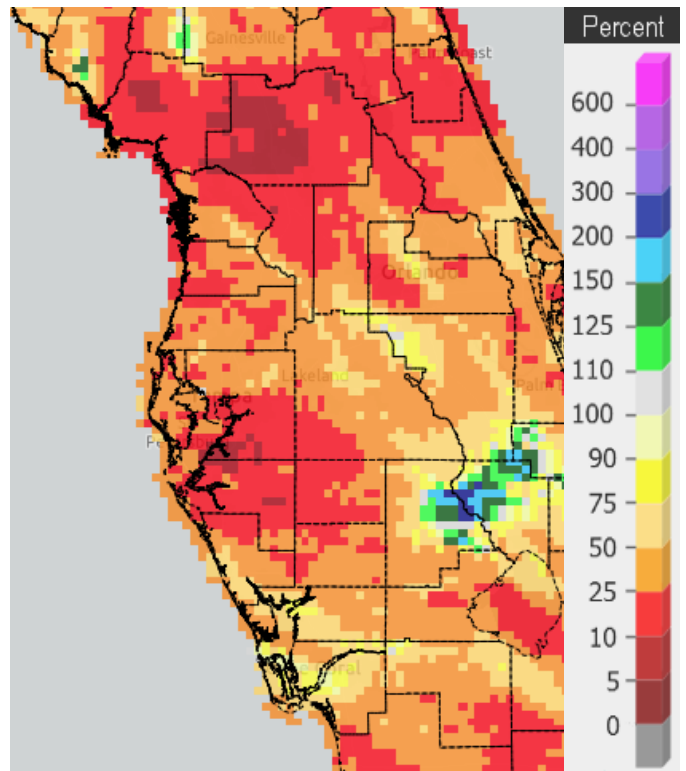
Looking at rainfall, most days in November 2024 were dry, which is not that unusual, but we did see a few fronts move through bringing some rainfall to parts of the area.

NOVEMBER RAINFALL (inches):

| Location | November 2024 Rank | November 2024 Rain Total | Normal Nov Rain | Dep fm Normal | Records Began |
|-------------------------|--------------------|--------------------------|-----------------|---------------|---------------|
| Fort Myers Area | 30th Wettest (tie) | 2.20 | 1.78 | +0.42 | Jan 1902 |
| Tampa Area | 47th Wettest (tie) | 1.94 | 1.40 | +0.54 | Apr 1890 |
| Wauchula | 44th Driest (tie) | 1.23 | 1.96 | -0.73 | Jan 1933 |
| Punta Gorda Area | 47th Driest (tie) | 1.01 | 2.12 | -1.11 | May 1914 |
| Winter Haven Area | 35th Driest | 0.97 | 1.45 | -0.48 | Jan 1941 |
| Venice | 24th Driest | 0.81 | 1.54 | -0.73 | May 1955 |
| Lakeland Area | 28th Driest (tie) | 0.56 | 1.93 | -1.37 | Jan 1915 |
| Plant City | 34th Driest | 0.50 | 1.76 | -1.26 | Sep 1892 |
| Brooksville Area | 31st Driest (tie) | 0.47 | 1.59 | -1.12 | Jan 1892 |
| Chiefland 5 ESE | 6th Driest | 0.46 | 2.22 | -1.76 | Jul 1956 |
| Bartow | 25th Driest (tie) | 0.40 | 1.49 | -1.09 | Jun 1892 |
| St. Petersburg Area | 24th Driest (tie) | 0.38 | 1.46 | -1.08 | Aug 1914 |
| Inverness 3 SE | 10th Driest | 0.37 | 1.83 | -1.46 | Jul 1948 |
| Tarpon Springs | 16th Driest | 0.25 | 1.90 | -1.65 | Jan 1892 |
| St. Leo | 7th Driest | 0.18 | 1.86 | -1.68 | Apr 1895 |
| Sarasota-Bradenton Area | 8th Driest | 0.13 | 1.81 | -1.68 | Jan 1911 |



Rainfall November 2024

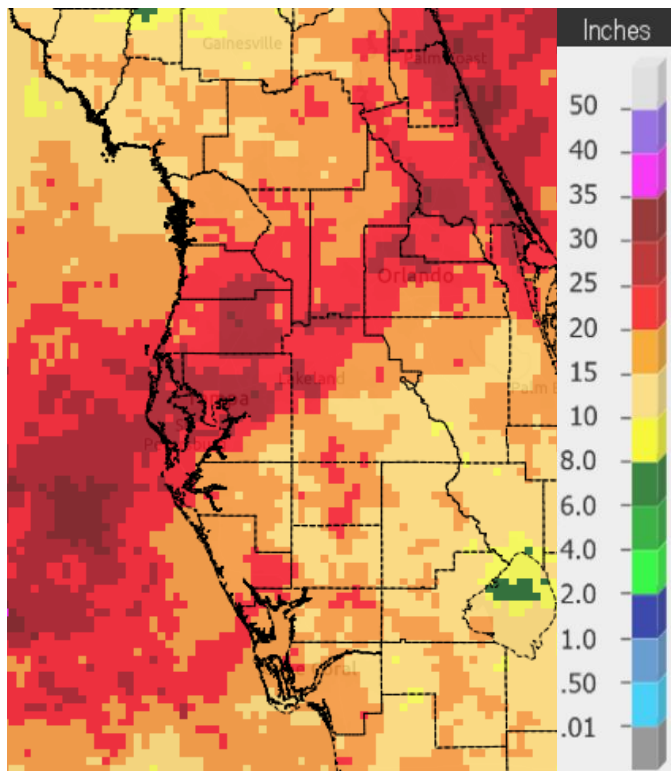


Percent of Normal

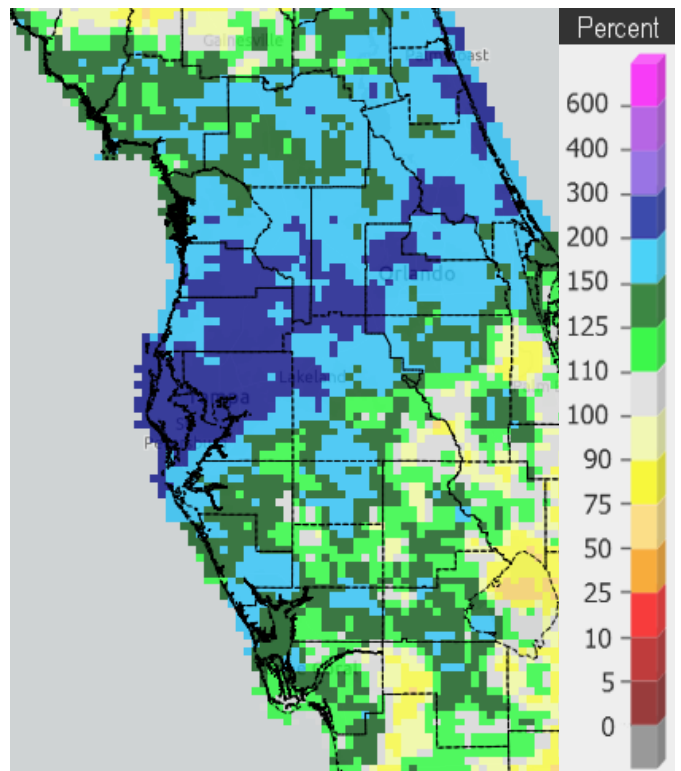
As for rainfall during Autumn it was much greater than normal in many areas thanks to the two tropical systems, Helene and especially Milton, with Tampa and Lakeland shattering the previous record for Autumn rainfall.

AUTUMN (SEPTEMBER/OCTOBER/NOVEMBER) RAINFALL (inches):

| Location | Autumn 2024 Rank | Rain Total | Normal Aut Rain | Dep fm Normal | Records Began |
|-------------------|------------------|------------|-----------------|---------------|---------------|
| Lakeland Area | 1st Wettest | 31.67 | 12.59 | +19.08 | Jan 1915 |
| Tampa Area | 1st Wettest | 29.57 | 9.83 | +19.74 | Apr 1890 |
| St. Leo | 3rd Wettest | 24.87 | 11.55 | +13.32 | Apr 1895 |
| Plant City | 2nd Wettest | 23.63 | 11.33 | +12.30 | Sep 1892 |
| Wauchula | 4th Wettest | 23.20 | 11.37 | +11.83 | Jan 1933 |
| Tarpon Springs | 4th Wettest | 22.61 | 12.12 | +10.49 | Jan 1892 |
| Fort Myers Area | 16th Wettest | 20.20 | 13.86 | +6.34 | Jan 1902 |
| Brooksville Area | 13th Wettest | 19.07 | 10.17 | +8.90 | Jan 1892 |
| Bartow | 25th Wettest | 16.61 | 11.83 | +4.78 | Jun 1892 |
| Venice | 17th Wettest | 16.26 | 12.05 | +4.21 | May 1955 |
| Inverness 3 SE | 12th Wettest | 15.83 | 10.56 | +5.27 | Jul 1948 |
| Punta Gorda Area | 38th Wettest | 13.35 | 12.01 | +1.34 | May 1914 |
| Winter Haven Area | 23rd Wettest | 12.88 | 8.98 | +3.90 | Jan 1941 |
| Chiefland 5 ESE | 22nd Wettest | 11.99 | 11.21 | +0.78 | Jul 1956 |



Rainfall Autumn 2024



Percent of Normal

On the following pages are tables of the Top Ten Warmest, Coolest, Wettest, and Driest Novembers and Autumns at some official NWS locations, which include the average/total for this November and Autumn where available, and the 1991-2020 Normal (average) temperature and rainfall for November and Autumn.

CHIEFLAND 5 SE (records began in July 1956):

| Warmest Novembers | | Coolest Novembers | | Wettest Novembers | | Driest Novembers | |
|-------------------|---------------------|-------------------|--------------|-------------------|--------------|------------------|---------------------|
| 1 | 69.4 in 1985 | 1 | 56.6 in 1976 | 1 | 7.52 in 1972 | 1 | Trace in 1978 |
| 2 | 69.2 in 1998 | 2 | 56.7 in 2008 | 2 | 6.47 in 1997 | 2 | 0.15 in 2012 |
| 3 | 68.9 in 1986 | 3 | 57.3 in 1970 | 3 | 6.02 in 1987 | 3 | 0.25 in 2016 |
| 4 | 68.6 in 1994 | 4 | 58.2 in 1962 | 4 | 5.94 in 2002 | 4 | 0.33 in 1956 |
| 5 | 67.6 in 2024 | 5 | 58.3 in 1968 | 5 | 5.25 in 1958 | 5 | 0.35 in 1970 |
| 6 | 67.5 in 1982 | 6 | 59.2 in 1969 | 6 | 4.95 in 1983 | 6 | 0.46 in 2024 |
| 7 | 66.9 in 2022 | 7 | 59.3 in 2021 | 7 | 4.80 in 1963 | 7 | 0.48 in 1998 |
| | 66.9 in 2020 | 8 | 59.4 in 2014 | 8 | 4.73 in 2013 | 8 | 0.61 in 1990 |
| | 66.9 in 1973 | 9 | 59.7 in 1984 | 9 | 4.55 in 1981 | 9 | 0.62 in 1991 |
| 10 | 66.5 in 1958 | 10 | 59.8 in 1963 | 10 | 4.50 in 1986 | 10 | 0.66 in 2001 |

Normal Temperature for November at CHIF1 = 62.7°

Normal Rainfall for November at CHIF1 = 2.22 inches

| Warmest Autumns | | Coolest Autumns | | Wettest Autumns | | Driest Autumns | |
|-----------------|---------------------|-----------------|--------------|-----------------|----------------------|----------------|--------------|
| 1 | 75.2 in 2018 | 1 | 67.1 in 1976 | 1 | 26.52 in 2004 | 1 | 2.05 in 1978 |
| 2 | 74.9 in 2020 | 2 | 67.9 in 2008 | 2 | 24.26 in 1983 | 2 | 3.83 in 2008 |
| | 74.9 in 1998 | 3 | 68.7 in 2006 | 3 | 20.54 in 1964 | 3 | 4.20 in 1961 |
| 4 | 74.2 in 1986 | 4 | 68.8 in 1968 | 4 | 18.65 in 1959 | 4 | 5.13 in 2010 |
| 5 | 73.9 in 1985 | 5 | 68.9 in 2000 | 5 | 17.59 in 1985 | 5 | 5.37 in 1970 |
| 6 | 73.7 in 1959 | 6 | 69.1 in 1963 | 6 | 16.94 in 1998 | 6 | 5.38 in 2003 |
| 7 | 73.4 in 2024 | | 69.1 in 1969 | 7 | 16.38 in 1997 | 7 | 6.11 in 2022 |
| | 73.4 in 2019 | 8 | 69.3 in 1956 | 8 | 15.91 in 1960 | 8 | 6.24 in 1991 |
| 9 | 73.0 in 1973 | | 69.3 in 1962 | 9 | 15.67 in 2002 | 9 | 6.61 in 1974 |
| 10 | 72.9 in 2016 | 10 | 69.6 in 2010 | 10 | 15.26 in 2017 | 10 | 6.65 in 2005 |
| | | | | ... | | | |
| | | | | 22 | 11.99 in 2024 | | |

Normal Temperature for Autumn at CHIF1 = 70.9°

Normal Rainfall for Autumn at CHIF1 = 11.21 inches

INVERNESS 3 SE (records began in July 1948):

| Warmest Novembers | Coollest Novembers | Wettest Novembers | Driest Novembers |
|-----------------------|--------------------|-------------------|------------------------|
| 1 73.1 in 2015 | 1 59.0 in 1991 | 1 7.73 in 1980 | 1 0.00 in 2004 |
| 2 71.0 in 2020 | 2 59.5 in 1976 | 2 6.40 in 1997 | 0.00 in 1978 |
| 3 70.3 in 1958 | 3 60.3 in 2002 | 3 6.21 in 1972 | 3 0.01 in 2016 |
| 4 69.7 in 2024 | 4 60.5 in 2014 | 4 5.48 in 1951 | 4 0.02 in 1950 |
| 69.7 in 2022 | 5 60.6 in 1997 | 5 4.90 in 2015 | 5 0.07 in 2012 |
| 6 69.3 in 1978 | 6 61.0 in 1950 | 6 4.78 in 2014 | 6 0.23 in 1993 |
| 69.3 in 1964 | 7 61.3 in 2012 | 7 4.69 in 1988 | 7 0.25 in 1967 |
| 8 68.8 in 1957 | 8 61.4 in 1995 | 8 4.35 in 2022 | 8 0.28 in 1956 |
| 9 68.6 in 1998 | 9 61.6 in 2000 | 9 3.77 in 2005 | 9 0.36 in 2001 |
| 10 68.5 in 1973 | 10 61.7 in 1949 | 10 3.70 in 2017 | 10 0.37 in 2024 |
| 68.5 in 1960 | | | |

Normal Temperature for November at INVFl = 64.3°

Normal Rainfall for November at INVFl = 1.83 inches

| Warmest Autumns | Coollest Autumns | Wettest Autumns | Driest Autumns |
|-----------------------|------------------|-------------------------|-----------------|
| 1 76.8 in 2020 | 1 68.4 in 1976 | 1 21.53 in 2017 | 1 2.08 in 1967 |
| 2 76.1 in 2015 | 2 69.4 in 1997 | 2 21.34 in 1960 | 2 2.92 in 1978 |
| 3 75.5 in 2024 | 3 70.2 in 1991 | 3 21.07 in 1950 | 3 4.19 in 1961 |
| 4 75.1 in 1958 | 4 70.4 in 2006 | 4 19.73 in 2021 | 4 4.56 in 1974 |
| 5 75.0 in 2019 | 5 70.6 in 2000 | 5 19.55 in 1992 | 5 4.97 in 2010 |
| 6 74.9 in 1998 | 6 70.7 in 1987 | 6 19.27 in 1997 | 6 5.13 in 2003 |
| 74.9 in 1960 | 7 70.8 in 2014 | 7 18.83 in 2004 | 7 5.37 in 1954 |
| 74.9 in 1959 | 8 71.1 in 1956 | 8 17.75 in 2016 | 8 5.47 in 2012 |
| 9 74.2 in 1948 | 9 71.3 in 2002 | 9 17.32 in 2001 | 9 5.85 in 2000 |
| 10 74.1 in 2009 | 10 71.5 in 1996 | 10 16.51 in 1988 | 10 6.14 in 1996 |
| 74.1 in 2007 | | 11 16.40 in 1979 | |
| | | 12 15.83 in 2024 | |

Normal Temperature for Autumn at INVFl = 71.9°

Normal Rainfall for Autumn at INVFl = 10.56 inches

BROOKSVILLE AREA (records began in January 1892):

| Warmest Novembers | Coollest Novembers | Wettest Novembers | Driest Novembers |
|------------------------|--------------------|-------------------|------------------------|
| 1 73.2 in 2015 | 1 57.5 in 1901 | 1 9.31 in 1916 | 1 0.00 in 1967 |
| 2 72.7 in 1948 | 2 60.3 in 2008 | 2 9.17 in 1987 | 2 Trace in 2016 |
| 3 72.6 in 1946 | 3 60.5 in 1892 | 3 8.30 in 1951 | Trace in 1931 |
| 4 71.0 in 2020 | 4 60.8 in 2014 | 4 7.08 in 2014 | 4 0.01 in 1978 |
| 71.0 in 1958 | 5 61.1 in 1923 | 5 6.64 in 1937 | 5 0.05 in 1928 |
| 6 70.7 in 1994 | 6 61.3 in 2000 | 6 6.56 in 1980 | 6 0.12 in 2001 |
| 7 70.5 in 1973 | 7 61.4 in 2012 | 7 6.28 in 1999 | 7 0.15 in 1913 |
| 70.5 in 1896 | 61.4 in 1917 | 8 6.14 in 1972 | 8 0.18 in 1940 |
| 9 70.1 in 1905 | 9 61.8 in 2002 | 9 5.49 in 1932 | 9 0.22 in 1956 |
| 10 69.8 in 2022 | 10 61.9 in 1962 | 10 5.14 in 1988 | 0.22 in 1924 |
| 69.8 in 1988 | | 5.14 in 1920 | 0.22 in 1900 |
| 69.8 in 1929 | | | ... |
| ... | | | 31 0.47 in 2024 |
| 21 68.4 in 2024 | | | 0.47 in 1991 |
| 68.4 in 1992 | | | |
| 68.4 in 1938 | | | |

Normal Temperature for November at BKV = 65.1°

Normal Rainfall for November at BKV = 1.59 inches

| Warmest Autumns | Coollest Autumns | Wettest Autumns | Driest Autumns |
|------------------------|------------------|-------------------------|-----------------|
| 1 76.6 in 2020 | 1 69.3 in 1892 | 1 27.84 in 1950 | 1 2.30 in 1903 |
| 2 76.0 in 1911 | 2 69.5 in 1901 | 2 24.74 in 1912 | 2 3.58 in 2008 |
| 3 75.9 in 2015 | 3 70.2 in 1920 | 3 22.68 in 1894 | 3.58 in 1978 |
| 4 75.7 in 1905 | 4 70.3 in 2008 | 4 21.62 in 1947 | 4 3.87 in 1967 |
| 5 75.4 in 1941 | 5 70.4 in 1923 | 5 21.50 in 1922 | 5 3.97 in 1909 |
| 75.4 in 1919 | 6 70.5 in 2000 | 6 21.46 in 1995 | 6 4.10 in 2010 |
| 75.4 in 1915 | 7 70.8 in 2006 | 7 21.24 in 1921 | 7 4.58 in 1940 |
| 8 75.3 in 1946 | 8 70.9 in 2014 | 8 20.56 in 1938 | 8 4.61 in 1991 |
| 75.3 in 1927 | 70.9 in 1894 | 9 20.36 in 1911 | 9 5.37 in 2015 |
| 10 75.2 in 2018 | 10 71.0 in 1953 | 10 19.88 in 1988 | 10 5.61 in 1961 |
| 75.2 in 1973 | | 11 19.71 in 1953 | |
| 12 75.1 in 1958 | | 12 19.65 in 1979 | |
| 75.1 in 1902 | | 13 19.07 in 2024 | |
| 14 75.0 in 1960 | | | |
| 15 74.9 in 2019 | | | |
| 16 74.8 in 2024 | | | |
| 74.8 in 1959 | | | |
| 74.8 in 1929 | | | |
| 74.8 in 1926 | | | |

Normal Temperature for Autumn at BKV = 72.7°

Normal Rainfall for Autumn at BKV = 10.17 inches

ST LEO (records began in April 1895):

| Warmest Novembers | | Coolest Novembers | | Wettest Novembers | | Driest Novembers | |
|-------------------|---------------------|-------------------|--------------|-------------------|---------------|------------------|---------------------|
| 1 | 75.1 in 1986 | 1 | 60.8 in 1917 | 1 | 12.48 in 1988 | 1 | Trace in 1960 |
| 2 | 73.6 in 1985 | 2 | 61.3 in 1901 | 2 | 8.34 in 1951 | 2 | 0.02 in 1978 |
| 3 | 73.2 in 1946 | 3 | 61.7 in 1910 | 3 | 7.36 in 1987 | 3 | 0.03 in 1931 |
| 4 | 73.1 in 1948 | 4 | 62.2 in 1930 | 4 | 7.21 in 2014 | | 0.03 in 1928 |
| 5 | 72.0 in 1998 | 5 | 62.3 in 2014 | 5 | 6.72 in 2022 | 5 | 0.06 in 2016 |
| 6 | 71.8 in 2015 | 6 | 62.5 in 1923 | 6 | 6.22 in 1916 | 6 | 0.08 in 2012 |
| | 71.8 in 1994 | 7 | 62.6 in 1970 | 7 | 6.12 in 1963 | 7 | 0.18 in 2024 |
| 8 | 71.5 in 1982 | 8 | 62.8 in 1933 | 8 | 6.06 in 1972 | 8 | 0.21 in 1993 |
| 9 | 71.4 in 1958 | | 62.8 in 1932 | 9 | 5.84 in 1911 | 9 | 0.22 in 1940 |
| 10 | 71.3 in 2020 | | 62.8 in 1904 | 10 | 5.61 in 1918 | 10 | 0.23 in 1913 |
| | 71.3 in 1978 | | | | | | |
| 12 | 71.2 in 2003 | | | | | | |
| 13 | 71.1 in 2024 | | | | | | |

Normal Temperature for November at STLf1 = 66.8°
 Normal Rainfall for November at STLf1 = 1.86 inches

| Warmest Autumns | | Coolest Autumns | | Wettest Autumns | | Driest Autumns | |
|-----------------|---------------------|-----------------|--------------|-----------------|----------------------|----------------|--------------|
| 1 | 77.9 in 1985 | 1 | 69.8 in 1917 | 1 | 25.80 in 1988 | 1 | 1.52 in 1978 |
| 2 | 77.4 in 1986 | 2 | 70.1 in 1903 | 2 | 25.13 in 1912 | 2 | 3.19 in 1940 |
| 3 | 76.5 in 2020 | 3 | 70.2 in 1930 | 3 | 24.87 in 2024 | 3 | 3.56 in 2010 |
| | 76.5 in 1998 | 4 | 70.7 in 1920 | 4 | 24.60 in 1922 | 4 | 3.81 in 1909 |
| 5 | 76.4 in 2007 | 5 | 71.0 in 1976 | 5 | 22.73 in 1953 | 5 | 4.14 in 1967 |
| 6 | 76.2 in 1946 | | 71.0 in 1923 | 6 | 21.77 in 1997 | 6 | 4.76 in 1991 |
| 7 | 76.1 in 2024 | 7 | 71.1 in 1910 | 7 | 21.48 in 1982 | 7 | 5.09 in 2008 |
| | 76.1 in 2009 | 8 | 71.4 in 1943 | 8 | 21.40 in 1950 | 8 | 5.11 in 2018 |
| | 76.1 in 1941 | 9 | 71.5 in 2014 | 9 | 21.29 in 1921 | 9 | 5.33 in 1931 |
| 10 | 75.9 in 2004 | 10 | 71.8 in 1956 | 10 | 20.71 in 1949 | 10 | 5.63 in 1961 |
| | | | 71.8 in 1922 | | | | |

Normal Temperature for Autumn at STLf1= 73.6°
 Normal Rainfall for Autumn at STLf1 = 11.55 inches

TARPON SPRINGS (records began in January 1892):

| Warmest Novembers | Coollest Novembers | Wettest Novembers | Driest Novembers |
|-----------------------|--------------------|-------------------|------------------------|
| 1 75.9 in 1986 | 1 59.6 in 2004 | 1 9.13 in 1988 | 1 0.00 in 2016 |
| 2 74.4 in 1985 | 2 60.0 in 1901 | 2 8.18 in 1916 | 2 Trace in 1939 |
| 3 74.3 in 1946 | 3 61.5 in 1917 | 3 6.99 in 1997 | Trace in 1931 |
| 4 73.5 in 2015 | 4 61.7 in 1962 | 4 6.63 in 1992 | 4 0.02 in 1978 |
| 5 72.6 in 1994 | 61.7 in 1892 | 5 6.09 in 2014 | 5 0.06 in 1933 |
| 6 72.3 in 2024 | 6 61.9 in 1910 | 6 5.80 in 1963 | 6 0.08 in 1942 |
| 72.3 in 1998 | 7 62.5 in 1904 | 7 5.57 in 1920 | 7 0.09 in 1940 |
| 8 71.8 in 2003 | 8 62.6 in 2014 | 8 5.49 in 2020 | 0.09 in 1928 |
| 9 71.6 in 1896 | 62.6 in 1970 | 9 5.19 in 1955 | 9 0.10 in 1930 |
| 10 71.4 in 1982 | 10 63.0 in 1976 | 10 5.18 in 1896 | 10 0.13 in 1924 |
| | 63.0 in 1912 | | 11 0.17 in 2007 |
| | | | 12 0.19 in 1964 |
| | | | 13 0.21 in 1905 |
| | | | 14 0.22 in 1945 |
| | | | 15 0.23 in 1909 |
| | | | 16 0.25 in 2024 |

Normal Temperature for November at TRPF1 = 67.5°

Normal Rainfall for November at TRPF1 = 1.90 inches

| Warmest Autumns | Coollest Autumns | Wettest Autumns | Driest Autumns |
|-----------------------|------------------|------------------------|-----------------|
| 1 78.1 in 1985 | 1 70.8 in 1917 | 1 28.87 in 1911 | 1 1.85 in 2005 |
| 2 78.0 in 1986 | 70.8 in 1892 | 2 28.34 in 1988 | 2 3.33 in 1978 |
| 3 77.9 in 1919 | 3 71.4 in 1903 | 3 24.31 in 2014 | 3 3.44 in 1967 |
| 4 77.6 in 2018 | 4 71.5 in 1976 | 4 22.61 in 2024 | 4 4.03 in 2023 |
| 5 77.1 in 2024 | 5 71.7 in 1967 | 5 22.25 in 1997 | 5 4.62 in 2008 |
| 6 76.8 in 2020 | 71.7 in 1901 | 6 21.71 in 1983 | 6 4.85 in 2010 |
| 76.8 in 1946 | 7 71.9 in 1963 | 7 21.70 in 1912 | 7 4.86 in 1927 |
| 8 76.7 in 2015 | 71.9 in 1962 | 8 21.43 in 1975 | 8 5.57 in 1909 |
| 76.7 in 1994 | 71.9 in 1940 | 9 20.78 in 1995 | 9 5.74 in 1930 |
| 10 76.6 in 2019 | 71.9 in 1904 | 20.78 in 1959 | 10 5.99 in 1981 |
| 76.6 in 1998 | 71.9 in 1899 | | |

Normal Temperature for Autumn at TRPF1 = 74.8°

Normal Rainfall for Autumn at TRPF1 = 12.12 inches

TAMPA AREA (records began in April 1890):

| Warmest Novembers | Coollest Novembers | Wettest Novembers | Driest Novembers |
|-----------------------|--------------------|------------------------|------------------------|
| 1 76.3 in 1986 | 1 61.4 in 1901 | 1 6.12 in 1963 | 1 Trace in 1960 |
| 2 76.2 in 2015 | 2 61.9 in 1970 | 2 5.97 in 1988 | 2 0.01 in 2016 |
| 3 74.6 in 2020 | 3 62.3 in 1968 | 3 5.40 in 2020 | 0.01 in 1978 |
| 4 73.7 in 1946 | 4 62.5 in 1962 | 4 5.38 in 1944 | 4 0.04 in 1931 |
| 5 73.6 in 1948 | 5 62.8 in 1976 | 5 5.26 in 2014 | 5 0.05 in 1928 |
| 73.6 in 1985 | 6 62.9 in 1969 | 6 5.18 in 2022 | 6 0.08 in 1927 |
| 7 73.0 in 2024 | 62.9 in 1917 | 7 4.89 in 1953 | 7 0.10 in 2001 |
| 8 72.7 in 1958 | 8 63.3 in 1910 | 8 4.85 in 1925 | 0.10 in 1942 |
| 9 72.6 in 2022 | 9 63.4 in 1923 | 9 4.75 in 1941 | 9 0.11 in 2007 |
| 10 72.5 in 1998 | 10 63.7 in 1949 | 10 4.36 in 1987 | 10 0.12 in 2017 |
| | | | 0.12 in 1974 |
| | | ... | ... |
| | | 47 1.94 in 2024 | 88 1.94 in 2024 |
| | | 1.94 in 1910 | 1.94 in 1910 |

Normal Temperature for November at TPA = 69.8°

Normal Rainfall for November at TPA = 1.40 inches

| Warmest Autumns | Coollest Autumns | Wettest Autumns | Driest Autumns |
|-----------------------|------------------|------------------------|-----------------|
| 1 79.7 in 2020 | 1 71.0 in 1976 | 1 29.57 in 2024 | 1 3.19 in 2010 |
| 2 79.0 in 2015 | 2 71.6 in 1903 | 2 24.38 in 1894 | 2 3.30 in 1909 |
| 3 78.9 in 2018 | 71.6 in 1891 | 3 22.83 in 1912 | 3 3.62 in 1961 |
| 4 78.4 in 1986 | 4 71.7 in 1968 | 4 20.45 in 1997 | 4 4.06 in 1942 |
| 5 78.1 in 2024 | 5 71.8 in 1917 | 5 19.80 in 1922 | 5 4.21 in 1940 |
| 78.1 in 2019 | 71.8 in 1901 | 6 19.62 in 1988 | 6 4.25 in 1913 |
| 7 77.9 in 2017 | 7 71.9 in 1923 | 7 19.07 in 1947 | 7 4.35 in 1974 |
| 8 77.8 in 1985 | 8 72.2 in 1892 | 8 18.57 in 2022 | 8 5.07 in 1967 |
| 9 77.7 in 2016 | 9 72.3 in 1962 | 9 18.15 in 1953 | 9 5.22 in 1984 |
| 10 77.5 in 1919 | 10 72.4 in 1956 | 10 17.60 in 1890 | 10 5.33 in 2003 |
| | 72.4 in 1910 | | |

Normal Temperature for Autumn at TPA = 76.6°

Normal Rainfall for Autumn at TPA = 9.83 inches

ST PETERSBURG (records began in August 1914):

| Warmest Novembers | | Coolest Novembers | | Wettest Novembers | | Driest Novembers | |
|-------------------|---------------------|-------------------|--------------|-------------------|--------------|------------------|---------------------|
| 1 | 77.4 in 1986 | 1 | 63.9 in 1917 | 1 | 6.94 in 1988 | 1 | 0.00 in 1931 |
| 2 | 76.3 in 1985 | 2 | 64.3 in 1962 | 2 | 6.85 in 1953 | 2 | 0.02 in 1960 |
| 3 | 74.9 in 2015 | 3 | 64.7 in 1949 | 3 | 6.80 in 1987 | 3 | 0.03 in 2016 |
| 4 | 74.8 in 1946 | 4 | 65.1 in 1976 | 4 | 6.18 in 2020 | | 0.03 in 1942 |
| 5 | 74.5 in 1948 | 5 | 65.2 in 1995 | 5 | 6.04 in 1963 | 5 | 0.04 in 2001 |
| 6 | 74.3 in 2020 | | 65.2 in 1951 | 6 | 5.71 in 1916 | 6 | 0.10 in 1978 |
| 7 | 73.8 in 2005 | 7 | 65.3 in 1950 | 7 | 5.63 in 1925 | 7 | 0.12 in 1974 |
| 8 | 73.7 in 1978 | 8 | 65.4 in 1954 | 8 | 5.08 in 1954 | 8 | 0.14 in 1930 |
| 9 | 73.6 in 2024 | 9 | 65.7 in 1956 | 9 | 5.03 in 1968 | 9 | 0.15 in 1928 |
| 10 | 73.5 in 1958 | | 65.7 in 1923 | 10 | 5.02 in 1915 | 10 | 0.18 in 1946 |
| | | | | | | ... | |
| | | | | | | 24 | 0.38 in 2024 |
| | | | | | | | 0.38 in 1940 |
| | | | | | | | 0.38 in 1927 |

Normal Temperature for November at SPG = 70.6°

Normal Rainfall for November at SPG = 1.46 inches

| Warmest Autumns | | Coolest Autumns | | Wettest Autumns | | Driest Autumns | |
|-----------------|---------------------|-----------------|--------------|-----------------|---------------|----------------|--------------|
| 1 | 80.0 in 1985 | 1 | 72.6 in 1917 | 1 | 32.75 in 1988 | 1 | 2.13 in 2010 |
| 2 | 79.9 in 1986 | 2 | 73.2 in 1956 | 2 | 30.04 in 1953 | 2 | 4.00 in 1990 |
| 3 | 79.8 in 2005 | 3 | 73.4 in 1952 | 3 | 26.31 in 1986 | 3 | 4.49 in 1967 |
| 4 | 79.3 in 2024 | 4 | 73.5 in 1954 | 4 | 26.30 in 1952 | 4 | 4.69 in 2008 |
| | 79.3 in 2020 | | 73.5 in 1953 | 5 | 21.83 in 1997 | 5 | 4.84 in 1964 |
| 6 | 79.1 in 2015 | 6 | 73.6 in 1976 | 6 | 21.06 in 1922 | 6 | 5.01 in 1940 |
| 7 | 79.0 in 2018 | | 73.6 in 1962 | 7 | 20.14 in 1954 | 7 | 5.52 in 1927 |
| 8 | 78.9 in 2019 | | 73.6 in 1923 | 8 | 19.12 in 1918 | 8 | 5.61 in 1966 |
| 9 | 78.4 in 2013 | 9 | 73.7 in 1943 | 9 | 19.07 in 2001 | 9 | 5.73 in 1965 |
| | 78.4 in 1941 | 10 | 73.9 in 1950 | 10 | 18.52 in 1959 | 10 | 5.82 in 2023 |

Normal Temperature for Autumn at SPG = 77.0°

Total Rainfall for Autumn 2024 = *21.77 inches

Normal Rainfall for Autumn at SPG = 10.28 inches

* Rainfall missing on several days in September

PLANT CITY (records began in September 1892):

| Warmest Novembers | Coollest Novembers | Wettest Novembers | Driest Novembers |
|------------------------|--------------------|-------------------|------------------------|
| 1 75.7 in 1986 | 1 61.8 in 1932 | 1 7.88 in 1953 | 1 0.00 in 1960 |
| 2 74.6 in 2015 | 2 62.0 in 1930 | 2 7.34 in 1988 | 0.00 in 1931 |
| 3 74.3 in 1948 | 3 62.1 in 1917 | 3 6.89 in 2020 | 0.00 in 1905 |
| 4 74.2 in 2020 | 4 62.4 in 1933 | 4 6.75 in 2014 | 4 0.01 in 2007 |
| 5 73.9 in 1946 | 5 62.6 in 1904 | 5 6.46 in 1963 | 5 0.05 in 2012 |
| 6 73.8 in 2022 | 6 62.9 in 1912 | 6 5.90 in 1918 | 6 0.10 in 1928 |
| 7 72.7 in 1985 | 7 63.1 in 2014 | 7 5.56 in 1971 | 0.10 in 1924 |
| 8 72.5 in 1896 | 8 63.3 in 1962 | 8 4.89 in 2022 | 8 0.13 in 1940 |
| 9 72.3 in 1994 | 63.3 in 1949 | 9 4.63 in 1980 | 9 0.15 in 2017 |
| 72.3 in 1958 | 10 63.4 in 1926 | 10 4.52 in 1987 | 0.15 in 1978 |
| 11 72.2 in 2024 | | | ... |
| | | | 34 0.50 in 2024 |

Normal Temperature for November at PLCF1 = 69.4°
Normal Rainfall for November at PLCF1 = 1.76 inches

| Warmest Autumns | Coollest Autumns | Wettest Autumns | Driest Autumns |
|-----------------------|------------------|------------------------|-----------------|
| 1 79.6 in 2020 | 1 70.4 in 1930 | 1 25.05 in 1947 | 1 1.89 in 1909 |
| 2 78.8 in 2024 | 2 70.8 in 1932 | 2 23.63 in 2024 | 2 1.99 in 1961 |
| 3 78.4 in 2018 | 3 71.2 in 1940 | 3 23.20 in 1894 | 3 3.56 in 1940 |
| 4 78.3 in 2019 | 4 71.5 in 2000 | 4 23.04 in 1988 | 4 4.08 in 1991 |
| 5 77.9 in 1986 | 5 71.6 in 1976 | 5 21.72 in 1953 | 5 4.29 in 1927 |
| 6 77.4 in 2015 | 6 71.7 in 1943 | 6 20.54 in 2020 | 6 4.41 in 1990 |
| 7 77.2 in 2022 | 7 72.0 in 1937 | 7 20.48 in 2022 | 7 4.55 in 2010 |
| 77.2 in 1985 | 72.0 in 1909 | 8 20.36 in 2014 | 8 4.57 in 1939 |
| 9 76.8 in 2023 | 9 72.2 in 1968 | 9 20.15 in 2004 | 9 4.63 in 1967 |
| 10 76.4 in 1946 | 10 72.4 in 1926 | 10 20.06 in 1998 | 10 4.67 in 2008 |

Normal Temperature for Autumn at PLCF1 = 76.1°
Normal Rainfall for Autumn at PLCF1 = 11.33 inches

LAKELAND AREA (records began in January 1915):

| Warmest Novembers | | Coolest Novembers | | Wettest Novembers | | Driest Novembers | |
|-------------------|---------------------|-------------------|--------------|-------------------|--------------|------------------|---------------------|
| 1 | 76.9 in 1986 | 1 | 62.6 in 1970 | 1 | 7.56 in 2014 | 1 | 0.00 in 1924 |
| 2 | 75.4 in 2015 | 2 | 62.9 in 1962 | 2 | 7.19 in 1988 | 2 | Trace in 2016 |
| 3 | 73.4 in 1985 | 3 | 63.0 in 1969 | 3 | 6.08 in 1987 | | Trace in 1960 |
| 4 | 73.3 in 1994 | 4 | 63.4 in 1949 | 4 | 5.94 in 1941 | | Trace in 1917 |
| | 73.3 in 1948 | 5 | 63.5 in 1976 | 5 | 5.80 in 2020 | 5 | 0.03 in 1931 |
| 6 | 73.1 in 1946 | | 63.5 in 1951 | 6 | 5.71 in 1963 | 6 | 0.05 in 1928 |
| 7 | 73.0 in 2020 | | 63.5 in 1950 | 7 | 5.54 in 1980 | 7 | 0.07 in 1950 |
| 8 | 72.6 in 2022 | 8 | 63.7 in 1968 | 8 | 5.37 in 1953 | 8 | 0.08 in 2012 |
| 9 | 71.8 in 2024 | 9 | 63.9 in 2008 | 9 | 4.59 in 2018 | 9 | 0.10 in 1991 |
| 10 | 71.6 in 2003 | 10 | 64.0 in 1923 | 10 | 4.48 in 1997 | 10 | 0.11 in 1940 |
| | 71.6 in 1988 | | | | | ... | |
| | | | | | | 28 | 0.56 in 2024 |
| | | | | | | | 0.56 in 1965 |

Normal Temperature for November at LLDF1 = 69.2°

Normal Rainfall for November at LLDF1 = 1.93 inches

| Warmest Autumns | | Coolest Autumns | | Wettest Autumns | | Driest Autumns | |
|-----------------|---------------------|-----------------|--------------|-----------------|----------------------|----------------|--------------|
| 1 | 79.2 in 1986 | 1 | 71.5 in 1976 | 1 | 31.67 in 2024 | 1 | 2.99 in 1961 |
| 2 | 78.6 in 2020 | 2 | 72.1 in 1943 | 2 | 22.45 in 2014 | 2 | 3.21 in 1940 |
| 3 | 78.3 in 2015 | 3 | 72.2 in 1923 | 3 | 21.46 in 2004 | 3 | 4.16 in 1942 |
| 4 | 78.1 in 1985 | 4 | 72.3 in 2006 | 4 | 19.78 in 1947 | 4 | 4.25 in 1927 |
| 5 | 78.0 in 2018 | | 72.3 in 1968 | 5 | 19.52 in 1918 | 5 | 4.28 in 1934 |
| 6 | 77.4 in 2024 | | 72.3 in 1956 | 6 | 18.91 in 2022 | 6 | 4.58 in 2010 |
| | 77.4 in 2019 | 7 | 72.4 in 1967 | 7 | 18.47 in 1998 | 7 | 4.69 in 2008 |
| 8 | 77.0 in 1994 | 8 | 72.5 in 1940 | 8 | 18.39 in 1929 | 8 | 5.01 in 1967 |
| 9 | 76.8 in 2009 | 9 | 72.6 in 1954 | 9 | 18.29 in 1953 | 9 | 5.12 in 1978 |
| 10 | 76.7 in 1990 | 10 | 72.7 in 1962 | 10 | 17.36 in 1997 | 10 | 5.35 in 1974 |
| | | | 72.7 in 1953 | | | | |
| | | | 72.7 in 1924 | | | | |

Normal Temperature for Autumn at LLDF1 = 75.7°

Normal Rainfall for Autumn at LLDF1 = 12.59 inches

WINTER HAVEN AREA (records began in January 1941):

| Warmest Novembers | Coollest Novembers | Wettest Novembers | Driest Novembers |
|-----------------------|--------------------|------------------------|------------------------|
| 1 76.8 in 1986 | 1 63.1 in 1962 | 1 7.81 in 1988 | 1 0.00 in 1960 |
| 2 75.6 in 1948 | 2 63.2 in 1970 | 2 7.13 in 1987 | 0.00 in 1950 |
| 3 75.1 in 2015 | 3 63.9 in 2008 | 3 6.76 in 1953 | 3 Trace in 2011 |
| 4 74.9 in 1985 | 63.9 in 1968 | 4 6.27 in 1963 | 4 0.01 in 2012 |
| 5 74.5 in 1946 | 5 64.1 in 1976 | 5 5.32 in 1994 | 5 0.07 in 2016 |
| 6 73.8 in 2024 | 6 64.5 in 1949 | 6 5.21 in 1980 | 6 0.13 in 1966 |
| 7 73.5 in 2020 | 7 64.6 in 1969 | 7 4.94 in 1951 | 7 0.16 in 1942 |
| 8 73.1 in 1994 | 8 64.7 in 1981 | 8 4.07 in 1995 | 8 0.19 in 1985 |
| 9 72.6 in 1988 | 9 64.9 in 1950 | 9 4.00 in 2020 | 9 0.20 in 2017 |
| 10 72.5 in 2022 | 10 65.0 in 2012 | 10 3.97 in 1968 | 0.20 in 1991 |
| | 65.0 in 1951 | | 0.20 in 1967 |
| | | ... | ... |
| | | 48 0.97 in 2024 | 35 0.97 in 2024 |

Normal Temperature for November at GIF = 69.8°

Normal Rainfall for November at GIF = 1.45 inches

| Warmest Autumns | Coollest Autumns | Wettest Autumns | Driest Autumns |
|-----------------------|------------------|-------------------------|-----------------|
| 1 79.2 in 2020 | 1 71.8 in 1976 | 1 21.86 in 1987 | 1 2.72 in 1961 |
| 2 79.1 in 2018 | 2 72.2 in 1968 | 2 20.61 in 1947 | 2 3.11 in 2009 |
| 3 79.0 in 1986 | 3 72.5 in 1962 | 3 20.57 in 1953 | 3 4.27 in 1967 |
| 4 78.7 in 2019 | 4 73.0 in 1963 | 4 20.35 in 1960 | 4 4.29 in 2008 |
| 5 78.6 in 2024 | 5 73.2 in 2006 | 5 18.82 in 1959 | 5 4.91 in 1985 |
| 6 78.4 in 1985 | 6 73.3 in 2008 | 6 18.11 in 1950 | 6 5.14 in 1942 |
| 7 78.0 in 2015 | 73.3 in 1981 | 7 17.84 in 2014 | 7 5.44 in 1978 |
| 8 77.2 in 1998 | 73.3 in 1953 | 8 17.59 in 2001 | 8 5.54 in 2006 |
| 77.2 in 1989 | 9 73.4 in 1943 | 9 17.16 in 1988 | 9 5.78 in 1990 |
| 77.2 in 1946 | 10 73.5 in 2000 | 10 16.36 in 2020 | 10 5.87 in 2015 |
| 77.2 in 1941 | | ... | |
| | | 23 12.88 in 2024 | |

Normal Temperature for Autumn at GIF = 76.4°

Normal Rainfall for Autumn at GIF = 8.98 inches

BARTOW (records began in June 1892):

| Warmest Novembers | Coollest Novembers | Wettest Novembers | Driest Novembers |
|------------------------|--------------------|-------------------|------------------------|
| 1 76.4 in 1986 | 1 60.9 in 1917 | 1 7.40 in 1987 | 1 0.00 in 2016 |
| 2 75.3 in 2015 | 2 61.5 in 1970 | 2 7.36 in 2002 | 0.00 in 1960 |
| 3 74.5 in 1948 | 3 62.0 in 1910 | 3 6.52 in 1963 | 3 0.02 in 1931 |
| 4 73.6 in 2013 | 4 62.3 in 1901 | 4 6.33 in 1988 | 4 0.04 in 1966 |
| 73.6 in 1985 | 5 62.6 in 1904 | 5 5.97 in 1953 | 0.04 in 1928 |
| 6 73.5 in 1946 | 62.6 in 1892 | 6 5.80 in 1951 | 6 0.05 in 2012 |
| 7 73.0 in 1994 | 7 62.9 in 1962 | 7 5.18 in 2022 | 7 0.06 in 1950 |
| 8 72.9 in 1958 | 8 63.5 in 2008 | 8 4.75 in 1911 | 8 0.09 in 1923 |
| 9 72.5 in 2020 | 63.5 in 1912 | 9 4.71 in 1937 | 9 0.10 in 2007 |
| 72.5 in 1998 | 10 63.6 in 1939 | 10 4.68 in 2015 | 0.10 in 1974 |
| ... | | | ... |
| 15 71.3 in 2024 | | | 25 0.40 in 2024 |
| 71.3 in 1978 | | | 0.40 in 1978 |

Normal Temperature for November at BARF1 = 68.3°
Normal Rainfall for November at BARF1 = 1.49 inches

| Warmest Autumns | Coollest Autumns | Wettest Autumns | Driest Autumns |
|-----------------------|------------------|-------------------------|-----------------|
| 1 77.8 in 2020 | 1 71.0 in 1894 | 1 31.36 in 2022 | 1 3.71 in 1942 |
| 77.8 in 2015 | 2 71.1 in 1892 | 2 26.99 in 1894 | 2 4.88 in 2010 |
| 3 77.2 in 1998 | 3 71.4 in 1917 | 3 21.30 in 1947 | 3 5.00 in 1940 |
| 4 77.1 in 2018 | 4 71.8 in 1976 | 4 20.97 in 1917 | 4 5.02 in 1990 |
| 5 76.8 in 2009 | 5 72.1 in 1895 | 5 20.77 in 1922 | 5 5.25 in 1961 |
| 76.8 in 1946 | 6 72.3 in 1914 | 6 20.38 in 1959 | 6 5.26 in 1939 |
| 7 76.7 in 2024 | 7 72.4 in 1970 | 7 20.31 in 1982 | 7 5.29 in 1984 |
| 8 76.6 in 1919 | 8 72.5 in 1904 | 8 19.77 in 1953 | 8 5.47 in 1974 |
| 9 76.5 in 2019 | 9 72.8 in 1967 | 9 19.43 in 1902 | 9 5.57 in 1906 |
| 10 76.4 in 1994 | 72.8 in 1963 | 10 19.30 in 1960 | 10 5.90 in 1927 |
| 76.4 in 1958 | 72.8 in 1935 | ... | |
| | | 25 16.61 in 2024 | |

Normal Temperature for Autumn at BARF1 = 74.8°
Normal Rainfall for Autumn at BARF1 = 11.83 inches

SARASOTA-BRADENTON AREA (records began in January 1911):

| Warmest Novembers | | Coolest Novembers | | Wettest Novembers | | Driest Novembers | |
|-------------------|---------------------|-------------------|--------------|-------------------|--------------|------------------|---------------------|
| 1 | 76.1 in 1986 | 1 | 63.2 in 1917 | 1 | 9.40 in 1997 | 1 | 0.00 in 1931 |
| 2 | 75.4 in 2015 | 2 | 63.5 in 1949 | 2 | 7.62 in 2020 | 2 | Trace in 1940 |
| 3 | 74.7 in 2020 | | 63.5 in 1923 | 3 | 6.81 in 1920 | | Trace in 1928 |
| 4 | 73.2 in 1948 | 4 | 64.2 in 1976 | 4 | 6.24 in 1925 | 4 | 0.02 in 2016 |
| 5 | 73.1 in 2022 | 5 | 64.5 in 2008 | 5 | 5.68 in 1953 | 5 | 0.06 in 2001 |
| | 73.1 in 1958 | 6 | 64.6 in 2014 | 6 | 5.18 in 1941 | | 0.06 in 1991 |
| 7 | 72.8 in 2024 | | 64.6 in 1981 | 7 | 5.15 in 1988 | 7 | 0.09 in 1930 |
| 8 | 72.7 in 1994 | 8 | 64.7 in 1968 | 8 | 4.94 in 1918 | 8 | 0.13 in 2024 |
| 9 | 72.4 in 1985 | 9 | 64.8 in 1933 | 9 | 4.69 in 2002 | 9 | 0.16 in 2007 |
| 10 | 72.2 in 2013 | 10 | 65.0 in 1962 | 10 | 4.55 in 1972 | 10 | 0.20 in 1945 |

Normal Temperature for November at SRQ = 70.1°

Normal Rainfall for November at SRQ = 1.81 inches

| Warmest Autumns | | Coolest Autumns | | Wettest Autumns | | Driest Autumns | |
|-----------------|---------------------|-----------------|--------------|-----------------|---------------|----------------|--------------|
| 1 | 79.7 in 2020 | 1 | 71.3 in 1976 | 1 | 28.46 in 1953 | 1 | 3.25 in 2023 |
| | 79.7 in 2019 | 2 | 72.2 in 1930 | 2 | 25.64 in 1962 | 2 | 3.64 in 2010 |
| 3 | 78.3 in 2016 | 3 | 72.3 in 1943 | 3 | 23.66 in 1922 | 3 | 4.01 in 1991 |
| 4 | 78.2 in 1986 | 4 | 72.5 in 1940 | 4 | 23.12 in 1997 | 4 | 5.08 in 1942 |
| 5 | 78.0 in 2015 | 5 | 72.7 in 1923 | 5 | 22.26 in 1912 | 5 | 5.44 in 1974 |
| 6 | 77.8 in 2018 | 6 | 73.0 in 1981 | 6 | 22.01 in 1952 | 6 | 5.61 in 2012 |
| 7 | 77.6 in 2024 | | 73.0 in 1944 | 7 | 21.30 in 1988 | 7 | 5.90 in 2019 |
| 8 | 77.3 in 2007 | | 73.0 in 1937 | 8 | 20.43 in 1928 | 8 | 5.95 in 1945 |
| 9 | 77.2 in 2023 | 9 | 73.1 in 1968 | 9 | 20.29 in 1957 | 9 | 6.05 in 1944 |
| 10 | 77.1 in 1998 | | 73.1 in 1956 | 10 | 19.80 in 1960 | 10 | 6.27 in 1984 |
| | 77.1 in 1990 | | | | | | |

Normal Temperature for Autumn at SRQ = 76.5°

Total Rainfall for Autumn 2024 = *20.22 inches

Normal Rainfall for Autumn at SRQ = 10.57 inches

* Rainfall missing on October 10th during Hurricane Milton

VENICE (records began in May 1955):

| Warmest Novembers | Coollest Novembers | Wettest Novembers | Driest Novembers |
|-----------------------|--------------------|-------------------|------------------------|
| 1 75.8 in 2015 | 1 64.2 in 2008 | 1 7.65 in 1997 | 1 0.00 in 1991 |
| 2 74.1 in 1985 | 2 64.7 in 1962 | 2 6.02 in 2020 | 2 0.02 in 2007 |
| 3 73.9 in 2022 | 3 64.9 in 1981 | 3 5.85 in 1972 | 3 0.04 in 2001 |
| 4 73.6 in 1998 | 64.9 in 1970 | 4 5.56 in 1983 | 4 0.06 in 2016 |
| 73.6 in 1994 | 5 65.1 in 1956 | 5 5.55 in 1963 | 5 0.15 in 1960 |
| 6 73.5 in 2020 | 6 65.2 in 1976 | 6 4.77 in 1957 | 6 0.20 in 1993 |
| 7 72.8 in 2024 | 7 65.4 in 1968 | 7 4.46 in 1980 | 7 0.30 in 1956 |
| 8 72.5 in 2013 | 8 65.8 in 2014 | 8 4.14 in 1998 | 8 0.31 in 1978 |
| 9 72.3 in 2003 | 9 66.0 in 1969 | 9 3.77 in 1968 | 9 0.32 in 2012 |
| 10 72.2 in 1978 | 10 66.8 in 2021 | 10 3.72 in 2014 | 0.32 in 2003 |
| | 66.8 in 1966 | | ... |
| | | | 24 0.81 in 2024 |

Normal Temperature for November at VNCF1 = 69.9°
Normal Rainfall for November at VNCF1 = 1.54 inches

| Warmest Autumns | Coollest Autumns | Wettest Autumns | Driest Autumns |
|-----------------------|------------------|-------------------------|-----------------|
| 1 78.9 in 2009 | 1 71.8 in 1976 | 1 26.44 in 1983 | 1 3.04 in 1961 |
| 2 78.5 in 1998 | 2 72.1 in 1968 | 2 25.83 in 1995 | 2 3.63 in 1981 |
| 3 78.4 in 2015 | 3 72.8 in 2008 | 3 25.14 in 2022 | 3 5.24 in 1978 |
| 4 78.3 in 2024 | 72.8 in 1956 | 4 21.38 in 1997 | 4 5.68 in 2023 |
| 5 78.0 in 2020 | 5 73.6 in 1974 | 5 20.89 in 1960 | 5 5.81 in 2010 |
| 6 77.8 in 2018 | 6 73.7 in 1987 | 6 20.27 in 1968 | 6 6.18 in 1964 |
| 77.8 in 2013 | 73.7 in 1981 | 7 19.23 in 1959 | 7 6.59 in 1984 |
| 77.8 in 1985 | 73.7 in 1962 | 8 18.86 in 1982 | 8 7.16 in 1990 |
| 9 77.6 in 2010 | 9 73.9 in 1977 | 9 18.67 in 2014 | 9 7.38 in 2011 |
| 10 77.3 in 1994 | 10 74.0 in 2006 | 10 18.33 in 1957 | 10 7.53 in 2019 |
| | | ... | |
| | | 17 16.26 in 2024 | |

Normal Temperature for Autumn at VNCF1 = 76.0°
Normal Rainfall for Autumn at VNCF1 = 12.05 inches

MYAKKA RIVER STATE PARK (Temperature records began in March 1956
and Rainfall records began in Sep 1943):

| Warmest Novembers | Coollest Novembers | Wettest Novembers | Driest Novembers |
|-------------------|--------------------|-------------------|------------------|
| 1 75.8 in 2015 | 1 62.1 in 1962 | 1 10.19 in 1997 | 1 0.00 in 2001 |
| 2 75.6 in 1986 | 2 62.4 in 1969 | 2 5.55 in 2022 | 2 0.02 in 1950 |
| 3 73.4 in 1998 | 3 62.8 in 1970 | 3 5.13 in 1953 | 3 0.03 in 1991 |
| 4 73.2 in 1985 | 4 63.2 in 1968 | 4 5.04 in 1947 | 4 0.07 in 2016 |
| 5 72.8 in 2020 | 5 64.1 in 2008 | 5 5.01 in 1972 | 5 0.19 in 2012 |
| 6 72.7 in 1958 | 6 65.3 in 2000 | 6 4.87 in 1981 | 6 0.20 in 1944 |
| 7 72.3 in 2022 | 7 65.4 in 2012 | 7 4.76 in 2020 | 7 0.30 in 1996 |
| | 65.4 in 1963 | 8 4.73 in 1958 | 0.30 in 1993 |
| 9 72.1 in 2013 | 9 65.6 in 2021 | 9 4.52 in 1963 | 0.30 in 1965 |
| 72.1 in 1978 | 10 65.8 in 1976 | 10 4.45 in 2002 | 10 0.37 in 1945 |

Average Temperature for November 2024 = Not Available Yet
Normal Temperature for November at MKCF1 = 69.1°

Total Rainfall for November 2024 = Not Available Yet
Normal Rainfall for November at MKCF1 = 2.02 inches

| Warmest Autumns | Coollest Autumns | Wettest Autumns | Driest Autumns |
|-----------------|------------------|------------------|-----------------|
| 1 78.5 in 2015 | 1 71.7 in 1962 | 1 37.20 in 2022* | 1 4.57 in 1961 |
| 2 78.3 in 1998 | 2 72.6 in 1968 | 2 25.70 in 1962 | 2 5.85 in 1974 |
| 3 78.0 in 2019 | 3 72.7 in 1976 | 3 23.65 in 1997 | 3 6.07 in 2023 |
| 78.0 in 2018 | 4 72.8 in 1963 | 4 23.43 in 1979 | 4 6.14 in 1991 |
| 5 77.9 in 1986 | 5 73.4 in 1970 | 5 21.95 in 2014 | 5 6.52 in 2008 |
| 6 77.8 in 1985 | 73.4 in 1969 | 6 21.67 in 1995 | 6 7.52 in 1970 |
| 7 77.7 in 1991 | 7 73.5 in 2008 | 7 21.13 in 1953 | 7 7.57 in 1955 |
| 8 77.5 in 2020 | 8 73.7 in 2000 | 8 20.63 in 1957 | 8 8.07 in 2012 |
| 9 76.8 in 2009 | 9 73.8 in 1992 | 9 20.18 in 2001 | 9 8.67 in 1950 |
| 76.8 in 1990 | 10 73.9 in 1987 | 10 19.62 in 1952 | 10 8.75 in 1996 |

Average Temperature for Autumn 2024 = Not Available Yet
Normal Temperature for Autumn at MKCF1 = 75.6°

Total Rainfall for Autumn 2024 = Not Available Yet
Normal Rainfall for Autumn at MKCF1 = 13.66 inches

WAUCHULA (records began in January 1933):

| Warmest Novembers | | Coolest Novembers | | Wettest Novembers | | Driest Novembers | |
|-------------------|---------------------|-------------------|--------------|-------------------|---------------------|------------------|---------------------|
| 1 | 75.7 in 1986 | 1 | 61.9 in 2012 | 1 | 11.18 in 1987 | 1 | 0.02 in 1940 |
| 2 | 74.6 in 2015 | 2 | 62.5 in 2014 | 2 | 10.38 in 1997 | 2 | 0.03 in 1967 |
| 3 | 74.4 in 1948 | | 62.5 in 1949 | 3 | 6.43 in 1953 | 3 | 0.08 in 1960 |
| 4 | 73.2 in 1946 | 4 | 63.2 in 1962 | 4 | 5.89 in 1963 | 4 | 0.12 in 1991 |
| 5 | 72.7 in 2020 | 5 | 63.4 in 1970 | 5 | 4.75 in 1972 | 5 | 0.16 in 1974 |
| | 72.7 in 1985 | 6 | 63.5 in 1956 | 6 | 4.41 in 2002 | 6 | 0.17 in 2016 |
| 7 | 72.7 in 1958 | 7 | 63.8 in 2000 | 7 | 4.37 in 2014 | 7 | 0.19 in 2012 |
| 8 | 71.9 in 2022 | 8 | 63.9 in 1969 | 8 | 3.93 in 2010 | 8 | 0.23 in 1944 |
| 9 | 71.7 in 1988 | 9 | 64.0 in 1950 | 9 | 3.91 in 1937 | 9 | 0.24 in 1966 |
| 10 | 71.4 in 1978 | 10 | 64.4 in 1954 | 10 | 3.44 in 1988 | | 0.24 in 1956 |
| | 71.4 in 1973 | | | | ... | | ... |
| 12 | 71.1 in 1998 | | | 45 | 1.23 in 2024 | 44 | 1.23 in 2024 |
| | 71.1 in 1947 | | | | 1.23 in 1989 | | 1.23 in 1989 |
| 14 | 70.7 in 1964 | | | | 1.23 in 1971 | | 1.23 in 1971 |
| 15 | 70.6 in 2024 | | | | | | |
| | 70.6 in 1992 | | | | | | |
| | 70.6 in 1982 | | | | | | |

Normal Temperature for November at WAUF1 = 67.8°
 Normal Rainfall for November at WAUF1 = 1.96 inches

| Warmest Autumns | | Coolest Autumns | | Wettest Autumns | | Driest Autumns | |
|-----------------|---------------------|-----------------|--------------|-----------------|----------------------|----------------|--------------|
| 1 | 78.1 in 2009 | 1 | 71.6 in 2014 | 1 | 31.84 in 2022 | 1 | 2.12 in 1961 |
| 2 | 77.9 in 2007 | 2 | 71.7 in 2012 | 2 | 27.02 in 1953 | 2 | 3.84 in 1974 |
| 3 | 77.7 in 1985 | 3 | 72.0 in 1956 | 3 | 23.48 in 1947 | 3 | 4.75 in 1967 |
| 4 | 77.6 in 2020 | 4 | 72.1 in 1943 | 4 | 23.20 in 2024 | 4 | 4.92 in 2008 |
| 5 | 77.5 in 2015 | 5 | 72.2 in 1954 | 5 | 20.13 in 1975 | 5 | 5.10 in 1978 |
| 6 | 77.2 in 1941 | 6 | 72.5 in 2010 | 6 | 20.12 in 1952 | 6 | 5.80 in 1991 |
| 7 | 76.9 in 2024 | | 72.5 in 2006 | 7 | 19.04 in 1987 | 7 | 6.09 in 1976 |
| | 76.9 in 2018 | | 72.5 in 1953 | 8 | 19.02 in 1960 | 8 | 6.10 in 1944 |
| 9 | 76.3 in 1946 | | 72.5 in 1944 | 9 | 19.00 in 1997 | 9 | 6.32 in 1980 |
| 10 | 76.2 in 1989 | 10 | 72.6 in 1976 | 10 | 18.33 in 2017 | 10 | 6.58 in 2003 |

Normal Temperature for Autumn at WAUF1 = 74.6°
 Normal Rainfall for Autumn at WAUF1 = 11.37 inches

ARCHBOLD BIO STN (records began in January 1969):

| Warmest Novembers | Coollest Novembers | Wettest Novembers | Driest Novembers |
|-------------------|--------------------|-------------------|------------------|
| 1 76.0 in 2015 | 1 62.2 in 2008 | 1 5.94 in 1987 | 1 0.00 in 2016 |
| 2 75.6 in 1986 | 2 63.1 in 2012 | 2 5.16 in 1998 | 0.00 in 2008 |
| 3 73.7 in 2020 | 3 63.2 in 1970 | 3 4.53 in 2022 | 3 0.08 in 1986 |
| 4 73.3 in 2022 | 4 64.2 in 1969 | 4 4.52 in 2002 | 4 0.12 in 1970 |
| 5 72.4 in 1992 | 5 64.4 in 1981 | 5 4.46 in 1997 | 5 0.13 in 1975 |
| 6 71.7 in 1985 | 6 65.1 in 2014 | 6 4.37 in 1992 | 6 0.20 in 1996 |
| 7 71.6 in 1994 | 7 65.3 in 2006 | 7 4.17 in 1977 | 7 0.21 in 2012 |
| 8 71.3 in 1978 | 8 65.4 in 2000 | 8 4.16 in 1994 | 8 0.24 in 2000 |
| 71.3 in 1973 | 9 66.0 in 1991 | 9 3.80 in 1988 | 9 0.29 in 1973 |
| 10 71.2 in 2013 | 10 66.3 in 1997 | 10 3.78 in 2005 | 10 0.40 in 2006 |

Average Temperature for November 1-22, 2024 = 74.0°

Normal Temperature for November at ACHF1 = 68.9°

Total Rainfall for November 1-22, 2024 = 0.44 inches

Normal Rainfall for November at ACHF1 = 1.74 inches

| Warmest Autumns | Coollest Autumns | Wettest Autumns | Driest Autumns |
|-----------------|------------------|------------------|-----------------|
| 1 78.2 in 2015 | 1 71.6 in 2008 | 1 22.87 in 2017 | 1 4.62 in 1996 |
| 2 78.0 in 2020 | 2 72.5 in 2012 | 2 22.49 in 1987 | 2 4.86 in 1990 |
| 3 77.4 in 1986 | 3 72.7 in 2006 | 3 21.60 in 2022 | 3 5.52 in 2006 |
| 4 76.6 in 2018 | 72.7 in 2000 | 4 20.74 in 1969 | 4 5.96 in 1974 |
| 5 76.3 in 2019 | 72.7 in 1976 | 5 18.09 in 2014 | 5 6.01 in 2018 |
| 76.3 in 1985 | 6 72.8 in 1997 | 6 17.33 in 1977 | 6 6.16 in 2010 |
| 7 76.2 in 2017 | 7 73.0 in 1981 | 7 17.04 in 2001 | 7 6.27 in 2008 |
| 8 76.0 in 2022 | 8 73.1 in 1970 | 8 16.98 in 2021 | 8 6.53 in 1980 |
| 9 75.8 in 2023 | 9 73.2 in 2014 | 9 16.79 in 1998 | 9 7.16 in 1984 |
| 75.8 in 2016 | 73.2 in 1984 | 10 16.55 in 2016 | 10 7.36 in 2007 |
| 75.8 in 1973 | | | |

Average Temperature for Sep 1 - Nov 25, 2024 = 78.2°

Normal Temperature for Autumn at ACHF1 = 75.1°

Total Rainfall for Sep 1 - Nov 25, 2024 = 15.59 inches

Normal Rainfall for Autumn at ACHF1 = 12.32 inches

PUNTA GORDA AREA (records began in May 1914):

| Warmest Novembers | Coollest Novembers | Wettest Novembers | Driest Novembers |
|------------------------|--------------------|------------------------|------------------------|
| 1 78.3 in 1948 | 1 63.9 in 1917 | 1 8.02 in 2022 | 1 0.00 in 1931 |
| 2 76.8 in 1986 | 2 64.2 in 1970 | 2 6.91 in 2020 | 2 0.02 in 2012 |
| 3 75.9 in 1946 | 64.2 in 1968 | 3 5.97 in 1916 | 3 0.05 in 2016 |
| 4 75.5 in 2015 | 4 65.1 in 2008 | 4 5.52 in 2002 | 0.05 in 1990 |
| 5 74.3 in 2022 | 5 65.7 in 1969 | 5 5.07 in 1987 | 5 0.07 in 2007 |
| 74.3 in 2020 | 6 65.8 in 1966 | 6 4.60 in 2014 | 6 0.08 in 1940 |
| 7 74.2 in 1985 | 7 66.1 in 1976 | 7 4.54 in 1965 | 7 0.09 in 1993 |
| 8 74.1 in 1958 | 66.1 in 1923 | 8 4.40 in 1972 | 8 0.10 in 1929 |
| 9 73.8 in 1961 | 9 67.0 in 2012 | 9 4.31 in 1921 | 9 0.11 in 1973 |
| 10 73.7 in 2024 | 67.0 in 1939 | 10 4.16 in 1951 | 10 0.12 in 1924 |
| | 67.0 in 1914 | ... | ... |
| | | 62 1.01 in 2024 | 47 1.01 in 2024 |
| | | 1.01 in 1967 | 1.01 in 1967 |

Normal Temperature for November at PGD = 70.2°

Normal Rainfall for November at PGD = 2.12 inches

| Warmest Autumns | Coollest Autumns | Wettest Autumns | Driest Autumns |
|-----------------------|------------------|-------------------------|-------------------------|
| 1 79.6 in 1948 | 1 72.4 in 1917 | 1 31.25 in 1959 | 1 5.37 in 2008 |
| 2 79.5 in 2024 | 2 73.0 in 1976 | 2 24.77 in 2022 | 2 5.75 in 1961 |
| 3 79.4 in 1986 | 73.0 in 1968 | 3 24.61 in 1922 | 3 5.87 in 1974 |
| 4 79.3 in 2020 | 4 73.5 in 1923 | 4 23.01 in 1962 | 4 5.91 in 1927 |
| 5 79.1 in 1946 | 5 73.7 in 1930 | 5 21.28 in 1953 | 5 5.95 in 1973 |
| 6 78.7 in 2018 | 6 73.8 in 1914 | 6 20.82 in 1995 | 6 6.00 in 1931 |
| 78.7 in 1985 | 7 73.9 in 1943 | 7 20.64 in 1947 | 7 6.22 in 1991 |
| 8 78.2 in 2023 | 73.9 in 1940 | 8 20.39 in 1924 | 8 6.33 in 1970 |
| 9 78.1 in 2015 | 9 74.0 in 1970 | 9 18.72 in 1929 | 9 6.62 in 1978 |
| 78.1 in 1947 | 10 74.1 in 2008 | 10 18.66 in 1951 | 10 6.82 in 1920 |
| | 74.1 in 1969 | ... | ... |
| | 74.1 in 1966 | 38 13.35 in 2024 | 69 13.35 in 2024 |

Normal Temperature for Autumn at PGD = 76.5°

Normal Rainfall for Autumn at PGD = 12.01 inches

FORT MYERS AREA (records began in January 1902):

| Warmest Novembers | | Coolest Novembers | | Wettest Novembers | | Driest Novembers | |
|-------------------|---------------------|-------------------|--------------|-------------------|---------------------|------------------|---------------|
| 1 | 78.3 in 1986 | 1 | 64.1 in 1917 | 1 | 8.06 in 1987 | 1 | Trace in 2016 |
| 2 | 76.7 in 2015 | 2 | 64.9 in 1910 | 2 | 7.58 in 1998 | | Trace in 2000 |
| 3 | 76.6 in 2022 | 3 | 65.4 in 1956 | 3 | 5.67 in 2002 | | Trace in 1944 |
| 4 | 75.6 in 1985 | 4 | 65.7 in 1949 | 4 | 4.60 in 1921 | 4 | 0.01 in 1990 |
| | 75.6 in 1948 | 5 | 65.9 in 1923 | 5 | 4.47 in 2014 | 5 | 0.02 in 1950 |
| 6 | 75.4 in 1994 | 6 | 66.1 in 1962 | 6 | 4.21 in 2020 | 6 | 0.03 in 1945 |
| 7 | 75.0 in 1946 | 7 | 66.2 in 1969 | 7 | 4.11 in 1997 | 7 | 0.04 in 1978 |
| 8 | 74.9 in 2020 | 8 | 66.3 in 1903 | 8 | 3.85 in 1972 | 8 | 0.06 in 1905 |
| 9 | 74.2 in 1978 | 9 | 66.6 in 1950 | 9 | 3.75 in 2005 | 9 | 0.08 in 1942 |
| 10 | 74.0 in 2024 | 10 | 66.7 in 1976 | 10 | 3.71 in 1922 | 10 | 0.09 in 2008 |
| | 74.0 in 2017 | | 66.7 in 1970 | ... | | | 0.09 in 2007 |
| | 74.0 in 1988 | | | 30 | 2.20 in 2024 | | 0.09 in 1931 |
| | | | | | 2.20 in 1985 | | |

Normal Temperature for November at FMY = 71.5°

Normal Rainfall for November at FMY = 1.78 inches

| Warmest Autumns | | Coolest Autumns | | Wettest Autumns | | Driest Autumns | |
|-----------------|---------------------|-----------------|--------------|-----------------|----------------------|----------------|--------------|
| 1 | 80.4 in 1986 | 1 | 72.5 in 1903 | 1 | 32.14 in 1922 | 1 | 5.16 in 1988 |
| 2 | 80.2 in 1985 | 2 | 72.7 in 1910 | 2 | 27.85 in 1969 | 2 | 5.95 in 1942 |
| 3 | 79.8 in 2019 | 3 | 72.9 in 1976 | 3 | 26.80 in 1924 | 3 | 5.96 in 1974 |
| 4 | 79.3 in 2022 | 4 | 73.7 in 1908 | 4 | 23.34 in 1947 | 4 | 5.97 in 1907 |
| 5 | 79.1 in 2024 | 5 | 73.8 in 1913 | 5 | 23.33 in 1953 | 5 | 6.11 in 1992 |
| | 79.1 in 2020 | 6 | 74.0 in 1923 | 6 | 22.99 in 1962 | 6 | 6.12 in 1906 |
| | 79.1 in 2015 | 7 | 74.1 in 1953 | 7 | 22.36 in 2020 | 7 | 6.31 in 2004 |
| 8 | 78.8 in 1979 | 8 | 74.3 in 1909 | 8 | 21.74 in 1998 | 8 | 6.50 in 1966 |
| 9 | 78.7 in 1994 | 9 | 74.4 in 1943 | 9 | 21.44 in 1952 | 9 | 6.67 in 1978 |
| 10 | 78.6 in 2018 | | 74.4 in 1914 | 10 | 20.90 in 2011 | 10 | 6.78 in 1904 |
| | | | | 11 | 20.85 in 1959 | | |
| | | | | 12 | 20.69 in 1985 | | |
| | | | | 13 | 20.66 in 1987 | | |
| | | | | 14 | 20.44 in 1939 | | |
| | | | | 15 | 20.41 in 1921 | | |
| | | | | 16 | 20.20 in 2024 | | |

Normal Temperature for Autumn at FMY = 77.2°

Normal Rainfall for Autumn at FMY = 13.86 inches

For more local climate information, please visit our web page at <https://www.weather.gov/tampabay> and look within the "Climate and Past Weather" drop down menu above the map of the area.