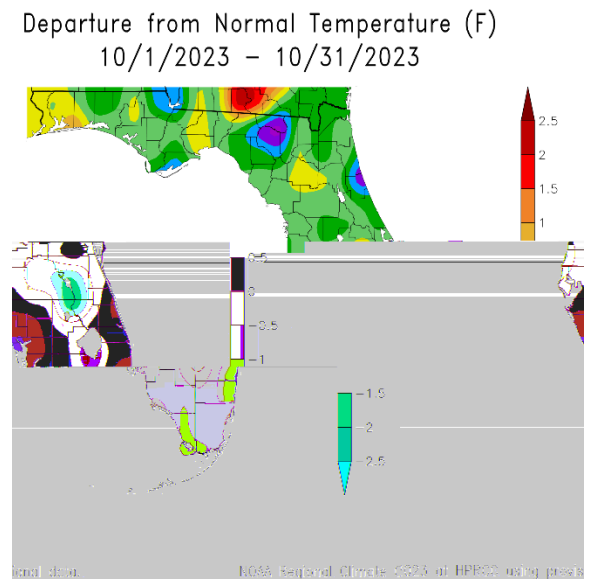
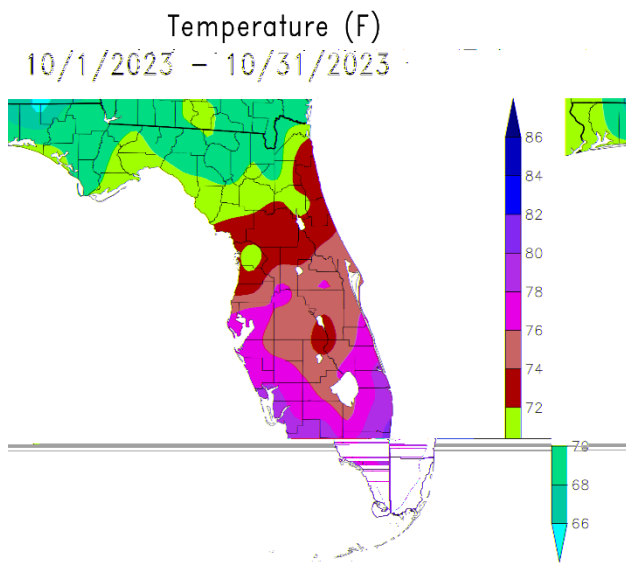


October 2023 Climate Summary for West Central and Southwest Florida

October 2023 started out rather hot and humid, but a couple of cold fronts moved through, one during the second week and another during the third, knocking temperatures down below normal for several days. This kept average temperatures for the month within a degree or so of normal.

OCTOBER TEMPERATURE (°F) :

Location	October 2023		Normal Oct Temp	Dep fm Normal	Records Began
	Rank	Avg Temp			
Fort Myers Area	27th Warmest (tie)	78.5°	78.0°	+0.5°	Jan 1902
Punta Gorda Area	21st Warmest	78.1°	77.2°	+0.9°	May 1914
Sarasota-Bradenton Area	18th Warmest	77.8°	77.3°	+0.5°	Jan 1911
Venice	16th Warmest (tie)	77.6°	76.6°	+1.0°	May 1955
Tampa Area	21st Warmest (tie)	77.5°	77.4°	+0.1°	Apr 1890
St Petersburg Area	62nd Coolest (tie)	77.5°	77.8°	-0.3°	Aug 1914
Plant City	85th Coolest (tie)	76.2°	76.7°	-0.5°	Sep 1892
Lakeland Area	70th Coolest (tie)	76.0°	76.4°	-0.4°	Jan 1915
Winter Haven Area	34th Coolest (tie)	75.7°	77.1°	-1.4°	Mar 1941
Archbold Bio Stn	31st Coolest (tie)	75.5°	75.7°	-0.2°	Jan 1969
Wauchula 2 N	45th Warmest	75.3°	75.3°	0.0°	Jan 1933
Bartow	53rd Coolest (tie)	74.8°	75.5°	-0.7°	Jun 1892
St. Leo	58th Coolest (tie)	73.7°	74.1°	-0.4°	Apr 1895
Brooksville Area	49th Coolest (tie)	72.9°	73.1°	-0.2°	Jan 1892

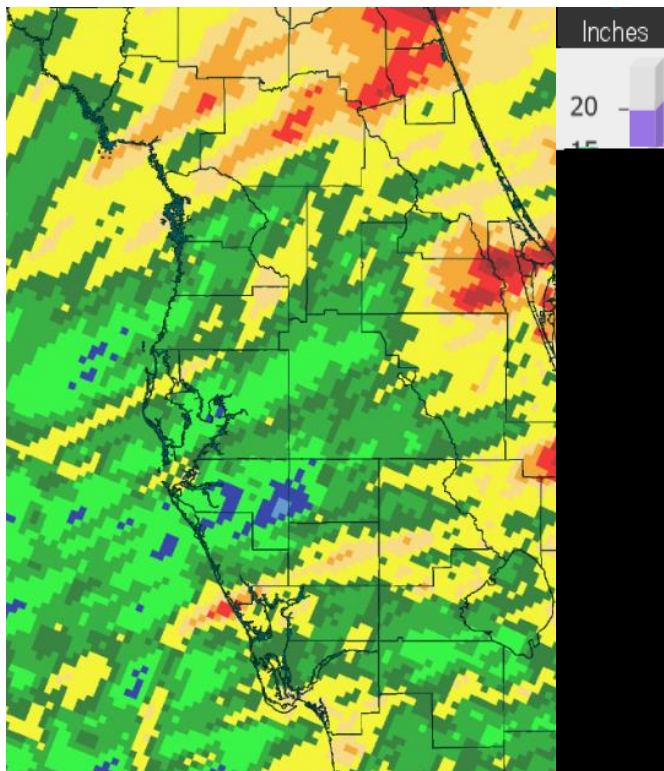


Graphics Source: NOAA Regional Climate Centers

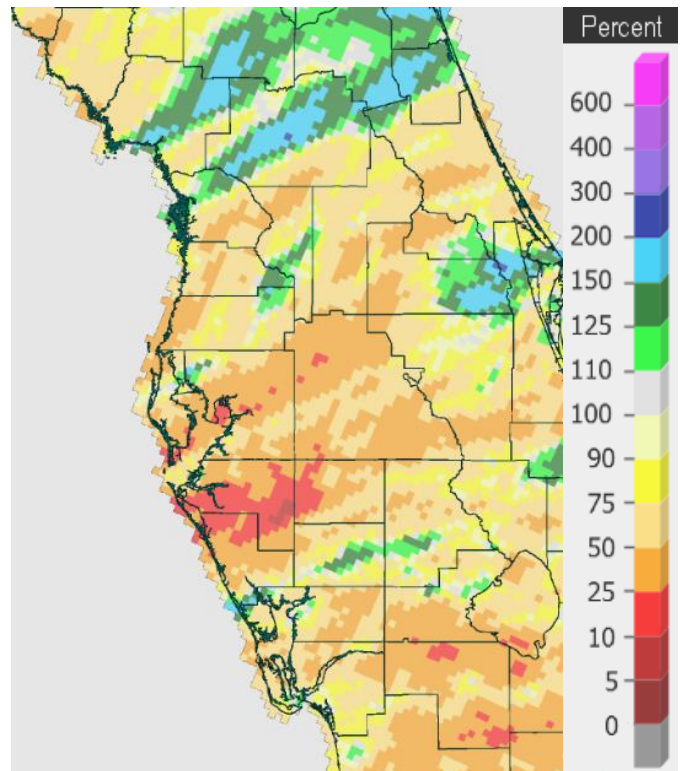
Rainfall in October 2023 was mostly below normal with some areas here and there seeing above normal amounts. Some of the below normal amounts ended up just outside the Top Ten Driest for October.

OCTOBER RAINFALL (inches) :

Location	October 2023 Rank	October 2023 Rain Total	Normal Oct Rain	Dep fm Normal	Records Began
Archbold Bio Stn	8th Wettest	5.34	3.41	+1.93	Jan 1969
St. Leo	36th Wettest	3.93	3.06	+0.87	Apr 1895
Punta Gorda Area	55th Driest	2.78	3.02	-0.24	May 1914
Lakeland Area	63rd Driest	2.53	3.04	-0.51	Jan 1915
Bartow	65th Driest (tie)	2.25	3.03	-0.78	Jun 1892
Fort Myers Area	43rd Driest	1.90	3.08	-1.18	Jan 1902
Brooksville Area	45th Driest	1.15	2.79	-1.64	Jan 1892
Tarpon Springs	37th Driest (tie)	1.08	3.19	-2.11	Jan 1892
Plant City	24th Driest (tie)	0.94	2.58	-1.64	Sep 1892
Wauchula 2 N	17th Driest	0.89	3.09	-2.20	Jan 1933
Winter Haven Area	15th Driest	0.81	2.22	-1.41	Mar 1941
Venice	13th Driest	0.76	3.35	-2.59	May 1955
Sarasota-Bradenton Area	18th Driest	0.70	2.76	-2.06	Jan 1911
St. Petersburg Area	12th Driest	0.44	2.16	-1.72	Aug 1914
Tampa Area	13th Driest	0.38	2.34	-1.96	Apr 1890



Rainfall October 2023



Percent of Normal

On the following pages are tables of the Top Ten Warmest, Coolest, Driest, and Wettest Octobers at some official NWS locations, which include the average/total for this October where available, and the 1991-2020 Normal (average) temperature and rainfall for the month of October.

CHIEFLAND 5 SE (records began in July 1956):

Warmest Octobers		Coolest Octobers		Wettest Octobers		Driest Octobers	
1	77.1 in 1959	1	66.9 in 1987	1	8.45 in 1959	1	0.00 in 2010
2	76.9 in 2018	2	67.1 in 1976	2	8.17 in 1997	2	0.02 in 2022
3	76.6 in 2020	3	67.4 in 1977	3	7.32 in 1995	3	0.11 in 2001
4	76.5 in 2019	4	67.6 in 1957	4	7.12 in 1971	4	0.14 in 1973
5	75.5 in 1985	5	67.9 in 1967	5	7.01 in 1993	5	0.15 in 1979
6	75.0 in 1998		67.9 in 1964	6	6.98 in 2019		0.15 in 1974
7	74.6 in 2002	7	68.0 in 1974	7	6.44 in 1992	7	0.17 in 2000
8	74.5 in 2007	8	68.5 in 2011	8	6.41 in 2007	8	0.20 in 1987
9	74.2 in 1971	9	68.6 in 2010	9	6.40 in 2002	9	0.23 in 1981
	74.2 in 1970	10	68.8 in 2022	10	5.66 in 1983	10	0.24 in 1984

Average Temperature for October 2023 = Not Available Yet
 Normal Temperature for October at CHIF1 = 71.5°

Total Rainfall for October 2023 = Not Available Yet
 Normal Rainfall for October at CHIF1 = 3.17 inches

INVERNESS 3 SE (records began in July 1948):

Warmest Octobers		Coolest Octobers		Wettest Octobers		Driest Octobers	
1	78.4 in 2019	1	67.8 in 1987	1	10.60 in 1958	1	Trace in 1974
2	78.2 in 1959	2	68.1 in 1976	2	9.04 in 1992	2	0.03 in 2010
3	77.6 in 2020	3	69.7 in 1977	3	6.73 in 2019		0.03 in 1961
4	77.3 in 1949	4	69.9 in 2011	4	5.81 in 1995	4	0.19 in 1963
5	76.8 in 2007	5	70.1 in 1992	5	5.71 in 1956	5	0.20 in 2000
6	76.0 in 1970	6	70.2 in 1988	6	5.68 in 1960	6	0.62 in 1967
7	75.7 in 1995	7	70.5 in 1997	7	5.53 in 1959	7	0.69 in 2015
8	75.6 in 1969	8	70.6 in 1954	8	5.38 in 1993	8	0.70 in 1987
9	75.5 in 1971	9	70.8 in 2006	9	5.33 in 1975	9	0.71 in 2018
	75.5 in 1960		70.8 in 2001	10	4.91 in 1971	10	0.74 in 1977
	75.5 in 1950						

Average Temperature for October 2023 = Not Available Yet
 Normal Temperature for October at INVF1 = 72.4°

Total Rainfall for October 2023 = Not Available Yet
 Normal Rainfall for October at INVF1 = 2.92 inches

BROOKSVILLE AREA (records began in January 1892):

Warmest Octobers	Coolest Octobers	Wettest Octobers	Driest Octobers
1 78.5 in 1959	1 69.4 in 1920	1 15.64 in 1921	1 0.00 in 2010
78.5 in 1919	2 69.7 in 1892	2 12.52 in 1915	2 0.01 in 1974
3 78.4 in 1911	3 70.3 in 2010	3 10.77 in 1995	3 0.07 in 2000
4 78.3 in 1941	4 70.4 in 2000	4 9.63 in 1944	4 0.12 in 1984
5 78.1 in 2019	70.4 in 1952	5 8.97 in 1958	5 0.18 in 1951
6 77.7 in 2020	6 70.5 in 1923	6 8.92 in 1922	6 0.22 in 1963
7 77.1 in 2007	7 70.7 in 1953	7 7.58 in 1936	7 0.28 in 1935
8 77.0 in 1949	70.7 in 1924	8 7.50 in 1952	8 0.30 in 1901
9 76.8 in 1915	9 70.8 in 1943	9 6.87 in 1911	9 0.35 in 1977
10 76.7 in 1928	10 70.9 in 2008	10 6.35 in 1910	10 0.36 in 1979
76.7 in 1912	70.9 in 1896
...	...	85 1.15 in 2023	45 1.15 in 2023
63 72.9 in 2023	49 72.9 in 2023		
72.9 in 1999	72.9 in 1999		

Normal Temperature for October at BKV = 73.1°

Normal Rainfall for October at BKV = 2.79 inches

ST LEO (records began in April 1895):

Warmest Octobers	Coolest Octobers	Wettest Octobers	Driest Octobers
1 79.6 in 1985	1 69.2 in 1930	1 15.80 in 1921	1 0.00 in 2010
2 78.9 in 2002	2 69.4 in 1903	2 10.38 in 1924	2 0.03 in 2000
3 78.8 in 1941	3 69.9 in 1920	3 9.66 in 1910	3 0.10 in 1974
4 78.6 in 2007	4 70.0 in 1943	4 8.45 in 1922	0.10 in 1940
5 78.4 in 2019	5 70.1 in 1987	5 7.89 in 2007	5 0.14 in 1963
78.4 in 2009	6 70.4 in 2011	6 7.49 in 1944	6 0.23 in 1984
78.4 in 1959	7 70.5 in 1992	7 7.23 in 2012	7 0.29 in 1978
8 78.0 in 1919	8 70.7 in 1917	8 7.11 in 1938	0.29 in 1961
9 77.7 in 2020	9 70.9 in 1976	9 6.68 in 1959	9 0.30 in 1920
10 77.3 in 1949	10 71.0 in 1938	10 6.55 in 1915	0.30 in 1907
77.3 in 1925	71.0 in 1929
...	...	36 3.93 in 2023	92 3.93 in 2023
69 73.7 in 2023	58 73.7 in 2023		
73.7 in 2015	73.7 in 2015		
73.7 in 1916	73.7 in 1916		

Normal Temperature for October at STLF1 = 74.1°

Normal Rainfall for October at STLF1 = 3.06 inches

TARPON SPRINGS (records began in January 1892):

Warmest Octobers	Coolest Octobers	Wettest Octobers	Driest Octobers
1 81.2 in 1919	1 70.3 in 1987	1 14.13 in 1995	1 0.02 in 2010
2 79.8 in 2019	2 71.0 in 1940	2 12.43 in 1921	2 0.04 in 2000
3 79.7 in 1985	3 71.1 in 1913	3 10.91 in 1938	3 0.06 in 1940
4 79.2 in 2018	4 71.2 in 1974	4 10.33 in 1911	4 0.07 in 1974
5 79.0 in 1941	71.2 in 1943	5 9.49 in 1975	5 0.08 in 1963
6 78.7 in 2007	6 71.5 in 1938	6 9.20 in 1992	6 0.11 in 1961
7 78.5 in 1911	71.5 in 1907	7 8.13 in 1922	7 0.12 in 1942
8 78.2 in 1949	8 71.6 in 1917	8 7.57 in 1917	8 0.25 in 1905
9 78.1 in 2020	71.6 in 1908	9 6.89 in 1936	9 0.31 in 1979
10 77.9 in 1995	71.6 in 1892	10 6.38 in 1968	10 0.34 in 1903
77.9 in 1918	
		95 1.08 in 2023	37 1.08 in 2023
		1.08 in 1988	1.08 in 1988

Average Temperature for October 2023 = Several Days Missing/Unrepresentative
Normal Temperature for October at TRPF1 = 75.6°
Normal Rainfall for October at TRPF1 = 3.19 inches

TAMPA AREA (records began in April 1890):

Warmest Octobers	Coolest Octobers	Wettest Octobers	Driest Octobers
1 81.5 in 2020	1 70.0 in 1891	1 10.33 in 1922	1 Trace in 2010
2 81.1 in 2019	2 70.8 in 1964	2 9.88 in 1921	2 0.02 in 1940
3 80.4 in 2021	3 70.9 in 1976	3 7.36 in 1952	3 0.03 in 1942
80.4 in 1919	4 71.3 in 1987	4 6.94 in 2019	4 0.06 in 2000
5 80.0 in 2018	5 71.7 in 1943	6.94 in 1938	5 0.09 in 1988
6 79.8 in 2007	71.7 in 1913	6 6.26 in 1959	6 0.12 in 1920
7 79.6 in 1959	71.7 in 1908	7 6.21 in 1986	7 0.16 in 1979
8 79.4 in 1941	71.7 in 1903	8 5.67 in 1944	8 0.23 in 1974
9 79.2 in 1985	9 71.8 in 1957	9 5.66 in 1911	9 0.25 in 1961
10 78.8 in 2002	10 72.0 in 1938	10 5.25 in 1924	10 0.29 in 1984
...			0.29 in 1963
21 77.5 in 2023			12 0.36 in 1901
77.5 in 1998			13 0.38 in 2023
77.5 in 1971			

Normal Temperature for October at TPA = 77.4°
Normal Rainfall for October at TPA = 2.34 inches

ST PETERSBURG AREA (records began in August 1914):

Warmest Octobers	Coolest Octobers	Wettest Octobers	Driest Octobers
1 81.7 in 1985	1 72.3 in 1952	1 17.63 in 1986	1 0.00 in 1942
2 81.5 in 2019	2 73.0 in 1987	2 14.12 in 1952	2 Trace in 2010
3 81.4 in 2021	73.0 in 1938	3 10.05 in 1922	3 0.12 in 2000
81.4 in 1919	4 73.1 in 1964	4 9.55 in 1938	4 0.14 in 1974
5 81.0 in 2018	5 73.2 in 1953	5 9.13 in 1921	5 0.20 in 1998
6 80.6 in 2020	6 73.4 in 1957	6 8.59 in 1959	6 0.23 in 2022
80.6 in 1941	7 73.5 in 1943	7 8.14 in 1918	7 0.29 in 1961
8 80.0 in 2002	73.5 in 1917	8 8.09 in 1944	8 0.30 in 1988
9 79.9 in 1959	9 73.7 in 1920	9 7.17 in 2019	9 0.31 in 1963
10 79.8 in 2013	10 74.0 in 2011	10 6.77 in 1917	10 0.35 in 1940
79.8 in 2007	74.0 in 1956		11 0.37 in 1979
79.8 in 2005	74.0 in 1954		12 0.44 in 2023
...	...		
45 77.5 in 2023	62 77.5 in 2023		
77.5 in 2012	77.5 in 2012		
77.5 in 1945	77.5 in 1945		
77.5 in 1935	77.5 in 1935		

Normal Temperature for October at SPG = 77.8°

Normal Rainfall for October at SPG = 2.16 inches

PLANT CITY (records began in September 1892):

Warmest Octobers	Coolest Octobers	Wettest Octobers	Driest Octobers
1 81.2 in 2019	1 69.8 in 1940	1 10.43 in 1959	1 0.04 in 2000
2 80.8 in 2020	2 70.0 in 1930	2 9.01 in 1938	2 0.09 in 1940
3 79.9 in 2018	3 70.2 in 1943	3 8.05 in 1924	3 0.10 in 2010
4 79.1 in 2021	70.2 in 1929	4 7.32 in 2019	4 0.14 in 1963
5 78.9 in 1959	5 70.6 in 2000	5 7.18 in 1917	5 0.16 in 1979
6 78.8 in 1985	70.6 in 1987	6 6.86 in 1975	6 0.21 in 1907
7 78.5 in 1918	70.6 in 1938	7 6.66 in 1952	7 0.26 in 2018
8 78.0 in 2007	8 71.1 in 1913	8 6.43 in 1898	8 0.28 in 1988
78.0 in 1941	9 71.2 in 1909	9 6.32 in 1969	9 0.29 in 1961
10 77.9 in 2002	10 71.3 in 1944	10 5.62 in 1986	10 0.33 in 2022
	71.3 in 1942		...
...	...		24 0.94 in 2023
25 76.2 in 2023	85 76.2 in 2023		0.94 in 1908
76.2 in 1998	76.2 in 1998		
76.2 in 1983	76.2 in 1983		
76.2 in 1970	76.2 in 1970		

Normal Temperature for October at PLCF1 = 76.7°

Normal Rainfall for October at PLCF1 = 2.58 inches

LAKELAND AREA (records began in January 1915):

Warmest Octobers	Coolest Octobers	Wettest Octobers	Driest Octobers
1 80.4 in 2019	1 70.9 in 1976	1 9.19 in 2005	1 0.00 in 2010
2 80.1 in 2020	2 71.0 in 1943	2 7.73 in 1922	2 0.04 in 1974
3 79.9 in 1985	3 71.2 in 1964	3 6.93 in 1917	3 0.11 in 1973
4 79.3 in 2018	4 71.8 in 1974	4 6.72 in 1952	4 0.16 in 2000
5 78.8 in 1941	71.8 in 1957	5 6.63 in 1959	5 0.18 in 1940
78.8 in 1919	71.8 in 1938	6 6.50 in 2011	6 0.19 in 1935
7 78.6 in 2009	7 71.9 in 1930	7 6.29 in 1938	7 0.23 in 1978
78.6 in 1959	8 72.0 in 1924	8 6.23 in 1982	8 0.25 in 1942
9 78.5 in 2007	9 72.1 in 1952	9 6.19 in 2019	9 0.29 in 1926
10 78.4 in 2021	10 72.2 in 1967	10 6.00 in 2007	10 0.33 in 1963
	72.2 in 1953
	72.2 in 1944	46 2.53 in 2023	63 2.53 in 2023
...	...		
35 76.0 in 2023	70 76.0 in 2023		
76.0 in 1975	76.0 in 1975		
76.0 in 1970	76.0 in 1970		
76.0 in 1951	76.0 in 1951		

Normal Temperature for October at LLDF1 = 76.4°

Normal Rainfall for October at LLDF1 = 3.04 inches

WINTER HAVEN AREA (records began in March 1941):

Warmest Octobers	Coolest Octobers	Wettest Octobers	Driest Octobers
1 82.2 in 2019	1 70.9 in 1987	1 9.43 in 1952	1 0.02 in 2010
2 80.7 in 2020	2 71.7 in 1977	2 9.42 in 1959	2 0.16 in 2000
3 80.4 in 2018	3 72.2 in 1976	3 8.00 in 2011	3 0.17 in 2004
4 79.3 in 1971	72.2 in 1943	4 7.60 in 1950	4 0.19 in 1998
5 79.2 in 2021	5 72.6 in 2011	5 7.15 in 1956	5 0.43 in 2009
6 79.0 in 1985	72.6 in 1974	6 6.90 in 1944	0.43 in 1974
7 78.9 in 2007	7 73.0 in 1958	7 6.77 in 1995	7 0.46 in 1963
78.9 in 1959	73.0 in 1957	8 6.47 in 2005	8 0.55 in 1989
9 78.7 in 2002	9 73.1 in 2000	9 6.13 in 2002	9 0.61 in 2015
10 78.5 in 1995	73.1 in 1944	10 5.66 in 1969	0.61 in 1942
			11 0.63 in 1979
...	...		12 0.64 in 2018
36 75.7 in 2023	34 75.7 in 2023		13 0.74 in 1973
75.7 in 1990	75.7 in 1990		14 0.78 in 1967
75.7 in 1981	75.7 in 1981		15 0.81 in 2023

Normal Temperature for October at GIF = 77.1°

Normal Rainfall for October at GIF = 2.22 inches

BARTOW (records began in June 1892):

Warmest Octobers	Coolest Octobers	Wettest Octobers	Driest Octobers
1 79.8 in 2013	1 70.6 in 1913	1 12.55 in 1910	1 0.00 in 2000
2 79.6 in 2019	2 71.2 in 1894	2 10.22 in 1924	2 0.13 in 1940
3 79.3 in 1919	3 71.3 in 1940	3 9.10 in 1959	3 0.20 in 2013
4 79.1 in 2007	71.3 in 1892	4 8.98 in 1952	0.20 in 1963
5 79.0 in 2020	5 71.4 in 1977	5 8.75 in 2011	5 0.23 in 1998
6 78.9 in 1959	6 71.5 in 1976	6 8.43 in 1917	6 0.30 in 2010
7 78.8 in 2002	7 71.7 in 1929	7 8.18 in 1922	7 0.31 in 1974
8 78.4 in 1911	8 71.9 in 2011	8 7.90 in 1894	8 0.34 in 1973
9 78.3 in 2018	9 72.0 in 1895	9 7.40 in 1938	9 0.36 in 1901
78.3 in 2009	10 72.1 in 1924	10 7.26 in 1950	10 0.37 in 1942
78.3 in 1902	72.1 in 1920
...	...	66 2.25 in 2023	65 2.25 in 2023
67 74.8 in 2023	53 74.8 in 2023	2.25 in 2012	2.25 in 2012
74.8 in 1899	74.8 in 1899		

Normal Temperature for October at BARF1 = 75.5°

Normal Rainfall for October at BARF1 = 3.03 inches

SARASOTA-BRADENTON AREA (records began in January 1911):

Warmest Octobers	Coolest Octobers	Wettest Octobers	Driest Octobers
1 82.7 in 2019	1 70.6 in 1976	1 12.50 in 1952	1 0.00 in 1942
2 81.2 in 2020	2 71.0 in 1943	2 12.02 in 1922	2 Trace in 2010
3 80.4 in 2007	3 71.2 in 1940	3 10.48 in 1938	3 0.02 in 1963
4 79.5 in 1959	4 71.4 in 1913	4 7.31 in 1918	4 0.04 in 1973
5 79.2 in 2016	5 71.5 in 1977	5 7.23 in 1957	5 0.10 in 2000
79.2 in 1919	6 71.6 in 1987	6 7.22 in 1924	0.10 in 1940
7 79.0 in 2021	7 71.7 in 1930	7 7.21 in 1921	7 0.31 in 1920
8 78.9 in 2018	8 71.8 in 1938	8 7.11 in 1990	8 0.44 in 1974
78.9 in 1985	71.8 in 1929	9 7.09 in 1993	9 0.45 in 1984
10 78.5 in 1941	10 72.0 in 1944	10 6.74 in 2007	10 0.53 in 1979
...
18 77.8 in 2023			18 0.70 in 2023

Normal Temperature for October at SRQ = 77.3°

Normal Rainfall for October at SRQ = 2.76 inches

VENICE (records began in May 1955):

Warmest Octobers	Coolest Octobers	Wettest Octobers	Driest Octobers
1 81.5 in 2019	1 70.8 in 1987	1 12.83 in 1995	1 0.00 in 2010
2 80.4 in 2009	2 71.4 in 1976	2 9.90 in 2005	2 0.08 in 1981
3 79.5 in 2021	3 72.1 in 1974	3 9.61 in 1959	3 0.09 in 1963
79.5 in 2002	4 72.2 in 1977	4 8.48 in 1982	4 0.18 in 2000
5 79.2 in 2018	5 73.0 in 1968	5 7.78 in 1986	5 0.20 in 1974
79.2 in 1959	6 73.3 in 1957	6 7.73 in 1967	6 0.36 in 1998
7 79.0 in 2020	7 73.6 in 2008	7 7.45 in 1993	7 0.56 in 1970
79.0 in 2012	73.6 in 2000	8 6.65 in 1983	8 0.69 in 2022
79.0 in 1985	9 74.1 in 1964	9 6.39 in 1969	9 0.72 in 2003
10 78.9 in 1998	10 74.4 in 1967	10 6.21 in 1958	10 0.73 in 1973
...			11 0.74 in 1961
16 77.6 in 2023			12 0.75 in 1988
77.6 in 2015			13 0.76 in 2023
77.6 in 1994			

Normal Temperature for October at VNCF1 = 76.6°

Normal Rainfall for October at VNCF1 = 3.35 inches

MYAKKA RIVER STATE PARK (Temperature records began in March 1956
and Rainfall records began in Sep 1943):

Warmest Octobers	Coolest Octobers	Wettest Octobers	Driest Octobers
1 80.9 in 2019	1 71.5 in 1987	1 10.01 in 1951	1 0.00 in 2010
2 79.9 in 2007	2 72.0 in 1992	2 9.32 in 1952	0.00 in 1974
3 79.5 in 2018	3 72.5 in 1977	3 8.59 in 1995	3 0.10 in 2000
79.5 in 1985	72.5 in 1957	4 7.70 in 1959	4 0.30 in 1963
5 79.0 in 1991	5 72.6 in 1976	5 6.98 in 2019	5 0.44 in 1973
6 78.9 in 2020	6 72.8 in 1963	6 6.81 in 1999	6 0.61 in 1978
78.9 in 1998	7 73.2 in 1974	7 6.65 in 2005	0.61 in 1977
8 78.1 in 1975	8 73.5 in 1958	8 6.54 in 1994	8 0.85 in 1962
9 78.0 in 1959	9 73.6 in 1962	9 6.40 in 1943	9 1.01 in 1955
10 77.9 in 1990	10 73.7 in 2011	10 6.29 in 1957	10 1.03 in 1980
77.9 in 1983			

Average Temperature for October 2023 = Not Available Yet

Normal Temperature for October at MKCF1 = 76.3

Total Rainfall for October 2023 = Not Available Yet

Normal Rainfall for October at MKCF1 = 3.19 inches

WAUCHULA 2 N (records began in January 1933):

Warmest Octobers	Coolest Octobers	Wettest Octobers	Driest Octobers
1 80.8 in 2007	1 70.6 in 1943	1 10.36 in 1975	1 0.00 in 2000
2 79.8 in 2009	2 71.2 in 2011	2 9.67 in 1952	2 Trace in 1940
3 79.4 in 1985	3 71.4 in 2000	3 9.38 in 1938	3 0.10 in 1974
4 79.3 in 2019	4 71.8 in 1987	4 8.64 in 1995	4 0.22 in 1981
79.3 in 1941	71.8 in 1944	5 8.27 in 2011	5 0.27 in 1963
6 78.8 in 2020	6 71.9 in 2010	6 6.85 in 1950	6 0.36 in 1984
78.8 in 1959	7 72.0 in 1954	7 6.21 in 1953	7 0.45 in 1979
8 78.3 in 1936	8 72.2 in 1977	8 5.61 in 1999	8 0.53 in 2006
9 78.0 in 2018	72.2 in 1953	9 5.55 in 2005	9 0.57 in 2021
10 77.7 in 1939	10 72.4 in 1964	5.55 in 1945	0.57 in 1961
...
45 75.3 in 2023	40 75.3 in 2023		17 0.89 in 2023
75.3 in 1973	75.3 in 1973		

Normal Temperature for October at WAUF1 = 75.3

Normal Rainfall for October at WAUF1 = 3.09 inches

ARCHBOLD BIO STN (records began in January 1969):

Warmest Octobers	Coolest Octobers	Wettest Octobers	Driest Octobers
1 79.3 in 2019	1 71.9 in 1977	1 9.24 in 2005	1 0.00 in 2010
2 79.0 in 2020	2 72.0 in 1987	2 8.40 in 1969	2 0.13 in 1984
79.0 in 2007	72.0 in 1976	3 7.19 in 2017	3 0.25 in 2003
4 77.9 in 1995	4 72.4 in 2011	4 7.15 in 1995	4 0.40 in 1980
77.9 in 1985	5 72.5 in 2010	5 6.95 in 1993	5 0.47 in 2009
6 77.8 in 2018	72.5 in 2000	6 6.89 in 2011	6 0.53 in 1990
7 77.0 in 2016	72.5 in 1992	7 6.63 in 1987	7 0.56 in 1974
8 76.8 in 2015	8 72.6 in 1988	8 5.34 in 2023	8 0.68 in 1997
9 76.7 in 2009	9 72.7 in 2008	9 5.18 in 1983	9 0.69 in 2022
76.7 in 2002	10 72.9 in 1997	10 4.68 in 2001	10 0.76 in 2018
76.7 in 1975			
...	...		
25 75.5 in 2023	31 75.5 in 2023		

Normal Temperature for October at ACHF1 = 75.7°

Normal Rainfall for October at ACHF1 = 3.41 inches

PUNTA GORDA AREA (records began in May 1914):

Warmest Octobers	Coolest Octobers	Wettest Octobers	Driest Octobers
1 80.9 in 2020	1 72.9 in 1976	1 13.99 in 1924	1 0.00 in 1942
2 80.6 in 2019	2 73.0 in 1938	2 12.21 in 1959	2 Trace in 1940
80.6 in 1949	3 73.1 in 1987	3 11.60 in 1952	3 0.01 in 2010
4 80.4 in 1951	73.1 in 1940	4 10.88 in 1995	4 0.10 in 1981
5 80.3 in 1959	5 73.3 in 1974	5 10.03 in 1951	5 0.16 in 1973
6 80.1 in 2018	73.3 in 1930	6 9.64 in 1945	6 0.26 in 1961
7 80.0 in 1985	7 73.4 in 1929	7 9.18 in 1922	7 0.33 in 2022
8 79.9 in 2007	8 73.5 in 2000	8 8.86 in 1996	8 0.45 in 2003
9 79.8 in 1919	73.5 in 1977	9 8.20 in 1953	9 0.56 in 1974
10 79.6 in 1960	10 73.7 in 1917	10 8.05 in 1932	10 0.63 in 1979
...	
21 78.1 in 2023		52 2.78 in 2023	55 2.78 in 2023

Normal Temperature for October at PGD = 77.2°
Normal Rainfall for October at PGD = 3.02 inches

FORT MYERS AREA (records began in January 1902):

Warmest Octobers	Coolest Octobers	Wettest Octobers	Driest Octobers
1 82.9 in 2019	1 72.5 in 1903	1 19.70 in 1924	1 0.05 in 1963
2 81.7 in 1985	2 72.6 in 1976	2 12.04 in 1959	2 0.16 in 1973
3 81.2 in 2021	3 73.3 in 1913	3 11.91 in 1951	3 0.19 in 1974
4 81.1 in 2007	4 73.5 in 1953	4 11.08 in 1922	4 0.30 in 1935
5 80.4 in 2020	5 73.6 in 1957	5 11.03 in 1969	5 0.39 in 1979
80.4 in 1919	73.6 in 1908	6 10.80 in 1921	6 0.40 in 1988
7 80.0 in 1995	7 73.7 in 1943	7 10.73 in 2011	0.40 in 1981
80.0 in 1959	8 74.0 in 1977	8 9.26 in 1910	8 0.43 in 1977
9 79.8 in 1981	74.0 in 1920	9 8.34 in 1952	9 0.45 in 2010
10 79.5 in 2018	10 74.1 in 1940	10 8.17 in 2005	10 0.50 in 1942
	74.1 in 1910
...	...	80 1.90 in 2023	43 1.90 in 203
27 78.5 in 2023	95 78.5 in 2023		
78.5 in 2023	78.5 in 2023		

Normal Temperature for October at FMY = 78.0°
Normal Rainfall for October at FMY = 3.08 inches

For more Climate information, visit our web page at the following link:
<https://www.weather.gov/tampabay> and then go to the Climate and Past Weather
drop down menu above the graphical forecast images.