

September 2024 Climate Summary for West Central and Southwest Florida

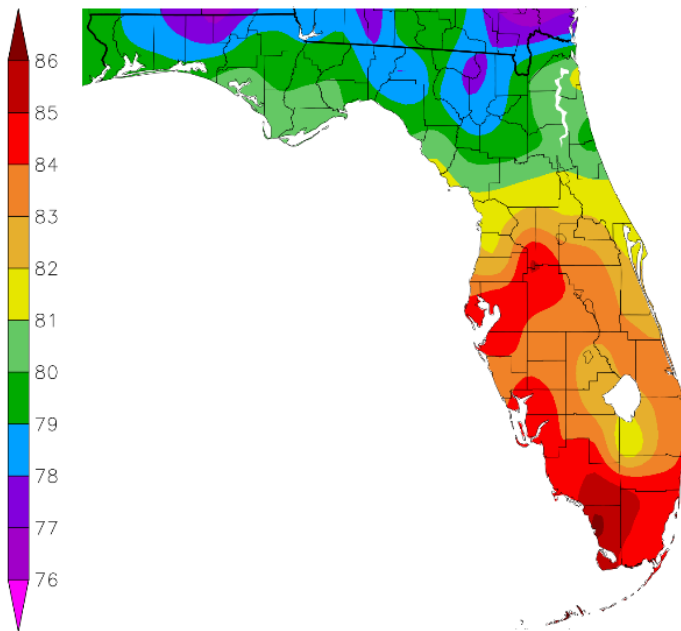
Temperatures this September averaged from about 1 to 4 degrees above normal with most sites ending up in the Top Ten Warmest for September.

SEPTEMBER TEMPERATURE (°F):

Location	September 2024		Normal Sep Temp	Dep fm Normal	Records Began
	Rank	Avg Temp			
Plant City	1st Warmest	86.3°	82.2°	+4.1°	Sep 1892
St Petersburg Area	1st Warmest (tie)	85.7°	82.5°	+3.2°	Aug 1914
Punta Gorda Area	1st Warmest	85.6°	82.1°	+3.5°	May 1914
Venice	2nd Warmest	84.6°	81.6°	+3.0°	May 1955
Winter Haven Area	2nd Warmest	84.5°	82.5°	+2.0°	Mar 1941
Fort Myers Area	2nd Warmest	84.4°	82.2°	+2.2°	Jan 1902
Tampa Area	2nd Warmest (tie)	84.0°	82.7°	+1.3°	Apr 1890
Lakeland Area	1st Warmest (tie)	83.8°	81.7°	+2.1°	Jan 1915
Wauchula	2nd Warmest	83.7°	80.8°	+2.9°	Jan 1933
Myakka River State Park	2nd Warmest	83.6°	81.4°	+2.2°	Mar 1956
Tarpon Springs	4th Warmest	83.3°	81.3°	+2.0°	Jan 1892
Bartow	4th Warmest	83.1°	80.7°	+2.4°	Jun 1892
Sarasota-Bradenton Area	4th Warmest	83.1°	82.2°	+0.9°	Jan 1911
Archbold Bio Stn	1st Warmest	83.0°	80.7°	+2.3°	Jan 1969
Inverness 3 SE	3rd Warmest	82.1°	78.9°	+3.2°	Jul 1948
Brooksville Area	3rd Warmest	82.0°	79.8°	+2.2°	Jan 1892
St. Leo	7th Warmest (tie)	81.9°	79.8°	+2.1°	Apr 1895
Chiefland 5 ESE	16th Warmest (tie)	80.1°	78.5°	+2.6°	Jul 1956

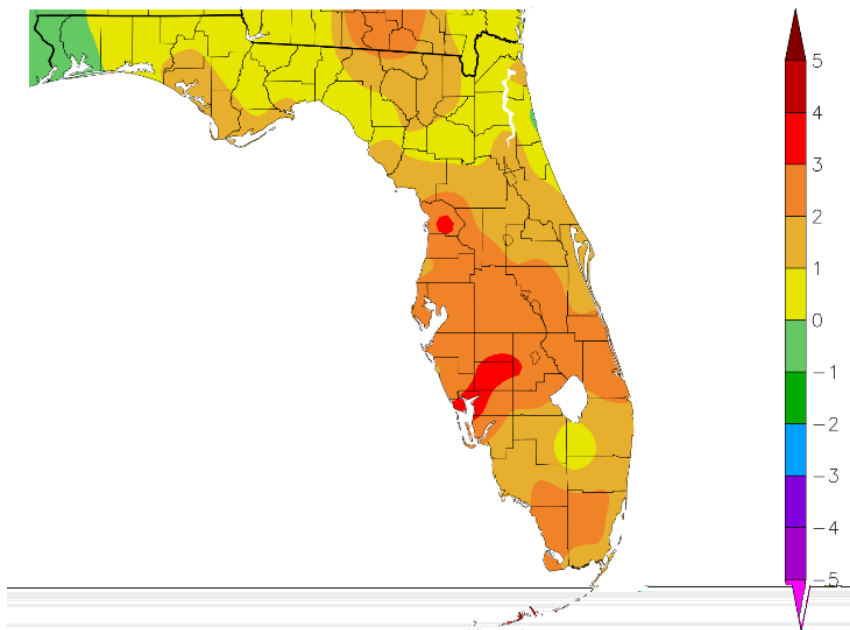
Temperature (F)

9/1/2024 - 9/30/2024



Departure from Normal Temperature (F)

9/1/2024 - 9/30/2024

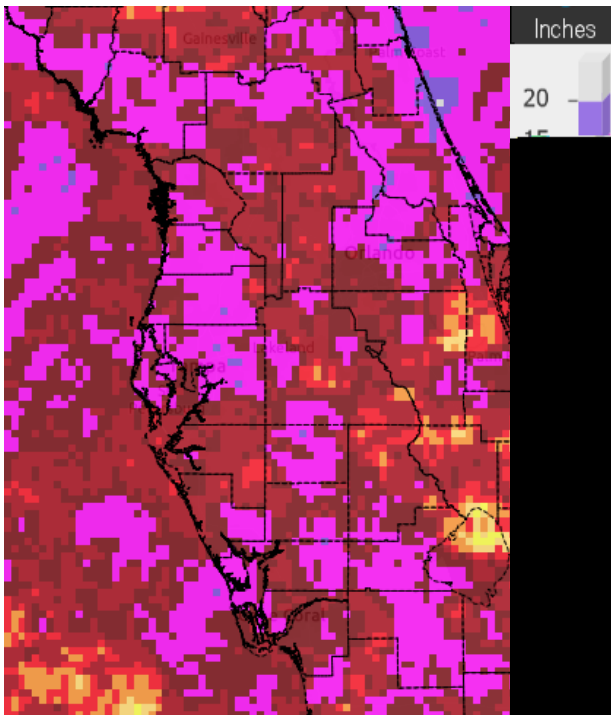


Graphics Source: NOAA Regional Climate Centers

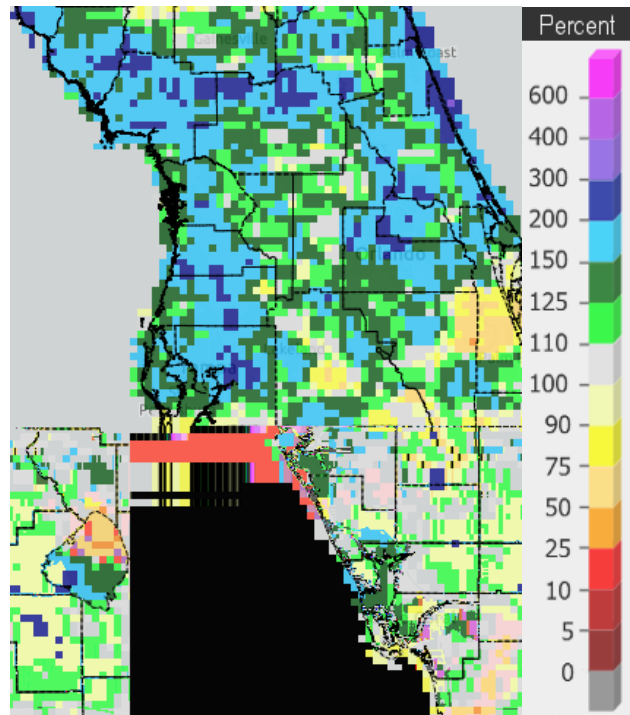
As for rainfall, parts of the region saw well above normal amounts (blue areas on image below right) while some others here and there are running below normal (yellow/orange areas on below right image).

SEPTEMBER RAINFALL (inches):

Location	September 2024		Normal Sep Rain	Dep fm Normal	Records Began
	Rank	Rain Total			
Wauchula	6th Wettest	13.65	6.32	+7.33	Jan 1933
Tampa Area	5th Wettest	13.35	6.09	+7.26	Apr 1890
Lakeland Area	9th Wettest	12.54	7.62	+4.92	Jan 1915
Fort Myers Area	29th Wettest	10.84	9.00	+1.84	Jan 1902
Brooksville Area	19th Wettest	10.41	5.79	+4.62	Jan 1892
Archbold Bio Stn	10th Wettest	10.03	7.17	+2.86	Jan 1969
Plant City	30th Wettest	9.37	6.99	+2.38	Sep 1892
Chiefland 5 ESE	23rd Wettest	7.97	5.82	+2.15	Jul 1956
St. Leo	43rd Wettest	7.94	6.63	+1.31	Apr 1895
Myakka River State Park	41st Driest	7.87	8.45	-0.58	Sep 1943
Tarpon Springs	54th Wettest	7.77	7.03	+0.74	Jan 1892
Sarasota-Bradenton Area	51st Wettest	7.50	6.00	+1.50	Jan 1911
Bartow	73rd Driest	7.25	7.31	-0.06	Jun 1892
Inverness 3 SE	27th Wettest	7.04	5.81	+1.23	Jul 1948
Punta Gorda Area	54th Wettest	6.87	6.87	0.00	May 1914
Venice	30th Driest	6.37	7.16	-0.79	May 1955
Winter Haven Area	38th Wettest	5.78	5.31	+0.47	Mar 1941



Rainfall September 2024



Percent of Normal

On the following pages are tables of the Top Ten Warmest, Coolest, Wettest, and Driest Septembers at some official NWS locations, which includes the average/total for this September where available and the 1991-2020 Normal (average) temperature and rainfall for the month of September.

CHIEFLAND 5 ESE (records began in July 1956):

Warmest Sep	Coolest Sep	Wettest Sep	Driest Sep
1 83.2 in 2018	1 75.8 in 1967	1 21.39 in 2004	1 0.43 in 2019
2 81.6 in 2019	2 76.1 in 1969	2 20.12 in 1988	2 0.86 in 1972
3 81.0 in 2016	76.1 in 1956	3 16.04 in 1964	3 1.06 in 1968
81.0 in 1970	4 76.3 in 2001	4 14.77 in 1998	4 1.10 in 2008
5 80.8 in 1986	5 76.7 in 2006	5 13.65 in 1983	5 1.23 in 1978
80.8 in 1980	6 76.9 in 1985	6 10.49 in 1979	6 1.74 in 1997
7 80.5 in 2020	7 77.0 in 1994	7 10.18 in 2017	7 1.97 in 1967
80.5 in 1988	77.0 in 1966	8 10.16 in 1989	8 1.99 in 2003
9 80.4 in 1998	9 77.6 in 2008	9 10.11 in 2000	9 2.15 in 1961
80.4 in 1959	77.6 in 1982	10 10.03 in 1966	10 2.20 in 1958
...		...	
16 80.1 in 2024		23 7.97 in 2024	
80.1 in 1978			

Normal Temperature for September at CHIF1 = 78.5°
 Normal Rainfall for September at CHIF1 = 5.82 in.

INVERNESS 3 SE (records began in July 1948):

Warmest Sep	Coolest Sep	Wettest Sep	Driest Sep
1 82.3 in 1954	1 76.8 in 1994	1 16.73 in 2016	1 0.76 in 1961
2 82.2 in 1958	2 77.0 in 2001	2 16.54 in 1950	2 1.07 in 2008
3 82.1 in 2024	3 77.1 in 1997	3 16.49 in 2017	3 1.21 in 1967
4 82.0 in 1970	4 77.3 in 1956	4 16.27 in 2004	4 1.25 in 1972
5 81.9 in 2019	5 77.7 in 1976	5 15.67 in 2001	5 1.74 in 1954
6 81.8 in 2020	6 77.9 in 1984	6 15.24 in 1960	6 1.76 in 2012
81.8 in 1974	7 78.0 in 1981	7 14.14 in 2021	7 1.80 in 1990
8 81.7 in 2010	8 78.1 in 2006	8 13.15 in 1979	8 1.82 in 2019
9 81.4 in 2009	78.1 in 1983	9 12.23 in 1982	9 1.96 in 1996
10 81.2 in 2018	10 78.4 in 1996	10 11.92 in 1964	10 2.04 in 2005
81.2 in 1977	
		27 7.04 in 2024	50 7.04 in 2024

Normal Temperature for September at INV1 = 78.9°
 Normal Rainfall for September at INV1 = 5.81 in.

BROOKSVILLE AREA (records began in January 1892):

Warmest Sep	Coolest Sep	Wettest Sep	Driest Sep
1 82.8 in 2018	1 77.2 in 2001	1 22.34 in 1950	1 0.48 in 1972
2 82.5 in 1926	2 77.5 in 1894	2 17.32 in 1979	2 0.90 in 2008
3 82.0 in 2024	3 77.6 in 1956	3 15.87 in 1894	3 1.39 in 1910
4 81.9 in 1906	4 77.7 in 1940	4 15.53 in 1912	4 1.69 in 1991
5 81.8 in 1958	5 77.8 in 1892	5 15.16 in 1935	5 1.74 in 1990
81.8 in 1925	6 77.9 in 1953	6 14.12 in 1988	6 1.90 in 1958
7 81.7 in 1930	7 78.0 in 1983	7 13.88 in 1947	7 2.02 in 1961
8 81.6 in 1911	8 78.1 in 1994	8 13.77 in 1938	8 2.07 in 2019
9 81.5 in 2019	78.1 in 1897	9 13.33 in 2016	9 2.09 in 1909
81.5 in 2002	10 78.2 in 2003	10 12.84 in 1960	10 2.29 in 2007
81.5 in 1991	78.2 in 1967	...	
	78.2 in 1893	19 10.41 in 2024	

Normal Temperature for September at BKV = 79.8°

Normal Rainfall for September at BKV = 5.79 in.

ST LEO (records began in April 1895):

Warmest Sep	Coolest Sep	Wettest Sep	Driest Sep
1 83.5 in 1925	1 76.3 in 1922	1 17.44 in 2004	1 0.75 in 1990
2 82.5 in 2002	2 77.1 in 1935	2 17.38 in 1929	2 1.17 in 1972
3 82.3 in 1900	77.1 in 1918	3 17.03 in 1950	3 1.21 in 1978
4 82.2 in 2009	4 77.4 in 1903	4 16.81 in 1912	4 1.76 in 1995
5 82.1 in 2018	5 77.9 in 1927	5 16.52 in 1960	5 1.97 in 2008
6 82.0 in 1944	77.9 in 1917	6 15.07 in 1935	6 2.05 in 1991
7 81.9 in 2024	77.9 in 1914	7 15.01 in 1933	7 2.10 in 1910
81.9 in 2008	8 78.0 in 1940	8 14.93 in 1949	8 2.11 in 2023
81.9 in 2007	9 78.1 in 1897	9 14.70 in 1953	9 2.23 in 2018
10 81.8 in 2005	10 78.3 in 1956	10 13.33 in 1982	10 2.24 in 1911
81.8 in 1958	78.3 in 1920
81.8 in 1951		43 7.94 in 2024	87 7.94 in 2024

Normal Temperature for September at STLF1 = 79.8°

Normal Rainfall for September at STLF1 = 6.63 in.

TARPON SPRINGS (records began in January 1892):

Warmest Sep	Coolest Sep	Wettest Sep	Driest Sep
1 84.2 in 2018	1 78.2 in 1894	1 18.13 in 1988	1 0.44 in 2005
2 84.0 in 1925	2 78.4 in 1967	2 15.80 in 2006	2 0.58 in 1972
3 83.5 in 1933	78.4 in 1899	3 15.54 in 1971	3 0.82 in 2008
4 83.3 in 2024	4 78.5 in 1956	4 15.39 in 1935	0.82 in 1921
5 83.2 in 1996	5 78.6 in 1940	5 15.28 in 2014	5 1.97 in 1910
6 83.0 in 1921	78.6 in 1916	6 14.27 in 1911	6 2.03 in 2023
7 82.9 in 1944	7 78.7 in 1900	7 13.21 in 1959	7 2.05 in 1967
8 82.7 in 2019	78.7 in 1896	8 13.12 in 1898	8 2.16 in 2007
82.7 in 1997	78.7 in 1895	9 12.79 in 1983	2.16 in 1952
10 82.6 in 1926	10 78.8 in 1983	10 12.70 in 1960	10 2.65 in 1919
	78.8 in 1918
	78.8 in 1903	54 7.77 in 2024	79 7.77 in 2024

Normal Temperature for September at TRPF1 = 81.3°

Normal Rainfall for September at TRPF1 = 7.03 in.

TAMPA AREA (records began in April 1890):

Warmest Sep	Coolest Sep	Wettest Sep	Driest Sep
1 85.8 in 2018	1 77.5 in 1897	1 18.93 in 1912	1 0.79 in 2005
2 84.0 in 2024	2 78.4 in 1914	2 17.28 in 1894	0.79 in 1910
84.0 in 2019	3 78.5 in 1956	3 13.98 in 1979	3 1.05 in 1937
4 83.8 in 2023	4 78.6 in 1981	4 13.56 in 1988	4 1.13 in 2010
83.8 in 2016	78.6 in 1940	5 13.35 in 2024	5 1.28 in 1972
6 83.4 in 2017	6 78.8 in 1903	6 13.29 in 1929	6 1.46 in 2019
7 83.2 in 2010	7 78.9 in 1922	7 13.04 in 1947	7 1.58 in 1921
83.2 in 1925	8 79.1 in 1913	8 12.84 in 1997	8 1.68 in 1904
9 83.1 in 2021	79.1 in 1894	9 12.40 in 2006	9 1.90 in 1927
83.1 in 1944	10 79.2 in 2001	10 12.29 in 2022	10 2.08 in 1915
	79.2 in 1967		
	79.2 in 1899		

Normal Temperature for September at TPA = 82.7°

Normal Rainfall for September at TPA = 6.09 in.

ST PETERSBURG (records began in August 1914):

Warmest Sep	Coolest Sep	Wettest Sep	Driest Sep
1 85.7 in 2024	1 79.0 in 1956	1 25.51 in 1988	1 1.09 in 2019
85.7 in 2005	2 79.6 in 1953	2 18.60 in 1953	1.09 in 2008
3 84.8 in 1925	3 79.7 in 2001	3 16.39 in 2001	3 1.40 in 1967
4 84.4 in 2018	79.7 in 1950	4 14.40 in 1929	4 1.48 in 1972
84.4 in 2010	79.7 in 1940	5 14.03 in 1962	5 1.61 in 2010
6 84.3 in 2019	6 80.0 in 1994	6 13.39 in 1928	6 1.84 in 1990
84.3 in 1933	80.0 in 1914	7 13.16 in 2022	7 1.90 in 2005
8 83.8 in 2017	8 80.2 in 1983	8 13.07 in 1933	8 2.13 in 1915
83.8 in 1970	9 80.4 in 1918	9 12.63 in 1997	9 2.30 in 1944
10 83.7 in 2023	10 80.5 in 1947	10 12.46 in 2004	10 2.35 in 1925
83.7 in 2008	80.5 in 1917		

Normal Temperature for September at SPG = 82.5°

Total Rainfall for September 2024 = Several Days Missing

Normal Rainfall for September at SPG = 6.66 in.

PLANT CITY (records began in September 1892):

Warmest Sep	Coolest Sep	Wettest Sep	Driest Sep
1 86.3 in 2024	1 77.7 in 1940	1 18.43 in 1894	1 0.71 in 1972
2 84.9 in 2018	2 77.9 in 1907	2 18.21 in 2004	2 0.75 in 1909
3 84.0 in 2023	3 78.0 in 1932	3 17.09 in 1947	3 0.92 in 2019
4 83.8 in 2020	78.0 in 1918	4 16.77 in 1998	4 0.97 in 1915
83.8 in 2019	5 78.4 in 1953	5 15.42 in 1988	5 1.12 in 1991
6 83.1 in 2022	78.4 in 1931	6 15.18 in 2022	6 1.26 in 1961
7 83.0 in 2021	7 78.6 in 1910	7 15.12 in 1960	7 1.27 in 1937
8 82.9 in 2016	78.6 in 1909	8 14.75 in 1933	8 1.47 in 2023
9 81.8 in 1958	9 78.7 in 1956	9 14.20 in 1979	9 1.50 in 1911
81.8 in 1951	78.7 in 1913	10 13.38 in 1912	10 1.64 in 1990
	
		30 9.37 in 2024	96 9.37 in 2024

Normal Temperature for September at PLCF1 = 82.2°

Normal Rainfall for September at PLCF1 = 6.99 in.

LAKELAND AREA (records began in January 1915):

Warmest Sep	Coolest Sep	Wettest Sep	Driest Sep
1 83.8 in 2024	1 78.0 in 1940	1 19.67 in 2004	1 0.31 in 1921
83.8 in 2018	2 78.6 in 2001	2 15.52 in 1929	2 0.81 in 1972
3 83.0 in 1987	78.6 in 1947	3 15.47 in 1998	3 0.85 in 2019
4 82.9 in 2023	4 78.7 in 1967	4 15.18 in 1989	4 1.26 in 1944
82.9 in 2016	78.7 in 1956	5 14.03 in 2022	5 1.45 in 2008
82.9 in 1989	6 79.0 in 1953	6 13.75 in 1933	6 1.55 in 1961
7 82.8 in 1998	7 79.1 in 1928	7 13.67 in 2001	7 1.59 in 2023
8 82.7 in 2020	79.1 in 1918	8 12.99 in 2014	8 2.42 in 1927
82.7 in 2019	9 79.2 in 2006	9 12.54 in 2024	9 2.57 in 1925
82.7 in 2010	79.2 in 1950	10 12.33 in 1979	10 2.59 in 1937
82.7 in 1990			

Normal Temperature for September at LLDF1 = 81.7°
 Normal Rainfall for September at LLDF1 = 7.62 in.

WINTER HAVEN AREA (records began in March 1941):

Warmest Sep	Coolest Sep	Wettest Sep	Driest Sep
1 85.0 in 2018	1 79.2 in 1976	1 17.26 in 1960	1 1.08 in 2008
2 84.5 in 2024	79.2 in 1968	2 14.79 in 2001	2 1.10 in 1972
3 84.3 in 2019	79.2 in 1956	3 13.46 in 1948	3 1.22 in 1961
4 84.0 in 1989	4 79.4 in 1981	4 12.84 in 2014	4 1.61 in 2005
5 83.2 in 1991	79.4 in 1962	5 12.83 in 1947	5 1.96 in 2015
6 83.1 in 2020	6 79.6 in 2001	6 12.47 in 1979	1.96 in 1952
7 82.9 in 2016	7 79.7 in 1983	7 11.32 in 1987	7 2.16 in 1990
8 82.6 in 2002	79.7 in 1959	8 10.54 in 2020	8 2.33 in 2009
82.6 in 1951	9 79.8 in 1967	9 10.51 in 1998	9 2.35 in 2006
10 82.5 in 2010	79.8 in 1964	10.51 in 1920	10 2.47 in 1944
82.5 in 2007	79.8 in 1947
82.5 in 1995		38 5.78 in 2024	45 5.78 in 2024

Normal Temperature for September at GIF = 82.5°
 Normal Rainfall for September at GIF = 5.31 in.

BARTOW (records began in June 1892):

Warmest Sep	Coolest Sep	Wettest Sep	Driest Sep
1 83.5 in 2014	1 77.0 in 1894	1 25.59 in 2022	1 1.04 in 1972
2 83.3 in 1925	2 77.7 in 1913	2 17.24 in 2004	2 1.73 in 2005
3 83.2 in 1988	3 77.8 in 1914	3 16.91 in 1894	3 1.76 in 1904
4 83.1 in 2024	4 78.1 in 1918	4 16.61 in 1928	4 2.35 in 1942
5 82.8 in 2018	5 78.5 in 1940	5 15.96 in 1998	5 2.41 in 1961
82.8 in 2002	78.5 in 1916	6 15.77 in 1933	6 2.47 in 1937
7 82.7 in 1987	7 78.6 in 1895	7 15.59 in 1960	7 2.51 in 1991
8 82.6 in 1951	78.6 in 1893	8 15.06 in 1979	8 2.52 in 1910
82.6 in 1949	9 78.9 in 1922	9 14.64 in 1982	9 2.57 in 1990
10 82.5 in 1958	10 79.0 in 1975	10 14.25 in 1947	10 2.87 in 2019
82.5 in 1944	79.0 in 1967
	79.0 in 1897	57 7.25 in 2024	73 7.25 in 2024
	79.0 in 1892		

Normal Temperature for September at BARF1 = 80.7°

Normal Rainfall for September at BARF1 = 7.31 in.

SARASOTA-BRADENTON AREA (records began in January 1911):

Warmest Sep	Coolest Sep	Wettest Sep	Driest Sep
1 84.8 in 2019	1 78.2 in 1927	1 21.16 in 1962	1 1.07 in 2005
2 83.9 in 2016	2 78.4 in 1931	2 19.14 in 1953	2 1.17 in 2010
3 83.2 in 2020	3 78.6 in 1916	3 17.31 in 1928	3 1.88 in 2023
4 83.1 in 2024	4 78.7 in 1940	4 16.92 in 1929	4 1.94 in 2012
5 82.8 in 2023	5 78.9 in 1956	5 16.65 in 1912	5 1.99 in 2019
6 82.7 in 2007	6 79.0 in 2001	6 15.86 in 1926	6 2.02 in 1945
7 82.6 in 2018	79.0 in 1984	7 15.65 in 1960	7 2.27 in 1921
8 82.5 in 1951	79.0 in 1922	8 15.57 in 1988	8 2.33 in 1984
82.5 in 1925	9 79.1 in 1976	9 14.54 in 2022	9 2.37 in 1944
10 82.3 in 2010	79.1 in 1935	10 14.50 in 1979	10 2.44 in 1972
82.3 in 2009	
82.3 in 2005		51 7.50 in 2024	64 7.50 in 2024
82.3 in 1989			

Normal Temperature for September at SRQ = 82.2°

Normal Rainfall for September at SRQ = 6.00 in.

VENICE (records began in May 1955):

Warmest Sep	Coolest Sep	Wettest Sep	Driest Sep
1 85.4 in 1989	1 78.1 in 1968	1 16.20 in 1960	1 1.39 in 2019
2 84.6 in 2024	2 78.7 in 1956	2 14.77 in 1962	2 1.72 in 1961
3 84.5 in 2009	3 78.9 in 1976	3 14.23 in 1983	3 1.84 in 1981
4 84.1 in 2010	4 79.8 in 1967	4 13.10 in 2013	4 1.93 in 2005
5 83.6 in 2011	5 79.9 in 2001	5 12.49 in 2003	5 2.22 in 1993
6 83.4 in 2019	79.9 in 1984	6 12.31 in 1968	6 2.61 in 1986
7 83.2 in 2012	7 80.1 in 1987	7 12.22 in 2014	7 3.25 in 2011
8 83.1 in 2018	8 80.2 in 1961	8 11.96 in 1994	8 3.43 in 1958
9 83.0 in 2023	80.2 in 1960	9 11.95 in 1995	9 3.58 in 2023
83.0 in 1998	10 80.3 in 1985	10 11.44 in 1975	10 3.69 in 1965
	80.3 in 1983
		41 6.37 in 2024	30 6.37 in 2024

Normal Temperature for September at VNCF1 = 81.6°

Normal Rainfall for September at VNCF1 = 7.16 in.

MYAKKA RIVER STATE PARK (Temperature records began in March 1956
and Rainfall records began in Sep 1943):

Warmest Sep	Coolest Sep	Wettest Sep	Driest Sep
1 83.8 in 2018	1 78.9 in 2001	1 30.78 in 2022	1 1.48 in 2005
2 83.6 in 2024	78.9 in 1959	2 22.49 in 1962	2 1.66 in 2019
3 82.8 in 2016	3 79.4 in 1962	3 21.08 in 1979	3 2.29 in 1972
4 82.6 in 2019	4 79.7 in 1976	4 18.10 in 2001	4 2.36 in 1961
82.6 in 2009	79.7 in 1963	5 14.65 in 2014	5 2.40 in 1986
6 82.5 in 2010	6 80.1 in 1994	6 14.04 in 1960	6 2.65 in 2008
82.5 in 1991	80.1 in 1971	7 12.82 in 1957	7 2.74 in 1990
8 82.3 in 2015	80.1 in 1968	8 12.47 in 2018	8 3.49 in 2023
82.3 in 1998	9 80.3 in 1984	9 12.12 in 1995	9 3.76 in 1991
82.3 in 1990	80.3 in 1972	10 11.98 in 1982	10 4.19 in 1984
	80.3 in 1969
		40 7.87 in 2024	41 7.87 in 2024

Normal Temperature for September at MKCF1 = 81.4°

Normal Rainfall for September at MKCF1 = 8.45 in.

WAUCHULA (records began in January 1933):

Warmest Sep	Coolest Sep	Wettest Sep	Driest Sep
1 84.5 in 2009	1 78.1 in 1956	1 29.07 in 2022	1 1.19 in 1961
2 83.7 in 2024	2 78.4 in 2001	2 18.06 in 1947	2 1.44 in 1972
3 83.4 in 2008	78.4 in 1953	3 14.38 in 1953	3 1.54 in 2019
4 82.6 in 2018	4 78.7 in 1940	4 13.91 in 1948	4 1.61 in 1933
5 82.5 in 2007	5 78.8 in 2012	5 13.83 in 1960	5 1.91 in 2008
6 82.4 in 1989	6 78.9 in 2013	6 13.65 in 2024	6 2.00 in 1980
7 82.2 in 1988	7 79.1 in 1984	7 12.27 in 2023	7 2.21 in 1991
82.2 in 1933	8 79.2 in 1982	8 11.77 in 2017	8 2.70 in 1978
9 82.0 in 2017	79.2 in 1947	9 11.56 in 1979	9 3.26 in 1976
82.0 in 1974	10 79.3 in 1981	10 11.41 in 1962	10 3.35 in 1987
	79.3 in 1968		

Normal Temperature for September at WAUF1 = 80.8°

Normal Rainfall for September at WAUF1 = 6.32 in.

ARCHBOLD BIO STN (records began in January 1969):

Warmest Sep	Coolest Sep	Wettest Sep	Driest Sep
1 83.0 in 2024	1 78.3 in 1994	1 16.38 in 2022	1 0.70 in 1996
2 82.3 in 2016	2 78.5 in 2001	2 14.54 in 2017	2 2.04 in 2019
3 82.0 in 2017	78.5 in 1984	3 14.15 in 1979	3 2.37 in 1983
4 81.8 in 2015	4 78.6 in 1982	4 12.78 in 2016	4 2.41 in 1988
5 81.7 in 2018	5 79.0 in 1976	5 12.54 in 2004	5 2.92 in 1980
6 81.3 in 2020	6 79.3 in 2012	6 11.55 in 2001	6 3.22 in 2008
7 81.2 in 2023	79.3 in 1999	7 11.47 in 2014	7 3.30 in 2005
81.2 in 1974	79.3 in 1997	8 10.69 in 2012	8 3.58 in 2011
9 81.1 in 2019	79.3 in 1985	9 10.65 in 1982	9 3.67 in 2018
81.1 in 2002	79.3 in 1981	10 10.03 in 2024	10 3.79 in 2006
	79.3 in 1971		

Normal Temperature for September at ACHF1 = 80.7°

Normal Rainfall for September at ACHF1 = 7.17 in.

PUNTA GORDA AREA (records began in May 1914):

Warmest Sep	Coolest Sep	Wettest Sep	Driest Sep
1 85.6 in 2024	1 78.5 in 1940	1 17.09 in 1959	1 0.93 in 2019
2 84.6 in 2018	2 78.8 in 2001	2 16.54 in 1929	2 1.23 in 1978
3 84.2 in 1951	3 79.1 in 1969	3 16.47 in 1962	3 2.94 in 1952
4 83.9 in 2023	4 79.2 in 1922	4 16.42 in 2022	4 3.33 in 1990
5 83.0 in 1988	5 79.4 in 1917	5 16.13 in 1947	5 3.36 in 1991
6 82.9 in 2009	79.4 in 1914	6 14.86 in 1935	6 3.44 in 1987
7 82.8 in 2020	7 79.5 in 1956	7 14.17 in 2001	7 3.71 in 1972
82.8 in 1986	79.5 in 1929	8 14.15 in 1928	8 3.74 in 1986
9 82.7 in 2017	9 79.9 in 1938	9 14.03 in 1979	9 3.76 in 1965
82.7 in 1933	79.9 in 1928	10 13.77 in 1926	10 3.81 in 1927
	
		54 6.87 in 2024	57 6.87 in 2024

Normal Temperature for September at PGD = 82.1°
 Normal Rainfall for September at PGD = 6.87 in.

FORT MYERS AREA (records began in January 1902):

Warmest Sep	Coolest Sep	Wettest Sep	Driest Sep
1 84.7 in 1980	1 78.5 in 1917	1 17.35 in 1922	1 1.93 in 1988
2 84.4 in 2024	2 78.7 in 1908	2 17.21 in 2003	2 2.33 in 1972
3 84.0 in 1996	78.7 in 1903	3 16.60 in 1969	3 2.80 in 1961
4 83.7 in 2023	4 78.9 in 1922	4 16.45 in 2022	4 2.86 in 2019
83.7 in 1988	78.9 in 1909	5 16.32 in 1947	5 3.04 in 1937
6 83.6 in 2019	6 79.0 in 1913	6 15.58 in 1953	6 3.07 in 1904
83.6 in 1997	7 79.1 in 1902	7 15.44 in 1929	7 3.24 in 1925
8 83.5 in 1986	8 79.2 in 1910	8 14.86 in 2008	8 3.39 in 1906
83.5 in 1979	9 79.3 in 1976	9 14.54 in 1962	9 3.48 in 1954
10 83.4 in 1990	79.3 in 1918	10 14.49 in 1935	10 3.56 in 1944
	79.3 in 1904		3.56 in 1936
		...	
		29 10.84 in 2024	

Normal Temperature for September at FMY = 82.2°
 Normal Rainfall for September at FMY = 9.00 in.

For more Climate information visit our web site at the following link:
<https://www.weather.gov/tampabay> and then go to the Climate and Past Weather drop down menu above the graphical forecast images.