



River Forecasting for West Central Florida

Eric Oglesby
Service Hydrologist
National Weather Service
Tampa Bay area – Ruskin FL

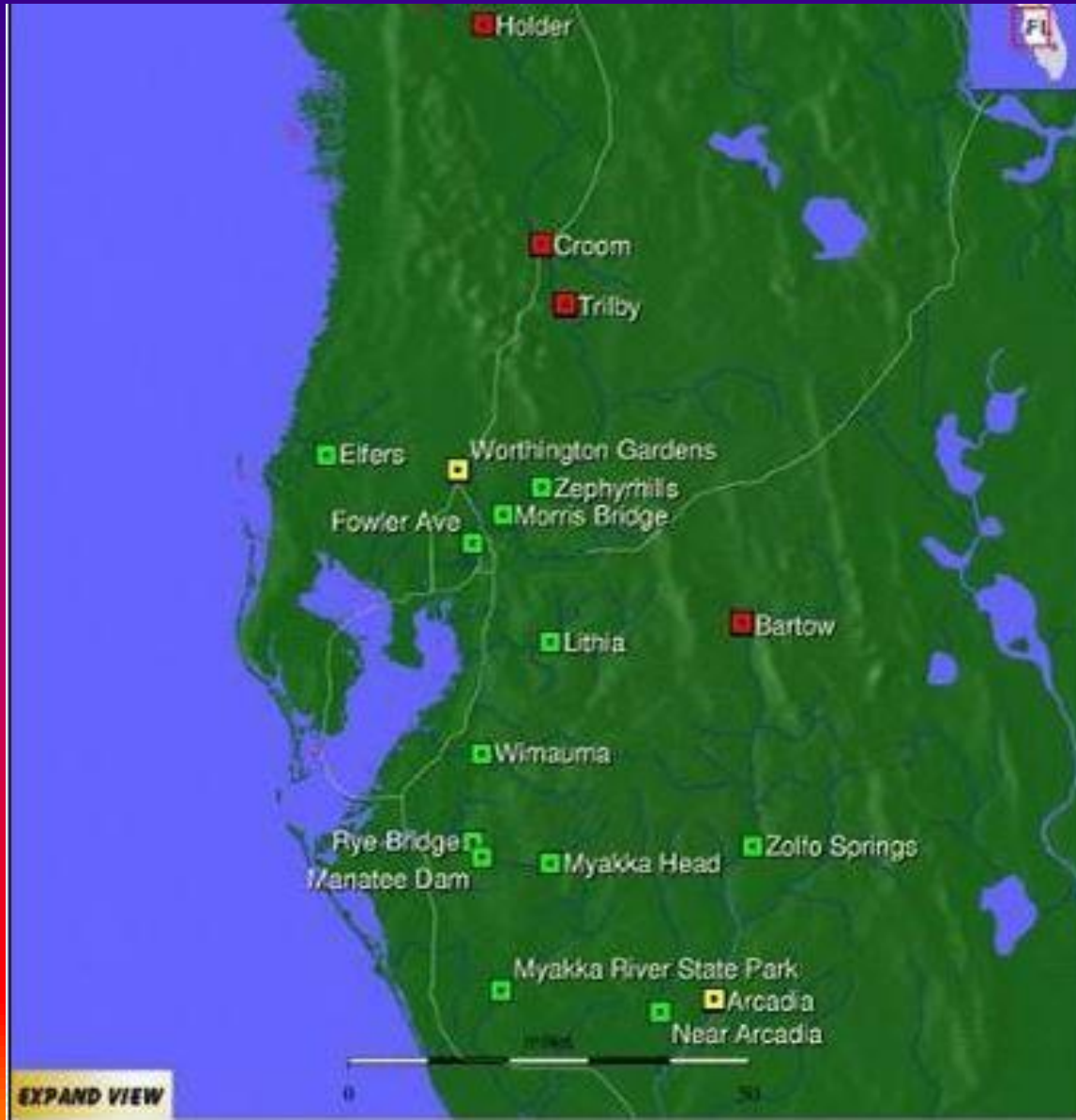


Rivers of West Central Florida

- **10 Rivers/Creeks with 21 forecast points across the TBW Hydrologic Service Area.**
- **Withlacoochee, Anclote, Cypress Creek, Hillsborough, Alafia, Little Manatee, Manatee, Myakka, Peace, and Horse Creek**



River Forecast Point Locations





River Forecasting

- **Collaborative process between the local forecast office and the Southeast River Forecast Center (SERFC).**
- **River models run routinely at the SERFC twice per day (morning and evening)...more frequently if needed.**
- **River forecast sent to the local office. Based on local expertise, can call to discuss any potential changes.**
- **Official river forecast is then issued.**
- **River Flood warnings/statements issued by the local office.**



River Forecasting

- **Florida peninsula is unique in that river forecasts are only issued if a river is expected to get near flood or above flood stage.**
- **SERFC webpage:
www.weather.gov/serfc**

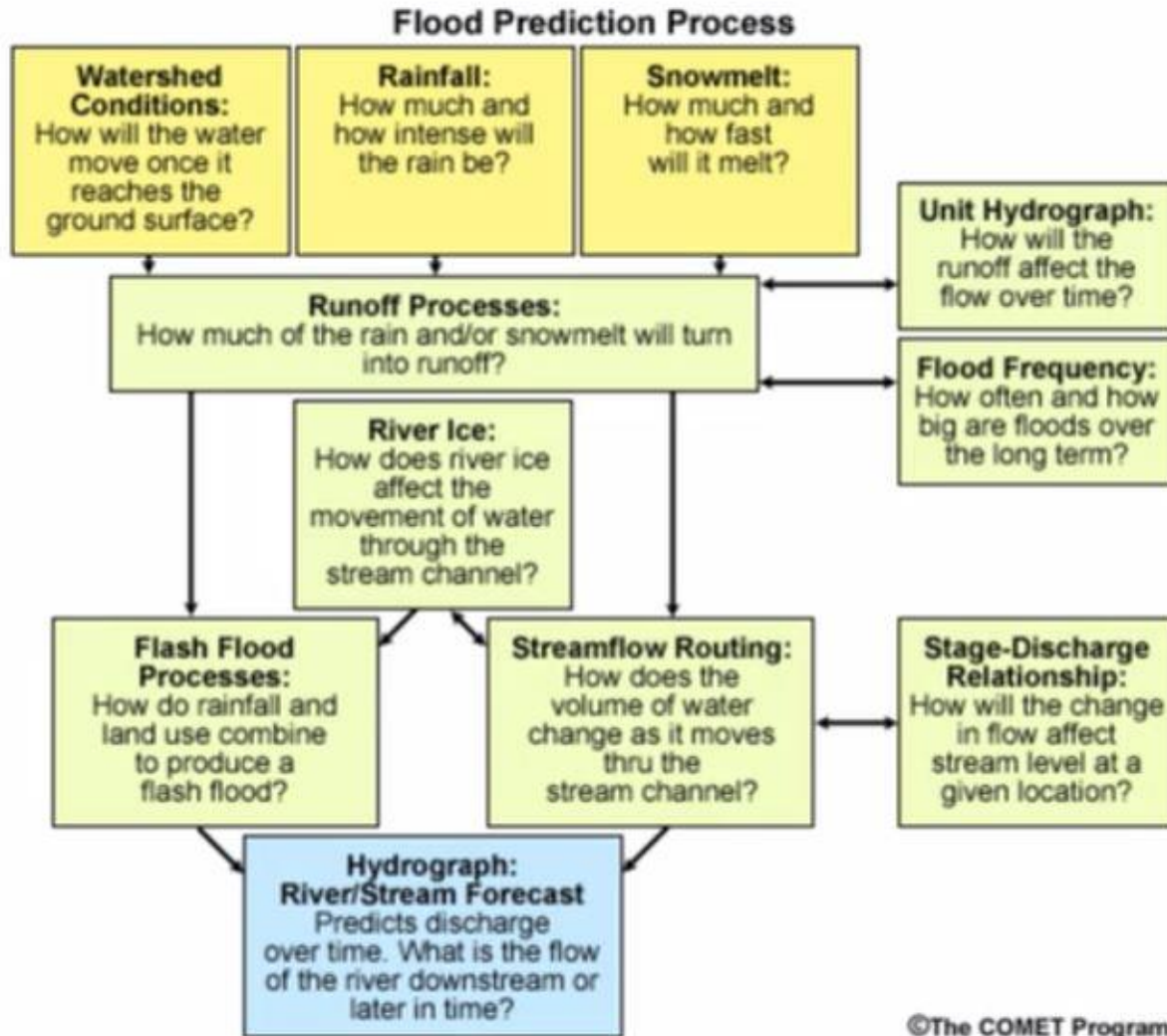


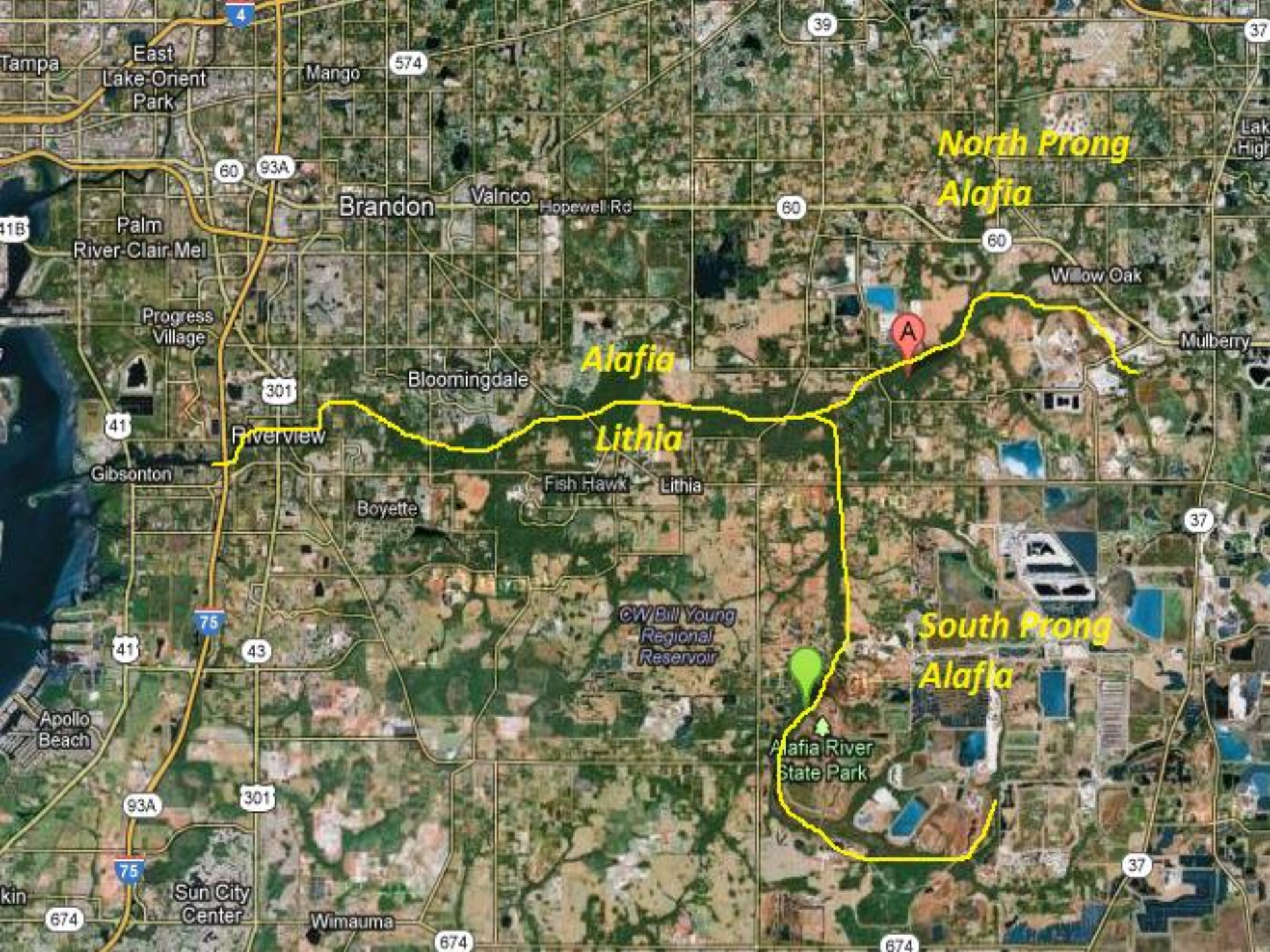
River Forecasting

- **Multiple Factors go into river forecasts.**
- **What are the antecedent conditions?**
- **How much rain has fallen since the last forecast?**
- **How much rain is expected in each river basin over the next 12 to 48 hours?**
- **Will the rain fall over a short or extended period of time?**
- **Ultimate Goal: Determine how much water will runoff into the river and how quickly.**



River Forecasting





**North Prong
Alafia**

**Alafia
Lithia**

**South Prong
Alafia**

Alafia River
State Park

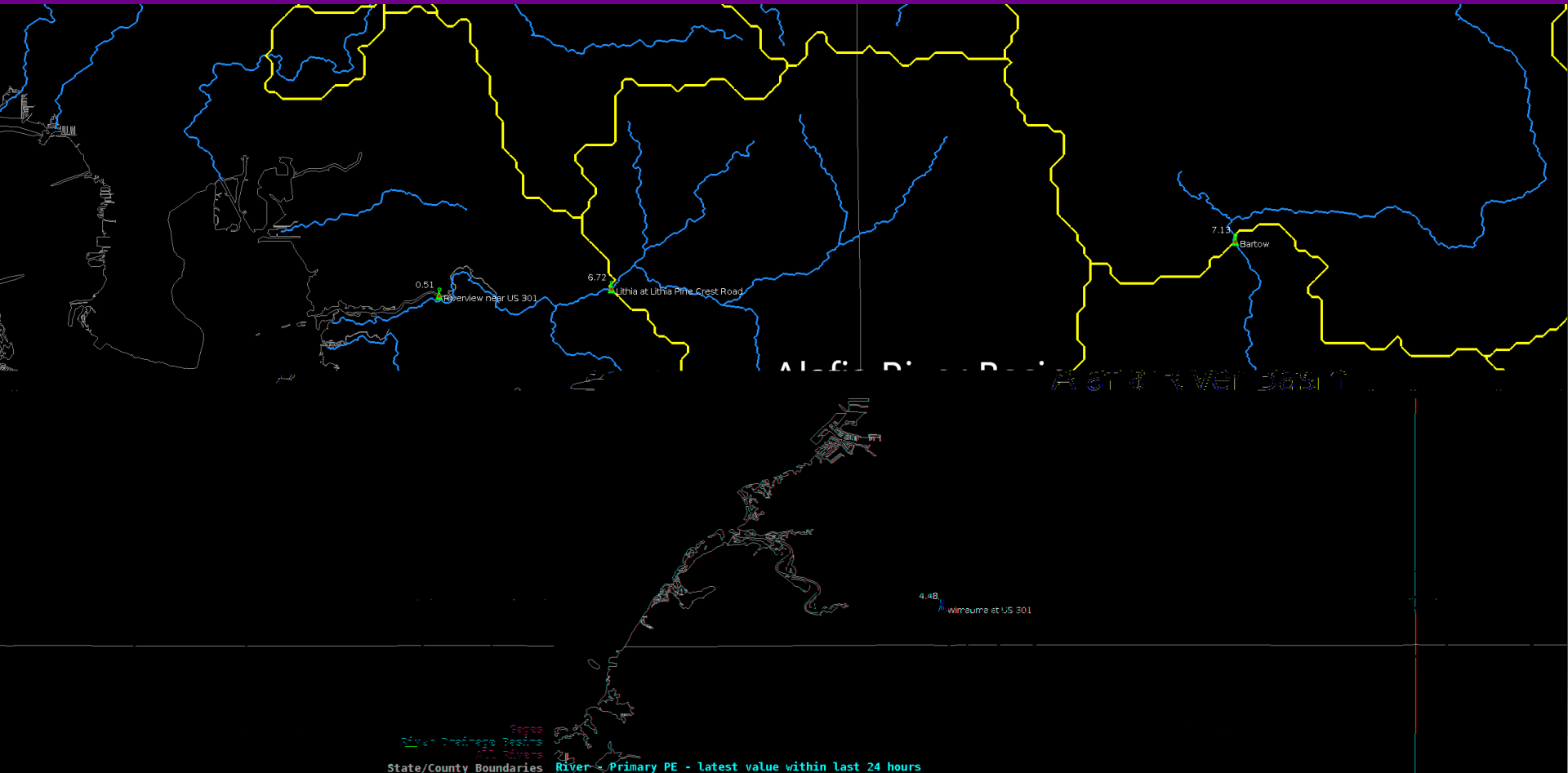
CW/ Bill Young
Regional
Reservoir



Tampa East Lake-Orient Park Mango Brandon Valrico Hopewell Rd Willow Oak Mulberry
Palm River-Clair-Mel Progress Village Bloomingdale Riverview Fish Hawk Lithia Boyette
Gibsonton Apollo Beach Sun City Center Wimauma
4 574 60 93A 39 37 60 60 301 41 41 75 43 93A 301 75 674 674 37 37 674



Alafia River Basin





Alafia River


- Flood plain is narrow and heavily overgrown.
- Slope is a little over a foot per mile
 - North prong is 7 feet/mile
 - South prong is 4.5 feet/mile

Fast Responding River

- The last 8 miles of the river the channel widens increasing to 500-1000 feet near the mouth. This entire area is tidal.



NWS Homepage: www.weather.gov/tbw



NATIONAL WEATHER SERVICE

NATIONAL OCEANIC AND ATMOSPHERIC ADMINISTRATION

HOME FORECAST PAST WEATHER SAFETY INFORMATION EDUCATION NEWS SEARCH ABOUT


Local forecast by "City, St" or ZIP code

[Location Help](#)

News Headlines

- [Brief Review of Notable Weather and Climate Data for 2020](#)
- [Virtual SKYWARN Spotter Training March 4 at 6pm. Click Here to Register.](#)

MY FORECAST
Tampa FL



NWS Forecast Office Tampa Bay Area, FL
[Weather.gov](#) > Tampa Bay Area, FL

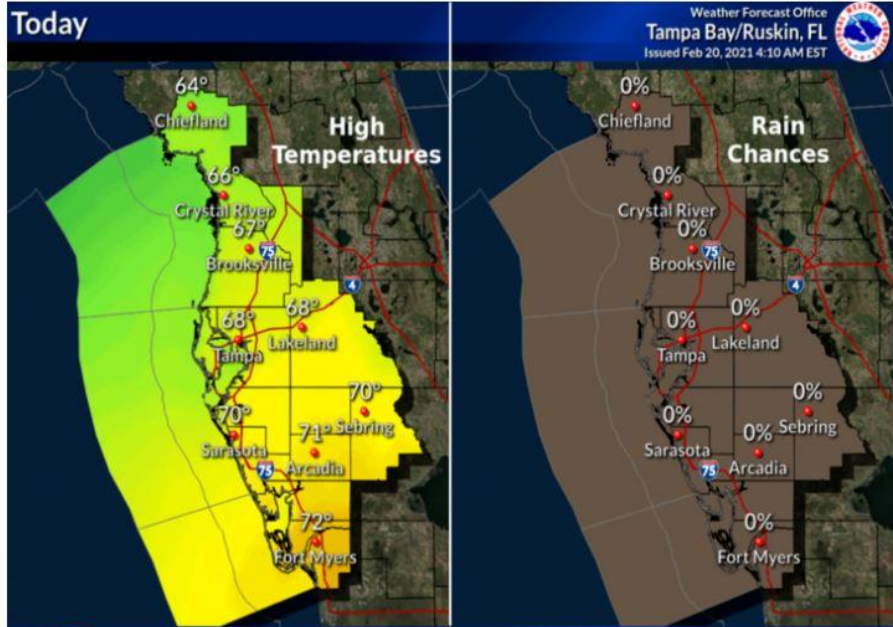
Tampa Bay Area, FL
Weather Forecast Office

[Current Hazards](#) [Current Conditions](#) [Radar](#) [Forecasts](#) [Rivers and Lakes](#) [Climate and Past Weather](#) [Local Programs](#)

Today Tonight Tomorrow Climate Today

Today

Weather Forecast Office
Tampa Bay/Ruskin, FL
Issued Feb 20, 2021 4:10 AM EST



High Temperatures

Location	Temperature
Chiefland	64°
Crystal River	66°
Brooksville	67°
Tampa	68°
Lakeland	68°
Sarasota	70°
Arcadia	71°
Fort Myers	72°
Sebring	70°

Rain Chances

Location	Rain Chance
Chiefland	0%
Crystal River	0%
Brooksville	0%
Tampa	0%
Lakeland	0%
Sarasota	0%
Arcadia	0%
Fort Myers	0%
Sebring	0%

[@NWSTampaBay](#) weather.gov/tampabay

Mostly sunny and cooler. Highs in lower to mid 60s north, and upper 60s to lower 70s central and south.



AHPS Page

National Weather Service
Advanced Hydrologic Prediction Service

Home News Organization

National Observations WFO Observations

Weather Forecast Office Tampa Bay Area, FL Southeast River Forecast Center

River Observations River Forecasts Long-Range Flood Risk Precipitation Download

Auto Refresh: OFF Print this map Permalink BOOKMARK

219 total gauges 14 gauges in flood

Switch Basemap Reset View

Forecast available
Probability and forecasts available
Observations only available
Major Flooding
Moderate Flooding
Minor Flooding
Near Flood Stage
No Flooding
Observations Are Not Current
Out of Service
Flood Category Not Defined
At or Below Low Water Threshold

Last map update:
02/20/2021 at 06:42:57 pm EST
02/20/2021 at 23:42:57 UTC
What is UTC time?
Map Help
Disclaimer

WHEN FLOODED TURN AROUND DON'T DROWN

FLOODSMART.GOV
USA.gov

USGS science for a changing world
POWERED BY esri
Esri, HERE, Garmin, FAO, NOAA, USGS, EPA, NPS

Map Overlays



AHPS Page

National Weather Service

Advanced Hydrologic Prediction Service

Home

News

National Observations WFO Observations Hydrograph

Weather Forecast Office Tampa Bay Area, FL

Southeast River Forecast Center

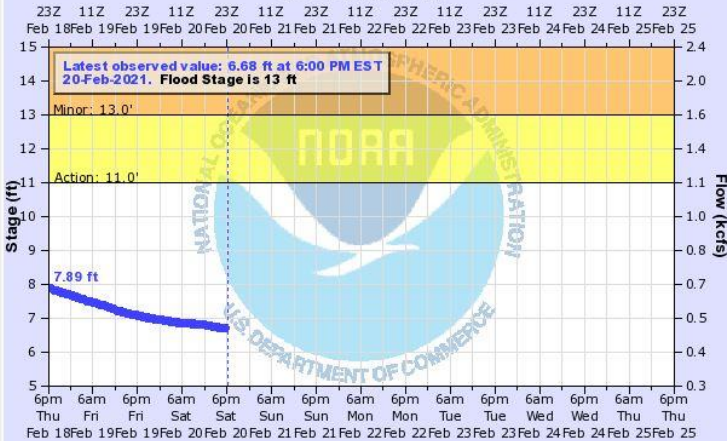
Hydrograph River at a Glance Download Inundation Mapping Probability Information

Auto Refresh: OFF



ALAFIA RIVER (FL) AT LITHIA PINECREST ROAD AT LITHIA

Universal Time (UTC)



Site Time (EST) Graph Created (6:38PM Feb 20, 2021) Observed

LITF1(plotting HGIRG) "Gage 0" Datum: 6.04' Observations courtesy of US Geological Survey

- Printable Image
- About this graph
- Tabular Data (UTC)
- Tabular Data (EST)
- XML**
- RSS**
- Datum: Not Available
- Metadata

NOTE: River forecasts for this location take into account past precipitation and the precipitation amounts expected approximately 48 hours into the future from the forecast issuance time.

NOTE: Forecasts for the Alafia River (FL) at Lithia Pinecrest Road at Lithia are issued as needed during times of high water, but are not routinely available.

Default Hydrograph

Return to Area Map

- Flood Categories (in feet)**
- Major Flood Stage: 19
 - Moderate Flood Stage: 16
 - Flood Stage: 13
 - Action Stage: 11

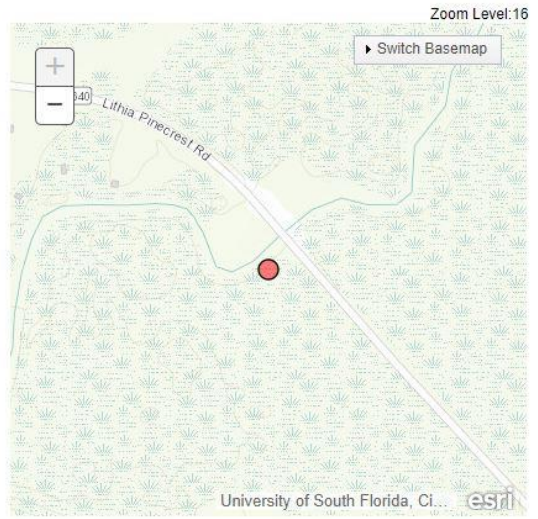
- Historic Crests**
- 28.50 ft on 09/07/1933
 - 23.98 ft on 09/12/1960
 - 23.24 ft on 09/20/1947
 - 22.83 ft on 07/31/1960
 - 22.79 ft on 09/12/2017
- Show More Historic Crests

(P): Preliminary values subject to further review.

- Recent Crests**
- 15.54 ft on 11/14/2020 (P)
 - 13.86 ft on 09/30/2020 (P)
 - 14.24 ft on 09/04/2020 (P)
 - 14.75 ft on 08/16/2019
 - 13.16 ft on 08/11/2019
- Show More Recent Crests

(P): Preliminary values subject to further review.

- Low Water Records**
- 1.95 ft on 06/06/1945



Gauge Location Disclaimer Latitude/Longitude Disclaimer: The gauge location shown in the above map is the approximate location based on the latitude/longitude coordinates provided to the NWS by the gauge owner.

Flood Impacts & Photos

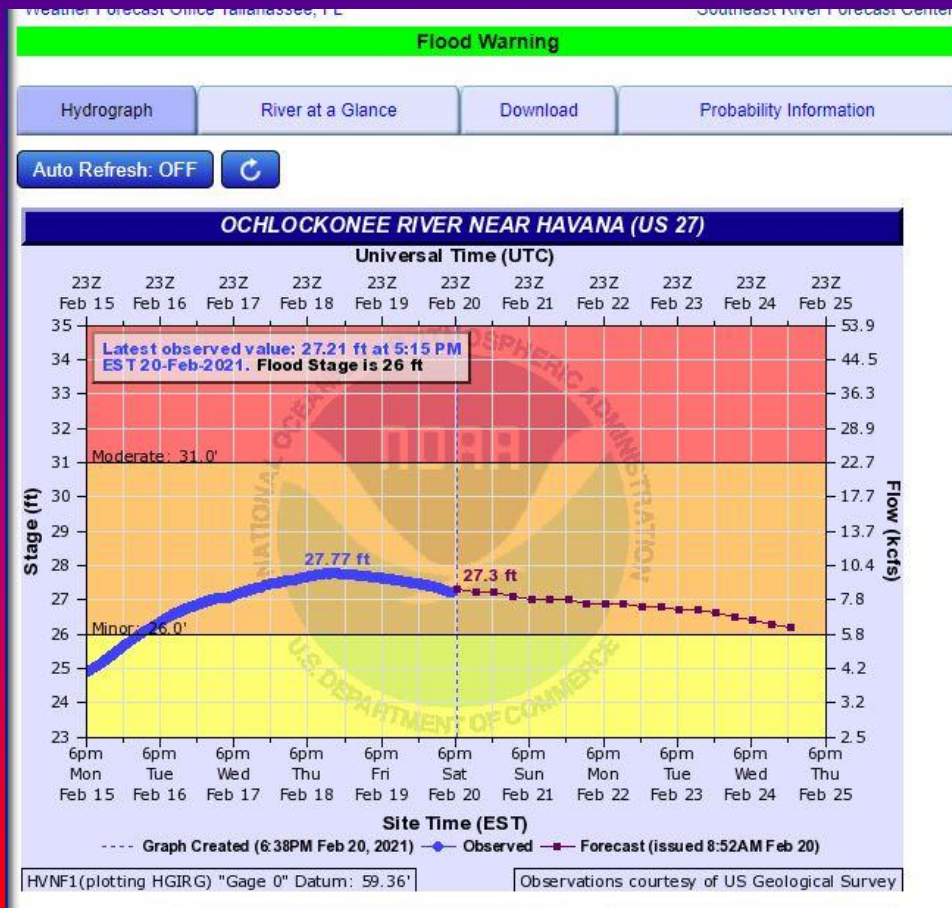
If you notice any errors in the below information, please contact our Webmaster

- 29.5 Height of the County Road 640 roadbed.
- 27 Water covers County Road 640 Lithia area.
- 15 Additional residences downstream of County Road 640 bridge begin flooding.
- 13 River Drive and Squirrel Run Way downstream of County Road 640 are completely covered by water. One home begins to flood.
- 12 Water begins to affect River Drive and Squirrel Run Way downstream of County Road 640.

About This Location



AHPS Page





River Forecasting for West Central Florida

- Forecast Process
- NWS AHPS Page