



NOAA Technical Memorandum NWS WR-204

**PRELIMINARY ANALYSIS OF CLOUD-TO-GROUND LIGHTNING
IN THE VICINITY OF THE NEVADA TEST SITE**

**Carven Scott
National Weather Service Nuclear Support Office
Las Vegas, Nevada
November 1988**

**U.S. DEPARTMENT OF
COMMERCE**

National Oceanic and
Atmospheric Administration

National Weather
Service



NOAA TECHNICAL MEMORANDA
National Weather Service, Western Region Subseries

The National Weather Service (NWS) Western Region (WR) Subseries provides an informal medium for the documentation and quick dissemination of results not appropriate, or not yet ready, for formal publication. The series is used to report on work in progress, to describe technical procedures and practices, or to relate progress to a limited audience. These Technical Memoranda will report on investigations devoted primarily to regional and local problems of interest mainly to personnel, and hence will not be widely distributed.

Papers 1 to 25 are in the former series, ESSA Technical Memoranda, Western Region Technical Memoranda (WRTM); papers 24 to 59 are in the former series, ESSA Technical Memoranda, Weather Bureau Technical Memoranda (WBTM). Beginning with 60, the papers are part of the series, NOAA Technical Memoranda NWS. Out-of-print memoranda are not listed.

Papers 2 to 22, except for 5 (revised edition), are available from the National Weather Service Western Region, Scientific Services Division, P.O. Box 11188, Federal Building, 125 South State Street, Salt Lake City, Utah 84147. Paper 5 (revised edition), and all others beginning with 25 are available from the National Technical Information Service, U.S. Department of Commerce, Sills Building, 5285 Port Royal Road, Springfield, Virginia 22161. Prices vary for all paper copies; microfiche are \$3.50. Order by accession number shown in parentheses at end of each entry.

ESSA Technical Memoranda (WRTM)

- 2 Climatological Precipitation Probabilities. Compiled by Lucianne Miller, December 1965.
- 3 Western Region Pre- and Post-FP-3 Program, December 1, 1965, to February 20, 1966. Edward D. Diemer, March 1966.
- 5 Station Descriptions of Local Effects on Synoptic Weather Patterns. Philip Williams, Jr., April 1966 (Revised November 1967, October 1969). (PB-17800)
- 8 Interpreting the RAREP. Herbert P. Benner, May 1966 (Revised January 1967).
- 11 Some Electrical Processes in the Atmosphere. J. Latham, June 1966.
- 17 A Digitalized Summary of Radar Echoes within 100 Miles of Sacramento, California. J. A. Youngberg and L. B. Overaas, December 1966.
- 21 An Objective Aid for Forecasting the End of East Winds in the Columbia Gorge, July through October. D. John Copararis, April 1967.
- 22 Derivation of Radar Horizons in Mountainous Terrain. Roger G. Pappas, April 1967.

ESSA Technical Memoranda, Weather Bureau Technical Memoranda (WBTM)

- 25 Verification of Operation Probability of Precipitation Forecasts, April 1966-March 1967. W. W. Dickey, October 1967. (PB-176240)
- 26 A Study of Winds in the Lake Mead Recreation Area. R. P. Augulis, January 1968. (PB-177830)
- 28 Weather Extremes. R. J. Schmidli, April 1968 (Revised March 1986). (PB86 177672/AS)
- 29 Small-Scale Analysis and Prediction. Philip Williams, Jr., May 1968. (PB178425)
- 30 Numerical Weather Prediction and Synoptic Meteorology. CPT Thomas D. Murphy, USAF, May 1968. (AD 673366)
- 31 Precipitation Detection Probabilities by Salt Lake ARTC Radars. Robert K. Belesky, July 1968. (PB 179084)
- 32 Probability Forecasting-A Problem Analysis with Reference to the Portland Fire Weather District. Harold S. Ayer, July 1968. (PB 179289)
- 36 Temperature Trends in Sacramento-Another Heat Island. Anthony D. Lentini, February 1969. (PB 183055)
- 37 Disposal of Logging Residues Without Damage to Air Quality. Owen P. Cramer, March 1969. (PB 183057)
- 39 Upper-Air Lows Over Northwestern United States. A.L. Jacobson, April 1969. PB 184296)
- 40 The Man-Machine Mix in Applied Weather Forecasting in the 1970s. L.W. Snellman, August 1969. (PB 185068)
- 43 Forecasting Maximum Temperatures at Helena, Montana. David E. Olsen, October 1969. (PB 185762)
- 44 Estimated Return Periods for Short-Duration Precipitation in Arizona. Paul C. Kangieser, October 1969. (PB 187763)
- 46 Applications of the Net Radiometer to Short-Range Fog and Stratus Forecasting at Eugene, Oregon. L. Yee and E. Bates, December 1969. (PB 190476)
- 47 Statistical Analysis as a Flood Routing Tool. Robert J.C. Burnash, December 1969. (PB 188744)
- 48 Tsunami. Richard P. Augulis, February 1970. (PB 190157)
- 49 Predicting Precipitation Type. Robert J.C. Burnash and Floyd E. Hug, March 1970. (PB 190962)
- 50 Statistical Report on Aeroallergens (Pollens and Molds) Fort Huachuca, Arizona, 1969. Wayne S. Johnson, April 1970. (PB 191743)
- 51 Western Region Sea State and Surf Forecaster's Manual. Gordon C. Shields and Gerald B. Burdwell, July 1970. (PB 193102)
- 52 Sacramento Weather Radar Climatology. R.G. Pappas and C. M. Veliquette, July 1970. (PB 193347)
- 54 A Refinement of the Vorticity Field to Delineate Areas of Significant Precipitation. Barry B. Aronovitch, August 1970.
- 55 Application of the SSARE Model to a Basin without Discharge Record. Vail Schermerhorn and Donal W. Kuehl, August 1970. (PB 194394)
- 56 Areal Coverage of Precipitation in Northwestern Utah. Philip Williams, Jr., and Werner J. Heck, September 1970. (PB 194389)
- 57 Preliminary Report on Agricultural Field Burning vs. Atmospheric Visibility in the Willamette Valley of Oregon. Earl M. Bates and David O. Chilcote, September 1970. (PB 194710)
- 58 Air Pollution by Jet Aircraft at Seattle-Tacoma Airport. Wallace R. Donaldson, October 1970. (COM 71 00017)
- 59 Application of PE Model Forecast Parameters to Local-Area Forecasting. Leonard W. Snellman, October 1970. (COM 71 00016)
- 60 An Aid for Forecasting the Minimum Temperature at Medford, Oregon, Arthur W. Fritz, October 1970. (COM 71 00120)
- 63 700-mb Warm Air Advection as a Forecasting Tool for Montana and Northern Idaho. Norris E. Woerner, February 1971. (COM 71 00349)
- 64 Wind and Weather Regimes at Great Falls, Montana. Warren B. Price, March 1971.
- 65 Climate of Sacramento, California. Tony Martini, January 1988. (PB88 206370/AS)
- 66 A Preliminary Report on Correlation of ARTCC Radar Echoes and Precipitation. Wilbur K. Hall, June 1971. (COM 71 00829)
- 69 National Weather Service Support to Soaring Activities. Ellis Burton, August 1971. (COM 71 00956)
- 71 Western Region Synoptic Analysis-Problems and Methods. Philip Williams, Jr., February 1972. (COM 72 10433)

- 74 Thunderstorms and Hail Days Probabilities in Nevada. Clarence M. Sakamoto, April 1972. (COM 72 10554)
- 75 A Study of the Low Level Jet Stream of the San Joaquin Valley. Ronald A. Willis and Philip Williams, Jr., May 1972. (COM 72 10707)
- 76 Monthly Climatological Charts of the Behavior of Fog and Low Stratus at Los Angeles International Airport. Donald M. Gales, July 1972. (COM 72 11140)
- 77 A Study of Radar Echo Distribution in Arizona During July and August. John E. Hales, Jr., July 1972. (COM 72 11136)
- 78 Forecasting Precipitation at Bakersfield, California, Using Pressure Gradient Vectors. Earl T. Riddiough, July 1972. (COM 72 11146)
- 79 Climate of Stockton, California. Robert C. Nelson, July 1972. (COM 72 10920)
- 80 Estimation of Number of Days Above or Below Selected Temperatures. Clarence M. Sakamoto, October 1972. (COM 72 10021)
- 81 An Aid for Forecasting Summer Maximum Temperatures at Seattle, Washington. Edgar G. Johnson, November 1972. (COM 73 10150)
- 82 Flash Flood Forecasting and Warning Program in the Western Region. Philip Williams, Jr., Chester L. Glenn, and Roland L. Raetz, December 1972, (Revised March 1978). (COM 73 10251)
- 83 A comparison of Manual and Semiautomatic Methods of Digitizing Analog Wind Records. Glenn E. Rasch, March 1973. (COM 73 10869)
- 86 Conditional Probabilities for Sequences of Wet Days at Phoenix, Arizona. Paul C. Kangieser, June 1973. (COM 73 11264)
- 87 A Refinement of the Use of K-Values in Forecasting Thunderstorms in Washington and Oregon. Robert Y.G. Lee, June 1973. (COM 73 11276)
- 89 Objective Forecast Precipitation Over the Western Region of the United States. Julia N. Paegle and Larry F. Kierulff, September 1973. (COM 73 11946/3AS)
- 91 Arizona "Eddy" Tornadoes. Robert S. Ingram, October 1973. (COM 73 10465)
- 92 Smoke Management in the Willamette Valley. Earl M. Bates, May 1974. (COM 74 11277/AS)
- 93 An Operational Evaluation of 500-mb Type Regression Equations. Alexander E. MacDonald, June 1974. (COM 74 11407/AS)
- 94 Conditional Probability of Visibility Less than One-Half Mile in Radiation Fog at Fresno, California. John D. Thomas, August 1974. (COM 74 11555/AS)
- 95 Climate of Flagstaff, Arizona. Paul W. Sorenson, and updated by Reginald W. Preston, January 1987. (PB87 143160/AS)
- 96 Map type Precipitation Probabilities for the Western Region. Glenn E. Rasch and Alexander E. MacDonald, February 1975. (COM 75 10428/AS)
- 97 Eastern Pacific Cut-Off Low of April 21-28, 1974. William J. Alder and George R. Miller, January 1976. (PB 250 711/AS)
- 98 Study on a Significant Precipitation Episode in Western United States. Ira S. Brenner, April 1976. (COM 75 10719/AS)
- 99 A Study of Flash Flood Susceptibility-A Basin in Southern Arizona. Gerald Williams, August 1976. (COM 75 11360/AS)
- 102 A Set of Rules for Forecasting Temperatures in Napa and Sonoma Counties. Wesley L. Tuft, October 1976. (PB 246 902/AS)
- 103 Application of the National Weather Service Flash-Flood Program in the Western Region. Gerald Williams, January 1976. (PB 253 053/AS)
- 104 Objective Aids for Forecasting Minimum Temperatures at Reno, Nevada, During the Summer Months. Christopher D. Hill, January 1976. (PB 252 866/AS)
- 105 Forecasting the Mono Wind. Charles F. Ruscha, Jr., February 1976. (PB 254 650)
- 106 Use of MOS Forecast Parameters in Temperature Forecasting. John C. Plankinton, Jr., March 1976. (PB 254 649)
- 107 Map Types as Aids in Using MOS PoPs in Western United States. Ira S. Brenner, August 1976. (PB 259 594)
- 108 Other Kinds of Wind Shear. Christopher D. Hill, August 1976. (PB 260 437/AS)
- 109 Forecasting North Winds in the Upper Sacramento Valley and Adjoining Forests. Christopher E. Fontana, September 1976. (PB 273 677/AS)
- 110 Cool Inflow as a Weakening Influence on Eastern Pacific Tropical Cyclones. William J. Denney, November 1976. (PB 264 655/AS)
- 112 The MAN/MOS Program. Alexander E. MacDonald, February 1977. (PB 265 941/AS)
- 113 Winter Season Minimum Temperature Formula for Bakersfield, California, Using Multiple Regression. Michael J. Oard, February 1977. (PB 273 694/AS)
- 114 Tropical Cyclone Kathleen. James R. Fors, February 1977. (PB 273 676/AS)
- 116 A Study of Wind Gusts on Lake Mead. Bradley Colman, April 1977. (PB 268 847)
- 117 The Relative Frequency of Cumulonimbus Clouds at the Nevada Test Site as a Function of K-Value. R.F. Quiring, April 1977. (PB 272 831)
- 118 Moisture Distribution Modification by Upward Vertical Motion. Ira S. Brenner, April 1977. (PB 268 740)
- 119 Relative Frequency of Occurrence of Warm Season Echo Activity as a Function of Stability Indices Computed from the Yucca Flat, Nevada, Rawinsonde. Darryl Randsone, June 1977. (PB 271 290/AS)
- 121 Climatological Prediction of Cumulonimbus Clouds in the Vicinity of the Yucca Flat Weather Station. R.F. Quiring, June 1977. (PB 271 704/AS)
- 122 A Method for Transforming Temperature Distribution to Normality. Morris S. Webb, Jr., June 1977. (PB 271 742/AS)
- 124 Statistical Guidance for Prediction of Eastern North Pacific Tropical Cyclone Motion - Part I. Charles J. Neumann and Preston W. Leftwich, August 1977. (PB 272 661)
- 125 Statistical Guidance on the Prediction of Eastern North Pacific Tropical Cyclone Motion - Part II. Preston W. Leftwich and Charles J. Neumann, August 1977. (PB 273 155/AS)
- 126 Climate of San Francisco. E. Jan Null, February 1978. Revised by George T. Pericht, April 1988. (PB88 208624/AS)
- 127 Development of a Probability Equation for Winter-Type Precipitation Patterns in Great Falls, Montana. Kenneth B. Mielke, February 1978. (PB 281 387/AS)
- 128 Hand Calculator Program to Compute Parcel Thermal Dynamics. Dan Gudgel, April 1978. (PB 283 080/AS)
- 129 Fire whirls. David W. Goens, May 1978. (PB 283 866/AS)
- 130 Flash-Flood Procedure. Ralph C. Hatch and Gerald Williams, May 1978. (PB 286 014/AS)
- 131 Automated Fire-Weather Forecasts. Mark A. Mollner and David E. Olsen, September 1978. (PB 289 916/AS)
- 132 Estimates of the Effects of Terrain Blocking on the Los Angeles WSR-74C Weather Radar. R.G. Pappas, R.Y. Lee, B.W. Finke, October 1978. (PB 289767/AS)
- 133 Spectral Techniques in Ocean Wave Forecasting. John A. Jannuzzi, October 1978. (PB291517/AS)
- 134 Solar Radiation. John A. Jannuzzi, November 1978. (PB291195/AS)
- 135 Application of a Spectrum Analyzer in Forecasting Ocean Swell in Southern California Coastal Waters. Lawrence P. Kierulff, January 1979. (PB292716/AS)
- 136 Basic Hydrologic Principles. Thomas L. Dietrich, January 1979. (PB292247/AS)
- 137 LFM 24-Hour Prediction of Eastern Pacific Cyclones Refined by Satellite Images. John R. Zimmerman and Charles P. Ruscha, Jr., January 1979. (PB294324/AS)
- 138 A Simple Analysis/Diagnosis System for Real Time Evaluation of Vertical Motion. Scott Heflick and James R. Fors, February 1979. (PB294216/AS)
- 139 Aids for Forecasting Minimum Temperature in the Wenatchee Frost District. Robert S. Robinson, April 1979. (PB298339/AS)

NOAA Technical Memorandum NWS WR-204

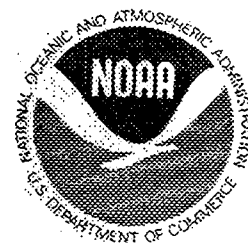
**PRELIMINARY ANALYSIS OF CLOUD-TO-GROUND LIGHTNING
IN THE VICINITY OF THE NEVADA TEST SITE**

**Carven Scott
National Weather Service Nuclear Support Office
Las Vegas, Nevada
November 1988**

UNITED STATES
DEPARTMENT OF COMMERCE
C. William Verity, Secretary

National Oceanic and
Atmospheric Administration
William E. Evans, Administrator

National Weather
Service
Elbert W. Friday, Jr., Director



This publication has been reviewed
and is approved for publication by
Scientific Services Division,
Western Region.



Ken Mielke, Acting Chief
Scientific Services Division
Salt Lake City, Utah

TABLE OF CONTENTS

	PAGE
Table of Contents	iii
List of Tables	iv
List of Figures	v
Abstract	vi
I. Introduction	1
II. Lightning Detection Network Accuracy and Efficiency	1
III. Lightning Climatological Data	4
A. Lightning Flash Rate	4
B. Lightning Flash Data Versus Terrain	7
IV. Positive Cloud-to-Ground Flashes	7
A. Vertical Wind Shear	7
B. Nocturnal Maximum	11
V. Summary	11
VI. References	11

LIST OF TABLES

	<u>PAGE</u>
Table 1. Statistics of Cloud-to-Ground Lightning from the NTS for July 23, 1986 through August 26, 1987.	4

LIST OF FIGURES

	PAGE
Figure 1. NTS ALDS Network	2
Figure 2. Network Configuration for the NTS Lightning Location System	3
Figure 3. NTS/ALDS System Accuracy (50% Probability Ellipsis)	3
Figure 4. NTS/ALDS System Accuracy (Contour Plot Showing Lines of Equal Accuracy). Values are the Length of the Semi-Major Axis of the 50% Probability Ellipses.	5
Figure 5. Number of CG Flashes Measured by the NTS ALDS as a Function of Time	6
Figure 6. CB Activity on the NTS for May-September (After Quirling, 1986).	6
Figure 7. Total Number of Hours of Echo Activity for June through September 1971 and 1972 (Adjusted for Detectability). (After Randerson, 1976).	8
Figure 8. Total CG Flashes vs. Terrain	9
Figure 9. Positive CG Flashes vs. Terrain	10
Figure 10. Percent Positive CG Flashes as a Function of Time.	10

PRELIMINARY ANALYSIS OF CLOUD-TO-GROUND LIGHTNING IN THE VICINITY OF THE NEVADA TEST SITE

ABSTRACT

Cloud-to-ground lightning (CG) constitutes a severe hazard to both personnel and sensitive equipment. The Weather Service Nuclear Support Office (WSNSO) operates an Automatic Lightning Detection Network to ensure maximum protection on the Nevada Test Site (NTS). This study describes the lightning network in some detail. The accuracy and detection efficiency of the system is also investigated.

Lightning data were collected and analyzed for the period July 1986 through August 1987. Of particular interest in this data set was the temporal variation of both positive and negative CG flashes. In addition, factors that may influence the character and distribution of lightning flashes were studied.

PRELIMINARY ANALYSIS OF CLOUD-TO-GROUND LIGHTNING IN THE VICINITY OF THE NEVADA TEST SITE

I. INTRODUCTION

Recent development of equipment that can accurately locate and detect certain properties of lightning on a real-time basis has been beneficial to the operational meteorologist as well as to the researcher. National Weather Service (NWS) Western Region meteorologists are especially familiar with the Automatic Lightning Detection System (ALDS) operated by the Bureau of Land Management (BLM) (Krider, *et. al.*, 1980). The NWS Western Region has been involved with collecting and disseminating this real-time lightning data from the BLM since 1982. The data are processed at the NWS Forecast Office in Boise, ID, where various products are created for dissemination via the AFOS communications loop (Rasch and Mathewson, 1984).

However, real-time lightning products are only available via AFOS, at a minimum, every 30 minutes. This interval is unsatisfactory to provide timely support of operations at the Nevada Test Site (NTS). To ensure the maximum protection of personnel and equipment, the Weather Service Nuclear Support Office (WSNSO), under the auspices of the Department of Energy (DOE), activated an ALDS at the NTS in July 1986.

This system represents an opportunity in the West to assess the viability of the NTS/ALDS configuration. Utilizing lightning data gathered during the period July 1986 through August 1987, this study attempts to investigate factors that might influence the character and distribution of cloud-to-ground (CG) flashes. The accuracy of flash placement possible with the NTS system (explained in the next section), in conjunction with other resources available, makes the NTS an ideal location to undertake this investigation.

II. LIGHTNING DETECTION NETWORK ACCURACY AND EFFICIENCY

The NTS network consists of four Direction Finders (DFs) manufactured by Lightning Location and Protection, Inc. (LLP), (Krider, *et. al.*, 1980). Figure 1 shows that currently one DF is located in each of the corners of the NTS. The rectangular shape of the NTS leads to east-west baselines of approximately 40 km, and north-south baselines of almost 75 km. As seen in Figure 2, lightning information from the DFs is multiplexed from the NTS to the Position Analyzer (PA) at the Nevada Operations Office in Las Vegas.

The PA processes the raw DF data and automatically computes the locations of the lightning flashes by triangulation, utilizing input from at least two

of the DFs (LLP/PA Manual, 1984). Since bearing angles from the DFs have an estimated angular accuracy of +1 degree (Krider, *et. al.*, 1980), the trigonometric calculations lead to a decrease in the confidence of flash placement as the distance to the flash increases. This uncertainty is expressed in the probability or error ellipse (Figure 3). If one assumes that a flash occurs at the center of an ellipse, the probability ellipse is defined as a region within which a flash has a 50 percent or greater probability of being placed by the calculations of the PA.

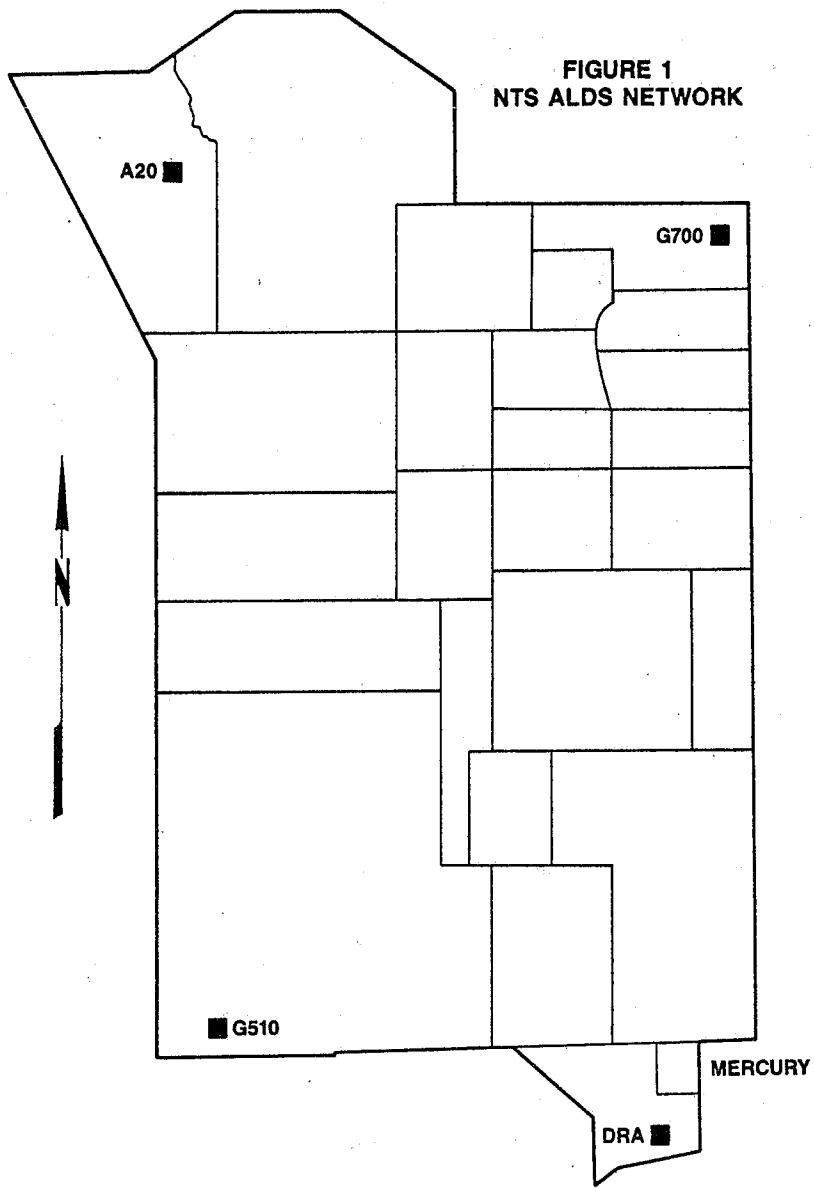
From the PA, the processed lightning data are routed to various display devices in the DOE family of operations (see Figure 2). Additionally, flash information such as flash polarity, number of return strokes, and all raw DF information, is transmitted to an archive device. The archival capability allows WSNSO meteorologists access to detailed flash data for system analysis and research applications.

For the NTS/ALDS, with an average baseline of about 56 km between DFs, the confidence in the flash location outside of about 170 km is quite low. This fact is graphically portrayed in contour plot of lines of equal accuracy of the flash location, derived from the probability ellipse chart. Careful study of Figure 4 indicates especially low confidence in flash location to the southeast and northwest, outside of 170 km, no doubt attributable to the short east-west baseline (40 km).

With the mission of the WSNSO in mind (support of DOE operations on the NTS), the sensor gain was lowered to be more compatible with the baseline length of the NTS network. Lowering the gain reduced the nominal range (nominal range is defined loosely as the range at which the detection efficiency starts to fall off) of the DF from approximately 370 km to 90 km. This eliminated most of the flashes that occurred beyond the point where the PA can process lightning flashes accurately.

Presently, only a cursory ground-truth analysis has been conducted on the NTS/ALDS. A preliminary estimate of flash locations inside the designed nominal range indicates the multi-site detection efficiency of the NTS/ALDS (approximately 80 percent) is in line with data from previous studies (Mach, 1984, MacGorman *et. al.*, 1984). Locations of CG flashes were pinpointed on several occasions on and near the NTS by WSNSO and Los Alamos National Laboratory (LANL) personnel during the summer of 1986. Comparison of the limited ground-truth data with the NTS/ALDS locations indicates a very close agreement (1 km or less from their true position).

**FIGURE 1
NTS ALDS NETWORK**



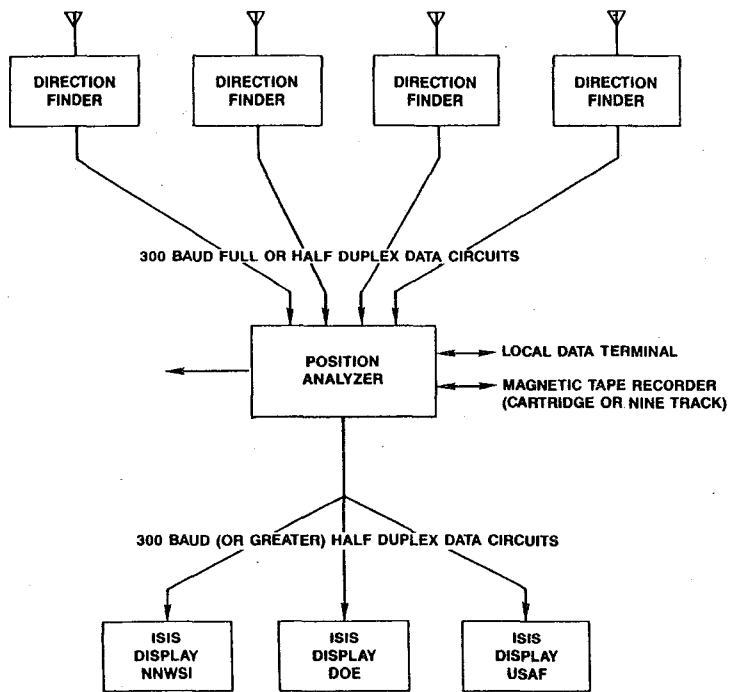


FIGURE 2
NETWORK CONFIGURATION FOR THE NTS LIGHTNING LOCATING SYSTEM

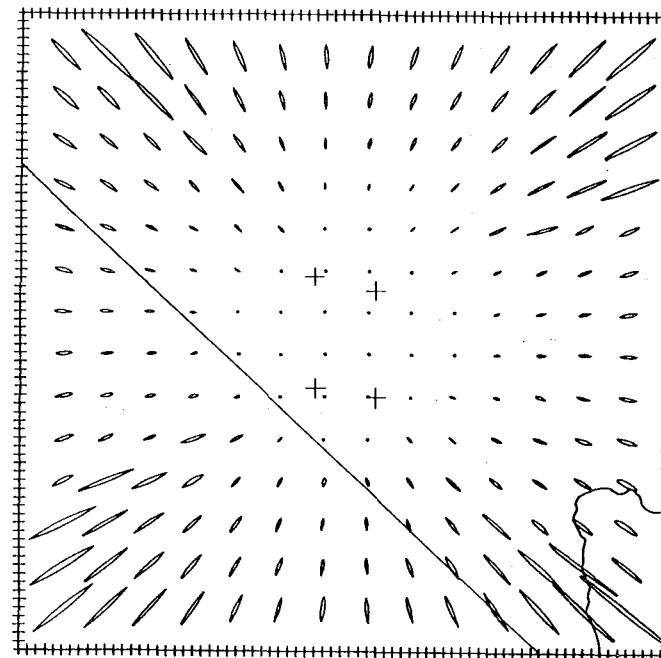


FIGURE 3
NTS/ALDS SYSTEM ACCURACY
(50% PROBABILITY ELLIPSES)

A more elaborate ground-truth program, the Lightning Identification and Verification Evaluation Study (LIVES) Project, was attempted during the summer of 1987. WSNSO personnel were deployed in and around the NTS at locations where closed-circuit television cameras were located. These individuals communicated with a command post via two-way radios to coordinate camera aiming and to keep an event log for cross-reference purposes. In addition, the lightning warning system maintained by LANL on the NTS was closely monitored.

The LANL system (described in Buset and Price, 1974) is a lightning warning system manufactured by Meteorology Research, Inc.. Coupled to the atmosphere by means of a radioactive probe, the instrument measures the slow varying electric field as well as the faster changing electrostatic component due to a lightning discharge. When a lightning discharge occurs, the distance to the discharge is computed and then transmitted to a strip recorder. Though different in principle, the LANL system is similar to the field mill in the parameters that one attempts to measure. Unfortunately, like the field mill, the LANL system is unable to discriminate among cloud-to-ground, cloud-to-cloud, and intra-cloud discharges.

However, by comparing data sets from the LANL system, the NTS/ALDS and ground observers, estimates can be made of the percentage of CG flashes versus total lightning discharges as well as other useful relationships. This may be accomplished through the correlation of ground reports with flash locations from the NTS/ALDS. These correlations, in turn, can also be compared with output from the LANL system.

The lack of thunderstorm activity on the NTS during the summer of 1987 resulted in a lightning flash data set too small to allow any definite conclusions to be drawn. However, some ground-truth validation utilizing a limited set of observations from LANL will hopefully be incorporated into a subsequent report.

III. LIGHTNING CLIMATOLOGICAL DATA

During the period July 23, 1986 through August 26, 1987, the NTS network detected a total of 45,092 CG flashes (Table 1). Of these, 1377 (or 3 percent) were positive cloud-to-ground flashes. Consequently, nearly 97 percent of the detected flashes were negative, very close to the percentage other investigators (Fuquay, 1982 and Mielke, 1986) have found in the western United States.

Using only sunset-sunrise as a discriminator, the percentage of positive flashes increased to 4.5 percent after sunset (Table 1). This figure is nearly twice the percentage of positive flashes received during the daylight hours. This is phenomenon, noted by other investigations (Orville, *et al.*, 1983 and Mielke, 1986), is developed further in a later section.

However, the hour of maximum CG lightning activity was very close to the time of maximum cumulonimbus (CB) activity as reported in observations taken at the Yucca Weather Station (1962-1975) summarized by Quiring (1976) in his study on the NTS. Figure 5 is a plot of the number of CG flashes as function of time as measured by the ALDS. Figure 6 represents the number of CB occurrences versus time on the NTS. Both curves peak at approximately 2300Z (1700 PDT), certainly not unexpected given the relationship between lightning and CB activity.

Table 1

Statistics of Cloud-to-Ground Lightning from the NTS for July 23, 1986 through August 26, 1987

Total cloud-to-ground flashes -	45092
Total positive cloud-to-ground flashes -	1377
Percent positive cloud-to-ground flashes -	3.1%
Cloud-to-ground flashes (daytime) -	33697
Positive cloud-to-ground flashes (daytime) -	861
Percent positive cloud-to-ground flashes -	2.6%
Cloud-to-ground flashes (nighttime) -	11395
Positive cloud-to-ground flashes (nighttime) -	516
Percent positive cloud-to-ground flashes -	4.5%

A. Lightning Flash Rate

Lightning flash rates were studied in some detail. The flash rate, as well as the number of CG flashes detected by the NTS/ALDS, pales in comparison to results from the National Severe Storm Laboratory network in Oklahoma and the National Aeronautics and Space Administration network in southern Florida. Goodman and MacGorman (1985) found that mesoscale convective complexes in Oklahoma often have flash rates in excess of 3000 hr^{-1} . The most active lightning day measured by the NTS/ALDS was August 8, 1987, when almost 2,200 flashes were detected.

Interesting to note, however, was the comparison of flash rates detected from individual airmass thunderstorms. CG flash rates measured by the NTS/ALDS for individual thunderstorms were 1 to 2 min^{-1} . This figure is in close agreement with flash rates in air mass thunderstorms measured by both Maier and Krider (1983), and Rust, *et al.*, (1981).

Although no severe thunderstorms were identified on the NTS during the 13-month period, two thunderstorms did produce surface wind gusts approaching severe criteria (50 kt). Flash rates of 7 min^{-1} (consistent with the flash rates of severe thunderstorms from the studies cited in the previous paragraph) were detected by the NTS/ALDS

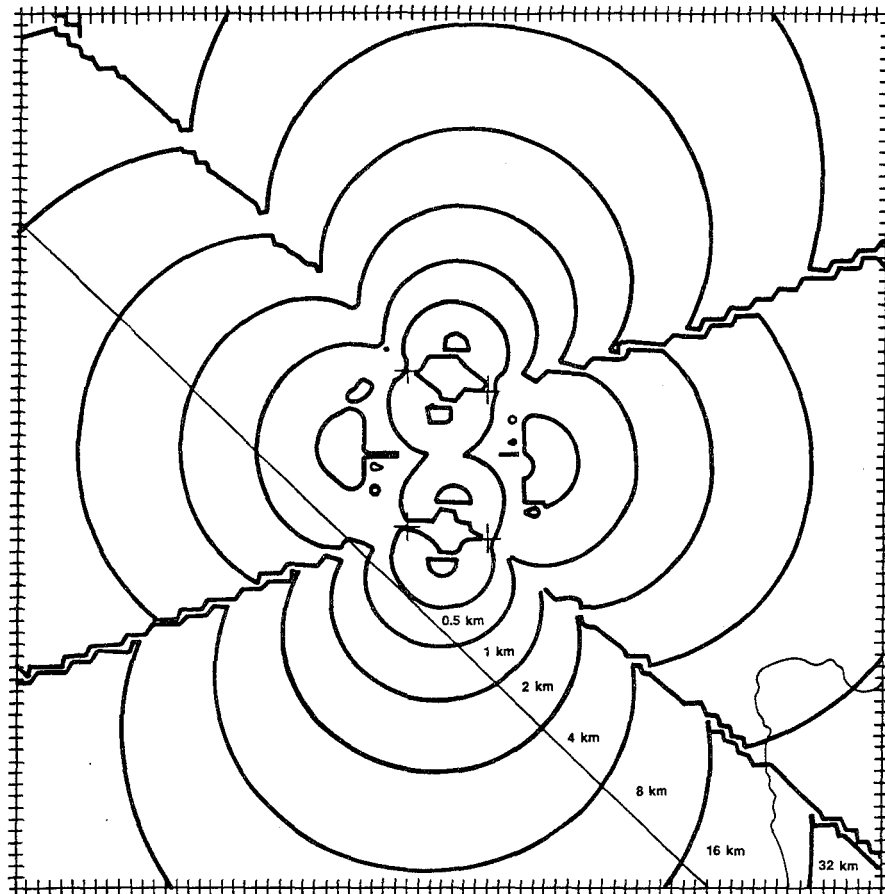


FIGURE 4
NTS/ALDS SYSTEM ACCURACY
(CONTOUR PLOT SHOWING LINES OF EQUAL ACCURACY.
VALUES ARE THE LENGTH OF THE SEMI-MAJOR
AXIS OF A 50% PROBABILITY ELLIPSE.)

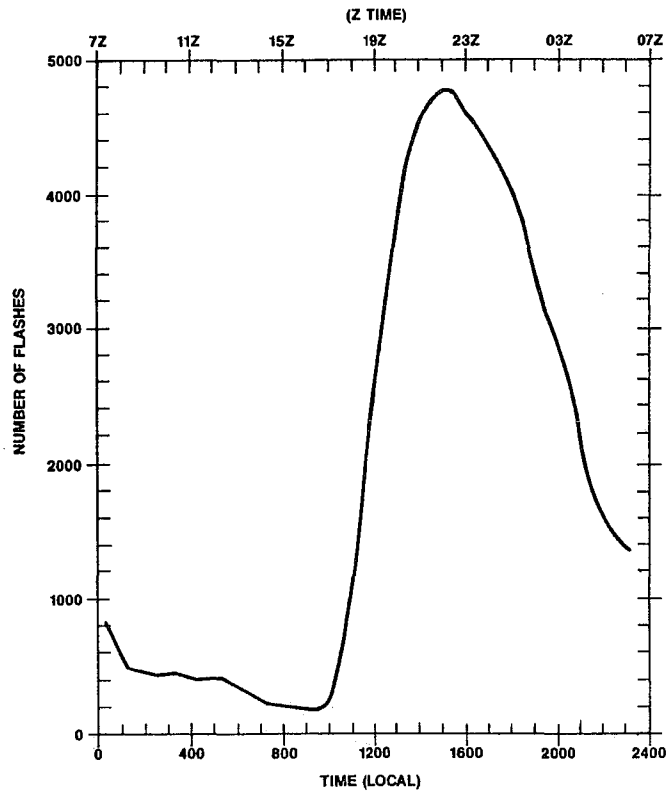


FIGURE 5
 NUMBER OF CG FLASHES MEASURED BY
 THE NTS ALDS AS A FUNCTION OF TIME

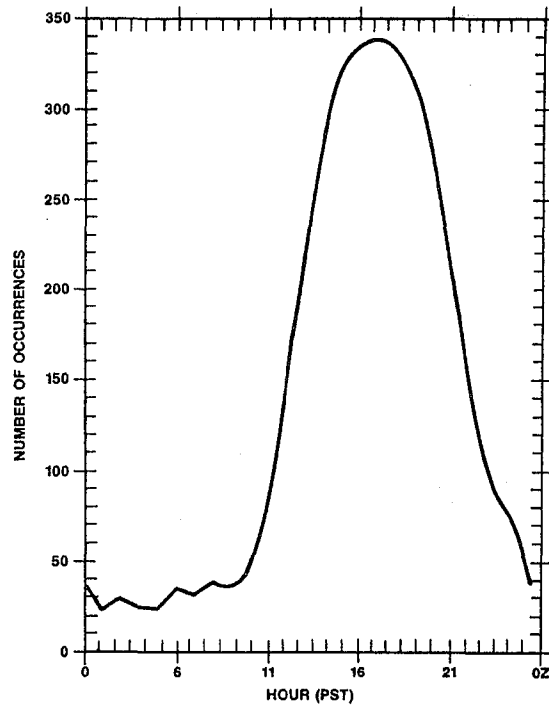


FIGURE 6
 CB ACTIVITY ON THE NTS FOR MAY-SEPTEMBER
 AFTER QUIRING (1976)

with both of these storms. However, several other thunderstorms also produced flash rates of $6-7 \text{ min}^{-1}$, but were not observed to produce severe weather.

As Mielke (1986) stated, flash flooding is an important problem for the NWS Western Region. He reported evidence of a relationship between negative CG clusters and flash flood events. Four events were documented this past summer where the NTS/ALDS indicated clustering of CG flashes, and "heavy" rainfall could be documented through the NTS rainfall network (heavy rain being defined as in excess of .75 inch in 1 to 2 hours). At least one heavy rainfall event occurred, though, where the flash data did not indicate clustering. The implication is that clustering of strikes may indicate flash flood potential, but lack of clustering does not necessarily mean heavy rains are not possible.

B. Lightning Flash Data Versus Terrain

Lightning flash density studies by Buset and Price (1974) conducted over the NTS indicate that thunderstorms tend to develop over high terrain. A climatology of radar echoes in part of the southwestern United States (Randerson, 1976) also pointed to this preference (Figure 7). However, a summary plot of lightning flashes in the vicinity of the NTS for the period June 15 through August 26, 1987, overlaid with a terrain map (Figure 8), indicates that this preference for high terrain may not extend as strongly to CG flashes as one might intuitively believe.

In contrast, a recent study by Reap (1986) indicates a very high correlation between the location of lightning strikes and terrain. The discrepancy between the NTS study and the Reap study may lie in the scale within which each study was conducted. Without going into a detailed comparison, the NTS study utilized a terrain map at least an order of magnitude finer in detail. Additionally, though no definitive study has been done on the accuracy of the BLM/ALDS, the spacing average between the BLM/ALDS DFs (350 km) naturally leads to larger error ellipses than are produced with the NTS/ALDS over the region in which the NTS study was conducted. Thus, direct comparison of the results of the two studies is not possible.

Figure 8 (representing about one month's data) for example, demonstrates that although CG lightning flashes do strike higher ground, there are anomalies apparent. One such anomalous area is at the western edge of the NTS where a pronounced concentration of flashes was detected. Most of the flashes in that area occurred during one thunderstorm that remained nearly stationary away from the high terrain that prevails over a large part of the northwestern NTS. Another anomaly is located in the south-central part of the NTS. Though indeed the lack of correlation with the highest terrain may be a function of the limited data set, lightning flash maps from other months show this same tendency.

Based on the available data, positive CG flashes show the same tendency for striking away from the highest terrain. Figure 9 depicts the locations of the positive CG flashes around the NTS for the period July 23, 1986 through May 9, 1987. After having studied many thunderstorms with the NTS/ALDS, most of the positive CG flashes that do occur on the high terrain, generally flash either in the wake of or ahead of the thunderstorm. This conclusion was ascertained via a detailed, time-lapse analysis of many thunderstorms that produced positive CG flashes in the vicinity of the NTS. This observation has been confirmed by previous studies (Fuquay, 1982, and Rust, *et. al.*, 1981).

IV. POSITIVE CLOUD-TO-GROUND FLASHES

Hardware improvements in the LLP/ALDS allow the detection of positive as well as negative CG flashes. As stated previously, negative CG flashes comprise the vast majority of CG lightning. However, recent studies indicate that positive flashes differ from their negative counterparts in at least two ways. The positive CG flash (which lowers positive charge to ground) apparently transfers many times the amount of charge to ground than the negative CG flash, and with a peak return stroke current many times the average negative flash (Brook, *et. al.*, 1983). Continuing current following the return stroke of the positive CG flash has also been documented by several investigators (Fuquay 1982, Rust, *et. al.*, 1985a).

The destructive potential of positive CG flashes has been recognized by the electrical power industry and the United States Forest Service, as well as the research community. Working conditions at the NTS often put personnel and electrically sensitive equipment in vulnerable positions with respect to lightning. Thus, the ability to physically relate the positive CG flash to certain parameter(s) is an important research topic.

A. Vertical Wind Shear

Recent studies by Rust, *et. al.* (1985b) and Brook, *et. al.* (1982), have both indicated a correlation between moderately strong 850-300 mb wind shear and the number of positive CG flashes. The intensity of the vertical wind shear through the electrically active portion of the thundercloud does seem to play an important factor in differentiating storms more prone to positive CG flashes.

Several thunderstorm systems were studied in detail utilizing information from the NTS/ALDS. Preliminary results indicate that the percentage of positive flashes increases under the influence of strong vertical wind shear. However, too little data are presently available over Nevada to draw any firm conclusions relating vertical wind shear to positive CG flashes.

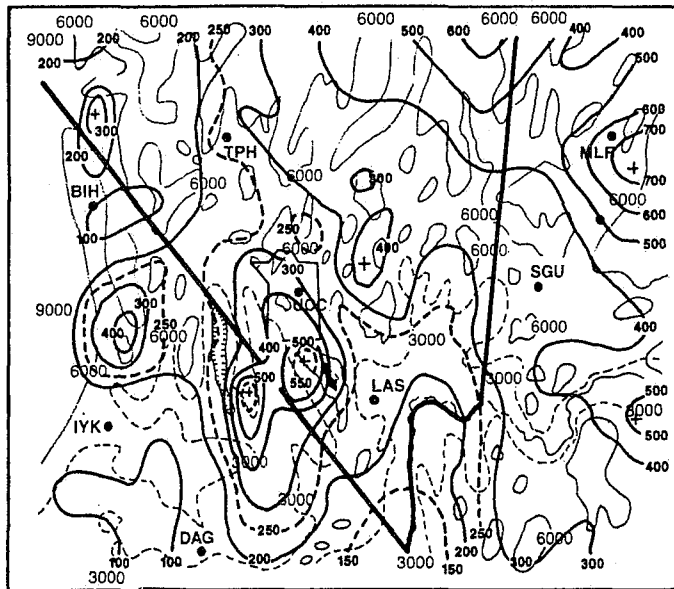


FIGURE 7
TOTAL NUMBER OF HOURS OF ECHO ACTIVITY FOR
JUNE THROUGH SEPTEMBER 1971 AND 1972
(ADJUSTED FOR DETECTABILITY) AFTER RANDESON (1976).

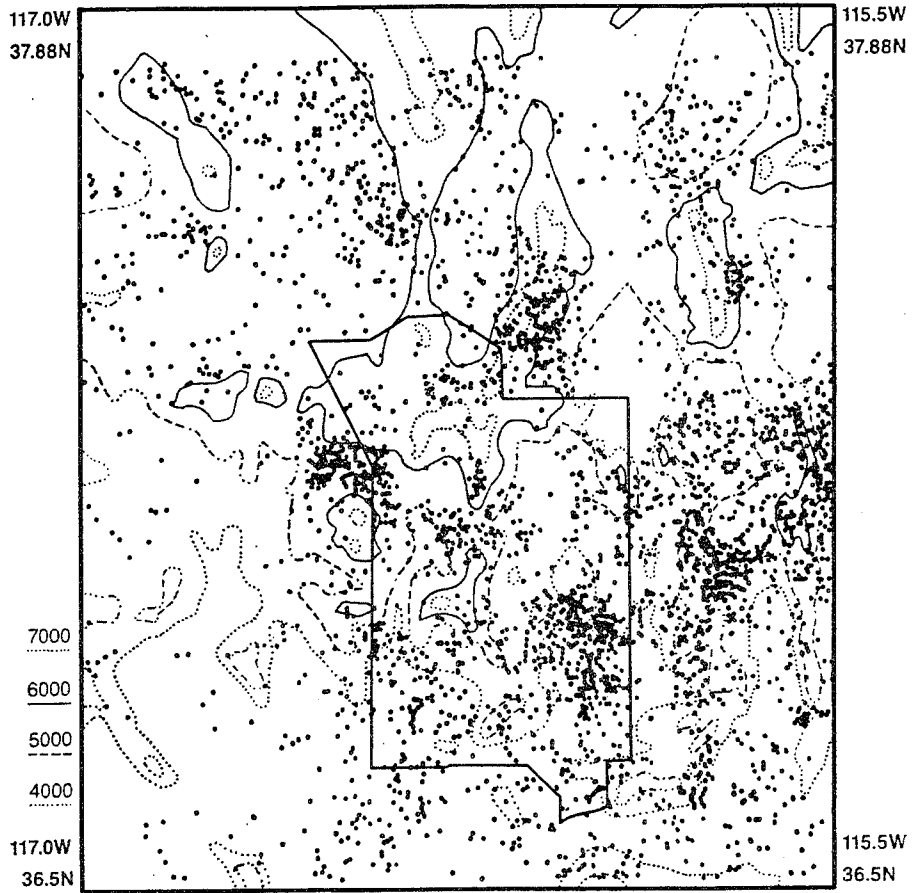


FIGURE 8
TOTAL CG FLASHES vs TERRAIN

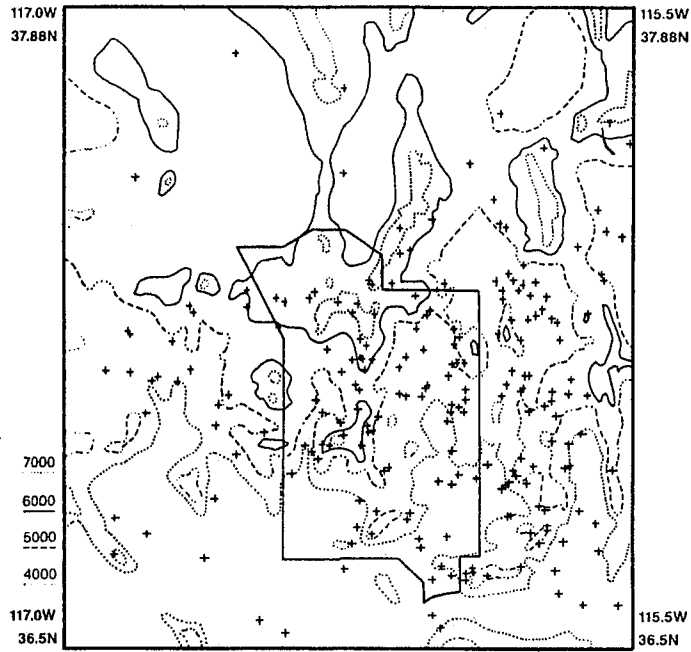


FIGURE 9
 POSITIVE CG FLASHES vs TERRAIN

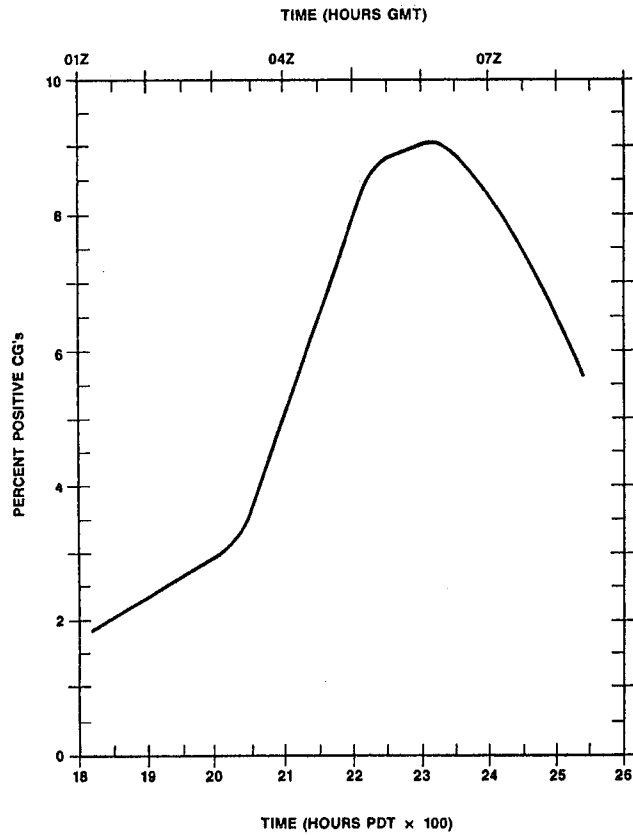


FIGURE 10
 PERCENT POSITIVE CG FLASHES AS A FUNCTION OF TIME

B. Nocturnal Maximum

Positive CG flashes also exhibit a diurnal peak at approximately 0600Z, or roughly local midnight in the western United States (Figure 10). Data for the graph were derived by selecting all thunderstorm days from the NTS/ALDS data base where thunderstorm activity that began during the daylight hours continued after sunset by at least 2 hours. This data set was then broken into hourly intervals, and the percentage of positive CGs to total flashes was computed for each time interval. The graph, thus, represents a composite of lightning flashes that occurred on thunderstorm days that spanned local sunset.

The nocturnal maximum phenomenon can partly be attributed to the End-of-Storm-Oscillation (EOSO) (Moore and Vonnegut, 1977). EOSO is commonly observed in a dissipating thunderstorm when downdrafts predominate. As the cell collapses, downdrafts displace the negative charge in the lower cloud outward and expose the ground to the positive charge in the upper cloud. Normally, by local midnight, convection is diminishing (more storms are diminishing than are building); thus, the ratio of positive CG flashes can increase.

An additional source of positive CG flashes in diminishing thunderstorms is the cirrus anvil. Positive CG flashes are often observed emanating from the anvil during the mature and later stages of severe thunderstorms (Rust, *et. al.*, 1981). The positive charge concentrated on ice crystals in the spreading anvil has an unobstructed path to the earth's surface, facilitating the production of positive CG flashes.

Some research indicates that the "nocturnal maximum" is not real, but a misidentified negative CG waveform signature (Orville, *et. al.*, 1983). In theory, the misinterpretation is due to the reflection of a distant negative CG waveform off the stronger, nocturnal F-layer in the ionosphere that inverts the waveform. There is also the possibility that non-vertical channels of the intra-cloud or CG flash could cause waveform distortion, enough so that the DF could misidentify the received waveform. However, in the cases studied in detail utilizing the NTS/ALDS, the majority of the positive CG flashes were located inside or within 35 km of the NTS boundary which negates the reflection problem. This fact, combined with recent improvements in DF technology and increased signal strength thresholds for positive CG flashes, make both of these scenarios highly unlikely.

Indeed, at least two storm days studied over the past 18 months utilizing the NTS/ALDS showed peak convection and lightning activity after local sunset (23-24 July 1986, 25-26 August 1986). In these cases, the percentage of positive CG flashes was higher than "normal" while lightning activity was either increasing, or at least remaining at a peak level. Neither the anvils of dissipating thunderstorms nor the EOSO phenomenon would

be adequate to explain the anomalously high positive CG percentages observed in the above situations.

There is little literature addressing this apparent nighttime maximum of positive CG flashes. Speculation would lead one to believe that, if this effect is indeed real, electric field changes that occur after sunset (both internal and external to the thundercloud) may somehow be responsible. Certainly more research needs to be done on this effect and on the cloud electrification processes that could cause a nighttime maximum of positive CG flashes.

V. SUMMARY

Preliminary analysis of the data set from the period July 23, 1986 through August 26, 1987 from the NTS/ALDS reveal the following:

1. For southern Nevada, approximately 97 percent of CG flashes lower negative charge to the ground. The remaining 3 percent lower positive charge to the ground.
2. In the majority of the cases, positive CG flashes were observed to strike away from the thunderstorm.
3. The CG flash rate maximizes at around 2300Z in the afternoon, coinciding approximately with the time of maximum cumulonimbus activity.
4. The ratio of positive to negative flashes, as well as the number of positive CG flashes, increases after sunset, maximizing at about 0600Z. The ratio of positive to negative flashes rises from about 2 percent during the afternoon to nearly 10 percent by midnight.
5. As noted by other authors, the vertical wind shear plays a role in the evolution of the positive CG flash. Positive CG flashes were observed to occur in areas of higher shear in three cases studied in detail. However, the data are too limited to draw firm conclusions.

VI. REFERENCES

- Brook, M., M. Nikano, P. Krehbiel, and T. Takeuti, 1982: The Electrical Structure of the Hokuriku Winter Thunderstorms, *Journal of Geophysical Research*, 87, 1207-1215.
- Brook, M., P. Krehbiel, D. MacLaughlan, T. Takeuti, and M. Nakano, 1983: Positive Ground Stroke Observations in Japanese and Florida Storms, *Proceedings in Atmospheric Electricity*, L. H. Ruhnke and J. Latham, eds, 365-369.

- Buset, K. and K.W. Price, 1974: Lightning Flash Density and Calculation of Strike Probabilities to Certain Vulnerable Installations at the Nevada Test Site (NTS), Los Alamos-UR-74-1953.
- Fuguay, D.M., 1982: Positive Cloud-to-Ground Lightning in Summer Thunderstorms, *Journal of Geophysical Research*, 87, 7131-7140.
- Goodman, S.J. and D.R. MacGorman, 1985: Lightning Activity in Mesoscale Convective Systems, Preprints: 14th Conference on Severe Local Storms, 368-371.
- Krider, E.P., A.E. Pifer, and D.L. Vance, 1980: Lightning Direction-Finding Systems for Forest Fire Detection, *Bulletin of the American Meteorology Society*, 61, 980-986.
- Lightning Location and Protection, Inc., 1984: Operating Manual: Lightning Position Analyzer, Model PA 80-02.
- Mach, D.M., 1984: Evaluation of an LLP Ground Strike Locating System, Master's Thesis, University of Oklahoma Press, 20-27.
- MacGorman, D.R., M.W. Maier, and W.D. Rust, 1984: Lightning Strike Density for the Contiguous United States from Thunderstorm Duration Records, Report to the Nuclear Regulatory Commission, USNRC Rep. NUREG/CR3759.
- Maier, N.W. and E.P. Krider, 1983: A Comparative Study of Cloud-to-Ground Lightning Characteristics in Florida and Oklahoma Thunderstorms, Preprints: 12th Conference on Severe Local Storms, 334-337.
- Mielke, K.B., 1986: An Analysis of the 1986 Lightning Season in the Western United States, *EOS*, 67, 887.
- Moore, C.B. and B. Vonnegut, 1977: The Thundercloud, *Lightning Volume 1: Physics of Lightning*, R. H. Golde, ed, 80-84.
- Orville, R.E., R.W. Henderson, and L.F. Bosart, 1983: An East Coast Lightning Detection Network, *Bulletin of the American Meteorology Society*, 1029-1037.
- Quiring, R.F., 1976: Climatological Prediction of Cumulonimbus Clouds in the Vicinity of the Yucca Flat Weather Station, WSNSO-351-65, U.S. Department of Commerce, National Weather Service Western Region.
- Randerson, D., 1976: Summertime Radar Echo Distributions of Moist Convection over Southern Nevada and Adjacent Areas for 1971 and 1972, NOAA Technical Memorandum ERL ARL-58, U.S. Department of Commerce, National Weather Service Western Region.
- Rasch, G.E. and M.A. Mathewson, 1984: Collection and Use of Lightning Strike Data in the Western United States During Summer 1983, NOAA Technical Memorandum NWS WR-184, U.S. Department of Commerce, National Weather Service Western Region.
- Reap, R.M., 1986: Evaluation of Cloud-to-Ground Lightning Data from the Western United States for the 1983-84 Thunderstorm Seasons", *Journal of Climatology and Meteorology*, 25, 785-799.
- Rust, W.D., W.L. Taylor, D.R. MacGorman, and R.T. Arnold, 1981: Research on Electrical Properties of Severe Thunderstorms in the Great Plains, *Bulletin of the American Meteorology Society*, 62, 1286-1293.
- Rust, W.D., D.R. MacGorman, and W.L. Taylor, 1985a: Photographic Verification of Continuing Current in Positive Cloud-to-Ground Flashes, *Journal of Geophysical Research*, 90, 6144-6146.
- Rust, W.D. and D.R. MacGorman, 1985b: Unusual Positive Cloud-to-Ground Lightning in Oklahoma Storms on 13 May 1983, Preprints: 14th Conference on Severe Local Storms, 372-375.

- 140 Influence of Cloudiness on Summertime Temperatures in the Eastern Washington Fire Weather district. James Holcomb, April 1979. (PB298674/AS)
- 141 Comparison of LFM and MFM Precipitation Guidance for Nevada During Doreen. Christopher Hill, April 1979. (PB298613/AS)
- 142 The Usefulness of Data from Mountaintop Fire Lookout Stations in Determining Atmospheric Stability. Jonathan W. Corey, April 1979. (PB298899/AS)
- 143 The Depth of the Marine Layer at San Diego as Related to Subsequent Cool Season Precipitation Episodes in Arizona. Ira S. Brenner, May 1979. (PB298817/AS)
- 144 Arizona Cool Season Climatological Surface Wind and Pressure Gradient Study. Ira S. Brenner, May 1979. (PB298900/AS)
- 146 The BART Experiment. Morris S. Webb, October 1979. (PB80 155112)
- 147 Occurrence and Distribution of Flash Floods in the Western Region. Thomas L. Dietrich, December 1979. (PB80 160344)
- 149 Misinterpretations of Precipitation Probability Forecasts. Allan H. Murphy, Sarah Lichtenstein, Baruch Fischhoff, and Robert L. Winkler, February 1980. (PB80 174576)
- 150 Annual Data and Verification Tabulation - Eastern and Central North Pacific Tropical Storms and Hurricanes 1979. Emil B. Gunther and Staff, EPHC, April 1980. (PB80 220486)
- 151 NMC Model Performance in the Northeast Pacific. James E. Overland, PMEL-ERL, April 1980. (PB80 196033)
- 152 Climate of Salt Lake City, Utah. Wilbur E. Figgins, Third Revision January 1987. (PB87 157194/AS)
- 153 An Automatic Lightning Detection System in Northern California. James E. Rea and Chris E. Fontana, June 1980. (PB80 225592)
- 154 Regression Equation for the Peak Wind Gust 6 to 12 Hours in Advance at Great Falls During Strong Downslope Wind Storms. Michael J. Oard, July 1980. (PB91 108367)
- 155 A Raininess Index for the Arizona Monsoon. John H. Ten Harkel, July 1980. (PB81 106494)
- 156 The Effects of Terrain Distribution on Summer Thunderstorm Activity at Reno, Nevada. Christopher Dean Hill, July 1980. (PB81 102501)
- 157 An Operational Evaluation of the Scofield/Oliver Technique for Estimating Precipitation Rates from Satellite Imagery. Richard Ochoa, August 1980. (PB81 108227)
- 158 Hydrology Practicum. Thomas Dietrich, September 1980. (PB81 134033)
- 159 Tropical Cyclone Effects on California. Arnold Court, October 1980. (PB81 133779)
- 160 Eastern North Pacific Tropical Cyclone Occurrences During Intraseasonal Periods. Preston W. Leftwich and Gail M. Brown, February 1981. (PB81 205494)
- 161 Solar Radiation as a Sole Source of Energy for Photovoltaics in Las Vegas, Nevada, for July and December. Darryl Randerson, April 1981. (PB81 224503)
- 162 A Systems Approach to Real-Time Runoff Analysis with a Deterministic Rainfall-Runoff Model. Robert J.C. Burnash and R. Larry Ferral, April 1981. (PB81 224495)
- 163 A Comparison of Two Methods for Forecasting Thunderstorms at Luke Air Force Base, Arizona. LTC Keith R. Cooley, April 1981. (PB81 225393)
- 164 An Objective Aid for Forecasting Afternoon Relative Humidity Along the Washington Cascade East Slopes. Robert S. Robinson, April 1981. (PB81 23078)
- 165 Annual Data and Verification Tabulation. Eastern North Pacific Tropical Storms and Hurricanes 1980. Emil B. Gunther and Staff, May 1981. (PB82 230336)
- 166 Preliminary Estimates of Wind Power Potential at the Nevada Test Site. Howard G. Booth, June 1981. (PB82 127036)
- 167 ARAP User's Guide. Mark Mathewson, July 1981, Revised September 1981. (PB82 196783)
- 168 Forecasting the Onset of Coastal Gales Off Washington-Oregon. John R. Zimmerman and William D. Burton, August 1981. (PB82 127051)
- 169 A Statistical-Dynamical Model for Prediction of Tropical Cyclone Motion in the Eastern North Pacific Ocean. Preston W. Leftwich, Jr., October 1981. (PB82 195298)
- 170 An Enhanced Plotter for Surface Airways Observations. Andrew J. Spry and Jeffrey L. Anderson, October 1981. (PB82 153883)
- 171 Verification of 72-Hour 500-MB Map-Type Predictions. R.F. Quiring, November 1981. (PB82 158098)
- 172 Forecasting Heavy Snow at Wenatchee, Washington. James W. Holcomb, December 1981. (PB82 177783)
- 173 Central San Joaquin Valley Type Maps. Thomas R. Crossan, December 1981. (PB82 196064)
- 174 ARAP Test Results. Mark A. Mathewson, December 1981. (PB82 198103)
- 176 Approximations to the Peak Surface Wind Gusts from Desert Thunderstorms. Darryl Randerson, June 1982. (PB82 253089)
- 177 Climate of Phoenix, Arizona. Robert J. Schmidl, April 1969 (Revised December 1986). (PB87 142063/AS)
- 178 Annual Data and Verification Tabulation. Eastern North Pacific Tropical Storms and Hurricanes 1982. E.B. Gunther, June 1983. (PB85 106078)
- 179 Stratified Maximum Temperature Relationships Between Sixteen Zone Stations in Arizona and Respective Key Stations. Ira S. Brenner, June 1983. (PB83 249904)
- 180 Standard Hydrologic Exchange Format (SHEF) Version I. Phillip A. Pasteries, Vernon C. Bissel, David G. Bennett, August 1983. (PB85 106052)
- 181 Quantitative and Spacial Distribution of Winter Precipitation along Utah's Wasatch Front. Lawrence B. Dunn, August 1983. (PB85 106912)
- 182 500 Millibar Sign Frequency Teleconnection Charts - Winter. Lawrence B. Dunn, December 1983. (PB85 106276)
- 183 500 Millibar Sign Frequency Teleconnection Charts - Spring. Lawrence B. Dunn, January 1984. (PB85 111367)
- 184 Collection and Use of Lightning Strike Data in the Western U.S. During Summer 1983. Glenn Rasch and Mark Mathewson, February 1984. (PB85 110534)
- 185 500 Millibar Sign Frequency Teleconnection Charts - Summer. Lawrence B. Dunn, March 1984. (PB85 111359)
- 186 Annual Data and Verification Tabulation eastern North Pacific Tropical Storms and Hurricanes 1983. E.B. Gunther, March 1984. (PB85 109635)
- 187 500 Millibar Sign Frequency Teleconnection Charts - Fall. Lawrence B. Dunn, May 1984. (PB85 110930)
- 188 The Use and Interpretation of Isentropic Analyses. Jeffrey L. Anderson, October 1984. (PB85 132694)
- 189 Annual Data & Verification Tabulation Eastern North Pacific Tropical Storms and Hurricanes 1984. E.B. Gunther and R.L. Cross, April 1985. (PB85 187887AS)
- 190 Great Salt Lake Effect Snowfall: Some Notes and An Example. David M. Carpenter, October 1985. (PB86 119153/AS)
- 191 Large Scale Patterns Associated with Major Freeze Episodes in the Agricultural Southwest. Ronald S. Hamilton and Glenn R. Lussky, December 1985. (PB86 144474AS)
- 192 NWR Voice Synthesis Project: Phase I. Glen W. Sampson, January 1986. (PB86 145604/AS)
- 193 The MCC - An Overview and Case Study on Its Impact in the Western United States. Glenn R. Lussky, March 1986. (PB86 170651/AS)
- 194 Annual Data and Verification Tabulation Eastern North Pacific Tropical Storms and Hurricanes 1985. E.B. Gunther and R.L. Cross, March 1986. (PB86 170941/AS)
- 195 Radid Interpretation Guidelines. Roger G. Pappas, March 1986. (PB86 177680/AS)
- 196 A Mesoscale Convective Complex Type Storm over the Desert Southwest. Darryl Randerson, April 1986. (PB86 190993/AS)
- 197 The Effects of Eastern North Pacific Tropical Cyclones on the Southwestern United States. Walter Smith, August 1986. (PB87 106258AS)
- 198 Preliminary Lightning Climatology Studies for Idaho. Christopher D. Hill, Carl J. Gorski, and Michael C. Conger, April 1987. (PB87 180196/AS)
- 199 Heavy Rains and Flooding in Montana: A Case for Slantwise Convection. Glenn R. Lussky, April 1987. (PB87 185229/AS)
- 200 Annual Data and Verification Tabulation Eastern North Pacific Tropical Storms and Hurricanes 1986. Roger L. Cross and Kenneth B. Mielke, September 1987. (PB88 110895/AS)
- 201 An Inexpensive Solution for the Mass Distribution of Satellite Images. Glen W. Sampson and George Clark, September 1987. (PB88 114038/AS)
- 202 Annual Data and Verification Tabulation Eastern North Pacific Tropical Storms and Hurricanes 1987. Roger L. Cross and Kenneth B. Mielke, September 1988. (PB88 101938/AS)
- 203 An Investigation of the 24 September 1986 "Cold Sector" Tornado Outbreak in Northern California. John P. Montevedi and Scott A. Braun, October 1988. (PB89 121297/AS)

NOAA SCIENTIFIC AND TECHNICAL PUBLICATIONS

The National Oceanic and Atmospheric Administration was established as part of the Department of Commerce on October 3, 1970. The mission responsibilities of NOAA are to assess the socioeconomic impact of natural and technological changes in the environment and to monitor and predict the state of the solid Earth, the oceans and their living resources, the atmosphere, and the space environment of the Earth.

The major components of NOAA regularly produce various types of scientific and technical information in the following kinds of publications.

PROFESSIONAL PAPERS--Important definitive research results, major techniques, and special investigations.

CONTRACT AND GRANT REPORTS--Reports prepared by contractors or grantees under NOAA sponsorship.

ATLAS--Presentation of analyzed data generally in the form of maps showing distribution of rainfall, chemical and physical conditions of oceans and atmosphere, distribution of fishes and marine mammals, ionospheric conditions, etc.

TECHNICAL SERVICE PUBLICATIONS--Reports containing data, observations, instructions, etc. A partial listing includes data serials; prediction and outlook periodicals; technical manuals, training papers, planning reports, and information serials; and miscellaneous technical publications.

TECHNICAL REPORTS--Journal quality with extensive details, mathematical developments, or data listings.

TECHNICAL MEMORANDUMS--Reports of preliminary, partial, or negative research or technology results, interim instructions, and the like.



Information on availability of NOAA publications can be obtained from:

NATIONAL TECHNICAL INFORMATION SERVICE

U. S. DEPARTMENT OF COMMERCE

5285 PORT ROYAL ROAD

SPRINGFIELD, VA 22161