

NOAA Technical Memorandum NWS WR-233



**STORM RELATIVE ISENTROPIC MOTION ASSOCIATED WITH
COLD FRONTS IN NORTHERN UTAH**

**Kevin B. Baker
Weather Service Office
Elko, Nevada**

**Kathleen A. Hadley
Lawrence B. Dunn
National Weather Service Forecast Office
Salt Lake City, Utah**

July 1995

**U.S. DEPARTMENT OF
COMMERCE**

/ National Oceanic and
Atmospheric Administration

/ National Weather
Service



NOAA TECHNICAL MEMORANDA
National Weather Service, Western Region Subseries

The National Weather Service (NWS) Western Region (WR) Subseries provides an informal medium for the documentation and quick dissemination of results not appropriate, or not yet ready, for formal publication. The series is used to report on work in progress, to describe technical procedures and practices, or to relate progress to a limited audience. These Technical Memoranda will report on investigations devoted primarily to regional and local problems of interest mainly to personnel, and hence will not be widely distributed.

Papers 1 to 25 are in the former series, ESSA Technical Memoranda, Western Region Technical Memoranda (WRTM); papers 24 to 59 are in the former series, ESSA Technical Memoranda, Weather Bureau Technical Memoranda (WBTM). Beginning with 60, the papers are part of the series, NOAA Technical Memoranda NWS. Out-of-print memoranda are not listed.

Papers 2 to 22, except for 5 (revised edition), are available from the National Weather Service Western Region, Scientific Services Division, P.O. Box 11188, Federal Building, 125 South State Street, Salt Lake City, Utah 84147. Paper 5 (revised edition), and all others beginning with 25 are available from the National Technical Information Service, U.S. Department of Commerce, Sills Building, 5285 Port Royal Road, Springfield, Virginia 22161. Prices vary for all paper copies; microfiche are \$3.50. Order by accession number shown in parentheses at end of each entry.

ESSA Technical Memoranda (WRTM)

- 2 Climatological Precipitation Probabilities. Compiled by Lucianne Miller, December 1965.
- 3 Western Region Pre- and Post-FP-3 Program, December 1, 1965, to February 20, 1966. Edward D. Diemer, March 1966.
- 5 Station Descriptions of Local Effects on Synoptic Weather Patterns. Philip Williams, Jr., April 1966 (Revised November 1967, October 1969). (PB-17800)
- 6 Interpreting the RAREP. Herbert P. Benner, May 1966 (Revised January 1967).
- 8 Some Electrical Processes in the Atmosphere. J. Latham, June 1966.
- 17 A Digitalized Summary of Radar Echoes within 100 Miles of Sacramento, California. J. A. Youngberg and L. B. Overaas, December 1966.
- 21 An Objective Aid for Forecasting the End of East Winds in the Columbia Gorge, July through October. D. John Copranis, April 1967.
- 22 Derivation of Radar Horizons in Mountainous Terrain. Roger G. Pappas, April 1967.

ESSA Technical Memoranda, Weather Bureau Technical Memoranda (WBTM)

- 25 Verification of Operation Probability of Precipitation Forecasts, April 1966-March 1967. W. W. Dickey, October 1967. (PB-176240)
- 26 A Study of Winds in the Lake Mead Recreation Area. R. P. Augulis, January 1968. (PB-177830)
- 28 Weather Extremes. R. J. Schmidt, April 1968 (Revised March 1986). (PB86 177672/AS). (Revised October 1991 - PB92-115062/AS)
- 29 Small-Scale Analysis and Prediction. Philip Williams, Jr., May 1968. (PB178425)
- 30 Numerical Weather Prediction and Synoptic Meteorology. CPT Thomas D. Murphy, USAF, May 1968. (AD 673365)
- 31 Precipitation Detection Probabilities by Salt Lake ARTC Radars. Robert K. Belesky, July 1968. (PB 179084)
- 32 Probability Forecasting--A Problem Analysis with Reference to the Portland Fire Weather District. Harold S. Ayer, July 1968. (PB 179289)
- 36 Temperature Trends in Sacramento--Another Heat Island. Anthony D. Lentini, February 1969. (PB 183055)
- 37 Disposal of Logging Residues Without Damage to Air Quality. Owen P. Cramer, March 1969. (PB 183057)
- 39 Upper-Air Lows Over Northwestern United States. A.L. Jacobsen, April 1969. PB 184296)
- 40 The Man-Machine Mix in Applied Weather Forecasting in the 1970s. L.W. Snellman, August 1969. (PB 185068)
- 43 Forecasting Maximum Temperatures at Helena, Montana. David E. Olsen, October 1969. (PB 185762)
- 44 Estimated Return Periods for Short-Duration Precipitation in Arizona. Paul C. Kangieser, October 1969. (PB 187763)
- 46 Applications of the Net Radiometer to Short-Range Fog and Stratus Forecasting at Eugene, Oregon. L. Yee and E. Bates, December 1969. (PB 190476)
- 47 Statistical Analysis as a Flood Routing Tool. Robert J.C. Burnash, December 1969. (PB 188744)
- 48 Tsunami. Richard P. Augulis, February 1970. (PB 190157)
- 49 Predicting Precipitation Type. Robert J.C. Burnash and Floyd E. Hug, March 1970. (PB 190962)
- 50 Statistical Report on Aeroallergens (Pollens and Molds) Fort Huachuca, Arizona, 1969. Wayne S. Johnson, April 1970. (PB 191743)
- 51 Western Region Sea State and Surf Forecaster's Manual. Gordon C. Shields and Gerald B. Burdwell, July 1970. (PB 193102)
- 52 Sacramento Weather Radar Climatology. R.G. Pappas and C. M. Veliquette, July 1970. (PB 193347)
- 54 A Refinement of the Vorticity Field to Delineate Areas of Significant Precipitation. Barry B. Aronovitch, August 1970.
- 55 Application of the SSARR Model to a Basin without Discharge Record. Vail Schermerhorn and Donal W. Kuehl, August 1970. (PB 194394)
- 56 Areal Coverage of Precipitation in Northwestern Utah. Philip Williams, Jr., and Werner J. Heck, September 1970. (PB 194389)
- 57 Preliminary Report on Agricultural Field Burning vs. Atmospheric Visibility in the Willamette Valley of Oregon. Earl M. Bates and David O. Chilcote, September 1970. (PB 194710)
- 58 Air Pollution by Jet Aircraft at Seattle-Tacoma Airport. Wallace R. Donaldson, October 1970. (COM 71 00017)
- 59 Application of PE Model Forecast Parameters to Local-Area Forecasting. Leonard W. Snellman, October 1970. (COM 71 00016)
- 60 An Aid for Forecasting the Minimum Temperature at Medford, Oregon, Arthur W. Fritz, October 1970. (COM 71 00120)
- 63 700-mb Warm Air Advection as a Forecasting Tool for Montana and Northern Idaho. Norris E. Woerner, February 1971. (COM 71 00349)
- 64 Wind and Weather Regimes at Great Falls, Montana. Warren B. Price, March 1971.
- 65 Climate of Sacramento, California. Tony Martini, April 1990. (Fifth Revision) (PB89 207781/AS)
- 66 A Preliminary Report on Correlation of ARTCC Radar Echoes and Precipitation. Wilbur K. Hall, June 1971. (COM 71 00829)
- 69 National Weather Service Support to Soaring Activities. Ellis Burton, August 1971. (COM 71 00056)
- 71 Western Region Synoptic Analysis-Problems and Methods. Philip Williams, Jr., February 1972. (COM 72 10433)
- 74 Thunderstorms and Hail Days Probabilities in Nevada. Clarence M. Sakamoto, April 1972. (COM 72 10564)

- 75 A Study of the Low Level Jet Stream of the San Joaquin Valley. Ronald A. Willis and Philip Williams, Jr., May 1972. (COM 72 10707)
- 76 Monthly Climatological Charts of the Behavior of Fog and Low Stratus at Los Angeles International Airport. Donald M. Gales, July 1972. (COM 72 11140)
- 77 A Study of Radar Echo Distribution in Arizona During July and August. John E. Hales, Jr., July 1972. (COM 72 11136)
- 78 Forecasting Precipitation at Bakersfield, California, Using Pressure Gradient Vectors. Earl T. Riddiough, July 1972. (COM 72 11146)
- 79 Climate of Stockton, California. Robert C. Nelson, July 1972. (COM 72 10920)
- 80 Estimation of Number of Days Above or Below Selected Temperatures. Clarence M. Sakamoto, October 1972. (COM 72 10021)
- 81 An Aid for Forecasting Summer Maximum Temperatures at Seattle, Washington. Edgar G. Johnson, November 1972. (COM 73 10150)
- 82 Flash Flood Forecasting and Warning Program in the Western Region. Philip Williams, Jr., Chester L. Glenn, and Roland L. Rastz, December 1972, (Revised March 1978). (COM 73 10251)
- 83 A comparison of Manual and Semiautomatic Methods of Digitizing Analog Wind Records. Glenn E. Rasch, March 1973. (COM 73 10669)
- 86 Conditional Probabilities for Sequences of Wet Days at Phoenix, Arizona. Paul C. Kangieser, June 1973. (COM 73 11264)
- 87 A Refinement of the Use of K-Values in Forecasting Thunderstorms in Washington and Oregon. Robert Y.G. Lee, June 1973. (COM 73 11276)
- 89 Objective Forecast Precipitation Over the Western Region of the United States. Julia N. Paegle and Larry P. Kierulff, September 1973. (COM 73 11946/3AS)
- 91 Arizona "Eddy" Tornadoes. Robert S. Ingram, October 1973. (COM 73 10465)
- 92 Smoke Management in the Willamette Valley. Earl M. Bates, May 1974. (COM 74 11277/AS)
- 93 An Operational Evaluation of 500-mb Type Regression Equations. Alexander E. MacDonald, June 1974. (COM 74 11407/AS)
- 94 Conditional Probability of Visibility Less than One-Half Mile in Radiation Fog at Fresno, California. John D. Thomas, August 1974. (COM 74 11555/AS)
- 95 Climate of Flagstaff, Arizona. Paul W. Sorenson, and updated by Reginald W. Preston, January 1987. (PB87 143160/AS)
- 96 Map Type Precipitation Probabilities for the Western Region. Glenn E. Rasch and Alexander E. MacDonald, February 1975. (COM 75 10428/AS)
- 97 Eastern Pacific Cut-Off Low of April 21-28, 1974. William J. Alder and George R. Miller, January 1976. (PB 250 711/AS)
- 98 Study on a Significant Precipitation Episode in Western United States. Ira S. Brenner, April 1976. (COM 75 10719/AS)
- 99 A Study of Flash Flood Susceptibility-A Basin in Southern Arizona. Gerald Williams, August 1975. (COM 75 11360/AS)
- 102 A Set of Rules for Forecasting Temperatures in Napa and Sonoma Counties. Wesley L. Tuft, October 1975. (PB 246 902/AS)
- 103 Application of the National Weather Service Flash-Flood Program in the Western Region. Gerald Williams, January 1976. (PB 253 053/AS)
- 104 Objective Aids for Forecasting Minimum Temperatures at Reno, Nevada, During the Summer Months. Christopher D. Hill, January 1976. (PB 252 866/AS)
- 105 Forecasting the Mono Wind. Charles P. Ruscha, Jr., February 1976. (PB 254 650)
- 106 Use of MOS Forecast Parameters in Temperature Forecasting. John C. Plankinton, Jr., March 1976. (PB 254 649)
- 107 Map Types as Aids in Using MOS Pol's in Western United States. Ira S. Brenner, August 1976. (PB 259 594)
- 108 Other Kinds of Wind Shear. Christopher D. Hill, August 1976. (PB 260 437/AS)
- 109 Forecasting North Winds in the Upper Sacramento Valley and Adjoining Forests. Christopher E. Fontana, September 1976. (PB 273 677/AS)
- 110 Cool Inflow as a Weakening Influence on Eastern Pacific Tropical Cyclones. William J. Denney, November 1976. (PB 264 655/AS)
- 112 The MAN/MOS Program. Alexander E. MacDonald, February 1977. (PB 265 941/AS)
- 113 Winter Season Minimum Temperature Formula for Bakersfield, California, Using Multiple Regression. Michael J. Oard, February 1977. (PB 273 694/AS)
- 114 Tropical Cyclone Kathleen. James R. Fors, February 1977. (PB 273 676/AS)
- 116 A Study of Wind Gusts on Lake Mead. Bradley Colman, April 1977. (PB 268 847)
- 117 The Relative Frequency of Cumulonimbus Clouds at the Nevada Test Site as a Function of K-Value. R.F. Quiring, April 1977. (PB 272 831)
- 118 Moisture Distribution Modification by Upward Vertical Motion. Ira S. Brenner, April 1977. (PB 268 740)
- 119 Relative Frequency of Occurrence of Warm Season Echo Activity as a Function of Stability Indices Computed from the Yucca Flat, Nevada, Rawinsonde. Darryl Randerson, June 1977. (PB 271 290/AS)
- 121 Climatological Prediction of Cumulonimbus Clouds in the Vicinity of the Yucca Flat Weather Station. R.F. Quiring, June 1977. (PB 271 704/AS)
- 122 A Method for Transforming Temperature Distribution to Normality. Morris S. Webb, Jr., June 1977. (PB 271 742/AS)
- 124 Statistical Guidance for Prediction of Eastern North Pacific Tropical Cyclone Motion - Part I. Charles J. Neumann and Preston W. Leftwich, August 1977. (PB 272 661)
- 125 Statistical Guidance on the Prediction of Eastern North Pacific Tropical Cyclone Motion - Part II. Preston W. Leftwich and Charles J. Neumann, August 1977. (PB 273 155/AS)
- 126 Climate of San Francisco. E. Jan Null, February 1978. Revised by George T. Pericht, April 1988. (PB88 208624/AS)
- 127 Development of a Probability Equation for Winter-Type Precipitation Patterns in Great Falls, Montana. Kenneth B. Mielke, February 1978. (PB 281 387/AS)
- 128 Hand Calculator Program to Compute Parcel Thermal Dynamics. Dan Gudgel, April 1978. (PB 283 080/AS)
- 129 Fire whirls. David W. Goens, May 1978. (PB 283 866/AS)
- 130 Flash-Flood Procedure. Ralph C. Hatch and Gerald Williams, May 1978. (PB 286 014/AS)
- 131 Automated Fire-Weather Forecasts. Mark A. Mollner and David E. Olsen, September 1978. (PB 289 916/AS)
- 132 Estimates of the Effects of Terrain Blocking on the Los Angeles WSR-74C Weather Radar. R.G. Pappas, R.Y. Lee, B.W. Finke, October 1978. (PB 289767/AS)
- 133 Spectral Techniques in Ocean Wave Forecasting. John A. Jannuzzi, October 1978. (PB291317/AS)
- 134 Solar Radiation. John A. Jannuzzi, November 1978. (PB291195/AS)
- 135 Application of a Spectrum Analyzer in Forecasting Ocean Swell in Southern California Coastal Waters. Lawrence P. Kierulff, January 1979. (PB292716/AS)
- 136 Basic Hydrologic Principles. Thomas L. Dietrich, January 1979. (PB292247/AS)
- 137 LFM 24-Hour Prediction of Eastern Pacific Cyclones Refined by Satellite Images. John R. Zimmerman and Charles P. Ruscha, Jr., January 1979. (PB294324/AS)
- 138 A Simple Analysis/Diagnosis System for Real Time Evaluation of Vertical Motion. Scott Helfick and James R. Fors, February 1979. (PB294216/AS)
- 139 Aids for Forecasting Minimum Temperature in the Wenatchee Frost District. Robert S. Robinson, April 1979. (PB298339/AS)
- 140 Influence of Cloudiness on Summertime Temperatures in the Eastern Washington Fire Weather district. James Holcomb, April 1979. (PB298674/AS)
- 141 Comparison of LFM and MFM Precipitation Guidance for Nevada During Doreen. Christopher Hill, April 1979. (PB298613/AS)

NOAA Technical Memorandum NWS WR-233

**STORM RELATIVE ISENTROPIC MOTION ASSOCIATED WITH
COLD FRONTS IN NORTHERN UTAH**

Kevin B. Baker
Weather Service Office
Elko, Nevada

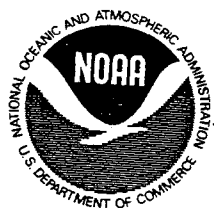
Kathleen A. Hadley
Lawrence B. Dunn
National Weather Service Forecast Office
Salt Lake City, Utah

July 1995

UNITED STATES
DEPARTMENT OF COMMERCE
Ronald H. Brown, Secretary

National Oceanic and
Atmospheric Administration
(Vacant), Under Secretary
and Administrator

National Weather Service
Elbert W. Friday, Jr., Assistant
Administrator for Weather Services



This publication has been reviewed
and is approved for publication by
Scientific Services Division,
Western Region

for Glen W. Sampson
Delain A. Edman, Chief
Scientific Services Division
Salt Lake City, Utah

TABLE OF CONTENTS

I.	Introduction	1
II.	Data and Methods	3
III.	Results	5
IV.	Discussion and Conclusions	6
V.	References	7

TABLE OF FIGURES

- Figure 1a. Early Eta 6-hour forecast valid at 0600 UTC 12 December 1993, Lagrangian case, wind, pressure, pressure advection, on a 305K isentropic surface.
- Figure 1b. As in Figure 1a except for Eulerian case.
- Figure 1c. As in Figure 1a except for relative humidity (tens of %).
- Figure 2a. Early Eta 12-hour forecast valid at 1200 UTC 12 December 1993, Lagrangian case on a 300K isentropic surface, units as in Figure 1a.
- Figure 2b. As in Figure 2a except for Eulerian case.
- Figure 2c. As in Figure 2a except for relative humidity (tens of %).
- Figure 3a. Early Eta 12-hour forecast valid at 0000 UTC 9 February 1994, Lagrangian case on a 295K isentropic surface, units as in Figure 1a.
- Figure 3b. As in Figure 3a except for Eulerian case.
- Figure 3c. As in Figure 3a except for relative humidity (tens of %).
- Figure 4a. Early Eta 12-hour forecast valid at 0000 UTC 12 January 1994, Lagrangian case on a 295K isentropic surface, units as in Figure 1a.
- Figure 4b. As in Figure 4a except for Eulerian case.
- Figure 4c. As in Figure 4a except for relative humidity (tens of %).

STORM RELATIVE ISENTROPIC MOTION ASSOCIATED WITH COLD FRONTS IN NORTHERN UTAH

Kevin B. Baker, Kathleen A. Hadley, Lawrence B. Dunn

ABSTRACT

One of the most difficult forecasting problems for Salt Lake City, Utah is the discrimination between wet and dry cold fronts as these weather systems move into the populated regions on the western slope of the Wasatch Mountains. The intent of this paper is to diagnose isentropic vertical motion associated with winter season cold frontal passages at Salt Lake City from a storm relative (Lagrangian) frame of reference in an attempt to discern wet from dry frontal passages. Lagrangian vertical motions associated with cold frontal passages are compared with conventional fixed frame of reference (Eulerian) isentropic motion. All wet frontal passages at Salt Lake City from November 1993 through January 1994 coincided with upward motion using the Lagrangian isentropic analysis scheme. Only 25 percent of the wet frontal systems were identified by upward motion using conventional Eulerian isentropic analysis. Modern computer technology allows forecasters to examine Lagrangian isentropic motion with PCGRIDDS software applications as was performed for this study.

I. INTRODUCTION

The distinction between cool-season dry and wet cold frontal passages is often difficult to forecast over northern Utah. Many cold fronts and their associated upper-level baroclinic zones move into the populated Wasatch Front from the west and northwest during the winter. These weather systems often produce little or no measurable precipitation as they cross the arid lands upstream from Salt Lake City, while precipitation is frequently observed as they approach the high terrain of the Wasatch Mountains. However, a significant percentage of these systems remain dry as they move through northern Utah. The development of a technique that allows for discrimination between precipitating and non-precipitating frontal systems is the focus of this study.

The approach taken here is the application of isentropic analysis to identify the vertical motion field associated with cold fronts as they move into northern Utah. Isentropic analysis is not new. Rossby et al. (1937) emphasized the advantages of isentropic flow patterns as "a fruitful synthesis of thermodynamic and hydrodynamic methods in air mass analysis." Rossby discusses the conservative properties of air parcels on isentropic surfaces. The intention of his argument was the recommendation that the meteorological community, and specifically the then U.S. Weather Bureau, prepare daily weather and forecast maps on isentropic surfaces, rather than pressure or height surfaces. Namias (1938, 1939) and Neamtan (1944) also demonstrated advantages of using isentropic surfaces rather than pressure surfaces. However,

the 1950's saw a dramatic decrease in the use of isentropic analysis. The meteorological community focused its attention on forecasting pressure patterns on constant height surfaces (Danielsen 1961; Moore 1988).

More recently isentropic surfaces have been used in the interpretation of cloud and precipitation patterns associated with frontal systems. Relative-wind isentropic trajectories were used to explain the familiar comma cloud pattern of wave cyclones (Carlson 1980), and in the dynamic interpretation of clouds and precipitation patterns in extratropical cyclones (Browning 1990). Shutts (1991) analyzed frontal boundaries in Southern England using a vertical cross-section of isentropic surfaces and normal wind components.

Probably due to the ease in recognizing frontal boundaries, isentropic analysis has gained considerable favor by those studying the movement and development of frontal systems (Anderson 1984; Moore 1988; Sanders 1993). "Southerly busters" in Australia were determined to be orographically initiated by using low-level isentropic coordinates (Coulman et al. 1984). The research program Fronts 87 analyzed mesoscale frontal dynamics on various isentropic surfaces (Thorpe 1991).

The 1990's have seen an explosion of meteorological investigations on isentropic surfaces. The recent access to high speed computers and model gridded data by operational forecasters has allowed for the direct application of isentropic theory to daily weather forecasting (Dunn 1993; Zubrick and Thaler 1993; Shea and Przybylinski 1993).

The computer software known as PCGRIDDS is currently being used by many National Weather Service Forecast

Offices to enhance forecasting techniques through the use of model gridded data. The ease of use and the data density provided by model grids has brought application of isentropic analysis back into the realm of operational forecasting. The Washington, D.C. (Sterling) NWS forecast office regularly uses a program that overlays constant mixing ratio lines on isentropic surfaces to forecast precipitation areas (Zubrick and Thaler 1993). The St. Louis NWS Forecast Office has used PCGRIDDS and isentropic surfaces to analyze vertical motions associated with winter storms (Shea and Przybylinski 1993). At the Sterling office, pressure and interpolated winds on isentropic surfaces were used to forecast an early season snowstorm (Gates and Zubrick 1993). The Denver NWS Forecast Office uses an advanced prototype system (MAPS) with a hybrid isentropic/sigma coordinate system (Smith and Benjamin 1993) to derive isentropic potential vorticity fields to forecast developing systems.

Frontal systems and associated synoptic-scale motions produce the majority of precipitation during the winter season at many western U.S. mid-latitude locations, including Salt Lake City. There have been many refinements to the Norwegian cyclone model (Bjerknes 1919; Bjerknes and Solberg 1922) over the years. Anafronts and katafronts, first proposed by Bergeron (1937), expanded on the original Norwegian model. Anafronts have descending cold and ascending warm air currents where the cold air behind the front advances faster than the warm air recedes, while katafronts have descending air on both sides of the front where the warm air ahead of the front recedes faster than the cold air advances. The anafront model best describes the heavier precipitation events, while the katafront model best represents the dry frontal passages.

Browning and Monk (1982) used the visualization of "conveyor-belts" in their refinements to the conceptual model of anafronts and katafronts. In the anafront, the warm southerly conveyor-belt slopes rearward over the advancing cold air behind the surface cold front. In the katafront or "split-front", the conveyor-belt slopes forward away from the surface cold front. The result is an upper-level front out ahead of the surface cold front. Precipitation is often associated with the upper-level front, while the surface front is either completely dry or produces only light showers. Hobbs et al. (1990) suggested a similar model for cold fronts aloft.

Winter precipitation at Salt Lake City is often associated with the passage of an anafront, where the heaviest precipitation falls in the colder air behind the front. Little, if any, precipitation occurs ahead of the boundary. Within the conveyor-belt perspective the wet fronts at Salt Lake City fall into the rearward sloping type. Katafronts are nearly always dry events at Salt Lake City, with subsidence associated with the surface cold front, while the dry low-level conditions in the warm-sector preclude precipitation from the upper-level front. The use of storm-relative isentropic analysis in this study is aimed at discriminating rearward sloping ascent associated with wet anafronts from the descent associated with katafronts. Other frontal types, such as occlusions, have generated major precipitation events, but are often more difficult to diagnose using storm-relative isentropic analysis, and will not be considered in this study.

II. DATA AND METHODS

The concept of "relative wind" isentropic flow (Carlson 1991) has revealed sharply defined boundaries and areas of vertical

motion through frontal systems. Isentropic analysis on a fixed (Eulerian) surface depicts upward motion in areas of warm advection, but usually fails to capture upward motion in regions of neutral or cold advection. Thus, isentropic analysis in the vicinity of cold fronts may benefit by using a storm-relative approach. The "relative wind" isentropic analysis technique places the frame of reference with the weather system (Lagrangian), subtracting out the phase speed of the storm. Proper calculation of storm phase speed requires a steady state situation in which the storm exhibits little or no acceleration (Green et al. 1966). To a rough approximation, the relative wind streamlines act as trajectories.

A total of 20 frontal passages were reviewed from November 1993 through early February 1994. The weather observations (SAO's) at Salt Lake City International Airport were used to verify the time of frontal passage at the surface. The PCGRIDDS data from the Eta model were saved from the model run closest and prior to the frontal passage. Isentropic surfaces, θ , were created for the initial condition (0-hour), 6-hour forecast, and 12-hour forecast of the model covering the time of frontal passage. The isentropes were constructed every 5K, covering a pressure range from about 700 mb to 400 mb. Isentropes below 700 mb were avoided because of intersection with the high model terrain located over the eastern Great Basin and Colorado Rockies.

The phase speed and direction of the weather system was calculated by averaging the 500 mb trough speed and direction and the 700 mb frontal speed and direction between the Eta 0h and 12h forecast charts. Locating the 700 mb frontal position was often subjective, but every attempt was made to choose the position along the leading edge of the thermal

gradient. Using PCGRIDDS, the mean velocity vector (phase speed) of the system was subtracted from the ambient wind field, and resultant winds (Lagrangian) were plotted on the isentropic surface. Pressure advection was calculated from the Lagrangian winds, and overlaid on the isentropic surface chart.

Vertical motion on an isentropic surface is defined by the following equation (Carlson 1991) in an adiabatic environment:

Equation 1

$$\omega_{\theta} = (\partial z / \partial t)_{\theta} + (\mathbf{V}_{\theta} \cdot \nabla_{\theta} p)$$

Terms: 1 2 3

The term on the left-hand side of Eq. 1 (Term 1) is the vertical motion on an isentropic surface with negative values implying ascent. The second term in Eq. 1 accounts for the local height tendency or pressure tendency on an isentropic surface (Moore 1988). This term is assumed to be small for a steady state system, but can be significant in a developmental or decaying weather system. The third term is the pressure advection on an isentropic surface. In a diabatic environment, an additional term must be added to the right-hand side of Eq. 1. This term would account for diabatic heating processes such as latent heat release in a saturated environment and heating from the earth's surface. This additional term is not considered here. However, in a saturated environment the ascent calculated in Eq. 1 would have to be considered a lower limit since latent heating would increase the upward motion.

In a Lagrangian frame of reference, the phase speed of the storm (\mathbf{C}) is subtracted from the actual wind (\mathbf{V}), and the velocity

vector in Eq. 1 becomes $(\mathbf{V}-\mathbf{C})$. If the system is assumed to undergo little or no change in intensity term 2 may be considered small. The resulting equation for omega on an isentropic surface becomes:

Equation 2

$$\cos \omega_{\theta} = (\mathbf{V}-\mathbf{C}) \cdot \nabla_{\theta} \sum p$$

The graphics generated in this study for each case include overlays on an isentropic surface of Lagrangian winds, pressure, and pressure advection. The pressure advection is calculated using the Lagrangian velocity vector $(\mathbf{V}-\mathbf{C})$. The vertical motion can be calculated directly from the pressure advection field as represented in Eq. 2.

The procedure for this process was simplified by the development of a FORTRAN computer program and several PCGRIDDS macros. The first macro shows the 500 mb height and absolute vorticity charts at 6 hour intervals to allow the forecaster to determine the phase speed of the troughs. A second macro displays the 700 mb height and temperature fields at 6 hour intervals to determine the frontal phase speed. The system phase speed is calculated from the average phase speeds of the 500 mb and 700 mb fields. The third macro displays the 700 mb θ field to determine which isentropic surfaces to diagnose, keeping above model terrain. The FORTRAN program prompts the user for the mean forecast phase speed, as just described. It then converts these variables into the units required by PCGRIDDS and inputs the phase speed data into a PCGRIDDS command file. This command file displays the vertical motion due to storm-relative motions on an isentropic

surface. The θ surfaces to be analyzed must be created in PCGRIDDS prior to running the command file produced by FORTRAN. For comparison, another command file is available to display Eulerian isentropic vertical motion. With a little experience, the entire process can be completed in less than two minutes.

III. RESULTS

Of the 20 frontal passages examined in this study, 8 cases verified measurable precipitation at Salt Lake City. Of these 8 wet events, Lagrangian isentropic vertical motion was upward in all 8 cases. Within an Eulerian frame of reference, upward motion was forecast in only 2 of the 8 events. Of the 12 cases where no measurable precipitation (dry front) was recorded, downward or zero vertical motion was forecast nine times using Lagrangian isentropic analysis. From the Eulerian perspective, 10 cases out of 12 showed zero or downward vertical motion. Using Lagrangian winds to calculate vertical motion on isentropic surfaces, no wet events were missed, and only three of the 20 cases (all dry events) were forecast incorrectly.

The heaviest precipitation event occurred on 12 December 1993 and resulted in 0.61 inches. The surface cold front passed Salt Lake City about 1000 UTC on the 12th, with a system phase speed estimated from 290° at 16 m s^{-1} .

The 6-hour forecast charts from the Eta model valid at 0600 UTC 12 December are shown in Figs. 1a through 1c. The storm relative winds, pressure, and pressure advection fields are depicted on the 305K isentropic surface in Fig. 1a. The actual winds (Eulerian), pressure, and pressure advection fields on the 305K isentrope are shown in Fig. 1b. The relative humidity

field for the same isentropic surface is presented in Fig. 1c.

The pressure advection, which is equivalent to $(-1 * \omega)$, is displayed with solid lines for upward motion (positive) and dashed lines for downward motion (negative). Upward motion is evident over eastern Nevada and western Utah (Fig. 1a), and the relative humidity is greater than 90 percent (Fig. 1c). The strongest upward motion was denoted by the "bulls-eye" over east-central Nevada and over southern Arizona. Dynamic lift and abundant moisture were evident at midlevels in the atmosphere over Salt Lake City. The lower 300K isentropic surface was chosen at the 12-hour forecast time (1200 UTC) as colder air began to move across Utah from the west. Figs. 2a through 2c are similar to Fig. 1a through 1c, but are valid 6 hours later for the 300K isentrope. The Lagrangian vertical motion field predicted upward motion over western Utah (Fig. 2a) with the maximum ascent over northwest Utah. As in Fig. 1b, the Eulerian vertical motion field (Fig. 2b) showed descending motion.

A comparison between Figs. 1a and 1b, as well as 2a and 2b, show a major difference between vertical motion computations. The values in Figs. 1a and 2a were greater than $2 \mu\text{b s}^{-1}$ with upward motion, while the Eulerian isentropic graphics (Figs. 1b and 2b) indicated descending motion. In this case, the Lagrangian isentropic motion correlated well with the actual weather situation.

Another frontal passage that verified measurable precipitation is displayed in Figs. 3a through 3c. The event occurred 8 February 1994, and was different than the previous case in that the system was splitting as it moved inland from the Pacific Ocean. The cold front passed Salt Lake City around 0800 UTC on the 8th,

and dropped 0.35 inches of precipitation. The phase velocity was calculated to be from 320° at 12 m s^{-1} , but this must be considered a rough estimate as the system split and slowed.

The charts (Figs. 3a through 3c) are valid for 1200 UTC on the 8th with a format similar to Figs. 1a through 1c. The upward motion shown on the Lagrangian isentropic chart is near $1 \mu\text{b s}^{-1}$ (Fig. 3a), but the Eulerian chart indicated weak downward motion (Fig. 3b). The forecast relative humidity was near 90 percent (Fig. 3c).

A case of a dry frontal passage is presented in Figs. 4a through 4c. The case occurred on 11 January 1994, with the cold front passing Salt Lake City around 2100 UTC. The phase velocity was from 340° at 14 m s^{-1} . The Lagrangian isentropic motion was computed as downward at greater than $1 \mu\text{b s}^{-1}$ (Fig. 4a), and the Eulerian motion was weakly downward with a value near zero (Fig. 4b). The forecast relative humidity was near 90 percent (Fig. 4c), thus a nearly saturated airmass was expected with the frontal passage. The high humidity could have argued for a wet forecast without a thorough investigation of the vertical motion field.

The possibility of error resulting from inaccurate phase speed calculations were explored by varying the FORTRAN program inputs. Little change in results was seen with a slow moving system (15 knots or less) when the direction was varied by ± 10 degrees. With a fast moving system the direction of movement is much more important, and more precise approximation of phase speed is required.

IV. DISCUSSION AND CONCLUSION

Pressure is proportional to temperature on an isentropic surface (Moore 1988), and

warm advection (positive pressure advection) indicates upward motion. One of the disadvantages of Eulerian isentropic analysis is the poor depiction of upward motion behind anafronts where precipitation frequently occurs. The region behind the anafront is often characterized by cold advection and downward motion from the Eulerian perspective. Lagrangian isentropic analysis has shown better results at identifying post-frontal areas of precipitation and upward motion. Comparing Fig. 2a with 2b (wet frontal system) illustrates the differences. The Lagrangian perspective showed upward motion at Salt Lake City (warm advection) while the Eulerian perspective had weak downward motion (cold advection).

Storm relative (Lagrangian) isentropic analysis has shown promising results, improving over the conventional fixed-frame (Eulerian) isentropic analysis technique. Centers of strongest upward motion were often co-located with areas of maximum precipitation.

The type of front is an important consideration for forecasting precipitation at Salt Lake City. The isentropic analysis technique demonstrated in this paper should provide forecasters with a new tool for examining frontal structure and associated vertical motions. Upon determining the front type, the forecaster can apply the precipitation patterns associated with the conceptual frontal models to the actual meteorological situation.

Although only 20 cases from a four month period have been examined, the results are quite encouraging. Given the difficult problem of discriminating between wet and dry cold fronts in the complex terrain of northern Utah, the calculation of Lagrangian vertical motion on isentropic surfaces correctly identified all 8 wet

events, and 9 of the 12 dry events. The FORTRAN program and PCGRIDDS macros developed allow the forecaster to interactively apply this technique in a matter of minutes. Extension of this study is required to determine its utility in the warm season, and to obtain more cases from the next cool season.

V. REFERENCES

- Anderson, J. L., 1984: The use and interpretation of isentropic analyses. NOAA Tech.Memo.NWS WR-188, 40 pp.
- Bjerknes, J., 1919: On the structure of moving cyclones. *Geofys. Publ.*, **1**, No. 1, 1-8.
- Bjerknes, J. and H. Solberg, 1922: Life cycle of cyclones and the polar front theory of atmospheric circulation. *Geofys. Publ.*, **3**, No. 1, 1-18.
- Bergeron, T., 1937: On the physics of fronts. *Bull. Amer. Meteor. Soc.*, **18**, 265-275.
- Browning, K. A. and G. A. Monk, 1982: A simple model for the synoptic analysis of cold fronts. *Quart. J. Roy. Meteor. Soc.*, **108**, 435-452.
- Browning, K. A., 1990: Organization of clouds and precipitation in extratropical cyclones. *Extratropical Cyclones: The Erik Palmén Memorial Volume*, C. W. Newton and E. O. Holopainen, Eds., Amer. Meteor. Soc., 129-153.
- Carlson, T. N., 1980: Airflow through midlatitude cyclones and the comma cloud pattern. *Mon. Wea. Rev.*, **108**, 1498-1509.
- Carlson, T. N., 1991: *Mid-latitude weather systems*. Harper Collins Academic, N.Y., 507 pp.
- Coulman, C. E., J. R. Colquhoun, R. K. Smith, and K. McInnes, 1984: Orographically-forced cold fronts - mean structure and motion. *Bound.-Layer Meteor.*, **32**, 57-83.
- Danielsen, E. F., 1961: Trajectories: Isobaric, isentropic, and actual. *J. Meteor.*, **18**, 479-486.
- Dunn, L. B., 1993: Modern usage of numerical guidance for 6-48 hour operational forecasts. *13th Conf. on Weather Analysis and Forecasting - including Symposium on Flash Floods*, Vienna, VA, Amer. Meteor. Soc., 33-34.
- Gates, C. and S. Zubrick, 1993: PC-GRIDDS as a supplement to standard NGM guidance. *13th Conf. on Weather Analysis and Forecasting - including Symposium on Flash Floods*, Vienna, VA, Amer. Meteor. Soc., 79-85.
- Green, S. A., F. H. Ludlam, and J. F. R. McIlveen, 1966: Isentropic relative-flow analysis and the parcel theory. *Quart. J. Roy. Meteor. Soc.*, **92**, 210-219.
- Hobbs, P. V., F. D. Locatelli, and J. E. Martin, 1990: Cold front aloft and the forecasting of precipitation and severe weather east of the Rocky Mountains. *Wea. Forecasting*, **5**, 613-626.
- Moore, J. T. 1988: *Isentropic analysis and interpretation: Operational applications to synoptic and mesoscale forecast problems*. St. Louis University, 84 pp.
- Namias, J., 1938: Thunderstorm forecasting with the aid of isentropic charts. *Bull. Amer. Meteor. Soc.*, **19**, 1-14.
- Namias, J., 1939: The use of isentropic analysis in short term forecasting. *J. Aeronat. Sci.*, **5**, 295-298.

Neamtan, S.M., 1944: Pressure tendencies and stability changes in an isentropic surface. *Bull. Amer. Meteor. Soc.*, **25**, 127-136.

Rosby, C. G., et al., 1937: Isentropic analysis. *Bull. Amer. Meteor. Soc.*, **18**, 201-210.

Sanders, F., 1993: A not-quite new approach to frontal analysis. *13th Conf. on Weather Analysis and Forecasting - including Symposium on Flash Floods*, Vienna, VA, Amer. Meteor. Soc., 21-24.

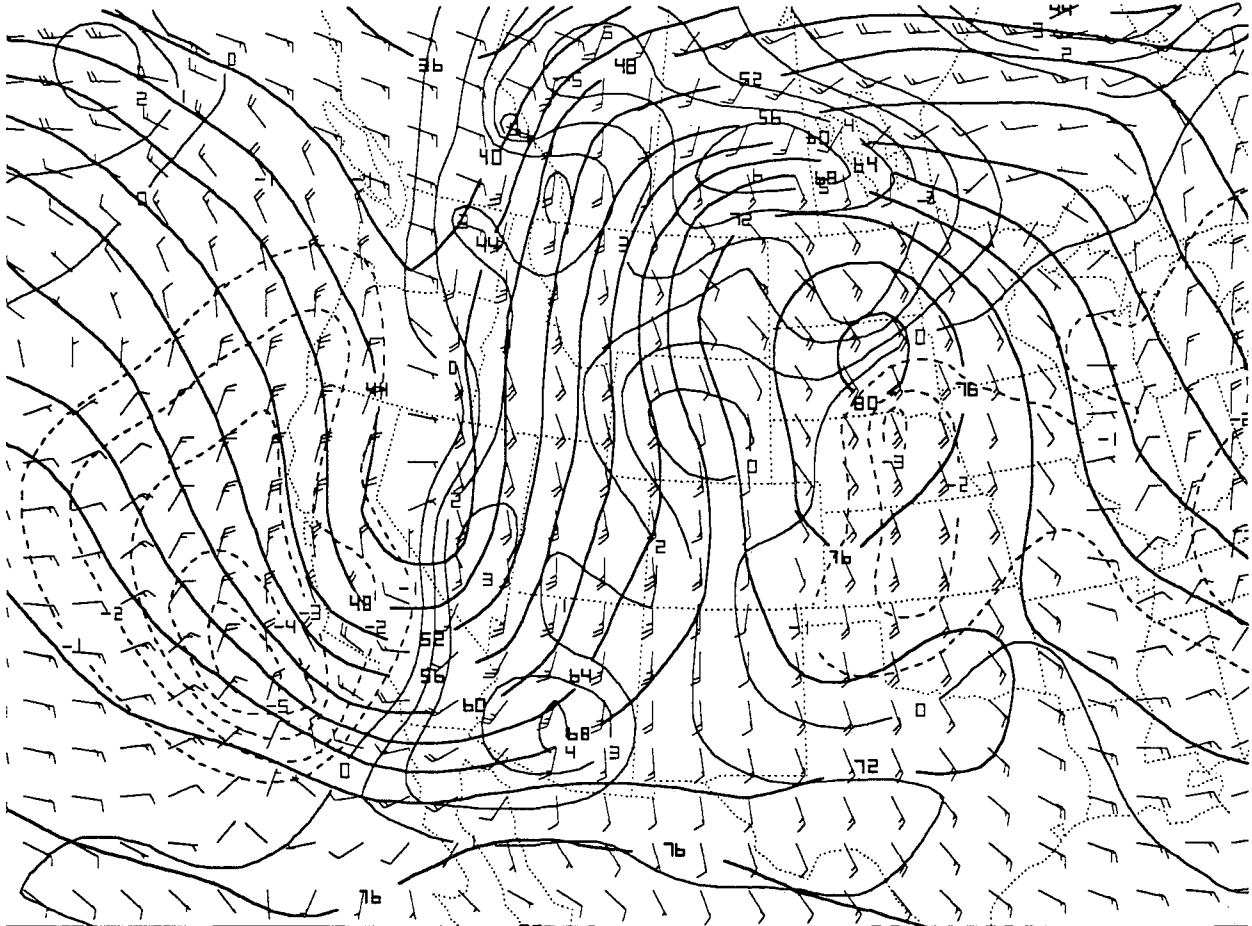
Shea, T. J. and R. W. Przybylinski, 1993: Assessing vertical motion fields in a winter storm using PC-GRIDDS. *13th Conf. on Weather Analysis and Forecasting - including Symposium on Flash Floods*, Vienna, VA, Amer. Meteor. Soc., 10-14.

Shutts, G., 1991: Mesoscale dynamics of fronts using observations from Fronts 87. *First Int. Symp. on Winter Storms*, New Orleans, Amer. Meteor. Soc., 27-30.

Smith, T. L. and S. G. Benjamin, 1993: A severe winter storm as described by a real-time isentropic-sigma data assimilation system. *13th Conf. on Weather Analysis and Forecasting - including Symposium on Flash Floods*, Vienna, VA, Amer. Meteor. Soc., 1-4.

Thorpe, A. J., 1991: Mesoscale dynamics of fronts using observations from Fronts 87. *First Int. Symp. on Winter Storms*, New Orleans, Amer. Meteor. Soc., 23-26.

Zubrick, S. M. and E. Thaler, 1993: Enhancements to the operational forecast process using gridded model data. *13th Conf. on Weather Analysis and Forecasting - including Symposium on Flash Floods*, Vienna, VA, Amer. Meteor. Soc., 5-9.



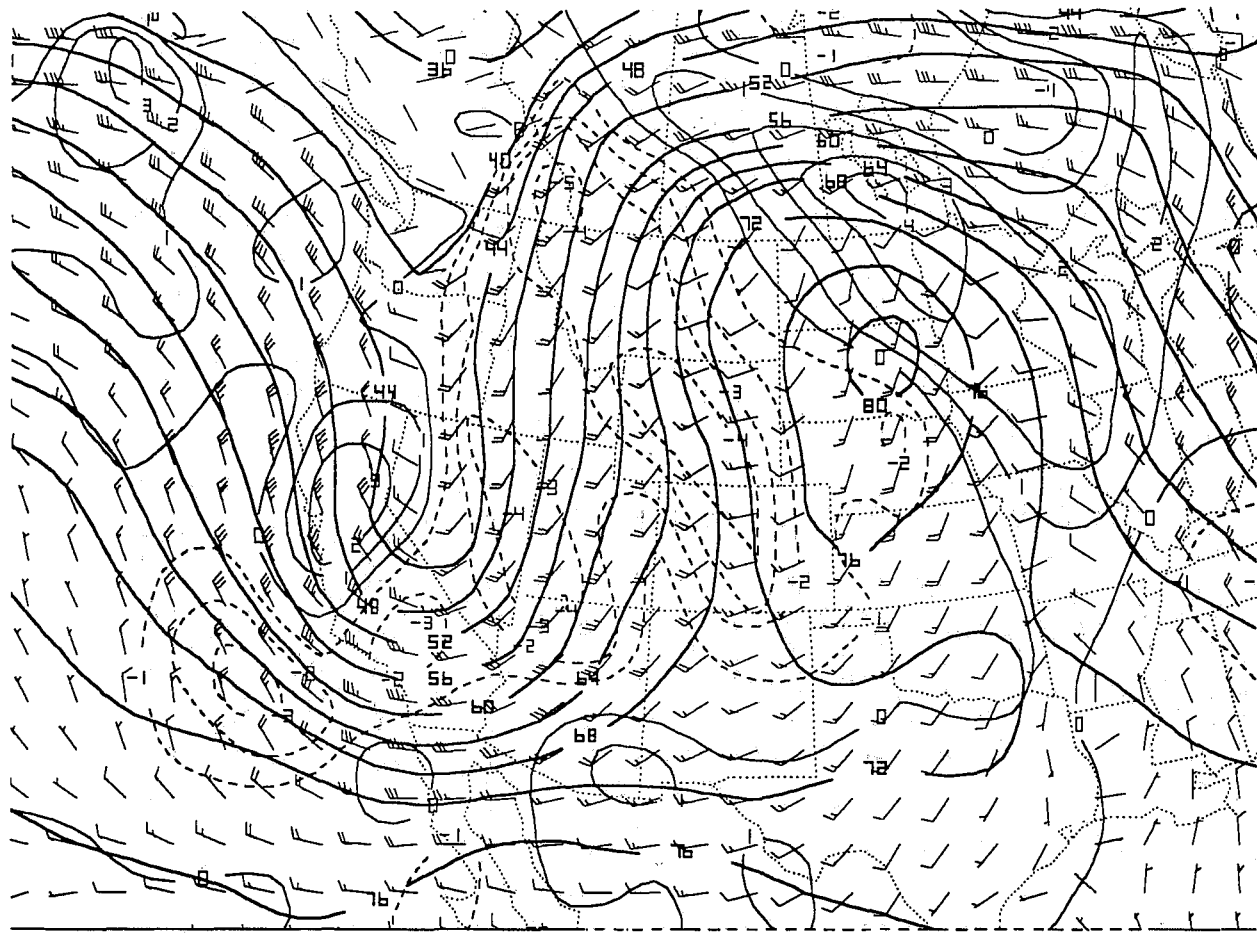
ETAX:LVL=I305:LYR=1000/ 500:FHR= 6 :FHRS= 0/ 12::FILE=de129300.etx
 93/12/12/ 0--SSBC -5.6 VGRD

ETAX:LVL=I305:LYR=1000/ 500:FHR= 6 :FHRS= 0/ 12::FILE=de129300.etx
 93/12/12/ 0--ADVT PRES KEPV CI-3 DNEG&

ETAX:LVL=I305:LYR=1000/ 500:FHR= 6 :FHRS= 0/ 12::FILE=de129300.etx
 93/12/12/ 0--PRES CI40&

Figure 1a.

Early Eta 6-hour forecast valid at 0600 UTC 12 December 1993,
 Lagrangian case, wind, pressure, pressure advection, on a 305K
 isentropic surface.



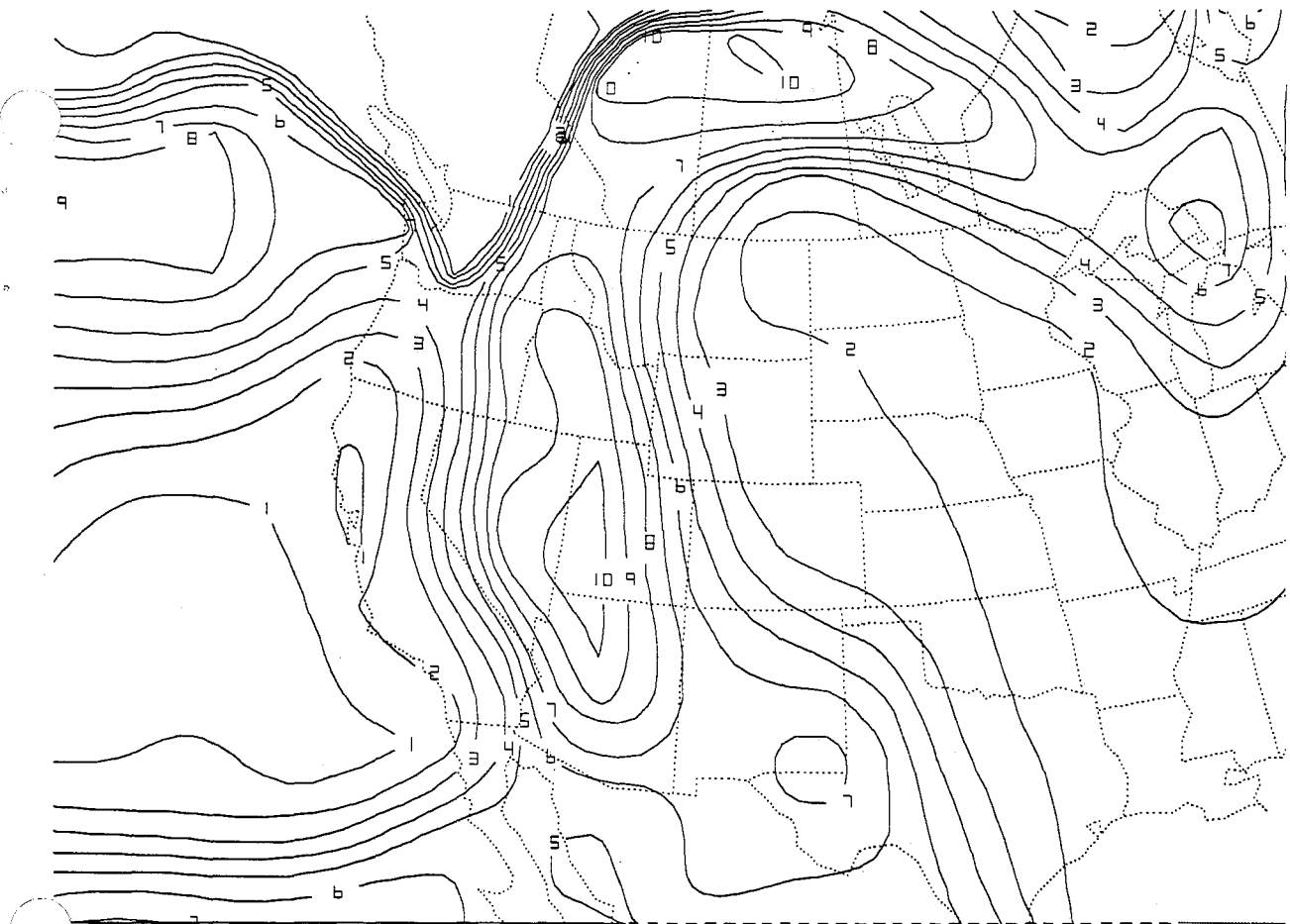
ETAX:LVL=I305:LYR=1000/ 500:FHR= 6 :FHRS= 0/ 12::FILE=de129300.etx
93/12/12/ 0--WIND

ETAX:LVL=I305:LYR=1000/ 500:FHR= 6 :FHRS= 0/ 12::FILE=de129300.etx
93/12/12/ 0--ADVT PRES WIND C1-3 DNEG&

ETAX:LVL=I305:LYR=1000/ 500:FHR= 6 :FHRS= 0/ 12::FILE=de129300.etx
93/12/12/ 0--PRES CI40&

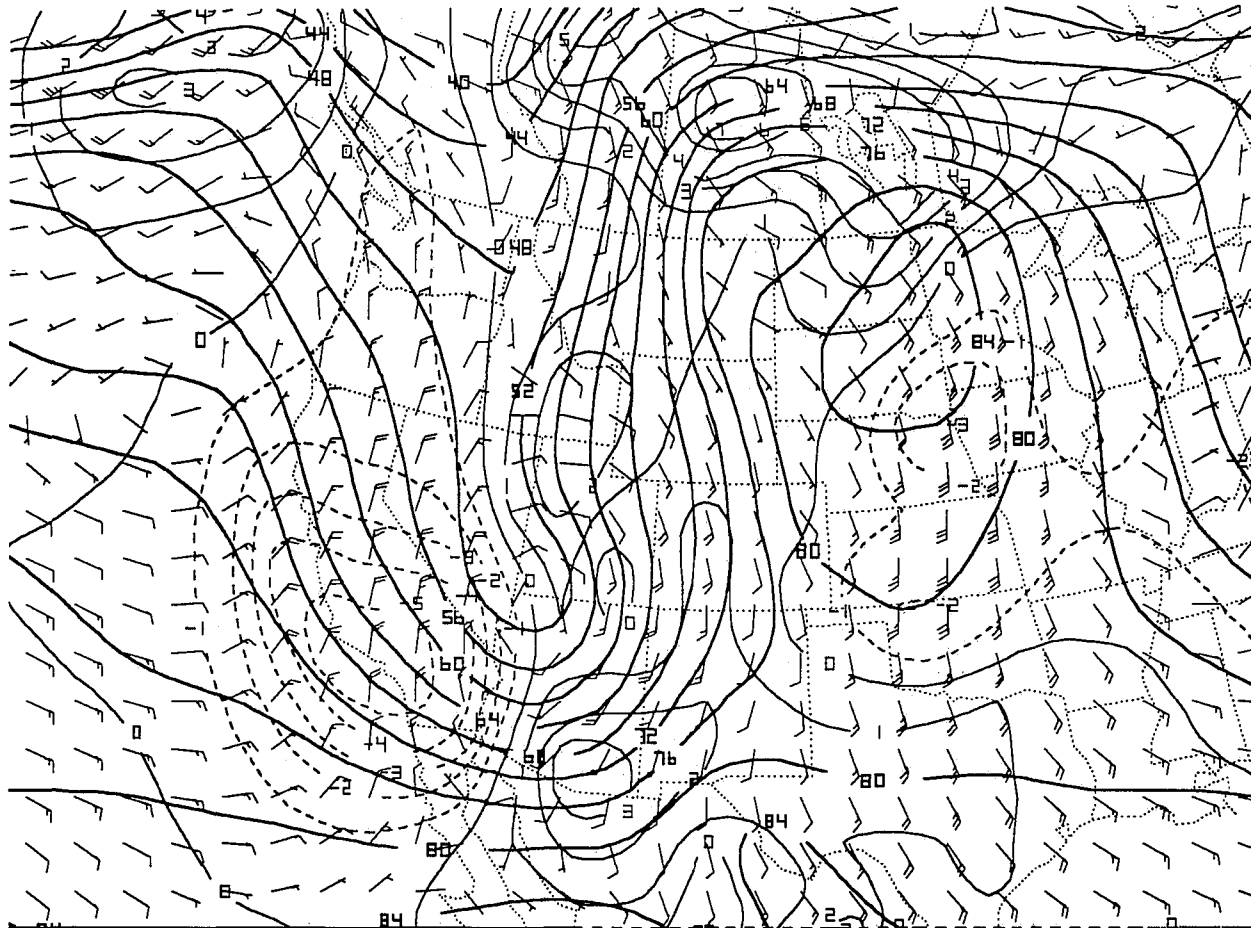
Figure 1b.

As in Figure 1a except for Eulerian case.



ETAX:LVL=I305:LYR=1000/ 500:FHR= 6 :FHRS= 0/ 12::FILE=de129300.etx
93/12/12/ 0--RELH

Figure 1c. As in Figure 1a except for relative humidity (tens of %).



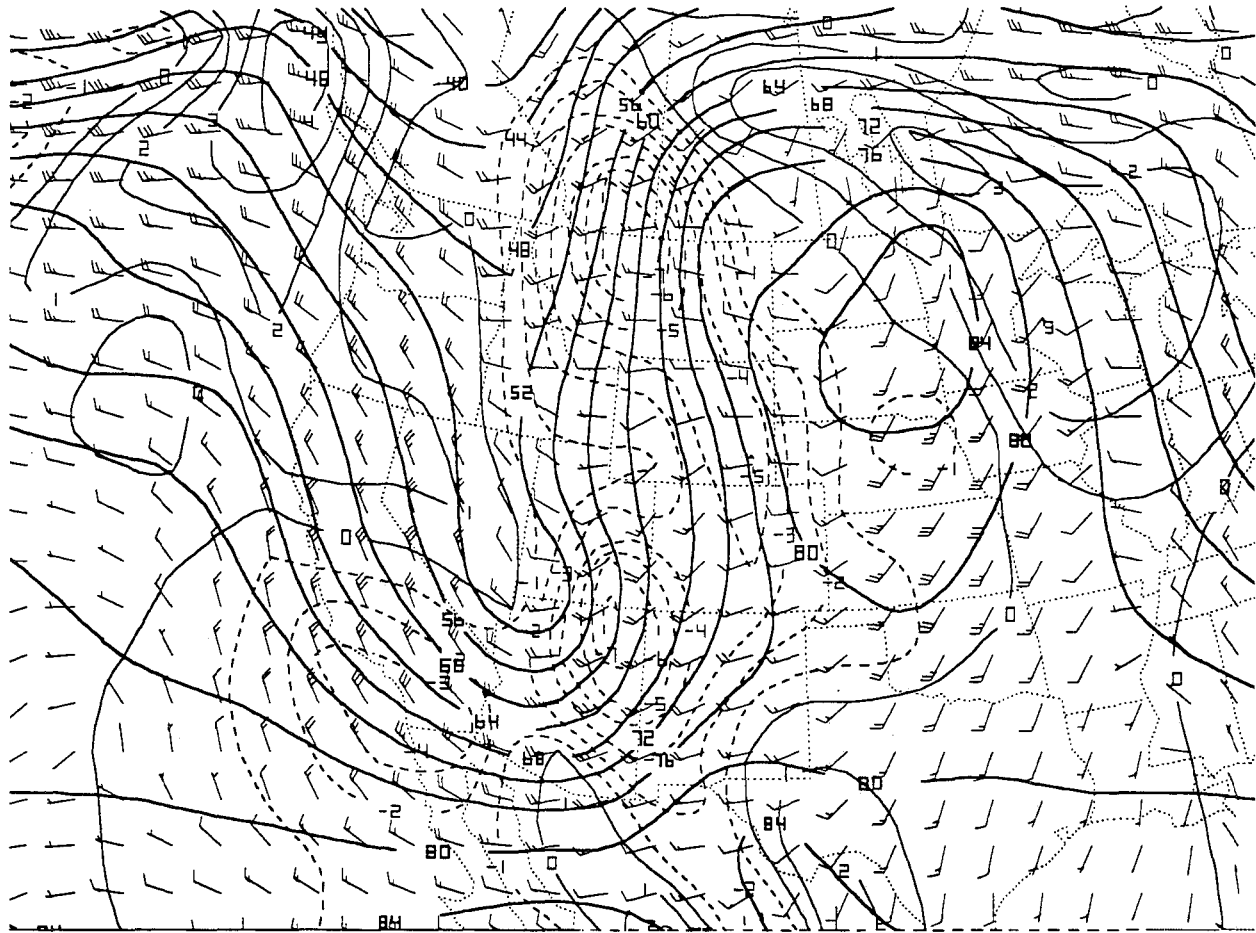
ETAX:LVL=I300:LYR=1000/ 500:FHR= 12 :FHR= 0/ 12::FILE=de129300.etx
 93/12/12/ 0--SSBC -5.6 VGRD

ETAX:LVL=I300:LYR=1000/ 500:FHR= 12 :FHR= 0/ 12::FILE=de129300.etx
 93/12/12/ 0--ADVT PRES KEPV CI-3 DNEG&

ETAX:LVL=I300:LYR=1000/ 500:FHR= 12 :FHR= 0/ 12::FILE=de129300.etx
 93/12/12/ 0--PRES CI40&

Figure 2a.

Early Eta 12-hour forecast valid at 1200 UTC 12 December 1993,
 Lagrangian case on a 300K isentropic surface, units as in
 Figure 1a.



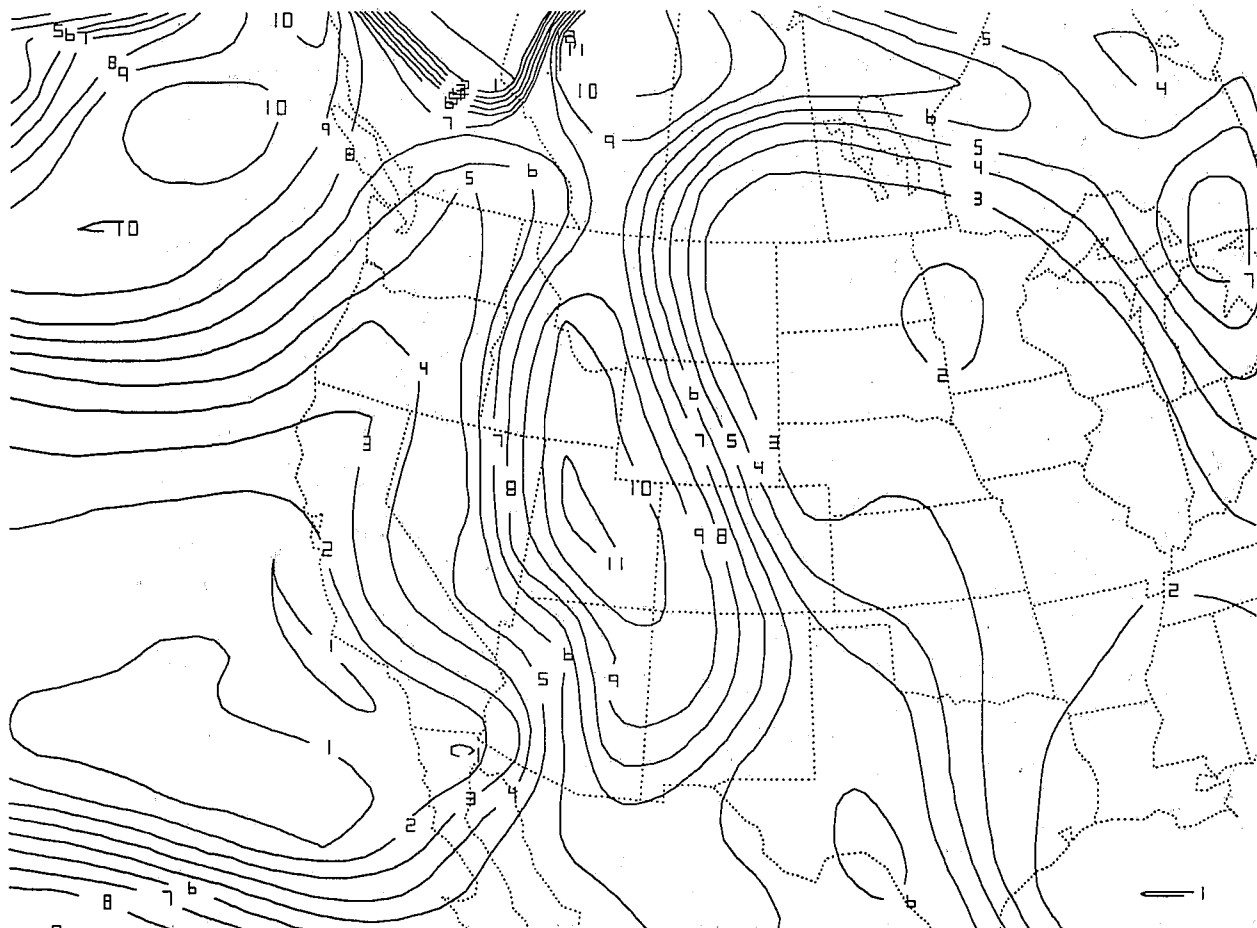
ETAX:LVL=I300:LYR=1000/ 500:FHR= 12 :FHRS= 0/ 12::FILE=de129300.etx
 93/12/12/ 0--WIND

ETAX:LVL=I300:LYR=1000/ 500:FHR= 12 :FHRS= 0/ 12::FILE=de129300.etx
 93/12/12/ 0--ADVT PRES WIND C1-3 DNEG&

ETAX:LVL=I300:LYR=1000/ 500:FHR= 12 :FHRS= 0/ 12::FILE=de129300.etx
 93/12/12/ 0--PRES CI40&

Figure 2b.

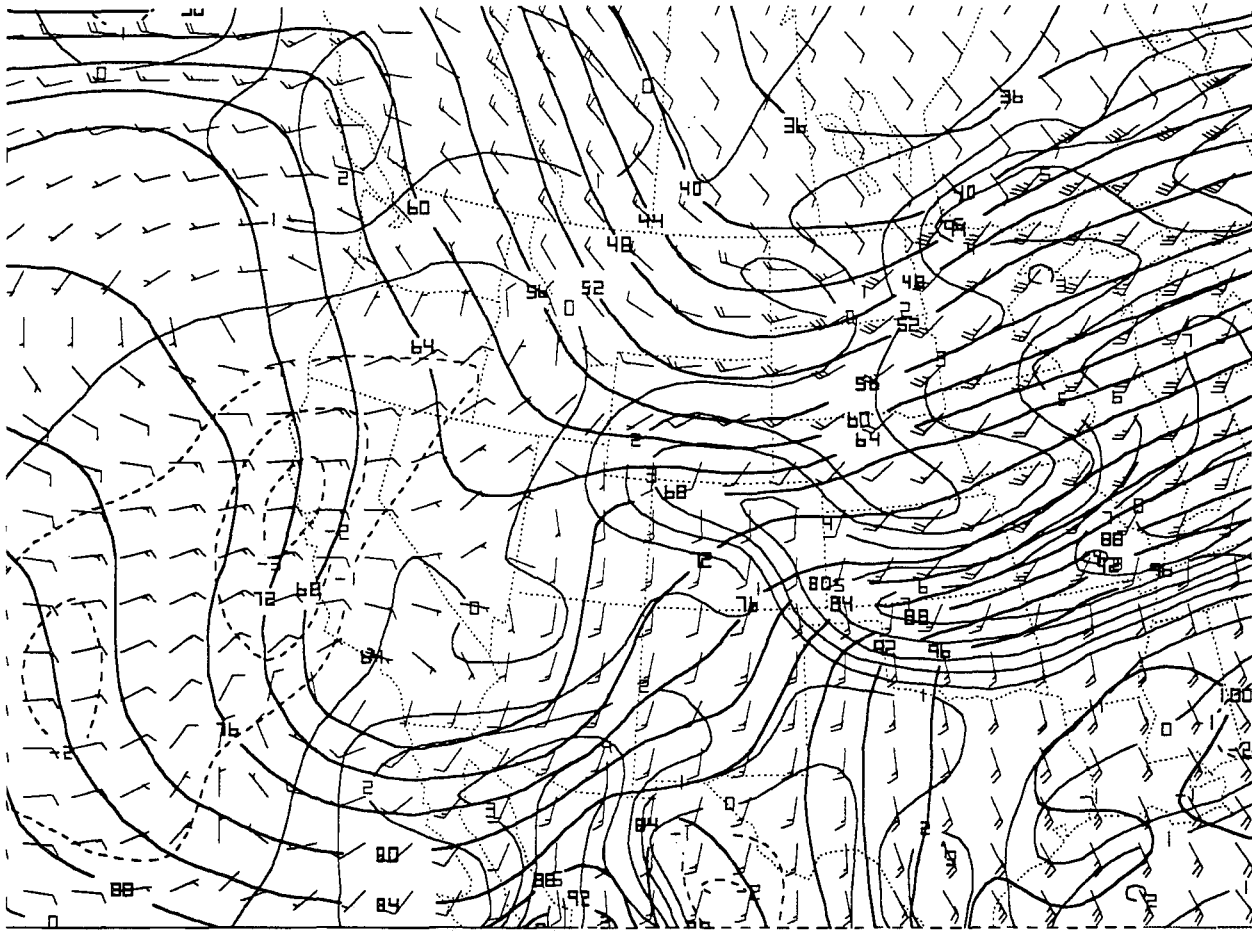
As in Figure 2a except for Eulerian case.



ETAX:LVL=I300:LYR=1000/ 500:FHR= 12 :FHRS= 0/ 12::FILE=de129300.etx
93/12/12/ 0--RELH

Figure 2c.

As in Figure 2a except for relative humidity (tens of %).



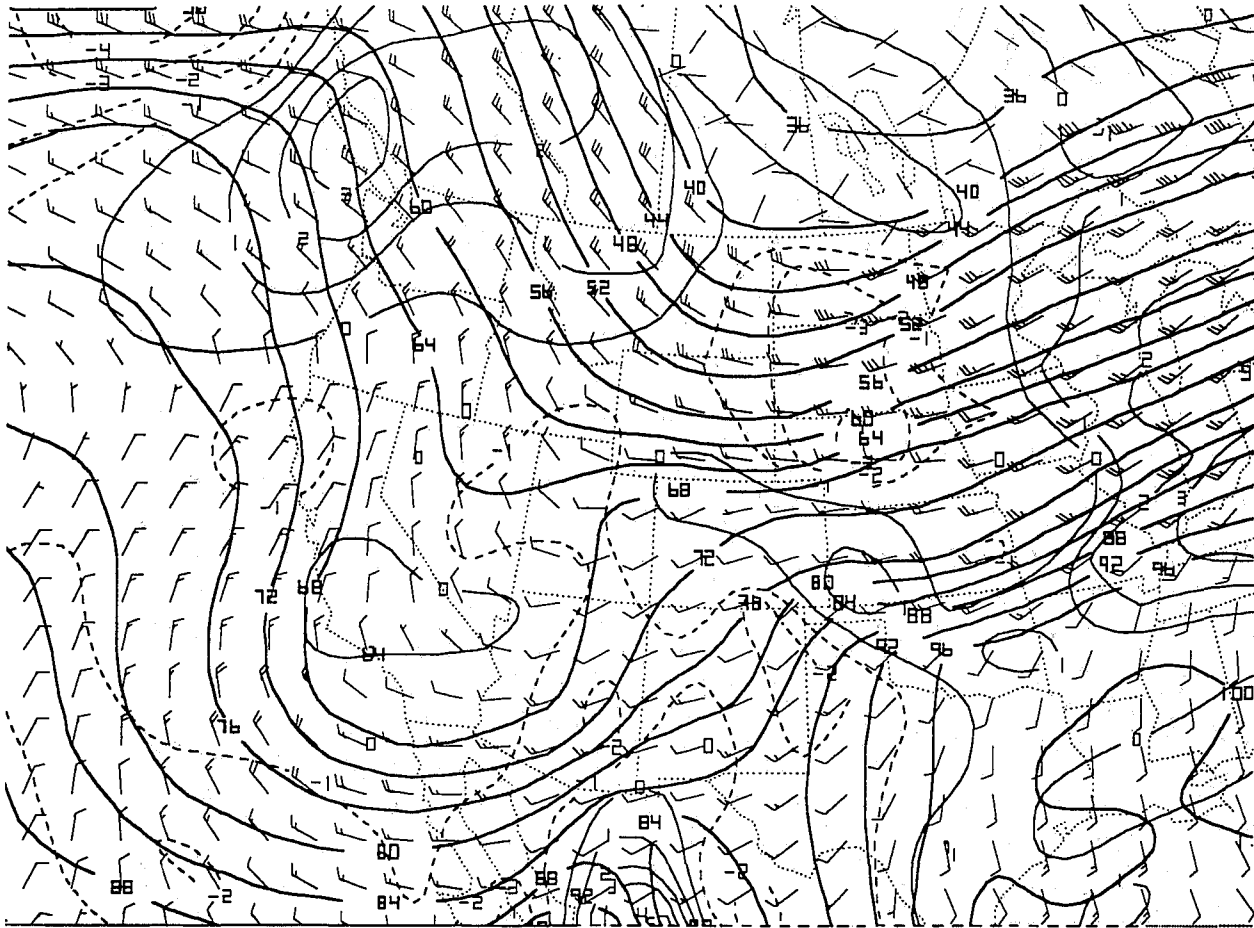
ETAX:LVL=I295:LYR=1000/ 500:FHR= 12 :FHRS= 0/ 12::FILE=FE089412.ETX
 94/ 2/ 8/12--SSBC -9.1 VGRD

ETAX:LVL=I295:LYR=1000/ 500:FHR= 12 :FHRS= 0/ 12::FILE=FE089412.ETX
 94/ 2/ 8/12--ADVT PRES KEPV CI-3 DNEG&

ETAX:LVL=I295:LYR=1000/ 500:FHR= 12 :FHRS= 0/ 12::FILE=FE089412.ETX
 94/ 2/ 8/12--PRES CI40&

Figure 3a.

Early Eta 12-hour forecast valid at 0000 UTC 9 February 1994,
 Lagrangian case on a 295K isentropic surface, units as in
 Figure 1a.

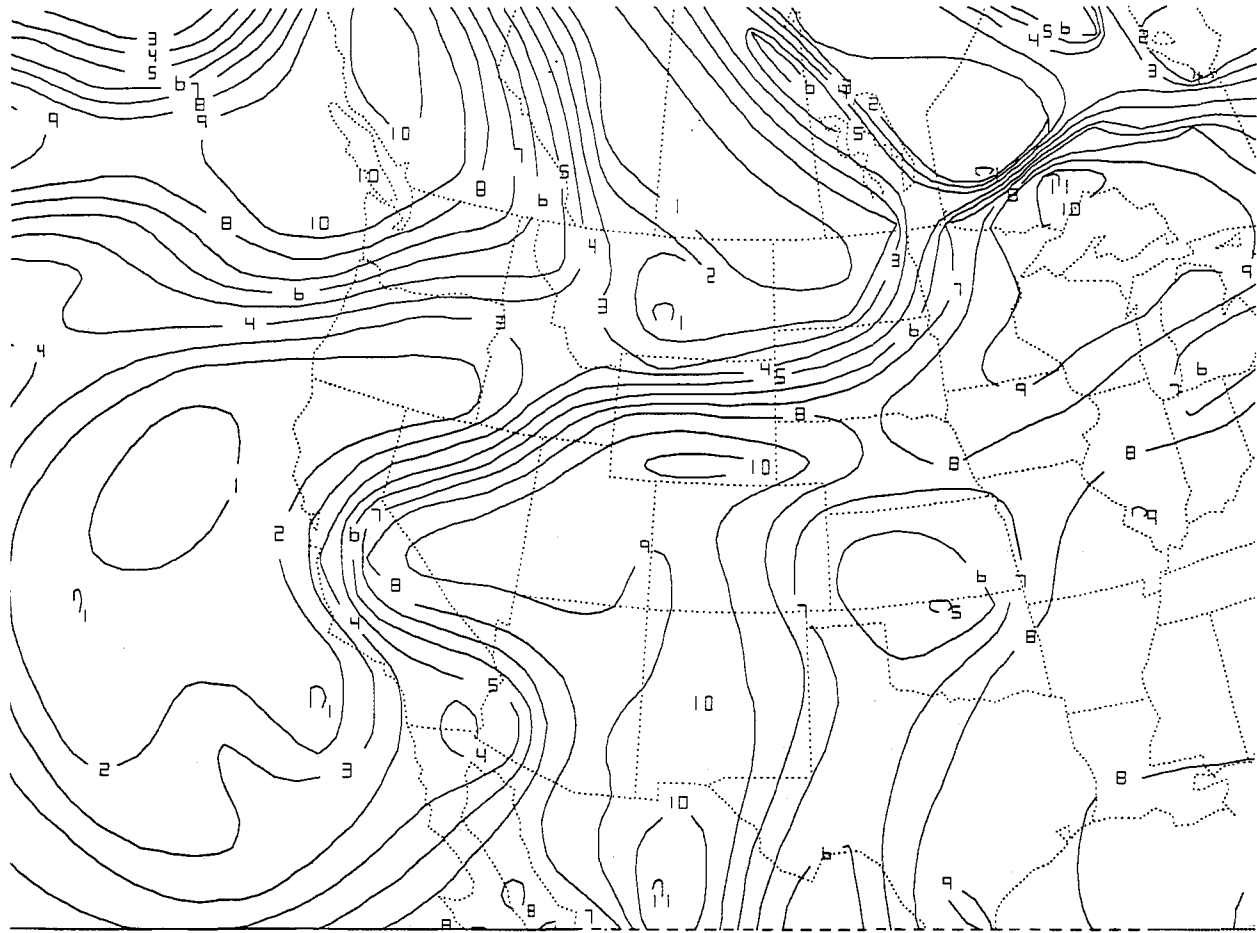


ETAX:LVL=I295:LYR=1000/ 500:FHR= 12 :FHRS= 0/ 12::FILE=FE089412.ETX
 94/ 2/ 8/12--WIND

ETAX:LVL=I295:LYR=1000/ 500:FHR= 12 :FHRS= 0/ 12::FILE=FE089412.ETX
 94/ 2/ 8/12--ADVT PRES WIND C1-3 DNEG&

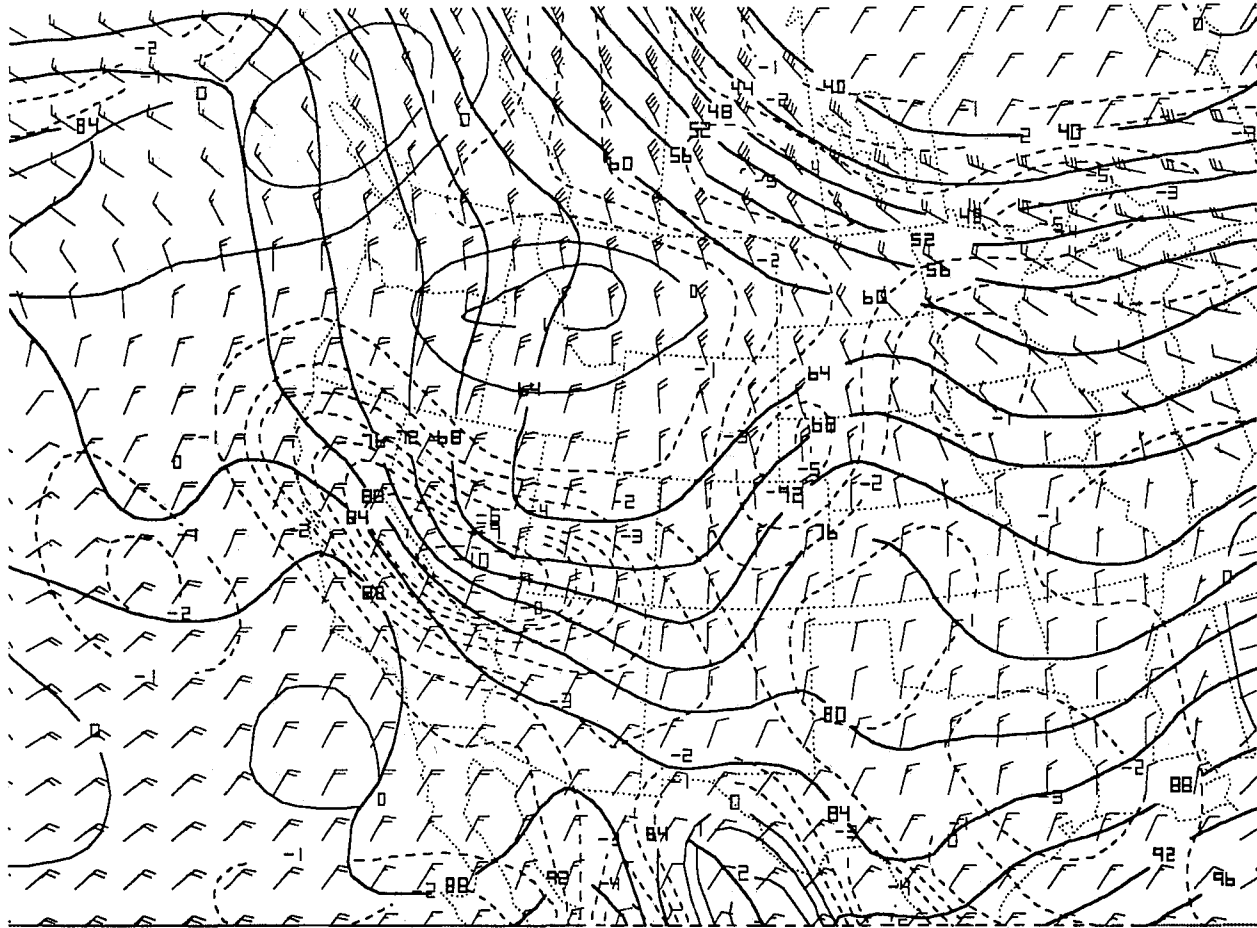
ETAX:LVL=I295:LYR=1000/ 500:FHR= 12 :FHRS= 0/ 12::FILE=FE089412.ETX
 94/ 2/ 8/12--PRES CI40&

Figure 3b. As in Figure 3a except for Eulerian case.



ETAX:LVL=I295:LYR=1000/ 500:FHR= 12 :FHR= 0/ 12::FILE=FE089412.ETX
94/ 2/ 8/12--RELH

Figure 3c. As in Figure 3a except for relative humidity (tens of %).

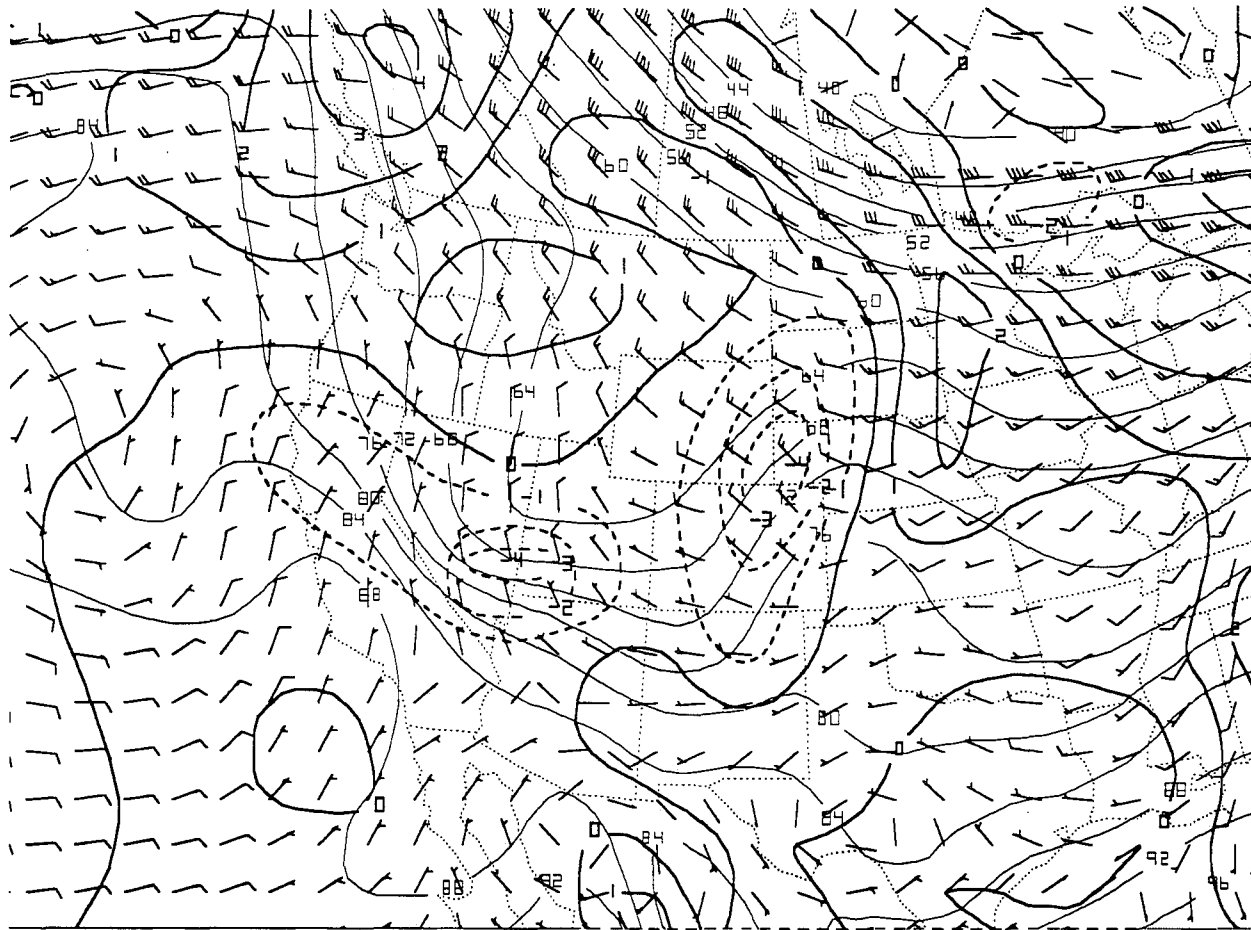


ETAX:LVL=I295:LYR=1000/ 500:FHR= 12 :FHRS= 0/ 12::FILE=JA119412.ETX
 94/ 1/11/12--SSBC-12.0 VGRD

ETAX:LVL=I295:LYR=1000/ 500:FHR= 12 :FHRS= 0/ 12::FILE=JA119412.ETX
 94/ 1/11/12--ADVT PRES KEPV C1-3 DNEG&

ETAX:LVL=I295:LYR=1000/ 500:FHR= 12 :FHRS= 0/ 12::FILE=JA119412.ETX
 94/ 1/11/12--PRES CI40&

Figure 4a. Early Eta 12-hour forecast valid at 0000 UTC 12 January 1994, Lagrangian case on a 295K isentropic surface, units as in Figure 1a.



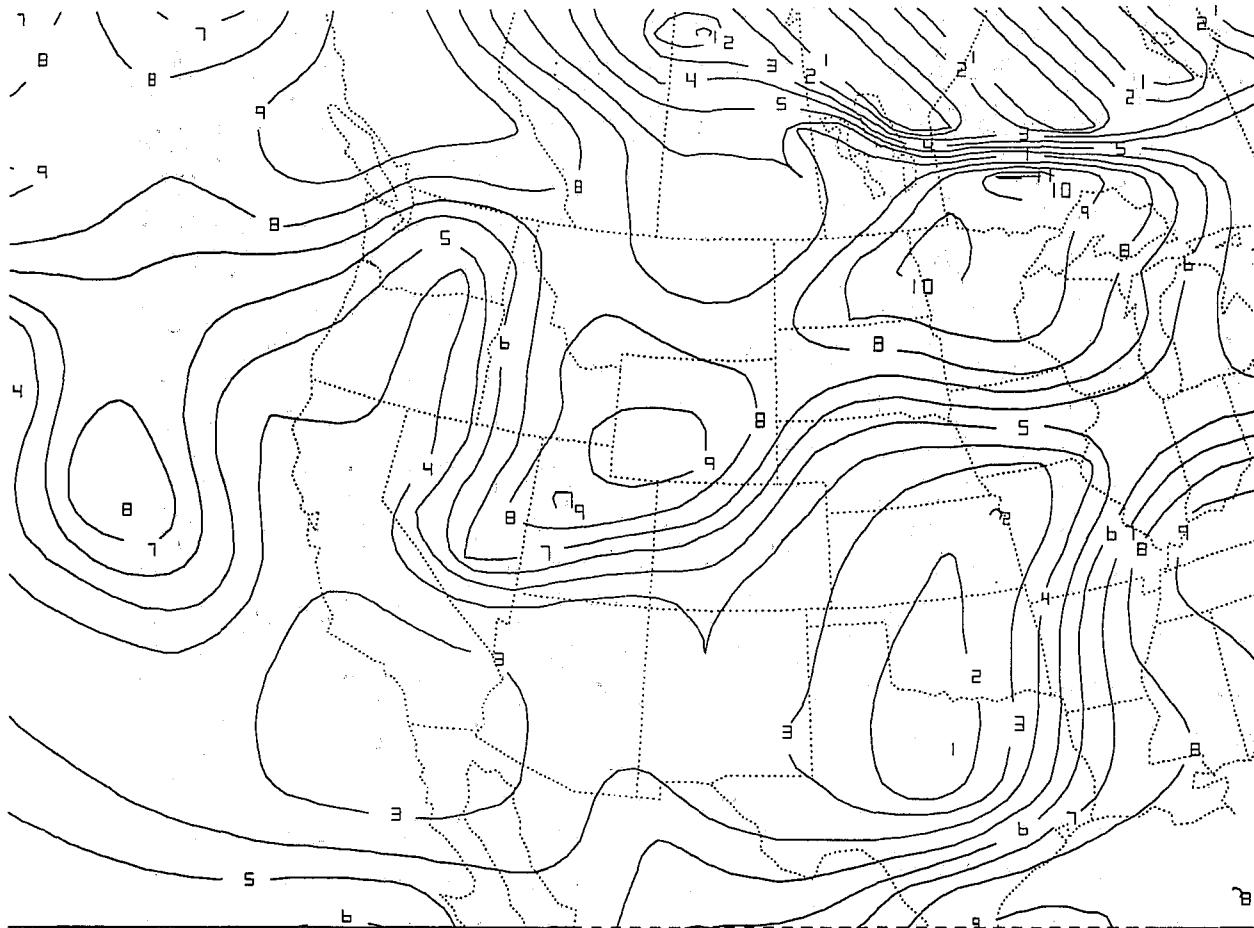
ETAX:LVL=I295:LYR=1000/ 500:FHR= 12 :FHRS= 0/ 12::FILE=JA119412.ETX
94/ 1/11/12--PRES CI40

ETAX:LVL=I295:LYR=1000/ 500:FHR= 12 :FHRS= 0/ 12::FILE=JA119412.ETX
94/ 1/11/12--WIND BARB&

ETAX:LVL=I295:LYR=1000/ 500:FHR= 12 :FHRS= 0/ 12::FILE=JA119412.ETX
94/ 1/11/12--PADV DNEG CINX&

Figure 4b.

As in Figure 4a except for Eulerian case.



ETAX:LVL=I295:LYR=1000/ 500:FHR= 12 :FHRS= 0/ 12::FILE=JA119412.ETX
94/ 1/11/12--RELH CINX

Figure 4c. As in Figure 4a except for relative humidity (tens of %).

APPENDIX

```

C   PROGRAM WRITTEN BY KATHLEEN HADLEY, MARCH 1994
C   METEOROLOGIST/INTERN AT THE NATIONAL WEATHER
C   SERVICE FORECAST OFFICE IN SALT LAKE CITY, UT.
C
C   THIS PROGRAM PROMPTS FOR THE INPUT OF STORM
C   RELATIVE MOTION AND THEN CREATES A COMMAND FILE
C   TO RUN A PCGRIDS APPLICATION THAT WILL ADVECT
C   THE STORM MOTION ONTO AND ISENTROPIC FIELD.
C
C   AT THE TIME THE PROGRAM WAS WRITTEN, LIMITATIONS
C   TO PCGRIDS REQUIRED THAT THE ISENTROPIC FIELD BE
C   CREATED PRIOR TO RUNNING THIS PROGRAM.
C
C   PROGRAM VARIABLES:  DD = DIRECTION, FF = SPEED
C                       DDRAD = THE DIRCTION IN RADIANS
C                       FFMETER = THE SPEED IN METERS PER SECOND
C                       U & V = COMPONENTS OF THE DDFD
C                       INTU & INTV = ROUNDED INTEGERS OF THE U AND V
C                                   COMPONENTS USED WHEN THE VALUES
C                                   ARE -10 OR LESS TO MAINTAIN AN
C                                   OUTPUT FIELD OF ONLY 4 CHARACTERS
C                                   OR SPACES (REQUIRED BY PCGRIDS)
C
C
C   INTEGER DD*4, FF*4, INTU*4, INTV*4
C   REAL DDRAD*8, FFMETER*8, U*8, V*8
C   CHARACTER ANSWER*1
C   PARAMETER (PI = 3.14159)
C   OPEN (UNIT=20, FILE='ISES.CMD', STATUS='NEW')
C
C   WRITE (*,2)
C   2   FORMAT ('1')
C   1   WRITE (*,11)
C   11  FORMAT ('1 ENTER STORM RELATIVE DIRECTION USING COMPASS',/,
C             +   ' POINTS (i.e. A STORM MOVING FROM THE WEST',/,
C             +   ' WOULD BE ENTERED 270).... '\)
C   READ (*,5) DD
C   5   FORMAT (I4)
C   WRITE (*,2)
C   WRITE (*,12)
C   12  FORMAT ('1 ENTER STORM RELATIVE SPEED IN KNOTS.... '\)
C   READ (*,5) FF
C   WRITE (*,2)
C   10  FORMAT (//////////)
C   WRITE (*,15) FF, DD
C   15  FORMAT ('1 YOU ENTERED A STORM RELATIVE FLOW OF',I4,'
C   KNOTS',/,
C             +   ' FROM A DIRECTION OF',I4,' DEGREES.',//)
C   WRITE (*,*) ' IS THIS DATA CORRECT? TYPE N OR n TO
C   RE-ENTER, '
C   WRITE (*,*) ' OR HIT ANY OTHER KEY TO CONTINUE.'
C   READ (*,20) ANSWER
C   20  FORMAT (A1)
C   WRITE (*,10)

```

APPENDIX

```

WRITE (*,10)
IF (ANSWER.EQ.'N'.OR.ANSWER.EQ.'n') GOTO 1
C
C
C
CONVERSION TO METERS/SEC AND RADIANS
C
C
FFMETER = FF * .515
DDRAD = (DD * PI)/180.
C
C
C
DETERMINE THE U AND V COMPONENTS
C
C
U = (-FFMETER) * SIN(DDRAD)
V = (-FFMETER) * COS(DDRAD)
C
C
C
DETERMINE WHICH WRITE ROUTINE TO USE
C
C
IF(U.LE.-10.AND.V.LE.-10) GOTO 133
C
IF(U.LE.-10) GOTO 143
IF(V.LE.-10) GOTO 153
C
WRITE (20,30) U, V
30 FORMAT ('LOOP',/, 'BARB',/, 'CONT SSBC',F5.1, ' UGRD',/,
+         'SSBC',F5.1, ' VGRD',/, 'ADVT PRES KEPV CI-3 DNEG/'
+         ,/, 'PRES CI40/',/, 'ENDL')
CLOSE(UNIT=20)
GOTO 100
133 INTU = NINT(U)
INTV = NINT(V)
WRITE (20,33) INTU, INTV
33 FORMAT ('LOOP',/, 'BARB',/, 'CONT SSBC',I5, ' UGRD',/,
+         'SSBC',I5, ' VGRD',/, 'ADVT PRES KEPV CI-3 DNEG/'
+         ,/, 'PRES CI40/',/, 'ENDL')
CLOSE(UNIT=20)
GOTO 100
C
143 INTU = NINT(U)
WRITE (20,34) INTU, V
34 FORMAT ('LOOP',/, 'BARB',/, 'CONT SSBC',I5, ' UGRD',/,
+         'SSBC',F5.1, ' VGRD',/, 'ADVT PRES KEPV CI-3 DNEG/'
+         ,/, 'PRES CI40/',/, 'ENDL')
CLOSE(UNIT=20)
GOTO 100
C
153 INTV = NINT(V)
WRITE (20,35) U, INTV
35 FORMAT ('LOOP',/, 'BARB',/, 'CONT SSBC',F5.1, ' UGRD',/,
+         'SSBC',I5, ' VGRD',/, 'ADVT PRES KEPV CI-3 DNEG/'
+         ,/, 'PRES CI40/',/, 'ENDL')
CLOSE(UNIT=20)
GOTO 100
100 CONTINUE
END

```

- 142 The Usefulness of Data from Mountaintop Fire Lookout Stations in Determining Atmospheric Stability. Jonathan W. Corey, April 1979. (PB298899/AS)
- 143 The Depth of the Marine Layer at San Diego as Related to Subsequent Cool Season Precipitation Episodes in Arizona. Ira S. Brenner, May 1979. (PB298817/AS)
- 144 Arizona Cool Season Climatological Surface Wind and Pressure Gradient Study. Ira S. Brenner, May 1979. (PB298900/AS)
- 146 The BART Experiment. Morris S. Webb, October 1979. (PB80 155112)
- 147 Occurrence and Distribution of Flash Floods in the Western Region. Thomas L. Dietrich, December 1979. (PB80 160344)
- 149 Misinterpretations of Precipitation Probability Forecasts. Allan H. Murphy, Sarah Lichtenstein, Baruch Fischhoff, and Robert L. Winkler, February 1980. (PB80 174576)
- 150 Annual Data and Verification Tabulation - Eastern and Central North Pacific Tropical Storms and Hurricanes 1979. Emil B. Gunther and Staff, EPHC, April 1980. (PB80 220486)
- 151 NMC Model Performance in the Northeast Pacific. James E. Overland, PMEL-ERL, April 1980. (PB80 196033)
- 152 Climate of Salt Lake City, Utah. Wilbur E. Figgins (Retired) and Alexander R. Smith, Fifth Revision, July 1992. (PB92 220177)
- 153 An Automatic Lightning Detection System in Northern California. James E. Rea and Chris E. Fontana, June 1980. (PB80 225592)
- 154 Regression Equation for the Peak Wind Gust 6 to 12 Hours in Advance at Great Falls During Strong Downslope Wind Storms. Michael J. Oard, July 1980. (PB91 108367)
- 155 A Raininess Index for the Arizona Monsoon. John H. Ten Harkel, July 1980. (PB81 106494)
- 156 The Effects of Terrain Distribution on Summer Thunderstorm Activity at Reno, Nevada. Christopher Dean Hill, July 1980. (PB81 102501)
- 157 An Operational Evaluation of the Scofield/Oliver Technique for Estimating Precipitation Rates from Satellite Imagery. Richard Ochoa, August 1980. (PB81 108227)
- 158 Hydrology Practicum. Thomas Dietrich, September 1980. (PB81 134033)
- 159 Tropical Cyclone Effects on California. Arnold Court, October 1980. (PB81 133779)
- 160 Eastern North Pacific Tropical Cyclone Occurrences During Intraseasonal Periods. Preston W. Leftwich and Gail M. Brown, February 1981. (PB81 205494)
- 161 Solar Radiation as a Sole Source of Energy for Photovoltaics in Las Vegas, Nevada, for July and December. Darryl Randerson, April 1981. (PB81 224503)
- 162 A Systems Approach to Real-Time Runoff Analysis with a Deterministic Rainfall-Runoff Model. Robert J.C. Burnash and R. Larry Ferral, April 1981. (PB81 224495)
- 163 A Comparison of Two Methods for Forecasting Thunderstorms at Luke Air Force Base, Arizona. LTC Keith R. Cooley, April 1981. (PB81 225393)
- 164 An Objective Aid for Forecasting Afternoon Relative Humidity Along the Washington Cascade East Slopes. Robert S. Robinson, April 1981. (PB81 23078)
- 165 Annual Data and Verification Tabulation, Eastern North Pacific Tropical Storms and Hurricanes 1980. Emil B. Gunther and Staff, May 1981. (PB82 230336)
- 166 Preliminary Estimates of Wind Power Potential at the Nevada Test Site. Howard G. Booth, June 1981. (PB82 127036)
- 167 ARAP User's Guide. Mark Mathewson, July 1981, Revised September 1981. (PB82 196783)
- 168 Forecasting the Onset of Coastal Gales Off Washington-Oregon. John R. Zimmerman and William D. Burton, August 1981. (PB82 127051)
- 169 A Statistical-Dynamical Model for Prediction of Tropical Cyclone Motion in the Eastern North Pacific Ocean. Preston W. Leftwich, Jr., October 1981. (PB82 195298)
- 170 An Enhanced Plotter for Surface Airways Observations. Andrew J. Spry and Jeffrey L. Anderson, October 1981. (PB82 153883)
- 171 Verification of 72-Hour 500-MB Map-Type Predictions. R.F. Quiring, November 1981. (PB82 158098)
- 172 Forecasting Heavy Snow at Wenatchee, Washington. James W. Holcomb, December 1981. (PB82 177783)
- 173 Central San Joaquin Valley Type Maps. Thomas R. Crossan, December 1981. (PB82 196064)
- 174 ARAP Test Results. Mark A. Mathewson, December 1981. (PB82 198103)
- 176 Approximations to the Peak Surface Wind Gusts from Desert Thunderstorms. Darryl Randerson, June 1982. (PB82 253089)
- 177 Climate of Phoenix, Arizona. Robert J. Schmidli, April 1969 (Revised December 1986). (PB87 142063/AS)
- 178 Annual Data and Verification Tabulation, Eastern North Pacific Tropical Storms and Hurricanes 1982. E.B. Gunther, June 1983. (PB85 106078)
- 179 Stratified Maximum Temperature Relationships Between Sixteen Zone Stations in Arizona and Respective Key Stations. Ira S. Brenner, June 1983. (PB83 249904)
- 180 Standard Hydrologic Exchange Format (SHEF) Version I. Phillip A. Pasteris, Vernon C. Bissel, David G. Bennett, August 1983. (PB85 106052)
- 181 Quantitative and Spatial Distribution of Winter Precipitation along Utah's Wasatch Front. Lawrence B. Dunn, August 1983. (PB85 106912)
- 182 500 Millibar Sign Frequency Teleconnection Charts - Winter. Lawrence B. Dunn, December 1983. (PB85 106276)
- 183 500 Millibar Sign Frequency Teleconnection Charts - Spring. Lawrence B. Dunn, January 1984. (PB85 111367)
- 184 Collection and Use of Lightning Strike Data in the Western U.S. During Summer 1983. Glenn Rasch and Mark Mathewson, February 1984. (PB85 110534)
- 185 500 Millibar Sign Frequency Teleconnection Charts - Summer. Lawrence B. Dunn, March 1984. (PB85 111359)
- 186 Annual Data and Verification Tabulation eastern North Pacific Tropical Storms and Hurricanes 1983. E.B. Gunther, March 1984. (PB85 109635)
- 187 500 Millibar Sign Frequency Teleconnection Charts - Fall. Lawrence B. Dunn, May 1984. (PB85 110930)
- 188 The Use and Interpretation of Isentropic Analyses. Jeffrey L. Anderson, October 1984. (PB85 132694)
- 189 Annual Data & Verification Tabulation Eastern North Pacific Tropical Storms and Hurricanes 1984. E.B. Gunther and R.L. Cross, April 1985. (PB85 1878887/AS)
- 190 Great Salt Lake Effect Snowfall: Some Notes and An Example. David M. Carpenter, October 1985. (PB86 119153/AS)
- 191 Large Scale Patterns Associated with Major Freeze Episodes in the Agricultural Southwest. Ronald S. Hamilton and Glenn R. Luskky, December 1985. (PB86 144474/AS)
- 192 NWR Voice Synthesis Project: Phase I. Glen W. Sampson, January 1986. (PB86 145604/AS)
- 193 The MCC - An Overview and Case Study on Its Impact in the Western United States. Glenn R. Luskky, March 1986. (PB86 170651/AS)
- 194 Annual Data and Verification Tabulation Eastern North Pacific Tropical Storms and Hurricanes 1985. E.B. Gunther and R.L. Cross, March 1986. (PB86 170941/AS)
- 195 Rapid Interpretation Guidelines. Roger G. Pappas, March 1986. (PB86 177680/AS)
- 196 A Mesoscale Convective Complex Type Storm over the Desert Southwest. Darryl Randerson, April 1986. (PB86 190998/AS)
- 197 The Effects of Eastern North Pacific Tropical Cyclones on the Southwestern United States. Walter Smith, August 1986. (PB87 106258/AS)
- 198 Preliminary Lightning Climatology Studies for Idaho. Christopher D. Hill, Carl J. Gorski, and Michael C. Conger, April 1987. (PB87 180196/AS)
- 199 Heavy Rains and Flooding in Montana: A Case for Slantwise Convection. Glenn R. Luskky, April 1987. (PB87 185229/AS)
- 200 Annual Data and Verification Tabulation Eastern North Pacific Tropical Storms and Hurricanes 1986. Roger L. Cross and Kenneth B. Mielke, September 1987. (PB88 110895/AS)
- 201 An Inexpensive Solution for the Mass Distribution of Satellite Images. Glen W. Sampson and George Clark, September 1987. (PB88 114038/AS)
- 202 Annual Data and Verification Tabulation Eastern North Pacific Tropical Storms and Hurricanes 1987. Roger L. Cross and Kenneth B. Mielke, September 1988. (PB88 101935/AS)
- 203 An Investigation of the 24 September 1986 "Cold Sector" Tornado Outbreak in Northern California. John P. Monteverti and Scott A. Braun, October 1988. (PB89 121297/AS)
- 204 Preliminary Analysis of Cloud-To-Ground Lightning in the Vicinity of the Nevada Test Site. Carven Scott, November 1988. (PB89 128649/AS)
- 205 Forecast Guidelines for Fire Weather and Forecasters -- How Nighttime Humidity Affects Wildland Fuels. David W. Goens, February 1989. (PB89 162549/AS)
- 206 A Collection of Papers Related to Heavy Precipitation Forecasting. Western Region Headquarters, Scientific Services Division, August 1989. (PB89 230833/AS)
- 207 The Las Vegas McCarran International Airport Microburst of August 8, 1989. Carven A. Scott, June 1990. (PB90-240268)
- 208 Meteorological Factors Contributing to the Canyon Creek Fire Blowup, September 6 and 7, 1988. David W. Goens, June 1990. (PB90-245085)
- 209 Stratus Surge Prediction Along the Central California Coast. Peter Felsch and Woodrow Whitlatch, December 1990. (PB91-129239)
- 210 Hydrotools. Tom Egger, January 1991. (PB91-151787/AS)
- 211 A Northern Utah Soaker. Mark E. Struthwolf, February 1991. (PB91-168716)
- 212 Preliminary Analysis of the San Francisco Rainfall Record: 1849-1990. Jan Null, May 1991. (PB91-208439)
- 213 Idaho Zone Preformat, Temperature Guidance, and Verification. Mark A. Mollner, July 1991. (PB91-227405/AS)
- 214 Emergency Operational Meteorological Considerations During an Accidental Release of Hazardous Chemicals. Peter Mueller and Jerry Galt, August 1991. (PB91-235424)
- 215 WeatherTools. Tom Egger, October 1991. (PB93-184950)
- 216 Creating MOS Equations for RAWs Stations Using Digital Model Data. Dennis D. Gettman, December 1991. (PB92-131473/AS)
- 217 Forecasting Heavy Snow Events in Missoula, Montana. Mike Richmond, May 1992. (PB92-196104)
- 218 NWS Winter Weather Workshop in Portland, Oregon. Various Authors, December 1992. (PB93-146785)
- 219 A Case Study of the Operational Usefulness of the Sharp Workstation in Forecasting a Mesocyclone-Induced Cold Sector Tornado Event in California. John P. Monteverti, March 1993. (PB93-178697)
- 220 Climate of Pendleton, Oregon. Claudia Bell, August 1993. (PB93-227536)
- 221 Utilization of the Bulk Richardson Number, Helicity and Sounding Modification in the Assessment of the Severe Convective Storms of 3 August 1992. Eric C. Evenson, September 1993. (PB94-131943)
- 222 Convective and Rotational Parameters Associated with Three Tornado Episodes in Northern and Central California. John P. Monteverti and John Quadros, September 1993. (PB94-131943)
- 223 Climate of San Luis Obispo, California. Gary Ryan, February 1994. (PB94-162062)
- 224 Climate of Wenatchee, Washington. Michael W. McFarland, Roger G. Buckman, and Gregory E. Matzen, March 1994. (PB94-164308)
- 225 Climate of Santa Barbara, California. Gary Ryan, December 1994. (PB95-173720)
- 226 Climate of Yakima, Washington. Greg DeVoir, David Hogan, and Jay Neher, December 1994. (PB95-173688)
- 227 Climate of Kalispell, Montana. Chris Maier, December 1994. (PB95-169488)
- 228 Forecasting Minimum Temperatures in the Santa Maria Agricultural District. Wilfred Pi and Peter Felsch, December 1994. (PB95-171088)
- 229 The 10 February 1994 Oroville Tornado--A Case Study. Mike Staudenmaier, Jr., April 1995.
- 230 Santa Ana Winds and the Fire Outbreak of Fall 1993. Ivory Small, June 1995.
- 231 Washington State Tornadoes. Trest Huse, July 1995.
- 232 Fog Climatology at Spokane, Washington. Paul Frisbie, July 1995.

NOAA SCIENTIFIC AND TECHNICAL PUBLICATIONS

The National Oceanic and Atmospheric Administration was established as part of the Department of Commerce on October 3, 1970. The mission responsibilities of NOAA are to assess the socioeconomic impact of natural and technological changes in the environment and to monitor and predict the state of the solid Earth, the oceans and their living resources, the atmosphere, and the space environment of the Earth.

The major components of NOAA regularly produce various types of scientific and technical information in the following kinds of publications.

PROFESSIONAL PAPERS--Important definitive research results, major techniques, and special investigations.

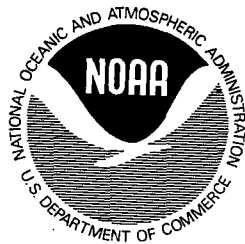
CONTRACT AND GRANT REPORTS--Reports prepared by contractors or grantees under NOAA sponsorship.

ATLAS--Presentation of analyzed data generally in the form of maps showing distribution of rainfall, chemical and physical conditions of oceans and atmosphere, distribution of fishes and marine mammals, ionospheric conditions, etc.

TECHNICAL SERVICE PUBLICATIONS--Reports containing data, observations, instructions, etc. A partial listing includes data serials; prediction and outlook periodicals; technical manuals, training papers, planning reports, and information serials; and miscellaneous technical publications.

TECHNICAL REPORTS--Journal quality with extensive details, mathematical developments, or data listings.

TECHNICAL MEMORANDUMS--Reports of preliminary, partial, or negative research or technology results, interim instructions, and the like.



Information on availability of NOAA publications can be obtained from:

NATIONAL TECHNICAL INFORMATION SERVICE

U. S. DEPARTMENT OF COMMERCE

5285 PORT ROYAL ROAD

SPRINGFIELD, VA 22161