



**NOAA TECHNICAL MEMORANDUM
NWS WR-241**

**OPERATIONAL APPLICATIONS OF THE REAL-TIME
NATIONAL LIGHTNING DETECTION NETWORK DATA AT
THE NWSO TUCSON, AZ**

**Darren McCollum, David Bright, Jim Meyer and John Glueck
National Weather Service Office
Tucson, Arizona**

September 1996

**U.S. DEPARTMENT OF
COMMERCE**

/ National Oceanic and
Atmospheric Administration

/ National Weather
Service



NOAA TECHNICAL MEMORANDA
National Weather Service, Western Region Subseries

The National Weather Service (NWS) Western Region (WR) Subseries provides an informal medium for the documentation and quick dissemination of results not appropriate, or not yet ready, for formal publication. The series is used to report on work in progress, to describe technical procedures and practices, or to relate progress to a limited audience. These Technical Memoranda will report on investigations devoted primarily to regional and local problems of interest mainly to personnel, and hence will not be widely distributed.

Papers 1 to 25 are in the former series, ESSA Technical Memoranda, Western Region Technical Memoranda (WRTM); papers 24 to 59 are in the former series, ESSA Technical Memoranda, Weather Bureau Technical Memoranda (WBTM). Beginning with 60, the papers are part of the series, NOAA Technical Memoranda NWS. Out-of-print memoranda are not listed.

Papers 2 to 22, except for 5 (revised edition), are available from the National Weather Service Western Region, Scientific Services Division, 125 South State Street - Rm 1210, Salt Lake City, Utah 84138-1102. Paper 5 (revised edition), and all others beginning with 25 are available from the National Technical Information Service, U.S. Department of Commerce, Sills Building, 5285 Port Royal Road, Springfield, Virginia 22161. Prices vary for all paper copies; microfiche are \$3.50. Order by accession number shown in parentheses at end of each entry.

ESSA Technical Memoranda (WRTM)

- 2 Climatological Precipitation Probabilities. Compiled by Lucianne Miller, December 1965.
- 3 Western Region Pre- and Post-FP-3 Program, December 1, 1965, to February 20, 1966. Edward D. Diemer, March 1966.
- 5 Station Descriptions of Local Effects on Synoptic Weather Patterns. Philip Williams, Jr., April 1966 (Revised November 1967, October 1969). (PB-17800)
- 8 Interpreting the RAREP. Herbert P. Benner, May 1966 (Revised January 1967).
- 11 Some Electrical Processes in the Atmosphere. J. Latham, June 1966.
- 17 A Digitalized Summary of Radar Echoes within 100 Miles of Sacramento, California. J. A. Youngberg and L. B. Overaas, December 1966.
- 21 An Objective Aid for Forecasting the End of East Winds in the Columbia Gorge, July through October. D. John Coparanis, April 1967.
- 22 Derivation of Radar Horizons in Mountainous Terrain. Roger G. Pappas, April 1967.

ESSA Technical Memoranda, Weather Bureau Technical Memoranda (WBTM)

- 25 Verification of Operation Probability of Precipitation Forecasts, April 1966-March 1967. W. W. Dickey, October 1967. (PB-176240)
- 26 A Study of Winds in the Lake Mead Recreation Area. R. P. Augulis, January 1968. (PB-177830)
- 28 Weather Extremes. R. J. Schmidl, April 1968 (Revised March 1986). (PB86 177672/AS). (Revised October 1991 - PB92-115062/AS)
- 29 Small-Scale Analysis and Prediction. Philip Williams, Jr., May 1968. (PB178425)
- 30 Numerical Weather Prediction and Synoptic Meteorology. CPT Thomas D. Murphy, USAF, May 1968. (AD 673365)
- 31 Precipitation Detection Probabilities by Salt Lake ARTC Radars. Robert K. Belesky, July 1968. (PB 179084)
- 32 Probability Forecasting--A Problem Analysis with Reference to the Portland Fire Weather District. Harold S. Ayer, July 1968. (PB 179289)
- 36 Temperature Trends in Sacramento--Another Heat Island. Anthony D. Lentini, February 1969. (PB 183055)
- 37 Disposal of Logging Residues Without Damage to Air Quality. Owen P. Cramer, March 1969. (PB 183057)
- 39 Upper-Air Lows Over Northwestern United States. A.L. Jacobson, April 1969. PB 184296)
- 40 The Man-Machine Mix in Applied Weather Forecasting in the 1970s. L.W. Snellman, August 1969. (PB 185068)
- 43 Forecasting Maximum Temperatures at Helena, Montana. David E. Olsen, October 1969. (PB 185762)
- 44 Estimated Return Periods for Short-Duration Precipitation in Arizona. Paul C. Kangieser, October 1969. (PB 187763)
- 46 Applications of the Net Radiometer to Short-Range Fog and Stratus Forecasting at Eugene, Oregon. L. Yee and E. Bates, December 1969. (PB 190476)
- 47 Statistical Analysis as a Flood Routing Tool. Robert J.C. Burnash, December 1969. (PB 188744)
- 48 Tsunami. Richard P. Augulis, February 1970. (PB 190157)
- 49 Predicting Precipitation Type. Robert J.C. Burnash and Floyd E. Hug, March 1970. (PB 190962)
- 50 Statistical Report on Aeroallergens (Pollens and Molds) Fort Huachuca, Arizona, 1969. Wayne S. Johnson, April 1970. (PB 191743)
- 51 Western Region Sea State and Surf Forecaster's Manual. Gordon C. Shields and Gerald B. Burdwell, July 1970. (PB 193102)
- 52 Sacramento Weather Radar Climatology. R.G. Pappas and C. M. Veliquette, July 1970. (PB 193347)
- 54 A Refinement of the Vorticity Field to Delineate Areas of Significant Precipitation. Barry B. Aronovitch, August 1970.
- 55 Application of the SSARR Model to a Basin without Discharge Record. Vail Schermerhorn and Donal W. Kuehl, August 1970. (PB 194394)
- 56 Areal Coverage of Precipitation in Northwestern Utah. Philip Williams, Jr., and Werner J. Heck, September 1970. (PB 194389)
- 57 Preliminary Report on Agricultural Field Burning vs. Atmospheric Visibility in the Willamette Valley of Oregon. Earl M. Bates and David O. Chicote, September 1970. (PB 194710)
- 58 Air Pollution by Jet Aircraft at Seattle-Tacoma Airport. Wallace R. Donaldson, October 1970. (COM 71 00017)
- 59 Application of PE Model Forecast Parameters to Local-Area Forecasting. Leonard W. Snellman, October 1970. (COM 71 00016)
- 60 An Aid for Forecasting the Minimum Temperature at Medford, Oregon, Arthur W. Fritz, October 1970. (COM 71 00120)
- 63 700-mb Warm Air Advection as a Forecasting Tool for Montana and Northern Idaho. Norris E. Woerner, February 1971. (COM 71 00349)
- 64 Wind and Weather Regimes at Great Falls, Montana. Warren B. Price, March 1971.
- 65 Climate of Sacramento, California. Richard Honton and Tony Martini (Retired), August 1996. (Fifth Revision) (PB89 207761/AS)
- 66 A Preliminary Report on Correlation of ARTCC Radar Echoes and Precipitation. Wilbur K. Hall, June 1971. (COM 71 00829)
- 69 National Weather Service Support to Soaring Activities. Ellis Burton, August 1971. (COM 71 00956)
- 71 Western Region Synoptic Analysis-Problems and Methods. Philip Williams, Jr., February 1972. (COM 72 10433)
- 74 Thunderstorms and Hail Days Probabilities in Nevada. Clarence M. Sakamoto, April 1972. (COM 72 10554)

- 75 A Study of a Low Level Jet Stream of the San Joaquin Valley. Ronald A. Willis and Philip Williams, Jr., May 1972. (COM 72 10707)
- 76 Monthly Climatological Charts of the Behavior of Fog and Low Stratus at Los Angeles International Airport. Donald M. Gales, July 1972. (COM 72 11140)
- 77 A Study of Radar Echo Distribution in Arizona During July and August. John E. Hales, Jr., July 1972. (COM 72 11136)
- 78 Forecasting Precipitation at Bakersfield, California, Using Pressure Gradient Vectors. Earl T. Riddiough, July 1972. (COM 72 11146)
- 79 Climate of Stockton, California. Robert C. Nelson, July 1972. (COM 72 10920)
- 80 Estimation of Number of Days Above or Below Selected Temperatures. Clarence M. Sakamoto, October 1972. (COM 72 10021)
- 81 An Aid for Forecasting Summer Maximum Temperatures at Seattle, Washington. Earl M. Johnson, November 1972. (COM 73 10150)
- 82 Flash Flood Forecasting and Warning Program in the Western Region. Philip Williams, Jr., Chester L. Glenn, and Roland L. Raetz, December 1972, (Revised March 1978). (COM 73 10251)
- 83 A Comparison of Manual and Semiautomatic Methods of Digitizing Analog Wind Records. Glenn E. Rasch, March 1973. (COM 73 10689)
- 86 Conditional Probabilities for Sequences of Wet Days at Phoenix, Arizona. Paul C. Kangieser, June 1973. (COM 73 11264)
- 87 A Refinement of the Use of K-Values in Forecasting Thunderstorms in Washington and Oregon. Robert Y.G. Lee, June 1973. (COM 73 11276)
- 89 Objective Forecast Precipitation Over the Western Region of the United States. Julia N. Paegle and Larry P. Kierulff, September 1973. (COM 73 11946/AS)
- 91 Arizona "Eddy" Tornadoes. Robert S. Ingram, October 1973. (COM 73 10465)
- 92 Smoke Management in the Willamette Valley. Earl M. Bates, May 1974. (COM 74 11277/AS)
- 93 An Operational Evaluation of 500-mb Type Regression Equations. Alexander E. MacDonald, June 1974. (COM 74 11407/AS)
- 94 Conditional Probability of Visibility Less than One-Half Mile in Radiation Fog at Fresno, California. John D. Thomas, August 1974. (COM 74 11555/AS)
- 95 Climate of Flagstaff, Arizona. Paul W. Sorenson, and updated by Reginald W. Preston, January 1987. (PB87 143160/AS)
- 96 Map type Precipitation Probabilities for the Western Region. Glenn E. Rasch and Alexander E. MacDonald, February 1975. (COM 75 10428/AS)
- 97 Eastern Pacific Cut-Off Low of April 21-28, 1974. William J. Alder and George R. Miller, January 1976. (PB 250 711/AS)
- 98 Study on a Significant Precipitation Episode in Western United States. Ira S. Brenner, April 1976. (COM 75 10719/AS)
- 99 A Study of Flash Flood Susceptibility-A Basin in Southern Arizona. Gerald Williams, August 1975. (COM 75 11360/AS)
- 102 A Set of Rules for Forecasting Temperatures in Napa and Sonoma Counties. Wesley L. Tuft, October 1975. (PB 248 902/AS)
- 103 Application of the National Weather Service Flash-Flood Program in the Western Region. Gerald Williams, January 1976. (PB 253 053/AS)
- 104 Objective Aids for Forecasting Minimum Temperatures at Reno, Nevada, During the Summer Months. Christopher D. Hill, January 1976. (PB 252 866/AS)
- 105 Forecasting the Mono Wind. Charles P. Ruscha, Jr., February 1976. (PB 254 650)
- 106 Use of MOS Forecast Parameters in Temperature Forecasting. John C. Plankinton, Jr., March 1976. (PB 254 649)
- 107 Map Types as Aids in Using MOS PoPs in Western United States. Ira S. Brenner, August 1976. (PB 259 594)
- 108 Other Kinds of Wind Shear. Christopher D. Hill, August 1976. (PB 260 437/AS)
- 109 Forecasting North Winds in the Upper Sacramento Valley and Adjoining Forests. Christopher E. Fontana, September 1976. (PB 273 677/AS)
- 110 Cool Inflow as a Weakening Influence on Eastern Pacific Tropical Cyclones. William J. November 1976. (PB 264 655/AS)
- 112 The MAN/MOS Program. Alexander E. MacDonald, February 1977. (PB 265 941/AS)
- 113 Winter Season Minimum Temperature Formula for Bakersfield, California, Using Multiple Regression. Michael J. Card, February 1977. (PB 273 694/AS)
- 114 Tropical Cyclone Kathleen. James R. Fors, February 1977. (PB 273 676/AS)
- 116 A Study of Wind Gusts on Lake Mead. Bradley Colman, April 1977. (PB 268 847)
- 117 The Relative Frequency of Cumulonimbus Clouds at the Nevada Test Site as a Function of K-Value. R.F. Quiring, April 1977. (PB 272 831)
- 118 Moisture Distribution Modification by Upward Vertical Motion. Ira S. Brenner, April 1977. (PB 268 740)
- 119 Relative Frequency of Occurrence of Warm Season Echo Activity as a Function of Stability Indices Computed from the Yucca Flat, Nevada, Rawinsonde. Darryl Randerson, June 1977. (PB 271 290/AS)
- 121 Climatological Prediction of Cumulonimbus Clouds in the Vicinity of the Yucca Flat Weather Station. R.F. Quiring, June 1977. (PB 271 704/AS)
- 122 A Method for Transforming Temperature Distribution to Normality. Morris S. Webb, Jr., June 1977. (PB 271 742/AS)
- 124 Statistical Guidance for Prediction of Eastern North Pacific Tropical Cyclone Motion - Part I. Charles J. Neumann and Preston W. Leftwich, August 1977. (PB 272 661)
- 125 Statistical Guidance on the Prediction of Eastern North Pacific Tropical Cyclone Motion - Part II. Preston W. Leftwich and Charles J. Neumann, August 1977. (PB 273 155/AS)
- 126 Climate of San Francisco. E. Jan Null, February 1978. (Revised by George T. Pericht, April 1988 and January 1995). (PB88 208624/AS)
- 127 Development of a Probability Equation for Winter-Type Precipitation Patterns in Great Falls, Montana. Kenneth B. Mielke, February 1978. (PB 281 387/AS)
- 128 Hand Calculator Program to Compute Parcel Thermal Dynamics. Dan Gudgei, April 1978. (PB 283 080/AS)
- 129 Fire whirls. David W. Goens, May 1978. (PB 283 866/AS)
- 130 Flash-Flood Procedure. Ralph C. Hatch and Gerald Williams, May 1978. (PB 286 014/AS)
- 131 Automated Fire-Weather Forecasts. Mark A. Molner and David E. Olsen, September 1978. (PB 289 916/AS)
- 132 Estimates of the Effects of Terrain Blocking on the Los Angeles WSR-74C Weather Radar. R.G. Pappas, R.Y. Lee, B.W. Finke, October 1978. (PB 289767/AS)
- 133 Spectral Techniques in Ocean Wave Forecasting. John A. Jannuzzi, October 1978. (PB291317/AS)
- 134 Solar Radiation. John A. Jannuzzi, November 1978. (PB291195/AS)
- 135 Application of a Spectrum Analyzer in Forecasting Ocean Swell in Southern California Coastal Waters. Lawrence P. Kierulff, January 1979. (PB292716/AS)
- 136 Basic Hydrologic Principles. Thomas L. Dietrich, January 1979. (PB292247/AS)
- 137 LFM 24-Hour Prediction of Eastern Pacific Cyclones Refined by Satellite Images. John R. Zimmerman and Charles P. Ruscha, Jr., January 1979. (PB294324/AS)
- 138 A Simple Analysis/Diagnosis System for Real Time Evaluation of Vertical Motion. Scott Helfrich and James R. Fors, February 1979. (PB294216/AS)
- 139 Aids for Forecasting Minimum Temperature in the Wenatchee Frost District. Robert S. April 1979. (PB298339/AS)
- 140 Influence of Cloudiness on Summertime Temperatures in the Eastern Washington Fire Weather district. James Holcomb, April 1979. (PB298674/AS)
- 141 Comparison of LFM and MFM Precipitation Guidance for Nevada During Doreen. Christopher Hill, April 1979. (PB298613/AS)
- 142 The Usefulness of Data from Mountaintop Fire Lookout Stations in Determining Atmospheric Stability. Jonathan W. Corey, April 1979. (PB298899/AS)
- 143 The Depth of the Marine Layer at San Diego as Related to Subsequent Cool Season Precipitation Episodes in Arizona. Ira S. Brenner, May 1979. (PB298817/AS)

**NOAA TECHNICAL MEMORANDUM
NWS WR-241**

**OPERATIONAL APPLICATIONS OF THE REAL-TIME
NATIONAL LIGHTNING DETECTION NETWORK DATA AT
THE NWSO TUCSON, AZ**

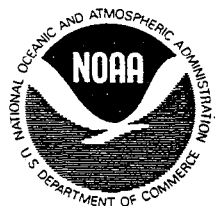
**Darren McCollum, David Bright, Jim Meyer, and John Glueck
National Weather Service Office
Tucson, Arizona**

September 1996

UNITED STATES
DEPARTMENT OF COMMERCE
Mickey Kantor, Secretary

National Oceanic and
Atmospheric Administration
D. James Baker, Under Secretary
and Administrator

National Weather Service
Elbert W. Friday, Jr., Assistant
Administrator for Weather Services



**This publication has been reviewed
and is approved for publication by
Scientific Services Division,
Western Region**



**Delain A. Edman, Chief
Scientific Services Division
Salt Lake City, Utah**

TABLE OF CONTENTS

LIST OF FIGURES	v
ABSTRACT	1
1. INTRODUCTION	1
2. LIGHTNING DETECTION	2
3. HISTORY	3
4. NLDN LIGHTNING DETECTION EFFICIENCY AND ACCURACY	4
5. GENERAL USAGE OF NLDN REAL-TIME LIGHTNING DATA AT TUCSON ..	4
A. SURVEILLANCE	4
i. Rapid Assessment of Thunderstorm Events	4
ii. Supplement to Areal Coverage of KEMX	5
iii. Superior Time Resolution	5
B. DETAILED COVERAGE WHEN KEMX IS OUT OF SERVICE	5
6. SPECIFIC APPLICATIONS	6
A. BACKUP POWER DECISION FOR KEMX	6
B. PUBLIC SAFETY	6
C. BEAM BLOCKAGE	7
D. STORM TENDENCIES AND STRUCTURE	7
i. August 19, 1995: Organization and dissipation of a tropical squall line	8
ii. September 27-28, 1995: Nocturnal Thunderstorm Development over Northern Mexico	8
E. LOW TOP CONVECTION	9
F. MEXICAN DATA COVERAGE	10
G. NATIONAL COVERAGE	10
7. RESEARCH APPLICATIONS AND CLIMATOLOGY	10
A. CLIMATOLOGY	11
B. CONVECTIVE RAINFALL INDICATOR	11
8. ACKNOWLEDGMENTS	12
9. REFERENCES	12

LIST OF FIGURES

- Figure 1: The system configuration for the NLDN from data collection to distribution of real-time data to users. Ground-based sensors detect the electromagnetic signal produced by a lightning discharge (1) and transmit salient information to the Network Control Center (NCC) in Tucson, Arizona via a two-way satellite system (2-3). This "raw" data from the remote sensors is processed at the NCC (4) to provide the time, location and peak current of each detected discharge. This processed information is sent back to the communications network for satellite broadcast dissemination (5) to real-time users (6). All this takes place within 30-40 seconds of a lightning flash (from Cummins 1995).
- Figure 2a: Determination of cloud-to-ground flash location when two DFs detect it. Solid lines represent measured azimuth of the flash; dashed lines outline the angular random error in azimuth measurements. Dot indicates computed flash location; shaded indicates area where flash probably occurred (from Holle and Lopez 1993).
- Figure 2b: Determination of cloud-to-ground flash location when three DFs detect it. Solid lines represent measured azimuth of the flash. Open circles indicate the three possible locations defined by three different intersections of azimuth vectors. The position (solid dot) that would minimize the square differences between measured azimuths (solid lines) and computed azimuths (dashed lines). Figure from Holle and Lopez 1993.
- Figure 3a: Detection of a cloud-to-ground lightning stroke by two TOA receivers. For a given time-of-arrival difference, the stroke that emitted the signal could be located anywhere along one of the branches of a hyperbola that passes between the two receivers and has as foci the two receiver locations (from Holle and Lopez 1993).
- Figure 3b: Detection of a cloud-to-ground lightning strike by three TOA receivers. Two non-redundant hyperbola branches are defined whose intersection can define the location of the strike (open circle). Figure from Holle and Lopez 1993.
- Figure 4: Example of a cloud-to-ground lightning strike located by two LPATS sensors and three IMPACT sensors. Straight lines are azimuth vectors (i.e., DF) and circles are the solution radii (i.e., TOA). Figure from Cummins 1995.
- Figure 5: The NLDN sensor locations within the contiguous United States. Triangles represent IMPACT sensors; circles represent LPATS sensors.

- Figure 6a: The NLDN cloud-to-ground lightning detection efficiency for the contiguous United States. Contours indicate detection efficiency in percentage (from Cummins 1995).
- Figure 6b: The approximate cloud-to-ground lightning location accuracy of the NLDN for the contiguous United States and surrounding area. Contours indicate the uncertainty radius (in km) of a plotted lightning strike (from Cummins 1995).
- Figure 7a: a) NLDN data for July 15, 1995 between 0500 and 0600 UTC. Positive strikes are indicated by plus signs, negative strikes are indicated by diamonds. Large circle indicates 25 mile radius surrounding KEMX.
- Figure 7b: Same as Fig. 7a except between 0500 and 0700 UTC.
- Figure 8: Special weather statement for southeast Arizona from August 13, 1995.
- Figure 9: Occultation data for KEMX at Tucson. The lighter shades of gray indicate regions where the 0.5 degree elevation scan of KEMX is blocked by local topography.
- Figure 10a: Initial cloud-to-ground lightning strikes detected by the NLDN from the September 27-28, 1995 storm at 0515 UTC storm.
- Figure 10b: Cloud-to-ground lightning strikes between 0515 and 0700 UTC as the storm of September 27-28 developed and strengthened.
- Figure 10c: Cloud-to-ground lightning history between 0800 and 0830 UTC during the time of the heaviest rainfall in Tucson.
- Figure 11: Composite reflectivity product from KEMX for September 27-28, 1995 at 0530 UTC.
- Figure 12a: The 0.5 degree base reflectivity for KEMX. Depicted is the initiation phase of the tropical squall line at 2128 UTC August 19, 1995
- Figure 12b: Same as in (a) except for 0036 UTC. Mature phase of the tropical squall line.
- Figure 13a: (a) Negative flashes for the two hour period ending at 0000 UTC August 20, 1995 with contoured flash density ($\text{km}^2\text{hr}^{-1}$). Figure (a) through (f) shows the history of cloud-to-ground flashes for the August 19, 1995 storm.
- Figure 13b: Same as in (a) except ending at 0200 UTC.

- Figure 13c: Same as in (a) except ending at 0400 UTC.
- Figure 13d: Positive flashes for the two hour period ending at 0000 UTC August 20, 1995 with contoured flash density ($\text{km}^2\text{hour}^{-1}$).
- Figure 13e: Same as in (d) except ending at 0200 UTC.
- Figure 13f: Same as in (d) except ending at 0400 UTC.
- Figure 14a: Composite reflectivity from KEMX on September 27-28, 1995 at 0530 UTC showing the poor coverage of storms developing to the southwest in Mexico.
- Figure 14b: Cloud-to-ground lightning data from the September 27-28, 1995 splitting supercell thunderstorms between 0515 and 0615 UTC.
- Figure 15a: Composite reflectivity from KEMX on September 27-28, 1995 at 0630 UTC showing improved coverage of storms as they moved closer to the radar.
- Figure 15b: Cloud-to-ground lightning data from the September 27-28, 1995 splitting supercell thunderstorms between 0515 and 0700 UTC.
- Figure 16: The 500 mb chart for 1200 UTC November 15, 1995 from Daily Weather Summary.
- Figure 17: Lightning History for the low topped thunderstorms that occurred on November 15, 1995.
- Figure 18: Depiction of NLDN cloud-to-ground lightning data coverage into Mexico.
- Figure 19a: Depiction of NLDN cloud-to-ground lightning data coverage on the national scale. Data depicted is from August 2, 1995.
- Figure 19b: The surface analysis from Daily Weather Summary for August 2, 1995 at 1200 UTC.
- Figure 20a: Composite of cloud-to-ground lightning strikes across southeast Arizona for the period August 1 to August 11, 1995.
- Figure 20b: Same as in (a) except August 11 through August 21, 1995.
- Figure 20c: Same as in (a) except August 21 through September 1, 1995.

Figure 21: Average number of cloud-to-ground lightning strikes per square kilometer per year for an eight year period (1987-94) for the months of June through September for Arizona (Lopez et al. 1996).

Figure 22a: Monthly precipitation contours for July 1995 (preliminary analysis produced by the Office of the State Climatologist).

Figure 22b: Number of cloud-to-ground lightning strikes and lightning strike density contours in flashes per square kilometers for July 1995 across southeast Arizona.

Operational Applications of the Real-Time National Lightning Detection Network Data at the NWSO Tucson

Darren McCollum, David Bright, Jim Meyer and John Glueck
NWSO Tucson, AZ

ABSTRACT

Real-time data from the National Lightning Detection Network (NLDN) were used in the operational setting at the NWSO at Tucson, Arizona since February of 1995. A summary of the utility of real-time lightning data at Tucson is presented. The operational staff found lightning data to be useful for concise briefings of convective events already occurring. Consensus was that lightning data filled in the gaps that are inherent in the time and space resolutions of the WSR-88D at Tucson and GOES satellite imagery. Lightning data were used for backup power decisions, improved public safety information, to mitigate the effects of radar beam blockage, analyze storm structure, monitor low topped convection, observe thunderstorms in Mexico and summarize national lightning activity. Analysis of lightning data from the monsoon season in 1995 clearly showed the monsoon season progression of convective systems across southeast Arizona as well as the cloud-to-ground lightning hot spots for the season. Lightning data are compactly stored and allow a quick assessment of the overall convective season, convective outbreaks and the ability to identify individual storm systems of interest for study. Also, it is proposed that seasonal averages of lightning data can be used in conjunction with sparse rainfall data across southeast Arizona to improve rainfall estimates.

1. INTRODUCTION

Since February of 1995, real-time National Lightning Detection Network (NLDN) data have been used in the operational setting at the NEXRAD Weather Service Office (NWSO) in Tucson, Arizona. Access to real-time cloud-to-ground (CG) lightning data was made through a special arrangement with Global Atmospheric Inc. (GAI) of Tucson, Arizona which is responsible for managing the NLDN.

The NLDN has provided lightning data covering the continental United States

since 1989. Using observations gathered from 105 sensors distributed throughout the continental United States, the NLDN provides both real-time and archived lightning data to commercial and government users. The basic system configuration of the NLDN is shown in Fig. 1. Ground-based sensors detect the electromagnetic signal produced by a lightning discharge (1) and transmit salient information to the Network Control Center (NCC) in Tucson, Arizona via a two-way satellite system (2-3). This "raw" data from the remote sensors is processed at the NCC (4) to provide the time, location and peak current of each

detected discharge. This processed information is sent back to the communications network for satellite broadcast dissemination (5) to real-time users (6). All this takes place within 30-40 seconds of a lightning flash (Cummins et al. 1995). The NLDN provides the most reliable and technologically advanced lightning detection data commercially available on a real-time national basis.

In the sections that follow, various aspects of the NLDN real-time lightning data are summarized and discussed. Section 2 presents a brief background of lightning detection systems. The history of the NLDN is summarized in Section 3. In Section 4 the lightning detection efficiency and location accuracy of the NLDN are presented. The remaining sections describe how real-time CG lightning data have been used at the NWSO at Tucson to supplement WSR-88D observations/operations, improve mesoscale forecasting and enhance public safety. The general uses of NLDN data as expressed by forecasters at the NWSO Tucson are summarized in Section 5. Section 6 discusses the specific ways in which NLDN data have been applied in the operational setting. In Section 7, the potential uses of lightning data on station for local climatological studies and research are presented.

2. LIGHTNING DETECTION

Lightning detection systems are designed to detect the electromagnetic signal that is produced when a lightning flash occurs. Incoming electromagnetic signals are continuously analyzed by receivers to

determine if a CG lightning flash has occurred (Cummins et al. 1995; Holle and Lopez 1993). Computer algorithms are used to discriminate between CG and non-CG lightning flashes. The NLDN is designed to retain CG flashes only (Cummins et al. 1992; Maier 1991).

When a CG lightning flash is identified, its location must be determined. The NLDN has used Direction-Finding (DF), Time-Of-Arrival (TOA) and a combination of DF/TOA technologies at various times in its history.

Direction-Finding (DF) methods incorporate cross-loop antennas to detect the electromagnetic signal emitted by a lightning flash. Each antenna consists of two vertical loops perpendicular to each other oriented north-south and east-west. The horizontal azimuth vector of a lightning flash relative to an individual antenna can be computed from the current induced in the cross-loop antenna. The location of a CG lightning flash is then approximated by triangulating the computed azimuth between two or more DF antennas (Fig. 2a and b). The company Lightning Location and Protection, Inc. (LLP), now part of GAI of Tucson, Arizona, is the primary producer of DF systems. Before 1994, the NLDN used DF systems only. For a more in-depth discussion of DF systems refer to Holle and Lopez (1993).

Time-of-arrival (TOA) methods detect differences in the arrival time of the electromagnetic signal produced by a lightning flash. Each antenna detects the signal produced by a lightning flash and assigns a time-of-arrival to the peak amplitude of that signal. The antenna

receiver must be synchronized to a dependable time standard such as the Global Positioning System (GPS). The difference in time-of-arrival between each antenna pair is computed and defines a branch of a hyperbola anywhere along which a CG flash could be located (Fig. 3a). A minimum of three antennas, placed within 200-400 km of one another, are required to determine the location of a lightning flash. For two pairs of antenna the point at which hyperbola branches intersect (i.e., the solution for both hyperbolas) is the location at which the CG flash occurred (Fig. 3b). The company Atmospheric Research Systems, Inc. (ARSI) now also of GAI, is the primary manufacturer of TOA systems. The lightning detection network called Lightning Position and Tracking System (LPATS) uses TOA technology. For further reading on TOA systems, refer to Holle and Lopez (1993).

More recently, GAI engineered a "hybrid" lightning detection system called Improved Performance from Combined Technology (IMPACT) which uses a combination of both DF and TOA methods. For a given CG lightning flash, each IMPACT sensor provides a horizontal azimuth vector pointing toward the CG flash (DF) and the time it took a signal to propagate from its origin to the sensor which is used to define a range circle (TOA). For a group of sensors, the solution that causes all horizontal azimuth vectors and range circles to intersect (achieved through iterative computations) is the approximate location of the flash (Fig. 4). The IMPACT system produces redundant lightning location information and allows a more precise determination

of lightning location than DF or TOA systems alone (Cummins et al. 1995).

3. HISTORY

The NLDN began as a research program at the State University of New York at Albany (SUNYA). The initial network was comprised of 10 lightning sensors along the east coast of the United States (Orville et al., 1983). The electric utility industry realized the potential value of CG lightning data and funded an expansion of the "SUNYA Network" through the Electric Power Research Institute (EPRI) of Palo Alto, California. EPRI is a cooperative research branch of the electric utility industry which commissions research projects around the United States to improve the efficiency of electric power companies. By 1990, the "SUNYA Network" was combined with lightning detection networks operated by the Bureau of Land Management (BLM) and the National Severe Storms Laboratory (NSSL) in Norman, Oklahoma (Orville 1990) and encompassed the contiguous United States.

During 1991, due to increasing demand for lightning detection data, LLP, and EPRI formed Geomet Data Services (GDS) which was made responsible for the management, operation and maintenance of the NLDN. GDS oversaw the installation of 34 new DF systems in the western United States during the summer of 1992 which eliminated the reliance on the lightning sensors operated by the BLM.

In 1993, GDS was making plans for further upgrades and experimented with

the IMPACT sensors in parts of the NLDN, demonstrating significant improvement in lightning location accuracies (Cummins et al., 1995). The NLDN was officially upgraded in 1994 by combining the 34 IMPACT sensors and 65 LPATS sensors. Figure 5 shows the outlay of the combined networks. Today GDS, LLP, and ARSI form GAI, owned by the Sankosha Corporation of Japan.

4. NLDN LIGHTNING DETECTION EFFICIENCY AND ACCURACY

Lightning detection efficiency is the percentage of actual CG lightning flashes that are detected. Various experiments have been undertaken using multiple video cameras to estimate the detection efficiency of the NLDN. This research supported a NLDN flash detection efficiency of approximately 70 to 80 percent (Fig. 6a) within the contiguous United States (Cummins et al. 1995). No lightning detection system is capable of detecting 100 percent of lightning flashes and the detection efficiency of the NLDN can vary significantly between storms. This is especially true for flashes that occur at the periphery of detection networks, when a flash is not surrounded by antennas and/or when a portion of the network is not functioning properly. However, the experience at Tucson suggests that, in general, the detection efficiency of the NLDN is more than adequate for meteorological purposes.

The location accuracy of the NLDN is a measure of the confidence that a detected CG lightning flash occurred within a specific distance of the plotted position. The results of rocket triggered

lightning experiments and multi-camera observations of thunderstorms have been used to estimate the location accuracy of the NLDN (Cummins et al., 1995). The results of these experiments suggest that 50 percent of detected lightning flashes are located within 0.5 km of a plotted position (Fig. 6b). Once again network performance and strikes near the edge of networks experience more uncertainty but real-time usage in Tucson suggests that the location accuracies stated by GAI are reliable.

5. GENERAL USAGE OF NLDN REAL-TIME LIGHTNING DATA AT TUCSON

A. SURVEILLANCE

i. Rapid Assessment of Thunderstorm Events

The operational staff at Tucson found the real-time NLDN data to be an indispensable tool for the quick assessment of the thunderstorm environment across southeast Arizona. Several loops of the real-time lightning data allowed a forecaster to identify where thunderstorms were forming, dissipating, moving, the location of updraft/downdraft regions and the probable degree of mesoscale organization (Holle et al. ,1994; Watson et al. ,1991; Lopez et al., 1990; Mosher 1989; Lopez et al., 1989). It provided a separate time and space scale on which to visualize the overall storm evolution. Such a rapid assessment is not possible with the WSR-88D Doppler weather radar at Tucson (KEMX) since the presence of thunderstorms is necessarily inferred and

requires more in-depth analysis of the data. During the 1995 summer monsoon season in Arizona the lightning data facilitated concise briefing of operational staff coming on shift or called in during severe thunderstorm events and was usually the first choice for a quick storm summary in such situations.

ii. Supplement to Areal Coverage of KEMX

The NLDN lightning data were a critical supplement to the areal coverage of KEMX in several ways. Thunderstorms that were located beyond the range limits of KEMX (e.g., thunderstorms located in Mexico) were easily monitored and usually first identified by lightning data. The real-time lightning data allowed forecasters to track thunderstorms as they moved into and out of the range coverage of KEMX. Low topped thunderstorms below the radar beam that occurred during the winter were easily identified. Lightning data allowed continuous surveillance when thunderstorms moved through or developed within the cone of silence (a 20 to 30 km radius surrounding the radar where the beam angle is too low to fully detect storms) of KEMX. Finally, data voids caused by gaps in KEMX coverage due to beam blockage were filled in with lightning data during convective events. The NLDN data provided an extra dimension of observation and provided a means to fill the apparent gaps in KEMX coverage on time and space scales of similar length. Specific instances of these general observations are discussed in Section 6.

iii. Superior Time Resolution

With the pulse and discontinuous nature of thunderstorms during the summer months in southeast Arizona, significant changes between volume scans of KEMX often occurred. GOES-7 imagery provided an important look at these storms but once again the time resolution was less than satisfactory. Real-time lightning data provided the best time continuity and the tracking of storms within the time gaps present in the other sources of storm scale information. In such situations, and in the future National Weather Service where mesoscale forecasting will be the main focus, the NLDN lightning data fills gaps in coverage caused by the poorer time resolution of KEMX and satellite data as well as lightning data products currently available on AFOS.

B. DETAILED COVERAGE WHEN KEMX IS OUT OF SERVICE

When KEMX was turned off for maintenance, transitioning to backup power or an unexpected failure occurred, the Phoenix WSR-88D Doppler radar (KIWA), was the primary backup. In these situations radar coverage in southeast Arizona was far from complete. Real-time lightning data provided a reliable secondary source of storm scale information when KEMX was down. Especially during summer monsoon (Douglas et al., 1993) convective events, when KEMX was out of service, lightning data were used in concert with satellite data as an effective surrogate to radar coverage. Should a major component of KEMX become disabled, it could potentially take days before the radar is

brought back into full service. The satellite and lightning data in combination could prove to be a valuable resource, especially in the western states where poor radar backup coverage prevails.

6. SPECIFIC APPLICATIONS

A. BACKUP POWER DECISION FOR KEMX

Since February 1995 the operational staff at the NWSO Tucson used NLDN real-time lightning data to detect thunderstorms developing near or approaching KEMX at Tucson. A case in point occurred during the 1995 monsoon season on the evening of July 15, 1995 (Figs. 7a and 7b). Thunderstorm activity was rapidly dissipating over extreme southeast Arizona at 0600 UTC (Fig. 7a). However, an outflow boundary generated by this area of storms moved across the RDA site at about 0630 UTC and triggered a few isolated, high based thunderstorms (bases approximately 12,000 feet above ground level) within the cone of silence of KEMX (Fig. 7b). Likewise, during the daytime hours of the monsoon season, thunderstorms often developed within the cone of silence of KEMX with little or no warning.

The WSR-88D is crucial to the warning and forecast process. The WSR-88D is indispensable in analyzing severe and significant weather situations. Weather statements and advisories, aviation forecast products and virtually all short-term forecasts benefit from the analysis of the WSR-88D data. Considering the less than optimal power grid serving the area where the KEMX radar is sited, the Unit Radar Committee (URC) established the

requirement that the Unit Control Position (UCP) operator is to switch from commercial to generator power whenever there is a thunderstorm within 25 miles of KEMX. The NLDN data is the primary tool to determine when this condition has been met.

At the NWSO Tucson, the real-time lightning data display software (called THUNDER) is configured to produce a series of beeps whenever a CG lightning flash is detected within 25 miles of the radar. Real-time lightning data made the backup power decision by the operational staff more timely and less stressful.

B. PUBLIC SAFETY

The NLDN lightning data provide the potential for more lead time in notifying the public of approaching thunderstorms and allow more descriptive enhancements of nowcasts and special weather statements. On several occasions since February 1995, especially during the monsoon, NLDN lightning data provided the first confirmation that a thunderstorm had developed and that CG lightning was occurring. The example from July 15, 1995 (see Figs. 7a and 7b) is a case in point when an area of weak and isolated thunderstorms containing occasional CG lightning eventually moved into the Tucson Metropolitan area.

Innocuous thunderstorms are perhaps the most dangerous in terms of lightning safety (Holle et al., 1993). During these types of storms, lightning is infrequent and can go unobserved over populated areas, especially during daylight hours. The real-time lightning data provided an

extra tool on which to base special weather statements and nowcasts. An example of how lightning data was used to enhance descriptions is shown in a Special Weather Statement issued on August 13, 1995 (Fig. 8). In this case, unexpected thunderstorms developed over a region of deep outflow generated hours earlier.

The real-time lightning data facilitates the writing of proactive and specific statements about the present and near future characteristics of thunderstorms. This facilitates the effective communication of storm related details to the public.

C. BEAM BLOCKAGE

The site location of KEMX was chosen to optimize radar coverage over as much of the County Warning Area (CWA) in southeast Arizona as possible. However, due to mountainous terrain, the coverage of KEMX is inadequate. Figure 9 shows the beam occultation for KEMX due to surrounding mountains and indicates the regions in southeast Arizona that are not well covered at the lowest elevation angles. In the regions of southeast Arizona where terrain blockage knocks out the lowest elevation angles, real-time NLDN data are useful in identifying and roughly tracking the development of storms in these regions. The NWSO in Tucson has assisted the NWSFO in Phoenix using NLDN data in cases involving some of their more remote or high terrain areas.

An example of elevation angle blockage occurred on September 27-28, 1995. Thunderstorms formed in northern Mexico

and moved northward into southern Pima County. Three plots of NLDN lightning data (Figs. 10a, 10b, and 10c) show first the initial CG lightning strikes detected in northern Mexico (Fig. 10a), then extensive lightning activity as the thunderstorms moved into southern portions of the CWA (Fig. 10b). Figure 10c shows the high resolution detail as these storms move through populated areas. The KEMX composite reflectivity graphic (Fig. 11) corresponding with the time that storms were first beginning to form over northern Mexico shows no indication of storms (compare to Fig. 10a). The approaching storms moved along a radial that suffers from beam blockage at the lowest elevation (see Fig. 9). The NLDN loop clearly showed what was happening, confirmed later by the lower time resolution satellite data. The NLDN data allowed the forecaster to have the longest lead time possible and the public was well served.

D. STORM TENDENCIES AND STRUCTURE

Real-time lightning data provides a nearly instantaneous indication of storm tendencies and cycles, including the initiation and dissipation of convection (Holle et al., 1994; Stolzenburg 1994; Watson et al., 1991; Lopez et al., 1990; Mosher 1989; Lopez et al., 1989). The update rate of real-time lightning data supplied by the NLDN surpasses all other meteorological data currently available at NWSO Tucson including satellite, surface observations, Automated Local Evaluation in Real-Time (ALERT) rain-gage data, and even WSR-88D data. The two cases that follow demonstrate the applicability of real-time lightning data

to the short term forecast and warning operations of NWSO Tucson.

i. August 19, 1995: Organization and dissipation of a tropical squall line.

During the period 2000 - 2300 UTC 19 August 1995, thunderstorms primarily rooted over the higher terrain of southeast Arizona, began to organize into a mesoscale convective system (MCS) from central Arizona to northern Sonora, Mexico. These storms developed into what could be considered a tropical squall as described by Smith and Gall (1989). Figures 12a and 12b show the base reflectivity from KEMX at 2128 UTC 19 August 1995 during the development phase, and at 0036 UTC 20 August 1995 during the mature phase of the MCS, respectively.

A closer look at the lightning activity over the NWSO Tucson county warning area is shown in Figs. 13 (a - f). In Figs. 13 (a - c) are the negative flashes ($\text{km}^{-2} \text{hr}^{-1}$) for the 2 hour periods ending at 0000, 0200 and 0400 UTC, respectively. At 0000 UTC, two areas of lightning activity are shown: the first over the southeast corner of Arizona representing redevelopment of convection (mainly over higher terrain) behind the MCS; and the second area associated with the MCS extending from just west of Globe, Arizona (GLB) to just west of Tucson to around Nogales, Arizona (NGL). By 0200 UTC, the 2 hourly lightning rates have increased and become more solid over much of central and eastern Pima County. And by 0400 UTC, the 2 hourly rates decreased rapidly as the MCS dissipated with little new negative CG lightning activity noted. Similarly, shown in Figs. 13 (d - f) are the

positive flash rates ($\text{km}^{-2} \text{hr}^{-1}$) for the same time period. Note the evolution of the positive flashes, developing primarily from north to south during the period. Over the NWSO Tucson CWA, 2 hourly positive flash density rates increase in the 0200 and 0400 UTC time frames as the MCS dissipated (Fig. 13e and f). It appears that the charge of the lightning may aid real-time operational analysis of convective situations by providing information on the maturity of the convective system, specifically as positive flashes occur when precipitation evolves from predominantly convective to predominantly stratiform (Holle et al. 1994; Stolzenburg 1994; Houze 1993; Lopez et al. 1990).

ii. September 27-28, 1995: Nocturnal Thunderstorm Development over Northern Mexico

Supercell thunderstorms are a rare occurrence in Arizona. This can be inferred from the low frequency of very large hail and/or significant tornadoes reported in the climatological records. However, during the late evening hours of September 27, 1995, thunderstorms developed rapidly over northern Mexico in an unstable environment favorable for potential supercell formation. Approximately 50 knots of unidirectional wind shear existed within the lowest 5 km of the atmosphere, a sufficient condition for supercell thunderstorms (Weisman and Klemp 1982). Meanwhile, a weak upper-level trough was forecast to approach southern Arizona during the night. Numerical guidance was generally poor at suggesting to the forecasters that a potential for thunderstorms existed that night. Thus, their development was

generally considered a surprise to the forecasters at the NWSO Tucson.

The NLDN lightning data provided the first indication that storms developed (as discussed in Section 6C) and more importantly that storms had developed over northern Mexico. The KEMX radar was initially deficient in the storm detection due to the distance of the storms from the radar, since the lowest elevation angle critical for distant storm detection are completely blocked by terrain to the southwest. Figure 14a shows the composite reflectivity at 0530 UTC on September 28, while Fig. 14b shows the one hour lightning activity between 0515 and 0615 UTC. The eastern cluster of lightning is disorganized and is clearly associated with the 50 dBz returns south of Nogales, Arizona. However, the western cluster of lightning shows splitting storm cell organization but the maximum reflectivity is only 20 dBz due to the terrain blockage. In Figs. 15a and 15b are the corresponding radar and lightning detection images one hour later as the storms were moving into southern Arizona. Thunderstorms possessing cores with reflectivities greater than 60 dBz were being detected by KEMX at 0629 UTC, but note how nicely the lightning complimented KEMX by showing the tendency for storms to split during this event. However, due to the lowest elevation angle remaining blocked by the terrain, KEMX algorithms were still operating at a degraded level and did not indicate a mesocyclone. Storm 36 soon produced baseball sized hail (spotter report and later verified) as it moved into southern Arizona.

E. LOW-TOP CONVECTION

The real-time NLDN data can be very useful in low-topped convective outbreaks. A specific example occurred on November 15, 1995. At 1200 UTC on November 15, 1995, a cut-off low was located across northern Baja California and the Sonoran district of northwest Mexico (Fig. 16). This cut-off low continued to move slowly east to just south of Nogales, Arizona through 0000 UTC Wednesday afternoon. The cut-off low produced a moderately unstable atmosphere favorable for the development of weak thunderstorms especially south of Douglas, Arizona.

KEMX experiences beam blockage in the lowest elevation angles over southern Cochise County (see Fig. 9). This is most evident with low-topped convection. Tops in this case were lower than 25,000 feet and KEMX was not able to detect them. *No useful information, related to these low top storms, was available via radar!* Infrared satellite imagery showed that clouds were developing over the region but whether those clouds contained thunderstorms was not clear. Any information concerning thunderstorm activity is especially critical to aviation where even weak high based storms can have an extreme impact. With the use of real-time NLDN lightning data (Fig. 17), thunderstorms were quickly and unambiguously identified. This allowed the timely update of the southeast Arizona zone, terminal and flight route forecasts for Douglas. The NLDN data took speculation out of the decision process and improved service to National Weather Service customers.

F. MEXICAN DATA COVERAGE

Presented in Fig. 18 is a regional depiction of the lightning activity associated with the MCS described in Section 6D. The lightning shows convective organization from central Arizona through southern Arizona into Sonora, Mexico. This figure serves to demonstrate two important features associated with operational application of real-time lightning detection. First, real-time lightning data provides another tool for the meteorologist to use in assimilating the synoptic and mesoscale state of the atmosphere. Second, with no radar data available over Mexico (nor the surrounding coastal waters of the United States), real-time lightning data provides information on convection over remote areas. Detection efficiency and location accuracy decrease away from the contiguous United States borders (as discussed in Section 4), but Fig. 18 illustrates that it still provides useful information in regions of decreased detection efficiency. Thus, the only real-time data available from Mexico is satellite imagery, and in convective situations these pictures are often obscured by high cloudiness. Frequently, real-time lightning data are the only data confirming convective development over Mexico. The case of September 27-29, 1995 in Section 6D provides an excellent example of this.

G. NATIONAL COVERAGE

Real-time lightning data provided the staff at NWSO Tucson with convenient and concise national coverage of convection around the United States. These data help simplify the national convective

picture for forecasters and hydrometeorological technicians, despite the availability of other data such as that from KEMX. Rather than using the coarse lightning data product available on AFOS (NMCGPHLDS), one glance at the national NLDN map provides a snap-shot of convective activity around the country. This is demonstrated in Figs. 19a and 19b. In Fig. 19a are lightning strikes for the 6 hour period ending on August 3, 1995 at 0000 UTC while in Fig. 19b is the daily surface weather map from August 2, 1995 at 1200 UTC. Convection along a stationary front through the central part of the United States is clearly defined, as is a band of convection along and ahead of the cold front moving through the Northern Plains, convection associated with a tropical storm over Florida, and widely scattered thunderstorms over the Intermountain region. Note how quickly the NLDN national map provides the forecaster with real-time detail regarding the convective situation around the country, complimenting the surface analysis while simplifying weather briefings to meteorologists and customers.

7. RESEARCH APPLICATIONS AND CLIMATOLOGY

Lightning data has provided the staff at NWSO Tucson with another dataset for the post-analysis of significant weather events. Examples of this application have been demonstrated in Section 6. The following research applications are more general, and illustrate potential long-term applications for lightning data.

A. CLIMATOLOGY

Typically, the monsoon over Arizona begins by the middle of July and lasts into September (See Maddox et al., 1995 Section 2b for a climatological discussion of the monsoon over Arizona). However, the monsoon of 1995 was late with minimal activity over Arizona until August. It wasn't until nearly the middle of August that widespread convective precipitation occurred on a near-daily basis. Figures 20 (a - c) illustrates the point showing 10-day composite lightning strikes (contoured at 0.5 flashes km^{-2}) over most of the NWSO Tucson CWA. In Fig. 20a are lightning strikes for the period 0000 UTC August 1 through 0000 UTC August 11, 1995. Note that flash densities are generally below 0.5 flashes km^{-2} over most of the area, with the exception of three localized maxima over southern Arizona, most notably near Nogales (NGL). But, during the next 10-day period (0000 UTC August 11 - 0000 UTC August 21, 1995) shown in Fig. 20b, flash densities dramatically increased over the entire area with a large region in excess of 0.5 flashes km^{-2} , and a few pockets in excess of 2 flashes km^{-2} . The final 10-day period of August (0000 UTC August 21 - 0000 UTC September 1, 1995) shows less activity (Fig. 20c) than the middle of the month, but considerably more widespread activity than the first 10 days of the month. In this case, compositing the lightning strikes over southern Arizona helps depict the evolution of the monsoon during the month of August.

Compositing can be done seasonally, as discussed above, or annually as shown in Fig. 21 (courtesy of Raul Lopez and Ron

Holle, NSSL). Figure 21 provides a concise indicator of the annual lightning flash density over the state of Arizona for June through September for an 8 year period (1987-94). The flash density is maximized along the Mogollon Rim over east central Arizona, with a secondary maximum over southeast Arizona.

B. CONVECTIVE RAINFALL INDICATOR

Lightning data could be used as another tool to aid in the estimation of rainfall over data sparse locations. During the summer months in Arizona, nearly all rainfall is convective in nature. Watson et al. (1994) showed that in Arizona during the months of June through September there is good correlation between the number of CG strikes observed within a 400 km^2 area surrounding a particular rain gage and the number of days where measurable rain was received at each rain gage. So there probably is at least *some* correlation between lightning flash density and rainfall accumulations; however, the authors are unaware of any documentation which attempts to quantify CG vs. rainfall relationships.

Figure 22a shows the preliminary analysis of July 1995 rainfall over the state of Arizona as provided by the Office of the State Climatologist in their publication *Arizona Climate Summary*. These data are considered preliminary as the purpose of the publication is to provide an early summary of the past month's weather. Since timeliness is critical, frequently only the first order weather observing stations are used in

their analyses. Figure 22a shows that Douglas received 3.22 inches of rain (0.19 inches below normal) while about 75 miles to the west, Nogales only received 0.33 inches for July, 1995 (4.62 inches below normal). The objective analysis routine used to contour the analysis shows a nearly linear change in departure from normal between Nogales and Douglas, with the 2 inch below normal contour approximately between Douglas and Nogales. However, the lightning data composited for the month of July (Fig. 22b) indicates two maxima in the flash density over southern Arizona: one just north of Douglas, and a second of equal magnitude approximately half way between Douglas and Nogales (this second maximum is over the Huachuca mountains). The maximum just north of Douglas correlates well with the precipitation maximum in the region reported from the Douglas observation site. However, it is likely that another precipitation maximum exists between Douglas and Nogales in the vicinity of the Huachuca Mountains, in the area of the equally strong second CG lightning maximum.

The intent here is not to criticize the preliminary analysis, but rather illustrate the potential of lightning data as an aid in timely precipitation estimation over data-void regions.

8. ACKNOWLEDGMENTS

The authors would like to thank Ron Holle, Raul Lopez, Bob Maddox, Bill Geitz and Andy Bryant for their reviews and constructive suggestions concerning this manuscript. We are also thankful to GAI for allowing the NWSO at Tucson to

use NLDN data in the office since February of 1995. Without this data a real-time evaluation would not have been possible. Thanks goes to our Meteorologist In Charge Marv Shogren, Warning Coordination Meteorologist Paul Flatt and Data Acquisition Program Manager Paul Crimmins for their support and the willingness to make time for this project to be completed. Finally, we would like to thank the forecasters at the NWSO Tucson for their input and comments regarding the uses of real-time lightning data.

9. REFERENCES

Cummins, K. L., E. A., Bardo, W. L. Hiscox and A. E. Pifer, 1995: NLDN'95: A combined TOA/MDF technology upgrade of the U.S. National Lightning Detection Network. Proceedings, International Conference on Lightning and Static Electricity, September 26-28, Williamsburg, Virginia, U.S. Navy Report NAWCADPAX-95-306-PRO, 72-1-72-15.

_____, R.O. Bennett, W.L. Hiscox and A.E. Pifer, 1993: Line reliability and fault analysis using the National Lightning Detection Network. Preprints, Precise Measurements in Power Systems Conference, October 27-29, Arlington, Virginia, II-4.1-II-4.15.

_____, W. L. Hiscox, A. E. Pifer, and M. W. Maier, 1992: Performance analysis of the U.S. National Lightning Detection Network. Proceedings, 9th International Conference on Atmospheric Electricity, June 15-19, St. Petersburg, Russia.

Douglas, M.W., R.A. Maddox, K.W. Howard, and S. Reyes, 1993: The Mexican monsoon. *J. Climate*, **6**, 1665-1677.

Holle, R. L., R. E. Lopez: Overview of real-time lightning detection systems and their meteorological uses. NOAA Tech. Memo ERL NSSL-102, 1993.

_____, A. I. Watson, R. E. Lopez, D. R. MacGorman, R. Ortiz, and Otto, W. D., 1994: The life cycle of lightning and severe weather in a 3-4 June 1985 PRE-STORM mesoscale convective systems. *Mon. Wea. Rev.*, **122**, 1798-1808.

_____, R. E. Lopez, R. Ortiz, C.H. Paxton, D. M. Decker, and D. L. Smith, 1993: The local meteorological environment of lightning casualties in central Florida. Preprints, Conference on Atmospheric Electricity, October 4-8, 1993, St. Louis, Missouri, 779-784.

Houze, R. A., Jr., 1993: *Cloud Dynamics*, Academic Press, California, 273-278.

Maddox, R. A., D. M. McCollum, and K. W. Howard, 1995: Large-scale patterns associated with severe summertime thunderstorms over central Arizona. *Wea. Forecasting*, **10**, 763-778.

Maire, M. W., 1991b: Preliminary evaluation of National Lightning Detection Network performance at Cape Canaveral during August 1990. Computer Sciences Raytheon (CSR) Instrumentation Systems Evaluation Test Report CDRL 137A2, 1 October 1991, CSR-322-0007, 24 pp.

Mosher, F. R., 1989: Lightning data evaluation at the NSSFC-1988. Informal report, Techniques Development Unit, National Severe Storms Forecast Center, Kansas City, Missouri, 20 pp.

Lopez, R. E., R. Ortiz, J. A. Augustine, W. D. Otto, and R. L. Holle, 1990: The progressive development of cloud-to-ground lightning in the early formative stages of a mesoscale convective complex. Preprints, 16th Conference on Severe Local Storms and Atmospheric Electricity, October 22-26, 1990, Kananaskis Park, Alta., Canada, 658-662.

_____, W. D. Otto, J. R. Daugherty, and R. L. Holle, 1989: The relationship between radar and lightning characteristics of northeastern Colorado storm systems. Preprints, 24th Conference on Radar Meteorology, March 27-31, 1989, Tallahassee, Florida, 85-88.

Orville, R.E., R.W. Henderson, and L.F. Bosart, 1983a: An East Coast Lightning Detection Network. *Bull. Amer. Meteor. Soc.*, **64**, 1029-1037.

Stolzenburg, M., 1994: Observations of high ground flash densities of positive lightning in summertime thunderstorms. *Mon. Wea. Rev.*, **122**, 1740-1750.

Watson, I. W., R. L. Holle, R. E. Lopez, R. Ortiz, and J. R. Nicholson, 1991: Surface wind convergence as a short-term predictor of cloud-to-ground lightning at Kennedy Space Center. *Mon. Wea. Rev.*, **6**, 50-64.

____, R. E. Lopez, and R. L. Holle, 1994:
Diurnal cloud-to-ground lightning patterns
in Arizona during the southwest
monsoon. *Mon. Wea. Rev.*, **122**, 1716-
1725.

Weisman, M. L., and J. B. Klemp, 1982:
The dependence of numerically simulated
convective storms on vertical wind shear
and buoyancy. *Mon. Wea. Rev.*, **110**,
504-520.

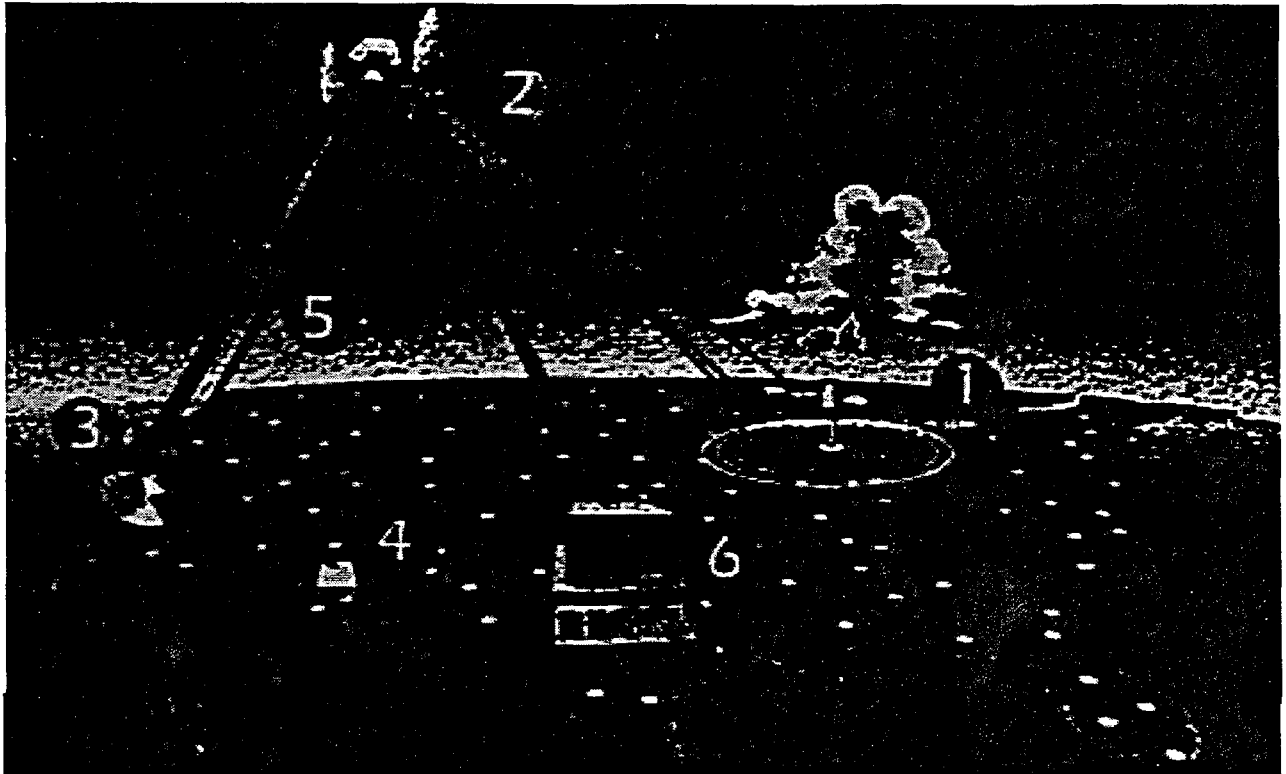


Figure 1: The systems configuration for the NLDN from data collection to distribution of real-time data to users. Ground-based sensors detect the electromagnetic signal produced by a lightning discharge (1) and transmit salient information to the Network Control Center (NCC) in Tucson, Arizona via a two-way satellite system (2-3). This “raw” data from the remote sensors is processed at the NCC (4) to provide the time, location and peak current of each detected discharge. This processed information is sent back to the communications network for satellite broadcast dissemination (5) to real-time users (6). All this takes place within 30-40 seconds of a lightning flash (from Cummins 1995).

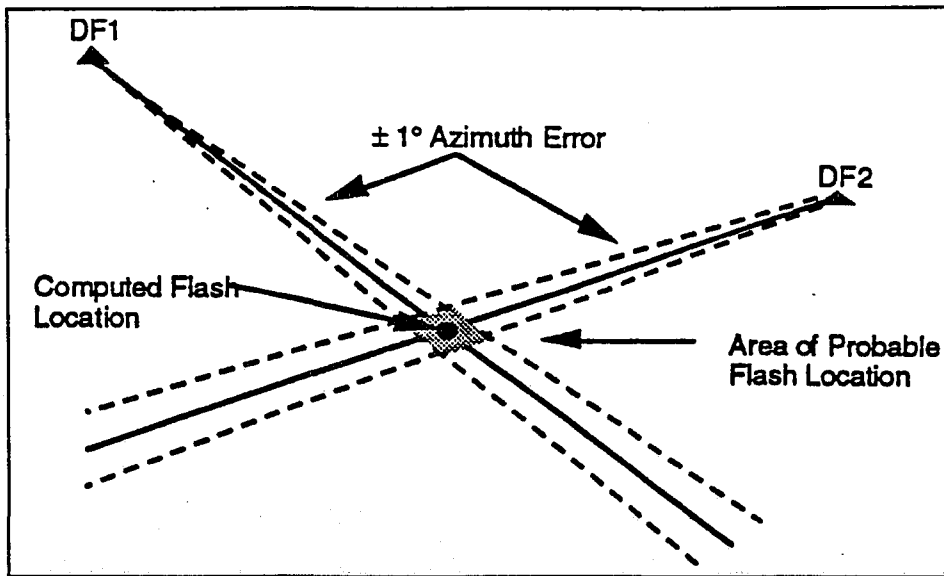


Figure 2a: Determination of cloud-to-ground flash location when two DFs detect it. Solid lines represent measured azimuth of the flash; dashed lines outline the angular random error in azimuth measurements. Dot indicates computed flash location; shaded indicates area where flash probably occurred (from Holle and Lopez 1993).

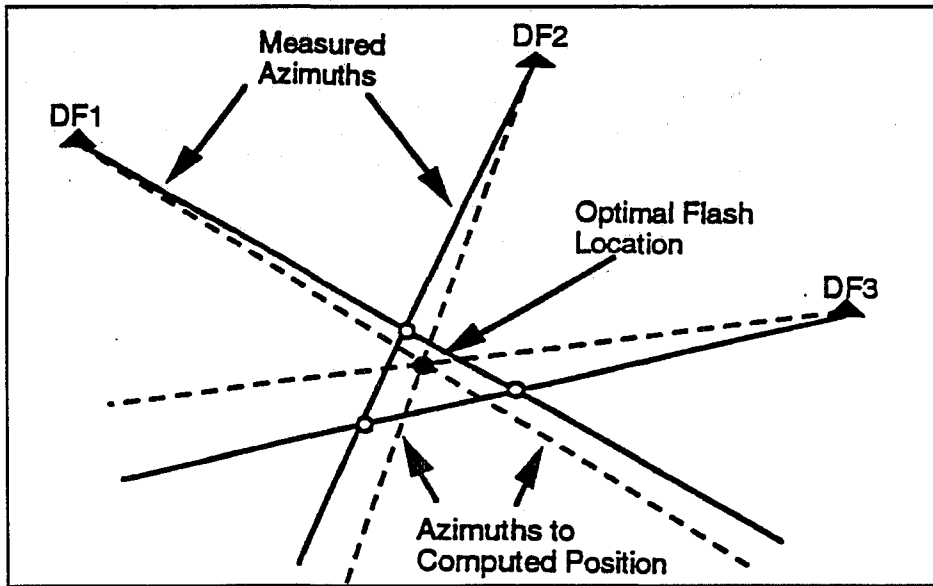


Figure 2b: Determination of flash location when three DFs detect it. Solid lines represent measured azimuths of flash. Open circles indicate the three possible locations defined by three different intersections of azimuth vectors. The position (solid dot) that would minimize the square differences between measured azimuths (solid lines) and computed azimuths (dashed lines). From Holle and Lopez 1993.

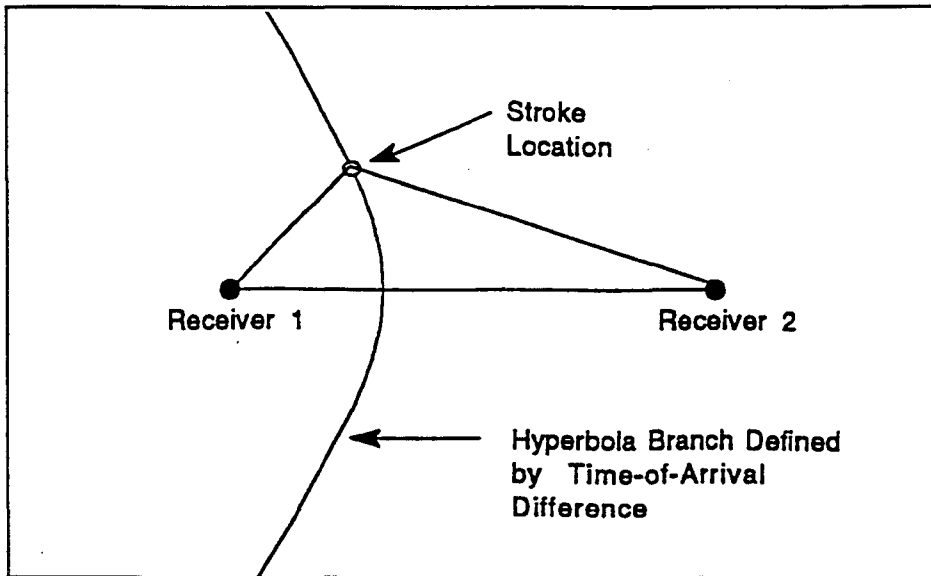


Figure 3a: Detection of a cloud-to-ground lightning stroke by two TOA receivers. For a given time-of-arrival difference, the stroke that emitted the signal could be located anywhere along one of the branches of a hyperbola that passes between the two receivers and has as foci the two receiver locations (from Holle and Lopez 1993).

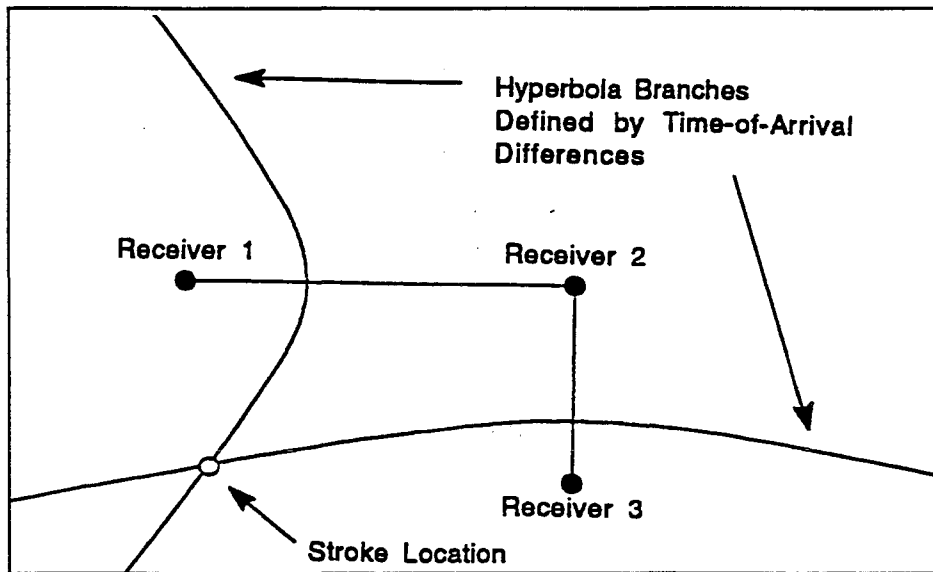


Figure 3b: Detection of a cloud-to-ground lightning stroke by three TOA receivers. Two non-redundant hyperbola branches are defined whose intersection can define the location of the stroke (open circle). From Holle and Lopez 1993.

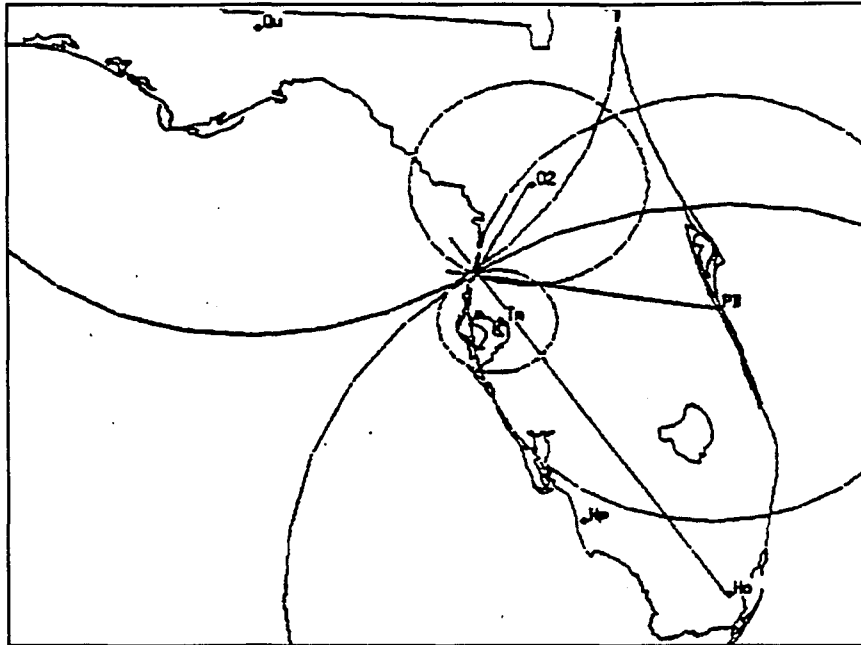


Figure 4: Example of a lightning stroke located by two LPATS sensors and three IMPACT sensors. Straight lines are azimuth vectors (i.e., DF) and circles are the solution radii (i.e., TOA). Figure from Cummins 1995.

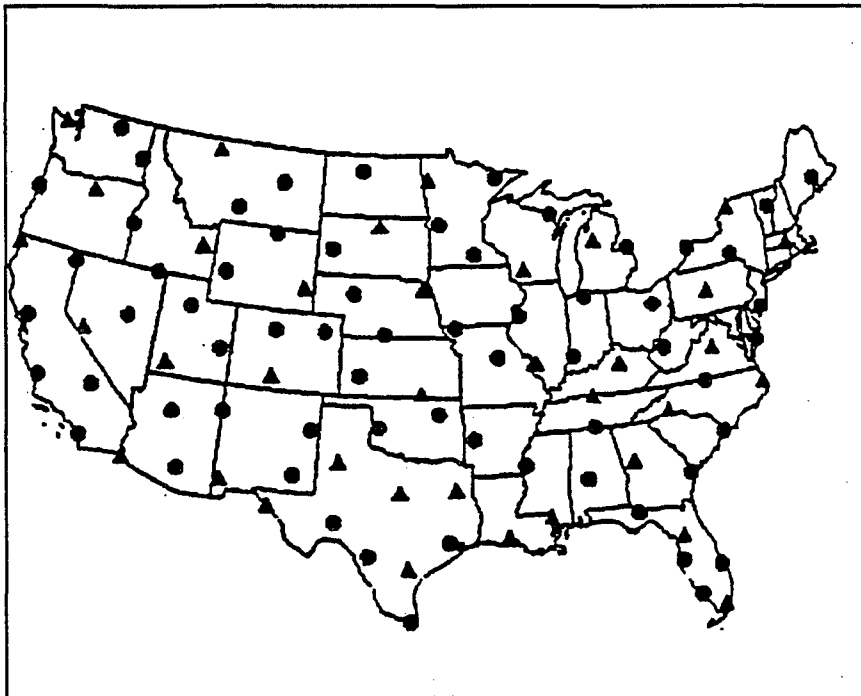


Figure 5: The NLDN sensor locations within the contiguous United States. Triangles represent IMPACT sensors; circles represent LPATS sensors.

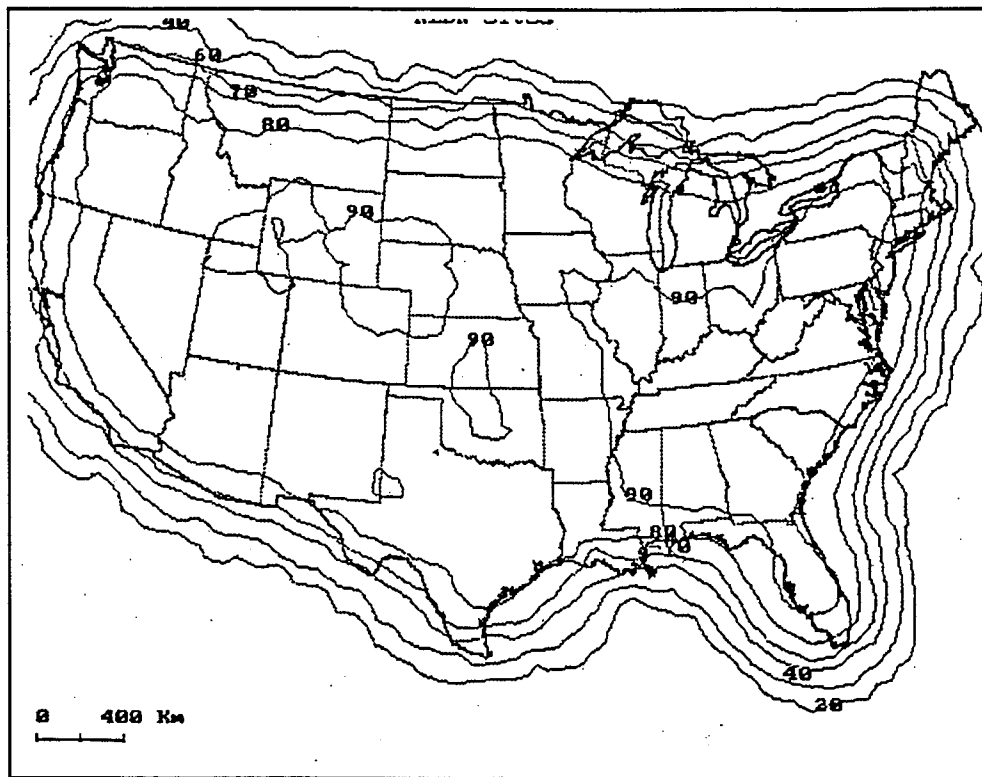


Figure 6a: The NLDN cloud-to-ground lightning detection efficiency for the contiguous United States. Contours indicate detection efficiency in percentage (Cummins 1995).

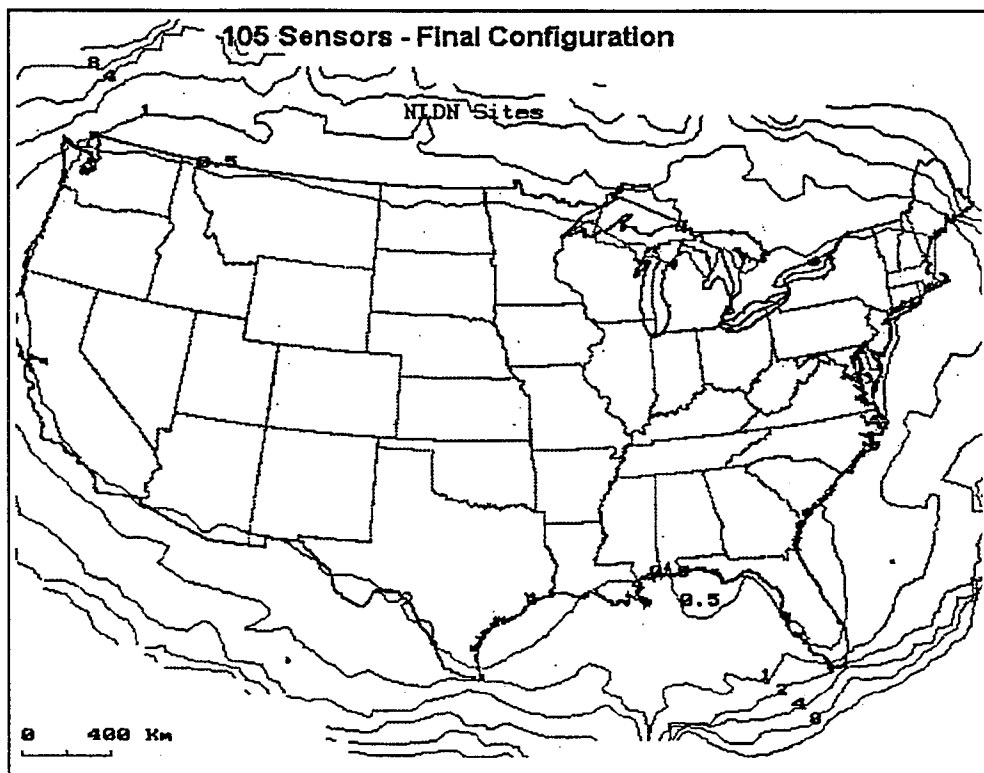


Figure 6b: Approximate cloud-to-ground lightning location accuracy of the NLDN for the contiguous United States and surrounding area. Contours indicate the uncertainty radius (in km) of a plotted lightning strike (Cummins 1995).

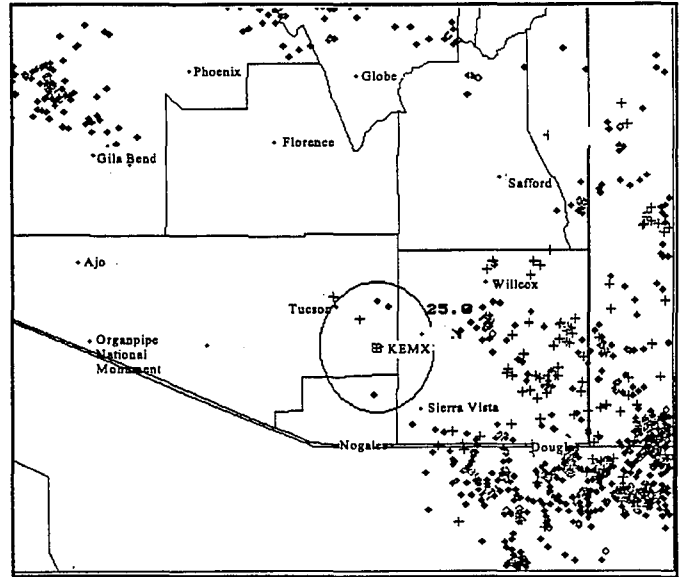
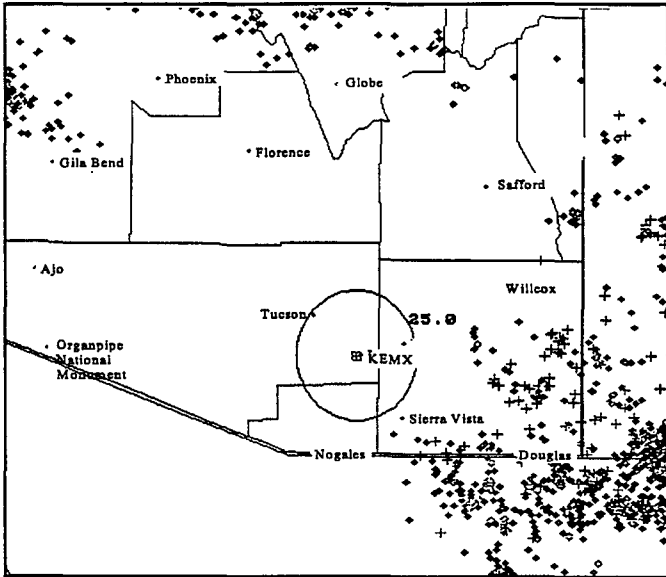


Figure 7a: NLDN data from July 15, 1995 between 0500 and 0600 UTC. Positive strikes are indicated by plus signs, negative strikes are indicated by diamonds. Large circle indicates 25 mile radius surrounding KEMX.

Figure 7b: Same as Fig. 7a except between 0500 and 0700 UTC.

SPECIAL WEATHER STATEMENT
 NATIONAL WEATHER SERVICE TUCSON ARIZONA
 253 PM MST SUN AUG 13 1995

...STRONG THUNDERSTORMS DEVELOPING NEAR I-10 AT THE BORDER OF PIMA AND COCHISE COUNTIES...

AT 248 PM MST TUCSON DOPPLER RADAR AND LIGHTNING DETECTORS INDICATED STRONG THUNDERSTORMS IN FAR EASTERN PIMA...WESTERN COCHISE AND NORTHERN SANTA CRUZ COUNTIES. THE STRONGEST STORM NOTED WAS NEAR HWY 82 IN NORTHEAST SANTA CRUZ COUNTY. ANOTHER STRONG STORM WAS DEVELOPING OVER I-10 AT THE BORDER OF PIMA AND COCHISE COUNTIES...SO DRIVING CONDITIONS MAY DETERIORATE RAPIDLY IN THESE AREAS.

AT THE PRESENT TIME...RADAR INDICATES THE STRONGER OF THESE STORMS ARE CAPABLE OF STRONG GUSTY WINDS NEAR 45 MPH...HEAVY RAIN...AND SMALL HAIL. FREQUENT LIGHTNING HAS ALSO BEEN A CHARACTERISTIC OF THIS AFTERNOONS STORMS. FURTHER DEVELOPMENT AND INTENSIFICATION OF THUNDERSTORMS THIS AFTERNOON AND EVENING IS POSSIBLE...SO STAY AWARE AND ALERT TO WHAT CAN BE A RAPIDLY CHANGING WEATHER SITUATION.

MEYER

Figure 8: Special weather statement for southeast Arizona from August 13, 1995.

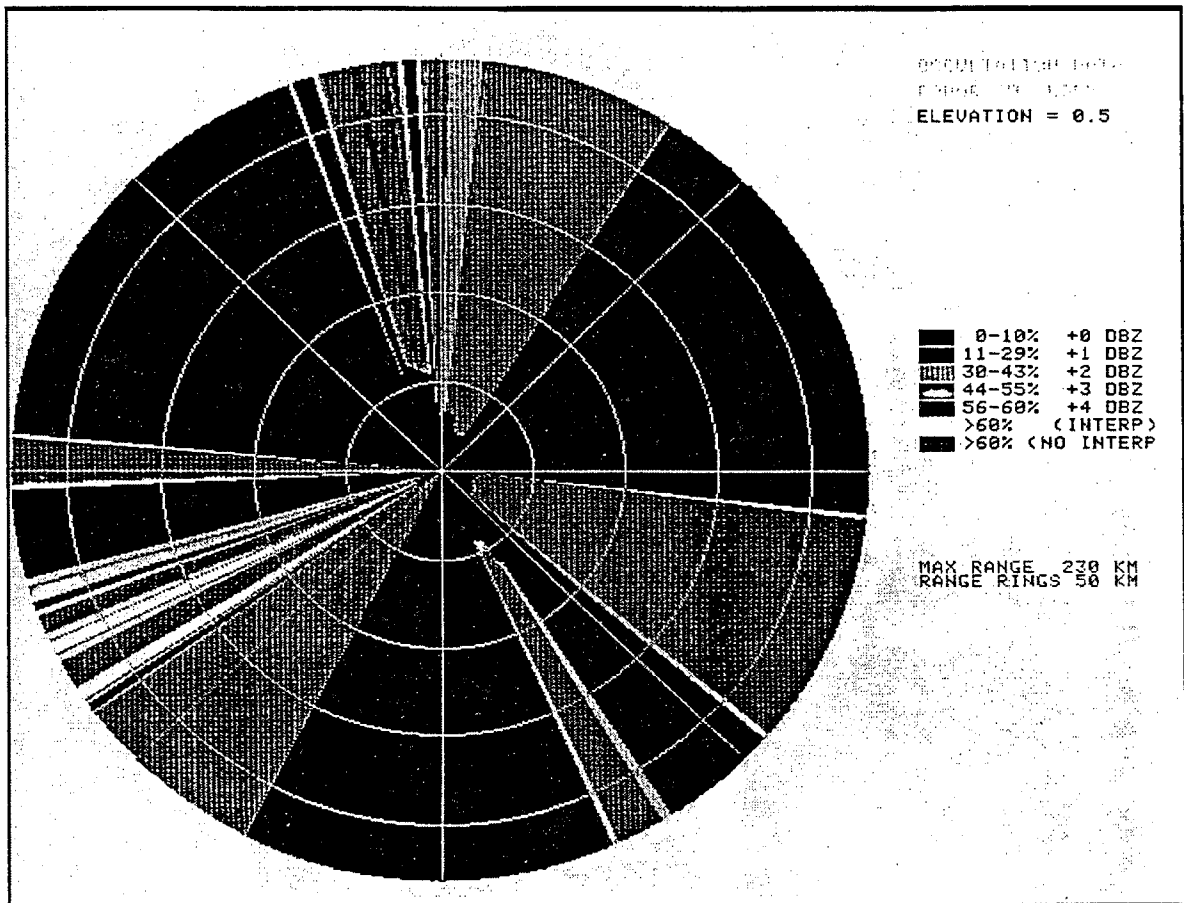


Figure 9: Occultation data for KEMX at Tucson. The lighter shades of gray indicate regions where the 0.5 degree elevation scan of KEMX is blocked by local topography.

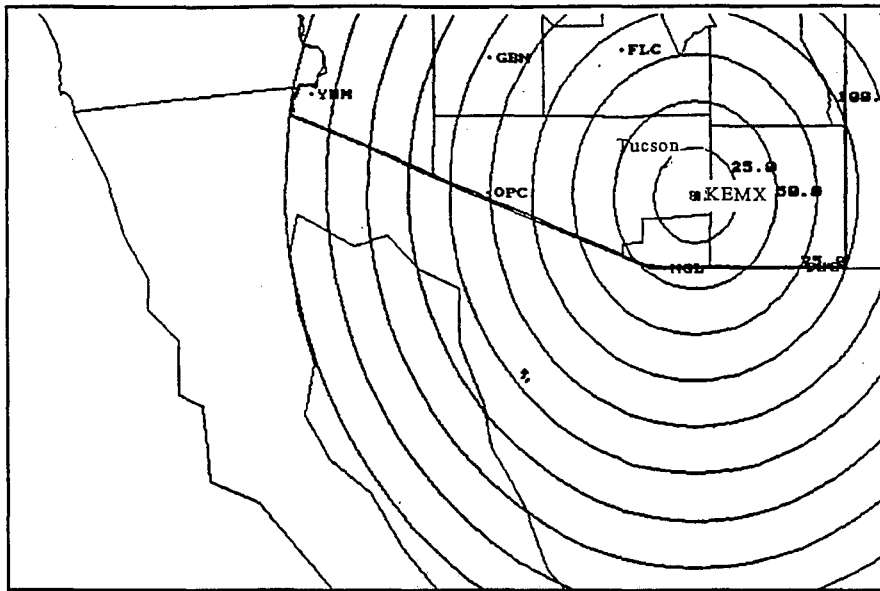


Figure 10a: Initial cloud-to-ground lightning strikes detected by the NLDN from the September 27-28, 1995 storm at 0515 UTC.

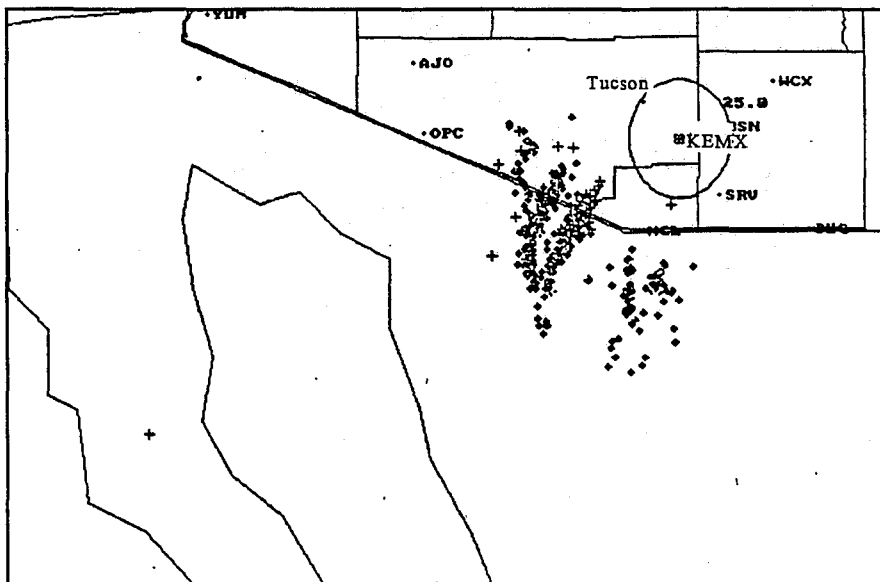


Figure 10b: Cloud-to-ground lightning strikes between 0515 and 0700 UTC as the storm of September 27-28 developed and strengthened.

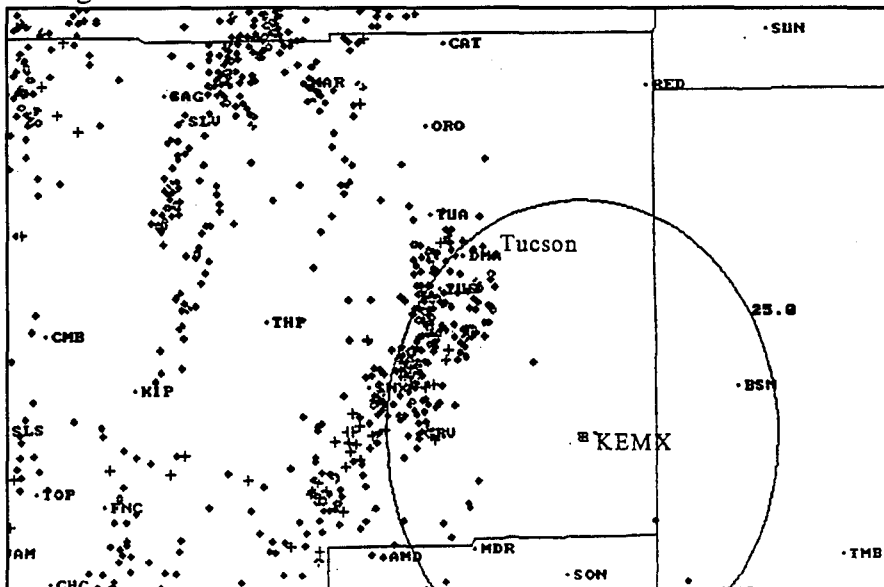


Figure 10c: Cloud-to-ground lightning history between 0800 and 0830 UTC during the time of heaviest rain in Tucson.

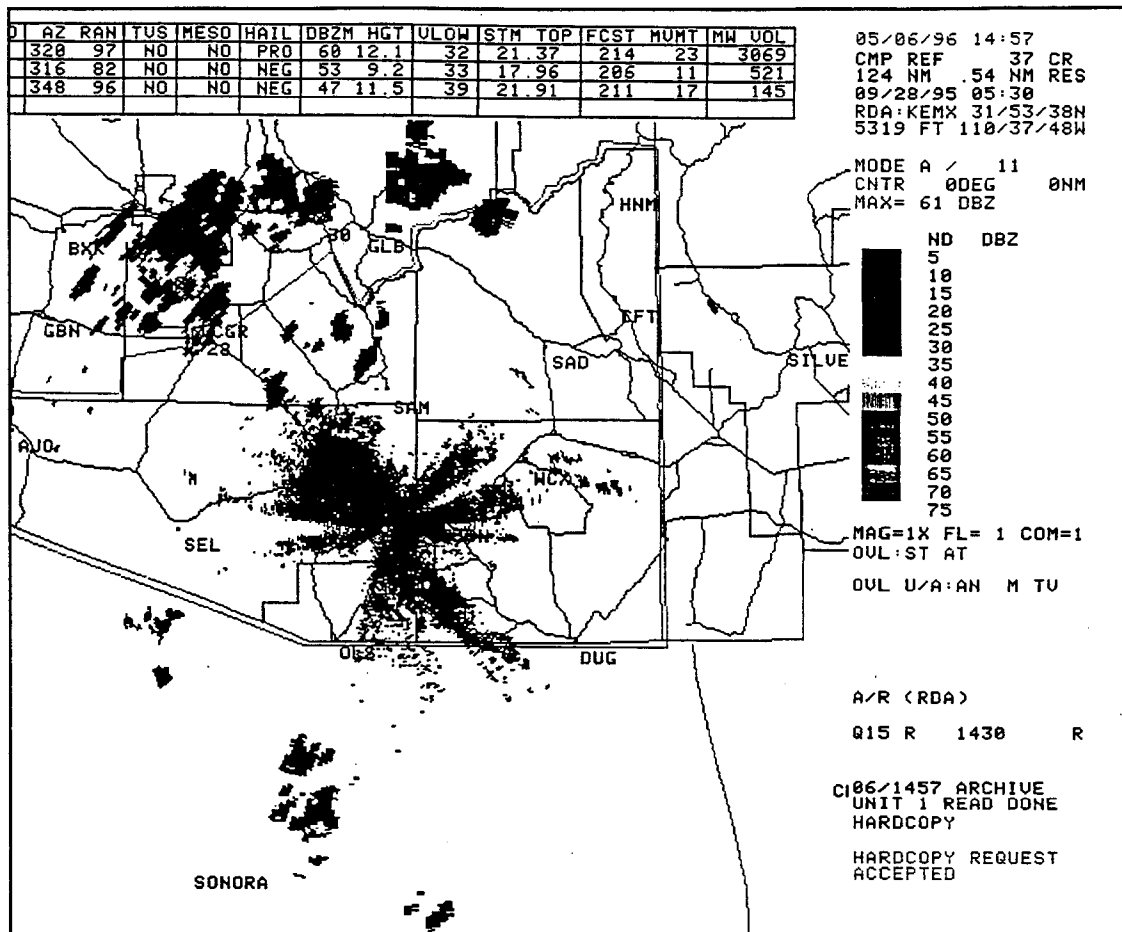


Figure 11: Composite reflectivity product from KEMX for September 27-28, 1995 at 0530 UTC.

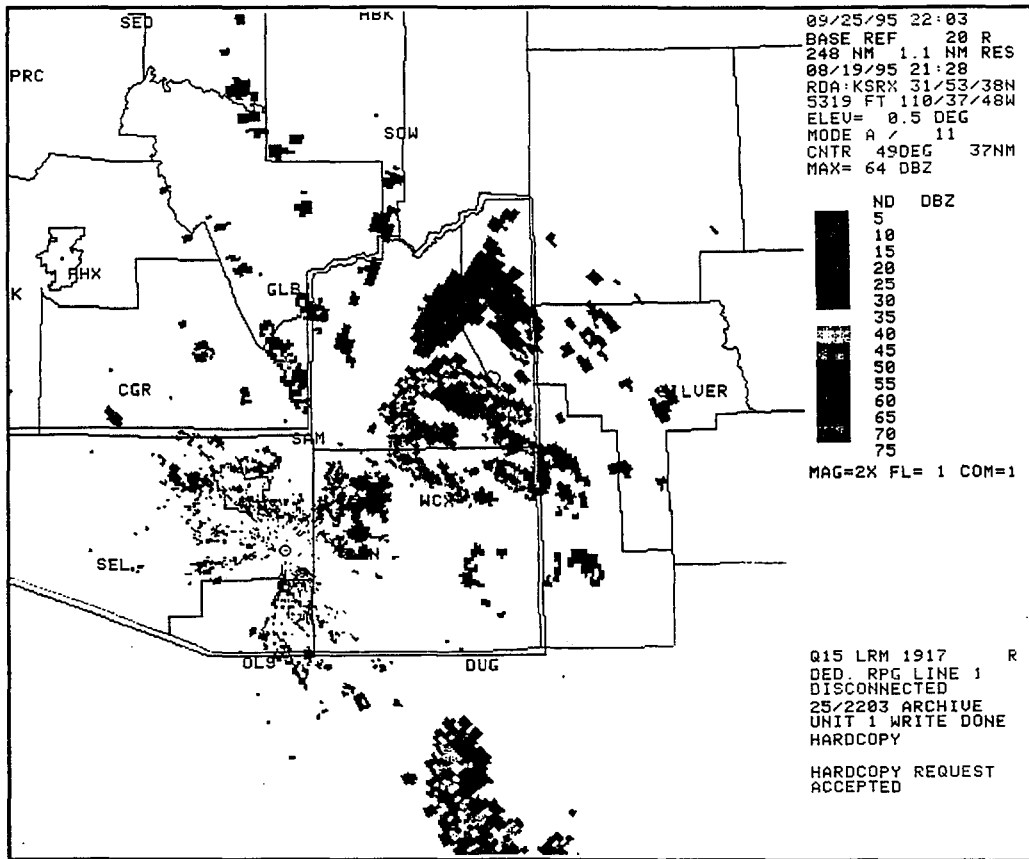


Figure 12a: The 0.5 degree base reflectivity for KEMX. Depicted is the initiation phase of the tropical squall line at 2128 UTC August 19, 1995.

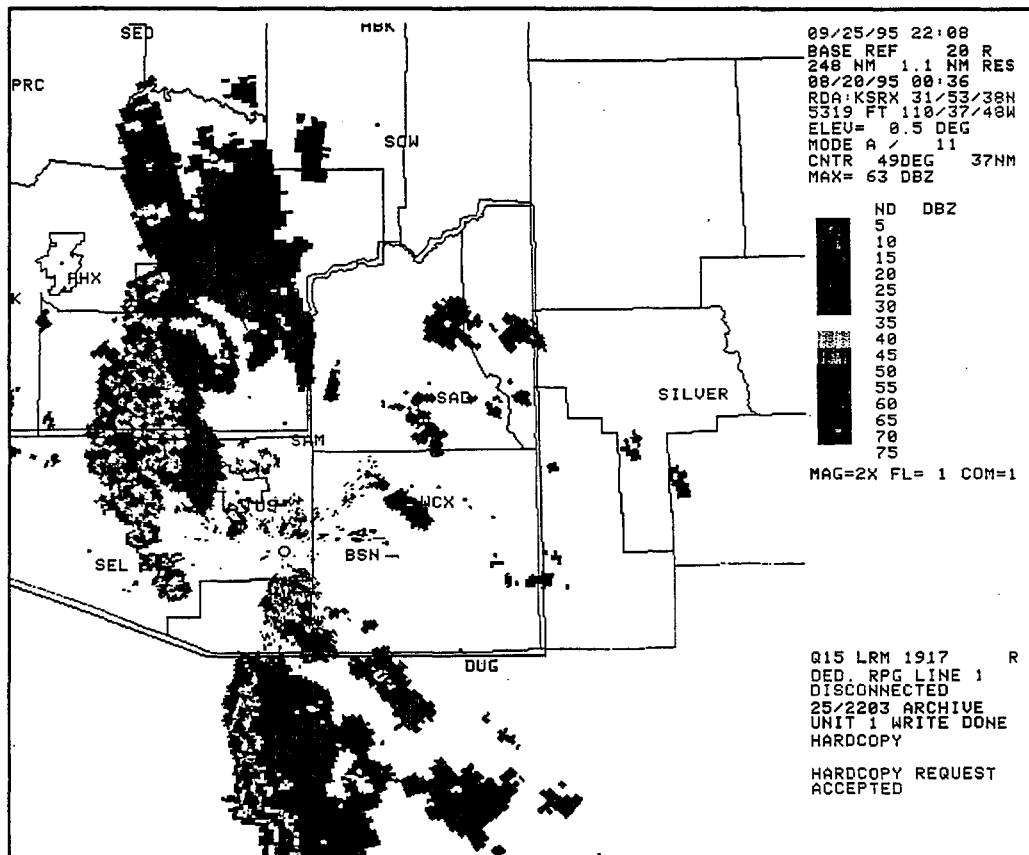


Figure 12b: Same as in (a) except for 0036 UTC. Mature phase of the tropical squall line.

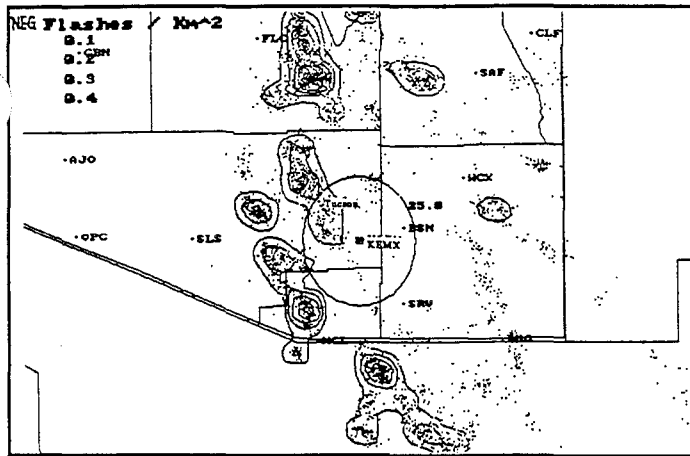


Figure 13a: Negative flashes for the two hour period ending at 0000 UTC August 20, 1995 with contoured flash density ($\text{km}^2\text{hr}^{-1}$). Figure (a) through (f) shows the history of cloud-to-ground flashes for the August 19, 1995 storm.

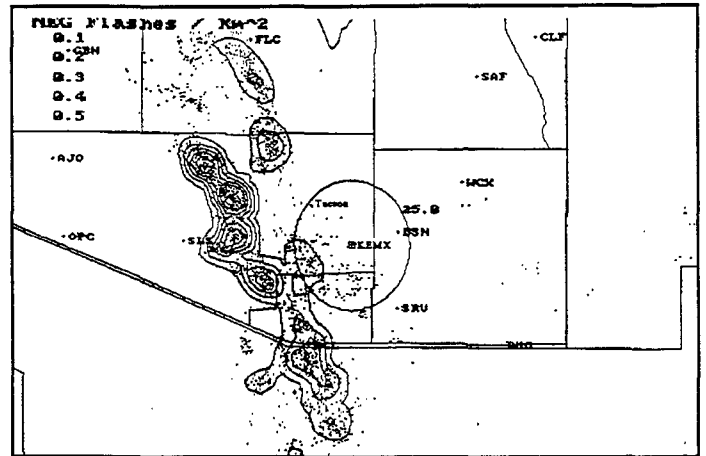


Figure 13b: Same as in (a) except ending at 0200 UTC.

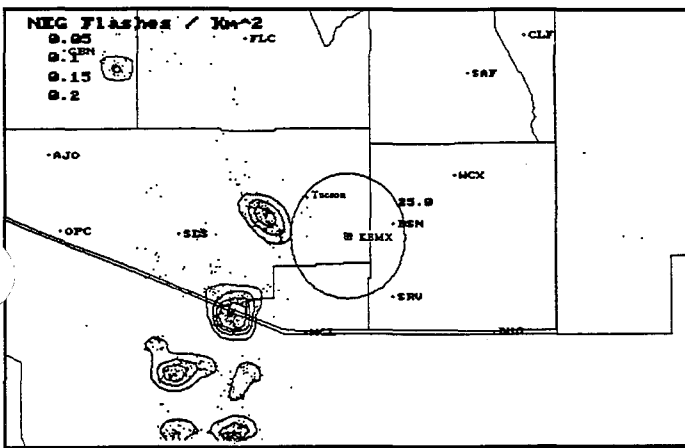


Figure 13c: Same as in (a) except ending at 0400 UTC.

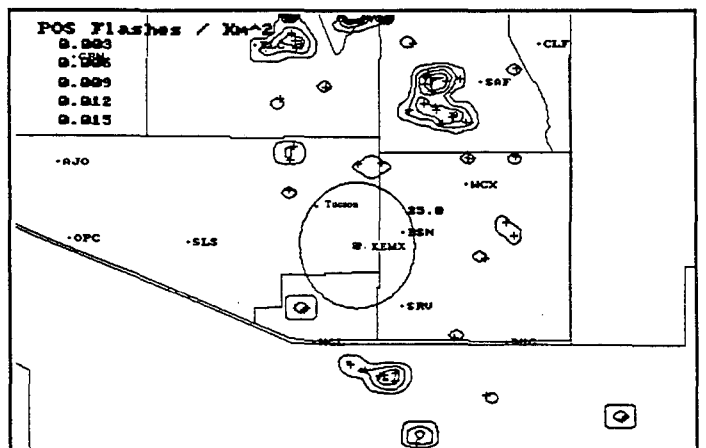


Figure 13d: Positive flashes for the two hour period ending at 0000 UTC August 20, 1995 with contoured flash density ($\text{km}^2\text{hr}^{-1}$).

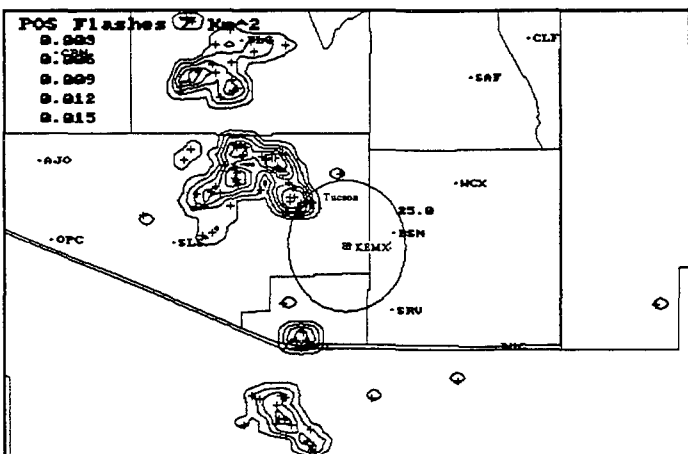


Figure 13e: Same as in (d) except ending at 0200 UTC.

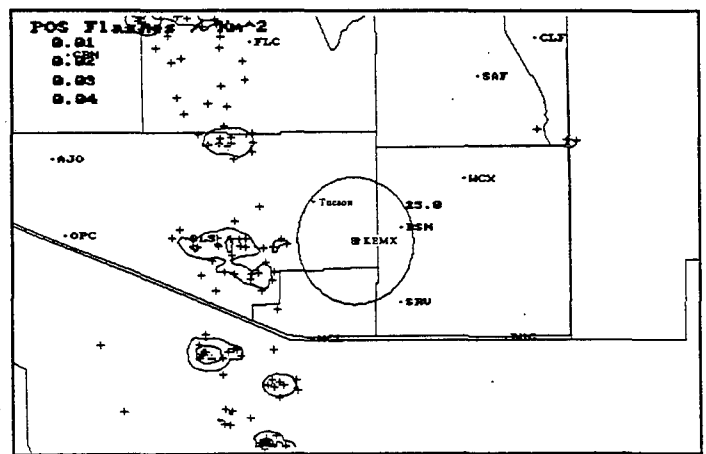


Figure 13f: Same as in (d) except ending at 0400 UTC.

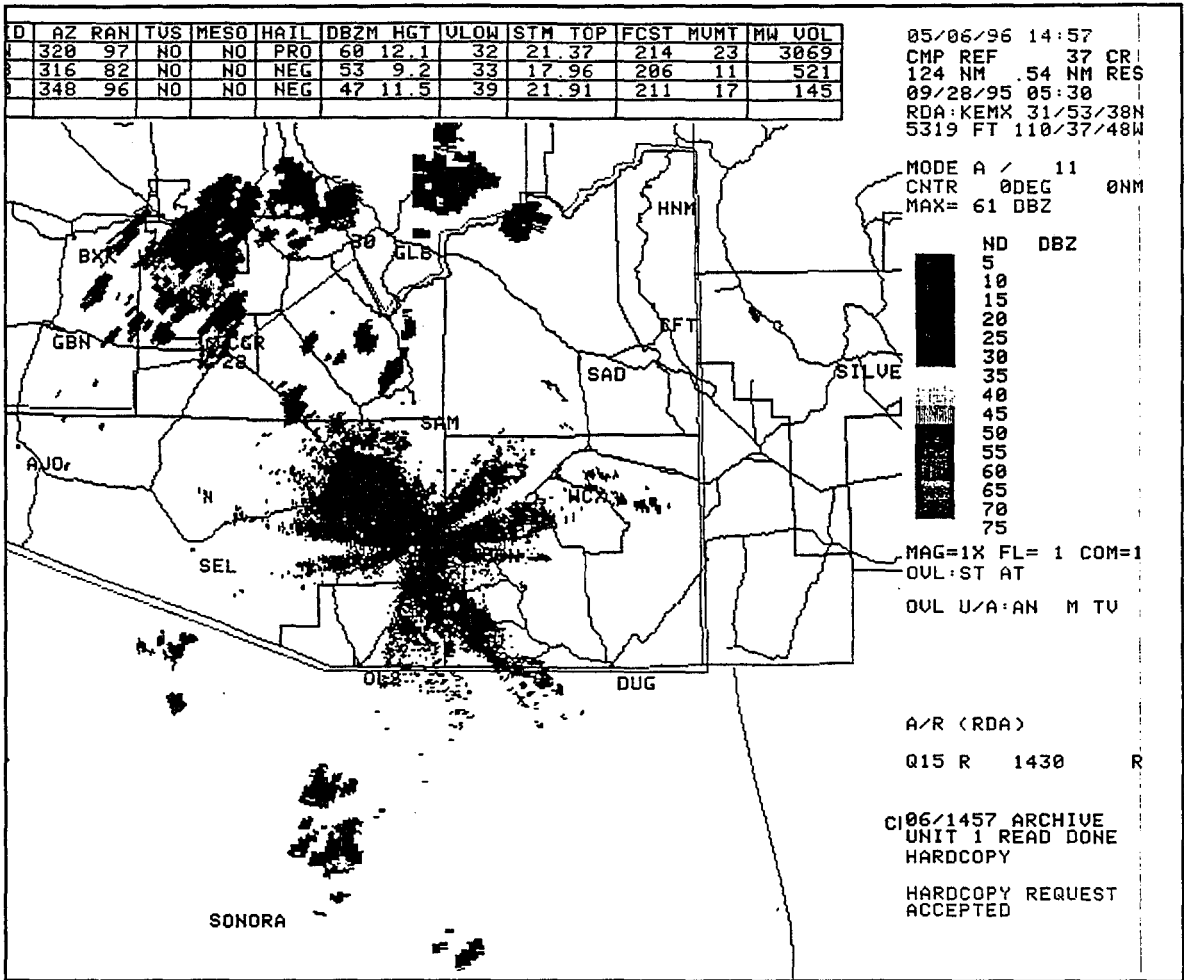


Figure 14a: Composite reflectivity from KEMX on September 27-28, 1995 at 0530 UTC showing the poor coverage of storms developing to the southwest in Mexico.

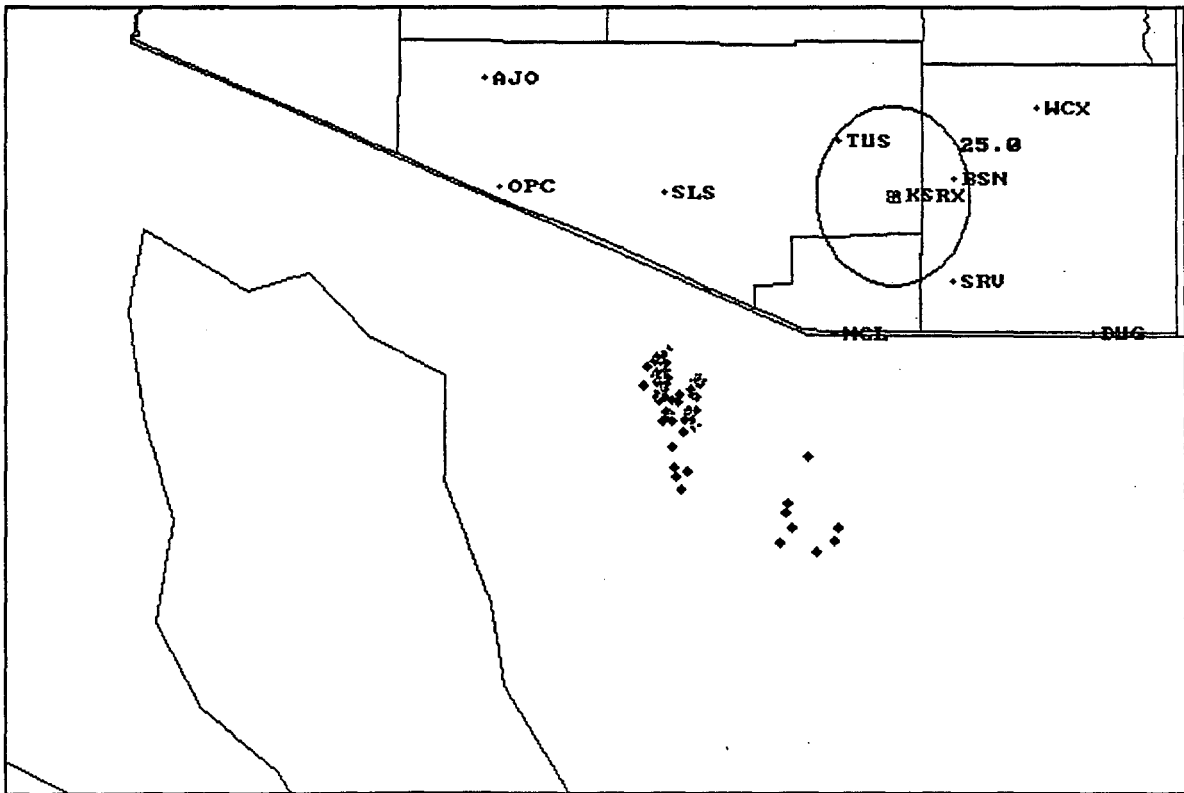


Figure 14b: Cloud-to-ground lightning data from the September 27-28, 1995 splitting supercell thunderstorms between 0515 and 0615 UTC.

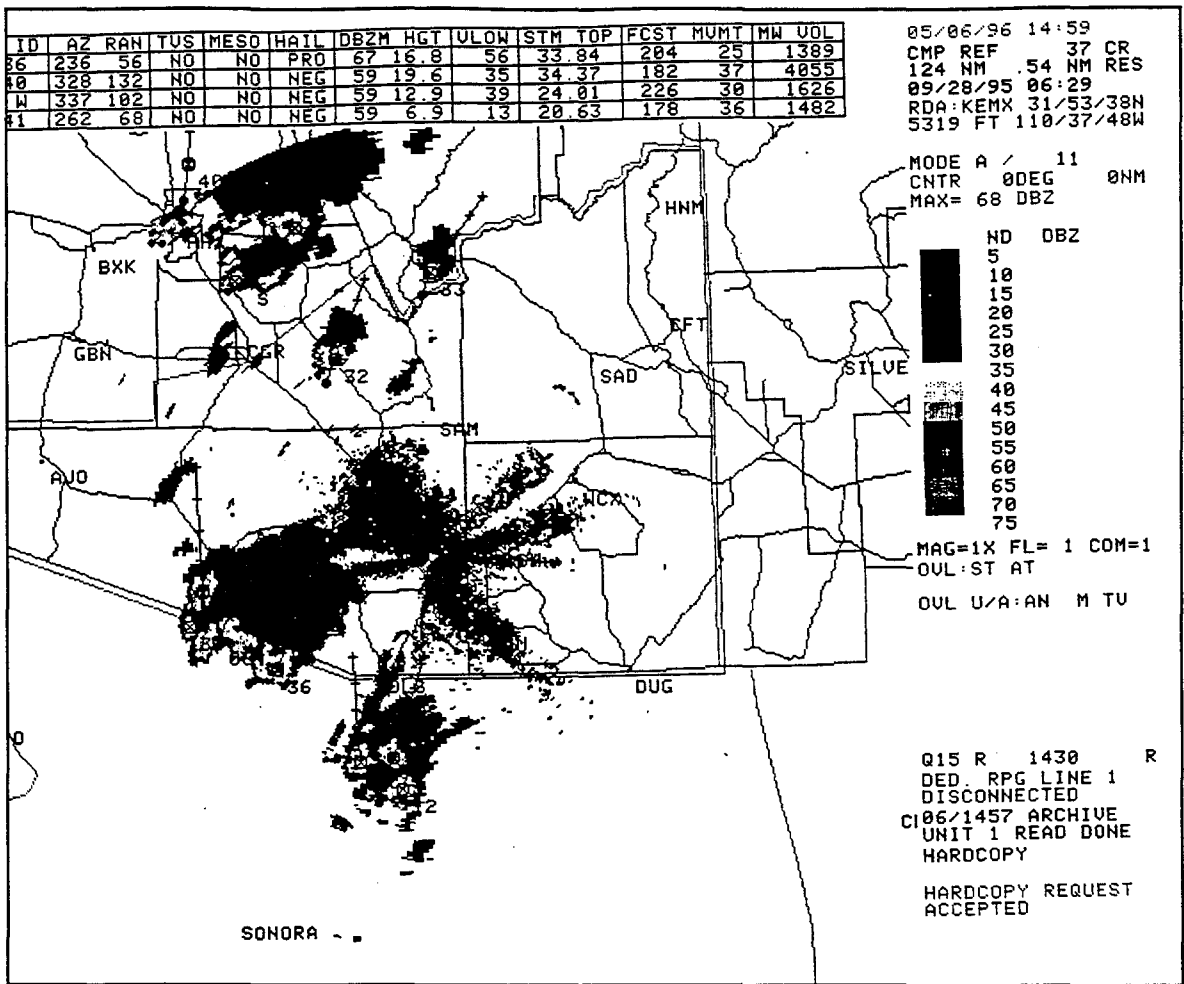


Figure 15a: Composite reflectivity from KEMX on September 27-28, 1995 at 0629 UTC showing improved coverage of storms as they moved closer to the radar.

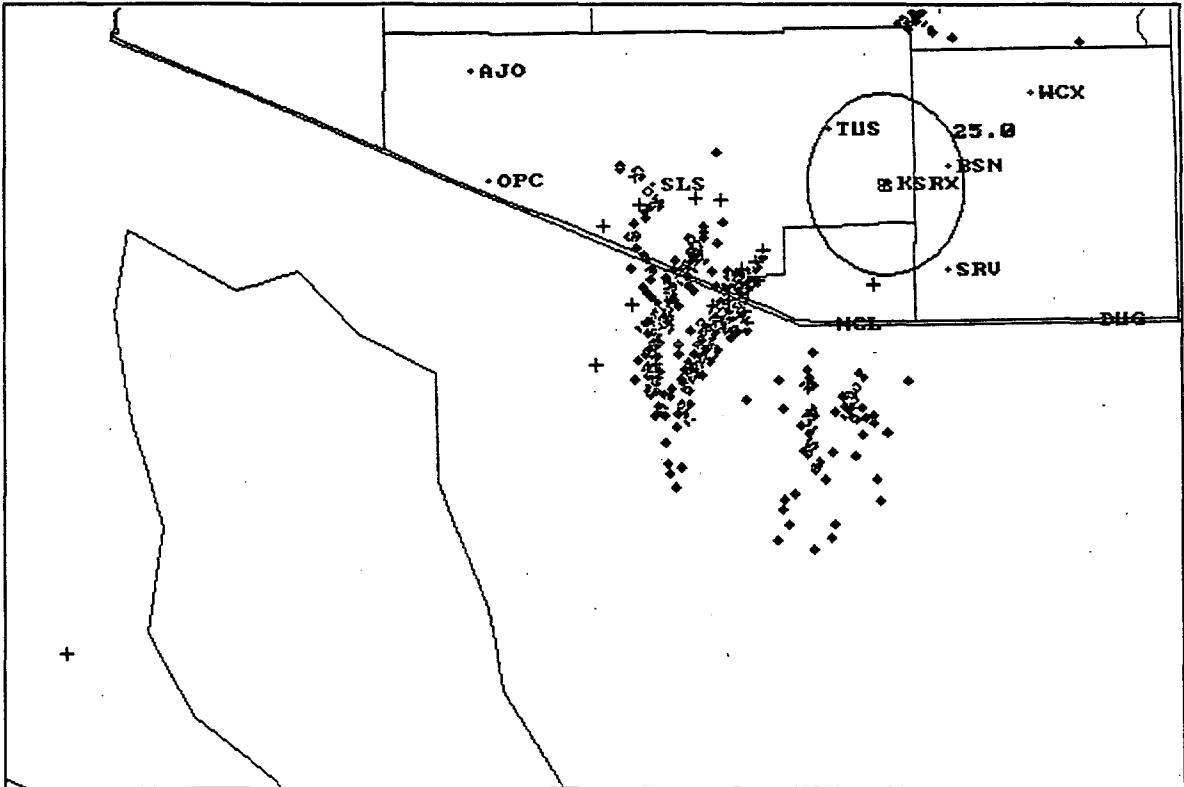


Figure 15b: Cloud-to-ground lightning data from the September 27-28, 1995 splitting supercell thunderstorms between 0515 and 0700 UTC.

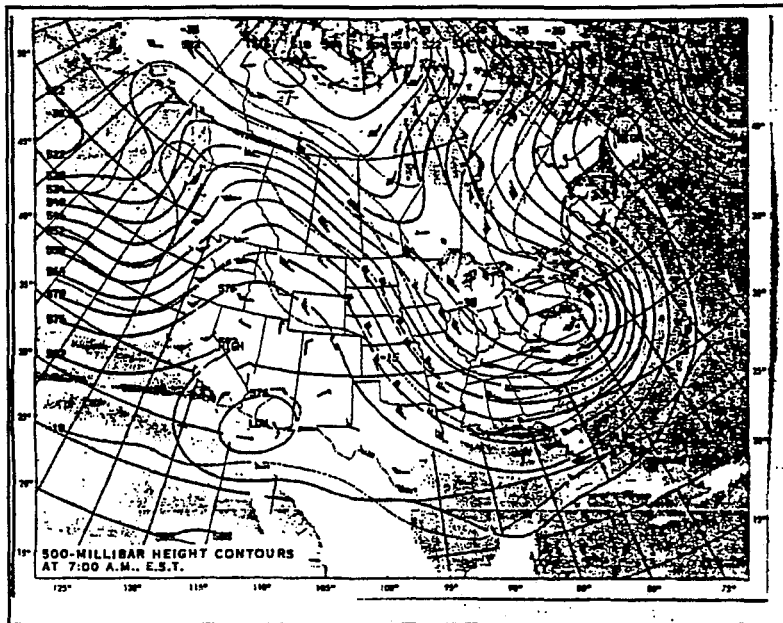


Figure 16: The 500 mb chart for 1200 UTC November 15, 1995 from Daily Weather Summary.

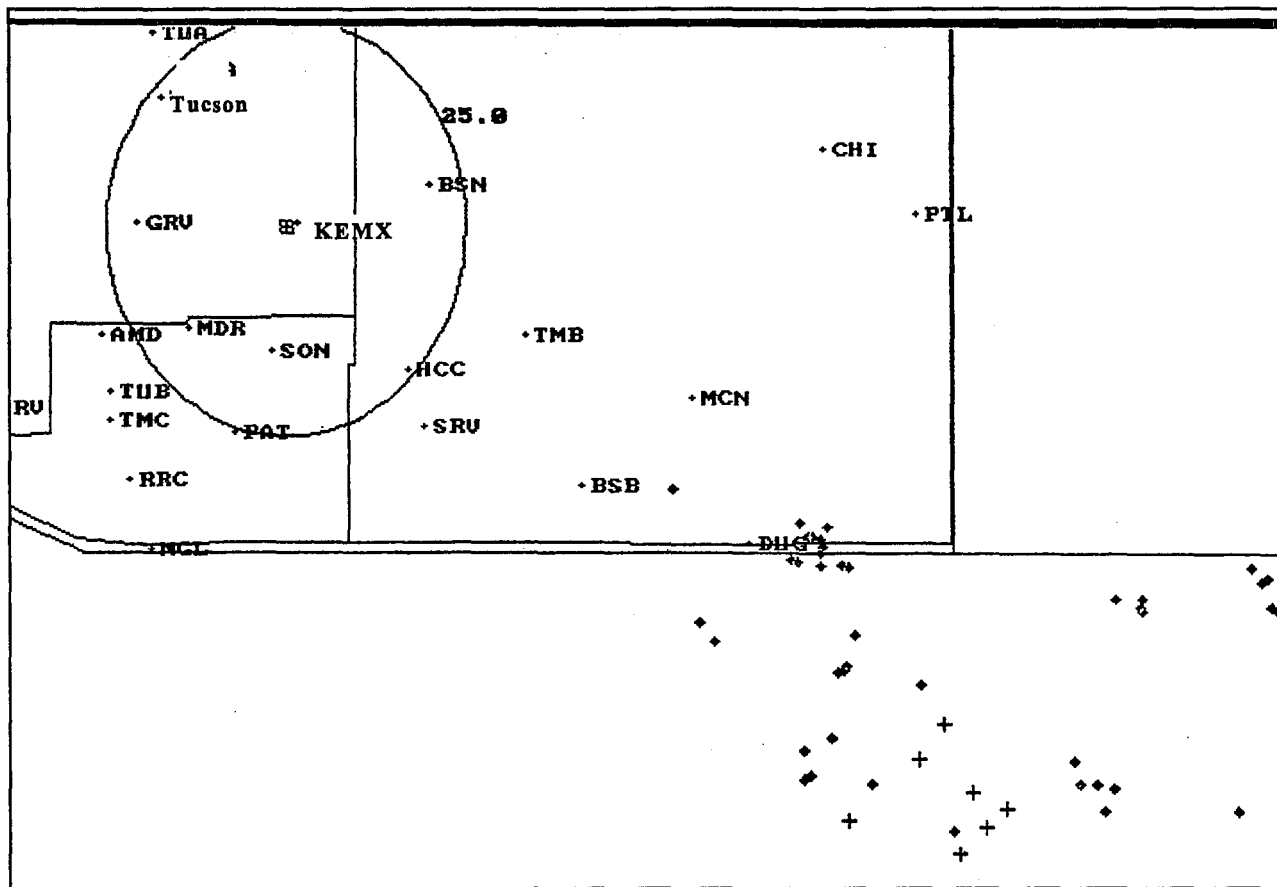


Figure 17: Lightning history for the low topped thunderstorms that occurred on November 15, 1995.

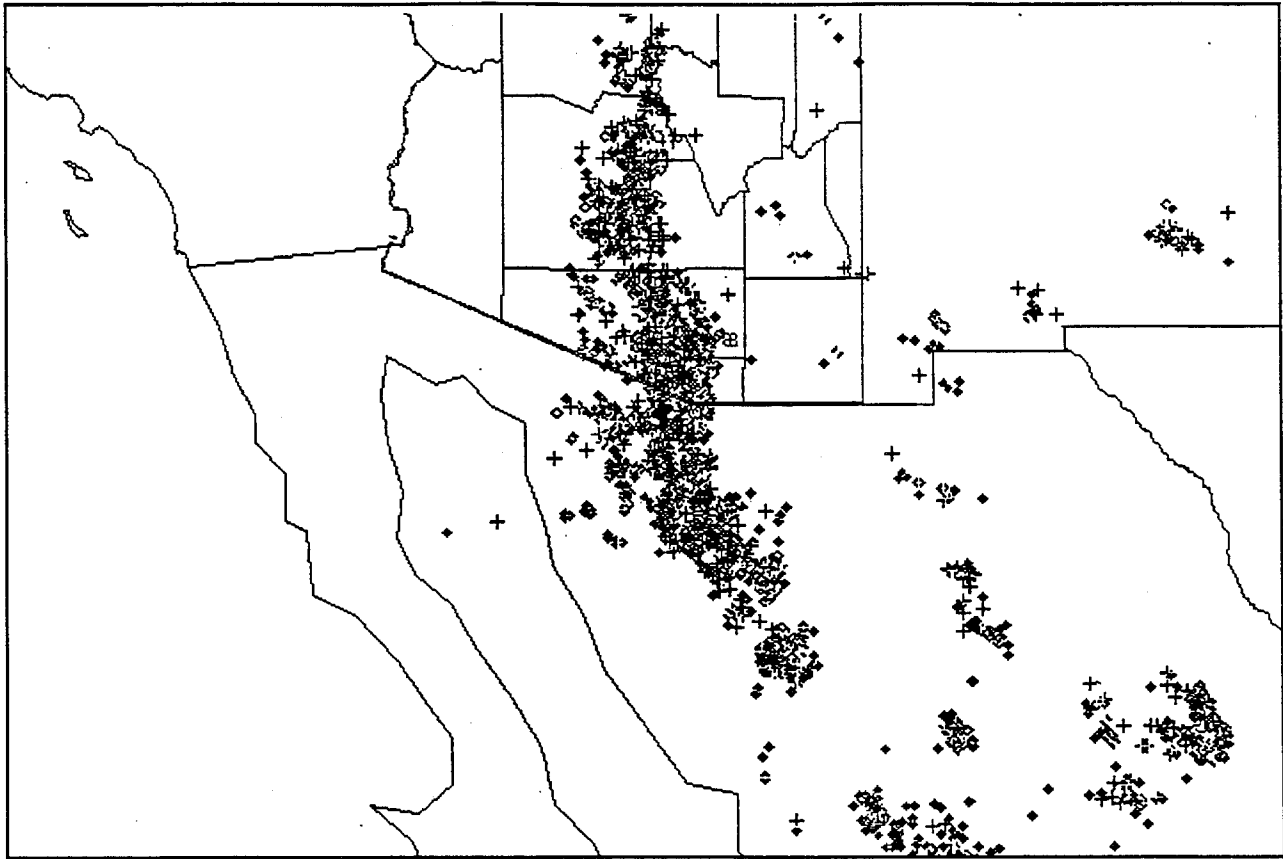


Figure 18: Depiction of NLDN cloud-to-ground lightning data coverage into Mexico.

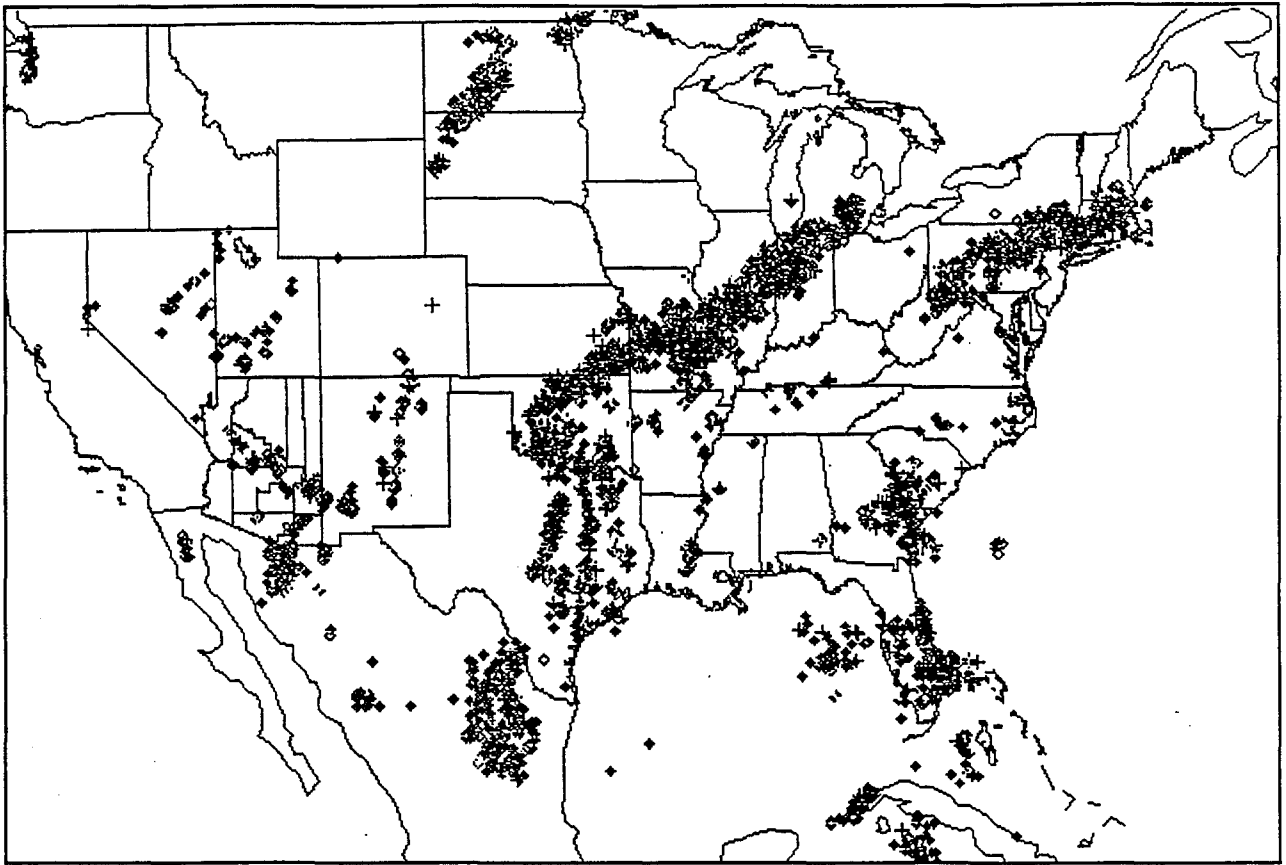


Figure 19a: Depiction of cloud-to-ground lightning data coverage on the national scale. Data depicted is from August 2, 1995.

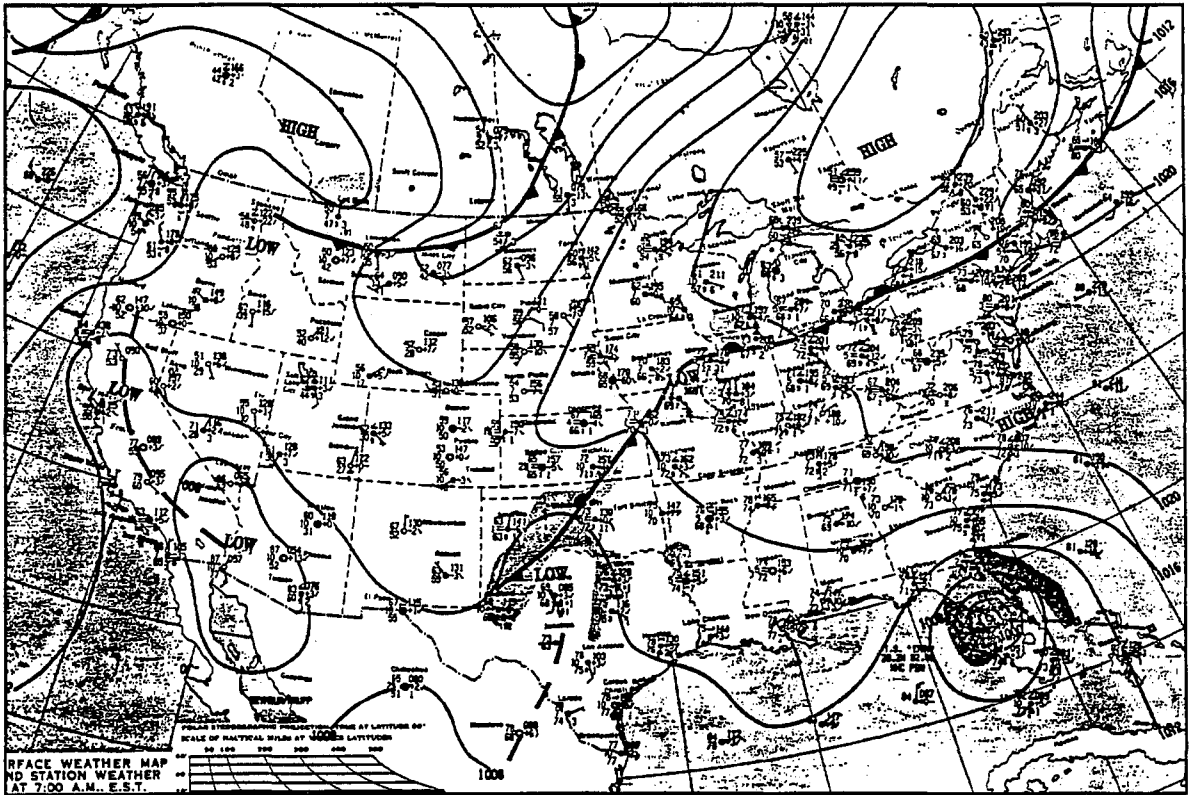


Figure 19b: Surface analysis from Daily Weather Summary for August 2, 1995 at 1200 UTC.

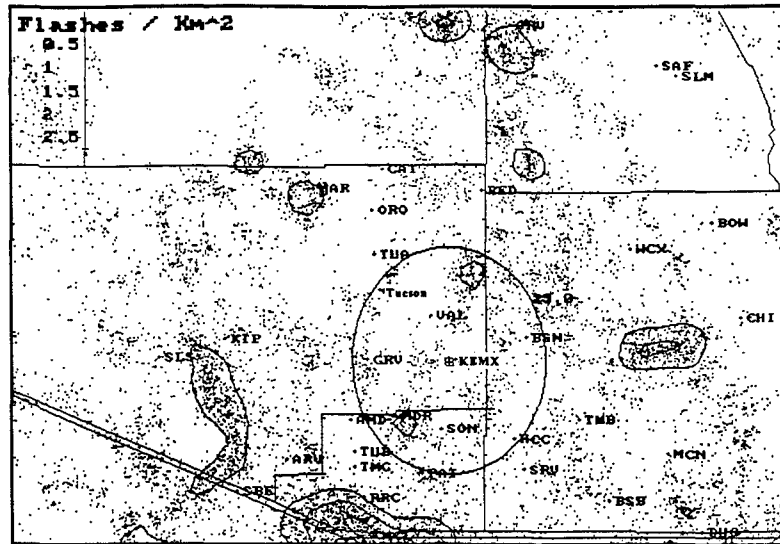


Figure 20a: Composite of cloud-to-ground lightning strikes across southeast Arizona for the period August 1 to August 11, 1995.

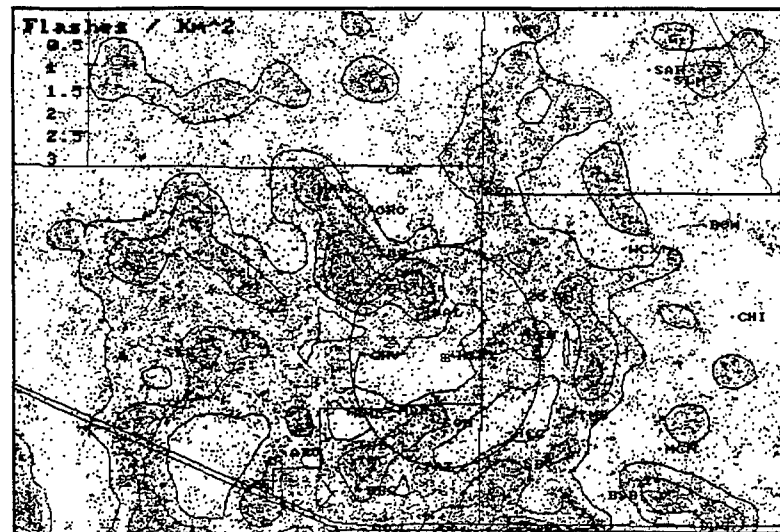


Figure 20b: Same as in (a) except August 11 through August 21, 1995.

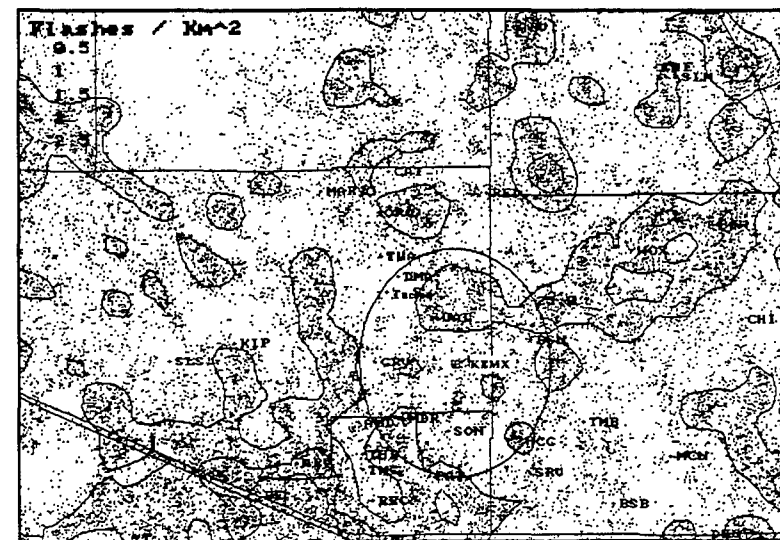


Figure 20c: Same as in (a) except August 21 through September 1, 1995.

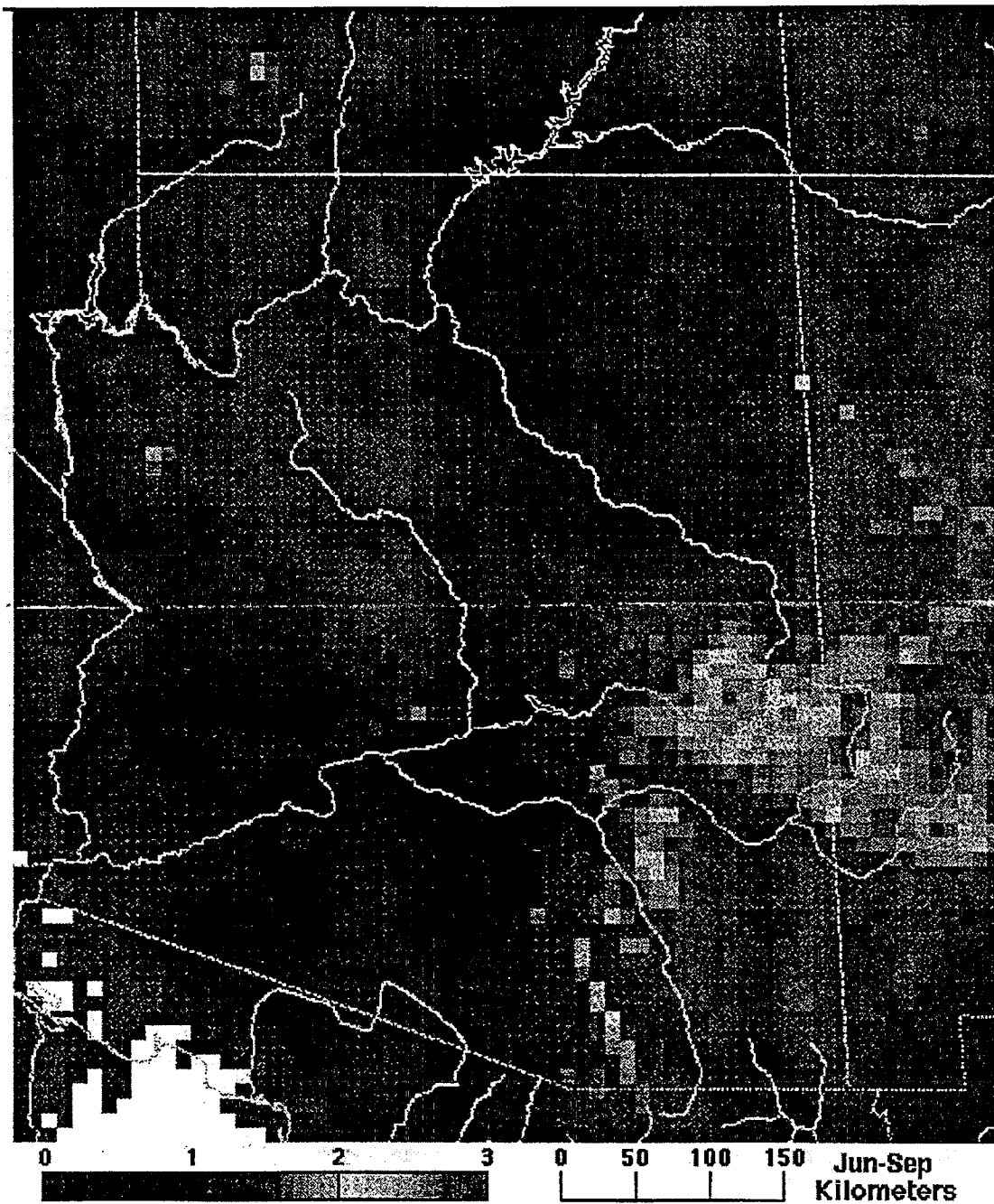


Figure 21: Average number of cloud-to-ground lightning strikes per square kilometer per year for an eight year period (1987-94) for the months of June through September for Arizona (Lopez et al. 1996).

- 144 Arizona Cool Season Climatological Surface Wind and Pressure Gradient Study. Ira S. Brenner, May 1979. (PB298900/AS)
- 146 The BART Experiment. Morris S. Webb, October 1979. (PB80 155112)
- 147 Occurrence and Distribution of Flash Floods in the Western Region. Thomas L. Dietrich, December 1979. (PB80 160344)
- 149 Misinterpretations of Precipitation Probability Forecasts. Allan H. Murphy, Sarah Lichtenstein, Baruch Fischhoff, and Robert L. Winkler, February 1980. (PB80 174576)
- 150 Annual Data and Verification Tabulation - Eastern and Central North Pacific Tropical Storms and Hurricanes 1979. Emil B. Gunther and Staff, EPHC, April 1980. (PB80 220486)
- NMC Model Performance in the Northeast Pacific. James E. Overland, PMEL-ERL, April 1980. (PB80 196033)
- Climate of Salt Lake City, Utah. William J. Alder, Sean T. Buchanan, William Cope (Retired), James A. Cisco, Craig C. Schmidt, Alexander R. Smith (Retired), Wilbur E. Figgins (Retired), April 1996 - Sixth Revision (PB96 175583)
- 153 An Automatic Lightning Detection System in Northern California. James E. Rea and Chris E. Fontana, June 1980. (PB80 225592)
- 154 Regression Equation for the Peak Wind Gust 6 to 12 Hours in Advance at Great Falls During Strong Downslope Wind Storms. Michael J. Oard, July 1980. (PB91 108367)
- 155 A Raininess Index for the Arizona Monsoon. John H. Ten Harkle, July 1980. (PB81 106494)
- 156 The Effects of Terrain Distribution on Summer Thunderstorm Activity at Reno, Nevada. Christopher Dean Hill, July 1980. (PB81 102501)
- 157 An Operational Evaluation of the Scofield/Oliver Technique for Estimating Precipitation Rates from Satellite Imagery. Richard Ochoa, August 1980. (PB81 108227)
- 158 Hydrology Practicum. Thomas Dietrich, September 1980. (PB81 134033)
- 159 Tropical Cyclone Effects on California. Arnold Court, October 1980. (PB81 133779)
- 160 Eastern North Pacific Tropical Cyclone Occurrences During Intraseasonal Periods. Preston W. Leftwich and Gail M. Brown, February 1981. (PB81 205494)
- 161 Solar Radiation as a Sole Source of Energy for Photovoltaics in Las Vegas, Nevada, for July and December. Darryl Randerson, April 1981. (PB81 224503)
- 162 A Systems Approach to Real-Time Runoff Analysis with a Deterministic Rainfall-Runoff Model. Robert J.C. Burnash and R. Larry Ferral, April 1981. (PB81 224495)
- 163 A Comparison of Two Methods for Forecasting Thunderstorms at Luke Air Force Base, Arizona. LTC Keith R. Cooley, April 1981. (PB81 225393)
- 164 An Objective Aid for Forecasting Afternoon Relative Humidity Along the Washington Cascade East Slopes. Robert S. Robinson, April 1981. (PB81 23078)
- 165 Annual Data and Verification Tabulation, Eastern North Pacific Tropical Storms and Hurricanes 1980. Emil B. Gunther and Staff, May 1981. (PB82 230336)
- 166 Preliminary Estimates of Wind Power Potential at the Nevada Test Site. Howard G. Booth, June 1981. (PB82 127036)
- 167 ARAP User's Guide. Mark Mathewson, July 1981, Revised September 1981. (PB82 196783)
- 168 Forecasting the Onset of Coastal Gales Off Washington-Oregon. John R. Zimmerman and William D. Burton, August 1981. (PB82 127051)
- 169 A Statistical-Dynamical Model for Prediction of Tropical Cyclone Motion in the Eastern North Pacific Ocean. Preston W. Leftwich, Jr., October 1981. (PB82 195298)
- 170 An Enhanced Plotter for Surface Airways Observations. Andrew J. Spry and Jeffrey L. Anderson, October 1981. (PB82 153883)
- 171 Verification of 72-Hour 500-MB Map-Type Predictions. R.F. Quiring, November 1981. (PB82-158098)
- 172 Forecasting Heavy Snow at Wenatchee, Washington. James W. Holcomb, December 1981. (PB82-177783)
- 173 Central San Joaquin Valley Type Maps. Thomas R. Crossan, December 1981. (PB82 196064)
- 174 ARAP Test Results. Mark A. Mathewson, December 1981. (PB82 198103)
- Approximations to the Peak Surface Wind Gusts from Desert Thunderstorms. Darryl Randerson, June 1982. (PB82 253089)
- Climate of Phoenix, Arizona. Robert J. Schmidli and Austin Jamison, April 1969 (Revised July 1996). (PB96-191614)
- 178 Annual Data and Verification Tabulation, Eastern North Pacific Tropical Storms and Hurricanes 1982. E.B. Gunther, June 1983. (PB85 106078)
- 179 Stratified Maximum Temperature Relationships Between Sixteen Zone Stations in Arizona and Respective Key Stations. Ira S. Brenner, June 1983. (PB83 249904)
- 180 Standard Hydrologic Exchange Format (SHEP) Version I. Phillip A. Pasteris, Vernon C. Bissel, David G. Bennett, August 1983. (PB85 106052)
- 181 Quantitative and Spatial Distribution of Winter Precipitation along Utah's Wasatch Front. Lawrence B. Dunn, August 1983. (PB85 106912)
- 182 500 Millibar Sign Frequency Teleconnection Charts - Winter. Lawrence B. Dunn, December 1983. (PB85 106276)
- 183 500 Millibar Sign Frequency Teleconnection Charts - Spring. Lawrence B. Dunn, January 1984. (PB85 111367)
- 184 Collection and Use of Lightning Strike Data in the Western U.S. During Summer 1983. Glenn Rasch and Mark Mathewson, February 1984. (PB85 110534)
- 185 500 Millibar Sign Frequency Teleconnection Charts - Summer. Lawrence B. Dunn, March 1984. (PB85 111359)
- 186 Annual Data and Verification Tabulation eastern North Pacific Tropical Storms and Hurricanes 1983. E.B. Gunther, March 1984. (PB85 109635)
- 187 500 Millibar Sign Frequency Teleconnection Charts - Fall. Lawrence B. Dunn, May 1984. (PB85-110930)
- 188 The Use and Interpretation of Isentropic Analyses. Jeffrey L. Anderson, October 1984. (PB85-132694)
- 189 Annual Data & Verification Tabulation Eastern North Pacific Tropical Storms and Hurricanes 1984. E.B. Gunther and R.L. Cross, April 1985. (PB85 1878887AS)
- 190 Great Salt Lake Effect Snowfall: Some Notes and An Example. David M. Carpenter, October 1985. (PB86 119153/AS)
- 191 Large Scale Patterns Associated with Major Freeze Episodes in the Agricultural Southwest. Ronald S. Hamilton and Glenn R. Lussky, December 1985. (PB86 144474AS)
- 192 NWR Voice Synthesis Project: Phase I. Glen W. Sampson, January 1986. (PB86 145604/AS)
- 193 The MCC - An Overview and Case Study on Its Impact in the Western United States. Glenn R. Lussky, March 1986. (PB86 170651/AS)
- 194 Annual Data and Verification Tabulation Eastern North Pacific Tropical Storms and Hurricanes 1985. E.B. Gunther and R.L. Cross, March 1986. (PB86 170941/AS)
- 195 Radii Interpretation Guidelines. Roger G. Pappas, March 1986. (PB86 177680/AS)
- 196 A Mesoscale Convective Complex Type Storm over the Desert Southwest. Darryl Randerson, April 1986. (PB86 190998/AS)
- 197 The Effects of Eastern North Pacific Tropical Cyclones on the Southwestern United States. Walter Smith, August 1986. (PB87 106258AS)
- 198 Preliminary Lightning Climatology Studies for Idaho. Christopher D. Hill, Carl J. Gorski, and Michael C. Conger, April 1987. (PB87 180196/AS)
- Heavy Rains and Flooding in Montana: A Case for Slantwise Convection. Glenn R. Lussky, April 1987. (PB87 185229/AS)
- Annual Data and Verification Tabulation Eastern North Pacific Tropical Storms and Hurricanes 1986. Roger L. Cross and Kenneth B. Mielke, September 1987. (PB88 110895/AS)
- 201 An Inexpensive Solution for the Mass Distribution of Satellite Images. Glen W. Sampson and George Clark, September 1987. (PB88 114038/AS)
- 202 Annual Data and Verification Tabulation Eastern North Pacific Tropical Storms and Hurricanes 1987. Roger L. Cross and Kenneth B. Mielke, September 1988. (PB88-101935/AS)
- 203 An Investigation of the 24 September 1986 "Cold Sector" Tornado Outbreak in Northern California. John P. Monteverdi and Scott A. Braun, October 1988. (PB89 121297/AS)
- 204 Preliminary Analysis of Cloud-To-Ground Lightning in the Vicinity of the Nevada Test Site. Carven Scott, November 1988. (PB89 128649/AS)
- 205 Forecast Guidelines For Fire Weather and Forecasters -- How Nighttime Humidity Affects Wildland Fuels. David W. Goens, February 1989. (PB89 162549/AS)
- 206 A Collection of Papers Related to Heavy Precipitation Forecasting. Western Region Headquarters, Scientific Services Division, August 1989. (PB89 230833/AS)
- 207 The Las Vegas McCarran International Airport Microburst of August 8, 1989. Carven A. Scott, June 1990. (PB90-240268)
- 208 Meteorological Factors Contributing to the Canyon Creek Fire Blowup, September 6 and 7, 1988. David W. Goens, June 1990. (PB90-245085)
- 209 Status Surge Prediction Along the Central California Coast. Peter Felsch and Woodrow Whitlatch, December 1990. (PB91-129239)
- 210 Hydrotools. Tom Egger, January 1991. (PB91-151787/AS)
- 211 A Northern Utah Soaker. Mark E. Struthwolf, February 1991. (PB91-168716)
- 212 Preliminary Analysis of the San Francisco Rainfall Record: 1849-1990. Jan Null, May 1991. (PB91-208439)
- 213 Idaho Zone Preformat, Temperature Guidance, and Verification. Mark A. Mollner, July 1991. (PB91-227405/AS)
- 214 Emergency Operational Meteorological Considerations During an Accidental Release of Hazardous Chemicals. Peter Mueller and Jerry Galt, August 1991. (PB91-235424)
- 215 WeatherTools. Tom Egger, October 1991. (PB93-184950)
- 216 Creating MOS Equations for RAW5 Stations Using Digital Model Data. Dennis D. Getman, December 1991. (PB92-131473/AS)
- 217 Forecasting Heavy Snow Events in Missoula, Montana. Mike Richmond, May 1992. (PB92-196104)
- 218 NWS Winter Weather Workshop in Portland, Oregon. Various Authors, December 1992. (PB93-146785)
- 219 A Case Study of the Operational Usefulness of the Sharp Workstation in Forecasting a Mesocyclone-Induced Cold Sector Tornado Event in California. John P. Monteverdi, March 1993. (PB93-178697)
- 220 Climate of Pendleton, Oregon. Claudia Bell, August 1993. (PB93-227536)
- 221 Utilization of the Bulk Richardson Number, Helicity and Sounding Modification in the Assessment of the Severe Convective Storms of 3 August 1992. Eric C. Evenson, September 1993. (PB94-131943)
- 222 Convective and Rotational Parameters Associated with Three Tornado Episodes in Northern and Central California. John P. Monteverdi and John Quadros, September 1993. (PB94-131943)
- 223 Climate of San Luis Obispo, California. Gary Ryan, February 1994. (PB94-162062)
- 224 Climate of Wenatchee, Washington. Michael W. McFarland, Roger G. Buckman, and Gregory E. Matzen, March 1994. (PB94-164308)
- 225 Climate of Santa Barbara, California. Gary Ryan, December 1994. (PB95-173720)
- 226 Climate of Yakima, Washington. Greg DeVoir, David Hogan, and Jay Neher, December 1994. (PB95-173688)
- 227 Climate of Kalispell, Montana. Chris Maier, December 1994. (PB95-169488)
- 228 Forecasting Minimum Temperatures in the Santa Maria Agricultural District. Wilfred Pi and Peter Felsch, December 1994. (PB95-171088)
- 229 The 10 February 1994 Oroville Tornado--A Case Study. Mike Staudenmaier, Jr., April 1995. (PB95-241873)
- 230 Santa Ana Winds and the Fire Outbreak of Fall 1993. Ivory Small, June 1995. (PB95-241865)
- 231 Washington State Tornadoes. Tresté Huse, July 1995. (PB96-107024)
- 232 Fog Climatology at Spokane, Washington. Paul Frisbie, July 1995. (PB96-106804)
- 233 Storm Relative Isentropic Motion Associated with Cold Fronts in Northern Utah. Kevin B. Baker, Kathleen A. Hadley, and Lawrence B. Dunn, July 1995. (PB96-106596)
- 234 Some Climatological and Synoptic Aspects of Severe Weather Development in the Northwestern United States. Eric C. Evenson and Robert H. Johns, October 1995. (PB96-112958)
- 235 Climate of Las Vegas, Nevada. Paul H. Skrbac and Scott Cordero, December 1995. (PB96-135553)
- 236 Climate of Astoria, Oregon. Mark A. McInerney, January 1996.
- 237 The 6 July 1995 Severe Weather Events in the Northwestern United States: Recent Examples of SSWEs. Eric C. Evenson, April 1996.
- 238 Significant Weather Patterns Affecting West Central Montana. Joe Lester, May 1996. (PB96-178751)
- 239 Climate of Portland, Oregon. Clinton C. D. Rocky, May 1996. (PB96-17603)
- 240 Downslope Winds of Santa Barbara, CA. Gary Ryan, July 1996 (PB96-191697)

NOAA SCIENTIFIC AND TECHNICAL PUBLICATIONS

The National Oceanic and Atmospheric Administration was established as part of the Department of Commerce on October 3, 1970. The mission responsibilities of NOAA are to assess the socioeconomic impact of natural and technological changes in the environment and to monitor and predict the state of the solid Earth, the oceans and their living resources, the atmosphere, and the space environment of the Earth.

The major components of NOAA regularly produce various types of scientific and technical information in the following kinds of publications.

PROFESSIONAL PAPERS—Important definitive research results, major techniques, and special investigations.

CONTRACT AND GRANT REPORTS—Reports prepared by contractors or grantees under NOAA sponsorship.

ATLAS—Presentation of analyzed data generally in the form of maps showing distribution of rainfall, chemical and physical conditions of oceans and atmosphere, distribution of fishes and marine mammals, ionospheric conditions, etc.

TECHNICAL SERVICE PUBLICATIONS -- Reports containing data, observations, instructions, etc. A partial listing includes data serials; prediction and outlook periodicals; technical manuals, training papers, planning reports, and information serials; and miscellaneous technical publications.

TECHNICAL REPORTS—Journal quality with extensive details, mathematical developments, or data listings.

TECHNICAL MEMORANDUMS—Reports of preliminary, partial, or negative research or technology results, interim instructions, and the like.



Information on availability of NOAA publications can be obtained from:

NATIONAL TECHNICAL INFORMATION SERVICE

U. S. DEPARTMENT OF COMMERCE

5285 PORT ROYAL ROAD

SPRINGFIELD, VA 22161