

National Weather Service Office of Dissemination Status Update

January 11, 2018

NWS Partners Meeting
AMS 98th Annual Meeting
Austin, Texas



IDP Monitoring & Data Availability

NCO Monitored System Status

Note: This dashboard is an overall snapshot of the system status since the last NWSOC briefing (effective 7:30 a.m. Eastern Time each federal business day).

NCO System Status

[Click to Update Status \(Refresh Page When Complete\)](#)

Last Updated: 1/3/2018 7:33:12

Overall Status:

Additional Operational and/or Milestone Comments:

Dissemination	Reports of CAP 1.2 performing slowly. Ticket open.
	Followup from January 2 - Many offices having problems posting content to their web pages. Capacity limit is being exceeded. NCO sent out recommendations to the field to hopefully prevent the problem until a permanent solution is developed.

IDP Applications

BMT	Chart Tile	EDIS	FTP	FTPMail	FTPPush
FTPS	GIS	GISC/OpenWIS	GMDSS	HC Extended	HC Legacy
HF Fax	Himawari	INWS	IRIS	MADIS	MAG
MRMS	Network	NIDS (IDP)	NLETS	NOMADS	nowCOAST
Radar 2	Radar 3	SNOTEL	Sockets	SPOT	TGFTP
Trouble Tickets	VLAB	Weather Wire			

Non-IDP Applications

AHPS	CADAS	EMWIN	NDFD	NIDS (Non-IDP)	NWSChat
Other					

NCO System Status

Page 2: All Other Systems

Last Updated: 1/3/2018 7:33:12

Overall Status:

Additional Operational and/or Milestone Comments:

Circuits	None
----------	------

Observations	Lightning	Marine	RADAR	Satellite	Surface
	Upper Air	Other			
Montague radar was repaired (early) yesterday at 18Z					
Transition from GOES13 to GOES16 delayed due to CWD					
Tasked CARCAH with WSR flight for East coast					
2105-2340Z NESDIS GMGSI (global mosaic) imagery was unavailable					

Central Proc.	AWIPS	Models	NAWIPS	Regional IT	WCOSS
	None				

AFS	None
	None

Reporting / Escalation

301-713-0902

TOC.nwstg@noaa.gov or

301-683-1500 /

SDM@noaa.gov

Ben Kyger, NCO Director,

Ben.Kyger@noaa.gov

TGFTP/FTPPRD/RADAR

Performance Metrics:

Feb – Dec 2017

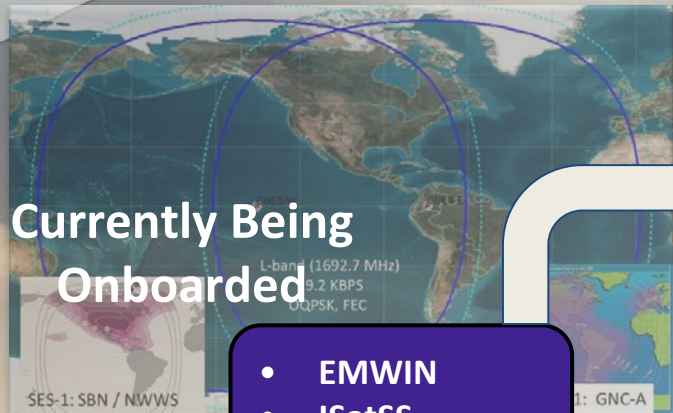
99.8% availability

IDP Performance Metrics:

Feb - Dec 2017

99.4% availability

January 2018 Status of IDP Applications



Currently Being Onboarded

- EMWIN
- ISatSS
- Ridge-2

Future Functionality at IDP College Park and Boulder

- Weather.Gov*
- SPOT*
- NWSChat

* Available at IDP- College Park and at the Web Farms in Kansas City, MD and Silver Spring, MD

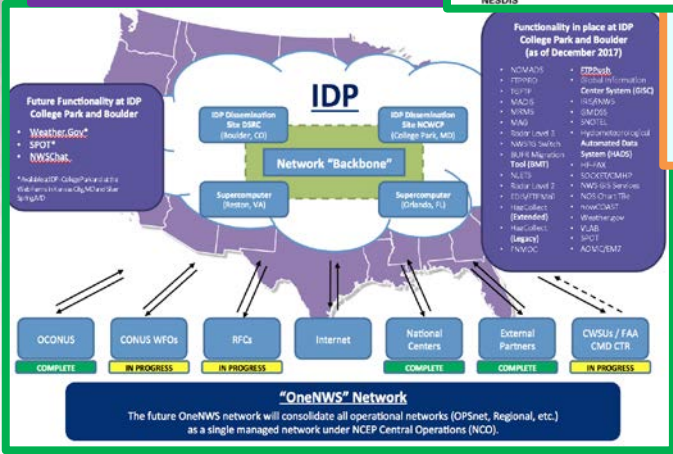
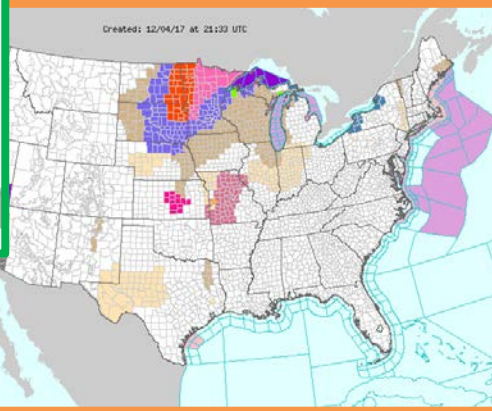
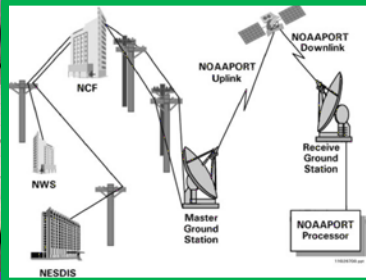
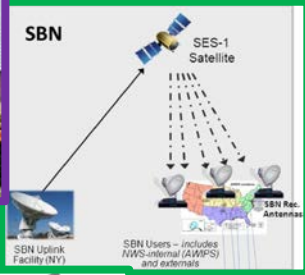
Future

Successfully Onboarded

Functionality in place at IDP College Park and Boulder (as of January 2018)

- NOMADS
- FTPPRD
- TGFTP
- MADIS
- MRMS
- MAG
- Radar Level 3
- NWSTG Switch
- BUFR Migration Tool (BMT)
- NLETS
- Radar Level 2
- EDIS/FTPMail
- HazCollect (Extended)
- HazCollect (Legacy)
- FNMOC
- FTTPush
- Global Information Center System (GISC)
- IRIS/iNWS
- GMDSS
- SNOTEL
- Hydrometeorological Automated Data System (HADS)
- HF-FAX
- SOCKET/CMHP
- NWS GIS Services
- NOS Chart Tile
- nowCOAST
- Weather.gov
- VLAB
- SPOT
- AOMC/EM7

Weather Dissemination Chain



NOAA Weather Radio

NWR broadcasts official Weather Service warnings, watches, forecasts and other hazard information 24 hours a day, 7 days a week, from the nearest NWS office.

Continued NWR Technology Upgrades

Implement Transformational Changes with a NWR focus based on WIMD results

- Update current “analog” audio connections.
- Weather Information Mass Dissemination (WIMD) stakeholder engagement results used to assess operational gaps, understand new and evolving user needs, and integrate advanced technologies
- Key Objectives: Sustainability, Partnerships, Multi-lingual Service, Geo-targeting, Alternate Technologies.



GIS: Then, Today, and Tomorrow

NWS GIS web presence before the Pro

- Consolidate NWS web based maps and services
- Create a consistent user experience
- Migrate NDFD Web Services to IDP
- Provide OGC Compliant Web Services

National Weather Service GIS - AWIPS Shapefile Database

This page contains links to some of the shapefiles that the NWS uses as base maps in the Advanced Weather Interactive Processing System (AWIPS). Many of these shapefiles are used by NWS partners and customers in their own operations.

If you are looking for weather data that are compatible with GIS software go to [this link](#) for access.



IS
web
ce
ay

THANK YOU!



Contact: michelle.m.mainelli@noaa.gov