

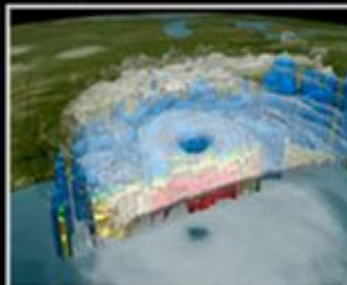
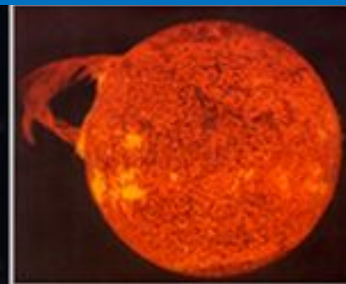
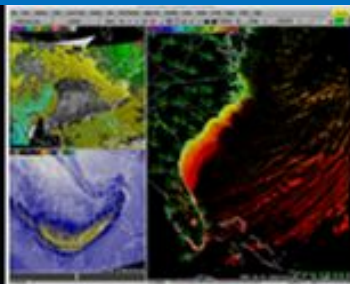


# NOAA

National  
Weather  
Service

# WELCOME! NWS Partners Meeting Albany, NY

Mary Erickson  
Deputy Director  
August 15, 2019



# Spring Partner's Meeting

Building a Weather-Ready Nation



## Partner Engagement

2019-2022

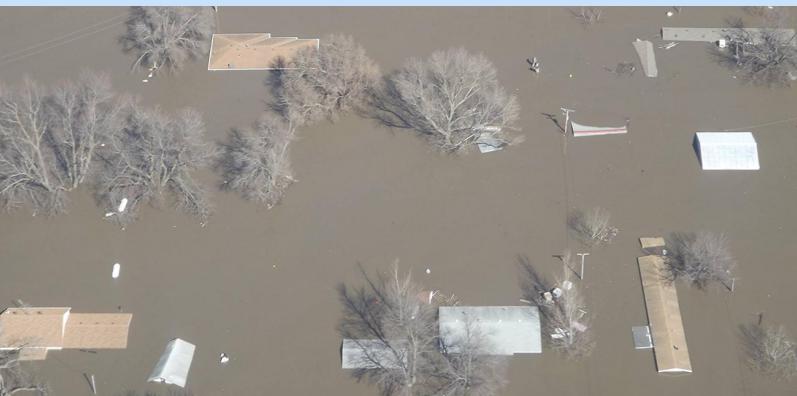
**STRATEGIC PLAN**





# Key Advances

**Water Model v2.0 6/19/19**  
**Hawaii, hourly, ensemble**  
**Flood Inundation Map Demo**  
**Day 3 excessive rainfall**



**Spring Outlook: Historic, widespread flooding to continue**

## NE Kansas Tornado

EF-4 on ground for 30+ miles.  
**NO FATALITIES.**

6 DAYS BEFORE	NWS Storm Prediction Center outlines Kansas City as having a risk of severe weather on 5/28	4 HOURS BEFORE	SPC issues a Tornado Watch for Kansas City, predicting "a couple intense tornadoes possible"
4 DAYS	NWS Storm Prediction Center upgrades Kansas City's risk to "enhanced"	1.5 HOURS BEFORE	NWS Topeka issues first Tornado Warning for Dodge County as cell begins to intensify
	SPC places Kansas City under a "hatched" area for "significant severe weather" potential	27 MINUTES BEFORE	NWS Kansas City issues a Tornado Warning for Linwood, calling it a "Particularly Dangerous Situation"
	SPC update features a "moderate risk" near Kansas City, emphasizing tornado potential	10 MINUTES BEFORE	NWS Kansas City issues a Tornado Emergency for Linwood and areas downwind

Linwood, KS

Lawrence, KS

WeatherNation @WeatherNation

**BREAKING: Yesterday's tornado near Linwood, Kansas has been rated an EF-4 with 170mph peak winds.**

This marks the 2nd violent tornado of 2019. [bit.ly/2W1mm5k](http://bit.ly/2W1mm5k)

nothing incredible happened last week': Forecasters credited with saving lives in outbreak with 434 tornadoes

The Washington Post



## HAZARD SIMPLIFICATION: PRODUCT CONSOLIDATION

**PREVIOUS PRODUCT**

Lake Effect Snow Watch  
 Blizzard Watch



**NOW BECOMES**

**WINTER STORM WATCH**



**WHICH MEANS**

Issued for the *potential* of a significant winter weather event (heavy snow, sleet, ice, or blowing snow)

Issued when snow, blowing snow, ice, or sleet is expected

Lake Effect Snow Advisory

WINTER WEATHER ADVISORY



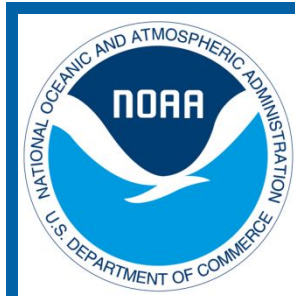
**Communication Challenges:** Message delivered = message received. Are effective actions known? understood? followed?

Providing aspirational leadership in science-based approach to **next generation of Wx, Water & Climate leaders**

**Innovations in observing:** Mesonet - driving improved analyses and decision making, Satellite Architecture - nimble & diverse

**Understanding decision making** - both through Engaging with users from outside the enterprise; Understanding our partners within





**R2O2R** - its about people, building culture of collaboration, clarity of needs expedites progress, active participation by R & O throughout TRL's, clear governance



# 2019 AMS Community Meeting



# Engage! Two Opportunities

- 
- Special Guests from the academic community
    - Employment opportunities across the Wx enterprise; tell stories
    - Future of observing, forecasting, modeling, research, technology
  
  - Drive the Agenda; Vote with your feet
    - Pull from last Partner's meeting, AMS Community meeting, core Wx Enterprise issues
  
  - Request: Open, Curious, Bold, Responsible
- 
- 
- 

**Have Fun!**







# Let's GO!

