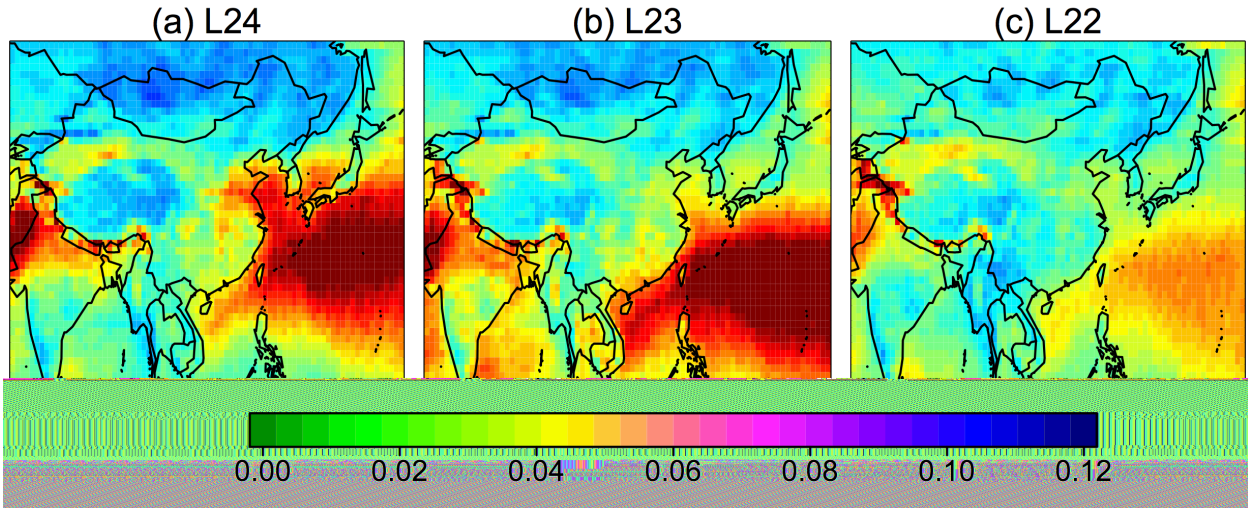


Retrieval sensitivity at different layers for L24

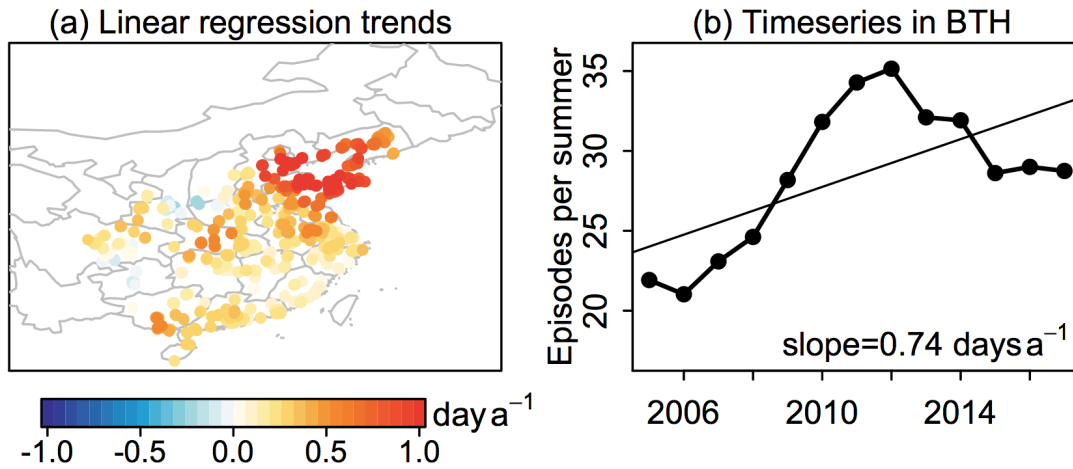


1

2 **Figure S1** The sensitivity of retrieved ozone at L22-L24 to the ozone change at L24, as denoted
 3 by the columns of AK (Hayashida et al., 2015).

4

2005-2017 trends in the frequency of ozone episodes



5

6 **Figure S2.** 2005-2017 trends in the number of surface ozone episodes (>82 ppb) per summer as
 7 inferred from daily OMI observations over China. Results are shown for the 2013-2017 CMEP
 8 network site locations where the point process model was trained. (a) Spatial distribution of the
 9 trend as expressed by linear regression on the number of ozone episodes per summer. (b)
 10 Timeseries of the number of ozone episodes per year when averaged over the Beijing-Tianjin-
 11 Hebei (BTH) region (Figure 1). The slope is shown inset.

12