



2016175434

Request For Designated Routes Up To 129,000 Pounds

Idaho Transportation Department

ITD 4886 (Rev. 03-14)
itd.idaho.gov

This form is designed to be completed electronically. If completing manually and additional space is needed, continue the narrative on the reverse side. Correspond the number of the section on the front with the continuation on the reverse.

Company Name <i>Handy Truck Line, Inc.</i>		Contact Person's Name <i>Clay Handy</i>	
Contact Phone Number <i>208-431-4135</i>	Fax Number <i>208-438-5223</i>	E-Mail Address <i>clay@handytruckline.com</i>	
Company Address <i>PO Box 300</i>		City <i>Blair</i>	State Zip Code <i>Id 83347</i>

State Highway Route(s) Requested

Vehicles operating on the requested routes cannot exceed the maximum overall length or off-track as shown on the Extra Length Map at <http://www.itd.idaho.gov/dmv/poe/documents/extra.pdf>. Submit a map with requested route(s) along with this completed form.

Highway Number	Beginning Milepost	Ending Milepost	Highway Number	Beginning Milepost	Ending Milepost
<i>34</i>	<i>* 57.757</i> <i>78.07</i>	<i>113.60</i>			

Local Route(s) Requested ** 57.757-78.07 PREVIOUSLY APPROVED*

Roadway Name(s)	Beginning Milepost	Ending Milepost	Jurisdiction Name	Date Request Sent

Reasons for Request - Continue on reverse side if necessary, corresponding the number of the section with the continuation.

- Justification
Cement Customers in Wyoming and central Idaho
- Associated Economic Benefits
Keep Idaho cement competitive in Wyoming
- Approximate Number of Trips Annually
Tin Cup Road - 60-80 Trucks Wks
- Commodities Being Transported
Cement in and fly ash out
- Anticipated Start Date to Use Requested Routes
ANY - Today is possible

Requestor's Printed Name <i>Clay Handy</i>	Requestor's Signature <i>Clay Handy</i>	Date <i>7-14-16</i>
---	--	------------------------

Requestor is required to submit a completed application to ITD (see below) and to city, county, and/or highway district officials where the requested state route (or state route segment) is contiguous to respective jurisdiction(s).

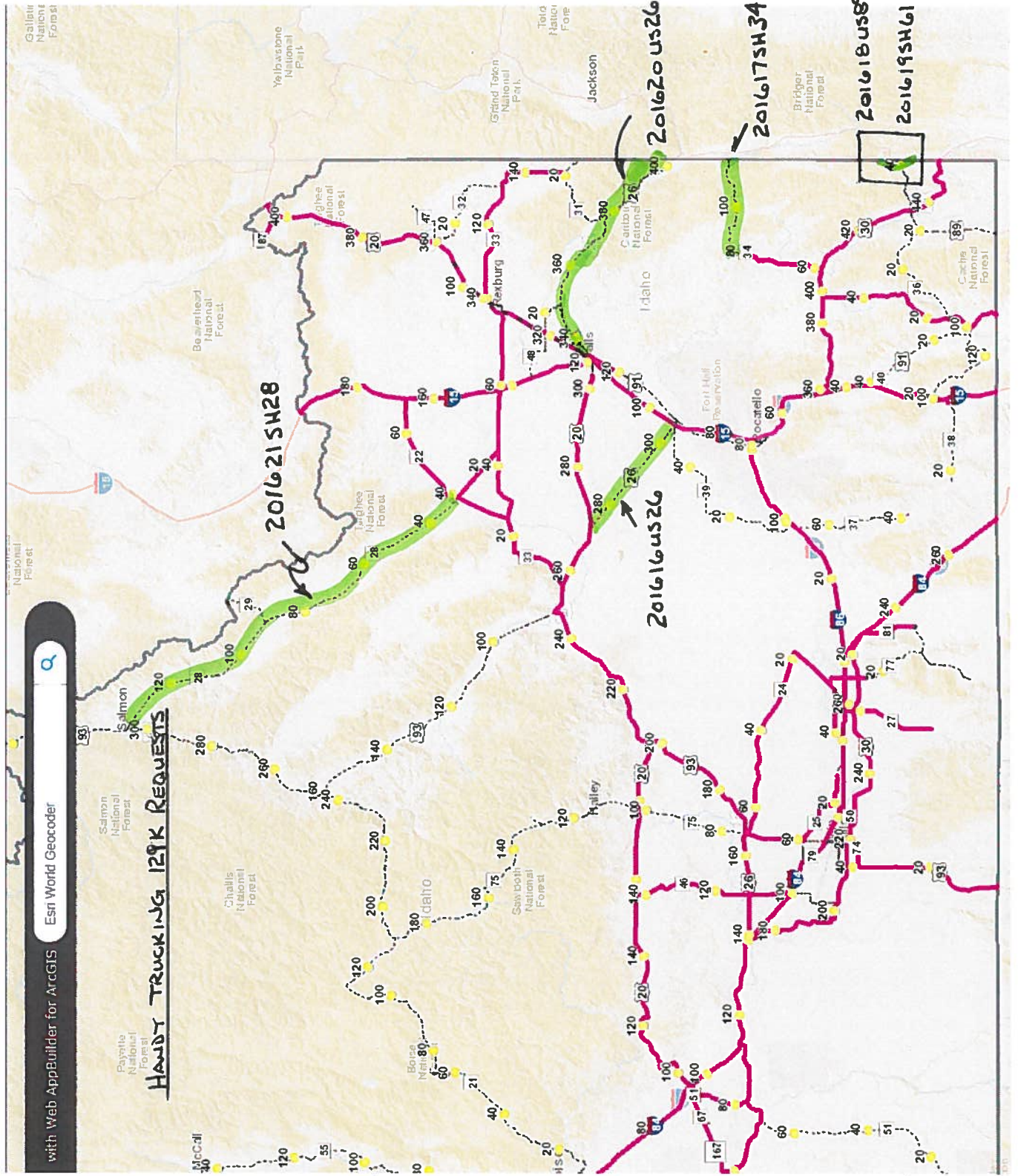
Idaho Transportation Department Attn: Chief Engineer PO Box 7129 Boise ID 83707-1129	or	Fax: (208) 334-8195 Email: officeofthechiefengineer@itd.idaho.gov
---	----	---

ITD Use Only

Hwy Review	D-1 <input type="checkbox"/>	D-2 <input type="checkbox"/>	D-3 <input type="checkbox"/>	D-4 <input type="checkbox"/>	D-5 <input type="checkbox"/>	D-6 <input type="checkbox"/>	Proceed <input type="checkbox"/>	Reject <input type="checkbox"/>	Date		
Bridge Review	Proceed <input type="checkbox"/>	Reject <input type="checkbox"/>	Date	Chief Engineer	Proceed <input type="checkbox"/>	Reject <input type="checkbox"/>	Date	Sub-committee	Proceed <input type="checkbox"/>	Reject <input type="checkbox"/>	Date

Cc: Local Highway Technical Assistance Council (LHTAC)

DS



with Web AppBuilder for ArcGIS Esri World Geocoder

HANDY TRUCKING 129K REQUESTS

201621SH28

201616US26

201617SH34

201618US89

201619SH61

Gallatin National Forest

Boise National Forest

Yellowstone National Park

Island Park National Park

Teton National Park

Jackson

201620US26

Bridger National Forest

Catch National Forest

Salmon National Forest

Challis National Forest

Idaho

Halley

Sawtooth National Forest

Idaho

Idaho

Idaho

Idaho

Idaho

Idaho

Idaho

Idaho

Idaho

Payette National Forest

Boise National Forest

Idaho

Idaho

Idaho

Idaho

Idaho

Idaho

Idaho

Idaho

Idaho

Idaho

Idaho

Idaho

Idaho

Idaho

McCull

Idaho

Idaho

Idaho

Idaho

Idaho

Idaho

Idaho

Idaho

Idaho

Idaho

Idaho

Idaho

Idaho

Idaho

Idaho

Idaho

Idaho

Idaho

Idaho

Idaho

Idaho

Idaho

Idaho

Idaho

Idaho

Idaho

Idaho

Idaho

Idaho

Idaho

Idaho

Idaho

Idaho

Idaho

Idaho

Idaho

Idaho

Idaho

Idaho

Idaho

Idaho

Idaho

Idaho

Idaho

Idaho

Idaho

Idaho