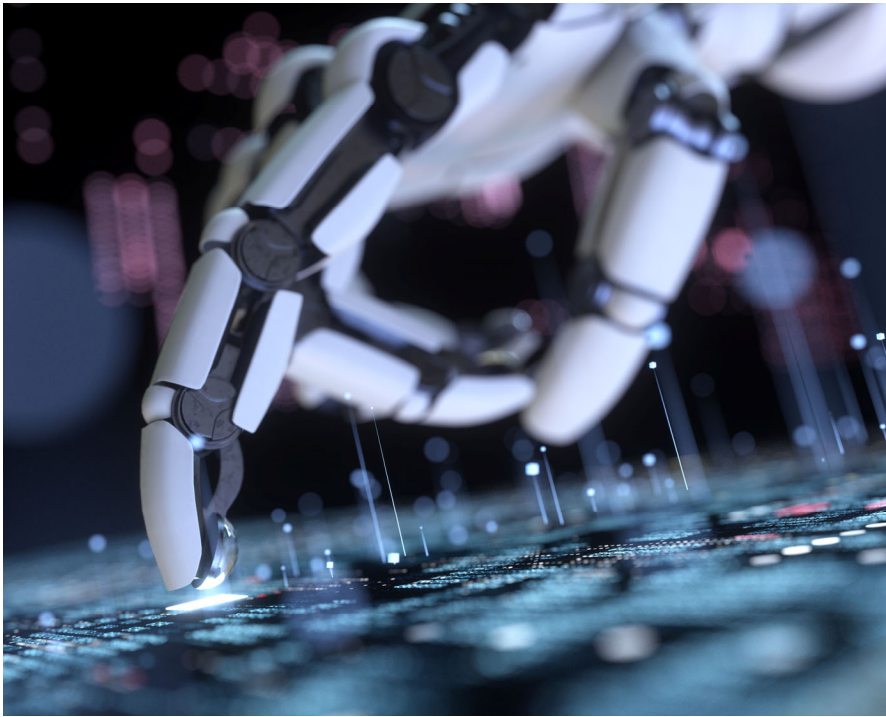


The background features a dark, textured surface with a network of white nodes and lines. A horizontal band of colorful, pixelated data points in shades of red, blue, and grey is visible on the left side. The overall aesthetic is futuristic and data-driven.

AI PRESENTATION

AGENDA



INTRODUCTION to AI

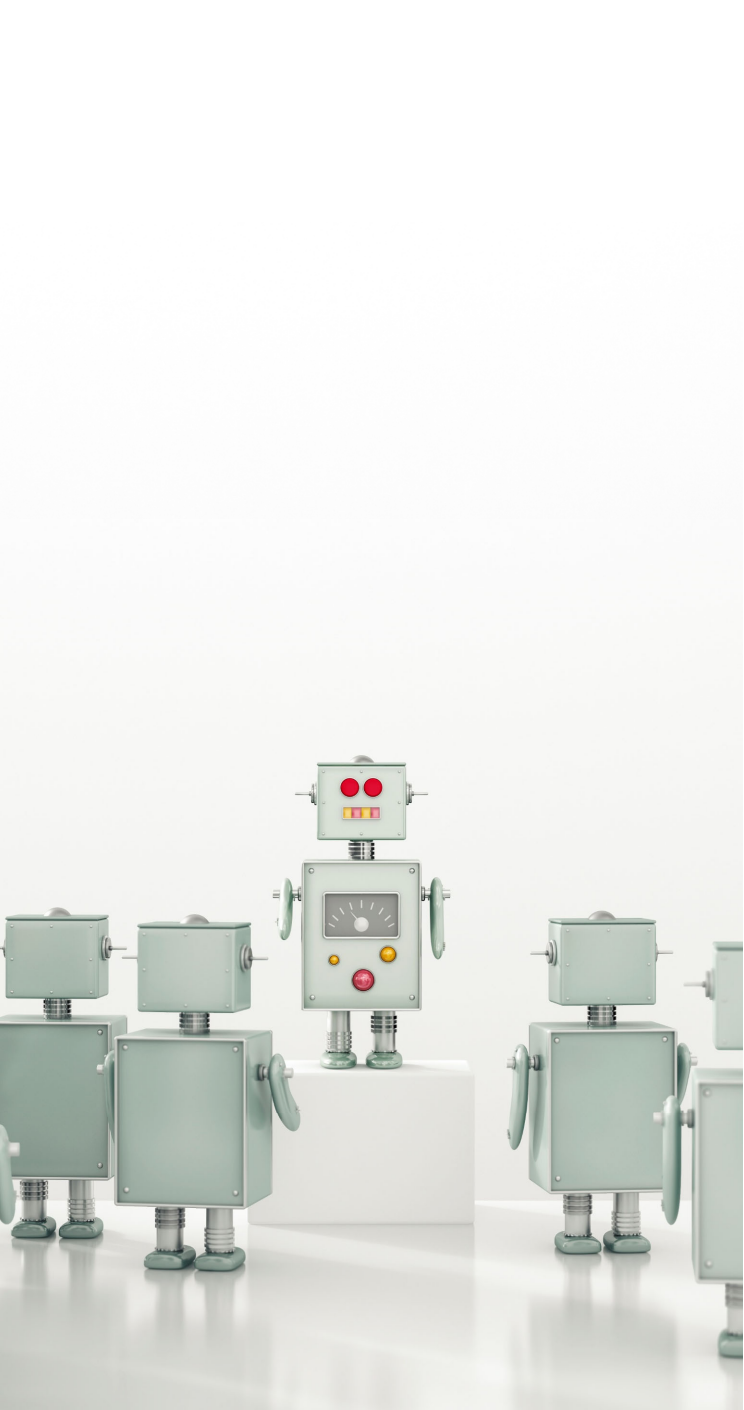
AI in transportation

Future of AI in transportation

ORACLE

What is Generative AI?



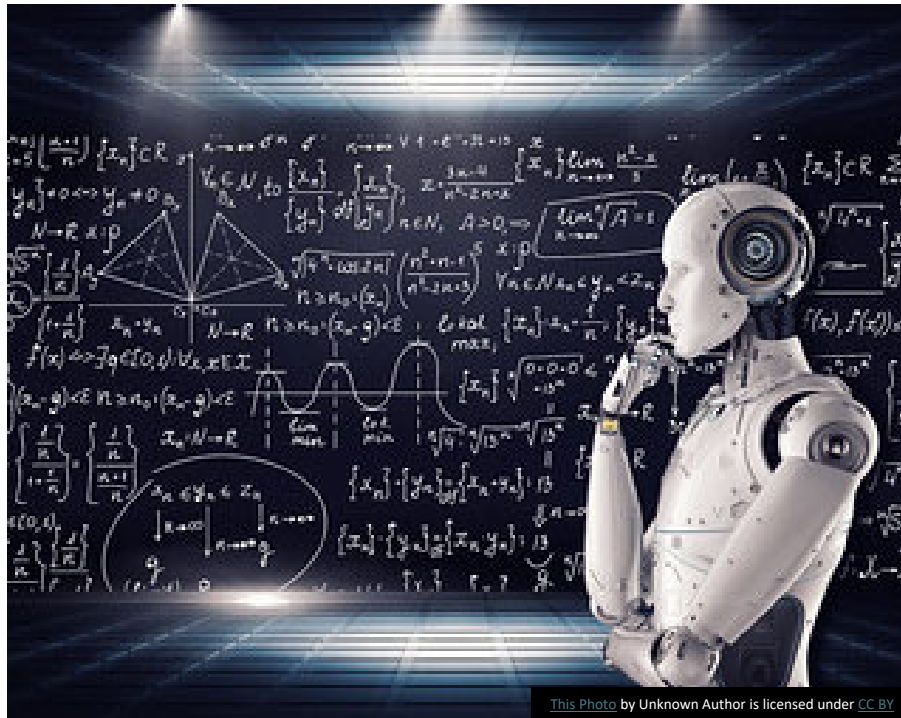


HISTORY OF AI

- CONCEPT OF AI STARTED IN THE 1950S BY ALAN TURING
- IN THE 1960S AND 70S, AI WAS MAINLY FOCUSED ON PROBLEM SOLVING AND SYMBOLIC METHODS
- 1980S RISE OF MACHINE LEARNING WITH ALGORITHMS, THE START OF DECISION MAKING
- 1990S AND 2000S ADVANCE MACHINE LEARNING TECHNIQUES AND DEEP LEARNING
- TODAY- CAN BE PART OF EVERYDAY LIFE, COMPUTERS, PHONES, AND ETC.



GENERATIVE AI AT WORK



This Photo by Unknown Author is licensed under [CC BY](#)

Automate up to 29.5% of work hours in the US economy by 2023 (Mckinsey)

Up to 92% of programmers are using AI tools (Github)

57% of knowledge workers are using at work monthly, and 40% once a week (Flexos)

By 2025, 50% of Software Engineering Leader roles will explicitly require oversight of Generative AI (Gartner)

2/3 of content creators are currently using Generative AI (Descript)

Generative AI can increase the productivity of skilled workers by up to 40% (MIT)

AI IN TRANSPORTATION INDUSTRY

WHERE ARE WE NOW?



Search

Unlimited prompts Monthly Upgrade for \$90/yr

Unlock the power of AI

How can we help you?

Recommendations How to's Advice Work Travel Poetry Writing help Coding help Cooking

Definitions and meanings Summaries Fun stuff Parenting Crypto Health tips

Chat-AI is a general knowledge Chatbot. Try asking me about anything.

Type a message...

Search 5:29 PM 9/24/2024

A screenshot of a web application interface for 'Chat-AI'. At the top, there is a search bar on the left and a navigation area on the right with 'Unlimited prompts' and 'Monthly' labels, and a red button that says 'Upgrade for \$90/yr'. The main content area has a dark background with the text 'Unlock the power of AI' and a large heading 'How can we help you?'. Below this are two rows of buttons for different categories: 'Recommendations', 'How to's', 'Advice', 'Work', 'Travel', 'Poetry', 'Writing help', 'Coding help', 'Cooking' in the first row; and 'Definitions and meanings', 'Summaries', 'Fun stuff', 'Parenting', 'Crypto', 'Health tips' in the second row. A small text line says 'Chat-AI is a general knowledge Chatbot. Try asking me about anything.' Below that is a large input field with the placeholder text 'Type a message...' and a red send button with a white arrow. At the bottom of the screenshot is a Windows taskbar with various application icons and a system tray showing the time '5:29 PM' and date '9/24/2024'.

QUICK EXAMPLE

HOW IS AI BEING USED TODAY IN TRANSPORTATION

- Route optimization
- Fleet management
- Predictive Maintenance
- Passenger Safety
- Ticketing and payment systems
- AI in Accessibility
- Customer Service
- Scheduling and Dispatch
- Traffic Management
- Data Analysis
- Environmental Sustainability
- AI in Emergency responses



THE FUTURE OF AI IN TRANSPORTATION



This Photo by Unknown Author is licensed under [CC BY-SA](#)

- Autonomous Vehicles
- Better Traffic Management
- Enhanced Safety
- Personalized Travel Experience



THANK YOU

Larry Standfield
Larry@Avot208.com