

Supplement of Biogeosciences, 12, 4651–4664, 2015  
<http://www.biogeosciences.net/12/4651/2015/>  
doi:10.5194/bg-12-4651-2015-supplement  
© Author(s) 2015. CC Attribution 3.0 License.



*Supplement of*

## **Hydrologic controls on DOC, As and Pb export from a polluted peatland – the importance of heavy rain events, antecedent moisture conditions and hydrological connectivity**

**T. Broder and H. Biester**

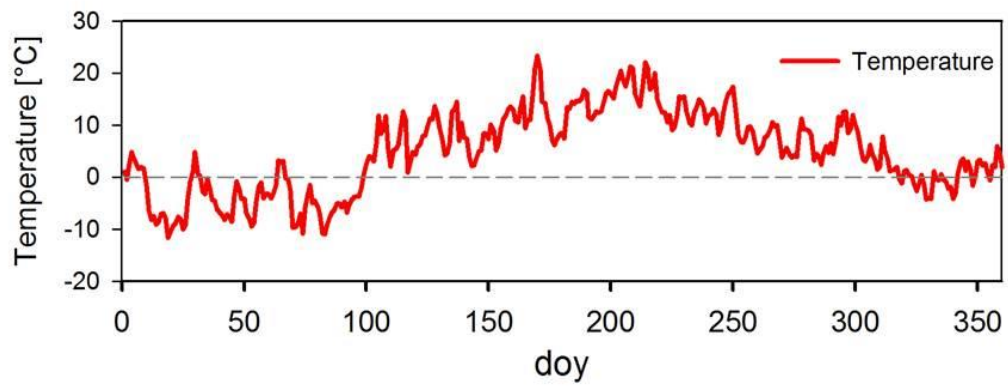
*Correspondence to:* T. Broder (t.broder@tu-bs.de)

The copyright of individual parts of the supplement might differ from the CC-BY 3.0 licence.

**Table S1:** As and Pb concentrations of the 30 cm short peat cores used for inventory calculations.

Concentrations were determined on sample aliquots of the upper (0-15 cm depth) and lower part (15 - 30 cm depth) of each core.

Core	As [mg kg <sup>-1</sup> ]		Pb [mg kg <sup>-1</sup> ]	
	0-15 cm	15-30 cm	0-15 cm	15-30 cm
1	48.74	23.90	1463.78	478.58
2	52.40	8.78	1030.13	45.40
3	70.22	17.77	2097.97	182.20
4	52.08	32.47	965.09	496.84
5	16.54	42.78	229.56	697.67
6	19.96	45.70	198.71	767.60
7	20.98	39.52	232.31	446.55
8	3.64	27.84	23.16	281.85
9	27.24	44.76	320.88	734.68
10	35.99	48.02	568.28	903.72
11	21.66	27.05	397.32	472.32
12	34.41	51.96	839.34	1285.92
13	23.84	53.40	280.36	736.18
14	3.61	25.51	16.57	240.64
15	5.70	28.90	47.14	427.62



**Figure S1:** Annual temperature record at the Odersprung bog in 2013. Gray dashed line highlights 0°C line.