

Congratulations, you and your iMac
were made for each other.

Welcome to your iMac.

www.apple.com/imac



Built-in FaceTime HD camera

Make video calls to the latest iPad, iPhone, iPod touch, or Mac.

Help Center





Thunderbolt high-speed I/O

Connect high-performance devices and displays.

Help Center





Magic Mouse gestures

Use gestures like these to control your Mac.

Help Center

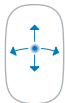




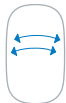
One-button click



Two-button click



Scroll



Two-finger swipe



Screen zoom



OS X Lion

www.apple.com/macosex



Mission Control

A bird's-eye view of what's running on your Mac.

Help Center

 [mission control](#)



Launchpad

Instant access to all your apps in one place.

Help Center

 [launchpad](#)



Full screen

Make apps full screen with a click.

Help Center

 [full screen](#)



Mac App Store

The best way to discover and download Mac apps.

Help Center

 [mac app store](#)



Mail

Group your messages by conversations.

Help Center

 [mail](#)



iPhoto

Organize, edit, and share your photos.

iPhoto Help

 [photos](#)



iMovie

Turn home videos into home blockbusters.

iMovie Help

 [movie](#)



GarageBand

Create great-sounding songs with ease.

GarageBand Help

 [record](#)

Contents

Chapter 1: Ready, Set Up, Go

- 9 What's in the Box
- 10 Setting Up Your iMac
- 16 Putting Your iMac to Sleep or Shutting It Down

Chapter 2: Life with Your iMac

- 20 Basic Features of Your iMac
- 22 Ports on Your iMac
- 24 Other Components of Your iMac
- 26 Features of the Apple Wireless Keyboard and Magic Mouse
- 28 Using the Apple Wireless Keyboard
- 30 Using the Apple Magic Mouse
- 32 Using the Apple Remote
- 34 Getting Answers

Chapter 3: Boost Your Memory

- 39 Installing Memory
- 44 Making Sure Your iMac Recognizes the New Memory

Chapter 4: Problem, Meet Solution

- 47 An Ounce of Prevention
- 47 Problems That Prevent You from Using Your iMac
- 50 Repairing, Restoring, or Reinstalling Mac OS X Software
- 55 Checking for a Hardware Problem
- 56 Replacing the Batteries
- 58 Problems with Your Internet Connection
- 61 Problems with Wireless Communication
- 62 Keeping Your Software Up to Date
- 62 Learning More, Service, and Support
- 64 Locating Your Product Serial Number

Chapter 5: Last, but Not Least

- 66 Important Safety Information
- 70 Important Handling Information
- 71 Cleaning Your iMac
- 72 Understanding Ergonomics
- 74 Apple and the Environment

Looking for Something?

- 82 Index

1

Ready, Set Up, Go

www.apple.com/imac

[Help Center](#)  [Migration Assistant](#)

Your iMac is designed so that you can easily set it up and start using it right away. If you've never used an iMac or are new to Mac computers, read this chapter for instructions about getting started.

Important: Read all the setup instructions in this chapter and the safety information starting on page 66 before you plug your iMac into a power outlet.

If you are an experienced user, you may already know enough to get started. Make sure you look over the information in Chapter 2, "Life with Your iMac" on page 19 to find out about the new features of your iMac.

Answers to many questions can be found on your iMac in Help Center. For information about Help Center, see "Getting Answers" on page 34.

Remove any protective film from the outside of your iMac before you set it up.

What's in the Box

Your iMac comes with an Apple Wireless Keyboard, a wireless Apple Magic Mouse, and an AC power cord. If you ordered an Apple Remote, it's also in the box.



Apple Wireless Keyboard



Apple Magic Mouse

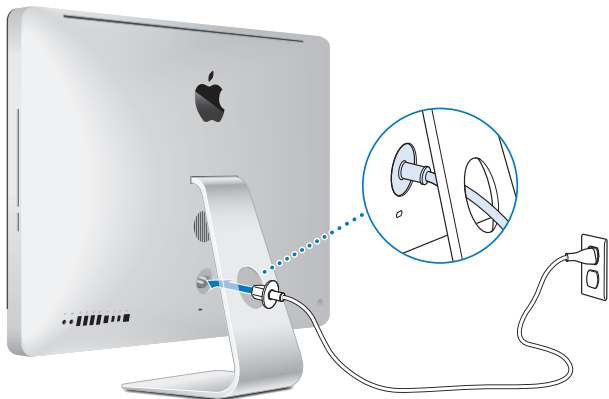


AC power cord

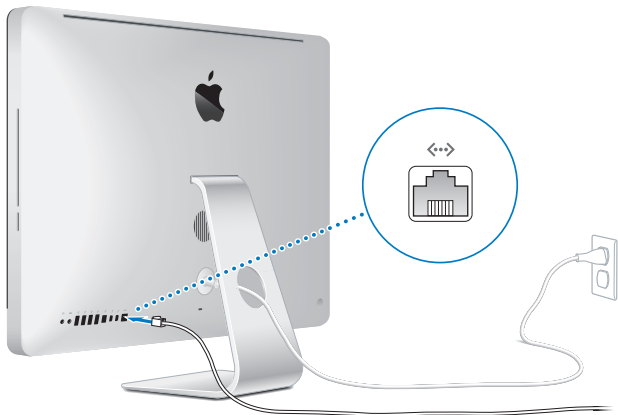
Setting Up Your iMac

Follow these steps to set up your iMac. Wait until Step 4 to turn on your iMac.

Step 1: Pass the power cord through the hole in the stand, plug it into the power port on the back of your iMac, and then plug the cord into a power outlet.



Step 2: To access the Internet or a network, connect one end of an Ethernet cable to the Ethernet port on your iMac. Connect the other end to a cable modem, a DSL modem, or a network.



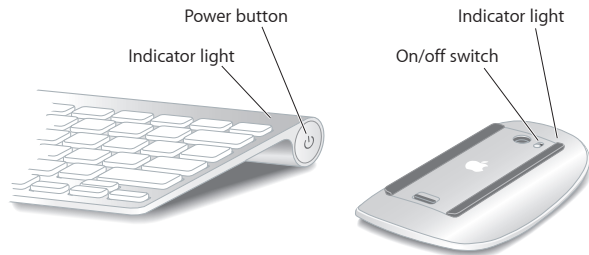
Your iMac comes with 802.11n Wi-Fi technology for wireless networking. For information about setting up a wireless connection, choose Help from the menu bar and search for “wi-fi.”

To use a dial-up connection, you need an external USB modem. Plug the modem into a USB port on your iMac, and then use a phone cord to connect the modem to a phone jack.

Step 3: Turn on your wireless keyboard and mouse.

Press the power button on the right side of your Apple Wireless Keyboard and slide the switch on the bottom of your Apple Magic Mouse to turn them on.

Your wireless keyboard and mouse come with AA batteries installed, and they're already paired with your iMac. Pairing allows them to communicate wirelessly with your iMac.



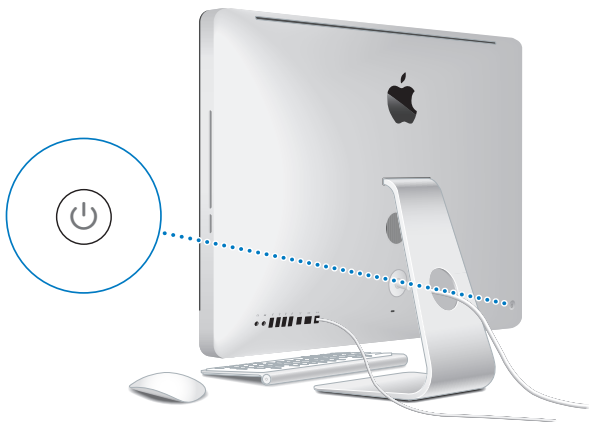
When you first turn on your keyboard or mouse, the indicator light glows steadily for 5 seconds, indicating the batteries are good. If your keyboard or mouse doesn't turn on, make sure batteries are installed properly (see "Replacing the Batteries" on page 56).

The indicator light blinks until you turn on your iMac and a connection is established.

Note: If you purchased a USB keyboard or a USB mouse, connect the cable to a USB port (⌏) on the back of your iMac.

Step 4: Press the power button (⏻) on the back to turn on your iMac.

You hear a tone when you turn on your iMac. Click your mouse to establish a connection with your iMac.



Important: If your keyboard and mouse aren't paired with your iMac, follow the onscreen instructions to pair them. You may have to click the mouse once to establish a connection. For more information about pairing, see "Pairing Your Apple Wireless Keyboard with Your iMac" on page 29.

Step 5: Configure your iMac.

The first time you turn on your iMac, Setup Assistant starts. Setup Assistant helps you specify your Wi-Fi network, set up a user account, and transfer information from another Mac or PC. You can also transfer information from a Time Machine backup or other disk.

If you're migrating from another Mac, you might have to update software if the other Mac doesn't have Mac OS X version 10.5.3 or later installed. To migrate from a PC, download Migration Assistant from www.apple.com/migrate-to-mac and install it on the PC you want to migrate from.

After you start Setup Assistant on your iMac, you can leave it midprocess without quitting, move to the other computer if you need to update its software, and then return to your iMac to complete the setup.

Note: If you don't use Setup Assistant to transfer information when you first start up your iMac, you can do it later using Migration Assistant. Open Migration Assistant in the Utilities folder in Launchpad. For help using Migration Assistant, open Help Center and search for "Migration Assistant."

To set up your iMac:

- 1 In Setup Assistant, follow the onscreen instructions until you get to the "Transfer Information to This Mac" screen.
- 2 Do a basic setup, a setup with migration, or transfer information from a Time Machine backup or other disk:
 - *To do a basic setup*, select "Don't transfer now" and click Continue. Follow the remaining prompts to select your wired or wireless network, set up an account, and exit Setup Assistant.

- *To do a setup with migration*, select “From another Mac or PC” and click Continue. Follow the onscreen instructions to select the Mac or PC you want to migrate from. Your Mac or PC must be on the same wired or wireless network. Follow the onscreen instructions for migrating.
- *To transfer information from a Time Machine backup or another disk*, select “From a Time Machine backup or other disk” and click Continue. Select the backup or the other disk that you want to migrate from. Follow the onscreen instructions.

If you don't intend to keep or use your other computer, it's best to deauthorize it from playing music, videos, or audiobooks that you've purchased from the iTunes Store. Deauthorizing a computer prevents any songs, videos, or audiobooks you've purchased from being played by someone else, and frees up another authorization for use. For information about deauthorizing, choose iTunes Help from the Help menu in iTunes.

Step 6: Customize your desktop and set your preferences.

You can quickly make the desktop look the way you want using System Preferences, your command center for most settings on your iMac. Choose Apple (🍏) > System Preferences from the menu bar, or click the System Preferences icon in the Dock.

Important: You can set an option to reset your password in Users & Groups preferences, in case you forget your login password. For help with System Preferences, open Help Center and search for “system preferences” or for the specific preference you want help for.

Putting Your iMac to Sleep or Shutting It Down

When you finish working with your iMac, you can put it to sleep or shut it down.

Putting Your iMac to Sleep

If you'll be away from your iMac for less than a few days, put it to sleep. When your iMac is in sleep, its screen is dark. You can quickly wake your iMac and bypass the startup process.

To put your iMac to sleep, do one of the following:

- Choose Apple (🍏) > Sleep from the menu bar.
- Press the power button (⏻) on the back of your iMac.
- Choose Apple (🍏) > System Preferences, click Energy Saver, and set a sleep timer.
- Hold down the Play/Pause button (⏮) on the optional Apple Remote for 3 seconds.

To wake your iMac from sleep, do one of the following:

- Press any key on the keyboard.
- Click the mouse.
- Press the power button (⏻) on the back of your iMac.
- Press any button on the optional Apple Remote.

When your iMac wakes from sleep, your applications, documents, and computer settings are exactly as you left them.

Shutting Down Your iMac

If you won't be using your iMac for more than a few days, shut it down. Choose Apple () > Shut Down. To turn your iMac on again, press the power button (⏻).

NOTICE: Shut down your iMac before moving it. Moving your iMac while the hard disk is spinning can damage the hard disk, causing loss of data or an inability to start up from the hard disk.

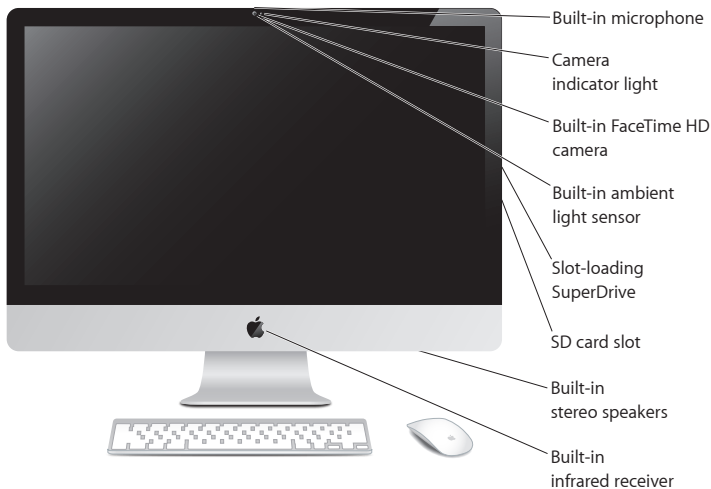
2

Life with Your iMac

www.apple.com/macosex

[Help Center](#)  [Mac OS X](#)

Basic Features of Your iMac



Built-in microphone

Capture sounds on your iMac, or talk with friends live over the Internet using the included iChat application.

Built-in FaceTime HD camera and camera indicator light

Use the FaceTime application to make video calls to other FaceTime users (on any iPhone 4, iPad 2, new iPod touch, or Mac with FaceTime), take pictures with Photo Booth, or capture video with iMovie. The indicator light glows when the FaceTime HD camera is operating.

Built-in ambient light sensor

Automatically adjusts the brightness of your display, based on ambient light.

Slot-loading SuperDrive

The slot-loading SuperDrive reads and writes standard-size CDs and DVDs.

SD card slot

Easily transfer photos, videos, and data to and from your iMac with an SD card.

Built-in stereo speakers

Listen to music, movies, games, and other multimedia files.

Built-in infrared (IR) receiver

Use an Apple Remote (available separately) with the IR receiver to control Keynote on your iMac from up to 30 feet (9.1 meters) away.

Ports on Your iMac

↔ Ethernet port
(10/100/1000
Base-T)

⚡ Thunderbolt
ports (1 or 2)

USB 2.0 ports (4)

🔊 Audio in/optical
digital audio
in port

🎧 Headphone out/
optical digital
audio out port

🔗 FireWire 800 port



**Ethernet port (10/100/1000Base-T)**

Connect to a high-speed 10/100/1000Base-T Ethernet network, connect a DSL or cable modem, or connect to another computer and transfer files. The Ethernet port automatically detects other Ethernet devices.

**One or two Thunderbolt ports (high-speed data, video, and audio)**

Connect Thunderbolt-compatible devices for high-speed data transfer, or connect an external display that uses Mini DisplayPort. You can purchase adapters to connect displays that use DVI, HDMI, or VGA. The 21.5-inch iMac has one Thunderbolt port and the 27-inch iMac has two.

**Four high-speed USB (Universal Serial Bus) 2.0 ports**

Connect an iPod, iPhone, iPad, mouse, keyboard, printer, disk drive, digital camera, joystick, external USB modem, and more. You can also connect USB 1.1 devices.

**Audio in/optical digital audio in port**

Connect an external powered microphone or digital audio equipment. This port is also a S/PDIF stereo 3.5 mm mini phone jack.

**Headphone out/optical digital audio out port**

Connect headphones, external powered speakers, or digital audio equipment. This port is also a S/PDIF stereo 3.5 mm mini phone jack.

**FireWire 800 port**

Connect external devices, such as digital video cameras and storage devices. The port provides up to 7 watts of power.

Power port

Connect the power cord to your iMac.

Security slot

Attach a lock and cable to discourage theft (available separately).

**Power button**

Press to turn on your iMac or put it to sleep. Hold down to restart your iMac during troubleshooting.

Memory access

Install additional memory. Your iMac comes with at least 4 GB of memory installed as two 2 GB memory modules.

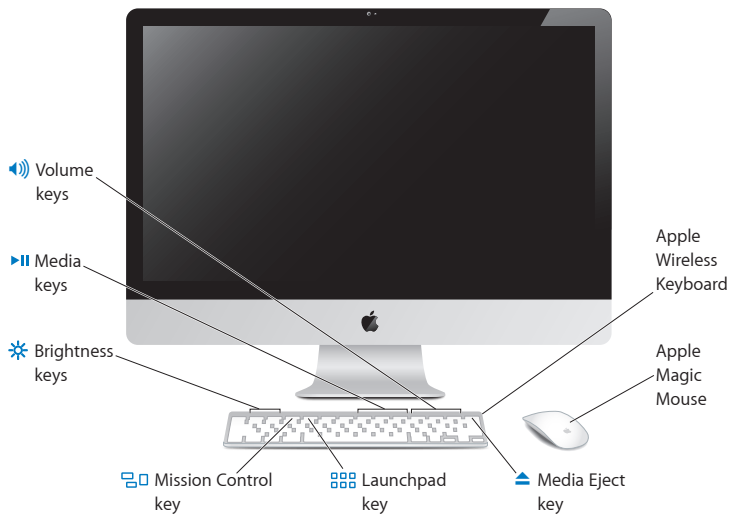
**802.11n Wi-Fi (inside)**

Connect to a wireless network using built-in 802.11n Wi-Fi technology.

**Bluetooth® wireless technology (inside)**

Connect wireless devices, such as the Apple Wireless Keyboard and Apple Magic Mouse, Bluetooth mobile phones, PDAs, and printers.

Features of the Apple Wireless Keyboard and Magic Mouse



Apple Magic Mouse

Features a laser tracking engine, Bluetooth wireless technology, and a seamless top-shell that uses Multi-Touch technology to support multiple buttons, 360° scrolling, screen zoom, and swipe control of your iMac. Use Mouse preferences to adjust tracking, clicking, and scrolling speed, or to add secondary button support (see page 31).

Apple Wireless Keyboard

Combines wireless freedom with integrated function keys that work with your applications.



Media Eject key

Hold down this key to eject a disc. You can also eject a disk by dragging its desktop icon to the Trash.



Brightness keys (F1, F2)

Increase (☀) or decrease (☾) the brightness of the screen.



Mission Control key (F3)

Open Mission Control for a comprehensive view of what's running on your iMac, including Dashboard, all your spaces, and all open windows.



Launchpad key (F4)

Open Launchpad to instantly see all of the applications on your iMac. Click an application to open it.



Media keys (F7, F8, F9)

Rewind (◀), play or pause (⏮), or fast-forward (▶) a song, movie, or slideshow.



Volume keys (F10, F11, F12)

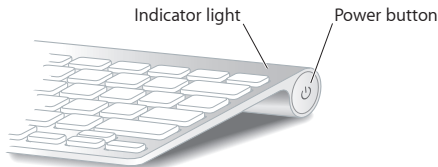
Mute (⏻), decrease (🔊), or increase (🔊) the volume of sound coming from the speakers or headphone port on your iMac.

Using the Apple Wireless Keyboard

Your Apple Wireless Keyboard, which comes with two AA batteries installed, is already paired with your iMac. Pairing means your keyboard and iMac are connected wirelessly and can communicate with each other.

About the Indicator Light

The LED on your Apple Wireless Keyboard functions as a battery indicator and a status light. When you first turn on your keyboard, the light glows steadily for 5 seconds, indicating the batteries are good, and then turns off. If you press the power button (⏻) on your wireless keyboard and the indicator light doesn't glow, you may need to replace the batteries. See "Replacing the Batteries" on page 56.



Pairing Your Apple Wireless Keyboard with Your iMac

If your Apple Wireless Keyboard isn't paired with your iMac, the indicator light begins to blink, indicating your keyboard is in discovery mode and ready to pair with your iMac.

To pair your wireless keyboard:

- 1 Press the power button (⏻) to turn on your wireless keyboard.
- 2 Choose Apple (🍏) > System Preferences, and then click Keyboard.
- 3 Click “Set Up Bluetooth Keyboard...” in the lower-right corner.
- 4 Select your wireless keyboard, and then follow the onscreen instructions.

If you don't pair your keyboard with your iMac within 3 minutes, the indicator light and keyboard turn off to preserve battery life. Press the power button (⏻) to turn your keyboard on again, allowing you to pair it with your iMac. Once you successfully pair your keyboard with your iMac, the indicator light glows steadily for 3 seconds, and then turns off.

Using Your Apple Wireless Keyboard

Customize your Apple Wireless Keyboard using Keyboard preferences. You can change the modifier keys, assign keyboard shortcuts to menu commands in a Mac OS X application or in the Finder, and more.

To customize your keyboard:

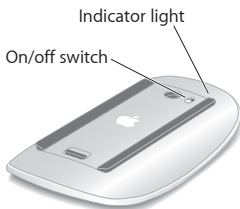
- 1 Choose Apple (🍏) > System Preferences.
- 2 Click Keyboard, and then click Keyboard or Keyboard Shortcuts.

Using the Apple Magic Mouse

Your Apple Magic Mouse, which comes with two AA batteries installed, is already paired with your iMac. Pairing means your Apple Magic Mouse and iMac are connected wirelessly and can communicate with each other.

About the Indicator Light

When you first turn on your Apple Magic Mouse, the light glows steadily for 5 seconds, indicating the batteries are good. If you turn your mouse on and the indicator light doesn't glow, you may need to replace the batteries. See “Replacing the Batteries” on page 56.



Pairing Your Apple Magic Mouse with Your iMac

If your Apple Magic Mouse isn't paired with your iMac, the indicator light begins to blink, indicating your mouse is in discovery mode and ready to pair with your iMac.

To pair your mouse:

- 1 Slide the on/off switch on the bottom of your mouse to turn it on.
- 2 Choose Apple (🍏) > System Preferences, and then click Mouse.
- 3 Click "Set Up Bluetooth Mouse..." in the lower-right corner.
- 4 Select your wireless mouse, and then follow the onscreen instructions.

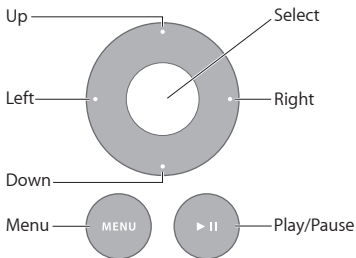
If you don't pair your mouse with your iMac within 3 minutes, the indicator light and mouse turn off to preserve battery life. Slide the on/off switch to turn your mouse on again, allowing you to pair it with your iMac. Once you successfully pair your mouse with your iMac, the indicator light glows steadily.

Using Your Apple Magic Mouse

To learn about the Multi-Touch gestures you can use with your Apple Magic Mouse or to change the way it works, use Mouse preferences. Choose Apple (🍏) > System Preferences, and then click Mouse.

Using the Apple Remote

If your iMac came with an Apple Remote, you can use it with Apple products that have a built-in infrared (IR) receiver. Control and play a DVD movie or music from your iTunes library, watch photo slideshows and movie trailers, and more.



To use your remote:

- 1 Press Play/Pause to play or pause a song, slideshow, or movie.
- 2 Press Right or Left to skip to the next or previous song in your iTunes library, or the next or previous chapter on a DVD.
- 3 Hold down Right or Left to fast-forward or rewind a song or movie.
- 4 Press Up or Down to adjust the volume.

Pairing Your Apple Remote

Pair your Apple Remote with your iMac or another Apple product. After you pair the iMac or Apple product, it's controlled by only the paired remote.

To pair your remote:

- 1 Move within 3 to 4 inches (8 to 10 cm) of your iMac or Apple product.
- 2 Point the remote at the IR receiver on the front of your iMac or Apple product.
- 3 Hold down Right and Menu for 5 seconds.

When you've paired your remote, a chainlink symbol appears onscreen.

To unpair your remote on an iMac:

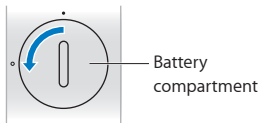
- 1 Choose Apple (🍏) > System Preferences from the menu bar.
- 2 Click Security, and then click Unpair.

For Apple TV or other Apple products, hold down Menu and Left to unpair.

Replacing the Battery

To replace the battery:

- 1 Use a coin to remove the battery cover.



- 2 Insert a CR2032 battery, positive (+) side up.
- 3 Replace the cover and use a coin to tighten it.

Getting Answers

Much more information about using your iMac is available in Help Center, and on the Internet at www.apple.com/support/imac.

To get help from Help Center:

- 1 Click the Finder icon in the Dock (the bar of icons along the edge of the screen).
- 2 Click the Help menu in the menu bar and do one of the following:
 - Type a question or term in the Search field, and then choose a topic from the results list or choose Show All Help Topics to see all topics.
 - Choose Help Center to open the Help Center window, where you can browse or search topics.

More Information

For more information about using your iMac, see the following:

To learn about	See
Installing memory	"Boost Your Memory" on page 37.
Troubleshooting your iMac if you have a problem	"Problem, Meet Solution" on page 45.
Finding service and support for your iMac	"Learning More, Service, and Support" on page 62. Or see the Apple Support website at www.apple.com/support .
Using Mac OS X	The Mac OS X website at www.apple.com/macosx . Or search for "Mac OS X" in Help Center.
Moving from a PC to a Mac	"Why you'll love a Mac" at www.apple.com/getamac/whymac .

To learn about	See
Using iLife applications	The iLife website at www.apple.com/ilife . Or open an iLife application, open Help for the application, and then type a question in the search field.
Changing System Preferences	System Preferences by choosing Apple () > System Preferences. Or search for “system preferences” in Help Center.
Using the FaceTime HD camera	Help Center and search for “FaceTime.”
Using your keyboard or mouse	System Preferences and choose Keyboard or Mouse. Or open Help Center and search for “keyboard” or “mouse.”
Using Wi-Fi	The AirPort Support page at www.apple.com/support/airport . Or open Help Center and search for “wi-fi.”
Using Bluetooth wireless technology	Help Center and search for “Bluetooth.” Or go to the Bluetooth Support page at www.apple.com/support/bluetooth .
Connecting a printer	Help Center and search for “printing.”
FireWire and USB connections	Help Center and search for “FireWire” or “USB.”
Connecting to the Internet	Help Center and search for “Internet.”
External displays	Help Center and search for “display port” or “target display mode.”
Using a Thunderbolt port	Help Center and search for “Thunderbolt.”
Apple Remote	Help Center and search for “remote.”
Using the SuperDrive	Help Center and search for “optical drive.”
Specifications	The Specifications page at www.apple.com/support/specs for standard technical specifications. Or open System Information by choosing Apple () > About This Mac from the menu bar and then clicking More Info.

To learn about	See
Downloading Mac software updates	Software Updates by choosing Apple (🍏) > Software Update.
Finding and downloading Mac apps	Mac App Store by choosing Apple (🍏) > App Store. Or click the icon in the Dock.
Instructions, technical support, and Apple product manuals	The Apple Support website at www.apple.com/support .

3

Boost Your Memory

www.apple.com/store

[Help Center](#)  [RAM](#)

Your iMac comes with at least 4 gigabytes (GB) of Double Data Rate 3 (DDR3) Dynamic Random Access memory (DRAM) installed as two 2 GB memory modules. You can replace or install additional 2 GB or 4 GB memory modules for up to a maximum of 16 GB. Memory modules must meet the following specifications:

- Small Outline Dual Inline Memory Module (SO-DIMM) format
- 1333 MHz, PC3-10600, DDR3 compliant (also referred to as DDR3 1333)
- Unbuffered and unregistered

WARNING: Apple recommends that you have an Apple-certified technician install memory. See “AppleCare Service and Support” on page 63 for information about how to contact Apple for service. If you attempt to install memory and damage your equipment, that damage isn’t covered by the limited warranty on your iMac.

Installing Memory

Your iMac has four memory slots. Two are filled with at least a 2 GB memory module. You can install additional memory in the free slots or replace the memory in the filled slots with 2 GB or 4 GB memory modules, for up to 16 GB of memory.

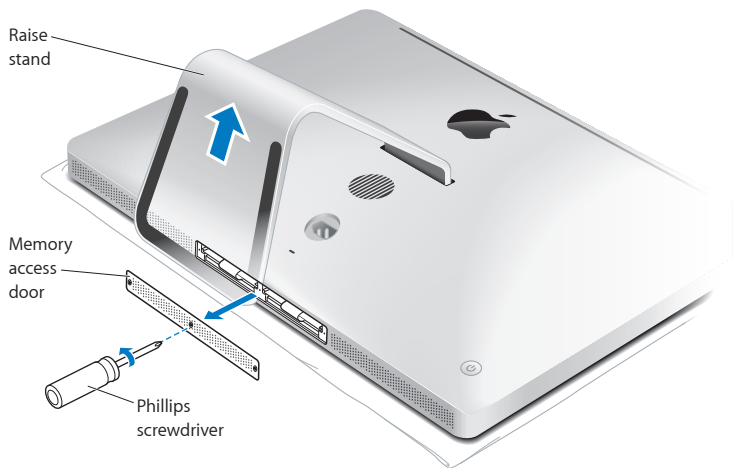
You can purchase additional Apple memory from an Apple Authorized Reseller, an Apple Retail Store, or the Apple Online Store at www.apple.com/store.

WARNING: Always shut down your iMac and remove the power cord before installing memory. Do not attempt to install memory while your iMac is plugged in.

To install memory:

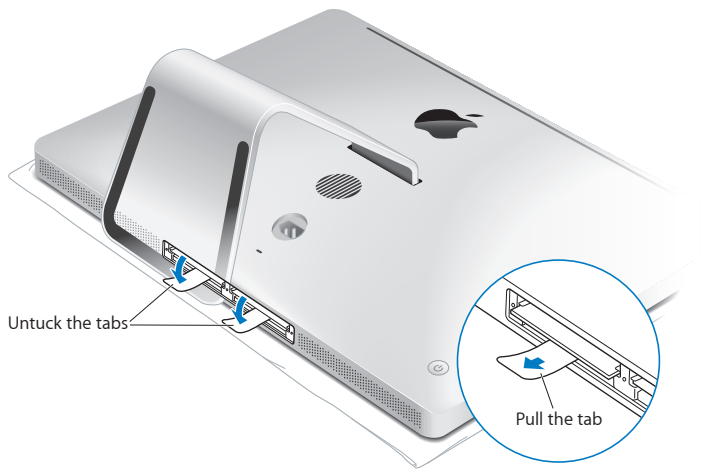
- 1 Turn off your iMac by choosing Apple (🍏) > Shut Down.
- 2 Disconnect all cables and the power cord from your iMac.
- 3 Place a soft, clean towel or cloth on your work surface. Hold the sides of your iMac and lay it down so that the screen rests on the surface and the bottom faces you.

- 4 Raise the stand and use a Phillips #2 screwdriver to loosen the three captive screws on the memory access door. Turn them counterclockwise.

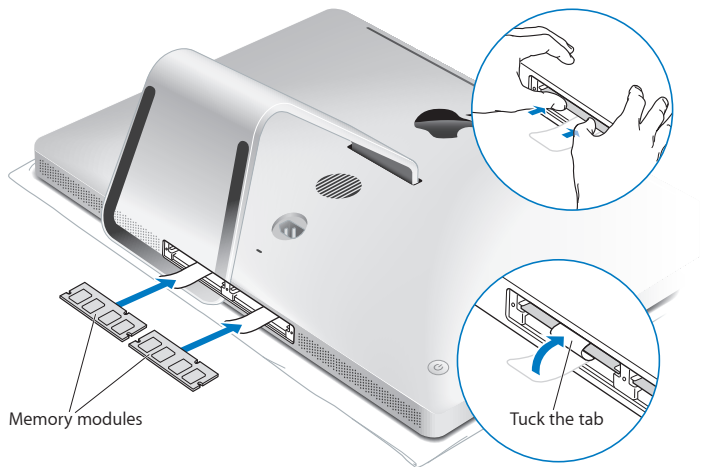


- 5 Remove the memory access door and set it aside.

- 6 Untuck the tabs in the memory compartment.
- 7 To replace memory modules, pull the tab to eject the installed memory module. Remove the memory modules you want to replace.

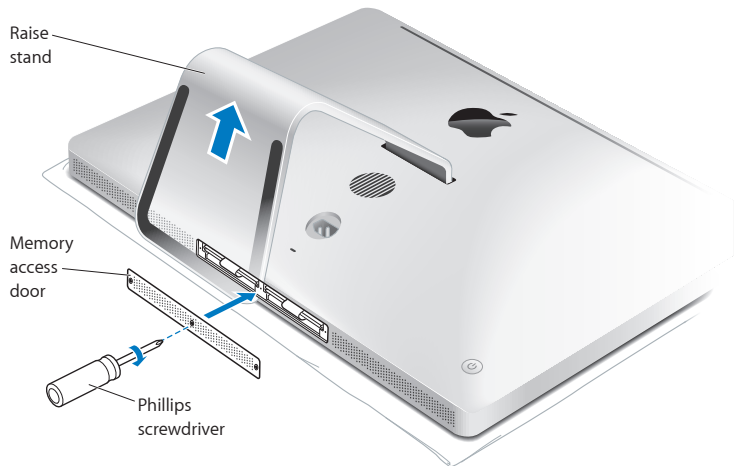


- 8 Insert the new memory modules in the slots with the notches facing right, as shown in the illustration.
 - If you install additional memory modules, insert them in the open slots.
 - If you replace the installed memory modules, insert a new memory module in each of the slots furthest from the display.
- 9 Press each memory module firmly and evenly into its slot. You'll hear a slight click when the memory module is seated correctly.
- 10 Tuck the tabs into the memory compartment.



- 11 Replace the memory access door and tighten the three captive screws with a Phillips #2 screwdriver.

WARNING: Remember to replace the memory access door after you install memory. Your iMac won't function properly without the memory access door.



- 12 Hold your iMac by its sides and return it to a standing position. Then reconnect the cables and power cord.
- 13 Press the power button (⏻) on the back of your iMac to turn it on.

Making Sure Your iMac Recognizes the New Memory

After installing memory, make sure your iMac recognizes the new memory.

To check the memory installed in your iMac:

- 1 Start up your iMac.
- 2 When you see the Mac OS X desktop, choose Apple (🍏) > About This Mac.
You'll see the total amount of memory installed in your iMac. For a detailed view of the amount of memory installed, open System Information by clicking More Info.

If the memory you installed doesn't meet specifications (see page 38), your iMac will sound three tones every five seconds. If this happens, shut down your iMac and check the installation instructions again to make sure that the memory is compatible with your iMac and that it's installed correctly. If you still have problems, remove the memory and consult the support information that came with the memory or contact the vendor who provided the memory.

4

Problem, Meet Solution

www.apple.com/support

Help Center  help

Occasionally you may have problems while working with your iMac. Read on for troubleshooting tips to try when you have a problem. You can also find more troubleshooting information in Help Center and on the iMac Support website at www.apple.com/support/imac.

If you experience a problem working with your iMac, there's usually a simple and quick solution. If you encounter a problem, try to make a note of what you did before the problem occurred. This can help you narrow down the possible causes of the problem and then find the answers you need. Things to note:

- The applications you were using when the problem occurred. Problems that occur only with a specific application may indicate that the application isn't compatible with the version of Mac OS X installed on your iMac.
- Any software that you recently installed.
- Any new hardware (such as additional memory or a peripheral) that you connected or installed.

WARNING: Do not attempt to open your iMac, except to install memory. If your iMac needs service, see “Learning More, Service, and Support” on page 62 for information about how to contact Apple or an Apple Authorized Service Provider for service. Your iMac doesn't have any user-serviceable parts, except the memory.

An Ounce of Prevention

If you have a problem with your computer or software, having kept up-to-date Time Machine backups ensures that your data won't be lost. If you make regular Time Machine backups, you can restore your software and all your data to exactly the way it was at the time of backup. Even serious issues are of less concern when you safeguard your information with Time Machine.

Problems That Prevent You from Using Your iMac

If your iMac won't respond or the pointer won't move

- Make sure your Apple Wireless Keyboard or Apple Magic Mouse are turned on and the batteries are charged. (See “Replacing the Batteries” on page 56.)
If you're using a USB keyboard or mouse, make sure they're connected. Unplug and then plug in the connectors and make sure they are secure.
- Try to force problem applications to quit. Hold down the Option and Command (⌘) keys and press the Esc key. If a dialog appears, select the application and click Force Quit. Then save your work in any open applications and restart your iMac to be sure the problem is entirely cleared up.
- If you're unable to force the application to quit, hold down the power button (⏻) on the back of your iMac for five seconds to shut down the computer. Unplug the power cord from your iMac. Then plug the power cord back in and press the power button (⏻) on your iMac to turn it on.

If the problem reoccurs when you use a particular application, check with the application's manufacturer to see if the application is compatible with your iMac.

For information about the software that came with your iMac, go to www.apple.com/downloads.

If the problem occurs frequently, try repairing your disk, restoring your software from a backup, or reinstalling your system software using the Mac OS X Utilities pane (see “Repairing, Restoring, or Reinstalling Mac OS X Software” on page 50).

If your iMac freezes during startup or you see a flashing question mark

- Wait a few seconds. If your iMac doesn't start up after a delay, shut down your iMac by pressing and holding the power button (⏻) for about 5 seconds, until it shuts down. Then hold down the Option key and press the power button (⏻) again to start up your iMac. Keep holding down the Option key until your iMac starts up, then click the arrow under the icon of the startup disk you want to use.

After your iMac starts up, open System Preferences and click Startup Disk. Select a local Mac OS X System folder.

- If the problem occurs frequently, you may need to reinstall your system software (see “Repairing, Restoring, or Reinstalling Mac OS X Software” on page 50).

If your iMac won't turn on or start up

- Make sure the power cord is plugged into your iMac and a functioning power outlet.
- Restart your computer while holding down the Command (⌘) and R keys, until the computer restarts. When the Mac OS X Utilities pane appears, select an option to repair your disk, restore your software, or reinstall Mac OS X and Apple applications. For more information, see “Repairing, Restoring, or Reinstalling Mac OS X Software” on page 50.
- Press the power button (⏻) and immediately hold down the Command (⌘), Option, P, and R keys until you hear the startup sound a second time. This resets the parameter RAM (PRAM).
- If you recently installed memory, and your iMac sounds tones every five seconds, make sure that the memory is correctly installed and that it is compatible with your iMac. Check whether removing the memory you installed allows your iMac to start up (see page 44).
- Unplug the power cord and wait at least 30 seconds. Plug the power cord in again and press the power button (⏻) to start up your iMac.
- If you still can't start up your iMac, see “Learning More, Service, and Support” on page 62 for information about contacting Apple for service.

If you have trouble inserting a disc

- Using a continuous motion, push the disc into the drive until your fingers touch the edge of your iMac.
- Use only a standard-size disc.

If you have trouble ejecting a disc

- Quit any applications that may be using the disc, and then press the Media Eject key (⏏) on your keyboard.
- Open a Finder window and click the eject icon next to the disc icon in the sidebar, or drag the disc icon from the desktop to the Trash.
- Log out from your user account by choosing Apple (🍏) > Log Out “User” (your account name appears in the menu), and then press the Media Eject key (⏏) on your keyboard.
- Restart your iMac while holding down the mouse button.

If you have trouble scrolling with your mouse

- If you have a mouse with a scroll ball and the scrolling feels rough or the scroll ball isn't scrolling up, down, or side-to-side, hold the mouse upside-down and roll the ball vigorously while cleaning.
- For more information, see “Cleaning Your Mouse” on page 72.

If your date and time settings get lost repeatedly

- You may need to have the internal backup battery replaced. For information about contacting Apple for service, see “Learning More, Service, and Support” on page 62.

Repairing, Restoring, or Reinstalling Mac OS X Software

If you have a problem with your Mac software or hardware, Mac OS X provides repair and restore utilities that may eliminate problems and can even restore your software to its original factory settings. You can access these utilities from the Mac OS X Utilities application, even if your computer isn't starting up correctly.



Use the Mac OS X Utilities application to:

- Restore your software and data from a Time Machine backup.
- Reinstall Mac OS X and Apple applications.
- Restore your computer to its factory settings by erasing its disk and reinstalling Mac OS X and your Apple applications.
- Repair your computer's disk using Disk Utility.

If your computer detects a problem, it opens the Mac OS X Utilities application automatically. You can also open the application manually by restarting your computer.

To open the Mac OS X Utilities application:

- Restart your computer while holding down the Command (⌘) and R keys.

Some utilities in the Mac OS X Utilities application require access to the Internet and the Mac App Store. You may need to make sure your computer is connected to the Internet by using your Ethernet or Wi-Fi network.

To connect by using a Wi-Fi network:

- 1 Choose a network from the Wi-Fi status menu in the upper-right corner of the screen.
- 2 If necessary, type the network password.

To join a closed network, choose Join Other Network. Enter the network's name and password.

Repairing a Disk with Disk Utility

If you have a problem with your computer, or if you start your computer and see the Mac OS X Utilities pane, you may need to repair your computer's disk.

- 1 Select Disk Utility in the Mac OS X Utilities pane and click Continue.
- 2 Select the disk or partition in the list on the left, and then click the First Aid tab.
- 3 Click Repair Disk.

If Disk Utility can't repair the disk, back up as much of your information as possible, and then follow the instructions in "Reinstalling Mac OS X and Apple Applications" on page 53.

For information about Disk Utility and its options, see Help Center, or open Disk Utility (in the Utilities folder in Launchpad) and choose Help > Disk Utility Help.

Restoring Information Using a Time Machine Backup

You can use the Restore utility to restore everything on your computer to its previous state if you have a Time Machine backup.

Use your Time Machine backup to restore information only to the computer that was the source of the backup. If you want to transfer information to a new computer, use Migration Assistant (in the Utilities folder in Launchpad).

- 1 If your backup is on a Time Capsule, make sure you're connected to an Ethernet or Wi-Fi network. (To connect to a Wi-Fi network, follow the instructions on page 52.)
- 2 In the Mac OS X Utilities pane, select Restore From Time Machine Backup and click Continue.
- 3 Select the disk that contains the Time Machine backup, and then follow the onscreen instructions.

Reinstalling Mac OS X and Apple Applications

Under some circumstances, you may need to reinstall Mac OS X and Apple applications. You can reinstall while keeping your files and user settings intact.

- 1 Make sure you're connected to the Internet by using an Ethernet or Wi-Fi network. (To connect to a Wi-Fi network, follow the instructions on page 52.)
- 2 In the Mac OS X Utilities pane, select Reinstall Mac OS X and click Continue.
- 3 In the pane where you're asked to select a disk, select your current Mac OS X disk (in most cases, it is the only one available).
- 4 To select or deselect optional software, click Customize.
- 5 Click Install.

You can install Mac OS X without erasing the disk, which saves your existing files and settings, or you can erase the disk first, which erases all your data and leaves the computer ready for you to reinstall Mac OS X and Apple applications.

After reinstalling Mac OS X, you can re-download the Apple applications that came with your iMac and other apps you purchased from the Mac App Store. You can restore your other data and applications from a Time Machine or other backup.

Important: Apple recommends that you back up the data on the disk before restoring software. Apple is not responsible for any lost data.

Restoring Your Computer to Its Factory Settings

When you restore your computer to its factory settings, everything on your computer (your user accounts, network settings, and all of your files and folders) is deleted. Before you restore, back up any files you want to keep by copying them to another disk.

Write down your network settings from Network preferences to make it easier to get connected again after reinstalling Mac OS X.

- 1 Make sure you're connected to the Internet by using an Ethernet or Wi-Fi network. (To connect to a Wi-Fi network, follow the instructions on page 52.)
- 2 In the Mac OS X Utilities pane, select Disk Utility and click Continue.
- 3 Select the disk in the list on the left, and then click the Erase tab.
- 4 Select Mac OS Extended (Journaled) from the Format pop-up menu, type a name for the disk, and then click Erase.
- 5 After the disk is erased, choose Disk Utility > Quit Disk Utility.
- 6 In the Mac OS X Utilities pane, select Reinstall Mac OS X and click Continue.

- 7 To reinstall Mac OS X and your applications, follow the instructions in the Mac OS X Installer.

After reinstalling Mac OS X, you can re-download the Apple applications that came with your iMac and other apps you purchased from the Mac App Store. You can restore your other data and applications from a Time Machine or other backup.

Checking for a Hardware Problem

If you suspect a hardware problem, use the Apple Hardware Test application to help determine if there's a problem with one of the iMac components.

To use Apple Hardware Test:

- 1 Disconnect all external devices from your iMac, except the keyboard and mouse. If you have an Ethernet cable connected, disconnect it.
- 2 Restart your iMac while holding down the D key.
- 3 When the Apple Hardware Test chooser screen appears, select the language you want to use.
- 4 Press the Return key or click the right arrow button.
- 5 When the Apple Hardware Test main screen appears (after about 45 seconds), follow the onscreen instructions.
- 6 If Apple Hardware Test detects a problem, it displays an error code. Make a note of the error code before pursuing support options. If Apple Hardware Test doesn't detect a hardware failure, the problem may be software-related.

Important: If the Apple Hardware Test window doesn't appear after restarting, hold down the Command (⌘), Option, and D keys and restart the computer to access the Apple Hardware Test software from the Internet. Your computer must be connected to a network that has access to the Internet.

Replacing the Batteries

Your Apple Wireless Keyboard and Apple Magic Mouse each come with two AA batteries installed. You can replace them with alkaline, lithium, or rechargeable AA batteries.

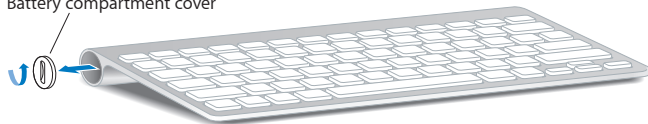
Keep the battery compartment cover and batteries out of the reach of small children.

WARNING: When you replace the batteries, replace them all at the same time. Don't mix old batteries with new batteries or mix battery types (for example, don't mix alkaline and lithium batteries). Don't open or puncture the batteries, install them backwards, or expose them to fire, high temperatures, or water. Keep batteries out of the reach of children.

To replace the batteries in the Apple Wireless Keyboard:

- 1 Press the power button (⏻) to turn off your keyboard.
- 2 Use a coin to remove the battery compartment cover.

Battery compartment cover



- 3 Slide two AA batteries into the battery compartment, as shown below.

Insert batteries

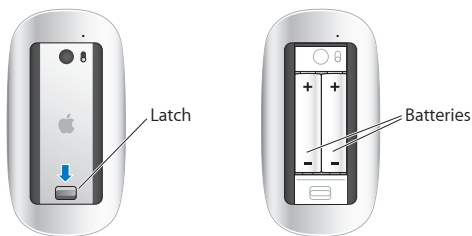


- 4 Replace the battery compartment cover.

To check the battery status, press the power button (⏻). If the indicator light doesn't glow, you may need to change the batteries. You can check the battery level in Keyboard preferences. Choose Apple () > System Preferences and click Keyboard. The battery level is in the lower-left corner.

To replace the batteries in the Apple Magic Mouse:

- 1 Slide the on/off switch on the bottom of your mouse to turn it off.
- 2 Slide the latch down and remove the battery cover.



- 3 Insert the batteries with the positive ends (+) facing up, as shown above.
- 4 Replace the cover and turn on your mouse.

You may have to click your Apple Magic Mouse once to reconnect it to your iMac.

To check the battery status, slide the on/off switch to turn on the mouse. If the indicator light doesn't glow, you may need to change the batteries. You can check the battery level in Mouse Preferences. Choose Apple () > System Preferences and click Mouse. The battery level is shown in the lower-left corner.

Problems with Your Internet Connection

The Network Setup Assistant application on your iMac can help walk you through setting up an Internet connection. Open System Preferences and click Network. Click the “Assist me” button to open Network Setup Assistant.

If you have trouble with your Internet connection, you can try the steps in this section for your type of connection or you can use Network Diagnostics.

To use Network Diagnostics:

- 1 Choose Apple (🍏) > System Preferences.
- 2 Click Network and then click “Assist me.”
- 3 Click Diagnostics to open Network Diagnostics.
- 4 Follow the onscreen instructions.

If Network Diagnostics can't resolve the problem, there may be a problem with the Internet service provider (ISP) you are trying to connect to, with an external device you are using to connect to your ISP, or with the server you are trying to access. You can try the steps in the following sections.

Cable Modem, DSL Modem, and LAN Internet Connections

Make sure all modem cables are firmly plugged in, including the modem power cord, the cable from the modem to your iMac, and the cable from the modem to the wall jack. Also check the cables and power supplies to any Ethernet hubs or routers.

Turn off your DSL or cable modem for a few minutes, and then turn it back on. Some ISPs recommend that you unplug the modem's power cord. If your modem has a reset button, you can press it either before or after you turn the power off and on.

Important: Instructions that refer to modems do not apply to LAN users. LAN users might have hubs, switches, routers, or connection pods that cable and DSL modem users do not have. LAN users should contact their network administrator rather than an ISP.

PPPoE Connections

If you are unable to connect to your ISP using PPPoE (Point to Point Protocol over Ethernet), make sure you entered the correct information in Network preferences.

To enter PPPoE settings:

- 1 Choose Apple (🍏) > System Preferences.
- 2 Click Network.
- 3 Click Add (+) at the bottom of the network connection services list, and choose PPPoE from the Interface pop-up menu.
- 4 Choose an interface for the PPPoE service from the Ethernet pop-up menu. Choose Ethernet if you are connecting to a wired network, or Wi-Fi if you are connecting to a wireless network.
- 5 Click Create.
- 6 Enter the information you received from your service provider, such as the account name, password, and PPPoE service name (if your service provider requires it).
- 7 Click Apply to make the settings active.

Network Connections

Make sure the Ethernet cable is plugged into your iMac and into the network. Check the cables and power supplies to your Ethernet hubs and routers.

If you have two or more computers sharing an Internet connection, be sure that your network is set up properly. You need to know whether your ISP provides only one IP address or multiple IP addresses, one for each computer.

If only one IP address is provided, then you must have a router capable of sharing the connection, also known as network address translation (NAT) or “IP masquerading.” For setup information, check the documentation provided with your router or ask the person who set up your network.

An AirPort base station can be used to share one IP address among multiple computers. For information about using an AirPort base station, see Help Center (click Help in the menu bar and search for “airport”) or visit the AirPort website at www.apple.com/support/airport.

If you can't resolve the issue using these steps, contact your ISP or network administrator.

Problems with Wireless Communication

If you have trouble using wireless communication:

- Make sure the computer or network you are trying to connect to is running and has a wireless access point.
- Make sure you've properly configured the software according to the instructions that came with your base station or access point.
- Make sure your iMac is within antenna range of the other computer or the network's access point. Nearby electronic devices or metal structures can interfere with wireless communication and reduce this range. Repositioning or rotating your iMac might improve reception.
- Check the Wi-Fi status menu (📶) in the menu bar. Up to four bars appear, indicating signal strength. If the signal strength is weak, try changing your location.
- See Help Center (click Help in the menu bar and search for “wi-fi”). Also see the instructions that came with the wireless device for more information.

Keeping Your Software Up to Date

When you're connected to the Internet, Software Update checks periodically to see if updates are available for your computer. You can download and install these free software versions, drivers, and other enhancements from Apple.

You can set how frequently your iMac checks for updates in Software Update preferences. To check manually, choose Apple (🍏) > Software Update. For more information about Software Update, see Help Center (click Help in the menu bar and search for "Software Update").

You can find the latest information about Mac OS X at www.apple.com/macosx. If you have a problem with software from a manufacturer other than Apple, contact the manufacturer. Software manufacturers often provide software updates on their websites.

Learning More, Service, and Support

Your iMac does not have any user-serviceable parts, except the keyboard, mouse, and memory. If you need service, contact Apple or take your iMac to an Apple Authorized Service Provider. You can find more information about your iMac through online resources, onscreen help, System Information, or Apple Hardware Test.

Online Resources

For online service and support information, go to www.apple.com/support. You can search the AppleCare Knowledge Base, check for software updates, or get help on Apple's discussion forums.

Onscreen Help

You can often find answers to your questions, as well as instructions and troubleshooting information, in Help Center. Choose Help > Help Center.

System Information

To get information about your iMac, use System Information. It shows you what hardware and software is installed, the serial number and operating system version, how much memory is installed, and more. To open System Information, choose Apple (🍏) > About This Mac from the menu bar and then click More Info.

AppleCare Service and Support

Your iMac comes with 90 days of technical support and one year of hardware repair warranty coverage at an Apple Retail Store or an Apple-authorized repair center, such as an Apple Authorized Service Provider. You can extend your coverage by purchasing the AppleCare Protection Plan. For information, visit www.apple.com/support/products or visit the website address for your country listed below.

If you need assistance, AppleCare telephone support representatives can help you with installing and opening applications, and basic troubleshooting. Call the support center number nearest you (the first 90 days are complimentary). Have the purchase date and your iMac serial number ready when you call.

Note: Your 90 days of complimentary telephone support begins on the date of purchase and telephone fees may apply.

Country	Phone	Website
United States	1-800-275-2273	www.apple.com/support
Australia	(61) 1-300-321-456	www.apple.com/au/support
Canada (English) (French)	1-800-263-3394	www.apple.com/ca/support www.apple.com/ca/fr/support
Ireland	(353) 1850 946 191	www.apple.com/ie/support
New Zealand	00800-7666-7666	www.apple.com/nz/support
United Kingdom	(44) 0844 209 0611	www.apple.com/uk/support

Telephone numbers are subject to change, and local and national telephone rates may apply. A complete list is available on the web:

www.apple.com/support/contact/phone_contacts.html

Locating Your Product Serial Number

Use any of these methods to find the serial number of your iMac:

- Choose Apple (🍏) > About This Mac. Click the version number beneath the words “Mac OS X” to cycle through the Mac OS X version number, the build version, and the serial number.
- Choose Apple (🍏) > About This Mac and click More Info.
- Look on the bottom of the iMac stand.

5

Last, but Not Least

www.apple.com/environment

Help Center  ergonomics

For your safety and that of your equipment, follow these rules for handling and cleaning your iMac and for working more comfortably. Keep these instructions handy for reference by you and others.

NOTICE: Incorrect storage or use of your computer may void the manufacturer's warranty.

Important Safety Information

WARNING: Failure to follow these safety instructions could result in fire, electric shock, or other injury or damage.

Proper handling Set up your iMac on a stable work surface. Never push objects into the ventilation openings.

Water and wet locations Keep your iMac away from sources of liquid, such as drinks, washbasins, bathtubs, shower stalls, and so on. Protect your iMac from dampness or wet weather, such as rain, snow, and fog.

Power The only way to disconnect power completely is to unplug the power cord. Make sure you pull the plug, not the cord. Always unplug the power cord before opening your iMac to install memory.

Unplug the power cord (by pulling the plug, not the cord) and disconnect the ethernet cable or phone cord if any of the following conditions exist:

- You want to add memory
- The power cord or plug becomes frayed or otherwise damaged
- You spill something into the case
- Your iMac is exposed to rain or excess moisture
- Your iMac has been dropped or the case has been damaged
- You suspect that your iMac needs service or repair
- You want to clean the case (use only the recommended procedure described on page 71)

Important: The only way to turn off power completely is to unplug the power cord. Make sure at least one end of the power cord is within easy reach so that you can unplug your iMac when you need to.

WARNING: Your AC cord has a three-wire grounding plug (a plug that has a third, grounding pin). This plug fits only a grounded AC outlet. If you are unable to insert the plug into an outlet because the outlet isn't grounded, contact a licensed electrician to replace the outlet with a properly grounded outlet. Do not defeat the purpose of the grounding plug.

Power specifications:

- *Voltage:* 100 to 240 V AC
- *Current:* 4 A, maximum
- *Frequency:* 50 to 60 Hz

Hearing damage Permanent hearing loss may occur if earbuds or headphones are used at high volume. Set the volume to a safe level. You can adapt over time to a higher volume of sound that may sound normal but can be damaging to your hearing. If you experience ringing in your ears or muffled speech, stop listening and have your hearing checked. The louder the volume, the less time is required before your hearing could be affected. Hearing experts suggest that to protect your hearing:

- Limit the amount of time you use earbuds or headphones at high volume.
- Avoid turning up the volume to block out noisy surroundings.
- Turn the volume down if you can't hear people speaking near you.

High-risk activities This computer system is not intended for use in the operation of nuclear facilities, aircraft navigation or communications systems, air traffic control systems, or for any other uses where the failure of the computer system could lead to death, personal injury, or severe environmental damage.

Mouse Class 1 Laser Information

The Apple Magic Mouse is a Class 1 laser product in accordance with IEC60825-1 A1 A2 and 21 CFR 1040.10 and 1040.11 except for deviations pursuant to Laser Notice No. 50, dated July 26, 2001.

Caution: Modification of this device may result in hazardous radiation exposure. For your safety, have this equipment serviced only by an Apple Authorized Service Provider.

A Class 1 laser is safe under reasonably foreseeable conditions per the requirements in IEC 60825-1 and 21 CFR 1040. However, it is recommended that you do not direct the laser beam at anyone's eyes.

Laser Information for Optical Disc Drives

WARNING: Making adjustments or performing procedures other than those specified in your equipment's manual may result in hazardous radiation exposure.

The optical disc drive in your iMac contains a laser that is safe in normal use but that may be harmful to your eyes if disassembled. For your safety, have this equipment serviced only by an Apple Authorized Service Provider.

Important: Electrical equipment may be hazardous if misused. Operation of this product, or similar products, must always be supervised by an adult. Do not allow children access to the interior of any electrical product and do not permit them to handle any cables.

WARNING: Never push objects of any kind into this product through the ventilation openings in the case. Doing so may be dangerous and damage your computer.

Do Not Make Repairs Yourself

Your iMac has no user-serviceable parts, except the keyboard, mouse, and memory (see “Installing Memory” on page 39). Do not attempt to open your iMac. If your iMac needs service, contact an Apple Authorized Service Provider or Apple for service. See “Learning More, Service, and Support” on page 62.

If you open your iMac or install items other than memory, you risk damaging your equipment. Such damage isn't covered by the limited warranty on your iMac.

Important Handling Information

NOTICE: Failure to follow these handling instructions could result in damage to your iMac or other property.

Operating environment Operating your iMac outside these ranges may affect performance:

- *Operating temperature:* 50° to 95° F (10° to 35° C)
- *Storage temperature:* -4° to 116° F (-20° to 47° C)
- *Relative humidity:* 5% to 95% (noncondensing)
- *Maximum operating altitude:* 10,000 feet (3048 meters)

Do not operate your iMac in areas with significant amounts of airborne dust, or smoke from cigarettes, cigars, ashtrays, stoves, or fireplaces, or near an ultrasonic humidifier using unfiltered tap water. Tiny airborne particles produced by smoking, cooking, burning, or using an ultrasonic humidifier with unfiltered water may, in rare instances, enter the ventilation openings of your iMac and, under certain conditions, result in a slight haze on the inside surface of the glass panel that covers the iMac display.

Turning on your iMac Never turn on your iMac unless all of its internal and external parts are in place. Operating the computer when parts are missing may be dangerous and may damage your computer.

Carrying your iMac Before you lift or reposition your iMac, shut it down and disconnect all cables and cords connected to it. To lift or move your iMac, hold its sides.

Using connectors and ports Never force a connector into a port. When connecting a device, make sure the port is free of debris, that the connector matches the port, and that you have positioned the connector correctly in relation to the port.

Using the optical drive The SuperDrive in your iMac supports standard 12 cm (4.7 inch) discs. Irregularly shaped discs or discs smaller than 12 cm (4.7 inches) are not supported.

Storing your iMac If you are going to store your iMac for an extended period of time, keep it in a cool location (ideally, 71° F or 22° C).

Cleaning Your iMac

Follow these guidelines when cleaning the outside of your iMac and its components:

- Shut down your iMac and disconnect all cables.
- Use a damp, soft, lint-free cloth to clean the exterior of your iMac. Avoid getting moisture in any openings. Do not spray liquid directly on your iMac.
- Don't use aerosol sprays, solvents, or abrasives.

Cleaning Your iMac Display

Use a clean, soft, lint-free cloth to clean the display.

To clean your iMac display, do the following:

- Shut down your iMac and disconnect all cables.
- Dampen a clean, soft, lint-free cloth with water only, and then wipe the screen. Do not spray liquid directly on the screen.

Cleaning Your Mouse

You may need to clean your mouse from time to time to remove dirt and dust that has accumulated. Use a lint-free cloth that's been lightly moistened with water. Don't get moisture in any openings or use aerosol sprays, solvents, or abrasives.

If you use a wired Apple Mouse with your iMac, hold the mouse upside-down and roll the scroll ball vigorously with a clean, soft, lint-free cloth, to help dislodge any particles that may interfere with proper scrolling.

Understanding Ergonomics

Here are some tips for setting up a healthy work environment.

Keyboard

When you use the keyboard, your shoulders should be relaxed. Your upper arm and forearm should form an approximate right angle, with your wrist and hand in roughly a straight line.

Change hand positions often to avoid fatigue. Some computer users might develop discomfort in their hands, wrists, or arms after intensive work without breaks. If you begin to develop chronic pain or discomfort in your hands, wrists, or arms, consult a qualified health specialist.

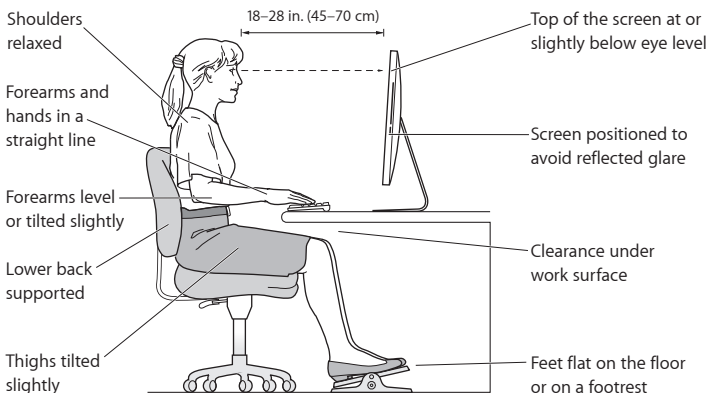
Mouse

Position the mouse at the same height as the keyboard and within a comfortable reach.

Display

Arrange the display so that the top of the screen is slightly below eye level when you're sitting at the keyboard. The best distance from your eyes to the screen is up to you, although most people seem to prefer 18 to 28 inches (45 to 70 cm).

Position the display to minimize glare and reflections on the screen from overhead lights and nearby windows. The stand lets you set the display at the best angle for viewing, helping to reduce or eliminate glare from lighting sources you can't move.



Chair

An adjustable chair that provides firm, comfortable support is best. Adjust the height of the chair so your thighs are horizontal and your feet are flat on the floor. The back of the chair should support your lower back (lumbar region). Follow the manufacturer's instructions for adjusting the backrest to fit your body properly.

You might have to raise your chair so that your forearms and hands are at the proper angle to the keyboard. If this makes it impossible to rest your feet flat on the floor, use a footrest with adjustable height and tilt to make up for any gap between the floor and your feet. Or you can lower the desktop to eliminate the need for a footrest. Another option is to use a desk with a keyboard tray that's lower than the regular work surface.

More information about ergonomics is available on the web:

www.apple.com/about/ergonomics

Apple and the Environment

Apple Inc. recognizes its responsibility to minimize the environmental impact of its operations and products.

More information is available on the web:

www.apple.com/environment

Regulatory Compliance Information

FCC Compliance Statement

This device complies with part 15 of the FCC rules. Operation is subject to the following two conditions: (1) This device may not cause harmful interference, and (2) this device must accept any interference received, including interference that may cause undesired operation. See instructions if interference to radio or television reception is suspected.

Radio and Television Interference

This computer equipment generates, uses, and can radiate radio-frequency energy. If it is not installed and used properly—that is, in strict accordance with Apple's instructions—it may cause interference with radio and television reception.

This equipment has been tested and found to comply with the limits for a Class B digital device in accordance with the specifications in Part 15 of FCC rules. These specifications are designed to provide reasonable protection against such interference in a residential installation. However, there is no guarantee that interference will not occur in a particular installation.

You can determine whether your computer system is causing interference by turning it off. If the interference stops, it was probably caused by the computer or one of the peripheral devices.

If your computer system does cause interference to radio or television reception, try to correct the interference by using one or more of the following measures:

- Turn the television or radio antenna until the interference stops.
- Move the computer to one side or the other of the television or radio.
- Move the computer farther away from the television or radio.
- Plug the computer into an outlet that is on a different circuit from the television or radio. (That is, make certain the computer and the television or radio are on circuits controlled by different circuit breakers or fuses.)

If necessary, consult an Apple Authorized Service Provider or Apple. See the service and support information that came with your Apple product. Or consult an experienced radio/television technician for additional suggestions.

Important: Changes or modifications to this product not authorized by Apple Inc. could void the EMC compliance and negate your authority to operate the product.

This product has demonstrated EMC compliance under conditions that included the use of compliant peripheral devices and shielded cables between system components. It is important that you use compliant peripheral devices and shielded cables (including Ethernet network cables) between system components to reduce the possibility of causing interference to radios, television sets, and other electronic devices.

Responsible party (contact for FCC matters only):

Apple Inc. Corporate Compliance
1 Infinite Loop, MS 26-A
Cupertino, CA 95014

Wireless Radio Use

This device is restricted to indoor use when operating in the 5.15 to 5.25 GHz frequency band.

Cet appareil doit être utilisé à l'intérieur.

この製品は、周波数帯域 5.18 ~ 5.32 GHz で動作しているときは、屋内においてのみ使用可能です。

Exposure to Radio Frequency Energy

The radiated output power of this device is well below the FCC and EU radio frequency exposure limits. However, this device should be operated with a minimum distance of at least 20 cm between its antennas and a person's body and the antennas used with this transmitter must not be collocated or operated in conjunction with any other antenna or transmitter subject to the conditions of the FCC Grant.

FCC Bluetooth Wireless Compliance

The antenna used with this transmitter must not be collocated or operated in conjunction with any other antenna or transmitter subject to the conditions of the FCC grant.

Canadian Compliance Statement

This device complies with Industry Canada license-exempt RSS standard(s). Operation is subject to the following two conditions: (1) this device may not cause interference, and (2) this device must accept any interference, including interference that may cause undesired operation of the device.

Cet appareil est conforme aux normes CNR exemptes de licence d'Industrie Canada. Le fonctionnement est soumis aux deux conditions suivantes : (1) cet appareil ne doit pas provoquer d'interférences et (2) cet appareil doit accepter toute interférence, y compris celles susceptibles de provoquer un fonctionnement non souhaité de l'appareil.

Bluetooth Industry Canada Statement

This Class B device meets all requirements of the Canadian interference-causing equipment regulations.

Cet appareil numérique de la Class B respecte toutes les exigences du Règlement sur le matériel brouilleur du Canada.

Industry Canada Statement

Complies with the Canadian ICES-003 Class B specifications. Cet appareil numérique de la classe B est conforme à la norme NMB-003 du Canada. This device complies with RSS 210 of Industry Canada.

Bluetooth Europe—EU Declaration of Conformity

This wireless device complies with the R&TTE Directive.

Europe—EU Declaration of Conformity

See www.apple.com/euro/compliance.



Български Apple Inc. декларира, че това iMac е в съответствие със съществените изисквания и другите приложими правила на Директива 1999/5/ЕК.

Česky Společnost Apple Inc. tímto prohlašuje, že tento iMac je ve shodě se základními požadavky a dalšími příslušnými ustanoveními směrnice 1999/5/ES.

Dansk Undertegnede Apple Inc. erklærer herved, at følgende udstyr iMac overholder de væsentlige krav og øvrige relevante krav i direktiv 1999/5/EF.

Deutsch Hiermit erklärt Apple Inc., dass sich das iMac in Übereinstimmung mit den grundlegenden Anforderungen und den übrigen einschlägigen Bestimmungen der Richtlinie 1999/5/EG befindet.

Eesti Käesolevaga kinnitab Apple Inc., et see iMac vastab direktiivi 1999/5/EÜ põhinõuetele ja nimetatud direktiivis tulenevatele teistele asjakohastele sätetele.

English Hereby, Apple Inc. declares that this iMac is in compliance with the essential requirements and other relevant provisions of Directive 1999/5/EC.

Español Por medio de la presente Apple Inc. declara que este iMac cumple con los requisitos esenciales y cualesquiera otras disposiciones aplicables o exigibles de la Directiva 1999/5/CE.

Ελληνικά Με την παρούσα, η Apple Inc. δηλώνει ότι αυτή η συσκευή iMac συμμορφώνεται προς τις βασικές απαιτήσεις και τις λοιπές σχετικές διατάξεις της Οδηγίας 1999/5/ΕΚ.

Français Par la présente Apple Inc. déclare que l'appareil iMac est conforme aux exigences essentielles et aux autres dispositions pertinentes de la directive 1999/5/CE.

Íslenska Apple Inc. lýsir því hér með yfir að þetta tæki iMac fullnægir lágmarkskröfum og öðrum viðeigandi ákvæðum Evróputilskipunar 1999/5/EC.

Italiano Con la presente Apple Inc. dichiara che questo dispositivo iMac è conforme ai requisiti essenziali ed alle altre disposizioni pertinenti stabilite dalla direttiva 1999/5/CE.

Latviski Ar šo Apple Inc. deklarē, ka iMac ierīce atbilst Direktīvas 1999/5/EK būtiskajām prasībām un citiem ar to saistītajiem noteikumiem.

Lietuvių Šiuo „Apple Inc.“ deklaruojama, kad šis iMac atitinka esminius reikalavimus ir kitas 1999/5/EB Direktyvos nuostatas.

Magyar Alulírott, Apple Inc. nyilatkozom, hogy a iMac megfelel a vonatkozó alapvető követelményeknek és az 1999/5/EC irányelv egyéb előírásainak.

Malti Hawnhekk, Apple Inc., jiddikjara li dan iMac jikkonforma mal-htigijiet essenzjali u ma provvedimenti oħrajn rilevanti li hemm fid-Direttiva 1999/5/EC.

Nederlands Hierbij verklaart Apple Inc. dat het toestel iMac in overeenstemming is met de essentiële eisen en de andere bepalingen van richtlijn 1999/5/EG.

Norsk Apple Inc. erklærer herved at dette iMac-apparatet er i samsvar med de grunnleggende kravene og øvrige relevante krav i EU-direktivet 1999/5/EF.

Polski Niniejszym Apple Inc. oświadczam, że ten iMac są zgodne z zasadniczymi wymogami oraz pozostałymi stosownymi postanowieniami Dyrektywy 1999/5/EC.

Português Apple Inc. declara que este dispositivo iMac está em conformidade com os requisitos essenciais e outras disposições da Directiva 1999/5/CE.

Română Prin prezenta, Apple Inc. declară că acest aparat iMac este în conformitate cu cerințele esențiale și cu celelalte prevederi relevante ale Directivei 1999/5/CE.

Slovensko Apple Inc. izjavlja, da je ta iMac skladne z bistvenimi zahtevami in ostalimi ustreznimi določili direktive 1999/5/ES.

Slovensky Apple Inc. týmto vyhlasuje, že toto iMac spĺňa základné požiadavky a všetky príslušné ustanovenia Smernice 1999/5/ES.

Suomi Apple Inc. vakuuttaa täten, että tämä iMac tyyppinen laite on direktiivin 1999/5/EY oleellisten vaatimusten ja sitä koskevien direktiivin muiden ehtojen mukainen.

Svenska Härmed intygar Apple Inc. att denna iMac står i överensstämmelse med de väsentliga egenskapskrav och övriga relevanta bestämmelser som framgår av direktiv 1999/5/EG.

A copy of the EU Declaration of Conformity is available at:
www.apple.com/euro/compliance

This equipment can be used in the following countries:

AT	BG	BE	CY	CZ	DK	EE	FI	FR	DE	GR	HU
IE	IT	LV	LT	LU	MT	NL	PL	PT	RO	SK	SL
ES	SE	GB	IS	LI	NO	CH					

Korea Warning Statements

대한민국 규정 및 준수

방통위고시에 따른 고지사항

해당 무선설비는 운용 중 전파혼신 가능성이 있음,
이 기기는 인명안전과 관련된 서비스에 사용할 수 없습니다.

B급 기기(가정용 방송통신기자재)

이 기기는 가정용(B급) 전자파적합기기로서 주로 가정에서 사용하는 것을 목적으로 하며, 모든 지역에서 사용할 수 있습니다.

Singapore Wireless Certification

Complies with
IDA Standards
DB00063

Taiwan Wireless Statements

無線設備的警告聲明

經型式認證合格之低功率射頻電機，非經許可，公司、商號或使用者均不得擅自變更頻率、加大功率或變更原設計之特性及功能。低功率射頻電機之使用不得影響飛航安全及干擾合法通信；經發現有干擾現象時，應立即停用，並改善至無干擾時方得繼續使用。前項合法通信指依電信法規定作業之無線電通信。低功率射頻電機須忍受合法通信或工業、科學及醫療用電波輻射性電機設備之干擾。

如有這 頻率:

於 5.25GHz 至 5.35GHz 區域內操作之
無線設備的警告聲明

工作頻率 5.250 ~ 5.350GHz 該頻段限於室內使用。

Taiwan Class B Statement

Class B 設備的警告聲明

NL

警告

本電池如果更換不正確會有爆炸的危險
請依製造商說明書處理用過的電池

Japan VCCI Class B Statement

情報処理装置等電波障害自主規制について

この装置は、情報処理装置等電波障害自主規制協議会 (VCCI) の基準に基づくクラス B 情報技術装置です。この装置は家庭環境で使用されることを目的としていますが、この装置がラジオやテレビジョン受信機に近接して使用されると、受信障害を引き起こすことがあります。

取扱説明書に従って正しい取扱をしてください。

Russia



ME67

External USB Modem Information

When connecting your iMac to the phone line using an external USB modem, refer to the telecommunications agency information in the documentation that came with your modem.

ENERGY STAR® Compliance



As an ENERGY STAR® partner, Apple has determined that standard configurations of this product meet the ENERGY STAR® guidelines for energy efficiency. The ENERGY STAR® program is a partnership with electronic equipment manufacturers to promote energy-efficient products. Reducing energy consumption of products saves money and helps conserve valuable resources.

This computer is shipped with power management enabled with the computer set to sleep after 10 minutes of user inactivity. To wake your computer, click the mouse or press any key on the keyboard.

For more information about ENERGY STAR®, visit: www.energystar.gov

Disposal and Recycling Information



This symbol indicates that your product must be disposed of properly according to local laws and regulations. When your product reaches its end of life, contact Apple or your local authorities to learn about recycling options.

For information about Apple's recycling program, go to www.apple.com/recycling.

European Union: Disposal Information



The symbol above means that according to local laws and regulations your product should be disposed of separately from household waste. When this product reaches its end of life, take it to a collection point designated by local authorities. Some collection points accept products for free. The separate collection and recycling of your product at the time of disposal will help conserve natural resources and ensure that it is recycled in a manner that protects human health and the environment.

Türkiye

EEE yönetmeliğine (Elektrikli ve Elektronik Eşyalarda Bazı Zararlı Maddelerin Kullanımının Sınırlanırılmasına Dair Yönetmelik) uygundur.

Brasil: Informações sobre eliminação e reciclagem



O símbolo acima indica que este produto e/ou sua bateria não devem ser descartadas no lixo doméstico. Quando decidir descartar este produto e/ou sua bateria, faça-o de acordo com as leis e diretrizes ambientais locais. Para informações sobre o programa de reciclagem da Apple, pontos de coleta e telefone de informações, visite www.apple.com/br/environment.

Battery Disposal Information

Dispose of batteries according to your local environmental laws and guidelines.

Deutschland: Dieses Gerät enthält Batterien. Bitte nicht in den Hausmüll werfen. Entsorgen Sie dieses Gerät am Ende seines Lebenszyklus entsprechend der maßgeblichen gesetzlichen Regelungen.

Nederlands: Gebruikte batterijen kunnen worden ingeleverd bij de chemokar of in een speciale batterijcontainer voor klein chemisch afval (kca) worden gedeponeerd.

California: The coin cell battery in the optional Apple Remote contains perchlorates. Special handling and disposal may apply. Refer to: www.dtsc.ca.gov/hazardouswaste/perchlorate

台灣



廢電池請回收

Taiwan Battery Statement

警告：請勿戳刺或焚燒。此電池不含汞。

Chinese Battery Statement

警告：不要刺破或焚燒。該電池不含水銀。

中国

有毒或 有害物质	零部件			
	电路板	显示屏	附件	键盘/鼠标
铅 (Pb)	X	X	X	X
汞 (Hg)	0	0	0	0
镉 (Cd)	0	0	0	0
六价铬 (Cr, VI)	0	0	0	0
多溴联苯 (PBB)	0	0	0	0
多溴二苯醚 (PBDE)	0	0	0	0

0: 表示该有毒有害物质在该部件所有均质材料中的含量均在 SJ/T 11363-2006 规定的限量要求以下。

X: 表示该有毒有害物质至少在该部件的某一均质材料中的含量超出 SJ/T 11363-2006 规定的限量要求。

根据中国电子行业标准 SJ/T11364-2006 和相关的中国政府法规，本产品及其某些内部或外部组件上可能带有环保使用期限标识。取决于组件和组件制造商，产品及其组件上的使用期限标识可能有所不同。组件上的使用期限标识优先于产品上任何与之相冲突的或不同的环保使用期限标识。



Looking for Something?

Index

A

- ambient light sensor 21
- Apple Hardware Test 55
- Apple Magic Mouse 27, 30, 58
- Apple Mouse 72
- Apple Remote 16, 32, 35
- Apple Wireless Keyboard 27, 28, 56
- applications
 - Disk Utility 52
 - Force Quit 47
 - iLife 35
 - Mac App Store 54, 55
 - Mac OS X Utilities 50
 - Migration Assistant 53
- assistants
 - Network Setup Assistant 58
- audio in/optical digital audio in port 23

B

- batteries
 - Apple Remote 33
 - disposal 79
 - wireless keyboard 57
 - wireless mouse 58
- Bluetooth technology
 - overview 25

- brightness keys 27
- built-in
 - FaceTime HD camera 21
 - microphone 21
 - speakers 21
- button, power 16

C

- cable modem 11
- camera
 - FaceTime HD 21
- carrying your computer 70
- chair 74
- changing
 - System Preferences 15
 - the desktop 15
- cleaning
 - the display 71
 - the mouse 72
 - your iMac 71
- computer. *See* iMac
- computer disposal 78
- connecting
 - an Ethernet cable 11
 - a USB keyboard 12
 - a USB mouse 12
 - cable modem 11
 - dial-up modem 11

- DSL modem 11
- FireWire devices 23
- headphones 23
- to a network 11
- USB devices 23
- controls
 - brightness 27
 - eject CD or DVD 27
 - media 27
 - volume 27

D

- data transfer
 - FireWire 23
 - Thunderbolt 23
 - USB 2.0 23
- date and time settings 50
- desktop, customizing 15
- dial-up connection 11
- DIMMs. *See* memory
- discs, supported types 71
- Disk Utility 52
- display
 - cleaning 71
 - ergonomics 73
- Dock 34
- downloading software 62
- DSL modem 11

E

- ejecting a disc 50
- environment 74
- ergonomics 72
- Ethernet 11
- Ethernet port 23
- external USB modem 11, 23, 78

F

- F1 to F12 function keys 27
- FaceTime 21
- FireWire
 - connections 35
 - port 23
- flashing question mark 48
- Force Quit, an application 47
- function keys 27

H

- hand positions 72
- headphone port 23
- Help Center 8, 15, 63

I

- iLife applications 35
- iMac
 - back view 24
 - cleaning 71
 - features 20
 - front view 20
 - other components 24
 - ports 22

- putting to sleep 16
- setting up 10
- shutting down 17
- turning on 13
- indicator light
 - keyboard 28
 - mouse 30
- infrared receiver 21
- Internet
 - connecting 11
 - connection problems 58
- IP
 - address sharing 61
 - masquerading 61

K

- keyboard
 - about 27
 - ergonomics 72
 - features 26
 - indicator light 28
 - pairing 29
 - setup 12
 - using 29
 - wireless 12
- keys
 - brightness 27
 - Launchpad 27
 - media 27
 - Media Eject 27
 - Mission Control 27
 - volume 27

L

- Launchpad key 27

M

- Mac App Store 55
- Mac OS X
 - website 34
- Mac OS X Utilities
 - application 51
- Magic Mouse 27, 30, 58
- Media Eject Key 27
- media keys 27
- memory
 - access door 25, 40
 - how much is installed 44
 - installing 39
- microphone 21
- Mission Control key 27
- modem
 - cable 23
 - DSL 23
 - external USB 11, 23, 78
- mouse
 - cleaning 72
 - features 27
 - indicator light 30
 - pairing 31
 - setting up 12
 - using 31
 - wireless 12

N

network

- address translation (NAT) 61
- connecting to 11
- connection problems 60
- diagnostics 59
- setup assistant 58
- wireless 11

Network Setup Assistant 58

O

- online resources 62
- onscreen help 63
- operating environment 70
- optical digital audio 23
- optical drive
 - about 21
 - safety 69
 - supported disc sizes 71

P

- pairing
 - keyboard 29
 - mouse 31
 - remote 33
- parameter RAM, resetting 49
- ports
 - audio in 23
 - audio out 23
 - Ethernet 23
 - FireWire 800 23
 - headphone 23

- overview 22
- power 10, 25
- Thunderbolt 23
- USB 12, 23
- power button 12, 25
- power port 10, 25
- power specifications 68
- PPPoE connections 60
- problems. *See* troubleshooting

Q

- question mark, flashing 48

R

- RAM. *See* memory
- reinstalling Mac OS X 53
- repairing a disk 52
- replacing batteries 56, 58
- resetting parameter RAM (PRAM) 49
- restoring information 53
- restoring your computer 54

S

- safety
 - important information 66
 - optical drive 69
- screen brightness, setting 27
- SD card slot 21
- SDRAM. *See* memory
- security slot 25
- serial number 64

- service and support 62, 63
- setting up your iMac 10
- shutting down
 - before installing memory 39
 - the computer 17
- sleep 16
- software
 - downloading 54, 55
- Software Update 62
- S/PDIF stereo 23
- speakers 21, 23
- specifications
 - operating environment 70
 - power 68
- storing your iMac 71
- SuperDrive
 - about 21
 - supported disc sizes 71
- support and service 62, 63
- System Preferences
 - customizing the desktop 15
 - Energy Saver 16
 - Startup Disk 48

T

- Thunderbolt 23
- troubleshooting
 - AppleCare 63
 - Apple Hardware Test 55
 - computer freezes during startup 48
 - computer won't respond 47

- computer won't turn on 49
- date and time settings 50
- ejecting a disc 50
- force an application to quit 47
- Internet connection 58
- PPPoE connections 60
- resetting PRAM 49
- service and support 62
- using Help Center 63
- turning on your iMac 13
- typing position 72

U

- updating software 62
- USB
 - connections 35
 - keyboard, connecting 12
 - modem, connecting 11, 23, 78
 - mouse, connecting 12
 - ports 23

V

- Volume keys 27

W

- waking iMac from sleep 16
- wireless
 - 802.11n Wi-Fi 25
 - Bluetooth technology 25
 - keyboard 12, 29
 - mouse 12
 - networking 11

 Apple Inc.
© 2011 Apple Inc. All rights reserved.

Under the copyright laws, this manual may not be copied, in whole or in part, without the written consent of Apple.

Every effort has been made to ensure that the information in this manual is accurate. Apple is not responsible for printing or clerical errors.

Apple
1 Infinite Loop
Cupertino, CA 95014
408-996-1010
www.apple.com

The Apple logo is a trademark of Apple Inc., registered in the U.S. and other countries. Use of the “keyboard” Apple logo (Option-Shift-K) for commercial purposes without the prior written consent of Apple may constitute trademark infringement and unfair competition in violation of federal and state laws.

Apple, the Apple logo, Apple TV, AirPort, FaceTime, Finder, FireWire, GarageBand, iChat, iLife, iMac, iMovie, iPhone, iPhoto, iPod, iPod touch, iTunes, Keynote, Mac, Mac OS, Photo Booth, QuickTime, Safari, SuperDrive, Time Capsule, and Time Machine are trademarks of Apple Inc., registered in the U.S. and other countries.

The FireWire logo, iPad, and Multi-Touch are trademarks of Apple Inc.

Apple, AppleCare, Apple Store, and iTunes Store are service marks of Apple Inc., registered in the U.S. and other countries.

App Store is a service mark of Apple Inc.

ENERGY STAR® is a U.S. registered trademark.

The Bluetooth® word mark and logos are registered trademarks owned by Bluetooth SIG, Inc. and any use of such marks by Apple is under license.

Thunderbolt and the Thunderbolt logo are trademarks of Intel Corporation in the United States and other countries.

Other company and product names mentioned herein may be trademarks of their respective companies. Mention of third-party products is for informational purposes only and constitutes neither an endorsement nor a recommendation. Apple assumes no responsibility with regard to the performance or use of these products.

Manufactured under license from Dolby Laboratories. “Dolby,” “Pro Logic,” and the double-D symbol are trademarks of Dolby Laboratories. Confidential Unpublished Works, © 1992–1997 Dolby Laboratories, Inc. All rights reserved.

Simultaneously published in the United States and Canada.

