

# Registration Information



**naaee**  
North American Association  
for Environmental Education



In partnership with

## 53rd Annual Conference

November 6–9

## 21st Annual Research Symposium

November 5–6



Pittsburgh, renowned as the “City of Bridges” with an impressive 446 structures spanning its rugged terrain, stands as a testament to the power of connectivity.

Our 2024 Annual Conference and Research Symposium draws inspiration from these iconic bridges, celebrating their symbolic significance as we address challenges and successes in the environmental education landscape.

Environmental educators play a pivotal role in working collaboratively across boundaries, dismantling barriers in communities, nurturing innovative partnerships, and amplifying program impact. As we gather in Pittsburgh, we’ll focus on bridging gaps across borders, disciplines, and ideas, and explore how we foster mutual understanding and discover common ground.

NAAEE 2024 offers a dynamic program featuring inspiring and thoughtful keynotes, a rich array of workshops and presentations, engaging symposium panels and discussions, and bright spots and posters showcasing innovative practices and emerging research. Along with a wide variety of sessions, attendees will enjoy ample opportunities for networking, growth, and change. Together, we’ll dig into vital topics, such as climate change education and climate justice, research-based practice, the benefits of connecting to nature, developing a green workforce, protecting biodiversity, and centering equity in our work.

**Join us in Pittsburgh as we build bridges to a more sustainable, just, and environmentally literate future.**

For details and registration information: [conference.naaee.org](https://conference.naaee.org)

## Schedule at a Glance

Check our conference website for additional details as they become available.

## Annual Conference and Research Symposium

### Monday, November 4

- Research Symposium Field Trip\*
- Research Networking Dinner\*

### Tuesday, November 5

- Research Symposium\*
- Symposium Keynote: Michelle King
- Symposium poster session and reception

### Wednesday, November 6

- Research Symposium continues
- Research Symposium early career mentoring and networking
- Preconference workshops (full-day and half-day)\*
- Preconference field trips\*
- Opening reception, including Share Fair, Authors' Corner, and exhibits (starts at 5:00 PM EST)
- Conference opening and keynote: Angela Coleman, Gregg Behr and Ryan Rydzewski
- Film Premiere: *Bridges of Hope: Environmental Education in a Divided World*

### Thursday, November 7

- Early morning outing: Urban bird walk
- Concurrent sessions
- Keynote: Vik Mohan
- Exhibit Fair luncheon with Poster Session
- Evaluation Clinic
- NMEA Whale of a Share-a-Thon
- Project Drawdown's Neighborhood: Pittsburgh Climate Heroes
- Free night: Optional events include young professionals gathering, Pittsburgh Pubs\*

### Friday, November 8

- Early morning outing: Urban lichen exploration
- Concurrent sessions
- Keynote: Grethel Aguilar
- eePRO Groups lunchtime meetings
- Closing party: Heinz History Center

### Saturday, November 9

- Concurrent sessions
- Awards luncheon
- Closing keynote: To be announced
- Conference ends at 2:30 PM EST

\*Requires separate registration fee



**Please note: NAAEE2024 takes place over U.S. Election Day.**

Please plan accordingly to vote early or remotely if you are a voter in the United States.



## EVERYONE IS WELCOME!

NAAEE is committed to advancing equity, inclusion, justice, and belonging in the field of environmental education and throughout our conference. At least 15 percent of our concurrent sessions will explore strategies and programs that help diversify our audiences as well as our workforce, build cultural competence, support environmental justice, engage with new audiences, forge new and lasting partnerships, honor traditional knowledge, and increase our reach and relevance throughout society. Affinity groups including the Environmental Professionals of Color (EPOC) and the Queer Environmental Educators Network (QEEN) will also be meeting.







# 53rd Annual Conference

## November 6–9



### Featured Speakers

Wednesday, November 6, 6:30 PM EST



**Opening Remarks:**  
**Angela Coleman,**  
**Associate Chief,**  
**USDA Forest Service**

Angela Coleman serves as the Associate Chief of the U.S. Department of Agriculture’s

Forest Service. She served as Forest Service Chief of Staff from 2015 to 2021, where she oversaw the Chief’s Office daily operations and staff, issues management, and Office of Communication and Legislative Affairs programs. She provided senior-level support to the Chief of the agency and the Executive Leadership Team to advance and deliver the agency’s natural resource conservation mission.



**Gregg Behr and Ryan Rydzewski**  
**Nurturing the Neighborhood**

Authors of *When You Wonder, You’re Learning: Mister Rogers’ Enduring Lessons for Raising Creative, Curious, Caring Kids*



**Gregg Behr, JD**

Gregg Behr, executive director of The Grable Foundation since 2006, is a father and children’s advocate. For more than 15 years, he has helped lead Remake Learning—a network of educators, technologists, designers, and makers he founded in

2007—to international renown. Among the foremost examples of learning ecosystems, Remake Learning has turned heads everywhere from The White House to the World Economic Forum for its efforts to ignite children’s curiosity; encourage

creativity; and foster justice, joy, and belonging in schools, libraries, museums, and other sites of learning. A graduate of the University of Notre Dame and Duke University, Gregg holds honorary degrees from Carlow University and Saint Vincent College. He’s an advisor to The Brookings Institution and The Fred Rogers Institute, and has been honored by President Obama, the Disruptor Foundation, ISTE, and AASA as an innovator and thought leader.



**Ryan Rydzewski**

Ryan Rydzewski is an award-winning author and speaker. A graduate of the University of Pittsburgh, he taught elementary school in south Louisiana before earning an MFA in nonfiction writing from Chatham University. As a science and education reporter, his

magazine stories focus on everything from schools to space travel to Mister Rogers’ Neighborhood, and he regularly leads workshops for educators and parents. Born in Erie, Pennsylvania, Ryan lives in Pittsburgh with his wife, Jacqueline, and their son, Russell.

### A few of our outstanding plenary speakers!



Angela Coleman



Gregg Behr, JD



Ryan Rydzewski



Dr. Vik Mohan



Dr. Grethel Aguilar



Michelle King

## Featured Speakers

Thursday, November 7, 11:30 AM EST



**Dr. Vik Mohan**  
*Healing Our Planet, Healing Ourselves*

Dr. Vik Mohan is a practicing doctor, Director of Community Health at Blue Ventures Conservation, life coach and well-being practitioner. Working with fishing communities in southwest Madagascar, he

saw how poor health was impacting the community's ability to engage in marine conservation. At the request of partner communities, he led development of Blue Ventures' community health program and integrated it into their fisheries and marine conservation programming. Having witnessed firsthand how this has strengthened community engagement in conservation as well as improved community health, he now focuses on supporting other organizations to replicate this health-environment approach.

Dr. Mohan works with conservation practitioners, leaders, and teams to ensure that those undertaking this vitally important work continue to thrive.

Friday, November 8, 11:30 AM EST



**Dr. Grethel Aguilar, Director General,  
International Union for Conservation  
of Nature (IUCN)**  
*Building Bridges Between  
Education and Conservation*

Dr. Grethel Aguilar, born in Costa Rica, assumed office as Director General of

the International Union for Conservation of Nature (IUCN) in October 2023. Dr. Aguilar brings with her thirty years of experience in conservation and sustainable development, having worked extensively on developing and applying environmental law and policy in collaboration with governments and civil society. In particular, she is deeply passionate about the rights of Indigenous peoples and local communities and has pushed for the inclusion of their knowledge and experience in mainstream conservation policy.

Through her work in field projects, Dr. Aguilar has helped communities access clean water, advocated environmental justice, assisted Indigenous peoples in obtaining rights to their natural resources, and championed gender equality in environmental governance.

**Additional keynotes to be announced—check our website for details**

Please join us in thanking  
the fantastic co-chairs  
of NAAEE's 53rd Annual  
Conference and  
21st Annual Research  
Symposium.



**Taiji Nelson**  
Conference  
Co-Chair



**Julie Travaglini**  
Conference  
Co-Chair



**Dr. Marijke Hecht**  
Research  
Symposium  
Co-Chair



**Dr. Kathayoon Khalil**  
Research  
Symposium  
Co-Chair

### 2024 Conference Strands

Choose from a wide variety of concurrent sessions in six strands:

- Advancing Civic Engagement and Sustainable Communities
- Building Leadership for Environmental Education
- Connecting with Nature
- Conservation and Environmental Education
- Educating for a Changing Climate
- Enhancing Environmental Education in Formal Settings





# 21st Annual Research Symposium

Tuesday, November 5 and  
Wednesday, November 6



NAAEE's annual Research Symposium brings together new and experienced researchers from around the globe to explore the current state and future directions of environmental education research and advance the use of practices proven to be effective. The symposium fosters discussion and collaboration among members of the EE research field, including researchers, students, policymakers, and practitioners at all stages of their careers. Colleagues and mentors also offer publishing and career advice, and discuss issues and concerns in the world of research.

Sessions will promote dialogue as we confront myriad challenges ranging from climate change to environmental, economic, and racial injustices. Panels, roundtable discussions, workshops, and posters will address research methods and theory as well as pedagogy and programming. Themes include decolonizing methodologies, theories of empowerment, practice-embedded research, culturally relevant pedagogy, civic action, common world pedagogy, and teaching activism.

## Featured Speaker

Tuesday, November 5, 9:30 AM EST



**Michelle King**  
*Finding Our Way Home in Uncertain Times*

Michelle King: Learning Instigator. Love Activist. Beloved Community-Architect. Living in uncertain, complex, and volatile times is an invitation to dream, play, and act collectively. In this talk, Michelle will invite us into conversation and action to build bridges to more loving, restorative, and abundant futures with place and kin.

Michelle's origin story is rooted in being an Army Brat, child of an Ethiopian immigrant, and a middle school teacher for more than 22 years in public schools in Southwestern Pennsylvania. She learned and honed her craft at Jefferson Middle School in Mt. Lebanon for more than 16 years plus five years at The Environmental Charter School. Her current interests are in game-based-learning, design, justice, equity, the environment, community, and teacher empowerment. Through varied partnerships, she is seeking to co-create dynamic learning experiences and opportunities that inspire wonder, discovery, contradictions, frustrations, and joy.

These are just some of the conundrums Michelle currently contemplates: What do humans need to learn now? How might we create empathetic institutions that remind us of our humanity? How might we re-design for equity and social justice in and out of school learning? How might we design learning institutions to build connections? How might we allow those connections to help us re-see the worlds we inhabit? How might we embrace silence in our lives? How might we integrate our inner and outer environments as humans? How might we co-create the Beloved Community in this lifetime?

**21st Annual Research Symposium** | Tuesday, November 5 and Wednesday, November 6

## Research Symposium Special Sessions

These featured sessions are included with Research Symposium registration.



### Research Symposium Awards Reception Tuesday, November 5, 5:00–6:30 PM EST

Enjoy hors d'oeuvres and a cash bar while you network with colleagues, peruse the posters, and congratulate the recipient of the 2024 Research Award. Award presentation at 5:30 PM.



### Meeting of the Minds: Early Career Mentoring and Networking

Wednesday, November 6, 8:00–9:00 AM EST

Come join experienced EE researchers for informal mentoring over a light continental breakfast. Spend time in breakouts on a variety of topics, including publishing, time management, career planning, non-academic careers, and more.



### Journal Editors' Panel: Insights into Academic Publishing in the Fields of EE/ESE Wednesday, November 6, 10:00–11:00 AM

Editors of six EE/ESE journals will introduce their publications and share commentary on changes they're seeing within the publications landscape—AI, changing incentives for publishing among diverse academics, open access, and more. The session will include time for comments, questions, and discussion.



### Closing Plenary

Wednesday, November 6, 3:15–4:15 PM EST

In the closing session, we will hear from voices representing diverse perspectives within the EE research community, synthesizing their experiences at the Research Symposium and proposing directions for the future of our fields.



Pre-Research Symposium | Monday, November 4

## Pre-Research Symposium Networking Opportunities

Research Symposium attendees may add these events, which require advance registration by October 31, as space permits. For more information and pricing, visit [conference.naaee.org](http://conference.naaee.org).

### Frick Environmental Center Field Trip

Monday, November 4,  
1:00–5:00 PM EST

Experience two gems of Frick Park: Frick Environmental Center and the Fern Hollow Bridge and restoration area. The Living Building-certified Frick Environmental Center is one of the greenest public buildings in the world. Educators from the Pittsburgh Parks Conservancy will conduct a sustainability-focused tour of the building and grounds, followed by a hike through just a small portion of the Frick Park's 650 acres. The surrounding woodlands include extensive ecological restoration as well as the recently rebuilt Fern Hollow Bridge. Transportation is included. Check the conference website for more details.



### Steel City Fun Facts

Brush up on a little local trivia before you head to Pittsburgh. Pittsburgh has more bridges than any other city in the world (sorry Venice) coming in at a whopping 446. Possibly the city's most recognizable bridges are the Three Sisters Bridges, the only trio of identical bridges in the United States. The bridges cross the Allegheny River and connect Downtown and the North Shore. Each bridge was named in honor of an influential Pittsburgh resident including **Roberto Clemente** (6th Street Bridge), **Andy Warhol** (7th Street Bridge) and **Rachel Carson** (9th Street Bridge).

#### Famous Firsts:

- First newspaper west of the Alleghenies (1789) - The Pittsburgh Gazette
- First Ferris Wheel (1893)
- World's First Commercial Radio Station (1920) - KDKA
- First Ice Capades (1940)
- First All-Aluminum Building (1953) - Regional Enterprise Tower (formerly the Alcoa Building)
- First Polio Vaccine (1954) - Dr. Jonas Salk at the University of Pittsburgh
- First U.S. Public Television Station (1954) - WQED
- First Retractable Dome (1961) - Mellon Arena
- First Mass Transit Busway System (1964) - Pittsburgh Regional Transit (formerly Port Authority of Allegheny County)
- First Nighttime World Series Game (1971)
- First Robotics Center (1979)- Carnegie Mellon University Robotics Institute
- First Internet emoticon, the smiley :- ) (1982) - Carnegie Mellon University computer scientist Scott Fahlman

### Research Networking Dinner

Monday, November 4, 6:30–8:30 PM EST



Join other research symposium attendees for food, fun, and conversation at Condado Tacos, self-described as a place to come as you are, soak up the local vibe, and feel connected. Co-chairs Marijke Hecht and Kathayoon Khalil will be there to welcome everyone

and kick off two days of learning, sharing, and community-building. Registration is required due to a limitation on group size, but individuals will order off the regular menu and pay individually. Vegan and vegetarian options readily available.



**Pre-Conference** | Wednesday, November 6

## Pre-Conference Field Trips

Wednesday, November 6

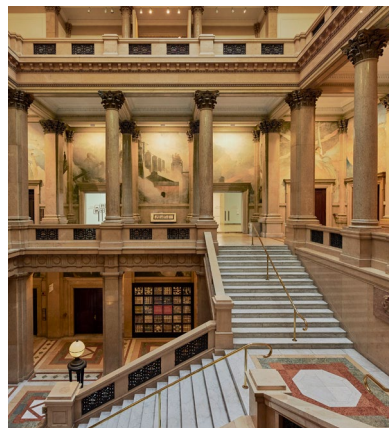
Field trips require advance registration and an additional fee. For more information and prices, visit the conference website. Space is limited and early registration is recommended. Registration closes on October 31.

All trips depart from the lobby entrance at the Westin Pittsburgh.

### Art and Nature at Fallingwater and Bear Run Nature Reserve

**8:30 AM–4:00 PM EST**

Journey 70 miles east of Pittsburgh to the Laurel Highlands of Southwestern Pennsylvania for a visit to Bear Run Nature Reserve, the flagship property of the Western Pennsylvania Conservancy, which provides the setting for Fallingwater, the internationally acclaimed house designed in 1935 by world-renowned architect Frank Lloyd Wright. Includes transportation, lunch, and entry fees.



### Behind-the-Scenes at Carnegie Museum of Natural History

**9:30 AM–4:30 PM EST**

Join staff from Carnegie Museum of Natural History for a behind-the-scenes look at how research, community partnerships, exhibitions and programs can examine the past and envision the future.

Explore iconic exhibits, visit seldom-seen scientific collections, talk honestly about ethical challenges in museums and test new ideas for visitor engagement. Includes transportation via public transit, lunch, and museum admission.



### Exploring Pittsburgh's Parks: Frick Environmental Center and Emerald View

**9:30 AM–3:30 PM EST**

Experience two gems of Pittsburgh's park system: Frick Environmental Center (morning) and Emerald View Park (afternoon). The Living Building-certified Frick Environmental Center is one of the greenest public buildings in the world. Emerald View Park offers glimpses of downtown Pittsburgh from a 2-mile loop winding around the hillsides of Mount Washington. Includes transportation and lunch.

### Haul from the Hollow: Hike and Bike Through Pittsburgh's Transformation

**9:00 AM–4:00 PM EST**

Experience Pittsburgh's industrial past and environmentally reclaimed present on a roughly 3-mile hike and 20-mile bike ride that visits an industrial site reclaimed by nature and spooky folklore, a rail trail that exemplifies Pittsburgh's transition from industry to livability, and a German brewery located at a recently developed, publicly accessible riverfront park. Includes transportation to the Hollow, morning snacks, and bike rental (with delivery, fitting, helmet, flat repair kits, and locks). Lunch at Hofbräuhaus will require an additional payment at the restaurant.





**Pre-Conference** | Wednesday, November 6

## Pre-Conference Workshops

Wednesday, November 6

Workshops require advance registration and an additional fee. For more information and prices, visit the conference website. Space is limited and early registration is recommended. Registration closes on October 31.



**Full Day, 8:30 AM–4:30 PM EST**

### Affiliate Workshop

Join leaders from across the NAAEE Affiliate Network as we gather to celebrate the great work of the Network, spend time learning from each other's challenges and successes and participate in two professional development sessions focused on emerging needs in our work.

### Centering Culture & Equity Through Community Engagement and Evaluation

Gain ideas and resources to design learning opportunities that uplift equity, varied identities, cultures, and communities. This interactive session interweaves NAAEE's *Community Engagement Guidelines* with culturally responsive, equitable evaluation through the eeVAL project. Some understanding of evaluation and justice is encouraged. Ideally, participants join as teams of two from an organization/community context.

**Morning Workshops, 8:30 AM–12:00 PM EST**

### Amplifying Youth Voices: Equity and Civic Engagement in Environmental Learning

Join this workshop to discover top tools for amplifying youth voices in environmental civic learning. Learn how to use criteria-based decision-making, democratic processes, and asset mapping to foster equity and empower marginalized communities. Equip yourself with the best strategies for meaningful youth engagement and impactful environmental civic action.

### Putting Your Best Foot Forward: Developing Skills for Networking Success

If you're feeling a healthy dose of nervous excitement about networking effectively in a post-pandemic world, you're not alone! You will build a bridge toward success in this fun and interactive workshop focused on peopling skills for young professionals that can be immediately applied at the NAAEE conference. This workshop is part of NAAEE's Young and Emerging Professionals Initiative and is sponsored by the Pennsylvania Association for Environmental Educators.

### Systems Thinking to Enhance Your EE Leadership

Join Compass Education for a session full of systems thinking tools and games to develop your EE leadership capacities. This session will provide educators of all kinds with resources to reflect, grow, and enhance their impact. Plus, you'll identify a learning or networking goal for the rest of the conference.

### Youth Mental Health in a Changing Climate: Keys to Resilience

Join environmental health experts and climate educators to bridge the gaps related to climate change and its impact on youth mental health. How can we equip our youth with mental and behavioral health tools for use during climate-related emergencies and how can our educators support these topics?



### Steel City (Not-So-Fun) Fact

The spotted lanternfly (SLF) is an invasive insect. It was first discovered in Pennsylvania in 2014 in Berks County, but has been identified in Allegheny County and within the City of Pittsburgh in 2020. It feeds on many trees, including fruit, ornamental, and woody ones. If you see one, destroy it!



**Pre-Conference** | Wednesday, November 6

**Pre-Conference Workshops continued**



**Afternoon Workshops, 1:00–4:30 PM EST**

**Bridging Wild Pedagogies to Environmental Education**

This workshop invites teachers and students to consider education differently through “Wild Pedagogies.” (Jickling, et al.) Discover how using the six Wild Pedagogies Touchstones challenges dominant paradigms of education while inspiring relational and ecological teaching and learning. We will embark together on reimagining, rethinking, and rewilding education.

**Creating Thriving Leaders, Creating Thriving Teams**

In this interactive workshop, participants will reflect on how they maintain their well-being and the well-being of the teams they are part of. They’ll receive a toolkit to help maintain their well-being and build thriving teams. They’ll leave the workshop with specific well-being-related goals and inspired to take action.

**Transformative Role Play Simulation for Negotiating Contentious Environmental Issues**

*Fire in the Forest* is an exciting and fast-moving interdisciplinary role play simulation where teams represent displaced farmers, indigenous tribespeople, a U.S. bank, environmental conservationists, government officials, intermediaries, and media. Participants are tasked with negotiating a solution among the widely divergent stakeholders.

**Using STEELS 3D Learning Science Practices: Connecting Nature to All**

Developing deeper observation skills is a helpful technique that supports NGSS and STEELS science practices as well as connecting folks to nature. This method increases access and equity as it requires few materials, is appropriate for folks with disabilities, and can be accomplished anywhere. This training was developed by Lawrence Hall of Science.

**Using the New Educating for Climate Action and Justice: Guidelines for Excellence**

Take a deep dive into the newly published *Educating for Climate Action and Justice: Guidelines for Excellence*—the newest member of the NAAEE’s Guidelines for Excellence Series. The guidelines are designed to assist educators in developing and implementing effective programs that focus on climate change, address injustice, and spark action.

Visit [conference@naaee.org](mailto:conference@naaee.org) for detailed workshop descriptions and prices.



**Whale of a Share-a-Thon**  
**Thursday, November 7,**  
**8:30–9:10 AM EST**

Dive into marine education resources at this special morning showcase, followed by a series of sessions that promote ocean and climate literacy.





## Special Events



Wednesday, November 6

### Opening Night!

**Reception: 5:00–6:30 PM EST**

**Welcome and Keynote: 6:30–8:30 PM EST**

Greet familiar friends and meet new colleagues at the opening reception for the conference. In addition to hors d'oeuvres and drinks, activities include the Share Fair, Authors' Corner, and, in keeping with Pittsburgh tradition, a cookie table! (You don't want to miss that!) Following the reception, NAAEE Executive Director Judy Braus will extend a warm welcome and we'll hear from our inspiring opening speakers, Gregg Behr and Ryan Ryzewski.

During the reception, the Share Fair showcases nonprofit organizations and their innovative programs via tabletop displays and engaging conversation. In the Authors' Corner, authors share their latest works and promote, sign, and sell their publications. To share your work, reserve tabletop display space through conference registration. Space is limited; reserve early.

Thursday, November 7

### Drawdown's Neighborhood

**5:30–7:00 PM EST**

Before you head out on Thursday evening, join Project Drawdown to celebrate Pittsburgh's climate success stories. Meet some of the local residents featured in Drawdown's Neighborhood, a documentary series that spotlights climate heroes who often go unheard. Learn about their pathways to becoming climate leaders and gather lessons to help your learners do the same.



Friday, November 8

### Closing Celebration at the Heinz History Center

**7:00–9:30 PM EST**

Celebrate the closing evening of the conference at the Smithsonian's home in Pittsburgh, the Heinz History Center—known as Pittsburgh's "people museum" and recently voted the #1 history museum in the United States in USA TODAY's Readers' Choice Awards. Among the six floors of exhibits are iconic artifacts such as the world's oldest jeep and the original TV set from the popular children's show *Mister Roger's Neighborhood*, which was filmed in Pittsburgh. Can you picture the friendly living room set or King Friday XIII's Castle? Enjoy hors d'oeuvres and beverages, great conversations, and inspiring stories of Western Pennsylvanians who have helped change the course of American history.



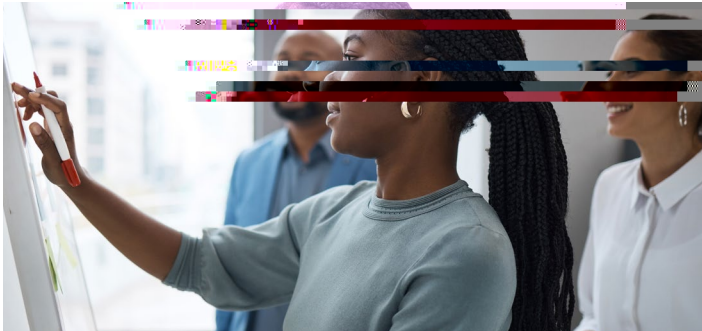




53rd Annual Conference | Wednesday, November 6 – Saturday, November 9

## Networking Opportunities

Check the conference website for more information on these opportunities. Details will be added as they become available.



### eePRO Group Meetings

Many eePRO Groups will meet at the conference during the Friday lunch break from 1:00–2:00 PM EST.



### Affinity Groups

The Environmental Professionals of Color (EPOC), the Queer Environmental Educators Network (QEEN), graduate students interested in early childhood environmental education, and others will be meeting during the conference and research symposium.

### Pittsburgh Pubs

Thursday, November 7  
7:15–10:00 PM EST

What better way to meet new colleagues than to spend your open evening networking over a few drinks? Sign up for Pittsburgh Pubs and visit three nearby nightspots to enjoy beer, a light dinner, and great conversations. The venues selected are local favorites. Must be 21 years of age to participate. Requires advance registration and additional fee.



## Welcome Young Professionals!

We have a series of activities and sessions planned especially for young and emerging professionals who may be attending their first conference or looking to build professional skills.



- YP Pre-Conference Workshop:** Putting Your Best Foot Forward: Developing Skills for Networking Success (Wednesday)
- YP Skill-Building Sessions:**
  - Setting Up Your Brand: Powerful Resumes and LinkedIn Profiles
  - Job Interviews: There's Only One Question to Answer!
- YP Coffee and Conversations:** Morning meet-ups at a nearby coffee shop (Thursday–Saturday)
- YP Conference Buddies:** Sign up through registration to pair with an experienced conference buddy to help navigate the conference



**53rd Annual Conference** | Wednesday, November 6 – Saturday, November 9

## Registration is Open!

Registration is open now. Please visit our [website](https://conference.naaee.org) for details and member and nonmember rates.

The conference and research symposium require separate registration fees. Workshops, field trips, and some special events are additional.



While NAAEE is a nonprofit organization dependent on registration fees to cover conference expenses, we do not want registration fees to be a barrier to participation. We offer discounted rates for members,

and students, retirees, and **those for whom rates pose a hardship may request reduced registration rates.**

Check for details on the conference [website](https://conference.naaee.org).

If you wish to contribute to our financial aid fund to help enable broader participation in the conference, you can do so through the registration process or by visiting our [website](https://conference.naaee.org).

## Scholarship Opportunities

NAAEE is accepting applications for four scholarship programs (young professionals, William B. Stapp student scholarships, rising leaders, and Pennsylvania academic scholarships) until August 7, with awards announced by the end of August.

## Want to Volunteer?

Attendees can save \$200 off full in-person conference registration by volunteering for eight hours over the course of the conference. Interested? Contact us at [conference@naaee.org](mailto:conference@naaee.org). Volunteer registration opens in late July; watch our website and social media for an announcement.

## Exhibit Fair

Strut your stuff! Share your resources and programs with conference attendees by purchasing an exhibit booth. Space is limited. For more information, visit our conference website.



## About NAAEE

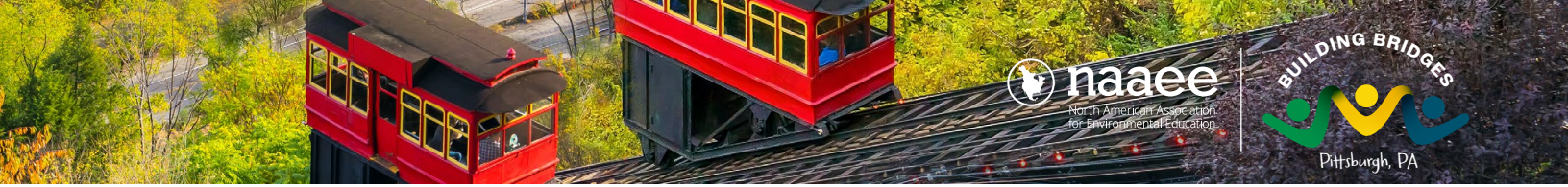
For more than five decades, NAAEE has served as the professional association, champion, and backbone organization for the field of environmental education. Dedicated to strengthening the field, we bring people together to accelerate environmental literacy and civic engagement through the power of education to create a more just, equitable, and sustainable future for all.

NAAEE's influence stretches across North America and around the world, with members in more than 30 countries. NAAEE and its 52 state, provincial, and regional Affiliate organizations in the United States, Canada, and Mexico have more than 20,000 members. Our members are professionals working across business, government, higher education, formal preK-12 education, nonformal education, science and STEM education, philanthropy, and other sectors of society.

Collaboration is one of our core values at NAAEE. It serves as the foundation of our mission and effectiveness to support the field. We work with dozens of partners—including state, local, federal, and international agencies and governments, corporations, foundations, and other nonprofits, and our expansive Affiliate Network—to strengthen the EE field and support professional development. Our signature initiatives—including the Global Environmental Education Partnership (GEEP), Natural Start Alliance, ee360+, eeBLUE, and Discover the Forest—thrive thanks to the vital support of our partners. Each organization uniquely strengthens our collective voice for environmental literacy. Learn more about our partners and the many ways we work together to drive excellence in the field of environmental education on our [website](https://conference.naaee.org).

## NAAEE

1250 24th Street NW, Suite 801, Washington, DC 20037  
[naaee.org](https://naaee.org)



For details and registration information: [conference.naaee.org](https://conference.naaee.org)

## Conference Venue



### Westin Pittsburgh

1000 Penn Avenue, Pittsburgh, PA 15222  
(412) 281-3700

### Housing

There is more information about conference housing on our website. Room blocks are limited; we recommend booking early.

**You must book by October 11 for special conference pricing, space permitting.**

NAAEE's primary room block, held at a special group rate, is at the Westin Pittsburgh. All sessions will be held at this venue.

Reservations are best made online:  
<https://www.marriott.com/event-reservations/reservation-link.mi?id=1718375811730&key=GRP&app=resvlink>

You may also call 1-800-288-3000 for assistance.

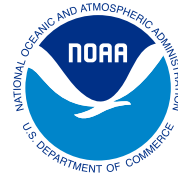
We hold a second, smaller room block at the Drury Plaza Hotel. The Drury is .2 miles from the Westin Pittsburgh, about a five-minute walk.

Drury Plaza Hotel—Pittsburgh Downtown  
745 Grant Street, Pittsburgh, PA 15219

Reservations can be made online:  
<https://www.druryhotels.com/bookandstay/newreservation/?groupno=10005920>

You may also call 1-800-325-0720 and refer to group number 10005920.

## Thank You to Our 2024 Conference Sponsors



Pisces Foundation



PLT is an initiative of SFI



ACORN NATURALISTS®

