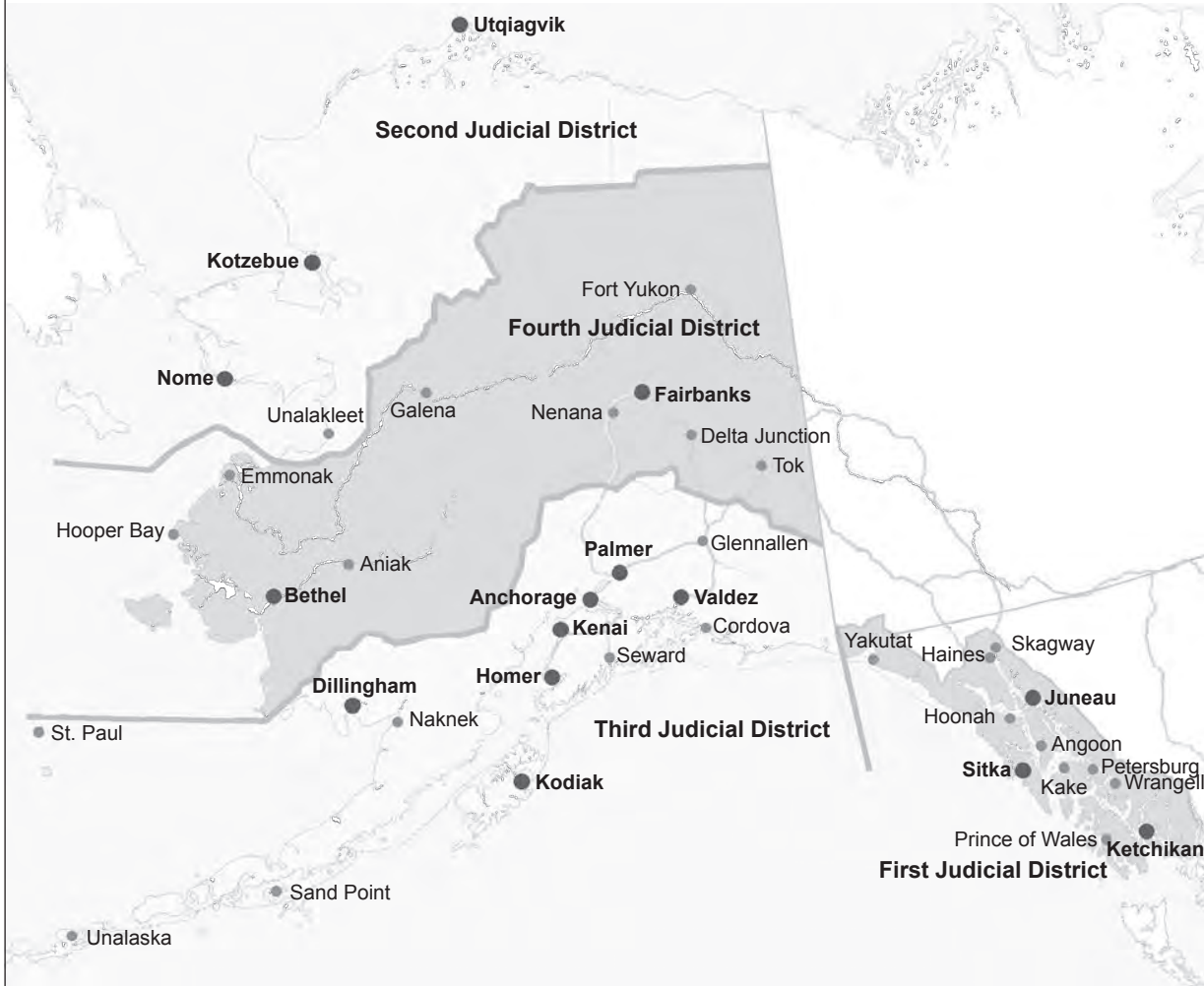




*Alaska Court System
Statistical Report FY 2024*

July 1, 2023 – June 30, 2024

Alaska Court Locations, FY 2024



Alaska Court System Statistical Report FY 2024

July 1, 2023 – June 30, 2024



© Copyright 2025 by the Alaska Court System.

Layout and compositing by Melissa S. Green, Field of Words, Anchorage, AK.

A bookmarked PDF version of this statistical report is available on the Alaska Court System website at <http://www.courts.alaska.gov/admin/index.htm#annualrep>.



Northwestern Fjord and Glacier, Kenai Fjords National Park (Third Judicial District)

Contents

<i>Alaska Court Locations, FY 2024 (map)</i>	<i>inside front cover</i>
Budgetary Overview	1
Figure A. Alaska Court System Budget within State of Alaska FY24 Operating Budget.....	2
Figure B. Alaska Court System Budget in Total Justice-Related Operating Budget, FY24	3
Appellate Courts	5
Supreme Court Activity	7
Filings.....	7
Dispositions.....	7
Pending Caseload	7
Time Required for Disposition of Cases.....	7
Court of Appeals Activity	7
Filings.....	7
Dispositions.....	8
Pending Caseload	8
Time Required for Disposition of Cases.....	8
Note for Researchers	8
Alaska Supreme Court	9
Table 1.01. Alaska Supreme Court — Case Filings & Dispositions, FY 2020–2024.....	9
Table 1.02. Alaska Supreme Court — Motions and Petitions for Rehearing, FY 2020–2024	9
Table 1.03. Alaska Supreme Court — Caseload Summary, FY 2024	9
Table 1.04. Alaska Supreme Court — Dispositions by Manner of Disposition, FY 2024	10
Table 1.05. Alaska Supreme Court — Status of Cases Pending End of Year, FY 2024	10
Table 1.06. Alaska Supreme Court — Time to Disposition, FY 2024.....	11
Alaska Court of Appeals	13
Table 2.01. Alaska Court of Appeals — Case Filings & Dispositions, FY 2020–2024	13
Table 2.02. Alaska Court of Appeals — Motions and Petitions for Rehearing, FY 2020–2024.....	13
Table 2.03. Alaska Court of Appeals — Caseload Summary, FY 2024	13
Table 2.04. Alaska Court of Appeals — Dispositions by Manner of Disposition, FY 2024	14
Table 2.05. Alaska Court of Appeals — Status of Cases Pending End of Year, FY 2024.....	14
Table 2.06. Alaska Court of Appeals — Time to Disposition, FY 2024.....	15
Statewide Trial Courts	17
Trial Court Activity	19
Filings.....	19
Dispositions.....	19
Explanatory Notes.....	19
Felony Filings.....	19
Criminal Case Categorization	19
Reopened Cases	19
Civil Protective Order Cases	20
Note for Researchers	20

Statewide Trial Courts	21
Table 3.01. Total Statewide Trial Court Case Filings FY24.....	21
Table 3.02. Population Trends by Court Site FY24.....	22
Table 3.03. Court Security Incidents: Summary Statistics FY24.....	23
Superior Court Activity.....	25
Table 4.01. Total Superior Court Case Filings FY22–FY24	27
Table 4.02. Total Superior Court Case Dispositions FY22–FY24	28
Figure 4.01. Superior Court Filing and Disposition Trends FY22–FY24.....	29
Table 4.03. Superior Court Clearance Rates FY23–FY24	30
Table 4.04. Superior Court Filings by Case Type FY24.....	31
Figure 4.02. Composition of Superior Court Filings FY24.....	32
Figure 4.03. Superior Court Filing Trends by Case Type FY22–FY24	33
Table 4.05. Superior Court Dispositions by Case Type FY24.....	34
Table 4.06. Felony Case Filings FY22–FY24	35
Table 4.07. Felony Filings by Case Type FY24	36
Table 4.08. Criminal Case Types FY24	37
Table 4.09. Felony Case Dispositions FY22–FY24.....	38
Table 4.10. Felony Case Dispositions by Manner of Disposition FY24	39
Table 4.11. Post-judgment Filings: Felony Petitions to Revoke Probation FY22–FY24	40
Table 4.12. Probate Case Filings FY22–FY24	41
Table 4.13. Probate Filings by Case Type FY24	42
Table 4.14. Probate Case Dispositions FY22–FY24	43
Table 4.15. Domestic Relations Case Filings FY22–FY24	44
Table 4.16. Domestic Relations Filings by Case Type FY24	45
Table 4.17. Domestic Relations Case Dispositions FY22–FY24	46
Table 4.18. Domestic Relations Case Dispositions by Manner of Disposition FY24.....	47
Table 4.19. Post-judgment Filings: Motions to Modify Custody, Support or Visitation FY22–FY24	48
Table 4.20. Superior Court General Civil Case Filings FY22–FY24	49
Table 4.21. Superior Court General Civil Filings by Case Type FY24	50
Table 4.22. Superior Court General Civil Case Types FY24	51
Table 4.23. Superior Court General Civil Case Dispositions FY22–FY24	52
Table 4.24. Superior Court General Civil Case Dispositions by Manner of Disposition FY24.....	53
Table 4.25. CINA Case Filings FY22–FY24.....	54
Table 4.26. Delinquency Case Filings FY22–FY24	55
Table 4.27. CINA and Delinquency Filings by Case Type FY24.....	56
District Court Activity.....	57
Table 5.01. Total District Court Case Filings FY22–FY24	59
Table 5.02. Total District Court Case Dispositions FY22–FY24	60
Figure 5.01. District Court Filing and Disposition Trends FY22–FY24.....	61
Table 5.03. District Court Clearance Rates FY23–FY24	62
Table 5.04. District Court Filings by Case Type FY24	63
Figure 5.02. Composition of District Court Case Filings FY24	64
Figure 5.03. District Court Filing Trends by Case Type FY22–FY24.....	65
Table 5.05. District Court Dispositions by Case Type FY24	66
Table 5.06. District Court Non-Minor Offense Case Filings FY22–FY24	67

Table 5.07. District Court Non-Minor Offense Case Dispositions FY22–FY2468

Table 5.08. Misdemeanor Case Filings FY22–FY2469

Table 5.09. Misdemeanor Filings by Case Type FY2470

Table 5.10. Criminal Case Types FY2471

Table 5.11. Misdemeanor Case Dispositions FY22–FY2472

Table 5.12. Misdemeanor Case Dispositions by Manner of Disposition FY2473

Table 5.13. Felony Filings in District Court FY22–FY2474

Table 5.14. Post-judgment Filings: Misdemeanor Petitions to Revoke Probation FY22–FY2475

Table 5.15. Small Claims Case Filings FY22–FY2476

Table 5.16. Small Claims Case Dispositions FY22–FY2477

Table 5.17. Small Claims Case Dispositions by Manner of Disposition FY2478

Table 5.18. Civil Protective Order Case Filings FY22–FY2479

Table 5.19. Civil Protective Order Case Dispositions FY22–FY2480

Table 5.20. District Court General Civil Case Filings FY22–FY2481

Table 5.21. District Court General Civil Filings by Case Type FY2482

Table 5.22. District Court General Civil Case Dispositions FY22–FY2483

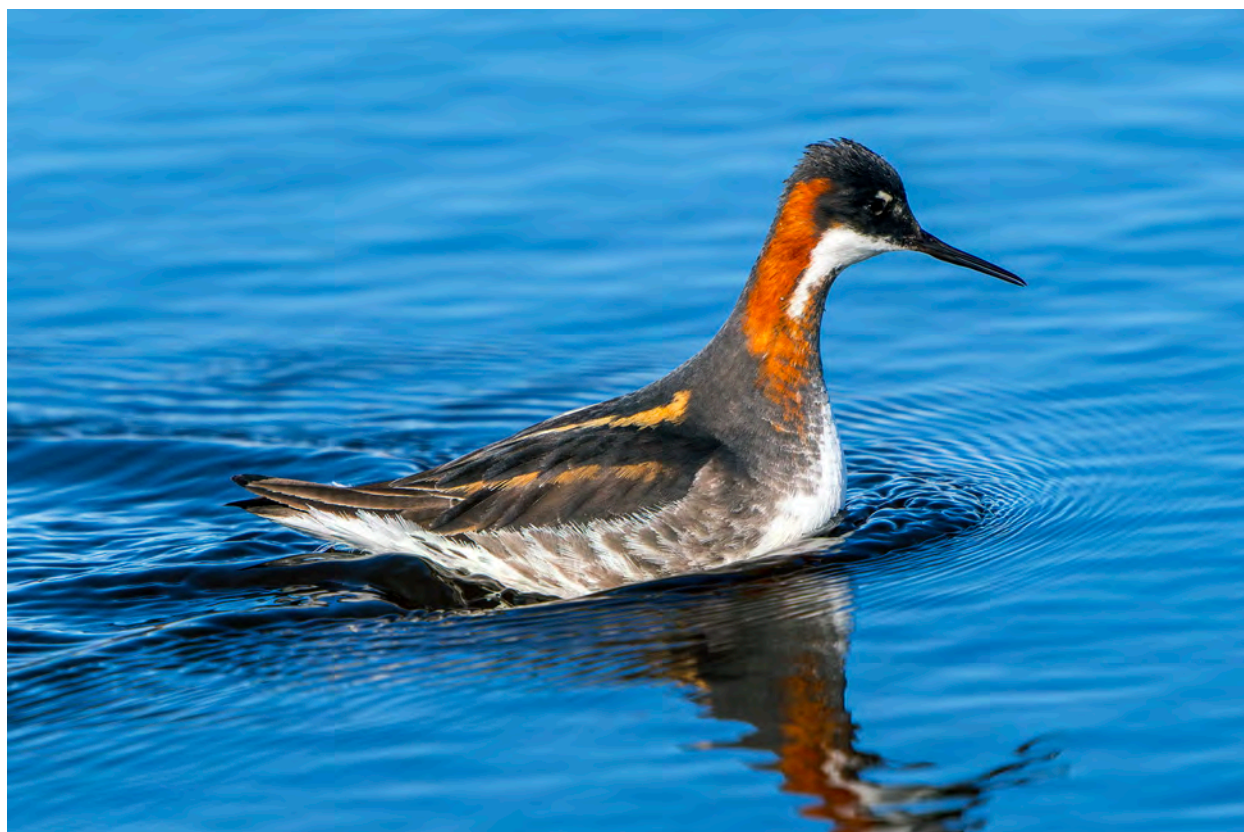
Table 5.23. District Court General Civil Case Dispositions by Manner of Disposition FY2484

Table 5.24. Minor Offense Case Dispositions FY22–FY2485

Table 5.25. Minor Offense Case Dispositions by Case Type FY2486

Table 5.26. Minor Offense Case Types FY2487

Photo Permissions.....inside back cover



Red-necked phalarope, Nome (Second Judicial District)



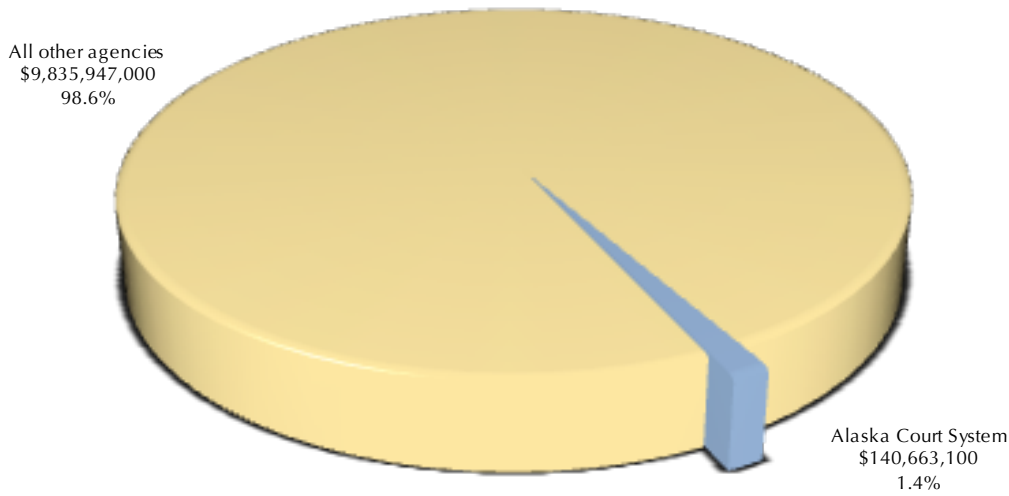
Sukakpak Mountain in July, Brooks Range (Fourth Judicial District)

Budgetary Overview



Sukakpak Mountain in September, Brooks Range (Fourth Judicial District)

Figure A. Alaska Court System Budget within State of Alaska FY24 Operating Budget



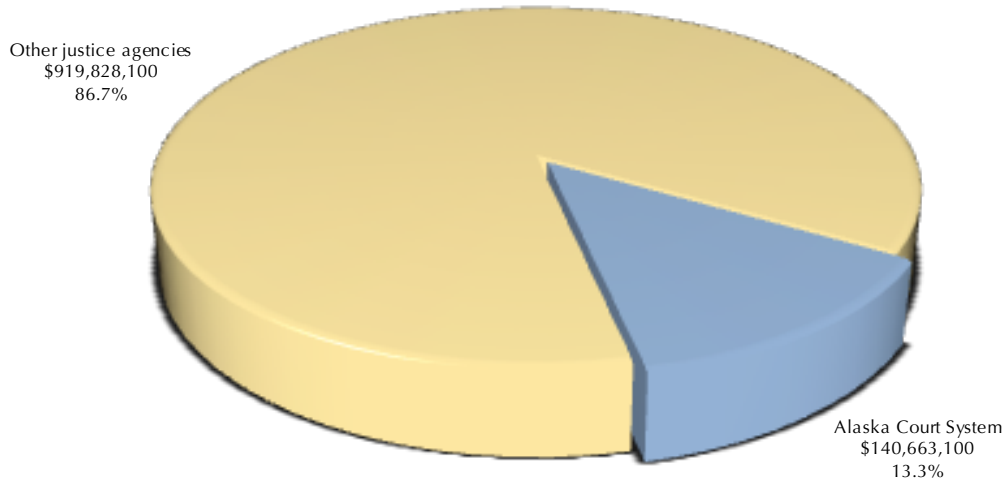
FY24 State of Alaska Operating Budget by Agency

Agency	Amount	Percentage of budget
Alaska Court System*	\$140,663,100	1.4 %
Alaska Legislature	\$81,001,500	0.8
Department of Administration	\$320,521,300	3.2
Department of Commerce, Community and Economic Development	\$219,443,100	2.2
Department of Corrections	\$420,638,200	4.2
Department of Education and Early Development	\$1,751,499,900	17.6
Department of Environmental Conservation	\$109,900,900	1.1
Department of Family and Community Services	\$459,054,300	4.6
Department of Fish and Game	\$242,902,400	2.4
Department of Health	\$3,212,786,900	32.2
Department of Labor and Workforce Development	\$164,702,700	1.7
Department of Law	\$112,616,900	1.1
Department of Military and Veteran Affairs	\$61,405,600	0.6
Department of Natural Resources	\$196,767,500	2.0
Department of Public Safety	\$307,071,500	3.1
Department of Revenue	\$490,153,400	4.9
Department of Transportation and Public Facilities	\$770,056,700	7.7
Office of the Governor	\$30,651,400	0.3
University of Alaska	\$884,772,800	8.9
Executive Branch-wide appropriations	\$0	0.0
Total	\$9,976,610,100	100.0 %

Note: These budget charts reflect the enacted FY 2024 operating budgets for the given agencies.

* Alaska Court System budget figure includes Alaska Judicial Council and Alaska Commission on Judicial Conduct.

Figure B. Alaska Court System Budget in Total Justice-Related Operating Budget, FY24



FY24 Alaska Justice Agencies Operating Budgets

Agency	Amount	Percentage of budget
Alaska Court System*	\$140,663,100	13.3 %
Department of Corrections	\$420,638,200	39.7
Department of Law	\$112,616,900	10.6
Department of Public Safety	\$307,071,500	29.0
Public Defender Agency	\$41,173,200	3.9
Office of Public Advocacy	\$38,328,300	3.6
Total	\$1,060,491,200	100.0 %

* Alaska Court System budget figure includes Alaska Judicial Council and Alaska Commission on Judicial Conduct.

Source of data: Alaska Legislative Finance Division: 2023 Legislature — Operating Budget Allocation Summary — Enacted Structure (12 Oct 2023)
<https://www.legfin.akleg.gov/BudgetReports/LY2023/Operating/Enacted/AgencySummary.pdf>
<https://www.legfin.akleg.gov/BudgetReports/LY2023/Operating/Enacted/DOA-AllocationSummary.pdf>



Oxbow lake on the Iditarod National Historic Trail between Kaltag and Unalakleet (Second Judicial District)



Bald eagle feather in the rain, Juneau (First Judicial District)



Brown bear sow and cubs, Katmai National Park (Third Judicial District)

Appellate Courts

Supreme Court Activity

Filings

During FY 2024, 361 cases were filed in the Supreme Court, a 19 percent increase from the total filed in FY 2023. The number of civil appeals filed was up 2 percent from the previous year; petitions for hearing increased remained the same; and petitions for review increased by 13 percent. The category that includes bar matters, federal certification matters, and original applications increased 157 percent from the previous year. For details about filings in various categories of cases from FY 2020 through FY 2024, see page 9.

Dispositions

The Supreme Court disposed of 334 cases in FY 2024, a 4 percent increase from FY 2023. The court issued 38 full opinions, 60 MO&Js, and 2 published orders. For details about dispositions by case type in FY 2024, see page 10. For comparisons of dispositions by case type from FY 2020 through FY 2024, see page 9.

Pending Caseload

On June 30, 2024, 323 cases were pending, a 12 percent increase from the end of FY 2023. Of these pending cases, 52 percent were at a stage prior to submission to the court (filing pending, awaiting settlement conference, awaiting record or transcripts, awaiting briefs, awaiting argument or conference, or awaiting response to a petition). Five percent were stayed or were awaiting rehearing or record return prior to closing, and the remaining 43 percent were under advisement (submitted to the court but awaiting circulation of a draft opinion, publication of an opinion, or decision on a petition). For a comparison of cases pending at year's end according to case type from FY 2020 through FY 2024, see page 9. For the status of cases pending at the end of FY 2024 according to case type, see page 10.

Time Required for Disposition of Cases

In 50 percent of appeals decided by opinion or MO&J, the time from submission (usually the date of oral argument or conference on the briefs) to publication of a decision was 7.0 months or less. For petitions, bar matters, and original applications, 50 percent were completed (from opening to closing) in 2.2 months or less. Additional information about time to disposition can be found at page 11.

Court of Appeals Activity

Filings

During FY 2024, 235 cases were filed in the Court of Appeals, a 19 percent increase from the total filed in FY 2023. Merit appeal filings increased by 14 percent from the previous year, while sentence appeal filings increased 30 percent. Petition for review and petition for hearing filings increased by 17 percent, and original application and bail appeal filings increased by 100 percent from FY 2023. For a comparison of filings in various case categories from FY 2020 through FY 2024, see page 13.

Dispositions

The Court of Appeals disposed of 212 cases in FY 2024. This was a 5 percent decrease from FY 2023. The court issued 31 full opinions and 100 memorandum opinions and summary dispositions. For details about the types and caseload composition of dispositions in FY 2024, see page 13. For comparisons of dispositions by case type from FY 2020 through FY 2024, see page 13.

Pending Caseload

On June 30, 2024, 401 cases were pending before the Court of Appeals. Of these cases, 72 percent were at a stage prior to submission to the court (filing pending, awaiting record, awaiting briefing, awaiting oral argument, or awaiting response to a petition). Six percent were awaiting rehearing or record return prior to closing; 4 percent were stayed or remanded; and the remaining 18 percent were under advisement (submitted to the court but awaiting circulation of a draft opinion, publication of an opinion, or a decision on a petition). For a comparison of cases pending at year's end according to case type from FY 2020 through FY 2024, see page 13. For the status of cases pending at the end of FY 2024 according to case type, see page 14.

Time Required for Disposition of Cases

In 50 percent of appeals decided by opinion or MO&J, the time from submission (usually the date of oral argument or conference on the briefs) to publication of a decision was 3.2 months or less. Fifty percent of petitions and original applications were completed (from opening to closing) in 1.1 months or less. Additional information about time to disposition can be found at page 15.

Note for Researchers

Readers and researchers should be aware that occasional changes in the manner in which cases are reported or recorded by the Alaska Court System may account for some changes over time in case filing totals for specific courts or jurisdictions. While the court system attempts to make the data tables in the annual report as consistent as possible from year to year, care is necessary, especially when discerning trends or making comparisons between time periods.

Alaska Supreme Court

**Table 1.01. Alaska Supreme Court — Case Filings & Dispositions,
FY 2020–2024**

	FY20	FY21	FY22	FY23	FY24
Filings					
Civil appeals	197	171	192	169	209
Petitions for hearing	70	61	78	80	80
Petitions for review	27	58	53	48	54
Bar/original applications	14	11	13	7	18
Total	308	301	336	304	361
Dispositions					
Civil appeals	188	186	169	177	180
Petitions for hearing	88	67	66	79	87
Petitions for review	24	50	57	59	55
Bar/original applications	18	11	18	6	12
Total	318	314	310	321	334
Published					
Full opinions	83	77	66	65	38
Memorandum opinions	48	60	70	72	60
Published orders	5	3	2	2	2
Total	136	140	138	139	102
Pending end-of-year					
Civil appeals	241	227	245	241	272
Petitions for hearing	23	14	25	32	28
Petitions for review	15	24	17	13	14
Bar/original applications	6	7	1	3	9
Total	285	272	288	289	323

**Table 1.02. Alaska Supreme Court — Motions and Petitions for Rehearing,
FY 2020–2024**

	FY20	FY21	FY22	FY23	FY24
Filings					
Petitions for rehearing	27	30	24	22	23
Full court motions	58	62	48	49	47
Individual justice motions	880	799	886	835	565
Routine (clerk) motions	490	503	468	608	648
Total	1,455	1,394	1,426	1,514	1,283
Dispositions					
Petitions for rehearing	27	29	23	18	26
Full court motions	59	65	50	44	52
Individual justice motions	928	804	890	825	594
Routine (clerk) motions	487	509	458	618	651
Total	1,501	1,407	1,421	1,505	1,323
Pending end-of-year					
Petitions for rehearing	2	1	2	6	2
Full court motions	3	2	1	5	2
Individual justice motions	43	29	19	30	28
Routine (clerk) motions	13	9	18	10	14
Total	61	41	40	51	46

Table 1.03. Alaska Supreme Court — Caseload Summary, FY 2024

	Civil appeals	Petitions for hearing	Petitions for review	Bar/original applications	Total
Pending beginning of year	242	33	13	3	291
Filings	209	80	54	18	361
Dispositions	180	87	55	12	334
Pending end of year	272	28	14	9	323

Table 1.04. Alaska Supreme Court — Dispositions by Manner of Disposition, FY 2024

	Civil appeals	Petitions for hearing	Petitions for review	Bar/ original application/ federal certified questions	Total all cases
Dispositions by published opinions					
Affirmed	21	1	0	0	22
Reversed or vacated	10	1	0	0	11
Affirmed in part/reversed in part	7	0	0	0	7
Other (dismissed, etc.)	0	0	0	0	0
Total	38	2	0	0	40
Summary dispositions on merits (memorandum opinions & summary orders)					
Affirmed	50	0	1	1	52
Reversed or vacated	7	0	0	0	7
Affirmed in part/Reversed in part	2	0	0	0	2
Other (dismissed, etc.)	1	0	0	0	1
Total	60	0	1	1	62
Petitions/applications granted		0	5	5	10
Total dispositions on merits	98	2	1	1	102
Petition denials/orders not on merits	29	74	44	9	156
Dismissals					
Stipulated to or by Appellant	34	4	4	0	42
On Motion of Appellee	1	0	0	0	1
<i>Sua Sponte</i> *	18	7	6	2	33
Total dispositions not on merits	82	85	54	11	232
Total dispositions	180	87	55	12	334

* *Sua Sponte* means orders issued by the court without motion by a party.

Table 1.05. Alaska Supreme Court — Status of Cases Pending End of Year, FY 2024

	Civil appeals	Petitions for hearing	Petitions for review	Bar/ original application/ federal certified questions	Total all cases
Filing pending	3	1	1	1	6
Awaiting settlement conference	0	0	0	0	0
Awaiting records/transcript	52	0	1	0	53
Awaiting briefs	61	4	1	0	66
Awaiting argument/conference	33	3	1	1	38
Awaiting draft opinion	72	0	3	3	78
Draft opinion circulating	38	2	2	0	42
Awaiting petition response	0	5	0	1	6
Awaiting petition decision	0	11	4	3	18
Awaiting rehearing/record return	6	0	0	0	6
Stayed or remanded	7	2	1	0	10
Total	272	28	14	9	323

Table 1.06. Alaska Supreme Court — Time to Disposition, FY 2024

Appeals decided by opinion or memorandum opinion & judgment (MO&J)*				Petitions, bar matters, original applications***			
	Percentile	Days	Months		Percentile	Days	Months
Pre-submission to Court				File open — file closed			
Notice of appeal to record certification	50%	35	1.2	50%	67	2.2	
	75%	42	1.4	75%	104	3.5	
	90%	50	1.7	90%	136	4.5	
Record certification to last brief	50%	163	5.4	*** This includes all petitions, bar matters, and original applications closed during the FY, whether by regular order or dismissal, except those that were granted and thereafter went through the full briefing process, ending in an opinion.			
	75%	244	8.1				
	90%	330	11.0				
Last brief to submission**	50%	85	2.8				
	75%	137	4.6				
	90%	219	7.3				
Subtotal: Number of days/month before submission to the court	50%	298	9.9				
	75%	426	14.2				
	90%	582	19.4				
Submission to publication							
Submission to circulation of draft opinion or recommendation	50%	128	4.3				
	75%	168	5.6				
	90%	182	6.1				
Circulation of draft opinion or recommendation to publication	50%	84	2.8				
	75%	141	4.7				
	90%	174	5.8				
Subtotal: Number of days/months from submission to publication	50%	211	7.0				
	75%	286	9.5				
	90%	326	10.9				
Post-publication motions							
Publication to closing	50%	16	0.5				
	75%	22	0.7				
	90%	48	1.6				
Total time from open to close							
	50%	532	17.7				
	75%	717	23.9				
	90%	902	30.1				

* This includes appeals closed during the FY that resulted in a published opinion or memorandum opinion & judgment; appeals that ended by dismissal or other closure are not included.

** "Submission" is usually the date of oral argument or conference on the case, but can be later in circumstances such as reassignment to a different chambers, or reconference by the court.

Alaska Court of Appeals

Table 2.01. Alaska Court of Appeals — Case Filings & Dispositions, FY 2020–2024

	FY20	FY21	FY22	FY23	FY24
Filings					
Merit appeals	177	109	88	140	160
Sentence appeals	15	12	15	20	26
Petitions	25	35	46	30	35
Original applications/bail appeals	11	12	9	7	14
Total	228	168	158	197	235
Dispositions					
Merit appeals	236	189	190	163	142
Sentence appeals	28	27	18	10	18
Petitions	25	26	43	41	36
Original applications/bail appeals	13	11	11	8	16
Total	302	253	262	222	212
Published					
Full opinions	19	37	22	26	31
Memorandum opinions*	165	139	139	102	100
Published orders	2	0	0	0	0
Total	186	176	161	128	131
Pending end-of-year					
Merit appeals	513	441	340	323	341
Sentence appeals	43	26	26	38	48
Petitions	12	20	23	13	11
Original applications/bail appeals	4	4	3	2	1
Total	572	491	392	376	401

*This number includes summary dispositions, which the court started issuing in March 2019.

Table 2.02. Alaska Court of Appeals — Motions and Petitions for Rehearing, FY 2020–2024

	FY20	FY21	FY22	FY23	FY24
Filings					
Petitions for rehearing	7	16	28	16	16
Full court motions	149	160	173	99	98
Individual judge motions	497	447	37	52	111
Routine (clerk) motions	664	640	386	780	833
Total	1,317	1,263	624	947	1,058
Dispositions					
Petitions for rehearing	11	14	25	18	15
Full court motions	144	162	175	103	100
Individual judge motions	515	484	36	55	110
Routine (clerk) motions	695	651	991	789	848
Total	1,365	1,311	1,227	965	1,073
Pending end-of-year					
Petitions for rehearing	0	1	3	2	2
Full court motions	11	9	9	7	6
Individual judge motions	45	18	3	4	5
Routine (clerk) motions	26	14	14	23	22
Total	82	42	29	36	35

Table 2.03. Alaska Court of Appeals — Caseload Summary, FY 2024

	Merit appeals	Sentence appeals	Petitions	Bail appeals/ original applications	Total
Pending beginning of year	325	40	11	3	379
Filings	160	26	35	14	235
Dispositions	142	18	36	16	212
Pending end of year	341	48	11	1	401

Table 2.04. Alaska Court of Appeals — Dispositions by Manner of Disposition, FY 2024

	Merit appeals	Sentence appeals	Petitions	Bail appeals/ original applications	Total
Dispositions by published opinions					
Affirmed	11	2	1	0	14
Reversed or vacated	7	0	1	0	8
Affirmed in part/reversed in part	3	1	2	0	6
Other (dismissed, etc.)	1	1	1	0	3
Total	22	4	5	0	31
Summary dispositions on merits (memorandum opinions, summary dispositions, and final unpublished orders on the merits)					
Affirmed	74	10	0	0	84
Reversed or vacated	7	1	0	0	8
Affirmed in part/Reversed in part	4	0	0	0	4
Other (dismissed, etc.)	3	1	0	0	4
Total	88	12	0	0	100
Petitions/applications granted			6	0	6
Total dispositions on merits	110	16	5	0	131
Petition denials/orders not on merits	6		20	13	39
Dismissals					
Stipulated to or by appellant	21	2	8	1	32
On motion of appellee	0	0	1	0	1
<i>Sua Sponte</i> *	5	0	2	2	9
Total dispositions not on merits	32	2	31	16	81
Total dispositions	142	18	36	16	212

* *Sua Sponte* means orders issued by the court without motion by a party.

Table 2.05. Alaska Court of Appeals — Status of Cases Pending End of Year, FY 2024

	Merit appeals	Sentence appeals	Petitions	Bail appeals/ original applications	Total
Filing pending	4	0	0	0	4
Awaiting records/transcript	102	12	0	0	114
Briefing stage	127	20	0	1	148
Awaiting argument/conference	18	2	2	0	22
Awaiting draft opinion	17	5	0	0	22
Draft opinion circulating	40	5	1	0	46
Awaiting petition response	0	0	2	0	2
Awaiting petition decision	0	0	3	0	3
Awaiting rehearing/record return	18	4	3	0	25
Stayed or remanded	15	0	0	0	15
Total	341	48	11	1	401

Table 2.06. Alaska Court of Appeals — Time to Disposition, FY 2024

Appeals decided by opinion or memorandum opinion & judgment (MO&J)*				Petitions and original applications***			
	Percentile	Days	Months		Percentile	Days	Months
Pre-submission to Court				File open — file closed			
Notice of appeal to record certification	50%	41	1.4	50%	32	1.1	
	75%	54	1.8	75%	58	1.9	
	90%	135	4.5	90%	133	4.4	
Record certification to last brief	50%	673	22.4	*** This includes all petitions and original applications closed during the FY, whether by regular order or dismissal, except those that were granted and thereafter went through the full briefing process, ending in an opinion.			
	75%	803	26.8				
	90%	947	31.6				
Last brief to submission**	50%	109	3.6				
	75%	226	7.5				
	90%	491	16.4				
Subtotal: Number of days/month before submission to the court	50%	890	29.7				
	75%	1,098	36.6				
	90%	1,424	47.5				
Submission to publication							
Submission to circulation of draft opinion or recommendation	50%	54	1.8				
	75%	166	5.5				
	90%	296	9.9				
Circulation of draft opinion or recommendation to publication	50%	37	1.2				
	75%	86	2.9				
	90%	316	10.5				
Subtotal: Number of days/months from submission to publication	50%	97	3.2				
	75%	316	10.5				
	90%	648	21.6				
Post-publication motions							
Publication to closing	50%	33	1.1				
	75%	36	1.2				
	90%	41	1.4				
Total time from open to close							
	50%	1,112	37.1				
	75%	1,463	48.8				
	90%	1,965	65.5				

* This includes appeals closed during the FY that resulted in a published opinion or memorandum opinion & judgment; appeals that ended by dismissal or other closure are not included.

** "Submission" is usually the date of oral argument or conference on the case, but can be later in circumstances such as reassignment to a different chambers, or reconference by the court.



Hiking trail, Glacier Bay National Park and Preserve (First Judicial District)



*Statewide
Trial Courts*

Fish eggs, Agiak Lake, Gates of the Arctic (Second Judicial District)



Alaska Range, Denali National Park and Preserve (Fourth Judicial District)

Statewide Trial Courts

Trial Court Activity

Filings

During FY24, 92,719 cases were filed in the trial courts, an increase of 0.8 percent from 91,953 filings in FY23.

The FY24 Superior Court filings were 20,637, a decrease of 3.4 percent from 21,365 filings in FY23. Felony filings decreased by 6.4 percent, probate decreased by 6.2 percent, CINA filings decreased by 3.2 percent, and domestic relations filings decreased by 0.1 percent. Delinquency filings increased by 13.7 percent, and general civil filings increased by 3.4 percent.

The FY24 District Court filings were 72,082, an increase of 2.1 percent from 70,588 filings in FY23. General civil filings increased 18.6 percent, small claims filings increased 15.9 percent, Minor offense filings increased 3.0 percent, and civil protective order filings increased 1.6 percent. Misdemeanor filings decreased 7.3 percent.

Dispositions

The trial courts disposed of 94,509 cases in FY24, an increase of 1.2 percent from the 93,369 dispositions reported in FY23. To avoid a backlog of cases awaiting disposition, courts aspire to have a clearance rate of 100 percent or higher, meaning that they have cleared (i.e., disposed of) at least as many cases as were filed during the period. The clearance rate for trial court cases was 101.9 percent in FY24.

Explanatory Notes

Felony Filings

Most felony cases are initiated in District Court and then transferred to Superior Court after indictment by a grand jury or the filing of an information. Since most of the activity in a felony case typically occurs in the Superior Court, felony cases are reported as Superior Court filings regardless of whether they were initiated in District Court or in the Superior Court. A table showing the number of felony cases initiated in the District Court is provided for informational purposes (Table 5.13, page 74). To avoid double counting, these filings are not included in the District Court filing totals, but should be considered when evaluating the **workload** of a District Court.

Criminal Case Categorization

Criminal cases are categorized based on the most serious charge at filing. For example, if a defendant is charged with a felony and two misdemeanors, the case is counted as a felony. If the felony charge is subsequently reduced to a misdemeanor, the case type does not change; the case is still categorized as a felony for reporting purposes.

Reopened Cases

The criminal filing statistics in this report include only new case filings and do not include petitions to revoke probation or other proceedings that cause the court to reopen a criminal case. Likewise, the

domestic relations filing statistics include only new case filings and do not include post-judgment motions to modify custody, support or visitation. Because this post-judgment activity significantly impacts the trial court workload, tables showing this activity are provided for informational purposes. The number of petitions to revoke probation in felony and misdemeanor cases can be found in Tables 4.11 and 5.14 (pages 40 and 75). The number of filings of motions to modify custody, support, or visitation can be found in Table 4.19 (page 48).

Civil Protective Order Cases

The civil protective order case group includes petitions for domestic violence, stalking, and sexual assault protective orders. These cases may be filed in either District or Superior Court, but District Courts handle the vast majority. Because readers and researchers often want to know the total number of civil protective order cases that were filed, domestic violence, stalking, and sexual assault protective order cases filed in the Superior Court are counted with the District Court cases.

Note for Researchers

Readers and researchers should be aware that occasional changes in the manner in which cases are reported or recorded by the Alaska Court System may account for some changes over time in case filing totals for specific courts or jurisdictions. While the court system attempts to make the data tables in the annual report as consistent as possible from year to year, care is necessary, especially when discerning trends or making comparisons between time periods.

Statewide Trial Courts

**Table 3.01. Total Statewide Trial Court Case Filings
FY 24**

Court	Superior Court		District Court				Total	
	Filings	% of Superior Court total	Non-minor offense filings	Minor offense filings	Total filings	% of District Court total	Filings	% of statewide total
Anchorage	9,271	44.9%	14,776	15,416	30,192	41.9%	39,463	42.6%
Anagoon	4	0.0%	9	0	9	0.0%	13	0.0%
Aniak	53	0.3%	52	20	72	0.1%	125	0.1%
Bethel	710	3.5%	958	218	1,176	1.6%	1,886	2.0%
Cordova	41	0.2%	60	68	128	0.2%	169	0.2%
Delta Junction	48	0.2%	96	437	533	0.7%	581	0.6%
Dillingham	235	1.1%	303	126	429	0.6%	664	0.7%
Emmonak	68	0.3%	94	2	96	0.1%	164	0.2%
Fairbanks	2,319	11.2%	3,888	4,806	8,694	12.1%	11,013	11.9%
Fort Yukon	12	0.1%	37	1	38	0.1%	50	0.1%
Galena	13	0.1%	20	3	23	0.0%	36	0.0%
Glennallen	51	0.3%	102	193	295	0.4%	346	0.4%
Haines	8	0.0%	58	77	135	0.2%	143	0.2%
Homer	365	1.8%	647	1,179	1,826	2.5%	2,191	2.4%
Hoonah	5	0.0%	35	7	42	0.1%	47	0.1%
Hooper Bay	51	0.3%	67	0	67	0.1%	118	0.1%
Juneau	909	4.4%	1,694	1,148	2,842	3.9%	3,751	4.0%
Kenai	1,161	5.6%	1,862	2,701	4,563	6.3%	5,724	6.2%
Ketchikan	552	2.7%	1,025	360	1,385	1.9%	1,937	2.1%
Kodiak	235	1.1%	412	619	1,031	1.4%	1,266	1.4%
Kotzebue	341	1.7%	438	80	518	0.7%	859	0.9%
Naknek	44	0.2%	157	62	219	0.3%	263	0.3%
Nenana	30	0.2%	114	1,880	1,994	2.8%	2,024	2.2%
Nome	337	1.6%	659	184	843	1.2%	1,180	1.3%
Palmer	2,652	12.9%	4,530	5,413	9,943	13.8%	12,595	13.6%
Petersburg	74	0.4%	100	96	196	0.3%	270	0.3%
Prince of Wales	88	0.4%	208	228	436	0.6%	524	0.6%
Sand Point	11	0.1%	36	16	52	0.1%	63	0.1%
Seward	131	0.6%	252	1,233	1,485	2.1%	1,616	1.7%
Sitka	205	1.0%	272	216	488	0.7%	693	0.7%
Skagway	1	0.0%	20	13	33	0.1%	34	0.0%
St. Mary's ¹	44	0.2%	74	1	75	0.1%	119	0.1%
St. Paul	6	0.0%	0	0	0	0.0%	6	0.0%
Tok	59	0.3%	122	681	803	1.1%	862	0.9%
Unalakleet	60	0.3%	92	1	93	0.1%	153	0.2%
Unalaska	26	0.1%	80	239	319	0.4%	345	0.4%
Utqiagvik	294	1.4%	407	86	493	0.7%	787	0.8%
Valdez	70	0.3%	203	147	350	0.5%	420	0.4%
Wrangell	48	0.2%	65	72	137	0.2%	185	0.2%
Yakutat	5	0.0%	22	7	29	0.0%	34	0.0%
Total	20,637	100.0%	34,046	38,036	72,082	100.0%	92,719	100.0%
1st District	1,899	9.2%	3,508	2,224	5,732	8.0%	7,631	8.2%
2nd District	1,032	5.0%	1,596	351	1,947	2.7%	2,979	3.2%
3rd District	14,299	69.3%	23,420	27,412	50,832	70.5%	65,131	70.3%
4th District	3,407	16.5%	5,522	8,049	13,571	18.8%	16,978	18.3%

1. St. Mary's court closed in 2016. Records for filings from the venue are still maintained separately.

**Table 3.02. Population Trends by Court Site
FY 24**

Court	Population served by court site*			Change 2010–2023		Change 2020–2023		% of statewide total
	2010	2020	2023	Number	Percent	Number	Percent	
Anchorage	292,256	291,695	290,090	-2,166	-0.7%	-1,605	-0.6%	39.4%
Angoon	459	357	343	-116	-25.3%	-14	-3.9%	0.0%
Aniak	1,948	2,410	2,152	204	10.5%	-258	-10.7%	0.3%
Bethel	15,605	17,288	16,979	1,374	8.8%	-309	-1.8%	2.3%
Chevak ¹	1,421	Served by Hooper Bay		N/S	N/S	N/S	N/S	N/S
Cordova	2,239	2,609	2,540	301	13.4%	-69	-2.6%	0.3%
Delta Junction	5,017	4,833	5,004	-13	-0.3%	171	3.5%	0.7%
Dillingham	4,847	4,857	4,565	-282	-5.8%	-292	-6.0%	0.6%
Emmonak	2,203	2,453	2,413	210	9.5%	-40	-1.6%	0.3%
Fairbanks	97,781	95,812	96,127	-1,654	-1.7%	315	0.3%	13.0%
Fort Yukon	1,165	960	973	-192	-16.5%	13	1.4%	0.1%
Galena	1,461	1,410	1,350	-111	-7.6%	-60	-4.3%	0.2%
Glennallen	3,037	2,617	2,667	-370	-12.2%	50	1.9%	0.4%
Haines	2,591	2,127	2,593	2	0.1%	466	21.9%	0.4%
Homer	13,899	15,214	16,093	2,194	15.8%	879	5.8%	2.2%
Hoonah ²	914	1,839	1,764	850	93.0%	-75	-4.1%	0.2%
Hooper Bay	1,112	3,047	2,914	1,802	162.1%	-133	-4.4%	0.4%
Juneau	31,860	32,255	31,549	-311	-1.0%	-706	-2.2%	4.3%
Kake ¹	557	Served by Petersburg		N/S	N/S	N/S	N/S	N/S
Kenai	35,902	37,697	39,185	3,283	9.1%	1,488	3.9%	5.3%
Ketchikan	14,969	15,450	14,968	-1	0.0%	-482	-3.1%	2.0%
Kodiak	13,592	13,101	12,721	-871	-6.4%	-380	-2.9%	1.7%
Kotzebue	8,197	8,123	7,733	-464	-5.7%	-390	-4.8%	1.1%
McGrath ¹	505	Served by Aniak		N/S	N/S	N/S	N/S	N/S
Naknek	2,628	2,320	2,153	-475	-18.1%	-167	-7.2%	0.3%
Nenana	3,297	3,403	3,375	78	2.4%	-28	-0.8%	0.5%
Nome	7,264	7,667	7,362	98	1.3%	-305	-4.0%	1.0%
Palmer	88,995	107,081	113,920	24,925	28.0%	6,839	6.4%	15.5%
Petersburg ²	3,266	3,989	3,943	677	20.7%	-46	-1.2%	0.5%
Prince of Wales ³	4,008	3,582	3,664	-344	-8.6%	82	2.3%	0.5%
Sand Point	2,114	1,831	1,973	-141	-6.7%	142	7.8%	0.3%
Seward	5,465	5,771	5,496	31	0.6%	-275	-4.8%	0.7%
Sitka	9,041	8,658	8,410	-631	-7.0%	-248	-2.9%	1.1%
Skagway	968	1,240	1,127	159	16.4%	-113	-9.1%	0.2%
St. Mary's ⁴	2,723	2,868	2,795	72	2.6%	-73	-2.5%	0.4%
St. Paul	581	480	401	-180	-31.0%	-79	-16.5%	0.1%
Tanana ¹	246	Served by Nenana		N/S	N/S	N/S	N/S	N/S
Tok	2,012	1,975	2,034	22	1.1%	59	3.0%	0.3%
Unalakleet	2,228	2,379	2,266	38	1.7%	-113	-4.7%	0.3%
Unalaska	6,007	6,341	6,077	70	1.2%	-264	-4.2%	0.8%
Utqiagvik⁵	8,756	10,701	10,362	1,606	18.3%	-339	-3.2%	1.4%
Valdez	4,064	4,162	4,015	-49	-1.2%	-147	-3.5%	0.5%
Wrangell	2,369	2,127	2,039	-330	-13.9%	-88	-4.1%	0.3%
Yakutat	662	662	677	15	2.3%	15	2.3%	0.1%
Total	710,231	733,391	736,812	26,581	3.7%	3,421	0.5%	100.0%
1st District	71,664	72,286	71,077	-587	-0.8%	-1,209	-1.7%	9.6%
2nd District	26,445	28,870	27,723	1,278	4.8%	-1,147	-4.0%	3.8%
3rd District	475,626	495,776	501,896	26,270	5.5%	6,120	1.2%	68.1%
4th District	136,496	136,459	136,116	-380	-0.3%	-343	-0.3%	18.5%

* Population of the communities served by each court site are taken from U.S. Census.

Note: This table is comparable to Table 6.01 on page 153 of the FY17 annual report.

N/S: Numbers 10 or less are not compared statistically.

1. Chevak court closed in FY 2014; McGrath and Tanana courts closed in FY 2015; Kake court closed in October 2018.

2. Beginning with FY 2019, the Petersburg venue population includes the population previously covered by Kake. The Hoonah population now includes the population numbers for Gustavus, Tenakee Springs, and Excursion Inlet, which were previously included within the Juneau venue population.

3. Craig court was renamed Prince of Wales in FY 2016.

4. St. Mary's court closed in 2016. Records for filings from the venue are still maintained separately.

5. The community of Barrow changed its name to Utqiagvik in 2016.

**Table 3.03. Court Security Incidents: Summary Statistics
FY 24**

Total visitors screened into courthouses	409,832		
Screening incidents in which prohibited items* were found		Incident reports received	
Knives, razors, other sharp or pointed objects	3,143	Disorderly conduct	27
Marijuana	405	Suspicious activity	15
Alcohol found	214	Threats (verbal, written, physical, bomb, other)	12
Illegal drugs	126	Physical assault	5
Firearms	53	Protests	5
Other prohibited items	6,504	Inappropriate communications to judge/court staff	5
Total incidents	10,445	Seized or discovered weapons	2
		Physical damage to property	2
		Medical incidents	1
		Other	3
		Total FY24	77
		Total FY23	71

* Prohibited items as listed in Administrative Bulletin 85



Seabirds, humpback whale, and the NOAA Ship Oscar Dyson off Unalaska Island (Third Judicial District)



*Superior Court
Activity*

Winter bicyclist and muskoxen, Bethel (Fourth Judicial District)



Aurora borealis over Slaven's Roadhouse, Coal Creek Camp, Yukon-Charley Rivers National Preserve (Fourth Judicial District)

**Table 4.01. Total Superior Court Case Filings
FY 22 – FY 24**

Court	FY 22	FY 23	FY 24	Change	
				FY 22 to FY 24	FY 23 to FY 24
Anchorage	9,874	9,741	9,271	-6%	-5%
Angoon	4	2	4	N/S	N/S
Aniak	50	66	53	6%	-20%
Bethel	883	798	710	-20%	-11%
Cordova	41	49	41	0%	-16%
Delta Junction	28	32	48	71%	50%
Dillingham	231	203	235	2%	16%
Emmonak	84	76	68	-19%	-11%
Fairbanks	2,486	2,383	2,319	-7%	-3%
Fort Yukon	21	9	12	-43%	N/S
Galena	16	17	13	-19%	-24%
Glennallen	76	71	51	-33%	-28%
Haines	6	12	8	N/S	N/S
Homer	333	314	365	10%	16%
Hoonah	3	5	5	N/S	N/S
Hooper Bay	51	72	51	0%	-29%
Juneau	965	824	909	-6%	10%
Kenai	1,217	1,168	1,161	-5%	-1%
Ketchikan	545	435	552	1%	27%
Kodiak	320	290	235	-27%	-19%
Kotzebue	384	320	341	-11%	7%
Naknek	69	46	44	-36%	-4%
Nenana	34	40	30	-12%	-25%
Nome	318	346	337	6%	-3%
Palmer	2,964	2,884	2,652	-11%	-8%
Petersburg	74	53	74	0%	40%
Prince of Wales	101	105	88	-13%	-16%
Sand Point	10	12	11	N/S	-8%
Seward	147	162	131	-11%	-19%
Sitka	225	179	205	-9%	15%
Skagway	0	3	1	N/S	N/S
St. Mary's ¹	83	61	44	-47%	-28%
St. Paul	16	6	6	N/S	N/S
Tok	58	43	59	2%	37%
Unalakleet	47	89	60	28%	-33%
Unalaska	31	32	26	-16%	-19%
Utqiagvik	289	302	294	2%	-3%
Valdez	73	68	70	-4%	3%
Wrangell	53	41	48	-9%	17%
Yakutat	5	6	5	N/S	N/S
Total	22,215	21,365	20,637	-7%	-3%
1st District	1,981	1,665	1,899	-4%	14%
2nd District	1,038	1,057	1,032	-1%	-2%
3rd District	15,402	15,046	14,299	-7%	-5%
4th District	3,794	3,597	3,407	-10%	-5%

N/S: Numbers 10 or less are not compared statistically.

1. St. Mary's court closed in 2016. Records for filings from the venue are still maintained separately.

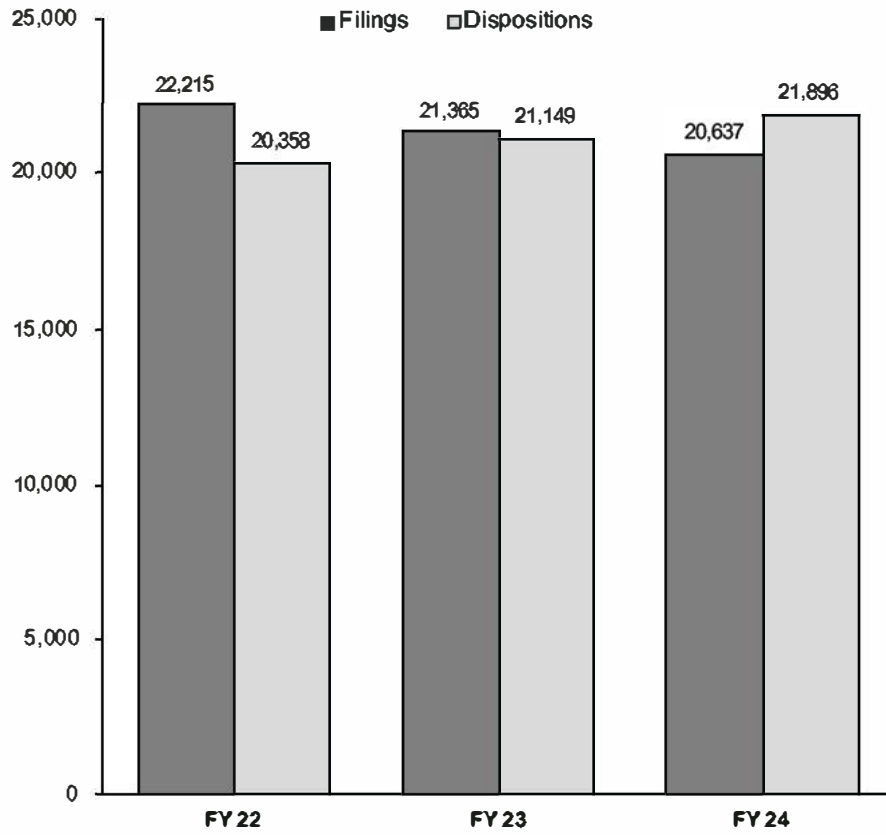
**Table 4.02. Total Superior Court Case Dispositions
FY 22 – FY 24**

Court	FY 22	FY 23	FY 24	Change	
				FY 22 to FY 24	FY 23 to FY 24
Anchorage	8,885	9,479	10,105	14%	7%
Angeon	1	6	1	N/S	N/S
Aniak	63	57	66	5%	16%
Bethel	812	900	736	-9%	-18%
Cordova	37	43	44	19%	2%
Delta Junction	33	33	23	-30%	-30%
Dillingham	252	194	262	4%	35%
Emmonak	79	106	75	-5%	-29%
Fairbanks	2,525	2,438	2,093	-17%	-14%
Fort Yukon	19	20	10	N/S	N/S
Galena	19	12	18	-5%	50%
Glennallen	58	56	84	45%	50%
Haines	5	6	11	N/S	N/S
Homer	362	333	415	15%	25%
Hoonah	3	5	6	N/S	N/S
Hooper Bay	55	62	72	31%	16%
Juneau	943	910	921	-2%	1%
Kenai	1,044	1,244	1,261	21%	1%
Ketchikan	473	494	503	6%	2%
Kodiak	283	288	256	-10%	-11%
Kotzebue	355	352	371	5%	5%
Naknek	65	60	66	2%	10%
Nenana	50	30	28	-44%	-7%
Nome	290	262	333	15%	27%
Palmer	2,526	2,673	2,975	18%	11%
Petersburg	66	62	70	6%	13%
Prince of Wales	120	98	110	-8%	12%
Sand Point	10	11	23	N/S	109%
Seward	114	145	137	20%	-6%
Sitka	236	193	188	-20%	-3%
Skagway	0	3	3	N/S	N/S
St. Mary's ¹	69	82	66	-4%	-20%
St. Paul	7	14	10	N/S	N/S
Tok	51	38	44	-14%	16%
Unalakleet	43	58	86	100%	48%
Unalaska	27	30	35	30%	17%
Utqiagvik	257	260	280	9%	8%
Valdez	71	52	60	-15%	15%
Wrangell	49	32	46	-6%	44%
Yakutat	1	8	3	N/S	N/S
Total	20,358	21,149	21,896	8%	4%
1st District	1,897	1,817	1,862	-2%	2%
2nd District	945	932	1,070	13%	15%
3rd District	13,741	14,622	15,733	14%	8%
4th District	3,775	3,778	3,231	-14%	-14%

N/S: Numbers 10 or less are not compared statistically.

1. St. Mary's court closed in 2016. Records for filings from the venue are still maintained separately.

**Figure 4.01. Superior Court Filing and Disposition Trends
FY 22 – FY 24**



**Table 4.03. Superior Court Clearance Rates
FY 23 – FY 24**

Court	Filings		Dispositions		Clearance rates	
	FY 24	Change from FY 23	FY 24	Change from FY 23	FY 23	FY 24
Anchorage	9,271	-5%	10,105	7%	97%	109%
Angeon	4	N/S	1	N/S	N/S	N/S
Aniak	53	-20%	66	16%	86%	125%
Bethel	710	-11%	736	-18%	113%	104%
Cordova	41	-16%	44	2%	88%	107%
Delta Junction	48	50%	23	-30%	103%	48%
Dillingham	235	16%	262	35%	96%	112%
Emmonak	68	-11%	75	-29%	140%	110%
Fairbanks	2,319	-3%	2,093	-14%	102%	90%
Fort Yukon	12	N/S	10	N/S	N/S	N/S
Galena	13	-24%	18	50%	71%	139%
Glennallen	51	-28%	84	50%	79%	165%
Haines	8	N/S	11	N/S	N/S	N/S
Homer	365	16%	415	25%	106%	114%
Hoonah	5	N/S	6	N/S	N/S	N/S
Hooper Bay	51	-29%	72	16%	86%	141%
Juneau	909	10%	921	1%	110%	101%
Kenai	1,161	-1%	1,261	1%	107%	109%
Ketchikan	552	27%	503	2%	114%	91%
Kodiak	235	-19%	256	-11%	99%	109%
Kotzebue	341	7%	371	5%	110%	109%
Naknek	44	-4%	66	10%	130%	150%
Nenana	30	-25%	28	-7%	75%	93%
Nome	337	-3%	333	27%	76%	99%
Palmer	2,652	-8%	2,975	11%	93%	112%
Petersburg	74	40%	70	13%	117%	95%
Prince of Wales	88	-16%	110	12%	93%	125%
Sand Point	11	-8%	23	109%	92%	209%
Seward	131	-19%	137	-6%	90%	105%
Sitka	205	15%	188	-3%	108%	92%
Skagway	1	N/S	3	N/S	N/S	N/S
St. Mary's ¹	44	-28%	66	-20%	134%	150%
St. Paul	6	N/S	10	N/S	N/S	N/S
Tok	59	37%	44	16%	88%	75%
Unalakleet	60	-33%	86	48%	65%	143%
Unalaska	26	-19%	35	17%	94%	135%
Utqiagvik	294	-3%	280	8%	86%	95%
Valdez	70	3%	60	15%	77%	86%
Wrangell	48	17%	46	44%	78%	96%
Yakutat	5	N/S	3	N/S	N/S	N/S
Total	20,637	-3%	21,896	4%	99%	106%
1st District	1,899	14%	1,862	2%	109%	98%
2nd District	1,032	-2%	1,070	15%	88%	104%
3rd District	14,299	-5%	15,733	8%	97%	110%
4th District	3,407	-5%	3,231	-14%	105%	95%

Clearance rate measures whether a court is keeping up with its incoming caseload. Courts aspire to clear (i.e., dispose of) at least as many cases as have been filed in a period by having a clearance rate of 100 percent or higher.

N/S: Numbers 10 or less are not compared statistically.

1. St. Mary's court closed in 2016. Records for filings from the venue are still maintained separately.

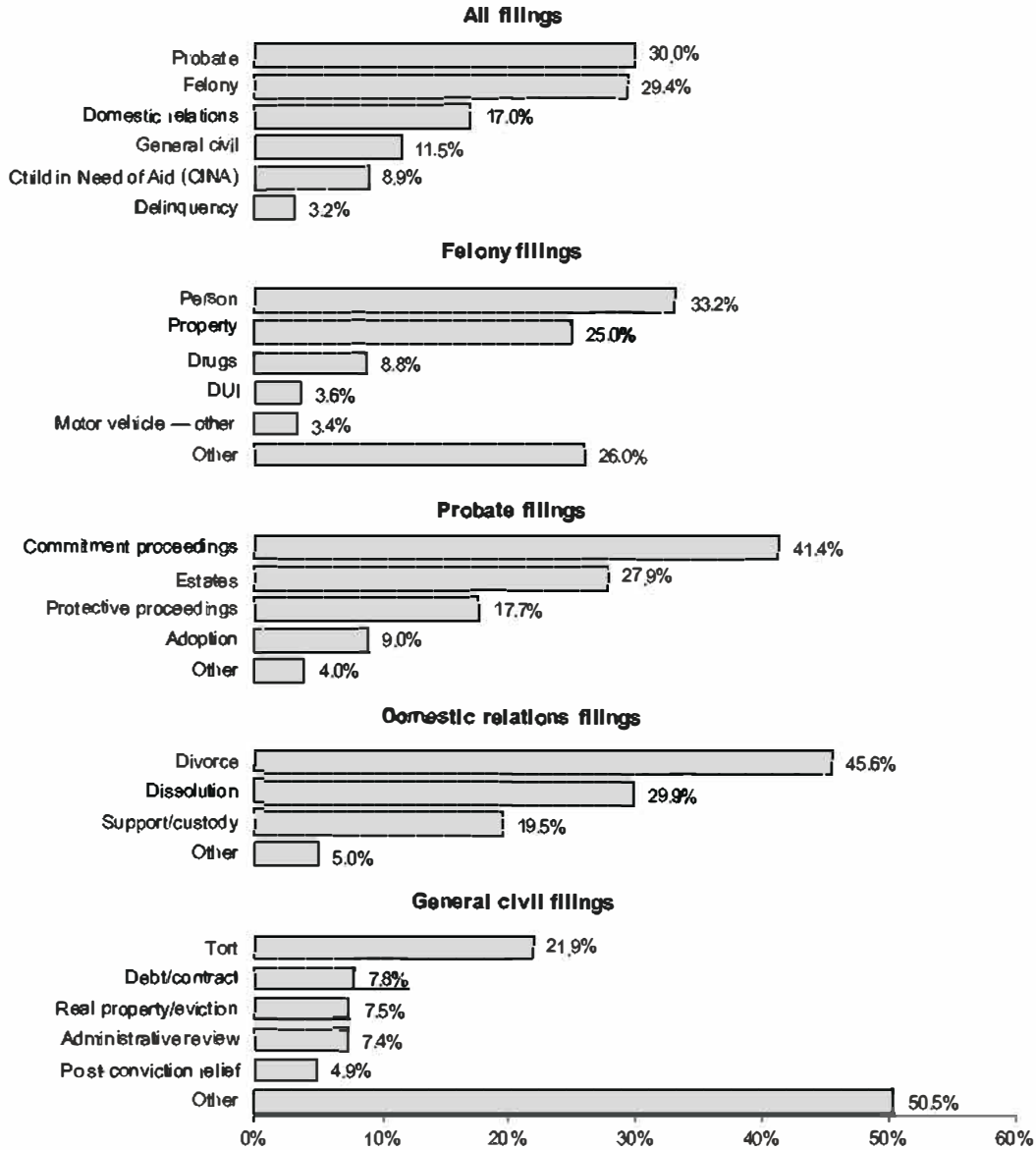
**Table 4.04. Superior Court Filings by Case Type
FY 24**

Court	Felony	CINA	Delinquency	Domestic relations	General civil	Probate	Total
Anchorage	2,790	701	313	1,507	1,154	2,806	9,271
Angeon	4	0	0	0	0	0	4
Aniak	35	14	3	0	1	0	53
Bethel	207	122	41	78	56	206	710
Cordova	19	0	1	6	3	12	41
Delta Junction	24	0	1	8	9	6	48
Dillingham	78	56	0	16	21	64	235
Emmonak	51	11	5	0	1	0	68
Fairbanks	608	188	43	597	302	581	2,319
Fort Yukon	11	0	0	0	0	1	12
Galena	11	0	0	1	0	1	13
Glennallen	11	5	0	12	7	16	51
Haines	8	0	0	0	0	0	8
Homer	103	44	1	64	42	111	365
Hoonah	5	0	0	0	0	0	5
Hooper Bay	29	17	5	0	0	0	51
Juneau	186	47	41	131	133	371	909
Kenai	357	116	36	208	118	326	1,161
Ketchikan	150	73	9	75	47	198	552
Kodiak	77	15	6	47	24	66	235
Kotzebue	134	49	10	34	16	98	341
Naknek	24	5	0	7	1	7	44
Nenana	22	0	0	7	1	0	30
Nome	113	35	15	21	44	109	337
Palmer	613	245	81	533	290	890	2,652
Petersburg	20	3	1	18	7	25	74
Prince of Wales	22	4	1	20	9	32	88
Sand Point	11	0	0	0	0	0	11
Seward	62	17	2	13	14	23	131
Sitka	51	12	18	36	16	72	205
Skagway	1	0	0	0	0	0	1
St. Mary's ¹	27	14	3	0	0	0	44
St. Paul	2	4	0	0	0	0	6
Tok	40	1	0	7	7	4	59
Unalakleet	60	0	0	0	0	0	60
Unalaska	11	0	0	7	6	2	26
Utqiagvik	69	38	19	30	27	111	294
Valdez	10	4	8	23	5	20	70
Wrangell	10	1	0	10	5	22	48
Yakutat	5	0	0	0	0	0	5
Total	6,071	1,841	663	3,516	2,366	6,180	20,637
% of total	29.4	8.9	3.2	17.0	11.5	30.0	100.0
1st District	462	140	70	290	217	720	1,899
2nd District	376	122	44	85	87	318	1,032
3rd District	4,168	1,212	448	2,443	1,685	4,343	14,299
4th District	1,065	367	101	698	377	799	3,407

1. St. Mary's court closed in 2016. Records for filings from the venue are still maintained separately.

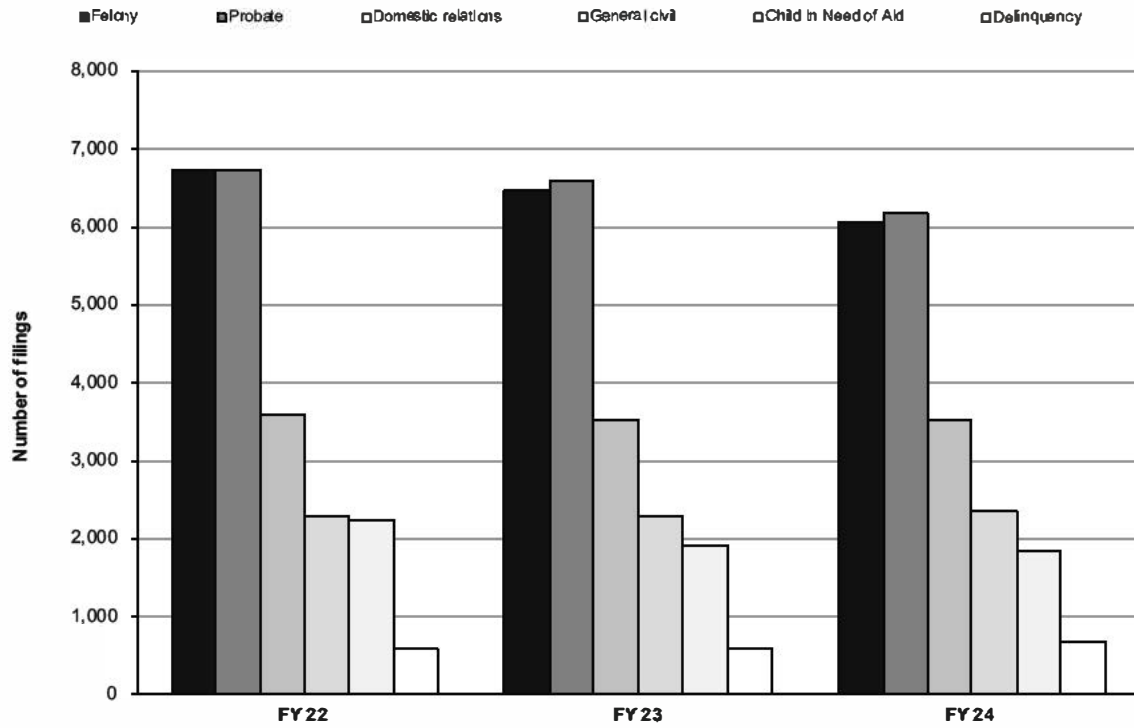
**Figure 4.02. Composition of Superior Court Filings
FY 24**

Percentages within categories.



This chart analyzes the types of cases filed in Superior Court during FY24. Probate case filings are the major case filing type, comprising 30.0% of total case filings. Felony cases are second with 29.4% of the filings.

**Figure 4.03. Superior Court Filing Trends by Case Type
FY 22 – FY 24**



Filing Type	FY 22	FY 23	FY 24	FY 22 to FY 24 change	FY 23 to FY 24 change
Felony	6,736	6,485	6,071	-10%	-6%
Probate	6,746	6,568	6,180	-8%	-6%
Domestic relations	3,600	3,520	3,516	-2%	0%
General civil	2,299	2,288	2,366	3%	3%
Child in Need of Aid	2,233	1,901	1,841	-18%	-3%
Delinquency	601	583	663	10%	14%
Total	22,215	21,365	20,637	-7%	-3%

**Table 4.05. Superior Court Dispositions by Case Type
FY 24**

Court	Felony	CINA	Delinquency	Domestic relations	General civil	Probate	Total
Anchorage	3,390	735	246	1,444	1,182	3,108	10,105
Angoon	1	0	0	0	0	0	1
Aniak	47	0	18	0	0	1	66
Bethel	295	95	52	53	47	194	736
Cordova	22	6	0	3	4	9	44
Delta Junction	7	0	1	8	3	4	23
Dillingham	81	87	0	16	16	62	262
Emmonak	62	6	7	0	0	0	75
Fairbanks	567	229	39	515	264	479	2,093
Fort Yukon	9	0	0	0	0	1	10
Galena	16	1	0	1	0	0	18
Glennallen	26	35	1	8	5	9	84
Haines	11	0	0	0	0	0	11
Homer	126	30	5	64	37	153	415
Hoonah	6	0	0	0	0	0	6
Hooper Bay	47	10	15	0	0	0	72
Juneau	167	67	35	141	141	370	921
Kenai	433	76	38	210	119	385	1,261
Ketchikan	148	58	8	64	39	186	503
Kodiak	107	23	9	48	28	41	256
Kotzebue	166	63	18	38	10	76	371
Naknek	39	8	0	12	0	7	66
Nenana	24	0	0	4	0	0	28
Nome	124	45	15	27	32	90	333
Palmer	706	302	66	478	277	1,146	2,975
Petersburg	19	4	0	13	9	25	70
Prince of Wales	30	12	5	21	7	35	110
Sand Point	23	0	0	0	0	0	23
Seward	72	9	1	15	12	28	137
Sitka	46	6	15	33	19	69	188
Skagway	3	0	0	0	0	0	3
St. Mary's ¹	47	14	5	0	0	0	66
St. Paul	6	4	0	0	0	0	10
Tok	27	1	0	6	7	3	44
Unalakleet	86	0	0	0	0	0	86
Unalaska	19	0	0	6	7	3	35
Utqiagvik	77	57	20	35	18	73	280
Valdez	19	8	10	11	3	9	60
Wrangell	9	0	0	12	2	23	46
Yakutat	3	0	0	0	0	0	3
Total	7,113	1,991	629	3,286	2,288	6,589	21,896
% of total	32.5	9.1	2.9	15.0	10.4	30.1	100.0
1st District	443	147	63	284	217	708	1,862
2nd District	453	165	53	100	60	239	1,070
3rd District	5,069	1,323	376	2,315	1,690	4,960	15,733
4th District	1,148	356	137	587	321	682	3,231

1. St. Mary's court closed in 2016. Records for filings from the venue are still maintained separately.

**Table 4.06. Felony Case Filings
FY 22 – FY 24**

Court	FY 22	FY 23	FY 24	Change	
				FY 22 to FY 24	FY 23 to FY 24
Anchorage	3,057	2,972	2,790	-9%	-6%
Angoon	3	2	4	N/S	N/S
Aniak	43	44	35	-19%	-20%
Bethel	328	261	207	-37%	-21%
Cordova	10	18	19	N/S	6%
Delta Junction	5	5	24	N/S	N/S
Dillingham	85	69	78	-8%	13%
Emmonak	58	48	51	-12%	6%
Fairbanks	647	619	608	-6%	-2%
Fort Yukon	18	7	11	-39%	N/S
Galena	15	16	11	-27%	-31%
Glennallen	24	20	11	-54%	-45%
Haines	6	12	8	N/S	N/S
Homer	125	101	103	-18%	2%
Hoonah	2	5	5	N/S	N/S
Hooper Bay	42	45	29	-31%	-36%
Juneau	197	180	186	-6%	3%
Kenai	361	326	357	-1%	10%
Ketchikan	121	142	150	24%	6%
Kodiak	131	118	77	-41%	-35%
Kotzebue	142	144	134	-6%	-7%
Naknek	49	25	24	-51%	-4%
Nenana	24	33	22	-8%	-33%
Nome	116	96	113	-3%	18%
Palmer	668	700	613	-8%	-12%
Petersburg	21	6	20	-5%	N/S
Prince of Wales	30	38	22	-27%	-42%
Sand Point	9	11	11	N/S	0%
Seward	83	92	62	-25%	-33%
Sitka	37	51	51	38%	0%
Skagway	0	3	1	N/S	N/S
St. Mary's ¹	61	47	27	-56%	-43%
St. Paul	11	6	2	N/S	N/S
Tok	43	30	40	-7%	33%
Unalakleet	47	87	60	28%	-31%
Unalaska	12	15	11	-8%	-27%
Utqiagvik	79	62	69	-13%	11%
Valdez	12	16	10	N/S	N/S
Wrangell	9	8	10	N/S	N/S
Yakutat	5	5	5	N/S	N/S
Total	6,736	6,485	6,071	-10%	-6%
1st District	431	452	462	7%	2%
2nd District	384	389	376	-2%	-3%
3rd District	4,637	4,489	4,168	-10%	-7%
4th District	1,284	1,155	1,065	-17%	-8%

N/S: Numbers 10 or less are not compared statistically.

1. St. Mary's court closed in 2016. Records for filings from the venue are still maintained separately.

**Table 4.07. Felony Filings by Case Type
FY 24**

Court	Person	Property	Drugs	Weapon	Public order	DUI	Reckless driving	Motor	Protective	Fish & Game	Other	Total
								vehicle — other	order violation			
Anchorage	833	635	173	85	9	83	0	86	0	0	886	2,790
Angeon	3	1	0	0	0	0	0	0	0	0	0	4
Aniak	29	5	0	0	0	0	0	0	0	0	1	35
Bethel	137	45	1	6	2	1	0	1	0	0	14	207
Cordova	2	6	8	0	0	0	0	0	0	0	3	19
Delta Junction	8	3	1	0	0	1	0	0	0	0	11	24
Dillingham	42	22	1	2	2	1	0	2	0	0	6	78
Emmonak	35	6	0	3	3	1	0	1	0	0	2	51
Fairbanks	179	158	39	33	12	40	0	27	0	0	120	608
Fort Yukon	4	5	0	0	0	0	0	0	0	0	2	11
Galena	8	2	0	1	0	0	0	0	0	0	0	11
Glennallen	6	2	0	0	0	2	0	1	0	0	0	11
Haines	3	2	2	0	0	0	0	0	0	0	1	8
Homer	34	21	12	10	1	7	0	4	0	0	14	103
Hoonah	5	0	0	0	0	0	0	0	0	0	0	5
Hooper Bay	23	3	0	1	1	0	0	0	0	0	1	29
Juneau	49	66	34	1	2	6	0	3	0	0	25	186
Kenai	84	114	67	8	9	15	0	13	0	0	47	357
Ketchikan	31	68	32	0	1	2	0	4	0	0	12	150
Kodiak	24	11	24	1	0	4	0	4	0	0	9	77
Kotzebue	71	27	1	3	24	2	0	0	0	0	6	134
Naknek	8	10	3	0	0	2	0	0	0	0	1	24
Nenana	13	2	1	1	0	0	0	1	0	0	4	22
Nome	63	21	9	0	1	0	0	0	0	0	19	113
Palmer	156	195	86	25	6	34	0	49	0	0	62	613
Petersburg	4	3	12	0	0	0	0	0	0	0	1	20
Prince of Wales	12	5	0	2	0	1	0	0	0	0	2	22
Sand Point	2	3	3	0	0	0	0	0	0	0	3	11
Seward	13	14	15	5	0	5	0	3	0	0	7	62
Sitka	13	18	8	2	0	4	0	1	0	0	5	51
Skagway	1	0	0	0	0	0	0	0	0	0	0	1
St. Mary's ¹	21	3	0	1	2	0	0	0	0	0	0	27
St. Paul	2	0	0	0	0	0	0	0	0	0	0	2
Tok	11	6	1	1	0	1	0	1	0	0	19	40
Unalakleet	40	8	1	0	6	2	0	0	0	0	3	60
Unalaska	5	6	0	0	0	0	0	0	0	0	0	11
Utqiagvik	34	15	0	2	2	2	0	4	0	0	10	69
Valdez	3	3	1	0	1	2	0	0	0	0	0	10
Wrangell	3	2	2	1	0	0	0	0	0	0	2	10
Yakutat	3	0	0	0	0	0	0	0	0	0	2	5
Total	2,017	1,516	537	194	84	218	0	205	0	0	1,300	6,071
% of total	33.2	25.0	8.8	3.2	1.4	3.6	0.0	3.4	0.0	0.0	21.4	100.0
1st District	127	165	90	6	3	13	0	8	0	0	50	462
2nd District	208	71	11	5	33	6	0	4	0	0	38	376
3rd District	1,214	1,042	393	136	28	155	0	162	0	0	1,038	4,168
4th District	468	238	43	47	20	44	0	31	0	0	174	1,065

1. St. Mary's court closed in 2016. Records for filings from the venue are still maintained separately.

**Table 4.08. Criminal Case Types
FY 24**

Person	Public Order
Homicide	Riot
Assault	Disorderly Conduct
Reckless Endangerment	Harassment
Kidnapping	Indecent Viewing or Photography
Custodial Interference	Possess or Distribute Child Pornography
Human Trafficking	Cruelty to Animals
Sex Offenses	Recruiting Gang Members
Robbery	Gambling
Extortion	Alcohol Licensing Laws
Coercion	
	Motor Vehicle DUI
Property	Motor Vehicle Reckless Driving
Theft	
Burglary	Motor Vehicle Other
Criminal Trespass	
Vehicle Theft	Protection Order Violation
Arson	
Criminal Mischief	Fish and Game
Business and Commercial Offenses	
	Other
Drugs	Offenses against Public Administration
Misconduct Involving a Controlled Substance	Offenses against Family and Vulnerable Adults
Manufacture, Delivery or Possession of Imitation Controlled Substance	All other offenses, including cases in which a charging document was never filed
Weapons	
Misconduct Involving Weapons	
Criminal Possession of Explosives	
Unlawful Furnishing of Explosives	

Criminal cases typically contain multiple charges. The Alaska Court System categorizes cases for reporting purposes based on the most serious charge.

In FY07 the Alaska Court System changed the way it categorizes criminal cases for annual reporting. The categories now conform to the National Center for State Courts' national model for caseload statistical reporting. This change is intended to make Alaska statistics easier to compile, understand, and compare to those of other jurisdictions.

**Table 4.09. Felony Case Dispositions
FY 22 – FY 24**

Court	FY 22	FY 23	FY 24	Change	
				FY 22 to FY 24	FY 23 to FY 24
Anchorage	3,087	3,230	3,390	10%	5%
Angeon	1	5	1	N/S	N/S
Aniak	53	50	47	-11%	-6%
Bethel	322	366	295	-8%	-19%
Cordova	17	13	22	29%	69%
Delta Junction	7	4	7	N/S	N/S
Dillingham	115	63	81	-30%	29%
Emmonak	55	82	62	13%	-24%
Fairbanks	726	571	567	-22%	-1%
Fort Yukon	17	16	9	N/S	N/S
Galena	16	12	16	0%	33%
Glennallen	21	17	26	24%	53%
Haines	5	6	11	N/S	N/S
Homer	154	121	126	-18%	4%
Hoonah	2	5	6	N/S	N/S
Hooper Bay	45	54	47	4%	-13%
Juneau	200	236	167	-16%	-29%
Kenai	264	413	433	64%	5%
Ketchikan	107	126	148	38%	17%
Kodiak	107	90	107	0%	19%
Kotzebue	165	187	166	1%	-11%
Naknek	43	40	39	-9%	-2%
Nenana	41	22	24	-41%	9%
Nome	110	117	124	13%	6%
Palmer	612	691	706	15%	2%
Petersburg	19	9	19	0%	N/S
Prince of Wales	40	34	30	-25%	-12%
Sand Point	9	8	23	N/S	N/S
Seward	71	83	72	1%	-13%
Sitka	41	53	46	12%	-13%
Skagway	0	2	3	N/S	N/S
St. Mary's ¹	60	72	47	-22%	-35%
St. Paul	6	12	6	N/S	N/S
Tok	37	31	27	-27%	-13%
Unalakleet	43	56	86	100%	54%
Unalaska	9	20	19	N/S	-5%
Utqiagvik	94	88	77	-18%	-12%
Valdez	16	13	19	19%	46%
Wrangell	12	9	9	N/S	N/S
Yakutat	1	7	3	N/S	N/S
Total	6,750	7,034	7,113	5%	1%
1st District	428	492	443	4%	-10%
2nd District	412	448	453	10%	1%
3rd District	4,531	4,814	5,069	12%	5%
4th District	1,379	1,280	1,148	-17%	-10%

N/S: Numbers 10 or less are not compared statistically.

1. St. Mary's court closed in 2016. Records for filings from the venue are still maintained separately.

**Table 4.10. Felony Case Dispositions by Manner of Disposition
FY 24**

Court	Cases disposed in District Court ¹						Cases disposed in Superior Court						Total
	Non-trial			Trial		Subtotal	Non-trial			Trial		Subtotal	
	Case dismissed	GUILTY plea	Other	GUILTY	Not guilty		Case dismissed	GUILTY plea	Other	GUILTY	Not guilty		
Anchorage	1,550	696	2	0	0	2,248	202	901	0	34	5	1,142	3,390
Angoon	0	1	0	0	0	1	0	0	0	0	0	0	1
Ariak	16	16	0	0	0	32	7	6	0	1	1	15	47
Bethel	87	93	0	0	0	180	32	80	0	2	1	115	295
Cordova	6	7	0	0	0	13	0	7	0	2	0	9	22
Delta Junction	1	0	0	0	0	1	3	3	0	0	0	6	7
Dillingham	13	28	0	0	0	41	3	31	0	5	1	40	81
Emmonak	21	19	0	0	0	40	5	14	0	3	0	22	62
Fairbanks	80	17	2	0	0	99	105	341	1	14	7	468	967
Fort Yukon	1	0	0	0	0	1	0	8	0	0	0	8	9
Galena	0	1	0	0	0	1	3	11	0	1	0	15	16
Glennallen	5	1	0	0	0	6	0	19	0	1	0	20	26
Haines	0	0	0	0	0	0	6	5	0	0	0	11	11
Homer	10	51	0	0	0	61	10	49	1	5	0	65	126
Hoonah	1	2	0	0	0	3	0	3	0	0	0	3	6
Hooper Bay	10	16	0	0	0	26	8	12	0	1	0	21	47
Juneau	9	6	0	0	0	15	39	106	4	3	0	152	167
Kenai	35	96	1	0	0	132	43	242	4	9	3	301	433
Ketchikan	25	30	0	0	0	55	18	66	0	6	1	93	148
Kodiak	12	28	0	0	0	40	14	48	0	5	0	67	107
Kotzebue	26	73	0	0	0	99	5	56	0	4	2	67	166
Naknek	6	9	0	0	0	15	2	21	0	1	0	24	39
Nenana	3	2	0	0	0	5	11	8	0	0	0	19	24
Nome	29	60	0	0	1	90	3	31	0	0	0	34	124
Palmer	88	93	1	0	1	183	118	390	1	14	0	523	706
Petersburg	3	2	0	0	0	5	1	11	0	2	0	14	19
Prince of Wales	9	8	0	0	0	17	0	10	1	2	0	13	30
Sand Point	9	5	0	0	0	14	1	8	0	0	0	9	23
Seward	2	13	0	0	0	15	8	46	1	1	1	57	72
Sitka	3	11	0	0	1	15	4	25	0	1	1	31	46
Skagway	0	0	0	0	0	0	0	3	0	0	0	3	3
St. Mary's ²	7	18	0	0	0	25	3	19	0	0	0	22	47
St. Paul	1	1	0	0	0	2	0	2	0	2	0	4	6
Tok	3	1	0	0	0	4	7	14	1	1	0	23	27
Unalakleet	17	40	0	0	1	58	1	27	0	0	0	28	86
Unalaska	4	7	0	0	0	11	6	2	0	0	0	8	19
Utgavik	9	4	1	0	0	14	26	36	0	0	1	63	77
Valdez	4	5	0	0	0	9	3	6	0	1	0	10	19
Wrangell	0	2	0	1	0	3	2	3	0	1	0	6	9
Yakutat	0	1	0	0	0	1	1	0	0	0	1	2	3
Total	2,105	1,463	7	1	4	3,580	700	2,672	14	122	26	3,983	7,113
% of total	29.6	20.6	0.1	0.0	0.1	50.3	9.8	37.5	0.2	1.7	0.4	49.7	100.0
1st District	50	63	0	1	1	115	71	234	5	15	3	328	443
2nd District	81	177	1	0	2	261	35	150	0	4	3	192	453
3rd District	1,745	1,040	4	0	1	2,790	410	1,772	7	80	10	2,279	5,069
4th District	229	183	2	0	0	414	184	516	2	23	9	734	1,148

1. All felony charges were either reduced to misdemeanors or dismissed while these cases were still in District Court. Convictions in these cases were for misdemeanors only.
 2. St. Mary's court closed in 2016. Records for filings from the venue are still maintained separately.

**Table 4.11. Post-judgment Filings: Felony Petitions to Revoke Probation
FY 22 – FY 24**

Court	FY 22	FY 23	FY 24	Change	
				FY 22 to FY 24	FY 23 to FY 24
Anchorage	729	756	827	13%	9%
Angeon	0	0	2	N/S	N/S
Aniak	18	21	18	0%	-14%
Bethel	87	90	167	92%	86%
Cordova	0	2	2	N/S	N/S
Delta Junction	7	4	2	N/S	N/S
Dillingham	40	29	33	-17%	14%
Emmonak	17	34	38	124%	12%
Fairbanks	255	251	235	-8%	-6%
Fort Yukon	6	4	1	N/S	N/S
Galena	8	5	0	N/S	N/S
Glennallen	3	6	3	N/S	N/S
Haines	1	3	1	N/S	N/S
Homer	68	58	49	-28%	-16%
Hoonah	0	1	0	N/S	N/S
Hooper Bay	14	9	23	64%	N/S
Juneau	90	78	93	3%	19%
Kenai	275	178	184	-33%	3%
Ketchikan	118	112	91	-23%	-19%
Kodiak	73	84	64	-12%	-24%
Kotzebue	101	116	132	31%	14%
Naknek	7	10	11	N/S	N/S
Nenana	9	9	5	N/S	N/S
Nome	63	71	87	38%	23%
Palmer	150	191	180	20%	-6%
Petersburg	7	7	4	N/S	N/S
Prince of Wales	20	22	9	N/S	N/S
Sand Point	13	3	14	8%	N/S
Seward	23	20	24	4%	20%
Sitka	27	32	21	-22%	-34%
Skagway	0	0	0	N/S	N/S
St. Mary's ¹	8	20	13	N/S	-35%
St. Paul	1	4	0	N/S	N/S
Tok	6	4	12	N/S	N/S
Unalakleet	12	22	35	192%	59%
Unalaska	3	4	2	N/S	N/S
Utqiagvik	18	25	16	-11%	-36%
Valdez	8	8	3	N/S	N/S
Wrangell	12	4	5	N/S	N/S
Yakutat	4	0	2	N/S	N/S
Total	2,301	2,297	2,408	5%	5%
1st District	279	259	228	-18%	-12%
2nd District	194	234	270	39%	15%
3rd District	1,393	1,353	1,396	0%	3%
4th District	435	451	514	18%	14%

N/S: Numbers 10 or less are not compared statistically.

1. St. Mary's court closed in 2016. Records for filings from the venue are still maintained separately.

**Table 4.12. Probate Case Filings
FY 22 – FY 24**

Court	FY 22	FY 23	FY 24	Change	
				FY 22 to FY 24	FY 23 to FY 24
Anchorage	3,171	3,084	2,806	-12%	-9%
Angoon	0	0	0	N/S	N/S
Aniak	0	0	0	N/S	N/S
Bethel	250	266	206	-18%	-23%
Cordova	14	14	12	-14%	-14%
Delta Junction	4	9	6	N/S	N/S
Dillingham	43	60	64	49%	7%
Emmonak	1	0	0	N/S	N/S
Fairbanks	640	633	581	-9%	-8%
Fort Yukon	0	0	1	N/S	N/S
Galena	1	0	1	N/S	N/S
Glennallen	9	13	16	N/S	23%
Haines	0	0	0	N/S	N/S
Homer	84	88	111	32%	26%
Hoonah	1	0	0	N/S	N/S
Hooper Bay	0	0	0	N/S	N/S
Juneau	353	300	371	5%	24%
Kenai	391	387	326	-17%	-16%
Ketchikan	213	149	198	-7%	33%
Kodiak	87	72	66	-24%	-8%
Kotzebue	70	64	98	40%	53%
Naknek	3	4	7	N/S	N/S
Nenana	1	0	0	N/S	N/S
Nome	89	131	109	22%	-17%
Palmer	1,034	988	890	-14%	-10%
Petersburg	26	26	25	-4%	-4%
Prince of Wales	39	34	32	-18%	-6%
Sand Point	0	1	0	N/S	N/S
Seward	15	34	23	53%	-32%
Sitka	84	78	72	-14%	-8%
Skagway	0	0	0	N/S	N/S
St. Mary's ¹	0	0	0	N/S	N/S
St. Paul	0	0	0	N/S	N/S
Tok	4	5	4	N/S	N/S
Unalakleet	0	0	0	N/S	N/S
Unalaska	2	6	2	N/S	N/S
Utqiagvik	66	106	111	68%	5%
Valdez	22	22	20	-9%	-9%
Wrangell	29	14	22	-24%	57%
Yakutat	0	0	0	N/S	N/S
Total	6,746	6,588	6,180	-8%	-6%
1st District	745	601	720	-3%	20%
2nd District	225	301	318	41%	6%
3rd District	4,875	4,773	4,343	-11%	-9%
4th District	901	913	799	-11%	-12%

N/S: Numbers 10 or less are not compared statistically.

1. St. Mary's court closed in 2016. Records for filings from the venue are still maintained separately.

**Table 4.13. Probate Filings by Case Type
FY 24**

Court	Adoptions	Estates	Commitment proceedings	Protective proceedings¹	Minor proceedings²	Other	Total
Anchorage	213	709	1,238	453	119	74	2,806
Angoon	0	0	0	0	0	0	0
Aniak	0	0	0	0	0	0	0
Bethel	11	16	153	24	2	0	206
Cordova	2	3	6	1	0	0	12
Delta Junction	1	2	1	2	0	0	6
Dillingham	9	8	38	9	0	0	64
Emmonak	0	0	0	0	0	0	0
Fairbanks	72	234	123	137	11	4	581
Fort Yukon	0	0	1	0	0	0	1
Galena	0	1	0	0	0	0	1
Glennallen	5	4	1	6	0	0	16
Haines	0	0	0	0	0	0	0
Homer	9	39	26	36	0	1	111
Hoonah	0	0	0	0	0	0	0
Hooper Bay	0	0	0	0	0	0	0
Juneau	17	89	208	51	3	3	371
Kenai	27	144	76	76	3	0	326
Ketchikan	17	54	99	25	1	2	198
Kodiak	8	37	9	12	0	0	66
Kotzebue	12	9	66	10	1	0	98
Naknek	1	4	1	1	0	0	7
Nenana	0	0	0	0	0	0	0
Nome	6	19	59	25	0	0	109
Palmer	120	251	344	159	15	1	890
Petersburg	3	13	5	4	0	0	25
Prince of Wales	2	12	11	7	0	0	32
Sand Point	0	0	0	0	0	0	0
Seward	2	8	1	11	0	1	23
Sitka	0	19	31	21	1	0	72
Skagway	0	0	0	0	0	0	0
St. Mary's ³	0	0	0	0	0	0	0
St. Paul	0	0	0	0	0	0	0
Tok	2	2	0	0	0	0	4
Unalakleet	0	0	0	0	0	0	0
Unalaska	0	1	1	0	0	0	2
Utqiagvik	12	26	59	14	0	0	111
Valdez	0	8	1	8	3	0	20
Wrangell	3	12	3	4	0	0	22
Yakutat	0	0	0	0	0	0	0
Total	554	1,724	2,561	1,096	159	86	6,180
% of total	9.0	27.9	41.4	17.7	2.6	1.4	100.0
1st District	42	199	357	112	5	5	720
2nd District	30	54	184	49	1	0	318
3rd District	396	1,216	1,742	772	140	77	4,343
4th District	86	255	278	163	13	4	799

1. Guardianships, conservatorships, etc.

2. Minor settlements, emancipations, etc.

3. St. Mary's court closed in 2016. Records for filings from the venue are still maintained separately.

**Table 4.14. Probate Case Dispositions
FY 22 – FY 24**

Court	FY 22	FY 23	FY 24	Change	
				FY 22 to FY 24	FY 23 to FY 24
Anchorage	2,526	2,601	3,108	23%	19%
Angoon	0	0	0	N/S	N/S
Aniak	0	0	1	N/S	N/S
Bethel	248	244	194	-22%	-20%
Cordova	12	13	9	N/S	N/S
Delta Junction	8	8	4	N/S	N/S
Dillingham	36	61	62	72%	2%
Emmonak	1	0	0	N/S	N/S
Fairbanks	574	632	479	-17%	-24%
Fort Yukon	0	0	1	N/S	N/S
Galena	2	0	0	N/S	N/S
Glennallen	11	7	9	N/S	N/S
Haines	0	0	0	N/S	N/S
Homer	64	71	153	139%	115%
Hoonah	1	0	0	N/S	N/S
Hooper Bay	0	0	0	N/S	N/S
Juneau	336	331	370	10%	12%
Kenai	317	352	385	21%	9%
Ketchikan	186	181	186	0%	3%
Kodiak	64	65	41	-36%	-37%
Kotzebue	54	48	76	41%	58%
Naknek	5	5	7	N/S	N/S
Nenana	0	0	0	N/S	N/S
Nome	68	79	90	32%	14%
Palmer	737	773	1,146	55%	48%
Petersburg	17	28	25	47%	-11%
Prince of Wales	31	31	35	13%	13%
Sand Point	0	1	0	N/S	N/S
Seward	10	25	28	N/S	12%
Sitka	91	74	69	-24%	-7%
Skagway	0	0	0	N/S	N/S
St. Mary's ¹	0	0	0	N/S	N/S
St. Paul	0	0	0	N/S	N/S
Tok	1	1	3	N/S	N/S
Unalakleet	0	0	0	N/S	N/S
Unalaska	1	1	3	N/S	N/S
Utqiagvik	54	80	73	35%	-9%
Valdez	12	11	9	N/S	N/S
Wrangell	22	10	23	5%	N/S
Yakutat	0	0	0	N/S	N/S
Total	5,489	5,733	6,589	20%	15%
1st District	684	655	708	4%	8%
2nd District	176	207	239	36%	15%
3rd District	3,795	3,986	4,960	31%	24%
4th District	834	885	682	-18%	-23%

N/S: Numbers 10 or less are not compared statistically.

1. St. Mary's court closed in 2016. Records for filings from the venue are still maintained separately.

**Table 4.15. Domestic Relations Case Filings
FY 22 – FY 24**

Court	FY 22	FY 23	FY 24	Change	
				FY 22 to FY 24	FY 23 to FY 24
Anchorage	1,511	1,539	1,507	0%	-2%
Angoon	1	0	0	N/S	N/S
Aniak	0	0	0	N/S	N/S
Bethel	64	74	78	22%	5%
Cordova	4	5	6	N/S	N/S
Delta Junction	15	15	8	N/S	N/S
Dillingham	17	17	16	-6%	-6%
Emmonak	0	1	0	N/S	N/S
Fairbanks	639	578	597	-7%	3%
Fort Yukon	2	1	0	N/S	N/S
Galena	0	0	1	N/S	N/S
Glennallen	10	16	12	N/S	-25%
Haines	0	0	0	N/S	N/S
Homer	69	58	64	-7%	10%
Hoonah	0	0	0	N/S	N/S
Hooper Bay	0	0	0	N/S	N/S
Juneau	136	125	131	-4%	5%
Kenai	198	221	208	5%	-6%
Ketchikan	93	74	75	-19%	1%
Kodiak	37	48	47	27%	-2%
Kotzebue	50	33	34	-32%	3%
Naknek	7	12	7	N/S	N/S
Nenana	3	6	7	N/S	N/S
Nome	38	39	21	-45%	-46%
Palmer	548	523	533	-3%	2%
Petersburg	6	10	18	N/S	N/S
Prince of Wales	17	18	20	18%	11%
Sand Point	1	0	0	N/S	N/S
Seward	21	14	13	-38%	-7%
Sitka	40	26	36	-10%	38%
Skagway	0	0	0	N/S	N/S
St. Mary's ¹	0	0	0	N/S	N/S
St. Paul	0	0	0	N/S	N/S
Tok	6	4	7	N/S	N/S
Unalakleet	0	0	0	N/S	N/S
Unalaska	3	4	7	N/S	N/S
Utqiagvik	36	38	30	-17%	-21%
Valdez	16	7	23	44%	N/S
Wrangell	12	14	10	N/S	N/S
Yakutat	0	0	0	N/S	N/S
Total	3,600	3,520	3,516	-2%	0%
1st District	305	267	290	-5%	9%
2nd District	124	110	85	-31%	-23%
3rd District	2,442	2,464	2,443	0%	-1%
4th District	729	679	698	-4%	3%

N/S: Numbers 10 or less are not compared statistically.

1. St. Mary's court closed in 2016. Records for filings from the venue are still maintained separately.

**Table 4.16. Domestic Relations Filings by Case Type
FY 24**

Court	Divorce	Dissolution	Support/ custody	Other	Total
Anchorage	648	513	296	50	1,507
Angoon	0	0	0	0	0
Aniak	0	0	0	0	0
Bethel	23	16	19	20	78
Cordova	3	2	1	0	6
Delta Junction	4	3	1	0	8
Dillingham	4	4	3	5	16
Emmonak	0	0	0	0	0
Fairbanks	374	115	75	33	597
Fort Yukon	0	0	0	0	0
Galena	1	0	0	0	1
Glennallen	5	3	3	1	12
Haines	0	0	0	0	0
Homer	28	24	12	0	64
Hoonah	0	0	0	0	0
Hooper Bay	0	0	0	0	0
Juneau	49	48	27	7	131
Kenai	97	73	34	4	208
Ketchikan	40	17	18	0	75
Kodiak	12	23	11	1	47
Kotzebue	6	6	12	10	34
Naknek	4	2	1	0	7
Nenana	3	1	1	2	7
Nome	6	2	9	4	21
Palmer	243	157	108	25	533
Petersburg	6	7	4	1	18
Prince of Wales	7	5	6	2	20
Sand Point	0	0	0	0	0
Seward	2	5	3	3	13
Sitka	16	9	10	1	36
Skagway	0	0	0	0	0
St. Mary's ¹	0	0	0	0	0
St. Paul	0	0	0	0	0
Tok	4	0	1	2	7
Unalakleet	0	0	0	0	0
Unalaska	2	2	3	0	7
Utqiagvik	8	5	12	5	30
Valdez	6	9	7	1	23
Wrangell	4	2	4	0	10
Yakutat	0	0	0	0	0
Total	1,605	1,053	681	177	3,516
% of total	45.6	29.9	19.5	5.0	100.0
1st District	122	88	69	11	290
2nd District	20	13	33	19	85
3rd District	1,054	817	482	90	2,443
4th District	409	135	97	57	698

1. St. Mary's court closed in 2016. Records for filings from the venue are still maintained separately.

**Table 4.17. Domestic Relations Case Dispositions
FY 22 – FY 24**

Court	FY 22	FY 23	FY 24	Change	
				FY 22 to FY 24	FY 23 to FY 24
Anchorage	1,337	1,579	1,444	8%	-9%
Angoon	0	1	0	N/S	N/S
Aniak	0	0	0	N/S	N/S
Bethel	87	66	53	-39%	-20%
Cordova	3	3	3	N/S	N/S
Delta Junction	15	15	8	N/S	N/S
Dillingham	17	20	16	-6%	-20%
Emmonak	0	1	0	N/S	N/S
Fairbanks	598	603	515	-14%	-15%
Fort Yukon	1	2	0	N/S	N/S
Galena	0	0	1	N/S	N/S
Glennallen	13	9	8	N/S	N/S
Haines	0	0	0	N/S	N/S
Homer	58	76	64	10%	-16%
Hoonah	0	0	0	N/S	N/S
Hooper Bay	0	0	0	N/S	N/S
Juneau	136	114	141	4%	24%
Kenai	200	180	210	5%	17%
Ketchikan	77	93	64	-17%	-31%
Kodiak	52	42	48	-8%	14%
Kotzebue	44	44	38	-14%	-14%
Naknek	8	5	12	N/S	N/S
Nenana	6	3	4	N/S	N/S
Nome	40	20	27	-32%	35%
Palmer	473	535	478	1%	-11%
Petersburg	12	11	13	8%	18%
Prince of Wales	19	18	21	11%	17%
Sand Point	0	1	0	N/S	N/S
Seward	17	9	15	-12%	N/S
Sitka	38	31	33	-13%	6%
Skagway	0	0	0	N/S	N/S
St. Mary's ¹	0	0	0	N/S	N/S
St. Paul	0	0	0	N/S	N/S
Tok	7	5	6	N/S	N/S
Unalakleet	0	0	0	N/S	N/S
Unalaska	5	1	6	N/S	N/S
Utqiagvik	38	25	35	-8%	40%
Valdez	19	13	11	-42%	-15%
Wrangell	9	10	12	N/S	N/S
Yakutat	0	0	0	N/S	N/S
Total	3,329	3,535	3,286	-1%	-7%
1st District	291	278	284	-2%	2%
2nd District	122	89	100	-18%	12%
3rd District	2,202	2,473	2,315	5%	-6%
4th District	714	695	587	-18%	-16%

N/S: Numbers 10 or less are not compared statistically.

1. St. Mary's court closed in 2016. Records for filings from the venue are still maintained separately.

**Table 4.18. Domestic Relations Case Dispositions by
Manner of Disposition
FY 24**

Court	Stage of disposition				Total
	Dismissed	Dissolution/ divorce hearing	Trial	Other	
Anchorage	229	823	281	111	1,444
Angoon	0	0	0	0	0
Aniak	0	0	0	0	0
Bethel	21	16	4	12	53
Cordova	0	2	1	0	3
Delta Junction	2	4	2	0	8
Dillingham	4	6	1	5	16
Emmonak	0	0	0	0	0
Fairbanks	74	252	154	35	515
Fort Yukon	0	0	0	0	0
Galena	0	1	0	0	1
Glennallen	1	7	0	0	8
Haines	0	0	0	0	0
Homer	13	42	5	4	64
Hoonah	0	0	0	0	0
Hooper Bay	0	0	0	0	0
Juneau	18	92	19	12	141
Kenai	38	137	25	10	210
Ketchikan	13	32	15	4	64
Kodiak	4	35	6	3	48
Kotzebue	15	13	0	10	38
Naknek	5	4	2	1	12
Nenana	0	1	1	2	4
Nome	8	11	3	5	27
Palmer	69	325	52	32	478
Petersburg	3	8	1	1	13
Prince of Wales	5	13	3	0	21
Sand Point	0	0	0	0	0
Seward	2	6	2	5	15
Sitka	5	24	0	4	33
Skagway	0	0	0	0	0
St. Mary's ¹	0	0	0	0	0
St. Paul	0	0	0	0	0
Tok	0	2	3	1	6
Unalakleet	0	0	0	0	0
Unalaska	1	5	0	0	6
Utqiagvik	10	16	3	6	35
Valdez	0	8	2	1	11
Wrangell	1	7	4	0	12
Yakutat	0	0	0	0	0
Total	541	1,892	589	264	3,286
% of total	16.5	57.6	17.9	8.0	100.0
1st District	45	176	42	21	284
2nd District	33	40	6	21	100
3rd District	366	1,400	377	172	2,315
4th District	97	276	164	50	587

1. St. Mary's court closed in 2016. Records for filings from the venue are still maintained separately.

**Table 4.19. Post-judgment Filings: Motions to Modify
Custody, Support or Visitation
FY 22 – FY 24**

Court	FY 22	FY 23	FY 24	Change	
				FY 22 to FY 24	FY 23 to FY 24
Anchorage	429	407	370	-14%	-9%
Angoon	0	0	0	N/S	N/S
Aniak	0	0	0	N/S	N/S
Bethel	5	5	6	N/S	N/S
Cordova	0	0	0	N/S	N/S
Delta Junction	3	2	3	N/S	N/S
Dillingham	8	7	4	N/S	N/S
Emmonak	0	0	0	N/S	N/S
Fairbanks	130	111	130	0%	17%
Fort Yukon	0	0	0	N/S	N/S
Galena	0	0	0	N/S	N/S
Glennallen	2	1	1	N/S	N/S
Haines	0	0	0	N/S	N/S
Homer	12	15	6	N/S	N/S
Hoonah	0	0	0	N/S	N/S
Hooper Bay	0	0	0	N/S	N/S
Juneau	40	25	29	-27%	16%
Kenai	99	109	78	-21%	-28%
Ketchikan	15	35	15	0%	-57%
Kodiak	2	10	15	N/S	N/S
Kotzebue	8	3	5	N/S	N/S
Naknek	1	0	1	N/S	N/S
Nenana	0	2	0	N/S	N/S
Nome	5	7	3	N/S	N/S
Palmer	201	184	135	-33%	-27%
Petersburg	3	7	4	N/S	N/S
Prince of Wales	9	8	5	N/S	N/S
Sand Point	0	0	0	N/S	N/S
Seward	4	1	2	N/S	N/S
Sitka	8	10	15	N/S	N/S
Skagway	0	0	0	N/S	N/S
St. Mary's ¹	0	0	0	N/S	N/S
St. Paul	0	0	0	N/S	N/S
Tok	0	1	2	N/S	N/S
Unalakleet	0	0	0	N/S	N/S
Unalaska	0	0	0	N/S	N/S
Utqiagvik	6	1	2	N/S	N/S
Valdez	2	2	3	N/S	N/S
Wrangell	2	6	3	N/S	N/S
Yakutat	0	0	0	N/S	N/S
Total	994	959	837	-16%	-13%
1st District	77	91	71	-8%	-22%
2nd District	19	11	10	N/S	N/S
3rd District	760	736	615	-19%	-16%
4th District	138	121	141	2%	17%

N/S: Numbers 10 or less are not compared statistically.

1. St. Mary's court closed in 2016. Records for filings from the venue are still maintained separately.

**Table 4.20. Superior Court General Civil Case Filings
FY 22 – FY 24**

Court	FY 22	FY 23	FY 24	Change	
				FY 22 to FY 24	FY 23 to FY 24
Anchorage	1,101	1,187	1,154	5%	-3%
Angoon	0	0	0	N/S	N/S
Aniak	0	0	1	N/S	N/S
Bethel	44	49	56	27%	14%
Cordova	3	5	3	N/S	N/S
Delta Junction	3	3	9	N/S	N/S
Dillingham	11	9	21	91%	N/S
Emmonak	0	0	1	N/S	N/S
Fairbanks	309	273	302	-2%	11%
Fort Yukon	1	0	0	N/S	N/S
Galena	0	0	0	N/S	N/S
Glennallen	4	8	7	N/S	N/S
Haines	0	0	0	N/S	N/S
Homer	25	45	42	68%	-7%
Hoonah	0	0	0	N/S	N/S
Hooper Bay	0	0	0	N/S	N/S
Juneau	153	116	133	-13%	15%
Kenai	134	127	118	-12%	-7%
Ketchikan	51	31	47	-8%	52%
Kodiak	27	25	24	-11%	-4%
Kotzebue	22	15	16	-27%	7%
Naknek	1	1	1	N/S	N/S
Nenana	4	1	1	N/S	N/S
Nome	16	26	44	175%	69%
Palmer	266	276	290	9%	5%
Petersburg	16	8	7	N/S	N/S
Prince of Wales	6	7	9	N/S	N/S
Sand Point	0	0	0	N/S	N/S
Seward	10	9	14	N/S	N/S
Sitka	22	13	16	-27%	23%
Skagway	0	0	0	N/S	N/S
St. Mary's ¹	0	0	0	N/S	N/S
St. Paul	0	0	0	N/S	N/S
Tok	4	3	7	N/S	N/S
Unalakleet	0	0	0	N/S	N/S
Unalaska	14	7	6	N/S	N/S
Utqiagvik	38	29	27	-29%	-7%
Valdez	11	9	5	N/S	N/S
Wrangell	3	5	5	N/S	N/S
Yakutat	0	1	0	N/S	N/S
Total	2,299	2,288	2,366	3%	3%
1st District	251	181	217	-14%	20%
2nd District	76	70	87	14%	24%
3rd District	1,607	1,708	1,685	5%	-1%
4th District	365	329	377	3%	15%

N/S: Numbers 10 or less are not compared statistically.

1. St. Mary's court closed in 2016. Records for filings from the venue are still maintained separately.

**Table 4.21. Superior Court General Civil Filings by Case Type
FY 24**

Court	Adminis- trative review	Debt/ contract	Tort	Real property/ eviction	Post- conviction relief	Other	Total
Anchorage	114	97	290	65	45	543	1,154
Angeon	0	0	0	0	0	0	0
Aniak	0	0	0	1	0	0	1
Bethel	0	5	4	1	15	31	56
Cordova	0	1	0	1	0	1	3
Delta Junction	1	0	0	1	0	7	9
Dillingham	0	1	2	1	3	14	21
Emmonak	0	0	1	0	0	0	1
Fairbanks	19	23	58	29	15	158	302
Fort Yukon	0	0	0	0	0	0	0
Galena	0	0	0	0	0	0	0
Glennallen	0	0	0	1	0	6	7
Haines	0	0	0	0	0	0	0
Homer	0	5	9	7	1	20	42
Hoonah	0	0	0	0	0	0	0
Hooper Bay	0	0	0	0	0	0	0
Juneau	10	5	28	12	3	75	133
Kenai	11	9	20	9	8	61	118
Ketchikan	3	3	9	5	1	26	47
Kodiak	0	2	3	3	1	15	24
Kotzebue	0	1	3	0	3	9	16
Naknek	0	0	0	1	0	0	1
Nenana	0	0	1	0	0	0	1
Nome	4	2	5	7	7	19	44
Palmer	11	21	69	21	9	159	290
Petersburg	0	0	1	2	0	4	7
Prince of Wales	0	0	1	2	2	4	9
Sand Point	0	0	0	0	0	0	0
Seward	0	0	1	1	1	11	14
Sitka	1	1	1	2	0	11	16
Skagway	0	0	0	0	0	0	0
St. Mary's ¹	0	0	0	0	0	0	0
St. Paul	0	0	0	0	0	0	0
Tok	0	1	1	0	0	5	7
Unalakleet	0	0	0	0	0	0	0
Unalaska	0	1	1	0	0	4	6
Utqiagvik	0	8	8	2	0	9	27
Valdez	0	0	1	2	1	1	5
Wrangell	0	0	2	1	0	2	5
Yakutat	0	0	0	0	0	0	0
Total	174	186	519	177	115	1,195	2,366
% of total	7.4	7.8	21.9	7.5	4.9	50.5	100.0
1st District	14	9	42	24	6	122	217
2nd District	4	11	16	9	10	37	87
3rd District	136	137	396	112	69	835	1,685
4th District	20	29	65	32	30	201	377

1. St. Mary's court closed in 2016. Records for filings from the venue are still maintained separately.

**Table 4.22. Superior Court General Civil Case Types
FY 24**

Administrative Review	Eviction/Real Property
Administrative Appeal	Foreclosure
Appeal from District Court	Quiet Title
Petition for Review	Condemnation
	Forcible Entry and Detainer
	Real Estate Matter
Debt/Contract	Application for Post-conviction Relief
Debt — General	
Other Contract	
Tort	Other
Personal Injury — Auto	Change of Name
Personal Injury — Other	Election Contest or Recount Appeal
Wrongful Death	Injunctive Relief
Property Damage — Auto	Habeas Corpus
Property Damage — Other	Registration of Foreign Judgment
Medical Malpractice	Coroner
Legal Malpractice	Order to Show Cause
Other Malpractice	Contempt
	Other

**Table 4.23. Superior Court General Civil Case Dispositions
FY 22 – FY 24**

Court	FY 22	FY 23	FY 24	Change	
				FY 22 to FY 24	FY 23 to FY 24
Anchorage	1,140	1,162	1,182	4%	2%
Angoon	0	0	0	N/S	N/S
Aniak	0	0	0	N/S	N/S
Bethel	39	48	47	21%	-2%
Cordova	4	4	4	N/S	N/S
Delta Junction	3	5	3	N/S	N/S
Dillingham	11	11	16	45%	45%
Emmonak	0	0	0	N/S	N/S
Fairbanks	292	312	264	-10%	-15%
Fort Yukon	1	0	0	N/S	N/S
Galena	0	0	0	N/S	N/S
Glennallen	4	8	5	N/S	N/S
Haines	0	0	0	N/S	N/S
Homer	37	36	37	0%	3%
Hoonah	0	0	0	N/S	N/S
Hooper Bay	0	0	0	N/S	N/S
Juneau	147	128	141	-4%	10%
Kenai	124	129	119	-4%	-8%
Ketchikan	55	41	39	-29%	-5%
Kodiak	28	25	28	0%	12%
Kotzebue	21	19	10	N/S	N/S
Naknek	0	2	0	N/S	N/S
Nenana	1	5	0	N/S	N/S
Nome	15	16	32	113%	100%
Palmer	256	288	277	8%	-4%
Petersburg	11	11	9	N/S	N/S
Prince of Wales	10	5	7	N/S	N/S
Sand Point	1	1	0	N/S	N/S
Seward	6	11	12	N/S	9%
Sitka	29	18	19	-34%	6%
Skagway	0	1	0	N/S	N/S
St. Mary's ¹	0	0	0	N/S	N/S
St. Paul	0	0	0	N/S	N/S
Tok	3	1	7	N/S	N/S
Unalakleet	0	0	0	N/S	N/S
Unalaska	11	7	7	N/S	N/S
Utqiagvik	34	27	18	-47%	-33%
Valdez	11	9	3	N/S	N/S
Wrangell	4	3	2	N/S	N/S
Yakutat	0	1	0	N/S	N/S
Total	2,298	2,334	2,288	0%	-2%
1st District	256	208	217	-15%	4%
2nd District	70	62	60	-14%	-3%
3rd District	1,633	1,693	1,690	3%	0%
4th District	339	371	321	-5%	-13%

N/S: Numbers 10 or less are not compared statistically.

1. St. Mary's court closed in 2016. Records for filings from the venue are still maintained separately.

**Table 4.24. Superior Court General Civil Case Dispositions
by Manner of Disposition
FY 24**

Court	Stage of disposition						Total
	Dismiss/ settle	Default judgment	Summary judgment	Court trial	Jury trial	Other	
Anchorage	578	27	47	1	2	527	1,182
Angeon	0	0	0	0	0	0	0
Aniak	0	0	0	0	0	0	0
Bethel	20	1	2	0	0	24	47
Cordova	2	0	0	0	0	2	4
Delta Junction	0	0	0	0	0	3	3
Dillingham	3	0	2	0	0	11	16
Emmonak	0	0	0	0	0	0	0
Fairbanks	97	15	19	1	1	131	264
Fort Yukon	0	0	0	0	0	0	0
Galena	0	0	0	0	0	0	0
Glennallen	1	0	0	0	0	4	5
Haines	0	0	0	0	0	0	0
Homer	13	1	2	1	0	20	37
Hoonah	0	0	0	0	0	0	0
Hooper Bay	0	0	0	0	0	0	0
Juneau	54	6	9	0	0	72	141
Kenai	55	4	4	1	0	55	119
Ketchikan	16	1	6	1	0	15	39
Kodiak	12	0	3	1	0	12	28
Kotzebue	3	0	0	0	0	7	10
Naknek	0	0	0	0	0	0	0
Nenana	0	0	0	0	0	0	0
Nome	14	3	1	0	0	14	32
Palmer	104	10	9	5	1	148	277
Petersburg	3	2	0	0	1	3	9
Prince of Wales	1	0	0	1	0	5	7
Sand Point	0	0	0	0	0	0	0
Seward	3	0	0	0	0	9	12
Sitka	6	1	1	0	0	11	19
Skagway	0	0	0	0	0	0	0
St. Mary's ¹	0	0	0	0	0	0	0
St. Paul	0	0	0	0	0	0	0
Tok	2	0	0	0	0	5	7
Unalakleet	0	0	0	0	0	0	0
Unalaska	2	1	1	0	0	3	7
Utqiagvik	10	0	0	0	0	8	18
Valdez	1	0	0	0	0	2	3
Wrangell	2	0	0	0	0	0	2
Yakutat	0	0	0	0	0	0	0
Total	1,002	72	106	12	5	1,091	2,288
% of total	43.8	3.2	4.6	0.5	0.2	47.7	100.0
1st District	82	10	16	2	1	106	217
2nd District	27	3	1	0	0	29	60
3rd District	774	43	68	9	3	793	1,690
4th District	119	16	21	1	1	163	321

1. St. Mary's court closed in 2016. Records for filings from the venue are still maintained separately.

**Table 4.25. CINA Case Filings
FY 22 – FY 24**

Court	FY 22	FY 23	FY 24	Change	
				FY 22 to FY 24	FY 23 to FY 24
Anchorage	780	736	701	-10%	-5%
Angoon	0	0	0	N/S	N/S
Aniak	3	9	14	N/S	N/S
Bethel	159	107	122	-23%	14%
Cordova	7	4	0	N/S	N/S
Delta Junction	0	0	0	N/S	N/S
Dillingham	68	48	56	-18%	17%
Emmonak	21	24	11	-48%	-54%
Fairbanks	222	230	188	-15%	-18%
Fort Yukon	0	0	0	N/S	N/S
Galena	0	1	0	N/S	N/S
Glennallen	28	13	5	N/S	N/S
Haines	0	0	0	N/S	N/S
Homer	21	15	44	110%	193%
Hoonah	0	0	0	N/S	N/S
Hooper Bay	6	16	17	N/S	6%
Juneau	85	69	47	-45%	-32%
Kenai	96	63	116	21%	84%
Ketchikan	54	29	73	35%	152%
Kodiak	25	23	15	-40%	-35%
Kotzebue	94	45	49	-48%	9%
Naknek	7	4	5	N/S	N/S
Nenana	0	0	0	N/S	N/S
Nome	40	46	35	-12%	-24%
Palmer	377	323	245	-35%	-24%
Petersburg	5	3	3	N/S	N/S
Prince of Wales	7	5	4	N/S	N/S
Sand Point	0	0	0	N/S	N/S
Seward	16	12	17	6%	42%
Sitka	24	0	12	-50%	N/S
Skagway	0	0	0	N/S	N/S
St. Mary's ¹	18	11	14	-22%	27%
St. Paul	3	0	4	N/S	N/S
Tok	0	1	1	N/S	N/S
Unalakleet	0	2	0	N/S	N/S
Unalaska	0	0	0	N/S	N/S
Utqiagvik	56	55	38	-32%	-31%
Valdez	11	7	4	N/S	N/S
Wrangell	0	0	1	N/S	N/S
Yakutat	0	0	0	N/S	N/S
Total	2,233	1,901	1,841	-18%	-3%
1st District	175	106	140	-20%	32%
2nd District	190	148	122	-36%	-18%
3rd District	1,439	1,248	1,212	-16%	-3%
4th District	429	399	367	-14%	-8%

N/S: Numbers 10 or less are not compared statistically.

1. St. Mary's court closed in 2016. Records for filings from the venue are still maintained separately.

**Table 4.26. Delinquency Case Filings
FY 22 – FY 24**

Court	FY 22	FY 23	FY 24	Change	
				FY 22 to FY 24	FY 23 to FY 24
Anchorage	254	223	313	23%	40%
Angeon	0	0	0	N/S	N/S
Aniak	4	13	3	N/S	N/S
Bethel	38	41	41	8%	0%
Cordova	3	3	1	N/S	N/S
Delta Junction	1	0	1	N/S	N/S
Dillingham	7	0	0	N/S	N/S
Emmonak	4	3	5	N/S	N/S
Fairbanks	29	50	43	48%	-14%
Fort Yukon	0	1	0	N/S	N/S
Galena	0	0	0	N/S	N/S
Glennallen	1	1	0	N/S	N/S
Haines	0	0	0	N/S	N/S
Homer	9	7	1	N/S	N/S
Hoonah	0	0	0	N/S	N/S
Hooper Bay	3	11	5	N/S	N/S
Juneau	41	34	41	0%	21%
Kenai	37	44	36	-3%	-18%
Ketchikan	13	10	9	N/S	N/S
Kodiak	13	4	6	N/S	N/S
Kotzebue	6	19	10	N/S	N/S
Naknek	2	0	0	N/S	N/S
Nenana	2	0	0	N/S	N/S
Nome	19	8	15	-21%	N/S
Palmer	71	74	81	14%	9%
Petersburg	0	0	1	N/S	N/S
Prince of Wales	2	3	1	N/S	N/S
Sand Point	0	0	0	N/S	N/S
Seward	2	1	2	N/S	N/S
Sitka	18	11	18	0%	64%
Skagway	0	0	0	N/S	N/S
St. Mary's ¹	4	3	3	N/S	N/S
St. Paul	2	0	0	N/S	N/S
Tok	1	0	0	N/S	N/S
Unalakleet	0	0	0	N/S	N/S
Unalaska	0	0	0	N/S	N/S
Utqiagvik	14	12	19	36%	58%
Valdez	1	7	8	N/S	N/S
Wrangell	0	0	0	N/S	N/S
Yakutat	0	0	0	N/S	N/S
Total	601	583	663	10%	14%
1st District	74	58	70	-5%	21%
2nd District	39	39	44	13%	13%
3rd District	402	364	448	11%	23%
4th District	86	122	101	17%	-17%

N/S: Numbers 10 or less are not compared statistically.

1. St. Mary's court closed in 2016. Records for filings from the venue are still maintained separately.

**Table 4.27. CINA and Delinquency Filings by Case Type
FY 24**

Court	Child in Need of Aid	Petitions to terminate parental rights		Total	Delinquency	Petitions to revoke probation		Total
Anchorage	431	270		701	266	47		313
Angoon	0	0		0	0	0		0
Aniak	14	0		14	1	2		3
Bethel	93	29		122	30	11		41
Cordova	0	0		0	0	1		1
Delta Junction	0	0		0	1	0		1
Dillingham	12	44		56	0	0		0
Emmonak	11	0		11	5	0		5
Fairbanks	135	53		188	28	15		43
Fort Yukon	0	0		0	0	0		0
Galena	0	0		0	0	0		0
Glennallen	5	0		5	0	0		0
Haines	0	0		0	0	0		0
Homer	33	11		44	1	0		1
Hoonah	0	0		0	0	0		0
Hooper Bay	17	0		17	1	4		5
Juneau	38	9		47	34	7		41
Kenai	81	35		116	34	2		36
Ketchikan	49	24		73	8	1		9
Kodiak	11	4		15	4	2		6
Kotzebue	35	14		49	5	5		10
Naknek	4	1		5	0	0		0
Nenana	0	0		0	0	0		0
Nome	28	7		35	12	3		15
Palmer	160	85		245	78	3		81
Petersburg	3	0		3	1	0		1
Prince of Wales	2	2		4	1	0		1
Sand Point	0	0		0	0	0		0
Seward	2	15		17	2	0		2
Sitka	4	8		12	7	11		18
Skagway	0	0		0	0	0		0
St. Mary's ¹	2	12		14	3	0		3
St. Paul	4	0		4	0	0		0
Tok	1	0		1	0	0		0
Unalakleet	0	0		0	0	0		0
Unalaska	0	0		0	0	0		0
Utqiagvik	32	6		38	16	3		19
Valdez	4	0		4	4	4		8
Wrangell	1	0		1	0	0		0
Yakutat	0	0		0	0	0		0
Total	1,212	629		1,841	542	121		663
% of total	65.8	34.2		100.0	81.7	18.3		100.0
1st District	97	43		140	51	19		70
2nd District	95	27		122	33	11		44
3rd District	747	465		1,212	389	59		448
4th District	273	94		367	69	32		101

1. St. Mary's court closed in 2016. Records for filings from the venue are still maintained separately.



*District Court
Activity*

Sea lions and skiff, Fritz Cove (First Judicial District)



Unalaska Island (Third Judicial District)

**Table 5.01. Total District Court Case Filings
FY 22 – FY 24**

Court	FY 22	FY 23	FY 24	Change	
				FY 22 to FY 24	FY 23 to FY 24
Anchorage¹	36,006	29,870	30,192	-16%	1%
Angoon	9	9	9	N/S	N/S
Aniak	73	90	72	-1%	-20%
Bethel	1,103	1,001	1,176	7%	17%
Cordova	124	125	128	3%	2%
Delta Junction	786	529	533	-32%	1%
Dillingham	461	421	429	-7%	2%
Emmonak	118	85	96	-19%	13%
Fairbanks	8,717	8,658	8,694	0%	0%
Fort Yukon	56	48	38	-32%	-21%
Galena	50	47	23	-54%	-51%
Glennallen	611	412	295	-52%	-28%
Haines	125	143	135	8%	-6%
Homer	1,616	1,949	1,826	13%	-6%
Hoonah	42	50	42	0%	-16%
Hooper Bay	96	86	67	-30%	-22%
Juneau	3,646	3,291	2,842	-22%	-14%
Kenai	7,443	4,447	4,563	-39%	3%
Ketchikan	1,598	1,508	1,385	-13%	-8%
Kodiak	960	1,046	1,031	7%	-1%
Kotzebue	487	451	518	6%	15%
Naknek	307	239	219	-29%	-8%
Nenana	2,383	1,626	1,994	-16%	23%
Nome	726	807	843	16%	4%
Palmer	11,527	8,439	9,943	-14%	18%
Petersburg	237	177	196	-17%	11%
Prince of Wales	730	699	436	-40%	-38%
Sand Point	46	32	52	13%	63%
Seward	1,941	1,805	1,485	-23%	-18%
Sitka	557	600	488	-12%	-19%
Skagway	26	34	33	27%	-3%
St. Mary's ²	149	73	75	-50%	3%
St. Paul	11	10	0	N/S	N/S
Tok	281	372	803	186%	116%
Unalakleet	150	164	93	-38%	-43%
Unalaska	266	237	319	20%	35%
Utqiagvik	587	598	493	-16%	-18%
Valdez	245	229	350	43%	53%
Wrangell	140	158	137	-2%	-13%
Yakutat	39	23	29	-26%	26%
Total	84,475	70,588	72,082	-15%	2%
1st District	7,149	6,692	5,732	-20%	-14%
2nd District	1,950	2,020	1,947	0%	-4%
3rd District	61,564	49,261	50,832	-17%	3%
4th District	13,812	12,615	13,571	-2%	8%

N/S: Numbers 10 or less are not compared statistically.

1. The FY22 numbers also include numbers for minor citations previously unreported from the period April 30, 2021 through June 30, 2021.

2. St. Mary's court closed in 2016. Records for filings from the venue are still maintained separately.

**Table 5.02. Total District Court Case Dispositions
FY 22 – FY 24**

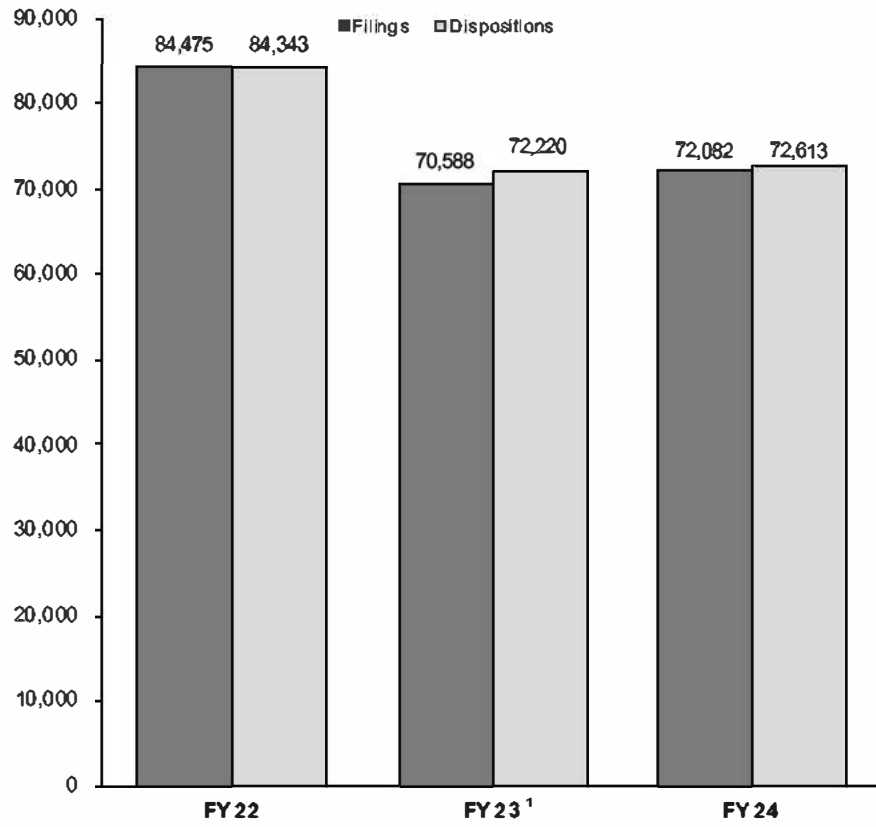
Court	FY 22	FY 23	FY 24	Change	
				FY 22 to FY 24	FY 23 to FY 24
Anchorage¹	35,722	30,444	30,548	-14%	0%
Angoon	9	20	8	N/S	N/S
Aniak	71	102	70	-1%	-31%
Bethel	1,158	1,159	1,142	-1%	-1%
Cordova	158	114	110	-30%	-4%
Delta Junction	747	565	529	-29%	-6%
Dillingham	496	427	433	-13%	1%
Emmonak	107	127	80	-25%	-37%
Fairbanks	8,752	8,509	8,222	-6%	-3%
Fort Yukon	76	45	35	-54%	-22%
Galena	48	45	30	-37%	-33%
Glennallen	602	461	320	-47%	-31%
Haines	100	151	126	26%	-17%
Homer	1,525	1,964	2,005	31%	2%
Hoonah	41	53	43	5%	-19%
Hooper Bay	107	109	55	-49%	-50%
Juneau	3,821	3,236	2,579	-33%	-20%
Kenai	7,116	4,891	4,631	-35%	-5%
Ketchikan	1,535	1,497	1,437	-6%	-4%
Kodiak	949	811	1,259	33%	55%
Kotzebue	523	499	610	17%	22%
Naknek	315	264	242	-23%	-8%
Nenana	2,428	1,829	1,755	-28%	-4%
Nome	861	737	982	14%	33%
Palmer	11,766	8,689	10,275	-13%	18%
Petersburg	258	192	198	-23%	3%
Prince of Wales	776	728	451	-42%	-38%
Sand Point	48	54	66	38%	22%
Seward	1,764	1,832	1,558	-12%	-15%
Sitka	586	589	489	-17%	-17%
Skagway	24	33	27	13%	-18%
St. Mary's ²	165	124	69	-58%	-44%
St. Paul	12	20	7	N/S	N/S
Tok	293	334	779	166%	133%
Unalakleet	105	150	169	61%	13%
Unalaska	219	329	313	43%	-5%
Utqiagvik	663	694	502	-24%	-28%
Valdez	220	219	283	29%	29%
Wrangell	142	146	147	4%	1%
Yakutat	35	28	29	-17%	4%
Total	84,343	72,220	72,613	-14%	1%
1st District	7,327	6,673	5,534	-24%	-17%
2nd District	2,152	2,080	2,263	5%	9%
3rd District	60,912	50,519	52,050	-15%	3%
4th District	13,952	12,948	12,766	-9%	-1%

N/S: Numbers 10 or less are not compared statistically.

1. The FY22 numbers also include numbers for minor citations previously unreported from the period April 30, 2021 through June 30, 2021.

2. St. Mary's court closed in 2016. Records for filings from the venue are still maintained separately.

**Figure 5.01. District Court Filing and Disposition Trends
FY 22 – FY 24**



1. The FY22 numbers also include numbers for minor citations previously unreported from the period April 30, 2021 through June 30, 2021.

**Table 5.03. District Court Clearance Rates
FY 23 – FY 24**

Court	Non-minor offense filings		Minor offense filings ¹		Total filings		Clearance rates	
	FY 24	Change from FY 23	FY 24	Change from FY 23	FY 24	Change from FY 23	FY 23	FY 24
Anchorage ¹	14,776	1%	15,416	2%	30,192	1%	102%	101%
Angeon	9	N/S	0	N/S	9	N/S	N/S	N/S
Aniak	52	-30%	20	25%	72	-20%	113%	97%
Bethel	958	4%	218	160%	1,176	17%	116%	97%
Cordova	60	-5%	68	10%	128	2%	91%	86%
Delta Junction	96	2%	437	0%	533	1%	107%	99%
Dillingham	303	-4%	126	21%	429	2%	101%	101%
Emmonak	94	15%	2	N/S	96	13%	149%	83%
Fairbanks	3,888	4%	4,806	-2%	8,694	0%	98%	95%
Fort Yukon	37	-5%	1	N/S	38	-21%	94%	92%
Galena	20	-57%	3	N/S	23	-51%	96%	130%
Glennallen	102	3%	193	-38%	295	-28%	112%	108%
Haines	58	-13%	77	1%	135	-6%	106%	93%
Homer	647	-2%	1,179	-9%	1,826	-6%	101%	110%
Hoonah	35	13%	7	N/S	42	-16%	106%	102%
Hooper Bay	67	-22%	0	N/S	67	-22%	127%	82%
Juneau	1,694	-3%	1,148	-25%	2,842	-14%	98%	91%
Kenai	1,862	8%	2,701	-1%	4,563	3%	110%	101%
Ketchikan	1,025	-11%	360	2%	1,385	-8%	99%	104%
Kodiak	412	-7%	619	2%	1,031	-1%	78%	122%
Kotzebue	438	8%	80	74%	518	15%	111%	118%
Naknek	157	12%	62	-37%	219	-8%	110%	111%
Nenana	114	34%	1,880	22%	1,994	23%	112%	88%
Nome	659	4%	184	7%	843	4%	91%	116%
Palmer	4,530	7%	5,413	29%	9,943	18%	103%	103%
Petersburg	100	47%	96	-12%	196	11%	108%	101%
Prince of Wales	208	-37%	228	-38%	436	-38%	104%	103%
Sand Point	36	50%	16	N/S	52	63%	169%	127%
Seward	252	-15%	1,233	-18%	1,485	-18%	101%	105%
Sitka	272	-7%	216	-30%	488	-19%	98%	100%
Skagway	20	-5%	13	0%	33	-3%	97%	82%
St. Mary's ¹	74	7%	1	N/S	75	3%	170%	92%
St. Paul	0	N/S	0	N/S	0	N/S	N/S	N/S
Tok	122	7%	681	164%	803	116%	90%	97%
Unalakleet	92	-30%	1	N/S	93	-43%	91%	182%
Unalaska	80	14%	239	43%	319	35%	139%	98%
Utqiagvik	407	-5%	86	-50%	493	-18%	116%	102%
Valdez	203	60%	147	44%	350	53%	96%	81%
Wrangell	65	-25%	72	1%	137	-13%	92%	107%
Yakutat	22	29%	7	N/S	29	26%	122%	100%
Total	34,046	1%	38,036	3%	72,082	2%	102%	101%
1st District	3,508	-8%	2,224	-22%	5,732	-14%	100%	97%
2nd District	1,596	0%	351	-17%	1,947	-4%	103%	116%
3rd District	23,420	2%	27,412	4%	50,832	3%	103%	102%
4th District	5,522	3%	8,049	11%	13,571	8%	103%	94%

Clearance rate measures whether a court is keeping up with its incoming caseload. Courts aspire to clear (i.e., dispose of) at least as many cases as have been filed in a period by having a clearance rate of 100 percent or higher.

N/S: Numbers 10 or less are not compared statistically.

1. St. Mary's court closed in 2016. Records for filings from the venue are still maintained separately.

**Table 5.04. District Court Filings by Case Type
FY 24**

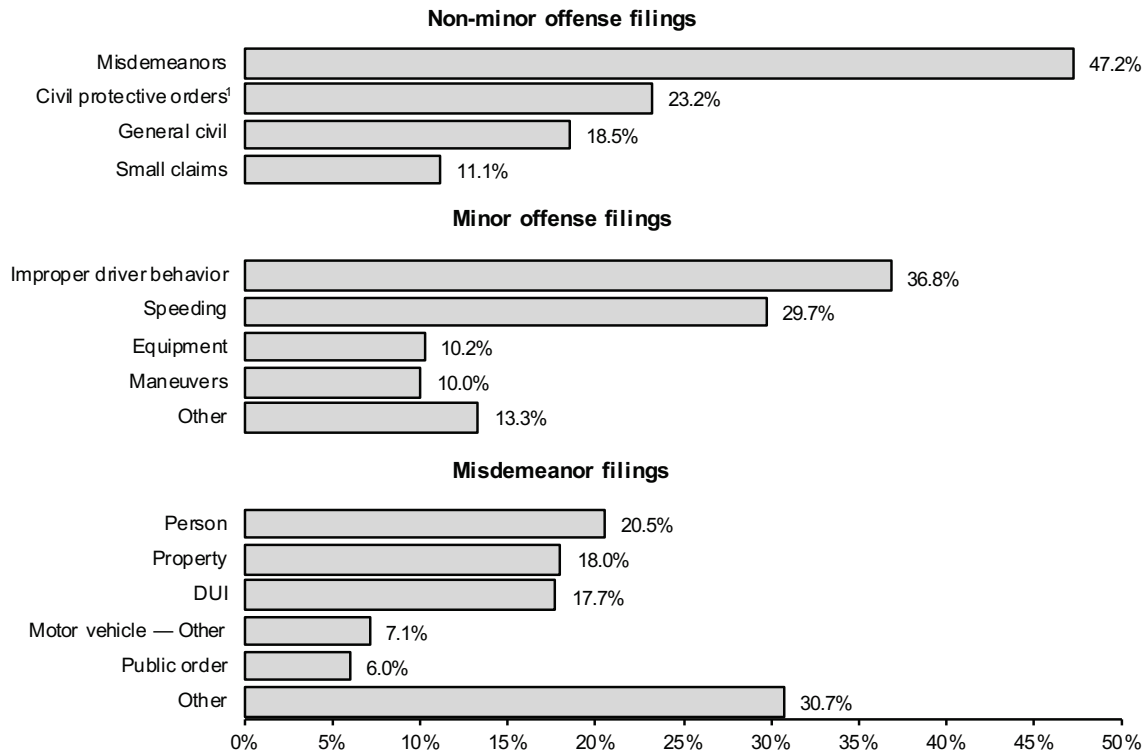
Court	Misdemeanor	Minor offense	Civil			Total
			Small claims	Civil protective orders ¹	General civil	
Anchorage	5,899	15,416	1,906	3,326	3,645	30,192
Angeon	4	0	0	5	0	9
Aniak	30	20	0	20	2	72
Bethel	577	218	31	313	37	1,176
Cordova	42	68	3	7	8	128
Delta Junction	43	437	9	36	8	533
Dillingham	202	126	15	75	11	429
Emmonak	57	2	2	34	1	96
Fairbanks	1,824	4,806	482	820	762	8,694
Fort Yukon	22	1	5	10	0	38
Galena	10	3	1	7	2	23
Glennallen	62	193	8	25	7	295
Haines	19	77	7	24	8	135
Homer	361	1,179	67	157	62	1,826
Hoonah	18	7	1	13	3	42
Hooper Bay	52	0	0	15	0	67
Juneau	1,097	1,148	119	246	232	2,842
Kenai	991	2,701	182	444	245	4,563
Ketchikan	588	360	161	161	115	1,385
Kodiak	232	619	47	71	62	1,031
Kotzebue	282	80	22	116	18	518
Naknek	133	62	1	15	8	219
Nenana	70	1,880	9	23	12	1,994
Nome	432	184	32	163	32	843
Palmer	1,883	5,413	578	1,235	834	9,943
Petersburg	50	96	10	28	12	196
Prince of Wales	133	228	4	54	17	436
Sand Point	32	16	0	4	0	52
Seward	184	1,233	14	29	25	1,485
Sitka	130	216	11	86	45	488
Skagway	15	13	0	1	4	33
St. Mary's ²	46	1	1	27	0	75
St. Paul	0	0	0	0	0	0
Tok	81	681	6	30	5	803
Unalakleet	79	1	6	7	0	93
Unalaska	56	239	3	4	17	319
Utqiagvik	176	86	20	178	33	493
Valdez	113	147	7	61	22	350
Wrangell	35	72	5	16	9	137
Yakutat	15	7	2	3	2	29
Total	16,075	38,036	3,777	7,889	6,305	72,082
% of total	22.3	52.8	5.2	10.9	8.8	100.0
1st District	2,104	2,224	320	637	447	5,732
2nd District	969	351	80	464	83	1,947
3rd District	10,190	27,412	2,831	5,453	4,946	50,832
4th District	2,812	8,049	546	1,335	829	13,571

1. The Civil Protective Order case group includes petitions for domestic violence, stalking, and sexual assault protective orders.

2. St. Mary's court closed in 2016. Records for filings from the venue are still maintained separately.

**Figure 5.02. Composition of District Court Case Filings
FY 24**

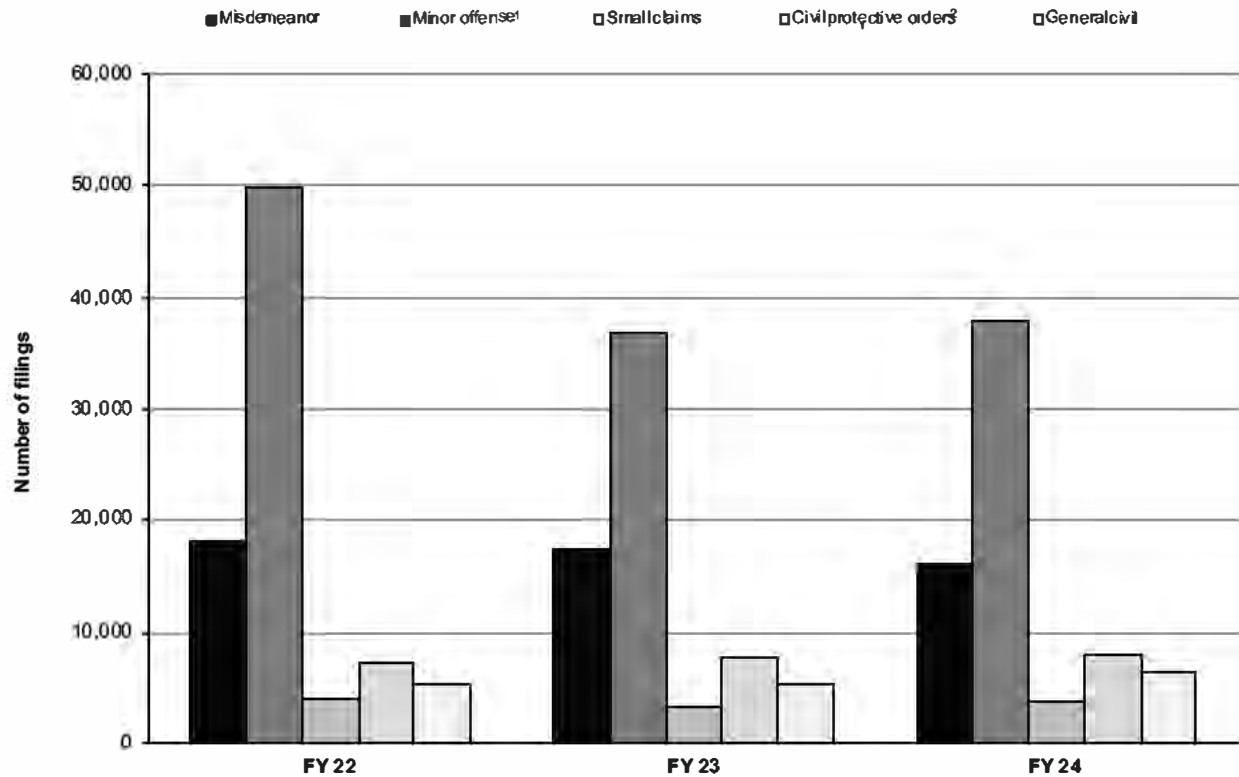
Percentages within categories.



This chart analyzes the composition of cases filed in District Court during FY24. Misdemeanor cases represent approximately 47.2% of the non-minor offense caseload. Approximately 25.1% of all misdemeanor cases involve driving while intoxicated or another criminal traffic violation (for example, driving with suspended license).

1. The Civil Protective Order case group includes petitions for domestic violence, stalking and sexual assault protective orders.

**Figure 5.03. District Court Filing Trends by Case Type
FY 22 – FY 24**



Filing Type	FY 22	FY 23	FY 24	FY 22 to FY 24 change	FY 23 to FY 24 change
Misdemeanor	18,076	17,339	16,075	-11%	-7%
Minor offense ¹	49,804	36,911	38,036	-24%	3%
Small claims	3,896	3,258	3,777	-3%	16%
Civil protective orders ²	7,333	7,765	7,889	8%	2%
General civil	5,366	5,315	6,305	17%	19%
Total	84,475	70,588	72,082	-15%	2%

1. The FY22 numbers also include numbers for minor citations previously unreported from the period April 30, 2021 through June 30, 2021.

2. The Civil Protective Order case group includes petitions for domestic violence, stalking, and sexual assault protective orders.

**Table 5.05. District Court Dispositions by Case Type
FY 24**

Court	Misdemeanor	Minor offense	Civil			Total
			Small claims	Civil protective orders ¹	General civil	
Anchorage¹	7,218	15,079	1,818	3,263	3,170	30,548
Angeon	3	0	0	5	0	8
Aniak	35	18	0	17	0	70
Bethel	589	176	29	314	34	1,142
Cordova	42	57	0	7	4	110
Delta Junction	46	434	8	36	5	529
Dillingham	201	134	17	71	10	433
Emmonak	55	2	0	23	0	80
Fairbanks	1,622	4,869	452	760	519	8,222
Fort Yukon	21	1	3	9	1	35
Galena	20	0	1	7	2	30
Glennallen	74	206	6	26	8	320
Haines	19	69	7	22	9	126
Homer	429	1,306	63	154	53	2,005
Hoonah	20	8	1	13	1	43
Hooper Bay	47	0	0	8	0	55
Juneau	1,035	943	163	250	188	2,579
Kenai	1,146	2,659	174	439	213	4,631
Ketchikan	666	332	170	159	110	1,437
Kodiak	285	815	43	71	45	1,259
Kotzebue	372	88	15	121	14	610
Naknek	153	67	1	14	7	242
Nenana	42	1,678	10	19	6	1,755
Nome	489	283	28	161	21	982
Palmer	2,185	5,358	939	1,230	563	10,275
Petersburg	52	97	9	28	12	198
Prince of Wales	144	224	8	54	21	451
Sand Point	52	9	0	4	1	66
Seward	202	1,289	11	29	27	1,558
Sitka	138	215	10	83	43	489
Skagway	11	11	3	1	1	27
St. Mary's ²	47	0	0	22	0	69
St. Paul	7	0	0	0	0	7
Tok	82	654	9	29	5	779
Unalakleet	140	21	3	5	0	169
Unalaska	92	205	5	5	6	313
Utqiagvik	208	71	6	204	13	502
Valdez	71	140	6	50	16	283
Wrangell	31	82	6	15	13	147
Yakutat	15	8	0	3	3	29
Total	18,106	37,608	4,024	7,731	5,144	72,613
% of total	24.9	51.8	5.5	10.7	7.1	100.0
1st District	2,134	1,989	377	633	401	5,534
2nd District	1,209	463	52	491	48	2,263
3rd District	12,157	27,324	3,083	5,363	4,123	52,050
4th District	2,606	7,832	512	1,244	572	12,766

1. The Civil Protective Order case group includes petitions for domestic violence, stalking, and sexual assault protective orders.

2. St. Mary's court closed in 2016. Records for filings from the venue are still maintained separately.

**Table 5.06. District Court Non-Minor Offense Case Filings
FY 22 – FY 24**

Court	FY 22	FY 23	FY 24	Change	
				FY 22 to FY 24	FY 23 to FY 24
Anchorage	14,465	14,692	14,776	2%	1%
Angoon	9	8	9	N/S	N/S
Aniak	54	74	52	-4%	-30%
Bethel	1,014	917	958	-6%	4%
Cordova	54	63	60	11%	-5%
Delta Junction	95	94	96	1%	2%
Dillingham	374	317	303	-19%	-4%
Emmonak	113	82	94	-17%	15%
Fairbanks	4,168	3,740	3,888	-7%	4%
Fort Yukon	53	39	37	-30%	-5%
Galena	46	46	20	-57%	-57%
Glennallen	116	99	102	-12%	3%
Haines	52	67	58	12%	-13%
Homer	661	659	647	-2%	-2%
Hoonah	20	31	35	75%	13%
Hooper Bay	94	86	67	-29%	-22%
Juneau	1,774	1,755	1,694	-5%	-3%
Kenai	1,933	1,718	1,862	-4%	8%
Ketchikan	1,187	1,154	1,025	-14%	-11%
Kodiak	362	441	412	14%	-7%
Kotzebue	440	405	438	0%	8%
Naknek	214	140	157	-27%	12%
Nenana	98	85	114	16%	34%
Nome	558	635	659	18%	4%
Palmer	4,305	4,247	4,530	5%	7%
Petersburg	133	68	100	-25%	47%
Prince of Wales	347	332	208	-40%	-37%
Sand Point	38	24	36	-5%	50%
Seward	317	296	252	-21%	-15%
Sitka	299	291	272	-9%	-7%
Skagway	20	21	20	0%	-5%
St. Mary's ¹	146	69	74	-49%	7%
St. Paul	10	9	0	N/S	N/S
Tok	104	114	122	17%	7%
Unalakleet	137	131	92	-33%	-30%
Unalaska	87	70	80	-8%	14%
Utqiagvik	518	427	407	-21%	-5%
Valdez	153	127	203	33%	60%
Wrangell	81	87	65	-20%	-25%
Yakutat	22	17	22	0%	29%
Total	34,671	33,677	34,046	-2%	1%
1st District	3,944	3,831	3,508	-11%	-8%
2nd District	1,653	1,598	1,596	-3%	0%
3rd District	23,089	22,902	23,420	1%	2%
4th District	5,985	5,346	5,522	-8%	3%

N/S: Numbers 10 or less are not compared statistically.

1. St. Mary's court closed in 2016. Records for filings from the venue are still maintained separately.

**Table 5.07. District Court Non-Minor Offense Case Dispositions
FY 22 – FY 24**

Court	FY 22	FY 23	FY 24	Change	
				FY 22 to FY 24	FY 23 to FY 24
Anchorage	14,172	15,255	15,469	9%	1%
Angoon	9	18	8	N/S	N/S
Aniak	55	84	52	-5%	-38%
Bethel	1,067	1,084	966	-9%	-11%
Cordova	78	54	53	-32%	-2%
Delta Junction	102	96	95	-7%	-1%
Dillingham	406	320	299	-26%	-7%
Emmonak	99	125	78	-21%	-38%
Fairbanks	4,278	3,907	3,353	-22%	-14%
Fort Yukon	71	36	34	-52%	-6%
Galena	44	44	30	-32%	-32%
Glennallen	147	81	114	-22%	41%
Haines	40	71	57	43%	-20%
Homer	641	717	699	9%	-3%
Hoonah	25	29	35	40%	21%
Hooper Bay	106	107	55	-48%	-49%
Juneau	1,895	2,122	1,636	-14%	-23%
Kenai	1,963	1,987	1,972	0%	-1%
Ketchikan	1,191	1,093	1,105	-7%	1%
Kodiak	363	404	444	22%	10%
Kotzebue	462	471	522	13%	11%
Naknek	216	166	175	-19%	5%
Nenana	117	94	77	-34%	-18%
Nome	698	629	699	0%	11%
Palmer	4,699	4,710	4,917	5%	4%
Petersburg	152	76	101	-34%	33%
Prince of Wales	372	340	227	-39%	-33%
Sand Point	42	36	57	36%	58%
Seward	310	293	269	-13%	-8%
Sitka	316	304	274	-13%	-10%
Skagway	18	22	16	-11%	-27%
St. Mary's ¹	161	120	69	-57%	-42%
St. Paul	10	19	7	N/S	N/S
Tok	114	94	125	10%	33%
Unalakleet	87	122	148	70%	21%
Unalaska	90	116	108	20%	-7%
Utqiagvik	603	524	431	-29%	-18%
Valdez	157	129	143	-9%	11%
Wrangell	81	90	65	-20%	-28%
Yakutat	17	24	21	24%	-12%
Total	35,474	36,013	35,005	-1%	-3%
1st District	4,116	4,189	3,545	-14%	-15%
2nd District	1,850	1,746	1,800	-3%	3%
3rd District	23,294	24,287	24,726	6%	2%
4th District	6,214	5,791	4,934	-21%	-15%

N/S: Numbers 10 or less are not compared statistically.

1. St. Mary's court closed in 2016. Records for filings from the venue are still maintained separately.

**Table 5.08. Misdemeanor Case Filings
FY 22 – FY 24**

Court	FY 22	FY 23	FY 24	Change	
				FY 22 to FY 24	FY 23 to FY 24
Anchorage	6,736	6,606	5,899	-12%	-11%
Angoon	4	3	4	N/S	N/S
Aniak	35	49	30	-14%	-39%
Bethel	669	530	577	-14%	9%
Cordova	31	40	42	35%	5%
Delta Junction	33	39	43	30%	10%
Dillingham	243	213	202	-17%	-5%
Emmonak	76	54	57	-25%	6%
Fairbanks	2,244	1,935	1,824	-19%	-6%
Fort Yukon	44	33	22	-50%	-33%
Galena	27	32	10	N/S	N/S
Glennallen	79	68	62	-22%	-9%
Haines	30	25	19	-37%	-24%
Homer	428	415	361	-16%	-13%
Hoonah	11	14	18	64%	29%
Hooper Bay	53	65	52	-2%	-20%
Juneau	1,055	1,102	1,097	4%	0%
Kenai	1,094	998	991	-9%	-1%
Ketchikan	706	692	588	-17%	-15%
Kodiak	194	309	232	20%	-25%
Kotzebue	305	269	282	-8%	5%
Naknek	186	112	133	-28%	19%
Nenana	60	51	70	17%	37%
Nome	395	448	432	9%	-4%
Palmer	1,814	1,919	1,883	4%	-2%
Petersburg	69	39	50	-28%	28%
Prince of Wales	260	213	133	-49%	-38%
Sand Point	25	22	32	28%	45%
Seward	236	240	184	-22%	-23%
Sitka	147	150	130	-12%	-13%
Skagway	7	15	15	N/S	0%
St. Mary's ¹	123	59	46	-63%	-22%
St. Paul	5	9	0	N/S	N/S
Tok	66	67	81	23%	21%
Unalakleet	120	127	79	-34%	-38%
Unalaska	62	53	56	-10%	6%
Utqiagvik	271	199	176	-35%	-12%
Valdez	81	73	113	40%	55%
Wrangell	43	43	35	-19%	-19%
Yakutat	9	9	15	N/S	N/S
Total	18,076	17,339	16,075	-11%	-7%
1st District	2,341	2,305	2,104	-10%	-9%
2nd District	1,091	1,043	969	-11%	-7%
3rd District	11,214	11,077	10,190	-9%	-8%
4th District	3,430	2,914	2,812	-18%	-4%

N/S: Numbers 10 or less are not compared statistically.

1. St. Mary's court closed in 2016. Records for filings from the venue are still maintained separately.

**Table 5.09. Misdemeanor Filings by Case Type
FY 24**

Court	Person	Property	Drugs	Weapon	Public		Reckless driving	Motor	Protective	Fish & Game	Other	Total
					order	DUI		vehicle — other	order violation			
Anchorage	1,110	753	92	82	433	897	4	75	5	4	2,444	5,899
Angeon	3	0	0	0	0	1	0	0	0	0	0	4
Aniak	22	0	0	0	0	2	0	0	0	1	5	30
Bethel	248	37	0	10	26	59	1	6	9	3	178	577
Cordova	10	2	1	0	3	9	0	11	2	3	1	42
Delta Junction	8	4	1	1	2	11	1	4	2	3	6	43
Dillingham	79	17	1	0	12	12	0	5	4	48	24	202
Emmonak	38	4	0	1	5	1	0	0	3	1	4	57
Fairbanks	294	469	43	17	58	397	7	155	58	7	319	1,824
Fort Yukon	10	2	0	1	1	1	0	0	0	2	5	22
Galena	4	3	1	0	0	0	0	0	0	0	2	10
Glennallen	14	6	0	0	3	17	1	1	0	6	14	62
Haines	4	2	1	0	0	4	0	2	1	0	5	19
Homer	50	72	10	1	15	100	4	71	7	5	26	361
Hoonah	4	0	1	0	1	7	0	0	0	0	5	18
Hooper Bay	38	3	0	0	2	6	0	0	1	0	2	52
Juneau	118	447	11	5	80	120	4	115	0	4	193	1,097
Kenai	156	141	30	8	28	281	6	238	23	12	68	991
Ketchikan	93	235	10	1	55	49	0	40	15	9	81	588
Kodiak	45	28	7	3	13	58	1	29	3	20	25	232
Kotzebue	107	47	0	0	41	20	1	6	3	0	57	282
Naknek	15	3	0	0	2	5	0	1	0	106	1	133
Nenana	8	12	3	0	2	18	3	9	2	4	9	70
Nome	166	97	1	2	48	28	0	7	3	2	78	432
Palmer	400	357	73	19	61	530	13	217	44	17	152	1,883
Petersburg	8	9	0	1	2	12	0	9	1	5	3	50
Prince of Wales	41	15	8	2	10	10	1	16	7	3	20	133
Sand Point	5	3	0	0	0	1	0	0	0	20	3	32
Seward	25	18	10	3	9	74	3	34	1	0	7	184
Sitka	17	15	2	1	14	36	0	13	7	15	10	130
Skagway	2	0	0	0	2	5	1	4	0	0	1	15
St. Mary's ¹	29	3	0	0	0	4	1	0	1	4	4	46
St. Paul	0	0	0	0	0	0	0	0	0	0	0	0
Tok	15	13	4	1	7	7	0	8	1	1	24	81
Unalakleet	35	6	0	0	4	8	0	1	3	0	22	79
Unalaska	10	14	0	0	6	9	0	9	1	1	6	56
Utqiagvik	43	30	1	1	16	17	1	7	8	0	52	176
Valdez	15	9	1	1	5	20	1	38	9	0	14	113
Wrangell	6	2	0	0	1	9	1	4	0	5	7	35
Yakutat	7	6	0	0	1	1	0	0	0	0	0	15
Total	3,302	2,884	312	161	968	2,846	55	1,135	224	311	3,877	16,075
% of total	20.5	18.0	2.0	1.0	6.0	17.7	0.3	7.1	1.4	1.9	24.1	100.0
1st District	303	731	33	10	166	254	7	203	31	41	325	2,104
2nd District	351	180	2	3	109	73	2	21	17	2	209	969
3rd District	1,934	1,423	225	117	590	2,013	33	729	99	242	2,785	10,190
4th District	714	550	52	31	103	506	13	182	77	26	558	2,812

1. St. Mary's court closed in 2016. Records for filings from the venue are still maintained separately.

**Table 5.10. Criminal Case Types
FY 24**

Person	Public Order
Homicide	Riot
Assault	Disorderly Conduct
Reckless Endangerment	Harassment
Kidnapping	Indecent Viewing or Photography
Custodial Interference	Possess or Distribute Child Pornography
Human Trafficking	Cruelty to Animals
Sex Offenses	Recruiting Gang Members
Robbery	Gambling
Extortion	Alcohol Licensing Laws
Coercion	
	Motor Vehicle DUI
Property	Motor Vehicle Reckless Driving
Theft	
Burglary	Motor Vehicle Other
Criminal Trespass	
Vehicle Theft	Protection Order Violation
Arson	
Criminal Mischief	Fish and Game
Business and Commercial Offenses	
	Other
Drugs	Offenses against Public Administration
Misconduct Involving a Controlled Substance	Offenses against Family and Vulnerable Adults
Manufacture, Delivery or Possession of Imitation Controlled Substance	All other offenses, including cases in which a charging document was never filed
Weapons	
Misconduct Involving Weapons	
Criminal Possession of Explosives	
Unlawful Furnishing of Explosives	

Criminal cases typically contain multiple charges. The Alaska Court System categorizes cases for reporting purposes based on the most serious charge. In FY07 the Alaska Court System changed the way it categorizes criminal cases for annual reporting. The categories now conform to the National Center for State Courts' national model for caseload statistical reporting. This change is intended to make Alaska statistics easier to compile, understand, and compare to those of other jurisdictions.

**Table 5.11. Misdemeanor Case Dispositions
FY 22 – FY 24**

Court	FY 22	FY 23	FY 24	Change	
				FY 22 to FY 24	FY 23 to FY 24
Anchorage	6,970	7,037	7,218	4%	3%
Angoon	6	8	3	N/S	N/S
Aniak	34	61	35	3%	-43%
Bethel	742	711	589	-21%	-17%
Cordova	50	26	42	-16%	62%
Delta Junction	38	28	46	21%	64%
Dillingham	267	226	201	-25%	-11%
Emmonak	62	100	55	-11%	-45%
Fairbanks	2,466	1,791	1,622	-34%	-9%
Fort Yukon	61	33	21	-66%	-36%
Galena	23	29	20	-13%	-31%
Glennallen	107	54	74	-31%	37%
Haines	18	32	19	6%	-41%
Homer	417	490	429	3%	-12%
Hoonah	13	12	20	54%	67%
Hooper Bay	69	85	47	-32%	-45%
Juneau	1,134	1,445	1,035	-9%	-28%
Kenai	1,168	1,230	1,146	-2%	-7%
Ketchikan	698	629	666	-5%	6%
Kodiak	187	248	285	52%	15%
Kotzebue	318	334	372	17%	11%
Naknek	193	135	153	-21%	13%
Nenana	78	52	42	-46%	-19%
Nome	529	466	489	-8%	5%
Palmer	2,430	2,295	2,185	-10%	-5%
Petersburg	85	48	52	-39%	8%
Prince of Wales	265	229	144	-46%	-37%
Sand Point	26	35	52	100%	49%
Seward	230	236	202	-12%	-14%
Sitka	182	156	138	-24%	-12%
Skagway	4	15	11	N/S	-27%
St. Mary's ¹	138	109	47	-66%	-57%
St. Paul	7	17	7	N/S	N/S
Tok	80	50	82	3%	64%
Unalakleet	77	113	140	82%	24%
Unalaska	64	99	92	44%	-7%
Utqiagvik	347	311	208	-40%	-33%
Valdez	104	57	71	-32%	25%
Wrangell	31	46	31	0%	-33%
Yakutat	5	15	15	N/S	0%
Total	19,723	19,093	18,106	-8%	-5%
1st District	2,441	2,635	2,134	-13%	-19%
2nd District	1,271	1,224	1,209	-5%	-1%
3rd District	12,220	12,185	12,157	-1%	0%
4th District	3,791	3,049	2,606	-31%	-15%

N/S: Numbers 10 or less are not compared statistically.

1. St. Mary's court closed in 2016. Records for filings from the venue are still maintained separately.

**Table 5.12. Misdemeanor Case Dispositions by Manner of Disposition
FY 24**

	Non-trial			Trial		Total
	Case dismissed	Guilty plea	Other	Guilty	Not guilty	
Anchorage	4,759	2,438	0	9	12	7,218
Angeon	1	2	0	0	0	3
Aniak	17	17	1	0	0	35
Bethel	416	173	0	0	0	589
Cordova	21	21	0	0	0	42
Delta Junction	26	20	0	0	0	46
Dillingham	90	110	0	0	1	201
Emmonak	37	18	0	0	0	55
Fairbanks	920	686	2	9	5	1,622
Fort Yukon	15	6	0	0	0	21
Galena	5	15	0	0	0	20
Glennallen	31	42	0	1	0	74
Haines	12	7	0	0	0	19
Homer	165	257	1	5	1	429
Hoonah	13	7	0	0	0	20
Hooper Bay	28	19	0	0	0	47
Juneau	460	568	1	4	2	1,035
Kenai	366	771	0	7	2	1,146
Ketchikan	374	276	6	7	3	666
Kodiak	66	212	0	7	0	285
Kotzebue	139	233	0	0	0	372
Naknek	31	120	0	1	1	153
Nenana	16	25	0	1	0	42
Nome	273	215	0	0	1	489
Palmer	1,183	975	0	21	6	2,185
Petersburg	18	33	0	1	0	52
Prince of Wales	77	67	0	0	0	144
Sand Point	23	28	0	1	0	52
Seward	60	139	0	2	1	202
Sitka	47	89	0	0	2	138
Skagway	6	5	0	0	0	11
St. Mary's ¹	26	21	0	0	0	47
St. Paul	5	2	0	0	0	7
Tok	42	37	3	0	0	82
Unalakleet	61	79	0	0	0	140
Unalaska	57	35	0	0	0	92
Utqiagvik	113	94	0	0	1	208
Valdez	21	50	0	0	0	71
Wrangell	17	13	0	1	0	31
Yakutat	12	3	0	0	0	15
Total	10,049	7,928	14	77	38	18,106
% of total	55.5	43.8	0.1	0.4	0.2	100.0
1st District	1,037	1,070	7	13	7	2,134
2nd District	586	621	0	0	2	1,209
3rd District	6,878	5,200	1	54	24	12,157
4th District	1,548	1,037	6	10	5	2,606

1. St. Mary's court closed in 2016. Records for filings from the venue are still maintained separately.

Table 5.13. Felony Filings in District Court¹
FY 22 – FY 24

Court	FY 22	FY 23	FY 24	Change	
				FY 22 to FY 24	FY 23 to FY 24
Anchorage	3,023	2,923	2,727	-10%	-7%
Angoon	3	1	3	N/S	N/S
Aniak	32	38	34	6%	-11%
Bethel	266	246	197	-26%	-20%
Cordova	10	18	19	N/S	6%
Delta Junction	5	5	8	N/S	N/S
Dillingham	80	65	74	-7%	14%
Emmonak	50	43	43	-14%	0%
Fairbanks	521	437	429	-18%	-2%
Fort Yukon	14	4	10	N/S	N/S
Galena	15	11	10	N/S	N/S
Glennallen	22	20	10	N/S	N/S
Haines	6	7	7	N/S	N/S
Homer	118	95	98	-17%	3%
Hoonah	2	5	5	N/S	N/S
Hooper Bay	34	43	28	-18%	-35%
Juneau	133	118	95	-29%	-19%
Kenai	340	301	334	-2%	11%
Ketchikan	109	132	124	14%	-6%
Kodiak	101	100	62	-39%	-38%
Kotzebue	134	136	129	-4%	-5%
Naknek	46	25	23	-50%	-8%
Nenana	21	20	18	-14%	-10%
Nome	112	91	108	-4%	19%
Palmer	593	610	506	-15%	-17%
Petersburg	17	6	8	N/S	N/S
Prince of Wales	29	35	18	-38%	-49%
Sand Point	9	11	11	N/S	0%
Seward	76	85	56	-26%	-34%
Sitka	35	46	42	20%	-9%
Skagway	0	3	1	N/S	N/S
St. Mary's ²	49	45	26	-47%	-42%
St. Paul	11	6	2	N/S	N/S
Tok	38	14	17	-55%	21%
Unalakleet	46	86	58	26%	-33%
Unalaska	11	14	11	0%	-21%
Utqiagvik	57	31	45	-21%	45%
Valdez	12	14	9	N/S	N/S
Wrangell	9	4	9	N/S	N/S
Yakutat	5	5	4	N/S	N/S
Total	6,194	5,899	5,418	-13%	-8%
1st District	348	362	316	-9%	-13%
2nd District	349	344	340	-3%	-1%
3rd District	4,452	4,287	3,942	-11%	-8%
4th District	1,045	906	820	-22%	-9%

N/S: Numbers 10 or less are not compared statistically.

1. This chart is for information purposes only. The totals are not included in the District Court totals. Felony cases are reported as Superior Court cases, regardless of where the case was initiated.
2. St. Mary's court closed in 2016. Records for filings from the venue are still maintained separately.

**Table 5.14. Post-judgment Filings:
Misdemeanor Petitions to Revoke Probation
FY 22 – FY 24**

Court	FY 22	FY 23	FY 24	Change	
				FY 22 to FY 24	FY 23 to FY 24
Anchorage	282	585	380	35%	-35%
Angoon	2	0	0	N/S	N/S
Aniak	1	1	0	N/S	N/S
Bethel	59	25	45	-24%	80%
Cordova	5	1	1	N/S	N/S
Delta Junction	1	0	3	N/S	N/S
Dillingham	11	7	5	N/S	N/S
Emmonak	9	2	8	N/S	N/S
Fairbanks	104	29	62	-40%	114%
Fort Yukon	1	2	2	N/S	N/S
Galena	0	0	0	N/S	N/S
Glennallen	3	2	2	N/S	N/S
Haines	0	0	0	N/S	N/S
Homer	33	29	44	33%	52%
Hoonah	0	0	3	N/S	N/S
Hooper Bay	1	5	3	N/S	N/S
Juneau	139	140	173	24%	24%
Kenai	99	91	81	-18%	-11%
Ketchikan	31	43	30	-3%	-30%
Kodiak	20	10	2	N/S	N/S
Kotzebue	37	52	69	86%	33%
Naknek	3	3	3	N/S	N/S
Nenana	1	1	3	N/S	N/S
Nome	44	116	156	255%	34%
Palmer	39	55	31	-21%	-44%
Petersburg	3	0	3	N/S	N/S
Prince of Wales	7	9	12	N/S	N/S
Sand Point	0	5	0	N/S	N/S
Seward	18	18	12	-33%	-33%
Sitka	8	16	11	N/S	-31%
Skagway	0	0	0	N/S	N/S
St. Mary's ¹	8	11	2	N/S	N/S
St. Paul	0	1	0	N/S	N/S
Tok	4	1	4	N/S	N/S
Unalakleet	1	2	9	N/S	N/S
Unalaska	0	6	1	N/S	N/S
Utqiagvik	11	7	9	N/S	N/S
Valdez	0	2	2	N/S	N/S
Wrangell	2	2	4	N/S	N/S
Yakutat	0	0	0	N/S	N/S
Total	987	1,279	1,175	19%	-8%
1st District	192	210	236	23%	12%
2nd District	93	177	243	161%	37%
3rd District	513	815	564	10%	-31%
4th District	189	77	132	-30%	71%

N/S: Numbers 10 or less are not compared statistically.

1. St. Mary's court closed in 2016. Records for filings from the venue are still maintained separately.

**Table 5.15. Small Claims Case Filings
FY 22 – FY 24**

Court	FY 22	FY 23	FY 24	Change	
				FY 22 to FY 24	FY 23 to FY 24
Anchorage	1,571	1,542	1,906	21%	24%
Angoon	0	0	0	N/S	N/S
Aniak	0	2	0	N/S	N/S
Bethel	13	24	31	138%	29%
Cordova	2	3	3	N/S	N/S
Delta Junction	8	11	9	N/S	N/S
Dillingham	9	9	15	N/S	N/S
Emmonak	2	1	2	N/S	N/S
Fairbanks	580	458	482	-17%	5%
Fort Yukon	4	1	5	N/S	N/S
Galena	2	0	1	N/S	N/S
Glennallen	6	4	8	N/S	N/S
Haines	5	10	7	N/S	N/S
Homer	45	46	67	49%	46%
Hoonah	0	1	1	N/S	N/S
Hooper Bay	2	0	0	N/S	N/S
Juneau	150	141	119	-21%	-16%
Kenai	197	166	182	-8%	10%
Ketchikan	160	134	161	1%	20%
Kodiak	30	37	47	57%	27%
Kotzebue	11	15	22	100%	47%
Naknek	0	1	1	N/S	N/S
Nenana	10	11	9	N/S	N/S
Nome	10	13	32	N/S	146%
Palmer	912	525	578	-37%	10%
Petersburg	14	8	10	N/S	N/S
Prince of Wales	5	8	4	N/S	N/S
Sand Point	0	0	0	N/S	N/S
Seward	11	11	14	27%	27%
Sitka	50	33	11	-78%	-67%
Skagway	3	3	0	N/S	N/S
St. Mary's ¹	0	0	1	N/S	N/S
St. Paul	0	0	0	N/S	N/S
Tok	12	10	6	N/S	N/S
Unalakleet	4	0	6	N/S	N/S
Unalaska	2	3	3	N/S	N/S
Utqiagvik	15	16	20	33%	25%
Valdez	34	5	7	N/S	N/S
Wrangell	9	6	5	N/S	N/S
Yakutat	8	0	2	N/S	N/S
Total	3,896	3,258	3,777	-3%	16%
1st District	404	344	320	-21%	-7%
2nd District	40	44	80	100%	82%
3rd District	2,819	2,352	2,831	0%	20%
4th District	633	518	546	-14%	5%

N/S: Numbers 10 or less are not compared statistically.

1. St. Mary's court closed in 2016. Records for filings from the venue are still maintained separately.

**Table 5.16. Small Claims Case Dispositions
FY 22 – FY 24**

Court	FY 22	FY 23	FY 24	Change	
				FY 22 to FY 24	FY 23 to FY 24
Anchorage	1,342	1,736	1,818	35%	5%
Anagoon	0	1	0	N/S	N/S
Aniak	1	3	0	N/S	N/S
Bethel	12	22	29	142%	32%
Cordova	3	3	0	N/S	N/S
Delta Junction	7	15	8	N/S	N/S
Dillingham	6	10	17	N/S	N/S
Emmonak	3	1	0	N/S	N/S
Fairbanks	480	682	452	-6%	-34%
Fort Yukon	3	0	3	N/S	N/S
Galena	2	1	1	N/S	N/S
Glennallen	8	5	6	N/S	N/S
Haines	3	12	7	N/S	N/S
Homer	40	35	63	58%	80%
Hoonah	0	1	1	N/S	N/S
Hooper Bay	0	2	0	N/S	N/S
Juneau	157	189	163	4%	-14%
Kenai	166	214	174	5%	-19%
Ketchikan	173	124	170	-2%	37%
Kodiak	21	45	43	105%	-4%
Kotzebue	9	18	15	N/S	-17%
Naknek	1	1	1	N/S	N/S
Nenana	8	13	10	N/S	N/S
Nome	11	9	28	155%	N/S
Palmer	488	723	939	92%	30%
Petersburg	11	10	9	N/S	N/S
Prince of Wales	4	4	8	N/S	N/S
Sand Point	0	0	0	N/S	N/S
Seward	12	11	11	-8%	0%
Sitka	52	43	10	N/S	N/S
Skagway	3	1	3	N/S	N/S
St. Mary's ¹	1	0	0	N/S	N/S
St. Paul	0	0	0	N/S	N/S
Tok	8	12	9	N/S	N/S
Unalakleet	0	3	3	N/S	N/S
Unalaska	3	1	5	N/S	N/S
Utqiagvik	10	18	6	N/S	N/S
Valdez	17	26	6	N/S	N/S
Wrangell	20	6	6	N/S	N/S
Yakutat	6	3	0	N/S	N/S
Total	3,091	4,003	4,024	30%	1%
1st District	429	394	377	-12%	-4%
2nd District	30	48	52	73%	8%
3rd District	2,107	2,810	3,083	46%	10%
4th District	525	751	512	-2%	-32%

N/S: Numbers 10 or less are not compared statistically.

1. St. Mary's court closed in 2016. Records for filings from the venue are still maintained separately.

**Table 5.17. Small Claims Case Dispositions by Manner of Disposition
FY 24**

Court	Stage of disposition					Total
	Dismiss	Default judgment	Judgment on the pleadings	Trial	Other	
Anchorage	791	865	61	62	39	1,818
Angeon	0	0	0	0	0	0
Aniak	0	0	0	0	0	0
Bethel	19	8	0	1	1	29
Cordova	0	0	0	0	0	0
Delta Junction	5	2	0	1	0	8
Dillingham	8	7	1	1	0	17
Emmonak	0	0	0	0	0	0
Fairbanks	198	206	32	11	5	452
Fort Yukon	2	1	0	0	0	3
Galena	1	0	0	0	0	1
Glennallen	4	2	0	0	0	6
Haines	3	3	0	1	0	7
Homer	30	22	9	2	0	63
Hoonah	1	0	0	0	0	1
Hooper Bay	0	0	0	0	0	0
Juneau	68	84	4	5	2	163
Kenai	84	70	9	11	0	174
Ketchikan	83	72	8	6	1	170
Kodiak	16	21	0	6	0	43
Kotzebue	4	8	0	2	1	15
Naknek	0	1	0	0	0	1
Nenana	5	4	0	1	0	10
Nome	11	16	1	0	0	28
Palmer	330	515	22	58	14	939
Petersburg	4	4	1	0	0	9
Prince of Wales	5	3	0	0	0	8
Sand Point	0	0	0	0	0	0
Seward	3	5	2	1	0	11
Sitka	5	5	0	0	0	10
Skagway	2	1	0	0	0	3
St. Mary's ¹	0	0	0	0	0	0
St. Paul	0	0	0	0	0	0
Tok	5	2	0	2	0	9
Unalakleet	0	3	0	0	0	3
Unalaska	1	2	2	0	0	5
Utqiagvik	3	3	0	0	0	6
Valdez	3	3	0	0	0	6
Wrangell	3	1	0	2	0	6
Yakutat	0	0	0	0	0	0
Total	1,697	1,939	152	173	63	4,024
% of total	42.2	48.2	3.8	4.3	1.5	100.0
1st District	174	173	13	14	3	377
2nd District	18	30	1	2	1	52
3rd District	1,270	1,513	106	141	53	3,083
4th District	235	223	32	16	6	512

1. St. Mary's court closed in 2016. Records for filings from the venue are still maintained separately.

**Table 5.18. Civil Protective Order¹ Case Filings
FY 22 – FY 24**

Court	FY 22	FY 23	FY 24	Change	
				FY 22 to FY 24	FY 23 to FY 24
Anchorage	3,148	3,304	3,326	6%	1%
Angeon	3	4	5	N/S	N/S
Aniak	16	23	20	25%	-13%
Bethel	291	311	313	8%	1%
Cordova	12	14	7	N/S	N/S
Delta Junction	34	41	36	6%	-12%
Dillingham	108	82	75	-31%	-9%
Emmonak	34	27	34	0%	26%
Fairbanks	666	753	820	23%	9%
Fort Yukon	5	3	10	N/S	N/S
Galena	17	12	7	N/S	N/S
Glennallen	24	19	25	4%	32%
Haines	10	23	24	N/S	4%
Homer	128	144	157	23%	9%
Hoonah	7	15	13	N/S	-13%
Hooper Bay	39	21	15	-62%	-29%
Juneau	329	316	246	-25%	-22%
Kenai	368	349	444	21%	27%
Ketchikan	210	221	161	-23%	-27%
Kodiak	87	63	71	-18%	13%
Kotzebue	101	107	116	15%	8%
Naknek	15	21	15	0%	-29%
Nenana	17	19	23	35%	21%
Nome	143	159	163	14%	3%
Palmer	963	1,189	1,235	28%	4%
Petersburg	35	15	28	-20%	87%
Prince of Wales	68	93	54	-21%	-42%
Sand Point	11	1	4	N/S	N/S
Seward	38	25	29	-24%	16%
Sitka	55	75	86	56%	15%
Skagway	7	2	1	N/S	N/S
St. Mary's ²	23	10	27	17%	N/S
St. Paul	5	0	0	N/S	N/S
Tok	23	27	30	30%	11%
Unalakleet	13	4	7	N/S	N/S
Unalaska	15	7	4	N/S	N/S
Utqiagvik	218	201	178	-18%	-11%
Valdez	22	31	61	177%	97%
Wrangell	22	28	16	-27%	-43%
Yakutat	3	6	3	N/S	N/S
Total	7,333	7,765	7,889	8%	2%
1st District	749	798	637	-15%	-20%
2nd District	475	471	464	-2%	-1%
3rd District	4,944	5,249	5,453	10%	4%
4th District	1,165	1,247	1,335	15%	7%

N/S: Numbers 10 or less are not compared statistically.

1. The Civil Protective Order case group includes petitions for domestic violence, stalking, and sexual assault protective orders.
2. St. Mary's court closed in 2016. Records for filings from the venue are still maintained separately.

**Table 5.19. Civil Protective Order¹ Case Dispositions
FY 22 – FY 24**

Court	FY 22	FY 23	FY 24	Change	
				FY 22 to FY 24	FY 23 to FY 24
Anchorage	3,069	3,316	3,263	6%	-2%
Anagoon	3	5	5	N/S	N/S
Aniak	18	18	17	-6%	-6%
Bethel	270	306	314	16%	3%
Cordova	12	13	7	N/S	N/S
Delta Junction	40	41	36	-10%	-12%
Dillingham	114	72	71	-38%	-1%
Emmonak	32	24	23	-28%	-4%
Fairbanks	639	741	760	19%	3%
Fort Yukon	6	3	9	N/S	N/S
Galena	16	13	7	N/S	N/S
Glennallen	20	16	26	30%	63%
Haines	10	20	22	N/S	10%
Homer	119	140	154	29%	10%
Hoonah	10	15	13	N/S	-13%
Hooper Bay	37	20	8	N/S	N/S
Juneau	335	276	250	-25%	-9%
Kenai	361	345	439	22%	27%
Ketchikan	194	225	159	-18%	-29%
Kodiak	81	67	71	-12%	6%
Kotzebue	103	108	121	17%	12%
Naknek	16	21	14	-12%	-33%
Nenana	18	18	19	6%	6%
Nome	143	147	161	13%	10%
Palmer	927	1,156	1,230	33%	6%
Petersburg	37	14	28	-24%	100%
Prince of Wales	84	90	54	-36%	-40%
Sand Point	12	1	4	N/S	N/S
Seward	39	23	29	-26%	26%
Sitka	47	67	83	77%	24%
Skagway	8	2	1	N/S	N/S
St. Mary's ²	22	11	22	0%	100%
St. Paul	3	2	0	N/S	N/S
Tok	23	25	29	26%	16%
Unalakleet	10	5	5	N/S	N/S
Unalaska	11	8	5	N/S	N/S
Utqiagvik	224	184	204	-9%	11%
Valdez	20	27	50	150%	85%
Wrangell	20	30	15	-25%	-50%
Yakutat	3	6	3	N/S	N/S
Total	7,156	7,621	7,731	8%	1%
1st District	751	750	633	-16%	-16%
2nd District	480	444	491	2%	11%
3rd District	4,804	5,207	5,363	12%	3%
4th District	1,121	1,220	1,244	11%	2%

N/S: Numbers 10 or less are not compared statistically.

- The Civil Protective Order case group includes petitions for domestic violence, stalking, and sexual assault protective orders.
- St. Mary's court closed in 2016. Records for filings from the venue are still maintained separately.

**Table 5.20. District Court General Civil Case Filings
FY 22 – FY 24**

Court	FY 22	FY 23	FY 24	Change	
				FY 22 to FY 24	FY 23 to FY 24
Anchorage	3,010	3,240	3,645	21%	13%
Angoon	2	1	0	N/S	N/S
Aniak	3	0	2	N/S	N/S
Bethel	41	52	37	-10%	-29%
Cordova	9	6	8	N/S	N/S
Delta Junction	20	3	8	N/S	N/S
Dillingham	14	13	11	-21%	-15%
Emmonak	1	0	1	N/S	N/S
Fairbanks	678	594	762	12%	28%
Fort Yukon	0	2	0	N/S	N/S
Galena	0	2	2	N/S	N/S
Glennallen	7	8	7	N/S	N/S
Haines	7	9	8	N/S	N/S
Homer	60	54	62	3%	15%
Hoonah	2	1	3	N/S	N/S
Hooper Bay	0	0	0	N/S	N/S
Juneau	240	196	232	-3%	18%
Kenai	274	205	245	-11%	20%
Ketchikan	111	107	115	4%	7%
Kodiak	51	32	62	22%	94%
Kotzebue	23	14	18	-22%	29%
Naknek	13	6	8	N/S	N/S
Nenana	11	4	12	9%	N/S
Nome	10	15	32	N/S	113%
Palmer	616	614	834	35%	36%
Petersburg	15	6	12	-20%	N/S
Prince of Wales	14	18	17	21%	-6%
Sand Point	2	1	0	N/S	N/S
Seward	32	20	25	-22%	25%
Sitka	47	33	45	-4%	36%
Skagway	3	1	4	N/S	N/S
St. Mary's ¹	0	0	0	N/S	N/S
St. Paul	0	0	0	N/S	N/S
Tok	3	10	5	N/S	N/S
Unalakleet	0	0	0	N/S	N/S
Unalaska	8	7	17	N/S	N/S
Utqiagvik	14	11	33	136%	200%
Valdez	16	18	22	38%	22%
Wrangell	7	10	9	N/S	N/S
Yakutat	2	2	2	N/S	N/S
Total	5,366	5,315	6,305	17%	19%
1st District	450	384	447	-1%	16%
2nd District	47	40	83	77%	108%
3rd District	4,112	4,224	4,946	20%	17%
4th District	757	667	829	10%	24%

N/S: Numbers 10 or less are not compared statistically.

1. St. Mary's court closed in 2016. Records for filings from the venue are still maintained separately.

**Table 5.21. District Court General Civil Filings by Case Type
FY 24**

Court	Eviction/ real property	Debt/ contract	Post- conviction relief	Other	Total
Anchorage	1,707	1,664	2	272	3,645
Angoon	0	0	0	0	0
Aniak	1	1	0	0	2
Bethel	6	28	0	3	37
Cordova	1	7	0	0	8
Delta Junction	1	7	0	0	8
Dillingham	1	7	0	3	11
Emmonak	0	1	0	0	1
Fairbanks	252	376	1	133	762
Fort Yukon	0	0	0	0	0
Galena	0	2	0	0	2
Glennallen	1	6	0	0	7
Haines	1	7	0	0	8
Homer	19	36	0	7	62
Hoonah	2	1	0	0	3
Hooper Bay	0	0	0	0	0
Juneau	82	128	0	22	232
Kenai	48	164	0	33	245
Ketchikan	55	51	0	9	115
Kodiak	18	40	1	3	62
Kotzebue	5	12	0	1	18
Naknek	1	6	0	1	8
Nenana	3	6	0	3	12
Nome	12	19	0	1	32
Palmer	137	616	0	81	834
Petersburg	7	4	0	1	12
Prince of Wales	7	9	0	1	17
Sand Point	0	0	0	0	0
Seward	11	11	0	3	25
Sitka	9	34	0	2	45
Skagway	0	4	0	0	4
St. Mary's ¹	0	0	0	0	0
St. Paul	0	0	0	0	0
Tok	0	5	0	0	5
Unalakleet	0	0	0	0	0
Unalaska	6	11	0	0	17
Utqiagvik	6	25	0	2	33
Valdez	5	14	0	3	22
Wrangell	5	3	0	1	9
Yakutat	1	1	0	0	2
Total	2,410	3,306	4	585	6,305
% of total	38.2	52.4	0.1	9.3	100.0
1st District	169	242	0	36	447
2nd District	23	56	0	4	83
3rd District	1,955	2,582	3	406	4,946
4th District	263	426	1	139	829

1. St. Mary's court closed in 2016. Records for filings from the venue are still maintained separately.

**Table 5.22. District Court General Civil Case Dispositions
FY 22 – FY 24**

Court	FY 22	FY 23	FY 24	Change	
				FY 22 to FY 24	FY 23 to FY 24
Anchorage	2,791	3,166	3,170	14%	0%
Angoon	0	4	0	N/S	N/S
Aniak	2	2	0	N/S	N/S
Bethel	43	45	34	-21%	-24%
Cordova	13	12	4	N/S	N/S
Delta Junction	17	12	5	N/S	N/S
Dillingham	19	12	10	N/S	N/S
Emmonak	2	0	0	N/S	N/S
Fairbanks	693	693	519	-25%	-25%
Fort Yukon	1	0	1	N/S	N/S
Galena	3	1	2	N/S	N/S
Glennallen	12	6	8	N/S	N/S
Haines	9	7	9	N/S	N/S
Homer	65	52	53	-18%	2%
Hoonah	2	1	1	N/S	N/S
Hooper Bay	0	0	0	N/S	N/S
Juneau	269	212	188	-30%	-11%
Kenai	268	198	213	-21%	8%
Ketchikan	126	115	110	-13%	-4%
Kodiak	74	44	45	-39%	2%
Kotzebue	32	11	14	-56%	27%
Naknek	6	9	7	N/S	N/S
Nenana	13	11	6	N/S	N/S
Nome	15	7	21	40%	N/S
Palmer	854	536	563	-34%	5%
Petersburg	19	4	12	-37%	N/S
Prince of Wales	19	17	21	11%	24%
Sand Point	4	0	1	N/S	N/S
Seward	29	23	27	-7%	17%
Sitka	35	38	43	23%	13%
Skagway	3	4	1	N/S	N/S
St. Mary's ¹	0	0	0	N/S	N/S
St. Paul	0	0	0	N/S	N/S
Tok	3	7	5	N/S	N/S
Unalakleet	0	1	0	N/S	N/S
Unalaska	12	8	6	N/S	N/S
Utqiagvik	22	11	13	-41%	18%
Valdez	16	19	16	0%	-16%
Wrangell	10	8	13	N/S	N/S
Yakutat	3	0	3	N/S	N/S
Total	5,504	5,296	5,144	-7%	-3%
1st District	495	410	401	-19%	-2%
2nd District	69	30	48	-30%	60%
3rd District	4,163	4,085	4,123	-1%	1%
4th District	777	771	572	-26%	-26%

N/S: Numbers 10 or less are not compared statistically.

1. St. Mary's court closed in 2016. Records for filings from the venue are still maintained separately.

**Table 5.23. District Court General Civil Case Dispositions
by Manner of Disposition
FY 24**

Court	Stage of disposition						Total
	Dismiss/ settle	Default judgment	Summary judgment	Court trial	Jury trial	Other	
Anchorage	2,260	606	227	8	4	65	3,170
Angoon	0	0	0	0	0	0	0
Aniak	0	0	0	0	0	0	0
Bethel	24	4	5	0	1	0	34
Cordova	2	1	1	0	0	0	4
Delta Junction	4	1	0	0	0	0	5
Dillingham	4	2	2	0	1	1	10
Emmonak	0	0	0	0	0	0	0
Fairbanks	363	93	36	4	1	22	519
Fort Yukon	1	0	0	0	0	0	1
Galena	1	1	0	0	0	0	2
Glennallen	5	2	1	0	0	0	8
Haines	7	1	1	0	0	0	9
Homer	39	4	9	1	0	0	53
Hoonah	1	0	0	0	0	0	1
Hooper Bay	0	0	0	0	0	0	0
Juneau	125	39	18	0	2	4	188
Kenai	125	46	31	0	0	11	213
Ketchikan	51	13	38	1	1	6	110
Kodiak	26	3	10	4	0	2	45
Kotzebue	8	2	2	2	0	0	14
Naknek	3	2	1	0	1	0	7
Nenana	4	0	1	0	0	1	6
Nome	11	6	4	0	0	0	21
Palmer	268	161	83	4	3	44	563
Petersburg	8	2	2	0	0	0	12
Prince of Wales	10	3	8	0	0	0	21
Sand Point	0	1	0	0	0	0	1
Seward	15	6	6	0	0	0	27
Sitka	25	10	5	1	2	0	43
Skagway	0	1	0	0	0	0	1
St. Mary's ¹	0	0	0	0	0	0	0
St. Paul	0	0	0	0	0	0	0
Tok	5	0	0	0	0	0	5
Unalakleet	0	0	0	0	0	0	0
Unalaska	4	1	1	0	0	0	6
Utqiagvik	8	5	0	0	0	0	13
Valdez	4	1	10	0	0	1	16
Wrangell	8	3	0	1	1	0	13
Yakutat	2	1	0	0	0	0	3
Total	3,421	1,021	502	26	17	157	5,144
% of total	66.5	19.8	9.8	0.5	0.3	3.1	100.0
1st District	237	73	72	3	6	10	401
2nd District	27	13	6	2	0	0	48
3rd District	2,755	836	382	17	9	124	4,123
4th District	402	99	42	4	2	23	572

1. St. Mary's court closed in 2016. Records for filings from the venue are still maintained separately.

**Table 5.24. Minor Offense Case Dispositions
FY 22 – FY 24**

Court	FY 22	FY 23	FY 24	Change	
				FY 22 to FY 24	FY 23 to FY 24
Anchorage ¹	21,550	15,189	15,079	-30%	-1%
Angoon	0	2	0	N/S	N/S
Aniak	16	18	18	13%	0%
Bethel	91	75	176	93%	135%
Cordova	80	60	57	-29%	-5%
Delta Junction	645	469	434	-33%	-7%
Dillingham	90	107	134	49%	25%
Emmonak	8	2	2	N/S	N/S
Fairbanks	4,474	4,602	4,869	9%	6%
Fort Yukon	5	9	1	N/S	N/S
Galena	4	1	0	N/S	N/S
Glennallen	455	380	206	-55%	-46%
Haines	60	80	69	15%	-14%
Homer	884	1,247	1,306	48%	5%
Hoonah	16	24	8	N/S	N/S
Hooper Bay	1	2	0	N/S	N/S
Juneau	1,926	1,114	943	-51%	-15%
Kenai	5,153	2,904	2,659	-48%	-8%
Ketchikan	344	404	332	-3%	-18%
Kodiak	586	407	815	39%	100%
Kotzebue	61	28	88	44%	214%
Naknek	99	98	67	-32%	-32%
Nenana	2,311	1,735	1,678	-27%	-3%
Nome	163	108	283	74%	162%
Palmer	7,067	3,979	5,358	-24%	35%
Petersburg	106	116	97	-8%	-16%
Prince of Wales	404	388	224	-45%	-42%
Sand Point	6	18	9	N/S	N/S
Seward	1,454	1,539	1,289	-11%	-16%
Sitka	270	285	215	-20%	-25%
Skagway	6	11	11	N/S	0%
St. Mary's ²	4	4	0	N/S	N/S
St. Paul	2	1	0	N/S	N/S
Tok	179	240	654	265%	173%
Unalakleet	18	28	21	17%	-25%
Unalaska	129	213	205	59%	-4%
Utqiagvik	60	170	71	18%	-58%
Valdez	63	90	140	122%	56%
Wrangell	61	56	82	34%	46%
Yakutat	18	4	8	N/S	N/S
Total	48,869	36,207	37,608	-23%	4%
1st District	3,211	2,484	1,989	-38%	-20%
2nd District	302	334	463	53%	39%
3rd District	37,618	26,232	27,324	-27%	4%
4th District	7,738	7,157	7,832	1%	9%

N/S: Numbers 10 or less are not compared statistically.

1. The FY22 numbers also include numbers for minor citations previously unreported from the period April 30, 2021 through June 30, 2021.

2. St. Mary's court closed in 2016. Records for filings from the venue are still maintained separately.

**Table 5.25. Minor Offense Case Dispositions by Case Type
FY 24**

Court	Equipment	Speeding	Improper driver behavior	Maneuvers	Alcohol/ drugs	Fish & Game	Other	Total
Anchorage	1,604	3,824	6,601	2,181	234	35	600	15,079
Angeon	0	0	0	0	0	0	0	0
Aniak	0	0	0	1	0	17	0	18
Bethel	43	0	37	35	0	32	29	176
Cordova	2	5	17	8	1	16	8	57
Delta Junction	60	253	80	18	1	18	4	434
Dillingham	2	2	43	18	0	27	42	134
Emmonak	0	0	1	0	0	1	0	2
Fairbanks	565	1,340	2,012	539	32	63	318	4,869
Fort Yukon	0	0	0	0	0	1	0	1
Galena	0	0	0	0	0	0	0	0
Glennallen	8	124	30	10	3	24	7	206
Haines	8	9	22	10	2	10	8	69
Homer	121	544	405	70	5	88	73	1,306
Hoonah	0	0	4	1	0	3	0	8
Hooper Bay	0	0	0	0	0	0	0	0
Juneau	29	141	447	64	1	37	224	943
Kenai	235	942	667	145	6	499	165	2,659
Ketchikan	3	20	122	21	0	52	114	332
Kodiak	75	50	393	46	3	89	159	815
Kotzebue	1	0	6	10	2	22	47	88
Naknek	3	7	15	1	4	30	7	67
Nenana	115	1,273	190	73	2	14	11	1,678
Nome	4	7	69	38	3	1	161	283
Palmer	330	1,330	1,726	335	25	74	1,538	5,358
Petersburg	3	5	23	3	0	49	14	97
Prince of Wales	10	55	64	8	0	62	25	224
Sand Point	0	0	3	0	0	3	3	9
Seward	333	403	385	73	10	56	29	1,289
Sitka	4	12	67	6	3	97	26	215
Skagway	2	1	3	1	0	2	2	11
St. Mary's ¹	0	0	0	0	0	0	0	0
St. Paul	0	0	0	0	0	0	0	0
Tok	67	437	99	18	1	4	28	654
Unalakleet	4	0	1	0	0	6	10	21
Unalaska	78	24	28	5	0	50	20	205
Utqiagvik	0	28	7	5	0	14	17	71
Valdez	6	30	29	10	1	7	57	140
Wrangell	13	12	24	2	0	26	5	82
Yakutat	0	0	1	0	0	4	3	8
Total	3,728	10,878	13,621	3,755	339	1,533	3,754	37,608
% of total	9.9	28.9	36.2	10.0	0.9	4.1	10.0	100.0
1st District	72	255	777	116	6	342	421	1,989
2nd District	9	35	83	53	5	43	235	463
3rd District	2,797	7,285	10,342	2,902	292	998	2,708	27,324
4th District	850	3,303	2,419	684	36	150	390	7,832

1. St. Mary's court closed in 2016. Records for filings from the venue are still maintained separately.

**Table 5.26. Minor Offense Case Types
FY 24**

Equipment Equipment / Vehicles - Registrations, Defects and Misuse	Alcohol and Drug Controlled Substance Violations
Speeding	Fish and Game
Improper Driver Behavior Duties Failed — Requirements Not Met	Other Offenses Tickets with zero points added to record Littering Duty Failure Curfew Dog Tickets Tobacco Boat Safety
Maneuvers — Illegal or Improper Failure to Obey Following Improperly Improper Lane or Location Passing Reckless, Careless or Negligent Driving Failure to Yield Failure to Signal Improper Turns Wrong Way or Side Miscellaneous Maneuvers	

In FY07 the Alaska Court System changed the way it categorizes minor offenses for annual reporting. The traffic categories now conform to the American Association of Motor Vehicle Administrators (AAMVA) Code Dictionary. This change is intended to make Alaska statistics easier to compile, understand, and compare to those of other jurisdictions.



Rainbow over Sentinel Lighthouse, Lynn Canal (First Judicial District)

Cover photograph: Sea stacks in Spire Cove, Kenai Fjords National Park (Third Judicial District), 24 Jul 2024. Photo by Alex Ennes, National Park Service (alasknaps on Flickr; public domain).

Photos used with permission

The following photos are used without charge, including photos chosen from Creative Commons-licensed photos at Flickr (www.flickr.com). Creative Commons licensing information can be found at <http://creativecommons.org/licenses/>

Photo by Rick Berg (rickberg on Flickr): page 18, Alaska Range, Denali National Park and Preserve, 26 Aug 2024. (Used in accordance with Creative Commons Attribution-NonCommercial 2.0 Generic (CC BY-NC 2.0) license.)

Photo by Phillip Clapham, National Oceanic and Atmospheric Administration (noaaphotolib on Flickr): page 24, Seabirds, humpback whale, and the NOAA Ship Oscar Dyson off Unalaska Island, 24 Sep 2010. (Public domain.)

Photo by Thomas Doyle (my-aleutian-world on Flickr): page 58, Unalaska Island, 28 Feb 2011. (Used in accordance with Creative Commons Attribution-NonCommercial-NoDerivs 2.0 Generic (CC BY-NC-ND 2.0) license.)

Photo by Doug Greenberg (dagberg on Flickr): page v, Red-necked phalarope, Nome, 3 Jun 2023. (Used in accordance with Creative Commons Attribution-NonCommercial 2.0 Generic (CC BY-NC 2.0) license.)

Photo by DevDharm Khalsa, National Park Service (alasknaps on Flickr): page 26, Aurora borealis over Slaven's Roadhouse, Coal Creek Camp, Yukon-Charley Rivers National Preserve, 5 Feb 2016. (Public domain.)

Photo by Arthur T. LaBar (arthurlabar on Flickr): page 6, Brown bear sow and cubs, Katmai National Park, 9 Jul 2021. (Used in accordance with Creative Commons Attribution-NonCommercial 2.0 Generic (CC BY-NC 2.0) license.)

Photos by Neil Nesheim: page 5, Bald eagle feather in the rain, Juneau, 13 Jul 2021 ; page 16, Hiking trail, Glacier Bay National Park and Preserve, 9 Jul 2021 ; page 57, Sea lions and skiff, Fritz Cove, 23 Feb 2022 ; page 88, Rainbow over Sentinel Lighthouse, Lynn Canal, 23 Sep 2023. (Used by permission.)

Photo by Tyra Olstad, Bureau of Land Management (blmalaska on Flickr): page vi, Sukakpak Mountain in July, Brooks Range, 28 Jul 2023. (Public domain.)

Photo by Andrea Pokrzywinski (andreagp on Flickr): page 25, Winter bicyclist and muskoxen, Bethel, 30 Jan 2014. (Used in accordance with Creative Commons Attribution 2.0 Generic (CC BY 2.0) license.)

Photo by Anita Ritenour (puliarfanita on Flickr): page 1, Sukakpak Mountain in September, Brooks Range, 30 Sep 2014. (Used in accordance with Creative Commons Attribution-NonCommercial 2.0 Generic (CC BY-NC 2.0) license.)

Photo by Travis S. (baggis on Flickr): page 17, Fish eggs, Agiak Lake, Gates of the Arctic, 11 Aug 2009. (Used in accordance with Creative Commons Attribution-NonCommercial 2.0 Generic (CC BY-NC 2.0) license.)

Photo by U.S. Fish and Wildlife Service (usfws_alaska on Flickr): page 89, Muskrat, Yukon Delta National Wildlife Refuge, 13 May 2013. (Public domain.)

Photo by Bob Wick, Bureau of Land Management (blmalaska on Flickr): page 4, Oxbow lake on the Iditarod National Historic Trail between Kaltag and Unalakleet, 13 Mar 2016. (Used in accordance with Creative Commons Attribution 2.0 Generic (CC BY 2.0) license.)

Photo by Alex Zanucoli (alexzanucoli on Flickr): page ii, Northwestern Fjord and Glacier, Kenai Fjords National Park, 21 Aug 2018. (Used in accordance with Creative Commons Attribution-ShareAlike 2.0 Generic (CC BY-SA 2.0) license.)



Muskrat, Yukon Delta National Wildlife Refuge (Fourth Judicial District)



Office of the Administrative Director
Alaska Court System
303 K Street
Anchorage, Alaska 99501
(907) 264-0548