



ENHANCE ★ PROTECT ★ CONSERVE

# Mississippi Advisory Commission on Marine Resources

February 16, 2021



ENHANCE ★ PROTECT ★ CONSERVE

# Employment, Contracts and Procurement Updates February 16, 2021

# Employment Updates

- Coralie Rose – Dry Lab Director - Shellfish Bureau – 01.16.21
- Ralph Terry – Seafood Officer - Seafood Technology Bureau – 02.01.21
- Greg Christodoulou – Deputy Director - Wetlands Permitting and Mitigation Compliance – 02.01.21

# Contracts for February 2021

<b>Service Contracts</b>					
<u>Office Requesting</u>	<u>Procurement Method</u>	<u>Amount</u>	<u>Description</u>	<u>Board Approval</u>	<u>Funding Source</u>
Shellfish	Request for Qualification	\$600,000.00	Remote Oyster Setting Facility Feasibility Study	PPRB/BOB	100% RESTORE



ENHANCE ★ PROTECT ★ CONSERVE

# Actions Update February 15, 2021



## Discussed at the January 2021 meeting:

- Jackson County Board of Supervisors' request for 10 year permit and required variance to the MS Coastal Program (Ch. VIII, Sect. 8, Part 114.01) for beach renourishment for the Front and East Beach in Ocean Springs and Pascagoula Beach.
  - Commission recommended approval of the request.
  - Director approved the request.



ENHANCE ★ PROTECT ★ CONSERVE

# Mississippi Department of Marine Resources

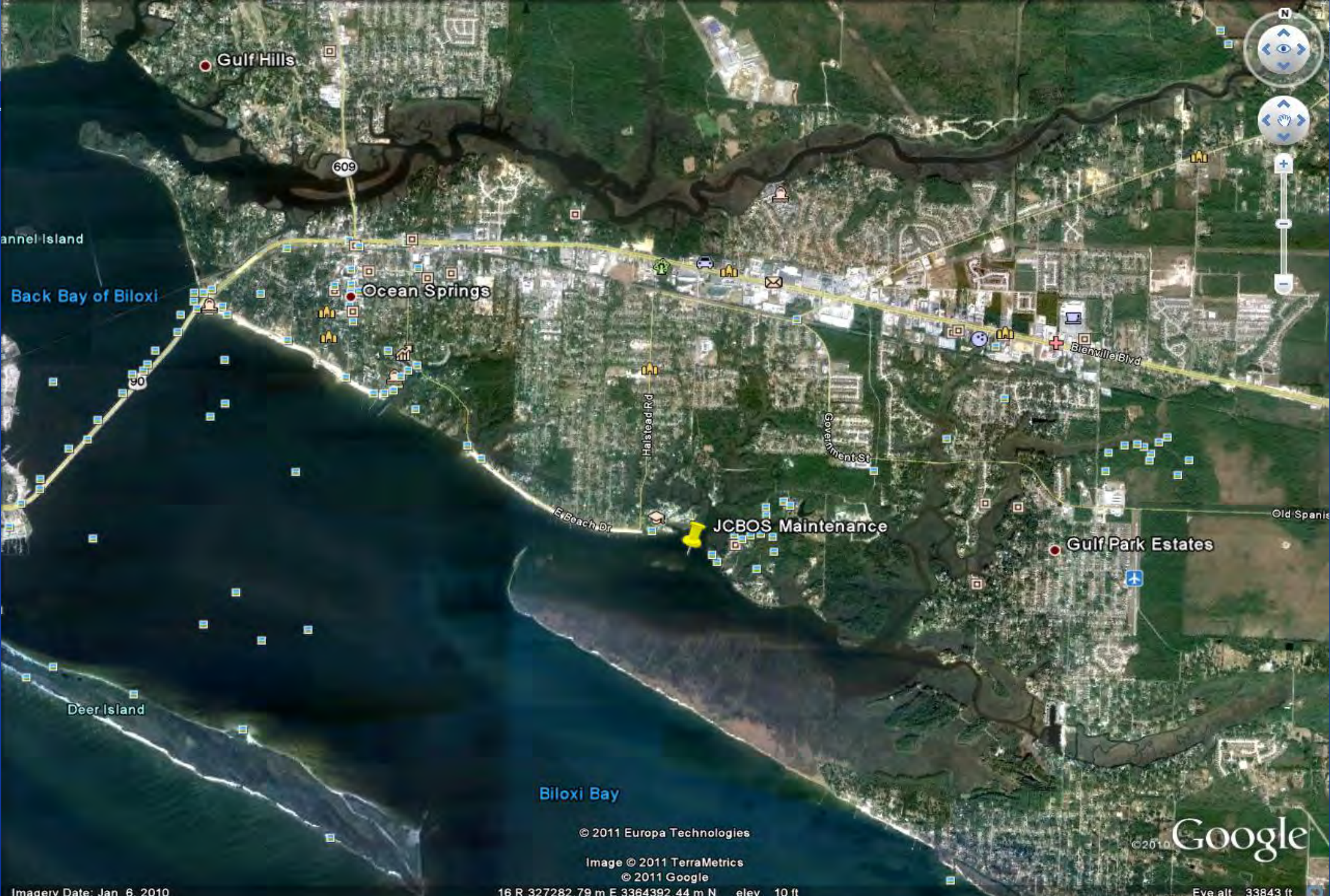
Coastal Resources Management

February 2021

**Request for Permit Extension by:  
Jackson County Board of Supervisors  
File: DMR21-000060**

- **Location: Davis and Stark Bayous in Ocean Springs, Jackson County, MS**
- **Use District: (G) General Use District**
- **Agent: Seymour Engineering**





Gulf Hills

609

Channel Island

Back Bay of Biloxi

Ocean Springs

Brenville Blvd

Haistead Rd

Government St

Beach Dr

JC BOS Maintenance

Gulf Park Estates

Old Spanish

Deer Island

Biloxi Bay

© 2011 Europa Technologies

Image © 2011 TerraMetrics

© 2011 Google

© 2011 Google

Imagery Date: Jan 6, 2010

16 R 327282.79 m E 3384392.44 m N elev 10 ft

Eye alt 33843 ft





Halstead Rd

E Beach Dr

JCBOS Maintenance



© 2011 Google

©2010 Google

## Project Description

- **Maintenance Dredging:**
  - **3,950' x 40' - 50' x 3' below MLW**
  - **20,620 cubic yards**
- **Requesting a 2-year Extension**

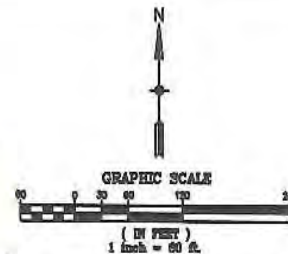


**GENERAL NOTES:**

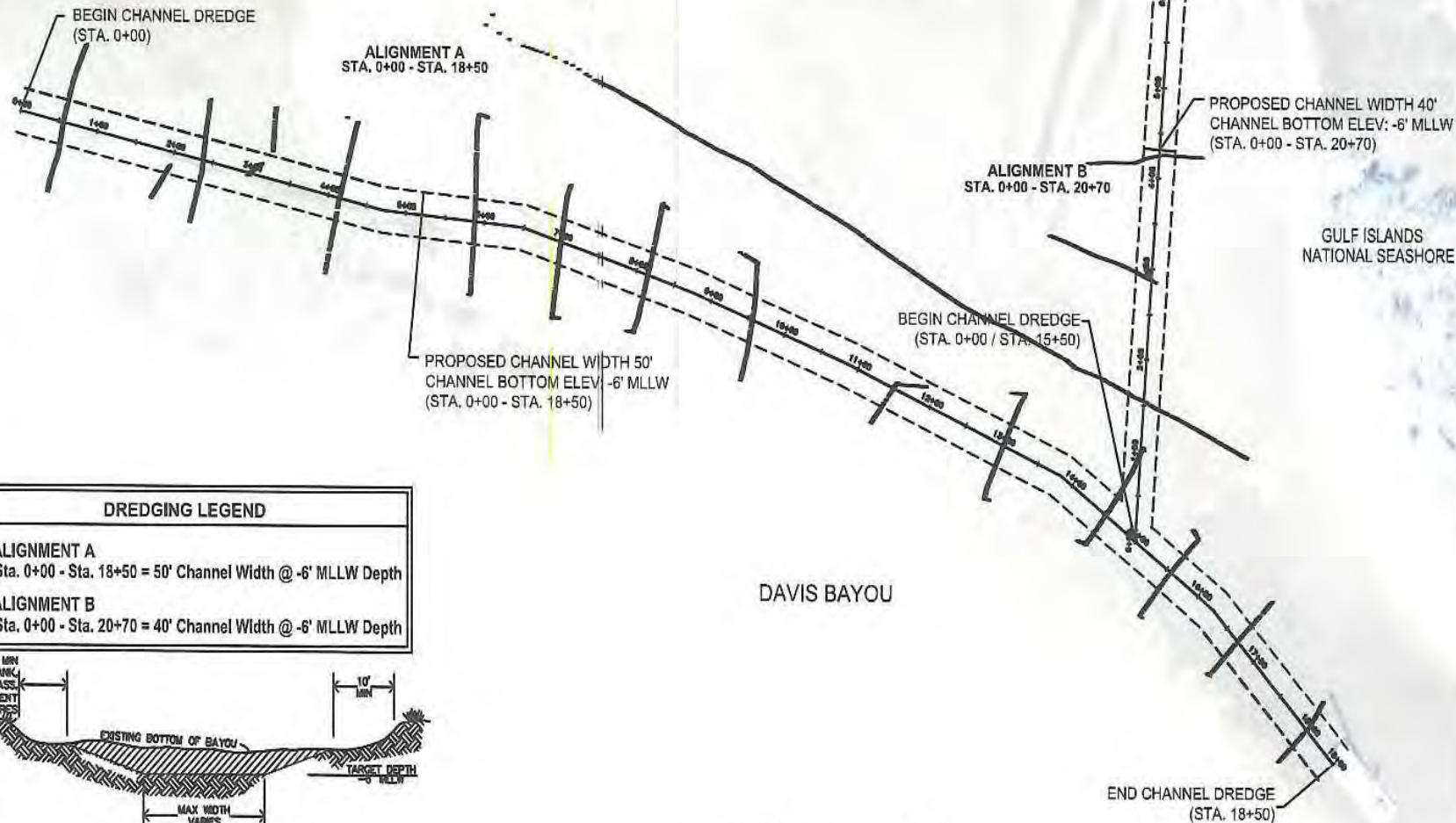
1. ALL SURVEY ELEVATIONS SHOWN REFLECT MEAN LOWER LOW WATER (MLLW).
2. AERIAL IMAGERY PROVIDED BY JACKSON COUNTY AND HAS NOT BEEN GEOREFERENCED IN RELATION TO HYDROGRAPHICAL SURVEY DATA SHOWN, DATE OF IMAGERY IS UNKNOWN.
3. ALL SURVEY ELEVATIONS REPRESENT CONDITIONS OF THE DREDGING AREAS AND ANY DISCREPANCIES SHOULD BE IDENTIFIED AND FIELD VERIFIED BY THE CONTRACTOR AND BROUGHT TO THE ATTENTION OF THE ENGINEER PRIOR TO COMMENCEMENT OF ANY WORK.

THE UNIVERSITY OF SO. MISS.  
GULF COAST RESEARCH LAB.

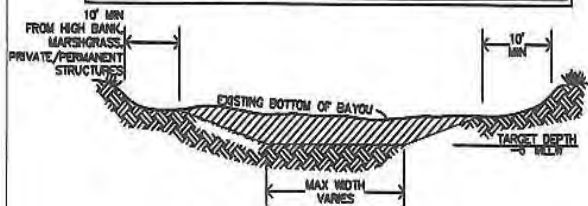
STARK BAYOU



MATCHLINE A - A



DREDGING LEGEND	
<b>ALIGNMENT A</b>	Sta. 0+00 - Sta. 18+50 = 50' Channel Width @ -6' MLLW Depth
<b>ALIGNMENT B</b>	Sta. 0+00 - Sta. 20+70 = 40' Channel Width @ -6' MLLW Depth



**TYPICAL SECTION DETAIL**  
NTS

**MASTER DREDGING PLAN**

SCALE: 1" = 60'

MASTER DREDGING PLAN

STARK BAYOU  
DREDGING PROJECT  
JACKSON COUNTY, MISSISSIPPI

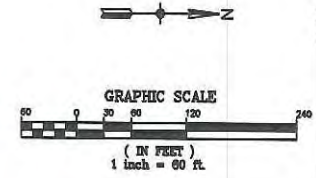
**SEYMOUR ENGINEERING**  
1000 N. UNIVERSITY BLVD., SUITE 100  
JACKSON, MISSISSIPPI 39201  
PHONE: 601-955-1000 FAX: 601-955-1005

C1

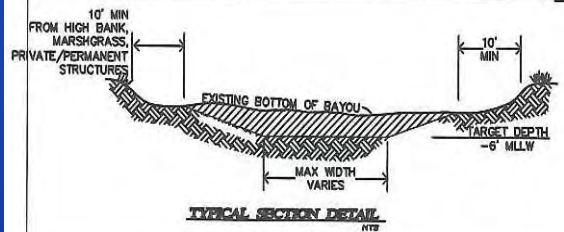


**GENERAL NOTES :**

1. ALL SURVEY ELEVATIONS SHOWN REFLECT MEAN LOWER LOW WATER (MLLW).
2. AERIAL IMAGERY PROVIDED BY JACKSON COUNTY AND HAS NOT BEEN GEOREFERENCED IN RELATION TO HYDROGRAPHICAL SURVEY DATA SHOWN. DATE OF IMAGERY IS UNKNOWN.
3. ALL SURVEY ELEVATIONS REPRESENT CONDITIONS OF THE DREDGING AREAS AND ANY DISCREPANCIES SHOULD BE IDENTIFIED AND FIELD VERIFIED BY THE CONTRACTOR AND BROUGHT TO THE ATTENTION OF THE ENGINEER PRIOR TO COMMENCEMENT OF ANY WORK.



DREDGING LEGEND	
<b>ALIGNMENT A</b>	Sta. 0+00 - Sta. 19+80 = 50' Channel Width @ -6' MLLW Depth
<b>ALIGNMENT B</b>	Sta. 0+00 - Sta. 20+70 = 40' Channel Width @ -6' MLLW Depth



Scale	
Drawn	K. W. W.
Checked	K. W. W.
Approved	K. W. W.
Date	02/17/2011

Sheet Title  
**MASTER DREDGING PLAN**

Project Name  
**STARK BAYOU  
DREDGING PROJECT  
JACKSON COUNTY, MISSISSIPPI**

**SEYMOUR ENGINEERING**  
PHONE: 228-385-2350 FAX: 228-385-2353  
925 TOWN OF MARINO DRIVE, SUITE 0  
BAYLUM, MISSISSIPPI 39002

Sheet  
**C2**  
Project No.  
10-009.03

**MASTER DREDGING PLAN**

SCALE: 1" = 60'

# Project Chronology

- April 19, 2011: Project was presented to the CMR and was approved as recommended
- January 7, 2021: Received a request for a Permit Extension by Seymour Engineering

## Recommendation

- Based upon departmental review and evaluation, staff recommends approval of the applicant's extension request



**Request for Permit by:  
Mississippi Department of Marine Resources  
DMR 20-000052**

- **Location: South of Deer Island in Biloxi, Harrison County, MS.**
- **Use District: (G) General Use District**
- **Project Purpose/Need: To offer additional areas to allow for commercial off-bottom oyster aquaculture. Provide jobs, supplement traditional oyster harvest, and nearshore habitat enhancement.**

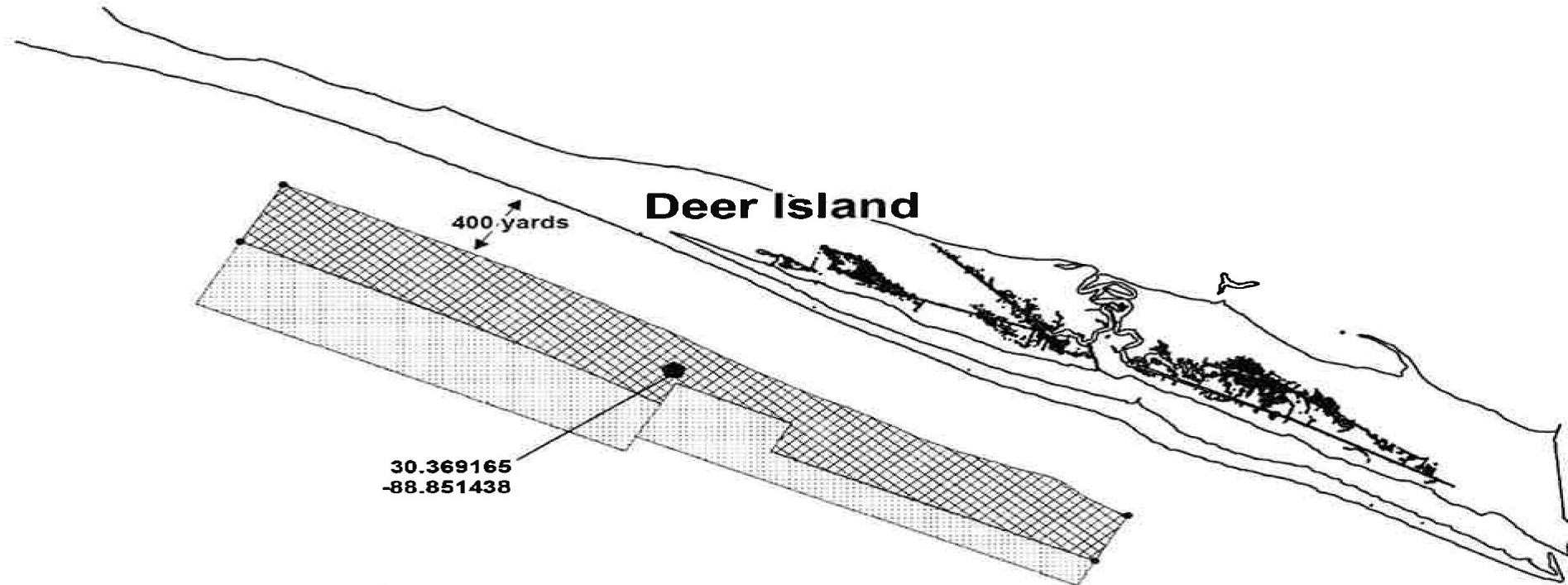


# Project Description

- **Impacts:**
  - **Floating baskets: Maximum of 12% coverage of site total**
  - **Screw-down anchors**
  - **Pilings:**
    - **Wooden: up to 40 pilings/acre (walking longline only)**
    - **PVC: up to 1,200 2-inch diameter per acre (walking longline only)**
- **Coastal Wetlands Use Plan Change**
  - **From a (G) General Use classification to a (S-2) Special Use – Leased wetlands for oyster cultivation and a (S-3) Special Use – Leased wetlands by the State for other purposes-in this case: off bottom oyster cultivation.**
  - **Chapter 8, Section 2, Part I.E. 2.b.ii of the MCP and Title 22, Part 23, Chapter 7, Section 105.06.02: “There is a significant public benefit in the activity, impacts to public access and adverse environmental impacts have been minimized, the general public as well as governmental agencies were notified of the project, and a public hearing was held.”**

# Attachment “B”

## Deer Island Off-Bottom Oyster Aquaculture Project – Expansion II



- ~~~~~ Deer Island Shoreline
- ▨ Proposed 245 Acres
- ▤ Previously Permitted Area

Corner	Latitude	Longitude
SE	30.360330	-88.836222
NE	30.362409	-88.835039
NW	30.377716	-88.865564
SW	30.375097	-88.867074

## Public and Agency Notification

- Notification of this project appeared in *The Sun Herald* on September 13, 20, 27, 2020 and January 10, 17, 24, 2021. A public hearing was held on January 26, 2021(\*).
  - No public comments were received
- MS DEQ: Currently reviewing the project
- MS DAH: No objections
- MS DWFP: No comments
- MS SOS: Lease will be required

# Recommendation

- The staff of the Department of Marine Resources has conducted a thorough evaluation of the project and has made findings on the decision factors in accordance with the Mississippi Coastal Program (MCP). These findings have been provided to the Commissioners. Based on the results of these findings, it has been determined that the project is consistent with the MCP because it:
  - Provides a public benefit by creating jobs and providing a product that is in demand and not currently available through local, traditional harvest.
  - Provides nearshore habitat for recreational and commercial fish and invertebrate species
- Staff recommends approval of the Coastal Wetlands Use Plan Change and Permit contingent on water quality certification from MDEQ





ENHANCE ★ PROTECT ★ CONSERVE

# Mississippi Department of Marine Resources

Agency Financial Results  
as of January 31, 2021

Key Metrics:

- State Revenue of \$3.9M
- Agency Revenue of \$14.1M
- State Net Income of \$459K
- Agency Net Income of \$1M

**MISSISSIPPI DEPARTMENT OF MARINE RESOURCES**  
**Income Statement - Fiscal Year 2021**  
**As of January 31, 2021**

	<b>Federal :</b>		<b>Operating</b>		
	<b>State</b>	<b>GOMESA PHII:</b>	<b>Subtotal</b>	<b>Tidelands</b>	<b>Total DMR</b>
		<b>NFWF:</b>			
<b>Revenue:</b>					
Transfer in from Other Governments	-	-	-	-	-
Off-road Fuel Tax	3,050,000	-	3,050,000	-	3,050,000
Federal/NonFederal Grants	-	1,839,985	1,839,985	-	1,839,985
Sales Revenue	612,708	-	612,708	-	612,708
Indirect Cost Recovery	247,360	-	247,360	-	247,360
Other Revenue	60,581	867,362	927,943	7,456,901	8,384,843
<b>Current Budget Year Revenue:</b>	<b>3,970,648</b>	<b>2,707,347</b>	<b>6,677,995</b>	<b>7,456,901</b>	<b>14,134,895</b>
<b>Expenditures:</b>					
Salaries, Wages, Fringe	2,993,208	1,675,061	4,668,269	560,847	5,229,116
Travel	3,306	-	3,306	-	3,306
Contractual Services	360,025	786,230	1,146,255	230,903	1,377,158
Commodities	149,286	105,982	255,268	15,683	270,951
Other than Equipment	-	-	-	-	-
Equipment	5,555	44,109	49,664	-	49,664
Vehicles	-	-	-	-	-
Wireless Devices	-	-	-	-	-
Subsidies, Loans, and Grants	(106)	3,373,915	3,373,810	2,820,686	6,194,495
<b>STATEXP</b>	<b>-</b>	<b>-</b>	<b>-</b>	<b>-</b>	<b>-</b>
<b>Current Budget Year Expenditures:</b>	<b>3,511,275</b>	<b>5,985,297</b>	<b>9,496,572</b>	<b>3,628,118</b>	<b>13,124,691</b>
<b>Current Budget Year Net Income/(Loss):</b>	<b>\$ 459,373</b>	<b>\$ (3,277,951)</b>	<b>\$ (2,818,578)</b>	<b>\$ 3,828,782</b>	<b>\$ 1,010,204</b>

# Financial Budget Comparison

- After seven months of Fiscal Year 2021:

**MISSISSIPPI DEPARTMENT OF MARINE RESOURCES**  
**2021 Budget Comparison**  
**As of January 31, 2021**

	<i>Actual Year to Date Expenditures</i>			<i>Budget Year Totals</i>			<i>Percent Remaining</i>		
	<b>Operating</b>	<b>Tidelands</b>	<b>Total</b>	<b>Operating</b>	<b>Tidelands</b>	<b>Total</b>	<b>Operating</b>	<b>Tidelands</b>	<b>Total</b>
<b>Expenditures:</b>									
Salaries, Wages, Fringe	\$ 4,668,269	\$ 560,847	\$ 5,229,116	\$ 10,608,904	\$ 1,259,291	\$ 11,868,195	56.0%	55.5%	55.9%
Travel	3,306	-	3,306	164,806	25,000	189,806	98.0%	100.0%	98.3%
Contractual Services	1,146,255	230,903	1,377,158	7,332,714	1,251,000	8,583,714	84.4%	81.5%	84.0%
Commodities	255,268	15,683	270,951	2,966,274	360,000	3,326,274	91.4%	95.6%	91.9%
Other than Equipment	-	-	-	-	75,000	75,000	0.0%	100.0%	100.0%
Equipment	49,664	-	49,664	527,729	-	527,729	90.6%	0.0%	90.6%
Vehicles	-	-	-	155,000	-	155,000	100.0%	0.0%	0.0%
Wireless Devices	-	-	-	3,750	-	3,750	100.0%	0.0%	100.0%
Subsidies, Loans, and Grants	3,373,810	2,820,686	6,194,495	30,040,854	4,378,986	34,419,840	88.8%	35.6%	82.0%
<b>Total Expenditures:</b>	<b>\$ 9,496,572</b>	<b>\$ 3,628,118</b>	<b>\$ 13,124,691</b>	<b>\$ 51,800,031</b>	<b>\$ 7,349,277</b>	<b>\$ 59,149,308</b>	<b>81.7%</b>	<b>50.6%</b>	<b>77.8%</b>

- Operating Funds have 81.7% of Budget remaining
- Tidelands Trust Fund has 50.6% of Budget remaining



ENHANCE ★ PROTECT ★ CONSERVE

# 2021 Derelict Crab Trap Cleanup Results

Jason Saucier  
February 16, 2021



# Summary Result of 2021 Cleanup

- Public cleanup was conducted January 28-30
- 310 traps recovered by volunteers, fishermen and MDMR staff during this year's event
  - Ocean Springs Harbor – 195
  - Pascagoula Point Park – 78
  - Bayou Caddy - 39
- Since 1999 over 22,250 traps have been recovered through this program





We would like to recognize Owens Scrap Metal, MSU Extension staff, GCRL Center for Fisheries Research and Development staff, participating commercial fishermen, and public volunteers for their assistance with this year's cleanup.







ENHANCE ★ PROTECT ★ CONSERVE

# Spotted Sea Trout Endorsement Review

Staff

February 16, 2021

# Current SST Endorsement Language (Effective 11/15/2018)

## Title 22 Part 7 Chapter 9

108 From and after February 1<sup>st</sup>, 2013 the annual Total Allowable Catch (TAC) for commercial landings of Spotted Seatrout (*Cynoscion nebulosus*) will be set at fifty thousand (50,000) pounds. The 2015 commercial fishing season for landing Spotted Seatrout shall commence on February 1<sup>st</sup>, 2015 and end October 31, 2015 and each subsequent year thereafter. The commercial TAC for the fishing season shall be divided into two periods as follows: February 1<sup>st</sup> – May 31<sup>st</sup> twenty-five thousand pounds (25,000); June 1<sup>st</sup> – October 31<sup>st</sup> twenty-five thousand pounds (25,000). In the event the commercial TAC is not met or exceeded in the first time period (February 1<sup>st</sup> – May 31<sup>st</sup>) the pounds shall be added or subtracted to the second time period (June 1<sup>st</sup> – October 31<sup>st</sup>).

109 Beginning January 1, 2019 individuals commercially harvesting Spotted Seatrout (*Cynoscion nebulosus*) must possess a Spotted Seatrout endorsement (\$10.00) in addition to a current applicable harvester's license. To qualify for this endorsement an application must be completed. For the 2019 fishing season the fisher must present documentation that a minimum of twenty (20) percent of their taxable income came from commercial fishing activities in a previous tax year between 2013-2018. Documentation shall be a copy of the appropriate filed IRS tax form showing the applicant's taxable income for one of those years. A Marine Fisheries Trip Ticket officer will then run a sales summary for the year chosen using trip tickets to determine if the eligibility requirement has been met. This endorsement will be valid for a one-year period at which time a new application with qualifying documents for the previous tax year shall be submitted for a new endorsement. The endorsement will be valid from January 1<sup>st</sup> – December 31<sup>st</sup> each year. In the event of a hardship approved by the Commission, the department may consider qualifying documents for the two years prior to the onset of the hardship.



# Proposed Language Change – Option 1

- Alter commercial season from February – October to January – December
- Change requirements to those established prior to 2019
  - \$5,000 of seafood product or 10% of net income from commercial fishing activities
  - Link to Trip Ticket system needed

# Title 22 Part 7 Chapter 9 Language – Option 1

108 The annual Total Allowable Catch (TAC) for commercial landings of Spotted Seatrout (*Cynoscion nebulosus*) will be set at fifty thousand (50,000) pounds. The commercial fishing season for landing Spotted Seatrout shall commence on January 1<sup>st</sup> and end December 31<sup>st</sup> each year. The commercial TAC for the fishing season shall be divided into two periods as follows: January 1<sup>st</sup> – June 30<sup>th</sup> twenty-five thousand pounds (25,000); July 1<sup>st</sup> – December 31<sup>st</sup> twenty-five thousand pounds (25,000). In the event the commercial TAC is not met or exceeded in the first time period (January 1<sup>st</sup> – June 30<sup>th</sup>) the pounds shall be added or subtracted to the second time period (July 1<sup>st</sup> – December 31<sup>st</sup>).

109 Individuals harvesting spotted seatrout (*Cynoscion nebulosus*) for sale must possess a spotted seatrout endorsement (\$10.00) in addition to a current applicable harvester's license. To qualify for this endorsement an application must be completed. The fisher must have a minimum of five thousand dollars (\$5000.00) of seafood product sales in any twelve (12) consecutive months in the Trip Ticket system or the fisher must present proof that ten (10) percent of their net income came from commercial fishing activities in a previous tax year. A Marine Fisheries Trip Ticket Officer will run a sales summary for the year chosen using trip tickets to determine if the eligibility requirement has been met, or the fisher can have a licensed tax preparer possessing a PTIN (Preparer Tax Identification Number) complete a form provided by the DMR and submit a notarized copy the department. This endorsement will be valid for a three year period at which time a new application with qualifying documents must be submitted for a new endorsement.

# Proposed Language Change – Option 2

- Alter commercial season from February – October to January – December
- Change corresponding season segment to six-month periods
- Change requirement for qualification from 20% of taxable income to \$1,000 of Finfish caught and sold by applicant in the MDMR Trip Ticket system



# Title 22 Part 7 Chapter 9 Language – Option 2

108 The annual Total Allowable Catch (TAC) for commercial landings of Spotted Seatrout (*Cynoscion nebulosus*) will be set at fifty thousand (50,000) pounds. The commercial fishing season for landing Spotted Seatrout shall commence on January 1<sup>st</sup> and end December 31<sup>st</sup> each year. The commercial TAC for the fishing season shall be divided into two periods as follows: January 1<sup>st</sup> – June 30<sup>th</sup> twenty-five thousand pounds (25,000); July 1<sup>st</sup> – December 31<sup>st</sup> twenty-five thousand pounds (25,000). In the event the commercial TAC is not met or exceeded in the first time period (January 1<sup>st</sup> – June 30<sup>th</sup>) the pounds shall be added or subtracted to the second time period (July 1<sup>st</sup> – December 31<sup>st</sup>).

109 Individuals commercially harvesting Spotted Seatrout (*Cynoscion nebulosus*) must possess a Spotted Seatrout endorsement (\$10.00) in addition to a current applicable harvester's license. To qualify for this endorsement an application must be completed. For the 2021 fishing season the fisher must select a calendar year between 2016 and 2020 in which they caught and sold at least one thousand (\$1,000) dollars of finfish. A Marine Fisheries Trip Ticket officer will then run a sales summary for the year chosen using trip tickets to determine if the eligibility requirement has been met. This endorsement will be valid for a one-year period at which time a new application shall be submitted for a new endorsement. A Trip Ticket Officer will then run a sales summary for the previous year verifying the fisher had a minimum of one thousand (\$1,000) dollars of qualifying finfish sales in the Trip Ticket system. The endorsement will be valid from January 1<sup>st</sup> – December 31<sup>st</sup> each year. In the event of a hardship approved by the Executive Director, the department may consider qualifying documents for the two years sales one year prior to the onset of the hardship.