



ENHANCE ★ PROTECT ★ CONSERVE

# Mississippi Advisory Commission on Marine Resources

July 19, 2022



ENHANCE ★ PROTECT ★ CONSERVE

# Employment, Contracts and Procurement Updates July 19, 2022

# Employment Updates

- Joshua Lambert – from Contractor to Maintenance/Grounds Manager – Lyman Fish Hatchery – 06.16.22
- Michael Reid – from Contractor to Specialized Trades Supervisor – Lyman Fish Hatchery – 07.01.22
- Nadine Ross – from Contractor to Environmental Natural Resources Technician II – Marine Fisheries - 07.05.22
- Cameron Keys – New Hire – Law Enforcement Officer I (Private) – Marine Patrol – 06.16.22
- Hailey Nason – New Hire – Law Enforcement Officer II (Corporal) – Marine Patrol – 06.16.22
- Kristina Broussard – Promoted to Seafood Technology Bureau Director – Marine Fisheries – 06.16.22
- Sierra Ortiz – Promoted to ENRS III – Coastal Resource Management – 07.01.22
- Jason Rider – Promoted to Shellfish Bureau Director – Marine Fisheries – 06.01.22



ENHANCE ★ PROTECT ★ CONSERVE

# Mississippi Advisory Commission on Marine Resources

July 19, 2022





ENHANCE ★ PROTECT ★ CONSERVE

# Actions Update for July 19, 2022 Commission Meeting

# Discussed at the June 2022 meeting:

- The Commission recommended and the Director approved the following motions:
  - 1) Permit, Variance, and Use Plan Change for Mississippi Department of Environmental Quality for the Living Shoreline Extension between Bayou Bolan and Bayou Caddy in Hancock County, MS, contingent upon clearance from MDEQ and MDAH.
  - 2) Changes to Title 22, Part 18 Rules and Regulations for Special Permits in the State of Mississippi be forwarded to the Secretary of State's Office for Final Adoption.

3) State Saltwater Finfish Records:

Conventional Tackle:

1. Blackberry Rosefish (*Helicolenus dactylopterus*) 2 lbs. 11.2 oz. – John Wright

All Tackle Finfish Records

1. Bigeye (*Priacanthus arenatus*) – 2 lbs. 11.52 oz. – Harley Havard
2. Unicorn Tilefish (*Aluterus monoceros*) – 5 lbs. 9.8 oz. – Brandon Powell



ENHANCE ★ PROTECT ★ CONSERVE

# Mississippi Advisory Commission on Marine Resources

July 19, 2022

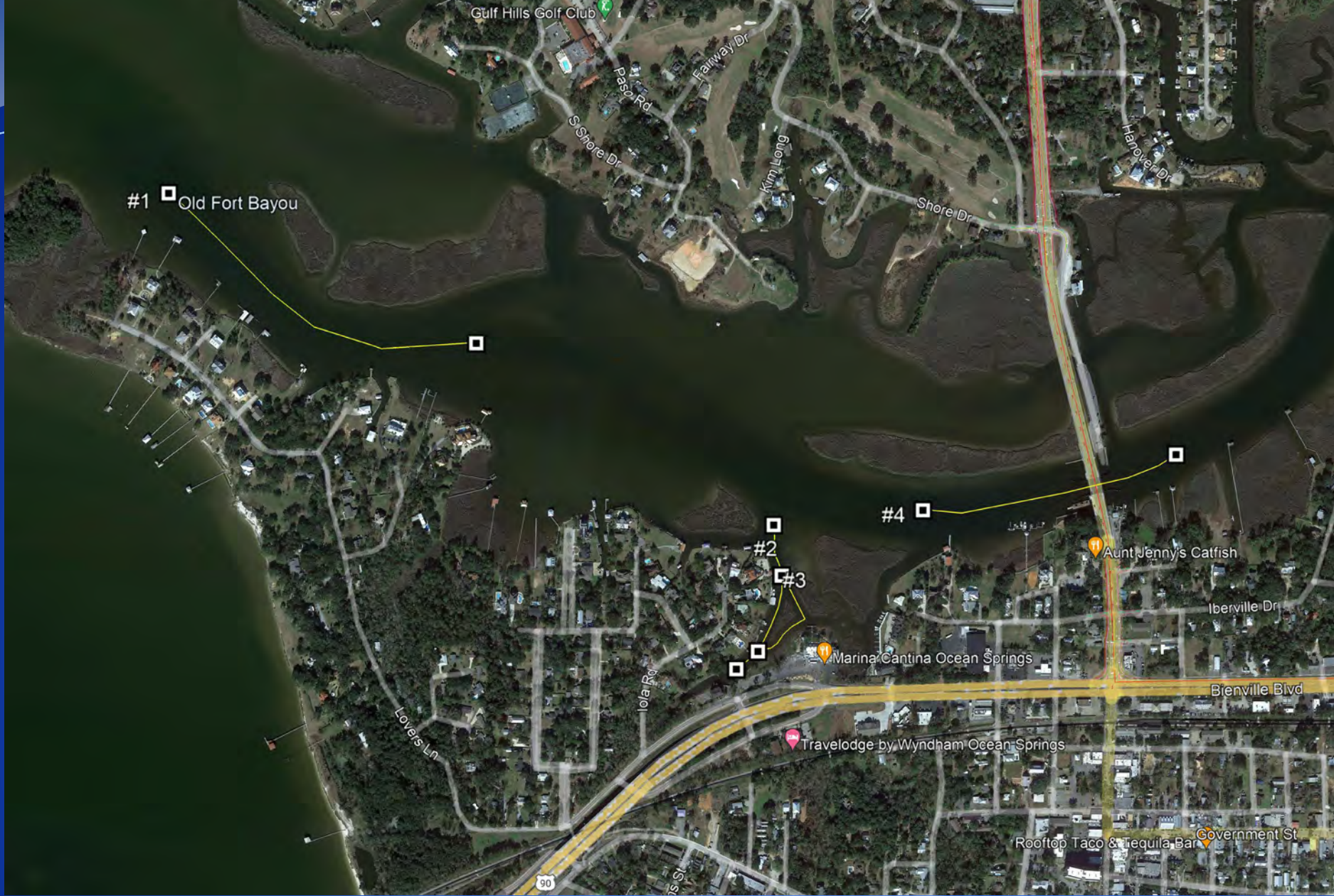




ENHANCE ★ PROTECT ★ CONSERVE

# NO WAKE ZONE PROPOSAL

Fort Bayou and surrounding areas



ENHANCE ★ PROTECT ★ CONSERVE



# Affects to boaters

- Leg #1-Vessels traveling from the proposed coordinates will be at idle speed for 4 minute and 57 seconds.
- Leg #2-Vessels traveling from the proposed coordinates will be at idle speed for 3 minutes and 14 seconds.
- Leg #3-Vessels traveling from the proposed coordinates will be at idle speed for 1 minutes and 33 seconds.
- Leg #4-Vessels traveling from the proposed coordinates will be at idle speed for 3 minutes and 22 seconds.

# Special considerations

- Leg #1 due to length of requested zone, its proximity to open water traffic and environmental conditions, and width of bayou (400') for wake mitigation before impacting property (not recommended)
- Legs #3 & #4 due to high traffic in the area and proximity to multiple residences (recommended)
- Leg #4 will only be an extension of a state required no wake zone due to the public boat ramp (recommended)



# Staff Recommendation

- The Office of Marine Patrol recommends the establishment of a No Wake Zone for the (3) specified locations, based on normal operation and vessel speed in relation to the public access areas in which people fish, boat and socialize.



ENHANCE ★ PROTECT ★ CONSERVE

# Mississippi Advisory Commission on Marine Resources

July 19, 2022

# Wetland Permitting Actions Jan-Jun 2022

<b>Total Actions</b>	
<b>Total</b>	<b>467</b>
Regulated Activities/ CZ Consistency Determinations	394
Reviews/ Pre-Application Meetings	56
Violations	17

# Wetland Permitting Actions Comparison

	1 <sup>st</sup> half 2019	1 <sup>st</sup> half 2020	1 <sup>st</sup> half 2021	1 <sup>st</sup> half 2022
Total Actions	396	276	472	467
Regulated Activities/ CZ Consistency Determinations	324	237	436	394
Reviews/ Pre-Application Meetings	54	31	30	56
Violations	12	8	6	17





ENHANCE ★ PROTECT ★ CONSERVE

# Mississippi Advisory Commission on Marine Resources

July 19, 2022



ENHANCE ★ PROTECT ★ CONSERVE

# Mississippi Department of Marine Resources

Agency Financial Results  
as of June 30, 2022

Key Metrics:

- State Revenue of \$5.7M
- Agency Revenue of \$53.2M
- State Net Income of (\$871K)
- Agency Net Income of \$23.3M

MISSISSIPPI DEPARTMENT OF MARINE RESOURCES  
 Income Statement - Fiscal Year 2022  
 As of June 30, 2022

	State	Federal : GOMESA PHII: NFWF:	Operating Subtotal	Tidelands	Total DMR
<b>Revenue:</b>					
Transfer in from Other Governments	58,518	12,460	70,978	-	70,978
Off-road Fuel Tax	3,050,000	-	3,050,000	-	3,050,000
Federal/NonFederal Grants	266,494	3,659,462	3,925,956	-	3,925,956
Sales Revenue	1,399,152	1,935	1,401,087	1,149	1,402,236
Indirect Cost Recovery	591,093	-	591,093	-	591,093
Other Revenue	418,333	32,448,630	32,866,963	11,369,965	44,236,928
Current Budget Year Revenue:	5,783,590	36,122,487	41,906,077	11,371,114	53,277,191
<b>Expenditures:</b>					
Salaries, Wages, Fringe	5,230,034	3,224,803	8,454,838	917,396	9,372,233
Travel	17,288	34,463	51,752	24,399	76,151
Contractual Services	855,380	2,267,319	3,122,700	753,882	3,876,582
Commodities	378,306	1,222,366	1,600,672	163,965	1,764,637
Other than Equipment	-	8,555	8,555	-	8,555
Equipment	102,077	311,931	414,008	68,453	482,461
Vehicles	-	6,500	6,500	-	6,500
Subsidies, Loans, and Grants	72,129	9,155,404	9,227,533	5,124,405	14,351,937
Current Budget Year Expenditures:	6,655,214	16,231,342	22,886,557	7,052,499	29,939,056
Current Budget Year Net Income/(Loss):	\$ (871,625)	\$ 19,891,145	\$ 19,019,520	\$ 4,318,615	\$ 23,338,135

# Financial Budget Comparison

- After twelve months of Fiscal Year 2022:

**MISSISSIPPI DEPARTMENT OF MARINE RESOURCES**  
**2022 Budget Comparison**  
**As of June 30, 2022**

	<i>Actual Year to Date Expenditures</i>			<i>Budget Year Totals</i>			<i>Percent Remaining</i>		
	<b>Operating</b>	<b>Tidelands</b>	<b>Total</b>	<b>Operating</b>	<b>Tidelands</b>	<b>Total</b>	<b>Operating</b>	<b>Tidelands</b>	<b>Total</b>
<b>Expenditures:</b>									
Salaries, Wages, Fringe	\$ 8,454,838	\$ 917,396	\$ 9,372,233	\$ 11,407,393	\$ 1,054,140	\$ 12,461,533	25.9%	13.0%	24.8%
Travel	51,752	24,399	76,151	158,996	25,000	183,996	67.5%	2.4%	58.6%
Contractual Services	3,122,700	753,882	3,876,582	7,438,245	1,651,000	9,089,245	58.0%	54.3%	57.3%
Commodities	1,600,672	163,965	1,764,637	4,009,942	360,000	4,369,942	60.1%	54.5%	59.6%
Other than Equipment	8,555	-	8,555	8,555	-	8,555	0.0%	-	0.0%
Equipment	414,008	68,453	482,461	726,857	175,000	901,857	43.0%	60.9%	46.5%
Vehicles	6,500	-	6,500	421,500	250,000	671,500	98.5%	0.0%	99.0%
Wireless Devices	-	-	-	6,250	-	6,250	100.0%	0.0%	100.0%
Subsidies, Loans, and Grants	9,227,533	5,124,405	14,351,937	72,175,817	8,711,357	80,887,174	87.2%	41.2%	82.3%
<b>Total Expenditures:</b>	<b>\$ 22,886,557</b>	<b>\$ 7,052,499</b>	<b>\$ 29,939,056</b>	<b>\$ 96,353,555</b>	<b>\$ 12,226,497</b>	<b>\$ 108,580,052</b>	<b>76.2%</b>	<b>42.3%</b>	<b>72.4%</b>

- Operating Funds have 76.2% of Budget remaining
- Tidelands Trust Fund has 42.3% of Budget remaining





ENHANCE ★ PROTECT ★ CONSERVE

# Mississippi Advisory Commission on Marine Resources

July 19, 2022