



ENHANCE ★ PROTECT ★ CONSERVE

# Mississippi Advisory Commission on Marine Resources

December 13, 2022



ENHANCE ★ PROTECT ★ CONSERVE

# Employment, Contracts and Procurement Updates December 13, 2022

# Employment Updates

- Joshua Waters – Promoted to Environmental/Natural Resources Specialist III – Marine Fisheries (Finfish) – 11.16.22



**ENHANCE ★ PROTECT ★ CONSERVE**



ENHANCE ★ PROTECT ★ CONSERVE

# Mississippi Advisory Commission on Marine Resources

December 13, 2022





ENHANCE ★ PROTECT ★ CONSERVE

# Actions Update for December 13, 2022 Commission Meeting

# Discussed at the November 2022 meeting:

- The Commission recommended and the Director approved the following motions:
  - 1) Approval of the requested variance, use plan change and permit as requested by the MDMR Beneficial Use Program to fill 900 acres of unvegetated water bottoms to construct a beneficial use site in the MS Sound approximately 7 miles south of Pass Christian and 5.5 miles west of the western tip of Cat Island, Harrison County, MS.
  - 2) Approval of the following State Saltwater Finfish Records.
    - a. All Tackle
      1. Dog Snapper (*Lutjanus jocu*) – 24 lbs. 2.4 oz. – Mark Kleinpeter



ENHANCE ★ PROTECT ★ CONSERVE

# Mississippi Advisory Commission on Marine Resources

December 13, 2022



ENHANCE ★ PROTECT ★ CONSERVE

# Mississippi Department of Marine Resources

Coastal Resources Management  
December 2022

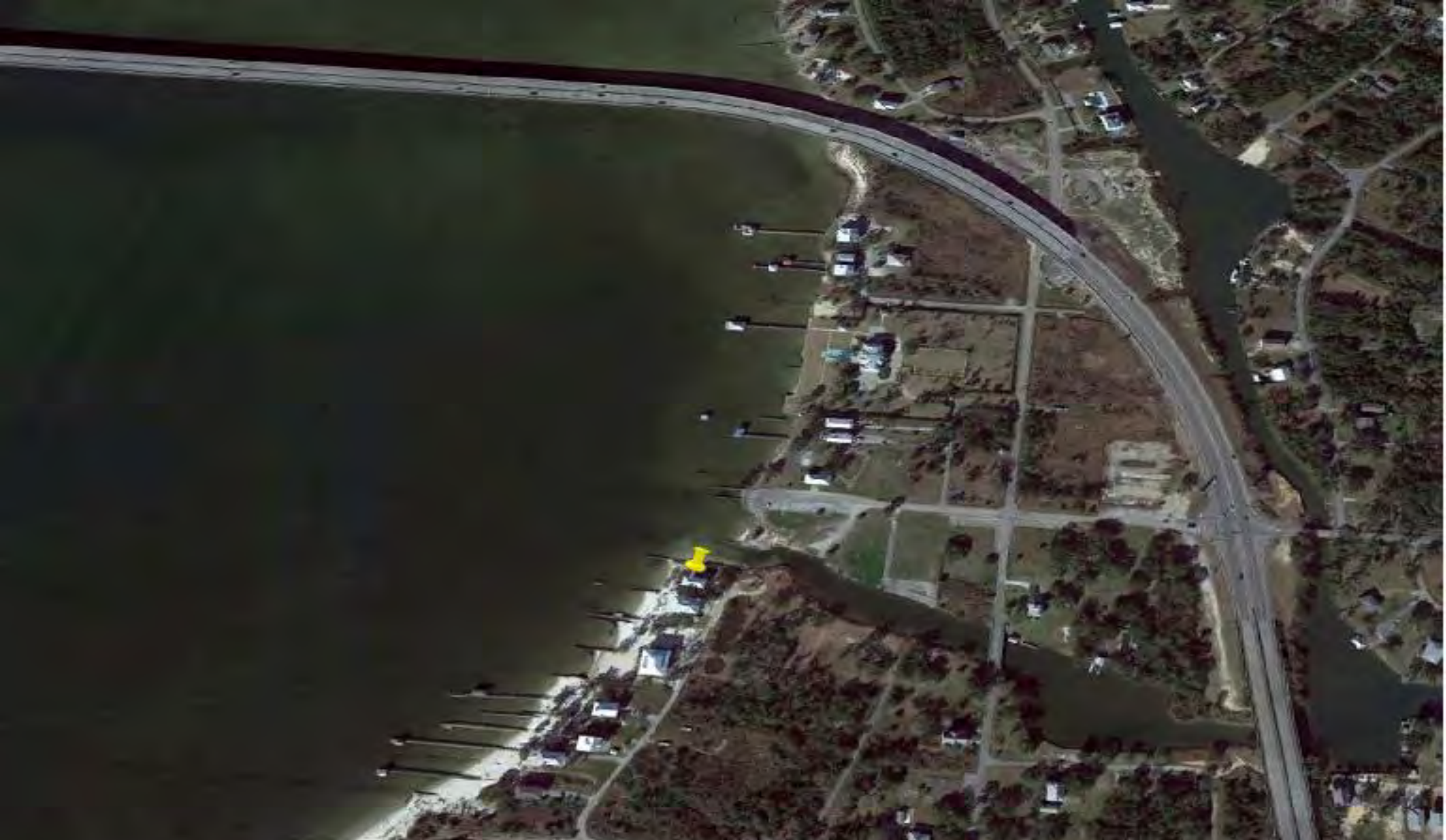


**Request for Permit by:  
Mike Fitzpatrick  
DMR21-000502**

- **Location: St. Louis Bay  
439 1<sup>st</sup> Avenue  
Harrison County, Pass Christian**
- **Use District: (G) General Use District**
- **Agent: Lamulle Construction, LLC**

# Project Description

- **Impacts**
  - **Jetty: 90 feet in length**

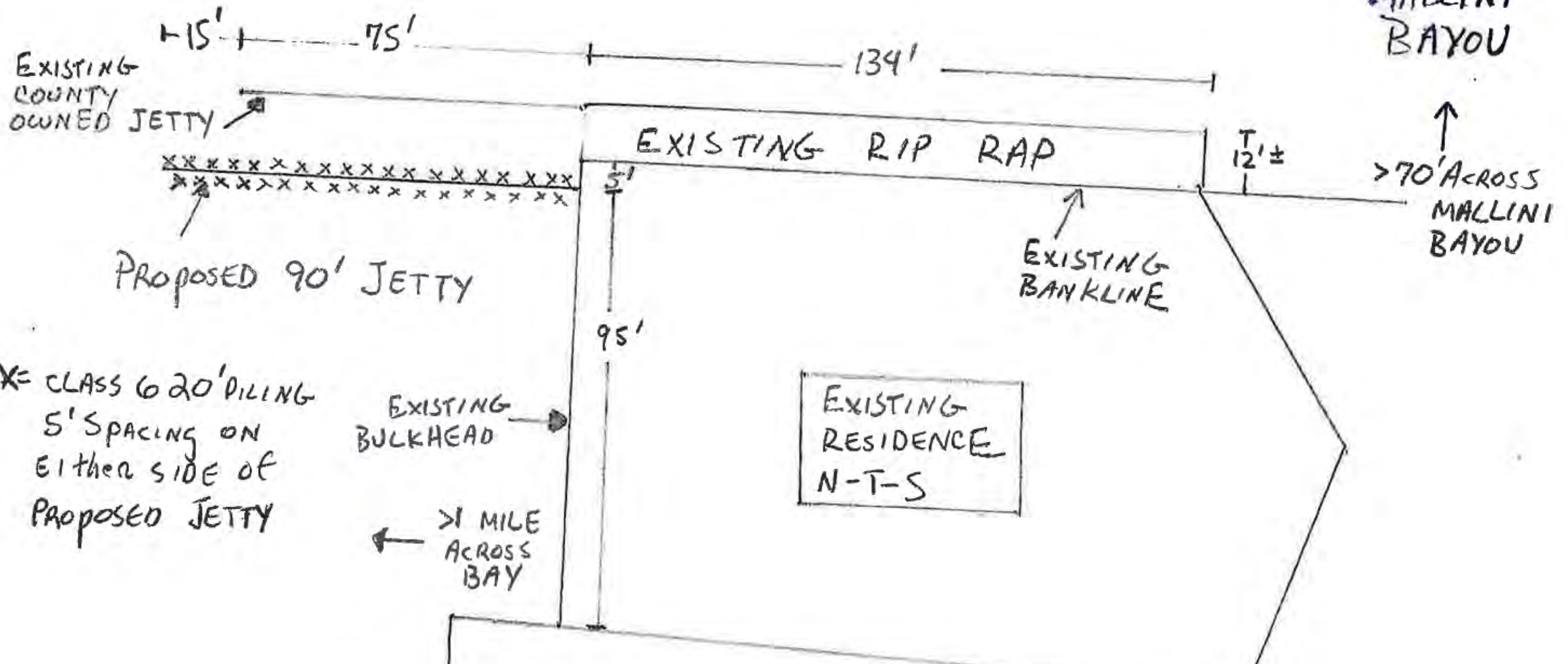




ST  
LOUIS  
BAY



PLAN VIEW



\* CLASS 6 20' PILING  
5' SPACING ON  
EITHER SIDE OF  
PROPOSED JETTY







# Applicable Decision Factors

continued

- **b) Coastal Wetlands Use Plan...**
  - **The proposed project is allowable within the General Use District**

ENHANCE ★ PROTECT ★ CONSERVE

# Applicable Decision Factors

continued

- **c) Variance to the MS Coastal Program...**
  - **Miss. Admin Code Title 22, Part 23 (MS Coastal Program), Chapter 8, Section 103.09**
    - “Groins and jetties to trap sediments are allowed only as a means to reduce shoaling of navigable channels and boat basins.”
  - **Justified under Miss Admin Code Title 22, Part 23 (MS Coastal Program), Chapter 8, Section 118.01**
    - **Impacts to Coastal Wetlands would be no worse than if the guidelines were followed**
      - **The project is a reconstruction of a historic jetty**
      - **A sediment transport study has been completed showing no negative effect**
      - **Harrison County supports the project**

ENHANCE ★ PROTECT ★ CONSERVE

# Applicable Decision Factors

continued

- **I) Comments...**
  - **Public Notice**
    - Notification of the project appeared in the Sun Herald on September 13, September 20, and September 27, 2022
      - No public comments were received
  - **MS DEQ: No comments were received**
  - **MS DAH: No objections**
  - **MS SOS: No objections**
  - **MS DWFP: No comments were received**

ENHANCE ★ PROTECT ★ CONSERVE



# Staff Recommendation

- The staff of the Department of Marine Resources has conducted a thorough evaluation of the project and has made findings on the decision factors in accordance with the Mississippi Coastal Program (MCP). Based on the results of these findings, it has been determined that the project is consistent with the MCP.
- Staff requests a motion that the Commission recommend to the Executive Director:
  - Approve the Requested Variance
  - Approve the Permit as Requested



ENHANCE ★ PROTECT ★ CONSERVE

# Mississippi Advisory Commission on Marine Resources

December 13, 2022



ENHANCE ★ PROTECT ★ CONSERVE

# Mississippi

## Department of Marine Resources

Agency Financial Results  
as of November 30, 2022

Key Metrics:

- State Revenue of \$4.3M
- Agency Revenue of \$17.2M
- State Net Income of \$1.5M
- Agency Net Income of \$5.9M

<b>MISSISSIPPI DEPARTMENT OF MARINE RESOURCES</b>					
<b>Income Statement - Fiscal Year 2023</b>					
<b>As of November 30, 2022</b>					
	<b>Federal :</b>				
	<b>GOMESA</b>				
	<b>PHII:</b>				
	<b>NFWF:</b>		<b>Operating</b>		
	<b>State</b>	<b>Non-Federal:</b>	<b>Subtotal</b>	<b>Tidelands</b>	<b>Total DMR</b>
<b>Revenue:</b>					
Off-road Fuel Tax	3,050,000	-	3,050,000	-	3,050,000
Federal/NonFederal Grants	114,011	1,247,467	1,361,478	-	1,361,478
Sales Revenue	504,736	-	504,736	-	504,736
Indirect Cost Recovery	509,426	-	509,426	-	509,426
Other Revenue	221,209	1,224,006	1,445,215	10,425,910	11,871,126
<b>Current Budget Year Revenue:</b>	<b>4,399,382</b>	<b>2,471,473</b>	<b>6,870,855</b>	<b>10,425,910</b>	<b>17,296,765</b>
<b>Expenditures:</b>					
Salaries, Wages, Fringe	2,342,226	1,373,912	3,716,138	421,306	4,137,444
Travel	15,321	22,838	38,159	6,276	44,435
Contractual Services	332,757	616,821	949,578	175,278	1,124,856
Commodities	129,551	94,368	223,919	45,477	269,396
Other than Equipment	10,072	-	10,072	15,109	25,181
Equipment	5,376	74,703	80,079	15,259	95,338
Vehicles	38,892	69,619	108,511	50,959	159,470
Subsidies, Loans, and Grants	1,786	4,617,845	4,619,631	845,894	5,465,525
<b>Current Budget Year Expenditures:</b>	<b>2,875,981</b>	<b>6,870,106</b>	<b>9,746,086</b>	<b>1,575,559</b>	<b>11,321,645</b>
<b>Current Budget Year Net Income/(Loss):</b>	<b>\$ 1,523,402</b>	<b>\$ (4,398,633)</b>	<b>\$ (2,875,231)</b>	<b>\$ 8,850,351</b>	<b>\$ 5,975,120</b>



# Financial Budget Comparison

- After five months of Fiscal Year 2023:

**MISSISSIPPI DEPARTMENT OF MARINE RESOURCES**  
**2023 Budget Comparison**  
**As of November 30, 2022**

	<i>Actual Year to Date Expenditures</i>			<i>Budget Year Totals</i>			<i>Percent Remaining</i>		
	<b>Operating</b>	<b>Tidelands</b>	<b>Total</b>	<b>Operating</b>	<b>Tidelands</b>	<b>Total</b>	<b>Operating</b>	<b>Tidelands</b>	<b>Total</b>
<b>Expenditures:</b>									
Salaries, Wages, Fringe	\$ 3,716,138	\$ 421,306	\$ 4,137,444	\$ 12,147,340	\$ 1,672,239	\$ 13,819,579	69.4%	74.8%	70.1%
Travel	38,159	6,276	44,435	163,461	25,000	188,461	76.7%	74.9%	76.4%
Contractual Services	949,578	175,278	1,124,856	7,791,650	1,651,000	9,442,650	87.8%	89.4%	88.1%
Commodities	223,919	45,477	269,396	3,078,291	360,000	3,438,291	92.7%	87.4%	92.2%
Other than Equipment	10,072	15,109	25,181	139,522	15,109	154,631	0.0%	-	0.0%
Equipment	80,079	15,259	95,338	628,613	175,000	803,613	87.3%	91.3%	88.1%
Vehicles	108,511	50,959	159,470	170,000	250,000	420,000	36.2%	0.0%	62.0%
Wireless Devices	-	-	-	6,250	-	6,250	100.0%	0.0%	100.0%
Subsidies, Loans, and Grants	4,619,631	845,894	5,465,525	99,592,881	8,306,899	107,899,780	95.4%	89.8%	94.9%
<b>Total Expenditures:</b>	<b>\$ 9,746,086</b>	<b>\$ 1,575,559</b>	<b>\$ 11,321,645</b>	<b>\$ 123,718,008</b>	<b>\$ 12,455,247</b>	<b>\$ 136,173,255</b>	<b>92.1%</b>	<b>87.4%</b>	<b>91.7%</b>

- Operating Funds have 92.1% of Budget remaining
- Tidelands Trust Fund has 87.4% of Budget remaining



ENHANCE ★ PROTECT ★ CONSERVE

# Mississippi Advisory Commission on Marine Resources

December 13, 2022



ENHANCE ★ PROTECT ★ CONSERVE

# State Saltwater Finfish Record

Trevor Moncrief  
December 13, 2022



The seal of the Mississippi Department of Marine Resources is a circular emblem. It features a central illustration of a bald eagle with its wings spread, perched on a stylized wave. The eagle is facing left. The text "MISSISSIPPI" is arched across the top of the seal, and "DEPARTMENT OF MARINE RESOURCES" is arched across the bottom. Two five-pointed stars are positioned on either side of the eagle's head.

# All Tackle Record

**ENHANCE ★ PROTECT ★ CONSERVE**

# All Tackle Fishing Record

Scrawled Filefish  
*Aluterus scriptus*

Old Record: 4.8 oz.

New Record: 3lbs 2.45oz.

Angler: Tommy Phelps

ENHANCE ★ PROTECT ★ CONSERVE



ENHANCE ★ PROTECT ★ CONSERVE





ENHANCE ★ PROTECT ★ CONSERVE



ENHANCE ★ PROTECT ★ CONSERVE

The seal of the Mississippi Department of Marine Resources is a circular emblem. It features a central illustration of a bird in flight over a body of water with waves. The text "MISSISSIPPI" is arched across the top, and "DEPARTMENT OF MARINE RESOURCES" is arched across the bottom. Two stars are positioned on either side of the central illustration.

# Motion to Recommend Adoption of New State Record

**ENHANCE ★ PROTECT ★ CONSERVE**



ENHANCE ★ PROTECT ★ CONSERVE

# Mississippi Advisory Commission on Marine Resources

December 13, 2022