



ENHANCE ★ PROTECT ★ CONSERVE

Mississippi Advisory Commission on Marine Resources

September 16, 2024



ENHANCE ★ PROTECT ★ CONSERVE

Employment, Contracts and Procurement Updates September 16, 2024

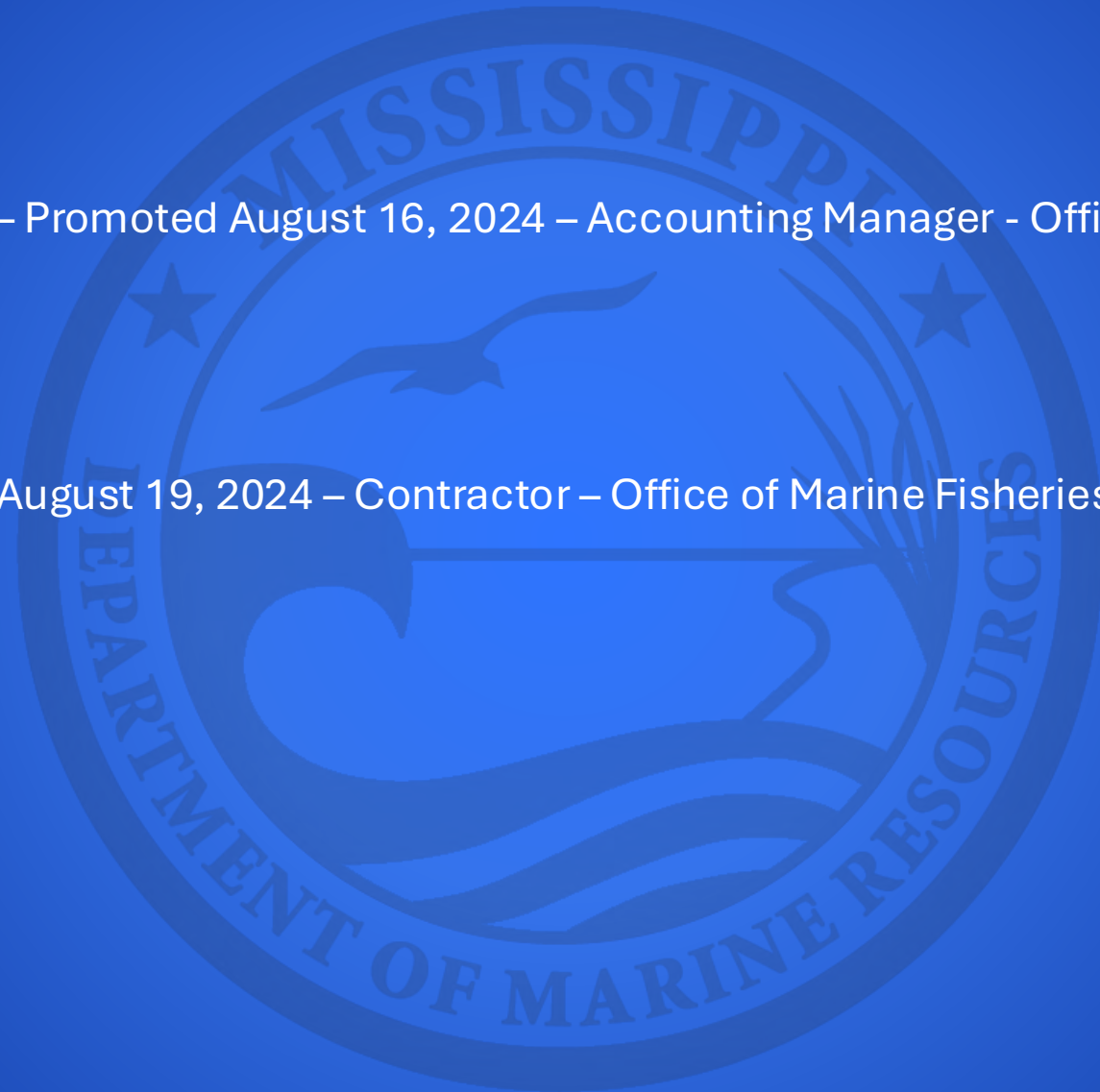
Employment Updates

Promotions:

- Joanna Miller – Promoted August 16, 2024 – Accounting Manager - Office of Finance & Accounting

New Hires:

- Rudy Balius – August 19, 2024 – Contractor – Office of Marine Fisheries



ENHANCE ★ PROTECT ★ CONSERVE

Contracts and Procurements for September 2024

| Service Contracts | | | | | |
|--------------------------|---------------------------|---------------|-------------|-----------------------|--|
| <u>Vendor</u> | <u>Procurement Method</u> | <u>Amount</u> | <u>Term</u> | <u>Funding Source</u> | <u>Commodity/Service Description</u> |
| P2G Farms | Invitation for Bid | 206,046.00 | 12 Months | NRDA | Mastication project at the GBNERR |
| WRENS Construction | Invitation for Bid | 134,500.00 | 12 Months | NRDA | Creation of staging area at the GBNERR |
| | | | | | |



ENHANCE ★ PROTECT ★ CONSERVE

Mississippi Advisory Commission on Marine Resources

September 16, 2024



ENHANCE ★ PROTECT ★ CONSERVE

Actions Update for September 16, 2024 Commission Meeting

Discussed at the August 2024 meeting:

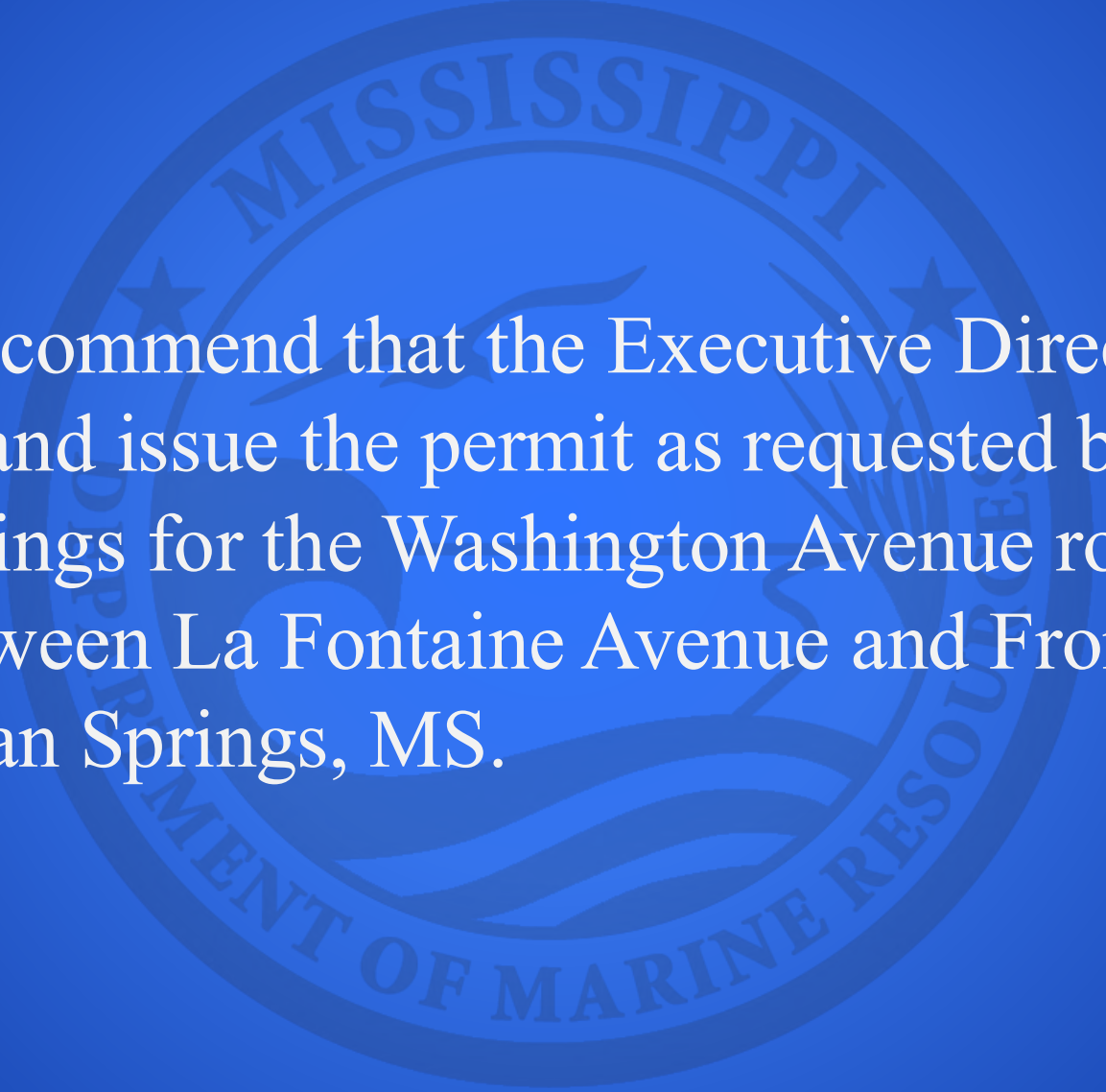
The Commission recommended and the Director approved the following motions:

Motion to elect the following officers to Mississippi Advisory Commission on Marine Resources:

- Cam Roberds as Chair
- Jonathon McLendon as Vice-Chair

Motion to amend the agenda and to move the following
MACMR meetings.

- Motion to move the September 2024 meeting to September 16, 2024 at 9:00 a.m.
- Motion to move the October 2024 meeting to October 22, 2024 at 9:00 a.m.

- 
- The seal of the Mississippi Department of Marine Resources is a circular emblem. It features a central figure of a fish, possibly a bluefish, leaping out of stylized waves. The word "MISSISSIPPI" is arched across the top, and "DEPARTMENT OF MARINE RESOURCES" is arched across the bottom. Two five-pointed stars are positioned on either side of the central fish.
- Motions to recommend that the Executive Director grant the variance and issue the permit as requested by the City of Ocean Springs for the Washington Avenue road elevation between La Fontaine Avenue and Front Beach Drive in Ocean Springs, MS.

- Motion for Commission to accept the presented On-Bottom Oyster Lease process

ENHANCE ★ PROTECT ★ CONSERVE

Motion to recommend the following State Saltwater Finfish Records:

a. Conventional Tackle:

1. Guachanche Barracuda (*Sphyraena guachancho*) – 1 lb. 3.36 oz.
– Maison Hallman
2. Golden Tilefish (*Lopholailus chamaeleonticeps*) – 28 lbs. 8.96 oz.
– Dustin Conway

b. All Tackle:

1. Whitebone Porgy (*Calamus leucosteus*) – 3 lbs. 8.0 oz.
– Garrett Jones

c. Fly Tackle:

1. Silver Perch (*Bairdiella chrysoura*) – 0 lbs. 2.4 oz.
– Alan Williams

d. Youth Conventional Tackle:

1. Blacknose Shark (*Carcharhinus acronotus*) – 16 lbs. 10.24 oz.
– Braxton Necaize
2. Atlantic Silverstripe Halfbeak (*Hyporhamphus unifasciatus*)
– 0 lbs. 2.24 oz.
– Rodie Arms

e. Youth Fly Tackle:

1. Crevalle Jack (*Caranx hippos*) – 25 lbs. 10.24 oz.
– Rodie Armes
2. Bluefish (*Pomatomus saltatrix*) – 2 lbs. 4.0 oz.
– Rodie Armes



ENHANCE ★ PROTECT ★ CONSERVE

Mississippi Advisory Commission on Marine Resources

September 16, 2024



ENHANCE ★ PROTECT ★ CONSERVE

Derelict Vessels

Office of Marine Patrol

What is a Derelict Vessel?

- aground without ability to extricate itself without mechanical assistance.
- sunk or resting on the bottom of a waterway.
- abandoned – how long. (unattended for more than ten days)
- wrecked, junked, or substantially dismantled.
- docked, grounded, or beached upon property of another without property owner's consent.
- obstructing a waterway or within 100 yds of state, county or municipal port.
- endangering life or property.
- broken loose or in danger of breaking loose from its anchor, mooring, or ties.
- it is not your neighbor's vessel just because you consider it an eyesore.



Hancock County



ENHANCE ★ PROTECT ★ CONSERVE

Harrison County



ENHANCE ★ PROTECT ★ CONSERVE

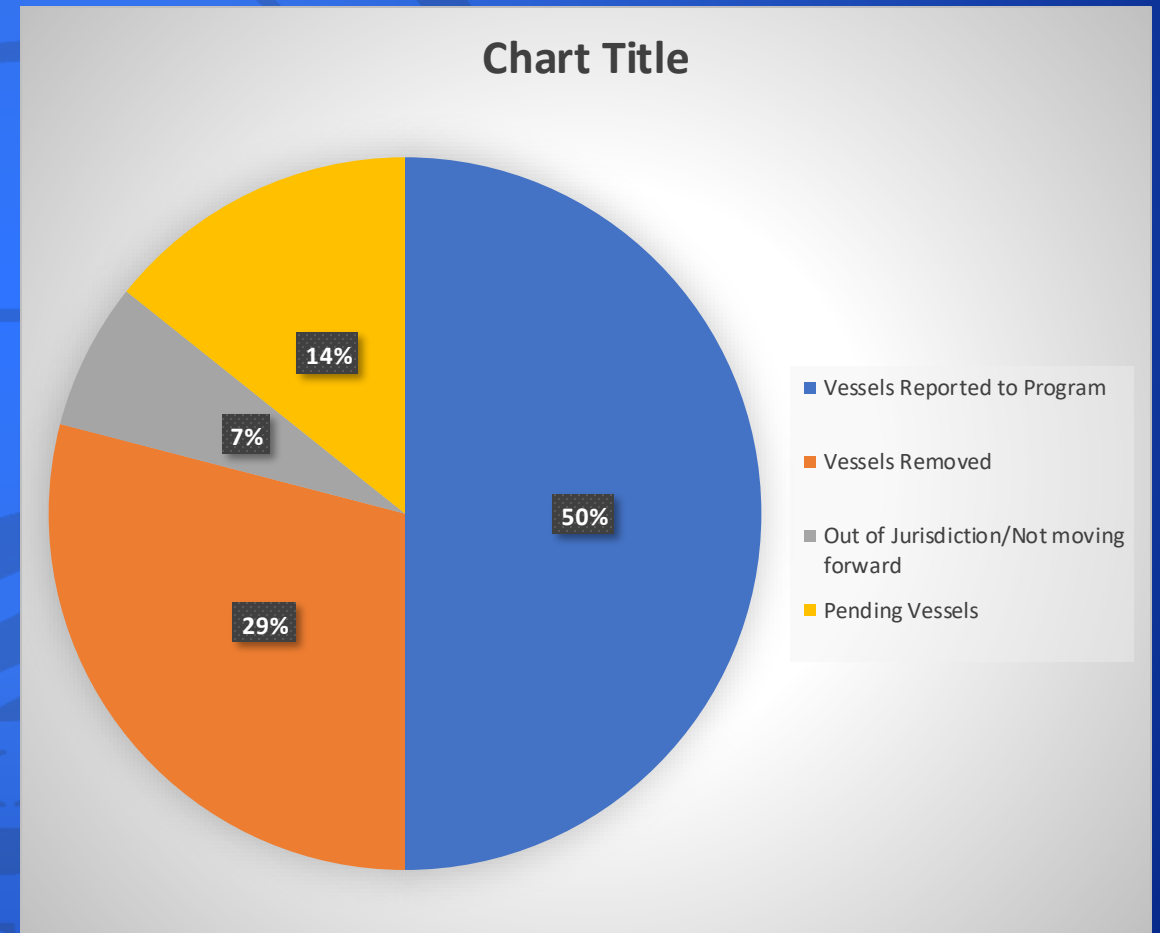
Jackson County



ENHANCE ★ PROTECT ★ CONSERVE

Office of Marine Patrol since August 2022

- 105 Reported to Program
- 61 Removed
- 14 Out of Jurisdiction/Not moving forward
- 30 Pending



Office of Marine Patrol since August 2022

Cost of removal is an average of \$550 per foot

- 3 removed with State funds = \$49,500
- 4 removed with NOAA grant = \$78,000
- 54 Derelict Vessels removed by owners = \$730,000

ENHANCE ★ PROTECT ★ CONSERVE



ENHANCE ★ PROTECT ★ CONSERVE

Mississippi Advisory Commission on Marine Resources

September 16, 2024

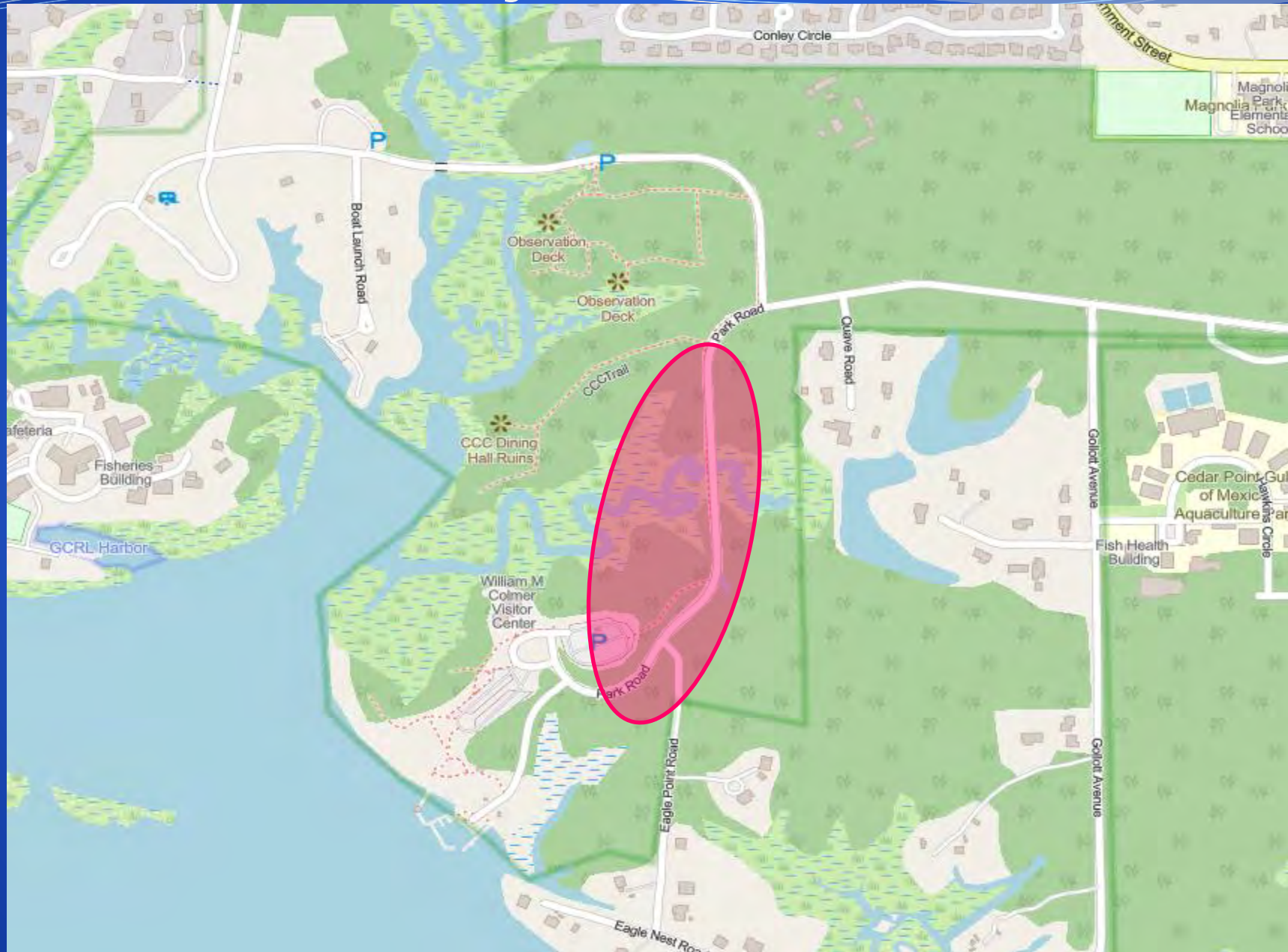
**Request for Consistency Certification by:
NPS: Gulf Islands National Seashore
DMR24-000168**

- **Location: Park Road in the Stark Bayou Area of Gulf Islands National Seashore in Ocean Springs, Jackson County**
- **Use District: (G) General Use District**
- **Agent: U.S. Federal Highway Administration**
- **Project Purpose/Need:**
 - **Enhance the public's use and/or enjoyment of natural resources by providing a safe place to walk and cycle within the Stark Bayou Area, helping to offset adverse impacts to recreational uses from DWH**

Project Description

- **Fill for construction of multi-use trails**
 - **Vegetated Coastal Wetlands: 0.07 acre (3,220 square feet)**
 - **Non-Tidal Wetlands: 0.23 acre (9,821 square feet)**
 - **Shoulder widening**
 - **Bike/pedestrian boardwalks**
 - **Placement of riprap**
 - **Installation of culverts**

Project Location



Project Area

**Non-tidal wetland fill - 0.23-acre
total impact**

**Vegetated Coastal Wetland
fill - 0.07-acre total impact**



Variance Requests

- **Title 22, Part 23 (MS Coastal Program):**
 - Chapter 8, Sect. 114.01 “Permanent filling of coastal wetlands below the mean high tide line because of potential adverse and cumulative environmental impacts is not authorized.”
 - Chapter 8, Sect. 114.03 "Sensitive coastal wetlands must not be filled.”
- **Justification:**
 - Chapter 8, Sect. 118.03 by stating that no feasible, alternative sites or construction techniques are available; there is a significant public benefit in the activity; and a public hearing has been held.

Mitigation for Impacts to Wetlands

- **Vegetated Coastal Wetlands**
 - Remove existing 24" culvert under Park Road and install 40' x 20' bottomless concrete culvert to improve natural flow to 4.95 acres of tidal marsh habitat
- **Non-tidal wetlands**
 - Appropriate number of mitigation credits will be purchased from a local mitigation bank



Public and Agency Notice and Comments

- **Public Notice**

- Notification of the proposed project appeared in The SunHerald on August 4, 2024
- Notification of the proposed project appeared on the MDMR website from August 1 to September 3, 2024
 - No public comments were received

- **Public Hearing**

- Held Tuesday, September 3, 2024
 - No public comments were received
- MDEQ: No comments received
- MDAH: No objections
- MS SOS: No objections

Staff Recommendation

- **The staff of the Department of Marine Resources has conducted a thorough evaluation of the project and has made findings on the decision factors in accordance with Title 22, Part 23 (Mississippi Coastal Program). The project would serve a higher public interest by:**
 - **Enhancing the public's use and/or enjoyment of natural resources by providing a safe place to walk and cycle within the Stark Bayou Area, helping to offset adverse impacts from DWH**
- **Therefore, staff requests a motion that the Commission recommend to the Executive Director:**
 - **Approve the requested Variances**
 - **Approve the Consistency Certification as requested**



ENHANCE ★ PROTECT ★ CONSERVE

Mississippi Advisory Commission on Marine Resources

September 16, 2024



ENHANCE ★ PROTECT ★ CONSERVE

Microbiological Sampling for Oyster Harvest

By Katherine Glover

ERNS II

Shellfish Bureau

K.1.

Oysters are filter feeders.

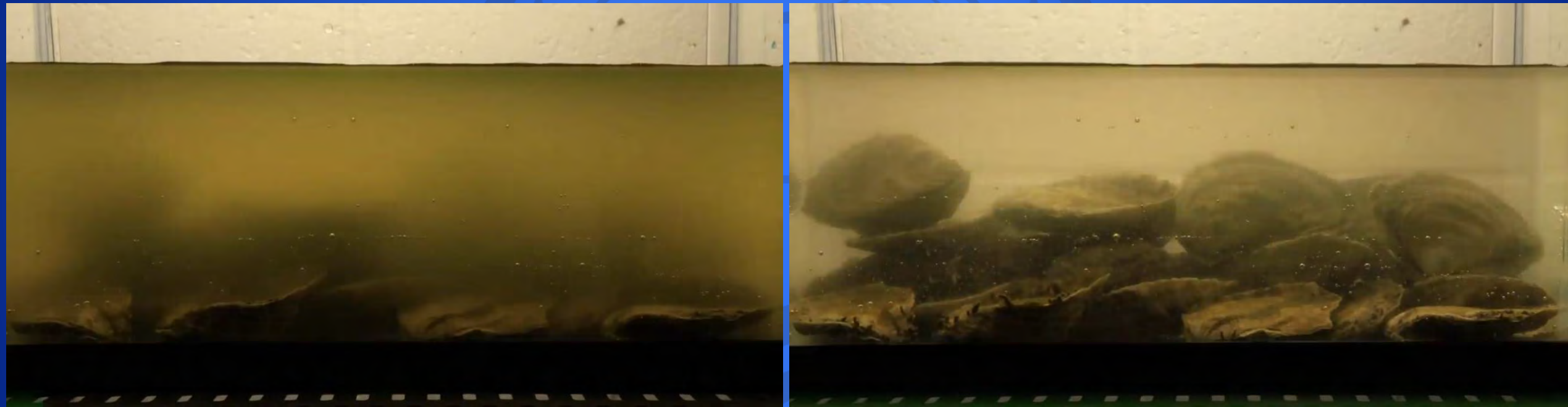
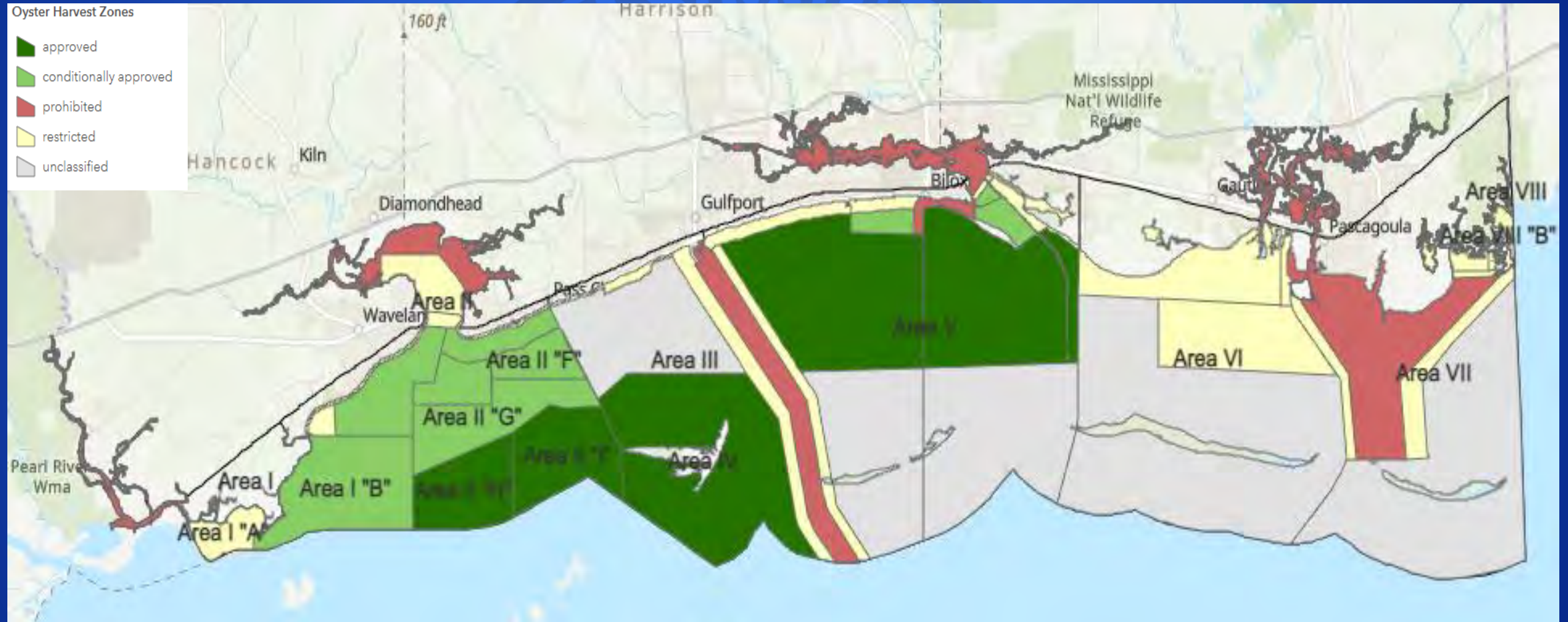


Image taken by the Marine Biological Laboratory in Woods Hole, MA

Public Health Safety

- Monitoring the microbiological water quality around oyster reefs mitigates risks to public health from consumption of raw or partially cooked contaminated shellfish.
- Per the 2019 NSSP Model Ordinance,
 - “The Authority (MDMR) shall assure that the number and location of sampling stations is adequate to effectively evaluate all pollution sources.”

89 Water Samples collected monthly in the MS Oyster Growing Areas



Water sample sites are located in between the oyster resource and potential pollution sources

Interpreting Lab Results



- Lab results determine if the area can open for active harvest as well as the overall classification of the growing waters
- If the results are not acceptable, the area will close until it is deemed safe.
- Database of lab results dates back to 2003





ENHANCE ★ PROTECT ★ CONSERVE

MDMR Microbiology Laboratory

By

Becky Hardgrove

Biological Program Coordinator

Microbiology Laboratory Director

Indicator Organism

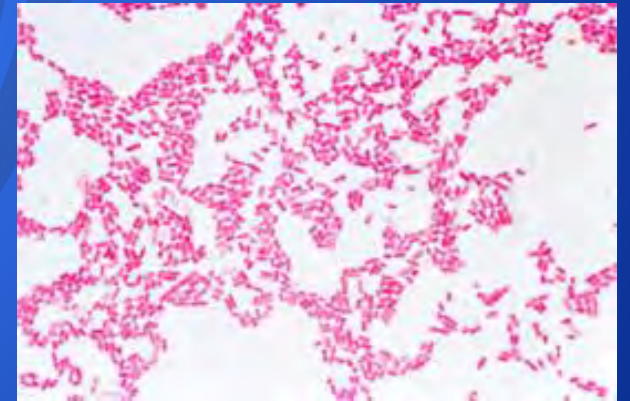
- What is an indicator organism?

Microorganisms such as bacteria and viruses in water bodies, which are utilized as a surrogate to evaluate the presence of pathogens in that environment.

Characteristics: nonpathogen, no minimal growth in water, and detectable at low concentrations.

- Fecal Coliform – *Escherichia coli*

- bacterium commonly found in the lower intestines of warm blooded animals
- Help indicate the presence of other disease-causing bacteria: typhoid, dysentery, hepatitis A, and cholera.



US Food and Drug Administration (FDA) Compliant

March 26, 2024

An FDA Laboratory Evaluation Officer certified the MDMR Microbiology Laboratory for the following tests:

- Multiple Tube Fermentation Technique for seawater using mA-1.
- APHA Decimal Dilution Multiple Tube Fermentation Technique with Standard Plate Count for shellfish meats.

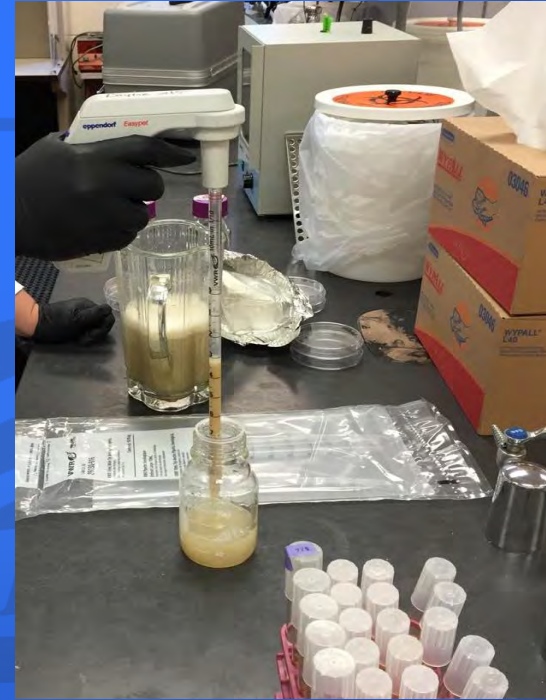
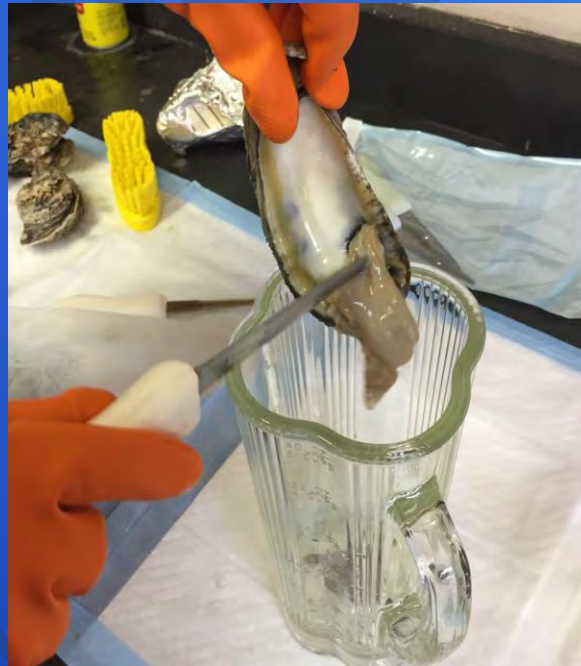
Fecal Coliform Water Sample Testing

- Fecal Coliform determination in Shellfish Water Samples by Multiple Tube Fermentation
- Guidelines and Regulations – ISSC, FDA, and NSSP
- Fecal Coliforms will ferment sugar at 44.5C and produce gas.



Fecal Coliform Oyster Meat Sample Testing

- Fecal Coliform Determination in Shellfish Tissue using Multiple Tube Fermentation
- Total Bacteria Aerobic Standard Plate Count Method for Shellfish Tissue.
- Guidelines and Regulations – ISSC, FDA, and NSSP

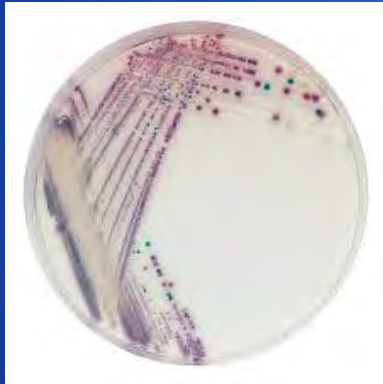


Standard Plate Count Testing



Future...

- Potable Water Testing for Seafood Processors
- *Vibrio* spp. Testing
- Wet Storage Testing





Questions?

ENHANCE ★ PROTECT ★ CONSERVE



ENHANCE ★ PROTECT ★ CONSERVE

Mississippi Advisory Commission on Marine Resources

September 16, 2024



ENHANCE ★ PROTECT ★ CONSERVE

Grand Bay NERR

Let's Celebrate National Estuaries Day!

National Estuaries Day 2024!

Join us for
*Seaside with a
Scientist*

Meet Water Quality
Scientists, Ornithologists,
and Restoration
Ecologists as you tour the
waters of the reserve.

Saturday, September 30, 2024

Boat Rides 8:00 am to 12:00 pm
Building Open 8:30 am to 2:00 pm

<https://grandbaynerr.org/event/ned2024/>



National Estuaries Day 2024!



Meet our partners, lots of activities at the building, take a walk on our boardwalk trail!

ENHANCE ★ PROTECT ★ CONSERVE



ENHANCE ★ PROTECT ★ CONSERVE

Mississippi Advisory Commission on Marine Resources

September 16, 2024