



ENHANCE ★ PROTECT ★ CONSERVE

# Mississippi Advisory Commission on Marine Resources

October 22, 2024



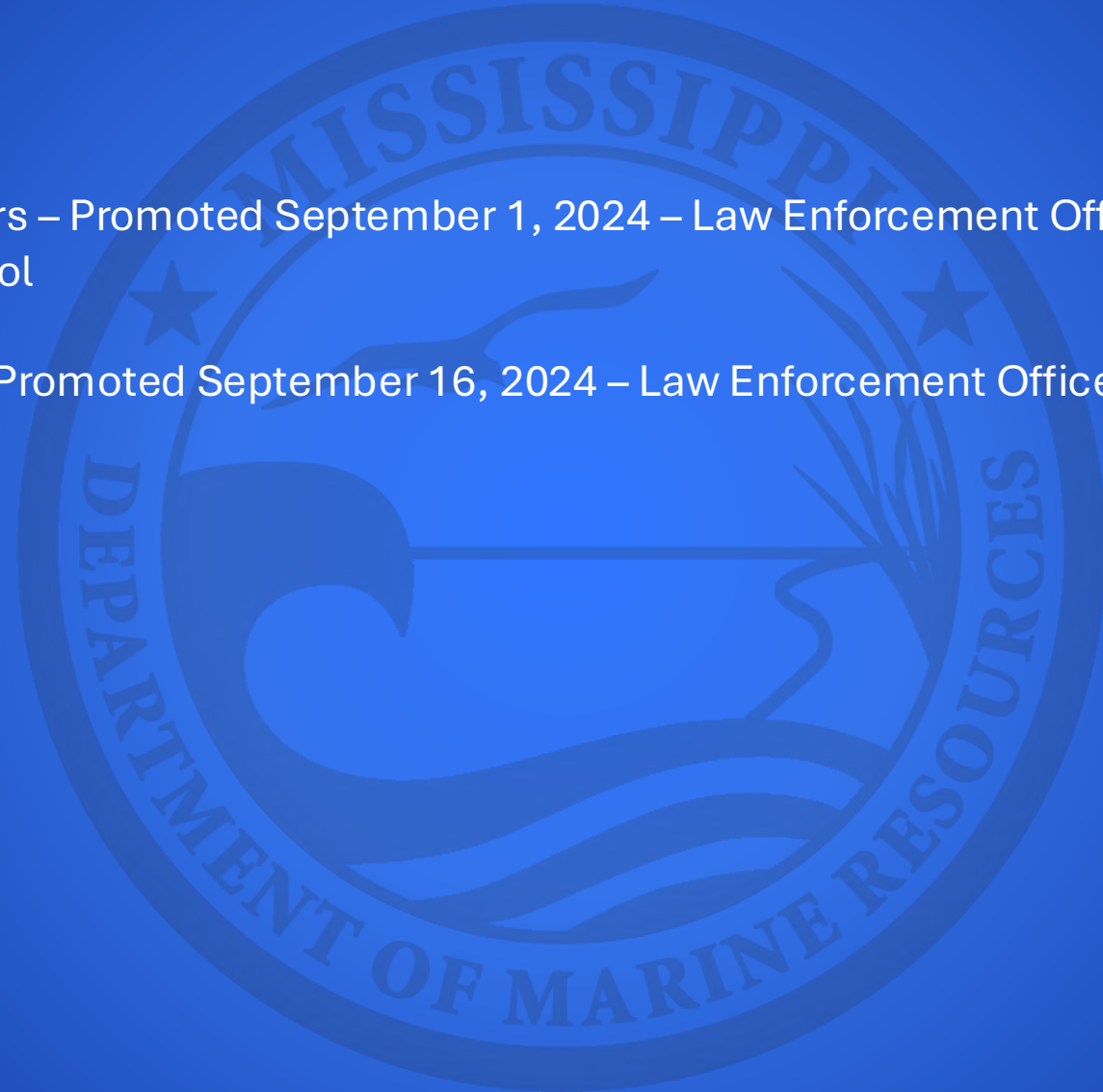
ENHANCE ★ PROTECT ★ CONSERVE

# Employment, Contracts and Procurement Updates October 22, 2024

# Employment Updates

## Promotions:

- Thomas Rogers – Promoted September 1, 2024 – Law Enforcement Officer II, Corporal - Office of Marine Patrol
- Tyler Foster – Promoted September 16, 2024 – Law Enforcement Officer, II, Sergeant – Office of Marine Patrol



ENHANCE ★ PROTECT ★ CONSERVE



ENHANCE ★ PROTECT ★ CONSERVE

# Mississippi Advisory Commission on Marine Resources

October 22, 2024





ENHANCE ★ PROTECT ★ CONSERVE

# Actions Update for October 22, 2024 Commission Meeting

Discussed at the September 2024 meeting:

The Commission recommended and the Director approved the following motions:

- Motions to recommend that the Executive Director approve the Title 22, Part 23 variances and the consistency certification as requested by the NPS Gulf Islands National Seashore for the permanent filling of coastal wetlands below the mean high tide line for road widening, construction of bike/pedestrian pathway and other improvements along Park Road in the Stark Bayou area of Gulf Islands National Seashore in Ocean Springs, MS.



ENHANCE ★ PROTECT ★ CONSERVE

# Mississippi Advisory Commission on Marine Resources

October 22, 2024



ENHANCE ★ PROTECT ★ CONSERVE

# Mississippi Department of Marine Resources

Agency Financial Results  
as of September 30, 2024



Key Metrics:

- State Revenue of \$3.6M
- Agency Revenue of \$5.3M
- State Net Income of \$2M
- Agency Net Income of (\$1.8M)

**MISSISSIPPI DEPARTMENT OF MARINE RESOURCES**  
**Income Statement - Fiscal Year 2025**  
**As of September 30, 2024**

	<b>Federal :</b>				
	<b>GOMESA</b>				
			<b>PHII:</b>		
			<b>NFWF:</b>		
	<u>State</u>	<u>Non-Federal:</u>	<u>Operating Subtotal</u>	<u>Tidelands</u>	<u>Total DMR</u>
<b>Revenue:</b>					
Off-road Fuel Tax	3,050,000	-	3,050,000	-	3,050,000
Federal/NonFederal Grants	-	1,345,144	1,345,144	-	1,345,144
Sales Revenue	311,062	-	311,062	137	311,199
Indirect Cost Recovery	215,197	-	215,197	-	215,197
Other Revenue	90,740	128,167	218,906	225,133	444,039
<b>Current Budget Year Revenue:</b>	<b>3,666,998</b>	<b>1,473,311</b>	<b>5,140,309</b>	<b>225,270</b>	<b>5,365,579</b>
<b>Expenditures:</b>					
Salaries, Wages, Fringe	1,330,145	900,395	2,230,541	263,263	2,493,804
Travel	5,039	20,006	25,045	14,234	39,279
Contractual Services	247,947	721,664	969,611	106,297	1,075,908
Commodities	66,767	655,298	722,065	59,526	781,591
Equipment	6,086	82,641	88,727	40,651	129,378
Subsidies, Loans, and Grants	187	2,465,643	2,465,830	264,074	2,729,905
<b>Current Budget Year Expenditures:</b>	<b>1,656,173</b>	<b>4,845,647</b>	<b>6,501,819</b>	<b>748,045</b>	<b>7,249,865</b>
<b>Current Budget Year Net Income/(Loss):</b>	<b>\$ 2,010,826</b>	<b>\$ (3,372,336)</b>	<b>\$ (1,361,510)</b>	<b>\$ (522,775)</b>	<b>\$ (1,884,285)</b>

# Financial Budget Comparison

- After three months of Fiscal Year 2025:

**MISSISSIPPI DEPARTMENT OF MARINE RESOURCES**  
**2025 Budget Comparison**  
**As of September 30, 2024**

	<i>Actual Year to Date Expenditures</i>			<i>Budget Year Totals</i>			<i>Percent Remaining</i>		
	<b>Operating</b>	<b>Tidelands</b>	<b>Total</b>	<b>Operating</b>	<b>Tidelands</b>	<b>Total</b>	<b>Operating</b>	<b>Tidelands</b>	<b>Total</b>
<b>Expenditures:</b>									
Salaries, Wages, Fringe	\$ 2,230,541	\$ 263,263	\$ 2,493,804	\$ 12,740,312	\$ 1,511,991	\$ 14,252,303	82.5%	82.6%	82.5%
Travel	25,045	14,234	39,279	140,314	45,000	185,314	82.2%	68.4%	78.8%
Contractual Services	969,611	106,297	1,075,908	7,634,081	1,651,000	9,285,081	87.3%	93.6%	88.4%
Commodities	722,065	59,526	781,591	6,035,425	360,000	6,395,425	88.0%	83.5%	87.8%
Other than Equipment	-	-	-	5,000	100,000	105,000	100.0%	100.0%	100.0%
Equipment	88,727	40,651	129,378	600,000	223,000	823,000	85.2%	81.8%	84.3%
Vehicles	-	-	-	200,000	216,000	416,000	100.0%	100.0%	100.0%
Wireless Devices	-	-	-	6,250	-	6,250	100.0%	-	100.0%
Subsidies, Loans, and Grants	2,465,830	264,074	2,729,905	233,023,762	7,593,009	240,616,771	98.9%	96.5%	98.9%
<b>Total Expenditures:</b>	<b>\$ 6,501,819</b>	<b>\$ 748,045</b>	<b>\$ 7,249,865</b>	<b>\$ 260,385,144</b>	<b>\$ 11,700,000</b>	<b>\$ 272,085,144</b>	<b>97.5%</b>	<b>93.6%</b>	<b>97.3%</b>

- Operating Funds have 97.5% of Budget remaining
- Tidelands Trust Fund has 93.6% of Budget remaining



ENHANCE ★ PROTECT ★ CONSERVE

# Mississippi Advisory Commission on Marine Resources

October 22, 2024



MISSISSIPPI



GULF \* FRESH  
MISSISSIPPI  
SEAFOOD  
★ AMERICA'S SEAFOOD ★





**GULF★FRESH**  
**MISSISSIPPI**  
**SEAFOOD**

★ AMERICA'S SEAFOOD ★







ENHANCE ★ PROTECT ★ CONSERVE

# Mississippi Advisory Commission on Marine Resources

October 22, 2024



ENHANCE ★ PROTECT ★ CONSERVE

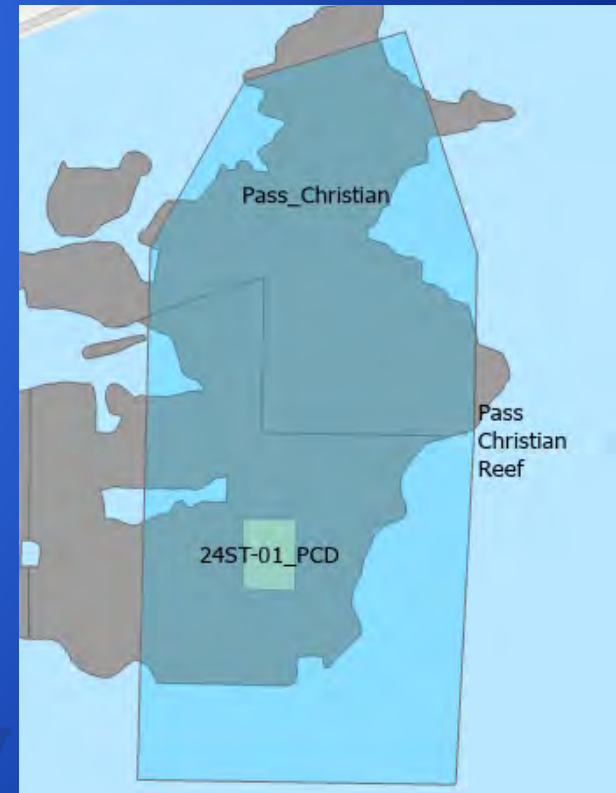
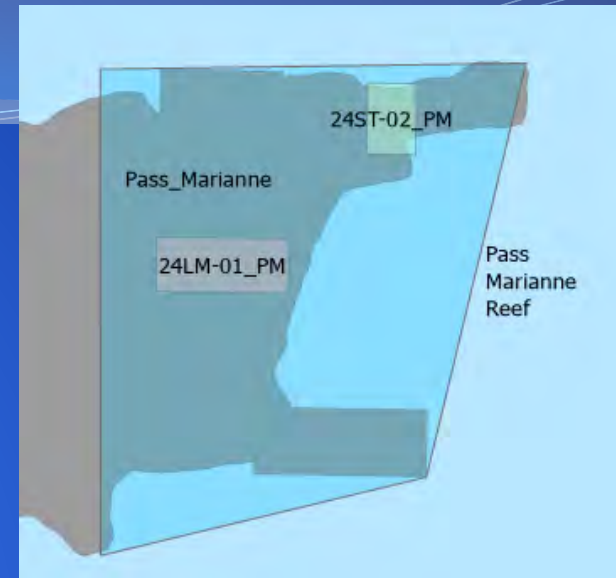
# Shellfish Bureau Update

Jason Rider  
Shellfish Bureau Director

K.1.

# Program Updates: Cultch Planting

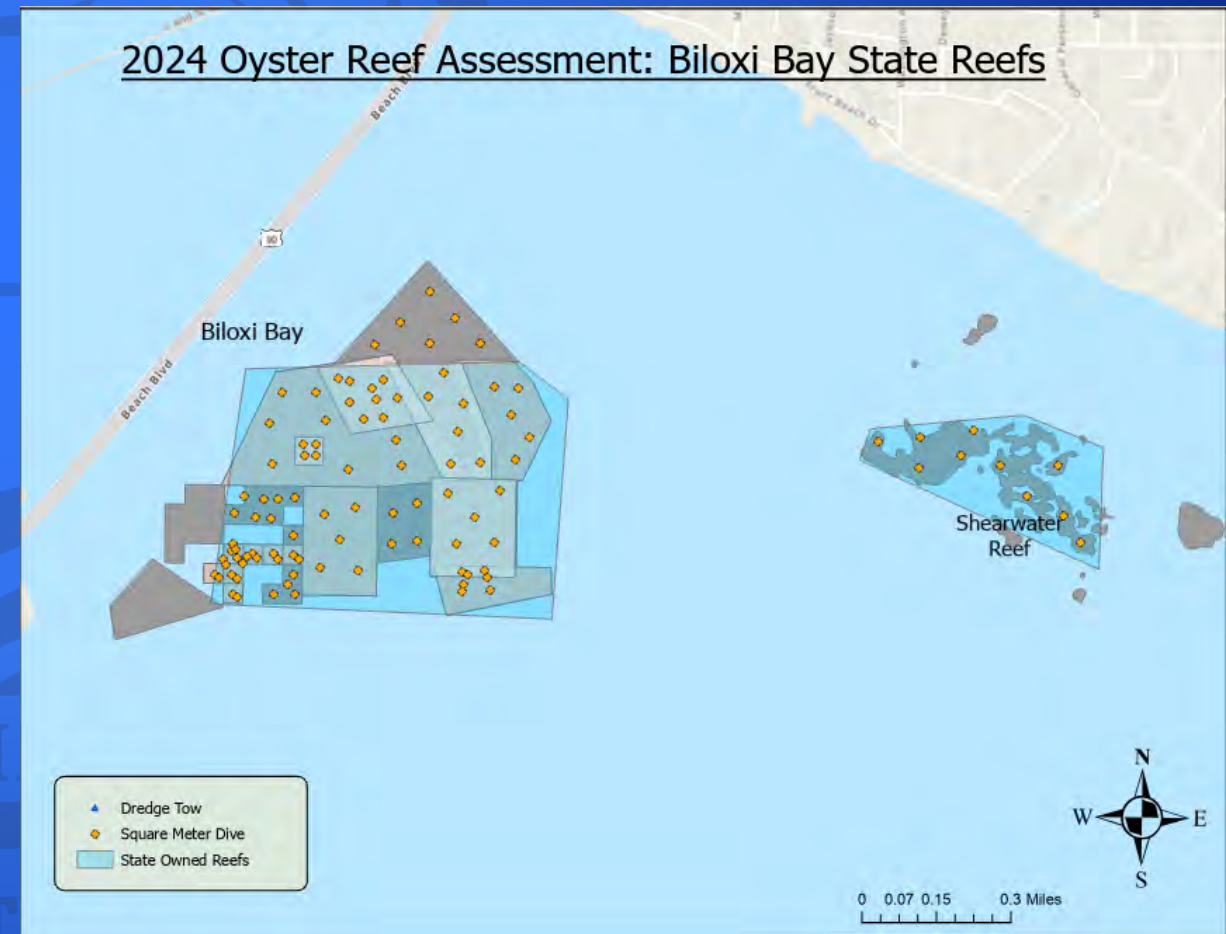
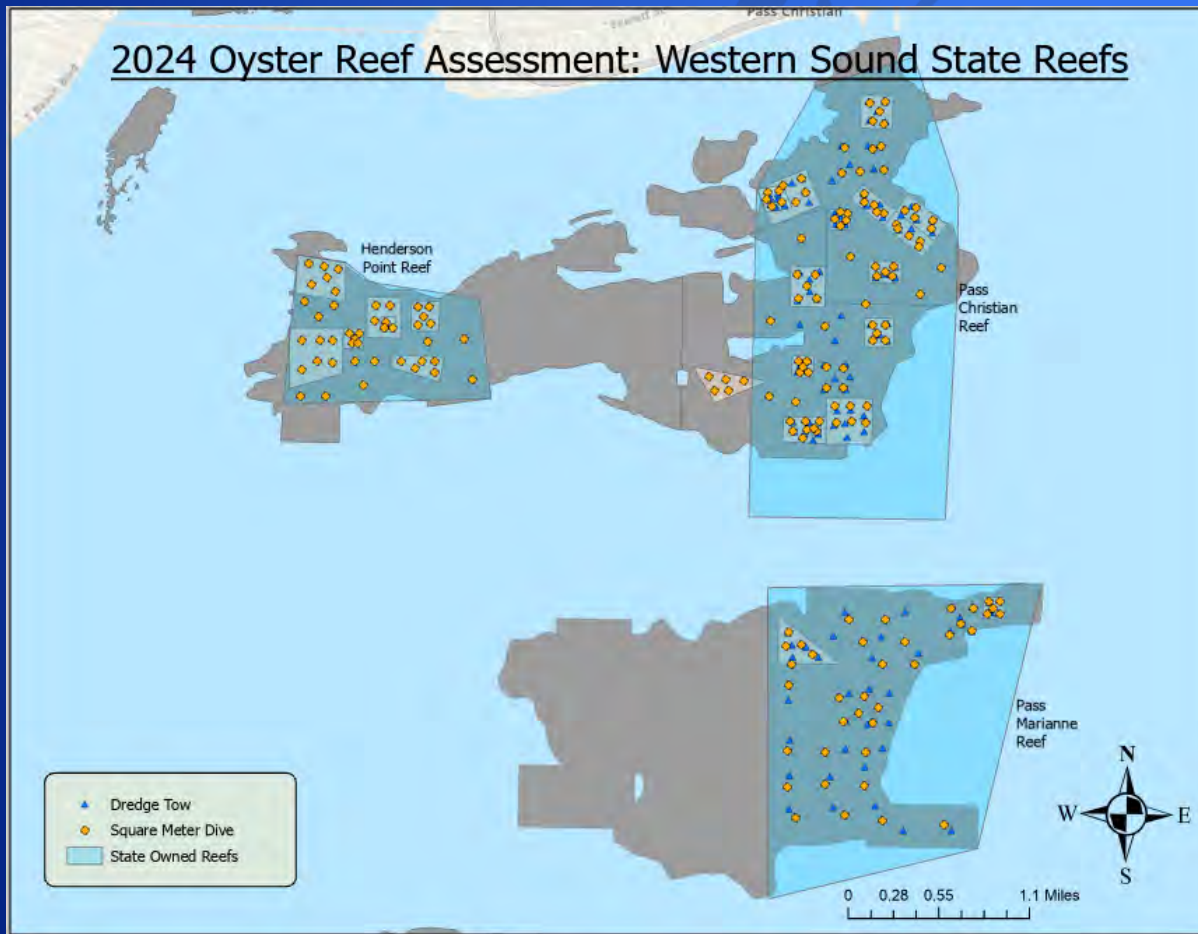
- MDMR deployed 18,000 cubic yards of limestone over two State-Owned Reefs in June of 2024
  - Pass Christian State Reef
    - 34 Acres, 3,424 Cubic Yards
  - Pass Marianne State Reef
    - 34 Acres, 4,395 Cubic Yards
    - 70 Acres, 10,400 Cubic Yards
- Initial Sampling Results – September 2024
  - Based off initial 3 month Spat Tile Deployment Data, MDMR has recording an initial spat set.
  - Water quality has been consistent, and we anticipate moderate to average recruitment.





# Program Updates: Stock Assessment

- Completed 120 one-minute dredge tows
- Completed 288 square meter samples site with 576 total samples



# 2024 Limited Oyster Season

- **Season Dates**

- 10 days November 13<sup>th</sup> – 26<sup>th</sup>
- 10 Days December 09<sup>th</sup> – 20<sup>th</sup>

- **Location**

- Western Reefs
- All Permitted Areas in the Western MS Sound

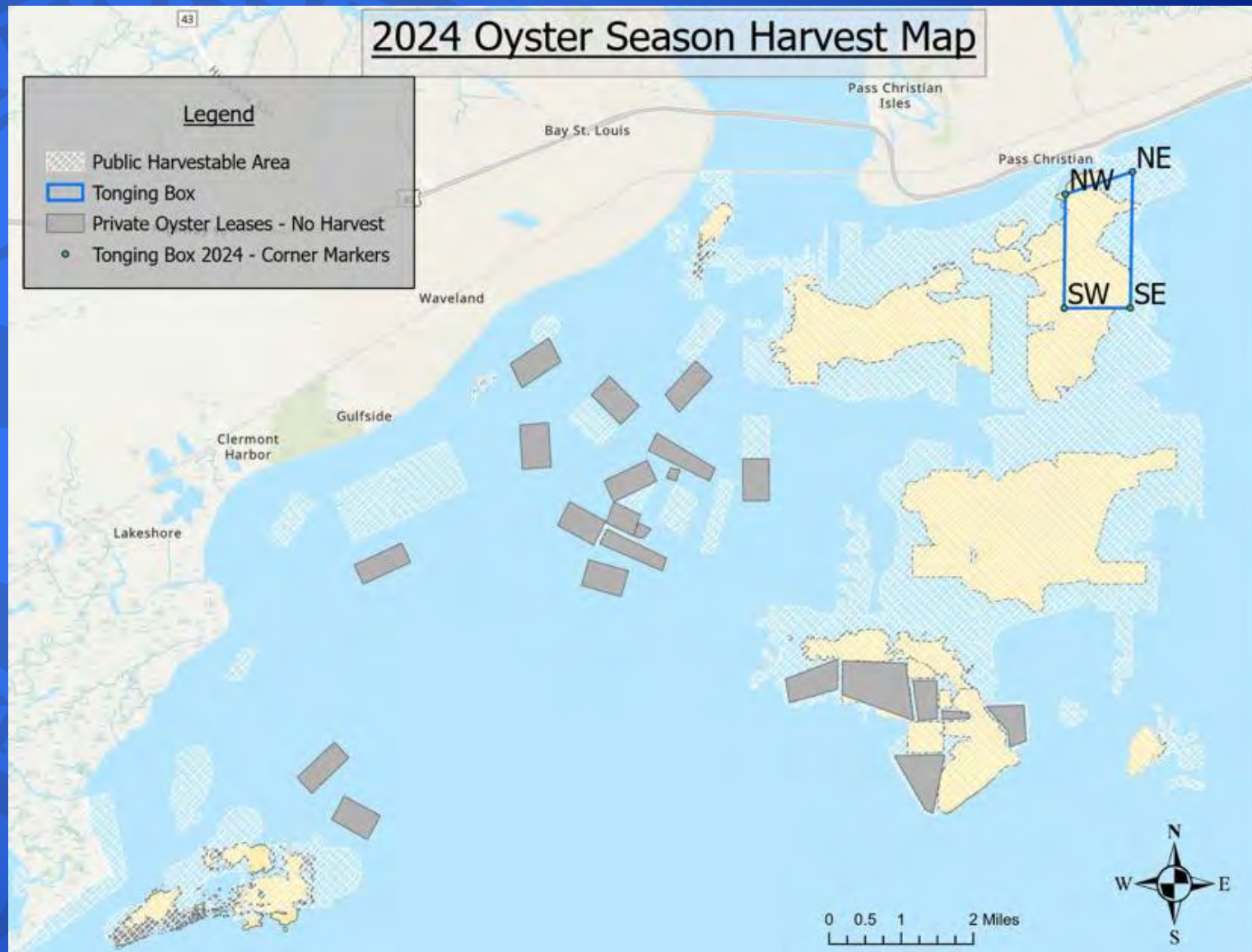
- **Gear Type**

- Tongs
- Dredges

- **Daily Harvest Quota:**

- 10 sacks per boat/per day

November							December						
Su	Mo	Tu	We	Th	Fr	Sa	Su	Mo	Tu	We	Th	Fr	Sa
					1	2	1	2	3	4	5	6	7
3	4	5	6	7	8	9	8	9	10	11	12	13	14
10	11	12	13	14	15	16	15	16	17	18	19	20	21
17	18	19	20	21	22	23	22	23	24	25	26	27	28
24	25	26	27	28	29	30	29	30	31				





# 2024 Limited Oyster Season

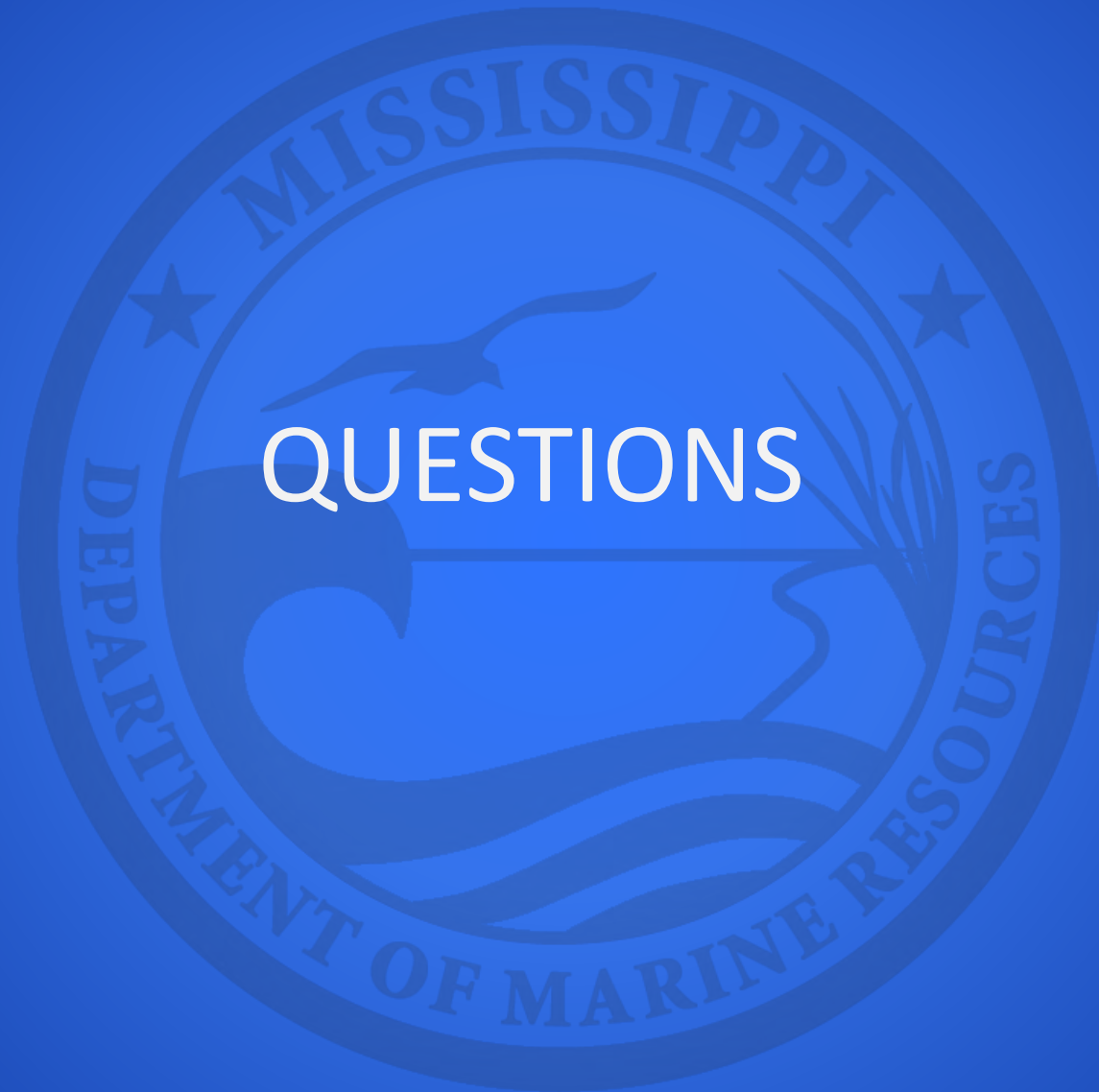
- All oyster harvester will be required to follow Title 22 Part 1 Regulations.
- Licenses
  - All oyster harvesters are required to attend an oyster harvester training class before they can apply for a harvester's license. The seminar will cover basic oyster handling, hygiene, and regulations involving harvesting practices.
    - MDMR will host oyster harvester training classes on:
      - Wednesday, October 30, 2024
      - Monday, November 4, 2024
      - Classes will be hosted in person every hour, from 9:00 am - 4:00 pm
    - Friday, November 8, 2024
      - In person and virtually
- Check Stations
  - MDMR will have oyster check stations in Pass Christian and Bayou Caddy
    - All tags will be sold at these locations
    - All harvester will be required to check in and out at these locations

ENHANCE ★ PROTECT ★ CONSERVE

# Staff Recommendation

- Staff recommends to the Executive Director that the agency open Area II “A”, Area I “B”, Area II “B”, Area II “E”, Area II “F”, Area II “G”, Area II “H” and Area II “I” in the Western MS Sound for a limited oyster season. The season will be open on November 13th for a period not to exceed 10 days and again on December 9th for a period not to exceed 10 days. The daily sack limit will be set at 10 sacks per day/per vessel.
- All approved methods of harvesting, along with designated harvest areas, will be detailed in the official opening order issued by the MDMR.





# QUESTIONS

ENHANCE ★ PROTECT ★ CONSERVE

# Grand Bay Land Acquisition and Habitat Management Project

- Restore pine savanna and pine flatwoods habitats
- Increase the diversity and abundance of native pine savanna and flatwoods vegetation
- Increase habitat for wintering grassland birds





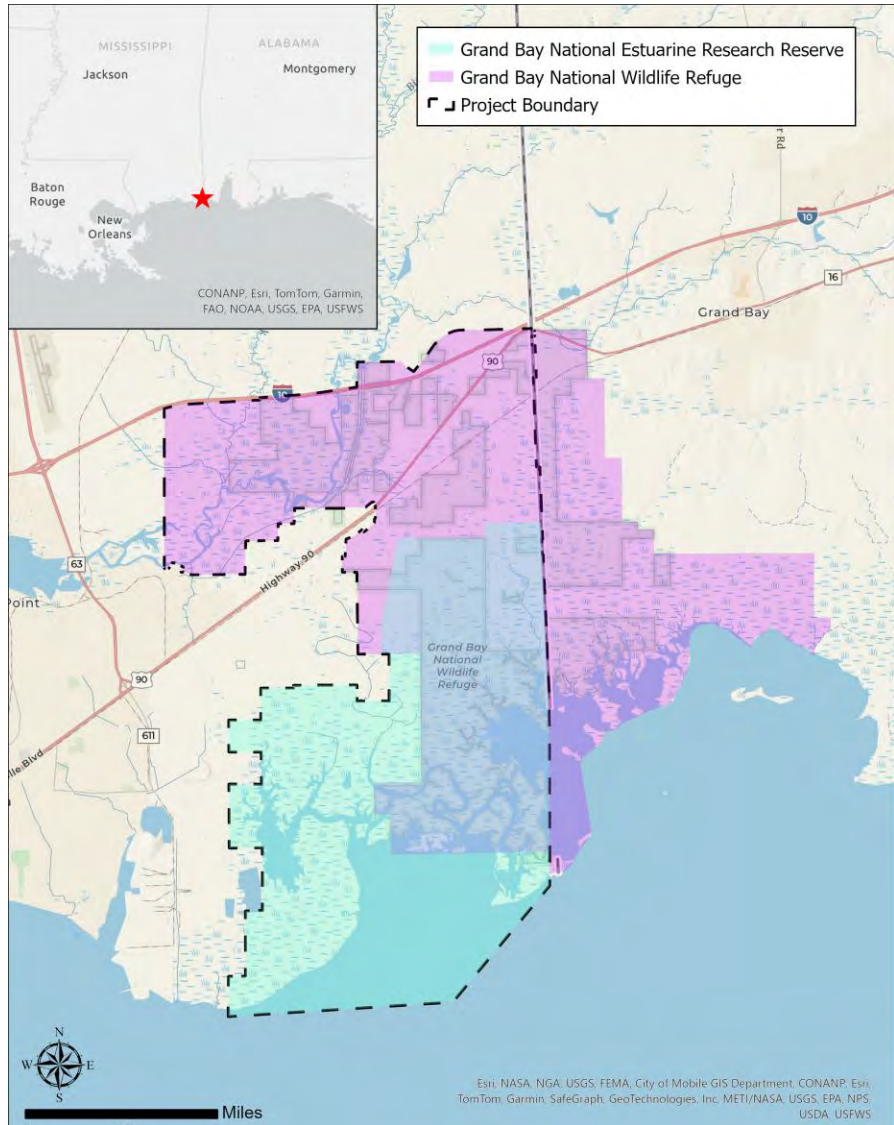
Prior to European discovery, the southeastern U.S. contained over 30 million hectares of longleaf pine-grassland....only 1.2 million hectares remain.

-Van Lear et al., 2005





# Grand Bay Land Acquisition and Habitat Management Project



- ~30,000-acre project area
- Grand Bay National Estuarine Research Reserve
- Grand Bay National Wildlife Refuge
- Part of the larger Grand Bay Savanna Complex (44,000 acres)



# Land Acquisition

> 1,600 acres acquired



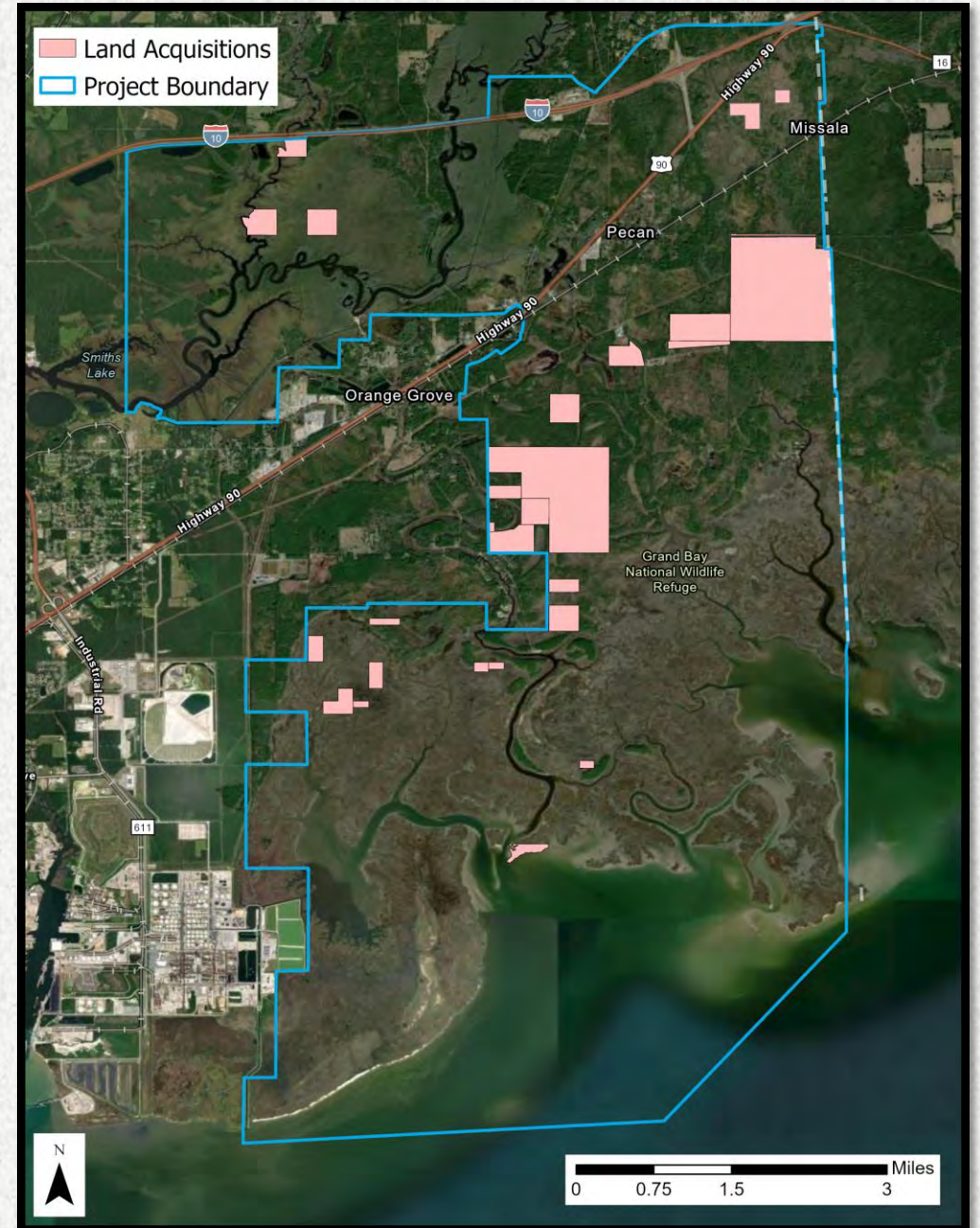
longleaf pine  
(*Pinus palustris*)



white topped pitcher plant  
(*Sarracenia leucophylla*)

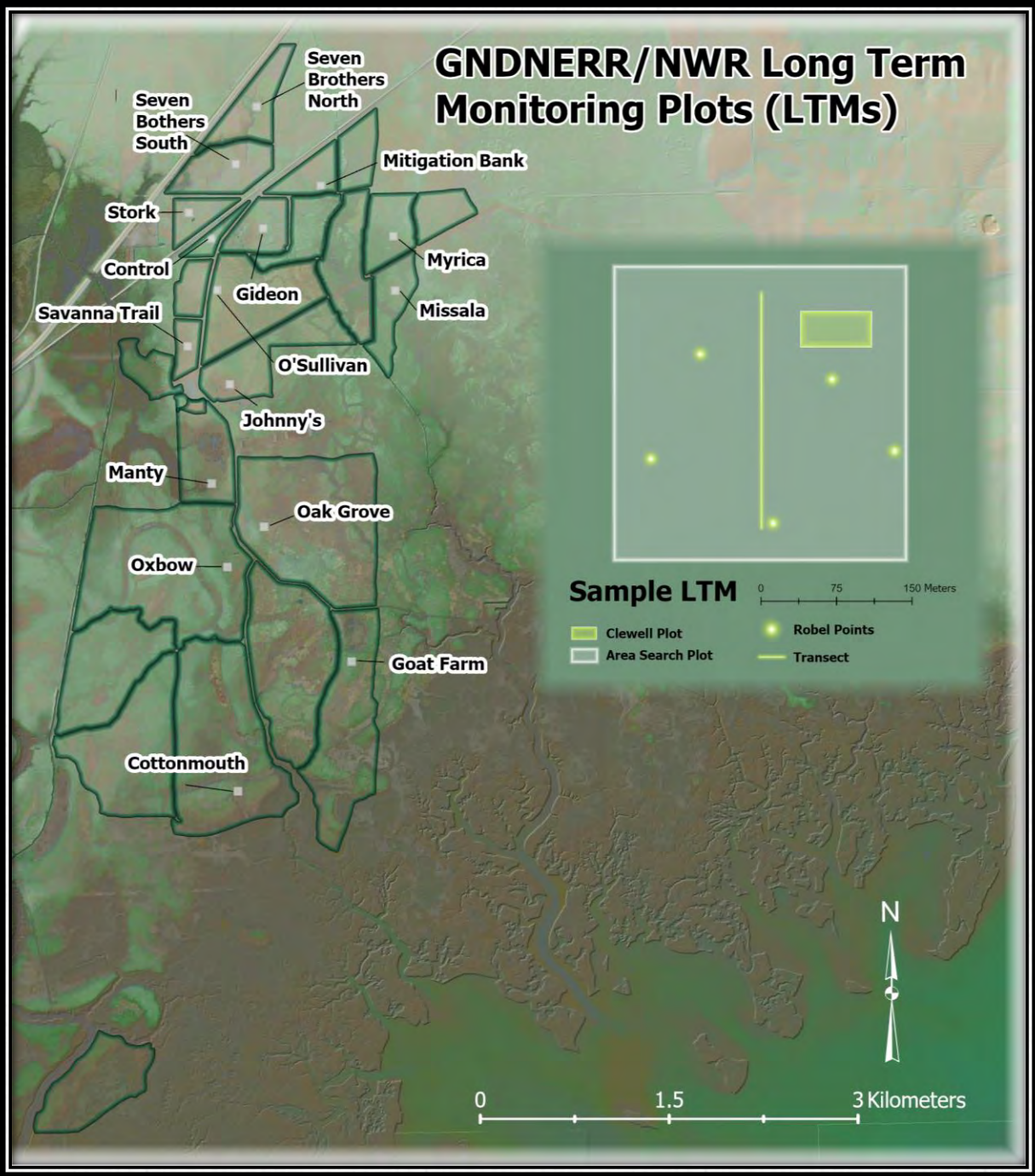


small coastal plain spreading pogonia  
(*Cleistesiospis oricamporum*)





# GNDNERR/NWR Long Term Monitoring Plots (LTMs)



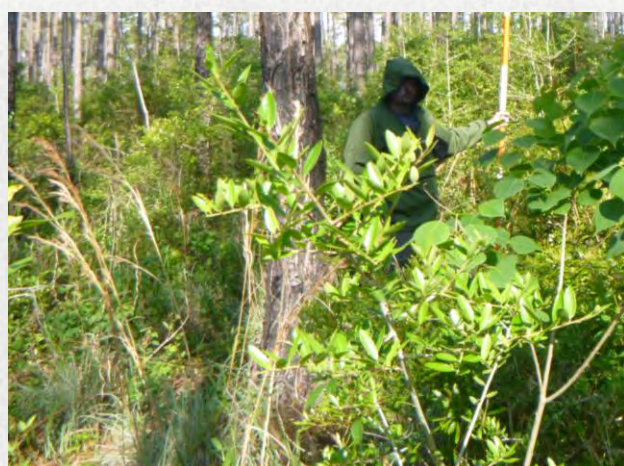




**Mastication/Mulching**  
>300 acres since 2018  
~900 acres planned for 2025



**Herbicide treatment**  
>2,000 acres since 2018



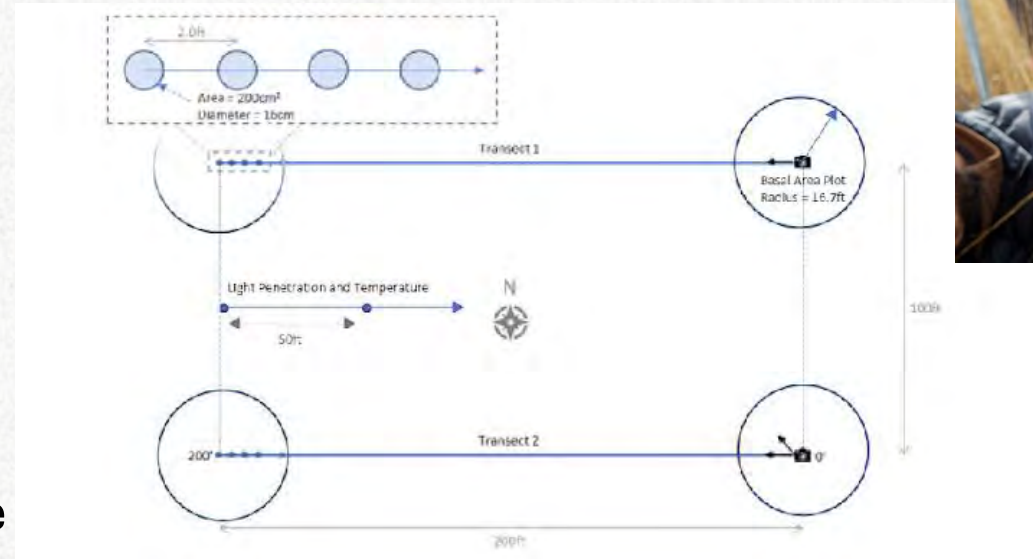
**Prescribed fire**  
~ 3,000 acres since 2018



# Monitoring

- Vegetation
  - Clewell plots (Clewell, 1998)
- Birds
  - Area Search (Kolb, 1965)
- Invasive Species
  - Periodic pre/post mapping of coverage

**No land management in recent decades  
(Poor habitat quality)**



**Well managed  
(Excellent habitat quality)**









1 Year Before Burn



# Goat Farm Management Unit

1 Week After Burn



13 Weeks After Burn



65 Weeks After Burn





# Grand Bay NERR Herbarium

## Collection Statistics

- 855 specimen records
- 840 (98%) georeferenced
- 852 (100%) with images (1,640 total images)
- 847 (99%) identified to species
- 120 families
- 312 genera
- 567 species
- 595 total taxa (including subsp. and var.)



**SERNEC**  
Southeast Regional Network of Expertise and Collections

Home Specimen Search Images Inventories Dynamic Tools [Log In](#) [New Account](#) [Contact Us](#)

### Welcome to the SERNEC data portal

SERNEC (SouthEast Regional Network of Expertise and Collections) is a consortium of 233 herbaria in 14 states in the southeastern USA. Our aim is to provide herbarium specimen images and metadata from one of the most botanically diverse regions of the earth with the goal of facilitating research, management planning and a well-informed public. These data span 200 years of botanical information housed in herbaria in the Southeast and are vital to studies in biodiversity, evolution, ecology and systematics to name a few. We are also working to link our efforts with those of other regional herbarium groups and with the National Resource for Advancing Digitization of Biodiversity Collections, iDigBio. This site is brought to you in collaboration with the SEInet Network. Please send questions or comments to the portal manager.

**Interested in getting more involved?**  
SERNEC has many onsite and remote volunteer opportunities. We are continually running expeditions on the Notes from Nature platform and can always use help with our georeferencing activities. We also encourage you to make use of our lesson plans and activities.

SERNEC is currently funded by the National Science Foundation as a Thematic Collections Network with the goal of digitizing an additional 4 million specimens from the southeast United States. As part of this effort we are partnering with CyVerse for image archiving and access.

Need data? How can we help? Please contact the PI to see if we can better accommodate your research needs.

### Search Collections

[General Data Usage Policy](#)

**Plant of the Day**

What is this plant?  
[Click here to test your knowledge](#)

This project made possible by National Science Foundation Award 1410069  
Powered by Symbiota



# Avian Monitoring

Mississippi Sandhill Cranes  
(*Grus canadensis pulla*)



Swamp Sparrow  
(*Melospiza georgiana*)



Photo © Alan Murphy Photography

162 total detected in 2019  
551 detected in 2024



Henslow's Sparrow  
(*Ammodramus henslowii*)



6 total detected in 2019  
23 detected in 2024









ENHANCE ★ PROTECT ★ CONSERVE

# Mississippi Advisory Commission on Marine Resources

October 22, 2024