



ENHANCE ★ PROTECT ★ CONSERVE

Mississippi Advisory Commission on Marine Resources

November 19, 2024



ENHANCE ★ PROTECT ★ CONSERVE

Employment, Contracts and Procurement Updates November 19, 2024

Employment Updates

Promotions:

- Emmett Carstens – Promoted October 1, 2024 – Environmental/Natural Resources Specialist, III – Grand Bay NERR

New Hires:

- Dena Thomas – Started October 16, 2024 – Dispatcher II – Office of Marine Patrol
- Jason Mauffray – Started October 28, 2024 – Accountant III – Office Finance and Accounting

Contracts and Procurements for November 2024

<u>Service Contracts</u>					
<u>Vendor</u>	<u>Procurement Method</u>	<u>Amount</u>	<u>Term</u>	<u>Funding Source</u>	<u>Commodity/Service Description</u>
USM	Institute of Higher Learning	2,500,000.00	5 years	Various	Master contract for various activities



ENHANCE ★ PROTECT ★ CONSERVE

Mississippi Advisory Commission on Marine Resources

November 19, 2024



ENHANCE ★ PROTECT ★ CONSERVE

Actions Update for November 19, 2024 Commission Meeting

Discussed at the October 2024 meeting:

The Commission recommended and the Director approved the following motion:

- That the agency open Area II “A”, Area I “B”, Area II “B”, Area II “E”, Area II “F”, Area II “G”, Area II “H” and Area II “I” in the Western MS Sound for a limited oyster season;
 - the season will be open on November 13th for a period not to exceed 10 days and again on December 9th for a period not to exceed 10 days;
 - the daily sack limit will be set at 10 sacks per day/per vessel; and
 - all approved methods of harvesting, along with designated harvest areas, will be detailed in the official opening order issued by the MDMR.



ENHANCE ★ PROTECT ★ CONSERVE

Mississippi Advisory Commission on Marine Resources

November 19, 2024

**Request for Permit by:
Mississippi Department Environmental Quality
DMR24-000341**

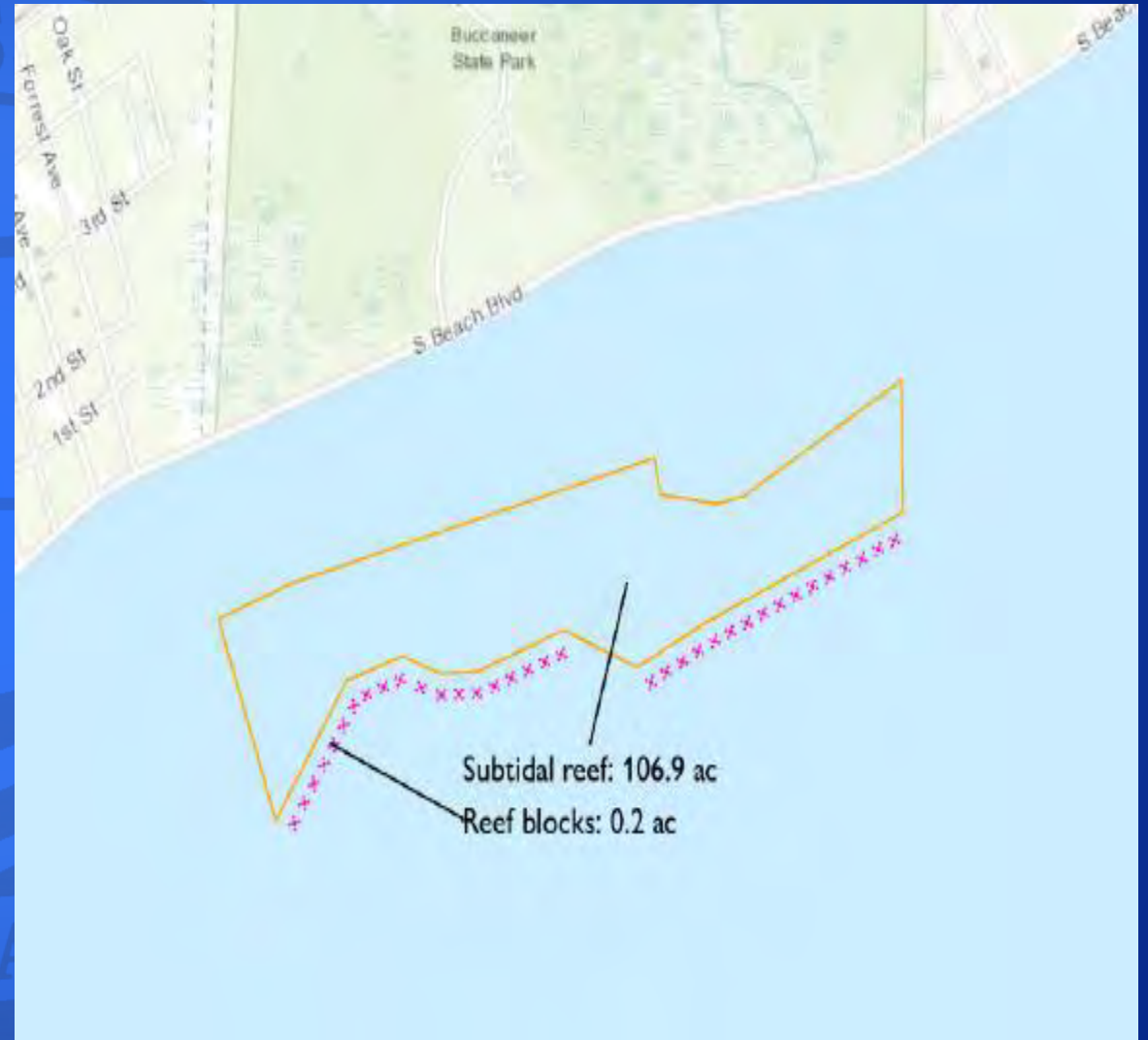
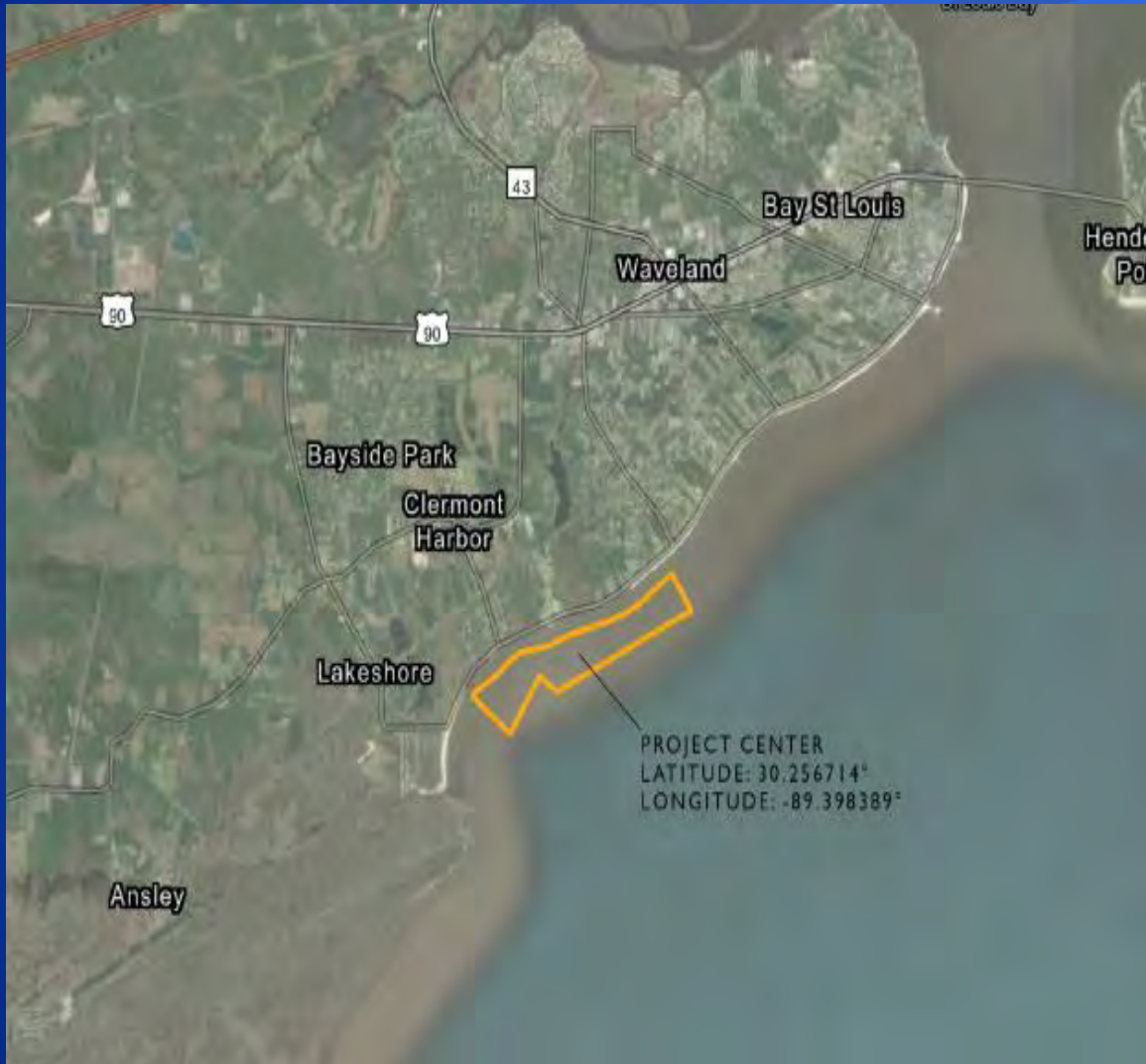
- **Location:** Near Buccaneer State Park near Waveland and Lakeshore communities, on MS Sound, Hancock County
- **Use District:** (G) General Use District
- **Agent:** Neel-Schaffer, Inc
- **Project Purpose/Need:** Remedy harm to Gulf Coast resources caused by the Deepwater Horizon oil spill by creating subtidal reef habitat to enhance secondary productivity and improve recreational fishing opportunities

ENHANCE ★ PROTECT ★ CONSERVE

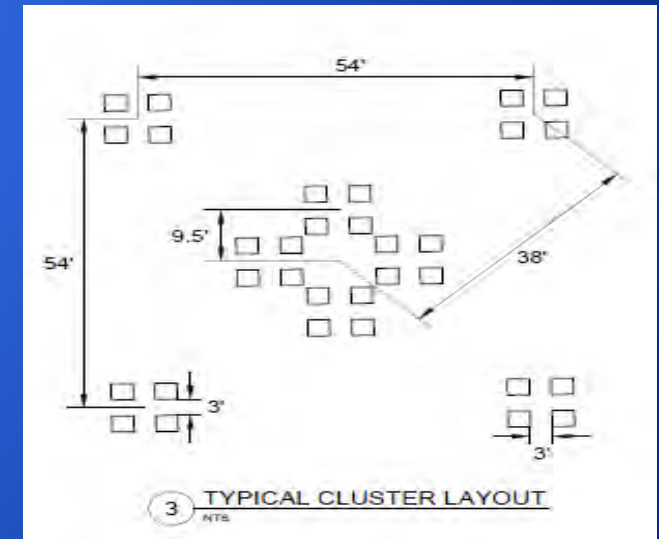
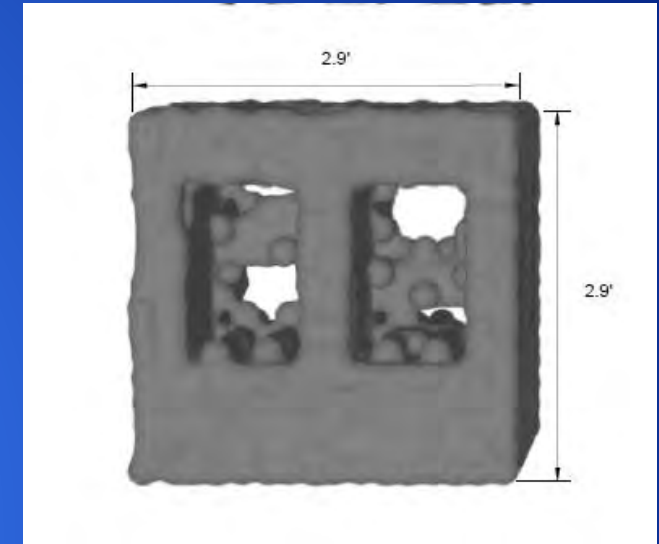
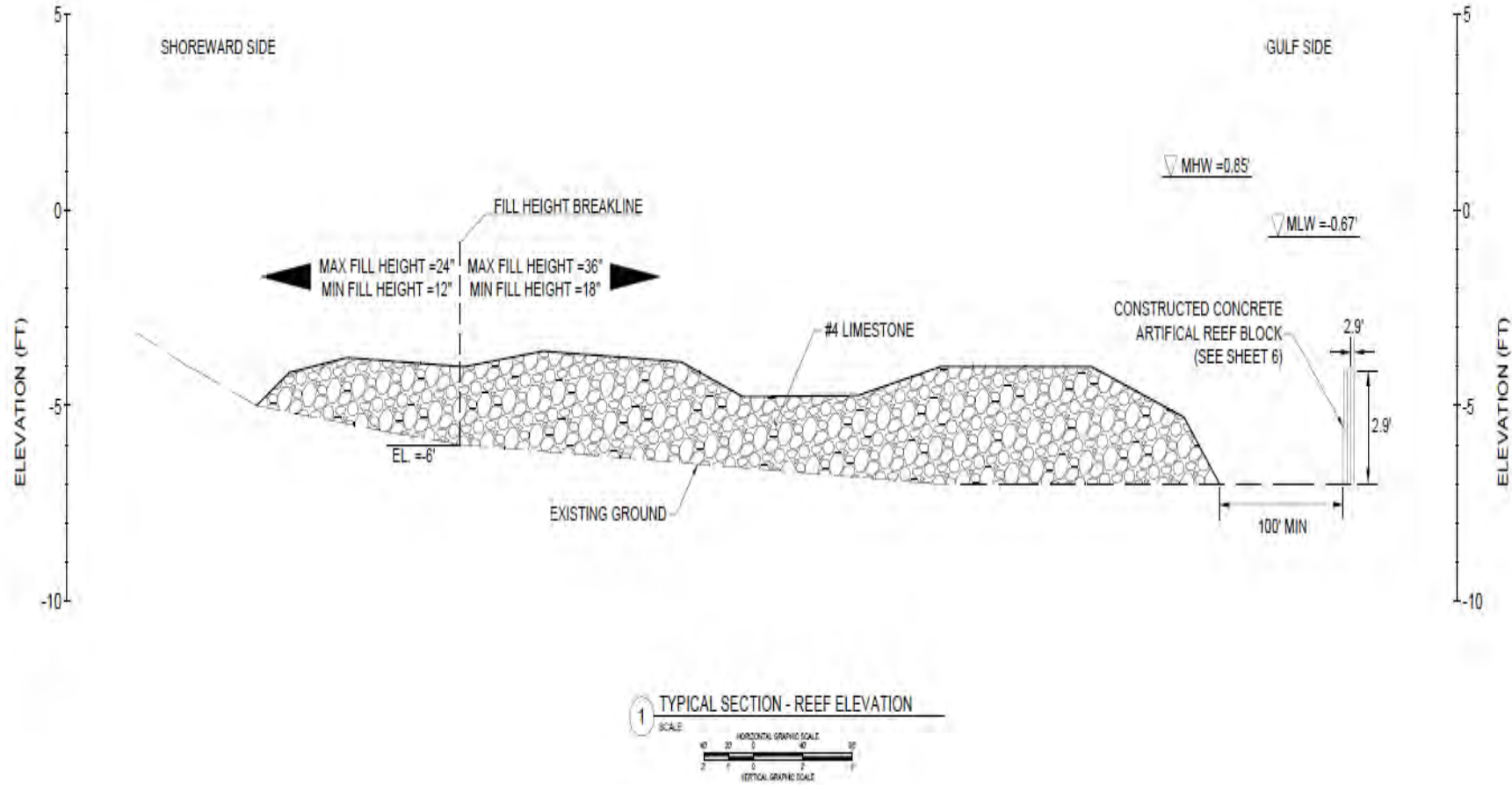
Project Description

- **Filling of Coastal Wetlands for the Construction of a Submerged Artificial Reef**
 - **Shoreward subtidal reef**
 - **106.9 acres of limestone cultch material**
 - **Maximum 473,000 cubic yards of material**
 - **Permit conditioned to not allow harvesting until required monitoring is completed**
 - **Gulfward block reef**
 - **0.2 acre of concrete blocks; each block is 2.9 feet by 2.9 feet by 2.9 feet**
 - **1,120 blocks placed in clusters of 32 blocks, 100 feet from subtidal reef**
 - **Fill elevations will not exceed -3.0 ft NAVD88**

Project Location



Project Diagram



Coastal Wetlands Use Plan

- The proposed project is allowable within the General Use District but the applicant is requesting a change to the Coastal Wetlands Use Plan in the footprint of the proposed project to a Special Use District: S-6 for Restoration and Enhancement Areas
 - Justified under Miss. Admin. Code Title 22, Part 23 (MS Coastal Program), Chapter 7, Section 105.06.02
 - “There is a significant public benefit in the activity; impacts to public access and adverse environmental impacts have been minimized; the general public and governmental entities were notified of the project; and a public hearing was held.”

Variance Requests

- **Title 22, Part 23 (MS Coastal Program):**
 - Chapter 8, Section 114.01 “Permanent filling of coastal wetlands below the mean high tide line because of potential adverse and cumulative environmental impacts is not authorized.”
- **Justification:**
 - Chapter 8, Section 118.04 “The activity requires a waterfront location; there is a significant public benefit in the activity; and a public hearing has been held.”

Public and Agency Notice and Comments

- **Public Notice**
 - Notification of the proposed project appeared in The Sun Herald on September 8, 15, & 22, 2024
 - Notification of the proposed project appeared on the MDMR website from August 30 to September 30, 2024
- **Public Hearing on October 24, 2024**

ENHANCE ★ PROTECT ★ CONSERVE

Public and Agency Notice and Comments

- **Questions about whether there would be onshore structures that may affect the scenic qualities of the area**
- **Why beach renourishment doesn't take place south of Gulfside Assembly property**
- **What material will be used**
- **What affect will there be to the material during a hurricane**
- **Any other reefs in the area**
- **Will this project affect beach renourishment**
- **Will there be harvesting of oysters**

Public and Agency Notice and Comments

- **MDEQ: No comments received**
- **MDAH: No comments received**
- **MS SOS: No objections**

Staff Recommendation

- The staff of the Department of Marine Resources has conducted a thorough evaluation of the project and has made findings on the decision factors in accordance with Title 22, Part 23 (Mississippi Coastal Program). The project would serve a higher public interest by:
 - Providing habitat to enhance coastal resource productivity for many species such as shrimp, blue crabs, oysters, and fish
 - Restoring injuries to natural resources caused by DWH oil spill
 - Increasing recreational fishing opportunities

ENHANCE ★ PROTECT ★ CONSERVE

Staff Recommendation Cont'd

- Therefore, staff requests a motion that the Commission recommend to the Executive Director:
 - Approve the requested Variance
 - Approve the requested Use Plan Change
 - Approve the Permit as requested
 - Condition the Permit to contain the following:
 - Submission of adaptive management plan to be reviewed by MDMR staff prior to construction
 - Coordination with US Coast Guard for necessary navigational aids at project location
 - The project area should be inspected for the presence of SAV during the growing season prior to implementation of the project. The survey report should be submitted to MDMR Wetlands Permitting staff at least 30 days prior to project commencement. If SAV is found in the project area, a final review and approval by MDMR staff should be required prior to project commencement



ENHANCE ★ PROTECT ★ CONSERVE

Mississippi Advisory Commission on Marine Resources

November 19, 2024



ENHANCE ★ PROTECT ★ CONSERVE

Mississippi Department of Marine Resources

FY2025 Tidelands Trust Fund



ENHANCE ★ PROTECT ★ CONSERVE

Tidelands FY2026 Schedule

Date	Description
May 31, 2025	Request for Proposals
July 1, 2025	Deadline for Proposals
July - Aug 2025	Compliance Review
September - October 2025	Merit Review
November 2025	Recommendations and CMR Approval of Ranked Proposals
December 2025	Legislative Forum
January 2026	Projects/Report to Legislature
April 2026	FY2026 Appropriations
November 2026	Check from SOS Office
November - December 2026	Projects Awarded

Tidelands Trust Fund

FY2026 Proposal Results

75 APPLICATIONS SUBMITTED
\$30,025,959.00

39 PUBLIC ACCESS
\$22,689,344.00

36 MDMR MANAGED PROJECTS
\$7,336,615.00

27 Submitted by Cities
\$16,217,000.00

23 Submitted by MDMR
\$4,528,200.00

9 Submitted by Counties
\$5,832,000.00

8 Submitted by USM and MGCCC
\$1,485,415.00

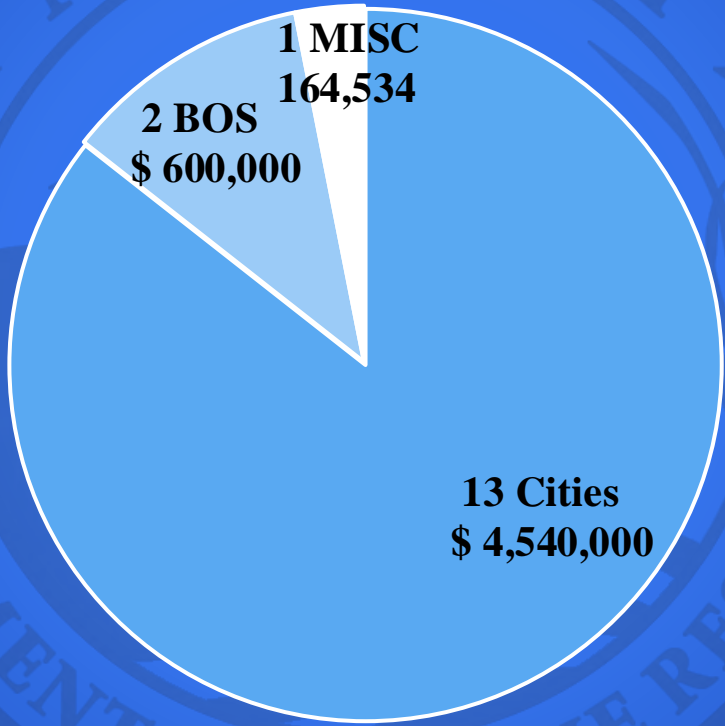
3 Miscellaneous
\$640,344.00

5 Miscellaneous
\$1,323,000.00

Appropriated for FY2025: \$11,000,000

ENHANCE ★ PROTECT ★ CONSERVE

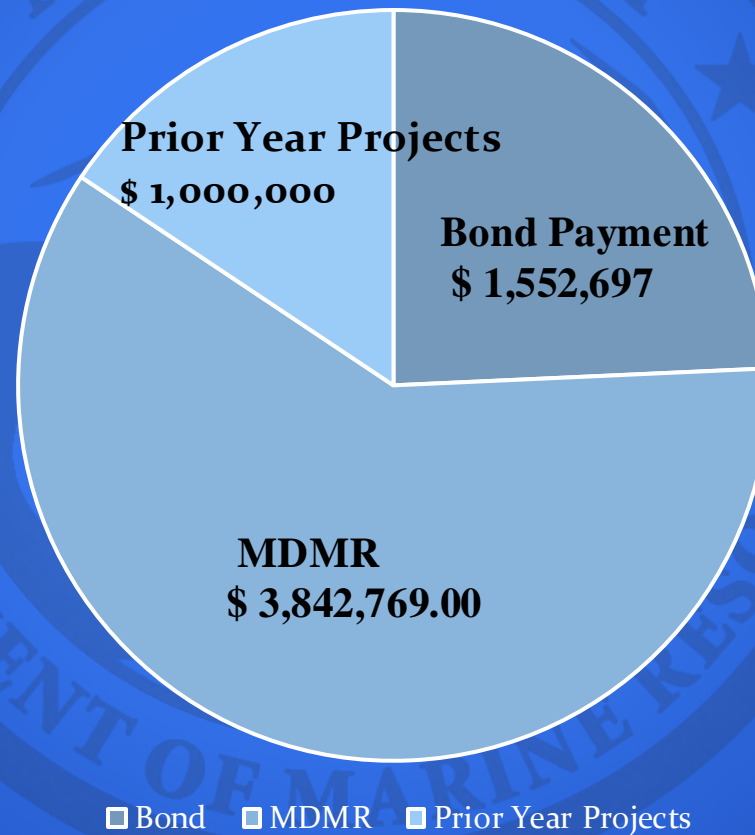
Public Access Awards FY2025



■ Cities ■ Board of Supervisors ■ Misc

Tidelands FY2025 Public Access Awards Total \$ 5,304,534.00

Managed Projects, Prior Year and Bond Payment Awards FY2025



Tidelands FY2025 Managed Projects Allocated \$3,842,769.00



ENHANCE ★ PROTECT ★ CONSERVE

Mississippi Advisory Commission on Marine Resources

November 19, 2024



ENHANCE ★ PROTECT ★ CONSERVE

State Saltwater Finfish Records

Trevor Moncrief
November 19, 2024

K.1.

The seal of the Mississippi Department of Marine Resources is a circular emblem. It features a central illustration of a bird in flight over a body of water with waves. The text "MISSISSIPPI" is arched across the top, and "DEPARTMENT OF MARINE RESOURCES" is arched across the bottom. Two stars are positioned on either side of the central illustration.

Conventional Tackle

ENHANCE ★ PROTECT ★ CONSERVE

Conventional Tackle

Atlantic Stingray
Dasyatis sabina

New Record: 8 lbs. 3.68 oz.

Angler: Jawaun Walton



ENHANCE PROTECT & CONSERVE



ENI

RVE

The seal of the Mississippi Department of Marine Resources is a circular emblem. It features a central illustration of a bird in flight over a body of water with reeds. The text "MISSISSIPPI" is arched across the top, and "DEPARTMENT OF MARINE RESOURCES" is arched across the bottom. Two stars are positioned on either side of the central illustration.

Youth Conventional Tackle

ENHANCE ★ PROTECT ★ CONSERVE

Youth Conventional Tackle

Atlantic Sharpnose Shark

Rhizoprionodon terraenovae

New Record: 11 lbs. 0.64 oz.

Angler: Rodie Armes



ENHANCE ★ PROTECT ★ CONSERVE



ENHANCE ★ PROTECT ★ CONSERVE

Youth Conventional Tackle

Northern Kingfish

Menticirrhus saxatallis

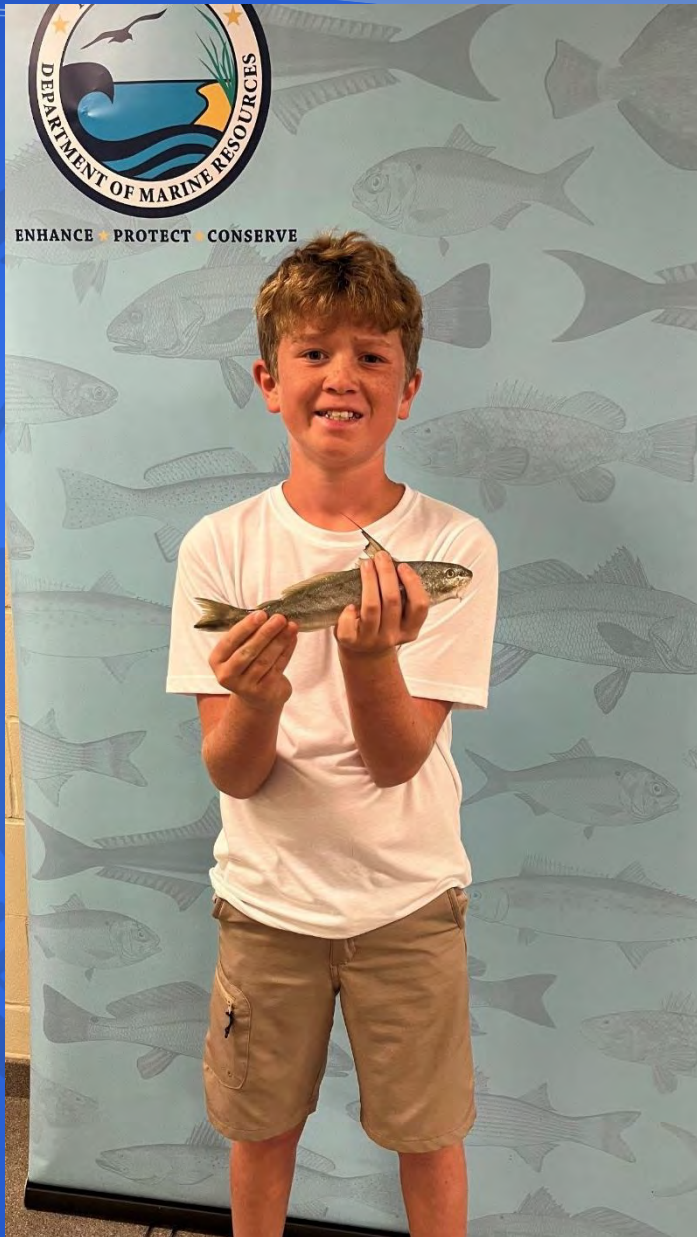
New Record: 0 lbs. 6.08 oz.

Angler: Cooper Wrightson

ENHANCE ★ PROTECT ★ CONSERVE



MISSISSIPPI
MENT OF MARINE RES
ENHANCE ★ PROTECT ★ CONSERVE



ENHANCE ★ PROTECT ★ CONSERVE

The seal of the Mississippi Department of Marine Resources is centered in the background. It features a circular border with the text "MISSISSIPPI" at the top and "DEPARTMENT OF MARINE RESOURCES" at the bottom. Inside the circle, there is a depiction of a bird in flight over a body of water with waves, and a palm frond on the right side. Two stars are positioned on either side of the top text.

Motion to Recommend Adoption of New State Records

ENHANCE ★ PROTECT ★ CONSERVE



ENHANCE ★ PROTECT ★ CONSERVE

Mississippi Advisory Commission on Marine Resources

November 19, 2024



ENHANCE ★ PROTECT ★ CONSERVE



24-06

GRAND BAY NERR INTERPRETIVE CENTER

DETAIL DESIGN
OCTOBER 11, 2024





ENHANCE ★ PROTECT ★ CONSERVE

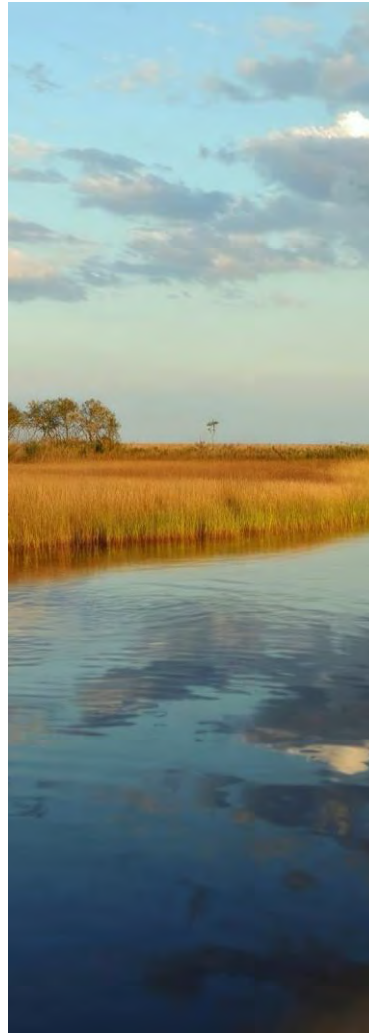


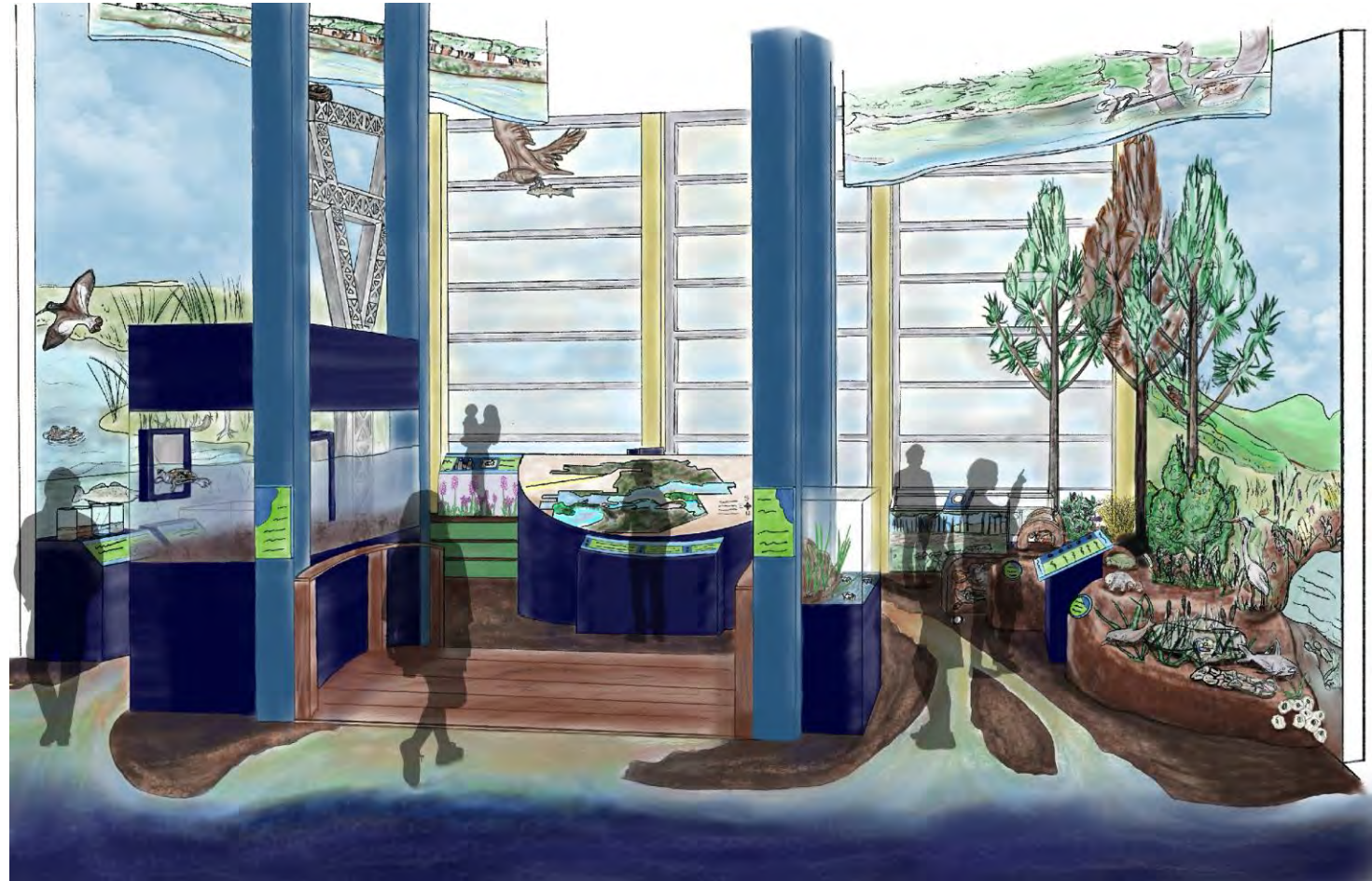
TABLE OF CONTENTS

Exhibit Area	3
Ground Plan	4
Exhibit Area Narrative	5
Exhibit Area - Detail	6
Exhibit Area - Carnivorous Plants	7
Budget Description	8
Reference Images	9



ENHANCE ★ PROTECT ★ CONSERVE

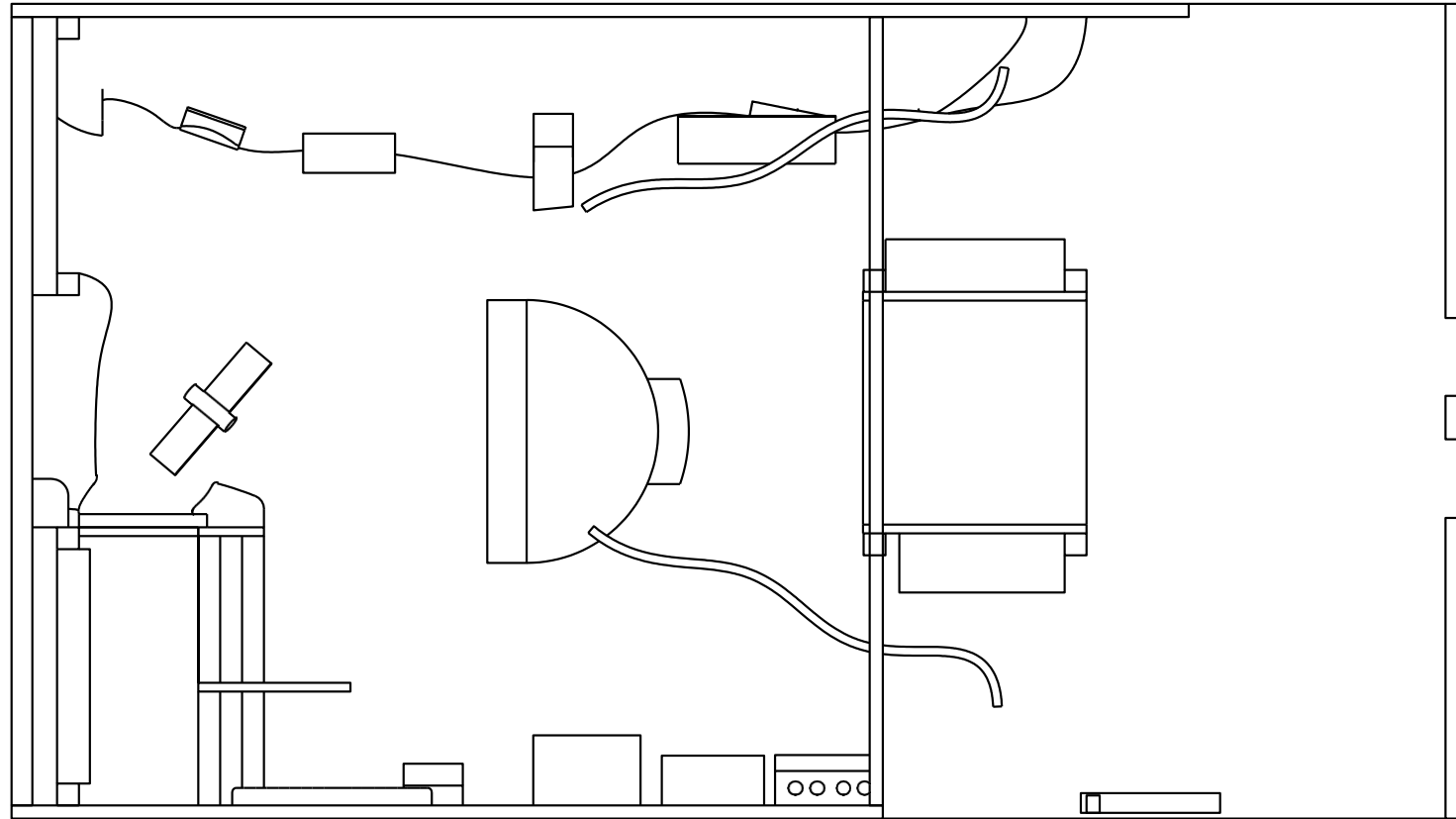
EXHIBIT AREA





ENHANCE ★ PROTECT ★ CONSERVE

GROUND PLAN





ENHANCE ★ PROTECT ★ CONSERVE

EXHIBIT AREA NARRATIVE



Exhibit Narrative:

Central Theme

Much of the value of our coastal ecosystem is revealed in the unseen and unheard.

As visitors peer into the interpretive gallery, they are struck by its visual abundance. A pitched interactive site map instantly attracts visitors through lighting effects that highlight landmarks and orient visitors to the Grand Bay grounds and environs.

Both floor waterways provide discovery pathways into the exhibit. These waterways show progress from estuary to upland. For the purpose at hand, let's imagine a visitor group chooses the right hand path to explore the gallery. They are fascinated to learn something they have never thought about: the processes and organisms (the unseen) that help maintain healthy coastal ecosystems.

A lush diorama interprets estuarine remediation efforts with numerous examples, but it is the wealth of discoverables, touchable animal models, diorama realism, diorama depth, and options for engagement that includes audio that engage adults and children in a memorable experience.

Towards the windows, visitors explore a diorama of carnivorous plants that interpret the fascinating methods they use to acquire nutrients in a tannin-soaked landscape.

Continuing along the windows, visitors peer outside with binoculars from an elevated platform, allowing them to survey the true natural resource, from an elevated platform.

The left side of the space features an herbarium, turbidity, and filtration interactive, which show the necessity and importance of the ecosystem and highlights the efforts of those who maintain it.



Submission Date: 10/11/2024



ENHANCE ★ PROTECT ★ CONSERVE

EXHIBIT AREA - DETAIL

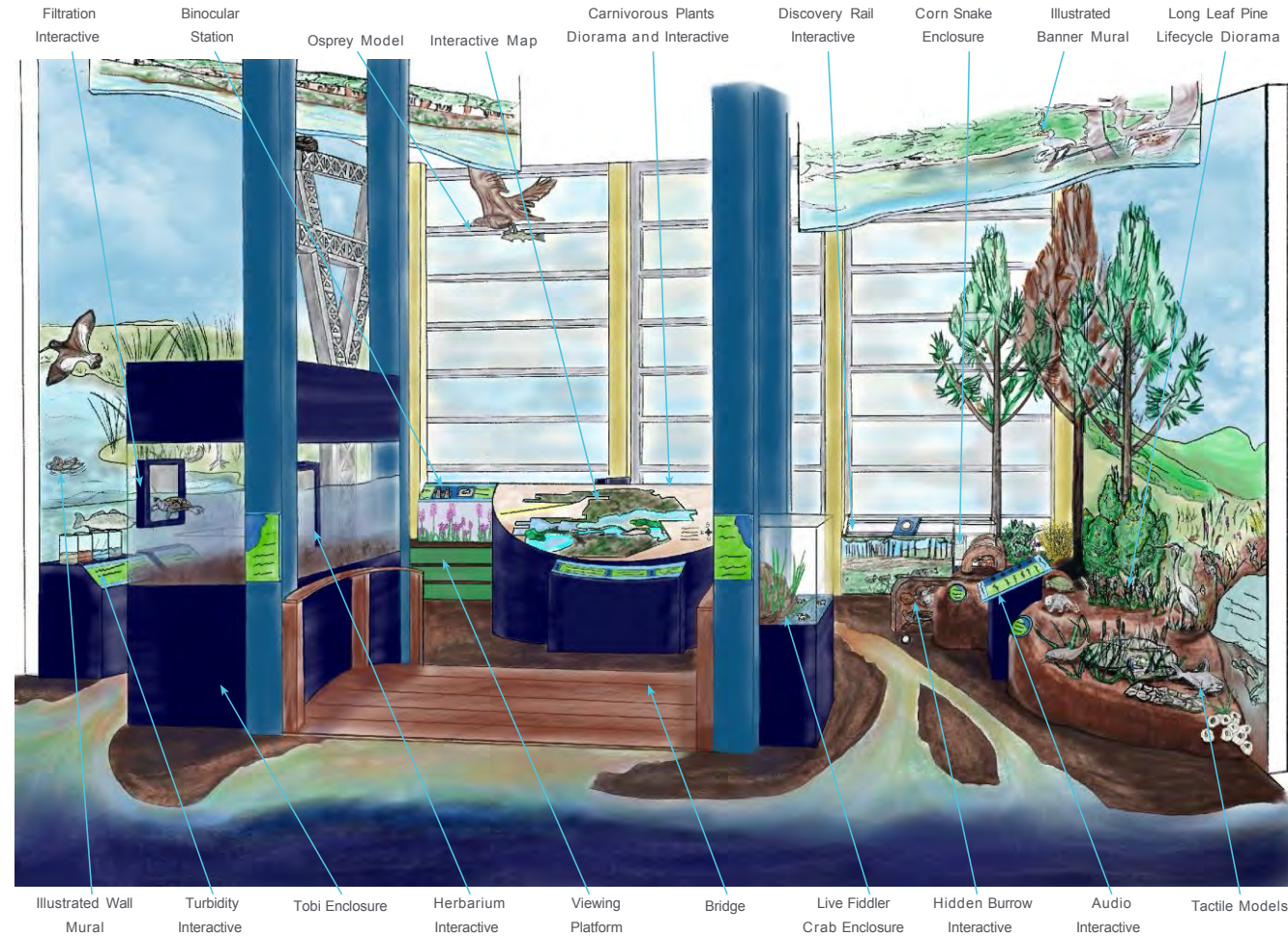


Exhibit Description:

Illustrated Murals

Murals depict the scenery and diversity of Grand Bay through the current illustrative style.

Viewing Platform

This platform looks out over the savanna providing visitors an opportunity to use binoculars to inspect flora and fauna beyond the window. A reader rail incorporates monitors to display recordings and photos of fauna readily visible on the grounds.

Herbarium Interactive

A digital journal book of illustrations interprets the diversity of flora at Grand Bay NERR.

Long Leaf Pine Lifecycle Diorama

This diorama begins at the water's edge and flows upland to interpret the longleaf life cycle and remediation efforts to preserve their habitat. Scattered throughout the diorama are tactile plant and animal models that share the story of how every organism, whether seen or unseen, heard or unheard, contribute to GBN's habitats.

Audio Interactive

Visitors are provided a sampling of immersive sounds created by seen and unseen inhabitants.

Turbidity Interactive

A visual interactive that shows the turbidity of the various waters from ocean to estuary, to further upland. A list of organisms that spend time in the different turbid waters is included.



Submission Date: 10/11/2024



ENHANCE ★ PROTECT ★ CONSERVE

EXHIBIT AREA - CARNIVOROUS PLANTS

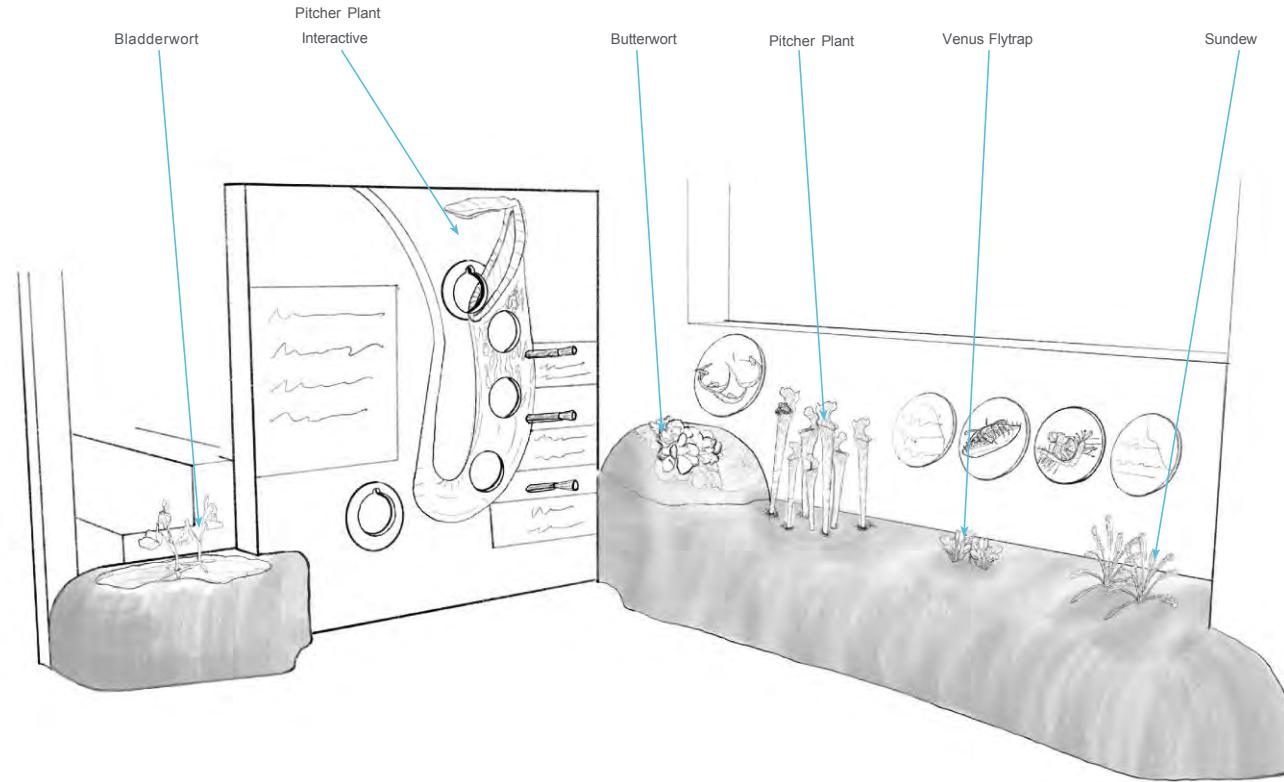


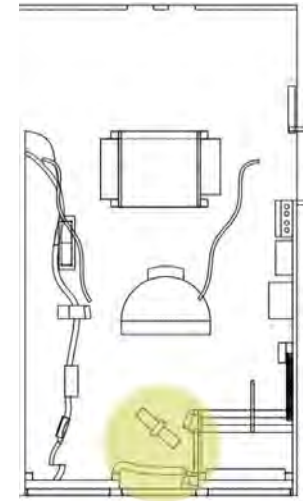
Exhibit Description:

Carnivorous Plant Models

Tactile models of the various carnivorous plants found at Grand Bay line part of the back window. Supporting interpretation explains the reasons for the amazing adaptations utilized by these plants to acquire life-sustaining nutrients.

Pitcher Plant Interactive

The interactive provides the step-by-step method by which the pitcher plant attracts, captures, and digests prey organisms for their sustenance.



Submission Date: 10/11/2024



ENHANCE ★ PROTECT ★ CONSERVE

BUDGET DESCRIPTION

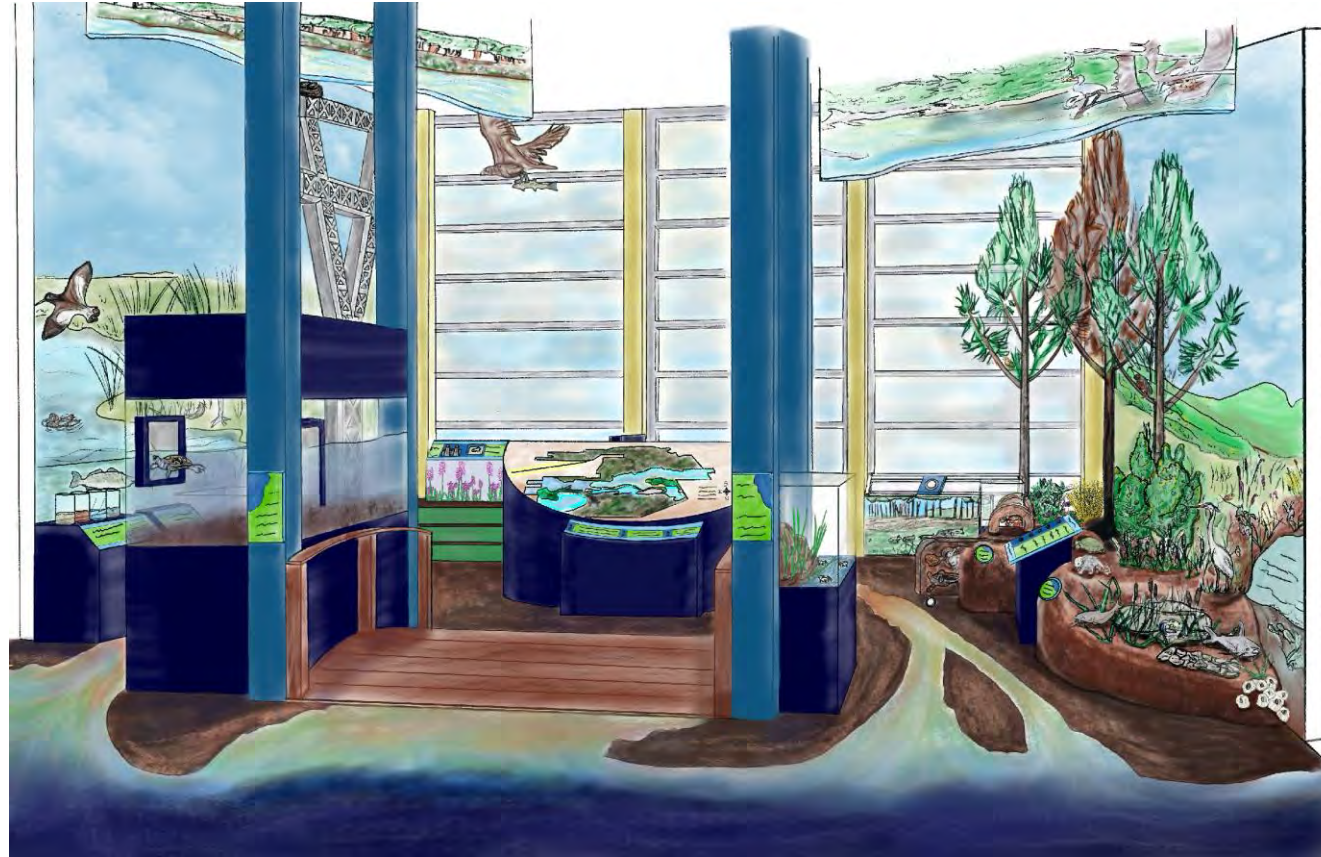


Exhibit Budget Description:

Description

The design seen here can be achieved within a budget range of \$800,000 to \$1,000,000. The design as described throughout this deliverable would need additional design development, starting at Concept Design, for components like copy, graphic panels, and any other stories you would like to incorporate. That design time plus what is seen in the rendering here, is a representation of the lower end of the budget range. Should you be able to raise the higher end of that range, TSI recommends using those additional funds to further the sophistication of the carnivorous plant, herbarium, and filtration interactive. Those funds could also be used to add additional stories like the phytoplankton, SWMP station, and hypoxia suggestions given in the last round of client feedback. Additionally, TSI has included inflation estimates for 2026, 2027, and 2028 should it take longer to secure funds and get the project started. That inflation estimate is represented by a 1.05% multiplier for each additional year after 2025.



ENHANCE ★ PROTECT ★ CONSERVE

REFERENCE IMAGES



Reference for Reader Rail Magnifier



Reference for Reader Rail Magnifier



Reference for Herbarium Interactive



Reference for Audio Interactive



Reference for Turbidity Interactive



Submission Date: 10/11/2024

Grand Bay NERR | Detail Design



ENHANCE ★ PROTECT ★ CONSERVE

Mississippi Advisory Commission on Marine Resources

November 19, 2024