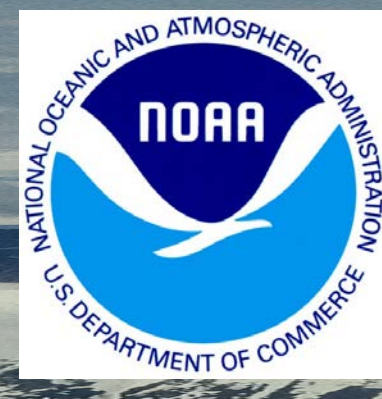
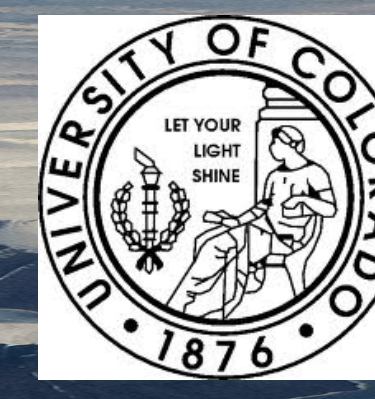


Contacts
 Project Lead: Matthew Shupe
 matthew.shupe@noaa.gov



Datagrams: Summit Hotplate

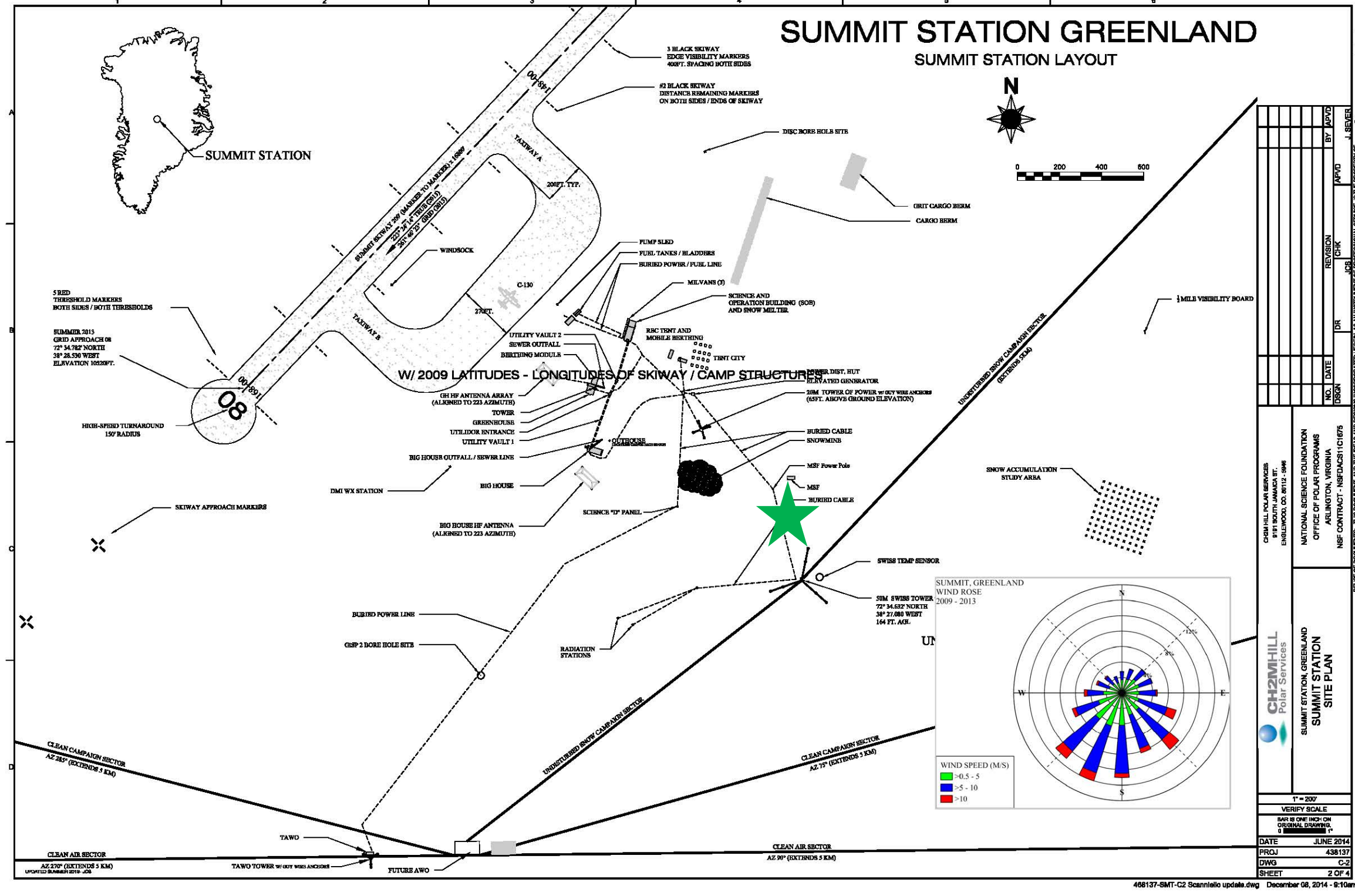


Contacts
 Research Contact: Ben Castellani
 Data Support: Sara Crepinsek
 sara.crepinsek@noaa.gov

File name: YYYYMMDD.dat

Host Time	Version	Status	TPS Time	Rate	Total	Ambient	Box	Wind	Solar	IR	Pressure	RHTemp	RH	TB
00:00:03	002	0000000	14370049 43	00.00	00480.95	-15.4	019.9	00.9	0093	-102	1034.5	-06.3	38.7	00000.76
00:00:08	002	0000000	14370049 48	00.00	00480.95	-15.4	019.9	01.0	0094	-102	1034.3	-06.3	38.5	00000.76

Data Diagnostics Logger Info



★ Indicates current location of instrument



Instrument Details	
Specifications	1
Measurement	Precipitation
Serial #	
Instrument Manufacturer	Yankee Environmental Systems, Inc.
Type	TPS-3100
Calibration factors	None applied externally. Internally the manufacturer applies many corrections related to winds, radiation, and others based on additional sensor measurements that are integrated into the system.
Location	Installed near and to the south of the MSF (with the other precipitation instruments)
Additional Corrections Applied (y/n/explain)	

Summit Data Center

NOAA

FTP File locations at NOAA:
 From Summit Data Center to:
 ftp://ftp.etl.noaa.gov/psd3/arctic/summit/hotplate/raw/

Processing

Quicklooks

Example Plots:

Home:
<http://www.esrl.noaa.gov/psd/iasoa/>
Data:
<http://www.esrl.noaa.gov/psd/iasoa/dataataglance>

IASOA Portal

Product

Product File: