

Contacts
Principal Investigator: Ralf Bennartz
ralf.bennartz@vanderbilt.edu



Datagrams: Summit



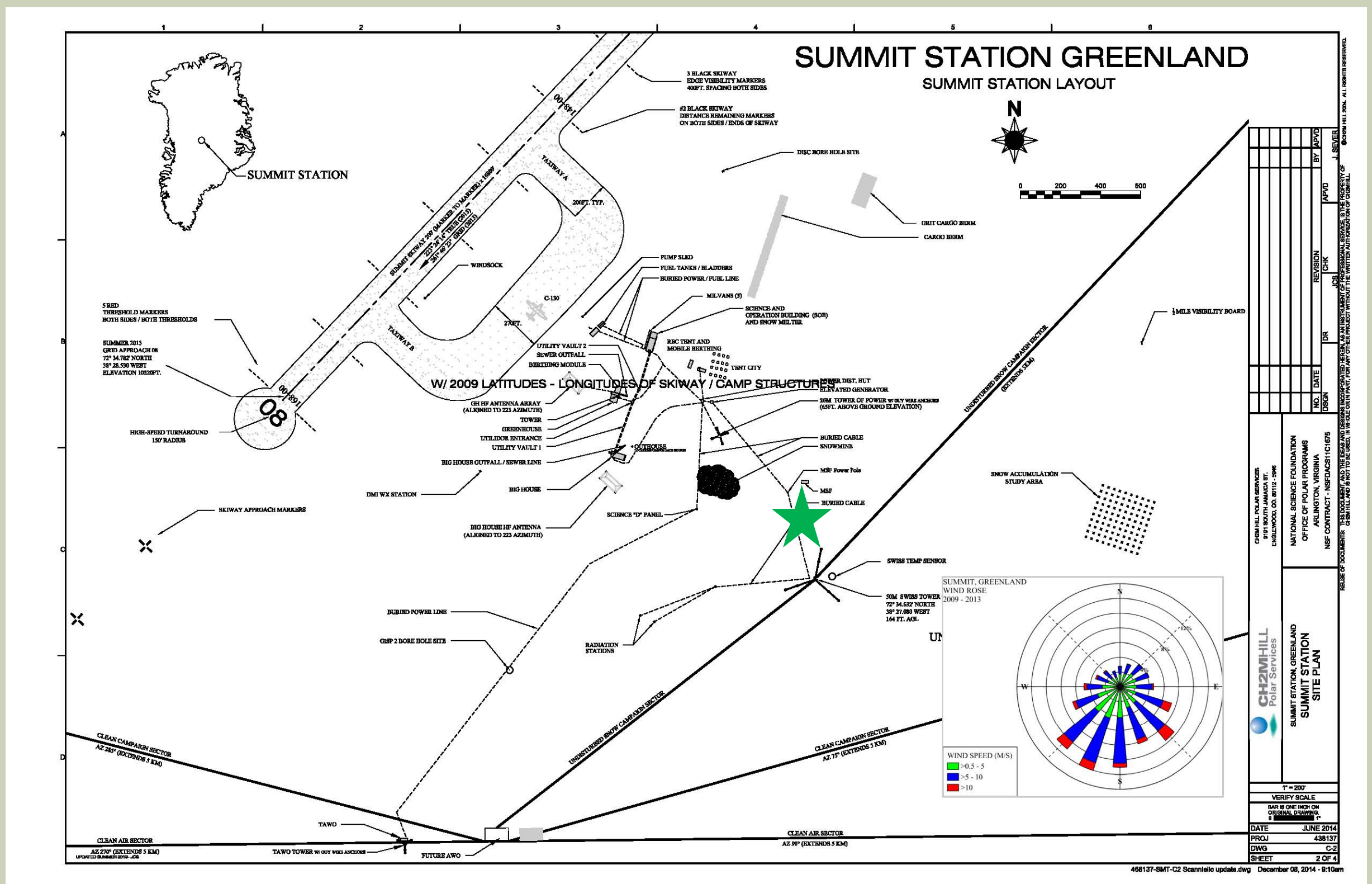
Contacts
Research Contact: Elena Willmot
kathleen.e.willmot@vanderbilt.edu
Data Support: Sara Crepinsek
sara.crepinsek@noaa.gov

MASC: Multi-Angle Snowflake Camera

File name: MASC_YYYY.MM.DD_hhZ.tar.gz
mascYYYY.MM.DD.tar.gz

** These are archives of photographs **

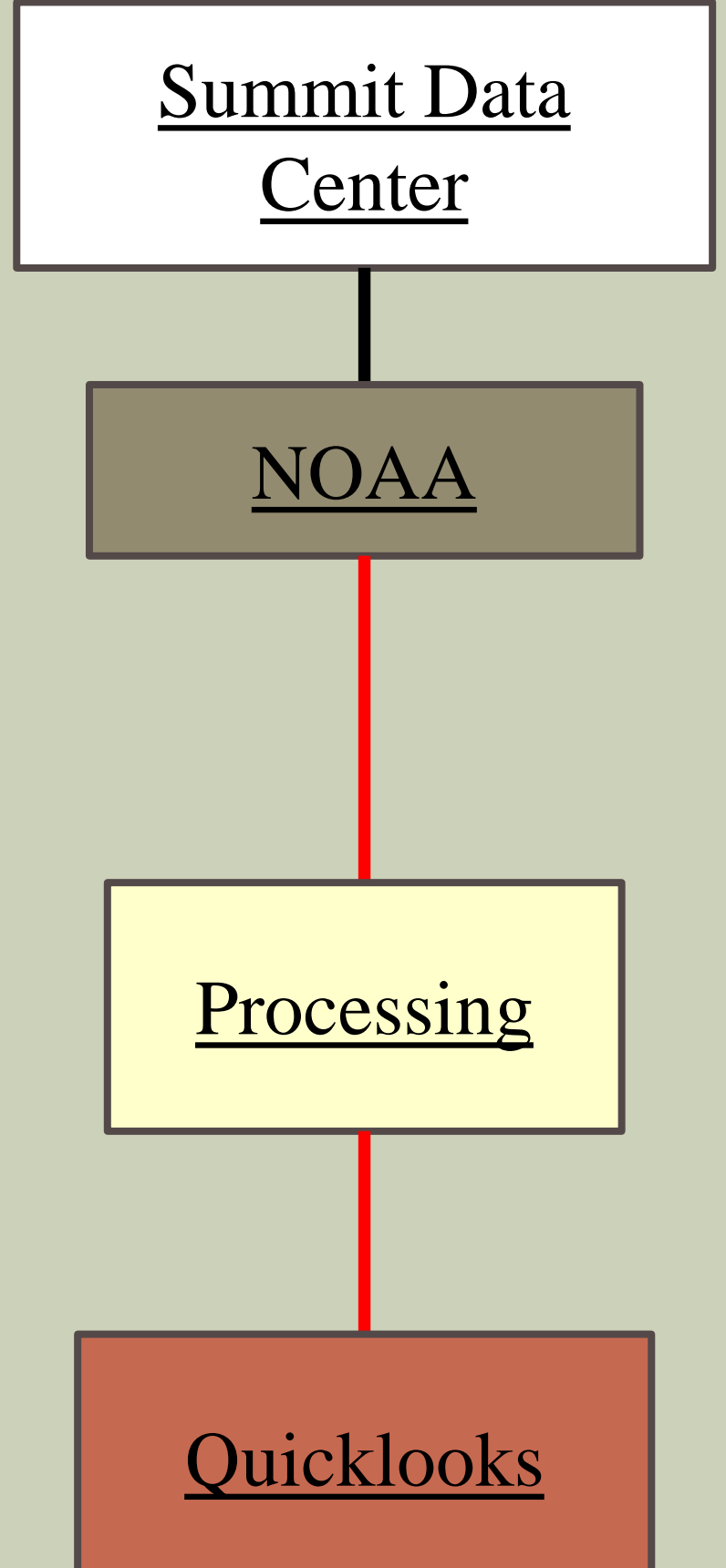
dataInfo.txt	snowflakeID	Date (mm.dd.yyyy)	Time (hh:mm:ss,mm mmmm)	Fallspeed (m/s)																
imgInfo.txt	snowflakeID	cameraID	Date (mm.dd.yyyy)	Time (hh:mm:ss,mmm mmm)	Image_name	Frame_times tamp														
statusLog.txt	Time	TimeStamp	ERR_CR	MCR_DISCNCT	MCR_WAIT	MCR_PWR	MCR_BR WN	MCR_SFT WR	MCR_EXTR	MCR_WTCH DG	BUS_RS T	IMG_QF ULL	IMG_BA DFRAME	FS_QFU LL	CAM0_detected	errors	CAM1_detected	errors	CAM2_detected	errors
Data	Diagnostics	Logger Info																		



★ Indicates current location of instrument

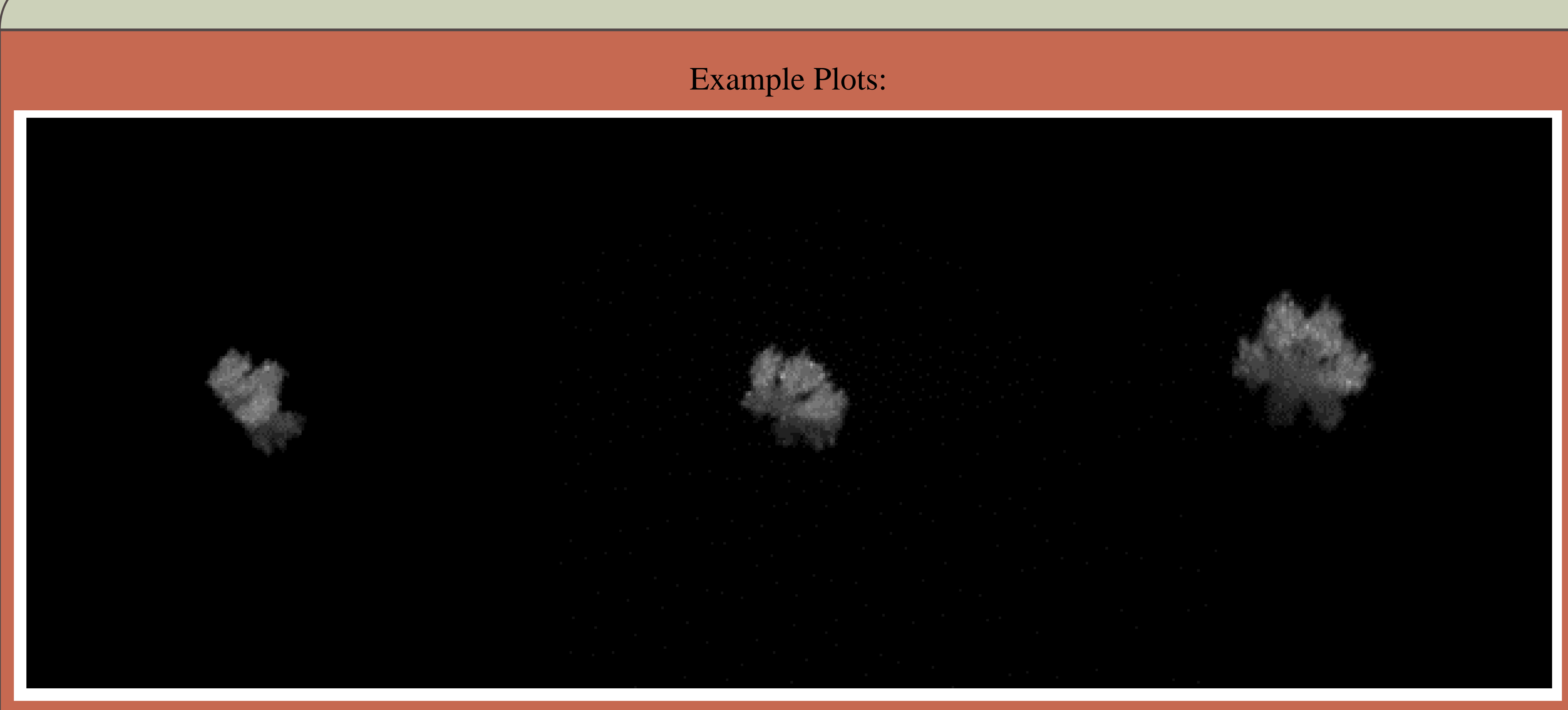


Instrument Details	
Specifications	1
Measurement	Multi-angle snowflake camera
Serial #	3
Instrument Manufacturer	Fallgatter Technologies
Type	Multi-angle snowflake camera
Location	Located to the south of the MSF on the snow surface



FTP File locations at NOAA:
From Summit Data Center to:
ftp://ftp.etl.noaa.gov/psd3/arctic/summit/masc/

From the three cameras that are focused on the same point, each will take a picture of the same snowflake as it falls through the multi-angle snowflake camera. An example of the trio of images is seen below in the "example plots" section.



Home:
<http://www.esrl.noaa.gov/psd/iasoa/>
Data:
<http://www.esrl.noaa.gov/psd/iasoa/dataataglance>

[IASOA Portal](#)

[Product](#)

Product File:

See images above: plot section