

Contacts

Project Lead: Matthew Shupe
 matthew.shupe@noaa.gov
 Instrument Contact: David Hudak
 david.hudak@ec.gc.ca



Datagrams: Summit



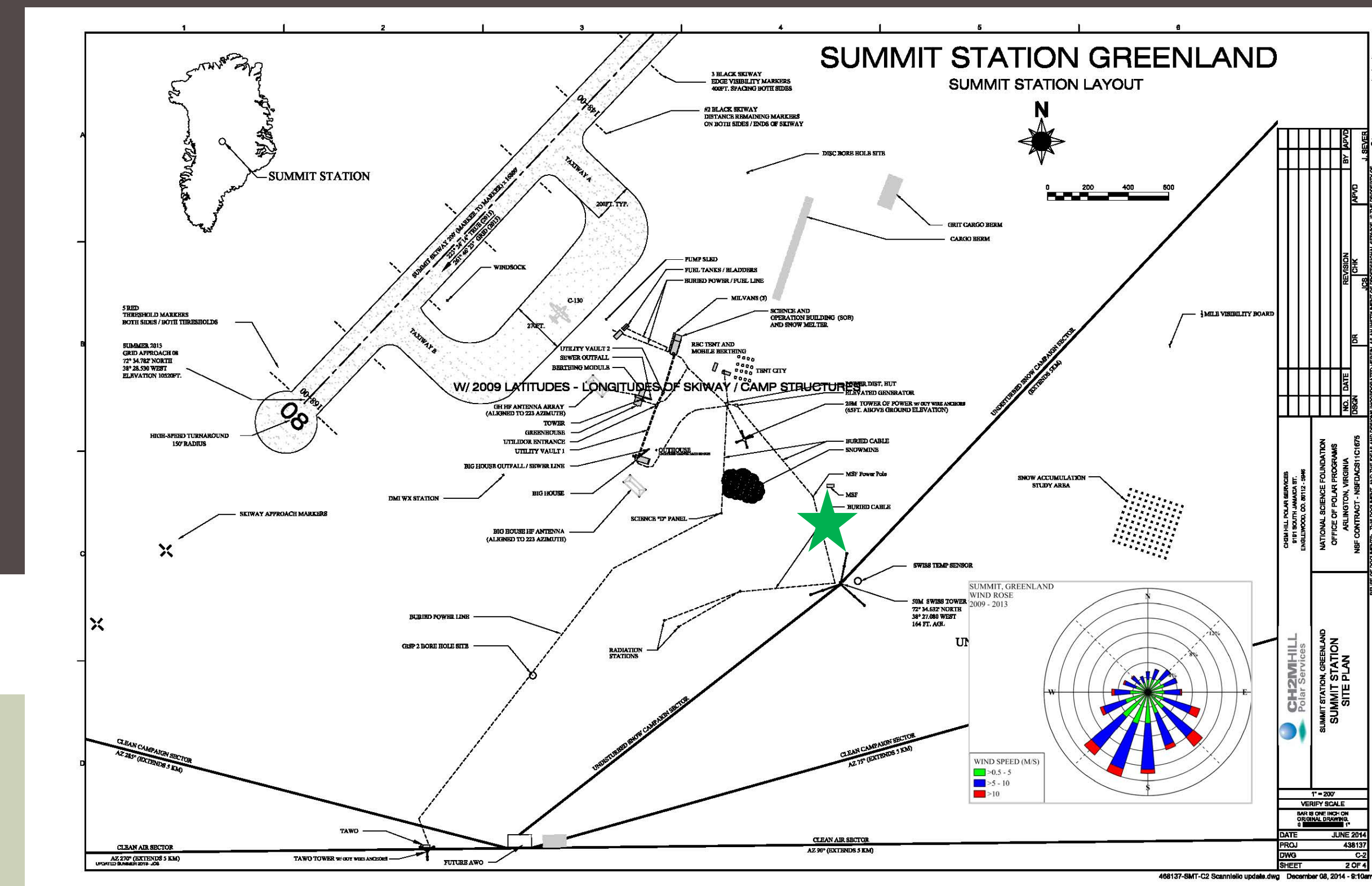
Contacts

Research Scientist: Ben Castellani
 Data Support: Sara Crepinsek
 sara.crepinsek@noaa.gov

POSS: Precipitation Occurrence Sensor System

File Type	File Names	File Location NOAA ftp
Daily log file from the POSS	MAINLOGYYYYMMDD.txt	ftp://ftp.etl.noaa.gov/psd3/arctic/summit/poss/mainlog/
Daily message file from the POSS	MESPOSYYYYYMMDD.txt	ftp://ftp.etl.noaa.gov/psd3/arctic/summit/poss/mespos/
Daily raw POSS file in ASCII	POSYYYYMMDD.txt	ftp://ftp.etl.noaa.gov/psd3/arctic/summit/poss/pos/

****This system is borrowed from Environment Canada****



★ Indicates current location of instrument

Summit Data Center

NOAA

FTP File locations at NOAA:
 From Summit Data Center to: A:\summit\poss

Processing

Raw data is processed with the "DSD21" program that was produced by Environment Canada. The basics of the retrieval that is applied during the processing are explained in Sheppard and Joe (2008).

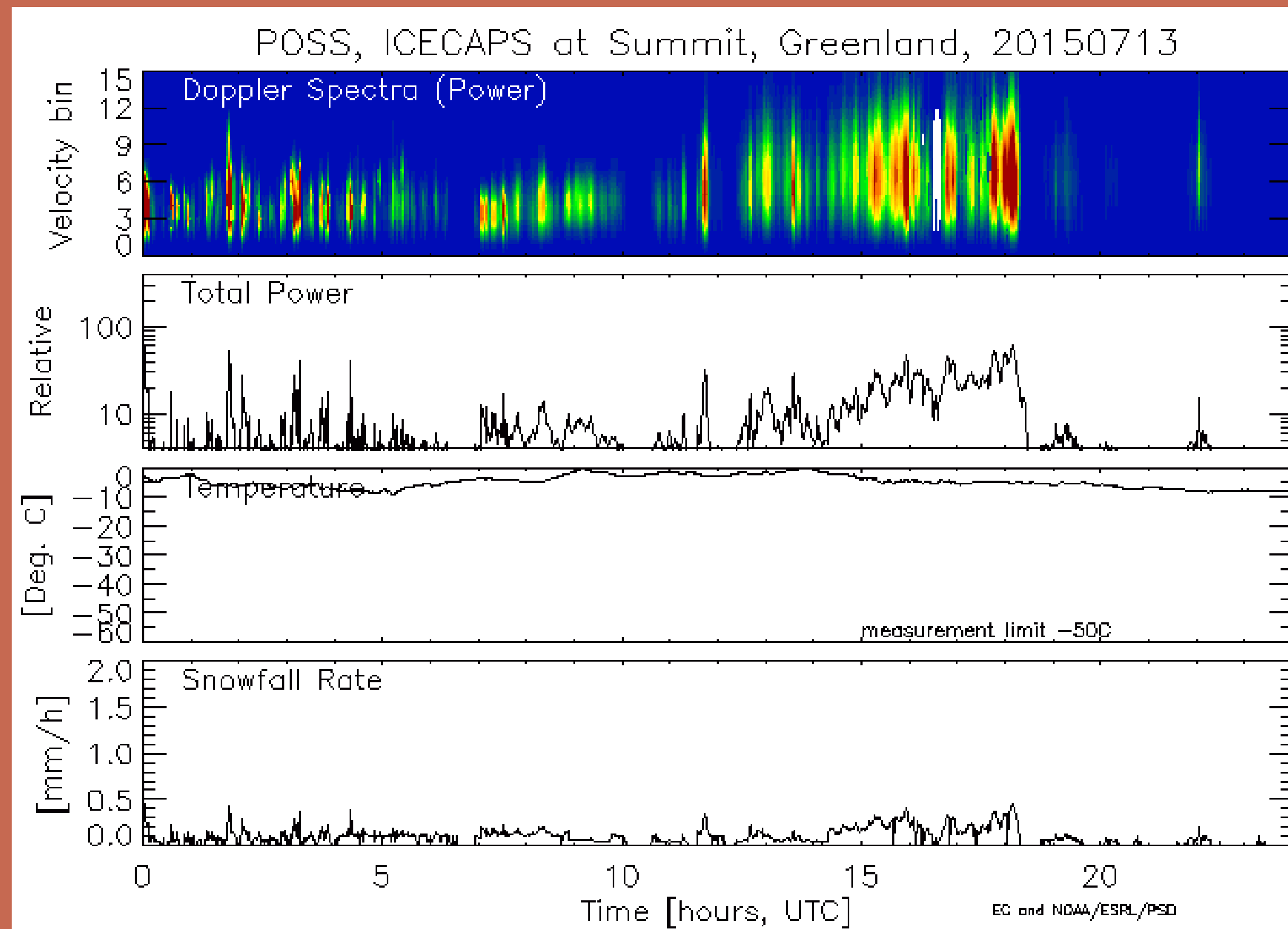
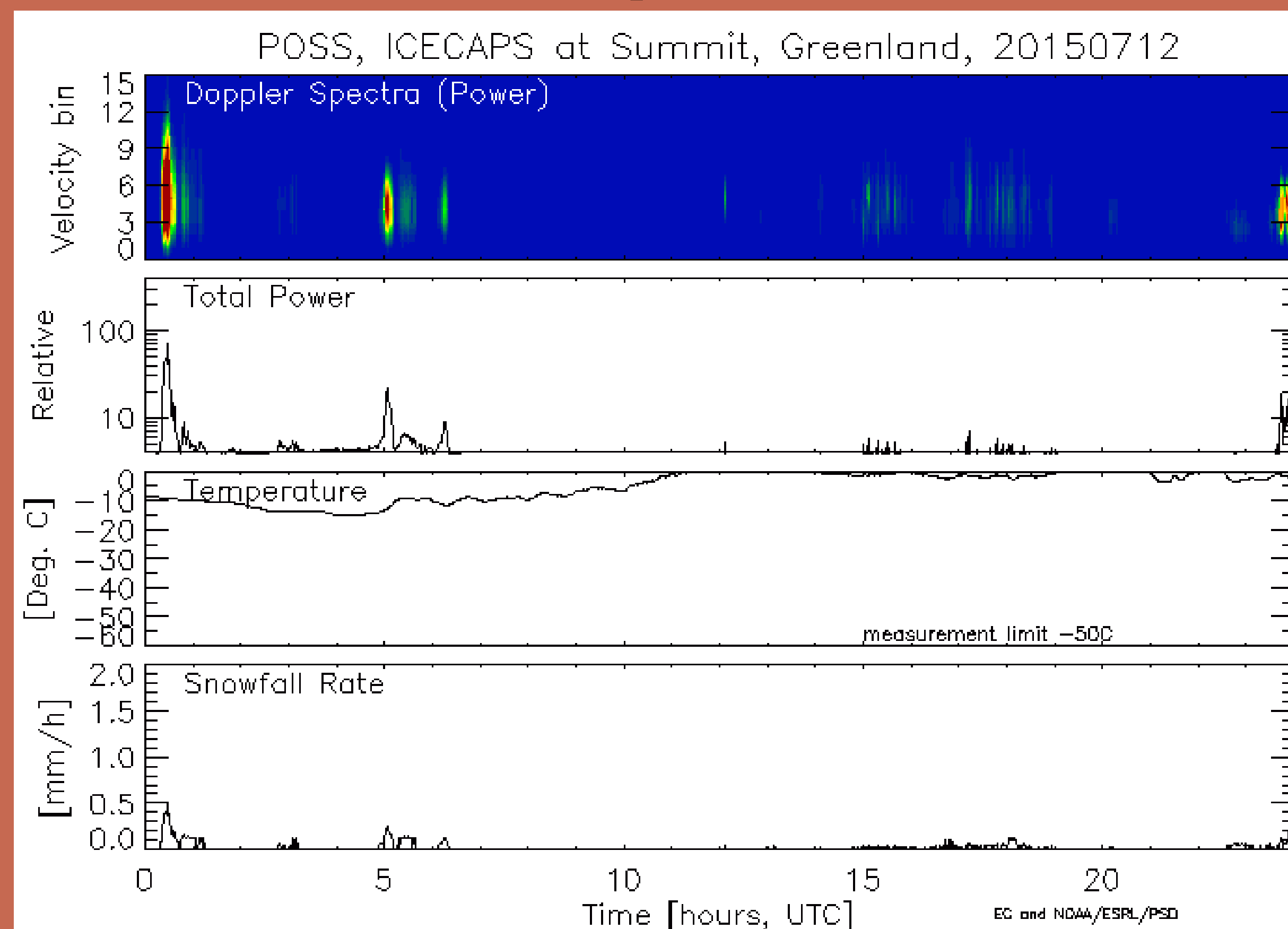
Sheppard, B. E., and P. I. Joe, 2008: Performance of the Precipitation Occurrence Sensor System as a precipitation gauge. J. Atmos. Oceanic Technol., 25, 196-212.

Environment Canada Sensor Information: <https://ec.gc.ca/meteoaloeil-skywatchers/default.asp?lang=En&n=5BD6EC5C-1>

Quicklooks

Instrument Details	
Specifications	1
Measurement	Precipitation occurrence
Serial #	117
Instrument Manufacturer	Environment Canada (in-house)
Type	In-house made, no type
Location	This instrument was installed on the top of the MSF, but in the summer of 2014 it was moved to a "precipitation station" on the snow surface near and to the south of the MSF
Additional Corrections Applied (y/n/explain)	

Example Plots:



Home:

<http://www.esrl.noaa.gov/psd/iasoa/>

Data:

<http://www.esrl.noaa.gov/psd/iasoa/dataataglance>

IASOA Portal

Product

Product File:

File Type	File Names	File Location NOAA ftp
Processed files that include applying a precipitation rate retrieval – soon netCDF files will be generated in this folder to replace this information and this file stream will no longer be publically available	PRYYMMDD.117.CSV	ftp://ftp.etl.noaa.gov/psd3/arctic/summit/poss/processed/DSD20/
Processed files that include applying a precipitation rate retrieval – soon netCDF files will be generated in this folder to replace this information and this file stream will no longer be publically available	PRYYMMDD.117.CSV	ftp://ftp.etl.noaa.gov/psd3/arctic/summit/poss/processed/DSD21/
Daily quicklook images of POSS data	smtpossprec.b1.YYYYMMDD.hhmmss.png	ftp://ftp.etl.noaa.gov/psd3/arctic/summit/poss/quicklooks/