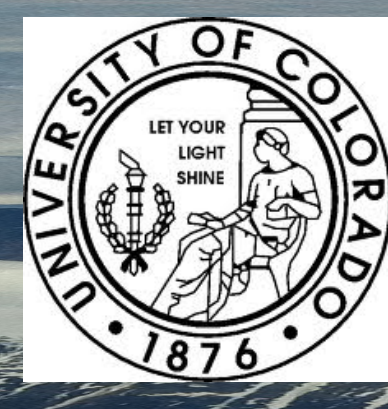
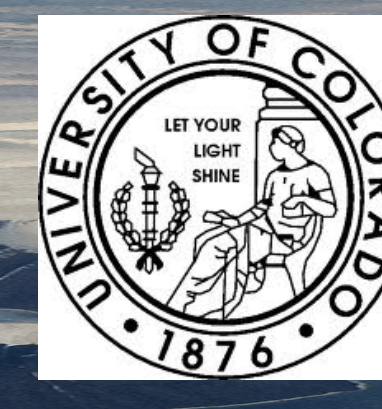


Contacts
 Project Lead: Matthew Shupe
 matthew.shupe@noaa.gov
 Project Co-Lead: Von P. Walden
 v.walden@wsu.edu

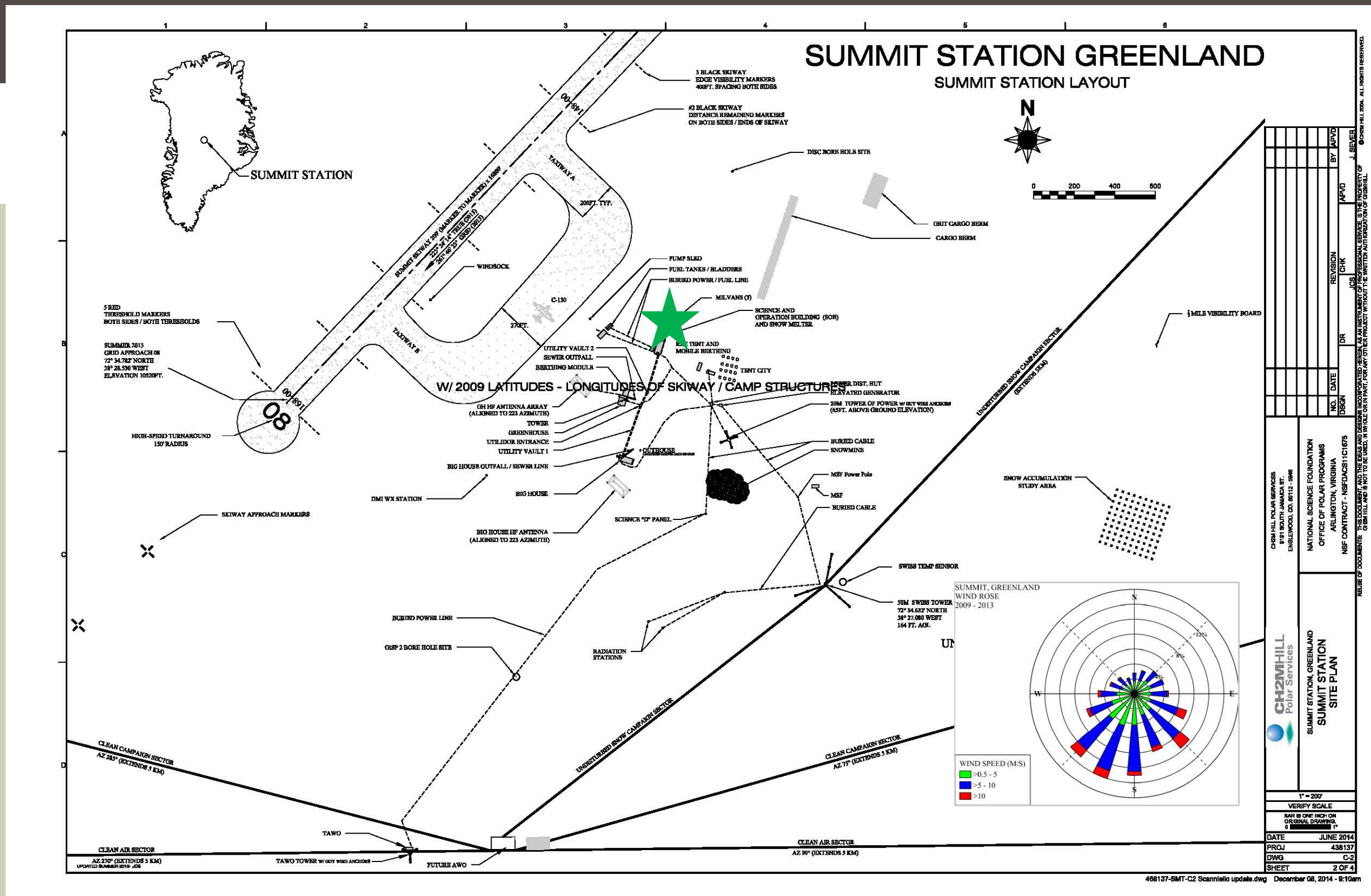


Datagrams: Summit Radiosonde



Contacts
 Research Contact: Nathaniel Miller
 nathaniel.miller@colorado.edu
 Data Support: Sara Crepinsek
 sara.crepinsek@noaa.gov

File name: SMT_YYYYMMDD_hhmmss.dc3db
 SMT_YR.3.082 -1.19923YR.3.082 -1C39 /P <<9P <<RppC39d.cEs</P <<9/P <8(cDhC39d.chC39d.cmm.3(D)_Y)1
 From Summit Data Center to:
 ftp://ftp.etl.noaa.gov/psd3/arctic/summit/radiosonde/



★ Indicates current location of instrument

Quicklooks

Processing

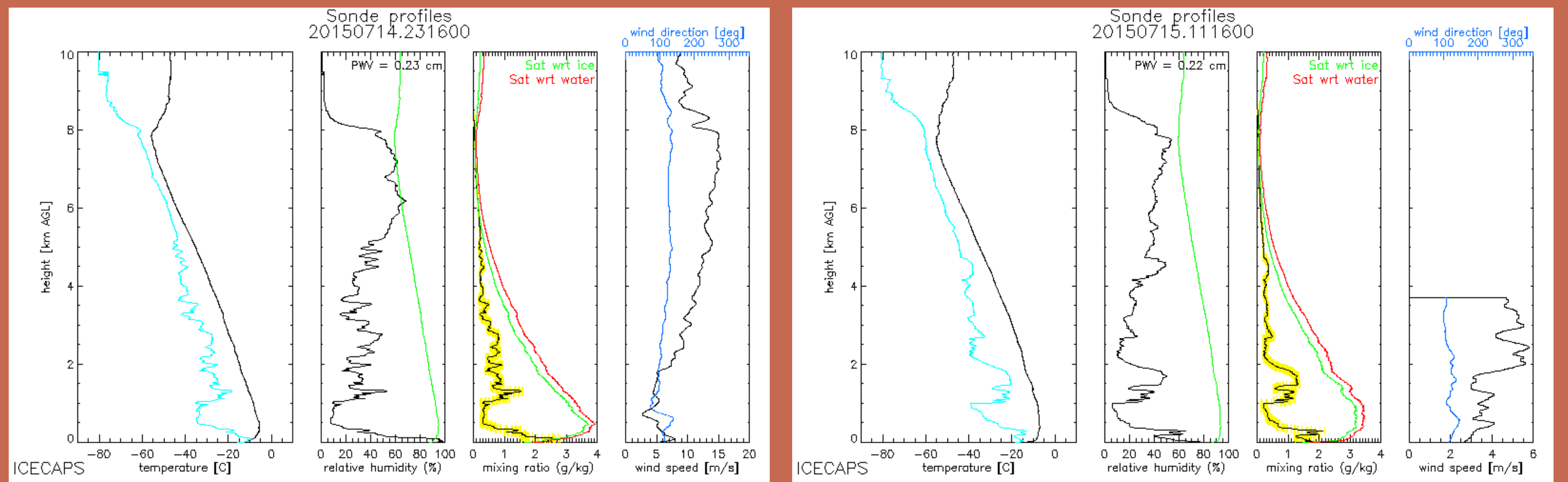
Files transferred to Global Telecommunications Systems at the World Meteorological Organization: <http://www.wmo.int/pages/prog/www/ois/volume-a/vola-home.htm>
 Raw files are processed with standard Vaisala DigiCOR software. Individual raw radiosonde files are ingested into individual netCDF files.

Instrument Details	
Specifications	
Measurement	Wind spd/dir, altitude, pressure, relative humidity, dew point, temp
Serial #	RSJ4643668
Instrument Manufacturer	Vaisala
Type	RS-92K, RS-92GP
Ground Station	MW31
Location	Sondes are launched from the SOB building
Additional Corrections Applied (y/n/explain)	



Radiosonde

Example Plots:



Home:
<http://www.esrl.noaa.gov/psd/iasoa/>
Data:
<http://www.esrl.noaa.gov/psd/iasoa/dataatagance>

IASOA Portal

Home:
www.archive.arm.gov

ARM Archive

Product

Archived files located at ARM.gov
http://www.archive.arm.gov/armlogin/log_in.jsp

File name:	smtsondewnpnX1.b1.20150714.111600.cdf	
Path:	summit\radiosonde\processed	
Attributes		
Name	Value	
'comment_00'	'Location: Radiosonde launched at Summit Camp, Greenland, as part of the ICECAPS project'	
'comment_01'	'Experiment: Integrated Characterization of Energy, Clouds, Atmospheric State, and Precipitation at Summit (ICECAPS), Shupe et. al. 2012 (BAMS)'	
'comment_02'	'PIs: Matthew Shupe, Von Walden, David Turner, and Ralf Bennartz'	
'comment_03'	'Contact = Von Walden (vonw@uidaho.edu)'	
'comment_04'	'Serial_number: RSJ4643668'	
'comment_05'	'Launch_time: 1116Z 14 JUL 15'	
'comment_06'	date this NetCDF file was created was Wed Jul 15 04:30:02 2015'	
'comment_07'	'\$Id: read_sonde2cdf.pro,v 1.13 2013/02/14 15:12:58 nbmiller Exp \$'	
'comment_08'	'\$Id: write_arm_sonde_file_3.pro,v 1.7 2012/09/13 15:18:29 nbmiller Exp \$'	
'serial_number'	'RSJ4643668'	
'missing_data_flag'	'-9999'	
Dimensions		
Name	Length	
time	2541	
Variables		
Name	Long name	Units
'base_time'	'Time since 1970-01-01 00:00:00'	'seconds'
'time_offset'	'Time since base_time'	'seconds'
'pres'	'Pressure'	'hPa'
'tdry'	'Dry bulb temperature (i.e., ambient temperature)'	'C'
'rh'	'Relative humidity'	'%'
'time_post'	'Time after launch'	'sec'
'dpt'	'Dew point'	'C'
'wspd'	'Wind speed'	'm/s'
'wdir'	'Wind direction'	'deg'
'lat'	'Latitude'	'deg N'
'lon'	'Longitude'	'deg E'
'alt'	'Altitude'	'm MSL'