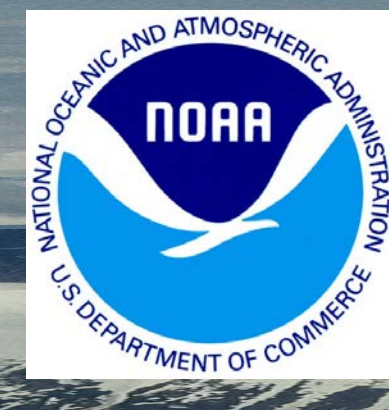


Contacts
 Project Lead: Matthew Shupe
 matthew.shupe@noaa.gov
 Engineer: Scott Abbott
 scott.abbott@noaa.gov



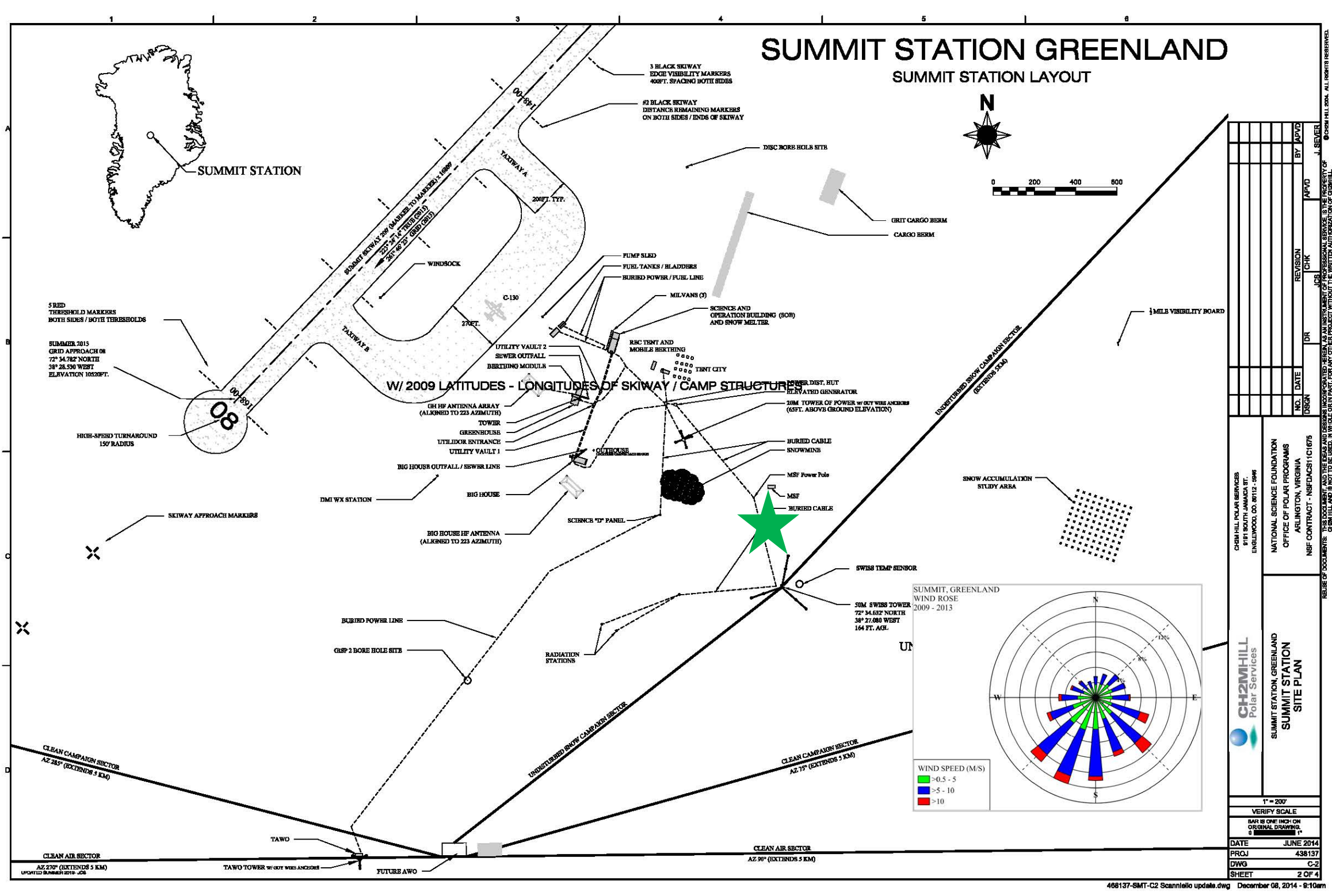
Datagrams: Summit NOAA Sodar



Contacts
 Principal Investigator: Bill Neff
 william.neff@noaa.gov
 Data Support: Sara Crepinsek
 sara.crepinsek@noaa.gov

netCDF metadata

File name: 15194_SodarPC.nc		Path: summit\sodar\raw	
Attributes			
Name	Value		
'FileVersion'			
Dimensions			
Name	Length		
'MaxNumberOfHeaders'	10		
'MaxStringLength'	32		
'MaxNumberOfReflectivityHeights'	512		
'TimeIndex'	85066		
Variables			
Name	Long name	Units	
'SiteName'			
'Latitude'	'Latitude'	'Degrees'	
'Longitude'	'Longitude'	'Degrees'	
'Elevation'	'Elevation'	'Meters'	
'Azimuth_Beam1'	'Azimuth of beam number 1'	'Degrees'	
'Elevation_Beam1'	'Elevation of beam number 1'	'Degrees'	
'TxFrequency'	'Frequency of Transmit pulse'	'KHz'	
'PulseLength'	'Length of Transmit pulse'	'Milliseconds'	
'SampleRate'	'Frequency of sampling'	'KHz'	
'RecordDelay'	'Delay between Transmit and beginning of recording'	'Milliseconds'	
'SampleLength'	'Length of sample'	'Milliseconds'	
'AirTemperatureC'	'Outside air temperature'	'Degrees Celcius'	
'HeaderIndex'			
'Time'	'Time of data acquisition'	'Seconds since January 1, 1970'	



★ Indicates current location of instrument



Instrument Details

Specifications	
Measurement	Reflectivity, Boundary Layer Depth
Serial #	
Instrument Manufacturer	
Type	2,100 Hz, <1 m vertical resolution, 1 sec time resolution
Location	Installed on the snow surface near the MSF
Additional Corrections Applied (y/n/explain)	

Home:
<http://www.esrl.noaa.gov/psd/iasoa/>
Data:
<http://www.esrl.noaa.gov/psd/iasoa/dataataglance>

[IASOA Portal](#)

Summit Data Center

NOAA

FTP File locations at NOAA:

From Summit Data Center to:
<ftp://ftp.etl.noaa.gov/psd3/arctic/summit/sodar/>

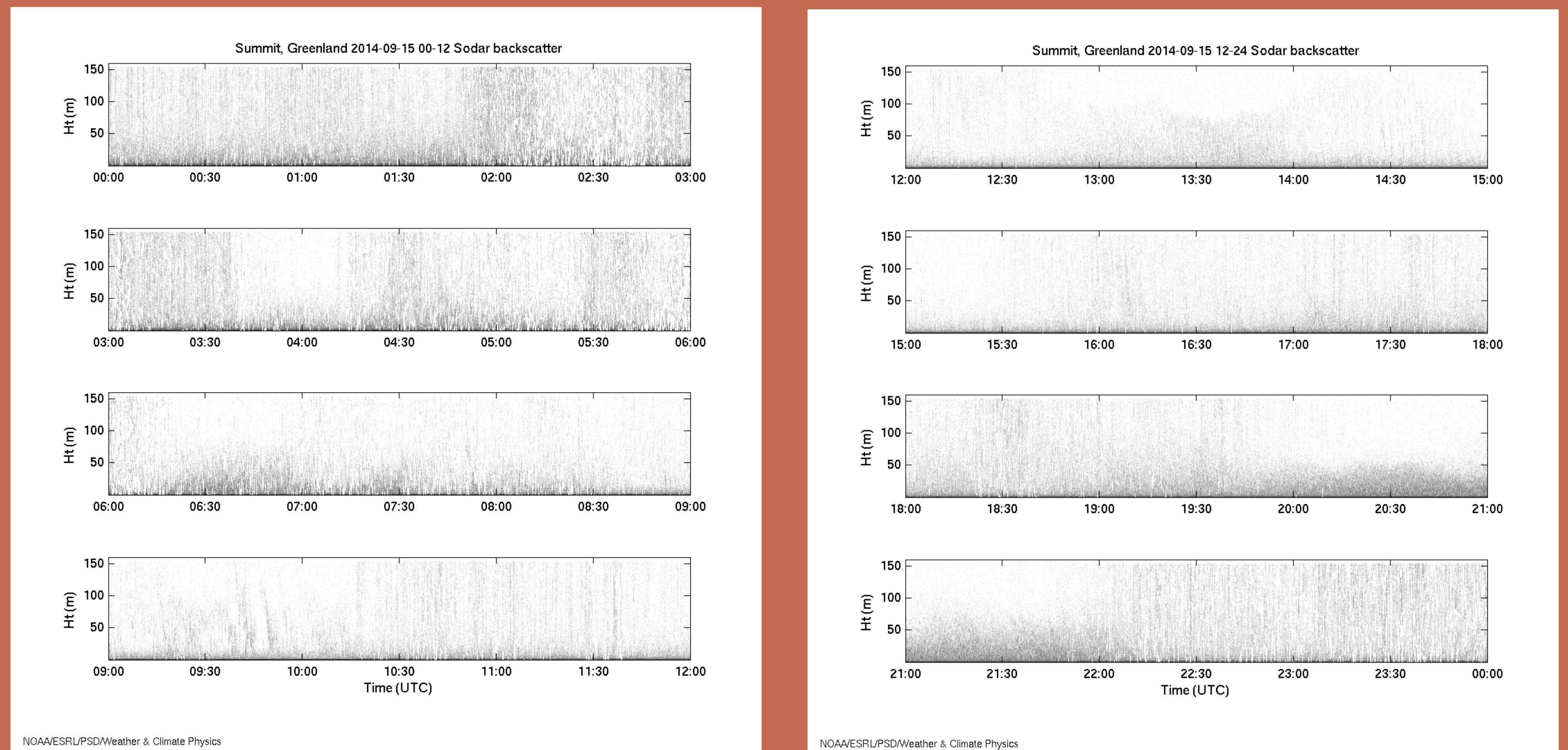
Quicklooks

Processing

Processing steps conducted by William (Bill) Neff: william.neff@noaa.gov

Reference publication: Neff, W.D., D. Helmig, A. Grachev, and D. Davis, 2008: A study of boundary layer behavior associated with high NO concentrations at the South Pole using a minisodar, tethered balloon, and sonic anemometer. *Atmos. Environ.*, **42**, 2762-2779.

Example Plots:



Product

Product File: