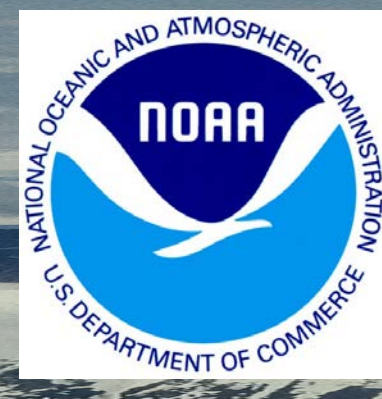
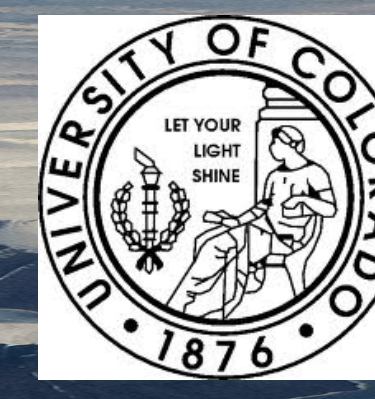


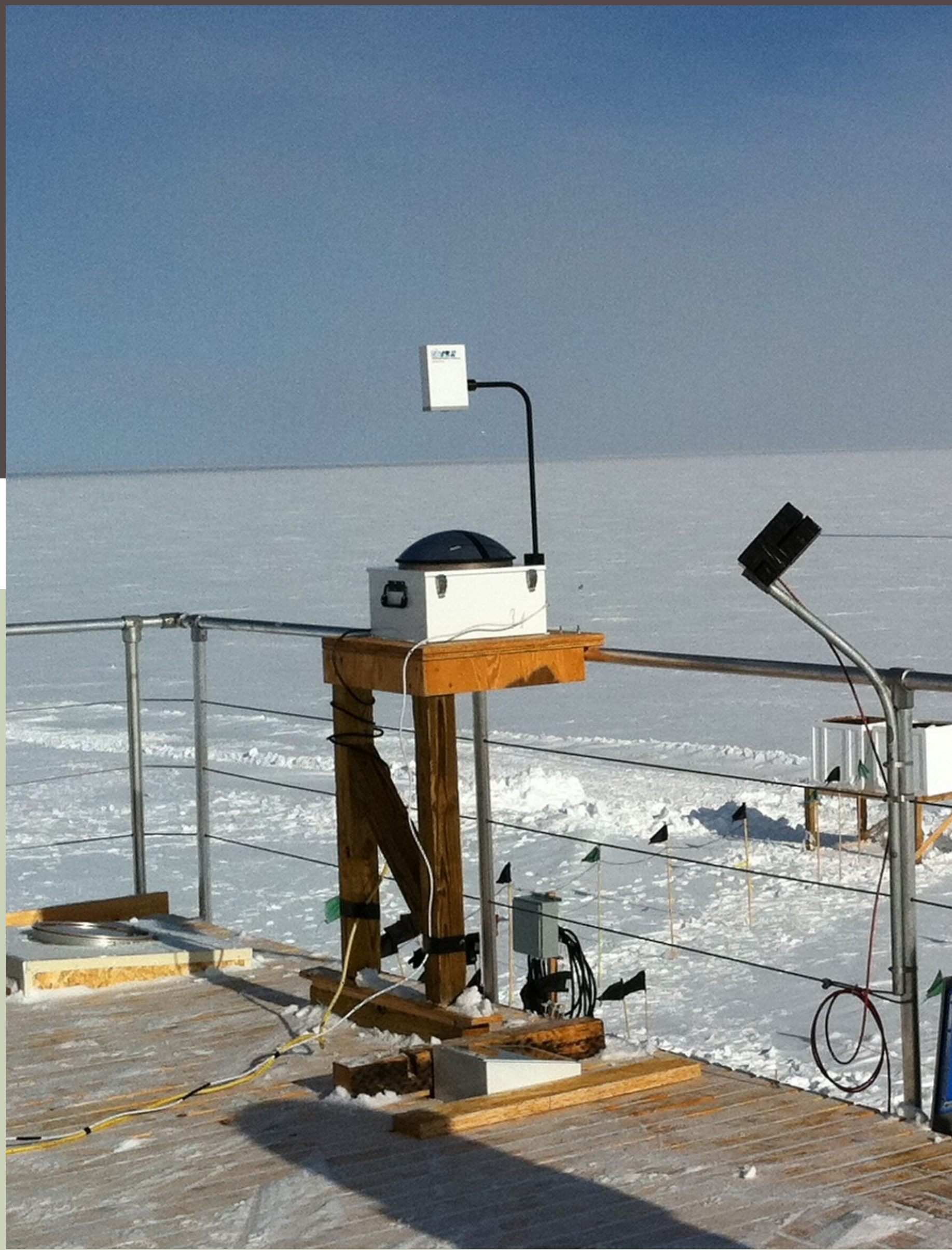
Contacts
 Project Lead: Matthew Shupe
 matthew.shupe@noaa.gov



Datagrams: Summit TSI: Total Sky Imager



Contacts
 Principal Investigator: Konrad Steffen
 konrad.steffen@wsl.ch
 Data Support: Sara Crepinsek
 sara.crepinsek@noaa.gov



File name: tsiYYYYMMDD.tar.gz
 ** These are archived photos for each given day **

Summit Data Center

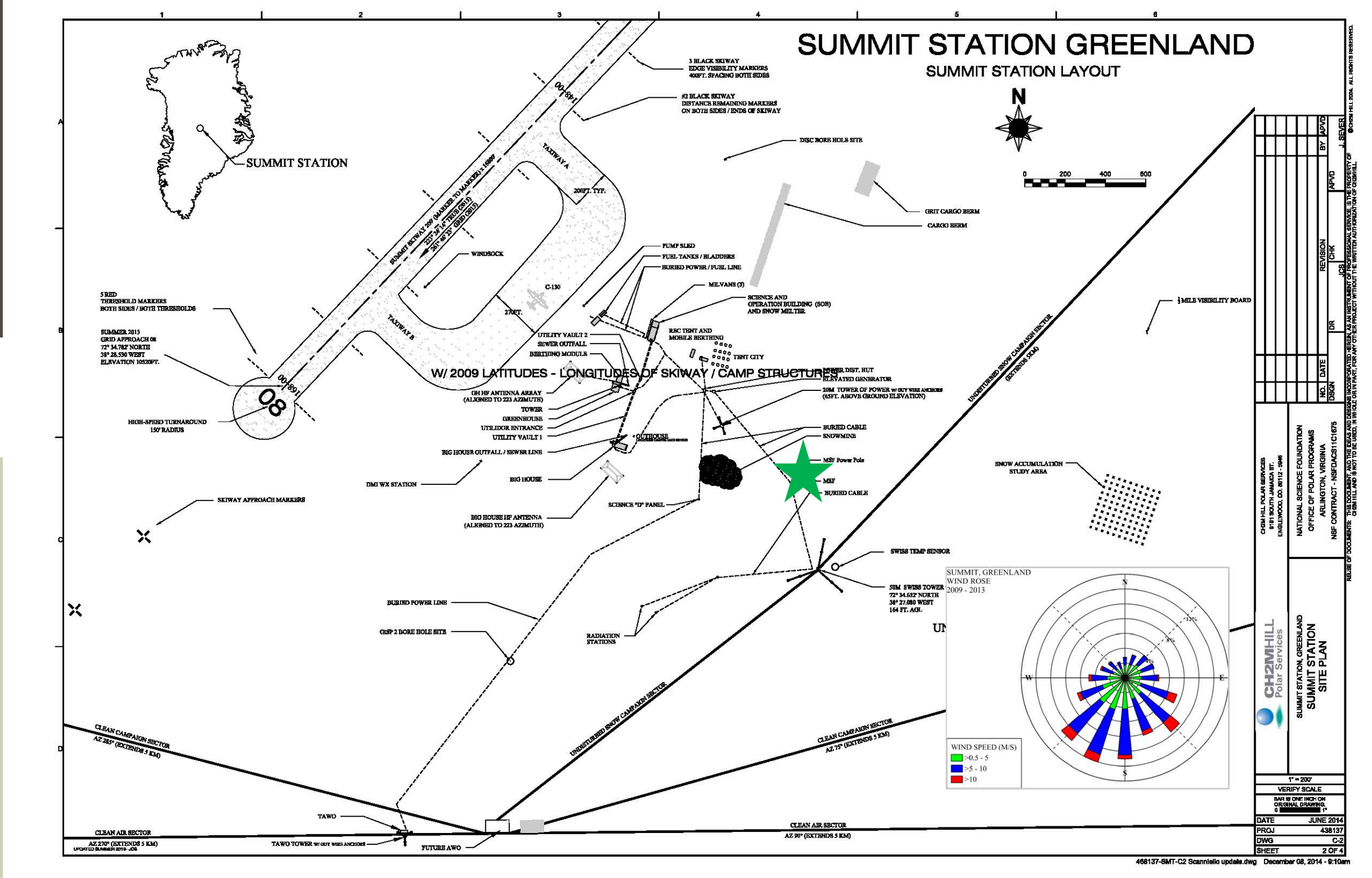
NOAA

FTP File locations at NOAA:
 From Summit Data Center to:
 ftp://ftp.etl.noaa.gov/psd3/arctic/summit/tsi/raw/

Processing

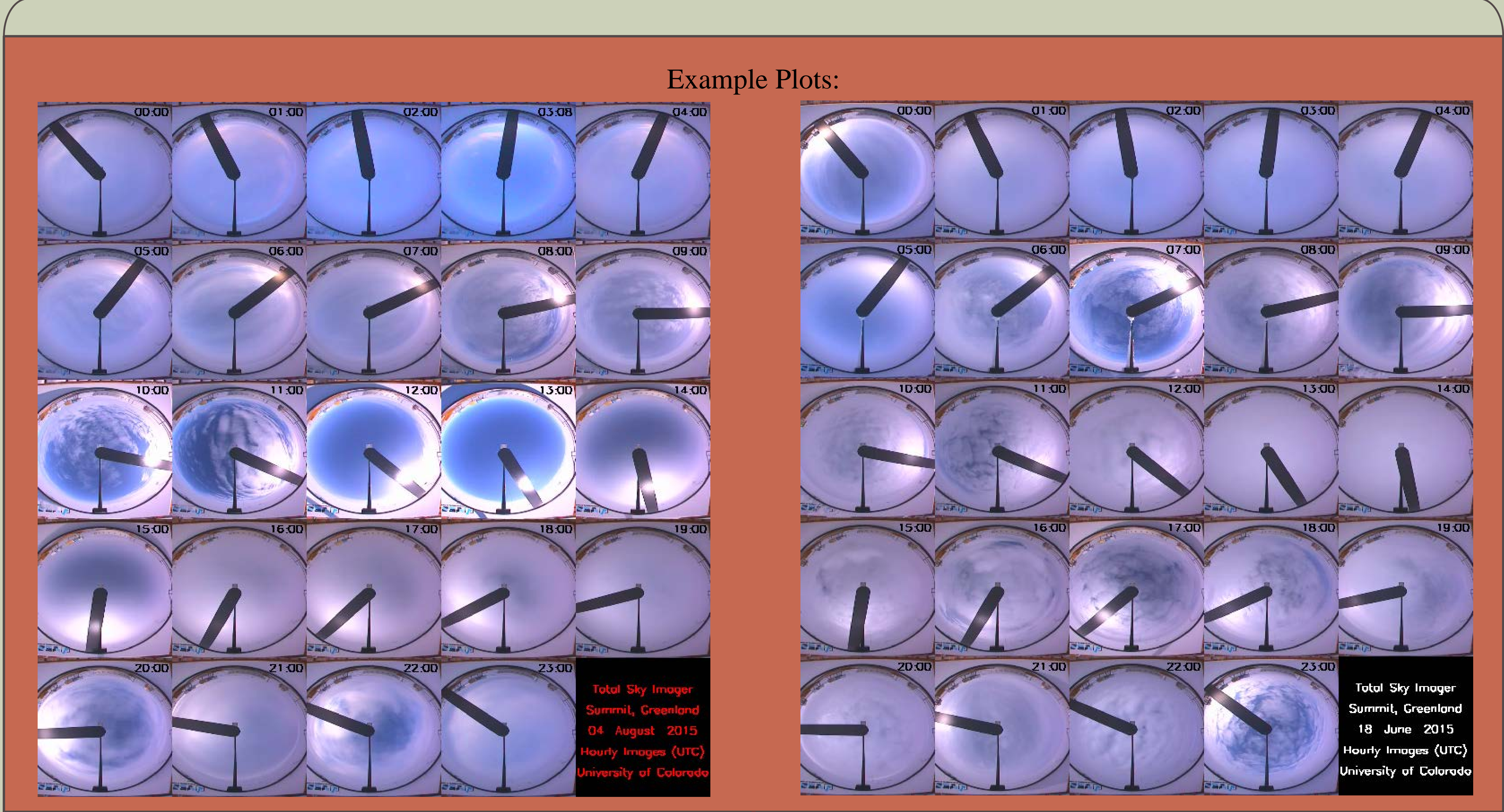
No processing necessary since the product is an image

Quicklooks



★ Indicates current location of instrument

Instrument Details	
Specifications	
Measurement	Hemispheric visual sky photographs
Serial #	
Instrument Manufacturer	
Type	
Location	On the roof of the MSF
Additional Corrections Applied (y/n/explain)	Only operational when daily temperatures remain above -30 degC for at least 18 hours per day (i.e. no winter operations)



Home:
<http://www.esrl.noaa.gov/psd/iasoa/>
 Data:
<http://www.esrl.noaa.gov/psd/iasoa/dataatagance>

IASOA Portal

Product

Product File:
<ftp://ftp.etl.noaa.gov/psd3/arctic/summit/tsi/quicklooks/>
<ftp://ftp.etl.noaa.gov/psd3/arctic/summit/tsi/movies/>