

DSS

South Carolina Department of Social Services



South Carolina
Annual Progress and Services Report
FFY 2012

Amended December 31, 2012

TABLE OF CONTENTS

I.	INTRODUCTION	4
II.	SERVICE DESCRIPTIONS	12
III.	CHILD AND FAMILY SERVICES PROGRAM IMPROVEMENT	61
IV.	COLLABORATION ACROSS THE CHILD WELFARE SYSTEM	65
V.	TECHNICAL ASSISTANCE AND OTHER PROGRAM SUPPORT	96
VI.	CONSULTATION AND COORDINATION BETWEEN TRIBES AND STATE.....	115
VII.	HEALTHCARE SERVICES.....	116
VIII.	DISASTER PLAN.....	117
IX.	FOSTER AND ADOPTIVE PARENT RECRUITMENT	119
X.	MONTHLY CASEWORKER VISITATION.....	139
XI.	ADOPTION INCENTIVE PAYMENTS.....	142
XII.	CHILD WELFARE WAIVER DEMONSTRATION ACTIVITIES.....	143
XIII.	QUALITY ASSURANCE SYSTEM	143
XIV.	INFORMATION SYSTEMS	148
XV.	SERVICES FOR CHILDREN UNDER THE AGE OF FIVE	156
XVI.	CHILD MALTREATMENT DEATHS.....	165
XVII.	CHILD ABUSE PREVENTION AND TREATMENT ACT (CAPTA) PLAN.....	167
XVIII.	CHAFEE FOSTER CARE INDEPENDENCE PROGRAM (CFCIP)	169
XIX.	STATISTICAL AND SUPPORTING INFORMATION	179
XX.	FINANCIAL INFORMATION.....	184

List of Appendices

- A. SC Foster Parent Bill of Rights**
- B. CFS 101, Parts I, II, and III**
- C. SCDSS Health Care Plan**
- D. SC AFCARS Improvement Plan**
- E. South Carolina Emergency Operations Plan**
- F. 2011 Citizen Review Panels Annual Report and SCDSS Response**

I. INTRODUCTION

Mission, Vision and Goals

SCDSS Vision

-
-

SCDSS Mission

-

Wildly Important Goals (WIGs) for FY 2012

- Increase “positive closures for families on welfare” 100% better than FY 2010 by June 30, 2012.

- Reduce the number of children who experience maltreatment within six months of an unfounded investigation of abuse and neglect from 4.3% (700) to no more than 2.8% (446) by September 30, 2012.
- Increase positive permanency for children in foster care 17 months or more by 50% better than last year (FY 2010) by June 30, 2012.

- Increase adoptions by 50% better than FY 2010 by June 30, 2012.

through Individual and Organizational Accountability

Major Achievements

Human Services

-

-

2.02%

-

-

nine

-

-

14.3%

-

-

740

-

-

•
•

Best Legal Practice Guide

Organization and Service Delivery System

- *Every child deserves a safe, loving and forever family.*
- *Only those children who cannot safely remain at home should enter care and not one more child after that.*
- *Foster care can save a life but it should never be a way of life for any child.*
- *We can get it right-- every service we provide should be accurate, timely and properly documented.*

“imperatives”

•

•

•

•

•

•

•

•

—

•

•

•

•

Leadership and Accountability Sessions

The Oz Principle: Getting Results through Individual and Organizational Accountability Switch: How to Change When Change is Hard, and Crucial Conversations.

The Oz Principle: Getting Results through Individual and Organizational Accountability Switch: How to Change When Change is Hard, and Crucial Conversations.
Four Disciplines of Execution

Four Disciplines of Execution

-
-
-
-
-
-
-
-
-

II. SERVICE DESCRIPTIONS

Child and Family Services Continuum

-
-
-

STEPHANIE TUBBS JONES CHILD WELFARE SERVICES (TITLE IV-B, PART1)

-
-
-
-

PROMOTING SAFE AND STABLE FAMILIES (PSSF) PROGRAMS (TITLE IV-B, PART2)

Family Preservation Services = 20%

Family Support Services = 20%,

Time-Limited Family Reunification Services = 20%

Adoption Promotion and Support Services = 20%

a.

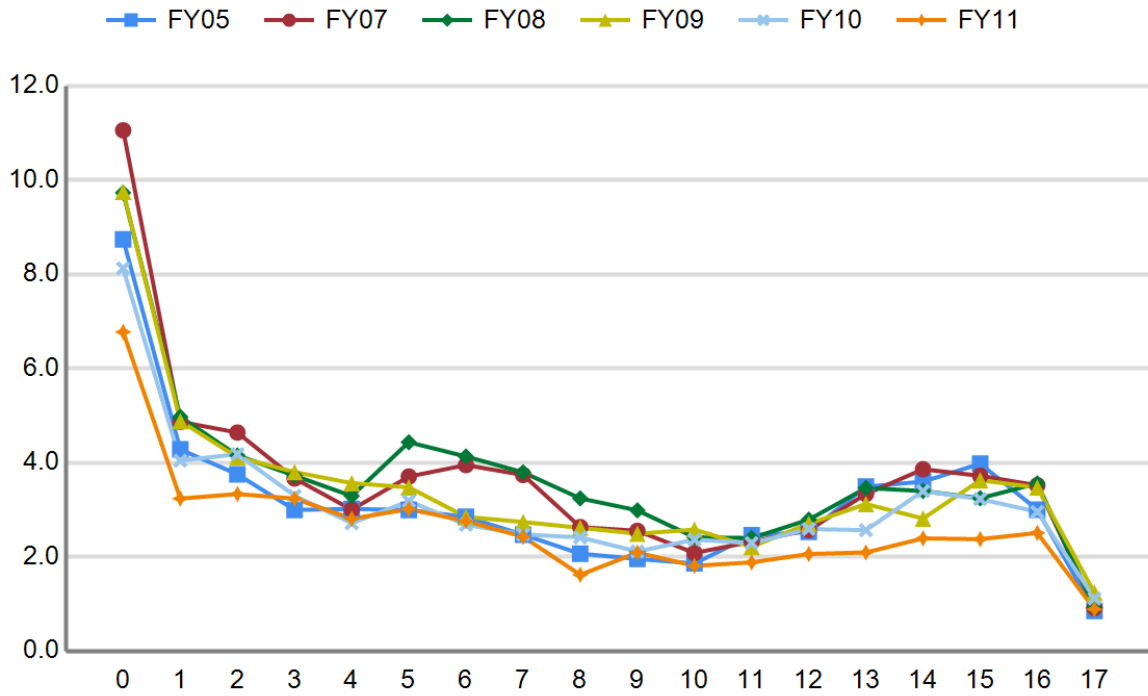
b.

c.

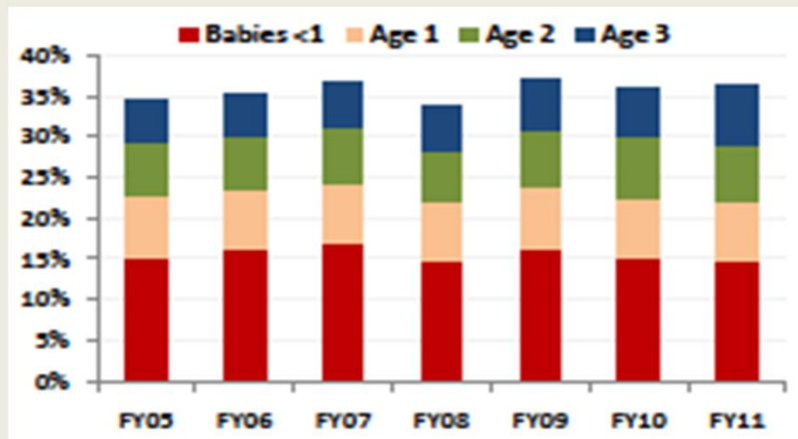
d.

Population at Greatest Risk of Maltreatment

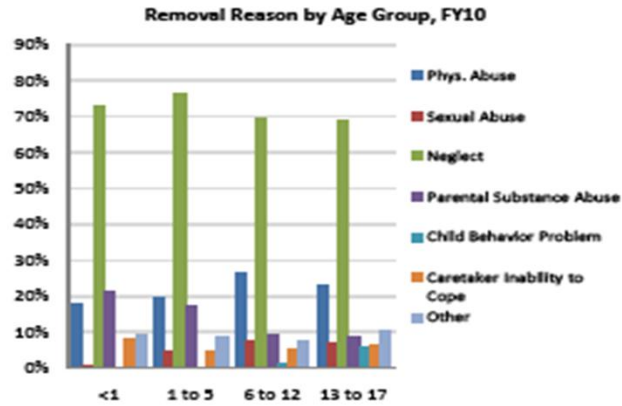
Entry Rate by Age Group



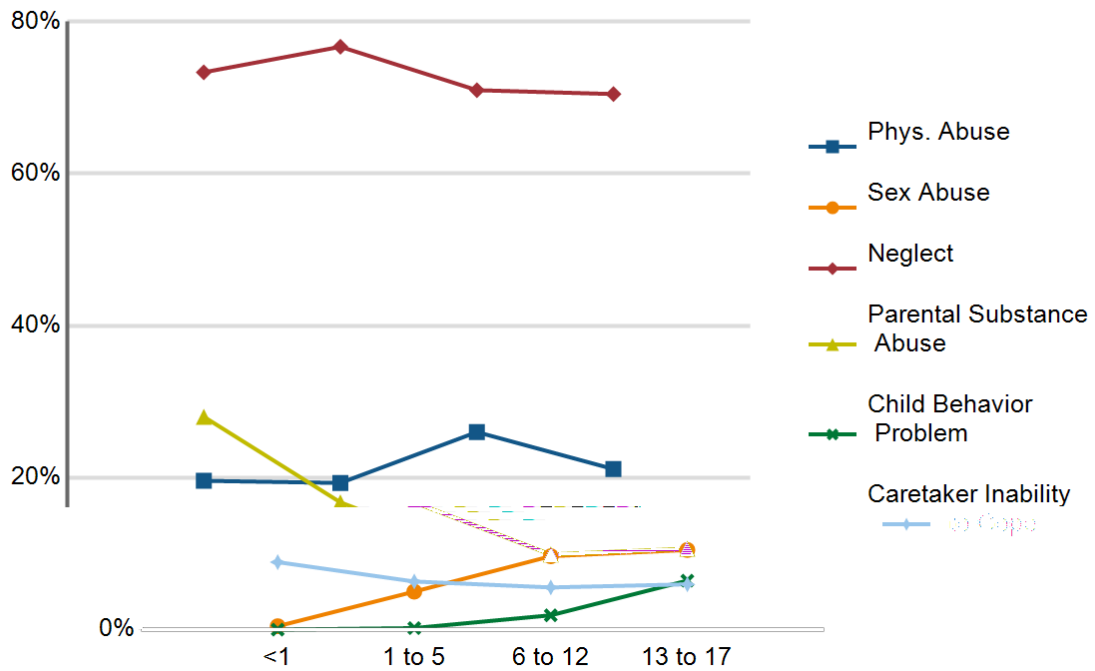
Children 0 To 3 Make Up Approximately 36% Of All Children Entering Care



Removal Reasons by Age Group, FY10



Removal Reason by Age Group, FY11



Children That Entered Foster Care in 2010 and Exited Early
 Reported by County Where Child Entered Foster Care
 (Accountability, Data and Research / Effective 20110801)

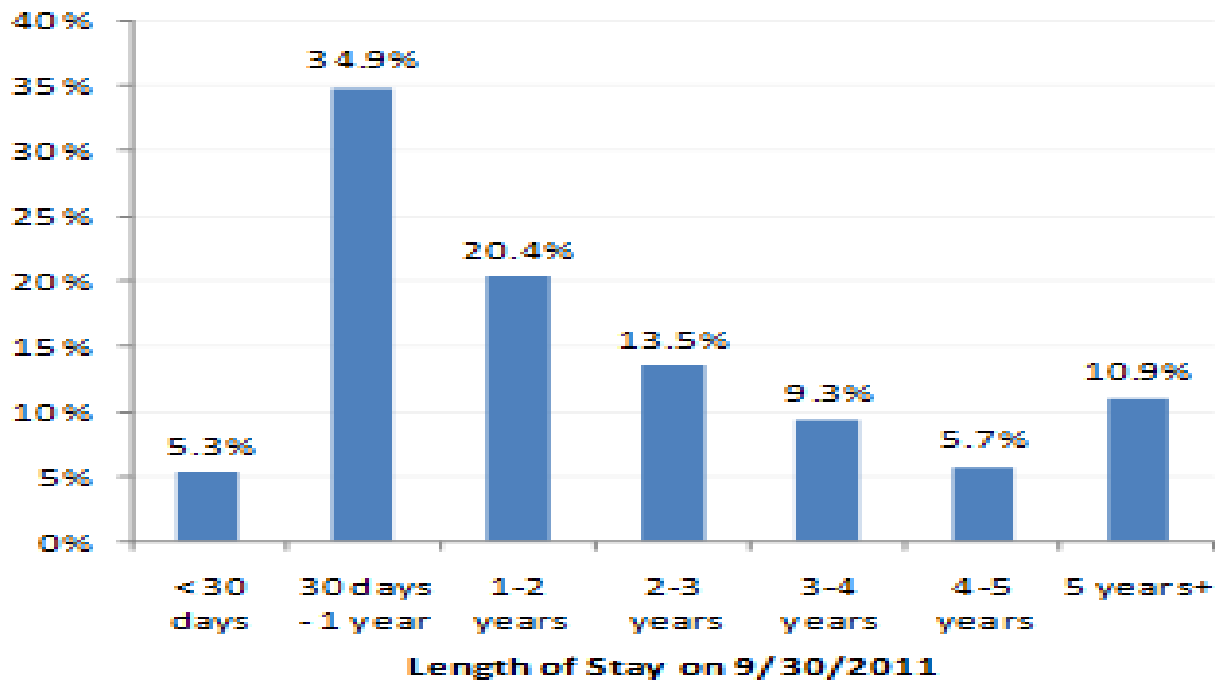
region	origin #	origin name	# that entered FC in 2010	Children in care				
				3 or fewer days	7 or fewer days	35 or fewer days	60 or fewer days	180 or fewer days
		region 1	1160	56	96	248	341	527
1	001	ABBEVILLE COUNTY DSS	22	1	2	6	15	18
1	004	ANDERSON COUNTY DSS	182	3	8	14	19	39
1	011	CHEROKEE COUNTY DSS	69	0	0	19	24	41
1	023	GREENVILLE COUNTY DSS	361	33	46	87	124	190
1	024	GREENWOOD COUNTY DSS	26	2	5	8	13	18
1	030	LAURENS COUNTY DSS	77	3	7	29	36	50
1	036	NEWBERRY COUNTY DSS	45	0	0	1	1	20
1	037	OCONEE COUNTY DSS	37	0	0	4	4	4
1	039	PICKENS COUNTY DSS	157	7	13	37	43	56
1	042	SPARTANBURG COUNTY DSS	184	7	15	43	62	91

		region 2	961	129	223	403	463	591
2	002	AIKEN COUNTY DSS	80	6	7	17	21	38
2	005	BAMBERG COUNTY DSS	16	1	1	1	1	5
2	006	BARNWELL COUNTY DSS	26	3	3	7	12	13
2	012	CHESTER COUNTY DSS	19	2	4	9	10	14
2	019	EDGEFIELD COUNTY DSS	13	0	1	3	9	9
2	020	FAIRFIELD COUNTY DSS	7	0	0	2	2	2
2	028	KERSHAW COUNTY DSS	49	8	8	15	19	25
2	029	LANCASTER COUNTY DSS	51	0	2	12	17	24
2	032	LEXINGTON COUNTY DSS	197	26	55	79	87	101
2	033	MCCORMICK COUNTY DSS	4	0	1	2	2	2
2	040	RICHLAND COUNTY DSS	351	63	118	191	208	263
2	041	SALUDA COUNTY DSS	9	3	3	5	5	6
2	044	UNION COUNTY DSS	29	0	0	7	12	14
2	046	YORK COUNTY DSS	110	17	20	53	58	75

		region 3	653	42	74	148	180	278
3	003	ALLENDALE COUNTY DSS	9	0	0	0	0	2
3	007	BEAUFORT COUNTY DSS	61	3	5	6	10	24
3	008	BERKELEY COUNTY DSS	103	11	16	28	28	37

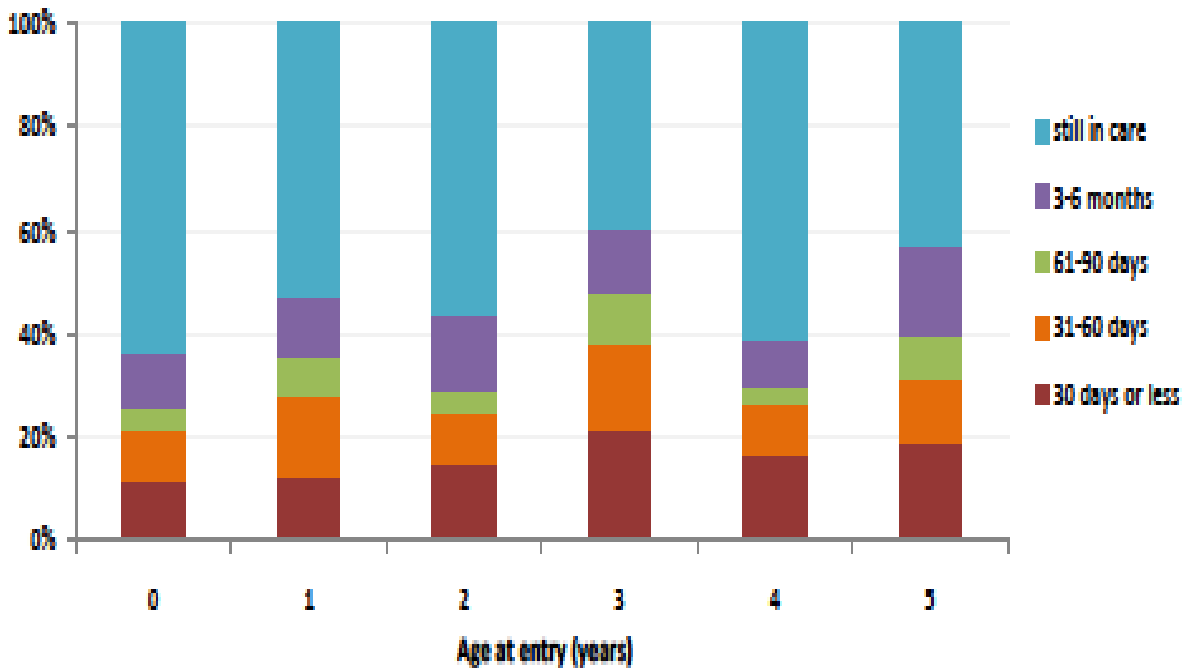
3	009	CALHOUN COUNTY DSS	11	0	1	1	2	4
3	010	CHARLESTON COUNTY DSS	263	13	28	62	67	112
3	015	COLLETON COUNTY DSS	36	0	0	1	2	4
3	018	DORCHESTER COUNTY DSS	69	7	16	26	31	44
3	025	HAMPTON COUNTY DSS	13	0	0	1	1	2
3	027	JASPER COUNTY DSS	11	0	0	4	6	8
3	038	ORANGEBURG COUNTY DSS	77	8	8	19	33	41
		region 4	703	33	56	188	235	330
4	013	CHESTERFIELD COUNTY DSS	79	8	8	28	30	36
4	014	CLARENDON COUNTY DSS	22	7	7	12	12	12
4	016	DARLINGTON COUNTY DSS	109	2	8	40	46	62
4	017	DILLON COUNTY DSS	44	1	1	9	15	18
4	021	FLORENCE COUNTY DSS	91	0	0	0	8	20
4	022	GEORGETOWN COUNTY DSS	30	2	2	6	8	14
4	026	HORRY COUNTY DSS	179	9	22	55	66	85
4	031	LEE COUNTY DSS	15	0	0	5	5	10
4	034	MARION COUNTY DSS	71	1	5	19	23	39
4	035	MARLBORO COUNTY DSS	25	2	2	3	6	13
4	043	SUMTER COUNTY DSS	32	1	1	11	14	18
4	045	WILLIAMSBURG COUNTY DSS	6	0	0	0	2	3

**Distribution of Children In Care at Year End,
by Length of Stay At Year End (9/30/2011)**



Short Stayers (FY11)

About 43% of all children who entered between the ages of 0 and 3 left care within 6 months.



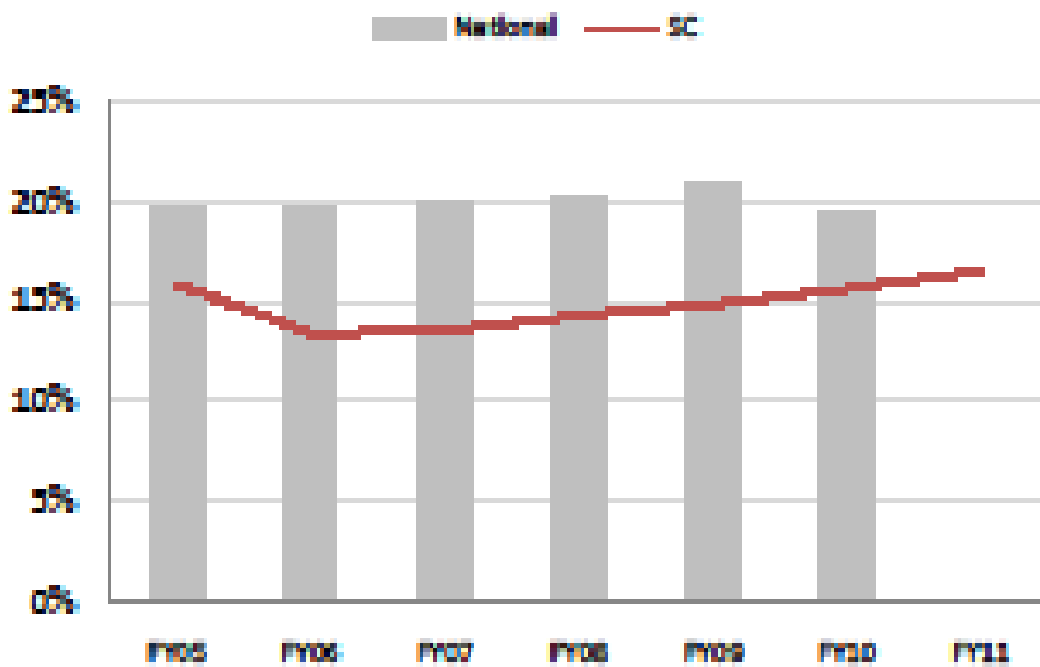
Child Care Services

Head Start

Children's Trust

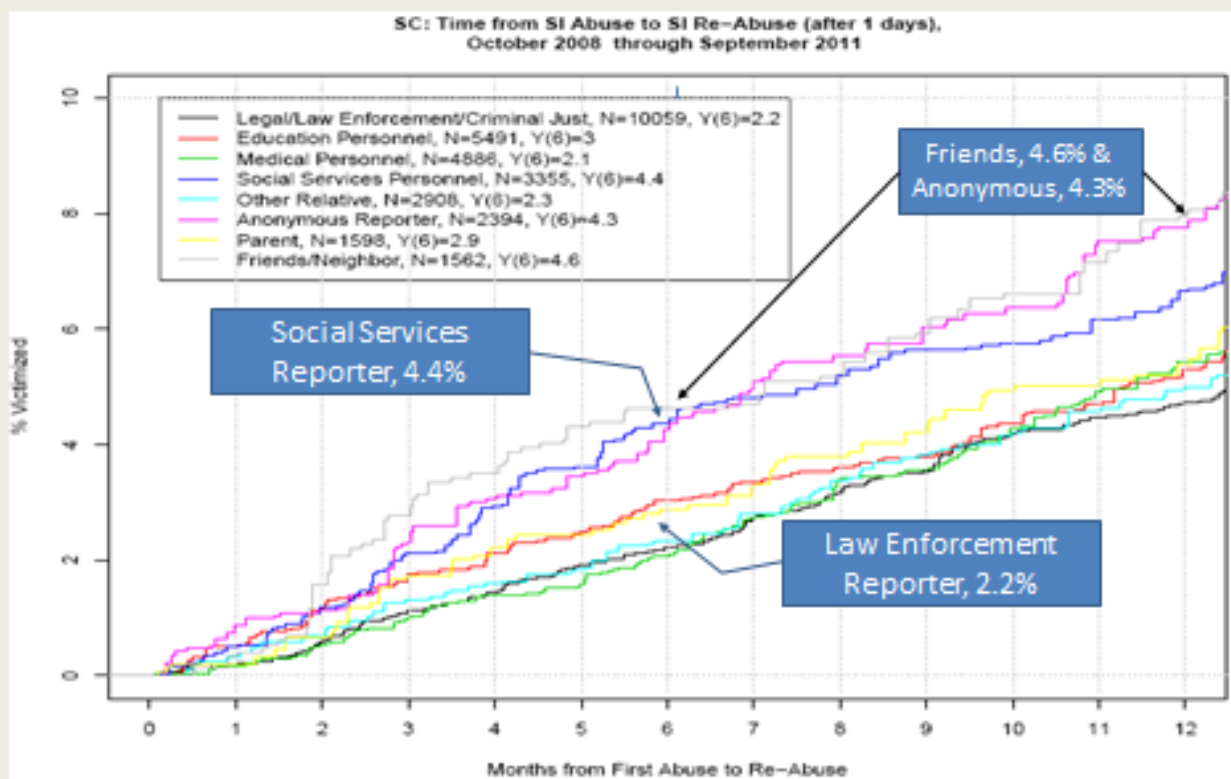
BabyNet Referrals)

Percent of Children Entering Care as Re-Entries



Risk of Recurrence Differs by Initial Reporter

Reports by friends and anonymous reporters more likely to result in recurrence



In-Home Prevention and Intervention Services

Child Protective Services

Child Care Services

Prevention Services

-
-
-

Child Abuse and Neglect Prevention and Intervention (Child Protective Services)

Child Protective Services (CPS) Intake

Appropriate Response

-
-
-

CPS Intake Accomplishments

Statewide CPS Intake Decisions FFY 2011 and the first six months of FFY 2012

FFY in which Referral Decision Was Made	Total Referrals for which a Decision was Made	Decisions for Referrals Received			
		Accepted/ Approved	Information and Referral Only	Not Accepted/ Denied	Referred to Economic Services

free

Child Protective Services to Children in a Child Care Facility

-

-

OHAN	FY 06-07		FY 07-08		FY 08-09		FY 09-10*		FY 10-11**	
Total # of Referrals	894		834		968		990		781	
State Total	572	47	430	34	537	51	433	29	157	19

Accountability, Data, and Research (data from CAPSS on November 1, 2011)

In-Home Prevention and Intervention (CPS Treatment) Services

CPS Treatments - Open Treatment Services

From 07/01/2012 To 07/31/2012 (Run date 7/29/12)

	Number of Open CPS Treatment Services	Services with No Activity Number	Percent	Children In An Open CPS Treatment Service	Children with no Face to Face Number	Percent
Region 1	1, 541	439	28.49%	3, 240	1, 632	50.37%
Region 2	626	80	12.78%	1, 338	353	26.38%
Region 3	879	235	26.73%	1, 972	865	43.86%
Region 4	625	106	16.96%	1, 394	487	34.94%

	Number of Open CPS Treatment Services	Services with No Activity Number	Percent	Children In An Open CPS Treatment Service	Children with no Face to Face Number	Percent
Region 5	743	233	31.36%	1,654	757	45.77%
State Totals	4,414	1,093	24.76%	9,598	4,094	42.65%

Safety Roundtables

Family Engagement Strategies

FGDM Accomplishments

-
-

-

-

-

•

•

•

•

•

•

○

○

○

○

○

○

•

•

•

•

•

Both items received a mean score of 4.5 out of 5.0 possible points.

•

•

•

attended the conference

•

•

•

○

○

○

○

•

•

•

•

•

○

○

○

○

•

○

○

○

○

○

○

•

○

○

○

○

○

○

○

○

○

○

○

○

○

○

○

○

-
-
-
-
-
-
-
-
-
-
-
-

●

●

●

●

●

●

●

	FFY 2012 Outcome Measures (Percent of Cases Reviewed for Which Item Was Rated as Strength)	FFY 2012 QA Results for Quarter 1	FFY 2012 QA Results for Quarter 2	FFY 2012 QA Results for Quarter 3

-
-
-
-

-
-
-
-

-



-

-

-

-

Family/Domestic Violence Program

Source:

Proposal Process

Planned Expansion for 2013

-
-
-
-
-
-
-

-
-
-
-
-
-
-

-
-
-
-
-
-
-
-
-

-
-
-
-

-

○

-

-

-

-

-

-

-

-

-

-

-

-

-

Funding source
Venue/setting of training
Duration of Activity
Who was the audience and # of attendees

-
-
-
-

-

-

-
-
-
-

Foster Care and Permanency

-
-
-

-
-

Foster Parent Communication Plan

-
-
-
-
-
-
-
-
-
-
-

Relative Placement

The Department of Social Services is required to notify you as SCDSS has been told that you are a relative of this child. If you would like to be considered for placement or be considered for participation in the care of this child, please contact us immediately by calling or emailing the caseworker as indicated below.

If you are a relative and want to have this child live with you, you may want to consider becoming a licensed foster parent. The enclosed brochure explains how to do this and the benefits that come with licensure. In addition, there is information on the agency's website at www.dss.sc.gov.

Children in SCDSS custody need placement while their parents are working on a court ordered plan that must be completed for the child to return home. Most children return home to their parents. For children who cannot return home, the Department will be looking for a permanent home to last to adulthood for the child.

If we do not hear from you timely, we will be unable to include you in planning for the child. Failure to act promptly may jeopardize your chance to have the child come live with you or for you to participate in the care of the child.

SC Connecting for Kids

-
-

-
-
-
-
-

Connecting for Kids Grant: Finding Families Accomplishments

Connecting for Kids Grant: Kinship Navigator Accomplishments

Connecting for Kids Service Expansion

Connecting for Kids CFSR Areas Needing Improvement

○

○

Family Finding

-
-
-

Description:
Funding source
Venue/setting of training
Duration of Activity

Sibling Connections

-
-
-

-

if siblings must be separated:

-

-

-

-

Education of Foster Children



-

-

Permanency Roundtables

evaluating practice and policy with assistance from the NRC Judicial and Legal and Permanency and Fostering Connections specifically on operationalizing concurrent planning in order to quickly assess the permanency goal for the children in foster care to include reunification and adoption as a permanent goal in Spartanburg County

Background

•

•

•

Incorporation of PRTs into the CFSR PIP

Adoption and Post-Adoption Services

Adoption Services (adoption promotion, support and post-adoption services)

Adoption Subsidy Assistance

-
-
-
-
-
-

○

○

○

○

○

○

○

○

○

○

○

○

Adoption Tax Credit

III. CHILD AND FAMILY SERVICES PROGRAM IMPROVEMENT

Child and Family Services Program Improvement Plan

PIP Implementation Lead Innovation County Assignments	

-
-
-

Contracted Services

“From funds appropriated to the department for child welfare, the department shall conduct a study with provider and stakeholder participation to determine the feasibility of child welfare outsourcing initiatives. The study should include, but not limited to, a review of other states contract monitoring and quality assurance models for private providers, to include performance measures and outcomes; a description of all services which might be effectively outsourced to include case management; an analysis of state procurement requirements; an analysis of cost savings or potential costs avoided that may accrue to the state; and a review of provider and state system data measures which can monitor private provider accountability and

compliance and assist rate setting. The department shall provide a report of the finding to the Governor, the Chairman of the Senate Finance Committee and the Chairman of the House Ways and Means Committee no later than January 31, 2011."

-
-
-

-

-

-

-

-

-

-

-

-

-

-

-

-

-

IV. COLLABORATION ACROSS THE CHILD WELFARE SYSTEM

-
-
-
-
-

APSR Collaboration

-
-
-
-

-
-
-
-
-

Prevention Collaboration

Children’s Trust of South Carolina

Strengthening Families

Baby Net/First Steps

Intervention Collaboration

CPS Collaboration

OHAN Stakeholders and Collaboration

Family Group Conferencing Collaboration

•

•

•

•

•

•

Description:	
<i>Custodial Parent</i>	<i>Engaging the Non-</i>
Funding source	

Venue/setting of training
Duration of Activity
Who was the audience and # of attendees

Domestic Violence Collaboration

Department of Education

Immigrant Victim Network

-
-
-
-

Faith Leaders Advisory Council

-
-
-

SC Network of Children's Advocacy Centers

South Carolina Association of Children’s Homes and Family Services

2011

February 2	Reid Lehman, MBA
February 2	Timothy J. Duncan, MS, MPA, and Dennis Erskine, BA
February 2	Becky Butler, M.A.
February 2	Gaye Allen-Cook, B.S., M.A., LPC
February 2	Toni Jones, MSW, and Monique Mitchell, Ph.D.
February 3	Patton McDowell, MBA
February 3	Caroline Davis, M.Ed.
February 3	Louise Cooper
February 3	Becky Butler, M.A.
February 3	Joel Weintraub, M.Ed.
February 3	MSW Kenston J. Griffin,
February 3	MA John T. Wilson,
February 3	Michael B. Kelly, M.A., Ph.D.
February 3	Scurry, LMSW Kelli
February 3	Gaye Allen-Cook, B.S., M.A., LPC

	...
June 15	Hagood Tighe, Esq.
June 15	Drake Evans
June 16	Anthony R. "Tony" Keck
June 16	Rhonda Victor, PHR
June 16	Lillian B. Koller, J.D.
June 16	Margaret Barber
June 16	Jeff Bormaster, MSW
June 17	Jeff Bormaster, MSW
	Jeanne Ferguson, MSSW, LISW, Manager, Family Assessment Response, American Humane Association
	Henry O. Whiteside, Ph.D., Lutra Group, Salt Lake City, Utah
	Rita Bostick, M.A., LPC, Triple P America
	Ricky Barr, SC Center for Fathers and Families Children's Home Society of North Carolina, Greensboro, NC

	<i>Jeff Bormaster, MSW</i>

2012

<i>February 28, 2012</i>	<i>Richard Barr, M.A.</i>
<i>February 28, 2012</i>	<i>Robin Kubler, Keonte Jenkins-Davis, and John Connery</i>
<i>February 28, 2012</i>	<i>Tim Duncan, Christy Jamison, Rhonda McCurry, Deborah McKelvey, and Nichole Pierce</i>
<i>February 29, 2012</i>	<i>Kim Preston (PRO-Parents), Terri Pope (IL), Walter Simmons (Palmetto Youth Connections), and Cherie Walker (GAL)</i>
<i>February 29, 2012</i>	<i>Rev. Neal Jones, M.Div., Psy.D.</i>
<i>February 28, 2012</i>	<i>Cynthia Brock, MBA</i>
<i>February 28, 2012</i>	<i>Jerry Allred, MSW, Laura Erickson, and Roger Smith, Ph.D.</i>
<i>February 28, 2012</i>	<i>Steve Dean, M.Ed., and Tom Foley, LMSW</i>
<i>February 28, 2012</i>	<i>Karen L. Luchka</i>
<i>February 28, 2012</i>	<i>Jessica Hanak Coulter, MSW</i>
<i>February 28, 2012</i>	<i>Tammy Bryant, MSW, and Chris Rollison</i>
<i>February 29, 2012</i>	<i>Natalie Fryar, M.Ed., and Leslie Wilson</i>
<i>February 29, 2012</i>	<i>John Holler, M.Div., Ed.S.</i>
<i>February 29, 2012</i>	<i>Richard Barr, M.A.</i>
<i>February 29, 2012</i>	<i>Ed Young, Stephanie O'Cain, John B. Merritt, Mark Hobbs, Priscilla C. Green</i>
<i>February 29, 2012</i>	<i>Ethel Douglas Ford, Genita Snipes, and Gail Washington, M.A.</i>
<i>February 29, 2012</i>	<i>Niki Chapman, LMSW, Deborah Hanna, M.Ed., and Anthony Houston</i>
<i>February 29, 2012</i>	<i>Kathryn Kendrick, LMSW, and Debbie McKelvey</i>

<i>February 29, 2012</i>	<i>Kathleen McLean-Titus, MSW, and Terri Pope, MSW</i>
	<i>Ed Roper Van Henson</i>
	<i>Bryan Fox, M.Ed., Ph.D., Laura L. Truesdale, LISW-CP</i>
	<i>Rene Sharkey</i>
<i>June 19</i>	<i>Rhett Mabry</i>
<i>June 19</i>	<i>William Martin, BSW, MHSA</i>
<i>June 20</i>	<i>Mark Hammond, South Carolina Secretary of State)</i>
<i>June 20</i>	<i>Charles C. Weathers, The Weathers Group</i>
<i>June 20</i>	<i>Karen Luchka, Fisher & Phillips, LLP</i>

Legend:

Regional Forums

“Sponsor a College Kid” (Pack a SACK Project)

Permanency Collaboration

Connecting for Kids Collaboration

Family Finding Collaboration

Recruitment Collaboration

Foster Care Review Board (Governor's Office)

Foster Care Reviews

•

•

•

•

•

•

•

•

•

•

•

•

•

•

•

•

•

•

•

-

-

-

Description of Services

Outcome:

Outcome:

Outcome:

Outcome:

Outcome:

Outcome:

Outcome:

Outcome:

Outcome:

Outcomes:

Outcomes:

Outcomes:

Outcome:

Outcome:

Outcome:

South Carolina Foster Parent Association

- **Independent Living Showers.**
- **“Sponsor a College Kid” (Pack a SACK Project)**
- **On the Road Again.**
- **Laptop Bundles.**
- **Striving for Excellence.**
- **Teen Recognition.**
- **Smart Summers, Strong Kids.**

:

- *Internet.*

- *Public Relations*

- *Other Advertising Vehicles*

Guardian ad Litem Program for SC (Governor's Office)

Permanency Roundtables Collaboration

Coker College

Columbia Urban League

Medical University, Palmetto Richland and Palmetto Easley Hospitals

Pro-Parents

Adoption Collaboration

South Carolina Heart Gallery

Inter-Country Adoptions

Adoption Assistance Collaboration

Other Collaboration

SC Citizen Review Panels

-
-
-

Center for Child & Family Studies, College of Social Work, USC

Child Fatality Review Teams/Health and Safety Councils

SCDSS/DJJ Breakthrough Series

Law Enforcement Protocols

Description:
Funding source
Venue/setting of training
Duration of Activity
Who was the audience and # of attendees

State Department of Mental Health

Agency and Youth Connections – Youth Involvement Opportunities

Advisory Committees

Independent Living Advisory Committee

The Youth Advisory Committee – GOALL (Go Out and Learn Life)

The SC NYTD Advisory Panel.

Youth Advisory Committees—Local Boards

The SC Foster Parent Association

Limestone College

Collaboration with Courts

Children's Law Center, USC

Children's Justice Act Task Force

crossover

youth

Dually-involved youth

V. TECHNICAL ASSISTANCE AND OTHER PROGRAM SUPPORT

4 Disciplines of Execution.

Updates to Training Plan

Mandated Reporter Training provided by Children's Law Center

USC Children's Law Center Training

-
-
-
-

Funding source for Children's Law Center

Child Welfare Training

Description:
Funding source
Venue/setting of training
Duration of Activity
Who was the audience and # of attendees

Training Cost Allocation

SC DEPARTMENT OF SOCIAL SERVICES
2012-2013 TRAINING BUDGET FOR APSR

FUNDING SOURCE	(A) STAFF DEVELOPMENT & TRAINING	(B) USC COLLEGE OF SOCIAL WORK	(C) (A)+(B) SUBTOTAL PHASE I - PHASE IV	(D) CHILDREN'S LAW CENTER CONTRACT	(E) FOSTER PARENT TRAINING	(F) ADOPTIVE PARENT TRAINING	(G) (E)+(F) SUBTOTAL FOSTER / ADOPTIVE TRAINING	(H) SC PROFESSIONAL DEVELOPMENT CONSORTIUM	(I) EXTERNAL LEGAL COMMUNITY	(J) (C)+(D)+(E)+(F)+(H)+(I) TOTAL ALL TRAINING
IV-B, PART 1	197,809	-	197,809	-	-	-	-	-	-	197,809
IV-B, PART 2	59,888	-	59,888	-	835,148	214,500	1,049,648	-	-	1,109,536
CAPTA	-	114,784	114,784	-	-	-	-	-	-	114,784
CHAFEE	-	146,877	146,877	-	78,160	-	78,160	-	-	225,037
IV-E FC/ADOPTION ASSISTANCE	-	517,056	517,056	418,599	25,200	-	25,200	-	260,024	1,220,879
SSBG	-	854,751	854,751	785,205	49,500	-	49,500	-	-	1,489,456
TANF-EA	-	1,478,093	1,478,093	418,102	-	-	-	-	-	1,896,195
OTHER FUND	-	455,387	455,387	19,024	-	-	-	-	-	474,411
TOTAL	647,697	2,888,068	3,535,765	1,631,930	909,708	214,500	1,155,938	260,024	260,024	5,717,017

Program-Specific Support

CPS Program Support

Training

-

-

Technical Assistance

-

-

-

-

Description:
Funding source
Venue/setting of training
Duration of Activity
Who was the audience and # of attendees

--

Description:
Funding source
Venue/setting of training
Duration of Activity
Who was the audience and # of attendees

Family Group Conferencing (FGC) Program Support

Training

-

Technical Assistance

-

-

-

-

-

Description:

Funding source
Venue/setting of training
Duration of Activity
Who was the audience and # of attendees

Description:
Funding source
Venue/setting of training

Family Violence Prevention Program Support

Connecting for Kids Program Support

Training

-

Technical Assistance

-

-

Permanency Roundtable (PRT) Program Support

Technical Assistance

Training

Description:
Funding source
Venue/setting of training
Duration of Activity
Who was the audience and # of attendees

Adoption Assistance Program Support

Training

-

Technical Assistance

-

-

VI. CONSULTATION AND COORDINATION BETWEEN TRIBES AND STATE

A Native Pathway to Adulthood

VII. HEALTHCARE SERVICES

VIII. DISASTER PLAN

State Disaster Plan for Foster Parents Overview

-
-
-
-
-
-
-
-
-

•

•

SCDSS State Office Disaster Recovery Contacts

Primary Contact:

Title:

Office Phone:

Work Cell Phone:

Pager:

Email:

Secondary Contact:

Title:

Office Phone:

Work Cell Phone:

Pager:

Email:

Other Contact:

Title:

Office Phone:

Work Cell Phone:

Pager:

Email:

Other Contact:

Title:

Office Phone:

Work Cell Phone:

Pager:

Email:

Other Contact:

Title:

Office Phone:

Work Cell Phone:

Pager:

Email:

Other Contact:

Title:

Office Phone:

Work Cell Phone:

Pager:

Email:

IX. FOSTER AND ADOPTIVE PARENT RECRUITMENT

Foster and Adoptive Parent Recruitment Strategies

•

•

•

•

-

-

-

Foster Parent Training

-

-
-
-
-
-
-
-
-

-

-

-

-

-

-

-

-

-

-

-
-
-

-

Description:					
Funding source					
Venue/setting of training					
Duration of Activity					
Who was the audience and # of attendees					

-
-
-

Description:
Funding source
Venue/setting of training
Duration of Activity

Who was the audience and # of attendees

•

-
-
-
-
-
-
-
-

•

-
-
-

•

-
-
-

•

-
-
-

• ○

○
○
○

•

○
○

○

○

○

•

○
○
○

•

○

○

○

•

○

○

○

•

○

○

•

○

○

•

○
○
○
○

○

•

○
○
○
○
○
○

•

○

○
○

○

○

○
○

•

○
○

○
○

•

○
○
○
○

•

○

• ○
○

○
○
○
○

• ○
○

○
○

• ○
○

○
○
○
○
○

• ○
○
○
○
○

○
○

• ○

○
○

○

○
●

○
○
○
○
○

●
●
●

•

•

-
-
-

•

-
-
-

Training Title	Training Provider	Total # of Participants

Pre-Service Training for Resource Families

Other SCFPA Supports
Independent Living Showers .

Laptop Bundle.

Striving for Excellence Award.

SCFPA Teen Recognition.

SCFPA Scholarship

Smart Summers, Strong Kids

-
-
-
-

On the Road Again.

Pack A Sack.

Child-Specific Recruitment for Children Who Are Legally Free for Adoption

-
-
-
-
-
-
-
-
-
-
-
-
-
-
-
-
-
-
-
-
-
-

<p>Description: SCFPA Annual Conference and ongoing statewide trainings</p>
<p>Funding source</p>

Venue/setting of training

Duration of Activity

Multiethnic Placement Act (MEPA)

-
-
-
-
-
-
-
-

-
-
-

MEPA Stakeholder/Collaborations:

MEPA Training/TA:

X. MONTHLY CASEWORKER VISITATION

Monthly Caseworker Visit Data

Face-to-face Contacts with Children in Foster Care October 1, 2010 through September 30, 2011

Effective December 1, 2011 / Accountability, Data, and Research

# Children	# Visited Every Month	% Visited Every Month	Visit Months	Visit Months in Home	% of Visit Months in Home

- *two push reports.*

- *Batch Report # 180,*

Use of Caseworker Visit Formula Grants

-
-
-

•

•

•

•

•

•

•

•

•

•

•

•

•

•

Description:
Funding source
Venue/setting of training
Duration of Activity
Who was the audience and # of attendees

XI. ADOPTION INCENTIVE PAYMENTS

-
-
-
-

XII. CHILD WELFARE WAIVER DEMONSTRATION ACTIVITIES

XIII. QUALITY ASSURANCE SYSTEM

The state department shall conduct, at least once every five years, a substantive quality review of the child protective services and foster care programs in each county and each adoption office in the State. The county's performance must be assessed with reference to specific outcome measures published in advance by the department.

-
-
-
-

quantitative

qualitative

—

—

—

Accomplishments/Progress

-
-
-

Service Expansion/Improvement

-

-
-
-

Quality Assurance Training

Quality Assurance Technical Assistance

XIV. INFORMATION SYSTEMS

Department of Social Services Division of Information Services Plans

Division of Human Services Dashboards

Legal Events and Actions

- -
 -
 -
 -
 -
- -
 -
 -
-
-

Appropriate Response Dashboard

-
-
-
-
-
-
-

Next Steps

-
-

Agency Security

Security Focus

-

-

Infrastructure Focus

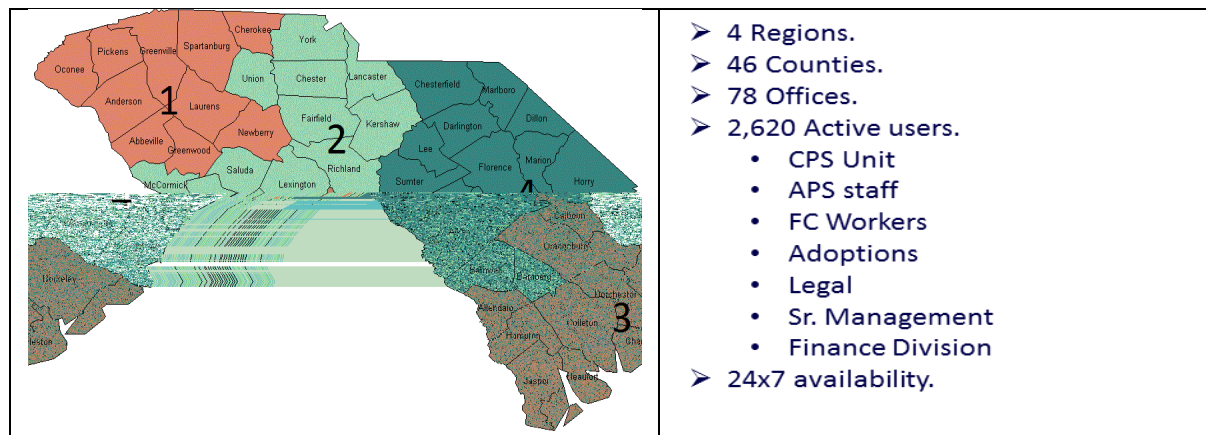
-

-

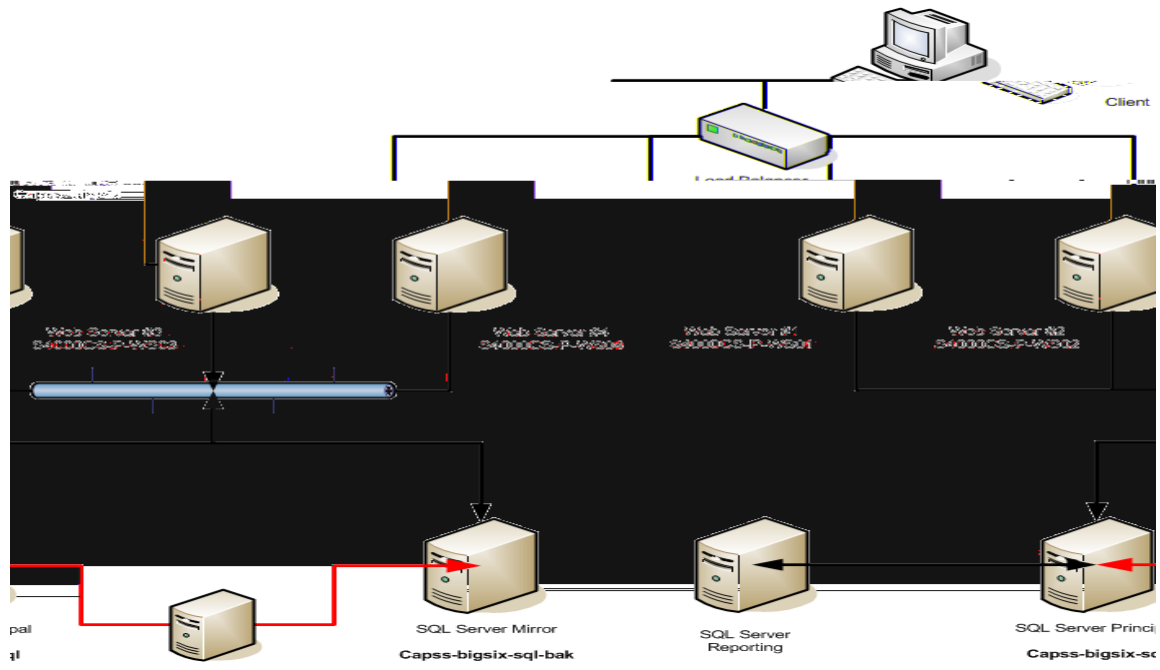
-

Disaster Planning

Department of Social Services Statewide Automated Child Welfare Information System (SACWIS)



CAPSS Hardware Configuration for Big 7 Release



SACWIS Review

AFCARS Improvement Plan

AIP tasks identified and accomplished thus far:

-

•

•

•

•

•

•

-

MTS Integration

Child Support Interface

-
-
-

Legal Case Management System (LCMS)

Trainings/enhancements that occurred between July 2011 and June 2012

-
-
-
-
-
-
-
-
-
-

Planned enhancements/trainings between July 2012 and September 2013

-

-

-

CAPSS/LCMS Support

XV. SERVICES FOR CHILDREN UNDER THE AGE OF FIVE

Developmentally-Appropriate Services for Children under Age 5

Policy Requirements

-

-

-

-

-

-

- _____

- _____

- _____

-

-

-

-

- _____

- _____

-

-

-

-

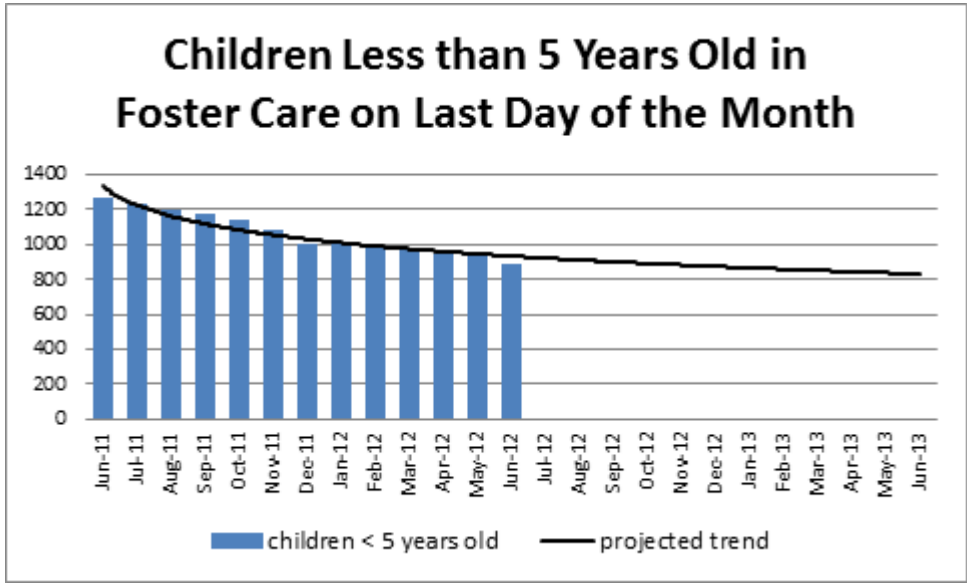
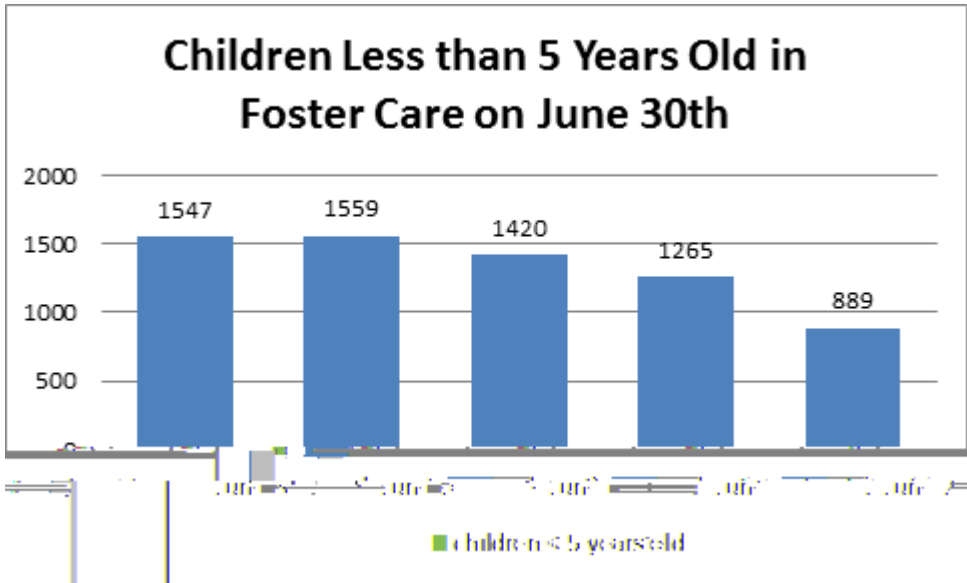
-

Referrals of Children under 3

BabyNet Referrals)

BabyNet)

Reducing Time in Care without a Permanent Family for Children under Age Five



**Foster Children Less Than 5 Years Old Who Have a Plan of Adoption
But Are Not Yet Placed in an Adoptive or Pre-Adoptive Home**

Accountability, Data, and Research (data from CAPSS on May 1, 2012)

Plan of Adoption is Primary Permanency Plan

Plan of Adoption is Secondary Permanency Plan				

**Foster Children Less Than 5 Years Old Who Have a Plan of Adoption
But Are Not Yet Placed in an Adoptive or Pre-Adoptive Home**
Accountability, Data, and Research (data from CAPSS on May 1, 2012)

Plan of Adoption is Primary Permanency Plan				

Plan of Adoption is Secondary Permanency Plan				

- -
 -
 -
- -
 -
- -
 -
- -
 -

○

○

•

•

•

•

XVI. CHILD MALTREATMENT DEATHS

•

•

•

of a child in Foster Care

736 Child Death in a CPS case

836 Death

XVII. CHILD ABUSE PREVENTION AND TREATMENT ACT (CAPTA) PLAN

- *Strengthening Families with Protective Factors,*

- *Preventing Child Abuse and Neglect through Parent-Provider Partnerships (PCAN),*

elearning.scchildren.org,

Parents, six

Keeping Families Safe From Fire: Fire Safety for

-
-
-

Legislative Changes that Impact CAPTA

Citizen Review Panel Reports and Response

XVIII. CHAFEE FOSTER CARE INDEPENDENCE PROGRAM (CFCIP)

-
-
-
-

-

Accomplishments and Progress in Seven Purpose Areas

-
-
-
-

Purpose 1: Help youth transition to self-sufficiency

-
-
-
-

-
-
-
-

-
-
-
-

-

-

-

-

Purpose 2. Help youth receive the education, training, and services necessary to obtain employment

-
-
-
-
-
-
-
-
-

-
-
-
-
-
-

Purpose 3. Help youth prepare for and enter post-secondary training and educational institutions

-
-
-
-
-
-
-
-

-
-
-
-
-

-
-
-
-
-
-
-

Purpose 4. Provide personal and emotional support to youth aging out of foster care through mentors and the promotion of interaction with dedicated adults

Purpose 5. Provide financial, housing, counseling, employment, education, and other appropriate support and services to former foster care recipients between 18 and 21 years of age to complement their own efforts to achieve self-sufficiency and to ensure that program participants recognize and accept their personal responsibility for preparing for and then making the transition into adulthood.

Purpose 6. Make available vouchers for education and training, including post-secondary education, to youth who have aged out of foster care.

Purpose 7. Provide to youth who, after attaining 16 years of age, have left foster care for kinship guardianship or adoption.

-
-
-
-

•
•

National Youth in Transition Database

NYTD Accomplishments

Training

Description:
Funding source
Who was the audience and # of attendees

Independent Living/ NYTD Training

Event:

Description of Curriculum

Presenters

NYTD Technical Assistance

Strategies for Improving Your State's NYTD Youth Outcome Survey Instrument and Methodology,

Medicaid Coverage for Former Foster Youth Age 18-20

Indian Tribe Consultation

XIX. STATISTICAL AND SUPPORTING INFORMATION

Education and Training Vouchers

Determining Eligibility for Benefits and Services

Chafee Funds:

-
-

ETV Funds

Annual Reporting of State Education and Training Vouchers Awarded

	Total ETVs Awarded	Number of New ETVs
_____ 2010-2011 School Year		
2011-2012 School Year*		

Inter-Country Adoptions

Child Welfare Workforce

Qualifications and Training

-

○

-
-
-

○

Position	College/ University	K-12 School	Technical School/ College	Total

Child Welfare Position Descriptions

Human Services II – Income range: \$25,627 to \$47,413

-

-

-
-

-

-

-

-

-

-

-

-

-

-

-

Human Service Coordinator I – Income range: \$31,182 to \$57,695 (supervisor, regional or state office level worker)

-

-

-

-

Human Service Coordinator II – Income range: \$37,945 to \$70,204 (supervisor)

-

-

-

-

-

Performance Appraisal System

Juvenile Justice Transfers

XX. FINANCIAL INFORMATION

-
-
-